



The Daily

Statistics Canada

Friday, February 8, 2002

Released at 8:30 a.m. Eastern time

MAJOR RELEASES

- **Labour Force Survey, January 2002** 2
 Spurred by a large gain in part-time jobs, employment rose by an estimated 76,000 in January, the first major increase in more than a year. The unemployment rate dipped 0.1 percentage points to 7.9%.
-

OTHER RELEASES

Aircraft movement statistics, December 2001 and 2001 annual	7
Industrial chemicals and synthetic resins, December 2001	7
Monthly railway carloadings, December 2001	7
Oils and fats, December 2001	7
Interim list of changes to municipal boundaries, status and name, January 2, 1996 to January 1, 2001	8

NEW PRODUCTS 9

REGIONAL REFERENCE CENTRES 11

RELEASE DATES: February 11 to 15 12



Statistics
Canada

Statistique
Canada

Canada

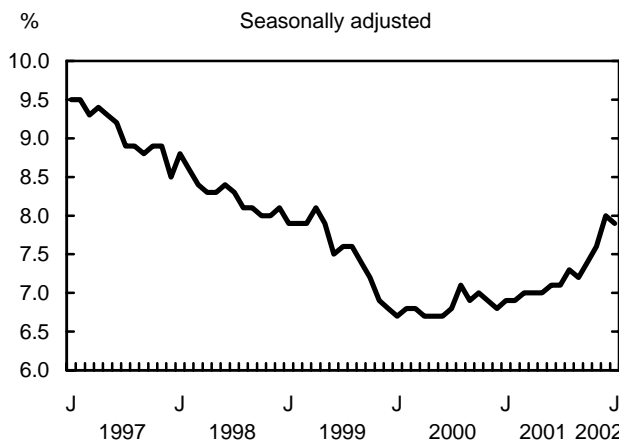
MAJOR RELEASES

Labour Force Survey

January 2002

Spurred by a large gain in part-time jobs, employment rose by an estimated 76,000 in January, the first major increase in more than a year. The unemployment rate dipped 0.1 percentage points to 7.9%.

Unemployment rate

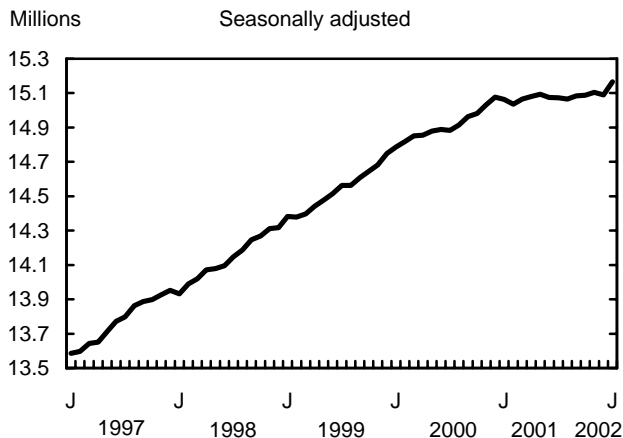


Despite the large increase in employment, year-over-year gains stood at only 0.7% (+103,000). During 2001, job gains did not keep pace with population growth — the percentage of the population with work was 61.2% in January, well below the 61.6% posted in January 2001. Similarly, the unemployment rate was a full percentage point higher than in January 2001.

Part-time gains account for most of the increase

Continuing the upward trend in recent months, part-time employment rose 46,000 (+1.7%) in January; gains were split equally between youths and adult men (those 25 and older). At 18.5%, the proportion of employed people who were working part-time was the highest since mid-1999. Full-time work also rose in January, but the increase (+30,000) was lower than the jump in part-time.

Employment



Adult women and youths find work

Employment among adult women rose 46,000 in January, all in full-time. This caused their unemployment rate to fall 0.3 percentage points to 6.1%.

With little change in employment, the unemployment rate for adult men stayed at 7.3%, 1.2 percentage points higher than that of women and the largest gap between the two rates since 1992. Since January 2001, employment has risen 1.6% for adult women, but only 0.2% for adult men.

After dropping during 2001, youth employment rose 36,000 in January, mostly due to added work in the restaurant sector. As a result of these gains, the youth unemployment rate fell 0.2 percentage points from December to 13.8%, which was still 1.7 percentage points higher than in January 2001.

Manufacturing up for the first time in months

For only the third time in 13 months, factory employment rose in January. Despite rising 25,000, manufacturing employment was down 70,000 (-3.0%) from January 2001. While computer and electronic product and transportation equipment manufacturing continued to decline in January, paper production and printing gained.

Employment in educational services also rose in January. The increase of 25,000 from December was the largest in two years, but education employment remains below its December 1999 peak.

Construction employment continued its upward momentum, rising 20,000 from December, consistent

with recent strength in housing starts. Since January 2001, construction employment has risen 42,000 (+5.1%).

Employment in accommodation and food was up 19,000 in January from December, due entirely to added employment in restaurants and drinking places. Since the summer of 2001, employment has been falling in hotels, motels and other accommodation facilities. However, restaurant employment has risen, resulting in year-over-year gains of 42,000 (+4.3%) in the combined accommodation and food sector.

Transportation and warehousing employment fell 13,000 from December, mainly due to employment losses in air transportation. Employment in transportation and warehousing was down 7.1% from January 2001, led by a sharp decline in trucking.

Farm employment continued to slide in January, dropping another 7,000. Over the last three years, agricultural employment has been on a steep downward trend, falling 39,000 (-11.2%) since January 2001 alone.

Gains in Quebec and British Columbia

Quebec's employment rebounded 27,000 in January, led by gains in manufacturing, after falling 10,000 in December. As a result, the unemployment rate dropped 0.6 percentage points to 9.1%. With January's gain, employment in Quebec is up 1.6% from January 2001, mostly due to strength in the Montréal labour market.

In British Columbia, employment was up 27,000, pushing the unemployment rate down 0.8 percentage points from December to 8.9%. While the large gain in employment offset some of the recent declines, employment in the province remained 31,000, or 1.6%, below its March 2001 peak. About one-third of January's gain was the result of added employment in construction.

Employment changed little in Ontario, but higher labour force participation left the unemployment rate at 7.4%, up 0.5 percentage points from December and the highest since March 1998. With fewer manufacturing

jobs, employment has been flat in Ontario for a little over a year. Compared with January 2001, employment in the province is up only 8,000 (+0.1%).

In Alberta, employment increased 11,000 from December, bringing year-over-year gains to 35,000 (+2.1%). Much of January's advance was in manufacturing, offsetting recent losses in this industry. The unemployment rate in Alberta fell 0.4 percentage points from December to 4.7%.

Employment in Saskatchewan rose 4,000 in January, but was still 12,000, (-2.6%), lower than in January 2001. Over the last year, falling farm employment has been the main reason for the decline. In January, the unemployment rate was 6.0%, down 0.2 percentage points from December.

Employment edged up (+3,000) in New Brunswick, nudging down the unemployment rate 0.1 percentage point to 11.3%. After falling in the first half of 2001, employment has since been on an upward trend — in January it was 9,000 higher than in July 2001.

There was little change in employment in the other provinces.

Available on CANSIM: tables 279-0001 to 279-0023.

Available at 7 am on Statistics Canada's Web site (www.statcan.ca). From the home page, choose *Today's news releases from The Daily*, then *Latest LFS*.

A more detailed summary, *Labour force information*, for the week ending January 19 (71-001-PIB, \$8/\$78; 71-001-PPB, \$11/\$103) is available today. See *How to order products*.

The next release of the Labour Force Survey will be on Friday, March 8.

To order data, or for general information, contact the Client Services Unit (1-866-873-8788; 613-951-4090; labour@statcan.ca). To enquire about the concepts, methods or data quality of this release, contact Vincent Ferrao (613-951-4750) or Geoff Bowlby (613-951-3325), Labour Statistics Division. □

Labour force characteristics for both sexes, aged 15 and over

	December 2001	January 2002	December 2001 to January 2002	December 2001	January 2002	December 2001 to January 2002
Seasonally adjusted						
Labour force			Participation rate			
	'000		% change	%		Change
Canada	16,409.0	16,471.1	0.4	66.3	66.4	0.1
Newfoundland and Labrador	258.1	257.0	-0.4	58.8	58.5	-0.3
Prince Edward Island	75.8	75.3	-0.7	68.2	67.7	-0.5
Nova Scotia	475.4	472.1	-0.7	63.1	62.6	-0.5
New Brunswick	380.2	383.7	0.9	62.7	63.2	0.5
Quebec	3,862.1	3,866.7	0.1	64.3	64.3	0.0
Ontario	6,415.3	6,452.9	0.6	67.3	67.6	0.3
Manitoba	593.0	596.5	0.6	68.7	69.1	0.4
Saskatchewan	497.1	500.3	0.6	65.4	65.8	0.4
Alberta	1,732.7	1,737.7	0.3	72.5	72.5	0.0
British Columbia	2,119.4	2,128.9	0.4	64.2	64.4	0.2
Employment			Employment rate			
	'000		% change	%		Change
Canada	15,090.2	15,166.1	0.5	60.9	61.2	0.3
Newfoundland and Labrador	214.2	212.3	-0.9	48.8	48.3	-0.5
Prince Edward Island	66.3	65.7	-0.9	59.6	59.1	-0.5
Nova Scotia	427.5	426.2	-0.3	56.8	56.6	-0.2
New Brunswick	337.0	340.2	0.9	55.6	56.1	0.5
Quebec	3,486.4	3,513.0	0.8	58.1	58.4	0.3
Ontario	5,970.1	5,977.0	0.1	62.6	62.6	0.0
Manitoba	565.5	566.1	0.1	65.5	65.6	0.1
Saskatchewan	466.2	470.4	0.9	61.3	61.9	0.6
Alberta	1,644.1	1,655.3	0.7	68.8	69.1	0.3
British Columbia	1,913.0	1,940.0	1.4	58.0	58.7	0.7
Unemployment			Unemployment rate			
	'000		% change	%		Change
Canada	1,318.8	1,304.9	-1.1	8.0	7.9	-0.1
Newfoundland and Labrador	43.9	44.7	1.8	17.0	17.4	0.4
Prince Edward Island	9.5	9.6	1.1	12.5	12.7	0.2
Nova Scotia	47.9	45.9	-4.2	10.1	9.7	-0.4
New Brunswick	43.3	43.5	0.5	11.4	11.3	-0.1
Quebec	375.7	353.7	-5.9	9.7	9.1	-0.6
Ontario	445.2	475.8	6.9	6.9	7.4	0.5
Manitoba	27.5	30.4	10.5	4.6	5.1	0.5
Saskatchewan	30.9	29.9	-3.2	6.2	6.0	-0.2
Alberta	88.7	82.4	-7.1	5.1	4.7	-0.4
British Columbia	206.4	188.9	-8.5	9.7	8.9	-0.8

Labour force characteristics for both sexes, aged 15 and over

	January 2001	January 2002	January 2001 to January 2002	January 2001	January 2002	January 2001 to January 2002
Unadjusted						
Labour force			Participation rate			
	'000		% change	%		Change
Canada	15,868.1	16,197.3	2.1	64.9	65.3	0.4
Newfoundland and Labrador	231.3	242.2	4.7	52.6	55.1	2.5
Prince Edward Island	70.3	72.6	3.3	63.9	65.3	1.4
Nova Scotia	449.5	460.1	2.4	59.9	61.1	1.2
New Brunswick	362.7	368.6	1.6	60.0	60.7	0.7
Quebec	3,705.0	3,796.7	2.5	62.1	63.2	1.1
Ontario	6,227.3	6,361.1	2.1	66.4	66.6	0.2
Manitoba	574.5	586.9	2.2	66.7	68.0	1.3
Saskatchewan	500.8	490.8	-2.0	65.6	64.5	-1.1
Alberta	1,682.1	1,716.8	2.1	71.8	71.6	-0.2
British Columbia	2,064.5	2,101.6	1.8	63.4	63.6	0.2
Employment			Employment rate			
	'000		% change	%		Change
Canada	14,680.1	14,796.7	0.8	60.0	59.7	-0.3
Newfoundland and Labrador	190.9	195.5	2.4	43.4	44.5	1.1
Prince Edward Island	59.1	59.7	1.0	53.7	53.7	0.0
Nova Scotia	400.8	410.0	2.3	53.4	54.4	1.0
New Brunswick	320.9	321.4	0.2	53.1	53.0	-0.1
Quebec	3,349.8	3,407.5	1.7	56.2	56.7	0.5
Ontario	5,851.5	5,863.3	0.2	62.4	61.4	-1.0
Manitoba	545.1	553.7	1.6	63.3	64.1	0.8
Saskatchewan	470.0	458.7	-2.4	61.6	60.3	-1.3
Alberta	1,591.2	1,627.3	2.3	67.9	67.9	0.0
British Columbia	1,900.6	1,899.6	-0.1	58.3	57.5	-0.8
Unemployment			Unemployment rate			
	'000		% change	%		Change
Canada	1,188.0	1,400.6	17.9	7.5	8.6	1.1
Newfoundland and Labrador	40.4	46.7	15.6	17.5	19.3	1.8
Prince Edward Island	11.1	12.9	16.2	15.8	17.8	2.0
Nova Scotia	48.7	50.2	3.1	10.8	10.9	0.1
New Brunswick	41.8	47.2	12.9	11.5	12.8	1.3
Quebec	355.2	389.2	9.6	9.6	10.3	0.7
Ontario	375.8	497.8	32.5	6.0	7.8	1.8
Manitoba	29.4	33.1	12.6	5.1	5.6	0.5
Saskatchewan	30.9	32.1	3.9	6.2	6.5	0.3
Alberta	91.0	89.5	-1.6	5.4	5.2	-0.2
British Columbia	163.9	201.9	23.2	7.9	9.6	1.7

Employment by industry (based on NAICS) and class of worker for both sexes, aged 15 and over

	December 2001	January 2002	December 2001 to January 2002	January 2001 to January 2002	December 2001 to January 2002	January 2001 to January 2002
Seasonally adjusted						
	'000		% change			
All industries	15,090.2	15,166.1	75.9	103.1	0.5	0.7
Goods-producing sector	3,791.4	3,833.4	42.0	-57.6	1.1	-1.5
Agriculture	312.7	306.1	-6.6	-38.6	-2.1	-11.2
Forestry, fishing, mining, oil and gas	290.9	287.8	-3.1	3.5	-1.1	1.2
Utilities	121.7	128.8	7.1	5.6	5.8	4.5
Construction	848.6	868.7	20.1	41.8	2.4	5.1
Manufacturing	2,217.4	2,242.0	24.6	-69.9	1.1	-3.0
Services-producing sector	11,298.8	11,332.7	33.9	160.7	0.3	1.4
Trade	2,432.5	2,415.5	-17.0	42.2	-0.7	1.8
Transportation and warehousing	745.7	732.7	-13.0	-55.6	-1.7	-7.1
Finance, insurance, real estate and leasing	872.8	875.7	2.9	7.1	0.3	0.8
Professional, scientific and technical services	969.7	973.4	3.7	-20.6	0.4	-2.1
Management, administrative and other support	569.0	571.3	2.3	39.5	0.4	7.4
Educational services	970.7	995.6	24.9	36.1	2.6	3.8
Health care and social assistance	1,564.8	1,572.8	8.0	28.6	0.5	1.9
Information, culture and recreation	696.8	707.3	10.5	4.6	1.5	0.7
Accommodation and food services	991.2	1,010.4	19.2	42.0	1.9	4.3
Other services	698.2	693.6	-4.6	10.5	-0.7	1.5
Public administration	787.5	784.5	-3.0	26.6	-0.4	3.5
Class of worker						
Public sector employees	2,833.8	2,862.7	28.9	17.8	1.0	0.6
Private sector	12,256.4	12,303.5	47.1	85.5	0.4	0.7
Private employees	9,974.8	10,020.7	45.9	118.0	0.5	1.2
Self-employed	2,281.6	2,282.8	1.2	-32.5	0.1	-1.4

Employment by type of work, age and sex

	January 2002	December 2001 to January 2002	January 2001 to January 2002	January 2002	December 2001 to January 2002	January 2001 to January 2002	January 2002	December 2001 to January 2002	January 2001 to January 2002
	Seasonally adjusted								
	Both sexes			Men			Women		
	'000								
Employment	15,166.1	75.9	103.1	8,115.0	25.8	3.9	7,051.1	50.1	99.2
Full-time	12,367.3	30.1	32.1	7,234.2	-10.9	-41.0	5,133.1	41.0	73.1
Part-time	2,798.9	45.9	71.1	880.8	36.7	44.9	1,918.0	9.1	26.2
15-24	2,335.9	35.6	-1.9	1,196.3	31.1	-7.6	1,139.7	4.6	5.8
25+	12,830.2	40.3	105.0	6,918.7	-5.4	11.4	5,911.5	45.6	93.5
25-54	11,142.2	15.0	-26.7	5,917.5	-19.2	-68.3	5,224.7	34.2	41.6
55+	1,688.0	25.3	131.7	1,001.2	13.9	79.8	686.8	11.4	51.9

OTHER RELEASES

Aircraft movement statistics

December 2001 and 2001 annual (preliminary)

In December, 317,321 take-offs and landings were recorded at the 43 Canadian airports with Nav Canada air traffic control towers, up 3.1% from December 2000.

Preliminary annual figures show 5,006,896 take-offs and landings in 2001 at the 43 airports with control towers, down 1.0% compared with 5,059,109 in 2000.

The December and annual 2001 preliminary monthly report is available on Transport Canada's Web site at this URL: (<http://www.tc.gc.ca/pol/en/report/TP1496/tp1496.htm>). For more information on this Web site, contact Michel Villeneuve (613-990-3825; villennm@tc.gc.ca) or Sheila Rajani (613-993-9822; rajanis@tc.gc.ca).

Statistics for the 55 Canadian airports with Nav Canada flight service stations are also available for December.

For more information, or to enquire about the concepts, methods or data quality of this release, contact Kathie Davidson (613-951-0141; fax: 613-951-0010; aviationstatistics@statcan.ca), Transportation Division. ■

Industrial chemicals and synthetic resins

December 2001

Chemical firms produced 276 986 metric tonnes of polyethylene synthetic resins in December, a 19.1% increase from 232 647 tonnes in December 2000 (revised numbers).

Year-to-date production to the end of December totalled 2 986 122 tonnes, up 8.5% from 2 751 339 tonnes (revised) in the same period of 2000.

Data are also available on production of 3 other types of synthetic resins and 24 industrial chemicals.

Available on CANSIM: table 303-0014.

The December 2001 issue of *Industrial chemicals and synthetic resins*, Vol. 44, no. 12 (46-002-XIB, \$5/47) is now available. See *How to order products*.

For general information or to order data, contact the dissemination officer (1-866-873-8789; 613-951-9497; manufact@statcan.ca). To enquire about the concepts, methods or data quality of this release, contact Josée

Perreault (613-951-9836; josee.perreault@statcan.ca), Manufacturing, Construction and Energy Division. ■

Monthly railway carloadings

December 2001

The freight loaded by railways in December totalled 21.1 million metric tonnes (excluding intermodal traffic), down 1.9% from December 2000. Intermodal tonnage, made up of containers on flatcars and trailers on flatcars, was 1.7 million tonnes, down 1.9% from December 2000.

Available on CANSIM: table 404-0002.

The December 2001 issue of *Monthly railway carloadings*, Vol. 78, no. 12 (52-001-XIE, \$8/\$77) is now available. See *How to order products*.

For more information, or to enquire about the concepts, methods or data quality of this release, contact Jean-Robert Larocque (613-951-2486; fax: 613-951-0009; laroque@statcan.ca), Transportation Division. ■

Oils and fats

December 2001

Production of all types of deodorized oils totalled 73 019 metric tonnes in December, down 19.7% from 90 919 tonnes in November.

Domestic sales of deodorized margarine oil totalled 9 888 tonnes; of deodorized shortening oil, 24 254 tonnes; and of deodorized salad oil, 31 721 tonnes in December.

Note: This is the last issue of the publication. The survey has been discontinued as of January.

Available on CANSIM: table 303-0012.

The December 2001 issue of *Oils and fats*, Vol. 52, no. 12 (32-006-XIB, \$5/\$47) is now available. See *How to order products*.

For general information or to order data, contact the dissemination officer (1-866-873-8789; 613-951-9497; manufact@statcan.ca). To enquire about the concepts, methods or data quality of this release, contact

Peter Zylstra (613-951-3511; zylspet@statcan.ca),
Manufacturing, Construction and Energy Division. ■

**Interim list of changes to municipal
boundaries, status and name**

January 2, 1996 to January 1, 2001

The report, *Interim list of changes to municipal boundaries, status and name* summarizes the changes to municipal boundaries, status and names that

occurred from January 2, 1996 to January 1, 2001. These changes have been processed by the Geography Division, and are based on information received from the provinces and territories.

Interim list of changes to municipal boundaries, status and name (92F0009XPB, \$25), released annually, is now available. See *How to order products*.

For more information or to order this product, contact your nearest Statistics Canada Regional Reference Centre. ■

NEW PRODUCTS

Infomat — A weekly review, February 8, 2002
Catalogue number 11-002-XIE (\$3/\$109).

Infomat — A weekly review, February 8, 2002
Catalogue number 11-002-XPE (\$4/\$145).

Oils and fats, Vol. 52, no. 12, December 2001
Catalogue number 32-006-XIB (\$5/\$47).

Industrial chemicals and synthetic resins, Vol. 44,
no. 12, December 2001
Catalogue number 46-002-XIB (\$5/\$47).

Monthly railway carloadings, Vol. 78, no. 12,
December 2001
Catalogue number 52-001-XIE (\$8/\$77).

Construction price statistics, Vol. 17, no. 3, third
quarter 2001
Catalogue number 62-007-XPB (\$24/\$79).

Building permits, Vol. 45, no. 12, December 2001
Catalogue number 64-001-XIE (\$14/\$145).

**Interim list of changes to municipal boundaries,
status, and names**, January 1996 to January 2001
Catalogue number 92F0009XPB (\$25).

**All prices are in Canadian dollars and exclude sales
tax. Additional shipping charges apply for delivery
outside Canada.**

Catalogue numbers with an -XIB or an -XIE extension
are Internet versions; those with -XMB or -XME are
microfiche; -XPB or -XPE are paper versions; -XDB are
electronic versions on diskette and -XCB are electronic
versions on compact disc.

How to order products

Order products by phone:

Please refer to the • Title • Catalogue number • Volume number • Issue number • Your VISA or MasterCard number.

In Canada and the United States call:

1-800-267-6677

From other countries call:

1-613-951-7277

To fax your order:

1-877-287-4369

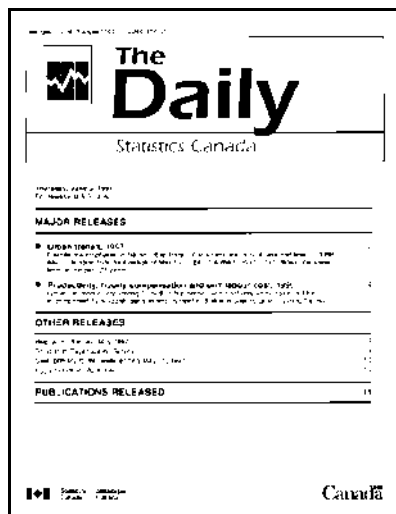
Address changes or account inquiries:

1-800-700-1033

To order a product by mail write: Statistics Canada, Circulation Management, Dissemination Division, Ottawa, K1A 0T6.
Include a cheque or money order payable to **Receiver General of Canada/Publications**. Canadian customers
add 7% GST and applicable PST.

To order by Internet: write to order@statcan.ca or download an electronic version by accessing Statistics Canada's
Web site (www.statcan.ca) under the headings *Products and services* and *Fee publications* (\$).

Authorized agents and bookstores also carry Statistics Canada's catalogued publications.



Statistics Canada's official release bulletin

Catalogue 11-001E.

Published each working day by the Communications Division, Statistics Canada, 10-H, R.H. Coats Bldg., Tunney's Pasture, Ottawa, Ontario K1A 0T6.

To access *The Daily* on the Internet, visit our site at <http://www.statcan.ca>. To receive *The Daily* each morning by E-mail, send an E-mail message to listproc@statcan.ca. Leave the subject line blank. In the body of the message, type "subscribe daily firstname lastname".

Editor: Tom Vradenburg (613-951-1103, tom.vradenburg@statcan.ca)

Head of Official Release: Madeleine Simard (613-951-1088), madeleine.simard@statcan.ca

Published by authority of the Minister responsible for Statistics Canada. © Minister of Industry, 2002. Citation in newsprint, magazine, radio, and television reporting is permitted subject to the requirement that Statistics Canada is acknowledged as the source. Any other reproduction is permitted subject to the requirement that Statistics Canada is acknowledged as the source on all copies as follows: Statistics Canada, *The Daily*, catalogue 11-001E, along with date and page references.

REGIONAL REFERENCE CENTRES

Statistics Canada's Regional Reference Centres offer a full range of the Agency's products and services. Each reference centre is equipped with a library and sales counter where you can consult or purchase publications, diskettes, CD-ROM discs, microfiche, maps and more.

Each centre has facilities to retrieve information from CANSIM, Statistics Canada's data retrieval system. A telephone inquiry service is available with toll-free access for those located outside local calling areas. Many other valuable services—from seminars to consultations—are also offered. For information, contact your nearest Regional Reference Centre.

Newfoundland and Labrador, Nova Scotia, Prince Edward Island and New Brunswick

Advisory Services
Statistics Canada
1741 Brunswick Street
2nd Floor, Box 11
Halifax, Nova Scotia
B3J 3X8
Local calls: (902) 426-5331
Toll free: 1-800-263-1136
Fax: 1-902-426-9538
E-mail: atlantic.info@statcan.ca

Quebec and Nunavut

Advisory Services
Statistics Canada
4th Floor, East Tower
Guy Favreau Complex
200 René Lévesque Blvd. W.
Montréal, Québec
H2Z 1X4
Local calls: (514) 283-5725
Toll free: 1-800-263-1136
Fax: 1-514-283-9350
E-mail: infostcmontreal@statcan.ca

National Capital Region

Statistical Reference Centre (NCR)
Statistics Canada
Lobby, R.H. Coats Building
Holland Avenue
Tunney's Pasture
Ottawa, Ontario
K1A 0T6
Local calls: (613) 951-8116
Fax: 1-613-951-0581
E-mail: infostats@statcan.ca

Ontario

Advisory Services
Statistics Canada
10th Floor
Arthur Meighen Building
25 St. Clair Avenue East
Toronto, Ontario
M4T 1M4
Local calls: (416) 973-6586
Toll free: 1-800-263-1136
Fax: 1-416-973-7475

Manitoba

Advisory Services
Statistics Canada
Via Rail Building, Suite 200
123 Main Street
Winnipeg, Manitoba
R3C 4V9
Local calls: (204) 983-4020
Toll free: 1-800-263-1136
Fax: 1-204-983-7543
E-mail: statswpg@solutions.net

Saskatchewan

Advisory Services
Statistics Canada
Park Plaza, Suite 440
2365 Albert Street
Regina, Saskatchewan
S4P 4K1
Local calls: (306) 780-5405
Toll free: 1-800-263-1136
Fax: 1-306-780-5403
E-mail: statcan@sk.sympatico.ca

Alberta and the Northwest Territories

Advisory Services
Statistics Canada
Pacific Plaza, Suite 900
10909 Jasper Avenue, N.W.
Edmonton, Alberta
T5J 4J3
Local calls: (780) 495-3027
Toll free: 1-800-263-1136
Fax: 1-780-495-5318
E-mail: Sabrina.Pond@statcan.ca

British Columbia and the Yukon

Advisory Services
Statistics Canada
Library Square Tower, Suite 600
300 West Georgia Street
Vancouver, B.C.
V6B 6C7
Local calls: (604) 666-3691
Toll free: 1-800-263-1136
Fax: 1-604-666-4863

National toll-free enquiries line (Canada and the United States): 1-800-263-1136
Toll-free order-only line (Canada and the United States): 1-800-267-6677
Toll-free fax order line (Canada and the United States): 1-877-287-4369
Toll-free telecommunications device for the hearing impaired: 1-800-363-7629

The Daily, February 8, 2002

RELEASE DATES: FEBRUARY 11 TO 15

(Release dates are subject to change.)

Release date	Title	Reference period
12	New Housing Price Index	December 2001
14	New motor vehicle sales	December 2001
14	Consumer Price Index	January 2002