

# The Daily

Statistics Canada

**Tuesday, August 26, 2008**

Released at 8:30 a.m. Eastern time

---

## Releases

---

Employment Insurance, June 2008	2
Public sector employment, second quarter 2008	4
Natural gas sales, June 2008	5
Crushing statistics, July 2008	5
Cereals and oilseeds review, June 2008	6
Deliveries of major grains, July 2008	6

---

## New products

---

7



---

## **Employment Insurance**

June 2008 (preliminary)

In June, 460,040 Canadians received regular Employment Insurance benefits, up 0.5% from May. Regular benefit payments totalled \$732.5 million in June.

Compared with June 2007, the number of Canadians receiving regular benefits declined 3.0%, with the same decrease posted for both men and women.

The number of regular beneficiaries fell in most census metropolitan areas (CMAs) compared with June 2007. The largest declines were in Windsor (-41.0%) and Saskatoon (-30.4%). Among those CMAs where the number of regular beneficiaries went up, Oshawa (+32.0%) and Kitchener (+13.4%) had the largest year-over-year increases.

**Note:** Employment Insurance Statistics Program data are produced from an administrative data source and may, from time to time, be affected by changes

to the *Employment Insurance Act* or administrative procedures. The number of beneficiaries is a measure of all persons who received Employment Insurance benefits from the 15th to the 21st of June. This coincides with the reference week of the Labour Force Survey for the month of June. The regular benefit payments figure measures the total of all monies paid to individuals during the month.

**Available on CANSIM: tables 276-0001 to 276-0006, 276-0009, 276-0011, 276-0015 and 276-0016.**

**Definitions, data sources and methods: survey number 2604.**

Data on Employment Insurance for July will be released on September 23.

For more information, or to order data, contact Client Services (toll-free 1-866-873-8788; 613-951-4090; [labour@statcan.gc.ca](mailto:labour@statcan.gc.ca)). To enquire about the concepts, methods or data quality of this release, contact Gilles Groleau (613-951-4091), Labour Statistics Division. □

## Employment Insurance statistics

	June 2008	May 2008	June 2007	May to June 2008	June to June 2008
Seasonally adjusted					
				% change	
Regular beneficiaries	460,040 <sup>P</sup>	457,760 <sup>r</sup>	475,280	0.5	-3.2
Regular benefits paid (\$ millions)	732.5 <sup>P</sup>	710.3 <sup>r</sup>	706.3	3.1	3.7
Initial and renewal claims received (thousands)	242.6 <sup>P</sup>	216.1 <sup>r</sup>	216.4	12.3	12.1
Unadjusted					
All beneficiaries (thousands) <sup>1</sup>	603.2 <sup>P</sup>	651.0 <sup>P</sup>	608.6		
Regular beneficiaries (thousands)	359.1 <sup>P</sup>	407.0 <sup>P</sup>	370.2		-3.0
Men (thousands)	211.7 <sup>P</sup>	254.2 <sup>P</sup>	218.3		-3.0
Women (thousands)	147.4 <sup>P</sup>	152.8 <sup>P</sup>	151.9		-3.0
Initial and renewal claims received (thousands)	215.1	151.4	174.2		
Payments (\$ millions)	1,140.9	1,068.4	962.3		
Year-to-date (January to June)					
			2008	2007	2007 to 2008
					% change
Claims received (thousands)			1,218.2	1,222.5	-0.4
Payments (\$ millions)			7,952.4	7,860.7	1.2

<sup>r</sup> revised

<sup>P</sup> preliminary

1. "All beneficiaries" includes all claimants receiving regular benefits (for example, as a result of layoff) or special benefits (for example, as a result of illness) and are representative of data for the Labour Force Survey reference week which is usually the week containing the 15th of the month.

## Number of beneficiaries receiving regular benefits

	June 2008 <sup>P</sup>	May to June 2008	June to June 2008
Seasonally adjusted			
		% change	
<b>Canada</b>	<b>460,040</b>	<b>0.5</b>	<b>-3.2</b>
Newfoundland and Labrador	34,490	-1.6	-4.7
Prince Edward Island	7,780	-1.5	-3.0
Nova Scotia	26,830	-1.0	-3.5
New Brunswick	28,960	-2.4	-4.3
Quebec	155,810	0.5	-6.1
Ontario	131,100	-1.6	-1.3
Manitoba	9,800	6.5	-0.5
Saskatchewan	7,860	11.3	-17.5
Alberta	15,910	7.9	-6.3
British Columbia	39,670	6.7	6.4
Yukon	720	1.4	-1.4
Northwest Territories	710	10.9	12.7
Nunavut	270	0.0	-18.2

<sup>P</sup> preliminary

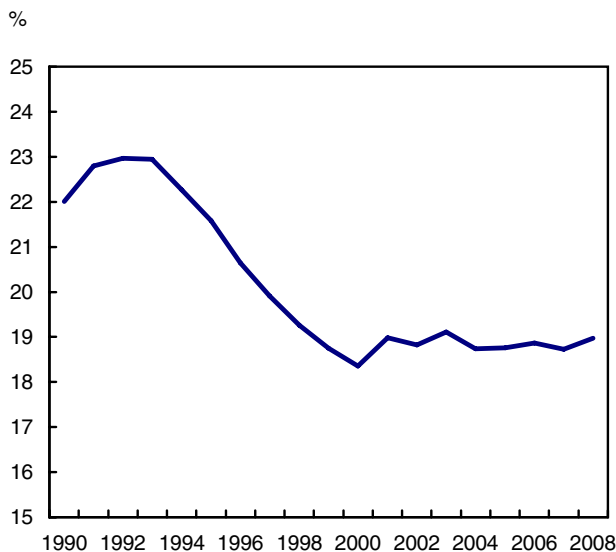
**Note:** The number of beneficiaries includes all claimants who received regular benefits for the Labour Force Survey reference week, usually containing the 15th day of the month.

## Public sector employment

Second quarter 2008 (preliminary)

Public sector employment reached 3.4 million in the second quarter of 2008, up 3.1% from the same period in 2007. Public sector employment has been increasing at a steady pace since 2000 after years of decline throughout the 1990s. However, the proportion of public sector workers among the total employed in the labour force has remained relatively stable at about 19% since 2001.

### Proportion of public sector employment among total employed in labour force, second quarter



In the second quarter of 2008, employment growth in the public sector was concentrated in Alberta, British Columbia and Ontario. For the last three years, Alberta's growth rate has outpaced that of all other provinces.

All major components of the public sector posted gains in the second quarter of 2008 compared with the same quarter last year.

Following years of decline in most of the 1990s for all three levels of general government, average employment has been growing since 2000. The growth rate in each of the federal and local general government has been twice that of the provincial and territorial governments.

The year-over-year employment growth in educational institutions (universities, colleges and school boards) has remained stable at about 2% over

the past four years. During this time, Ontario accounted for over half of this growth.

Employment in health and social services institutions rose 2.4% in the second quarter of 2008 compared with the same quarter of 2007. This sector has been increasing at a steady pace in the past three years. Alberta was the main contributor, posting a 9.5% increase compared with the previous year.

Total public sector wages and salaries grew 4.9% compared with the same quarter last year.

**Note:** The public sector includes all economic entities controlled by government, and is comprised of four major components: federal government (general government, which includes ministries, departments, agencies and non-autonomous funds, autonomous funds and organizations, as well as federal non-autonomous pension plans); provincial and territorial government (general government, which includes ministries, departments, agencies and non-autonomous funds, autonomous funds and organizations, as well as universities and colleges, health and social services institutions, and provincial non-autonomous pension plans); local government (general government, which includes municipalities and non-autonomous funds, autonomous funds and organizations, as well as school boards); and government business enterprises (at the federal, provincial/territorial and local levels).

**Available on CANSIM: tables 183-0002 and 183-0004.**

**Definitions, data sources and methods: survey number 1713.**

For a more detailed description of how public sector employment is defined and reconciled with other information sources, refer to the document entitled *Reconciliation of Public Sector Employment Estimates from Multiple Information Sources* by clicking on the survey number 1713.

**Available on CANSIM: tables 183-0021 and 183-0022.**

Data tables on public sector employment are also available in the *National economic accounts* module of our website.

For more information, or to order data, contact Client Services (613-951-0767; [pid-info-dip@statcan.gc.ca](mailto:pid-info-dip@statcan.gc.ca)). To enquire about the concepts, methods or data quality of this release, contact Alain Baril (613-951-4131; [alain.baril@statcan.gc.ca](mailto:alain.baril@statcan.gc.ca)), Public Institutions Division. □

## Public sector employment

	First quarter 2007	Second quarter 2007	First quarter 2008	Second quarter 2008
	thousands			
<b>Public sector</b>	<b>3,221</b>	<b>3,284</b>	<b>3,307</b>	<b>3,387</b>
Government	2,939	2,994	3,014	3,081
General government	1,105	1,149	1,137	1,188
Federal	382	390	394	403
Provincial and territorial	344	362	353	371
Local	378	397	391	414
Educational institutions	1,050	1,046	1,074	1,075
Universities and colleges <sup>1</sup>	357	343	371	353
School boards	693	704	703	722
Health and social services institutions	783	799	803	818
Government business enterprises	282	290	293	306

1. Includes vocational and trade institutions.

**Note:** Numbers may not add up due to rounding.

## Natural gas sales

June 2008 (preliminary)

Natural gas sales totalled 3 932 million cubic metres in June, up 3.2% from June 2007.

Sales to the residential (+2.5%), commercial (+2.3%) and industrial including direct (+3.4%) sectors were all up in June.

Colder-than-normal temperatures in the provinces west of Quebec led to the increase in sales.

**Definitions, data sources and methods: survey number 2149.**

For more information, to order data, or to enquire about the concepts, methods or data quality of this release, contact the dissemination officer (toll-free 1-866-873-8789; 613-951-9497; [energ@statcan.gc.ca](mailto:energ@statcan.gc.ca)), Manufacturing and Energy Division.

## Natural gas sales

	June 2008 <sup>P</sup>	June 2007	June 2007 to June 2008
	thousands of cubic metres		% change
<b>Total sales</b>	<b>3 932 295</b>	<b>3 812 196</b>	<b>3.2</b>
Residential <sup>1</sup>	566 301	552 244	2.5
Commercial <sup>2</sup>	398 885	390 008	2.3
Industrial <sup>3</sup> and direct sales <sup>4</sup>	2 967 109	2 869 944	3.4

<sup>P</sup> preliminary

1. Gas sold for domestic purposes, including space heating, water heating and cooking, to a residential dwelling unit.

2. Gas sold to customers engaged in wholesale or retail trade, governments, institutions, office buildings, etc.

3. Gas sold to customers engaged in a process that creates or changes raw or unfinished materials into another form or product. Includes mining and manufacturing establishments. Includes firm, interruptible and buy/sell agreements.

4. Represents direct, non-utility, sales for consumption, where the utility acts solely as the transporter.

## Crushing statistics

July 2008

Oilseed processors crushed 338 459 metric tonnes of canola in July. Oil production totalled 144 321 metric tonnes in July and meal production amounted to 203 467 metric tonnes. During the 2007/2008 crop year, 4 144 449 metric tonnes of canola were crushed.

**Available on CANSIM: table 001-0005.**

**Definitions, data sources and methods: survey number 3404.**

The July 2008 issue of *Cereals and Oilseeds Review* (22-007-XIB, free) will be available in September.

For more information, or to enquire about the concepts, methods or data quality of this release, contact Client Services (toll-free 1-800-465-1991; [agriculture@statcan.gc.ca](mailto:agriculture@statcan.gc.ca)), Agriculture Division. ■

## Cereals and oilseeds review

June 2008

Data from the June issue of *Cereals and Oilseeds Review* are now available.

The June 2008 issue of *Cereals and Oilseeds Review*, Vol. 31, no. 6 (22-007-XIB, free), is now available from the *Publications* module of our website. The June issue contains an overview of July's market conditions.

For more information, or to enquire about the concepts, methods or data quality of this release, contact Client Services (toll-free 1-800-465-1991; [agriculture@statcan.gc.ca](mailto:agriculture@statcan.gc.ca)), Agriculture Division.

**Definitions, data sources and methods: survey numbers, including related surveys, 3401, 3403, 3404, 3443, 3464, 3476 and 5046.** ■

## Deliveries of major grains

July 2008

Data on major grain deliveries are now available for July.

**Available on CANSIM: table 001-0001.**

**Definitions, data sources and methods: survey numbers, including related surveys, 3403, 3404, 3443 and 5046.**

The July 2008 issue of *Cereals and Oilseeds Review* (22-007-XIB, free) will be available in September.

For more information, or to enquire about the concepts, methods or data quality of this release, contact Client Services (toll-free 1-800-465-1991; [agriculture@statcan.gc.ca](mailto:agriculture@statcan.gc.ca)), Agriculture Division. ■

## New products

**Cereals and Oilseeds Review**, June 2008, Vol. 31, no. 6  
**Catalogue number 22-007-XIB**  
 (free).

**2006 Census Results Teacher's Kit**, census year 2006  
**Catalogue number 92-445-XWE**  
 (free).

**All prices are in Canadian dollars and exclude sales tax. Additional shipping charges apply for delivery outside Canada.**

Catalogue numbers with an -XWE, -XIB or an -XIE extension are Internet versions; those with -XMB or -XME are microfiche; -XPB or -XPE are paper versions; -XDB or -XDE are electronic versions on diskette; -XCB or -XCE are electronic versions on compact disc; -XVB or -XVE are electronic versions on DVD and -XBB or -XBE a database.

### How to order products

**To order by phone, please refer to:**

- The title
  - The catalogue number
  - The volume number
  - The issue number
  - Your credit card number.
- From Canada and the United States, call: **1-800-267-6677**  
 From other countries, call: **1-613-951-2800**  
 To fax your order, call: **1-877-287-4369**  
 For address changes or account inquiries, call: **1-877-591-6963**

**To order by mail, write to:** Statistics Canada, Finance, 6<sup>th</sup> floor, R.H. Coats Bldg., Ottawa, K1A 0T6.  
 Include a cheque or money order payable to **Receiver General of Canada/Publications**. Canadian customers add 5% GST and applicable PST.

**To order by Internet, write to:** [infostats@statcan.ca](mailto:infostats@statcan.ca) or download an electronic version by accessing Statistics Canada's website ([www.statcan.ca](http://www.statcan.ca)). From the *Our products and services* page, under *Browse our Internet publications*, choose *For sale*.

**Authorized agents and bookstores also carry Statistics Canada's catalogued publications.**



### Statistics Canada's official release bulletin

Catalogue 11-001-XIE.

Published each working day by the Communications and library Services Division, Statistics Canada, 10G, R.H. Coats Building, 100 Tunney's Pasture Driveway, Ottawa, Ontario K1A 0T6.

To access *The Daily* on the Internet, visit our site at <http://www.statcan.ca>. To receive *The Daily* each morning by e-mail, send an e-mail message to [listproc@statcan.ca](mailto:listproc@statcan.ca). Leave the subject line blank. In the body of the message, type "subscribe daily firstname lastname".

Published by authority of the Minister responsible for Statistics Canada. © Minister of Industry, 2008. All rights reserved. The content of this electronic publication may be reproduced, in whole or in part, and by any means, without further permission from Statistics Canada, subject to the following conditions: that it be done solely for the purposes of private study, research, criticism, review or newspaper summary, and/or for non-commercial purposes; and that Statistics Canada be fully acknowledged as follows: Source (or "Adapted from", if appropriate): Statistics Canada, year of publication, name of product, catalogue number, volume and issue numbers, reference period and page(s). Otherwise, no part of this publication may be reproduced, stored in a retrieval system or transmitted in any form, by any means—electronic, mechanical or photocopy— or for any purposes without prior written permission of Licensing Services, Client Services Division, Statistics Canada, Ottawa, Ontario, Canada K1A 0T6.