

The Daily

Statistics Canada

Wednesday, April 7, 2010

Released at 8:30 a.m. Eastern time

Releases

Building permits, February 2010	2
The value of building permits edged down 0.5% to \$5.7 billion in February and was 56.7% higher than in February 2009, when it was at its lowest level during the economic slowdown.	
Canadian Foreign Post Indexes, April 2010	7
Cement, February 2010	7
Federal Jurisdiction Workplace Survey, 2008	7

New products and studies	8
---------------------------------	---



Releases

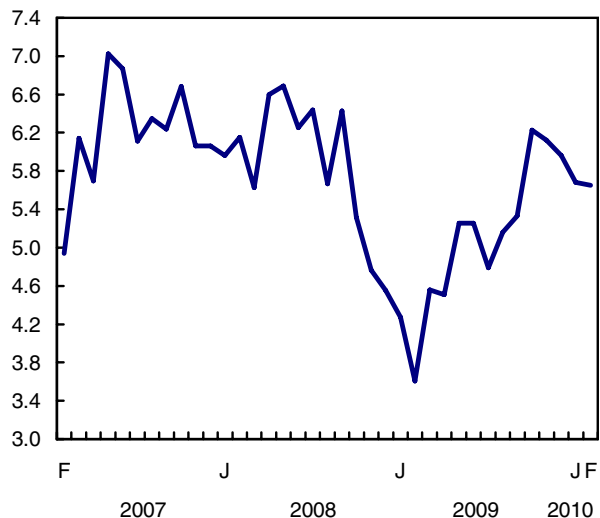
Building permits

February 2010

The value of building permits edged down 0.5% to \$5.7 billion in February and was 56.7% higher than in February 2009, when it was at its lowest level during the economic slowdown.

Total value of permits

\$ billions



In February, increases in permits for commercial buildings and single-family dwellings failed to offset a significant decline in multiple-dwelling construction intentions.

Residential construction intentions fell 7.5% to \$3.7 billion. A 52.5% drop in the value of multiple dwellings in Ontario was largely responsible for the decrease at the national level.

In the non-residential sector, municipalities issued permits worth \$2.0 billion, a 16.0% advance following three consecutive months of declines. Permits for commercial buildings posted the largest gain in February.

At the provincial level, the value of building permits was up in six provinces, with Quebec and Alberta leading

Note to readers

Unless otherwise stated, this release presents seasonally adjusted data, which eases comparisons by removing the effects of seasonal variations.

The Building Permits Survey covers 2,400 municipalities representing 95% of the population. It provides an early indication of building activity.

The communities representing the other 5% of the population are very small, and their levels of building activity have little impact on the total.

The value of planned construction activities shown in this release excludes engineering projects (e.g., waterworks, sewers or culverts) and land.

For the purpose of this release, the census metropolitan area of Ottawa–Gatineau (Ontario/Quebec) is divided into two areas: Gatineau part and Ottawa part.

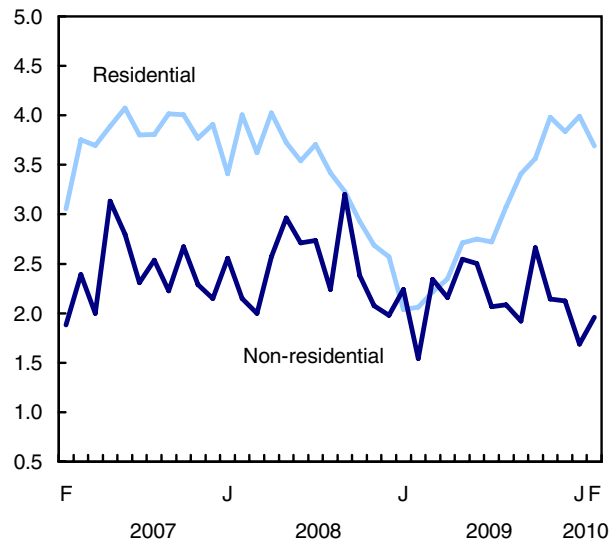
Revision

Preliminary data are provided for the current reference month. Revised data, based on late responses, are updated for the previous month.

the way. Ontario, Nova Scotia, British Columbia and Manitoba posted declines in February.

Residential and non-residential sectors

\$ billions



Residential sector: Decline in multiple-dwelling intentions

The value of building permits for multi-family units declined 28.3% to \$962 million in February. Ontario, Quebec and Nova Scotia posted the largest declines, while Alberta and New Brunswick were the only provinces to record advances in February.

The value of building permits for single-family dwellings rose 3.0% to \$2.7 billion, its second straight monthly gain. The value of single-family permits has been on an upward trend over the past year and reached its highest point ever in February. Every province except British Columbia, Nova Scotia and Manitoba contributed to the increase in single-family construction intentions.

Municipalities approved the construction of 16,107 new dwellings in February, down 14.2%. The decrease was largely attributable to multi-family dwellings, which fell 27.1% to 6,962 units. While the value of single-family permits was up, the number of units approved declined 1.0% to 9,145.

Non-residential sector: Significant increase in the commercial component

The value of commercial building permits totalled \$1.3 billion, up 27.0% from January. The increase was mainly due to construction intentions for hotels and office buildings in Ontario and Quebec. Alberta recorded an increase in permits for recreational buildings and retail stores.

In the industrial component, the value of building permits advanced 2.1% to \$264 million. The increase was mainly a result of higher construction intentions in Alberta, Nova Scotia and British Columbia.

The value of institutional building permits edged down 0.4% to \$440 million, after falling 14.9% in January. In February, Ontario and Alberta saw a decline in building projects for educational institutions, which were not offset by the increase in Quebec.

Ontario and Quebec at opposite extremes

The value of building permits was up in six provinces.

Quebec posted the largest gain, led by the non-residential sector. Alberta followed with increases in every residential-sector component and an advance in the non-residential sector.

In February, four provinces posted declines as a result of a drop in the value of residential-sector permits, despite growth in the non-residential sector. Ontario posted the steepest decline in February, primarily because of lower permits for multi-family units.

Metropolitan areas: Permit values down in more than half of the census metropolitan areas

The total value of permits was down in 19 of the 34 census metropolitan areas.

The largest declines were in Toronto and Montréal and were due to decreases in the residential sector. Kitchener followed with a decline due to the non-residential sector and multi-family units.

In contrast, the biggest gains were in Edmonton and Windsor, and were attributable to increases in both residential and non-residential sectors.

Available on CANSIM: tables 026-0001 to 026-0008 and 026-0010.

Definitions, data sources and methods: survey number 2802.

The February 2010 issue of *Building Permits* (64-001-X, free) will be available soon.

The March building permit data will be released on May 6.

To order data, contact Jasmine Gaudreault (toll-free 1-800-579-8533; 613-951-6321; bdp_information@statcan.gc.ca). For more information, or to enquire about the concepts, methods or data quality of this release, contact Nicole Charron (613-951-0087), Investment and Capital Stock Division.

□

Dwelling units, value of residential and non-residential building permits

	February 2009	December 2009	January 2010 ^r	February 2010 ^p	January to February 2010	February 2009 to February 2010
Seasonally adjusted						
	number of units				% change	
Total dwellings	10,468	18,368	18,782	16,107	-14.2	53.9
Single ¹	5,349	8,686	9,238	9,145	-1.0	71.0
Multiple	5,119	9,682	9,544	6,962	-27.1	36.0
	value in \$ millions				% change	
Total	3,607.0	5,960.7	5,679.6	5,650.6	-0.5	56.7
Residential	2,062.1	3,837.7	3,991.0	3,691.2	-7.5	79.0
Single ¹	1,321.0	2,479.7	2,650.2	2,729.3	3.0	106.6
Multiple	741.1	1,358.0	1,340.9	961.9	-28.3	29.8
Non-residential	1,544.9	2,123.0	1,688.5	1,959.4	16.0	26.8
Industrial	208.6	233.9	258.3	263.7	2.1	26.4
Commercial	965.6	1,370.3	988.8	1,256.0	27.0	30.1
Institutional	370.7	518.8	441.3	439.7	-0.4	18.6

^r revised

^p preliminary

1. Included in this category are the following types of dwellings: single-detached, mobile home and cottage.

Note: Data may not add up to totals as a result of rounding.

Value of building permits, by census metropolitan area¹

	February 2009	December 2009	January 2010 ^r	February 2010 ^p	January to February 2010	February 2009 to February 2010
Seasonally adjusted						
	\$ millions				% change	
Total	2,594.9	4,463.5	4,208.3	3,951.1	-6.1	52.3
St. John's	40.7	43.6	65.2	64.5	-1.1	58.7
Halifax	48.3	34.5	76.1	41.0	-46.1	-15.1
Moncton	68.9	51.4	8.1	16.3	100.7	-76.3
Saint John	21.4	23.9	9.5	12.7	34.6	-40.6
Saguenay	7.2	7.5	7.5	9.2	23.0	28.7
Québec	86.3	115.6	150.0	152.5	1.7	76.8
Sherbrooke	17.0	20.2	34.0	43.0	26.6	153.2
Trois-Rivières	13.7	13.7	18.5	64.2	247.1	367.0
Montréal	338.2	552.1	629.1	540.5	-14.1	59.8
Ottawa-Gatineau, Ontario/Quebec	146.1	208.4	187.9	166.2	-11.6	13.7
Gatineau part	35.1	57.5	60.8	51.3	-15.7	46.3
Ottawa part	111.0	150.9	127.0	114.8	-9.6	3.4
Kingston	17.8	19.0	10.3	13.1	27.5	-26.3
Peterborough	5.0	13.3	6.6	9.3	41.0	86.5
Oshawa	18.8	62.4	78.1	84.7	8.5	350.7
Toronto	557.3	999.6	1,189.0	929.9	-21.8	66.9
Hamilton	39.9	86.0	87.0	106.9	22.8	167.8
St. Catharines-Niagara	38.4	34.8	32.9	30.7	-6.5	-20.0
Kitchener	65.2	171.9	246.9	177.5	-28.1	172.1
Brantford	15.8	9.4	12.4	9.3	-25.2	-41.2
Guelph	20.1	27.1	22.2	36.7	65.4	82.3
London	28.9	43.2	84.2	73.3	-13.0	153.5
Windsor	10.3	9.4	14.2	77.1	444.5	650.4
Barrie	4.2	11.0	16.0	9.5	-40.3	127.0
Greater Sudbury	18.6	145.6	7.0	4.7	-32.1	-74.5
Thunder Bay	4.9	3.3	1.3	3.6	176.6	-27.3
Winnipeg	50.5	67.9	67.8	74.6	10.1	47.7
Regina	37.0	63.8	36.0	34.3	-4.9	-7.4
Saskatoon	26.6	58.6	40.6	38.2	-6.0	43.4
Calgary	198.9	545.0	286.3	283.9	-0.8	42.8
Edmonton	166.8	306.2	311.4	395.5	27.0	137.1
Kelowna	21.0	44.1	30.8	54.1	75.5	157.6
Abbotsford-Mission	9.3	12.3	12.1	10.1	-16.7	9.1
Vancouver	332.1	590.3	365.6	330.3	-9.7	-0.5
Victoria	119.8	68.5	63.7	53.6	-15.9	-55.3

^r revised

^p preliminary

1. Go online to view the census subdivisions that comprise the census metropolitan areas.

Note: Data may not add up to totals as a result of rounding.

Value of building permits, by province and territory

	February 2009	December 2009	January 2010 ^r	February 2010 ^p	January to February 2010	February 2009 to February 2010
Seasonally adjusted						
	\$ millions			% change		
Canada	3,607.0	5,960.7	5,679.6	5,650.6	-0.5	56.7
Residential	2,062.1	3,837.7	3,991.0	3,691.2	-7.5	79.0
Non-residential	1,544.9	2,123.0	1,688.5	1,959.4	16.0	26.8
Newfoundland and Labrador	55.5	66.8	86.3	98.5	14.2	77.6
Residential	47.6	56.5	73.9	77.5	5.0	62.8
Non-residential	7.9	10.3	12.4	21.0	69.3	166.4
Prince Edward Island	12.8	11.8	10.8	15.2	41.1	18.8
Residential	6.5	10.0	9.0	10.0	11.0	54.6
Non-residential	6.3	1.8	1.8	5.2	192.9	-17.7
Nova Scotia	79.6	112.1	134.7	99.9	-25.8	25.6
Residential	61.4	87.6	105.2	61.2	-41.8	-0.2
Non-residential	18.2	24.5	29.5	38.7	31.1	112.6
New Brunswick	114.7	107.6	57.5	63.1	9.6	-45.0
Residential	35.0	52.9	35.3	49.9	41.4	42.6
Non-residential	79.7	54.7	22.2	13.1	-40.9	-83.5
Quebec	753.6	1,125.8	1,229.3	1,357.5	10.4	80.1
Residential	528.7	781.5	989.4	938.6	-5.1	77.6
Non-residential	224.9	344.3	239.9	418.9	74.6	86.2
Ontario	1,214.3	2,162.0	2,331.8	2,101.2	-9.9	73.0
Residential	716.9	1,424.0	1,456.6	1,203.2	-17.4	67.8
Non-residential	497.5	737.9	875.3	898.0	2.6	80.5
Manitoba	115.6	106.5	124.4	113.6	-8.7	-1.8
Residential	63.8	84.0	103.2	86.4	-16.3	35.3
Non-residential	51.8	22.5	21.2	27.2	28.3	-47.5
Saskatchewan	94.9	151.3	120.7	123.2	2.1	29.7
Residential	48.0	76.5	78.1	73.6	-5.7	53.3
Non-residential	46.9	74.8	42.6	49.6	16.4	5.6
Alberta	540.9	1,225.6	892.2	1,009.6	13.2	86.7
Residential	239.5	593.4	613.7	690.2	12.5	188.1
Non-residential	301.3	632.2	278.5	319.4	14.7	6.0
British Columbia	615.5	883.7	679.5	657.6	-3.2	6.9
Residential	310.8	665.3	523.7	494.5	-5.6	59.1
Non-residential	304.6	218.4	155.8	163.1	4.7	-46.5
Yukon	3.7	5.8	3.2	6.8	109.0	83.6
Residential	2.5	5.4	2.8	5.4	89.4	115.2
Non-residential	1.2	0.4	0.4	1.4	242.3	18.3
Northwest Territories	5.0	1.8	1.0	4.0	286.9	-19.4
Residential	0.4	0.7	0.2	0.6	244.9	43.8
Non-residential	4.6	1.1	0.9	3.4	295.5	-25.2
Nunavut	1.0	0.0	8.1	0.4	-94.9	-57.6
Residential	1.0	0.0	0.0	0.0	...	-96.6
Non-residential	0.0	0.0	8.1	0.4	-95.3	...

^r revised

^p preliminary

... not applicable

Note: Data may not add up to totals as a result of rounding.

Canadian Foreign Post Indexes

April 2010

Data on Canadian foreign post indexes are now available for April.

Definitions, data sources and methods: survey number 2322.

The April 2010 issue of *Canadian Foreign Post Indexes* (62-013-X, free) is now available from the *Key resource* module of our website under *Publications*.

For more information, contact Client Services (toll-free 1-866-230-2248; 613-951-9606; cpd-info-dpc@statcan.gc.ca). To enquire about the concepts, methods or data quality of this release, contact Claudio Perez (613-951-1733; claudio.perez@statcan.gc.ca), Consumer Prices Division. ■

Cement

February 2010

Data on cement are now available for February.

Available on CANSIM: tables 303-0060 and 303-0061.

Definitions, data sources and methods: survey number 2140.

For more information, or to enquire about the concepts, methods or data quality of this release, contact the dissemination officer (toll-free 1-866-873-8789; 613-951-9497; manufact@statcan.gc.ca), Manufacturing and Energy Division. ■

Federal Jurisdiction Workplace Survey

2008

Data from the Federal Jurisdiction Workplace Survey are now available for 2008.

Definitions, data sources and methods: survey number 5076.

For more information, or to enquire about the concepts, methods or data quality of this release, contact Client Services (613-951-8116; toll-free 1-800-263-1136; infostats@statcan.gc.ca), Client Services Division.

For information about the implications of these data for Part III of the *Canada Labour Code*, contact Craig Eschuk (819-994-1403; craig.eschuk@labour-travail.gc.ca), Strategic Policy, Analysis and Workplace Information Directorate, Human Resources and Skills Development Canada. ■

New products and studies

Canadian Foreign Post Indexes, April 2010
Catalogue number 62-013-X (HTML, free)

All prices are in Canadian dollars and exclude sales tax. Additional shipping charges apply for delivery outside Canada.

Catalogue numbers with an -XWE, -XIB or an -XIE extension are Internet versions; those with -XMB or -XME are microfiche; -XPB or -XPE are paper versions; -XDB or -XDE are electronic versions on diskette; -XCB or -XCE are electronic versions on compact disc; -XVB or -XVE are electronic versions on DVD and -XBB or -XBE a database.

How to order products

To order by phone, please refer to:

- The title
- The catalogue number
- The volume number
- The issue number
- Your credit card number.

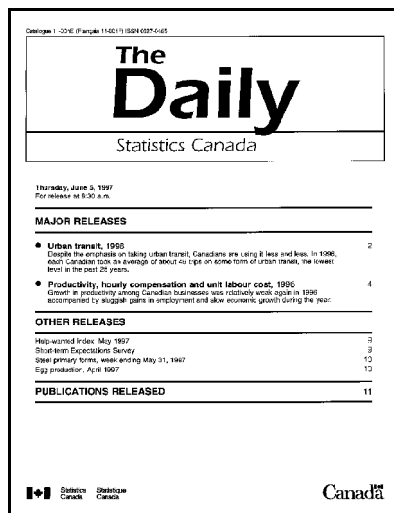
From Canada and the United States, call:
From other countries, call:
To fax your order, call:

1-800-267-6677
1-613-951-2800
1-877-287-4369

To order by mail, write to: Statistics Canada, Finance, 6th floor, R.H. Coats Bldg., Ottawa, K1A 0T6.
Include a cheque or money order payable to **Receiver General of Canada/Publications**. Canadian customers add 5% GST and applicable PST.

To order by Internet, write to: infostats@statcan.gc.ca or download an electronic version by accessing Statistics Canada's website (www.statcan.gc.ca). From the *Our products and services* page, under *Browse our Internet publications*, choose *For sale*.

Authorized agents and bookstores also carry Statistics Canada's catalogued publications.



Statistics Canada's official release bulletin

Catalogue 11-001-XIE.

Published each working day by the Communications and library Services Division, Statistics Canada, 10G, R.H. Coats Building, 100 Tunney's Pasture Driveway, Ottawa, Ontario K1A 0T6.

To access *The Daily* on the Internet, visit our site at <http://www.statcan.gc.ca>. To receive *The Daily* each morning by e-mail, send an e-mail message to listproc@statcan.gc.ca. Leave the subject line blank. In the body of the message, type "subscribe daily firstname lastname".

Published by authority of the Minister responsible for Statistics Canada. © Minister of Industry, 2010. All rights reserved. The content of this electronic publication may be reproduced, in whole or in part, and by any means, without further permission from Statistics Canada, subject to the following conditions: that it be done solely for the purposes of private study, research, criticism, review or newspaper summary, and/or for non-commercial purposes; and that Statistics Canada be fully acknowledged as follows: Source (or "Adapted from", if appropriate): Statistics Canada, year of publication, name of product, catalogue number, volume and issue numbers, reference period and page(s). Otherwise, no part of this publication may be reproduced, stored in a retrieval system or transmitted in any form, by any means—electronic, mechanical or photocopy—or for any purposes without prior written permission of Licensing Services, Client Services Division, Statistics Canada, Ottawa, Ontario, Canada K1A 0T6.