

# The Daily

Statistics Canada

Friday, January 7, 2011

Released at 8:30 a.m. Eastern time

---

## Releases

---

<b>Labour Force Survey, December 2010</b>	2
Employment edged up for the second consecutive month in December, with an increase of 22,000. The unemployment rate held steady at 7.6%. Compared with December 2009, employment increased by 2.2% (+369,000), following a decline of 1.1% the previous year.	
Crude oil and natural gas: Supply and disposition, October 2010	9
Coal and coke statistics, October 2010	10
Supply of natural gas liquids and sulphur products from processing plants, July to September 2010	10

---

## New products and studies

---

<b>Release dates: January 10 to 14, 2011</b>	12
--	----

---



## Releases

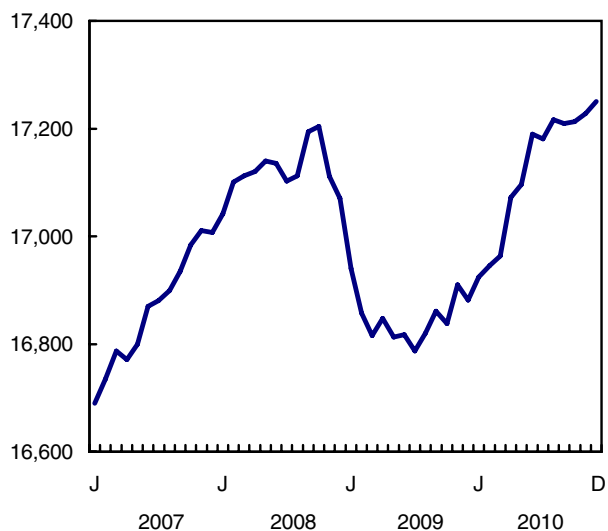
### Labour Force Survey

December 2010

Employment edged up for the second consecutive month in December, with an increase of 22,000. The unemployment rate held steady at 7.6%. Compared with December 2009, employment increased by 2.2% (+369,000), following a decline of 1.1% the previous year.

#### Employment

thousands



There were notable employment increases in December in manufacturing; transportation and warehousing; as well as in natural resources. At the same time, there were declines in construction; health care and social assistance; wholesale and retail trade; business building and other support services; as well as agriculture.

Full-time employment was up 38,000 in December, the fourth increase in the past five months. Despite these recent gains, part-time employment has grown faster (+3.4%) than full time (+1.9%) over the past 12 months. Full-time employment accounted for 81% of total employment in December.

#### Note to readers

Following the release of final population estimates from each census, a standard revision is applied to the Labour Force Survey (LFS) estimates. The revised estimates are scheduled to be released on Friday, January 28, 2011, and will include the following:

LFS estimates are currently based on the 2001 Census population estimates. These data will be adjusted to reflect 2006 Census population estimates and will be revised back to 1996.

Industry estimates will be reclassified to the 2007 North American Industry Classification System (NAICS) from the 2002 NAICS and revised back to 1987.

Geography boundaries will be updated to the 2006 Standard Geographical Classification (SGC) rather than the current 2001 SGC. With this change, six new census metropolitan areas (CMAs) will be added and the boundaries of seven existing CMAs will be modified. New CMA tables will be created based on the 2006 census boundaries and will date back to 1996.

Finally, the 2006 National Occupational Classification for Statistics (NOC-S) will replace the 2001 NOC-S. This change will not affect the LFS estimates as there were only minor changes to the description of the categories.

Please note that the above-mentioned revisions will have a minor impact on the LFS estimates. However, rates of unemployment, employment and participation are essentially unchanged.

During the revision, CANSIM data for the LFS will not be available from Friday, January 21 to Thursday, January 27, 2011. To facilitate access to the revised data, LFS data on CANSIM will be free from January 28 to February 3, 2011.

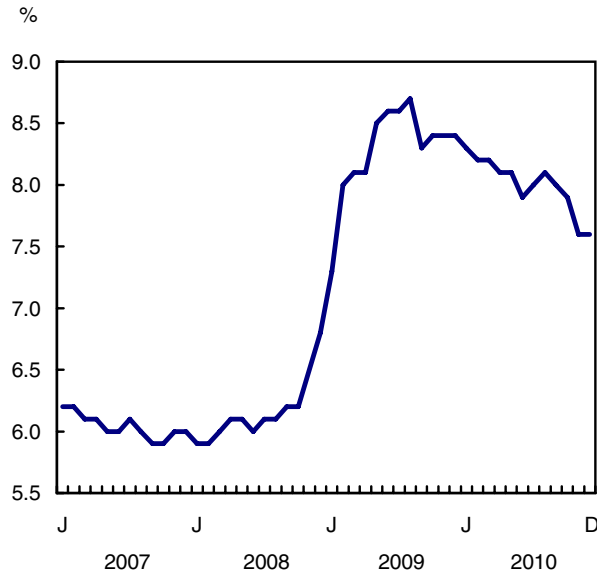
LFS estimates are based on a sample, and are therefore subject to sampling variability. Estimates for smaller geographic areas or industries will have more variability. For an explanation of sampling variability of estimates, and how to use standard errors to assess this variability, consult the "Data quality" section of the publication Labour Force Information (71-001-X, free).

Unless otherwise stated, this release presents seasonally adjusted data, which facilitates comparisons by removing the effects of seasonal variations.

Increases in the number of private sector employees in December were partly offset by declines in self-employment.

Among the provinces, Quebec, Ontario and Newfoundland and Labrador saw employment gains in December, while British Columbia posted declines. Employment was little changed in the other provinces.

**Unemployment rate**



**Strong gains in manufacturing and transportation and warehousing**

Following a decline of 29,000 the previous month, manufacturing employment increased by 66,000 in December. The bulk of the gains were in Ontario and Quebec and were spread across a number of industries. This follows little overall change in the manufacturing sector in the previous 18 months.

Transportation and warehousing also saw a notable gain in December (+45,000). With this gain, employment in this industry was up 10.8% (+85,000) compared with December 2009.

Employment in natural resources increased by 7,700 in December, bringing growth in the industry to 10.8% (+33,000) over the past 12 months.

Employment in construction fell by 27,000 in December, the first notable decline since July 2009. Despite this decline, construction employment was up 4.8% over the past 12 months.

In December, employment in health care and social assistance declined by 24,000, following gains the previous month. Employment growth in this industry totalled 3.3% (+67,000) from a year earlier.

Employment in wholesale and retail trade fell by 22,000 in December. However, employment in this industry was relatively stable in 2010 (+0.7%).

Business, building and other support services also saw employment losses in December (-18,000).

Compared with December 2009, however, employment was up by 8.1% (+50,000).

Agricultural employment fell by 8,000 in December, bringing total losses to 4.2% (-13,000) over the past 12 months.

**More people working in the private sector**

The number of private sector employees increased by 53,000 in December, while self-employment fell by 38,000. At the same time, public sector employment was little changed.

Over the past 12 months, 332,000 (+3.1%) employees were added to the private sector and 143,000 (+4.2%) to the public sector. The number of self-employed declined by 106,000 (-3.9%) over the same period.

**Employment gains in Quebec, Ontario and Newfoundland and Labrador**

Employment in Quebec increased by 25,000 in December, pushing the unemployment rate down 0.3 percentage points to 7.6%. With December's gain, Quebec employment was up 102,000 (+2.6%) from a year earlier.

In Ontario, employment increased for the second consecutive month, up 23,000 in December. The unemployment rate edged down 0.1 percentage points to 8.1%. With December's increase, the number of workers in Ontario grew by 2.8% (+186,000) from a year earlier, above the national growth rate of 2.2%. Over the 12 months of 2009, Ontario's employment was down 1.8%, the largest decline among all provinces.

Newfoundland and Labrador saw employment increases of 2,500 in December, bringing total employment growth in the province to 4.6% (+9,900) compared with the same month a year earlier, the fastest rate of growth in the country.

Employment in British Columbia fell by 23,000 in December, pushing the unemployment rate up 0.7 percentage points to 7.6%. Compared with December 2009, employment in the province grew by 1.5% (+35,000).

**More youths working in December**

Following a large decline in the number of 15- to 24-year-olds participating in the labour market in November, youth employment increased by 26,000 in December. Employment was little changed for the other demographic groups.

Compared with December 2009, youth employment was up 1.8% (+42,000), below the overall employment growth of 2.2%. Over the same period, people aged 55 and over saw their employment levels increase by 6.6% (+186,000), of which half was due to aging of the population, as the number of people in this age group grew by 3.3% over the period. While this age group makes up less than a third of the working-age population, it accounted for 50% of the total employment growth over the past 12 months.

At the same time, people aged 25 to 54 saw their employment level grow by 1.2% (+141,000), primarily driven by men (+2.3%), compared with little growth among women (+0.1%).

### Quarterly update on territories

The Labour Force Survey also collects labour market information about the territories. This information is produced monthly in the form of three-month moving averages. Not all estimates are seasonally adjusted; therefore, comparisons should only be made on a year-over-year basis.

All three territories saw employment gains in the fourth quarter of 2010 compared with the same quarter of 2009.

In the Northwest Territories, employment rose by 1,300 in the fourth quarter of 2010. The unemployment rate also increased by 1.7 percentage points to 7.7%, the result of an increase in the number of people seeking work. The participation rate reached 73.0%, the highest in the country.

In Yukon, employment rose by 1,000 during the three months ending in December 2010 compared with the same period in 2009. This increase pushed the unemployment rate down by 3.5 percentage points

to 4.0% in the fourth quarter of 2010, the lowest nationally.

Nunavut saw employment gains of 900 in the fourth quarter of 2010 compared with the same quarter a year earlier. The unemployment rate increased by 2.5 percentage points to 15.2%, as there were more people participating in the labour market.

**Available on CANSIM: tables 282-0001 to 282-0042, 282-0047 to 282-0064 and 282-0069 to 282-0108.**

**Definitions, data sources and methods: survey number 3701.**

A more detailed summary, *Labour Force Information* (71-001-X, free), is now available online for the week ending December 11. From the *Key resource* module of our website under *Publications*, choose *All subjects*, then *Labour*. LAN and bulk prices are available on request. The DVD-ROM *Labour Force Historical Review, 2009* (71F0004X, \$209), is now available. See *How to order products*.

Data tables are also now available online. From the *Subject* module of our website, choose *Labour*.

The next release of the Labour Force Survey will be on February 4.

For general information or to order data, contact Client Services (toll-free 1-866-873-8788; 613-951-4090; labour@statcan.gc.ca). To enquire about the concepts, methods or data quality of this release, contact Vincent Ferrao (613-951-4750; vincent.ferrao@statcan.gc.ca) or Lahouaria Yssaad (613-951-0627; lahouaria.yssaad@statcan.gc.ca), Labour Statistics Division.

□

**Labour force characteristics by age and sex**

	November 2010	December 2010	November to December 2010	December 2009 to December 2010	November to December 2010	December 2009 to December 2010
Seasonally adjusted						
	thousands		change in thousands		% change	
<b>Both sexes, 15 years and over</b>						
Population	27,868.9	27,894.2	25.3	403.5	0.1	1.5
Labour force	18,654.8	18,674.0	19.2	236.8	0.1	1.3
Employment	17,227.9	17,249.9	22.0	368.5	0.1	2.2
Full-time	13,898.3	13,936.3	38.0	259.1	0.3	1.9
Part-time	3,329.6	3,313.5	-16.1	109.2	-0.5	3.4
Unemployment	1,426.9	1,424.1	-2.8	-131.7	-0.2	-8.5
Participation rate	66.9	66.9	0.0	-0.2	...	...
Unemployment rate	7.6	7.6	0.0	-0.8	...	...
Employment rate	61.8	61.8	0.0	0.4	...	...
Part-time rate	19.3	19.2	-0.1	0.2	...	...
<b>Youths, 15 to 24 years</b>						
Population	4,410.7	4,411.3	0.6	11.0	0.0	0.2
Labour force	2,787.0	2,824.8	37.8	-23.0	1.4	-0.8
Employment	2,407.5	2,433.9	26.4	41.9	1.1	1.8
Full-time	1,260.8	1,272.0	11.2	-0.3	0.9	0.0
Part-time	1,146.7	1,161.9	15.2	42.3	1.3	3.8
Unemployment	379.5	390.9	11.4	-65.0	3.0	-14.3
Participation rate	63.2	64.0	0.8	-0.7	...	...
Unemployment rate	13.6	13.8	0.2	-2.2	...	...
Employment rate	54.6	55.2	0.6	0.8	...	...
Part-time rate	47.6	47.7	0.1	0.9	...	...
<b>Men, 25 years and over</b>						
Population	11,476.4	11,488.9	12.5	195.1	0.1	1.7
Labour force	8,414.0	8,414.7	0.7	146.7	0.0	1.8
Employment	7,836.1	7,844.7	8.6	235.1	0.1	3.1
Full-time	7,233.4	7,233.8	0.4	223.4	0.0	3.2
Part-time	602.7	610.9	8.2	11.7	1.4	2.0
Unemployment	577.9	570.0	-7.9	-88.3	-1.4	-13.4
Participation rate	73.3	73.2	-0.1	0.0	...	...
Unemployment rate	6.9	6.8	-0.1	-1.2	...	...
Employment rate	68.3	68.3	0.0	0.9	...	...
Part-time rate	7.7	7.8	0.1	-0.1	...	...
<b>Women, 25 years and over</b>						
Population	11,981.7	11,994.1	12.4	197.5	0.1	1.7
Labour force	7,453.8	7,434.6	-19.2	113.2	-0.3	1.5
Employment	6,984.3	6,971.3	-13.0	91.5	-0.2	1.3
Full-time	5,404.1	5,430.5	26.4	36.1	0.5	0.7
Part-time	1,580.2	1,540.7	-39.5	55.3	-2.5	3.7
Unemployment	469.5	463.3	-6.2	21.7	-1.3	4.9
Participation rate	62.2	62.0	-0.2	-0.1	...	...
Unemployment rate	6.3	6.2	-0.1	0.2	...	...
Employment rate	58.3	58.1	-0.2	-0.2	...	...
Part-time rate	22.6	22.1	-0.5	0.5	...	...

... not applicable

**Note:** Related CANSIM table 282-0087.

**Employment by class of worker and industry (based on NAICS)<sup>1</sup>**

	November 2010	December 2010	November to December 2010	December 2009 to December 2010	November to December 2010	December 2009 to December 2010
Seasonally adjusted						
	thousands		change in thousands		% change	
<b>Class of worker</b>						
Employees	14,556.1	14,616.0	59.9	474.9	0.4	3.4
Self-employed	2,671.9	2,633.9	-38.0	-106.4	-1.4	-3.9
Public/private sector employees						
Public	3,572.6	3,580.0	7.4	142.9	0.2	4.2
Private	10,983.5	11,036.0	52.5	332.0	0.5	3.1
<b>All industries</b>	<b>17,227.9</b>	<b>17,249.9</b>	<b>22.0</b>	<b>368.5</b>	<b>0.1</b>	<b>2.2</b>
<b>Goods-producing sector</b>	<b>3,787.4</b>	<b>3,828.2</b>	<b>40.8</b>	<b>111.6</b>	<b>1.1</b>	<b>3.0</b>
Agriculture	310.0	302.0	-8.0	-13.3	-2.6	-4.2
Natural resources	330.9	338.6	7.7	32.9	2.3	10.8
Utilities	147.8	150.4	2.6	3.9	1.8	2.7
Construction	1,270.7	1,243.6	-27.1	57.2	-2.1	4.8
Manufacturing	1,727.9	1,793.6	65.7	31.0	3.8	1.8
<b>Services-producing sector</b>	<b>13,440.5</b>	<b>13,421.7</b>	<b>-18.8</b>	<b>256.9</b>	<b>-0.1</b>	<b>2.0</b>
Trade	2,694.3	2,671.9	-22.4	17.9	-0.8	0.7
Transportation and warehousing	830.0	874.5	44.5	85.1	5.4	10.8
Finance, insurance, real estate and leasing	1,085.5	1,087.4	1.9	-25.3	0.2	-2.3
Professional, scientific and technical services	1,275.2	1,281.3	6.1	39.4	0.5	3.2
Business, building and other support services	684.3	666.0	-18.3	49.9	-2.7	8.1
Educational services	1,217.9	1,208.2	-9.7	-20.5	-0.8	-1.7
Health care and social assistance	2,084.6	2,060.7	-23.9	66.7	-1.1	3.3
Information, culture and recreation	775.9	768.5	-7.4	-6.8	-1.0	-0.9
Accommodation and food services	1,063.5	1,067.0	3.5	11.9	0.3	1.1
Other services	755.1	759.7	4.6	-24.6	0.6	-3.1
Public administration	974.2	976.5	2.3	63.1	0.2	6.9

1. North American Industry Classification System.

**Note:** Related to CANSIM tables 282-0088 and 282-0089.

Labour force characteristics by province

	November 2010	December 2010	November to December 2010	December 2009 to December 2010	November to December 2010	December 2009 to December 2010
Seasonally adjusted						
	thousands		change in thousands		% change	
<b>Newfoundland and Labrador</b>						
Population	432.0	432.0	0.0	1.5	0.0	0.3
Labour force	260.6	263.0	2.4	7.0	0.9	2.7
Employment	224.6	227.1	2.5	9.9	1.1	4.6
Full-time	192.6	194.7	2.1	7.8	1.1	4.2
Part-time	31.9	32.4	0.5	2.1	1.6	6.9
Unemployment	36.0	35.9	-0.1	-2.9	-0.3	-7.5
Participation rate	60.3	60.9	0.6	1.4	...	...
Unemployment rate	13.8	13.7	-0.1	-1.5	...	...
Employment rate	52.0	52.6	0.6	2.1	...	...
<b>Prince Edward Island</b>						
Population	118.3	118.4	0.1	2.0	0.1	1.7
Labour force	81.1	80.4	-0.7	0.6	-0.9	0.8
Employment	71.0	70.7	-0.3	-0.5	-0.4	-0.7
Full-time	58.3	58.6	0.3	0.4	0.5	0.7
Part-time	12.8	12.1	-0.7	-0.9	-5.5	-6.9
Unemployment	10.1	9.6	-0.5	1.0	-5.0	11.6
Participation rate	68.6	67.9	-0.7	-0.7	...	...
Unemployment rate	12.5	11.9	-0.6	1.1	...	...
Employment rate	60.0	59.7	-0.3	-1.5	...	...
<b>Nova Scotia</b>						
Population	777.3	777.5	0.2	3.0	0.0	0.4
Labour force	498.1	501.2	3.1	1.3	0.6	0.3
Employment	450.5	449.1	-1.4	-2.9	-0.3	-0.6
Full-time	364.2	368.7	4.5	-0.1	1.2	0.0
Part-time	86.3	80.3	-6.0	-3.0	-7.0	-3.6
Unemployment	47.6	52.1	4.5	4.3	9.5	9.0
Participation rate	64.1	64.5	0.4	0.0	...	...
Unemployment rate	9.6	10.4	0.8	0.8	...	...
Employment rate	58.0	57.8	-0.2	-0.6	...	...
<b>New Brunswick</b>						
Population	626.1	626.3	0.2	3.5	0.0	0.6
Labour force	403.0	400.5	-2.5	-0.7	-0.6	-0.2
Employment	361.7	362.8	1.1	-2.6	0.3	-0.7
Full-time	304.4	307.5	3.1	-2.0	1.0	-0.6
Part-time	57.3	55.3	-2.0	-0.6	-3.5	-1.1
Unemployment	41.4	37.7	-3.7	1.9	-8.9	5.3
Participation rate	64.4	63.9	-0.5	-0.5	...	...
Unemployment rate	10.3	9.4	-0.9	0.5	...	...
Employment rate	57.8	57.9	0.1	-0.8	...	...
<b>Quebec</b>						
Population	6,545.3	6,550.7	5.4	79.0	0.1	1.2
Labour force	4,272.3	4,285.5	13.2	73.3	0.3	1.7
Employment	3,935.5	3,960.2	24.7	101.8	0.6	2.6
Full-time	3,175.0	3,214.3	39.3	76.4	1.2	2.4
Part-time	760.5	745.8	-14.7	25.3	-1.9	3.5
Unemployment	336.8	325.4	-11.4	-28.4	-3.4	-8.0
Participation rate	65.3	65.4	0.1	0.3	...	...
Unemployment rate	7.9	7.6	-0.3	-0.8	...	...
Employment rate	60.1	60.5	0.4	0.9	...	...

... not applicable

Note: Related CANSIM table 282-0087.

Labour force characteristics by province

	November 2010	December 2010	November to December 2010	December 2009 to December 2010	November to December 2010	December 2009 to December 2010
Seasonally adjusted						
	thousands		change in thousands		% change	
<b>Ontario</b>						
Population	10,879.7	10,889.7	10.0	162.1	0.1	1.5
Labour force	7,288.7	7,303.5	14.8	113.3	0.2	1.6
Employment	6,690.4	6,712.9	22.5	185.5	0.3	2.8
Full-time	5,409.1	5,423.2	14.1	121.8	0.3	2.3
Part-time	1,281.3	1,289.7	8.4	63.8	0.7	5.2
Unemployment	598.4	590.7	-7.7	-72.1	-1.3	-10.9
Participation rate	67.0	67.1	0.1	0.1	...	...
Unemployment rate	8.2	8.1	-0.1	-1.1	...	...
Employment rate	61.5	61.6	0.1	0.8	...	...
<b>Manitoba</b>						
Population	942.1	943.1	1.0	14.5	0.1	1.6
Labour force	655.6	654.4	-1.2	13.5	-0.2	2.1
Employment	622.3	620.2	-2.1	16.2	-0.3	2.7
Full-time	503.2	502.4	-0.8	17.7	-0.2	3.7
Part-time	119.2	117.8	-1.4	-1.4	-1.2	-1.2
Unemployment	33.3	34.2	0.9	-2.8	2.7	-7.6
Participation rate	69.6	69.4	-0.2	0.4	...	...
Unemployment rate	5.1	5.2	0.1	-0.6	...	...
Employment rate	66.1	65.8	-0.3	0.8	...	...
<b>Saskatchewan</b>						
Population	795.5	796.1	0.6	11.8	0.1	1.5
Labour force	557.5	557.5	0.0	9.0	0.0	1.6
Employment	527.0	527.0	0.0	4.9	0.0	0.9
Full-time	432.9	433.6	0.7	8.0	0.2	1.9
Part-time	94.1	93.4	-0.7	-3.1	-0.7	-3.2
Unemployment	30.5	30.6	0.1	4.3	0.3	16.3
Participation rate	70.1	70.0	-0.1	0.1	...	...
Unemployment rate	5.5	5.5	0.0	0.7	...	...
Employment rate	66.2	66.2	0.0	-0.4	...	...
<b>Alberta</b>						
Population	2,947.2	2,951.1	3.9	55.8	0.1	1.9
Labour force	2,138.7	2,135.1	-3.6	-0.8	-0.2	0.0
Employment	2,018.8	2,016.4	-2.4	21.1	-0.1	1.1
Full-time	1,668.3	1,662.8	-5.5	31.0	-0.3	1.9
Part-time	350.5	353.6	3.1	-9.9	0.9	-2.7
Unemployment	119.9	118.7	-1.2	-21.9	-1.0	-15.6
Participation rate	72.6	72.3	-0.3	-1.5	...	...
Unemployment rate	5.6	5.6	0.0	-1.0	...	...
Employment rate	68.5	68.3	-0.2	-0.6	...	...
<b>British Columbia</b>						
Population	3,805.5	3,809.3	3.8	70.4	0.1	1.9
Labour force	2,499.1	2,492.9	-6.2	20.2	-0.2	0.8
Employment	2,326.1	2,303.6	-22.5	35.1	-1.0	1.5
Full-time	1,790.4	1,770.5	-19.9	-1.9	-1.1	-0.1
Part-time	535.7	533.1	-2.6	37.0	-0.5	7.5
Unemployment	173.0	189.3	16.3	-14.9	9.4	-7.3
Participation rate	65.7	65.4	-0.3	-0.7	...	...
Unemployment rate	6.9	7.6	0.7	-0.7	...	...
Employment rate	61.1	60.5	-0.6	-0.2	...	...

... not applicable

Note: Related CANSIM table 282-0087.



## Crude oil and natural gas: Supply and disposition

October 2010 (preliminary)

Domestic production of crude oil and equivalent hydrocarbons totalled 14.1 million cubic metres in October, up 4.6% from October 2009.

Crude oil exports declined 2.6% between October 2009 and October 2010. About 63% of Canada's total domestic production went to the export market in October.

Marketable natural gas production totalled 11.9 billion cubic metres in October, up 5.7% from the same month a year earlier.

Domestic sales of natural gas decreased 5.3% between October 2009 and October 2010, while natural gas exports rose 7.9%. Exports accounted for about 62% of marketable natural gas production in October.

Domestic production of crude oil and equivalent hydrocarbons rose 5.6% from September to October, while marketable production of natural gas rose 7.2%.

**Note:** Preliminary data are available on CANSIM at the national level to October 2010 inclusive. At the national and provincial level detailed information is available for crude oil (126-0001) up to May 2010 inclusive, and for natural gas (131-0001) up to June 2010 inclusive.

**Available on CANSIM: tables 126-0001 and 131-0001.**

**Definitions, data sources and methods: survey number 2198.**

For more information, or to enquire about the concepts, methods or data quality of this release, contact the dissemination officer (toll-free 1-866-873-8789; 613-951-9497; [energ@statcan.gc.ca](mailto:energ@statcan.gc.ca)), Manufacturing and Energy Division.

### Crude oil and natural gas: Supply and disposition (key indicators)

	October 2009	September 2010	October 2010 <sup>P</sup>	September to October 2010	October 2009 to October 2010
	thousands of cubic metres			% change	
<b>Crude oil and equivalent hydrocarbons</b>					
<b>Supply<sup>1</sup></b>					
Production	13,457.6	13,327.4	14,072.0	5.6	4.6
Imports <sup>2</sup>	3,561.7	3,574.5	3,050.4	-14.7	-14.4
<b>Disposition</b>					
Refinery receipts <sup>3</sup>	7,884.4	8,095.3	8,285.0	2.3	5.1
Exports	9,066.0	7,945.2	8,830.2	11.1	-2.6
	millions of cubic metres			% change	
<b>Natural gas</b>					
<b>Supply<sup>4</sup></b>					
Marketable production <sup>5</sup>	11,253.8	11,098.6	11,892.8	7.2	5.7
Imports	1,242.7	1,447.9	1,852.4	27.9	49.1
<b>Disposition</b>					
Domestic sales <sup>6</sup>	5,799.4	4,375.3	5,491.7	25.5	-5.3
Exports	6,847.2	7,239.9	7,390.4	2.1	7.9

<sup>P</sup> preliminary

- Disposition may differ from supply because of inventory change, own consumption, losses and adjustments.
- Data may differ from International Trade Division estimates because of timing and the inclusion of crude oil landed in Canada for future re-export.
- Volumetric receipts at refineries of all domestic and imported crude oils for refinery processing or storage.
- Disposition may differ from supply because of inventory change, usage as pipeline fuel, pipeline losses, line-pack fluctuations.
- Receipts from fields after processing for the removal or partial removal of some constituents and impurities and that meet specifications for residential, commercial and industrial use; and including other adjustments.
- Domestic sales includes residential, commercial, industrial and direct sales (for example direct, non-utility, sales for consumption where the utility acts solely as transporter).

---

## Coal and coke statistics

October 2010

Data on coal and coke are now available for October.

**Available on CANSIM: tables 135-0001 and 135-0002.**

Table 135-0001: Coke data.

Table 135-0002: Coal data.

**Definitions, data sources and methods: survey numbers, including related surveys, 2003 and 2147.**

For more information, or to enquire about the concepts, methods or data quality of this release, contact the dissemination officer (toll-free 1-866-873-8789; 613-951-9497; [energ@statcan.gc.ca](mailto:energ@statcan.gc.ca)), Manufacturing and Energy Division. ■

## Supply of natural gas liquids and sulphur products from processing plants

July to September 2010

Monthly data on the supply of natural gas liquids and sulphur products from processing plants are now available for July to September.

**Available on CANSIM: table 131-0002.**

**Definitions, data sources and methods: survey number 2198.**

For more information, or to enquire about the concepts, methods or data quality of this release, contact the dissemination officer (613-951-9497; toll-free 1-866-873-8789; [energ@statcan.gc.ca](mailto:energ@statcan.gc.ca)), Manufacturing and Energy Division. ■

## New products and studies

**Energy Statistics Handbook**, Third quarter 2010  
Catalogue number 57-601-X (CD-ROM, \$54/\$161;  
PDF, free; HTML, free)

All prices are in Canadian dollars and exclude sales tax. Additional shipping charges apply for delivery outside Canada.

**Labour Force Information**, December 5 to 11, 2010  
Catalogue number 71-001-X (PDF, free; HTML, free)

Catalogue numbers with an -XWE, -XIB or an -XIE extension are Internet versions; those with -XMB or -XME are microfiche; -XPB or -XPE are paper versions; -XDB or -XDE are electronic versions on diskette; -XCB or -XCE are electronic versions on compact disc; -XVB or -XVE are electronic versions on DVD and -XBB or -XBE a database.

### How to order products

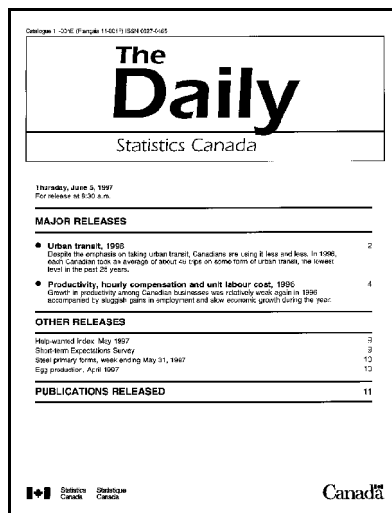
#### To order by phone, please refer to:

- The title
  - The catalogue number
  - The volume number
  - The issue number
  - Your credit card number.
- From Canada and the United States, call: **1-800-267-6677**  
From other countries, call: **1-613-951-2800**  
To fax your order, call: **1-877-287-4369**

**To order by mail, write to:** Statistics Canada, Finance, 6<sup>th</sup> floor, R.H. Coats Bldg., Ottawa, K1A 0T6.  
Include a cheque or money order payable to **Receiver General of Canada/Publications**. Canadian customers add 5% GST and applicable PST.

**To order by Internet, write to:** [infostats@statcan.gc.ca](mailto:infostats@statcan.gc.ca) or download an electronic version by accessing Statistics Canada's website at [www.statcan.gc.ca](http://www.statcan.gc.ca) and browse by "Key resource" > "Publications."

**Authorized agents and bookstores also carry Statistics Canada's catalogued publications.**



### Statistics Canada's official release bulletin

Catalogue 11-001-XIE.

Published each working day by the Communications and Library Services Division, Statistics Canada, 10G, R.H. Coats Building, 100 Tunney's Pasture Driveway, Ottawa, Ontario K1A 0T6.

To access *The Daily* on the Internet, visit our site at <http://www.statcan.gc.ca>. To receive *The Daily* each morning by e-mail, send an e-mail message to [listproc@statcan.gc.ca](mailto:listproc@statcan.gc.ca). Leave the subject line blank. In the body of the message, type "subscribe daily firstname lastname".

Published by authority of the Minister responsible for Statistics Canada. © Minister of Industry, 2010. All rights reserved. The content of this electronic publication may be reproduced, in whole or in part, and by any means, without further permission from Statistics Canada, subject to the following conditions: that it be done solely for the purposes of private study, research, criticism, review or newspaper summary, and/or for non-commercial purposes; and that Statistics Canada be fully acknowledged as follows: Source (or "Adapted from", if appropriate): Statistics Canada, year of publication, name of product, catalogue number, volume and issue numbers, reference period and page(s). Otherwise, no part of this publication may be reproduced, stored in a retrieval system or transmitted in any form, by any means—electronic, mechanical or photocopy—without prior written permission of Licensing Services, Client Services Division, Statistics Canada, Ottawa, Ontario, Canada K1A 0T6.

*The Daily, January 7, 2011*

---

**Release dates: January 10 to 14, 2011**

---

(Release dates are subject to change.)

---

<b>Release date</b>	<b>Title</b>	<b>Reference period</b>
10	<b>Building permits</b>	November 2010
10	<b>National tourism indicators</b>	Third quarter 2010
12	<b>New Housing Price Index</b>	November 2010
13	<b>Canadian international merchandise trade</b>	November 2010
13	<b>Canadian Economic Observer</b>	January 2011
14	<b>New motor vehicle sales</b>	November 2010

---