

# The Daily

Statistics Canada

Thursday, September 26, 2013  
Released at 8:30 a.m. Eastern time

---

## Releases

---

<b>Canada's total population estimates, 2013</b>	2
On July 1, 2013, Canada's population was estimated at 35,158,300, up 404,000 (+1.2%) over the last year. Population growth was lower in the Atlantic provinces and negative in Nova Scotia (-0.5%), while generally higher in the Western provinces, especially in Alberta (+3.4%) and Saskatchewan (+1.9%).	
Final estimates of 2011 Census coverage	7
Construction Union Wage Rate Index, August 2013	8
Poultry and egg statistics, July 2013	9
Canada's population estimates, second quarter 2013	10

---

<b>New products and studies</b>	11
---------------------------------	----

---



---

## Releases

---

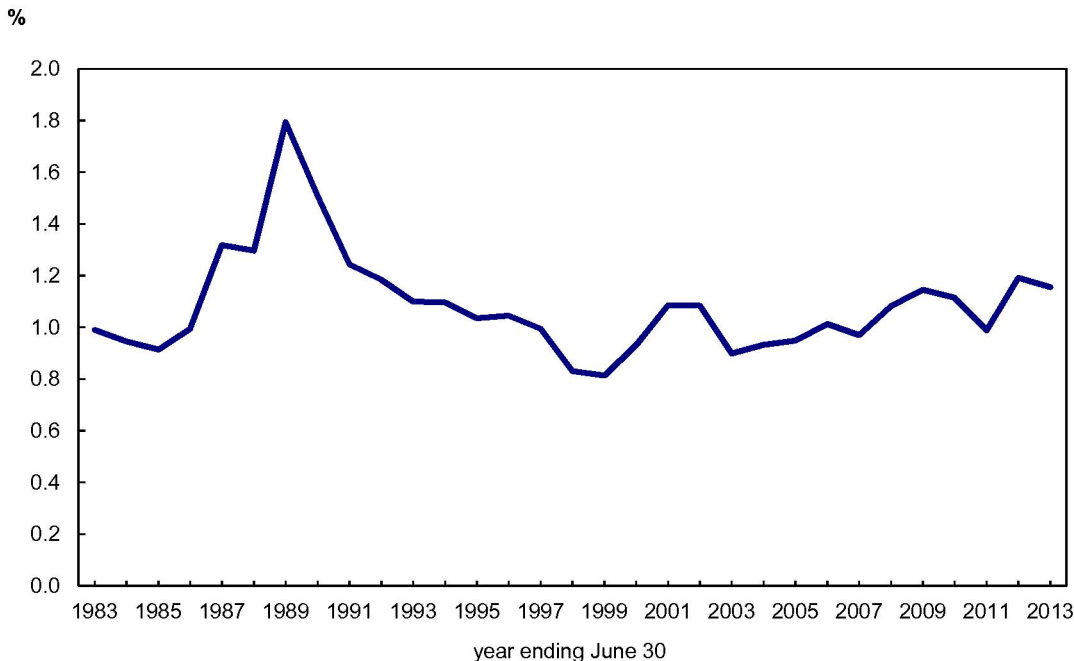
### Canada's total population estimates, 2013

On July 1, 2013, Canada's population was estimated at 35,158,300, up 404,000 (+1.2%) over the last year. This increase was equal to the one observed from July 1, 2011, to July 1, 2012, and similar to the average annual gains for the last 30 years (+1.1%).

Except for the period between 1986 and 1990, the population growth rate has shown little variation in 30 years, ranging from 0.8% to 1.2%. Population estimates released today are now based on the 2011 Census counts adjusted for census net undercoverage and incompletely enumerated Indian reserves.

**Chart 1**  
**Demographic growth rate, Canada, year ending June 30, 1983 to 2013**

---



---

Between 2006 and 2011, Canada's population growth rate (+5.3%) was the highest among the G8 countries. Population growth for other G8 countries ranged from a 0.8% decline in Germany to a 3.4% gain in the United States and the United Kingdom. Among industrialized countries, Canada's population growth fell below the estimated rates for countries such as Luxembourg (+8.7%), Ireland (+7.8%) and Australia (+7.6%).

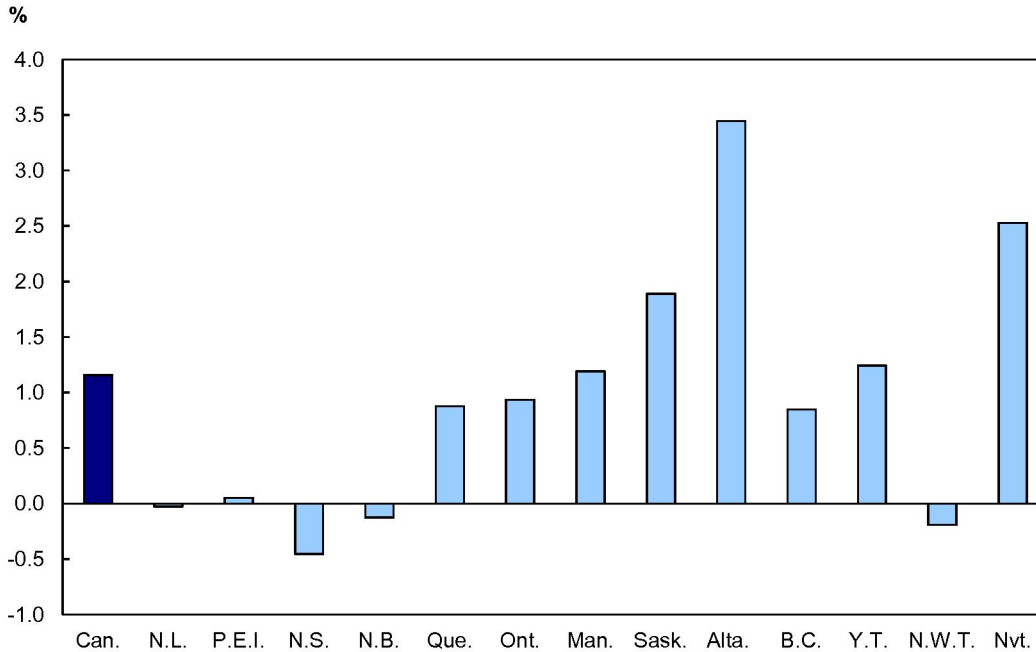
Since 1993/1994, net international migration has been the main source of population growth for Canada. From July 1, 2012, to July 1, 2013, it was responsible for two-thirds of the country's population growth.

### Population growth lower in the Atlantic provinces, higher in the West

For the year ending June 30, 2013, population growth was lower in the Atlantic provinces and negative in Nova Scotia (-0.5%), while generally higher in the Western provinces. Growth exceeded the national level (+1.2%) in Alberta (+3.4%), Nunavut (+2.5%) and Saskatchewan (+1.9%).

Record levels of international migration and interprovincial migration to the province explain this growth in Alberta. In the Atlantic provinces, low growth was mainly explained by a low natural increase and interprovincial migration losses, which reached a six-year high.

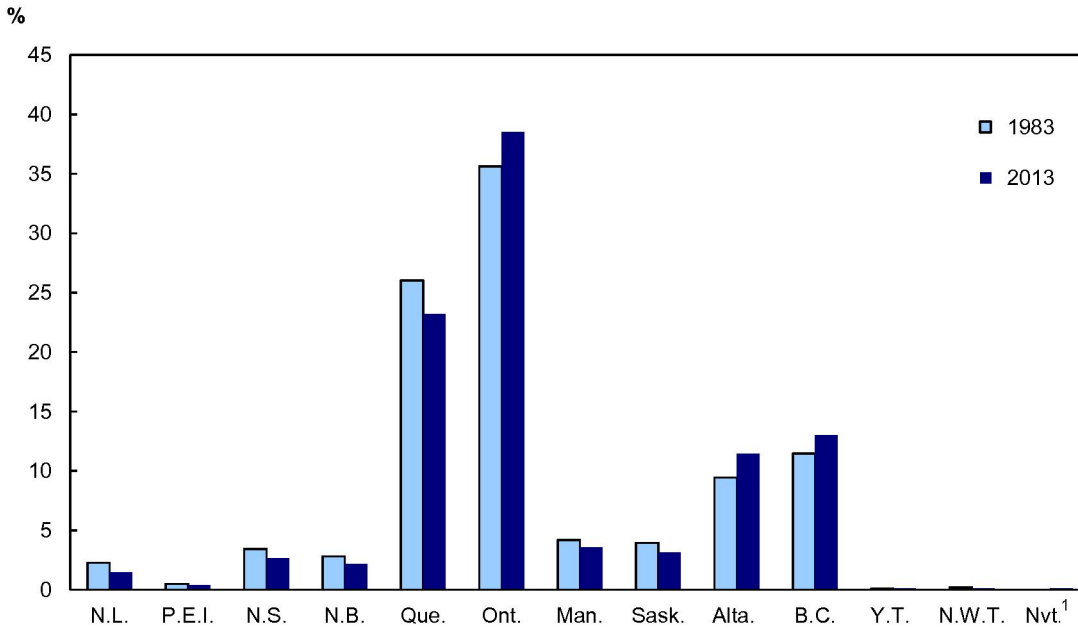
**Chart 2**  
**Demographic growth rate by province and territory, Canada, year ending June 30, 2013**



**Population of Ontario growing at almost twice the rate of Quebec**

In the last 30 years, the populations of the Prairie provinces and British Columbia combined have grown substantially (+39.5%), while the Atlantic provinces have seen their populations edge up 3.5%. By comparison, Canada's population increased by 32.4% during this period. Since 1983, the population share of the Western provinces has increased by 2.2 percentage points, reaching 31.2% on July 1, 2013, compared with a decrease of 2.3 percentage points for the Atlantic provinces with a population share of 6.7%. In turn, the population of Ontario grew almost twice as rapidly (+39.8%) as that of Quebec (+21.0%) during this period. Among the provinces, Alberta has recorded the strongest growth since 1983, with an increase of 50.8%. Population growth in the territories was 43.5% for the same period. On July 1, 2013, three-quarters of Canadians were living in three provinces: Ontario (38.5%), Quebec (23.2%) and British Columbia (13.0%).

**Chart 3**  
**Population shares by province and territory, Canada, July 1, 1983 and 2013**



1. Before 1991, estimates for the Northwest Territories and Nunavut are combined.

Provincial differences in the intensity of the population growth in the past 30 years can be attributed to several factors. For example, interprovincial migration was generally more favourable to the Western provinces and less favourable to the Atlantic provinces. Natural increase was generally higher in the Prairie provinces and in the territories and lower in the Atlantic provinces. Finally, a greater influx of international migrants was observed in Ontario and British Columbia.

### Note to readers

Estimates in this release are based on 2011 Census counts adjusted for census net undercoverage and incompletely enumerated Indian reserves to which is added the estimated demographic growth from May 10, 2011, to June 30, 2013.

The 2011 Census population counts were released on February 8, 2012. Population estimates based on the 2011 Census counts, adjusted for census net undercoverage and incompletely enumerated Indian reserves, will be available in February 2014 for sub-provincial areas.

This release mainly focuses on preliminary postcensal total population estimates as of July 1, 2013. The estimates presented in this release are subject to revision. Future updates could affect the analysis of trends.

Unless otherwise stated, historical comparisons in this analysis relate to the period between July 1, 1971, and July 1, 2013, the period covered by the current system of demographic accounts.

### Definitions

**Natural increase** is the change in population size over a given period as a result of the difference between the number of births and the number of deaths.

**Net international migration** is the change in population size over a given period as a result of movements of population between Canada and other countries that involve a change in the usual place of residence. A distinction is made between immigrants, emigrants, returning emigrants, net temporary emigrants and net non-permanent residents.

At the provincial and territorial level, population growth results not only from natural increase and net international migration, but also from net interprovincial migration. The **net interprovincial migration** is the change in the size of a population during a given period as a result of population movements between Canada's provinces and territories, accompanied by a change in usual place of residence.

**Table 1**  
**Components and factors of demographic growth**

	July 1, 2011, to June 30, 2012 <sup>1</sup>	July 1, 2012, to June 30, 2013 <sup>2</sup>	2011/2012 to 2012/2013
	number		difference
<b>Total growth</b>	<b>411,532</b>	<b>403,992</b>	<b>-7,540</b>
Natural increase	134,117	130,581	-3,536
Births	378,762	383,822	5,060
Deaths	244,645	253,241	8,596
Net international migration	277,415	273,411	-4,004
Immigration	260,115	262,947	2,832
Net non-permanent residents	55,976	49,341	-6,635
Emigration <sup>3</sup>	38,676	38,877	201

1. Updated estimates, with the exception of the immigration estimate which is final.

2. Preliminary estimates.

3. Emigration also takes into account net temporary emigration and returning emigration.

**Table 2**  
**Annual population estimates**

	July 1, 2012 <sup>1</sup>	July 1, 2013 <sup>2</sup>	2012/2013
	number		% rate
<b>Canada</b>	<b>34,754,312</b>	<b>35,158,304</b>	<b>1.2</b>
Newfoundland and Labrador	526,841	526,702	-0.0
Prince Edward Island	145,165	145,237	0.0
Nova Scotia	945,061	940,789	-0.5
New Brunswick	756,997	756,050	-0.1
Quebec	8,084,059	8,155,334	0.9
Ontario	13,411,994	13,537,994	0.9
Manitoba	1,250,032	1,265,015	1.2
Saskatchewan	1,087,546	1,108,303	1.9
Alberta	3,888,739	4,025,074	3.4
British Columbia	4,543,308	4,581,978	0.8
Yukon	36,247	36,700	1.2
Northwest Territories	43,620	43,537	-0.2
Nunavut	34,703	35,591	2.5

1. Updated postcensal estimates.

2. Preliminary postcensal estimates.

**Note(s):** These estimates are based on 2011 Census population counts adjusted for census net undercoverage and incompletely enumerated Indian reserves.

**Available in CANSIM: tables 051-0004, 051-0005, 051-0018 and 051-0019.**

**Definitions, data sources and methods: survey number 3601.**

For a complete and detailed analysis of recent demographic trends, consult *The Annual Demographic Estimates: Canada, Provinces and Territories, 2013* (91-215-X), which is now available from the *Browse by key resource* module of our website under *Publications*.

For more information, or to enquire about the concepts, methods or data quality of this release, contact us (toll-free 1-800-263-1136; 514-283-8300; infostats@statcan.gc.ca) or Media Relations (613-951-4636; mediahotline@statcan.gc.ca).

## Final estimates of 2011 Census coverage

The census attempts to count every person residing in Canada on Census Day. However, two types of errors can occur. Some people who should be enumerated can be missed (undercoverage), while some other persons can be enumerated more than once (overcoverage). The difference between these two coverage errors is called net undercoverage.

Nationally, the final estimate of the 2011 Census net undercoverage rate is 2.3%, compared with 2.8% for the 2006 Census. Net census undercoverage varies from one province and territory to another and from one age group to another.

Data from the 2011 Census will not be revised for net undercoverage, since there is not enough information to accurately adjust census data at all geographical levels and for small subgroups of the population.

The estimates of net undercoverage are combined with the Census counts to produce updated demographic estimates. Updated demography estimates based on 2011 Census counts and their associated net undercoverage are available today.

**Table 1**  
**Final estimates of 2011 Census coverage**

	2006	2011
	net undercoverage rate <sup>1</sup>	
<b>Canada</b>	<b>2.8</b>	<b>2.3</b>
Newfoundland and Labrador	1.0	1.9
Prince Edward Island	1.4	2.4
Nova Scotia	2.6	2.3
New Brunswick	2.2	0.5
Quebec	1.0	1.1
Ontario	3.8	2.9
Manitoba	2.9	1.8
Saskatchewan	2.4	2.9
Alberta	3.5	3.5
British Columbia	2.9	2.0
Yukon	5.6	3.8
Northwest Territories	3.8	4.6
Nunavut	4.1	6.2

1. Estimates of the population living on incompletely enumerated Indian reserves are included in net undercoverage.

### Definitions, data sources and methods: survey number 3902.

For more information, contact us (toll-free 1-800-263-1136; 514-283-8300; infostats@statcan.gc.ca).

To obtain the coverage estimates, contact Karen Bruce (613-951-7298; karen.bruce@statcan.gc.ca), Social Survey Methods Division.

To enquire about the concepts, methods or data quality of this release, contact Christian Thibault (613-951-6935; christian.thibault@statcan.gc.ca), Social Survey Methods Division.

---

## Construction Union Wage Rate Index, August 2013

The Construction Union Wage Rate Index (including supplements) for Canada was unchanged in August compared with the previous month. The composite index increased 1.0% compared with August 2012.

### **Note to readers**

*Union wage rates are published for 16 trades in 22 metropolitan areas for both the basic rates and rates including selected supplementary payments. The indexes (2007=100) are calculated for the same metropolitan areas and are published for those where a majority of trades are covered by current collective agreements.*

*The wage rates and indexes are subject to a 30-month revision period after dissemination of a given month's data. This is because of the length of time that can transpire between the expiration of a collective agreement and the ratification of a new collective agreement. The wage rates and indexes are not seasonally adjusted.*

**Available in CANSIM: tables 327-0003 and 327-0045.**

**Definitions, data sources and methods: survey number 2307.**

The first quarter 2013 issue of *Capital Expenditure Price Statistics*, Vol. 29, no. 1 (62-007-X), is available from the *Browse by key resource* module of our website under *Publications*. The second quarter 2013 issue is scheduled for release in October. This will be the last edition of the publication. In the future, all the information currently in the publication will be available free of charge on our website.

The Construction Union Wage Rate Index for September will be released on October 24.

For more information, or to enquire about the concepts, methods or data quality of this release, contact us (toll-free 1-800-263-1136; 514-283-8300; [infostats@statcan.gc.ca](mailto:infostats@statcan.gc.ca)) or Media Relations (613-951-4636; [mediahotline@statcan.gc.ca](mailto:mediahotline@statcan.gc.ca)).



## **Poultry and egg statistics, July 2013**

Data on the production of eggs, placements of hatchery chicks and turkey poults, and stocks of frozen eggs and poultry meats as well as edible dried egg products are now available for July.

**Available in CANSIM: tables 003-0021 to 003-0024, 003-0038 and 003-0039.**

**Definitions, data sources and methods: survey numbers 3425 and 5039.**

For more information, or to enquire about the concepts, methods or data quality of this release, contact us (toll-free 1-800-263-1136; 514-283-8300; [infostats@statcan.gc.ca](mailto:infostats@statcan.gc.ca)) or Media Relations (613-951-4636; [mediahotline@statcan.gc.ca](mailto:mediahotline@statcan.gc.ca)).

---

## Canada's population estimates, second quarter 2013

Demographic estimates by province and territory are now available for the second quarter.

### **Note to readers**

*Estimates released today are based on 2011 Census counts adjusted for census net undercoverage and incompletely enumerated Indian reserves to which is added the estimated demographic growth for the period from May 10, 2011, to June 30, 2013.*

*These estimates are not to be confused with the 2011 Census population counts that were released on February 8, 2012.*

**Available in CANSIM: tables 051-0005, 051-0006, 051-0017, 051-0020, 051-0037, 051-0045 and 053-0001.**

**Definitions, data sources and methods: survey numbers 3231, 3233 and 3601.**

The April to June 2013 issue of *Quarterly Demographic Estimates*, Vol. 27, no. 2 (91-002-X), is now available from the *Browse by key resource* module of our website under *Publications*.

For more information, or to enquire about the concepts, methods or data quality of this release, contact us (toll-free 1-800-263-1136; 514-283-8300; [infostats@statcan.gc.ca](mailto:infostats@statcan.gc.ca)) or Media Relations (613-951-4636; [mediahotline@statcan.gc.ca](mailto:mediahotline@statcan.gc.ca)).

---

## New products and studies

---

### New products

**Quarterly Demographic Estimates**, Vol. 27, no. 2  
Catalogue number 91-002-X (HTML | PDF)

**Annual Demographic Estimates: Canada, Provinces and Territories, 2013**  
Catalogue number 91-215-X (HTML | PDF)



### **Statistics Canada's official release bulletin**

Catalogue 11-001-X.

Published each working day by the Communications Division, Statistics Canada, 10G, R.H. Coats Building, 100 Tunney's Pasture Driveway, Ottawa, Ontario K1A 0T6.

To access or subscribe to *The Daily* on the Internet, visit our website at <http://www.statcan.gc.ca>.

Published by authority of the Minister responsible for Statistics Canada. © Minister of Industry, 2013. All rights reserved. Use of this publication is governed by the [Statistics Canada Open Licence Agreement](#):

<http://www.statcan.gc.ca/reference/copyright-droit-auteur-eng.htm>