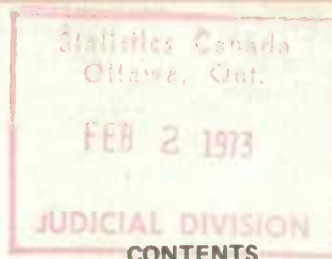


Statistics Canada

weekly



Friday, February 2, 1973

	Page
Labour Income, November 1972 – Advance Information	2
Real Domestic Product, November 1972 – Advance Information	2
Preliminary Statement of Canadian Trade, December 1972 – Published only in Statistics Canada Daily and Weekly	4
Price Indexes, December 1972 – Advance Information	5
Changes in Selected Retail Food Prices, December 1971-December 1972	7
Wholesale Trade, November 1972 – Advance Information	7
Hospital Statistics – Advance Information	7
Agriculture, December 1972 – Advance Information	7
Transportation, December 1972 – Advance Information	8
Industries – Advance Information	8
Other Publications Released	9

Murder Statistics – Due to widespread public interest shown in our January 15 release on murder statistics, we repeat that further details may be obtained from Mrs. T. Bleszynski, Judicial Division, Statistics Canada, Ottawa K1A 0Z5 (613-994-9333). We have taken all possible steps to speed the process of publishing *Murder Statistics*, 1971 (85-209, 75¢) and *Murders Reported*, 1961-1971 (85-503, 75¢), in hopes of releasing these publications earlier than had been previously anticipated.



Labour Income, November 1972 - Advance Information.

Total labour income, not adjusted for seasonal variations, was estimated at \$4,934.4 million in November, 10.9% more than the revised figure (\$4,454.9 million) for a year earlier.

Seasonally-adjusted, the November estimate of \$4,913.8 million was up \$43.0 million or 0.9 from October. All industry divisions contributed to this increase.

Further details will be published in *Labour Income*, October-November (72-005, 20¢/\$2), and additional information is available on request from Mrs. G. Gauthier (613-995-8067), Labour Division, Statistics Canada, Ottawa K1A 0V2.

Real Domestic Product, November 1972 - Advance Information.

Canada's seasonally adjusted Real Domestic Product rose by 0.5% in November. The October level has been revised to 181.0 from 180.5. The major contributors to the November growth were transportation and the components of the index of industrial production - mining, manufacturing and utilities. The mining increase is traceable to mineral fuels and metal mining. Durables led the manufacturing advance.

In transportation, most components increased. However, rail transport contributed most of the advance as carriage of coal, iron ore, grain other than wheat, logs, machinery, sugar and several other commodities all increased.

Wholesale trade registered the major decline.

For further information, order the November 1972 issue of *Real Domestic Product* (61-005, 20¢/\$2).

Wages, Salaries and Supplementary Labour Income

Basis: 1960 Standard Industrial Classification

	Sept./72P	Oct./72P	Nov./72 ^a	Nov./71 ^f
	(\$ millions)			
Unadjusted for Seasonal Variation				
Agriculture	46.2	37.4	30.2	28.3
Forestry	59.0	58.7	56.6	48.8
Mining	105.1	111.9	113.0	103.4
Manufacturing	1,214.0	1,213.4	1,209.1	1,084.5
Construction	406.7	395.1	371.5	348.6
Transportation, Communication and Other Utilities	499.8	505.6	504.0	468.2
Trade	626.3	646.8	662.8	584.9
Finance, Insurance and Real Estate	243.0	246.3	247.6	218.0
Service	1,104.5	1,111.3	1,124.3	1,012.4
Public Administration and Defence ¹	388.3	382.9	380.2	349.4
Total Wages & Salaries ²	4,698.2	4,715.1	4,702.0	4,249.1
Supplementary Labour Income	249.4	241.6	237.4	205.7
Total Labour Income²	4,947.6	4,956.8	4,939.4	4,454.9
Adjusted for Seasonal Variation				
Agriculture	34.0	34.2	34.4	32.3
Forestry	48.6	49.7	51.3	44.3
Mining	105.6	112.0	113.4	103.8
Manufacturing	1,184.8	1,193.6	1,203.0	1,077.6
Construction	354.0	351.1	356.5	335.4
Transportation, Storage & Communication and Other Utilities	487.8	498.7	501.7	466.1
Trade	626.6	640.6	646.4	570.5
Finance, Insurance & Real Estate	244.7	248.1	249.9	219.9
Service	1,087.0	1,092.5	1,103.8	993.3
Public Administration and Defence ¹	384.6	381.8	385.3	353.5
Total Wages & Salaries ²	4,561.7	4,608.7	4,650.7	4,201.3
Supplementary Labour Income	259.8	262.1	263.2	228.1
Total Labour Income²	4,821.6	4,870.8	4,913.8	4,429.4

^a Advance estimates - P Preliminary figures - ^f Revised figures.

¹ Excludes military pay and allowances

² Includes fishing and trapping.

INDEXES OF REAL DOMESTIC PRODUCT

(1961=100)

(Seasonally Adjusted)

	1961 percent- age weight	Sept.	Oct.	Nov.	% Change
Real Domestic Product	100.000	178.1	181.0	181.9	0.5
Agriculture	4.525	144.1	143.5	142.4	-0.8
Forestry	1.231	147.9	134.2	136.3	1.6
Fishing and trapping	0.259	90.1	171.8	145.7	-15.2
Mines (including milling), quarries and oil wells	4.564	192.8	210.0	215.1	2.4
Manufacturing	24.943	191.9	193.7	194.7	0.5
Non-durable manufacturing	13.933	171.4	171.8	172.1	0.2
Durable manufacturing	11.010	217.9	221.5	223.2	0.7
Construction	5.803	166.8	166.3	166.7	0.2
Transportation, storage and communication	9.910	190.6	195.3	197.5	0.1
Transportation	6.873	194.1	200.1	202.2	1.0
Air transport	0.463	422.1	458.9	461.9	0.7
Railway transport	2.859	190.8	193.1	199.8	3.5
Bus transport, interurban and rural	0.096	191.7	193.5	202.1	4.4
Urban transit systems	0.303	104.4	107.9	105.7	-2.0
Pipeline transport	0.451	340.8	355.6	345.0	-3.0
Storage	0.299	133.1	133.5	140.8	5.5
Grain elevators	0.211	124.3	126.0	135.7	7.7
Communication	2.738	188.0	190.1	192.0	1.0
Electric power, gas and water utilities	2.908	229.2	236.4	239.7	1.4
Trade	12.973	180.3	186.7	186.1	-0.3
Wholesale trade	4.906	192.4	200.8	197.3	-1.8
Wholesale merchants	3.491	205.0	213.0	210.3	-1.3
Retail trade	8.067	173.0	178.1	179.3	0.7
Food stores	1.552	153.6	155.1	154.3	-0.5
Department stores	1.161	200.1	200.1	202.1	1.0
General stores	0.239	90.9	92.5	92.6	0.1
Variety stores	0.301	234.4	241.4	242.5	0.5
Motor vehicle dealers	0.926	189.7	216.3	232.2	7.4
Clothing stores	0.507	166.8	175.9	168.0	-4.5
Shoe stores	0.119	140.3	148.2	137.8	-7.0
Hardware stores	0.167	121.8	123.4	120.8	-2.1
Furniture, television, radio and appliance stores	0.345	154.1	152.0	152.2	0.1
Drug stores	0.343	188.9	190.8	194.9	2.1
Finance, insurance and real estate	11.831	152.5	152.7	152.9	0.1
Community, business and personal service industries	13.821	188.3	189.1	189.9	0.4
Education and related services	3.450	245.6	246.7	247.0	0.1
Health and welfare services	3.476	171.4	172.4	173.3	0.5
Motion picture and recreational services	0.400	185.3	185.9	187.1	0.6
Services to business management	1.616	190.0	192.2	193.1	0.5
Personal services	3.766	143.9	144.3	145.1	0.6
Hotels, restaurants and taverns	2.212	159.6	159.9	161.3	0.9
Public administration and defence	7.232	140.3	141.2	142.7	1.0
Special industry groupings					
Real Domestic Product less agriculture	95.475	179.7	182.8	183.7	0.5
Goods-producing industries	44.233	184.4	187.7	188.8	0.6
Goods-producing industries less agriculture	39.708	189.0	192.7	194.1	0.7
Service-producing industries	55.767	173.0	175.7	176.4	0.4
Commercial industries	85.478	179.7	183.0	183.8	0.5
Commercial industries less agriculture	80.953	181.7	185.2	186.1	0.5
Non-commercial industries	14.522	168.6	169.6	170.5	0.6
Index of Industrial Production	32.415	195.4	199.8	201.6	0.9

Preliminary Statement of Canadian Trade, December 1972 — Published only in Statistics Canada Daily and Weekly.

Imports rose by \$3.1 billion or nearly 20% to a new high of \$18.7 billion in 1972. Exports, as previously reported, increased by \$2.1 billion or 12% to a record level of \$19.9 billion. As a result, the trade surplus declined substantially for the second successive year to \$1.2 billion from \$2.1 billion. This trade balance was significantly higher than the balance of \$0.8 billion in 1969.

Trade balances with major trading areas, apart from Latin America, deteriorated either through lower surpluses (as with the United Kingdom and the United States) or by a shift to a deficit position (as with the Commonwealth and Preferential Countries, Japan, and the European Economic Community).

Trade with Australia, India, South Africa, Hong Kong and the Trucial States (with higher petroleum imports) contributed to the worsening of more than \$200 million in the trade balance with Commonwealth and Preferential Countries.

All trading areas shared in the 1972 growth in imports, with the United States accounting for almost \$2,000 million, Japan and "other countries" for over \$300 million each, and the Common Market for some \$200 million.

All categories of import demand were strong, as business and consumer spending increased purchases of automotive products (up \$860 million), food (\$220 million), communication equipment (\$190 million) and clothing (\$90 million). Business spending was reflected in higher purchases of industrial machinery (\$265 million), crude petroleum (\$140 million) and office machines (\$80 million). Imports of aircraft and parts, metal ores, and petroleum and coal were little changed.

Seasonally adjusted imports in December, at \$1,706 million, carried the fourth-quarter level to \$5,044 million, exceeding the third-quarter level by some \$380 million, with most of the increase occurring in purchases from the United States.

Unadjusted December imports, at \$1,533 million, were \$205 million or some 16% higher than for December 1971. This growth was attributable largely to imports from the United States, which rose more than \$200 million with automotive products accounting for two-thirds or some \$135 million. Imports of industrial machinery and food increased more moderately, while metal ores, office machines, and iron and steel declined.

For further information, order the December issues of *Summary of Exports* (65-002, 20¢/\$2) and *Summary of Imports* (65-005, 20¢/\$2).

Preliminary Statement of Canadian Trade, December

	Total Exports		Imports		Trade Balance		Percentage Change 1971 to 1972	
	1971	1972	1971	1972	1971	1972	Total Exports (%)	Imports (%)
	(\$ millions)							
Month of December								
United Kingdom	124.9	117.8	68.5	70.2	56.4	47.6	- 5.7	2.5
Other Commonwealth and Preferred	68.9	61.1	57.8	63.0	11.1	- 1.9	-11.3	9.0
United States	1,010.2	1,186.8	911.7	1,113.8	98.5	73.0	17.5	22.2
Japan	80.1	78.5	82.6	70.5	- 2.6	8.0	- 2.0	-14.6
European Economic Community	90.1	109.6	78.7	78.5	11.4	31.3	21.6	-0.3
Latin America	47.6	50.1	52.5	46.2	- 4.9	3.9	5.3	-12.0
Other Countries	129.2	131.5	75.9	91.0	53.3	40.5	1.8	19.9
Total Commonwealth and Preferred	193.8	179.0	126.3	133.2	67.5	45.8	- 7.6	5.5
Total Others	1,357.2	1,556.5	1,201.5	1,400.0	155.7	156.5	14.7	16.5
Grand Total	1,551.0	1,735.5	1,327.8	1,533.2	223.2	202.3	11.9	15.5
January-December								
United Kingdom	1,361.4	1,312.3	837.3	946.2	524.1	366.1	- 3.6	13.0
Other Commonwealth and Preferred	698.5	626.1	622.5	768.9	76.0	-142.8	-10.4	23.5
United States	12,006.1	13,873.7	10,945.0	12,895.8	1,061.1	977.9	15.6	17.8
Japan	830.9	961.2	801.9	1,102.0	29.0	-140.8	15.7	37.4
European Economic Community	1,104.3	1,116.3	935.4	1,145.9	169.0	- 29.6	1.1	22.5
Latin America	564.0	611.5	606.8	657.5	-42.8	- 46.0	8.4	8.4
Other Countries	1,187.5	1,397.6	862.5	1,184.2	325.0	213.4	17.7	37.3
Total Commonwealth and Preferred	2,059.9	1,938.5	1,459.7	1,715.2	600.2	223.3	- 5.9	17.5
Total Others	15,692.8	17,960.2	14,151.5	16,985.4	1,541.3	974.8	14.4	20.0
Grand Total	17,752.7	19,898.7	15,611.3	18,700.6	2,141.5	1,198.1	12.1	19.8

Export and Import values for 1972 are preliminary estimates and may not add because of rounding.

**Prices and Price Indexes, Industry Selling Price Index:
Manufacturing, December 1972 - Advance Information.**

The industry selling price index for total manufacturing (1961=100) moved 0.9% higher in December to 130.8 from the November index of 129.6. It was 6.2% higher than the December 1971 index of 123.2. Of the 101 industry indexes included in the total, 54 were higher, 8 declined and 39 were unchanged.

In terms of the relative contribution to the overall change in the total manufacturing index the more

notable changes were increases recorded in the foods and beverages group, particularly in the feed manufacturers, vegetables oil mills and slaughtering and meat packing industries. Increases also occurred in the primary metals group reflecting higher prices registered in the smelting and refining, and iron and steel mills industries. Price increases recorded for automobiles were mainly responsible for advances in the transportation equipment industries group. Decreases during the month were insignificant with the exception of the leather products group, where lower prices reported in the leather tanneries industry marked the first decline in that major group since mid 1971.

Industry Selling Price Indexes

	December/November			Major Group Indexes		
	Number of Industries			Dec.	Nov.	Dec.
	Increases	Decreases	Unchanged	1972	1972	1971
All industries	54	8	39	130.8	129.6	123.2
Foods and beverages industries	13	-	10	142.6	140.5	130.3
Tobacco and tobacco products industries	1	-	-	*	*	*
Rubber products industries	1	-	1	111.2	111.0	109.8
Leather industries	1	1	1	160.2	162.1	132.6
Textile industries	3	1	5	108.6	108.4	104.7
Knitting mills industries	-	-	2	100.5	100.5	98.4
Clothing industries	1	-	-	*	*	*
Wood industries	5	1	-	191.5	189.9	151.8
Furniture and fixture industries	2	-	1	132.9	132.7	125.8
Paper and allied industries	3	-	3	121.4	120.4	118.6
Primary metal industries	5	-	2	138.3	136.9	131.6
Metal fabricating industries	3	-	1	*	*	*
Machinery industries	1	-	-	*	*	*
Transportation equipment industries	2	1	-	*	*	*
Electrical products industries	4	1	2	*	*	*
Non-metallic mineral products industries	3	2	4	136.3	135.7	128.3
Petroleum and coal products industries	1	-	1	115.6	115.6	114.7
Chemical and chemical products industries	4	1	2	105.2	104.6	103.3
Miscellaneous manufacturing industries	1	-	4	*	*	*

*Indexes not available at this level of aggregation.

General Wholesale Index

The general wholesale price index (1935-39=100) rose 1.7% in December to 327.9 from the November index of 322.4. It was 11.0% higher than the December 1971 index of 295.5. All eight major group indexes were higher.

The vegetable products group index rose 5.1% in December to 280.7 from 267.0 on higher prices for grains, sugar and its products, bakery products, fresh fruits, rubber and its products and vegetable oils. An advance of 1.7% to 392.2 from 385.8 in the animal products group index reflected price increases for livestock, fishery products, fresh meats and eggs.

Higher prices for copper and its products and silver were chiefly responsible for a rise of 1.3% to 272.3 from 268.9 in the non-ferrous metals products group index. An advance of 0.7% to 464.1 from 460.7 in the wood products group index reflected price increases for fir, cedar and hemlock. The iron products group index moved 0.6% higher to 333.6 from 331.6 on higher prices for rolling mill products, and wire. An increase of 0.5% to 247.9 from 246.7 occurred in the chemical products group index on higher prices for fertilizer materials and paint materials. Fractionally higher price movements were recorded in the textile products group to 283.0 from 281.9 and in the non-metallic minerals group to 235.1 from 235.0

(see table on next page)

General Wholesale Index
(1935-1939=100)

	% Change					
	Dec.* 1972	Nov.* 1972	Dec. 1971	Nov. 1971	Dec/72 Nov/72	Dec/72 Dec/71
General Wholesale Index	327.9	322.4	295.5	293.7	1.7	11.0
Vegetable products	280.7	267.0	236.5	232.9	5.1	18.7
Animal products	392.2	385.8	341.1	336.0	1.7	15.0
Textile products	283.0	281.9	266.6	265.1	0.4	6.2
Wood products	464.1	460.7	410.8	410.6	0.7	13.0
Iron products	333.6	331.6	320.5	319.5	0.6	4.1
Non-ferrous metals	272.3	268.9	255.2	257.7	1.3	6.7
Non-metallic minerals	235.1	235.0	227.6	227.4	-	3.3
Chemical products	247.9	246.7	240.4	239.1	0.5	3.1
Iron and non-ferrous metals (excluding gold)	361.9	358.8	344.8	345.9	0.9	5.0
Raw and partly manufactured goods	298.0	288.0	255.5	253.5	3.5	16.6
Fully and chiefly manufactured goods	344.8	341.8	318.0	316.4	0.9	8.4

*Preliminary figures.

Prices and Price Indexes (Building Construction Price Indexes) December 1972 -- Advance Information.

	Dec. 1972	Nov. 1972	Dec. 1971	Nov. 1971	Dec. 1972 Nov. 1972	Dec. 1971 Nov. 1971	Dec. 1972 Dec. 1971
	(1961=100)				(%)		
Residential Building Materials	171.6	170.8	149.0	149.1	0.5	-0.1	15.2
Lumber and Lumber Products	192.9	192.0	148.5	158.9	0.5	-0.3	21.7
Plumbing and Heating Equipment	134.0	133.8	133.5	134.3	0.1	-0.6	0.4
Wallboard and Insulation	142.9	142.9	137.9	132.5	-	4.1	3.6
Concrete Products	139.6	138.9	130.5	130.5	0.5	-	7.0
Other	143.4	142.5	135.7	135.9	0.6	-0.1	5.7
Non-residential Building Materials	146.6	146.0	136.5	136.0	0.4	0.4	7.4
Steel and Metal Work	142.2	142.2	136.3	134.9	0.1	1.0	4.5
Plumbing, Heating and Other Equipment	145.4	145.4	143.3	143.7	-	-0.3	1.5
Electrical Equipment	109.3	108.0	107.5	107.1	1.2	0.4	1.7
Concrete Products	141.0	140.6	131.7	131.7	0.3	-	7.1
Lumber and Lumber Products	217.8	215.5	167.8	167.3	1.1	0.3	29.8
Other	139.9	139.0	132.1	131.1	0.6	0.8	5.9
Wages	244.1	243.9	221.7	221.7	0.1	-	10.1
Fixed-weighted composite indexes of building materials and wage rates							
Residential	206.5	206.0	184.0	184.0	0.2	-	12.2
Non-residential	190.4	190.0	174.8	174.5	0.2	0.2	8.9

For further information, order the December issue of *Prices and Price Indexes* (62-002, 40¢/\$4), or contact Mr. A.J. Byrne (613-992-6216), Prices Division, Statistics Canada, Ottawa, K1A 0V5.

Prices and Price Indexes-Farm Input Price Indexes, 4th Quarter 1972 -- Advance Information.

	Eastern Canada Quarter			Western Canada Quarter			Canada Quarter		
	4th 1972	3rd 1972	4th 1971	4th 1972	3rd 1972	4th 1971	4th 1972	3rd 1972	4th 1971
Total Farm Inputs^P	144.6	141.9	136.1	143.0	141.1	136.4	143.9	141.5	136.2
Land and farm buildings ^P	171.0	168.1	158.9	163.6	161.6	156.9	167.3	164.8	157.9
Farm machinery and motor vehicles	134.3	134.9 ^r	132.1	132.1	131.7 ^r	128.4	132.9	132.9 ^r	129.8
Hired farm labour	199.6	197.0	188.6	188.3	183.7	171.8	195.3	191.9	182.2
Other materials and services	127.1	122.9	117.6	131.9	128.4	123.5	128.7	124.7	119.5

^P - Preliminary figures - ^r - Revised figures

For further information, order *Prices and Price Indexes*, December 1972 (62-002, 40¢/\$4), or contact Mr. R.T. Richards (613-992-6216), Prices Division, Statistics Canada, Ottawa K1A 0V5.

Weekly Security Price Indexes

Index	Number stocks priced	Jan. 25/73 This week	Jan. 18/73 Week ago 1961=100	Dec. 28/72 Month ago
Investors price index	114	190.9	196.6	189.8
Industrials	80	201.9	208.4	199.2
Utilities	20	156.6	158.3	154.2
Mining stock price index	24	118.6	121.3	104.5
Finance	14	187.5	194.7	195.3
Uraniums price index	4	181.9	188.2	163.6
Primary oils and gas	6	569.5	582.7	555.1

For further information, order the January issue of *Prices and Price Indexes* (62-002, 40¢/\$4), or contact Mr. J. Boulet (613-992-8270), Prices Division, Statistics Canada, Ottawa, K1A 0V6.

Changes in Selected Retail Food Prices, December 1971-December 1972, Retail Prices and Living Costs Service Bulletin (62-005, \$2 a year), Vol. 2, No. 1.

The consumer price index for food consumed at home was 8.8% higher in December 1972 than a year earlier. Generally, Canadian shoppers were most affected by a 14.7% increase in the meat, fish and poultry index, and an 8.9% rise in fruit prices.

Among a selection of 75 individual foodstuffs, higher average urban retail prices were registered for 66 items and lower prices for only 9. An increase of 46.5% in bacon prices led the general advance in pork products while among beef prices the greatest advance was a 17.3% rise in hamburger. Chicken rose by 18.3%. Fresh milk retailed 2.3% higher and butter edged up by about 1% over the year, but the price of margarine moved down by 1.3%. Instant and ground coffee prices moved up by 6.7% and 5.5%, respectively, while tea bags were 3.3% dearer. Only a few fresh vegetables (which normally fluctuate considerably from month to month) notably tomatoes, lettuce and celery, registered December 1972 price averages appreciably below those of December 1971.

Wholesale Trade, November 1972 — Advance Information.

Sales by wholesale merchants for November were estimated at \$2,542 million, up 13.1% from a year earlier.

In the consumer goods trades the most significant sales change from November 1971 was registered by the meat and dairy products component, showing an increase of 21.4%. In the industrial goods trades one of the most notable item was an increase of 23.3% in the electrical wiring supplies, construction materials, apparatus and equipment category.

Wholesale inventories were valued at \$3,808 million, up 15.5%.

Further details may be obtained from *Wholesale Trade* (63-008, 10¢/1).

Tobacco Stocks, December 31, 1972 — Published only in the Statistics Canada Daily and Weekly.

Canadian processors and manufacturers held 205.7 million pounds (redried weight) of flue-cured bright Virginia tobacco on December 31, 1972. Some 76.9 million pounds were from the 1972 crop (128.8 million from previous crops); 181.8 million were destined for domestic consumption and 23.9 million for export.

For further information, contact Charlie Neville (613-992-2231), Manufacturing and Primary Industries Division, Statistics Canada, Ottawa, K1A 0V6.

Hospital Statistics, Volume IV, Balance Sheets, 1970 — Advance Information.

Total integrated fund assets reported by public general and allied special hospitals reached almost \$2,920 million on December 31, 1970 — up 6.0% from a year earlier. Total liabilities reported increased by 9.3% to \$1,028 million. Over the same period the cost of buildings and building service equipment per rated bed increased by 2.6% to \$16,925 and the cost of major equipment per rated bed rose by 7.9% to \$5,101.

For further information, order *Hospital Statistics, Volume IV, 1970* (83-213, \$1).

Report on Livestock Surveys, Pigs, December 1, 1972 (23-005, \$1 a year).

Total pig numbers were estimated at 7,301,000 on December 1, for all of Canada except Newfoundland. This was 1% fewer than a year earlier, with numbers down 5% in the West and 3% in the East.

Sows and gilts were up 6%, farrowings down 2%, sows to farrow up 3%, and the fall pig crop down 1%.

The United States pig inventory decreased 2% to 61.5 million head, with breeding hogs up 6%.

Quarterly Hospital Indicators, January-September 1972 — Advance Information.
Public General Hospital Highlights

	Third Quarter	
	1971	1972
Occupancy (%)	82.6	78.3
Admissions per rated bed	22.1	21.8
Average length of stay (days)	10.0	9.7
Paid Hours per patient-day	14.3	14.7
Cost per patient-day	\$64.30	\$71.73
Gross Salaries and Wages per patient-day	\$46.11	\$51.14
Medical and Surgical Supplies cost per patient-day	\$2.15	\$2.44
Drug cost per patient-day	\$1.93	\$2.06

For a full report of the 163 ratios related to utilization, services, workload and unit costs of participant Canadian hospitals on a cumulative quarterly basis, order *Quarterly Hospital Indicators, January-September 1972* (83-001, \$1/\$4).

Production of Eggs, December 1972 (23-003, 10¢/\$1).

Canadian egg production declined by 4.6% to 39.0 million dozen in 1972 from 40.8 million a year earlier. The average number of layers was down 5.1% to 26.7 million from 28.1 million while the number of eggs per 100 layers increased 0.6% to 1,753 from 1,743. Farm Price of eggs sold for market was up 21.3% to 42.7¢ per dozen compared with 35.2¢ per dozen.

Weekly Railway Carloadings, January 14, 1972 — Advance Information.

Railways in Canada loaded 3,868,982 tons of revenue carload freight during the 7-day period ending January 14. This was 4.1% more than in the comparable period of 1972. Year-to-date loadings increased 5.6%.

For further information, order the January issue of *Railway Carloadings* (52-001, 20¢/\$2).

Electric Power Statistics Vol. II 1971 — Advance Information.

Net generation (total generation less energy used in generating station service) increased 5.7% in 1971 to 216.5 billion kwh. from 204.7 billion one year earlier. Generation by electric utilities increased 7.0% to 184.0 billion kwh. from 171.9 billion, accounting for 85.0% of the total production. Generation by industry decreased 0.9% to 32.5 billion kwh. from 33.0 billion.

While total generation rose by 5.7%, electric energy made available in Canada increased by 5.0% with imports rising 4.1% to 3.38 billion kwh. from 3.25 billion and exports increasing 30.0% to 7.32 billion from 5.63 billion.

Total sales of electricity to ultimate customers (including sales to industrial establishments with generating facilities) increased 6.2% to 169.1 billion kwh. from the 1970 total of 159.2 billion. Power customers purchased 90.8 billion kwh. or 53.7% of the total (55.5% in 1970); general service (commercial) customers, 30.3 billion kwh. or 17.9%

Railway Carloadings, December 1972 — Advance Information.

Railways in Canada loaded 17.8 million tons of revenue freight in December 1972, up 9.0% over the previous December. Carloads increased 4.8% to 310,641. Receipts from United States connections increased 9.1% to 2.13 million tons, leaving total traffic carried 9.0% higher at 19.9 million tons.

Commodities showing major tonnage increases included coal and grains other than wheat while wheat itself was down.

Year-to-date loadings were up 0.3% to 213.9 million tons, while total traffic carried during the year rose 0.5% to 238.4 million tons.

For further information, order the December issue of *Railway Carloadings* (52-001, 20¢/\$2).

(16.3% in 1970); and domestic and farm customers, 46.5 billion kwh. or 27.5% (27.3% in 1970). Street lighting accounted for the remaining 1.5 billion kwh. of electricity sold.

Further details will be contained in *Electric Power Statistics, Vol. II, 1971* (57-202, \$1 a year), or contact Ian Cavanagh (613-992-4021), Energy and Minerals Section, Statistics Canada, Ottawa K1A 0V6.

Coal and Coke Statistics, November 1972 — Advance Information.

Raw coal production jumped 52.1% to 2,466,044 tons in 1972 from 1,621,308 (revised) tons a year earlier. Imports increased to 2,448,462 tons from 902,568 tons. Industrial consumers used 1,599,039 tons of coal (down by 64,022 tons) and 389,751 tons of coke, (down 60,682 tons).

For further information, order the November issue of *Coal and Coke Statistics* (45-002, 30¢/\$3), or *Energy Statistics Service Bulletin* (57-002, \$3), or contact Ian Cavanagh (613-992-4021), Energy and Minerals Section, Statistics Canada, K1A 0V6.

Other Publications Released

Employment, Hours and Earnings, July 1972 (72-002, 40¢/\$4)
Summary of Imports, November 1972 (65-005, 20¢/\$2)
Canadian Statistical Review, January 1973 (11-003, 50¢/\$5)
Vital Statistics, November 1972 (84-001, 10¢/\$1)
New Motor Vehicle Sales, November 1972 (63-007, 20¢/\$2)
The Wheat Review, December 1972 (22-005, 30¢/\$3)
Railway Transport, Part VI, Employment Statistics, 1971 (52-212, 50¢)
Urban Transit, November 1972 (53-003, 10¢/\$1)
Chain Store Sales and Stocks (63-001, 10¢/\$1), November 1972
Selected Meat and Meat Preparations (32-020, 10¢/\$1), November 1972
Particle Board (36-003, 10¢/\$1), November 1972
Distilled Beverage Spirits and Industrial Ethyl Alcohol (32-021, 10¢/\$1), November 1972
Specified Domestic Electrical Appliances (43-003, 10¢/\$1), November 1972
Breweries (32-019, 10¢/\$1), November 1972
Consumption, Production and Inventories of Rubber (33-003, 20¢/\$2), November 1972
Radio and Television Receiving Sets (43-004, 20¢/\$2), November 1972
Cheques Cashed in Clearing Centres, November 1972 (61-001, 20¢/\$2)
Export Commodity Classification, Vol. III, January 1973 (12-523, \$3)
Transcontinental and Regional Air Carrier Operations, November 1972 (51-001, 30¢/\$3)
Report on Fur Farms, 1971 (23-208, 50¢)
Iron Castings and Cast Iron Pipe and Fittings, November 1972 (41-004, 10¢/\$1)
Peeler Logs, Veneers and Plywoods, November 1972 (35-001, 20¢/\$2)
Soaps and Synthetic Detergents, November 1972 (46-003, 10¢/\$1)
New Residential Construction, November 1972 (64-002, 40¢/\$4)
Dairy Review, December 1972 (23-001, 20¢/\$2)
Imports by Commodities, November 1972 (65-007, 75¢/\$7.50)
Juvenile Delinquents, 1970 (85-202, 75¢)
Quarterly Shipments of Office Furniture Products, First Quarter 1972 (35-006, 25¢/\$1)
The Crude Petroleum and Natural Gas Industry, 1971 (26-213, 50¢)
Consumer Credit, November 1972 (61-004, 20¢/\$2)
Export Commodity Classification, Vol. 1, 1972 (12-521, \$5)
Electric Power Statistics, November 1972 (57-001, 20¢/\$2)
Railway Operating Statistics, September 1972 (52-003, 10¢/\$1)
International Air Charter Statistics, July-September 1972 (51-003, 75¢/\$3)
Fish Freezings and Stocks, November 1972 (24-001, 30¢/\$3)
Monthly Review of Canadian Fisheries, November 1972 (24-002, 30¢/\$3)
Shipments of Prepared Stock and Poultry Feeds, November 1972 (32-004, 20¢/\$2)
Preliminary Bulletin - 1971 Census of Manufactures (\$3.50 for series), Miscellaneous Clothing Industries (34-218-P); Manufacturers of Major Appliances (43-204-P);
1971 Census of Manufactures (47-205-p, free to subscribers), Broom,
Brush and Mop Manufacturers: (47-204-p, free to subscribers), Toys and Games Manufacturers: (46-216-p, free to subscribers), Manufacturers of Printing Inks.
Census of Manufactures, 1971 (\$3.50 for the series): Manufacturers of

(continued)

Lubricating Oils and Greases (45-205-P); Manufacturers of Lighting Fixtures (43-211-P); Miscellaneous Petroleum and Coal Products Industries (45-207-P).

Service Bulletins - Selected Dairy By-Products (32-024, \$1 a year): Vol. 1, No. 18, Production and Inventory of Dry Skim Milk Powder, December 1972; December 1972; Vol. 1, No. 19, Production and Inventory of Process Cheese.

Aviation (51-004, \$3 a year), Vol. 5, No. 6, Aircraft Movement Statistics, October 1972.

Energy Statistics (57-002, \$3 for the series), Vol. 8, No. 7, Preliminary Report on Coal Production and Landed Imports of Coal, by Province, December 1972;

Fish and Fish Products (34-002, \$1 for the series), Vol. 1, No. 76, Fish Freezings and Stocks, Quebec, December 1972.

Rubber and Plastics Products Industries (47-002, \$1 a year), Vol. 1, No. 11,

Factory Shipments of High Pressure Decorative Laminate Sheet, Quarter Ended December 31, 1972.

Fabricated Metal Products (41-009, \$2 a year), Factory Shipments of Truck Bodies 1971

Construction Price Statistics (62-006, \$3 a year), Vol. 1, Nos. 5 and 6

Fish and Fish Products (24-003, \$1 a year), Vol. 1, No. 77, Advance Release of Fish Landings, British Columbia, December 1972.

Education Division (81-001, \$1 a year), Vol. 2, No. 2, Public Libraries in Canada 1970;

Aviation (51-004, \$3 a year), Vol. 5, No. 5, Civil Aviation, 3rd Quarter 1972.

Fruit and Vegetable Preservation (32-023, \$1 a year), Vol. 1, No. 25, Stocks of Canned Fruits and Vegetables held by Cannery, by Geographical Areas, November 1972; Vol. 1, No. 26, 1972 Pack of Fruits and Vegetables as reported up to the end of November 1972.

Construction Price Statistics (62-006, \$3 a year), Vol. 1, No. 9, Price Indexes of Highway Construction in Canada, 1971;

Fruit and Vegetable Preservation (32-023, \$1 a year), Vol. 1, No. 27, Pack of Processed Peaches, 1972; Vol. 1, No. 28, Pack of Processed Plums, 1972; Vol. 1, No. 29, Pack of Canned Tomatoes and Tomato Juice, 1972;

Fabricated Metal Products (41-009, \$2 a year), Factory Shipments of Trailers, 1971.