



IN·F·O·M·A·T

A WEEKLY REVIEW

Friday, July 13, 1990

OVERVIEW

■ Employment Up Marginally

In June, seasonally adjusted employment rose marginally from the previous month, contrasting with the larger fluctuations of the previous four months.

■ Wages and Salaries Continue to Increase

Seasonally adjusted, wages and salaries rose 0.6% in April, in line with the average monthly change noted in the first three months of the year.

■ Motor Vehicle Sales Decrease Again

Sales of new motor vehicles posted a decline of 1.2% in May, the second consecutive monthly decrease.

■ New Housing Prices Down Slightly

The New Housing Price Index (1986 = 100) decreased 0.3% to 145.6 in May, the second consecutive decrease after two months of slight growth.

■ Rising Trend in Farm Product Prices Maintained

The farm product price index was up 1.6% in May, continuing the rising trend evident since September.

■ Wheat Still Farmers' Choice

Canadian farmers seeded 34.7 million acres of all types of wheat this spring, up 3% from 1989, and the second largest planting on record.

Employment Up Marginally

In June, seasonally adjusted employment rose marginally from the previous month, contrasting with the larger fluctuations of the previous four months.

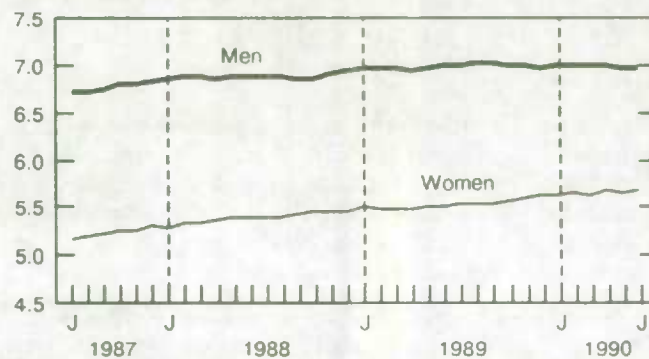
The rise in employment was attributable solely to women and affected mainly those 25 years and over. For the fourth month in a row, changes in employment have contributed to increase employment of women faster than employment for men.

Employment in manufacturing increased 1.1%, after a cumulative decrease of 6% since September 1989. Agriculture also showed an increase (1.6%) after four months of variations resulting in little change. Employment fell 3.7% in construction, contrasting with the marginal variations of the previous two months and larger than the

(continued on page 2)

Employment

Millions, seasonally adjusted



STATISTICS CANADA
STATISTIQUE CANADA

JUL 13 1990

LIBRARY
BIBLIOTHÈQUE



Statistics
Canada

Statistique
Canada

Canada

... Employment Up Marginally

cumulative increase since December. Transportation, communication and other utilities also posted a decline (-1.6%) that offset the increases of the previous two months. There was little or no change noted in other industries.

The unemployment rate edged down to 7.5 in June from 7.6 in May, in line with the average of the last twelve months.

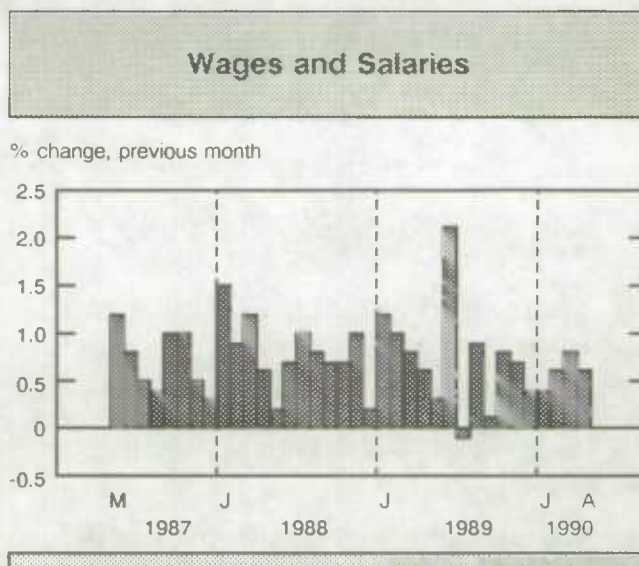
For further information, order *Labour Force Information* (71-001P) or call *Household Surveys Division* at (613) 951-2301.

Wages and Salaries Continue to Increase

Seasonally adjusted, wages and salaries rose 0.6% in April, in line with the average monthly change noted in the first three months of the year.

Wages and salaries in manufacturing rose 0.7%, an increase above the average of the previous three months. The situation was similar in health and welfare services, where growth in wages has been accelerating for three months. In finance, real estate and insurance, the rise in wages and salaries (0.8%) followed a decline and two smaller increases. The rise noted in mines, quarries and oil wells (1.5%) offset the declines of the previous two months. Forestry posted a second consecutive increase (1.5%) that was in contrast to the cumulative decline of 3% in the previous three months.

For further information, order *Estimates of Labour Income* (catalogue number 72-005) or contact *Labour Division* at (613) 951-4051.



Motor Vehicle Sales Decrease Again

Seasonally adjusted, sales of new motor vehicles posted a decline of 1.2% in May, following a decline of 7.2% in April. Although sales of new motor vehicles have posted large fluctuations, the trend, as measured by a four-month moving average, has generally decreased since late 1988.

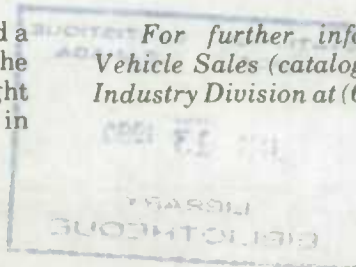
Sales of passenger cars and sales of trucks both posted a second consecutive decline. In the last four months, trucks have been generally decreasing at a faster rate than sales of passenger cars.

Sales of North American passenger cars posted a decline of 1.5%, moderating somewhat from the decrease of 7.1% in April. There was also a slight drop in sales of imported passenger cars, the third in four months.

Motor Vehicle Sales

	Jan.	Feb.	Mar.	Apr.	May.
% change, previous month					
Passenger cars	3.3	-6.8	3.3	-6.4	-1.2
North American	-0.6	8.0	4.1	-7.1	-1.5
Imported	12.0	-4.6	1.9	-4.9	-0.5
Commercial vehicles	17.5	-16.4	9.8	-8.8	-1.3
Total	7.9	-10.2	5.5	-7.2	-1.2

For further information, order *New Motor Vehicle Sales* (catalogue number 63-007) or contact *Industry Division* at (613) 951-3552.



New Housing Prices Down Slightly

The New Housing Price Index (1986 = 100) decreased 0.3% to 145.6 in May, the second consecutive decrease two after months of slight growth. Decreases in British Columbia had the greatest impact on the decline of the index for Canada.

In Victoria, the index declined 2.9%, the first decrease since May 1989. In Vancouver, the index decreased 1.3%, the third consecutive decline. The

index also decreased in Kitchener-Waterloo (-1.0%), after a month of no change, and in Toronto (-0.3%). This was a fifth consecutive decline of the index for Toronto after six months of weak growth.

The Canada Index was up 3.5% on a year-over-year basis. This represents a markedly slower rate of increase than the rate for the same period last year (14.6%).

For further information, order Construction Price Statistics (catalogue 62-007) or contact Prices Division at (613) 951-9607.

Rising Trend in Farm Product Prices Maintained

In May, the farm product price index (1986=100) stood at 108.9, up 1.6% over the previous month, and continuing the pattern of growth evident since September. However, the index remained 3.4% below the year-earlier level.

The crops component rose 0.5%, as prices for cereals and oilseeds were up. Cereals, up 0.7%, continued a moderate rising trend. Oilseeds also rose 0.7%, maintaining a rising trend evident since November. Potato prices declined (-2.5%), the second consecutive decrease.

The livestock and animal products component increased 2.3% in May, extending the generally rising trend evident throughout 1989. The increase was mainly attributable to hog prices which have been rising since January due to strong consumer demand and high futures prices. The cattle index decreased 0.2%, continuing a pattern of small fluctuations during the last twelve months.

For further information, order Farm Product Price Index (catalogue number 62-003) or contact Agriculture Division at (613) 951-2446.

Wheat Still Farmers' Choice

Canadian farmers seeded 34.7 million acres of all types of wheat this spring, up 3% from 1989, and the second largest planting on record.

Western Canada experienced widespread drought during 1988 and 1989. However, this spring, soil moisture conditions were better and there were few agronomic restrictions to farmers' planting decisions. Therefore, relative price expectations played a larger role in farmers' decisions than in the previous years.

The area seeded with oilseeds decreased 6% from 1989 to 9.5 million acres. The area seeded with canola, the major Canadian oilseed, fell 11% to its lowest level since 1983. (However, it was 9% above the area farmers intended to sow when they were surveyed in March.)

The seeded area for oats fell 13%, barley fell 2%, while the area seeded with corn for grain rose 4% over 1989.

The area of specialty crops in Western Canada was 9% above last year, at 1.8 million acres. This continues the trend of diversification into specialty crops which began five years ago. The seeded area of lentils, mustard seed and sunflower seeds have increased while the areas of dry peas and canary seeds have decreased.

Seeding conditions in the spring of 1990 were quite different from those of the past two years. Cool weather and frequent precipitation slowed seeding operations in many parts of the country. Despite these conditions, at the time the survey was conducted in early June, about 90% of the crop was seeded, comparable to last year's level.

For further information, order Field Crop Reporting Series - No 4 (catalogue number 22-002) or contact Agriculture Division at (613) 951-8717.

PUBLICATIONS RELEASED FROM JULY 6 TO 12

AGRICULTURE

Grain Trade of Canada, 1988-89. Catalogue number 22-201 (Canada: \$39; United States: US\$47; Other Countries: US\$55).

Survey of Canadian Nursery Trades Industry, 1988 and 1989. Catalogue number 22-203 (Canada: \$22; United States: US\$26; Other Countries: US\$31).

BALANCE OF PAYMENTS

Security Transactions with Non-residents, April 1990. Catalogue number 67-002 (Canada: \$15.80/\$158; United States: US\$19/US\$190; Other Countries: US\$22.10/US\$221).

INDUSTRY

Asphalt Roofing, May 1990. Catalogue number 45-001 (Canada: \$5/\$50; United States: US\$6/US\$60; Other Countries: US\$7/US\$70).

Cement, May 1990. Catalogue number 44-001 (Canada: \$5/\$50; United States: US\$6/US\$60; Other Countries: US\$7/US\$70).

Coal and Coke Statistics, April 1990. Catalogue number 45-002 (Canada: \$10/\$100; United States: US\$12/US\$120; Other Countries: US\$14/US\$140).

Department Store Monthly Sales, Including Concessions, by Province and Metropolitan Area, April 1990. Catalogue number 63-004 (Canada: \$2.70/\$27; United States: US\$3.20/US\$32; Other Countries: US\$3.80/US\$38).

Department Store Sales and Stocks, August 1989. Catalogue number 63-002 (Canada: \$14.40/\$144; United States: US\$17.30/US\$173; Other Countries: US\$20.20/US\$202).

Department Store Sales and Stocks, September 1989. Catalogue number 63-002 (Canada: \$14.40/\$144; United States: US\$17.30/US\$173; Other Countries: US\$20.20/US\$202).

Factory Sales of Electric Storage Batteries, May 1990. Catalogue number 43-005 (Canada: \$5/\$50; United States: US\$6/US\$60; Other Countries: US\$7/US\$70).

Gypsum Products, May 1990. Catalogue number 44-003 (Canada: \$5/\$50; United States: US\$6/US\$60; Other Countries: US\$7/US\$70).

Industrial Chemicals and Synthetic Resins, May 1990. Catalogue number 46-002 (Canada: \$5.60/\$56; United States: US\$6.70/US\$67; Other Countries: US\$7.80/US\$78).

Specified Domestic Electrical Appliances, May 1990. Catalogue number 43-003 (Canada: \$5/\$50; United States: US\$6/US\$60; Other Countries: US\$7/US\$70).

INVESTMENT AND CAPITAL STOCK

Building Permits, April 1990. Catalogue number 64-001 (Canada: \$22.20/\$221; United States: US\$26.50/US\$265; Other Countries: US\$30.90/US\$309).

Construction in Canada, 1988-1990. Catalogue number 64-201 (Canada: \$39; United States: US\$47; Other Countries: US\$55).

JUSTICE

Juristat - The Future of Crime Statistics from the UCR Survey, Vol. 10, No. 10. Catalogue number 85-002 (Canada: \$3.90/\$78; United States: US\$4.70/US\$94; Other Countries: US\$5.45/US\$109).

LABOUR

Labour Force Information, For the week ended June 16, 1990. Catalogue number 71-001P (Canada: \$6.30/\$63; United States: US\$7.60/US\$76; Other Countries: US\$8.80/US\$88).

Unemployment Insurance Statistics Annual Supplement to 73-001, 1990. Catalogue number 73-202S (Canada: \$38; United States: US\$46; Other Countries: US\$53).

Unemployment Insurance Statistics, April 1990. Catalogue number 73-001 (Canada: \$14.70/\$147; United States: US\$17.60/US\$176; Other Countries: US\$20.60/US\$206).

PRICES

Consumer Prices and Price Indexes, January-March 1990. Catalogue number 62-010 (Canada: \$18/\$72; United States: US\$21.50/US\$86; Other Countries: US\$25.25/US\$101).

Industry Price Indexes, April 1990. Catalogue number 62-011 (Canada: \$18.20/\$182; United States: US\$21.80/US\$218; Other Countries: US\$25.50/US\$255).

SERVICES

Electric Power Statistics, April 1990. Catalogue number 57-001 (Canada: \$10/\$100; United States: US\$12/US\$120; Other Countries: US\$14/US\$140).

Gas Utilities, March 1990. Catalogue number 55-002 (Canada: \$12.70/\$127; United States: US\$15.20/US\$152; Other Countries: US\$17.80/US\$178).

Telephone Statistics, 1988. Catalogue number 56-203 (Canada: \$36; United States: US\$43; Other Countries: US\$50).

TRANSPORTATION

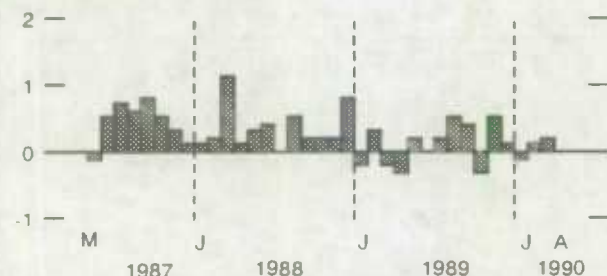
Railway Carloadings, May 1990. Catalogue number 52-001 (Canada: \$8.30/\$83; United States: US\$10/US\$100; Other Countries: US\$11.60/US\$116).

Railway Operating Statistics, February 1990. Catalogue number 52-003 (Canada: \$10.50/\$105; United States: US\$12.60/US\$126; Other Countries: US\$14.70/US\$147).

CURRENT TRENDS*

Gross Domestic Product

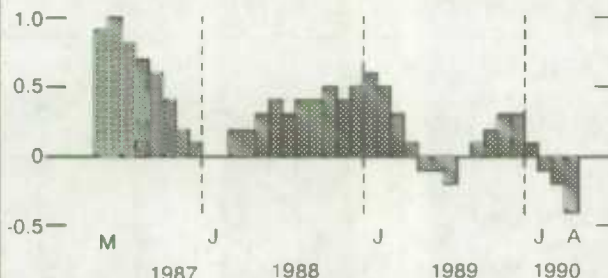
% change, previous month



Real Gross Domestic Product was unchanged in April, following gains of 0.2% in March and 0.1% in February.

Composite Leading Indicator

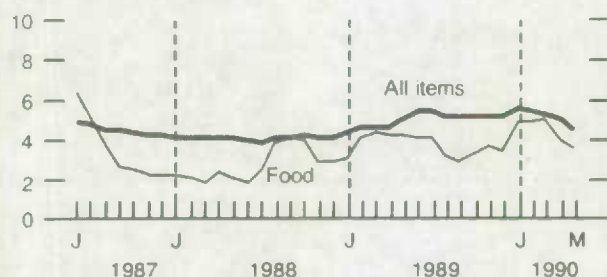
% change, previous month



The composite leading index fell by 0.4% in April, after drops of 0.1% in February and 0.2% in March.

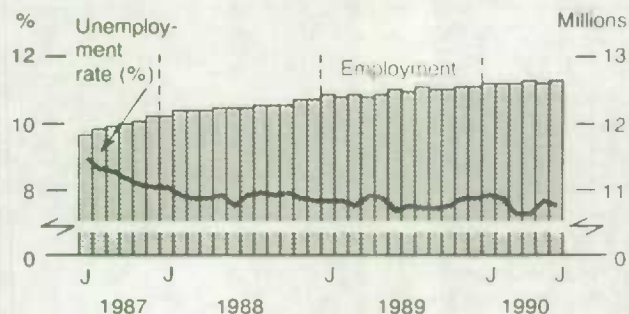
Consumer Price Index

% change, previous year



The year-over-year increase in the consumer price index was 4.5% in May.

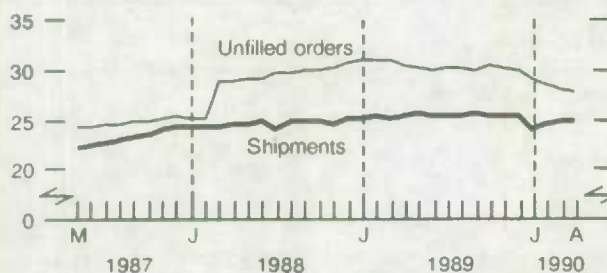
Unemployment Rate and Employment



In June, seasonally adjusted employment rose marginally from the previous month.

Manufacturing

Billions of dollars



Manufacturers' shipments decreased 0.7% in April after two consecutive increases.

Merchandise Trade

Billions of dollars, short-term trend



Exports were down in April, after three consecutive increases.

* All series are seasonally adjusted except the consumer price index.



1010047758

TEST MONTHLY STATISTICS

	Period	Level	Change Previous Period	Change Previous Year
GENERAL				
Gross Domestic Product (\$ billion, 1981)	April	416	0.0%	1.6%
Composite Leading Indicator (1981 = 100)	April	144.9	-0.4%	-0.1%
Profits of Industrial Corporations (\$ billion)	1st Q	6.2	-1.5%	-51.6%
DOMESTIC DEMAND				
Retail Trade (\$ billion)	April	16.3	-1.0%	1.9%
New Motor Vehicle Sales ('000 units)	May	109	-1.2%	-15.4%
LABOUR				
Employment (millions)	June*	12.6	0.1%	0.9%
Unemployment Rate (%)	June*	7.5	-0.1	0.2
Participation Rate (%)	June*	66.8	-0.1	-0.2
Labour Income (\$ billion)	April*	31.6	0.8%	8.8%
Average Weekly Earnings (\$)	April	506.02	0.6%	5.2%
INTERNATIONAL TRADE				
Merchandise Exports (\$ billion)	April	11.6	-5.9%	0.0%
Merchandise Imports (\$ billion)	April	11.5	2.1%	1.3%
Merchandise Trade Balance (\$ billion)	April	0.1	-1.0	0.0
MANUFACTURING				
Shipments (\$ billion)	April	24.6	-0.7%	-2.85%
New Orders (\$ billion)	April	24.3	0.8%	-2.44%
Unfilled Orders (\$ billion)	April	27.7	-1.1%	-9.16%
Inventory/ Shipments Ratio	April	1.55	0.0	-0.22
Capacity Utilization (%)	1st Q	80.4	-1.6	-4.1
PRICES				
Consumer Price Index (1981 = 100)	May	157.2	0.5%	4.5%
Industrial Product Price Index (1981 = 100)	May	131.8	0.3%	0.3%
Raw Materials Price Index (1981 = 100)	May	99.6	-2.0%	-3.5%
New Housing Price Index (1981 = 100)	May*	145.6	-0.3%	3.5%

Note: All series are seasonally adjusted with the exception of average weekly earnings and the price indexes.

* New this week.

I·N·F·O·M·A·T

A Weekly Review

Published by the Communications Division
Statistics Canada.

Senior Editor: Greg Thomson (613) 951-1116
Editor: Yves Saint-Pierre (613) 951-1197

R.H. Coats Building, Tunney's Pasture, Ottawa, Ontario K1A 0T6.

Catalogue: 11-002E. Price: Canada: \$2.50 per issue, \$125.00 per year; United States: US\$3.00 per issue, US\$150.00 per year; Other Countries: US\$3.50 per issue, US\$175.00. To subscribe: send money order or cheque payable to the Receiver General for Canada/Publication Sales, Statistics Canada, Ottawa, Ontario K1A 0T6. To order by telephone dial: 1-800-267-6677 within Canada or 613-951-7277 from all other countries.

Published under the authority of the Minister of Industry, Science and Technology. All rights reserved. No part of this publication may be reproduced, stored in a retrieval system or transmitted in any form or by any means, electronic, mechanical, photocopying, recording or otherwise without prior written permission of the Minister of Supply and Services Canada.