



IN·F·O·M·A·T

A WEEKLY REVIEW

Friday, August 17, 1990

OVERVIEW

■ Unemployment Rises

In July, the labour force grew by 61,000 (0.4%). Most of the increase (46,000) was translated into higher numbers of unemployed.

■ New Motor Vehicle Sales Increase Sharply

In June, seasonally adjusted, sales of new motor vehicles increased a sharp 6.1%. However, this was not enough to offset the cumulative impact of three declines in the previous four months.

■ Number of Foreign Visitors Edges Up

In June, the seasonally adjusted number of foreign travellers on trips of one or more nights duration to Canada edged up slightly after declines in the previous two months.

■ Hog Prices Boost Farm Product Price Index

In June, the Farm Product Price Index (FPPI, 1986 = 100) rose by 1%. This was the fifth consecutive monthly increase for the FPPI.

This issue also includes information on disabled senior Canadians.

STATISTICS CANADA STATISTIQUE CANADA

AUG 17 1990

LIBRARY
BIBLIOTHÈQUE

Unemployment Rises

In July, the labour force grew by 61,000 (0.4%). Most of the increase (46,000) was translated into higher numbers of unemployed.

Most of the growth in unemployment occurred in Ontario (50,000). Throughout Canada, it affected men and women equally, but was concentrated among young people.

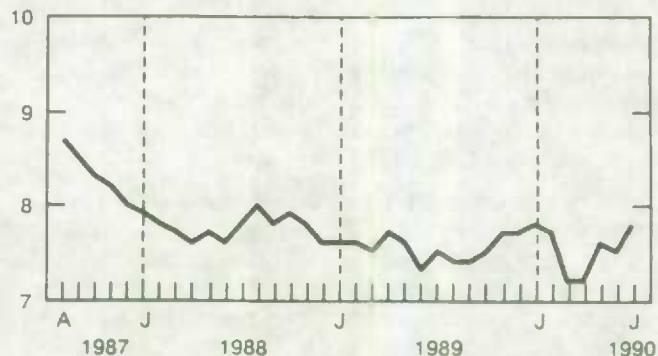
The unemployment rate rose to 7.8%, its highest level since the beginning of the year and 0.6 of a percentage point above its March low. It stood at 12.7% for young people, a rise of more than one percentage point from the average of the previous twelve months.

The unemployment rate rose 0.9 point to 6.5% in Ontario. Other notable increases occurred in Prince Edward Island (0.8 point) and Alberta (0.5 point).

(continued on page 2)

Unemployment Rate

Percent, seasonally adjusted



... Unemployment Rate Rises

Employment was virtually unchanged: a drop of 25,000 in the 15-24 age group was more than offset by a rise of 40,000 for those aged 25 and over. Employment grew fastest in Newfoundland (2%), Nova Scotia (1.5%) and British Columbia (1%) and declined only in Ontario (-0.3%) and Saskatchewan (-0.4%).

From May to September, the Labour Force Survey collects data on students. In July, the number of returning students employed or looking

for a job declined 3.6% from the previous year. Employment among returning students fell 5.4%. The unemployment rate for returning students increased from 6.8% to 11.2% in Ontario, declined from 15.5% to 9.8% in Nova Scotia, and dropped from 16.8% to 11.5% in British Columbia. There were smaller changes in other provinces.

For further information, order *The Labour Force* (catalogue number 71-001) or contact Household Surveys Division at (613) 951-2301.

New Motor Vehicle Sales Increase Sharply

In June, seasonally adjusted sales of new motor vehicles increased a sharp 6.1%. However, this was not enough to offset the cumulative impact of three declines in the previous four months.

The increase in sales of passenger cars (8.4%) was the main contributor to higher motor vehicle sales. This increase offset declines in April and May. Sales of North American passenger cars increased 7.5%, while sales of imported cars rose 10.2%. From January to June, the share of imported cars in total passenger car sales increased from 33.4% to 35.2%.

Sales of commercial vehicles rose slightly (1.5%), more than offsetting the decline in May. In May and June, fluctuations in sales, which were wide at the beginning of the year, seemed to stabilize.

Motor Vehicle Sales

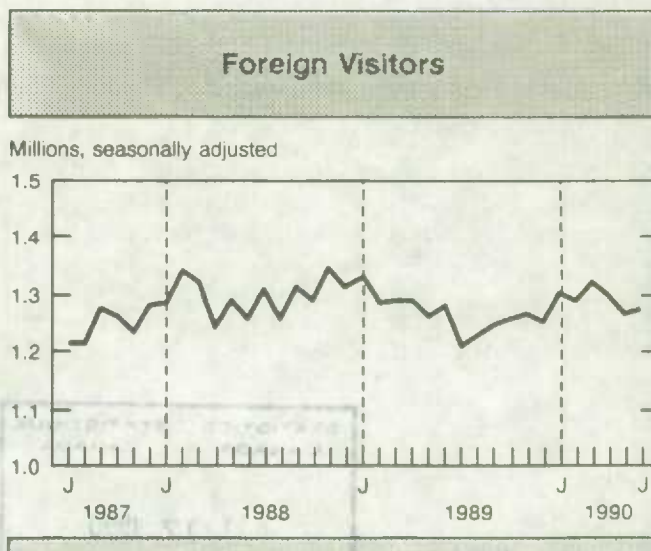
	Jan.	Feb.	Mar.	Apr.	May	June
	% change, previous month					
Passenger cars	3.3	-6.8	3.8	-6.0	-0.8	8.4
North American	-0.6	8.0	4.4	-6.8	-1.1	7.5
Imported	12.0	-4.6	2.6	-4.6	-0.2	10.2
Commercial vehicles	17.5	-16.4	9.7	-9.0	-1.3	1.5
Total	7.9	-10.2	5.7	-7.0	-1.0	6.1

For further information, order *New Motor Vehicle Sales* (catalogue number 63-007) or contact Industry Division at (613) 951-3552.

Number of Foreign Visitors Edges Up

In June, the seasonally adjusted number of foreign travellers on trips of one or more nights duration to Canada edged up slightly after declines in the previous two months. Both travellers from the United States and travellers from other countries contributed to this slight increase.

The number of Canadians taking overnight trips out of the country decreased slightly following an increase of 1.5% in May. This was the result of a decrease in overnight trips to the United States, which was not offset by an increase in trips to other countries.



(continued on page 3)

... Number of Foreign Travellers Edges Up

Same-day trips by Canadians to the United States increased a further 0.5% after rising 6.5% in May. These increases more than offset the declines of the previous three months. Same-day trips to Canada by residents of the United States increased

slightly, offsetting the decline of the previous month. However, these trips have been following a generally decreasing trend since 1986.

For further information, order International Travel - Advance Information (catalogue 66-001P) or contact Education, Culture and Tourism Division at (613) 951-8933.

Hog Prices Boost Farm Product Price Index

In June, the Farm Product Price Index rose by 1%. This was the fifth consecutive increase of the FPPI, which has been rising faster since January than in the corresponding period last year.

The livestock and animal products index increased 1.9%, continuing a generally rising trend evident since early 1989. The increase was largely the result of the continuing rise in hog prices (8.0%), attributable to strong consumer demand. The cattle index continued to fluctuate within a narrow range, rising 1.1%. Poultry prices rose 0.8%, continuing a

series of minor fluctuations that began in January 1989. Egg prices also increased 0.8%, after following a generally decreasing trend since January.

The crops index declined 0.3%. An 0.4% increase in cereal prices was more than offset by a 3.7% decline in oilseed prices, the first decline of the oilseed index since October 1989. The cereal index rose for the fourth consecutive month, but was still 19.1% lower than in June of last year, when it reached a four-year high due to the drought.

For further information, order Farm Product Price Index (catalogue number 62-003) or contact Agriculture Division at (613) 951-2436.

NEW FROM STATISTICS CANADA

Barriers confronting seniors with disabilities in Canada
Special topic series
The health and activity limitation survey



Barriers Confronting Seniors with Disabilities in Canada

Barriers Confronting Seniors with Disabilities in Canada, the first of nine special-topic reports on disability in Canada, is now available. This report, part of the Health and Activity Limitation Survey, concerns disabled Canadians aged 65 and over. It provides general information on disability, aids required and used, community services and supports, income, expenditures and lifestyle. The following are some of the highlights of the survey:

- Approximately 46% of Canadians aged 65 and over (about 1.2 million people) have some form of disability. This is more than three times the average rate for all ages. Of these 1.2 million disabled seniors, 81% have difficulty with mobility or agility; 84% live in households and 16% live in institutions.
- In 1986 the income of seniors was modest. Approximately 60% of seniors with disabilities and 51% of seniors without disabilities had incomes of less than \$10,000. Disabled senior females had the lowest income levels.
- An estimated 8% of disabled individuals in households require mobility aids but do not have them. Needs are also unmet for 31% of seniors who require hearing devices and for 10% who require visual aids. With all of these aids, the main barrier for seniors is cost. Approximately 27% of disabled seniors in households require housing adaptations to move around their homes but do not have them.

- Approximately 41% of disabled seniors are involved in some level of physical exercise. However, 23% have difficulty getting exercise because of the location and costs of suitable programs or facilities or a lack of adequate transportation arrangements.

For further information, order Barriers Confronting Seniors with Disabilities (catalogue number 82-615) or contact Post-Censal Surveys Program at (613) 951-0025.

PUBLICATIONS RELEASED FROM AUGUST 10 TO 16

AGRICULTURE

Cereals and Oilseeds Review, May 1990. Catalogue number 22-007 (Canada: \$13.80/\$138.00; United States: US\$16.60/US\$166.00; Other Countries: US\$19.30/US\$193.00).

EDUCATION, CULTURE AND TOURISM

Elementary and Secondary School Enrolment, 1988-1989. Catalogue number 81-210 (Canada: \$26.00; United States: US\$31.00; Other Countries: US\$36.00).

Touriscope - International Travel, June 1990. Catalogue number 66-001P (Canada: \$6.10/\$61.00; United States: US\$7.30/US\$73.00; Other Countries: US\$8.50/US\$85.00).

HEALTH

Barriers Confronting Seniors with Disabilities in Canada, August 1990. Catalogue number 82-615 (Canada: \$35.00; United States: US\$42.00; Other Countries: US\$49.00).

HOUSEHOLD SURVEYS

Labour Force Information, July, 1990. Catalogue number 71-001P (Canada: \$6.30/\$63.00; United States: US\$7.60/US\$76.00; Other Countries: US\$8.80/US\$88.00).

INDUSTRY

Department Store Monthly Sales, including concessions, by Province and Metropolitan Area, May 1990. Catalogue number 63-004 (Canada: \$2.70/\$27.00; United States: US\$3.20/US\$32.00; Other Countries: US\$3.80/US\$38.00).

Factory Sales of Electric Storage Batteries, June 1990. Catalogue number 43-005 (Canada: \$5.00/\$50.00; United States: US\$6.00/US\$60.00; Other Countries: US\$7.00/US\$70.00).

Footwear Statistics, June 1990. Catalogue number 33-002 (Canada: \$5.00/\$50.00; United States: US\$6.00/US\$60.00; Other Countries: US\$7.00/US\$70.00).

Industrial Chemicals and Synthetic Resins, June 1990. Catalogue number 46-002 (Canada: \$5.60/\$56.00; United States: US\$6.70/US\$67.00; Other Countries: US\$7.80/US\$78.00).

Particleboard, Waferboard and Fibreboard, June 1990. Catalogue number 36-003 (Canada: \$5.00/\$50.00; United States: US\$6.00/US\$60.00; Other Countries: US\$7.00/US\$70.00).

INDUSTRY - Concluded

Pulpwood and Wood Residue Statistics, June 1990. Catalogue number 25-001 (Canada: \$6.10/\$61.00; United States: US\$7.30/US\$73.00; Other Countries: US\$8.50/US\$85.00).

Quarterly Report on Energy Supply-Demand in Canada, 1989-IV. Catalogue number 57-003 (Canada: \$31.75/\$127.00; United States: US\$38.00/US\$152.00; Other Countries: US\$44.50/US\$178.00).

INPUT-OUTPUT

System of National Accounts - Provincial Gross Domestic Product by Industry, 1984-1986. Catalogue number 15-203 (Canada: \$35.00; United States: \$42.00; Other Countries: \$49.00).

INTERNATIONAL TRADE

Exports by Commodity (H.S. Based), May 1990. Catalogue number 65-004 (Canada: \$55.10/\$551.00; United States: US\$66.10/US\$661.00; Other Countries: US\$77.10/US\$771.00).

SERVICES, SCIENCE AND TECHNOLOGY

Science Statistics Service Bulletin - Total Spending on Research and Development in Canada, 1990. Catalogue number 88-001 (Canada: \$7.10/\$71.00; United States: US\$8.50/US\$85.00; Other Countries: US\$9.90/US\$99.00).

TRANSPORTATION

Air Carrier Operations in Canada, January-March 1989. Catalogue number 51-002 (Canada: \$24.25/\$97.00; United States: US\$29.00/US\$116.00; Other Countries: US\$34.00/US\$136.00).

Aviation Statistics Centre Service Bulletin, May 1990. Catalogue number 51-004 (Canada: \$9.30/\$93.00; United States: US\$11.20/\$112.00; Other Countries: US\$13.00/US\$130.00).

Passenger Bus and Urban Transit Statistics, June 1990. Catalogue number 53-003 (Canada: \$7.10/\$71.00; United States: US\$8.50/US\$85.00; Other Countries: US\$9.90/US\$99.00).

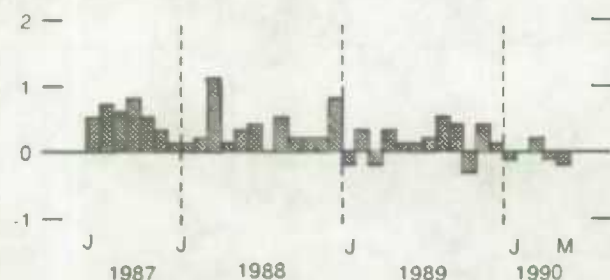
Railway Carloadings, June 1990. Catalogue number 52-001 (Canada: \$8.30/\$83.00; United States: US\$10.00/US\$100.00; Other Countries: US\$11.60/US\$116.00).

Railway Operating Statistics, April 1990. Catalogue number 52-003 (Canada: \$10.50/\$105.00; United States: US\$12.60/US\$126.00; Other Countries: US\$14.70/US\$147.00).

CURRENT TRENDS*

Gross Domestic Product

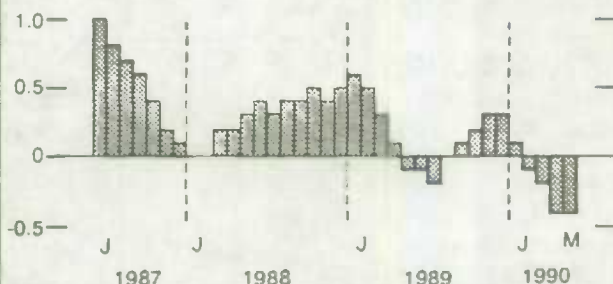
% change, previous month



Real Gross Domestic Product fell 0.2% in May, following a drop of 0.1% in April.

Composite Leading Indicator

% change, previous month



In May, the composite leading indicator fell by 0.4% as it had in April. Smaller drops were registered in March and in February.

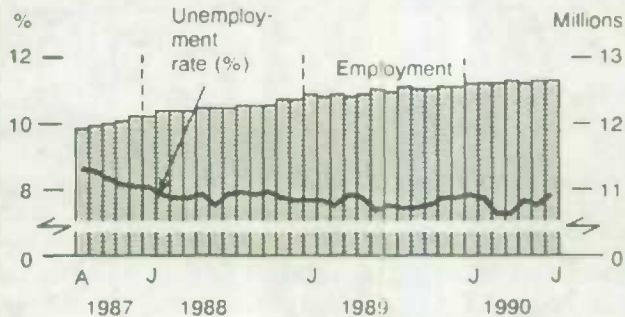
Consumer Price Index

% change, previous year



In June, the Consumer Price Index increased 4.3% on a yearly basis, continuing the deceleration started in January.

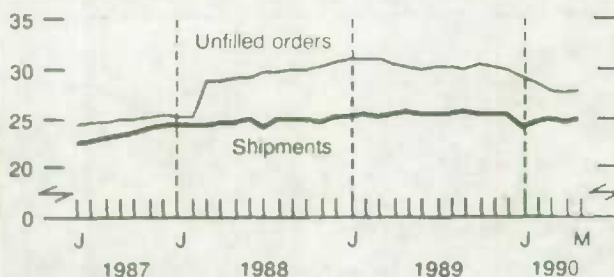
Unemployment Rate and Employment



In July, the labour force grew by 61,000. Three quarters of the increase was translated into higher numbers of unemployed.

Manufacturing

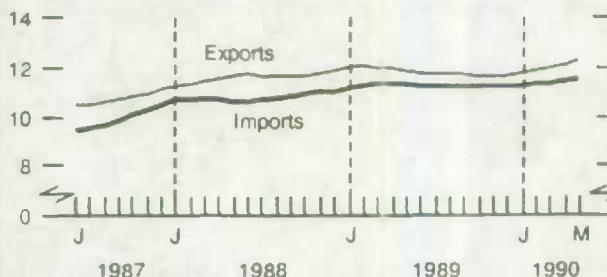
Billions of dollars



Manufacturers' shipments edged up slightly (0.1%) in May following a decline of 1% in April.

Merchandise Trade

Billions of dollars, short-term trend



In May, seasonally adjusted exports increased \$575 million over April.

* All series are seasonally adjusted except the consumer price index.



1010040924

BEST MONTHLY STATISTICS

	Period	Level	Change Previous Period	Change Previous Year
GENERAL				
Gross Domestic Product (\$ billion, 1981)	May	415	-0.2%	1.2%
Composite Leading Indicator (1981 = 100)	May	144.2	-0.4%	-0.5%
Profits of Industrial Corporations (\$ billion)	1st Q	6.2	-1.5%	-51.6%
DOMESTIC DEMAND				
Retail Trade (\$ billion)	May	16.1	-1.0%	-0.8%
New Motor Vehicle Sales ('000 units)	June*	117	6.1%	-3.9%
LABOUR				
Employment (millions)	July*	12.6	0.1%	1.2%
Unemployment Rate (%)	July*	7.8	0.3	0.3
Participation Rate (%)	July*	67.0	0.2	0.0
Labour Income (\$ billion)	May	31.9	1.1%	9.6%
Average Weekly Earnings (\$)	May	507.83	0.3%	5.3%
INTERNATIONAL TRADE				
Merchandise Exports (\$ billion)	May	12.4	4.8%	0.1%
Merchandise Imports (\$ billion)	May	11.5	-0.1%	-2.3%
Merchandise Trade Balance (\$ billion)	May	1.0	0.6	0.4
MANUFACTURING				
Shipments (\$ billion)	May	24.6	0.7%	-3.6%
New Orders (\$ billion)	May	24.6	1.2%	-2.0%
Unfilled Orders (\$ billion)	May	27.6	-0.1%	-8.3%
Inventory/ Shipments Ratio	May	1.54	-0.1	-0.04
Capacity Utilization (%)	1st Q	80.4	-1.6	-4.1
PRICES				
Consumer Price Index (1986 = 100)	June	119.2	0.4%	4.3%
Industrial Product Price Index (1981 = 100)	June	131.7	-0.1%	0.2%
Raw Materials Price Index (1981 = 100)	June	98.9	-0.7%	-3.6%
New Housing Price Index (1986 = 100)	June	143.6	-1.4%	1.4%

Note: All series are seasonally adjusted with the exception of average weekly earnings and the price indexes.

* New this week.

I·N·F·O·M·A·T

A Weekly Review

Published by the Communications Division
Statistics Canada.

Senior Editor: Greg Thomson (613) 951-1116
Editor: Yves Saint-Pierre (613) 951-1197

R.H. Coats Building, Tunney's Pasture, Ottawa, Ontario K1A 0T6.

Catalogue: 11-002E. Price: Canada: \$2.50 per issue, \$125.00 annually; United States: US\$3.00 per issue, US\$150.00 annually; Other Countries: US\$3.50 per issue, US\$175.00. To subscribe: send money order or cheque payable to the Receiver General for Canada/Publication Sales, Statistics Canada, Ottawa, Ontario K1A 0T6. To order by telephone dial: 1-800-267-6677 within Canada or 613-951-7277 from all other countries.

Published under the authority of the Minister of Industry, Science and Technology. All rights reserved. No part of this publication may be reproduced, stored in a retrieval system or transmitted in any form or by any means, electronic, mechanical, photocopying, recording or otherwise without prior written permission of the Minister of Supply and Services Canada.