



I·N·F·O·M·A·T

A WEEKLY REVIEW

Friday, December 14, 1990

OVERVIEW

■ New Motor Vehicle Sales: Lowest Level in Six Years

Sales of all new motor vehicles fell 5.4% in October, to 101,000 units, the lowest level since September 1984.

■ Employment Continues to Decline

Employment fell 0.5% to 12.5 million persons in November. This was the third decrease in the last four months, adding up to a cumulative decline of 1% since August.

■ Wages and Salaries Increase Moderately

In September, the seasonally adjusted estimate of wages and salaries rose by 0.3%.

■ New Housing Price Index Maintains Downward Trend

The New Housing Price Index for Canada fell 0.9% in October, the seventh consecutive decline.

■ Farmers' Costs Up Slightly

The Farm Input Price Index rose 0.4% in the third quarter, the fourth consecutive increase.

■ Farm Product Price Index Continues to Fall

The Farm Product Price Index fell by 0.5% in October, the fourth consecutive decline. The index for crops fell 2.5%, while the livestock and animal products index rose by 0.8%.

New Motor Vehicle Sales: Lowest Level in Six Years

Sales of all new motor vehicles fell 5.4% in October, the fourth consecutive monthly decrease. This continues the trend of generally declining sales observed since the beginning of 1989. At 101,000 units, sales were 22% lower than the average monthly total for 1988 and at their lowest level since September 1984.

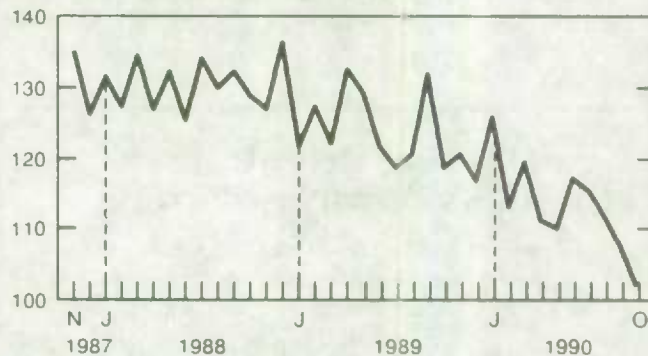
In October, truck sales decreased by 5.7% while passenger car sales posted a decline of 5.2%.

Sales of North American passenger cars decreased by 8.6%, the fourth consecutive monthly decrease. Sales of imported passenger cars increased by 1.7%, following a decline of 3.7% in September.

For further information, order *New Motor Vehicle Sales* (catalogue number 63-007) or contact Industry Division, at (613) 951-3552.

Sales of New Motor Vehicles

Seasonally adjusted, thousands of units



STATISTICS CANADA STATISTIQUE CANADA

DEC 14 1990

LIBRARY
BIBLIOTHÈQUE



Statistics
Canada

Statistique
Canada

Canada

Employment Continues to Decline

Employment fell 0.5% to 12.5 million persons in November. This was the third decrease in the last four months, adding up to a cumulative decline of 1% since August. Employment for men fell by 1% after staying unchanged in October. For women, employment rose slightly after declining in October.

The decline in employment continued to be focused in goods-producing industries, particularly in manufacturing where employment has fallen a

cumulative 9.8% since January 1989, and in construction, where employment declined for the fourth month in six, this time by 6.1%.

The number of unemployed jumped 3% to 1.25 million, the highest total since December 1985. This was the eighth increase in the last nine months, contributing to a cumulative rise of 27.8% since March.

The unemployment rate rose by 0.3 percentage points to 9.1%, a fifth consecutive monthly increase.

For further information, order *The Labour Force* (catalogue number 71-001) or contact Household Surveys Division at (613) 951-4720.

Wages and Salaries Increase Moderately

In September, the seasonally adjusted estimate of wages and salaries rose by 0.3%. The monthly changes in 1990 have ranged from 1.3% to -0.2%.

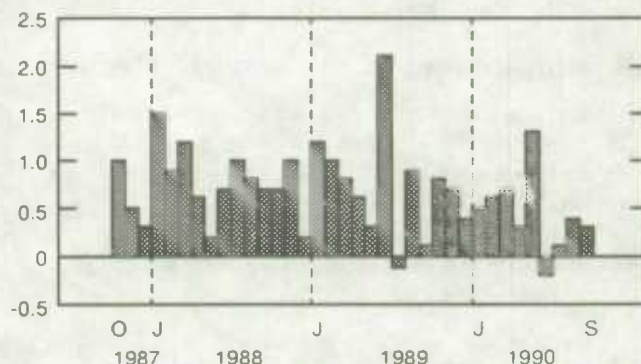
Wages and salaries in trade increased by 0.7%, a second notable increase in three months. The increase for finance, insurance and real estate (1.2%) was significantly higher than in the previous nine months. Wages and salaries also increased in provincial and local administration, and in commercial and personal services.

Wages and salaries in forestry declined for the third month in a row, this time by 0.8%. In manufacturing, wages and salaries fell by 0.4%, the sixth consecutive decline.

British Columbia posted a third straight monthly increase above 0.5%. The increase in Manitoba (0.7%) followed slight growth in August. In Quebec, wages and salaries grew by 0.5% after declining for the previous two months. A 0.5% increase in New Brunswick, together with the August increase, offset the sharp decrease in July. In the remaining provinces, the situation was little

Wages and Salaries

% change, previous month



changed from August, with the exception of Newfoundland, which recorded a decline of 0.7%, and the Yukon, Northwest Territories and abroad, where wages and salaries fell by 1.4%.

For further information, order *Estimates of Labour Income* (catalogue number 72-005) or contact Labour Division at (613) 951-4051.

New Housing Price Index Maintains Downward Trend

The New Housing Price Index for Canada fell 0.9% in October, the seventh consecutive decline, and stood 5.9% below its March record level.

The index for Toronto declined by 1.4%, contributing to a cumulative fall of 9.9% since the beginning of the year. In Vancouver, the index also dropped by 1.4%, posting a sixth drop in seven months. The index for Kitchener-Waterloo recorded the sharpest of six consecutive declines (1.5%).

The declines mentioned above were partly offset by increases posted in some cities. The index for

Quebec City rose by 0.2%. It has not posted any declines since the beginning of the survey in 1981. Edmonton recorded an increase of 0.2%, continuing a rise that is uninterrupted since early 1985. In Ottawa-Hull, new house prices rose 0.3% after declining since May.

For Canada, both the house only component and the land only component continued to fall. Since March, the house only component has declined by 8.1% whereas the land only has fallen by only 2.5% in the same period.

For further information, order *Construction Price Statistics* (catalogue number 62-007) or contact Prices Division at (613) 951-9607.

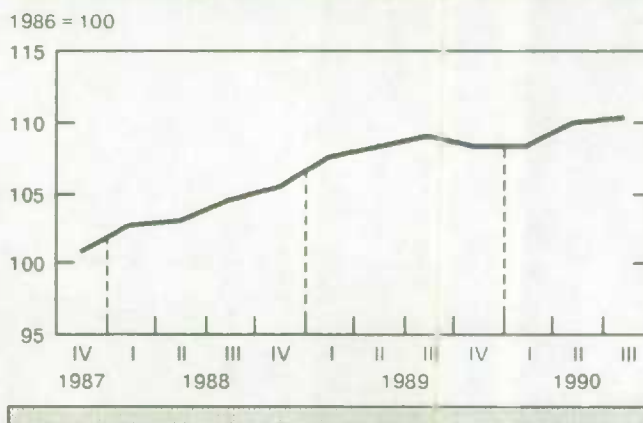
Farmers' Costs Up Slightly

The Farm Input Price Index rose 0.4% in the third quarter, the fourth consecutive increase. Four of the nine major groups rose in the third quarter.

The animal production index was up by 1%, mainly as a consequence of higher feed prices. The index for costs related to interest rose 1.6% compared to the previous quarter, contributing to a cumulative increase of 49.4% from the second quarter of 1987. The machinery and motor vehicles index declined by 0.6%, primarily as a result of declining prices for motor vehicle replacement. The crop production index decreased marginally after increasing sharply in the second quarter. The drop reflected small declines in fertilizer and pesticide prices.

For further information, order *Farm Input Price Index* (catalogue number 62-004) or contact Prices Division at (613) 951-9607.

Farm Input Price Index



Farm Product Price Index Continues to Fall

The Farm Product Price Index fell by 0.5% in October, the fourth consecutive decline.

The crops index declined by 2.5% and the decline affected all of its components. The cereals component decreased by 2.6%, mainly due to lower prices for wheat and barley. It was at its lowest level since October 1987, and stood 35% below its level of October 1988. The oilseeds component fell 1.0% as a result of lower prices for soybeans and canola. The component for potatoes decreased 16.7%.

The livestock and animal products index increased 0.8% as a result of increases in hog and cattle prices. The hogs component rose 1.6%, following three monthly declines. The component for cattle and calves increased 1.2%, after declining sharply in September.

Farm Product Price Index



For further information, order *Farm Product Price Index* (catalogue number 62-003) or contact Agriculture Division at (613) 951-2436.

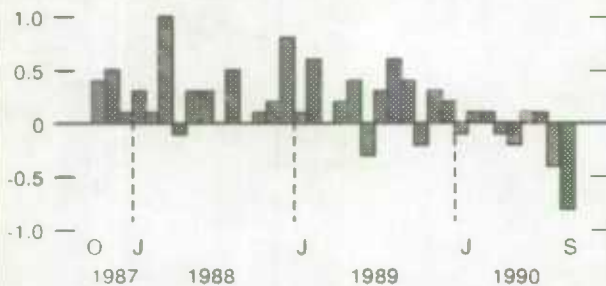
PUBLICATIONS RELEASED FROM DECEMBER 7 TO 12, 1990

Division/Publication title	Period	Catalogue Number	Price: Issue/Subscription		
			Canada (\$Cdn.)	United States	Other Countries
				\$US	
AGRICULTURE					
Farm Cash Receipts	January-September 1990	21-001	11/44	13.25/53	15.50/62
EDUCATION, CULTURE AND TOURISM					
Touriscope: International Travel, National and Provincial Counts	July-September 1990	66-001	38.50/154	46.25/185	54/216
HOUSEHOLD SURVEYS					
Labour Force Information	November 1990	71-001P	6.30/63	7.60/76	8.80/88
INDUSTRY					
New Motor Vehicle Sales	December 1989	63-007	14.40/144	17.30/173	20.20/202
Non-Metal Mines	1988	26-224	22	26	31
Restaurant, Caterer and Tavern Statistics	June 1990	63-011	6.10/61	7.30/73	8.50/85
Specified Domestic Electrical Appliances	October 1990	43-003	5/50	6/60	7/70
Wholesale Trade	September 1990	63-008	14.40/144	17.30/173	20.20/202
INDUSTRY MEASURES AND ANALYSIS					
Gross Domestic Product by Industry	September 1990	15-001	12.70/127	15.20/152	17.80/178
INTEGRATION AND WEALTH ACCOUNTS					
Financial Flow Accounts (Preliminary Data)	Third Quarter 1990	13-014	12.50/50	15/60	17.50/70
LABOUR					
Quarterly Estimates of Trusteed Pension Funds	Second Quarter 1990	74-001	11/44	13.25/53	15.50/62
Unemployment Insurance Statistics	September 1990	73-001	14.70/147	17.60/176	20.60/206
TRANSPORTATION					
Air Carrier Traffic at Canadian Airports	April-June 1988 and 1989	51-005	30.50/122	36.50/146.50	42.75/171
Air Passenger Origin and Destination, Domestic Report	1989	51-204	38	46	53

CURRENT TRENDS*

Gross Domestic Product

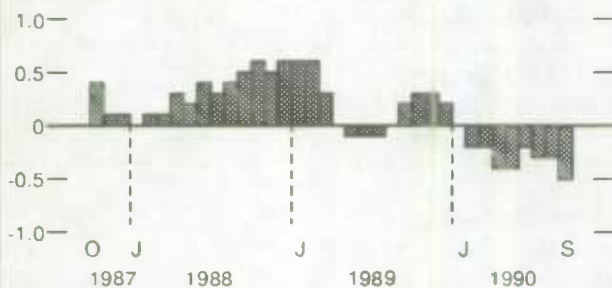
% change, previous month



Gross Domestic Product at factor cost by industry, at 1986 prices tumbled 0.8% in September after sliding 0.4% in August.

Composite Leading Indicator

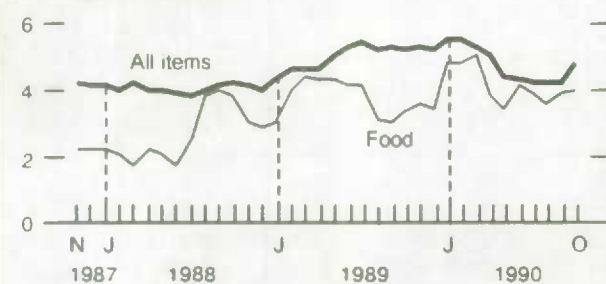
% change, previous month



In September, the composite leading indicator fell by 0.5%, the eighth consecutive drop.

Consumer Price Index

% change, previous year



In October, the Consumer Price Index increased 4.8% year-over-year.

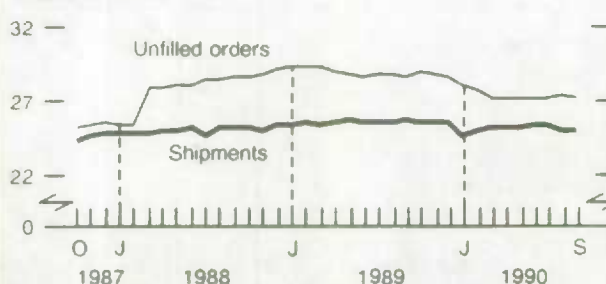
Unemployment Rate and Employment



Employment fell 0.5% in November, contributing to a cumulative drop of 1% since August. The unemployment rate was at 9.1%

Manufacturing

Billions of dollars



Shipments and orders decreased in September in response to strikes and weakness in the demand for manufactured products.

Merchandise Trade

Billions of dollars



Exports increased by 3.6% in September. Imports fell for a second straight month.

*All series are seasonally adjusted except the consumer price index.



1010059592

LATEST MONTHLY STATISTICS

	Period	Level	Change Previous Period	Change Previous Year
GENERAL				
Gross Domestic Product (\$ billion, 1986)	September	506	-0.7%	-0.8%
Composite Leading Indicator (1981 = 100)	September	142.4	-0.5%	-1.7%
Profits of Industrial Corporations (\$ billion)	3rd Q	5.2	13.6%	-29.5%
DOMESTIC DEMAND				
Retail Trade (\$ billion)	August	16.3	-0.2%	0.3%
New Motor Vehicle Sales ('000 units)	October*	101	-5.4%	-14.4%
LABOUR				
Employment (millions)	November*	12.5	-0.5%	-0.5%
Unemployment Rate (%)	November*	9.1	0.3	1.4
Participation Rate (%)	November*	66.9	-0.2	-0.3
Labour Income (\$ billion)	September*	32.1	0.3%	6.8%
Average Weekly Earnings (\$)	September*	521.74	0.6%	5.3%
INTERNATIONAL TRADE				
Merchandise Exports (\$ billion)	September	12.2	3.6%	4.0%
Merchandise Imports (\$ billion)	September	10.8	-2.1%	-4.0%
Merchandise Trade Balance (\$ billion)	September	1.5	0.8	0.9
MANUFACTURING				
Shipments (\$ billion)	September	24.3	-0.8%	-4.9%
New Orders (\$ billion)	September	24.2	-1.6%	-5.0%
Unfilled Orders (\$ billion)	September	27.7	-0.6%	-7.4%
Inventory/ Shipments Ratio	September	1.53	0.02	0.03
Capacity Utilization (%)	2nd Q	79.7	-0.5	-5.3
PRICES				
Consumer Price Index (1986 = 100)	October	121.2	0.8%	4.8%
Industrial Product Price Index (1986 = 100)	October	110.3	0.3%	1.2%
Raw Materials Price Index (1986 = 100)	October	127.6	7.7%	19.7%
New Housing Price Index (1986 = 100)	October*	138.1	-0.9%	-3.8%

Note: All series are seasonally adjusted with the exception of average weekly earnings and the price indexes.

* New this week.

I·N·F·O·M·A·T

A Weekly Review

Published by the Communications Division
Statistics Canada.

Senior Editor: Greg Thomson (613) 951-1116
Editor: Yves Saint-Pierre (613) 951-1197

R.H. Coats Building, Tunney's Pasture, Ottawa, Ontario K1A 0T6.

Catalogue: 11-002E. Price: Canada: \$2.50 per issue, \$125.00 per year; United States: US\$3.00 per issue, US\$150.00 per year; Other Countries: US\$3.50 per issue, US\$175.00. To subscribe: send money order or cheque payable to the Receiver General for Canada/Publication Sales, Statistics Canada, Ottawa, Ontario K1A 0T6. To order by telephone dial: 1-800-267-6677 within Canada or 613-951-7277 from all other countries.

Published under the authority of the Minister of Industry, Science and Technology. All rights reserved. No part of this publication may be reproduced, stored in a retrieval system or transmitted in any form or by any means, electronic, mechanical, photocopying, recording or otherwise without prior written permission of the Minister of Supply and Services Canada.