



IN·F·O·M·A·T

A WEEKLY REVIEW

Friday, February 15, 1991

OVERVIEW

■ Employment Drops Sharply

In January, employment declined by 0.7% (90,000 persons), the sharpest monthly drop since 1982.

■ New Motor Vehicle Sales Fall Further

Sales of new motor vehicles decreased by 3.5% in December, continuing the generally declining trend observed since the beginning of 1989.

■ New Housing Price Index Maintains Downward Trend

The New Housing Price Index fell 0.3% in December, continuing the declining trend started in the spring of 1990.

■ Farm Product Price Index Continues to Decline

In December, the Farm Product Price Index dropped by 0.6%, the fifth decline in six months.

■ Farm Input Price Index Edges Up

The Farm Input Price Index rose by 0.3% in the fourth quarter, less than the previous two quarterly increases.

■ Number of Visitors to Canada Unchanged

In December, the volume of foreign travel on trips of one or more nights to Canada remained almost stationary. A very modest upward trend seems to have emerged in recent months.

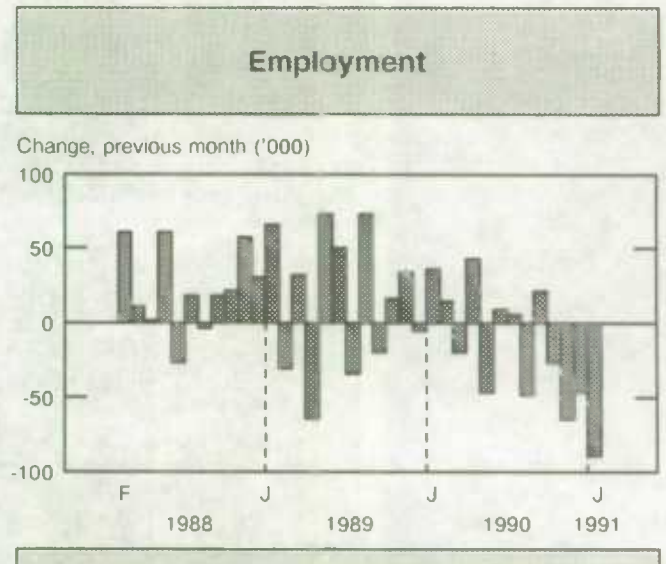
Employment Drops Sharply

The seasonally adjusted estimate of employment fell by 0.7% (90,000 persons) to 12.4 million persons in January. In percentage terms, this was the sharpest drop since 1982. As in the three previous months, the decline was concentrated in full-time employment. Part-time employment was unchanged. The decline in employment for persons aged 25 and over (-0.6%) was distributed evenly among men and women. The drop among youths (-1.3%) was mostly due to decreases among young men. The level of employment fell in six of the ten provinces, but the largest declines occurred in Quebec and Ontario.

The unemployment rate went up to 9.7 from 9.3 in December and from the nine-year low of 7.2 posted in March. The unemployment rate for people aged 15 to 24 years rose to 14.9 from 14.5 in December. It was at a 16-year low of 10.6 in March.

(continued on page 2)

(see also chart on page 6)



STATISTICS CANADA STATISTIQUE CANADA

FEB 15 1991

LIBRARY
BIBLIOTHÈQUE



Statistics
Canada

Statistique
Canada

Canada

... Employment Drops Sharply

Unemployment rose by 3.1% to 1.3 million persons. The number of people in the labour force fell for a third consecutive month. The participation rate (the number of people either working or looking

for work as a proportion of the total population) was at its lowest in three years.

For further information, order *The Labour Force* (catalogue number 71-001) or contact Household Surveys Division at (613) 951-4740.

New Motor Vehicle Sales Fall Further

Seasonally adjusted sales of all new motor vehicles declined by 3.5% in December, the sixth consecutive drop. At 94,000 units, new motor vehicle sales were 27.9% below the average monthly level in 1988.

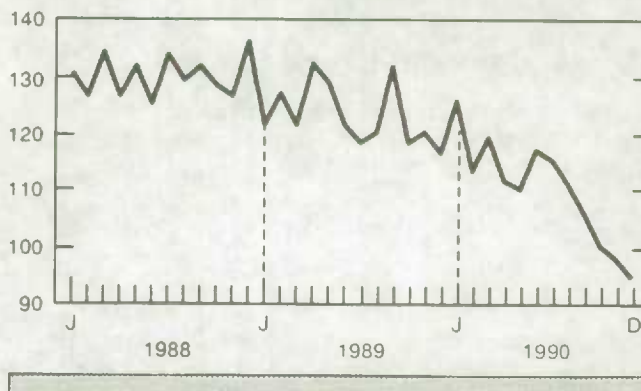
Passenger car sales fell by 4.2%, a sharper decline than the average for the previous five months. Sales of North American passenger cars fell 6.3%, the sixth consecutive decline. Sales of imported passenger cars fell by a slight 0.3%. The share of imported cars in total passenger car sales has been generally increasing since the fall of 1988 (27.2%). It reached 37.1% in December 1990.

Sales of commercial vehicles dropped by 2.3%, the fifth consecutive decline.

For further information, order *New Motor Vehicle Sales* (catalogue number 63-007) or contact Industry Division at (613) 951-3552.

Sales of New Motor Vehicles

Seasonally adjusted, thousands of units



New Housing Price Index Maintains Downward Trend

The New Housing Price Index fell 0.3% in December, contributing to a cumulative decline of 7.2% from the March level. Six of the twenty cities for which indexes are compiled reported declines. The index was unchanged in seven cities.

The index for Toronto fell 0.4%, the twelfth consecutive decline. In the six previous months the index for Toronto dropped on average by 1.7%. In Calgary, the index fell 2.6%, after virtually no change in the previous four months. The index for

Vancouver declined by 0.6%, recording a cumulative decrease of 12.6% from February. In Kitchener-Waterloo, the index dropped for the seventh consecutive month (-1.3%).

The index for house prices only fell 0.4%, while the "land only" index showed no change. Over the previous six months, average monthly declines were much higher for the "house only" index (-1.4%) than for the "land only" index (-0.6%).

For further information, order *Construction Price Statistics* (catalogue number 62-007) or contact Prices Division at (613) 951-9607.

Farm Product Price Index Continues to Decline

In December, the Farm Product Price Index fell 0.6%, the fifth decline in six months. An increase in the crops index was more than offset by a drop in the livestock and animal products index.

The index for livestock and animal products dropped 0.9%. The hogs component fell 4.9%, the fifth decrease in the last six months. The cattle component declined by 0.2%. Over the last two years, it has fluctuated within a narrow range: between 105.2 and 109.5.

(continued on page 3)

... Farm Product Price Index Continues to Decline

The crops index rose 0.2%. The cereals component increased 0.9%, after falling more than 20% from its level in June. The rise was mainly due to higher prices of wheat and corn in most provinces. The oilseeds component fell 1.2% as a result of lower prices for flax and canola. This was the seventh consecutive monthly decrease for the oilseeds component, after six monthly gains. The potatoes

component dropped 3.7%, continuing the decline started in April. Potato prices were at their lowest since June 1988.

The Farm Product Price Index declined in every province except for Newfoundland and Saskatchewan. The largest declines were registered in New Brunswick (-1.3%) and Quebec (-2.5%).

For further information, order Farm Product Price Index (catalogue number 62-003) or contact Agriculture Division at (613) 951-2436.

Farm Input Price Index Edges Up

In the fourth quarter, the Farm Input Price Index edged up by 0.3%, less than the previous two quarterly increases.

The machinery and motor vehicles component posted its largest quarterly gain in eight years, primarily because of higher prices for motor vehicles (4.7%) and for petroleum products (9.4%). The supplies and services component was up 2.5% because of a significant rise in heating fuel prices. After posting a decline in the fourth quarter of 1989, the component for hired farm labour has been rising at an increasing rate. It posted a gain of 1.9% in the fourth quarter of 1990.

The animal production component was down 1.4%, mainly a consequence of lower feed prices (-5.9%), which have been falling since the beginning of 1989, and weanling pigs (-2.7%). The crop production index declined by 1.2%, the fifth decline in six quarters, as prices of seed fell 6.6%, fertilizer prices did not change and pesticides rose marginally. The component representing interest charges fell 1.1%, after gaining 40.2% between the second quarter of 1987 and the third quarter of 1990.

For further information, order Farm Input Price Index (catalogue number 62-004) or contact Prices Division at (613) 951-9607.

Number of Visitors to Canada Unchanged

In December, the volume of foreign travel on trips of one or more nights to Canada remained almost stationary as a rise in the number of travellers from overseas countries was offset by a marginal decrease of 0.6% in the number of American visitors. A very modest upward trend seems to have emerged in recent months.

Overnight international trips by Canadian residents fell 1.7%, the first decline in eight months. Travel to countries other than the United States increased by 3.2%, more than offsetting the decline

in the previous month. The number of trips to the United States dropped 2.5%, after a 4.6% rise in November.

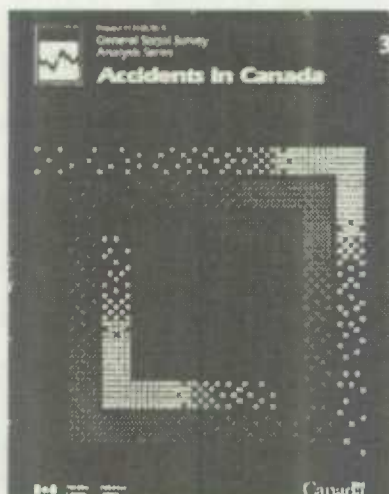
The total number of trips (same-day trips as well as trips of one or more nights) by Canadians to the United States declined by 4.4%, after increasing a cumulative 14.3% between September and November. Total trips to Canada by American residents also fell in December (-1.2%), the first drop in eight months.

For further information, order International Travel - Advance Information (catalogue number 66-001P) or contact Education, Culture and Tourism Division at (613) 951-8933.

PUBLICATIONS RELEASED FROM FEBRUARY 8 TO 14, 1991

Division/title	Period	Catalogue Number	Price: Issue/Subscription		
			Canada (\$Cdn.)	United States	Other Countries
				\$US	
BALANCE OF PAYMENTS					
Security Transactions with Non-Residents	November 1990	67-002	15.80/158	19/190	22.10/221
HOUSEHOLD SURVEYS					
Historical Labour Force Statistics	1990	71-201	61	73	85
Labour Force Information	Week Ended January 19, 1991	71-001P	6.30/63	7.60/76	8.80/88
HOUSING, FAMILY AND SOCIAL STATISTICS					
Accidents in Canada – General Social Survey Analysis Series	February 1991	11-612E	40	48	56
INDUSTRY					
Annual Retail Trade	1988	63-223	22	26	31
Asphalt Roofing	December 1990	45-001	5/50	6/60	7/70
Cement	December 1990	44-001	5/50	6/60	7/70
Electric Lamps (Light Bulbs and Tubes)	December 1990	43-009	5/50	6/60	7/70
Factory Sales of Electric Storage Batteries	December 1990	43-005	5/50	6/60	7/70
Production and Inventories of Process Cheese and Instant Skim Milk Powder	December 1990	32-024	5/50	6/60	7/70
Production of Selected Biscuits	Semi-annual period ended December 1990	32-026	6.75/13.50	8.10/16.20	9.45/18.90
Rigid Insulating Board (Wood Fibre Products)	December 1990	36-002	5/50	6/60	7/70
Shipments of Solid Fuel Burning Heating Products	Quarter Ended December 1990	25-002	4.75/19	5.75/23	6.75/27
INDUSTRY MEASURES AND ANALYSIS					
Gross Domestic Product by Industry	November 1990	15-001	12.70/127	15.20/152	17.80/178
INTERNATIONAL TRADE					
Exports by Commodity	November 1990	65-004	55.10/551	66.10/661	77.10/771
LABOUR					
Work Injuries	1987-1989	72-208	25	30	35
POSTCENSAL SURVEYS					
Leisure and Lifestyles of Persons with Disabilities in Canada, Special Topic Series, The Health and Activity Limitation Survey	January 1991	82-615	35	42	49
SERVICES, SCIENCE, AND TECHNOLOGY					
Service Bulletin – Communications – Telecommunication Statistics	Third Quarter 1990	56-001	8.20/49	9.85/59	11.50/69
Telephone Statistics	November 1990	56-002	8.30/83	10/100	11.60/116
STANDARDS					
Standard Classification of Goods	1988	12-580E	39	47	55

NEW FROM STATISTICS CANADA



Accidents in Canada, 1987

A new publication entitled *Accidents in Canada* presents information on the risk, the prevention, the frequency and the consequences of accidents. Although accident statistics have been available from a number of administrative sources such as hospital morbidity data, worker's compensation data and vital statistics records, new data from the General Social Survey complement these data with information on a broad range of characteristics of the victims. Here are some highlights of the publication:

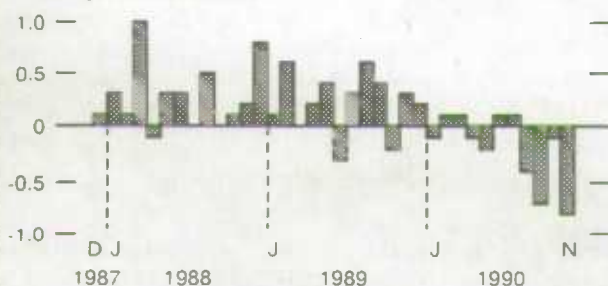
- An estimated one in five Canadians reported having at least one accident in 1987.
- Motor vehicle/traffic accidents accounted for one in three incidents reported. Those which occurred while participating in a sports or leisure activity were the next most frequently reported accidents (23%), followed by work-related accidents (21%). Just over one in ten accidents (13%) occurred in or around the home.
- Of all motor vehicle accidents, 45% happened to people under age 25. Thirty-one percent of all motor vehicle accidents involved men aged 15-24.
- People who drank alcohol on a regular basis were more likely to have experienced one or more accidents in the past three years than those who did not.
- In 1987, approximately 51 million activity-loss days, nine million bed-disability days and two million hospital days were attributable to accidents.

For further information, order Accidents in Canada (catalogue number 11-612E) or contact Housing, Family and Social Statistics Division at (613) 951-1631.

CURRENT TRENDS*

Gross Domestic Product

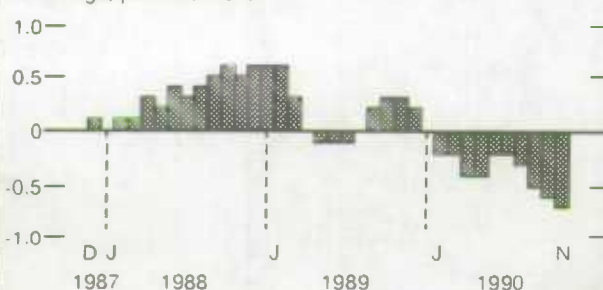
% change, previous month



Gross Domestic Product at factor cost declined by 0.8% in November, the fourth consecutive decline.

Composite Leading Indicator

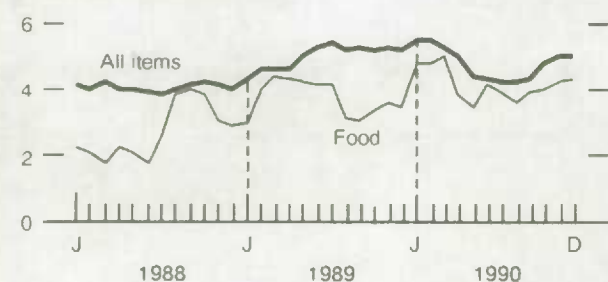
% change, previous month



In November, the Composite Leading Indicator recorded its largest decrease (-0.7%) since it started receding in February 1990.

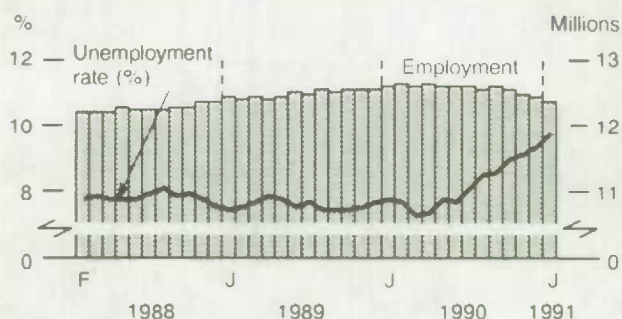
Consumer Price Index

% change, previous year



In December as in November, the Consumer Price Index registered a year-over-year increase of 5.0%.

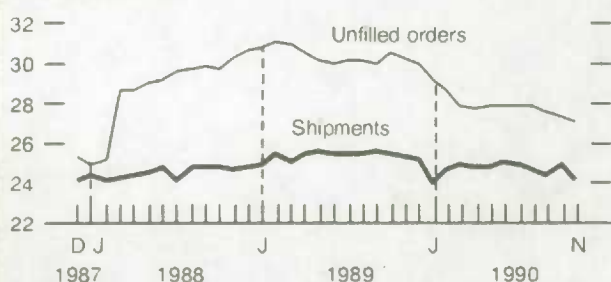
Unemployment Rate and Employment



In January, employment declined by 0.7% (90,000 persons), the sharpest drop since 1982. The unemployment rate rose to 9.7%.

Manufacturing

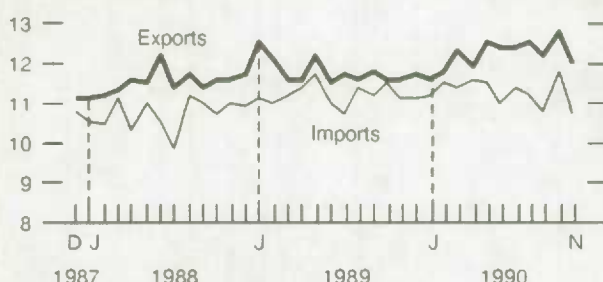
Billions of dollars



In November manufacturing shipments fell 3.0% to \$24.1 billion. Unfilled orders maintained their downward trend.

Merchandise Trade

Billions of dollars



In November, exports declined by 6.7% and imports dropped 9.3%.

*All series are seasonally adjusted except the consumer price index.

LATEST MONTHLY STATISTICS

	Period	Level	Change Previous Period	Change Previous Year
GENERAL				
Gross Domestic Product (\$ billion, 1986)	November	502	-0.8%	-1.9%
Composite Leading Indicator (1981 = 100)	November	140.7	-0.7%	-2.5%
Profits of Industrial Corporations (\$ billion)	3rd Q	5.2	13.6%	-29.5%
DOMESTIC DEMAND				
Retail Trade (\$ billion)	November	16.1	-0.3%	-1.0%
New Motor Vehicle Sales ('000 units)	December*	94	-3.5%	-19.2%
LABOUR				
Employment (millions)	January*	12.4	-0.7%	-2.0%
Unemployment Rate (%)	January*	9.7	0.4	2.0
Participation Rate (%)	January*	66.4	-0.3	-0.9
Labour Income (\$ billion)	November	32.2	-0.1%	5.5%
Average Weekly Earnings (\$)	November	523.03	-0.1%	5.6%
INTERNATIONAL TRADE				
Merchandise Exports (\$ billion)	November	12.0	-6.7%	2.8%
Merchandise Imports (\$ billion)	November	10.7	-9.3%	-3.3%
Merchandise Trade Balance (\$ billion)	November	1.3	0.2	0.7
MANUFACTURING				
Shipments (\$ billion)	November	24.1	-3.0%	-4.5%
New Orders (\$ billion)	November	23.8	-2.8%	-4.3%
Unfilled Orders (\$ billion)	November	27.0	-0.9%	-10.6%
Inventory/ Shipments Ratio	November	1.55	0.05	0.04
Capacity Utilization (%)	3rd Quarter	78.0	-1.1	-5.5
PRICES				
Consumer Price Index (1986 = 100)	December	121.8	-0.1%	5.0%
Industrial Product Price Index (1986 = 100)	December	110.5	-0.2%	1.8%
Raw Materials Price Index (1986 = 100)	December	121.9	-7.2%	15.9%
New Housing Price Index (1986 = 100)	December*	136.1	-0.3%	-6.3%

Note: All series are seasonally adjusted with the exception of average weekly earnings and the price indexes.

* New this week.

I·N·F·O·M·A·T

A Weekly Review

Published by the Communications Division
Statistics Canada.

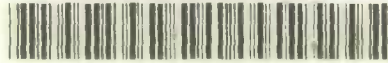
Senior Editor: Greg Thomson (613) 951-1116
Editor: Yves Saint-Pierre (613) 951-1197

R.H. Coats Building, Tunney's Pasture, Ottawa, Ontario K1A 0T6.

Catalogue: 11-002E. Price: Canada: \$2.50 per issue, \$125.00 annually; United States: US\$3.00 per issue, US\$150.00 annually; Other Countries: US\$3.50 per issue, US\$175.00. To subscribe: send money order or cheque payable to the Receiver General for Canada/Publication Sales, Statistics Canada, Ottawa, Ontario K1A 0T6. To order by telephone dial: 1-800-267-6677 within Canada or 613-951-7277 from all other countries.

Published under the authority of the Minister of Industry, Science and Technology. All rights reserved. No part of this publication may be reproduced, stored in a retrieval system or transmitted in any form or by any means, electronic, mechanical, photocopying, recording or otherwise without prior written permission of the Minister of Supply and Services Canada.

Statistics Canada Library
Bibliothèque Statistique Canada



1010062488