



IN·F·O·M·A·T

A WEEKLY REVIEW

Friday, July 31, 1992

OVERVIEW

■ Number of UI Beneficiaries Continues to Rise

In May, 13,000 more Canadians (in seasonally adjusted figures) received regular unemployment insurance benefits, continuing the rising trend evident since January.

■ Trusteed Pension Funds Report Stronger Asset Gains

In the first quarter of 1992, the book value of assets held in trusteed pension funds rose 9.2% from a year earlier to \$222.1 billion.

■ Industrial Product Prices Unchanged

The Industrial Product Price Index in June remained unchanged at May's revised level of 108.7.

■ Raw Material Prices Rise Moderately

The Raw Materials Price Index was up 2.2% in June, largely due to price increases for crude oil.

■ Percentage of Families Receiving UI Increases

Of Canadian husband-wife families with at least one member in the labour force, the percentage reporting unemployment insurance benefits was up to 33% in 1990 compared to 31% in 1989.

Number of UI Beneficiaries Continues to Rise

In May, the seasonally adjusted number of beneficiaries receiving regular unemployment insurance benefits rose by 1.1% to 1.1 million persons but was 4.7% below the level of May 1991. After reaching a peak of 1.2 million in April 1991, the number of beneficiaries declined for seven consecutive months and stabilized in December. It then increased every month since the beginning of 1992.

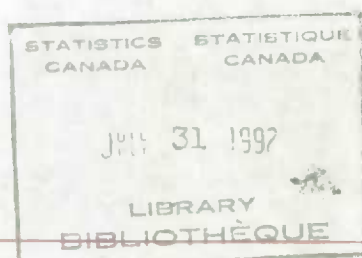
The number of regular UI beneficiaries rose in the Atlantic provinces, Ontario, Saskatchewan and in the territories. But compared to May 1991, the Atlantic provinces and the Northwest Territories recorded increases.

Benefits paid in May totalled \$1.3 billion, up 2.3% from April but they fell 1.8% compared to May 1991. The number of benefit weeks continued to advance, rising 2.2% in May to 5.0 million after a 1.3% increase in April.

(continued on page 2)

U.I. Beneficiaries Receiving Regular Benefits

Millions, seasonally adjusted



Statistics
Canada

Statistique
Canada

Canada

... Number of UI Beneficiaries Continues to Rise

For further information, order *Unemployment Insurance Statistics* (catalogue number 73-001) or contact Labour Division at (613) 951-4039.

U.I. Beneficiaries Receiving Regular Benefits, May 1992

Seasonally Adjusted

Province/Territory	Total (000)	% change, previous month	% change, previous year
Canada	1,147	1.1	-4.8
Newfoundland	73	2.6	1.6
Prince Edward Island	14	7.4	15.4
Nova Scotia	55	3.8	2.5
New Brunswick	60	1.6	1.7
Quebec	364	-0.3	-5.3
Ontario	324	0.6	-5.4
Manitoba	29	-1.7	-13.0
Saskatchewan	25	1.5	-7.1
Alberta	77	-0.8	-3.6
British Columbia	122	-0.4	-12.3
Yukon	2	4.7	-12.4
Northwest Territories	2	6.6	16.1

Trusteed Pension Funds Report Stronger Asset Gains

The book value of assets held in trustee pension funds at the end of the first quarter of 1992 was estimated at \$222.1 billion, up \$15.2 billion from a year earlier. For the seventh consecutive quarter, investment in stocks contributed most significantly to the growth in assets. Previously, bonds had been the largest contributor. Investment in stocks accounted for an unprecedented 73% of the quarterly increase in assets, surpassing the previous high set in the third quarter of 1991 by seven percentage points.

The amount invested in bonds in the first quarter of 1992 was 3.4 times higher than in 1982 while the value of stocks was five times higher. Although the proportion of assets invested in bonds fluctuated within a three-percentage-point range during the 10-year period (1982-1992), it showed a decreasing trend, reaching a low of 45% in the first quarter of 1992. Over the decade, the percentage held in stocks rose steadily, from 22% to 32% of assets.

Income of trustee pension funds was estimated at \$7.7 billion, up 7% from the previous year, while expenditures increased by 15%. The net cash flow (calculated by deducting expenditures from income) amounted to \$4.3 billion.

Investment income, which posted annual growth rates of 15% in 1989 and 33% in 1990, increased by 4% in both 1991 and 1992. These small increases can be attributed to persistently low interest rates.

Although profits generated from the sale of securities dropped 11% in the first quarter of 1992, their proportion of total income (11%) remained stable relative to the previous quarter. This proportion was the largest recorded since the third quarter of 1989.

Payments to retired employees or their survivors were estimated at \$2.6 billion and continued to be the major component of expenditures (76% of the total). These payments increased by 12% from the first quarter of 1991.

For further information, order *Quarterly Estimates of Trusteed Pension Funds* (catalogue number 74-001) or contact Labour Division at (613) 951-4034.

Industrial Product Prices Unchanged

The preliminary figure for the Industrial Product Price Index (IPPI, 1986 = 100) stood at 108.7, unchanged in June from the previous month but was up 0.2% from the same period last year. This was the first year-over-year increase seen since

March 1991. The yearly increase was propelled by an upward movement of 1.8% in the index for finished goods.

Nine of the 21 major groups of products registered monthly increases in their indexes while eight decreased and four remained unchanged.

(continued on page 3)

... Industrial Product Prices Unchanged

Again in June, the value of the American dollar relative to the Canadian dollar was a significant influence on export prices denominated in U.S. currency, this time in the downward direction. The indices mainly affected were autos, trucks and other transportation equipment (-0.6%) and lumber, sawmill and other wood products (-0.3%). There was also a 0.6% decline in the printing and publishing index, due primarily to lower commercial printing prices.

Notable increases were noted in the indexes for petroleum and coal products (1.1%), tobacco and tobacco products (0.9%), and meat, fish and dairy products (0.7%). Paper and paper products rose 0.5% despite the decline in the U.S. dollar, due to higher newsprint paper prices.

For further information, order *Industry Price Indexes* (catalogue number 62-011) or contact Prices Division at (613)951-9607.

Raw Material Prices Rise Moderately

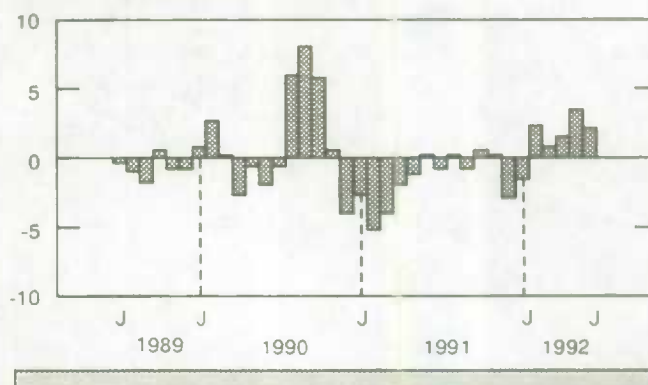
The Raw Materials Price Index (RMPI, 1986=100) rose 2.2% in June to a level of 108.5, posting a fifth consecutive monthly rise. Compared to June 1991, the RMPI was higher by 5.1% as five of the seven components of the total index recorded increases, but the overall increase was mainly attributable to the mineral fuels (11.1%) and wood (9.3%) indexes.

In June, a 6.1% jump in crude oil prices pushed the mineral fuels price index up 5.6%. Prices for crude oils have increased continuously since January 1992. The wood index rose 2.0%, posting its fifth straight monthly increase, reflecting higher prices for logs and bolts (2.7%). The non-ferrous metals index advanced 1.4% as prices of zinc concentrates climbed 7.8% and prices of copper concentrates rose 2.4%.

Moderating the overall rise, the animal products index, which accounts for one-quarter of the RMPI, fell 0.5% in June as higher prices for hogs (3.3%) and fish (4.4%) were offset by a decline in prices for cattle for slaughter (3.5%) and furs, hides and skins (17.8%).

Raw Materials Price Index

% change, previous month



The vegetable products index posted a 0.4% drop. Declines in prices of grains (2.2%), oilseeds (1.1%) and cocoa, coffee and tea (2.1%) were somewhat offset by increases in the prices of potatoes (8.4%) and unrefined sugar (1.7%).

For further information, contact Prices Division at (613) 951-9607.

Percentage of Families Receiving UI Increases

The Husband-wife Family Data, 1990, are based on tax returns filed in the spring of 1991 and represent employment income for part-time as well as full-time workers.

The Unemployment Insurance (UI) rate for husband-wife (HW) families was calculated by dividing the total number of families in which at least one member reported UI benefits by the total number of HW families in which at least one member was in the labour force.

These highlights focus on areas with 500 or more husband-wife families.

- In 1990, 33% of HW families with at least one member in the labour force reported unemployment insurance income, compared to 31% in 1989.
- Rural areas concentrated in eastern Canada showed elevated recipient rates for unemployment insurance. Of these, the highest was found in Harbour Breton, Newfoundland, where 90% of HW families with at least one member in the labour force were UI beneficiaries (median total income = \$36,900).

(continued on page 4)

... Percentage of Families Receiving UI Increases

- The city with the largest percentage of families benefiting from UI was Asbestos, Québec, where 60% of HW families having at least one member in the labour force reported some UI income.
- In 1990, the median total income for husband-wife families in Canada was \$46,600.
- Among the provinces and territories, the median total income for HW families was highest in the Northwest Territories at \$60,300, and lowest in Newfoundland at \$35,900.
- Four of the top five median total incomes were found in urban areas of Toronto. (See accompanying table.)
- Women were contributing more than their spouses to the total family employment income in 21% of Canadian HW families in 1990.
- Hull, Québec, had the highest percentage (29%) of wives contributing more than their spouses to the total HW family employment income. Hull had a median total income, for such families, of \$46,300.

Median Total Incomes for HW Families, Urban Areas

Highest:

Westmount, Montreal	\$126,100
Rosedale, Toronto	\$115,200
Moore Park, Toronto	\$110,900
Lawrence Park, Toronto	\$104,100
York Mills, Toronto	\$102,800

Lowest:

Parc Extension, Montreal	\$ 24,200
Strathcona District, Vancouver	\$ 24,600
Exchange Area, Winnipeg	\$ 25,400
Downtown/Plateau Mt. Royal, Montreal	\$ 26,100
North Portage Area, Winnipeg	\$ 26,500

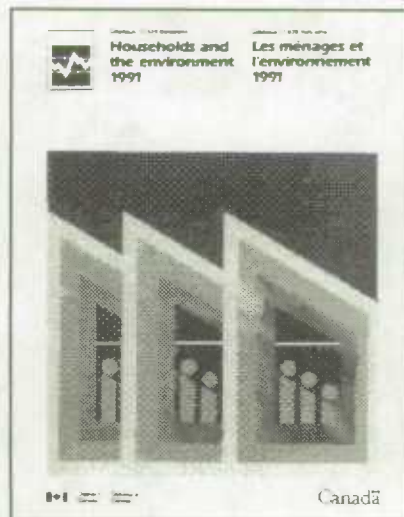
- The province with the largest percentage of wives earning more employment income than their spouses was Prince Edward Island, at 27%. Prince Edward Island had a median total income for HW families of \$37,700.

For further information, contact the Small Area and Administrative Data Division at (613)951-9720.

PUBLICATIONS RELEASED FROM JULY 24 TO JULY 30, 1992

Division/title	Period	Catalogue Number	Price: Issue/Subscription		
			Canada (\$Cdn.)	United States	Other Countries
			\$US		
EDUCATION, CULTURE AND TOURISM					
Focus on Culture: The Canada Council Looks to the Future with Cultural Data, Vol.4, No.2	Summer 1992	87-004	6.25/25	7.50/30	8.75/35
INTERNATIONAL TRADE					
Summary of Canadian International Trade	May 1992	65-001	18.20/182	21.80/218	25.50/255
HOUSEHOLD SURVEYS					
Family Food Expenditure in Canada - 17 Metropolitan Areas	1990	62-554	40	48	56
Households and the Environment	1991	11-526	23.95	28.95	33.95
Parental Work Patterns and Child Care Needs		89-529E	25	30	35
INDUSTRY					
Clothing Industries	1989	34-252	35	42	49
Construction Type Plywood	May 1992	35-001	5/50	6/60	7/70
Corrugated Boxes and Wrappers	June 1992	36-004	5/50	6/60	7/70
Department Store Monthly Sales by Province and Metropolitan Area	April 1992	63-004	2.70/27	3.20/32	3.80/38
Mineral Wool Including Fibrous Glass Insulation	June 1992	44-004	5/50	6/60	7/70
Non-Metallic Mineral Products Industries	1989	44-250	35	42	49
Oil Pipe Line Transport	April 1992	55-001	10/100	12/120	14/140
Primary Textile Industries	1989	34-250	35	42	49
Production and Disposition of Tobacco Products	June 1992	32-022	5/50	6/60	7/70
Production, Shipments and Stocks on Hand of Sawmills in British Columbia	May 1992	35-003	7.10/71	8.50/85	9.90/99
Production, Shipments and Stocks on Hand of Sawmills East of the Rockies (Excluding Newfoundland and Prince Edward Island)	May 1992	35-002	10/100	12/120	14/140
The Sugar Situation	June 1992	32-013	5/50	6/60	7/70
LABOUR					
Employment, Earnings and Hours	April 1992	72-002	28.50/285	34.20/342	39.90/399
PRICES					
Farm Input Price Index	First Quarter 1992	62-004	12.25/49	14.75/59	17.25/69
Industry Price Indexes	May 1992	62-011	18.20/182	21.80/218	25.50/255
SERVICES, SCIENCE AND TECHNOLOGY					
Restaurant, Caterer and Tavern Statistics	May 1992	63-011	6.10/61	7.30/73	8.50/85
Service Industries Service Bulletin: Value Added in Leisure and Personal Services, Vol.4, No.3	1987-1989	63-015	7.20/43	8.65/52	10/60
Science Statistics Service Bulletin: Federal Government Expenditures on Scientific Activities, Vol.16, No.4	1992-1993	88-001	7.10/71	8.50/85	9.90/99
Telephone Statistics	May 1992	56-002	8.30/83	10/100	11.60/116
TRANSPORTATION					
Air Carrier Traffic at Canadian Airports	April - June 1991	51-005	30.50/122	36.50/146	42.75/171
Air Passenger Origin and Destination, Domestic Report	1991	51-204	38	46	53
Aviation Statistics Centre Service Bulletin, Vol.24, No.7	July 1992	51-004	9.30/93	11.20/112	13/113
Railway Operating Statistics	February 1992	52-003	10.50/105	12.60/126	14.70/147

NEW FROM STATISTICS CANADA

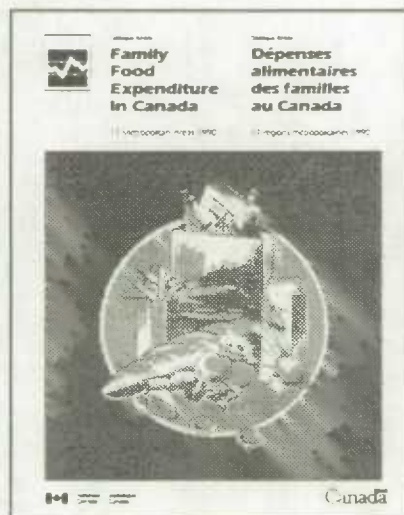


Households and the Environment

In May 1991, Statistics Canada conducted the Household Environment Survey to measure household actions that have (or are perceived to have) positive or negative impacts on the environment. The survey provides baseline information to use in measuring progress towards sound environmental practices at the household level.

The subjects examined include recycling and waste reduction practices, energy and water conservation practices, the use of recycled products, and the use and disposal of potentially hazardous household substances.

For national and provincial estimates and estimates by other characteristics, the publication *Households and the Environment, 1991* (catalogue number 11-526, \$23.95) is now available. For more information, contact Bruce Mitchell (613-951-3742), National Accounts and Environment Division or Peter Hower (613-951-4633), Household Surveys Division.

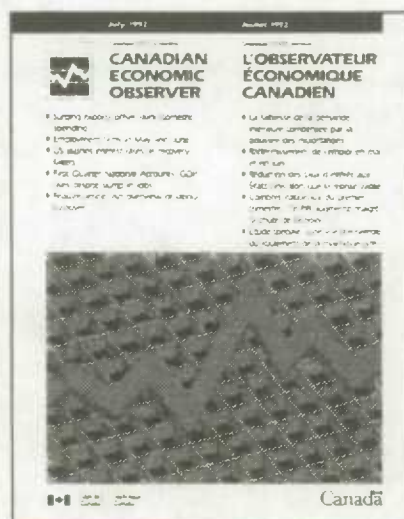


Family Food Expenditure in Canada - 17 Metropolitan Areas

The publication *Family Food Expenditure in Canada - 17 Metropolitan Areas, 1990* (catalogue number 62-554, \$40) is now available and provides results based on a sample of 4,816 households that responded to the Food Expenditure Survey throughout 1990. (The previous publication in this series referred to 1986 food expenditures.) This publication presents a series of tables showing the food expenditure patterns of households living in 17 selected metropolitan areas across Canada. It also includes a brief analysis of these patterns.

Many tables are included which show average weekly expenditures classified by type of food purchased in stores and meals purchased in restaurants. The tables present expenditure information by a number of different socio-economic characteristics of the households, including income. Some information is included on quantities purchased and on purchases in different types of stores and restaurants.

A recently released companion publication, *Family Expenditure in Canada - 17 Metropolitan Areas, 1990* (catalogue number 62-555, \$42), presents the detailed total budgets of households. To obtain more information about these publications or any other products from the Food Expenditure Survey, contact the Family Expenditure Surveys Section, Household Surveys Division (613-951-9781 or fax 613-951-0562).



Canadian Economic Observer

The July issue of *Canadian Economic Observer*, Statistics Canada's flagship publication for economic statistics, is now available.

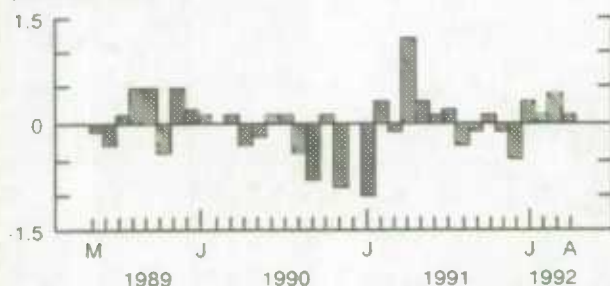
The July issue contains a monthly summary of the economy, major economic events in June, and a feature article on turnover in the Canadian labour market. A statistical summary contains a wide range of tables and graphs on the principal economic indicators for Canada, the provinces and major industrial nations.

Canadian Economic Observer (catalogue number 11-010, \$22/\$220) can now be ordered from Publication Sales (613-951-7277). For more information, call Philip Cross (613-951-9162), Current Analysis Section.

CURRENT TRENDS

Gross Domestic Product

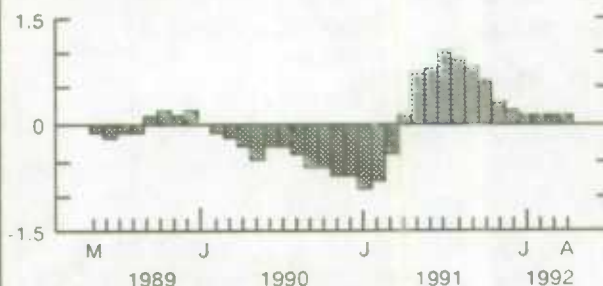
% change,
previous month



Real gross domestic product at factor cost crept up 0.1% in April after a 0.4% gain in March.

Composite Leading Indicator

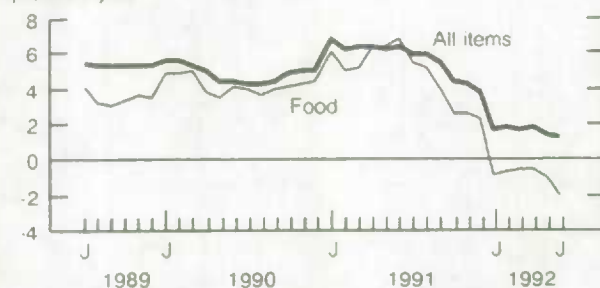
% change,
previous month



The composite leading indicator posted a fourth straight increase of 0.1% in April.

Consumer Price Index

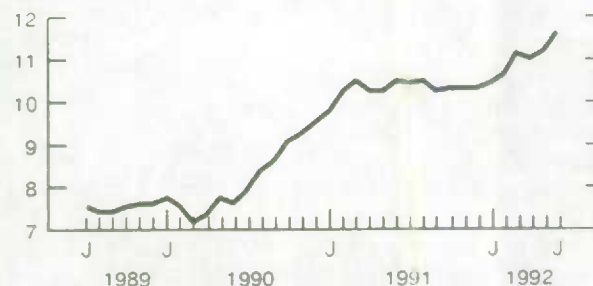
% change,
previous year



In June, the year-over-year increase in the all-items CPI stood at 1.1%, while the food index declined by 2.2%.

Unemployment Rate

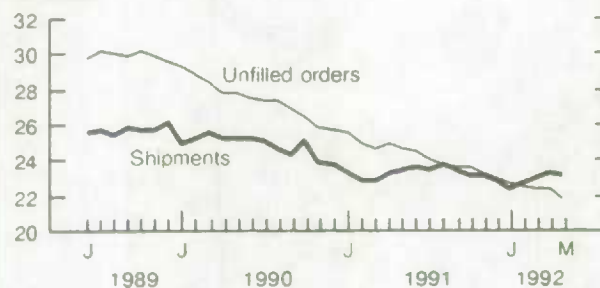
%



The unemployment rate rose 0.4 percentage points in June to 11.6, nearly an eight-year high.

Manufacturing

Billions
of dollars



Canadian manufacturers' shipments dropped 0.5% in May to \$23.0 billion. Unfilled orders fell by 2.3% to \$21.7 billion.

Merchandise Trade

Billions
of dollars



In May, the seasonally adjusted value of imports decreased by \$440 million while that of exports rose by \$100 million.

Note: All series are seasonally adjusted except the consumer price index.

LATEST MONTHLY STATISTICS

	Period	Level	Change Previous Period	Change Previous Year
GENERAL				
Gross Domestic Product (\$ billion, 1986)	April	506	0.1%	0.7%
Composite Leading Indicator (1981 = 100)	April	144.3	0.1%	5.7%
Operating Profits of Enterprises (\$ billion)	1st Quarter	10.4	5.1%	-11.9%
DOMESTIC DEMAND				
Retail Trade (\$ billion)	May	15.1	-0.7%	-1.1%
New Motor Vehicle Sales ('000 units)	May	98.3	-1.1%	-11.4%
LABOUR				
Employment (millions)	June	12.2	0.2%	-0.9%
Unemployment Rate (%)	June	11.6	0.4	1.1
Participation Rate (%)	June	65.8	0.4	-0.7
Labour Income (\$ billion)	April	32.2	0.1%	2.3%
Average Weekly Earnings (\$)	April	545.85	0.4%	3.2%
INTERNATIONAL TRADE				
Merchandise Exports (\$ billion)	May	12.9	0.8%	10.1%
Merchandise Imports (\$ billion)	May	11.7	-3.6%	6.4%
Merchandise Trade Balance (\$ billion)	May	1.2	0.54	0.49
MANUFACTURING				
Shipments (\$ billion)	May	23.0	-0.5%	-1.6%
New Orders (\$ billion)	May	22.5	-2.4%	-2.3%
Unfilled Orders (\$ billion)	May	21.7	-2.3%	-11.4%
Inventory/ Shipments Ratio	May	1.49	0.01	-0.07
Capacity Utilization (%)	1st Quarter	69.8	-0.5	-0.4
PRICES				
Consumer Price Index (1986 = 100)	June	128.1	0.2%	1.1%
Industrial Product Price Index (1986 = 100)	June*	108.7	0.0%	0.2%
Raw Materials Price Index (1986 = 100)	June*	108.5	2.2%	5.1%
New Housing Price Index (1986 = 100)	May	134.2	0.1%	-0.1%

Note: All series are seasonally adjusted with the exception of average weekly earnings and the price indexes.

* New this week.

KEY RELEASE CALENDAR: AUGUST 1992*

Monday	Tuesday	Wednesday	Thursday	Friday
3	4 Canadian Composite Leading Indicator, May Short-term Expectations Survey	5 Help-wanted Index, July	6 Estimates of Labour Income, May	7 Labour Force Survey, July
10 New Motor Vehicle Sales, June New Housing Price Index, June Farm Product Price Index, June	11 Migration, 1990-91 Department Store Sales by Province and Metropolitan Area, June	12	13	14 Travel Between Canada and Other Countries, June
17 Department Store Sales - Advance Release, July	18 Monthly Survey of Manufacturing, June	19 Preliminary Statement of Canadian International Merchandise Trade, June Sales of Natural Gas, June	20 The Consumer Price Index, July Farm Cash Receipts, January-June	21 Retail Trade, June
24 Families - Lone-parent and Non-family Persons, 1990 Department Store Sales and Stocks, June	25 Canada's International Transactions in Securities, June Wholesale Trade, June Employment, Earnings and Hours, June	26 Unemployment Insurance Statistics, June	27 Industrial Product Price Index, July Raw Materials Price Index, July	28 Building Permits, June International Travel Account, April-June Field Crop Reporting Series: No.5 - Stocks of Canadian Grain at July 31 Quarterly Financial Statistics of Enterprises, Second Quarter
31 National Income and Expenditure Accounts (Gross Domestic Product), April-June Financial Flow Accounts, April-June Canadian Balance of International Payments, April-June Real Gross Domestic Product at Factory Cost by Industry, June				

* Release dates for International Trade, the Consumer Price Index and the Labour Force Survey are fixed; dates for other data series may change.

I·N·F·O·M·A·T

A Weekly Review

Published by the Communications Division Statistics Canada.

Senior Editor: Greg Thomson (613) 951-1116

Editors: Louise Larouche, Monica Song (613) 951-1197

R.H. Coats Building, Tunney's Pasture, Ottawa, Ontario K1A 0T6.

Catalogue: 11-002E. Price: Canada: \$2.50 per issue, \$125.00 per year; United States: US\$3.00 per issue, US\$150.00 per year; Other Countries: US\$3.50 per issue, US\$175.00. Canadian customers please remember to add 7% GST. To subscribe: send money order or cheque payable to the Receiver General for Canada/Publication Sales, Statistics Canada, Ottawa, Ontario K1A 0T6. To order by telephone dial: 1-800-267-6677 within Canada or 613-951-7277 from all other countries.

Published by authority of the Minister responsible for Statistics Canada. © Minister of Industry, Science and Technology, 1992. All rights reserved. No part of this publication may be reproduced, stored in a retrieval system or transmitted in any form or by any means, electronic, mechanical, photocopying, recording or otherwise without prior written permission from Chief, Author Services, Publications Division, Statistics Canada, Ottawa, Ontario, Canada K1A 0T6.

The paper used in this publication meets the minimum requirements of American National Standard for Information Sciences - Permanence of Paper for Printed Library Materials, ANSI Z39.48 - 1984.



Monthly Labor Review

... an economics journal from the United States



Sound Economics

Twelve issues of the **Monthly Labor Review** for only \$27.50. Analytical articles, Developments in Industrial Relations, Major Agreements Expiring, 51 tables of Current Labor Statistics, Research Summaries, Book Reviews, and much more. Use the coupon below to place your order for 1 or 2 years.

Charge your order. It's easy!

To fax your orders and inquiries –
(202) 512-2233.

Order Processing Code: **5258**

Yes, I am ordering a subscription to:

☐ **Monthly Labor Review, MLR**, for ☐ 1 year for \$27.50; or
☐ 2 years for \$55.

The total cost of my order is \$_____. Prices include postage and handling and are subject to change. (Payable in US dollars.)

(Company or personal name)

(Additional address/attention line)

(Street address)

(City, Province, Postal Code)

(Daytime phone, including area code)

Please Choose Method of Payment:

☐ Check payable to the Superintendent of Documents

☐ GPO Deposit Account –

☐ VISA or ☐ MasterCard Account

(Credit card expiration date)

Thank you for your order!

(Signature)

Mail to: New Orders, Superintendent of Documents, P.O. Box 371954,
Pittsburgh, PA 15250-7954.

(This publication is only available in English.)