



# IN·F·O·M·A·T

## A WEEKLY REVIEW

Friday, October 16, 1992

### OVERVIEW

#### ■ Unemployment Rate Edges Down

The unemployment rate fell to 11.4% in September after staying at 11.6% for the previous three months, and unemployment fell by 40,000 as a large number of youths stopped looking for work.

#### ■ Sales of New Motor Vehicles Drop in August

After increasing by 4.7% in July, seasonally adjusted sales of new motor vehicles fell by 1.1% in August, a decline that represented the fifth monthly decrease this year.

#### ■ New Housing Prices Remained the Same in August

The New Housing Price Index for Canada (1986=100) remained unchanged at 134.7 in August, following five small monthly increases.

#### ■ Arson is a High-impact Crime

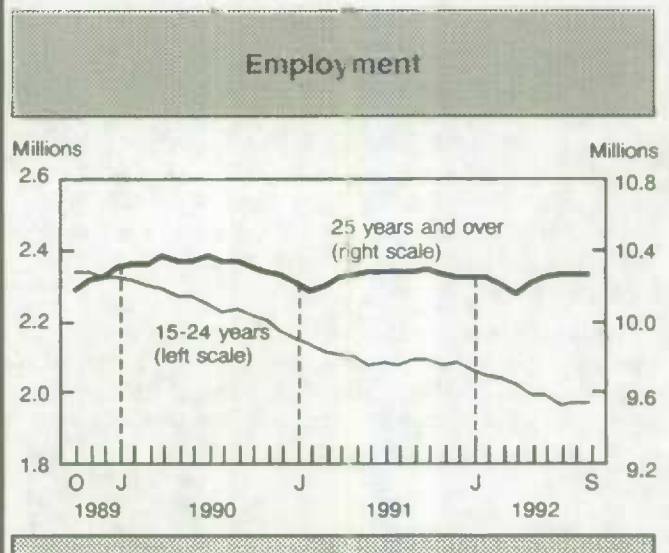
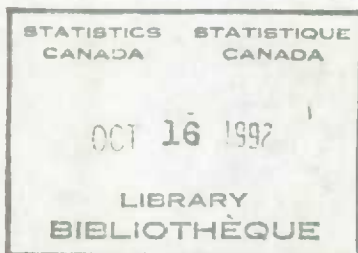
In 1990, there were 57 people killed and 551 injured in known or suspected incendiary fires in Canada. During the same year, the value of property damage reached \$244 million.

### Unemployment Rate Edges Down

In September, the unemployment rate fell to 11.4% after staying at 11.6% for the previous three months. The level of unemployment decreased by 40,000 as a large number of youths stopped looking for work. For persons aged 15 to 24, the unemployment rate fell 1.3 percentage points in September to 17.9 but at the same time the participation rate fell 1.1 percentage points to 64.4. Only the Prairie provinces showed single-digit unemployment rates. Québec and the Atlantic provinces continued to show rates higher than the average for the nation.

The seasonally adjusted level of employment increased for the second month in a row, this time by 8,000, and was concentrated among men. Employment in community, business and personal services continued to rise, by 60,000 in September,

(continued on page 2)



### ... Unemployment Rate Edges Down

bringing the total increase since April to 154,000. Employment losses were noted in trade (-37,000) and public administration (-15,000).

For further information, order *The Labour Force* (catalogue number 71-001), or contact Household Surveys Division at (613) 951-4720. (See also "Current Trends" chart on page 6.)

## PROVINCIAL PERSPECTIVES

### Labour Force Survey Results for September 1992

	Labour Force		Employment		Unemployment	
	'000	% change previous month	'000	% change, previous month	'000	Rate (%)
<b>Canada</b>	<b>13,794</b>	<b>-0.2</b>	<b>12,227</b>	<b>0.1</b>	<b>1,567</b>	<b>11.4</b>
Newfoundland	234	0.9	189	2.2	45	19.2
Prince Edward Island	64	-1.5	53	0.0	11	17.9
Nova Scotia	414	-0.2	363	0.8	51	12.3
New Brunswick	334	0.9	293	1.4	41	12.3
Québec	3,387	-0.2	2,964	0.2	423	12.5
Ontario	5,299	0.2	4,698	0.2	601	11.3
Manitoba	532	0.4	483	1.3	49	9.2
Saskatchewan	476	0.0	436	0.2	40	8.4
Alberta	1,366	-0.8	1,241	-0.3	125	9.2
British Columbia	1,693	-0.3	1,513	0.0	180	10.6

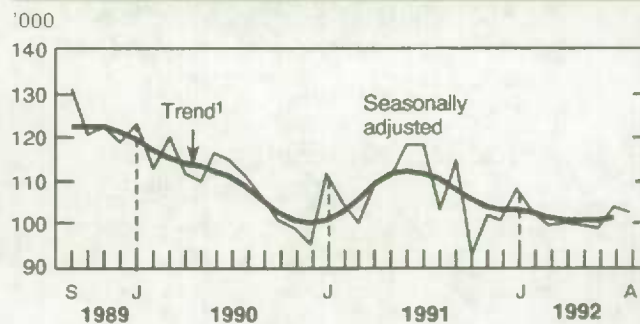
### Sales of New Motor Vehicles Drop in August

Seasonally adjusted sales of all new motor vehicles fell 1.1% in August to a level of 102,000 units. This decline contrasted with an increase in sales recorded the previous month but was in line with the underlying downward trend. In comparison with August 1991, sales decreased 0.7%, the eighth consecutive month to have a year-over-year drop.

The decline was attributable to weaker sales of passenger cars. Sales of North-American built cars dropped 3.9% to 42,000 units, partly offsetting the increase of 6.9% recorded in July. Sales of imported passenger cars fell 1.7% to a level of 24,000 units. Sales of North-American built cars stood 7.5% below the level of a year ago while those of imported cars were down 1.4%.

Sales of commercial vehicles rose for the fourth straight month, advancing by 2.6% in August to 36,000 units. Sales were 9.1% higher than in the same period last year and represented the first year-over-year increase in five months.

### Sales of New Motor Vehicles, Canada, in Units



<sup>1</sup> The short-term trend represents a moving average of the data.

For further information, order *New Motor Vehicle Sales* (catalogue number 63-007) or contact Industry Division at (613) 951-9824.



## New Housing Prices Remained the Same in August

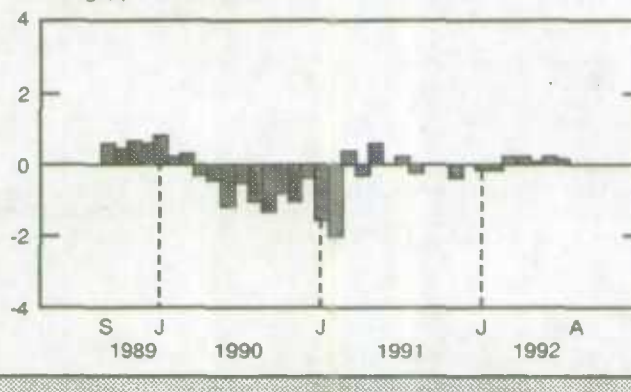
The New Housing Price Index for Canada (1986=100) has shown little change since March, increasing by 0.1% or 0.2% per month. In August, the index remained at 134.7, unchanged from the level recorded in July. Five of the 20 cities included in the Canada composite index posted increases while six declined and nine were unchanged.

While the index for Vancouver showed the largest monthly gain (0.5%), this was substantially less than the 1.7% advance registered in July. The index for Vancouver also showed the steepest year-over-year increase (9.6%). The index for Edmonton was up by 0.3% in August following two months of no change and in Québec City, prices for new houses fell for the second month in a row, this time by 0.5%.

The House Only Index slipped for the second straight month, by 0.1% in August to 124.5. Similarly, the Land Only Index edged down by 0.1% to 165.2, the first decline in nine months.

### New Housing Price Index

% change, previous month



For further information, order *Construction Price Statistics* (catalogue number 62-007) or contact *Prices Division* at (613) 951-9607.

## Arson is a High-impact Crime

In 1990, there were 57 people killed and 551 injured in known or suspected incendiary fires. During the same year, the value of property damage reached \$244 million or an average of \$24,000 per incident.

Conservative estimates suggest that there are over 10,000 arson incidents annually. Data shows that there were 10,371 known or suspected incendiary fires in 1990, representing 15% of all fires. Preliminary crime statistics indicate that the police reported 12,506 arson offenses in 1991.

Single homes were the most favoured locations for arson incidents (31%). Other areas most frequently reported included streets (19%), commercial and corporate locations (17%), and open areas such as fields (13%). Street incidents would typically involve garbage or vehicle fires.

Statistics reported by police and fire officials suggest that, with the exception of two peak periods, the magnitude of Canada's arson problem has not

worsened since data were first collected in 1974. Population-based rates for both arson offenses and incendiary fires in 1990 matched rates reported in 1978.

While Canada's arson problem does not appear to have grown over time, there has been a general decline in the proportion of cases solved. An accused was identified in 30% of all cases in 1974 compared to just 21% in 1991.

The nature of what is legally regarded as arson in Canada is changing. In July 1990, Canada strengthened its arson laws by broadening the scope of the crime and attaching heavier penalties to it. As a result, more situations involving fires are now considered arson and those held responsible are facing stiffer penalties.

For further information, order *The Juristat Service Bulletin: Arson in Canada*, Vol. 12, No. 19 (catalogue number 85-002) or contact the *Canadian Centre for Justice Statistics* at (613) 951-9023.

# PUBLICATIONS RELEASED FROM OCTOBER 9 TO 15, 1992

Division/title	Period	Catalogue Number	Price: Issue/Subscription		
			Canada (\$Cdn.)	United States	Other Countries
			\$US		
<b>BALANCE OF PAYMENTS</b>					
Canada's Balance of International Payments	Second Quarter 1992	67-001	27.50/110	33/132	38.50/154
Canada's International Transactions in Securities	July 1992	67-002	15.80/158	19/190	22.10/221
<b>CANADIAN CENTRE FOR JUSTICE STATISTICS</b>					
Juristat Service Bulletin – Arson in Canada	Vol. 12, No. 19	85-002	3.60/90	4.30/108	5/126
<b>CENSUS</b>					
Profile of Census Metropolitan Areas and Census Agglomerations – Part A	1991 Census	93-337	40	48	56
<b>EDUCATION, CULTURE AND TOURISM</b>					
Periodical Publishing	1990-91	87-203	17	20	24
<b>HOUSEHOLD SURVEYS</b>					
Labour Force Information	September 1992	71-001P	6.30/63	7.60/76	8.80/88
<b>INDUSTRY</b>					
Cement	August 1992	44-001	5/50	6/60	7/70
Factory Sales of Electric Storage Batteries	August 1992	43-005	5/50	6/60	7/70
Footwear Statistics	August 1992	33-002	5/50	6/60	7/70
Gas Utilities	June 1992	55-002	12.70/127	15.20/152	17.80/178
New Motor Vehicle Sales	January 1992	63-007	14.40/144	17.30/173	20.20/202
Production and Shipments of Steel Pipe and Tubing	August 1992	41-011	5/50	6/60	7/70
Specified Domestic Electrical Appliances	August 1992	43-003	5/50	6/60	7/70
Steel Wire and Specified Wire Products	August 1992	41-006	5/50	6/60	7/70
<b>INTERNATIONAL TRADE</b>					
Exports by Commodity	July 1992	65-004	55.10/551	66.10/661	77.10/771
<b>NATIONAL ACCOUNTS AND ENVIRONMENT</b>					
National Income and Expenditure Accounts	Quarterly Estimates, Second Quarter 1992	13-001	20/80	24/96	28/112
<b>PRICES</b>					
Consumer Price Index	September 1992	62-001	9.30/93	11.20/112	13/130
<b>TRANSPORTATION</b>					
Railway Carloadings	August 1992	52-001	8.30/83	10/100	11.60/116

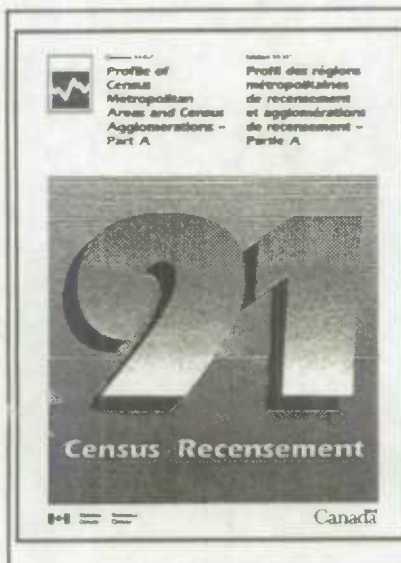


## NEW FROM STATISTICS CANADA

### Health and Activity Limitation Data

The first results from the 1991 post-censal Health and Activity Limitation Survey (HALS) are available. The survey includes information on the nature and severity of disability among Canadians as well as the barriers that the disabled face in the conduct of their everyday activities. The first release profiles the age and sex characteristics of Canadians with disabilities, as well as the nature and severity of their disabilities.

*To obtain copies of the data, contact the Post-censal Surveys Program (613-951-4414).*



### Profile of Census Metropolitan Areas and Census Agglomerations - Part A

This publication provides profiles of census metropolitan areas (CMAs) and census agglomerations (CAs) based on data collected from the 1991 Census. The profiles show population counts by age, sex, marital status and mother tongue. Also shown are dwelling counts by type and tenure, households by size, and families by size, structure and presence of never-married sons and daughters.

The publication contains a single table that displays data for each geographic area as well as for Canada, the provinces and territories. A geographic index is included for locating data for a specific CMA or CA. Reference maps showing CMAs and CAs are published separately.

*Profile of Census Metropolitan Areas and Census Agglomerations - Part A (catalogue number 93-337, \$40) is now available. To obtain a copy contact your nearest Statistics Canada Regional Reference Centre.*

### A Statistical Portrait of Elementary and Secondary Education in Canada

Statistics Canada and the Council of Ministers of Education, Canada are pleased to announce the release of the second edition of this joint publication, which was prepared under the direction of the Canadian Education Statistics Council.

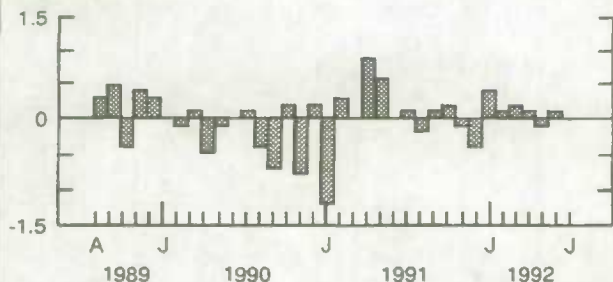
The publication represents a consensus among the provinces and territories on the most significant, interprovincially comparable statistics on Canada's elementary and secondary education systems that have been developed. The first edition of the statistical portrait provided descriptions of students, teachers and costs of education in Canada. While this second edition explores similar themes, the emphasis has been placed on outcomes of the education system.

*Enquiries about this non-catalogued publication, A Statistical Portrait of Elementary and Secondary Education in Canada (ISBN 0-660-55834-3, \$12), should be directed to either of the following: Education, Culture and Tourism Division, Statistics Canada, Ottawa, Ontario, Canada K1A 0T6, telephone: (613) 951-9039; or Council of Ministers of Education - Canada, Room 5-200, 252 Bloor Street West, Toronto, Ontario, Canada M5S 1V5, telephone: (416) 964-2551.*

## CURRENT TRENDS

### Gross Domestic Product

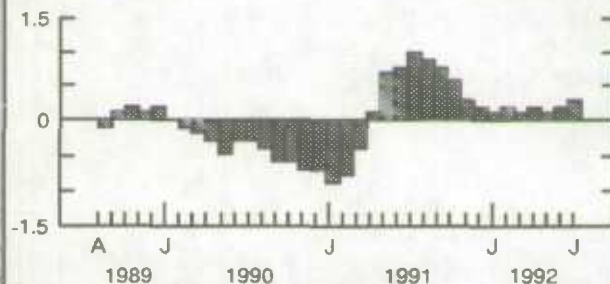
% change,  
previous month



Gross domestic product at factor cost was unchanged in July as a 0.4% increase in services output was completely offset by a 0.7% drop in goods production.

### Composite Leading Indicator

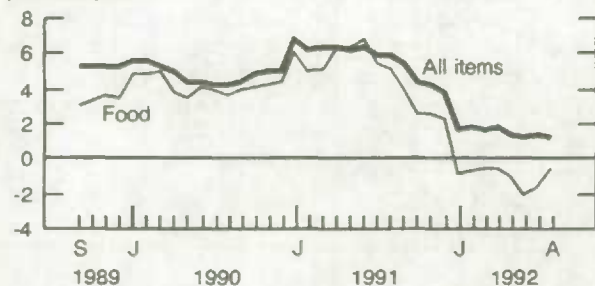
% change,  
previous month



Growth in the composite leading indicator rose from 0.2% in June to 0.3% in July, largely because of gains in both house sales and housing starts.

### Consumer Price Index

% change,  
previous year



The CPI posted a 1.2% increase from August 1991, in line with the increases recorded since January. The food index declined by 0.7%, marking the eighth straight month to have a year-over-year decrease.

### Unemployment Rate

%



The seasonally adjusted unemployment rate fell to 11.4% in September after staying at 11.6% for the previous three months.

### Manufacturing

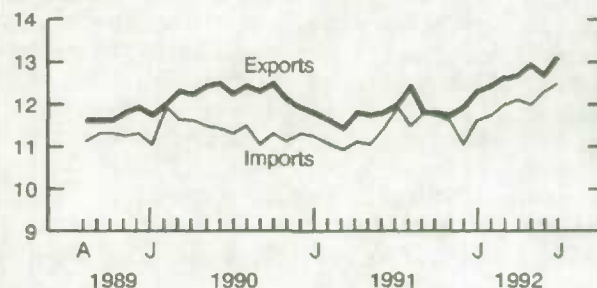
Billions  
of dollars



Canadian manufacturers' shipments dropped 2.1% in July to \$22.6 billion and unfilled orders fell by 0.5% to \$22.0 billion.

### Merchandise Trade

Billions  
of dollars



In July, exports climbed 3.2% to \$13.1 billion after decreasing 1.2% in June. Imports rose by 1.6% to \$12.5 billion, a second straight monthly increase.

**Note:** All series are seasonally adjusted except the consumer price index.



## LATEST MONTHLY STATISTICS

	Period	Level	Change Previous Period	Change Previous Year
<b>GENERAL</b>				
Gross Domestic Product (\$ billion, 1986)	July	501.8	0.0%	0.4%
Composite Leading Indicator (1981 = 100)	July	145.7	0.3%	4.1%
Operating Profits of Enterprises (\$ billion)	2nd Quarter	9.7	-8.5%	-17.8%
<b>DOMESTIC DEMAND</b>				
Retail Trade (\$ billion)	July	15.3	-0.2%	0.2%
New Motor Vehicle Sales ('000 units)	August*	102.2	-1.1%	-0.7%
<b>LABOUR</b>				
Employment (millions)	September*	12.2	0.1%	-1.1%
Unemployment Rate (%)	September*	11.4	-0.2	1.2
Participation Rate (%)	September*	65.3	-0.2	-0.8
Labour Income (\$ billion)	July	32.4	0.3%	2.3%
Average Weekly Earnings (\$)	July	551.05	0.4%	3.3%
<b>INTERNATIONAL TRADE</b>				
Merchandise Exports (\$ billion)	July	13.1	3.2%	9.0%
Merchandise Imports (\$ billion)	July	12.5	1.6%	5.6%
Merchandise Trade Balance (\$ billion)	July	0.62	0.22	0.43
<b>MANUFACTURING</b>				
Shipments (\$ billion)	July	22.6	-2.1%	-2.7%
New Orders (\$ billion)	July	22.5	-3.1%	-1.5%
Unfilled Orders (\$ billion)	July	22.0	-0.5%	-8.2%
Inventory/ Shipments Ratio	July	1.50	0.03	-0.03
Capacity Utilization (%)	2nd Quarter	73.4	0.6	0.1
<b>PRICES</b>				
Consumer Price Index (1986 = 100)	August	128.4	0.0%	1.2%
Industrial Product Price Index (1986 = 100)	August	109.2	0.1%	1.5%
Raw Materials Price Index (1986 = 100)	August	107.8	-1.5%	5.1%
New Housing Price Index (1986 = 100)	August*	134.7	0.0%	0.2%

*Note: All series are seasonally adjusted with the exception of average weekly earnings and the price indexes.*

\* New this week.

## I·N·F·O·M·A·T

### A Weekly Review

Published by the Communications Division Statistics Canada,  
10-N, R.H. Coats Bldg, Ottawa, Ontario K1A 0T6.

Senior Editor: Greg Thomson (613) 951-1187

Editor: Louise Larouche (613) 951-1197

Catalogue: 11-002E. Price: Canada: \$2.50 per issue, \$125.00  
per year; United States: US\$3.00 per issue, US\$150.00 per year;  
Other Countries: US\$3.50 per issue, US\$175.00. Canadian  
customers please add 7% GST.

To subscribe: send money order or cheque payable to the  
Receiver General for Canada/Publication Sales, Statistics  
Canada, Ottawa, Ontario K1A 0T6. To order by telephone dial:  
1-800-267-6677 from Canada and the United States or 613-  
951-7277 from all other countries.

Published by authority of the Minister responsible for Statistics  
Canada. © Minister of Industry, Science and Technology, 1992. All  
rights reserved. No part of this publication may be reproduced,  
stored in a retrieval system or transmitted in any form or by any  
means, electronic, mechanical, photocopying, recording or  
otherwise without prior written permission from Licence Services,  
Marketing Division, Statistics Canada, Ottawa, Ontario, Canada  
K1A 0T6.

The paper used in this publication meets the minimum  
requirements of American National Standard for Information  
Sciences - Permanence of Paper for Printed Library Materials,  
ANSI Z39.48 - 1984.





1010110980

## Regional Reference Centres

Statistics Canada's regional reference centres provide a full range of the bureau's products and services. Each reference centre is equipped with a library and a sales counter where users can consult or purchase publications, microcomputer and CD-ROM diskettes, microfiche, maps and more.

Each centre has facilities to retrieve information from Statistics Canada's computerized data retrieval systems CANSIM and Telichart. A telephone inquiry service is also available with toll-free numbers for regional clients outside local calling areas. Many other valuable services – from seminars to consultations – are also offered. Call or write your regional reference centre for information.

### Newfoundland and Labrador

Advisory Services  
Statistics Canada  
3rd floor  
Viking Building  
Crosbie Road  
St. John's, Newfoundland  
A1B 3P2

Local calls: 772-4073  
Toll free service: 1-800-563-4255  
Fax: 1-709-772-6433

### Maritime Provinces

Advisory Services  
Statistics Canada  
North American Life Centre  
1770 Market Street  
Halifax, Nova Scotia  
B3J 3M3

Local calls: 426-5331  
Toll free service: 1-800-565-7192  
Fax: 1-902-426-9538

### Quebec

Advisory Services  
Statistics Canada  
200 René Lévesque Blvd. W.  
Guy Favreau Complex  
Suite 412, East Tower  
Montreal, Quebec  
H2Z 1X4

Local calls: 283-5725  
Toll free service: 1-800-361-2831  
Fax: 1-514-283-9350

### Ontario

Advisory Services  
Statistics Canada  
10th Floor  
Arthur Meighen Building  
25 St. Clair Avenue East  
Toronto, Ontario  
M4T 1M4

Local calls: 973-6586  
Toll free service: 1-800-263-1136  
Fax: 1-416-973-7475

### National Capital Region

Advisory Services  
Statistical Reference Centre (NCR)  
Statistics Canada  
Lobby  
R.H. Coats Building  
Holland Avenue  
Ottawa, Ontario  
K1A 0T6

Local calls: 951-8116  
If outside the local calling area, please  
dial the toll free number for your  
province.  
Fax: 1-613-951-0581

### Manitoba

Advisory Services  
Statistics Canada  
MacDonald Building  
Suite 300  
344 Edmonton Street  
Winnipeg, Manitoba  
R3B 3L9

Local calls: 983-4020  
Toll free service: 1-800-542-3404  
Fax: 1-204-983-7543

### Saskatchewan

Advisory Services  
Statistics Canada  
Avord Tower, 9th Floor  
2002 Victoria Avenue  
Regina, Saskatchewan  
S4P 0R7

Local calls: 780-5405  
Toll free service: 1-800-667-7164  
Fax: 1-306-780-5403

### Alberta and the Northwest

**Territories**  
Advisory Services  
Statistics Canada  
8th Floor  
Park Square  
10001 Bellamy Hill  
Edmonton, Alberta  
T5J 3B6

Local calls: 495-3027  
Toll free service: 1-800-282-3907  
Fax: 1-403-495-3026  
N.W.T. – Call collect (403) 495-3028

### Southern Alberta

Advisory Services  
Statistics Canada  
First Street Plaza  
Room 401  
138-4th Avenue South East  
Calgary, Alberta  
T2G 4Z6

Local calls: 292-6717  
Toll free service: 1-800-472-9708  
Fax: 1-403-292-4958

### British Columbia and the Yukon

Advisory Services  
Statistics Canada  
Federal Building, Sinclair Centre  
757 West Hastings Street  
Suite 440F  
Vancouver, B.C.  
V6C 3C9

Local calls: 666-3691  
Toll free service: 1-800-663-1551  
(except Atlin, B.C.)  
Fax: 1-604-666-4863  
Yukon and Atlin, B.C.  
Zenith 08913