



# IN·F·O·M·A·T

## A WEEKLY REVIEW

STATISTICS CANADA

STATISTIQUE CANADA

Friday, January 7, 1994

JAN 7 1994

LIBRARY

BIBLIOTHEQUE

### OVERVIEW

#### ■ Lower Crude Oil Prices Push Down Raw Materials Price Index

The Raw Materials Price Index decreased 2.3% in November, due mainly to a steep drop in the mineral fuels index.

#### ■ Industrial Product Price Index Maintains Upward Trend

The Industrial Product Price Index rose for the fifth straight month, by 0.2% in November, as seven major groups of products posted increases.

#### ■ Growth of GDP Minimal in October

Economic growth continued in October: real gross domestic product at factor cost crept up 0.1% after a gain of 0.5% in September and a marginal increase in August.

#### ■ Growth of Average Weekly Earnings Decelerates

Average weekly earnings of Canadian workers rose 1.0% between October 1992 and October 1993, the lowest year-over-year change in 10 years. Seasonally adjusted earnings reached a level of \$560.17.

#### ■ Charitable Donations Increase in 1992

In 1992, nearly 5.5 million Canadians gave \$3.2 billion to charities, an increase of \$92 million or 3% from 1991.

### Lower Crude Oil Prices Push Down Raw Materials Price Index

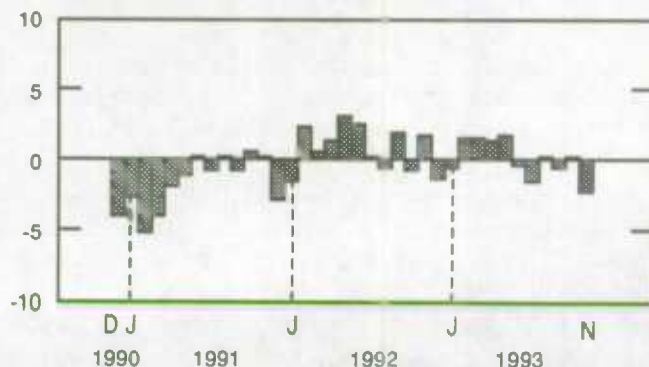
The Raw Materials Price Index (RMPI, 1986=100) stood at 110.0 in November, down 2.3% from its revised October level of 112.6. On a year-over-year basis, the RMPI was down 0.4%, marking the first year-over-year decline since April 1992. Excluding mineral fuels, however, the RMPI stood 9.2% above its level of a year ago.

In November, a 9.8% drop in crude oil prices pushed the mineral fuels index down 8.8%. Higher prices for natural gas (10.6%) only partially offset the decline. The mineral fuels index, which represents almost one-third of the RMPI, was 20.0% below its November 1992 level mainly because of a 21.9% dive in crude oil prices. The drop was moderated slightly by higher prices for natural gas (14.2%) and coal (4.1%).

(continued on page 2)

#### Raw Materials Price Index

% change, previous month



### ... Lower Crude Oil Prices Push Down Raw Materials Price Index

The animals and animal products index, which accounts for more than a quarter of the RMPI, declined 1.3% in November due to a 9.4% drop in prices for hogs. Hog prices, after increasing substantially for most of 1993, have declined in the last two months.

The vegetable products index increased 2.4% in November and stood 8.9% above its year-earlier level. Higher prices for grains and oilseeds were

partly offset by a decline in raw sugar prices. Ferrous material prices rose 1.3%, due mainly to higher prices for iron and steel scrap which were up 32% since January.

After three straight months of declines, wood prices rebounded, rising by 1.1% in November. In comparison with November 1992, the wood index rose 27.8%, due mostly to higher prices for softwood logs (36.3%).

For further information contact Prices Division at (613) 951-9607.

### Industrial Product Price Index Maintains Upward Trend

The Industrial Product Price Index (IPPI, 1986=100) advanced for the fifth straight month, by 0.2% in November. At 113.8, the index was 2.7% above its year-earlier level as all components showed higher prices except petroleum and coal products (-5.3%) and paper and paper products (-4.0%).

Seven major groups of products registered increases while eight declined and six remained unchanged. The increase in the IPPI was largely attributable to a 4.5% rise in the prices of lumber, sawmill and other wood products. This was the fourth consecutive monthly increase as softwood lumber prices continued their rise. Prices for this commodity group were 21.8% higher than in November 1992.

Prices for fruit, vegetable, feed and miscellaneous food products have risen steadily since August 1992. In November, the index rose 0.7% and reached a high of 117.8, largely because of higher prices for feed and canola oil. The index for rubber, leather and plastic fabricated products rose 0.4%, reflecting a 16.2% jump in the price of polystyrene.

These increases were partly offset by falling prices for petroleum and coal products (-1.0%), paper and paper products (-0.6%), and autos, trucks and other transportation equipment (-0.4%). For the latter component, this was the first decline since March 1993, due mainly to the downward change in the value of the U.S. dollar relative to the Canadian dollar.

For further information, order Industry Price Indexes (catalogue number 62-011), or contact Prices Division at (613) 951-9607.

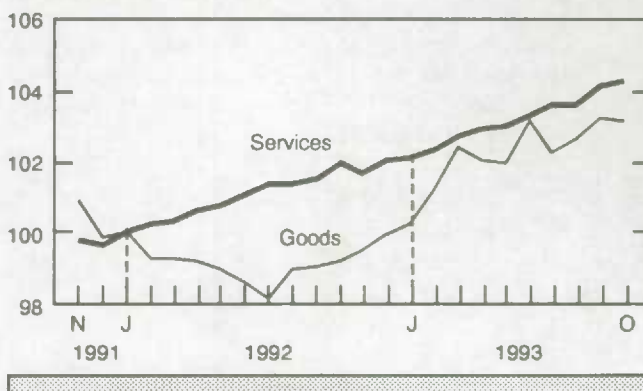
### Growth of GDP Minimal in October

Following an increase of 0.1% in August and a gain of 0.5% in September, real gross domestic product at factor cost grew 0.1% in October. Services production rose 0.2%, equal to its average monthly growth so far in the year. Goods production, however, slipped 0.1% following significant increases in the previous two months.

The gain in services was led by increases in wholesale trade (0.6%), finance, insurance and real estate (0.5%), and transportation and storage services (0.5%). Sales by wholesalers increased for the sixth straight month. In the finance group, the advance was concentrated in mutual funds where assets and output continued to increase rapidly. However, real estate activities fell for a fourth consecutive month as the number of houses for sale declined and as housing resales fell in almost every province.

### Gross Domestic Product Output by Sector

Index (January 1992 = 100)



(continued on page 3)



### ... Growth of GDP Minimal in October

Retail sales edged up by 0.1%, but have remained near the same level for the last four months. A 0.2% decline in output of community, business and personal services, the third decline in the last four months, moderated the increases.

The cutbacks in goods production were concentrated in construction (-0.6%) and in mining (-1.2%). Construction activity decreased for the fifth consecutive month as residential construction fell 0.8% and non-residential construction dropped 0.9%. Mining output declined for the third time in four months as drilling activity slumped 10.5% in October alone.

Manufacturers increased production 0.1% as higher output of durable goods was mostly offset by lower output of non-durable goods. Forestry activity advanced 1.4% after increasing 2.1% in September. Demand abroad for Canadian lumber remained strong in October but was not sufficient to induce an increase in output.

*For further information, order Gross Domestic Product by Industry (catalogue number 15-001) or contact Industry Measures and Analysis Division at (613) 951-9145. (See also "Current Trends" chart on page 6.)*

### Growth of Average Weekly Earnings Decelerates

In October, average weekly earnings of Canadian workers rose 1.0% from the previous year to a seasonally adjusted level of \$560.17. This was the lowest year-over-year increase since the survey began in 1983. The continuing trend of smaller increases in earnings was attributable to lower wage settlements, payroll cuts and a change in the employment mix towards lower-paying industries.

Newfoundland (3.4%), Prince Edward Island (1.8%), British Columbia (1.8%), Nova Scotia (1.4%) and Ontario (1.4%) recorded year-over-year growth rates exceeding the average for Canada. In contrast, Québec (-0.2%), the Yukon (-2.1%) and the Northwest Territories (-2.4%) registered negative year-over-year changes in average weekly earnings.

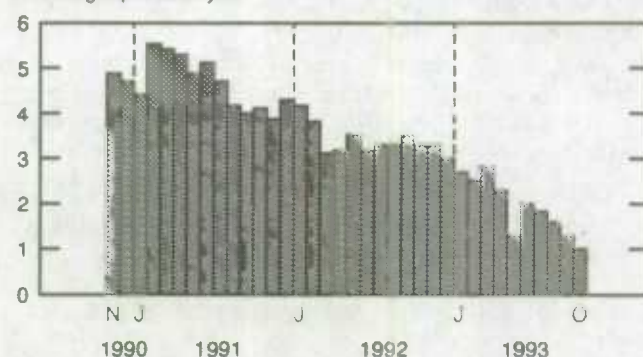
Year-over-year changes in earnings were lowest in accommodation, food and beverage services (-0.5%), business services (-0.4%), and transportation, communications and other utilities (-0.3%). These three industries accounted for 2,029,000 employees in October 1993.

Finance, insurance and real estate (4.7%) and manufacturing (2.5%) showed the largest year-over-year increases. Average weekly earnings stood at \$635.89 and \$676.67, respectively.

Employment remained slightly below 10.0 million in October. Employment gains in health and social services and in manufacturing were offset by declines in construction and retail trade. Payroll employment in construction dropped 1.5% from

### Average Weekly Earnings

% change, previous year



### Note to Users

The Survey of Employment, Payrolls and Hours covers all industries except agriculture, fishing and trapping, religious organizations, private households and defence services.

September, led by declines in trade contracting in Québec, Ontario and Alberta. Total construction employment was down 6.5% from October 1992.

*For further information, order Employment, Earnings and Hours (catalogue number 72-002), or contact Labour Division at (613) 951-4090.*

## Charitable Donations Increase in 1992

Canadians continued to be generous in supporting charities in 1992 as approximately 5.5 million of them donated \$3.2 billion, an increase of \$92 million or 3% from 1991. However, tough economic times may have contributed to the reduction in the number of donors which fell by nearly 22,000 (0.4%).

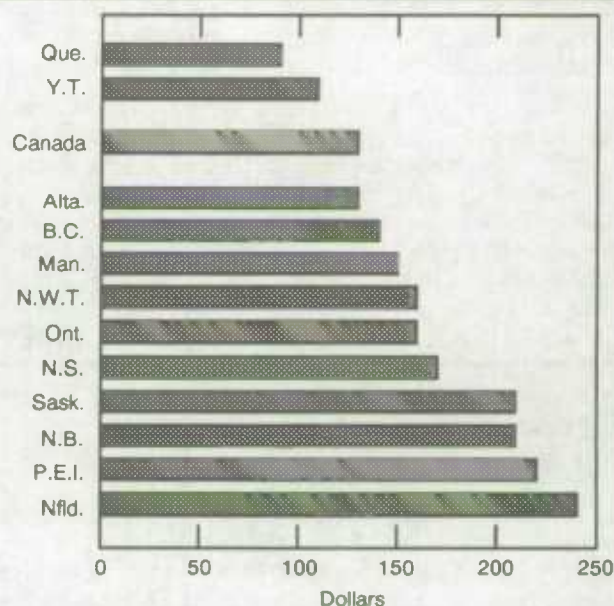
The 1992 Charitable Donors database provides information on contributions made by Canadians where an income tax receipt was provided. These data are available for Canada, the provinces, the territories, as well as for almost 24,000 postal areas.

The average charitable donation was \$586 in 1992 compared to \$567 in 1991. As in 1991, half of the contributors gave \$130 (the median amount) or more. A small number of Canadians contributed very large amounts in 1992, thus inflating the average. The median donation, however, was unaffected by these high contributions.

Once again, Newfoundlanders had the highest median contribution (\$240) for all of Canada while the lowest provincial median donation was in Quebec (\$90). Despite this, Hampstead, a region of greater Montreal, had the highest median donation of all cities (\$1,040).

Canadians aged 55 to 64 gave an average of \$1,500 to charities in 1992, the highest average donation. By comparison, those younger than 35, the category which gave the least, contributed an average of \$300. The age group with the second

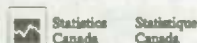
Median amount of charitable donations, 1992



highest average donation was the over-64 age bracket. Members of this group gave an average of \$840 in 1992.

For further information about the 1992 Charitable Donors Database, contact the Small Area and Administrative Data Division at (613) 951-9720.

## NEW FROM STATISTICS CANADA



### SMALL BUSINESS PROFILES

1993 EDITION



Small Business and Special Surveys Division  
Division des petites entreprises et des enquêtes spéciales

### Small Business Profiles, 1993 Edition

Are you thinking of starting up a business? Do you wish to compare your situation with the average of similar small businesses?

The *Small Business Profiles* are comprehensive reports which provide useful insights for potential and actual small and medium businesses. The *profiles* present detailed information on selected operating expenses as a percentage of revenues, balance sheet information, financial ratios and employment data. *Profiles* are available for over 4,000 combinations of industry and province (territory).

To order the *Small Business Profiles*, contact any Statistics Canada Regional Reference Centre. For more information, contact Katherine Blais (tel: 613-951-0822 or Fax: 613-951-1572), Small Business and Special Surveys Division.



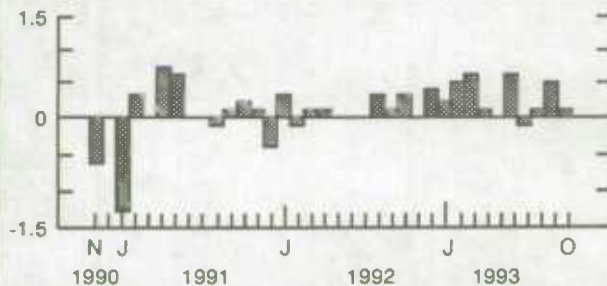
# PUBLICATIONS RELEASED FROM DEC. 24, 1993 TO JAN. 6, 1994

Division/title of publication	Period	Catalogue Number	Price: Issue/Subscription		
			Canada (Cdn.\$)	United States	Other Countries
			US\$		
<b>AGRICULTURE</b>					
The Dairy Review	October 1993	23-001	12.20/122	14.60/146	17.10/171
<b>DEMOGRAPHY</b>					
Quarterly Demographic Statistics	April-June 1993	91-002	7.50/30	9/36	10.50/42
<b>INDUSTRY</b>					
Asphalt Roofing	November 1993	45-001	5/50	6/60	7/70
Cement	November 1993	44-001	5/50	6/60	7/70
Coal and Coke Statistics	October 1993	45-002	10/100	12/120	14/140
Electric Lamps (light bulbs and tubes)	November 1993	43-009	5/50	6/60	7/70
Electric Power Statistics	October 1993	57-001	10/100	12/120	14/140
Gypsum Products	November 1993	44-003	5/50	6/60	7/70
Industrial Chemicals and Synthetic Resins	November 1993	46-002	5.60/56	6.70/67	7.80/78
Rigid Insulating Board (Wood Fibre Products)	November 1993	36-002	5/50	6/60	7/70
Specified Domestic Electrical Appliances	November 1993	43-003	5/50	6/60	7/70
The Sugar Situation	November 1993	32-013	5/50	6/60	7/70
<b>INTERNATIONAL TRADE</b>					
Imports by Commodity	October 1993	65-007	55.10/551	66.10/661	77.10/771
Summary of Canadian International Trade	October 1993	65-001	18.20/182	21.80/218	25.50/255
<b>INVESTMENT AND CAPITAL STOCK</b>					
Building Permits	October 1993	64-001	22.10/221	26.50/265	30.90/309
<b>SERVICES, SCIENCE AND TECHNOLOGY</b>					
Restaurant, Caterer and Tavern Statistics	October 1993	63-011	6.10/61	7.30/73	8.50/85
Science Statistics Service Statistics:	Vol. 26, No. 10				
Scientific and Technological (S & T)	Vol. 17, No. 12	88-001	7.10/71	8.50/85	9.90/99
Activities of Provincial Governments	1985-86 to 1992-93				
Telephone Statistics	October 1993	56-002	8.30/83	10/100	11.60/116
<b>TRANSPORTATION</b>					
Aviation Service Bulletin	Vol. 25, No. 12	51-004	9.30/93	11.20/112	13/130
Canadian Civil Aviation	1992	51-206	36	43	50
Surface and Marine Transport Service Bulletin	Vol. 9, No. 7	50-002	9.40/75	11.25/90	13.15/105

## CURRENT TRENDS

### Gross Domestic Product

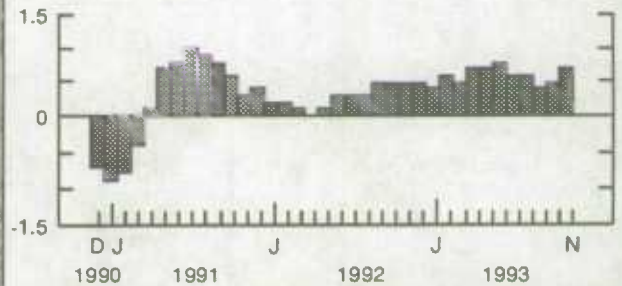
% change,  
previous month



Economic growth continued in October: real gross domestic product at factor cost crept up 0.1% after a gain of 0.5% in September and a marginal increase in August.

### Composite Index

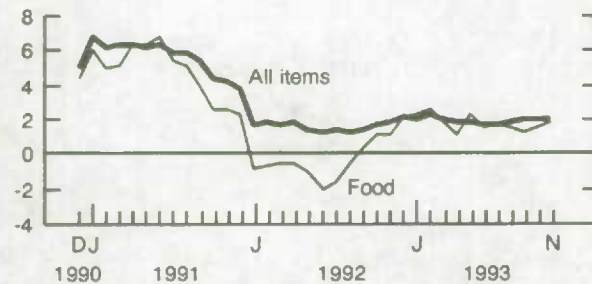
% change,  
previous month



The growth of the composite index accelerated, rising from 0.4% in September to 0.5% in October, and then to 0.7% in November.

### Consumer Price Index

% change,  
previous year



In November, the year-over-year increase in the all-items CPI remained unchanged for the third straight month at 1.9%. The food index rose by 1.7%, up from 1.5% in October.

### Unemployment Rate

%



The unemployment rate slipped from 11.1% in October to 11.0% in November.

### Manufacturing

Billions  
of dollars



Canadian manufacturers' shipments edged up by 0.2% in October to \$26.4 billion. The level of unfilled orders fell 1.4% to \$23.8 billion, the fourth straight monthly decline.

### Merchandise Trade

Billions  
of dollars



In October, seasonally adjusted merchandise exports climbed 3.2% to \$16.1 billion, while imports increased 1.8% to \$14.7 billion.

**Note:** All series are seasonally adjusted except the consumer price index.



## LATEST MONTHLY STATISTICS

	Period	Level	Change Previous Period	Change Previous Year
<b>GENERAL</b>				
Gross Domestic Product (\$ billion, 1986)	October*	521.2	0.1%	2.9%
Composite Leading Indicator (1981 = 100)	November	158.4	0.7%	7.4%
Operating Profits of Enterprises (\$ billion)	3rd Quarter	13.0	-6.9%	23.8%
<b>DOMESTIC DEMAND</b>				
Retail Trade (\$ billion)	October	16.3	0.1%	4.2%
New Motor Vehicle Sales ('000 units)	October	99.9	2.4%	-0.5%
<b>LABOUR</b>				
Employment (millions)	November	12.5	0.5%	1.5%
Unemployment Rate (%)	November	11.0	-0.1	-0.8
Participation Rate (%)	November	65.0	0.1	-0.6
Labour Income (\$ billion)	September	33.4	0.4%	2.8%
Average Weekly Earnings (\$)	October*	560.17	-0.1%	1.0%
<b>INTERNATIONAL TRADE</b>				
Merchandise Exports (\$ billion)	October	16.1	3.2%	15.1%
Merchandise Imports (\$ billion)	October	14.7	1.8%	18.3%
Merchandise Trade Balance (\$ billion)	October	1.41	0.24	-0.17
<b>MANUFACTURING</b>				
Shipments (\$ billion)	October	26.4	0.2%	9.5%
New Orders (\$ billion)	October	26.1	-0.3%	10.2%
Unfilled Orders (\$ billion)	October	23.8	-1.4%	7.9%
Inventory/ Shipments Ratio	October	1.33	0.00	-0.10
Capacity Utilization (%)	3rd Quarter	78.6	0.2	3.1
<b>PRICES</b>				
Consumer Price Index (1986 = 100)	November	131.5	0.5%	1.9%
Industrial Product Price Index (1986 = 100)	November*	113.8	0.2%	2.7%
Raw Materials Price Index (1986 = 100)	November*	110.0	-2.3%	-0.4%
New Housing Price Index (1986 = 100)	October	136.4	-0.1%	1.3%

*Note: All series are seasonally adjusted with the exception of average weekly earnings and the price indexes.*

\* New this week.

## I·N·F·O·M·A·T

### A Weekly Review

Published by the Communications Division Statistics Canada,  
10-N, R.H. Coats Bldg, Ottawa, Ontario K1A 0T6.

Editor: Louise Larouche (613) 951-1197  
Senior Editor: Greg Thomson (613) 951-1187

Catalogue: 11-002E. Price: Canada: \$2.50 per issue, \$125.00  
per year; United States: US\$3.00 per issue, US\$150.00 per year;  
Other Countries: US\$3.50 per issue, US\$175.00. Canadian  
customers please add 7% GST.

To subscribe: send money order or cheque payable to the  
Receiver General for Canada/Publication Sales, Statistics  
Canada, Ottawa, Ontario K1A 0T6. To order by telephone dial:  
1-800-267-6677 from Canada and the United States or 613-  
951-7277 from all other countries.

Published by authority of the Minister responsible for Statistics  
Canada. © Minister of Industry, Science and Technology, 1993.

All rights reserved. No part of this publication may be reproduced,  
stored in a retrieval system or transmitted in any form or by any  
means, electronic, mechanical, photocopying, recording or  
otherwise without prior written permission from Licence Services,  
Marketing Division, Statistics Canada, Ottawa, Ontario, Canada  
K1A 0T6.

The paper used in this publication meets the minimum  
requirements of American National Standard for Information  
Sciences - Permanence of Paper for Printed Library Materials,  
ANSI Z39.48 - 1984.





Statistics Canada

# 1994 Release Dates

## Selected Economic Indicators

Produced by Communications Division (613) 951-0627

Data are available at the time of release from Statistics Canada in *The Daily* in summary form and on **CANSIM** Main Base in greater detail. To order *The Daily* call toll-free 1-800-267-6677 and ask for Catalogue Number 11-001E (\$120/year in Canada, US\$144/year in the United States, US\$168/year in other countries) or contact your nearest Statistics Canada Regional Reference Centre.

The **CANSIM** Main Base Series Directory provides a detailed description of the content of the matrices (MXXX) listed for these economic indicators. For more information call the Dissemination Division 1-613-951-8200 or contact your nearest Statistics Canada Regional Reference Centre.

### Consumer Price Index (CPI)

M2201-2230

#### Data for:

December 1993  
January 1994  
February 1994  
March 1994  
April 1994  
May 1994  
June 1994  
July 1994  
August 1994  
September 1994  
October 1994  
November 1994  
December 1994

#### Release Date:

January 21, 1994  
February 16, 1994  
March 17, 1994  
April 15, 1994  
May 18, 1994  
June 17, 1994  
July 15, 1994  
August 19, 1994  
September 15, 1994  
October 14, 1994  
November 22, 1994  
December 16, 1994  
January 20, 1995

### Labour Force Survey (LFS)

M2074, 2075,  
2078-2107

#### Data for:

December 1993  
January 1994  
February 1994  
March 1994  
April 1994  
May 1994  
June 1994  
July 1994  
August 1994  
September 1994  
October 1994  
November 1994  
December 1994  
January 1995

#### Release Date:

January 7, 1994  
February 4, 1994  
March 11, 1994  
April 8, 1994  
May 6, 1994  
June 10, 1994  
July 8, 1994  
August 5, 1994  
September 9, 1994  
October 7, 1994  
November 4, 1994  
December 2, 1994  
January 6, 1995  
February 10, 1995

### Canadian International Trade

M3620-3629, 3651,  
3685-3713, 3718,  
3719, 3720, 3887-3913

#### Data for:

November 1993  
December 1993  
January 1994  
February 1994  
March 1994  
April 1994  
May 1994  
June 1994  
July 1994  
August 1994  
September 1994  
October 1994  
November 1994  
December 1994

#### Release Date:

January 19, 1994  
February 17, 1994  
March 22, 1994  
April 19, 1994  
May 19, 1994  
June 21, 1994  
July 19, 1994  
August 18, 1994  
September 20, 1994  
October 19, 1994  
November 18, 1994  
December 20, 1994  
January 19, 1995  
February 17, 1995

### Field Crop Reporting Series

#### Data for:

December 31 Grain Stocks  
March Seeding Intentions  
March 31 Grain Stocks  
Seeded Area, Principal Field Crops  
July 31 Crop Production Estimates  
July 31 Grain Stocks  
September Crop Production Estimates  
November Crop Production Estimates

#### Release Date:

February 2, 1994  
April 28, 1994  
May 12, 1994  
June 30, 1994  
August 24, 1994  
September 7, 1994  
October 6, 1994  
November 30, 1994



Statistics Canada  
Statistique Canada

Canada



<b>Income and Expenditure Accounts</b>	M6701-6702, 6704-6707, 6709-6716, 6718, 6720-6722, 6724-6727, 6729-6736, 6738, 6740, 6828-6839, 6846, 7420-7432
--	---

<b>Data for:</b>	<b>Release Date:</b>
Oct.-Dec., 1993	March 1, 1994
Jan.-Mar., 1994	June 10, 1994
April-June, 1994	August 31, 1994
July-Sept., 1994	November 30, 1994
Oct.-Dec., 1994	February 28, 1995

<b>Real Gross Domestic Product At Factor Cost by Industry</b>	M4671-4674
---	------------

<b>Data for:</b>	<b>Release Date:</b>
November 1993	January 31, 1994
December 1993	March 1, 1994
January 1994	March 31, 1994
February 1994	April 29, 1994
March 1994	May 31, 1994
April 1994	June 30, 1994
May 1994	July 29, 1994
June 1994	August 31, 1994
July 1994	September 30, 1994
August 1994	October 31, 1994
September 1994	November 30, 1994
October 1994	December 23, 1994
November 1994	January 31, 1995
December 1994	February 28, 1995

<b>Financial Flow Accounts</b>	M701-741, 743, 750
--------------------------------	--------------------

<b>Data for:</b>	<b>Release Date:</b>
Oct.-Dec., 1993	March 1, 1994
Jan.-Mar., 1994	June 10, 1994
April-June, 1994	August 31, 1994
July-Sept., 1994	November 30, 1994
Oct.-Dec., 1994	February 28, 1995

<b>Composite Index</b>	M191
------------------------	------

<b>Data for:</b>	<b>Release Date:</b>
December 1993	January 19, 1994
January 1994	February 15, 1994
February 1994	March 17, 1994
March 1994	April 19, 1994
April 1994	May 17, 1994
May 1994	June 16, 1994
June 1994	July 19, 1994
July 1994	August 16, 1994
August 1994	September 15, 1994
September 1994	October 18, 1994
October 1994	November 16, 1994
November 1994	December 15, 1994

<b>Balance of International Payments</b>	M2323-2329 2331-2339, 2343-2349 2353-2355, 2357, 3623-3625
--	--

<b>Data for:</b>	<b>Release Date:</b>
Oct.-Dec., 1993	March 1, 1994
Jan.-Mar., 1994	June 10, 1994
April-June, 1994	August 31, 1994
July-Sept., 1994	November 30, 1994
Oct.-Dec., 1994	February 28, 1995

<b>Canada's International Transactions in Securities</b>	M2330
--	-------

<b>Data for:</b>	<b>Release Date:</b>
November 1993	January 25, 1994
December 1993	February 24, 1994
January 1994	March 24, 1994
February 1994	April 25, 1994
March 1994	May 25, 1994
April 1994	June 23, 1994
May 1994	July 25, 1994
June 1994	August 25, 1994
July 1994	September 26, 1994
August 1994	October 25, 1994
September 1994	November 24, 1994
October 1994	December 22, 1994
November 1994	January 25, 1995
December 1994	February 23, 1995

<b>Private and Public Investment in Canada</b>
--

<b>Data for:</b>	<b>Release Date:</b>
1992 Actual,	
1993 Preliminary Actual and	
1994 Intentions	February 28, 1994
1994 Revised Intentions	July 25, 1994

<b>Building Permits</b>	M80, 129, 137, 443, 989-992, 994, 995, 4073
-------------------------	--

<b>Data for:</b>	<b>Release Date:</b>
November 1993	January 18, 1994
December 1993	February 15, 1994
January 1994	March 15, 1994
February 1994	April 18, 1994
March 1994	May 16, 1994
April 1994	June 15, 1994
May 1994	July 18, 1994
June 1994	August 16, 1994
July 1994	September 16, 1994
August 1994	October 18, 1994
September 1994	November 16, 1994
October 1994	December 15, 1994

---

<b>Retail Trade</b>	M2299, 2398-2417, 2420
---------------------	------------------------

---

<b>Data for:</b>	<b>Release Date:</b>
November 1993	January 24, 1994
December 1993	February 21, 1994
January 1994	March 21, 1994
February 1994	April 22, 1994
March 1994	May 19, 1994
April 1994	June 20, 1994
May 1994	July 20, 1994
June 1994	August 19, 1994
July 1994	September 20, 1994
August 1994	October 20, 1994
September 1994	November 18, 1994
October 1994	December 20, 1994

---

<b>Monthly Survey of Manufacturing</b>	M9550-9580
--	------------

---

<b>Data for:</b>	<b>Release Date:</b>
November 1993	January 20, 1994
December 1993	February 17, 1994
January 1994	March 16, 1994
February 1994	April 19, 1994
March 1994	May 17, 1994
April 1994	June 28, 1994
May 1994	July 18, 1994
June 1994	August 17, 1994
July 1994	September 19, 1994
August 1994	October 18, 1994
September 1994	November 17, 1994
October 1994	December 15, 1994

---

<b>New Motor Vehicle Sales</b>	M64
--------------------------------	-----

---

<b>Data for:</b>	<b>Release Date:</b>
November 1993	January 10, 1994
December 1993	February 9, 1994
January 1994	March 10, 1994
February 1994	April 11, 1994
March 1994	May 16, 1994
April 1994	June 9, 1994
May 1994	July 11, 1994
June 1994	August 9, 1994
July 1994	September 9, 1994
August 1994	October 11, 1994
September 1994	November 9, 1994
October 1994	December 9, 1994

---

<b>Employment, Earnings, and Hours</b>	M4285-4466, 9438-9452, 9639-9911
--	----------------------------------

---

<b>Data for:</b>	<b>Release Date:</b>
November 1993	January 28, 1994
December 1993	February 28, 1994
January 1994	March 30, 1994
February 1994	April 28, 1994
March 1994	May 30, 1994
April 1994	June 29, 1994
May 1994	July 28, 1994
June 1994	August 29, 1994
July 1994	September 29, 1994
August 1994	October 28, 1994
September 1994	November 29, 1994
October 1994	December 23, 1994

---

<b>Unemployment Insurance Statistics</b>	M26, 5700-5707, 5708-5717, 5735, 5736
--	---------------------------------------

---

<b>Data for:</b>	<b>Release Date:</b>
November 1993	January 26, 1994
December 1993	February 23, 1994
January 1994	March 30, 1994
February 1994	April 27, 1994
March 1994	May 25, 1994
April 1994	June 29, 1994
May 1994	July 27, 1994
June 1994	August 30, 1994
July 1994	September 28, 1994
August 1994	October 26, 1994
September 1994	November 29, 1994
October 1994	December 22, 1994

---

<b>Help-wanted Index</b>	M105
--------------------------	------

---

<b>Data for:</b>	<b>Release Date:</b>
December 1993	January 6, 1994
January 1994	February 3, 1994
February 1994	March 10, 1994
March 1994	April 7, 1994
April 1994	May 5, 1994
May 1994	June 9, 1994
June 1994	July 7, 1994
July 1994	August 4, 1994
August 1994	September 8, 1994
September 1994	October 6, 1994
October 1994	November 3, 1994
November 1994	December 1, 1994

---



---

<b>Business Conditions Survey, Canadian Manufacturing Industries</b>	<b>M2843-2845</b>
--	-------------------

---

<b>Data for:</b> January 1994 April 1994 July 1994 October 1994	<b>Release Date:</b> February 2, 1994 May 3, 1994 August 3, 1994 November 2, 1994
---	---

---

<b>Travel Between Canada and Other Countries</b>	<b>M2661-2697</b>
--	-------------------

---

<b>Data for:</b> November 1993 December 1993 January 1994 February 1994 March 1994 April 1994 May 1994 June 1994 July 1994 August 1994 September 1994 October 1994	<b>Release Date:</b> January 14, 1994 February 11, 1994 March 11, 1994 April 15, 1994 May 13, 1994 June 14, 1994 July 15, 1994 August 12, 1994 September 16, 1994 October 14, 1994 November 15, 1994 December 16, 1994
--	--

---

<b>Wholesale Trade</b>	<b>M59, 61, 648, 649</b>
----------------------------	--------------------------

---

<b>Data for:</b> November 1993 December 1993 January 1994 February 1994 March 1994 April 1994 May 1994 June 1994 July 1994 August 1994 September 1994 October 1994	<b>Release Date:</b> January 21, 1994 February 22, 1994 March 22, 1994 April 25, 1994 May 20, 1994 June 21, 1994 July 21, 1994 August 22, 1994 September 21, 1994 October 21, 1994 November 21, 1994 December 21, 1994
--	--

---

<b>New Housing Price Index</b>	<b>M2032</b>
------------------------------------	--------------

---

<b>Data for:</b> November 1993 December 1993 January 1994 February 1994 March 1994 April 1994 May 1994 June 1994 July 1994 August 1994 September 1994 October 1994	<b>Release Date:</b> January 11, 1994 February 11, 1994 March 11, 1994 April 11, 1994 May 11, 1994 June 13, 1994 July 11, 1994 August 10, 1994 September 9, 1994 October 11, 1994 November 9, 1994 December 9, 1994
--	---

---

<b>International Travel Account</b>
-------------------------------------

---

<b>Data for:</b> Oct.-Dec., 1993 Jan.-Mar., 1994 April-June, 1994 July-Sept., 1994	<b>Release Date:</b> February 25, 1994 May 27, 1994 August 26, 1994 November 25, 1994
--	---

---

<b>Industrial Capacity Utilization Rates</b>	<b>M3140</b>
--	--------------

---

<b>Data for:</b> Oct.-Dec., 1993 Jan.-Mar., 1994 April-June, 1994 July-Sept., 1994	<b>Release Date:</b> March 3, 1994 June 2, 1994 September 2, 1994 December 2, 1994
--	--

---

<b>Industrial Product Price Index and Raw Materials Price Index</b>	<b>M2000-2008 M2009</b>
---	-----------------------------

---

<b>Data for:</b> November 1993 December 1993 January 1994 February 1994 March 1994 April 1994 May 1994 June 1994 July 1994 August 1994 September 1994 October 1994 November 1994	<b>Release Date:</b> January 5, 1994 January 27, 1994 February 25, 1994 March 29, 1994 April 27, 1994 May 27, 1994 June 28, 1994 July 27, 1994 August 26, 1994 September 28, 1994 October 27, 1994 November 25, 1994 January 4, 1995
---	---

STATISTICS CANADA LIBRARY  
BIBLIOTHEQUE STATISTIQUE CANADA



1010156637