

23-001

C12
MAR 31 1949

Published by Authority of the Rt. Hon. C. D. Howe, M.P., Minister of Trade and Commerce

DOMINION BUREAU OF STATISTICS

MONTHLY DAIRY REVIEW OF CANADA 1949

Dominion Statistician:
Director, Agriculture Division
In Charge of Dairying Statistics

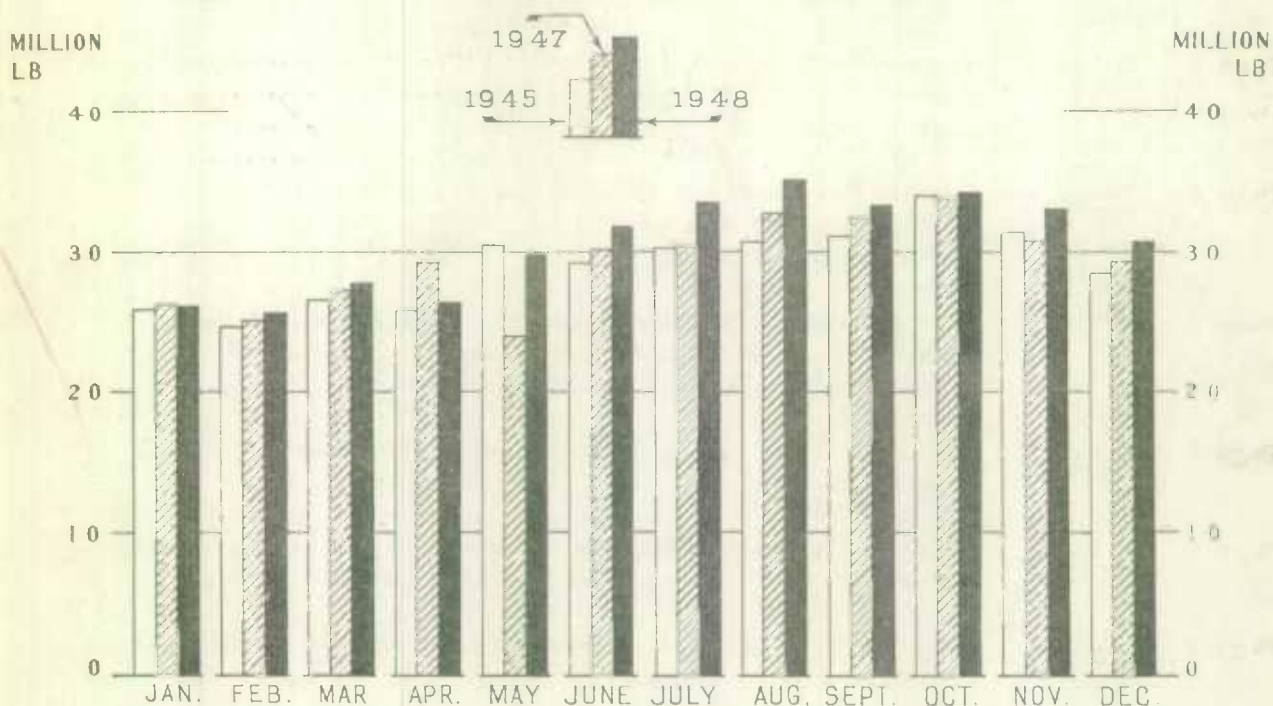
Herbert Marshall
C. V. Parker
P. H. Ferguson

Volume No. X, Report No. 2

(FEBRUARY)

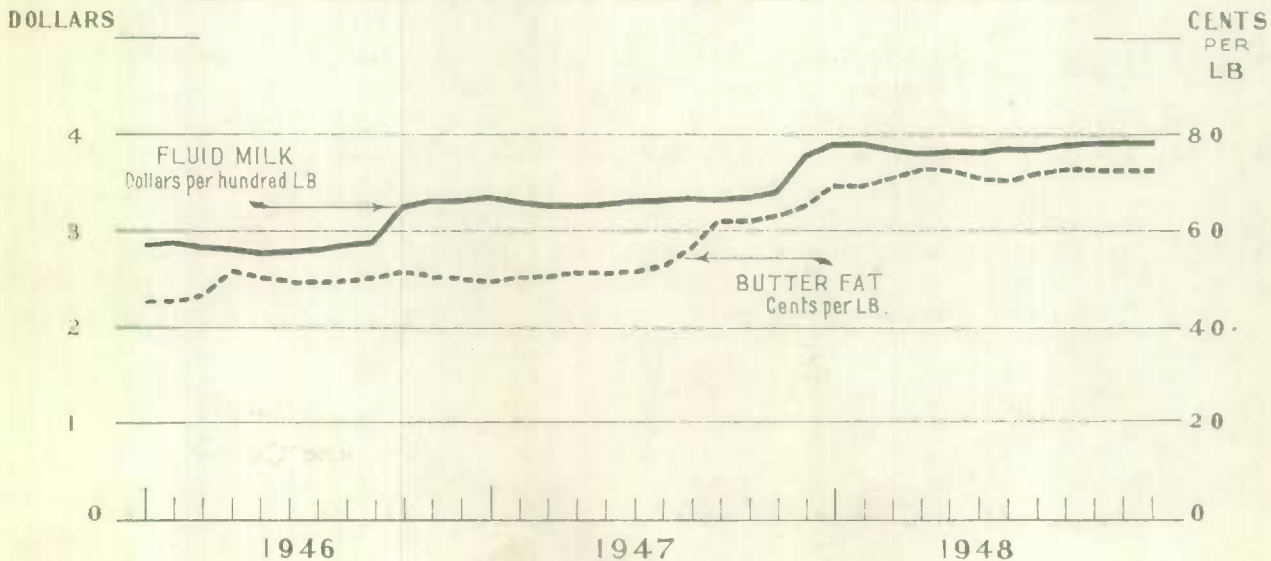
Published March 28, 1949.

DOMESTIC DISAPPEARANCE OF BUTTER ^{*}



* Includes Creamery, Dairy and whey Butter

FARM PRICES OF FLUID MILK AND BUTTER FAT



Price: \$1.00 a year.

C O N T E N T S

Page 1	<u>Summary</u>	-The Dairy Position in February
Page 3	<u>Table 1</u>	-The Butter Position in Canada: Production and Disappearance, January , and January-February, 1937 to 1949. <i>February</i>
Page 4	<u>Table 2</u>	-The Cheese Position in Canada: Production and Disappearance, January , and January-February, 1937 to 1949. <i>February</i>
Page 5	<u>Table 3</u>	-Concentrated Milk Products and Ice Cream: Production and Domestic Disappearance, January and January-February, 1937 to 1949. <i>February</i>
Page 6	<u>Table 4</u>	-Concentrated Whole Milk Products: Production, Exports, Imports and Total Supply, February and January-February, 1937 to 1949.
Page 7	<u>Table 5</u>	-Concentrated Milk By-Products: Production, Exports, Imports and Domestic Disappearance, February and January-February, 1937 to 1949.
Page 8	<u>Table 6</u>	-Production of Dairy Butter and Whey Butter in Canada by Provinces, January, 1947, 1948 and 1949.
Page 8	<u>Table 7</u>	-Supply and Disappearance of Creamery Butter in Canada October to February, 1947-48 and 1948-49.
Page 9	<u>Table 8</u>	-Utilization of Milk in Percentages of the Total Milk Production in Canada, by Provinces, January, 1948 and 1949.
Page 10	<u>Table 9A</u>	-Milk Production and Utilization in Canada, by Provinces, January, 1947, 1948 and 1949.
Page 11	<u>Table 9B</u>	-Milk Production and Utilization in Canada, by Provinces, January, 1947, 1948 and 1949.
Page 12	<u>Table 10</u>	-Farm Income from Dairying and Price Averages per Hundred Pounds of Milk.
Page 13	<u>Table 11</u>	-Mean Temperatures and Total Precipitation at Twenty-One Stations in Canada, December 1947 and 1948, and January and February, 1948 and 1949.

THE DAIRY POSITION IN FEBRUARY

Domestic Disappearance: The domestic disappearance of creamery butter during the month of February amounted to approximately $17\frac{1}{4}$ million pounds a decline of $16\frac{1}{4}$ per cent as compared with the same month last year. In the month of January, (the last month for which complete statistics are available), the domestic disappearance of butter, including dairy and whey butter, amounted to 25 million pounds, which represented a decline of 1 million pounds as compared with January, 1948. On a per capita basis the domestic disappearance in January amounted to 1.92 pounds.

Butter Production: Creamery butter production in the month of February, as previously reported in the "Monthly Report of Dairy Factory Production", amounted to $8\frac{1}{2}$ million pounds, $\frac{1}{2}$ million pounds more than that produced in the same month of the previous year. Dairy butter production in January was 4 million pounds, and total butter, including creamery, dairy and whey butter, was $13\frac{5}{8}$ million pounds, a decline of approximately 82 thousand pounds from January, 1948.

Stock Holdings: Stock holdings of creamery butter on February 1 amounted to $27\frac{3}{4}$ million pounds, representing a decline of about 26 per cent from the first of last month and $12\frac{1}{2}$ per cent from the same date last year. Total stocks of butter in storage and transit on March 1, (including creamery, dairy and whey butter) was nearly 19 million pounds, approximately the same as that reported at the same date a year ago. The total supply of creamery butter in February (represented by stocks at the beginning plus butter produced during the month) was 40 million pounds, $25\frac{3}{4}$ per cent below that of January, 1949, and $8\frac{3}{4}$ per cent less than February, 1948.

Butter Prices at Montreal: Butter prices at Montreal based on quotations of the Canadian Commodity Exchange for first grade solids, averaged $68\frac{1}{2}$ cents per pound in February as against $67\frac{1}{2}$ cents in the same month last year.

Cheese Production: The cheddar cheese made of a little more than $\frac{1}{2}$ million pounds represented a reduction of over $\frac{1}{4}$ million pounds as compared with that produced in the same month of the previous year.

Cheese Prices at Montreal: Western cheese sold for domestic use showed a price average of $32\frac{1}{4}$ cents per pound as compared with $36\frac{1}{4}$ cents per pound in February, 1948.

Concentrated Milk Products: The total quantity of concentrated milk products manufactured in February was $1\frac{1}{2}$ million pounds. Compared with the same month of the previous year this represented an increase of $2\frac{1}{4}$ million pounds. Concentrated whole milk products advanced $1\frac{1}{2}$ million pounds while milk by-products registered an increase of approximately $\frac{3}{4}$ of a million pounds as compared with February, 1948. Evaporated milk, one of the most important whole milk products showed an increase of almost $\frac{1}{2}$ million pounds and the production of skim milk powder, the principal milk by-product, was approximately $\frac{3}{4}$ million pounds above that of the same month last year.

Ice Cream: The quantity of ice cream manufactured in February, 1949, was slightly more than 1 million gallons, a gain of 18 thousand gallons as compared with that manufactured in the same month of 1948. Detailed figures on the production of these and other factory products will be found in the "Monthly Report of Dairy Factory Production".

Farm Milk Production: The quantity of milk produced on farms in the month of January amounted to 901,702,000 pounds or approximately $1\frac{3}{4}$ million pounds less than that produced in the same month of the previous year. Factory products which utilized $31\frac{1}{2}$ per cent of the total output advanced almost 8 per cent above that of the same month last year.

Fluid Sales: Sales of milk and cream in January (the latter expressed as milk), amounted to 349,210,000 pounds, an increase of approximately 1 million pounds in comparison with those of January, 1948. Fluid milk which represented $32\frac{1}{2}$ per cent of the total milk production advanced one-half of one per cent from last year, while fluid cream sales representing approximately $6\frac{1}{2}$ per cent of the total milk supply, declined almost 1 per cent from January, 1948.

Farm Income: The estimated farm income from the sale of dairy products amounted to \$21,057,000 in January, 1949, in comparison with \$20,546,000 a year earlier. Slightly higher prices per unit were responsible for this advance, the weighted average price per hundred pounds of milk being \$3.23 as compared with \$3.16 in the same month of 1948. The upward movement in prices applied to all products except cheese milk. Milk used in ice cream showed the greatest advance being 21 cents per hundred above that of January, 1948, while combined sales of fluid milk and cream increased 9 cents and 5 cents, respectively. Butter-fat used in the production of creamery butter advanced from 70.9 to 72 cents and dairy butter moved up from 65.3 cents to 68.5 cents per pound. Milk used in concentration which averaged \$3.18 per hundred last year advanced to \$3.34 in January, 1949.

Production Conditions on Farms: The month of February was quite favourable for dairy production, particularly in the Eastern Provinces where the weather was comparatively mild, with very little snow. Heavy falls of snow were reported in the Maritime Provinces toward the end of the month, but with the exception of northern areas, farmers in the Central Provinces were able to make regular deliveries of milk and cream to factories with little or no road difficulties. Quite cold weather prevailed in most of Western Canada throughout the month of February, and several heavy snow storms filled up the roads making it difficult for farmers to truck their produce to market. At Melfort, Saskatchewan, sub-zero temperatures of 13 degrees or more were recorded in nineteen days during the month. Heavy falls of snow were recorded in British Columbia. At the Dominion Experimental Station at Agassiz in the Fraser Valley area the total precipitation, most of which came in the form of snow, was the third highest in fifty-six years.

Feed supplies are quite plentiful on farms throughout the Dominion and there is no indication that any shortage is likely to develop. The hay is feeding out well and farmers are able to purchase sufficient supplies of mill feeds and concentrates, although the prices are slightly above those of a year ago. Surplus supplies of good quality hay are available in some sections and farmers are finding it necessary to accept from \$5 to \$10 a ton less than last year.

Owing to favourable weather conditions and an ample feed supply, dairy cattle are in much better condition than they were a year ago. This is reflected in the milk production per cow, based on those actually milked, showing an increase in both January and February as compared with the same month last year. Observers confirm this situation and believe that the over-all production of milk during the first quarter of 1949 will exceed that of the same period in 1948. The quantity of milk produced in future months, however, will probably depend to a great extent on butter-fat prices and on the availability of farm labour.

Table 1. - THE BUTTER POSITION IN CANADA

February, and January-February, 1937 to 1949

Year	Creamery Butter		Dairy Butter ^{1/}		Total Butter ^{2/}	
	February	Jan.-Feb.	February	Jan.-Feb.	February	Jan.-Feb.
PRODUCTION						
	'000 lb.	'000 lb.	'000 lb.	'000 lb.	'000 lb.	'000 lb.
1937	7,628	16,578	7,843	15,213	15,511	31,877
1938	7,611	15,980	7,585	14,758	15,236	30,824
1939	8,473	18,279	7,297	14,215	15,810	32,580
1940	9,156	19,618	7,053	13,732	16,253	33,445
1941	9,966	21,700	6,946	13,505	16,959	35,305
1942	9,336	20,064	6,584	12,811	15,980	33,004
1943	11,875	24,995	4,610	9,060	16,511	34,114
1944	10,980	21,862	4,693	9,034	15,713	30,981
1945	10,605	22,027	4,461	8,668	15,117	30,802
1946	8,680	18,309	4,592	8,960	13,307	27,346
1947	8,692	18,490	4,711	9,225	13,437	27,788
1948	8,026	16,983	5,121	10,016	13,171	27,050
1949	8,433	18,129	-	-	-	-
DOMESTIC DISAPPEARANCE IN POUNDS PER CAPITA						
1937	1.55	3.02	.72	1.39	2.27	4.42
1938	1.48	3.08	.68	1.33	2.16	4.42
1939	1.57	3.18	.66	1.28	2.23	4.47
1940	1.67	3.32	.62	1.20	2.30	4.54
1941	1.67	3.25	.61	1.19	2.28	4.45
1942	1.81	3.70	.58	1.12	2.40	4.84
1943	1.27	3.09	.41	.80	1.68	3.89
1944	2.05	4.10	.41	.79	2.47	4.91
1945	1.72	3.56	.39	.75	2.11	4.32
1946	1.74	3.59	.37	.73	2.12	4.34
1947	1.61	3.32	.37	.73	1.99	4.07
1948	1.60	3.24	.40	.78	2.00	4.02
1949	1.32	2.92	.28	.59	1.00	3.50
FEBRUARY MAKE, 1937 TO 1949, EXPRESSED AS INDEXES OF THE SAME MONTH IN 1939 AND 1948 ^{3/}						
	1939	1948	1939	1948	1939	1948
	%	%	%	%	%	%
1937	90.0	95.0	107.5	153.2	98.1	117.8
1938	89.8	94.8	103.9	148.1	96.4	115.7
1939	100.0	105.6	100.0	142.5	100.0	120.0
1940	108.1	114.1	96.7	137.7	102.8	123.4
1941	117.6	124.2	95.2	135.6	107.3	128.8
1942	110.2	116.3	90.2	128.6	101.1	121.3
1943	140.2	148.0	63.2	90.0	104.4	125.4
1944	129.6	136.8	64.3	91.6	99.4	119.3
1945	125.2	132.1	61.1	87.1	95.6	114.8
1946	102.4	108.1	62.9	89.7	84.2	101.0
1947	102.6	108.3	64.6	92.0	85.0	102.0
1948	94.7	100.0	70.2	100.0	83.3	100.0
1949	99.5	105.1	50.5	72.0	76.8	92.1

1/ Data for February, 1949 are preliminary; revisions for January appear on Table 6.
 2/ Includes Whey Butter amounting to 23,900 pounds in February, 1948 and 16,600 pounds in February, 1949. 3/ Note the base index in each column is shown as 100.

Table 3 - CONCENTRATED MILK PRODUCTS AND ICE CREAM

Production and Domestic Disappearance in Canada.

February, and January - February, 1937 to 1949.

Year	Whole Milk Products		Milk By-Products		Ice Cream	
	February	Jan.-Feb.	February	Jan.-Feb.	February	Jan.-Feb.
	PRODUCTION					
	'000 lb.	'000 lb.	'000 lb.	'000 lb.	'000 gal.	'000 gal.
1937	5,086	10,197	1,349	3,119	-	-
1938	6,497	13,448	1,463	3,163	-	-
1939	4,276	9,456	1,815	3,940	431	794
1940	7,481	15,254	1,806	3,875	527	971
1941	10,116	20,305	1,759	3,963	673	1,244
1942	9,407	18,173	1,880	4,030	703	1,318
1943	9,110	19,466	1,705	3,456	712	1,318
1944	8,671	18,947	1,938	3,485	783	1,621
1945	10,298	22,820	2,338	4,693	769	1,564
1946	9,641	19,120	1,927	4,338	662	1,465
1947	10,344	20,983	2,896	6,132	628	1,392
1948	10,742	21,202	2,326	4,848	1,002	2,015
1949	12,241	24,465	3,206	7,435	1,020	2,016

DOMESTIC DISAPPEARANCE IN POUNDS PER CAPITA

1937	.55	1.08	.15	.31	-	-
1938	.56	1.16	.15	.30	-	-
1939	.79	1.35	.17	.38	.04	.07
1940	.54	1.36	.23	.50	.05	.09
1941	.59	1.42	.21	.49	.06	.11
1942	.87	1.87	.24	.42	.06	.11
1943	1.02	1.92	.22	.39	.06	.11
1944	.79	1.60	.19	.38	.07	.14
1945	1.81	3.09	.24	.46	.07	.14
1946	1.14	2.26	.19	.45	.05	.12
1947	.96	2.08	.26	.52	.05	.11
1948	.97	1.86	.20	.48	.08	.16
1949	.88	1.93	.22	.55	.08	.16

FEBRUARY MAKE, 1937 TO 1949, EXPRESSED AS INDEXES OF THE SAME MONTH IN 1939 AND 1948^{1/}

	1939	1948	1939	1948	1939	1948
	%	%	%	%	%	%
1937	118.9	47.3	74.3	58.0	-	-
1938	151.9	60.5	80.6	62.9	-	-
1939	100.0	39.8	100.0	78.0	100.0	43.0
1940	175.0	69.6	99.5	77.6	122.3	52.6
1941	236.6	94.2	96.9	75.6	156.1	67.2
1942	220.0	87.6	103.6	80.8	163.1	70.2
1943	213.0	84.8	93.9	73.3	165.2	71.1
1944	202.8	80.7	106.8	83.3	181.7	78.1
1945	240.8	95.9	128.8	100.5	178.4	76.7
1946	225.5	89.8	106.2	82.8	153.6	66.1
1947	241.9	96.3	159.6	124.5	145.7	62.7
1948	251.2	100.0	128.2	100.0	232.5	100.0
1949	286.3	114.0	176.6	137.8	236.7	101.8

^{1/} Note that base index in each column is shown as 100.

Table 4 - CONCENTRATED WHOLE MILK PRODUCTS

Production in Canada, Exports and Imports of Principal Products
February, and January-February, 1937 to 1949

Year	Evaporated Whole Milk		Condensed Whole Milk		Whole Milk Powder	
	February	Jan.-Feb.	February	Jan.-Feb.	February	Jan.-Feb.
PRODUCTION						
	'000 lb.	'000 lb.	'000 lb.	'000 lb.	'000 lb.	'000 lb.
1937	4,101	8,284	663	1,259	212	425
1938	5,360	11,185	570	1,177	429	806
1939	3,156	7,294	564	1,138	333	572
1940	6,495	13,289	512	881	317	769
1941	8,896	17,294	696	2,000	434	812
1942	7,914	14,917	826	1,862	562	1,174
1943	7,042	15,094	1,245	2,827	765	1,432
1944	6,329	14,791	1,429	2,358	847	1,653
1945	7,271	16,982	1,941	3,621	917	1,898
1946	7,784	15,308	1,117	2,384	593	1,148
1947	7,624	15,755	1,634	2,975	887	1,944
1948	8,884	17,109	1,022	2,327	651	1,405
1949	9,275	18,271	1,994	4,126	720	1,773
EXPORTS						
1937	798	1,462	116	289	201	395
1938	1,457	2,838	237	544	304	663
1939	746	1,131	97	189	433	815
1940	934	2,435	663	726	306	709
1941	4,331	8,818	1,423	1,591	536	754
1942	4,864	8,372	231	1,004	146	318
1943	2,085	3,460	954	3,054	255	407
1944	2,252	3,919	596	1,896	57	132
1945	3,860	11,491	940	2,709	140	196
1946	895	4,545	772	1,403	331	406
1947	520	1,421	846	2,131	87	212
1948	564	1,316	495	2,095	128	625
1949	875	2,377	1,787	3,548	529	752
TOTAL SUPPLY		STOCKS, MAR. 1	TOTAL SUPPLY	STOCKS, MAR. 1	IMPORTS	
1937	12,911	6,959	1,149	392	90	98
1938	14,151	7,454	1,039	345	174	219
1939	16,587	8,060	1,584	772	-	8
1940	15,596	8,683	1,047	393	(1)	1
1941	23,818	12,703	1,447	468	51	51
1942	24,051	10,215	2,117	1,329	-	18
1943	20,665	8,588	2,130	508	1	1
1944	18,317	8,905	2,759	1,126	-	1
1945	37,044	14,349	5,314	2,957	-	1
1946	22,772	9,731	3,310	1,312	1	1
1947	24,515	14,083	4,023	2,096	1	1
1948	14,637	3,893	3,596	1,907	1	1
1949	34,040	12,598(3)	4,192	2,501	(2)	(2)

Note - Supply data which appear in the first and third columns includes stocks at the beginning of the month, plus production and imports during the month. (1) Less than 500 lbs. (2) Not available on date of publication. (3) Stocks in the hands of wholesalers not included in data for March 1, 1949.

Table 5. - CONCENTRATED MILK BY-PRODUCTS

Production in Canada, Exports and Imports of Principal Products
February, and January-February, 1937 to 1949.

Year	Skimmilk Powder		Condensed Skimmilk		Casein	
	February	Jan.-Feb.	February	Jan.-Feb.	February	Jan.-Feb.
PRODUCTION						
	'000 lb.	'000 lb.	'000 lb.	'000 lb.	'000 lb.	'000 lb.
1937	817	1,910	306	617	66	164
1938	950	2,015	285	557	33	72
1939	1,318	2,843	147	315	112	205
1940	1,306	2,797	258	523	17	81
1941	1,257	2,750	234	623	26	84
1942	1,176	2,544	415	859	82	162
1943	1,077	2,101	212	437	79	151
1944	1,253	2,063	200	371	53	95
1945	1,530	3,128	300	493	87	213
1946	1,429	3,048	137	310	53	113
1947	1,700	3,676	255	576	154	332
1948	1,290	2,698	323	645	79	194
1949	2,116	5,054	80	292	124	235
EXPORTS						
1937	67	132	-	-	14	17
1938	101	221	-	-	4	21
1939	341	546	-	-	16	76
1940	62	103	-	-	27	345
1941	21	24	-	-	25	69
1942	28	60	-	-	76	105
1943	43	43	-	-	2	12
1944	-	-	-	-	173	285
1945	-	-	-	-	(3)	10
1946	2	134	-	-	(3)	81
1947	445	821	-	-	90	90
1948	1,248	1,767	-	-	1	1
1949	316	2,050	-	-	(2)	(2)
IMPORTS(1)						
1937						
1938						
1939						
1940						
1941						
1942						
1943						
1944						
1945						
1946						
1947						
1948						
1949						
DOMESTIC DISAPPEARANCE IN POUNDS PER CAPITA						
1937	.10	.20	.03	.06	.01	.02
1938	.09	.18	.03	.06	.01	.02
1939	.10	.28	.01	.02	.04	.03
1940	.17	.32	.02	.05	.01	.06
1941	.14	.35	.02	.05	.01	.02
1942	.15	.26	.04	.08	.02	.03
1943	.14	.24	.02	.04	.02	.03
1944	.12	.21	.02	.04	.01	.04
1945	.16	.31	.03	.05	.01	.02
1946	.15	.32	.01	.03	-	.02
1947	.14	.29	.02	.05	.04	.06
1948	.11	.27	.02	.04	.02	.04
1949	.12	.28	.02	.04	.01	.07

(1) Condensed skimmilk is not separately listed in import returns. Condensed milk designated as such shown in trade reports consists principally of condensed whole milk products. (2) Not available at date of publication. (3) Less than 500 lbs.

Table 6 - PRODUCTION OF DAIRY BUTTER AND WHEY BUTTER IN CANADA,
by Provinces, January 1947, 1948 and 1949

Province	DAIRY BUTTER			WHEY BUTTER		
	1947	1948	1949	1947	1948	1949
	000 lb.	000 lb.	000 lb.	lb.	lb.	lb.
CANADA	4,514	4,895	4,081	39,000	27,300	20,800
Prince Edward Is.	25	26	47	-	-	-
Nova Scotia	171	145	163	-	-	-
New Brunswick ...	377	452	339	-	-	-
Quebec	591	632	902	4,000	2,000	(x)
Ontario	546	622	625	33,000	23,000	17,700
Manitoba	430	456	501	1,000	900	800
Saskatchewan	1,354	1,395	834	-	-	-
Alberta	903	1,038	586	-	(x)	(x)
British Columbia.	117	129	84	(x)	(x)	(x)

x Since less than three firms reported whey butter production, figures are not shown. The quantity produced during the month is included however, in the total for Canada.

Table 7. - SUPPLY AND DISAPPEARANCE OF CREAMERY BUTTER IN CANADA
October to February, 1947-48 and 1948-49.

		October	November	December		January	February(1)
		'000 lb.	'000 lb.	'000 lb.		'000 lb.	'000 lb.
1. Stocks, First of Month	1947	73,374	71,158	59,325	1948	43,818	31,561
	1948	53,653	53,910	46,710	1949	37,397	27,695
2. Production during month	1947	27,058	15,056	10,254	1948	8,957	8,026
	1948	23,985	16,424	11,936	1949	9,696	8,433
3. Imports during month	1947	(2)	-	-	1948	(2)	-
	1948	5,600	4,480	4,088	1949	1,511	(3)
4. Total Supply	1947	100,432	86,214	69,579	1948	52,775	39,587
	1948	83,238	74,814	62,734	1949	48,604	36,128
5. Stocks, End of Month	1947	71,158	59,325	43,818	1948	31,561	18,955
	1948	53,910	46,710	37,397	1949	27,695	18,822
6. Exports during month	1947	200	98	73	1948	71	94
	1948	63	73	59	1949	33	102
7. Domestic Disappearance (Total Supply less 5 and 6)	1947	29,074	26,791	25,688	1948	21,143	20,538
	1948	29,265	28,031	25,278	1949	20,876	17,204

(1) Preliminary. (2) Less than 500 lbs. (3) Not available.

Table 8. - UTILIZATION OF MILK IN PERCENTAGES OF TOTAL MILK PRODUCTION
in Canada, by Provinces, January 1948 and 1949.

Province	Year	Sold for Distribution in Manufacture				Used on Farms	
		Creamery Butter	Fluid Sales	Factory Cheese	Conc. Milk & Ice Cream	Dairy Butter	Other Purposes
		%	%	%	%	%	%
CANADA	1948	23.2	38.6	1.3	4.7	12.7	19.5
	1949	25.2	38.8	1.1	5.2	10.6	19.1
Prince Edward Is.	1948	42.2	24.1	1.1	0.7	7.4	24.5
	1949	46.8	16.9	0.6	0.5	10.0	25.2
Nova Scotia	1948	31.2	38.2	-	4.5	11.6	14.5
	1949	28.1	37.2	-	5.6	12.9	16.2
New Brunswick ...	1948	16.7	23.2	0.4	1.6	40.1	18.0
	1949	22.1	24.1	0.2	1.8	30.2	21.6
Quebec	1948	12.7	58.4	0.7	3.6	7.9	16.7
	1949	19.5	50.3	0.6	4.3	9.9	15.4
Ontario	1948	23.6	44.1	2.5	7.6	4.7	17.5
	1949	24.4	43.1	2.0	9.0	4.6	16.9
Manitoba	1948	34.6	22.7	1.2	1.3	15.5	24.7
	1949	31.6	26.1	0.9	1.6	18.8	21.0
Saskatchewan	1948	29.4	13.5	-	0.9	28.3	27.9
	1949	30.3	16.2	-	0.9	20.6	32.0
Alberta	1948	30.5	19.8	1.6	2.8	21.7	23.7
	1949	33.3	24.2	1.4	3.2	14.0	23.9
British Columbia.	1948	9.0	63.8	0.9	10.6	6.2	9.5
	1949	15.5	62.7	0.5	5.6	4.1	11.6

Table 9. - MILK PRODUCTION AND UTILIZATION IN CANADA, BY PROVINCES,
January 1947, 1948 and 1949

Section A

		Total Milk Production	Factory Production				Farm Production	
			Creamery Butter	Factory Cheese	Concen. Milk	Ice Cream	Dairy Butter	Farm Cheese
		'000 lb.	'000 lb.	'000 lb.	'000 lb.	'000 lb.	'000 lb.	
CANADA	1947	943,406	229,566	22,182	29,805	10,918	105,763	691
	1948	903,444	209,865	12,225	27,541	14,476	114,689	650
	1949	901,702	227,177	10,078	33,205	14,233	95,618	640
P. E. I.	1947	8,186	3,350	134	-	43	586	1
	1948	8,216	3,468	89	-	57	609	1
	1949	11,018	5,155	67	-	57	1,101	1
N. S.	1947	31,929	10,051	-	703	643	4,007	26
	1948	29,408	9,185	-	522	815	3,397	26
	1949	29,687	8,341	-	510	1,172	3,819	26
N. B.	1947	26,894	5,483	546	-	300	8,833	3
	1948	26,381	4,405	100	-	429	10,590	4
	1949	26,319	5,811	56	-	486	7,943	4
Que.	1947	199,798	30,811	5,314	5,381	1,815	13,847	27
	1948	186,553	23,758	1,281	4,149	2,501	14,808	27
	1949	214,209	41,729	1,402	6,987	2,272	21,134	27
Ont.	1947	331,845	83,926	12,543	19,607	5,044	12,793	144
	1948	307,498	72,563	7,653	17,563	5,773	14,754	134
	1949	317,647	77,600	6,403	22,674	5,616	14,644	132
Man.	1947	70,988	25,140	1,123	-	729	10,075	111
	1948	69,100	23,946	850	-	929	10,684	100
	1949	62,568	19,798	557	-	1,029	11,738	99
Sask.	1947	118,182	35,121	67	-	514	31,724	134
	1948	115,711	33,997	-	-	1,043	32,685	123
	1949	94,891	28,795	-	-	886	19,541	121
Alta.	1947	108,644	30,600	1,942	1,713	758	21,157	212
	1948	112,234	34,208	1,840	1,800	1,300	24,320	202
	1949	97,979	32,614	1,359	1,969	1,129	13,730	197
B. C.	1947	46,940	5,084	513	2,401	1,072	2,741	33
	1948	48,343	4,335	412	3,507	1,629	3,022	33
	1949	47,384	7,334	234	1,065	1,586	1,968	33

Table 9. - MILK PRODUCTION AND UTILIZATION IN CANADA, BY PROVINCES,
January 1947, 1948 and 1949

Section B

		Milk Otherwise Used				Recapitulation		
		Fluid Milk	Fluid(1) Cream	Farm-Home Consumed	Fed to Livestock	Factory Production	Farm Production	Otherwise Used
		'000 lb.	'000 lb.	'000 lb.	'000 lb.	'000 lb.	'000 lb.	
CANADA	1947	306,390	51,882	142,789	43,420	292,471	106,454	544,481
	1948	290,896	57,322	133,497	42,283	264,107	115,339	523,998
	1949	292,337	56,873	130,628	40,913	284,693	96,258	520,751
P.E.I.	1947	1,759	102	1,888	323	3,527	587	4,072
	1948	1,801	175	1,699	317	3,614	610	3,992
	1949	1,707	157	2,202	571	5,279	1,102	4,637
N.S.	1947	11,333	892	3,622	652	11,397	4,033	16,499
	1948	10,211	1,024	3,586	642	10,522	3,423	15,463
	1949	10,068	973	3,697	1,081	10,023	3,845	15,819
N.B.	1947	6,169	422	4,533	605	6,327	8,836	11,729
	1948	5,577	540	4,125	611	4,934	10,594	10,853
	1949	5,806	542	5,269	402	6,353	7,947	12,019
Que.	1947	94,835	14,422	29,892	3,454	43,321	13,874	142,603
	1948	92,749	16,268	27,800	3,212	31,689	14,835	140,029
	1949	91,822	15,326	28,125	4,785	52,390	21,161	140,658
Ont.	1947	126,027	15,211	42,085	14,465	121,120	12,937	197,788
	1948	117,583	17,919	39,560	14,176	103,552	14,708	189,238
	1949	118,994	18,062	43,146	10,376	112,293	14,776	190,578
Man.	1947	12,783	3,848	12,277	4,902	26,992	10,186	33,810
	1948	11,837	3,321	11,786	5,147	25,725	10,784	32,591
	1949	12,322	3,989	9,654	3,382	21,384	11,837	29,347
Sask.	1947	12,204	3,774	28,168	6,476	35,702	31,858	50,622
	1948	11,813	3,853	25,915	6,282	35,040	32,808	47,863
	1949	11,718	3,606	21,867	8,357	29,681	19,662	45,548
Alta.	1947	18,355	5,667	17,200	11,040	35,013	21,369	52,262
	1948	16,721	5,469	15,996	10,378	39,148	24,522	48,564
	1949	18,042	5,753	13,165	10,021	37,071	13,927	46,981
P.C.	1947	22,925	7,544	3,124	1,503	9,070	2,774	35,096
	1948	22,604	8,253	3,030	1,518	9,883	3,055	35,405
	1949	21,858	7,865	3,503	1,938	10,219	2,001	35,164

Table 10. - FARM INCOME FROM DAIRYING AND PRICE AVERAGES PER HUNDRED POUNDS OF MILK,
By Provinces and By Products, January 1948 and 1949.

	Income		Price		Income		Price	
	1948	1949	1948	1949	1948	1949	1948	1949
	TOTAL INCOME				(1) FLUID SALES (Milk only)			
	\$ '000	\$ '000	\$	\$	\$ '000	\$ '000	\$	\$
CANADA	20,546	21,057	3.16	3.23	11,082	11,399	3.81	3.90
P.E.I.	163	216	2.87	2.95	61	64	3.39	3.72
N.S.	769	794	3.19	3.42	395	430	3.87	4.27
N.B.	554	495	3.22	3.28	228	236	4.08	4.07
Que.	4,934	5,643	3.36	3.39	3,524	3,544	3.80	3.86
Ont.	7,956	8,208	3.23	3.26	4,468	4,605	3.80	3.87
Man.	1,247	1,118	2.80	2.89	446	461	3.77	3.74
Sask.	1,619	1,503	2.68	2.74	429	425	3.63	3.63
Alta.	1,837	1,783	2.86	2.86	656	698	3.92	3.87
B.C.	1,467	1,497	3.52	3.70	875	936	3.87	4.28
	(2) FLUID CREAM				(3) MILK FOR CONCENTRATION			
CANADA	1,540	1,560	2.69	2.74	875	1,108	3.18	3.34
P.E.I.	4	4	2.56	2.78	-	-	-	-
N.S.	25	29	2.41	2.99	15	15	2.83	2.88
N.B.	16	17	2.98	3.12	-	-	-	-
Que.	399	435	2.45	2.73	132	244	3.17	3.49
Ont.	498	473	2.78	2.62	546	750	3.11	3.31
Man.	91	95	2.37	2.38	-	-	-	-
Sask.	91	91	2.37	2.51	-	-	-	-
Alta.	136	141	2.49	2.45	55	62	3.04	3.14
B.C.	280	275	3.39	3.50	127	37	3.63	3.50
	(4) CHEESE MILK				(5) ICE CREAM MILK			
CANADA	354	275	2.90	2.73	412	435	2.85	3.06
P.E.I.	2	2	2.66	2.78	2	2	2.78	2.95
N.S.	-	-	-	-	27	40	3.36	3.45
N.B.	3	1	2.80	2.65	13	16	3.14	3.23
Que.	38	37	2.95	2.60	72	75	2.87	3.30
Ont.	229	174	2.98	2.72	161	169	2.79	3.02
Man.	23	16	2.66	2.91	22	26	2.42	2.50
Sask.	-	-	-	-	28	25	2.67	2.79
Alta.	49	37	2.64	2.73	37	31	2.82	2.79
B.C.	10	8	2.45	3.43	50	51	3.08	3.22
	(6) CREAMERY BUTTER FAT				(7) DAIRY BUTTER			
	\$ '000	\$ '000	¢	¢	\$ '000	\$ '000	¢	¢
CANADA	5,208	5,724	70.9	72.0	1,076	556	65.3	68.5
P.E.I.	91	139	75.4	77.4	3	5	64.0	68.0
N.S.	241	216	75.0	74.0	66	64	67.0	70.0
N.B.	113	151	73.3	74.3	181	74	69.0	73.0
Que.	603	1,124	72.5	77.0	167	184	66.0	69.0
Ont.	1,846	1,960	72.7	72.15	208	77	67.0	69.0
Man.	577	492	68.9	70.95	88	28	64.0	65.0
Sask.	812	693	68.2	68.7	259	69	62.0	64.0
Alta.	825	775	68.9	67.95	79	39	63.0	66.0
B.C.	100	174	66.0	67.7	25	16	64.0	68.0

¹/1949 prices include dividends, quality bonuses and additional factory payments not represented in 1948 data.

Table 11 - MEAN TEMPERATURES AND TOTAL PRECIPITATION AT TWENTY-ONE STATIONS IN CANADA
December, 1947 and 1948, and January and February, 1948 and 1949

Weather Station		Temperature			Precipitation		
		December	January	February	December	January	February
		Degrees	Degrees	Degrees	Inches	Inches	Inches
Charlottetown	1948	24	19	13	4.7	2.7	2.0
	1949	29	23	21	3.7	3.3	4.3
Napan	1948	20	16	12	4.1	4.9	2.4
	1949	28	22	21	3.2	2.9	3.2
Kentville	1948	25	20	19	5.5	6.6	1.9
	1949	30	25	24	4.5	2.2	3.1
Fredericton	1948	18	11	7	1.7	3.9	1.3
	1949	25	20	18	2.9	3.2	2.3
Lennoxville	1948	14	9	10	2.2	2.3	3.1
	1949	25	20	19	5.1	3.4	3.8
Ste. Anne	1948	15	9	9	3.2	2.7	0.8
	1949	24	16	14	1.6	3.2	2.1
L'Assomption	1948	13	6	7	1.8	1.4	1.6
	1949	24	17	17	3.0	3.6	1.9
Ottawa	1948	15	8	9	2.0	1.3	1.9
	1949	25	18	18	3.5	2.8	2.1
Harrow	1948	29	20	25	2.5	1.3	2.4
	1949	32	-	-	2.2	2.1	-
Kapuskasig	1948	8	-5	-1	1.9	0.6	0.7
	1949	-	-	-	-	-	-
Morden	1948	9	1	3	2.6	0.5	2.3
	1949	8	1	-3	2.5	1.9	0.7
Brandon	1948	4	1	0	1.6	0.5	0.9
	1949	3	-2	-6	3.8	0.8	0.4
Indian Head	1948	8	7	0	1.3	1.3	0.5
	1949	3	-5	-4	2.0	0.2	0.5
Swift Current	1948	18	15	6	0.5	0.5	1.1
	1949	6	0	0	1.2	0.6	-
Scott	1948	8	10	-4	1.4	1.3	1.1
	1949	-1	-4	-8	0.7	0.1	0.3
Lethbridge	1948	27	27	11	0.7	0.9	1.7
	1949	12	6	6	0.3	1.6	0.9
Lacombe	1948	20	20	5	0.8	0.7	2.8
	1949	5	3	-1	0.4	1.2	0.5
Manyberries	1948	22	21	7	0.3	0.6	0.8
	1949	7	-1	2	0.4	0.7	1.1
Agassiz	1948	39	39	35	13.3	6.0	8.5
	1949	33	30	34	8.3	2.7	12.0
Summerland	1948	33	28	27	0.7	0.3	1.0
	1949	23	15	22	0.9	0.7	2.1
Sydney	1948	41	39	37	8.0	3.6	6.9
	1949	-	32	37	-	1.3	6.9

Source: Experimental Farms Meteorological Service.

STATISTICS CANADA LIBRARY
BIBLIOTHÈQUE STATISTIQUE CANADA



1010779681