

23-001

Historical Copy

DOMINION BUREAU OF STATISTICS OTTAWA - CANADA

Published by Authority of the Rt. Hon. C. D. Howe, Minister of Trade and Commerce



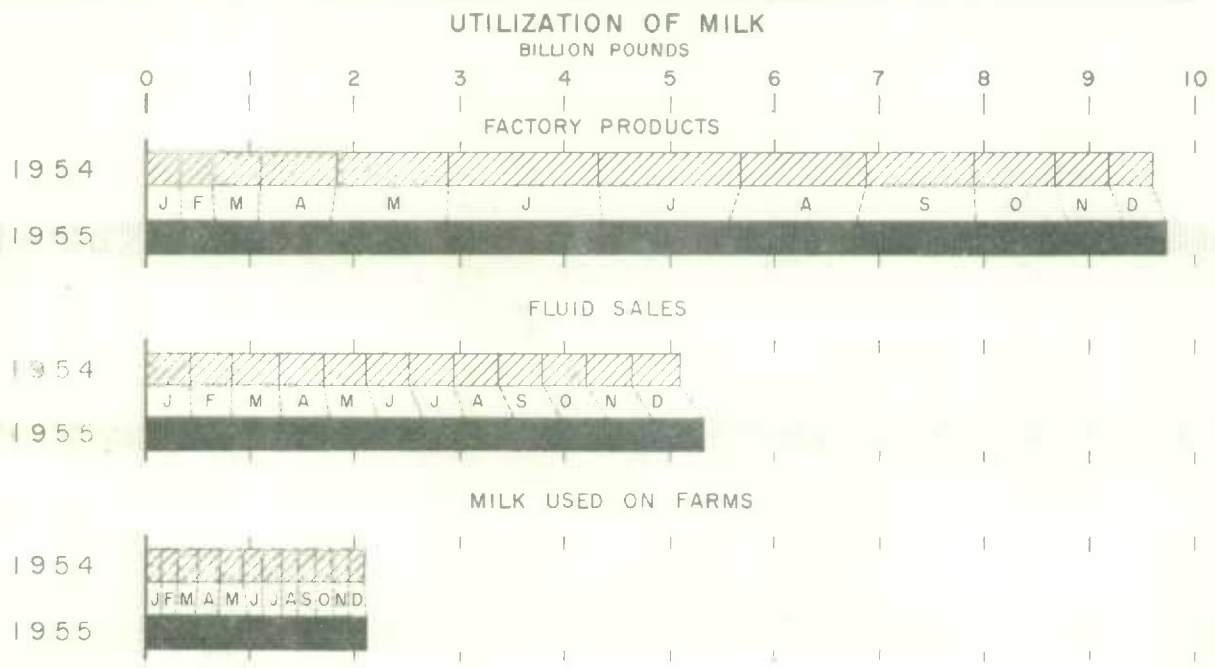
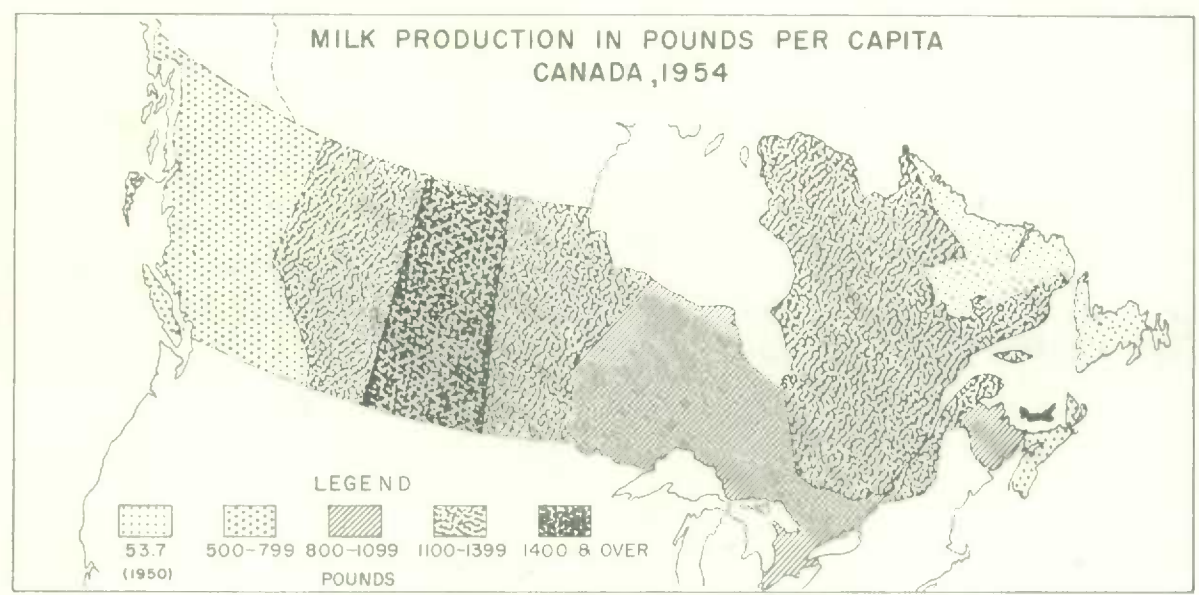
DOMINION BUREAU OF STATISTICS
FEB 29 1956
PROPERTY OF THE LIBRARY

THE DAIRY REVIEW

Volume No. XVII Report No. 1

JANUARY 1956

Price \$2.00 per year



INDEX

	<u>Page</u>
Text	Review of the Dairy Situation in 1955, and January, 1956. 1 and 3
Table 1	Cows Milked, Cows Freshening and Milk Production per Cow, Canada, by Provinces, January 1955 and 1956. 2
Table 2	Dairy Butter Production, Canada, by Provinces, December and January-December 1954 and 1955. 2
Text	The Dairy Situation in January, 1956 3
Text	Farm Milk Production, Utilization and Income December, 1955 4
Text	Production, Distribution and Prices of Dairy Products in December, 1955. 5
Table 3	Milk Production and Utilization, Canada, by Provinces, December 1954 and 1955. 6
Table 4	Milk Equivalents of Factory Products and Fluid Sales, Canada, by Provinces, December 1954 and 1955. 7
Table 5	Percentage of Milk Supply Utilized in Dairy Products, Canada, by Provinces, December 1954 and 1955. 8
Table 6	Farm Cash Income from Dairy Products Sold by Farmers, Canada, by Provinces, December 1954 and 1955. 9
Table 7	Prices of Dairy Products, Average Per Unit F.O.B., Farm, Canada, by Provinces, December 1954 and 1955. 10
Table 8	Butter, Supply and Disposition, Canada, December and January-December 1951 to 1955. 11
Table 9	Cheese, Supply and Disposition, Canada, December 1951 to 1955. 11
Table 10	Concentrated Milk, Supply and Disposition, Canada, December and January-December, 1951 to 1955 12
Table 11	Condensed, Evaporated and Powdered Products - Supply and Disposition, Canada, December and January-December, 1951 to 1955 13

SUPPLEMENT

	<u>Page</u>
Index	1
Part I	Dairy Butter, Canada, 1954 and 1955
	Table I Production 1
	Sold off Farms 1
	Farm-home Consumed 1
	Table II Dairy Butter Production, by Provinces, 1954 and 1955 2
Part II	Milk Production and Utilization
	Tables III, IV, V and VI 3-9
Part III	Income and Prices
	Table I, Farm Prices of Dairy Products 1
	Tables II, III, IV and V, Farm Cash Income from Dairying 2-5

ERRATA

Farm Cash Income (Supplement Part III)

Since this report was published a mechanical error was revealed which results in a number of changes in the figures given in the Supplement to the Dairy Review, (Tables II and III) covering Farm Cash Income for 1954.

Figures given are in thousands of pounds

Page 2, Table II, column 1, Total Income for Canada, 1954

February - Change from \$24,489 to \$24,124
Year - Change from \$426,901 to \$426,538

Page 2, Table II, column 3, Creamery Butter-Fat, 1954

February - Change from \$5,458 to \$5,095
Year - Change from \$155,891 to \$155,528

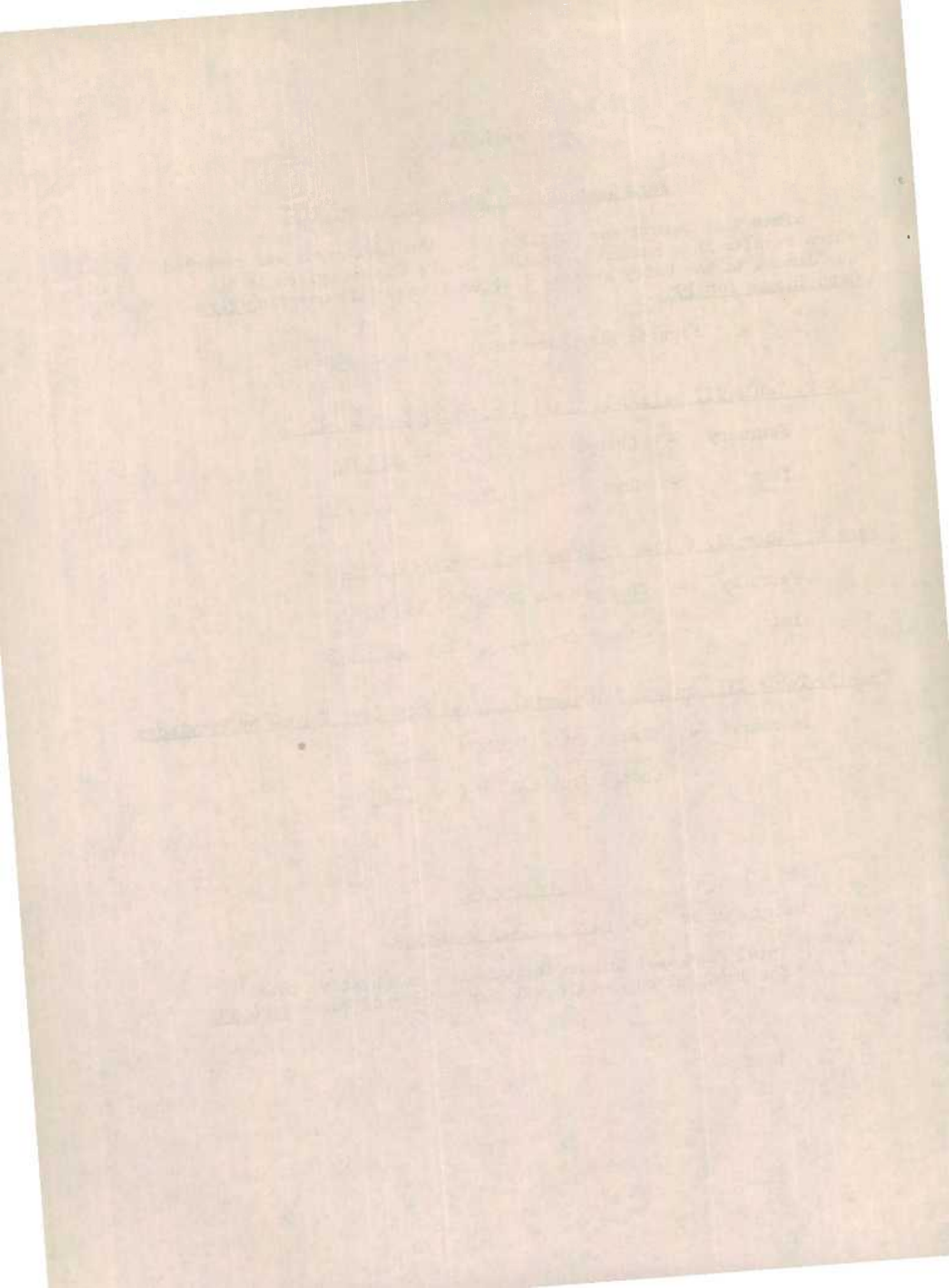
Page 3, Table III, column 3 (Ontario), Total Farm Cash Income by Provinces

February - Change from \$9,010 to \$8,647
Year - Change from \$143,298 to \$142,935

Dairy Review

Dairy Review Text, page 1, last paragraph:

Total Farm Cash Income for Canada - comparative total for 1954, given as \$426,901 should be changed to \$426,538



REVIEW OF THE DAIRY SITUATION IN 1955

The coloured sheets appended to this report contain a special supplement covering monthly statistics of milk production and utilization (Parts I and II) and Farm Cash Income and Prices (Part III). In using these statistics it is well to remember that the 1954 figures are final, while those for 1955 may be slightly revised a year hence when the data are checked with annual reports and related statistics. These final revisions are of a very minor character, except those of cheese production which are generally revised in an upward direction.

Conditions during the past year were quite favourable for dairying. Heavy falls of snow, particularly in Eastern Canada, provided ample moisture, but the opening of Spring was later than usual and pasture grass was slow to start. However, the growth was rapid under the favourable weather conditions that prevailed in May and June and continued to provide ample forage for dairy cattle until the hot, dry weather of late July and August produced drought conditions in Eastern Canada. Generally there was plenty of moisture in the Prairie Provinces and in British Columbia. With cow numbers at June about 2½ per cent above those of the previous June, there was a considerable expansion in milk production during the season. As usual, production reached the peak in the month of June. With improved moisture conditions in September, pastures that had suffered from dry weather made a rapid recovery and the higher level of production was maintained during the last quarter of 1955.

THE STATISTICAL POSITION IN 1954

Total milk production in 1955 shown in the supplement which accompanies this report amounted to 17,276,644 thousand pounds, compared with 16,902,148 thousand pounds in 1954. These figures include 86,232 thousand pounds and 83,858 thousand pounds for the two years, respectively, represented by the milk equivalent of creamed cottage cheese and varieties of cheese other than cheddar. These figures are not included in monthly milk production estimates shown in the supplement or in the estimates currently published in the Dairy Review.

It will be noted from the figures shown in Table 1 of the supplement that dairy butter production suffered a further decline in 1955, the total of 18,561 thousand pounds being almost 1 million pounds below the output of 1954 (19,487 thousand pounds). The downward trend in dairy butter production has been evident since the early twenties, and has suffered sharp declines since 1941.

Fluid milk sales in 1955 reached a total of 4,465,380 thousand pounds, a slight increase from the 4¼ billion pounds so utilized in the previous year. Similarly, fluid cream, at 864,720 thousand pounds increased from approximately 841 million pounds in the previous year. The combined total of 5,330,100 thousand pounds in 1955 increased about a quarter of a million pounds over 1954. It will be noticed that the quantities of milk used in farm homes (including cream on a milk basis) remained fairly steady from month to month, and the total of 1,072,510 thousand pounds was only about 24 million pounds higher than the previous year. The quantities of milk fed to livestock vary somewhat from month to month, depending, of course, on the numbers of calves being fed. In the aggregate, however, there is little difference between the two years, approximately 576 million pounds being used for this purpose in 1955 as compared with approximately 595 million pounds in 1954. Products shown in the miscellaneous group include the milk equivalents of concentrated milk products and ice cream. The figures shown reflect the increase in products manufactured in 1955 as compared with 1954.

Farm Cash Income from dairying in 1955 was \$437,994,000., up from \$426,901,000. in 1954. All products contributed to the increase except cheese milk. The average per hundred pounds of milk was \$2.88 in both years (all products).

TABLE I - COWS MILKED, COWS FRESHENED AND MILK PRODUCTION PER COW 1/
Canada, by Provinces*, January, 1955 and 1956

Province	Year	Percentage of		Daily Milk Production per Cow	
		Cows Milked %	Cows Freshened %	All Cows lb.	Cows Milked lb.
Canada	1955	55.2	6.6	12.0	21.9
	1956	56.0	6.2	12.4	22.2
P.E.I.	1955	61.0	4.4	10.4	17.1
	1956	64.2	3.0	10.9	16.9
N.S.	1955	66.4	7.8	13.1	19.7
	1956	68.1	7.0	13.9	20.3
N.B.	1955	58.0	5.3	9.1	15.8
	1956	62.6	5.0	10.6	17.0
Que.	1955	42.4	3.3	7.4	17.4
	1956	45.6	3.5	8.1	17.8
Ont.	1955	58.7	7.5	14.9	25.4
	1956	58.5	7.2	15.4	26.3
Man.	1955	53.1	7.7	11.6	21.8
	1956	53.0	7.4	11.4	21.5
Sask.	1955	53.9	8.8	10.8	20.0
	1956	53.6	7.5	10.9	20.4
Alta.	1955	59.3	7.7	14.0	23.6
	1956	59.0	7.3	14.0	23.8
B.C.	1955	69.5	9.1	17.1	24.6
	1956	70.1	8.2	16.5	23.5

TABLE 2 - DAIRY BUTTER PRODUCTION
Canada, by Provinces*, December and January-December, 1954 and 1955

Province	December			January - December		
	1954	1955	Percent of 1954	1954	1955	Percent of 1954
	'000 lb.	'000 lb.	%	'000 lb.	'000 lb.	%
Canada	1,542	1,628	106	19,487	18,561	95
P.E.I.	39	35	90	364	363	100
N.S.	64	77	120	1,034	982	95
N.B.	134	122	91	1,805	1,765	98
Que.	338	457	135	3,863	3,391	88
Ont.	82	103	126	1,350	1,059	78
Man.	167	140	84	1,999	2,089	105
Sask.	426	434	102	5,396	5,438	101
Alta.	235	212	90	2,943	2,741	93
B.C.	57	48	84	733	733	100

* Data for Newfoundland are not available.

1/ Refers to dairy cows two years old and over.

THE DAIRY SITUATION IN JANUARY, 1956

Advance information based on reports from dairy factories and farm dairy correspondents places the milk production at approximately 997 million pounds, representing an increase of approximately 5 per cent over that of January, 1954. As forecast in the previous issue of the Review, the farm milk supply in December, 1955, was about 5½ per cent above that of December, 1954. The flow of milk into manufacturing channels continues to utilize a large share of the total milk supply, the factory intake in January being up 7 per cent from the previous January. More milk was used in farm homes than in the previous January, but less milk was fed to livestock. The combined total of 123 million pounds represented a gain of about 1½ per cent as compared with January, 1955. Data covering factory utilization is set forth in the table below.

MILK EQUIVALENTS OF DAIRY FACTORY PRODUCTION

	January-December			January		
	1954	1955*	Percentage Change	1955*	1956	Percentage Change
	'000 lb.	'000 lb.	%	'000 lb.	'000 lb.	%
Creamery Butter	7,329,582	7,438,181	(+) 1.5	256,723	272,516	(+) 6.2
Cheddar Cheese	938,828	871,618	(-) 7.2	21,384	22,253	(+) 4.1
Factory Cheese (Cottage and Other) <u>1/</u>	83,858	86,232	(+) 2.8	<u>1/</u>	<u>1/</u>	-
Concentrated Products	863,710	912,398	(+) 5.6	41,456	47,108	(+) 13.6
Ice Cream	486,965	555,424	(+) 14.1	23,477	25,755	(+) 9.7
TOTAL	9,702,943	9,863,853	(+) 1.7	343,040	367,632	(+) 7.2

* Revised

1/ Data are not available, by months, for the products indicated.

The numbers of cows on farms reported at 3,287 thousand in the previous issue of this report 1/, showed a slight increase, according to the January dairy-farm survey, but remained at approximately 2 per cent above the estimated numbers reported in the same month of the previous year. Moreover, there was a larger percentage of cows milked, the average being 56 per cent in January, 1956, as compared with 55 per cent in January, 1955. However, in December, 1955, 65 per cent of the cows were milked; so that this reduction from the previous month should be taken into consideration in evaluating the milk supply position between December and January. Freshenings were down 4 per cent, but the numbers of cows in calf were about the same as a year ago. On the other hand, the daily milk production per cow, which averaged 12.4 pounds, based on all cows in the herds of dairy correspondents, and 22.2 pounds, based on those actually milked, represented a slight gain over January, 1955.

1/ Based on the semi-annual livestock survey of December 1, 1955 (see tables 13, 14 and 15 in the December issue of the Dairy Review).

The month of January was somewhat unusual in respect to variations in climate between different parts of the Dominion. Two distinct weather patterns were indicated. In Eastern Canada the weather was much warmer but there were fewer hours of bright sunshine than a year earlier. The snowfall varied somewhat, but was generally less abundant or melted quickly under the above-normal temperatures that prevailed. In the Prairie Provinces the situation was quite the opposite. Cold sub-zero weather with heavy falls of snow continued during the greater part of the month, and despite the increased hours of sunshine as compared with the previous January, heavy falls of snow continued to block roads and introduced difficult transportation problems in rural areas. Generally it was a favourable month for dairy production in most sections of Eastern Canada, but very unfavourable conditions existed in the Prairie regions and eastern British Columbia.

FARM MILK PRODUCTION, UTILIZATION AND INCOME IN DECEMBER, 1955 *

Farm Milk Production: The estimated quantity of milk produced on farms in December amounted to 1,061,610,000 pounds, an increase of 53.8 million pounds or 5.3 per cent above that of December, 1954. Of this amount, 430 million pounds or 40.5 per cent was utilized in factory production.

Fluid Sales: Sales of fluid milk and cream, the latter expressed as milk, amounted to 469,743,000 pounds in December, an increase of approximately 23 million pounds as compared with December, 1954. This included about 392 million pounds of fluid milk comprising 37 per cent of the farm milk supply, and fluid cream sales of 78 million pounds, representing 7 per cent.

Dairy Butter: The dairy butter make in December amounted to 1,628 thousand pounds in comparison with 1,542 thousand pounds in December, 1954. This represented an increase of 6 per cent. Nova Scotia, Quebec, Ontario and Saskatchewan contributed to this advance. In terms of milk the December production amounted to 38,096 thousand pounds, representing a little over 3½ per cent of the total milk production of Canada.

Farm Cash Income: Cash income from the sale of dairy products in December amounted to \$29,397,000. This represented an increase of approximately 4.9 per cent or \$1,376,000. in comparison with the same month last year. The weighted average price of \$3.26 per hundred pounds of milk was 3 cents lower than the corresponding month of 1954. Fluid milk at \$4.34 per hundred was 5 cents lower than December, 1954. Creamery butter-fat decreased from 62.7 to 60.2 cents per pound, while dairy butter at 59 cents was 1 cent higher than December, 1954. Milk used in manufacture at \$2.88 per hundred was 28 cents higher than in December, 1954. Cheese milk increased to \$2.53 per hundred, an increase of 12 cents per hundred in comparison with the same month a year earlier.

* Data for Newfoundland are not available.

PRODUCTION, DISTRIBUTION AND PRICES OF DAIRY PRODUCTS IN DECEMBER, 1955

Butter: Total butter production (including creamery, dairy and whey butter) amounted to 15 3/4 million pounds in December, 1955. This represented an increase of 1 1/4 million pounds or 8 per cent as compared with the same month last year. The January-December output of 338 1/4 million pounds was 1 per cent above the total of the same period of the previous year.

Stock Holdings: Holdings of butter in store and transit, which amounted to 114 million pounds at December 1, declined to 100 3/4 million pounds on January 1. Compared with those of a year ago, the stocks at December 1, showed an increase of approximately 10 3/4 million pounds, while those of January 1, increased 9 3/4 million pounds.

The Butter Supply: The quantity of butter represented by stocks on December 1, production and imports during the month, amounted to 129 3/4 million pounds. This was an increase of 12 million pounds as compared with last year.

Domestic Disappearance: The domestic disappearance of butter in December, including creamery, dairy and whey butter, amounted to 28 1/4 million pounds, an increase of 1 1/2 million pounds. On a per capita basis the domestic disappearance amounted to 1.81 pounds as compared with 1.76 pounds a year ago. During the January-December period the domestic disappearance of total butter amounted to 321 1/4 million pounds as compared with 314 3/4 million pounds in the same period of 1954; and the per capita disappearance of 20.59 pounds may be compared with 20.71 pounds a year earlier.

Butter Prices at Montreal: Butter prices at Montreal, based on quotations of the Canadian Commodity Exchange for first grade solids, averaged 58 cents per pound in December as against 61 cents in the same month last year.

Cheese Production: Cheddar cheese production in December, 1955 amounted to 2 1/2 million pounds, a decrease of 153 thousand pounds or 6 per cent less than that produced in December, 1954.

Cheese Prices: Ontario colored cheese at Montreal averaged 32 cents per pound in December, 1955. This compared with 31 1/2 cents in December, 1954.

Concentrated Milk Products: The total quantity of concentrated milk products manufactured in December was approximately 25 3/4 million pounds, which represented an increase of 4 3/4 million pounds in comparison with the same month last year. Concentrated whole milk products increased 2 3/4 million pounds, while by-products registered an increase of 2 million pounds. Evaporated milk, one of the most important of the whole milk products increased 2 3/4 million pounds and the production of skim milk powder, the leading milk by-product, was 1 million pounds above the output of December, 1954.

Ice Cream: The quantity of ice cream manufactured in December was approximately 1 1/2 million gallons, a decrease of 28 thousand gallons in comparison with the December production a year earlier. Production during the twelve-month period January-December amounted to 32,672,000 gallons. This represented an increase of 4 million gallons as compared with that produced in the same period of 1954.

TABLE 3 - MILK PRODUCTION AND UTILIZATION
Canada, by Provinces*, December, 1954 and 1955

Province	Year	Total Milk <u>1/</u>	Factory <u>2/</u>	Dairy	Farm-Home	Fed to	Fluid <u>3/</u>
		Production	Products	Butter	Consumed	Livestock	Sales
		'000 lb.	'000 lb.	'000 lb.	'000 lb.	'000 lb.	'000 lb.
Canada	1954	1,007,786 <u>a/</u>	402,074	36,085	85,490	37,116	447,021
	1955	1,061,610 <u>a/</u>	430,334	38,096	87,990	35,447	469,743
P.E.I.	1954	12,401	7,099	913	1,700	296	2,393
	1955	11,942	7,036	819	1,570	215	2,302
N.S.	1954	30,193	8,927	1,498	4,040	898	14,830
	1955	31,422	8,923	1,802	4,000	1,270	15,427
N.B.	1954	27,942	7,618	3,137	4,060	342	12,785
	1955	29,198	8,763	2,855	4,410	212	12,958
Que.	1954	311,210	109,299	7,909	22,000	4,630	167,372
	1955	350,163	136,865	10,694	23,900	4,420	174,284
Ont.	1954	338,648	154,640	1,919	18,200	11,800	152,089
	1955	344,391	150,572	2,410	18,800	10,500	162,109
Man.	1954	60,612	26,386	3,908	7,730	3,600	18,988
	1955	62,592	26,994	3,276	8,240	3,510	20,572
Sask.	1954	79,053	27,067	9,968	13,700	6,320	21,998
	1955	80,484	28,753	10,156	13,300	5,720	22,555
Alta.	1954	87,377	38,719	5,499	11,400	7,560	24,199
	1955	90,061	40,617	4,961	11,000	7,860	25,623
B.C.	1954	57,239	19,208	1,334	2,660	1,670	32,367
	1955	51,125	11,579	1,123	2,770	1,740	33,913

* Data for Newfoundland are not available.

1/ Total milk production by months does not include the milk equivalent of factory cheese other than cheddar, shown in the annual statement.

a/ Includes milk equivalent of concentrated milk products reported by less than three firms. (See Footnote "x/" in Table 4).

2/ Statistics for the separate Provinces shown under this caption do not include data for products manufactured in those Provinces indicated by footnote "x/" in table 4, but are included in the Canada total at the top of this column.

3/ Includes fluid milk and fluid cream expressed as milk.

TABLE 4 - MILK EQUIVALENTS OF FACTORY PRODUCTS AND FLUID SALES
Canada, by Provinces*, December, 1954 and 1955

Province	Year	Used in Manufacture				Fluid Sales	
		Creamery Butter	Cheddar Cheese	Concentrated Milk	Ice Cream	Milk	Cream <u>1/</u>
		'000 lb.	'000 lb.	'000 lb.	'000 lb.	'000 lb.	'000 lb.
Canada	1954	304,317	29,381	42,196	26,180	373,758	73,263
	1955	331,065	27,698	45,867	25,704	391,782	77,961
P.E.I.	1954	6,809	154	<u>x/</u>	136	2,041	352
	1955	6,763	154	<u>x/</u>	119	1,976	326
N.S.	1954	7,652	-	<u>x/</u>	1,275	13,056	1,774
	1955	7,886	-	<u>x/</u>	1,037	13,513	1,914
N.B.	1954	6,669	286	-	663	11,270	1,515
	1955	7,792	308	-	663	11,428	1,530
Que.	1954	83,351	5,797	14,660	5,491	141,759	25,613
	1955	111,548	7,216	11,624	6,477	147,288	26,996
Ont.	1954	99,371	20,977	24,425	9,367	129,716	22,373
	1955	99,520	17,963	24,011	9,078	137,499	24,610
Man.	1954	24,406	297	-	1,683	14,723	4,265
	1955	25,085	396	-	1,513	16,017	4,555
Sask.	1954	25,131	66	-	1,870	17,257	4,741
	1955	27,121	-	-	1,632	17,930	4,625
Alta.	1954	34,656	1,309	<u>x/</u>	2,754	18,702	5,497
	1955	37,066	1,188	<u>x/</u>	2,363	19,862	5,761
B.C.	1954	15,772	495	<u>x/</u>	2,941	25,234	7,133
	1955	8,284	473	<u>x/</u>	2,822	26,269	7,644

* Data for Newfoundland are not available.

1/ Cream expressed as Milk.

x/ Less than three firms manufacturing this product, data are included, however, in the Canada total at the top of this column.

TABLE 5 - PERCENTAGE OF MILK SUPPLY UTILIZED IN DAIRY PRODUCTS

Canada, by Provinces*, December, 1954 and 1955

Province	Year	Used in Manufacture				Fluid Sales	Used on Farms	
		Creamery Butter	Cheddar Cheese	Conc. Milk and Ice Cream	Total		Dairy Butter	Other Purposes
		%	%	%	%	%	%	
Canada	1954	30.20	2.92	6.78	39.90	44.36	3.58	12.16
	1955	31.18	2.61	6.74	40.53	44.25	3.59	11.63
P.E.I.	1954	54.91	1.24	1.10	57.25	19.30	7.36	16.09
	1955	56.63	1.29	0.99	58.91	19.28	6.86	14.95
N.S.	1954	25.34	-	4.22	29.56	49.12	4.96	16.36
	1955	25.10	-	3.30	28.40	49.10	5.73	16.77
N.B.	1954	23.87	1.02	2.37	27.26	45.76	11.23	15.75
	1955	26.69	1.05	2.27	30.01	44.38	9.78	15.83
Que.	1954	26.78	1.86	6.48	35.12	53.78	2.54	8.56
	1955	31.86	2.06	5.17	39.09	49.77	3.05	8.09
Ont.	1954	29.49	6.19	9.98	45.66	44.91	0.57	8.86
	1955	28.90	5.22	9.61	43.73	47.07	0.70	8.50
Man.	1954	40.26	0.49	2.78	43.53	31.33	6.45	18.69
	1955	40.08	0.63	2.42	43.13	32.87	5.23	18.77
Sask.	1954	31.79	0.08	2.37	34.24	27.83	12.61	25.32
	1955	33.70	-	2.03	35.73	28.02	12.62	23.63
Alta.	1954	39.66	1.50	3.15	44.31	27.70	6.29	21.70
	1955	41.16	1.32	2.62	45.10	28.45	5.51	20.94
B.C.	1954	27.55	0.86	5.14	33.55	56.55	2.33	7.57
	1955	16.20	0.93	5.52	22.65	66.33	2.20	8.82

* Data for Newfoundland are not available.

TABLE 6 - FARM CASH INCOME FROM DAIRY PRODUCTS SOLD BY FARMERS 1/
Canada, by Provinces*, December 1954 and 1955

Province	Year	All Products	Creamery Butter-Fat	Cheese Milk	Mfg. Milk 2/	Fluid and 3/ Factory Cream	Fluid Milk	Dairy Butter
		\$'000	\$'000	\$'000	\$'000	\$'000	\$'000	\$'000
Canada	1954	28,021	6,682	707	1,211	2,953	16,406	62
	1955	29,397	7,000	701	1,453	3,167	17,006	70
P.E.I.	1954	257	147	3	14	14	77	2
	1955	261	146	3	21	14	76	1
N.S.	1954	910	176	-	19	106	602	7
	1955	929	170	-	23	106	623	7
N.B.	1954	758	149	6	3	70	514	16
	1955	784	165	7	3	68	525	16
Que.	1954	9,311	1,899	143	419	880	5,954	16
	1955	10,106	2,424	178	357	1,022	6,098	27
Ont.	1954	9,903	2,180	501	674	887	5,656	5
	1955	10,142	2,051	458	691	968	5,968	6
Man.	1954	1,247	496	7	2	148	592	2
	1955	1,307	504	10	5	144	642	2
Sask.	1954	1,507	529	1	4	176	792	5
	1955	1,544	563	-	5	168	803	5
Alta.	1954	1,943	760	32	62	222	864	3
	1955	2,036	794	29	69	224	918	2
B.C.	1954	2,185	346	14	14	450	1,355	6
	1955	2,288	183	16	278	453	1,353	4

* Data for Newfoundland are not available.

1/ All data are based on prices f.o.b. farm.

2/ Includes income from sales of milk for concentration and for the manufacture of ice cream.

3/ Includes income from fluid cream and butter-fat used in the manufacture of ice cream.

TABLE 7 - PRICES OF DAIRY PRODUCTS, AVERAGE PER UNIT F.O.B. FARM 1/
Canada, by Provinces*, December 1954 and 1955

Province	Year	All Products	Creamery Butter-Fat	Cheese Milk	Mfg. Milk	Fluid Milk	Dairy Butter
		per cwt. ¢	per lb. ¢	per cwt. ¢	per cwt. ¢	per cwt. ¢	per lb. ¢
Canada	1954	3.29	62.7	2.41	2.60	4.39	58
	1955	3.26	60.2	2.53	2.88	4.34	59
P.E.I.	1954	2.54	61.4	2.07	2.65	3.78	62
	1955	2.58	61.4	2.05	2.87	3.84	61
N.S.	1954	3.70	65.5	-	2.42	4.61	58
	1955	3.66	61.5	-	2.62	4.61	56
N.B.	1954	3.60	63.5	2.25	4.56	4.56	61
	1955	3.51	60.5	2.24	4.57	4.59	61
Que.	1954	3.36	65.0	2.47	2.74	4.20	59
	1955	3.24	62.0	2.46	2.88	4.14	58
Ont.	1954	3.23	62.3	2.39	2.49	4.36	60
	1955	3.22	58.8	2.55	2.60	4.34	60
Man.	1954	2.74	58.0	2.28	2.70	4.02	55
	1955	2.74	57.3	2.63	2.71	4.01	57
Sask.	1954	3.06	60.1	2.26	3.75	4.59	56
	1955	3.00	59.3	-	3.03	4.48	55
Alta.	1954	2.99	62.6	2.46	2.73	4.62	56
	1955	2.97	61.1	2.46	2.65	4.62	57
B.C.	1954	4.21	62.5	2.88	3.00	5.37	59
	1955	4.38	63.2	3.25	4.01	5.15	60

* Data for Newfoundland are not available.

1/ Averages for all products include those of cream used for manufacture of ice cream and for fluid distribution. Items not shown separately in this statement.

TABLE 8 - BUTTER, SUPPLY AND DISPOSITION
Canada, December and January-December, 1951 to 1955

Year	Stocks Beginning '000 lb.	Production '000 lb.	Imports '000 lb.	Exports '000 lb.	Stocks End '000 lb.	Domestic Disappearance	
						Total '000 lb.	Per Capita lb.
D E C E M B E R							
1951	56,811	12,592	4	37	44,974	24,396	1.74
1952	66,384	15,156	(x)	8	54,497	27,035	1.87
1953	82,605	15,288	-	11	71,312	26,570	1.30
1954	103,212	14,610	-	3	91,151	26,668	1.76
1955	113,899	15,836	3	651	100,808	28,279	1.81
J A N U A R Y - D E C E M B E R							
1951	39,319	286,018	17,488	544	44,974	297,307	21.22
1952	44,974	306,228	4,567	866	54,497	300,406	20.82
1953	54,497	325,690	5	191	71,312	308,689	20.88
1954	71,312	334,698	?	143	91,151	314,719	20.71
1955	91,151	338,249	12	7,403	100,808	321,201	20.59

* Includes creamery, dairy and whey butter.

(x) Less than 500 lb.

TABLE 9 - CHEESE, SUPPLY AND DISPOSITION
Canada, December, 1951 to 1955

Year	Stocks Beginning '000 lb.	Production '000 lb.	Imports '000 lb.	Exports '000 lb.	Stocks End '000 lb.	Domestic Disappearance	
						December '000 lb.	Jan.-Dec. '000 lb.
CHEDDAR CHEESE							
1951	34,898	2,062	-	939	32,084	3,937	58,043
1952	44,127	1,988	-	183	40,993	4,939	62,773
1953	35,961	2,580	-	3,347	33,057	2,137	68,251
1954	46,357	2,671	1	1,444	42,424	5,161	70,976
1955	40,902	2,518	113	2,014	38,268	3,251	75,454
PROCESS CHEESE							
1951	1,048	3,283	-		1,023	3,308	39,551
1952	1,071	3,393	-		986	3,478	41,178
1953	3,761	3,311	-	1/	2,977	4,095	44,291
1954	2,802	3,824	-		2,995	3,631	44,422
1955	3,131	3,650	-	29	3,181	3,571	44,672
OTHER CHEESE (HARD AND SOFT VARIETIES)							
1955	1,391	841	751	18	1,796	1,169	14,121

1/ Small quantities included with cheddar cheese.

TABLE 10 - CONCENTRATED MILK, SUPPLY AND DISPOSITION

Canada, December and January - December, 1951 to 1955

	Whole Milk Products		Milk By-Products		Total	
	December	Jan.-Dec.	December	Jan.-Dec.	December	Jan.-Dec.
(A) Production - '000 lb.						
1951	13,433	340,547	4,945	95,215	18,378	435,762
1952	11,782	350,195	8,119	122,856	19,901	473,051
1953	16,285	323,320	6,470	116,466	22,755	439,786
1954	15,018	331,021	6,045	119,216	21,063	450,237
1955	17,749	347,515	7,935	125,550	25,684	473,065
(B) Stocks First of Month - '000 lb. ^{1/}						
1951	58,681	49,813	16,495	15,191	75,176	65,004
1952	78,609	68,032	24,494	23,962	103,103	91,994
1953	42,233	51,873	20,710	18,909	62,943	70,782
1954	59,632	51,724	21,978	16,003	81,610	67,727
1955	64,022	55,438	17,963	18,040	81,985	73,478
(C) Imports - lb.						
1951	5,631	51,698	190,050	7,375,255	195,681	7,426,953
1952	66	45,883	20,608	995,361	20,674	1,041,244
1953	8,815	42,137	70,938	681,830	79,753	723,967
1954	1,060	48,946	5,727	419,167	6,787	468,113
1955	4,125	69,656	586,415	1,180,239	590,540	1,249,895
(D) Exports - '000 lb.						
1951	5,592	40,010	505	2,428	6,097	42,438
1952	3,948	38,980	4,451	30,411	8,399	69,391
1953	3,469	32,525	11,976	27,647	15,445	60,172
1954	1,904	22,309	1,282	15,129	3,186	37,438
1955	1,605	22,755	329	9,230	1,934	31,985
(E) Domestic Disappearance - '000 lb.						
1951	16,715	279,032	5,934	91,534	22,649	370,566
1952	18,411	293,042	4,221	84,670	22,632	377,712
1953	23,185	306,996	(x)	94,554	19,551	401,550
1954	23,835	311,722	10,744	107,412	34,579	419,134
1955	24,732	321,116	8,115	115,463	32,847	436,579

^{1/} Stocks shown under the captions "Jan.-Dec." represent holdings as at January 1, 1952 to 1956.

(x) Since stocks and exports exceed the total supply, disappearance data are not shown for the month indicated.

TABLE II - CONDENSED, EVAPORATED AND POWDERED PRODUCTS - SUPPLY AND DISPOSITION

Canada, December and January - December, 1951 to 1955

Section A	December	Jan.-Dec.	December	Jan.-Dec.	December	Jan.-Dec.
	Condensed Whole Milk		Condensed Skimmilk		Casein	
Production - '000 lb.						
1951	691	19,541	342	6,282	261	6,678
1952	731	16,539	280	4,741	116	2,898
1953	922	18,462	365	4,037	225	4,885
1954	751	13,648	276	3,928	248	6,165
1955	963	13,237	278	3,682	219	6,351
Section B	Evaporated Whole Milk	Whole Milk Powder		Skimmilk Powder		
	(A) Production - '000 lb.					
1951	11,263	290,443	1,072	17,404	2,881	52,748
1952	8,960	305,715	1,132	16,035	5,905	88,229
1953	13,455	272,009	907	18,744	4,725	82,914
1954	12,122	280,350	1,417	18,819	4,241	83,332
1955	14,937	294,495	857	20,861	5,211	87,206
(B) Stocks First of Month - '000 lb. ^{1/}						
1951	52,086	43,897	3,981	4,321	9,231	8,475
1952	75,439	64,661	1,894	2,301	16,906	16,645
1953	58,979	48,369	1,681	1,984	12,452	10,709
1954	56,893	46,480	1,425	1,349	13,814	11,848
1955	55,487	47,678	2,998	3,123	13,343	13,188
(C) Exports - '000 lb.						
1951	3,785	21,639	991	10,105	455	1,031
1952	2,609	19,872	1,257	13,035	4,451	29,699
1953	2,305	13,382	953	13,943	11,736	23,479
1954	698	6,284	1,039	14,257	902	10,432
1955	741	5,307	660	16,134	278	5,878
(D) Domestic Disappearance - '000 lb.						
1951	15,667	250,169	(x)	4,994	3,183	52,052
1952	17,129	265,079	(x)	5,041	1,733	50,727
1953	21,760	274,919	(x)	5,138	(x)	65,472
1954	21,837	275,955	454	5,211	5,305	71,768
1955	22,055	287,990	73	2,970	5,612	80,788

^{1/} Stocks shown under the captions "Jan.-Dec." represent holdings as at January 1, 1952 to 1956.

(x) Since stocks and exports exceed the total supply, disappearance data are not shown for the months indicated.

SUPPLEMENT TO THE DAIRY REVIEW, 1955

N.B. Data on all tables are shown by months with yearly totals.

Index to Part 1

	<u>Page</u>
Table I. Dairy Butter Production and Utilization, Canada, 1954 and 1955	1
Table II. Dairy Butter Production by Provinces, 1954 and 1955	2

Index to Part 2

Table III. Milk Production and Utilization, Canada, 1954 and 1955	3
Table IV. Total Milk Production by Provinces, 1954 and 1955	4
Table V. Milk Utilization by Provinces, 1954 and 1955	5
(A) Factory Products	5
(B) Fluid Milk	6
(C) Fluid Cream	7
(D) Consumed in Farm-Homes	8
(E) Fed to Live Stock	9
Appendix Conversion Rates	10

Index to Part 3

Table I. Farm Prices of Dairy Products	1
Table II. Farm Cash Income from Dairy Products, Canada, 1954 and 1955	2
Table III. Total Farm Cash Income from Dairy Products, by Provinces, 1954 and 1955	3
Table IV. Farm Cash Income from Milk and Cream Used in Fluid Sales, by Provinces, 1954 and 1955	4
Table V. Farm Cash Income from Milk Used in Fluid Milk Sales, by Provinces, 1954 and 1955	5

PART 1

TABLE I - DAIRY BUTTER PRODUCTION AND UTILIZATION
Canada, Estimates 1954 and 1955

Month	Total Production		Amounts Sold off Farms		Farm-Home Consumed	
	1954	1955	1954	1955	1954	1955
	'000 lb.	'000 lb.	'000 lb.	'000 lb.	'000 lb.	'000 lb.
January	1,514	1,297	139	84	1,375	1,213
February	1,339	1,245	123	80	1,216	1,165
March	1,581	1,421	144	102	1,437	1,319
April	1,571	1,534	140	122	1,431	1,412
May	1,743	1,697	167	147	1,576	1,550
June	1,765	1,631	173	151	1,592	1,480
July	1,683	1,577	160	137	1,523	1,440
August	1,674	1,603	166	140	1,508	1,463
September	1,683	1,654	154	134	1,529	1,520
October	1,707	1,576	142	122	1,565	1,454
November	1,685	1,698	121	128	1,564	1,570
December	1,542	1,628	105	119	1,437	1,509
Year	19,487	18,561	1,734	1,466	17,753	17,095

TABLE II - DAIRY BUTTER PRODUCTION

Canada, by months and by Provinces 1/, 1954 and 1955

Month	Prince Edward Island		Nova Scotia		New Brunswick	
	1954	1955	1954	1955	1954	1955
	'000 lb.	'000 lb.	'000 lb.	'000 lb.	'000 lb.	'000 lb.
January	34	35	78	56	131	118
February	27	31	67	48	106	97
March	38	23	56	50	119	113
April	39	32	61	54	125	134
May	38	29	92	76	152	159
June	23	27	113	111	161	172
July	28	35	103	103	171	165
August	25	27	111	117	186	180
September	21	25	115	116	182	180
October	23	26	94	94	177	164
November	29	33	75	80	161	161
December	39	35	64	77	134	122
Year	364	363	1,034	982	1,805	1,765
	Quebec		Ontario		Manitoba	
January	327	166	114	72	149	152
February	255	171	95	72	139	158
March	411	292	106	91	156	180
April	378	333	108	81	159	184
May	325	323	127	104	181	201
June	328	249	132	76	167	179
July	276	224	92	71	175	193
August	268	235	92	80	180	179
September	289	268	116	99	171	175
October	301	276	160	89	188	175
November	367	397	126	121	167	173
December	338	457	82	103	167	140
Year	3,863	3,391	1,350	1,059	1,999	2,089
	Saskatchewan		Alberta		British Columbia	
January	421	422	214	223	46	53
February	392	409	218	212	40	47
March	416	417	235	201	44	49
April	420	442	230	219	51	55
May	487	491	269	245	72	69
June	477	486	274	250	85	82
July	482	471	274	240	82	75
August	487	471	258	240	67	74
September	477	476	248	245	64	70
October	458	457	238	233	68	62
November	453	462	250	221	57	50
December	426	434	235	212	57	48
Year	5,396	5,438	2,943	2,741	733	733

1/ Data for Newfoundland are not available.

PART II

TABLE III - MILK PRODUCTION AND UTILIZATION

Canada ¹/₁, by Months, 1954 and 1955

N.B. Data are revised, and differ from those published in Dairy Review, Jan.-Nov., 1955

Month	TOTAL MILK PRODUCTION		1. CREAMERY BUTTER		2. CHEDDAR CHEESE	
	1954	1955	1954	1955	1954	1955
	'000 lb.	'000 lb.	'000 lb.	'000 lb.	'000 lb.	'000 lb.
January	916,914	929,291	253,257	256,723	21,934	21,384
February	862,751	865,679	231,848	222,020	20,625	18,513
March	1,109,659	1,085,394	344,355	320,906	34,584	29,733
April	1,353,364	1,358,107	553,854	522,405	55,847	52,954
May	1,699,238	1,769,608	798,992	846,563	103,719	104,005
June	2,029,499	2,071,630	1,089,224	1,115,057	152,229	144,012
July	1,951,661	1,857,774	1,026,558	947,770	141,647	113,036
August	1,796,506	1,831,479	928,020	917,912	131,252	112,266
September	1,610,852	1,725,815	805,326	857,400	113,828	114,873
October	1,374,261	1,482,041	597,496	669,075	85,602	86,449
November	1,105,799	1,151,984	395,835	431,285	48,180	46,695
December	1,007,786	1,061,610	304,317	331,065	29,381	27,698
Year	16,902,148 *	17,276,644*	7,329,582	7,438,181	938,828	871,618
	3. MISC. FACTORY PRODUCTS 2/		4. DAIRY BUTTER		5. FARM-HOME CONSUMED	
January	57,131	64,933	35,427	30,350	84,150	82,860
February	61,380	68,680	31,333	29,133	74,940	74,130
March	90,436	86,355	36,996	33,250	84,000	84,030
April	109,705	121,727	36,761	35,897	84,190	86,050
May	157,562	166,249	40,787	39,710	91,080	93,680
June	185,225	191,644	41,301	38,165	90,540	93,360
July	184,367	187,803	39,383	36,900	95,160	99,330
August	151,679	180,558	39,171	37,511	95,380	99,110
September	116,346	149,355	39,381	38,703	88,910	92,220
October	93,742	108,838	39,943	36,879	89,840	92,300
November	74,726	70,109	39,428	39,733	84,520	87,450
December	68,376	71,571	36,035	38,096	85,490	87,990
Year	1,350,675	1,467,822	455,996	434,327	1,048,200	1,072,510
	6. FED TO LIVESTOCK		7. FLUID MILK		8. FLUID CREAM 3/	
January	41,848	38,923	354,931	365,395	68,236	68,723
February	42,747	39,732	333,656	345,547	66,222	67,924
March	68,045	65,543	377,976	391,077	73,267	74,500
April	89,604	91,440	353,671	374,223	69,732	73,411
May	82,013	80,060	354,893	368,508	70,192	70,833
June	57,533	55,425	342,565	357,092	70,882	76,875
July	42,888	40,286	346,616	359,608	75,042	73,041
August	35,605	33,185	343,938	379,090	71,411	71,847
September	33,335	30,791	347,959	374,022	65,267	68,451
October	31,941	33,231	366,348	384,388	69,349	70,831
November	31,830	31,741	363,247	374,648	68,033	70,323
December	37,116	35,447	373,758	391,782	73,263	77,961
Year	594,505	575,854	4,259,608	4,465,380	840,896	864,720

* Milk equivalents of cottage cheese and factory cheese other than cheddar, though not shown by months, are included in milk production totals for 1954 and 1955.

1/ Data for Newfoundland are not available.

2/ Data include milk equivalents of concentrated whole milk products and ice cream.

3/ Cream expressed as Milk.

TABLE IV - TOTAL MILK PRODUCTION

By months and by Provinces, 1/, 1954 and 1955

N.B. Data are revised, and differ from those published in Dairy Review, Jan.-Nov.1955

Month	Prince Edward Island		Nova Scotia		New Brunswick	
	1954	1955	1954	1955	1954	1955
	'000 lb.	'000 lb.	'000 lb.	'000 lb.	'000 lb.	'000 lb.
January	10,798	10,605	30,926	30,414	26,452	25,581
February	9,623	9,599	29,425	28,270	24,018	22,934
March	11,502	10,239	32,775	32,484	27,750	27,249
April	13,502	12,630	34,009	33,615	34,613	33,907
May	18,935	17,715	39,675	38,094	44,486	44,074
June	29,063	28,569	49,742	49,205	59,400	60,862
July	30,943	29,211	46,768	45,433	57,938	59,234
August	27,340	26,965	41,758	42,726	53,300	53,742
September	24,499	23,580	40,126	41,022	47,925	49,219
October	19,787	19,887	35,571	36,966	40,203	41,825
November	14,643	15,042	29,469	30,738	30,880	32,730
December	12,937	12,662	30,772	32,143	27,942	29,198
Year	223,583*	216,711*	441,306*	441,421*	474,962*	480,583*
	Quebec		Ontario		Manitoba	
January	263,686	258,329	313,415	323,740	57,630	59,947
February	227,146	225,891	296,822	307,034	61,062	59,987
March	311,348	301,527	388,109	389,595	77,008	75,991
April	452,003	456,125	451,766	461,525	85,410	85,161
May	601,099	629,397	562,680	594,320	102,453	112,341
June	738,137	772,570	638,567	635,625	128,874	129,581
July	721,980	691,985	579,806	523,913	124,239	120,940
August	673,766	692,526	533,224	530,598	112,097	113,612
September	606,332	674,012	493,534	529,396	94,263	96,320
October	502,956	570,285	436,285	458,497	76,894	79,925
November	376,959	412,419	362,760	367,313	63,254	63,687
December	311,210	350,163	338,648	344,391	60,612	62,592
Year	5,813,682*	6,059,913*	5,445,822*	5,520,910*	1,045,673*	1,062,551*
	Saskatchewan		Alberta		British Columbia	
January	78,355	78,045	84,094	86,502	51,558	56,128
February	80,133	76,037	82,691	81,373	51,831	54,554
March	97,423	91,769	102,270	99,056	61,474	57,484
April	106,365	100,718	113,549	111,866	62,147	62,560
May	123,903	125,973	129,425	130,783	76,577	76,411
June	151,072	152,587	158,678	167,527	75,966	75,104
July	151,288	149,349	164,619	166,352	74,080	71,357
August	138,318	139,271	147,380	160,356	69,293	71,183
September	114,660	116,830	124,525	130,082	64,982	65,354
October	95,746	100,694	102,780	111,746	64,039	62,216
November	80,732	82,771	90,370	91,452	56,732	55,832
December	79,053	80,484	89,267	92,250	57,345	57,727
Year	1,297,256*	1,294,722*	1,390,700*	1,430,982*	769,164*	768,851*

1/ Data for Newfoundland are not available.

* Milk equivalents of cottage cheese and factory cheese other than cheddar, though not shown by months, are included in yearly totals in Provinces so designated.

TABLE V - MILK UTILIZATION (FACTORY PRODUCTS)

(A)-Milk equivalents of factory products,* by months and by Provinces ^{1/}, 1954 and 1955
N.B. Includes items 1, 2 and 3 shown separately for Canada in Table III.

Month	Prince Edward Island		Nova Scotia		New Brunswick	
	1954	1955	1954	1955	1954	1955
	'000 lb.	'000 lb.	'000 lb.	'000 lb.	'000 lb.	'000 lb.
January	5,678	5,458	10,082	9,538	7,334	6,114
February	5,050	4,682	9,307	8,372	6,181	4,796
March	5,903	4,864	10,910	9,780	8,001	7,017
April	7,864	6,958	12,717	11,281	14,691	12,366
May	13,102	12,167	17,045	15,425	23,443	22,540
June	23,564	23,215	26,648	25,442	38,157	38,682
July	25,197	23,618	22,737	20,808	35,696	36,618
August	22,176	21,658	18,341	18,361	31,727	30,534
September	19,645	18,820	17,855	17,998	26,787	27,116
October	14,938	15,104	13,467	14,559	18,950	20,164
November	9,323	10,303	9,302	10,001	10,693	12,155
December	7,635	7,756	9,506	9,644	7,618	8,763
Year	160,575	154,603	178,917	171,209	229,278	226,865
	Quebec		Ontario		Manitoba	
January	65,169	61,772	136,399	144,233	25,414	26,625
February	43,181	41,699	130,353	136,816	29,718	27,604
March	95,823	84,923	191,770	189,091	40,388	37,023
April	233,582	225,026	263,971	266,900	48,560	46,832
May	390,240	406,310	373,302	403,301	64,106	73,291
June	542,113	566,165	462,028	455,392	92,834	93,405
July	518,693	482,849	411,735	353,570	89,952	85,131
August	480,470	485,859	361,634	347,391	78,333	77,276
September	417,526	475,413	321,495	346,253	61,207	61,310
October	305,588	364,829	253,741	271,266	42,445	44,445
November	182,745	211,024	181,875	183,631	28,437	27,286
December	109,299	136,865	154,640	150,572	26,386	26,994
Year	3,384,434	3,542,734	3,243,443	3,248,416	627,780	627,222
	Saskatchewan		Alberta		British Columbia	
January	26,851	28,393	37,667	39,756	17,728	21,151
February	31,101	28,142	40,004	37,593	18,458	19,509
March	41,344	37,691	51,878	48,800	23,358	17,805
April	50,358	45,581	61,817	57,744	25,846	24,398
May	64,549	68,304	76,227	77,873	37,759	37,601
June	95,466	97,058	107,973	115,087	37,895	36,267
July	97,333	96,008	115,552	116,695	35,672	33,312
August	84,840	86,835	100,968	111,591	31,962	31,231
September	63,754	65,377	79,250	82,448	28,481	26,893
October	44,187	48,462	56,659	62,065	26,865	23,468
November	30,678	30,953	45,602	45,108	19,586	17,628
December	27,067	28,753	40,609	42,806	19,314	18,181
Year	657,528	661,557	814,206	837,571	322,924	307,444

^{1/} Data for Newfoundland are not available.

* The figures shown above include three items (1) Creamery Butter (2) Cheddar Cheese and (3) Miscellaneous Products, comprising Ice Cream and Concentrated Milk Products on a milk basis.

TABLE V - MILK UTILIZATION (FLUID MILK)

(B) - Fluid Milk Sales by months and by Provinces 1/, 1954 and 1955

Month	Prince Edward Island		Nova Scotia		New Brunswick	
	1954	1955	1954	1955	1954	1955
	'000 lb.	'000 lb.	'000 lb.	'000 lb.	'000 lb.	'000 lb.
January	2,009	2,093	12,456	12,954	10,664	11,037
February	1,931	1,999	12,082	12,565	10,285	10,645
March	2,157	2,174	13,643	14,352	10,999	11,230
April	1,966	1,984	12,751	13,516	10,949	11,387
May	1,927	1,888	13,013	13,377	10,670	10,627
June	1,903	1,854	12,892	13,214	11,054	11,297
July	1,980	2,016	13,274	13,539	10,692	11,098
August	1,898	1,991	12,892	14,039	10,688	11,661
September	1,892	1,884	12,711	13,156	10,825	11,063
October	1,967	1,914	12,733	13,128	11,011	11,286
November	1,938	1,899	11,877	12,293	10,637	10,924
December	2,041	1,976	13,056	13,513	11,270	11,428
Year	23,609	23,672	153,380	159,646	129,744	133,683
	Quebec		Ontario		Manitoba	
January	139,856	142,234	122,240	125,663	13,553	14,326
February	128,065	130,370	114,759	119,235	12,763	13,912
March	142,812	145,954	132,053	137,203	15,076	15,950
April	133,095	141,081	122,750	129,624	14,187	14,996
May	133,038	139,690	122,011	126,647	14,455	15,351
June	126,709	133,425	117,504	121,029	13,971	14,558
July	133,263	139,793	115,325	120,053	14,078	14,683
August	128,735	141,737	119,610	133,528	13,728	15,513
September	131,405	139,552	120,806	132,524	13,837	15,608
October	137,672	144,693	129,260	135,206	14,499	15,644
November	134,933	140,870	129,257	131,196	15,342	16,431
December	141,759	147,288	129,716	137,499	14,723	16,017
Year	1,611,342	1,686,687	1,475,291	1,548,407	170,212	182,989
	Saskatchewan		Alberta		British Columbia	
January	15,519	16,233	16,719	17,822	21,915	23,033
February	15,452	16,225	16,194	17,166	22,125	23,430
March	17,386	18,099	18,241	19,226	25,609	26,889
April	16,515	17,341	17,434	18,829	24,024	25,465
May	16,843	17,079	17,600	18,234	25,336	25,615
June	16,270	16,970	17,388	18,727	24,874	26,018
July	16,366	16,366	17,443	17,792	24,195	24,268
August	15,853	17,264	16,169	17,964	24,415	26,393
September	15,976	17,174	16,388	17,519	24,119	25,542
October	16,683	17,717	17,648	18,830	24,875	25,970
November	16,860	17,349	17,274	17,879	25,129	25,807
December	17,257	17,930	18,702	19,862	25,234	26,269
Year	196,980	205,747	207,200	219,350	291,850	304,699

1/ Data for Newfoundland are not available.

TABLE V - MILK UTILIZATION (FLUID CREAM)*

(C) - Fluid Cream by months and by Provinces 1/, 1954 and 1955

Month	Prince Edward Island		Nova Scotia		New Brunswick	
	1954	1955	1954	1955	1954	1955
	'000 lb.	'000 lb.	'000 lb.	'000 lb.	'000 lb.	'000 lb.
January	303	313	1,493	1,614	1,403	1,435
February	295	305	1,508	1,650	1,450	1,449
March	339	331	1,741	1,842	1,534	1,540
April	325	329	1,634	1,784	1,548	1,548
May	324	311	1,734	1,744	1,466	1,466
June	335	314	1,981	2,272	1,552	1,707
July	453	429	2,647	2,576	2,069	2,181
August	368	381	1,938	1,988	1,561	1,723
September	331	324	1,659	1,764	1,399	1,484
October	325	324	1,651	1,639	1,468	1,493
November	328	306	1,529	1,621	1,374	1,456
December	352	326	1,774	1,914	1,515	1,530
Year	4,078	3,993	21,289	22,408	18,339	19,012
	Quebec		Ontario		Manitoba	
January	25,029	25,029	20,908	21,159	3,956	4,039
February	25,873	25,951	18,987	19,898	3,728	3,944
March	25,195	24,817	23,006	23,972	4,264	4,486
April	25,381	26,726	20,918	22,006	4,072	4,267
May	25,716	26,539	21,395	21,138	4,217	4,306
June	26,540	29,353	20,346	22,726	4,071	4,299
July	29,760	28,361	18,893	17,929	3,804	3,930
August	27,180	27,071	19,727	19,747	4,074	3,964
September	22,688	23,686	19,219	20,622	3,828	4,077
October	24,873	24,625	20,040	21,082	4,381	4,591
November	23,744	24,385	20,480	21,484	4,517	4,612
December	25,613	26,996	22,373	24,610	4,265	4,555
Year	307,592	313,539	246,292	256,373	49,177	51,070
	Saskatchewan		Alberta		British Columbia	
January	3,924	3,834	4,991	5,046	6,229	6,254
February	3,647	3,629	4,542	4,733	6,192	6,365
March	4,559	4,591	5,652	5,867	6,977	7,054
April	3,864	3,953	5,516	5,968	6,474	6,830
May	3,720	3,601	5,003	5,038	6,617	6,690
June	3,594	3,637	6,015	6,003	6,448	6,564
July	4,790	4,804	5,152	5,379	7,474	7,452
August	4,669	4,291	5,366	5,645	6,528	7,037
September	4,484	4,291	5,364	5,562	6,295	6,641
October	4,669	4,571	5,734	5,969	6,208	6,537
November	4,404	4,448	5,174	5,334	6,483	6,677
December	4,741	4,625	5,497	5,761	7,133	7,644
Year	51,065	50,275	64,006	66,305	79,058	81,745

1/ Data for Newfoundland are not available

* Cream Expressed as Milk

TABLE V - MILK UTILIZATION (CONSUMED IN FARM-HOMES)*

(D) Consumption of Milk in Farm Homes by months and by Provinces 1/, 1954 and 1955

Month	Prince Edward Island		Nova Scotia		New Brunswick	
	1954	1955	1954	1955	1954	1955
	'000 lb.	'000 lb.	'000 lb.	'000 lb.	'000 lb.	'000 lb.
January	1,700	1,650	3,860	4,000	3,560	3,820
February	1,440	1,480	3,400	3,520	3,200	3,290
March	1,730	1,570	3,940	4,120	3,650	4,010
April	1,640	1,520	3,860	4,000	3,390	4,130
May	1,740	1,700	4,050	4,120	3,800	4,380
June	1,770	1,720	4,170	4,200	3,690	4,200
July	1,810	1,820	4,500	4,580	4,320	4,830
August	1,770	1,860	4,460	4,440	4,190	5,120
September	1,700	1,670	4,190	4,170	3,940	4,970
October	1,680	1,690	4,480	4,170	4,060	4,670
November	1,560	1,540	4,080	3,960	4,020	4,200
December	1,700	1,570	4,040	4,000	4,060	4,410
Year	20,240	19,790	49,030	49,280	45,880	52,030
	Quebec		Ontario		Manitoba	
January	22,000	21,100	18,300	18,000	7,820	7,580
February	19,400	18,400	16,800	16,400	7,040	6,900
March	21,100	21,200	18,800	18,500	7,880	8,070
April	21,900	22,700	18,200	18,500	7,800	8,070
May	24,100	25,200	19,300	19,800	8,580	8,800
June	23,900	25,500	19,100	19,400	8,670	8,710
July	26,100	27,500	19,700	20,400	8,840	9,320
August	25,800	27,000	19,900	20,200	8,840	9,410
September	23,700	24,800	18,500	19,000	8,310	8,850
October	23,700	25,000	19,100	19,400	8,310	8,670
November	22,500	23,200	18,000	18,800	7,650	8,410
December	22,000	23,900	18,200	18,800	7,730	8,240
Year	276,200	285,500	223,900	227,200	97,470	101,030
	Saskatchewan		Alberta		British Columbia	
January	13,100	13,200	11,000	10,800	2,810	2,710
February	12,200	11,700	9,100	10,000	2,360	2,440
March	13,800	13,100	10,500	10,700	2,600	2,760
April	14,200	13,100	10,600	11,300	2,600	2,730
May	15,200	14,700	11,400	11,900	2,010	3,080
June	14,700	14,800	11,600	11,900	2,940	2,930
July	15,100	15,200	11,700	12,600	3,090	3,080
August	15,400	15,400	11,900	12,600	3,120	3,080
September	14,300	14,300	11,400	11,600	2,870	2,860
October	14,600	14,200	11,100	11,700	2,810	2,800
November	13,400	13,600	10,700	11,000	2,610	2,740
December	13,700	13,300	11,400	11,000	2,660	2,770
Year	169,700	166,600	132,400	137,100	33,380	33,980

1/ Data for Newfoundland are not available.

*Note: Data covering milk consumption in farm homes include cream expressed as milk.

TABLE V - MILK UTILIZATION (FED TO LIVE STOCK)

(E) Milk Fed to Live Stock by months, and by Provinces ^{1/}, 1954 and 1955

Month	Prince Edward Island		Nova Scotia		New Brunswick	
	1954	1955	1954	1955	1954	1955
	'000 lb.	'000 lb.	'000 lb.	'000 lb.	'000 lb.	'000 lb.
January	312	272	1,210	997	426	414
February	275	408	1,060	1,040	422	484
March	484	645	1,230	1,220	781	808
April	794	1,090	1,620	1,770	1,110	1,340
May	953	970	1,680	1,650	1,550	1,340
June	953	834	1,290	1,480	1,180	951
July	848	509	1,200	1,520	1,160	647
August	543	443	1,030	1,160	812	492
September	440	297	1,020	1,220	715	374
October	339	247	1,040	1,270	572	374
November	315	222	926	991	389	228
December	296	215	898	1,270	342	212
Year	6,552	6,152	14,204	15,588	9,459	7,664
	Quebec		Ontario		Manitoba	
January	3,980	4,310	12,900	13,000	3,400	3,820
February	4,660	5,470	13,700	13,000	4,560	3,930
March	16,800	17,800	20,000	18,700	5,750	6,250
April	29,200	32,800	23,400	22,600	7,070	6,690
May	20,400	24,600	23,200	21,000	6,860	5,890
June	11,200	12,300	16,500	15,300	5,420	4,420
July	7,700	8,240	12,000	10,300	3,470	3,360
August	5,310	5,360	10,200	8,860	2,910	3,260
September	4,250	4,290	10,300	8,680	3,080	2,380
October	4,080	4,680	10,400	9,460	2,860	2,480
November	4,450	3,650	10,200	9,370	3,400	2,900
December	4,630	4,420	11,800	10,500	3,600	3,510
Year	116,660	127,920	175,100	160,770	52,380	48,890
	Saskatchewan		Alberta		British Columbia	
January	9,110	6,510	8,710	7,860	1,800	1,740
February	8,560	6,770	7,750	6,920	1,760	1,710
March	10,600	8,530	10,500	9,760	1,900	1,830
April	11,600	10,400	12,800	12,900	2,010	1,850
May	12,200	10,800	12,900	12,000	2,270	1,810
June	9,880	8,750	9,290	9,960	1,820	1,430
July	6,420	5,950	8,360	8,270	1,730	1,490
August	6,160	4,460	6,940	7,440	1,700	1,710
September	4,990	4,550	6,320	7,220	1,720	1,780
October	4,890	5,050	6,070	7,730	1,690	1,990
November	4,790	5,610	5,770	6,960	1,590	1,810
December	6,320	5,720	7,560	7,860	1,670	1,740
Year	95,520	83,100	102,970	104,880	21,660	20,890

^{1/} Data for Newfoundland are not available.

APPENDIX

CONVERSION RATES

N.B. To obtain the butter-fat or milk equivalent, multiply the gallons or pounds of product by the conversion rates shown under respective headings below.

lb. Product	Lb. B.F.*	Lb. Milk
Butter.....	.82	23.4
Cheese (Cheddar and other factory cheese made from whole milk).....	.38	11
Ice Cream (gallons).....	.60	17
Cottage Cheese (creamed).....	.03	.86
Cream Cheese.....	.36	10.3
Condensed Milk.....	.08	2.3
Evaporated Milk.....	.08	2.3
Whole Milk Powder.....	.28	8.0
Cream Powder.....	.735	21.0
Malted Milk.....	.087	2.5
Condensed Coffee.....	.078	2.22
Condensed Skim Milk.....	- Skim Milk	3
Evaporated Skim Milk.....	- " "	3
Skim Milk Powder.....	- " "	11
Casein.....	- " "	33
Cottage Cheese.....	- " "	7
Condensed Buttermilk.....	- Buttermilk	3
Buttermilk Powder.....	- "	12
Lactose (Sugar of Milk).....	- Whey	22
Whey Powder.....	- "	20.00

* Butter-fat is converted to milk testing 3.5 per cent.

PART III

TABLE 1 - FARM PRICES OF DAIRY PRODUCTS

By Provinces 1/, by Months, 1955

Month	Prince Edward Island				Nova Scotia				New Brunswick				
	Cream'y B.F.	Cheese Milk	Mfg.2/ Milk	Fluid Milk	Cream'y B.F.	Cheese Milk	Mfg.2/ Milk	Fluid Milk	Cream'y B.F.	Cheese Milk	Mfg.2/ Milk	Fluid Milk	
	¢ per lb.	\$ per cwt.			¢ per lb.	\$ per cwt.			¢ per lb.	\$ per cwt.			
January	61.4	2.05	2.54	3.75	65.5	-	2.40	4.58	63.5	2.27	4.55	4.56	
February	61.4	2.05	2.51	3.78	65.5	-	2.46	4.57	63.5	2.27	4.41	4.55	
March	61.4	2.05	2.61	3.79	65.5	-	2.57	4.57	63.5	2.31	4.51	4.56	
April	61.4	2.05	2.61	3.75	64.5	-	2.49	4.31	62.5	2.28	4.53	4.55	
May	60.4	2.01	2.38	3.73	62.5	-	2.51	4.32	58.5	2.28	4.52	4.56	
June	59.4	2.01	2.40	3.77	59.0	-	2.36	4.33	56.5	2.20	4.38	4.58	
July	59.4	2.01	2.24	3.74	58.5	-	2.63	4.33	56.5	2.27	4.50	4.55	
August	59.4	2.01	2.46	3.75	60.0	-	2.80	4.32	57.5	2.24	4.44	4.57	
September	61.4	2.05	2.59	3.84	61.0	-	2.55	4.35	59.5	2.24	4.55	4.58	
October	61.4	2.05	2.74	3.86	61.5	-	2.48	4.61	60.5	2.24	4.55	4.59	
November	61.4	2.05	2.82	3.84	61.5	-	2.98	4.62	60.5	2.24	4.56	4.59	
December	61.4	2.05	2.87	3.84	61.5	-	2.62	4.61	60.5	2.24	4.57	4.59	
Year	60.4	2.03	2.54	3.79	61.5	-	2.55	4.46	58.8	2.25	4.49	4.57	
		Quebec				Ontario				Manitoba			
January	66.0	2.41	2.62	4.20	61.8	2.30	2.40	4.30	59.0	2.17	3.01	3.99	
February	66.0	2.44	2.55	4.19	61.8	2.23	2.35	4.30	59.2	2.14	2.51	3.99	
March	66.0	2.44	2.48	4.20	61.0	2.15	2.33	4.30	59.3	2.21	2.50	4.00	
April	65.0	2.41	2.24	4.16	58.3	2.02	2.21	4.30	57.9	2.38	2.59	3.97	
May	63.0	2.36	2.31	4.18	57.0	1.92	2.19	4.31	56.7	2.46	2.47	3.96	
June	62.0	2.26	2.28	4.18	56.8	2.01	2.13	4.29	55.8	2.39	2.19	3.93	
July	62.0	2.26	2.36	4.14	57.5	2.00	2.20	4.27	55.7	2.30	2.47	3.92	
August	62.0	2.31	2.47	4.13	58.1	2.07	2.29	4.27	55.8	2.31	2.47	3.93	
September	62.0	2.31	2.60	4.19	58.3	2.16	2.33	4.28	56.3	2.35	2.47	3.98	
October	62.5	2.31	2.69	4.15	58.4	2.35	2.49	4.32	56.6	2.63	2.58	4.02	
November	62.5	2.41	2.87	4.15	58.4	2.44	2.59	4.34	57.2	2.65	2.61	4.02	
December	62.0	2.46	2.88	4.14	58.8	2.55	2.60	4.34	57.3	2.63	2.71	4.01	
Year	62.6	2.33	2.47	4.17	58.4	2.11	2.31	4.30	56.8	2.39	2.48	3.98	
		Saskatchewan				Alberta				British Columbia			
January	60.7	2.26	2.87	4.49	63.2	2.39	2.73	4.63	62.6	2.85	3.13	5.11	
February	60.9	2.26	2.83	4.44	63.2	2.38	2.68	4.61	63.0	2.82	4.13	5.16	
March	60.8	2.26	2.81	4.44	63.2	2.38	2.66	4.61	63.2	2.81	3.75	5.18	
April	59.9	2.23	2.98	4.40	62.1	2.35	2.64	4.58	67.2	2.79	3.95	5.15	
May	58.3	2.21	2.74	3.86	59.4	2.25	2.47	4.56	63.8	2.69	3.58	5.10	
June	57.5	2.16	2.54	3.70	58.8	2.22	2.36	4.54	60.3	2.65	3.61	5.10	
July	57.5	2.11	2.53	3.76	58.4	2.23	2.48	4.57	58.3	2.66	3.75	5.19	
August	57.7	2.11	2.53	3.82	58.5	2.27	2.55	4.58	58.1	2.63	3.86	5.24	
September	58.1	2.15	2.76	3.95	59.6	2.34	2.66	4.62	60.6	2.74	3.77	5.22	
October	58.4	2.26	2.69	4.47	60.8	2.38	2.78	4.63	59.2	2.85	4.21	5.28	
November	58.8	2.36	2.90	4.53	61.1	2.46	2.49	4.64	60.0	3.25	2.82	5.17	
December	59.3	-	3.03	4.48	61.1	2.46	2.65	4.62	63.2	3.25	4.01	5.15	
Year	58.5	2.19	2.70	4.20	60.1	2.32	2.59	4.60	61.5	2.79	3.82	5.17	

1/ Data for Newfoundland are not available.

2/ Manufacturing Milk Prices include those of Ice Cream Milk, and Whole Milk used in Concentration.

TABLE II - FARM CASH INCOME FROM DAIRY PRODUCTS

Canada 1/, by Products, by Months, 1954 and 1955

N.B. Data are revised and differ from those published in DAIRY REVIEW, JAN.-NOV. 1955

Month	Total Income 2/		(1) Creamery Butter-Fat		(2) Cheese Milk	
	1954	1955	1954	1955	1954	1955
	\$'000	\$'000	\$'000	\$'000	\$'000	\$'000
January	25,430	25,962	5,574	5,620	570	499
February	24,487	24,389	5,458	4,841	499	423
March	29,915	29,411	7,563	6,994	784	662
April	33,751	33,992	11,934	11,259	1,190	1,113
May	40,952	42,286	17,063	17,796	2,197	2,091
June	47,786	48,752	22,730	23,130	3,237	2,988
July	46,323	44,712	21,477	19,714	2,862	2,342
August	43,340	44,985	19,350	19,194	2,848	2,394
September	39,756	42,903	16,848	18,067	2,559	2,524
October	35,296	38,416	12,535	14,203	2,002	2,024
November	29,991	30,912	8,677	9,146	1,153	1,137
December	28,021	29,397	6,682	7,000	707	701
Year	426,901*	437,994*	155,891	157,014	22,461*	20,780*
	(3) Manufacturing Milk 3/		(4) Manufacturing Cream 3/		(5) Dairy Butter	
January	1,068	1,139	406	502	83	49
February	1,167	1,344	487	494	74	47
March	1,745	1,494	681	688	87	60
April	2,042	2,166	746	842	83	74
May	2,856	2,844	1,029	1,215	98	85
June	3,194	3,126	1,354	1,450	99	86
July	2,926	2,833	1,495	1,807	91	78
August	2,461	2,977	1,310	1,526	95	81
September	2,153	2,901	822	915	87	78
October	1,786	2,291	639	662	81	71
November	1,317	1,274	601	586	72	74
December	1,211	1,453	551	532	62	70
Year	23,926	25,842	10,121	11,219	1,012	853
	(6) Fluid Milk		(7) Fluid Cream		1/ Statistics for Newfoundland are not available. 2/ Total income data represent addition of items 1 to 7. 3/ The term "Manufacturing" as applied to both milk and cream refers to the income from the sale of these two products used for the manufacture of both ice cream and concentrated milk products.	
January	15,540	15,854	2,189	2,299		
February	14,618	14,999	2,184	2,241		
March	16,552	17,003	2,503	2,510		
April	15,463	16,151	2,293	2,382		
May	15,375	15,835	2,333	2,420		
June	14,780	15,305	2,392	2,617		
July	14,958	15,342	2,514	2,596		
August	14,884	16,200	2,392	2,613		
September	15,125	16,112	2,163	2,306		
October	16,040	16,707	2,213	2,458		
November	15,898	16,293	2,273	2,402		
December	16,406	17,006	2,402	2,635		
Year	185,639	192,807	27,851	29,479		

* Yearly totals so indicated include income for cottage cheese and factory cheese other than cheddar.

TABLE III - TOTAL FARM CASH INCOME FROM DAIRY PRODUCTS

By Provinces 1/, by months, 1954 and 1955

N.B. Data are revised and differ from those published in DAIRY REVIEW, Jan.-Nov.1955

Month	Prince Edward Island		Nova Scotia		New Brunswick	
	1954	1955	1954	1955	1954	1955
	\$'000	\$'000	\$'000	\$'000	\$'000	\$'000
January	211	211	891	893	728	709
February	192	191	864	849	632	660
March	223	201	973	975	763	748
April	255	239	937	924	905	868
May	358	342	1,039	1,007	1,061	1,043
June	566	570	1,236	1,222	1,383	1,385
July	601	585	1,193	1,152	1,329	1,356
August	534	541	1,070	1,110	1,240	1,259
September	482	490	1,026	1,055	1,132	1,164
October	397	412	962	1,012	974	1,029
November	302	311	841	873	797	840
December	257	261	910	929	758	784
Year	4,380	4,354	11,948 *	12,007 *	11,753*	11,846*
	Quebec		Ontario		Manitoba	
January	8,136	8,230	9,222	9,351	1,199	1,236
February	7,208	7,258	9,010	8,830	1,243	1,230
March	9,096	8,962	10,874	10,836	1,571	1,526
April	11,756	11,836	11,662	11,856	1,674	1,668
May	15,359	15,773	13,821	14,392	1,967	2,200
June	18,267	18,970	15,346	15,221	2,480	2,542
July	18,073	17,430	13,996	13,099	2,445	2,371
August	16,345	17,616	13,448	13,667	2,208	2,240
September	15,428	17,204	12,740	13,699	1,872	1,954
October	13,278	15,048	11,792	12,505	1,546	1,645
November	10,644	11,442	10,425	10,480	1,319	1,340
December	9,311	10,106	9,903	10,142	1,247	1,307
Year	154,029*	160,426*	143,298*	145,227*	20,819*	21,317*
	Saskatchewan		Alberta		British Columbia	
January	1,337	1,454	1,736	1,886	1,870	1,992
February	1,466	1,430	1,791	1,789	2,026	2,152
March	1,786	1,745	2,167	2,175	2,462	2,243
April	1,887	1,841	2,296	2,330	2,379	2,430
May	2,060	2,170	2,581	2,638	2,706	2,721
June	2,582	2,700	3,233	3,446	2,693	2,696
July	2,713	2,696	3,370	3,411	2,603	2,612
August	2,446	2,542	3,012	3,332	2,537	2,678
September	2,063	2,136	2,576	2,746	2,437	2,455
October	1,801	1,922	2,191	2,409	2,353	2,434
November	1,550	1,562	1,965	1,995	2,148	2,069
December	1,507	1,544	1,943	2,036	2,185	2,283
Year	23,253*	23,746*	23,936*	30,219*	28,485*	28,852*

1/ Data for Newfoundland are not available.

* Yearly totals for Provinces so designated include income from Cottage Cheese and Cheese other than Cheddar, not shown by months.

TABLE IV - FARM CASH INCOME FROM MILK AND CREAM USED IN FLUID SALES

By Provinces 1/, by Months, 1954 and 1955

Month	Prince Edward Island		Nova Scotia		New Brunswick	
	1954	1955	1954	1955	1954	1955
	\$'000	\$'000	\$'000	\$'000	\$'000	\$'000
January	85	89	640	663	540	555
February	81	86	620	646	524	537
March	91	94	703	737	560	570
April	83	85	619	654	554	570
May	81	81	634	649	541	542
June	80	81	636	664	565	579
July	88	89	674	690	563	588
August	83	87	635	689	551	601
September	83	84	618	644	553	564
October	87	85	653	679	559	572
November	86	84	614	640	540	556
December	88	87	679	706	568	578
Year	1,016	1,032	7,725	8,061	6,618	6,812
	Quebec		Ontario		Manitoba	
January	6,531	6,732	6,084	6,114	658	683
February	6,119	6,239	5,699	5,782	613	654
March	6,778	6,912	6,614	6,684	711	752
April	6,346	6,660	6,109	6,271	671	708
May	6,366	6,670	6,056	6,194	688	727
June	6,140	6,516	5,791	5,963	658	697
July	6,503	6,740	5,627	5,779	663	693
August	6,209	6,801	5,864	6,399	663	715
September	6,187	6,603	5,880	6,330	664	733
October	6,440	6,840	6,256	6,545	699	753
November	6,353	6,631	6,300	6,405	731	786
December	6,704	6,967	6,369	6,770	707	759
Year	76,676	80,311	72,649	75,236	8,126	8,660
	Saskatchewan		Alberta		British Columbia	
January	803	840	937	986	1,451	1,491
February	738	822	892	939	1,466	1,535
March	882	934	1,020	1,075	1,696	1,755
April	820	873	974	1,050	1,580	1,652
May	739	759	966	992	1,637	1,641
June	697	723	986	1,042	1,619	1,687
July	743	740	972	983	1,639	1,686
August	739	772	919	1,004	1,613	1,745
September	766	793	930	939	1,607	1,678
October	893	920	998	1,057	1,668	1,714
November	903	915	957	1,004	1,687	1,674
December	927	938	1,031	1,096	1,735	1,740
Year	9,700	10,029	11,582	12,217	19,398	19,928

1/ Data for Newfoundland are not available.

TABLE V - FARM CASH INCOME FROM MILK USED IN FLUID MILK SALES
By Provinces ^{1/}, by months, 1954 and 1955

Month	Prince Edward Island		Nova Scotia		New Brunswick	
	1954	1955	1954	1955	1954	1955
	\$'000	\$'000	\$'000	\$'000	\$'000	\$'000
January	75	78	577	593	488	503
February	71	76	554	574	470	484
March	80	83	627	656	502	512
April	73	74	553	583	498	518
May	71	70	563	578	487	485
June	69	70	558	572	505	517
July	74	76	572	586	489	505
August	71	74	560	607	489	533
September	72	72	551	572	498	507
October	76	74	583	605	504	518
November	74	73	547	568	487	501
December	77	76	602	623	514	525
Year	883	896	6,847	7,117	5,931	6,108
	Quebec		Ontario		Manitoba	
January	5,860	5,974	5,403	5,403	542	572
February	5,366	5,463	5,072	5,127	507	555
March	5,984	6,130	5,837	5,900	597	638
April	5,590	5,869	5,425	5,574	560	596
May	5,574	5,839	5,356	5,458	572	608
June	5,296	5,577	5,111	5,192	549	572
July	5,583	5,787	5,005	5,126	553	575
August	5,394	5,854	5,191	5,659	541	609
September	5,506	5,847	5,255	5,672	555	621
October	5,714	6,005	5,649	5,841	588	629
November	5,600	5,846	5,649	5,694	620	661
December	5,954	6,098	5,656	5,968	592	642
Year	67,421	70,289	64,609	66,614	6,776	7,278
	Saskatchewan		Alberta		British Columbia	
January	691	729	771	825	1,133	1,777
February	685	720	745	791	1,148	1,209
March	754	804	837	887	1,334	1,393
April	715	763	802	862	1,247	1,312
May	645	659	807	832	1,300	1,306
June	607	628	796	850	1,289	1,327
July	620	615	801	813	1,261	1,259
August	618	659	746	822	1,274	1,383
September	647	679	762	809	1,279	1,333
October	766	792	822	872	1,338	1,371
November	777	786	800	830	1,344	1,334
December	792	803	864	918	1,355	1,353
Year	8,317	8,637	9,553	10,111	15,302	15,757

^{1/} Data for Newfoundland are not available.

STATISTICS CANADA LIBRARY
BIBLIOTHEQUE STATISTIQUE CANADA



1010758065