

DEC 27 1947

23-001
C.2

Published by authority of the Hon. James A. MacKinnon, M.P., Minister of Trade and Commerce

DOMINION BUREAU OF STATISTICS

MONTHLY DAIRY REVIEW OF CANADA 1947

STATISTICS STATISTIQUE
CANADA CANADA

APR 14 1947

LIBRARY
BIBLIOTHÈQUE

Dominion Statistician:
Director, Agricultural Division:
In Charge of Dairy Statistics:

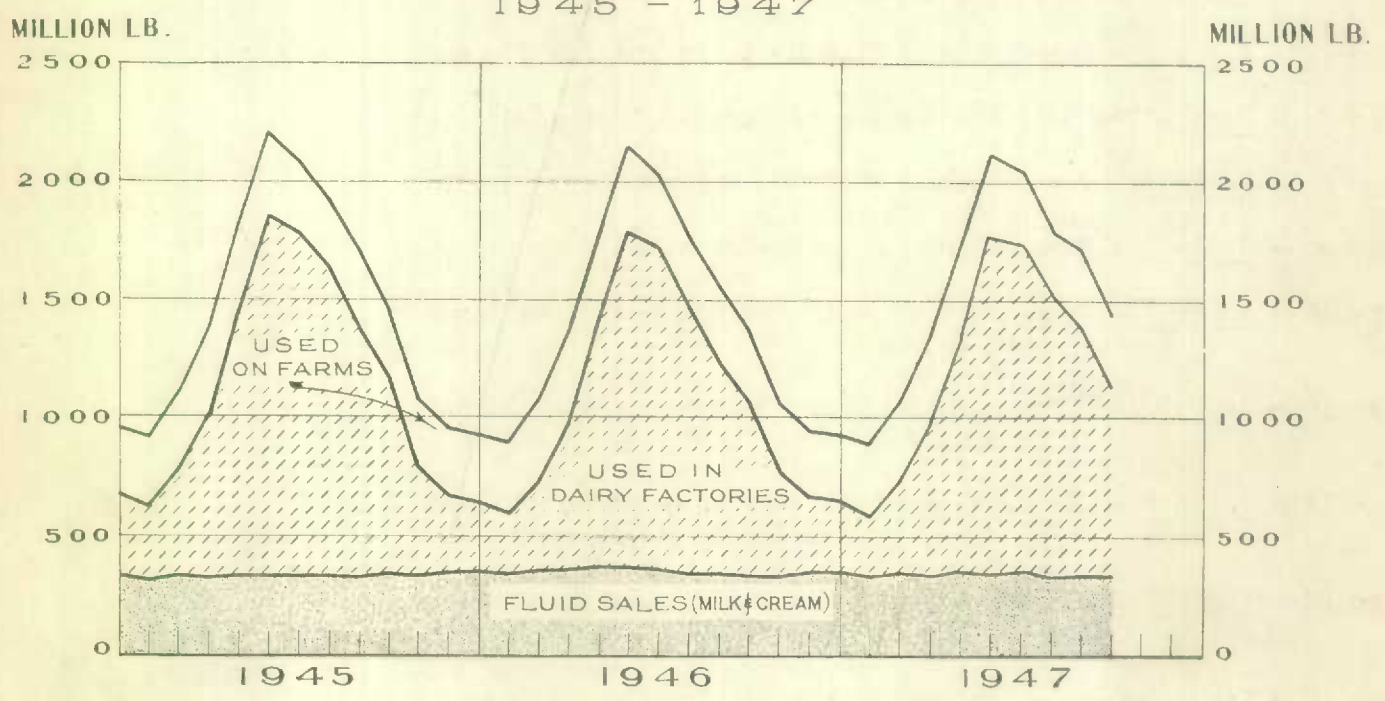
Herbert Marshall
C. V. Parker
P. H. Ferguson

Volume No. VIII. Report No. 11

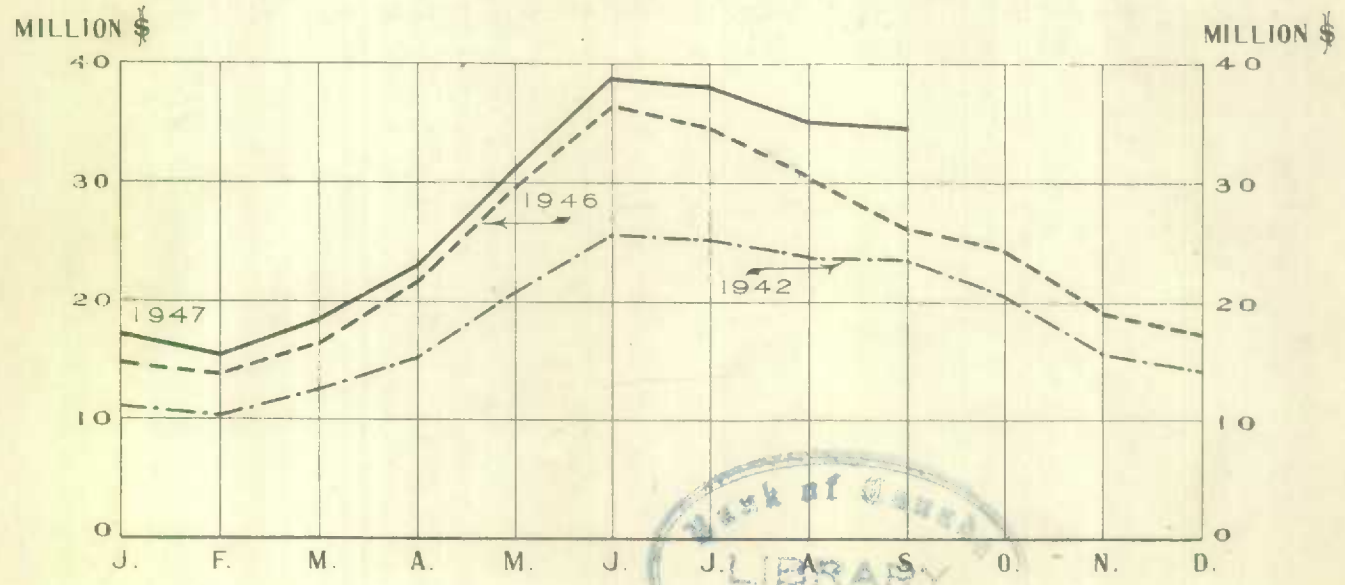
November

Published December 23, 1947.

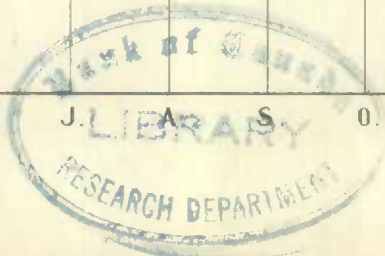
MILK PRODUCTION AND UTILIZATION 1945 - 1947



SALES INCOME FROM DAIRYING



Price: \$1.00 a year



CONTENTS

- Page 1 - Summary - The Dairy Position in Brief
- Page 2 - Table 1 - The Butter Position in Canada
- Page 3 - Text - The Dairy Situation in Canada
- Page 4 - Table 2 - The Cheese Position in Canada
- Page 5 - Text - The Dairy Situation in Canada (Continued)
- Page 6 - Table 3 - Concentrated Milk Products and Ice Cream
- Page 7 - Text - The Dairy Situation in Canada (Concluded)
- Page 8 - Table 4 - Concentrated Whole Milk Products
- Page 9 - Table 5 - Concentrated Milk By-Products
- Page 10 - Table 6 - Production of Milk Per Cow and Percentages of Cows Milking
- Page 10 - Table 7 - Production of Dairy Butter and Whey Butter in Canada.
- Page 11 - Table 8 - Utilization of Milk in Percentage of Total Milk Production, in Canada, by Provinces.
- Page 12 - Table 9-A-Milk Production and Utilization in Canada, October, 1945, 1946 and 1947, by Provinces
- Page 13 - Table 9-B-Milk Production and Utilization in Canada, October, 1945, 1946 and 1947, by Provinces
- Page 14 - Table 10 - Farm Income From Dairying and Average Prices per Hundred pounds of Milk.

--- 000 0 000 ---

THE DAIRY POSITION IN BRIEF

The production of creamery butter in the month of November exceeded that produced in the same month of the preceding year by approximately $8\frac{1}{2}$ per cent.

The quantity of creamery butter produced during the eleven-month period, January to November, exceeded that of the same period of the previous year by approximately 7 per cent.

While the total butter supply in the month of November was 6 per cent greater than that in the same month of the preceding year, the domestic disappearance increased by nearly $11\frac{1}{2}$ per cent.

Wholesale butter prices at Montreal quoted by the Canadian Commodity Exchange averaged $60\frac{3}{8}$ cents per pound in November as against 40 cents in the same month of 1946. Cheese prices averaged 26 cents as against 23 cents in the same month of the previous year.

The total farm milk production of Canada in the month of October advanced nearly 7 per cent above that of October, 1946. All provinces with the exception of Prince Edward Island and Nova Scotia reflected this advance in production.

Fluid sales in the month of October were practically on a par with those of the same month last year. Fluid milk declined 3 per cent while fluid cream on a milk basis increased 16 per cent. Sales of milk and cream by provinces indicated the same situation with the exception of Prince Edward Island and British Columbia where provincial trends were the opposite to those of the Dominion.

Milk used in dairy factory production during October moved up approximately $13\frac{1}{2}$ per cent from the same month last year.

Total income from dairying during September was 32 per cent greater than that recorded in the same month of the previous year, and the average price was \$2.44 as against \$2.10 per hundred in the corresponding month of 1946.

The total numbers of milch cows on farms showed practically no change in **October** as compared with the same month a year ago. However, the percentage of cows milked advanced one-half of one per cent.

Relatively higher temperatures and light precipitation were reported from most sections of the Dominion during November. There was a long pasture season and winter did not set in until late in the month. Higher feed prices have added materially to production costs. It is believed, therefore, that milk production during the winter months will fall considerably below the 1946-47 level.

Table 1. - THE BUTTER POSITION IN CANADA

November, and January - November, 1935 to 1947.

Year	Creamery Butter		Dairy Butter 1/		Total Butter 2/	
	November	Jan.-Nov.	November	Jan.-Nov.	November	Jan.-Nov.
PRODUCTION						
	'000 lb.	'000 lb.	'000 lb.	'000 lb.	'000 lb.	'000 lb.
1935	12,971	230,520	6,501	91,825	19,538	323,633
1936	13,554	240,143	6,374	89,902	20,003	331,505
1937	13,303	237,210	6,273	88,316	19,668	327,298
1938	14,694	256,088	6,099	85,752	20,884	343,613
1939	15,407	255,707	5,862	82,415	21,360	339,891
1940	15,085	252,394	5,640	79,405	20,825	333,763
1941	14,954	273,753	5,539	78,032	20,601	353,892
1942	16,973	269,904	5,258	74,003	22,365	346,533
1943	15,766	299,344	3,709	52,231	19,585	353,722
1944	16,517	286,392	3,658	51,157	20,322	340,138
1945	14,329	283,220	3,517	49,956	17,981	335,939
1946	13,859	261,113	3,613	50,806	17,597	314,145
1947	15,051	279,820	3,667	52,588	18,790	334,275
DOMESTIC DISAPPEARANCE IN POUNDS PER CAPITA						
1935	1.85	19.76	.60	8.48	2.46	28.36
1936	2.06	20.36	.59	8.21	2.66	28.71
1937	1.97	20.94	.58	8.01	2.56	29.11
1938	2.13	20.85	.55	7.66	2.69	28.67
1939	1.95	21.14	.52	7.34	2.48	28.64
1940	2.19	22.01	.50	6.96	2.70	29.14
1941	2.22	21.93	.48	6.79	2.71	28.90
1942	2.49	24.10	.45	6.35	2.95	30.67
1943	2.16	21.50	.34	4.41	2.51	26.09
1944	2.29	23.03	.30	4.27	2.60	27.52
1945	2.28	22.09	.29	4.13	2.59	26.44
1946	1.92	19.22	.29	4.13	2.23	23.53
1947	2.13	21.53	.29	4.25	2.43	25.94
NOVEMBER MAKE, 1935 to 1947, EXPRESSED AS INDEXES OF THE SAME MONTH IN 1939 AND 1946 3/						
	1939	1946	1939	1946	1939	1946
	%	%	%	%	%	%
1935	84.2	93.6	110.9	179.9	91.5	111.0
1936	88.0	97.8	108.7	176.4	93.6	113.7
1937	86.3	96.0	107.0	173.6	92.1	111.8
1938	95.4	106.0	104.0	168.8	97.8	118.7
1939	100.0	111.2	100.0	162.2	100.0	121.4
1940	97.9	108.2	96.2	156.1	97.5	118.3
1941	97.1	107.9	94.5	153.3	96.4	117.1
1942	110.2	122.5	89.7	145.5	104.7	127.1
1943	102.3	113.8	63.3	102.7	91.7	111.3
1944	107.2	119.2	62.4	101.2	95.1	115.5
1945	93.0	103.4	60.0	97.3	84.2	102.2
1946	90.0	100.0	61.6	100.0	82.4	100.0
1947	97.7	108.6	62.6	101.5	88.0	106.8

1/ Data for November, 1947 are preliminary; revisions for October appear on Table 7.

2/ Includes Whey Butter amounting to 125,300 pounds in November, 1946 and 71,545 pounds in November, 1947.

3/ Note the base index in each column is shown as 100.

THE BUTTER SITUATION

Production: Creamery butter production in November reached a total of 15 million pounds, exceeding that of the same month of the previous year by $1\frac{1}{4}$ million pounds. The dairy butter make moved up to approximately $3\frac{5}{8}$ million pounds, while whey butter fell to 71,500 pounds. Comparisons made with November, 1946, therefore, indicate increases in the creamery and dairy make, but a substantial decline in whey butter production.

Total Supply: The supply of total butter (creamery, dairy and whey), which is represented by stocks at beginning plus November production, amounted to approximately 90 million pounds. This was a gain of 5 million pounds in comparison with the total supply of November, 1946. This improvement may be credited to the high production in recent months which placed creamery butter stocks of December 1 at approximately $59\frac{1}{4}$ million pounds, nearly $2\frac{1}{2}$ million pounds above those of the same date last year. However, the seasonal decline in creamery butter stocks between November 1 and December 1 was $11\frac{5}{8}$ million pounds, whereas a year ago there was a difference of only $10\frac{1}{4}$ million pounds in the holdings reported on these two dates.

Domestic disappearance: The domestic disappearance of total butter advanced to a little more than $30\frac{1}{2}$ million pounds in November as against 34 million pounds in October and $27\frac{1}{2}$ million in November, 1946. In pounds per capita, the November disappearance was 2.43 in comparison with 2.69 last month and 2.23 pounds in the same month last year.

SUPPLIES OF OTHER FACTORY PRODUCTS

Cheddar Cheese Production: The output of cheddar cheese fell to approximately $3\frac{1}{2}$ million pounds in November, a decline of slightly over $1\frac{1}{4}$ million pounds from the same month last year. The quantity manufactured during the eleven-month period, January to November was slightly over 114 million pounds, representing a reduction of about 27 million pounds as compared with that produced in the same period a year ago. It may be noted from Table 2 that the November make and the total manufactured during the eleven-month period was the lowest ever recorded during the twelve years for which statistics are available.

Concentrated Milk Products: An analysis of production figures indicate that the trend is still moving in an upward direction. The November output of concentrated whole milk products advanced to 13 million pounds, while the total quantity of whole milk products manufactured during the period, January to November, moved up to 249 million pounds. Compared with the corresponding period of the previous year, the November production represented an increase of nearly 2 million pounds while the cumulative output for the eleven-month period moved up almost 18 million pounds. The domestic disappearance of concentrated whole milk products per capita (see Table 3), was 1.21 pounds in November in comparison with .85 pounds in the same month last year. The domestic disappearance of milk by-products was .28 pounds as against .31 pounds in November, 1946.

Ice Cream: The quantity of ice cream manufactured in November amounted to nearly $1\frac{1}{4}$ million gallons in comparison with approximately three-quarters of a million gallons a year ago. The November make exceeded all previous records for that month. The quantity of ice cream manufactured in the eleven-month period of 1947 was $22\frac{3}{4}$ million gallons. This compares with $15\frac{1}{4}$ million gallons in the January-November period of 1946.

Table 2 - THE CHEESE POSITION IN CANADA

November, and January - November, 1935 to 1947.

Year	Cheddar Cheese 1/		Other Cheese		Total Cheese 2/	
	November	Jan.-Nov.	November	Jan.-Nov.	November	Jan.-Nov.
	PRODUCTION					
	'000 lb.	'000 lb.	'000 lb.	'000 lb.	'000 lb.	'000 lb.
1935	-	-	-	-	-	-
1936	5,515	117,329	-	-	5,603	118,302
1937	4,468	129,490	-	-	4,551	130,409
1938	7,365	121,857	-	-	7,443	122,713
1939	5,232	122,900	-	-	5,303	123,685
1940	6,007	142,858	55	1,150	6,130	144,756
1941	7,743	144,987	74	1,549	7,884	147,268
1942	9,712	202,407	57	1,193	9,834	204,323
1943	9,163	159,823	122	1,592	9,349	162,112
1944	9,470	175,753	152	1,671	9,686	178,115
1945	7,238	183,792	160	1,818	7,458	186,293
1946	5,717	141,046	235	3,559	6,011	145,285
1947	3,411	114,058	127	2,546	3,597	117,282
	EXPORTS		IMPORTS		TOTAL SUPPLY STOCKS, DEC. 1	
1935	8,654	53,649	182	1,185	-	25,187
1936	15,140	75,720	271	1,139	38,918	22,771
1937	14,761	86,177	224	1,286	41,337	27,643
1938	12,536	73,415	190	1,239	51,900	32,294
1939	18,822	87,926	295	1,258	46,883	28,271
1940	9,290	102,661	39	947	39,031	27,525
1941	14,175	86,090	68	776	54,717	38,968
1942	12,734	129,074	40	816	77,914	60,122
1943	19,797	120,403	42	376	62,648	47,675
1944	13,891	115,995	36	543	67,131	48,447
1945	10,175	122,260	86	594	62,606	45,687
1946	8,533	100,182	135	1,233	39,184	25,939
1947	10,930	52,136	=	=	-	37,777
	NOVEMBER MAKE, 1935 to 1947, EXPRESSED AS INDEXES OF THE SAME MONTH IN 1939 AND 1946.					
	1939	1946	1939	1946	1939	1946
	%	%	%	%	%	%
1935	-	-	-	-	-	-
1936	105.4	96.5	-	-	105.7	93.2
1937	85.4	78.2	-	-	85.8	75.7
1938	140.8	128.8	-	-	140.4	123.8
1939	100.0	91.5	-	-	100.0	88.2
1940	114.8	105.1	-	23.4	115.6	102.0
1941	148.0	135.4	-	31.5	148.7	131.2
1942	185.6	169.9	-	24.3	185.4	163.6
1943	175.1	160.3	-	51.9	176.3	155.5
1944	181.0	165.6	-	64.7	182.7	161.1
1945	138.3	126.6	-	68.1	140.6	124.1
1946	109.3	100.0	-	100.0	113.4	100.0
1947	65.2	59.7	-	54.0	67.8	59.8

1/ Includes other cheese produced in Quebec, 1936 to 1939.

2/ Farm-made cheese is included in data shown in this column.

- Not available.

= Imports not available (see Trade Report No. 101 for data).

MILK PRODUCTION AND UTILIZATION

Milk Production: The total milk production of Canada during the month of October amounted to approximately 1,469,000,000 pounds. This represented an increase of 94 million pounds over the same month last year. All provinces, with the exception of Prince Edward Island and Nova Scotia, contributed to this advance in milk production, with the greatest gains being recorded in Quebec and Saskatchewan. Comparing the October production with that of September, 1947, there was a reduction of 244 million pounds, whereas a year ago the milk production of October registered a decline of 176 million pounds from that of September, 1946.

Fluid Sales: October sales of milk and cream (the latter expressed as milk), amounted to 336,425,000 pounds. This was practically the same as that recorded in the same month of the previous year. It will be seen, therefore, that the situation was better than in the previous month when a decline of 2.2 per cent was reported in comparison with the corresponding month of 1946. Approximately 84 per cent of this amount was sold in the form of milk (282,016,000 pounds), and 16 per cent as cream (54,409,000 pounds). A month ago, milk sales showed a reduction of $4\frac{1}{2}$ per cent from the previous year, while in the month of October the difference between last year and this year was only $2\frac{1}{2}$ per cent. The decline in fluid milk sales was common to all provinces except Prince Edward Island, Nova Scotia and British Columbia. Cream sales (expressed as milk), increased 16 per cent in comparison with October, 1946. This advance may be compared with the situation a month ago when the September sales were 11 per cent above those of a year ago. The increase in cream sales was common to all provinces except Prince Edward Island and British Columbia.

Sales Income: Farm income from dairying reached a total of \$34,632,000 in the month of September in comparison with \$26,205,000 in the same month a year ago. Higher prices per unit were largely responsible for this advance, the weighted average being \$2.44 per hundred as compared with \$2.10 per hundred in September, 1946. The high price of fluid milk was a considerable factor in this upward movement, the average being \$3.32 per hundred as compared with \$3.89 per hundred twelve months ago. Fluid cream likewise benefited from the upward trend in prices and this also applied to milk for concentration, cheese milk and milk used in the production of ice cream. With a substantial increase in the demand for ice cream, manufacturers paid an average of \$2.48 per hundred as compared with \$1.96 per hundred a year ago. While the butter market has fluctuated to some extent, the general trend in prices has been moving in an upward direction throughout the season. In September, butter-fat prices averaged 61.5 cents as against 50.4 cents in the same month a year ago. Dairy butter prices also reacted to this price movement, the September price averaging 58.1 cents per pound in comparison with 39.7 cents in September, 1946.

Production Conditions on Farms: High temperatures and comparatively light precipitation was reported from most sections of the Dominion during the month of November. Winter set in during the last week of November although many sections of Western Canada received light falls of snow early in the month. Feed costs are much higher than last year. The cost of hay is up about \$6.00 per ton and mill feeds are about \$14.00 per ton higher than those of a year ago. Observers indicate that the cost of feed on the whole is about one-third higher than last year, producing a

Table 3 - CONCENTRATED MILK PRODUCTS AND ICE CREAM

Production and Domestic Disappearance in Canada
November, and January - November, 1935 to 1947.

Year	Whole Milk Products		Milk By-Products		Ice Cream	
	November	Jan.-Nov.	November	Jan.-Nov.	November	Jan.-Nov.
PRODUCTION						
	'000 lb.	'000 lb.	'000 lb.	'000 lb.	'000 gal.	'000 gal.
1935	4,418	74,728	1,477	25,735	-	-
1936	4,682	77,314	1,880	26,099	-	-
1937	7,374	102,516	1,363	27,348	-	-
1938	6,462	116,297	1,935	34,306	-	-
1939	10,118	123,435	2,030	32,900	360	8,692
1940	9,907	147,740	1,866	34,331	439	10,594
1941	12,292	190,030	1,720	34,907	566	13,601
1942	13,163	209,143	2,033	38,428	608	14,616
1943	11,288	211,474	1,487	37,112	792	16,561
1944	13,339	220,058	2,619	43,612	846	17,036
1945	11,897	234,012	2,602	51,206	762	15,788
1946	11,656	230,987	3,255	56,766	666	15,255
1947	13,482	248,679	3,586	72,145	1,179	22,687
DOMESTIC DISAPPEARANCE IN POUNDS PER CAPITA						
					gal.	gal.
1935	.40	4.64	.16	2.14	-	-
1936	.44	5.44	.17	2.34	-	-
1937	.56	6.73	.21	2.42	-	-
1938	.45	6.98	.22	2.37	-	-
1939	.44	8.99	.23	3.16	.03	.77
1940	1.01	8.80	.23	3.10	.04	.93
1941	.98	10.42	.20	3.24	.05	1.18
1942	1.18	12.86	.22	3.22	.05	1.26
1943	1.07	14.36	.23	3.17	.06	1.40
1944	1.04	12.12	.30	3.47	.07	1.43
1945	1.19	13.81	.36	3.66	.06	1.30
1946	.85	13.15	.31	4.10	.05	1.24
1947	1.21	15.69	.28	4.38	.09	1.83
NOVEMBER MAKE, 1935 to 1947, EXPRESSED AS INDEXES OF THE SAME MONTH IN 1939 and 1946 1/						
	1939	1946	1939	1946	1939	1946
	%	%	%	%	%	%
1935	43.7	37.9	72.8	45.4	-	-
1936	46.3	40.2	92.6	57.8	-	-
1937	72.9	63.3	67.1	41.9	-	-
1938	63.9	55.4	95.3	59.4	-	-
1939	100.0	86.8	100.0	62.4	100.0	54.1
1940	97.9	85.0	91.9	57.3	121.9	65.9
1941	121.5	105.5	84.7	52.8	157.2	85.0
1942	130.1	112.9	100.1	62.5	168.9	91.3
1943	111.6	96.8	73.3	45.7	220.0	118.9
1944	131.8	114.4	129.0	80.5	235.0	127.0
1945	117.6	102.1	128.2	79.9	211.7	114.4
1946	115.2	100.0	160.3	100.0	185.0	100.0
1947	133.2	115.7	176.7	110.2	327.5	177.0

1/ Note that base index in each column is shown as 100.

corresponding increase in the cost of maintaining dairy cattle. The general consensus of opinion points to a considerable reduction in the milk supply during the winter months.

Reports from Dairy Correspondents indicate that the numbers of milch cows on farms in October were almost the same as a year ago. This situation may be compared with that of September when a reduction from the previous year of almost one-half of one per cent was recorded. There was also an improvement in respect to the percentage of cows being milked. Making comparisons with the corresponding month of 1946, the percentage of cows being milked moved from a fractional decrease in September to an increase of one-half of one per cent in October. There was practically no change in the numbers of cows being freshened, and the daily milk production per cow of 16.8 pounds shown in October was practically on a par with that reported in October, 1946.

--- 000 0 000 ---

Table 4 - CONCENTRATED WHOLE MILK PRODUCTS
Production in Canada, Exports and Imports of Principal Products
November, and January-November, 1935 to 1947.

Year	Evaporated Whole Milk		Condensed Whole Milk		Whole Milk Powder	
	November	Jan.-Nov.	November	Jan.-Nov.	November	Jan.-Nov.
PRODUCTION						
	'000 lb.	'000 lb.	'000 lb.	'000 lb.	'000 lb.	'000 lb.
1935	3,457	63,298	793	8,634	109	2,135
1936	3,838	66,611	637	7,426	149	2,637
1937	5,937	86,125	972	10,554	401	5,045
1938	5,349	100,423	678	8,736	365	6,167
1939	9,082	108,610	489	7,115	444	6,194
1940	8,044	127,290	1,429	13,220	354	6,164
1941	9,294	158,429	2,401	22,971	475	7,839
1942	10,737	176,214	1,747	21,481	573	10,616
1943	8,996	171,338	1,343	25,315	873	14,090
1944	10,529	175,094	1,803	28,811	821	15,117
1945	8,881	191,141	2,196	27,130	658	14,125
1946	8,084	184,425	2,095	29,370	1,296	14,848
1947	9,677	203,969	2,471	26,675	1,053	15,367
EXPORTS						
1935	1,660	17,002	243	2,111	443	3,161
1936	889	12,960	177	1,284	250	3,651
1937	4,065	22,602	234	3,743	349	2,920
1938	2,818	26,241	310	2,562	287	3,889
1939	3,708	23,315	107	1,055	581	5,847
1940	5,019	29,775	692	6,034	220	4,063
1941	5,354	40,233	2,773	15,976	364	4,811
1942	3,388	46,480	1,826	12,307	173	2,416
1943	1,560	26,051	1,657	16,610	50	1,298
1944	2,278	26,458	1,725	16,568	94	974
1945	5,684	59,086	1,691	17,238	764	4,453
1946	2,932	46,367	1,902	17,569	563	4,684
1947	3,132	39,913	2,212	16,263	905	4,941
TOTAL SUPPLY STOCKS DEC. 1			TOTAL SUPPLY STOCKS DEC. 1		IMPORTS	
1935	15,381	9,598	1,244	494	2	36
1936	14,226	9,196	1,224	524	20	186
1937	19,472	10,245	1,498	555	45	865
1938	22,925	15,375	1,424	1,130	(1)	702
1939	16,599	8,797	1,355	537	3	198
1940	34,534	19,228	2,487	1,156	(1)	16
1941	44,307	27,174	3,833	1,983	1	334
1942	34,331	19,081	5,233	2,623	14	54
1943	26,683	14,584	3,908	1,685	1	159
1944	53,609	40,534	6,771	4,417	1	169
1945	46,716	28,222	4,721	3,038	3	23
1946	33,887	22,460	6,035	3,405	-	35
1947	30,606	6,460 (3)	6,138	3,012	(2)	(2)

Note - Supply data which appear in the first and third columns includes stocks at the beginning of the months, plus production and imports during the month. (1) Less than 500 lbs. (2) Not available on date of publication. (3) Stocks in the hands of wholesalers not included in data for December 1, 1947.

Table 5. - CONCENTRATED MILK BY-PRODUCTS
 Production in Canada, Exports and Imports of Principal Products
 November, and January - November, 1935 to 1947.

Year	Skim milk Powder		Condensed Skim milk		Casein	
	November	Jan.-Nov.	November	Jan.-Nov.	November	Jan.-Nov.
PRODUCTION						
	'000 lb.	'000 lb.	'000 lb.	'000 lb.	'000 lb.	'000 lb.
1935	945	17,832	355	3,981	26	1,133
1936	1,221	17,309	333	4,238	119	1,280
1937	934	17,396	212	4,681	36	1,526
1938	1,443	24,145	149	4,216	62	1,413
1939	1,417	23,895	298	2,963	57	1,629
1940	1,148	24,983	422	3,916	44	1,295
1941	1,072	25,049	322	4,184	53	1,114
1942	1,237	25,392	276	5,072	134	3,096
1943	641	21,551	133	3,862	99	3,053
1944	1,659	28,305	164	3,320	163	2,822
1945	1,592	35,642	186	3,362	135	3,612
1946	1,999	40,188	281	3,340	270	3,977
1947	2,120	50,623	191	4,110	487	6,005
EXPORTS						
1935	148	1,054	-	-	26	93
1936	83	1,217	-	-	38	139
1937	117	974	-	-	33	401
1938	85	992	-	-	39	225
1939	62	2,276	-	-	85	744
1940	159	916	-	-	197	2,014
1941	54	636	-	-	134	1,128
1942	36	385	-	-	14	1,850
1943	1	373	-	-	3	275
1944	-	22	-	-	1	477
1945	1,101	6,507	-	-	4	207
1946	693	4,371	-	-	23	134
1947	2,779	12,229	-	-	(2)	(2)
IMPORTS (1)						
1935	148	1,054	-	-	26	93
1936	83	1,217	-	-	38	139
1937	117	974	-	-	33	401
1938	85	992	-	-	39	225
1939	62	2,276	-	-	85	744
1940	159	916	-	-	197	2,014
1941	54	636	-	-	134	1,128
1942	36	385	-	-	14	1,850
1943	1	373	-	-	3	275
1944	-	22	-	-	1	477
1945	1,101	6,507	-	-	4	207
1946	693	4,371	-	-	23	134
1947	2,779	12,229	-	-	(2)	(2)
DOMESTIC DISAPPEARANCE IN POUNDS PER CAPITA						
1935	.10	1.42	.03	.36	.01	.11
1936	.11	1.49	.03	.41	.01	.14
1937	.15	1.49	.03	.42	.01	.17
1938	.14	1.58	.03	.36	.01	.12
1939	.16	2.18	.03	.29	.02	.22
1940	.15	2.10	.04	.35	.02	.29
1941	.14	2.25	.02	.36	.01	.21
1942	.15	2.03	.02	.43	.02	.35
1943	.11	1.84	.02	.32	.03	.27
1944	.19	2.19	.02	.27	.04	.26
1945	.19	2.44	.02	.29	.06	.24
1946	.19	2.81	.03	.28	.03	.25
1947	.17	2.79	.03	.34	.01	.32

(1) Condensed skim milk is not separately listed in import returns. Condensed milk designated as such shown in trade reports consists principally of condensed whole milk products.

(2) Not available at date of publication.

(3) Less than 500 lbs.

Table 6. - PRODUCTION OF MILK PER COW AND PERCENTAGES OF COWS MILKING

Based on Reports of Dairy Correspondents, for October 1943 to 1947.

Province	Milk Production Per Cow in pounds per day						Percentage of Cows Milking					
	1943	1944	1945	1946	1947	Av.	1943	1944	1945	1946	1947	Av.
CANADA	15.7	15.7	15.8	16.7	16.8	16.1	81.0	79.5	78.7	80.1	80.5	80.0
Prince Edward Island .	15.8	17.4	15.9	16.2	16.5	16.4	88.1	88.3	84.5	88.8	87.7	87.5
Nova Scotia	15.9	16.4	16.5	18.2	17.0	16.8	86.7	84.2	81.7	83.8	81.6	83.6
New Brunswick	17.5	15.5	16.0	19.3	17.4	17.1	85.6	75.5	82.6	92.9	87.1	84.7
Quebec	16.8	17.9	17.7	17.1	16.7	17.2	90.0	90.0	86.4	86.8	89.0	88.4
Ontario	16.5	17.3	17.4	17.7	18.8	17.5	83.3	83.9	84.0	82.2	82.9	83.3
Manitoba	13.5	12.2	12.7	14.6	14.3	13.5	72.0	65.9	68.9	73.5	74.3	70.9
Saskatchewan	12.3	12.4	11.4	14.4	13.8	12.9	68.2	65.6	63.2	70.8	72.5	68.1
Alberta	15.6	13.0	14.2	15.4	15.5	14.7	71.7	68.5	70.0	73.8	74.6	71.7
British Columbia	16.7	14.8	15.9	17.0	17.0	16.3	78.8	78.4	77.5	77.8	76.6	77.8

Table 7. - PRODUCTION OF DAIRY BUTTER AND WHEY BUTTER IN CANADA

By Provinces, October 1945, 1946 and 1947.

Province	DAIRY BUTTER			WHEY BUTTER		
	1945	1946	1947	1945	1946	1947
	'000 lb.	'000 lb.	'000 lb.	lb.	lb.	lb.
CANADA	4,160	4,279	4,426	293,859	223,878	179,372
Prince Edward Island .	37	39	38	-	-	-
Nova Scotia	193	200	198	-	-	-
New Brunswick	299	308	302	-	-	-
Quebec	604	592	568	40,094	20,294	6,010
Ontario	477	501	561	247,792	201,480	167,389
Manitoba	444	471	457	2,805	998	3,182
Saskatchewan	996	1,006	1,086	-	-	-
Alberta	969	1,027	1,068	2,016	-	2,049
British Columbia	141	135	148	1,152	1,106	742

Table 8. - UTILIZATION OF MILK IN PERCENTAGES OF TOTAL MILK PRODUCTION
in Canada, by Provinces, October, 1946 and 1947.

Province	Sold for Distribution and Used in Manufacture				Used on Farms		
	Creamery Butter %	Fluid Sales %	Factory Cheese %	Conc. Milk & Ice Cream %	Dairy Butter %	Other Purposes %	
CANADA	1946	37.6	24.5	10.9	4.8	7.2	15.0
	1947	43.3	22.9	7.4	5.8	7.0	13.6
Prince Edward Island	1946	55.3	11.6	5.1	0.5	6.5	20.9
	1947	54.2	11.5	6.5	0.8	6.4	20.6
Nova Scotia	1946	37.2	30.5	-	5.6	13.2	13.5
	1947	35.7	31.7	-	5.7	13.4	13.5
New Brunswick ..	1946	35.6	19.6	2.7	1.3	21.4	19.4
	1947	39.2	19.4	0.9	2.0	20.3	18.2
Quebec	1946	47.6	25.5	9.8	4.1	3.3	9.7
	1947	57.9	22.8	3.5	4.4	2.9	8.5
Ontario	1946	27.6	27.4	22.1	8.0	2.6	12.3
	1947	32.2	26.1	17.5	10.0	2.7	11.4
Manitoba	1946	46.6	17.4	2.8	1.0	11.8	20.4
	1947	49.7	16.7	2.4	1.4	10.9	18.9
Saskatchewan ...	1946	43.3	11.4	0.3	0.6	17.0	27.4
	1947	47.6	10.7	0.2	0.9	17.0	23.6
Alberta.....	1946	35.8	18.1	1.5	1.9	17.8	24.9
	1947	39.2	16.5	1.5	2.6	17.4	22.8
British Columbia	1946	14.0	58.9	1.0	10.6	6.4	9.1
	1947	13.3	58.0	0.5	13.0	6.8	8.3

Note: The figures given in this table represent relationship to total with milk production taken as 100.

Table 9. - MILK PRODUCTION AND UTILIZATION IN CANADA, BY PROVINCES,

October, 1945, 1946 and 1947.

(Section - A)

	Total Milk Production	1	2	3	4	5	6	
		Factory Production				Farm Production		
		Creamery Butter	Factory Cheese	Conc. Milk	Ice Cream	Dairy Butter	Farm Cheese	
	'000 lb.	'000 lb.	'000 lb.	'000 lb.	'000 lb.	'000 lb.	'000 lb.	
CANADA	1945	1,466,222	560,703	201,408	44,815	14,204	97,469	682
	1946	1,374,467	516,468	149,403	50,291	15,220	100,257	662
	1947	1,468,564	636,570	108,848	60,863	23,964	103,701	662
P.E.I.	1945	15,037	8,599	1,137	-	86	867	1
	1946	13,987	7,732	713	-	86	914	1
	1947	13,973	7,568	913	-	114	890	1
N.S.	1945	36,555	13,800	-	735	1,015	4,522	27
	1946	35,592	13,238	-	1,021	972	4,686	27
	1947	34,613	12,371	-	429	1,543	4,639	27
N.B.	1945	35,577	13,472	1,036	-	471	7,005	4
	1946	33,740	11,996	925	-	443	7,216	4
	1947	34,780	13,636	301	-	686	7,076	4
Que.	1945	461,159	212,814	71,118	10,898	2,701	14,152	28
	1946	413,674	196,953	40,382	14,062	2,729	13,870	28
	1947	453,338	262,533	15,990	16,282	3,873	13,308	28
Ont.	1945	488,909	135,496	121,192	26,281	6,030	11,176	145
	1946	460,306	127,272	101,909	29,539	7,174	11,738	145
	1947	489,817	157,707	86,486	37,999	10,846	13,144	145
Man.	1945	92,743	43,510	3,438	-	872	10,403	110
	1946	93,931	43,814	2,606	-	943	11,036	101
	1947	98,076	48,735	2,384	-	1,400	10,708	101
Sask.	1945	140,464	63,378	156	-	686	23,336	134
	1946	138,894	60,192	356	-	829	23,571	122
	1947	149,490	71,110	279	-	1,315	25,445	122
Alta.	1945	145,184	60,754	2,774	1,676	857	22,704	200
	1946	135,120	48,406	2,000	1,705	772	24,063	200
	1947	143,529	56,209	2,161	2,015	1,686	25,023	200
B.C.	1945	50,594	8,880	557	5,225	1,486	3,304	33
	1946	49,223	6,865	512	3,964	1,272	3,163	34
	1947	50,948	6,701	334	4,138	2,501	3,468	34

Table 9. - MILK PRODUCTION AND UTILIZATION IN CANADA, BY PROVINCES,
October, 1945, 1946 and 1947.

(Section - B)

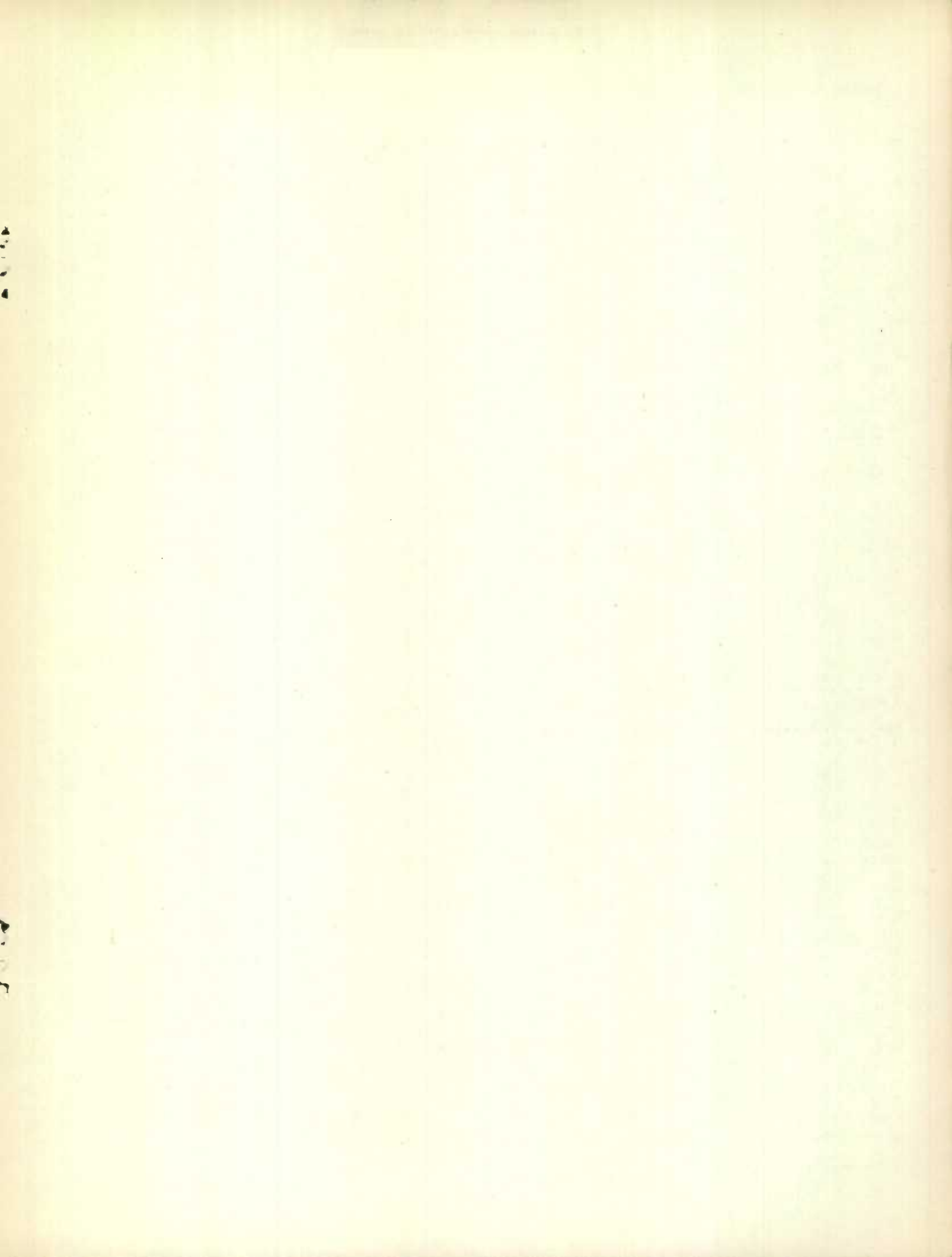
		7	8	9	10	1 - 4	5 & 6	7 - 10
		Milk Otherwise Used				Recapitulation		
		Fluid Milk	Fluid 1/ Cream	Farm-home Consumed	Fed to Livestock	Factory Production	Farm Production	Otherwise Used
	'000 lb.	'000 lb.	'000 lb.	'000 lb.	'000 lb.	'000 lb.	'000 lb.	
CANADA	1945	296,822	49,328	149,925	50,866	821,130	98,151	546,941
	1946	289,574	46,955	152,516	53,121	731,382	100,919	542,166
	1947	282,016	54,409	145,362	52,169	830,245	104,363	533,956
P.E.I.	1945	1,267	243	2,309	528	9,822	868	4,347
	1946	1,345	278	2,406	512	8,531	915	4,541
	1947	1,450	157	2,358	522	8,595	891	4,487
N.S.	1945	10,449	1,281	3,974	752	15,550	4,549	16,456
	1946	9,865	985	4,054	744	15,231	4,713	15,648
	1947	9,972	986	3,932	714	14,343	4,666	15,604
N.B.	1945	6,498	610	5,637	844	14,979	7,009	13,589
	1946	6,230	380	5,694	852	13,364	7,220	13,156
	1947	5,933	809	5,466	869	14,623	7,080	13,077
Que.	1945	94,760	15,221	34,315	5,152	297,531	14,180	149,448
	1946	90,135	15,447	34,658	5,410	254,126	13,898	145,650
	1947	87,122	16,348	32,579	5,275	298,678	13,336	141,324
Ont.	1945	120,622	13,566	42,437	11,964	288,999	11,321	188,589
	1946	115,478	10,659	43,710	12,682	265,894	11,883	182,529
	1947	111,385	16,644	42,399	13,062	293,038	13,289	183,490
Man.	1945	12,230	3,670	13,089	5,421	47,820	10,513	34,410
	1946	12,568	3,609	13,416	5,638	47,363	11,137	35,431
	1947	12,405	3,939	12,879	5,525	52,519	10,809	34,748
Sask.	1945	11,752	3,377	26,490	11,155	64,220	23,470	52,774
	1946	12,931	2,955	26,225	11,713	61,377	23,693	53,824
	1947	12,405	3,560	24,127	11,127	72,704	25,567	51,219
Alta.	1945	18,794	4,969	18,743	13,713	66,061	22,904	56,219
	1946	19,145	5,331	19,305	14,193	52,883	24,263	57,974
	1947	18,281	5,461	18,726	13,767	62,071	25,223	56,235
B.C.	1945	20,450	6,391	2,931	1,337	16,148	3,337	31,109
	1946	21,877	7,111	3,048	1,377	12,613	3,197	33,413
	1947	23,063	6,505	2,896	1,308	13,674	3,502	33,772

1/ Cream expressed as milk.

Table 10 - FARM INCOME FROM DAIRYING AND PRICE AVERAGES PER HUNDRED POUNDS OF MILK
By Provinces and by Products, September 1946 and 1947.

	Income		Price		Income		Price	
	1946	1947	1946	1947	1946	1947	1946	1947
	TOTAL INCOME				(1) FLUID SALES (MILK ONLY)			
	\$ '000	\$ '000	\$	\$	\$ '000	\$ '000	\$	\$
CANADA	26,205	34,632	2.10	2.44	8,599	9,445	2.89	3.32
P.E.I.	233	303	1.92	2.27	37	45	2.51	3.03
N. S.	648	789	2.35	2.54	315	292	3.31	3.22
N. B.	571	727	2.14	2.51	204	213	3.09	3.49
Que.	9,266	12,142	2.07	2.46	2,715	3,149	2.84	3.37
Ont.	9,869	12,389	2.19	2.49	3,480	3,829	2.85	3.36
Man.	1,541	2,093	1.85	2.21	376	364	2.90	2.96
Sask.	1,688	2,382	1.81	2.25	304	342	2.73	3.14
Alta.	1,337	2,502	2.00	2.26	538	563	2.74	3.08
B. C.	1,052	1,305	2.54	3.07	630	648	3.43	3.47
	(2) FLUID CREAM				(3) MILK FOR CONCENTRATION			
CANADA	878	1,217	1.76	2.19	1,210	1,767	2.13	2.68
P.E.I.	4	4	1.70	2.23	-	-	-	-
N. S.	14	19	1.57	2.03	20	12	2.17	2.66
N. B.	9	19	1.60	2.24	-	-	-	-
Que.	288	383	1.72	2.15	350	538	2.23	2.69
Ont.	226	381	1.73	2.22	703	957	2.12	2.48
Man.	75	95	1.89	2.42	-	-	-	-
Sask.	56	65	1.64	1.96	-	-	-	-
Alta.	79	115	1.74	2.03	42	64	2.09	2.49
B. C.	127	136	1.94	2.42	95	196	1.85	4.57
	(4) CHEESE MILK				(5) ICE CREAM			
CANADA	4,031	3,798	2.06	2.27	357	901	1.96	2.48
P.E.I.	20	26	1.85	2.26	1	5	2.15	2.28
N. S.	-	-	-	-	27	72	1.91	2.59
N. B.	25	16	2.08	2.36	12	26	1.87	2.59
Que.	1,165	737	1.96	2.10	84	206	2.11	2.60
Ont.	2,670	2,834	2.10	2.31	146	380	1.95	2.39
Man.	83	87	2.00	2.38	17	32	1.86	2.25
Sask.	13	14	1.95	2.35	13	32	1.75	2.36
Alta.	44	71	2.05	2.36	18	56	1.83	2.51
B. C.	11	13	2.00	2.92	39	92	2.01	2.62
	(6) CREAMERY BUTTER-FAT				(7) DAIRY BUTTER			
CANADA	10,696	16,705	50.4	61.5	434	799	39.7	58.1
P.E.I.	168	220	52.8	61.9	3	3	37.0	56.0
N. S.	248	323	52.7	62.0	24	71	42.0	57.0
N. B.	282	381	52.2	62.5	39	72	41.0	58.0
Que.	4,463	6,758	52.0	63.3	201	371	40.0	59.0
Ont.	2,623	3,898	51.2	60.4	21	110	42.0	60.0
Man.	967	1,451	46.1	58.8	23	64	36.5	55.0
Sask.	1,228	1,885	48.1	61.2	74	44	38.0	54.0
Alta.	581	1,593	46.8	59.0	35	40	39.0	56.0
B.C.	136	196	48.3	62.1	14	24	38.0	60.0

Government subsidies and bonuses are represented in income and price data.



STATISTICS CANADA LIBRARY
BIBLIOTHÈQUE STATISTIQUE CANADA



1010779651