

23-001 c.2

STATISTICS STATISTIQUE
CANADA CANADA

Published by Authority of the Rt. Hon. C. D. Howe, M.P., Minister of Trade and Commerce

DOMINION BUREAU OF STATISTICS

APR 14 1947

LIBRARY
BIBLIOTHÈQUE

MONTHLY DAIRY REVIEW OF CANADA 1947



Dominion Statistician:
Director, Agricultural Division:
In Charge of Dairy Statistics:

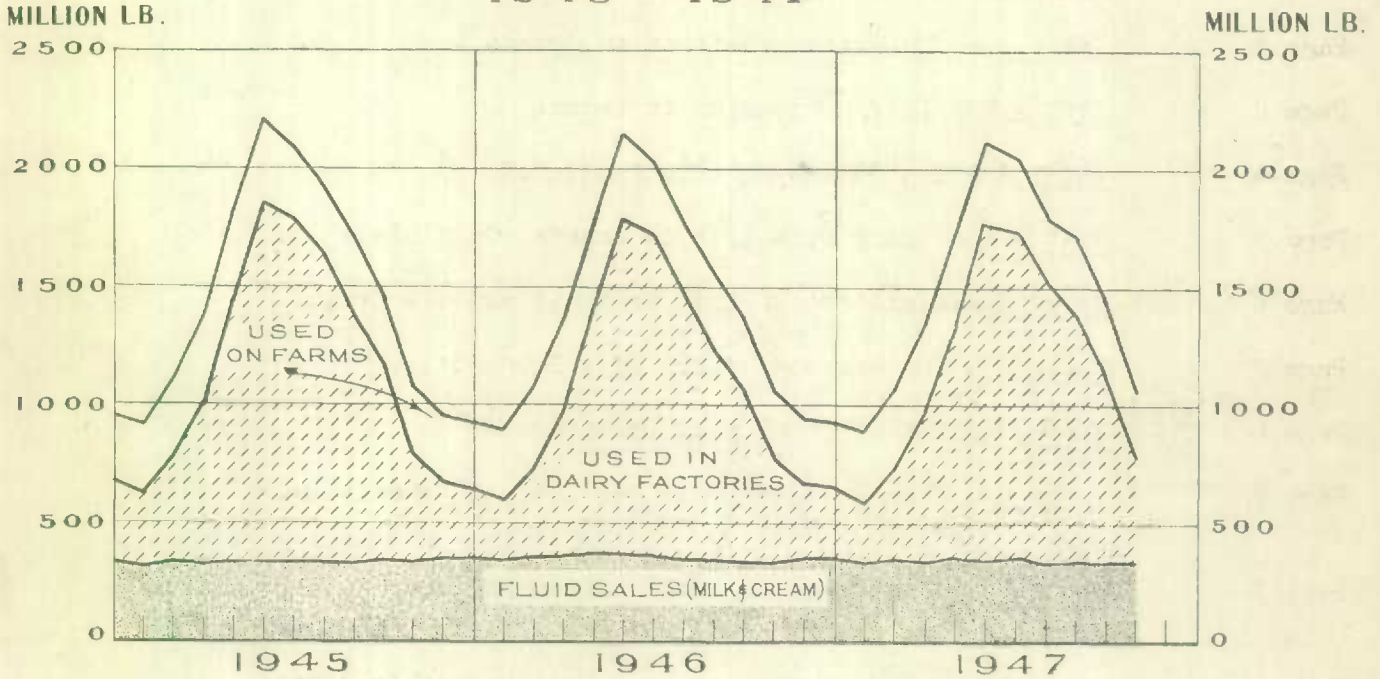
Herbert Marshall
C. V. Parker
P. H. Ferguson

Volume No. VIII, Report No. 12

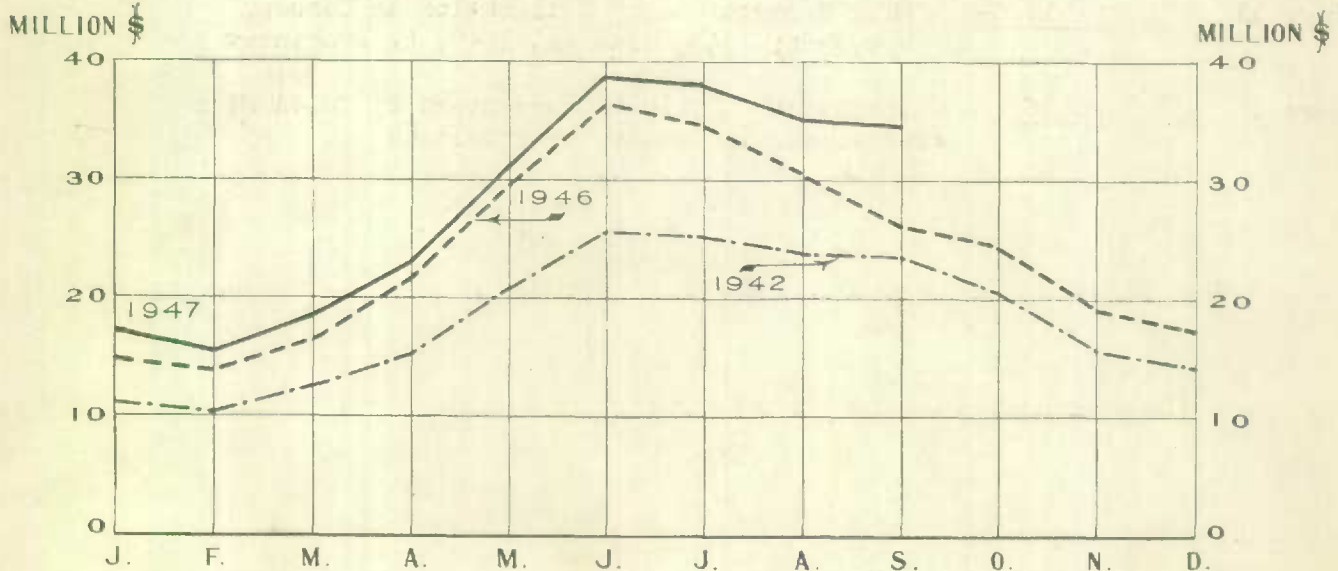
(December)

Published January 26, 1948

MILK PRODUCTION AND UTILIZATION 1945 - 1947



SALES INCOME FROM DAIRYING





CONTENTS

Page 1	<u>Summary</u> - The Dairy Position in Brief
Page 2	<u>Table 1</u> - The Butter Position in Canada
Page 3	<u>Text</u> - The Dairy Situation in Canada
Page 4	<u>Table 2</u> - The Cheese Position in Canada
Page 5	<u>Text</u> - The Dairy Situation in Canada (Concluded)
Page 6	<u>Table 3</u> - Concentrated Milk Products and Ice Cream
Page 7	<u>Table 4</u> - Concentrated Whole Milk Products
Page 8	<u>Table 5</u> - Concentrated Milk By-Products
Page 9	<u>Table 6</u> - Production of Milk Per Cow and Percentages of Cows Milking
Page 9	<u>Table 7</u> - Production of Dairy Butter and Whey Butter in Canada
Page 10	<u>Table 8-A</u> - Milk Production and Utilization in Canada, November, 1945, 1946 and 1947, by Provinces
Page 11	<u>Table 8-B</u> - Milk Production and Utilization in Canada, November, 1945, 1946 and 1947, by Provinces
Page 12	<u>Table 9</u> - Utilization of Milk in Percentage of Total Milk Production, in Canada, by Provinces

THE DAIRY POSITION IN BRIEF

The production of creamery butter in the month of December exceeded that of the same month of the preceding year by less than 1 per cent.

The quantity of creamery butter produced during the twelve-month period ending December, 1947, was 7 per cent greater than that of 1946.

While the total butter supply in the month of December was 4 per cent greater than that of the same month of 1946, the domestic disappearance was nearly 14 per cent greater.

Wholesale butter prices at Montreal quoted by the Canadian Commodity Exchange averaged 66 1/8 cents per pound in December as against 40 cents in the same month of 1946. Cheese prices averaged 26 cents as against 23 cents in the same month of the previous year.

The total farm milk production of Canada in the month of November was one-half of one per cent above that of November, 1946. The provinces that contributed to this increase were Quebec, Alberta and British Columbia.

Fluid sales in the month of November were almost equal to those of the same month last year. Fluid milk declined 3 per cent while fluid cream on a milk basis increased 16 1/2 per cent. Sales of milk by provinces indicated the same situation with the exception of British Columbia where the sales of milk were greater than those of a year ago. Cream sales declined in Prince Edward Island, Nova Scotia, Saskatchewan and British Columbia as opposed to increases in the other five provinces and in the Dominion.

Milk used in dairy factory production during November increased approximately 2 1/2 per cent over the same month last year.

The total numbers of milch cows on farms showed a reduction of approximately 1 1/2 per cent, a much greater decline than that recorded in the previous month.

Heavy snowfalls, normal temperatures but longer hours of sunshine were indicated in the reports from weather stations during December. Conditions, however, were exceptionally variable, particularly in regard to precipitation and sunshine. Farmers are feeding less grain and concentrates as the result of short supplies and the higher prices now prevailing. This situation is likely to be reflected in lower milk production during the winter months.

Table 1. - THE BUTTER POSITION IN CANADA

December, and January - December, 1935 to 1947.

Year	Creamery Butter		Dairy Butter 1/		Total Butter 2/	
	December	Jan.-Dec.	December	Jan.-Dec.	December	Jan.-Dec.
	PRODUCTION					
	'000 lb.	'000 lb.	'000 lb.	'000 lb.	'000 lb.	'000 lb.
1935	10,399	240,919	5,622	97,447	16,047	339,680
1936	10,789	250,932	5,503	95,405	16,322	347,827
1937	9,847	247,057	5,408	93,724	15,293	342,591
1938	11,259	267,347	5,258	91,010	16,555	360,168
1939	11,906	267,613	5,044	87,459	16,987	356,878
1940	12,330	264,724	4,851	84,256	17,223	350,986
1941	12,095	285,848	4,764	82,796	16,903	370,795
1942	14,687	284,591	4,522	78,525	19,265	365,798
1943	12,365	311,709	3,176	55,407	15,594	369,316
1944	12,385	298,777	3,423	54,580	15,875	356,013
1945	10,591	293,811	3,327	53,283	13,960	349,899
1946	10,253	271,366	3,419	54,225	13,724	327,869
1947	10,332	290,152	3,586	56,295	13,954	348,350
	DOMESTIC DISAPPEARANCE IN POUNDS PER CAPITA					
1935	1.75	21.51	.53	9.01	2.28	30.64
1936	1.73	22.09	.50	8.71	2.23	30.94
1937	1.79	22.73	.49	8.50	2.28	31.39
1938	1.79	22.64	.47	8.13	2.26	30.93
1939	1.78	22.92	.45	7.79	2.23	30.87
1940	1.82	23.83	.43	7.39	2.26	31.40
1941	1.92	23.85	.41	7.20	2.34	31.24
1942	2.05	26.15	.39	6.74	2.45	33.12
1943	2.12	23.62	.28	4.69	2.41	28.50
1944	1.97	25.00	.29	4.56	2.27	29.79
1945	2.08	24.17	.27	4.40	2.36	28.80
1946	1.82	21.04	.28	4.41	2.11	25.64
1947	2.05	23.57	.28	4.54	2.34	28.28
	DECEMBER MAKE, 1935 to 1947, EXPRESSED AS INDEXES OF THE SAME MONTH IN 1939 AND 1946 3/					
	1939	1946	1939	1946	1939	1946
	%	%	%	%	%	%
1935	87.3	101.4	111.5	164.4	94.5	116.9
1936	90.6	105.2	109.1	161.0	96.1	118.9
1937	82.7	96.0	107.2	158.2	90.0	111.4
1938	94.6	109.8	104.2	153.8	97.5	120.6
1939	100.0	116.1	100.0	147.5	100.0	123.8
1940	103.6	120.3	96.2	141.9	101.4	125.5
1941	101.6	118.0	94.4	139.3	99.5	123.2
1942	123.4	143.2	89.7	132.3	113.4	140.4
1943	103.9	120.6	63.0	92.9	91.8	113.6
1944	104.0	120.8	67.9	100.1	93.5	115.7
1945	89.0	103.3	66.0	97.3	82.2	101.7
1946	86.1	100.0	67.8	100.0	80.8	100.0
1947	86.8	100.8	71.1	104.9	82.1	101.7

1/ Data for December, 1947 are preliminary; revisions for November appear on Table 7.

2/ Includes Whey Butter amounting to 51,500 pounds in December, 1946 and 35,897 pounds in December, 1947.

3/ Note the base index in each column is shown as 100.

THE BUTTER SITUATION

Production: Creamery butter production in December reached a total of 10 million pounds, exceeding that of the same month of the previous year by only 79 thousand pounds. The dairy butter make moved up to approximately $3\frac{1}{2}$ million pounds, while whey butter fell to less than 36 thousand pounds. Comparisons made with December, 1946, indicate slight increases in the creamery and dairy make, while whey butter production reveals a substantial decline.

Total Supply: The supply of total butter (creamery, dairy and whey), which is represented by stocks at beginning plus December production, amounted to approximately $73\frac{1}{2}$ million pounds. This was a gain of approximately $2\frac{3}{4}$ million pounds in comparison with the total supply reported in December, 1946. This improvement may be credited to the high production during the autumn, a situation which was reflected in the stocks of December 1. However, at January 1, 1948, this situation was reversed; the 44 million pounds in store and transit at that date represented a decline of about $\frac{1}{2}$ million pounds as compared with those of January 1, 1947.

Domestic Disappearance: The domestic disappearance of total butter in December was $29\frac{1}{2}$ million pounds as compared with less than 26 million pounds a year ago and $30\frac{1}{2}$ million pounds in the previous month. In pounds per capita, the December disappearance was 2.34 pounds in comparison with 2.43 pounds last month and 2.11 pounds in the same month last year.

SUPPLIES OF OTHER FACTORY PRODUCTS

Cheddar Cheese Production: The December make of cheddar cheese fell to approximately $1\frac{1}{4}$ million pounds, approximately one half the amount made in the same month of 1946. The quantity manufactured during the year was $115\frac{1}{4}$ million pounds, representing a reduction of over 28 million pounds as compared with that produced in 1946. It may be noted from Table 2 that the December make was the lowest output for this month during the ten-year period. Likewise, the total for the year 1947 was the smallest quantity produced since 1937.

Concentrated Milk Products: The total quantity of concentrated milk products manufactured in December was $14\frac{1}{2}$ million pounds, making a total of over 335 million pounds for the year 1947. Compared with the previous year the 1947 production represented a gain of over 33 million pounds. The output of concentrated whole milk products exceeded that of the preceding December by $\frac{1}{2}$ million pounds, while milk by-products registered a reduction of $\frac{1}{4}$ million pounds. The domestic disappearance of concentrated whole milk products per capita (see Table 3), was .94 pounds in December as against .83 pounds in the same month last year; and for the year 1947 it was 16.79 pounds in comparison with 13.98 pounds in 1946. The domestic disappearance of milk by-products was .15 and .17 pounds for December, 1946 and December, 1947, respectively. For the year 1947 the disappearance was 4.56 pounds in comparison with 4.25 pounds in 1946.

Ice Cream: The quantity of ice cream manufactured in December amounted to slightly more than 1 million gallons, approximately double the quantity produced in the same month a year ago. The $23\frac{3}{4}$ million gallons of ice cream manufactured during the year 1947, exceeded the 1946 make by 8 million gallons.

Table 2 - THE CHEESE POSITION IN CANADA

December, and January - December, 1935 to 1947.

Year	Cheddar Cheese 1/		Other Cheese		Total Cheese 2/	
	December	Jan.-Dec.	December	Jan.-Dec.	December	Jan.-Dec.
PRODUCTION						
	'000 lb.	'000 lb.	'000 lb.	'000 lb.	'000 lb.	'000 lb.
1935	-	-	-	-	-	-
1936	1,794	119,123	-	-	1,883	120,185
1937	1,136	130,626	-	-	1,219	131,628
1938	2,114	123,971	-	-	2,192	124,905
1939	2,575	125,475	-	-	2,647	126,332
1940	1,827	144,685	22	1,172	1,917	146,673
1941	6,225	151,212	29	1,578	6,321	153,589
1942	3,808	206,215	23	1,216	3,896	208,219
1943	4,730	164,553	130	1,722	4,923	167,035
1944	4,328	180,081	145	1,816	4,535	182,650
1945	2,965	186,757	154	1,972	3,180	189,473
1946	2,463	143,509	252	3,811	2,775	148,060
1947	1,205	115,263	139	2,685	1,404	118,686
EXPORTS			IMPORTS		TOTAL SUPPLY STOCKS, JAN.1	
1935	2,070	55,719	89	1,274	-	24,563
1936	6,170	81,890	101	1,240	24,755	24,026
1937	2,778	88,955	124	1,410	28,986	28,559
1938	7,574	80,989	148	1,387	34,634	31,500
1939	3,019	90,945	139	1,397	31,057	25,812
1940	3,970	106,631	23	970	29,465	24,663
1941	6,241	92,331	85	861	45,374	34,728
1942	12,430	141,504	42	858	64,060	56,478
1943	9,338	129,741	159	535	52,757	43,510
1944	15,434	131,429	25	568	53,007	40,308
1945	13,149	135,409	55	649	48,922	33,742
1946	6,313	106,495	247	1,480	28,961	25,684
1947	3,395	55,531	=	=	=	30,695
DECEMBER MAKE, 1935 to 1947, EXPRESSED AS INDEXES OF THE SAME MONTH IN 1939 AND 1946						
	1939	1946	1939	1946	1939	1946
	%	%	%	%	%	%
1935	-	-	-	-	-	-
1936	69.7	72.8	-	-	71.1	67.9
1937	44.1	46.1	-	-	46.1	43.9
1938	82.1	85.8	-	-	82.8	79.0
1939	100.0	104.5	-	-	100.0	95.4
1940	71.0	74.2	-	8.7	72.4	69.1
1941	241.7	252.7	-	11.5	238.8	227.8
1942	147.9	154.6	-	9.1	147.2	140.4
1943	183.7	192.0	-	51.6	186.0	177.4
1944	168.1	175.7	-	57.5	171.3	163.4
1945	115.1	120.4	-	61.1	120.1	114.6
1946	95.7	100.0	-	100.0	104.8	100.0
1947	46.8	48.9	-	55.2	53.0	50.6

1/ Includes other cheese produced in Quebec, 1936 to 1939.

2/ Farm-made cheese is included in data shown in this column.

- Not available.

= Imports not available (see Trade Report No. 101 for data).

MILK PRODUCTION AND UTILIZATION

Milk Production: The total milk production of Canada during the month of November amounted to approximately 1,069,000,000 pounds. This represented an increase of $5\frac{1}{2}$ million pounds over the same month last year. The provinces contributing to this increase were Quebec, Alberta and British Columbia, with the greatest gains being recorded in Quebec. However, the November production was 400 million pounds less than that produced in the previous month.

Fluid Sales: November sales of milk and cream (the latter expressed as milk), amounted to 336,288,000 pounds. This was almost equal to the sales of the same month of the previous year. Approximately 84 per cent of this amount was sold in the form of milk (281,107,000 pounds), and 16 per cent as cream (55,181,000 pounds). Sales of fluid milk were $8\frac{3}{4}$ million pounds less than in November 1946 while fluid cream sales, expressed as milk, were $7\frac{3}{8}$ millions greater. The decline in fluid milk sales for the Dominion as a whole was common to all provinces except British Columbia. The upward movement in cream sales shown in the Canada total was common to all provinces except Prince Edward Island, Nova Scotia, Saskatchewan and British Columbia.

Production Conditions on Farms: Normal temperatures and comparatively heavy falls of snow were reported from most sections of the Dominion during the month of December. The snowfall was above normal in the Maritime Provinces, Quebec, western Ontario and eastern part of the Prairie Provinces. In British Columbia the rainfall was slightly greater than average. Temperatures throughout Canada were about normal, but the hours of sunshine varied considerably. On the whole, there was more than the normal amount of sunshine in the Eastern Provinces, while a good deal of cloudy weather prevailed in the Prairie Provinces and in British Columbia.

Farmers in the Eastern Provinces have smaller stocks of home-grown feeds than a year ago and are finding it necessary to economize in their purchases of grains, mill feeds and concentrates on account of the high prices that now prevail. It is expected that this situation will be reflected in lower production of milk during the winter months. The increase in fluid milk prices and other food commodities may tend to reduce the demand for whole milk and cream products for direct consumption.

Reports from Dairy Correspondents indicate that the numbers of milch cows on farms in November were approximately $1\frac{1}{2}$ per cent lower than those of the same month in 1946. This situation may be compared with reports for October, showing practically no change from the previous year. There was also a slight reduction in the percentage of cows being milked and in the average milk production per cow. Dairy Correspondents' reports also indicated reduced freshenings.

Table 3 - CONCENTRATED MILK PRODUCTS AND ICE CREAM

Production and Domestic Disappearance in Canada
December, and January - December, 1935 to 1947.

Year	Whole Milk Products		Milk By-Products		Ice Cream	
	December	Jan.-Dec.	December	Jan.-Dec.	December	Jan.-Dec.
PRODUCTION						
	'000 lb.	'000 lb.	'000 lb.	'000 lb.	'000 gal.	'000 gal.
1935	3,559	78,287	1,675	27,410	-	-
1936	5,145	82,459	1,787	27,886	-	-
1937	6,488	109,004	1,750	29,098	-	-
1938	6,247	122,544	2,051	36,357	-	-
1939	9,173	132,608	2,096	34,996	361	9,053
1940	10,117	157,857	2,025	36,356	445	11,039
1941	9,663	199,693	2,197	37,104	570	14,171
1942	11,687	220,830	2,020	40,448	610	15,226
1943	9,628	221,102	1,553	38,665	682	17,243
1944	12,399	232,457	2,390	46,002	631	17,666
1945	11,693	245,705	2,355	53,561	564	16,352
1946	11,040	242,027	3,212	59,978	528	15,783
1947	11,581	260,260	2,958	75,103	1,027	23,714

DOMESTIC DISAPPEARANCE IN POUNDS PER CAPITA

Year					gal.	gal.
1935	.29	4.93	.25	2.39	-	-
1936	.26	5.70	.19	2.53	-	-
1937	.30	7.03	.14	2.56	-	-
1938	.48	7.46	.20	2.57	-	-
1939	.29	9.28	.20	3.36	.03	.80
1940	1.03	9.83	.23	3.33	.04	.97
1941	.07	10.49	.21	3.45	.05	1.23
1942	.90	13.76	.26	3.48	.05	1.31
1943	.78	15.14	.19	3.36	.06	1.46
1944	.88	13.00	.18	3.65	.05	1.48
1945	.25	14.06	.24	3.90	.05	1.35
1946	.83	13.98	.15	4.25	.04	1.28
1947	.94	16.79	.17	4.56	.08	1.91

DECEMBER MAKE, 1935 to 1947, EXPRESSED AS INDEXES OF THE SAME MONTH IN 1939 and 1946 1/

Year	1939	1946	1939	1946	1939	1946
	%	%	%	%	%	%
1935	38.8	32.2	79.9	52.1	-	-
1936	56.1	46.6	85.3	55.6	-	-
1937	70.7	58.8	83.5	54.5	-	-
1938	68.1	56.6	97.9	63.9	-	-
1939	100.0	83.1	100.0	65.3	100.0	68.4
1940	110.3	91.6	96.6	63.0	123.3	84.3
1941	105.3	87.5	104.8	68.4	157.9	108.0
1942	127.4	105.9	96.4	62.9	169.0	115.5
1943	105.0	87.2	74.1	48.3	188.9	129.2
1944	135.2	112.3	114.0	74.4	174.8	119.5
1945	127.5	105.9	112.4	73.3	156.2	106.8
1946	120.4	100.0	153.2	100.0	146.3	100.0
1947	126.3	104.9	141.1	92.1	284.5	194.5

1/ Note that base index in each column is shown as 100.

Table 4 - CONCENTRATED WHOLE MILK PRODUCTS
 Production in Canada, Exports and Imports of Principal Products
 December, and January - December, 1935 to 1947.

Year	Evaporated Whole Milk		Condensed Whole Milk		Whole Milk Powder	
	December	Jan.-Dec.	December	Jan.-Dec.	December	Jan.-Dec.
PRODUCTION						
	'000 lb.	'000 lb.	'000 lb.	'000 lb.	'000 lb.	'000 lb.
1935	2,920	66,218	515	9,149	102	2,237
1936	4,463	71,074	561	7,987	99	2,736
1937	5,206	91,331	842	11,396	410	5,455
1938	5,297	105,720	495	9,231	420	6,587
1939	8,275	116,885	456	7,571	390	6,584
1940	8,587	135,877	1,209	14,429	286	6,450
1941	7,535	165,964	1,634	24,605	475	8,314
1942	9,548	185,762	1,595	23,076	518	11,134
1943	7,030	178,368	1,600	26,915	963	15,053
1944	9,250	184,344	2,210	31,021	905	16,022
1945	9,388	200,529	1,452	28,582	726	14,851
1946	7,763	192,188	1,887	31,257	1,086	15,934
1947	8,313	212,282	2,129	28,804	900	16,267
EXPORTS						
1935	539	17,541	103	2,214	367	3,528
1936	908	13,868	72	1,356	279	3,930
1937	2,239	24,841	388	4,131	312	3,232
1938	782	27,023	113	2,675	315	4,204
1939	1,697	25,012	81	1,136	174	6,021
1940	4,971	34,746	780	6,814	285	4,348
1941	11,004	51,237	2,142	18,118	218	5,029
1942	2,749	49,229	2,288	14,595	212	2,628
1943	687	26,738	550	17,160	116	1,414
1944	867	27,325	1,340	17,908	109	1,083
1945	11,724	70,810	1,414	18,652	1,542	5,995
1946	820	47,187	747	18,316	289	4,973
1947	1,614	41,527	1,262	18,225	364	5,305
	TOTAL SUPPLY	STOCKS, JAN. 1	TOTAL SUPPLY	STOCKS, JAN. 1	IMPORTS	
1935	12,518	9,357	1,009	458	(1)	36
1936	13,659	10,455	1,086	508	81	267
1937	15,451	10,534	1,398	522	86	951
1938	20,672	15,079	1,625	1,227	-	702
1939	17,072	12,651	993	610	1	199
1940	27,815	11,765	2,366	1,180	1	17
1941	34,709	22,737	3,653	1,867	74	408
1942	28,629	16,611	4,219	1,377	1	55
1943	21,614	13,593	3,285	1,713	-	159
1944	49,784	39,662	6,627	4,596	1	170
1945	37,610	22,361	4,490	3,239	-	23
1946	30,223	20,954	5,292	3,793	(1)	35
1947	19,917	5,191(3)	5,143	2,581	(2)	(2)

Note - Supply data which appear in the first and third columns includes stocks at the beginning of the month, plus production and imports during the month. (1) Less than 500 lbs. (2) Not available on date of publication. (3) Stocks in the hands of wholesalers not included in data for January 1, 1948.

Table 5. - CONCENTRATED MILK BY-PRODUCTS
 Production in Canada, Exports and Imports of Principal Products
 December, and January - December, 1935 to 1947.

Year	Skimmilk Powder		Condensed Skimmilk		Casein	
	December	Jan.-Dec.	December	Jan.-Dec.	December	Jan.-Dec.
PRODUCTION						
	'000 lb.	'000 lb.	'000 lb.	'000 lb.	'000 lb.	'000 lb.
1935	1,058	18,890	405	4,386	71	1,204
1936	1,221	18,530	278	4,516	56	1,336
1937	1,096	18,492	319	5,000	46	1,572
1938	1,400	25,545	325	4,541	56	1,469
1939	1,444	25,339	278	3,241	42	1,671
1940	1,409	26,392	329	4,245	44	1,339
1941	1,475	26,524	376	4,560	67	1,181
1942	1,278	26,670	308	5,380	103	3,199
1943	801	22,352	179	4,041	59	3,112
1944	1,398	29,703	185	3,505	139	2,961
1945	1,469	37,111	199	3,561	71	3,683
1946	2,058	42,246	387	3,727	206	4,183
1947	1,739	52,362	227	4,337	203	6,208
EXPORTS				IMPORTS (1)		
1935	122	1,176	-	-	18	111
1936	93	1,310	-	-	1	140
1937	104	1,078	-	-	1	402
1938	184	1,176	-	-	2	227
1939	24	2,300	-	-	175	919
1940	8	924	-	-	81	2,095
1941	41	677	-	-	3	1,131
1942	53	438	-	-	33	1,883
1943	36	409	-	-	1	276
1944	-	22	-	-	4	481
1945	162	6,669	-	-	4	211
1946	1,680	6,051	-	-	-	134
1947	2,580	14,809	-	-	(2)	(2)
DOMESTIC DISAPPEARANCE IN POUNDS PER CAPITA						
1935	.19	1.61	.04	.40	.01	.12
1936	.13	1.62	.03	.44	.01	.15
1937	.10	1.59	.03	.45	-	.17
1938	.15	1.73	.02	.38	.01	.13
1939	.13	2.31	.02	.31	.02	.24
1940	.16	2.26	.03	.38	.01	.30
1941	.14	2.39	.03	.39	.01	.22
1942	.17	2.20	.03	.46	.02	.37
1943	.09	1.93	.02	.34	.03	.30
1944	.11	2.30	.01	.28	.01	.27
1945	.19	2.63	.01	.30	-	.23
1946	.06	2.87	.03	.31	.02	.27
1947	.06	2.85	.02	.36	.05	.38

(1) Condensed skimmilk is not separately listed in import returns. Condensed milk designated as such shown in trade reports consists principally of condensed whole milk products.

(2) Not available at date of publication.

(3) Less than 500 lbs.

Table 6. - PRODUCTION OF MILK PER COW AND PERCENTAGES OF COWS MILKING
Based on Reports of Dairy Correspondents, for November 1943 to 1947.

Province	Milk Production Per Cow in pounds per day						Percentage of Cows Milking					
	1943	1944	1945	1946	1947	Av.	1943	1944	1945	1946	1947	Av.
CANADA	12.1	14.8	14.7	14.8	14.3	14.1	75.2	75.9	74.8	75.1	74.9	75.2
Prince Edward Island ..	10.7	17.0	17.0	14.7	13.9	14.7	81.4	83.4	83.3	85.4	87.5	84.2
Nova Scotia	12.7	15.9	15.2	16.4	14.9	15.0	81.6	82.7	79.9	83.4	80.9	81.7
New Brunswick	11.7	16.1	16.6	15.4	13.3	14.6	78.4	78.9	83.2	81.5	77.8	80.0
Quebec	12.0	16.3	15.6	13.6	13.2	14.1	84.4	82.8	80.3	80.0	81.6	81.8
Ontario	12.8	15.4	16.0	16.2	15.4	15.2	77.0	79.2	79.3	76.6	76.5	77.7
Manitoba	11.4	11.6	11.9	13.7	12.7	12.3	66.0	61.0	63.0	70.0	67.6	65.5
Saskatchewan	10.0	13.2	11.5	12.0	11.4	11.6	63.2	69.5	63.7	66.0	63.1	65.1
Alberta	13.1	13.1	13.8	14.2	14.4	13.7	66.3	65.9	67.7	67.3	68.6	67.2
British Columbia	14.8	15.4	16.9	15.7	15.6	15.7	76.8	78.3	74.7	75.9	75.0	76.1

Table 7. - PRODUCTION OF DAIRY BUTTER AND WHEY BUTTER IN CANADA

By Provinces, November 1945, 1946 and 1947.

Province	DAIRY BUTTER			WHEY BUTTER		
	1945	1946	1947	1945	1946	1947
	'000 lb.	'000 lb.	'000 lb.	lb.	lb.	lb.
CANADA	3,517	3,613	3,788	103,089	111,416	71,545
Prince Edward Island ..	38	39	39	-	-	-
Nova Scotia	190	197	196	-	-	-
New Brunswick	360	378	376	-	-	-
Quebec	617	605	617	19,829	8,557	1,977
Ontario	418	429	485	80,605	98,665	66,949
Manitoba ,.....	401	429	412	1,342	2,083	1,596
Saskatchewan	846	888	977	-	-	-
Alberta	527	532	564	539	1,064	504
British Columbia	120	116	122	774	1,047	519

Table 8. - MILK PRODUCTION AND UTILIZATION IN CANADA, BY PROVINCES,
November, 1945, 1946 and 1947.

(Section - A)

		Total Milk Production	1	2	3	4	5	6
			Factory Production				Farm Production	
			Creamery Butter	Factory Cheese	Conc. Milk	Ice Cream	Dairy Butter	Farm Cheese
		'000 lb.	'000 lb.	'000 lb.	'000 lb.	'000 lb.	'000 lb.	'000 lb.
CANADA	1945	1,080,947	335,728	82,503	30,124	10,889	82,404	670
	1946	1,063,303	324,716	66,401	33,390	9,518	84,653	661
	1947	1,068,903	352,645	39,416	35,667	16,848	88,753	661
P.E.I.	1945	11,066	5,506	323	-	43	890	1
	1946	10,866	5,436	156	-	43	914	1
	1947	10,349	5,154	145	-	100	914	1
N.S.	1945	31,421	9,794	-	351	829	4,452	26
	1946	31,084	9,442	-	229	772	4,616	26
	1947	29,380	8,646	-	262	1,115	4,592	26
N.B.	1945	30,204	7,615	234	-	343	8,435	4
	1946	30,068	6,982	156	-	300	8,857	4
	1947	29,847	7,334	379	-	472	8,810	4
Que.	1945	311,580	110,871	30,101	7,174	1,886	14,456	28
	1946	292,394	104,217	16,910	8,735	1,758	14,175	28
	1947	306,563	126,897	4,708	9,703	3,658	14,456	28
Ont.	1945	355,942	89,549	48,426	17,215	4,916	9,794	145
	1946	357,484	90,744	45,630	21,225	4,030	10,051	145
	1947	353,888	97,281	31,519	22,536	6,530	11,364	145
Man.	1945	69,881	24,273	1,459	-	700	9,395	100
	1946	72,633	26,007	1,603	-	672	10,051	101
	1947	68,753	23,688	1,125	-	915	9,653	101
Sask.	1945	121,393	42,385	-	-	457	19,822	133
	1946	123,488	41,120	89	-	400	20,806	122
	1947	121,307	40,393	33	-	1,100	22,891	122
Alta.	1945	103,675	39,339	1,470	1,668	686	12,348	200
	1946	100,150	35,239	1,389	1,500	600	12,465	200
	1947	102,349	37,371	1,240	1,560	1,243	13,215	200
B.C.	1945	45,785	6,396	490	3,716	1,029	2,812	33
	1946	45,136	5,529	468	1,701	943	2,718	34
	1947	46,467	5,881	267	1,606	1,715	2,858	34

Table 8. - MILK PRODUCTION AND UTILIZATION IN CANADA, BY PROVINCES,

November, 1945, 1946 and 1947.

(Section - B)

		7	8	9	10	1 - 4	5 & 6	7 - 10	
		Milk Otherwise Used				Recapitulation			
		Fluid Milk	Fluid 1/ Cream	Farm-home Consumed	Fed to Livestock	Factory Production	Farm Production	Otherwise Used	
	'000 lb.	'000 lb.	'000 lb.	'000 lb.	'000 lb.	'000 lb.	'000 lb.		
CANADA	1945	286,329	49,666	147,573	55,061	459,244	83,074	538,629	
	1946	289,826	47,348	149,496	57,294	434,025	85,314	543,964	
	1947	281,107	55,181	142,555	56,070	444,576	89,414	534,913	
P.E.I.	1945	1,457	279	2,191	376	5,872	891	4,303	
	1946	1,473	250	2,213	380	5,635	915	4,316	
	1947	1,422	149	2,080	384	5,399	915	4,035	
N.S.	1945	9,957	1,209	3,811	992	10,974	4,478	15,969	
	1946	10,067	1,071	3,849	1,012	10,443	4,642	15,999	
	1947	9,130	816	3,811	982	10,023	4,618	14,739	
N.B.	1945	5,910	607	6,086	970	8,192	8,439	13,573	
	1946	6,136	365	6,269	999	7,438	8,861	13,769	
	1947	5,351	688	5,830	979	8,185	8,814	12,848	
Que.	1945	92,478	15,582	33,115	5,889	150,032	14,484	147,064	
	1946	94,870	12,704	32,784	6,213	131,620	14,203	146,571	
	1947	92,680	17,261	31,145	6,027	144,966	14,484	147,113	
Ont.	1945	115,148	13,566	41,672	15,511	160,106	9,939	185,897	
	1946	111,949	14,191	42,922	16,597	161,629	10,196	185,659	
	1947	108,222	17,035	42,493	16,763	157,866	11,509	184,513	
Man.	1945	12,122	3,830	12,544	5,458	26,432	9,495	33,954	
	1946	12,591	3,840	12,419	5,349	28,282	10,152	34,199	
	1947	12,056	3,997	11,922	5,296	25,728	9,754	33,271	
Sask.	1945	12,356	3,597	28,058	14,585	42,842	19,955	58,596	
	1946	12,611	3,980	28,900	15,460	41,609	20,928	60,951	
	1947	12,405	3,705	26,010	14,648	41,526	23,013	56,768	
Alta.	1945	17,836	4,796	16,655	8,677	43,163	12,548	47,964	
	1946	19,717	3,820	16,630	8,590	38,728	12,665	48,757	
	1947	17,677	5,460	15,965	8,418	41,414	13,415	47,520	
B.C.	1945	19,065	6,200	3,441	2,603	11,631	2,845	31,309	
	1946	20,412	7,127	3,510	2,694	8,641	2,752	33,743	
	1947	22,164	6,070	3,299	2,573	9,469	2,892	34,106	

1/ Cream expressed as milk.



Table 9. - UTILIZATION OF MILK IN PERCENTAGES OF TOTAL MILK PRODUCTION in Canada, by Provinces, November, 1946 and 1947.

Province		Sold for Distribution and Used in Manufacture				Used on Farms	
		Creamery Butter	Fluid Sales	Factory Cheese	Conc. Milk & Ice Cream	Dairy Butter	Other Purposes
		%	%	%	%	%	%
CANADA	1946	30.5	31.7	6.3	4.0	8.0	19.5
	1947	33.0	31.5	3.7	4.9	8.3	18.6
Prince Edward Island	1946	50.0	15.9	1.4	0.4	8.4	23.9
	1947	49.8	15.2	1.4	1.0	8.8	23.8
Nova Scotia	1946	30.4	35.8	-	3.2	14.9	15.7
	1947	29.4	33.9	-	4.7	15.6	16.4
New Brunswick ..	1946	23.2	21.6	0.5	1.0	29.5	24.2
	1947	24.6	20.2	1.3	1.6	29.5	22.8
Quebec	1946	35.6	36.8	5.8	3.6	4.9	13.3
	1947	41.4	35.9	1.5	4.4	4.7	12.1
Ontario	1946	25.4	35.3	12.8	7.1	2.8	16.6
	1947	27.5	35.4	8.9	8.2	3.2	16.8
Manitoba	1946	35.8	22.6	2.2	1.0	13.8	24.6
	1947	34.5	23.3	1.6	1.3	14.1	25.2
Saskatchewan ...	1946	33.3	13.4	0.1	0.3	16.9	36.0
	1947	33.3	13.3	-	0.9	18.9	33.6
Alberta	1946	35.2	23.5	1.4	2.1	12.4	25.4
	1947	36.5	22.6	1.2	2.8	12.9	24.0
British Columbia	1946	12.3	61.0	1.0	5.9	6.0	13.8
	1947	12.7	60.8	0.6	7.1	6.1	12.7

Note: The figures given in this table represent relationship to total with milk production taken as 100.