

23-001
C.2

MAR 5 1948

STATISTICS STATISTIQUE
CANADA CANADA
LIBRARY
BIBLIOTHEQUE

Published by Authority of the Rt. Hon. C. D. Howe, M.P., Minister of Trade and Commerce

DOMINION BUREAU OF STATISTICS

MONTHLY DAIRY REVIEW OF CANADA 1948

Dominion Statistician:
Director, Agricultural Division:
In Charge of Dairy Statistics:

Herbert Marshall
C. V. Parker
P. H. Ferguson

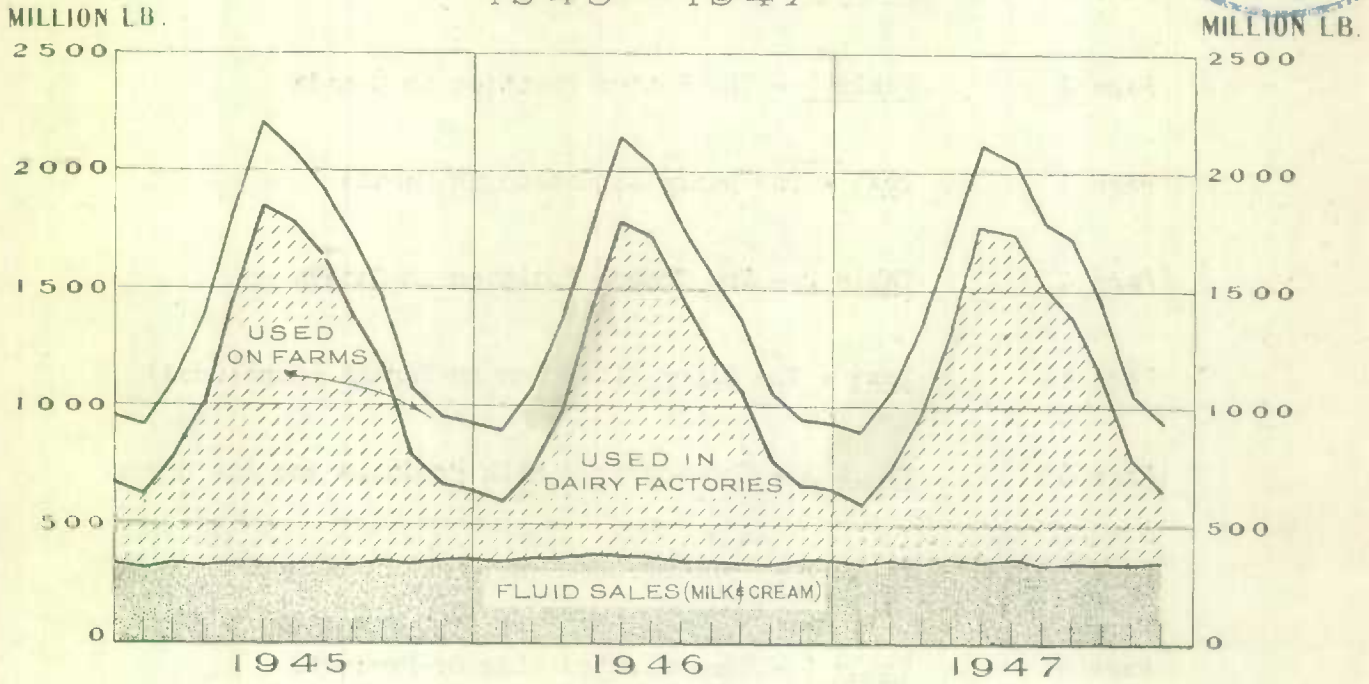
Volume No. IX, Report No. 1

(January)

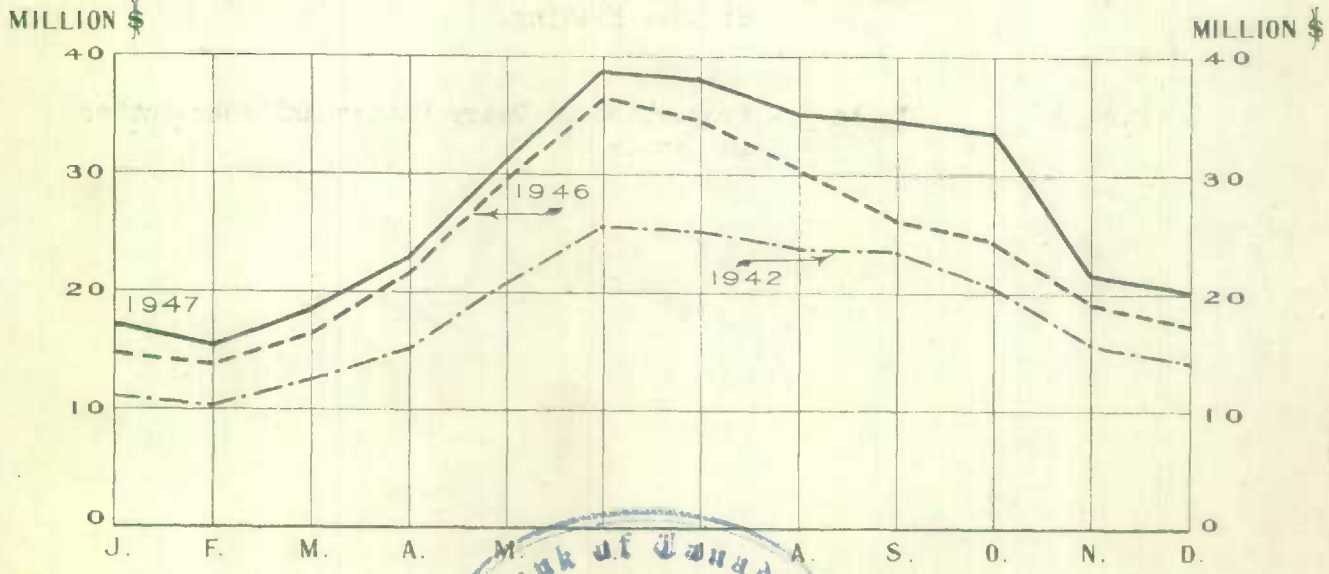
Published March 2, 1948.



MILK PRODUCTION AND UTILIZATION 1945 - 1947



SALES INCOME FROM DAIRYING



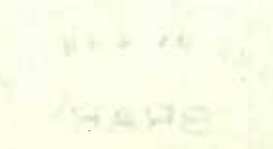
Price: \$1.00 a year





CONTENTS

Page 1	<u>Summary</u> - The Dairy Position in Brief
Page 2	<u>Table 1</u> - The Butter Position in Canada
Page 3	<u>Text</u> - The Dairy Situation in Canada
Page 4	<u>Table 2</u> - The Cheese Position in Canada
Page 5	<u>Text</u> - The Dairy Situation in Canada (Concluded)
Page 6	<u>Table 3</u> - Concentrated Milk Products and Ice Cream
Page 7	<u>Table 4</u> - Concentrated Whole Milk Products
Page 8	<u>Table 5</u> - Concentrated Milk By-Products
Page 9	<u>Table 6</u> - Production of Milk Per Cow and Percentages of Cows Milking.
Page 9	<u>Table 7</u> - Production of Dairy Butter and Whey Butter in Canada



THE DAIRY POSITION IN BRIEF

The production of creamery butter in the month of January was less than that of the same month of the preceding year by 9 per cent.

The total butter supply in the month of January was $3\frac{1}{2}$ per cent less than that of the same month of 1947, and the domestic disappearance was reduced by 5 per cent.

Wholesale butter prices at Montreal quoted by the Canadian Commodity Exchange averaged 68 cents per pound in January as against 40 cents in the same month of 1947. Cheese prices averaged $34\frac{1}{2}$ cents as against 23 cents in the same month of the previous year.

The total farm milk production of Canada in the month of December was $2\frac{1}{2}$ per cent below that of December, 1946. All provinces with the exception of Alberta and British Columbia contributed to this decrease.

Fluid sales in the month of December were approximately $8\frac{1}{2}$ million pounds less than those of the same month last year. Fluid milk declined 5 per cent while fluid cream on a milk basis increased 15 per cent. Sales of milk by provinces revealed increases in all sections of the Dominion with the exception of British Columbia, while cream sales increased in all provinces but Saskatchewan and British Columbia.

Milk used in dairy factory production decreased approximately 3 per cent during December, and increased $3\frac{1}{2}$ per cent during the entire year as compared with the same period of 1946.

The total numbers of milch cows on farms showed a reduction of approximately 2 per cent, as compared with a reduction of $1\frac{1}{2}$ per cent in the previous month.

The snowfall in January was much lighter than last year, with bright, sunny weather but quite low temperatures in all sections of the Dominion except the far West. While there are no indications of any feed shortages, farmers are purchasing smaller quantities of mill feeds and concentrates and stocks of grain and mill feeds are running low. It is probable that this situation will continue to have an unfavourable effect on milk production.

Table 1. - THE BUTTER POSITION IN CANADA
January 1936 to 1948.

Year	Creamery Butter	Dairy Butter	Total Butter 1/
	January	January	January
PRODUCTION			
	'000 lb.	'000 lb.	'000 lb.
1936	9,420	7,490	16,946
1937	8,950	7,370	16,366
1938	8,369	7,173	15,588
1939	9,806	6,918	16,770
1940	10,462	6,679	17,192
1941	11,734	6,559	18,346
1942	10,728	6,227	17,024
1943	13,120	4,450	17,603
1944	10,882	4,341	15,268
1945	11,422	4,207	15,685
1946	9,629	4,368	14,039
1947	9,815	4,514	14,362
1948	8,948	3,586	12,556

DOMESTIC DISAPPEARANCE IN POUNDS PER CAPITA

1936	1.49	.69	2.19
1937	1.47	.67	2.15
1938	1.60	.65	2.26
1939	1.61	.62	2.24
1940	1.65	.58	2.24
1941	1.58	.58	2.17
1942	1.89	.54	2.44
1943	1.82	.39	2.21
1944	2.05	.38	2.44
1945	1.84	.36	2.21
1946	1.85	.36	2.22
1947	1.72	.36	2.08
1948	1.65	.28	1.93

JANUARY MAKE, 1936 TO 1948, EXPRESSED AS INDEXES OF THE SAME MONTH IN 1939 AND 1947 2/

	1939	1947	1939	1947	1939	1947
	%	%	%	%	%	%
1936	96.1	96.0	108.3	165.9	101.0	118.0
1937	91.3	91.2	106.5	163.3	97.6	114.0
1938	85.4	85.3	103.7	158.9	93.0	108.5
1939	100.0	99.9	100.0	153.3	100.0	116.8
1940	106.7	106.6	96.5	148.0	102.5	119.7
1941	119.7	119.6	94.8	145.3	109.4	127.7
1942	109.4	109.3	90.0	137.9	101.5	118.5
1943	133.8	133.7	64.3	98.6	105.0	122.6
1944	111.0	110.9	62.7	96.2	91.0	106.3
1945	116.5	116.4	60.8	93.2	93.5	109.2
1946	98.2	98.1	63.1	96.8	83.7	97.8
1947	100.1	100.0	65.3	100.0	85.6	100.0
1948	91.3	91.2	51.8	79.4	74.9	87.4

1/ Includes Whey Butter amounting to 22,089 pounds in January, 1948.

2/ Note the base index in each column is shown as 100.

THE BUTTER SITUATION

Production: Creamery butter production in January reached a total of 9 million pounds, less than that of the same month of the previous year by 867 thousand pounds. The dairy butter make was approximately $3\frac{1}{2}$ million pounds, while whey butter fell to 22 thousand pounds. Comparisons made with January, 1947, indicate decreases in all classes of butter.

Total Supply: The total supply of butter (creamery, dairy and whey), which is represented by stocks at beginning plus January production, amounted to approximately 56 $\frac{1}{4}$ million pounds. This represented a decline of approximately 2 million pounds in comparison with the total supply reported in January, 1947. The reduced production coupled with the high level of domestic demand during the greater part of 1947 was responsible for this situation. It is apparent, however, that higher prices are now beginning to operate as a check on butter sales.

Domestic Disappearance: The domestic disappearance of total butter in January was 24 $\frac{3}{4}$ million pounds as compared with 26 $\frac{1}{4}$ million pounds a year ago and 29 $\frac{1}{4}$ million pounds in the previous month. In pounds per capita, the January disappearance was 1.93 pounds in comparison with 2.33 pounds last month and 2.08 pounds in the same month last year.

SUPPLIES OF OTHER FACTORY PRODUCTS

Cheddar Cheese Production: The January make of cheddar cheese fell to slightly less than 1 million pounds, almost $\frac{3}{4}$ million pounds less than the amount made in the same month of 1947. It may be noted from Table 2 that the January make was the lowest output for that month during the last ten years.

Concentrated Milk Products: The total quantity of concentrated milk products manufactured in January was 13 million pounds. Compared with the same month of the previous year the January production represented a decline of over $\frac{3}{4}$ million pounds. The output of concentrated whole milk products was less than that of the preceding January by 70 thousand pounds. Milk by-products registered a reduction of $\frac{3}{4}$ million pounds. The domestic disappearance of concentrated whole milk products per capita (see Table 3), was .85 pounds in January as against 1.10 pounds in the same month last year. The domestic disappearance of milk by-products for January, 1947 and 1948, amounted to .27 and .21 pounds, respectively.

Ice Cream: The quantity of ice cream manufactured in January was approximately 1 million gallons, about $\frac{1}{2}$ million gallons more than that manufactured in the same month a year ago.

Table 2. - THE CHEESE POSITION IN CANADA

January 1936 to 1948.

Year	Cheddar Cheese 1/		Other Cheese		Total Cheese 2/			
	January		January		January			
PRODUCTION								
	'000 lb.		'000 lb.		'000 lb.			
1936	1,062		-		1,150			
1937	1,000		-		1,084			
1938	694		-		772			
1939	1,468		-		1,540			
1940	1,832		29		1,929			
1941	1,118		39		1,223			
1942	5,065		30		5,161			
1943	2,133		118		2,314			
1944	2,611		116		2,790			
1945	2,590		147		2,799			
1946	1,699		140		1,902			
1947	1,686		243		1,992			
1948	958		123		1,140			
	EXPORTS		IMPORTS		TOTAL SUPPLY		STOCKS, FEB. 1	
1936	1,015		68		25,781		22,217	
1937	630		66		25,176		21,867	
1938	355		66		29,397		26,551	
1939	1,329		60		33,100		29,885	
1940	1,966		220		27,961		20,720	
1941	867		22		25,908		21,500	
1942	6,217		73		39,962		26,506	
1943	2,939		66		58,858		48,550	
1944	10,122		117		46,417		33,297	
1945	5,360		56		43,163		32,499	
1946	9,332		154		35,798		24,368	
1947	2,119		71		27,741		23,428	
1948	5,137		=		=		26,957	
JANUARY MAKE, 1936 TO 1948, EXPRESSED AS INDEXES OF THE SAME MONTH IN 1939 AND 1947.								
	1939		1947		1939		1947	
	%		%		%		%	
1936	72.3		63.0		-		74.7	
1937	68.1		59.3		-		70.4	
1938	47.3		41.2		-		50.1	
1939	100.0		87.1		-		100.0	
1940	124.8		108.7		-		125.3	
1941	76.2		66.3		-		79.4	
1942	345.0		300.4		-		335.1	
1943	145.3		126.5		-		150.3	
1944	177.9		154.9		-		181.2	
1945	176.4		153.6		-		181.8	
1946	115.7		100.8		-		123.5	
1947	114.9		100.0		-		129.4	
1948	65.3		56.8		-		74.0	

1/ Includes other cheese produced in Quebec, 1936 to 1939.

2/ Farm-made cheese is included in data shown in this column.

- Not available.

= Imports not available at date of publication. (see Trade Report No. 101 for data).

MILK PRODUCTION AND UTILIZATION

Milk Production: The total milk production of Canada in the month of December amounted to 930,469,000 pounds and the production for the year reached a total of 17,213,987,000 pounds. The former represented a decrease of $23\frac{1}{2}$ million pounds, as compared with December, 1946, while the latter was 258 million pounds above that of the year 1946.

Fluid Sales: December sales of milk and cream (the latter expressed as milk), amounted to 346,573,000 pounds, 84 per cent of which was sold in the form of milk and 16 per cent in the form of cream. The December sales were approximately $8\frac{1}{2}$ million pounds less than those of the same month of the previous year. Milk sales declined 16 million pounds, while cream sales expressed as milk were $7\frac{1}{2}$ million pounds greater than those of December, 1946. Fluid sales for the year 1947 amounted to 4,162,539,000 pounds (3,463,250,000 pounds of fluid milk and 699,289,000 pounds of cream). This represented a decrease of approximately $91\frac{1}{2}$ million pounds. Fluid milk sales decreased 183 million pounds while fluid cream sales were increased by 91 million pounds.

Production Conditions on Farms: Reports from Dairy Correspondents indicate that the numbers of milch cows on farms in December were approximately $1\frac{3}{4}$ per cent lower than those of the same month of 1946. This situation may be compared with reports for November when the reduction was approximately $1\frac{1}{2}$ per cent. There was also a reduction of 5 per cent in the percentage of cows being milked and the average milk production per cow declined from 13.8 to 13.1 pounds per day. Dairy Correspondents' reports indicated an increase in freshenings in December as compared with a decrease in November.

Heavy falls of snow were reported from the Maritimes in January, but elsewhere the snowfall was the same or much less than last year. Thus, the roads were kept open in most sections, permitting farmers to make regular deliveries to factories. The weather was very cold in all sections of the country with the exception of the Western Prairie region and British Columbia. However, in all parts of the Dominion, west of the Maritimes, the number of sunshine hours exceeded those of January, 1947 and together with the light snowfall produced quite favourable conditions for dairying.

Farmers in the Eastern Provinces have smaller stocks of home-grown feeds than a year ago and are finding it necessary to economize in their purchases of grains, mill feeds and concentrates on account of the high prices that now prevail. It is expected that this situation will be reflected in lower milk production during the remainder of the winter. The increase in fluid milk prices and other food commodities may tend to reduce the demand for whole milk and cream products for direct consumption.

Table 3. - CONCENTRATED MILK PRODUCTS AND ICE CREAM

Production and Domestic Disappearance in Canada
January 1936 to 1948

Year	Whole Milk Products	Milk By-Products	Ice Cream
	January	January	January
PRODUCTION			
	'000 lb.	'000 lb.	'000 gal.
1936	3,476	1,715	-
1937	5,111	1,770	-
1938	6,951	1,700	-
1939	5,180	2,125	363
1940	7,773	2,069	444
1941	10,189	2,204	571
1942	8,766	2,150	615
1943	10,356	1,751	606
1944	10,276	1,547	838
1945	12,522	2,355	795
1946	9,479	2,411	803
1947	10,558	3,268	763
1948	10,488	2,494	1,021

DOMESTIC DISAPPEARANCE IN POUNDS PER CAPITA

Year	Whole Milk Products	Milk By-Products	Ice Cream
1936	.24	.13	gal. -
1937	.53	.16	-
1938	.60	.15	-
1939	.56	.21	.03
1940	.82	.27	.04
1941	.83	.28	.05
1942	1.00	.18	.05
1943	.90	.17	.05
1944	.81	.19	.07
1945	1.28	.22	.07
1946	1.12	.26	.07
1947	1.10	.27	.06
1948	.85	.21	.08

JANUARY MAKE, 1936 TO 1948, EXPRESSED AS INDEXES OF THE SAME MONTH IN 1939 AND 1947 1/

Year	1939	1947	1939	1947	1939	1947
	%	%	%	%	%	%
1936	67.1	32.9	80.7	52.5	-	-
1937	98.7	48.4	83.3	54.2	-	-
1938	134.2	65.8	80.0	52.0	-	-
1939	100.0	49.1	100.0	65.0	100.0	47.6
1940	150.1	73.6	97.4	63.3	122.3	58.2
1941	196.7	96.5	103.7	67.4	157.3	74.8
1942	169.2	83.0	101.2	65.8	169.4	80.6
1943	199.9	98.1	82.4	53.6	166.9	79.4
1944	198.4	97.3	72.8	47.3	230.9	109.8
1945	241.7	118.6	110.8	72.1	219.0	104.2
1946	183.0	89.8	113.5	73.8	221.2	105.2
1947	203.8	100.0	153.4	100.0	210.2	100.0
1948	202.5	99.3	117.4	76.3	281.3	133.8

1/ Note that base index in each column is shown as 100.

Table 4. - CONCENTRATED WHOLE MILK PRODUCTS
Production and Domestic Disappearance in Canada
January 1936 to 1948

Year	Evaporated Whole Milk January	Condensed Whole Milk January	Whole Milk Powder January		
PRODUCTION					
	'000 lb.	'000 lb.	'000 lb.		
1936	2,715	605	67		
1937	4,183	596	213		
1938	5,825	607	377		
1939	4,138	574	239		
1940	6,794	369	452		
1941	8,398	1,304	378		
1942	7,003	1,036	612		
1943	8,052	1,582	667		
1944	8,462	929	806		
1945	9,711	1,680	981		
1946	7,524	1,267	555		
1947	8,121	1,345	982		
1948	8,225	1,306	781		
EXPORTS					
1936	581	47	519		
1937	664	173	194		
1938	1,381	307	359		
1939	385	92	382		
1940	1,501	63	403		
1941	4,487	168	218		
1942	3,508	773	172		
1943	1,375	2,100	152		
1944	1,667	1,300	75		
1945	7,631	1,769	56		
1946	3,650	631	75		
1947	901	1,285	125		
1948	752	1,600	497		
	TOTAL SUPPLY	STOCKS, FEB. 1	TOTAL SUPPLY	STOCKS, FEB. 1	IMPORTS
1936	12,072	8,492	1,063	914	ø
1937	14,638	8,810	1,106	483	8
1938	16,359	8,791	1,130	469	45
1939	19,217	13,431	1,801	1,020	8
1940	19,445	9,101	979	535	ø
1941	20,163	14,922	2,487	747	-
1942	29,740	16,137	2,906	1,291	18
1943	24,663	13,623	2,960	885	-
1944	22,055	11,988	2,659	1,328	1
1945	49,373	29,773	6,276	3,361	1
1946	29,885	14,988	4,507	2,183	-
1947	29,175	16,891	5,138	2,389	-
1948	17,638	3,354 (✱)	3,887	2,526	(✱)

Note - Supply data which appear in the first and third columns include stocks at the beginning of the month, plus production and imports during the month. (ø) Less than 500 lbs.

(✱) Not available on date of publication. (✱) Stocks in the hands of wholesalers not included in data for February 1, 1948.

Table 5. - CONCENTRATED MILK BY-PRODUCTS

Production in Canada, Exports and Imports of Principal Products
January 1936 to 1948

Year	Skim Milk Powder	Condensed Skim Milk	Casein
	January	January	January
PRODUCTION			
	'000 lb.	'000 lb.	'000 lb.
1936	1,097	366	50
1937	1,093	311	93
1938	1,065	272	39
1939	1,525	168	93
1940	1,491	265	64
1941	1,493	389	58
1942	1,368	444	80
1943	1,024	225	72
1944	810	171	42
1945	1,598	193	126
1946	1,619	173	60
1947	1,999	321	196
1948	1,381	322	116
EXPORTS		IMPORTS	
1936	173	-	17
1937	65	-	3
1938	120	-	17
1939	205	-	60
1940	41	-	318
1941	3	-	44
1942	32	-	29
1943	-	-	10
1944	-	-	112
1945	-	-	10
1946	132	-	81
1947	376	-	-
1948	519	-	=
DOMESTIC DISAPPEARANCE IN POUNDS PER CAPITA			
1936	.05	.05	.01
1937	.10	.03	.01
1938	.09	.03	.01
1939	.18	.01	-
1940	.15	.03	.05
1941	.21	.03	.01
1942	.11	.04	.01
1943	.10	.02	.01
1944	.09	.02	.03
1945	.15	.02	.01
1946	.17	.02	.02
1947	.15	.03	.03
1948	.16	.02	-

(1) Condensed skim milk is not separately listed in import returns. Condensed Milk designated as such shown in trade reports consists principally of condensed whole milk products.

= Not available at date of publication. (see Trade Report No. 101 for data).

Table 6. - PRODUCTION OF MILK PER COW AND PERCENTAGES OF COWS MILKING
Based on Reports of Dairy Correspondents, for December 1943 to 1947.

Province	Milk Production Per Cow in pounds per day						Percentage of Cows Milking					
	1943	1944	1945	1946	1947	Av.	1943	1944	1945	1946	1947	Av.
CANADA	11.7	13.5	13.1	13.8	13.1	13.0	69.1	68.7	69.0	69.6	66.0	68.5
Prince Edward Island ..	11.9	17.8	15.0	14.1	12.4	14.2	81.9	88.5	79.0	74.5	77.6	80.3
Nova Scotia	12.9	15.3	15.1	14.7	13.5	14.3	82.7	79.8	79.8	80.7	78.8	80.4
New Brunswick	14.8	17.5	15.3	13.0	11.5	14.4	78.6	80.5	77.0	73.7	73.0	76.6
Quebec	9.9	13.9	12.9	11.4	10.3	11.7	67.6	62.7	68.3	67.9	65.1	67.5
Ontario	13.5	13.7	12.4	14.9	14.0	13.7	70.9	69.2	67.0	68.6	66.9	68.5
Manitoba	11.2	10.5	11.3	13.0	12.3	11.7	65.1	58.4	62.4	66.7	64.6	63.4
Saskatchewan	11.0	12.6	11.3	11.7	10.9	11.5	67.7	69.2	60.1	61.8	61.6	64.1
Alberta	12.5	12.6	12.4	14.2	13.2	13.0	63.3	64.6	63.1	68.4	64.0	64.7
British Columbia	14.8	16.2	14.8	14.8	15.5	15.2	76.5	78.7	75.1	73.7	76.4	76.1

Table 7. - PRODUCTION OF DAIRY BUTTER AND WHEY BUTTER IN CANADA
By Provinces, December 1945, 1946 and 1947.

Province	DAIRY BUTTER			WHEY BUTTER		
	1945	1946	1947	1945	1946	1947
	'000 lb.	'000 lb.	'000 lb.	lb.	lb.	lb.
CANADA	3,327	3,419	3,586	43,019	51,994	35,897
Prince Edward Island ..	32	33	33	-	-	-
Nova Scotia	193	200	198	-	-	-
New Brunswick	278	292	291	-	-	-
Quebec	565	554	546	9,294	6,082	2,144
Ontario	386	396	451	31,329	43,520	32,188
Manitoba	389	416	406	832	688	1,008
Saskatchewan	846	888	977	-	-	-
Alberta	533	538	576	637	821	-
British Columbia	105	102	108	927	883	557

STATISTICS CANADA LIBRARY
BIBLIOTHÈQUE STATISTIQUE CANADA



1010779655