

DEC 01 1948 *James*

Published by Authority of the Rt. Hon. C. D. Howe, M.P., Minister of Trade and Commerce

DOMINION BUREAU OF STATISTICS

# MONTHLY DAIRY REVIEW OF CANADA 1948

Dominion Statistician:  
Director, Agriculture Division  
in Charge of Dairying Statistics

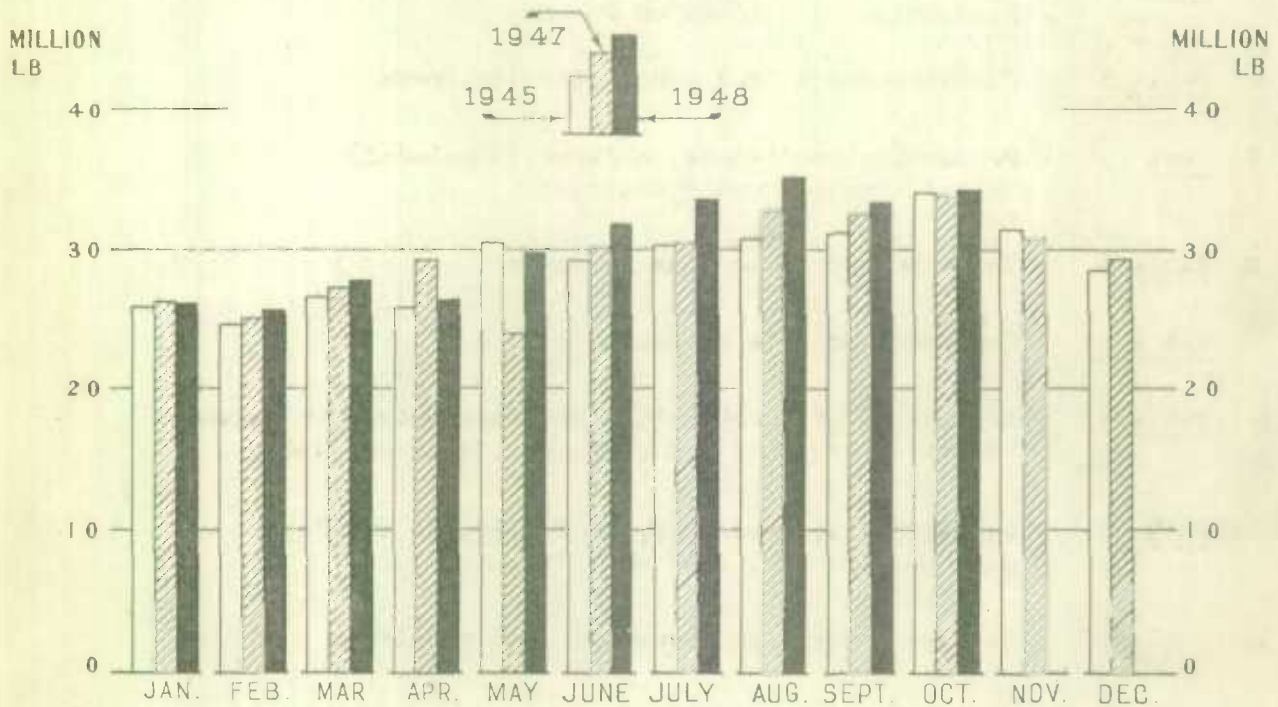
Herbert Marshall  
C. V. Parker  
P. H. Ferguson

Volume No. IX, Report No. 11

(NOVEMBER)

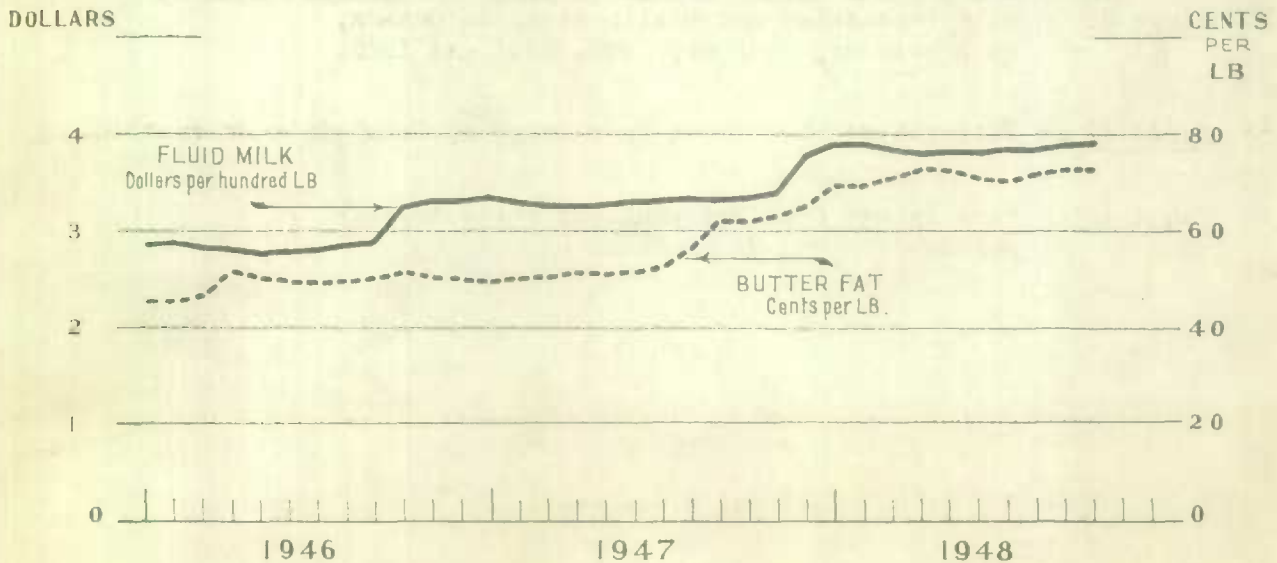
Published December 28, 1948

## DOMESTIC DISAPPEARANCE OF BUTTER\*



\* Includes Creamery, Dairy and whey Butter

## FARM PRICES OF FLUID MILK AND BUTTER FAT



Price: \$1.00 a year.

## C O N T E N T S

- Page 1 Summary - The Dairy Position in Brief
- Page 2 Table 1 - The Butter Position in Canada
- Page 3 Text - The Butter Situation  
Supplies of Other Factory Products
- Page 4 Table 2 - The Cheese Position in Canada
- Page 5 Text - Milk Production and Utilization  
Production Conditions on Farms
- Page 6 Table 3 - Concentrated Milk Products and Ice Cream
- Page 7 Text - Production Conditions on Farms (Concluded)  
United Kingdom Cheese Contract
- Page 8 Table 4 - Concentrated Whole Milk Products
- Page 9 Table 5 - Concentrated Milk By-Products
- Page 10 Table 6 - Production of Dairy Butter and Whey Butter in Canada,  
by Provinces, Oct. and Jan.-Oct., 1947 and 1948.
- Table 7 - Supply and Disappearance of Butter, in Canada,  
June to November, 1947 and 1948.
- Page 11 Table 8 - Weather Report for November, 1947 and 1948.
- Page 12 Table 9A - Milk Production and Utilization, in Canada,  
by Provinces, October, 1946, 1947 and 1948.
- Page 13 Table 9B - Milk Production and Utilization, in Canada,  
by Provinces, October, 1946, 1947 and 1948.
- Page 14 Table 10 - Utilization of Milk in Percentage of Total Milk Production.
- Page 15 Table 11 - Farm Income from Dairying and Price Average  
per Hundred Pounds of Milk.

23-001  
C-2  
DOMINION BUREAU OF STATISTICS

AGRICULTURE DIVISION

OTTAWA, CANADA

STATISTICS STATISTIQUE  
CANADA CANADA

Dominion Statistician: Herbert Marshall  
Director, Agriculture Division: C.V. Parker  
In Charge of Dairying Statistics: P.H. Ferguson

APR 14 1948

LIBRARY  
BIBLIOTHÈQUE

ERRATA

The Dairy Review of Canada for the month of November, published on December 28th, 1948 is subject to the following corrections:

Page 1 - THE DAIRY POSITION IN BRIEF

Paragraph 1 should read as follows: The domestic disappearance of total butter during the month of November increased approximately  $5\frac{1}{2}$  per cent over that of the same month last year; and the January-November disappearance was  $4\frac{1}{2}$  per cent greater than that of the same eleven-month period in 1947.

Page 2 - Table 1 - THE BUTTER POSITION IN CANADA

Under the heading 'Domestic Disappearance in Pounds Per Capita', creamery butter should read 2.18 and 21.69 instead of 1.95 and 21.46. Total butter should read 2.52 and 26.22 instead of 2.29 and 25.99.

Page 3 - THE BUTTER SITUATION

Paragraph 2 - Total Supply - should read as follows: The total quantity of creamery, dairy and whey butter produced in November plus stocks at the beginning of November amounted to approximately  $79\frac{1}{2}$  million pounds. This represented a decline of about 11 million pounds in comparison with the total supply reported in November, 1947.

Paragraph 3 - Domestic Disappearance - should read as follows: The domestic disappearance of all butter in the month of November was the lowest since June this year. The disappearance of  $32\frac{1}{4}$  million pounds may be compared with  $34\frac{1}{4}$  million pounds in the previous month, and  $30\frac{3}{4}$  million pounds in November, 1947. In pounds per capita, the domestic disappearance in November, 1948, was 2.52 pounds as against 2.67 pounds last month and 2.44 pounds in November, 1947. The cumulative disappearance of  $336\frac{3}{4}$  million pounds in the first eleven months of 1948 was  $14\frac{1}{2}$  million pounds greater than that of the January-November period of 1947. On a per capita basis it advanced from 25.60 pounds to 26.22 pounds.

Page 10 - Table 7 - SUPPLY AND DISAPPEARANCE OF CREAMERY BUTTER IN CANADA

The imports of creamery butter during November amounted to 4,480,000 pounds instead of 1,480,000 pounds as shown. This changes the total supply and domestic disappearance of creamery butter from 71,814,000 pounds to 74,814,000, and 24,982,000 pounds to 27,982,000, respectively.

RECEIVED  
BIOLOGICAL

...

...

...

...

## THE DAIRY POSITION IN BRIEF

The domestic disappearance of total butter during the month of November decreased approximately  $4\frac{1}{2}$  per cent from that of the same month last year; but the January-November disappearance was  $3\frac{1}{2}$  per cent greater than that of the same eleven-month period in 1947.

Creamery butter production in the month of November (as previously published) was 9 per cent more than that recorded in the same month of the previous year, but the January-November output was 3 per cent less than the quantity produced in the eleven-month period of 1947.

Dairy butter production has been provisionally estimated at  $4\frac{1}{4}$  million pounds in November, making a total of 57 million pounds for the eleven-month period of 1948, a gain of approximately 8 per cent over the January-November period of 1947.

Stock holdings of butter on December 1 were about  $13\frac{1}{4}$  per cent less than those of November 1, and fell 21 per cent below those of the same date last year; and the total supply (represented by stocks at the beginning of the month, plus butter produced during the month), decreased  $13\frac{3}{4}$  per cent from last month, and  $15\frac{1}{2}$  per cent from November, 1947.

Butter prices at Montreal based on quotations of the Canadian Commodity Exchange for first grade solids, averaged  $68\frac{1}{2}$  cents per pound in November as against 60  $\frac{3}{8}$  cents in the same month last year.

Cheese prices at Montreal Western Cheese sold for domestic use showed a price average of 34 cents per pound as compared with 26 cents per pound in November, 1947.

The total milk production of Canada as estimated for the month of October was approximately 10 per cent less than that of October, 1947. Increases occurred in four of the Provinces, Prince Edward Island, Nova Scotia, New Brunswick and British Columbia. For the ten-month period, January-October, there was a decrease of  $4\frac{1}{2}$  per cent as compared with the same ten-month period of 1947.

Fluid sales in the month of October were approximately  $3\frac{3}{4}$  per cent less than those of the same month last year. Fluid milk declined 3 per cent while fluid cream on a milk basis was reduced 6 per cent. During the ten-month period of 1948, fluid sales showed a reduction of nearly 4 per cent as compared with January-October, 1947. Fluid milk declined approximately 4 per cent while fluid cream on a milk basis decreased almost 5 per cent.

Milk used in dairy factory production in the month of October declined almost  $13\frac{1}{2}$  per cent in comparison with the same month of the previous year.

Farm income from dairying in October was approximately 7 per cent above that of the same month of the previous year; and the total for the ten-month period January to October was almost 21 per cent above that of the same period in 1947. The average price of milk sold off farms for all purposes averaged \$3.00 per hundred in October, and \$2.91 in the January-October period of 1948 as against \$2.51 and \$2.31 per hundred, respectively, in the corresponding periods of the previous year.

Production Conditions: The weather was exceptionally mild during the month of November with some areas showing the highest temperatures on record. The precipitation was heavier than usual in the Eastern Provinces, while light rainfall was recorded in the Prairie Provinces. Heavy rains in the Fraser Valley and Coastal Areas of British Columbia, further accentuated the wet weather problem that has prevailed throughout the season. In the Eastern Provinces fall pastures improved as the result of increased moisture, and the feed supplies appear to be quite adequate in all sections of the Dominion.

Table 1. - THE BUTTER POSITION IN CANADA

November, and January - November, 1936 to 1948.

Year	Creamery Butter		Dairy Butter 1/		Total Butter 2/	
	November	Jan.-Nov.	November	Jan.-Nov.	November	Jan.-Nov.
PRODUCTION						
	'000 lb.	'000 lb.	'000 lb.	'000 lb.	'000 lb.	'000 lb.
1936	13,554	240,143	6,374	89,902	20,003	331,505
1937	13,303	237,210	6,273	88,316	19,668	327,298
1938	14,694	256,088	6,099	85,752	20,884	343,613
1939	15,407	255,707	5,862	82,415	21,360	339,891
1940	15,085	252,394	5,640	79,405	20,825	333,763
1941	14,954	273,753	5,539	78,032	20,601	353,892
1942	16,973	269,904	5,258	74,003	22,365	346,533
1943	15,766	299,344	3,709	52,231	19,585	353,722
1944	16,517	286,392	3,658	51,157	20,322	340,138
1945	14,329	283,220	3,517	49,956	17,981	335,939
1946	13,839	261,117	3,613	50,806	17,587	314,345
1947	15,056	280,587	3,788	52,709	18,928	335,269
1948	16,424	271,838	4,242	57,019	20,733	330,373
DOMESTIC DISAPPEARANCE IN POUNDS PER CAPITA						
1936	2.06	20.36	.59	8.21	2.66	28.71
1937	1.97	20.94	.58	8.01	2.56	29.11
1938	2.13	20.85	.55	7.66	2.69	28.67
1939	1.95	21.14	.52	7.34	2.48	28.64
1940	2.19	22.01	.50	6.96	2.70	29.14
1941	2.24	22.11	.49	6.84	2.73	29.13
1942	2.53	24.52	.46	6.46	3.01	31.20
1943	2.22	22.06	.34	4.54	2.57	26.78
1944	2.37	23.82	.31	4.41	2.70	28.46
1945	2.36	22.90	.30	4.28	2.69	27.40
1946	1.93	19.27	.29	4.14	2.24	23.61
1947	2.13	21.25	.30	4.19	2.44	25.60
1948	1.95	21.46	.33	4.43	2.29	25.99
NOVEMBER MAKE, 1936 to 1948, EXPRESSED AS INDEXES OF THE SAME MONTH IN 1939 & 1947 3/						
	1939	1947	1939	1947	1939	1947
	%	%	%	%	%	%
1936	88.0	90.0	108.7	168.3	93.6	105.7
1937	86.3	88.4	107.0	165.6	92.1	103.9
1938	95.4	97.6	104.0	161.0	97.8	110.3
1939	100.0	102.3	100.0	154.8	100.0	112.8
1940	97.9	100.2	96.2	148.9	97.5	110.0
1941	97.1	99.3	94.5	146.2	96.4	108.8
1942	110.2	112.7	89.7	138.8	104.7	118.2
1943	102.3	104.7	63.3	97.9	91.7	103.5
1944	107.2	109.7	62.4	96.6	95.1	107.4
1945	93.0	95.2	60.0	92.8	84.2	95.0
1946	89.8	91.9	61.6	95.4	82.3	92.9
1947	97.7	100.0	64.6	100.0	88.6	100.0
1948	106.6	109.1	72.4	112.0	97.1	109.5

1/ Data for November, 1948 are preliminary; revisions for October appear on Table 8.

2/ Includes Whey Butter amounting to 84,000 pounds in November, 1947 and 66,700 pounds in November, 1948.

3/ Note the base index in each column is shown as 100.

### THE BUTTER SITUATION

Production: Creamery butter production in November was almost  $16\frac{1}{2}$  million pounds, or more than  $1\frac{1}{4}$  million pounds above that of November, 1947. The estimated dairy butter make was approximately  $4\frac{1}{4}$  million pounds almost  $\frac{1}{2}$  million pounds more than that produced a year ago. The cumulative production of total butter (creamery, dairy and whey), for the eleven-month period amounted to 330 million pounds, representing a decrease of almost 5 million pounds as compared with the January to November period of the preceding year.

Total Supply: The total quantity of creamery, dairy and whey butter produced in November plus stocks at the beginning of November amounted to approximately  $76\frac{1}{2}$  million pounds. This represented a decline of about 14 million pounds in comparison with the total supply reported in November, 1947. Stock holdings of  $54\frac{1}{4}$  million pounds at November 1, fell to 47 million pounds at December 1, representing declines of approximately  $17\frac{1}{4}$  million and  $12\frac{1}{2}$  million pounds, respectively, from the same dates a year ago.

Domestic Disappearance: The domestic disappearance of all butter in the month of November was the lowest since April this year. The disappearance of  $29\frac{1}{4}$  million pounds may be compared with  $34\frac{1}{4}$  million pounds in the previous month, and  $30\frac{3}{4}$  million pounds in November, 1947. In pounds per capita, the domestic disappearance in November, 1948, was 2.29 pounds as against 2.67 pounds last month and 2.44 pounds in November, 1947. The cumulative disappearance of  $333\frac{3}{4}$  million pounds in the first eleven months of 1948 was  $11\frac{1}{2}$  million pounds greater than that of the January-November period of 1947. On a per capita basis it advanced from 25.60 pounds to 25.99 pounds.

### SUPPLIES OF OTHER FACTORY PRODUCTS

Cheddar Cheese Production: The cheddar cheese make of approximately  $2\frac{1}{2}$  million pounds was about  $1\frac{1}{4}$  million pounds less than that of the same month of 1947. It may be noted that the high-point in cheese production for the month of November was reached in 1942 when the output for that month was about  $9\frac{3}{4}$  million pounds. The total quantity produced during the January-November period of 1948 was approximately  $85\frac{1}{4}$  million pounds, a decrease of  $33\frac{1}{4}$  million pounds in comparison with that produced during the eleven-month period of 1947.

Concentrated Milk Products: The total quantity of concentrated milk products manufactured in November was  $23\frac{1}{2}$  million pounds. Compared with the same month of the previous year, the November production represented an increase of  $6\frac{1}{4}$  million pounds. The output of concentrated whole milk products was greater than that of the preceding November by  $4\frac{1}{2}$  million pounds. Evaporated milk, the most important item in the group, showed an increase of 4 million pounds. Milk by-products registered an increase of approximately  $1\frac{3}{4}$  million pounds as compared with November, 1947. The domestic disappearance of concentrated whole milk products per capita (see Table 3), was 1.30 pounds in November as against 1.36 pounds in the same month last year. The domestic disappearance of milk by-products in pounds per capita amounted to .28 and .43 pounds for November, 1947 and 1948, respectively.

Table 2. - THE CHEESE POSITION IN CANADA

November, and January - November, 1936 to 1948.

Year	Cheddar Cheese 1/		Other Cheese		Total Cheese 2/	
	November	Jan.-Nov.	November	Jan.-Nov.	November	Jan.-Nov.
PRODUCTION						
	'000 lb.	'000 lb.	'000 lb.	'000 lb.	'000 lb.	'000 lb.
1936	5,515	117,329	-	-	5,603	118,302
1937	4,468	129,490	-	-	4,551	130,409
1938	7,365	121,857	-	-	7,443	122,713
1939	5,232	122,900	-	-	5,303	123,685
1940	6,007	142,858	55	1,150	6,130	144,756
1941	7,743	144,987	74	1,549	7,884	147,268
1942	9,712	202,407	57	1,193	9,834	204,323
1943	9,163	159,823	122	1,592	9,349	162,112
1944	9,470	175,753	152	1,671	9,686	178,115
1945	7,238	183,792	160	1,818	7,458	186,293
1946	6,118	143,496	225	2,555	6,402	146,732
1947	3,760	118,426	141	2,869	3,960	121,976
1948	2,487	85,293	321	2,403	2,866	88,367
EXPORTS			IMPORTS		TOTAL SUPPLY	STOCKS, DEC.1
1936	15,140	75,720	271	1,139	38,918	22,771
1937	14,761	86,177	224	1,286	41,337	27,643
1938	12,536	73,415	190	1,239	51,900	32,294
1939	18,822	87,926	295	1,258	46,883	28,271
1940	9,290	102,661	39	947	39,031	27,525
1941	14,175	86,090	68	776	54,717	38,968
1942	12,734	129,074	40	816	77,914	60,122
1943	19,797	120,403	42	376	62,648	47,675
1944	13,891	115,995	36	543	67,131	48,447
1945	10,175	122,260	86	594	62,606	45,687
1946	8,533	100,182	135	1,233	39,575	25,939
1947	10,930	52,136	80	933	47,885	37,877
1948	6,787	37,730	-	*	-	37,495
NOVEMBER MAKE, 1936 to 1948, EXPRESSED AS INDEXES OF THE SAME MONTH IN 1939 & 1947.						
	1939	1947	1939	1947	1939	1947
	%	%	%	%	%	%
1936	105.4	146.7	-	-	105.7	141.5
1937	85.4	118.8	-	-	85.8	114.9
1938	140.8	195.9	-	-	140.4	188.0
1939	100.0	139.1	-	-	100.0	133.9
1940	114.8	159.8	-	39.0	115.6	154.8
1941	148.0	205.9	-	52.5	148.7	199.1
1942	185.6	258.3	-	40.4	185.4	248.3
1943	175.1	243.7	-	86.5	176.3	236.1
1944	181.0	251.8	-	107.8	182.7	244.6
1945	138.3	192.5	-	113.5	140.6	188.3
1946	116.9	162.7	-	159.6	120.7	161.7
1947	71.9	100.0	-	100.0	74.7	100.0
1948	47.5	66.1	-	227.7	54.0	72.4

1/ Includes other cheese produced in Quebec, 1936 to 1939.

2/ Farm-made cheese is included in data shown in this column. - Not available. \* Imports not available (See Trade Report No. 101 for data).



Ice Creams: The quantity of ice cream manufactured in November was nearly  $1\frac{1}{4}$  million gallons, or 46 thousand gallons more than that manufactured in the same month a year ago. However, for the eleven-month period of 1948, the output advanced to 24 million, an increase of more than  $1\frac{1}{2}$  million gallons over January-November, 1947.

#### MILK PRODUCTION AND UTILIZATION

Milk Production: The total milk production of Canada in the month of October is estimated at 1,325,891,000 pounds, representing a decrease of approximately 152 million pounds as compared with October, 1947

Fluid Sales: Sales of milk and cream (the latter expressed as milk), amounted 324,002,000 pounds in the month of October. Of this amount 84 per cent was sold in the form of milk and 16 per cent in the form of cream. The combined sales of milk and cream were approximately 12 million pounds less than those of the same month of the previous year. Milk sales declined 9 million pounds, and cream sales expressed as milk were 3 million pounds less than those of October, 1947.

Farm Income: Estimated cash income from the sales of dairy products amounted to \$32,380,000, in October, 1948, in comparison with \$30,283,000 in the same month of the previous year. Higher prices per unit were responsible for this advance, the weighted average being \$3.00 per hundred pounds of milk as against \$2.51 in October, 1947. This upward movement in prices applied to all products. Milk used in ice cream advanced 61 cents per hundred during the past twelve months. Fluid milk and fluid cream increased 57 cents and 58 cents, respectively, while cheese milk was 54 cents greater than that shown in the same month of the previous year. Income obtained from the sale of milk and butter-fat for the production of ice cream represented the equivalent of \$3.05 per hundred pounds, 16.1 per cent of which was delivered in the form of milk and 83.9 per cent in the form of cream. Butter-fat used in the production of creamery butter advanced from 62.0 to 72.8 cents, an increase of 10.8 cents per pound; and dairy butter selling at 68.4 cents per pound increased 7.7 cents in comparison with October, 1947. Milk used in concentration increased 61 cents over that of the corresponding month of last year. During the period, January to October, farm income from dairying advanced to \$340,945,000 as against \$282,430,000 in the same ten-month period of 1947.

#### PRODUCTION CONDITIONS ON FARMS

Temperatures during the month of November were exceptionally high and in some areas all-time mild weather records were established. At Nappan, Nova Scotia, the weather was 4 degrees warmer than the 39-year average at that station. Precipitation was quite adequate in the Eastern Provinces, but differing from last

Table 3. - CONCENTRATED MILK PRODUCTS AND ICE CREAM

Production and Domestic Disappearance in Canada.

November, and January - November, 1936 to 1948.

	Whole Milk Products		Milk by-Products		Ice Cream	
	November	Jan.-Nov.	November	Jan.-Nov.	November	Jan.-Nov.
PRODUCTION						
	'000 lb.	'000 lb.	'000 lb.	'000 lb.	'000 gal.	'000 gal.
1936	4,682	77,314	1,880	26,099	-	-
1937	7,374	102,516	1,363	27,348	-	-
1938	6,462	116,297	1,935	34,306	-	-
1939	10,118	123,435	2,030	32,900	360	8,692
1940	9,907	147,740	1,866	34,331	439	10,594
1941	12,292	190,030	1,720	34,907	566	13,601
1942	13,163	209,143	2,033	38,428	608	14,616
1943	11,288	211,474	1,487	37,112	792	16,561
1944	13,339	220,058	2,619	43,612	846	17,036
1945	11,897	234,012	2,602	51,206	762	15,788
1946	10,968	229,853	3,288	56,647	670	15,295
1947	13,479	248,267	3,664	74,487	1,167	22,429
1948	17,947	292,478	5,521	80,196	1,213	24,062
DOMESTIC DISAPPEARANCE IN POUNDS PER CAPITA						
					gal.	gal.
1936	.44	5.44	.17	2.34	-	-
1937	.56	6.73	.21	2.42	-	-
1938	.45	6.98	.22	2.37	-	-
1939	.44	8.99	.23	3.16	.03	.77
1940	1.01	8.80	.23	3.10	.04	.93
1941	.99	10.52	.20	3.27	.05	1.19
1942	1.19	13.08	.23	3.27	.05	1.28
1943	1.09	14.73	.24	3.25	.07	1.44
1944	1.07	12.53	.31	3.59	.07	1.47
1945	1.25	14.32	.38	3.81	.07	1.35
1946	.79	13.09	.30	4.14	.05	1.25
1947	1.36	15.56	.28	4.39	.09	1.78
1948	1.30	16.61	.43	3.68	.09	1.86
NOVEMBER MAKE, 1936 TO 1948, EXPRESSED AS INDEXES OF THE SAME MONTH IN 1939 & 1947 1/						
	1939	1947	1939	1947	1939	1947
	%	%	%	%	%	%
1936	46.3	34.7	92.6	51.3	-	-
1937	72.9	54.7	67.1	37.2	-	-
1938	63.9	47.9	95.3	52.8	-	-
1939	100.0	75.1	100.0	55.4	100.0	30.8
1940	97.9	73.5	91.9	50.9	121.9	37.6
1941	121.5	91.2	84.7	46.9	157.2	48.5
1942	130.1	97.7	100.1	55.5	168.9	52.1
1943	111.6	83.7	73.3	40.6	220.0	67.9
1944	131.8	99.0	129.0	71.5	235.0	72.5
1945	117.6	88.3	128.2	71.0	211.7	65.3
1946	108.4	81.4	162.0	89.7	186.1	57.4
1947	133.2	100.0	180.5	100.0	324.2	100.0
1948	177.4	133.1	272.0	150.7	336.9	103.9

1/ Note that base index in each column is shown as 100.

year there was very little snow. At Ottawa 4.7 inches of rain was recorded as compared with 2.31 inches in November, 1947. Some districts received a little snow about the middle of November, and a somewhat heavier snowfall was recorded at the end of the month, all of which disappeared. There was very little frost and farmers were able to continue plowing operations. In the Prairie Provinces a light blanket of snow covered the fields during the latter part of November accompanied by zero weather. Rainfall in British Columbia was exceptionally heavy and excessive moisture supplies were very much in evidence in the Fraser Valley and Coastal areas.

Heavy rains during the latter part of November arrested the prolonged period of drought in the Central Provinces. In the Prairie Provinces there was very little growth on fields due to continued dry weather conditions during the autumn months. Dairy cows were placed on full grain rations early in November, but were not permanently stabled until November 15th to 20th. In many sections of the Eastern Provinces young cattle were left out in the open until the end of the month. There would seem to be adequate feed supplies in all sections of Canada. A shortage of hay was indicated in some sections of the lower St. Lawrence, and in the flooded areas of British Columbia where there were insufficient quantities of home-grown feeds to meet requirements. However, hay was shipped into the Fraser Valley, and considerable quantities were supplied to farmers at approximately \$15 a ton. This relieved a feed shortage in that area, making it possible for farmers to maintain milk production at normal levels.

The dairy cow population has suffered to some extent from competition with beef production and grain growing in Western Canada. Alternative opportunities for increasing the cash income has also introduced some competition with dairying in other parts of the Dominion. Export shipments of dairy cattle amounted to 4,835 during the month of November as compared with 3,718 in the same month of the preceding year; and in the eleven-month period, January to November, exports of dairy cattle reached a total of 81,957 as compared with 42,689 in the same period of 1947. While economic factors would appear to contribute toward a reduced milk production in some parts of Western Canada, the stabilized character of the industry in the Eastern Provinces will tend to hold the November-December farm milk supply of the Dominion in a close relationship with that of the previous year.

#### UNITED KINGDOM CHEESE CONTRACT

It was announced by the Rt. Hon. Jas. G. Gardiner, Minister of Agriculture, on December 8, 1948, that the United Kingdom would take 50 million pounds of cheese from Canada during the fiscal year 1949-50, the same quantity as that contracted for in the previous year. The price will also remain the same, namely, 30 cents per pound F.O.B. factory.

Table 4 - CONCENTRATED WHOLE MILK PRODUCTS

Production in Canada, Exports and Imports of Principal Products  
November, and January - November, 1936 to 1948.

Year	Evaporated Whole Milk		Condensed Whole Milk		Whole Milk Powder	
	November	Jan.-Nov.	November	Jan.-Nov.	November	Jan.-Nov.
PRODUCTION						
	'000 lb.	'000 lb.	'000 lb.	'000 lb.	'000 lb.	'000 lb.
1936	3,838	66,611	637	7,426	149	2,637
1937	5,937	86,125	972	10,554	401	5,045
1938	5,349	100,423	678	8,736	365	6,167
1939	9,082	108,610	489	7,115	444	6,194
1940	8,044	127,290	1,429	13,220	354	6,164
1941	9,294	158,429	2,401	22,971	475	7,839
1942	10,737	176,214	1,747	21,481	573	10,616
1943	8,996	171,338	1,343	25,315	873	14,090
1944	10,529	175,094	1,803	28,811	821	15,117
1945	8,881	191,141	2,196	27,130	658	14,125
1946	7,596	183,841	2,056	29,139	1,185	14,458
1947	9,677	203,611	2,470	27,133	1,035	14,762
1948	13,797	237,528	2,680	32,595	984	18,346
EXPORTS						
1936	889	12,960	177	1,284	250	3,651
1937	4,065	22,602	234	3,743	349	2,920
1938	2,818	26,241	310	2,562	287	3,889
1939	3,708	23,315	107	1,055	581	5,847
1940	5,019	29,775	692	6,034	220	4,063
1941	5,354	40,233	2,773	15,976	364	4,811
1942	3,388	46,480	1,826	12,307	173	2,416
1943	1,560	26,051	1,657	16,610	50	1,298
1944	2,278	26,458	1,725	16,568	94	974
1945	5,684	59,086	1,691	17,238	764	4,453
1946	2,932	46,367	1,902	17,569	563	4,684
1947	3,132	39,914	2,212	16,963	905	4,942
1948	3,400	30,319	1,934	19,967	857	7,126
	TOTAL SUPPLY	STOCKS, DEC. 1	TOTAL SUPPLY	STOCKS, DEC. 1	IMPORTS	
1936	14,226	9,196	1,224	524	20	186
1937	19,472	10,245	1,498	555	45	865
1938	22,925	15,375	1,424	1,130	(1)	702
1939	16,599	8,797	1,355	537	3	198
1940	34,534	19,228	2,487	1,156	(1)	16
1941	44,307	27,174	3,833	1,983	1	334
1942	34,331	19,081	5,233	2,623	14	54
1943	26,683	14,584	3,908	1,685	1	159
1944	53,609	40,534	6,771	4,417	1	169
1945	46,716	28,222	4,721	3,038	3	23
1946	33,399	22,460	5,996	3,405	-	35
1947	30,795	11,775	6,137	3,014	-	7
1948	46,543	18,121(3)	6,949	3,521	(2)	(2)

Note - Supply data which appear in the first and third columns includes stocks at the beginning of the month, plus production and imports during the month. (1) Less than 500 lbs. (2) Not available on date of publication. (3) Stocks in the hands of wholesalers not included in data for December 1, 1948.

Table 5. - CONCENTRATED MILK BY-PRODUCTS

Production in Canada, Exports and Imports of Principal Products  
November, and January - November, 1936 to 1948.

Year	Skimmilk Powder		Condensed Skimmilk		Casein	
	November	Jan.-Nov.	November	Jan.-Nov.	November	Jan.-Nov.
PRODUCTION						
	'000 lb.	'000 lb.	'000 lb.	'000 lb.	'000 lb.	'000 lb.
1936	1,221	17,309	333	4,238	119	1,280
1937	934	17,396	212	4,681	36	1,526
1938	1,443	24,145	149	4,216	62	1,413
1939	1,417	23,895	298	2,963	57	1,629
1940	1,148	24,983	422	3,916	44	1,295
1941	1,072	25,049	322	4,184	53	1,114
1942	1,237	25,392	276	5,072	134	3,096
1943	641	21,551	133	3,862	99	3,053
1944	1,659	28,305	164	3,320	163	2,822
1945	1,592	35,642	186	3,362	135	3,612
1946	2,027	40,476	316	3,217	244	3,841
1947	2,166	52,499	191	4,037	519	6,546
1948	4,068	58,691	277	4,669	165	4,356
EXPORTS			IMPORTS(1)			
1936	83	1,217	-	-	38	139
1937	117	974	-	-	33	401
1938	85	992	-	-	39	225
1939	62	2,276	-	-	85	744
1940	159	916	-	-	197	2,014
1941	54	636	-	-	134	1,128
1942	36	385	-	-	14	1,850
1943	1	373	-	-	3	275
1944	-	22	-	-	1	477
1945	1,101	6,507	-	-	4	207
1946	693	4,371	-	-	23	135
1947	2,779	12,352	-	-	2	176
1948	1,387	26,471	-	-	(2)	(2)
DOMESTIC DISAPPEARANCE IN POUNDS PER CAPITA						
1936	.11	1.49	.03	.41	.01	.14
1937	.15	1.49	.03	.42	.01	.17
1938	.14	1.58	.03	.36	.01	.12
1939	.16	2.18	.03	.29	.02	.22
1940	.15	2.10	.04	.35	.02	.29
1941	.14	2.27	.02	.37	.01	.21
1942	.16	2.07	.02	.44	.02	.35
1943	.12	1.89	.02	.33	.03	.28
1944	.20	2.26	.02	.28	.04	.26
1945	.20	2.54	.02	.30	.07	.25
1946	.19	2.85	.03	.27	.03	.26
1947	.18	2.90	.03	.33	-	.27
1948	.32	2.29	.02	.34	.03	.12

(1) Condensed skimmilk is not separately listed in imports returns. Condensed milk designated as such shown in trade reports consists principally of condensed whole milk products.

(2) Not available at date of publication.

Table 6 - PRODUCTION OF DAIRY BUTTER AND WHEY BUTTER IN CANADA BY PROVINCES  
October, and January-October, 1947 and 1948.

Province	October				January-October			
	Dairy Butter		Whey Butter		Dairy Butter		Whey Butter	
	1947	1948	1947	1948	1947	1948	1947	1948
	'000 lb.	'000 lb.	lb.	lb.	'000 lb.	'000 lb.	lb.	lb.
CANADA .....	4,426	4,897	183,000	137,796	48,921	52,777	1,895,500	1,448,154
P.E.I. ....	38	50	-	-	464	529	-	-
Nova Scotia ....	198	276	-	-	2,298	2,485	-	-
New Brunswick ..	302	468	-	-	4,119	4,521	-	-
Quebec .....	568	850	4,000	2,053	6,959	8,155	162,000	71,812
Ontario .....	561	608	176,000	131,345	7,245	8,265	1,667,000	1,315,907
Manitoba .....	457	608	3,000	2,671	5,145	5,531	37,000	37,768
Saskatchewan ...	1,086	1,155	-	-	12,865	13,635	-	-
Alberta .....	1,068	757	x	x	8,359	8,278	x	x
British Columbia	148	125	x	x	1,467	1,378	x	x

x Production figures reported by less than three firms.  
The quantities produced in these provinces are included in the Canada totals.

Table 7. - SUPPLY AND DISAPPEARANCE OF CREAMERY BUTTER IN CANADA  
June to November, 1947 and 1948.

	June	July	August	September	October	November <sup>(1)</sup>
	'000 lb.	'000 lb.	'000 lb.	'000 lb.	'000 lb.	'000 lb.
1. Stocks, First of Month 1947	23,884	42,618	59,095	67,112	73,374	71,158
1948	11,726	30,712	44,844	51,067	53,653	53,910
2. Production during month 1947	43,127	42,466	36,500	33,527	27,058	15,056
1948	44,519	42,242	36,454	30,792	23,985	16,424
3. Imports during month 1947	-	-	-	-	(2)	-
1948	2	56	-	(2)	5,600(1)	1,480
4. Total Supply 1947	67,011	85,084	95,595	100,639	100,432	86,214
1948	56,247	73,010	81,298	81,859	83,238	71,814
5. Stocks, End of Month 1947	42,618	59,095	67,112	73,374	71,158	59,325
1948	30,712	44,844	51,067	53,653	53,910	46,759
6. Exports during month 1947	558	180	143	193	200	98
1948	80	55	14	76	63	73
7. Domestic Disappearance 1947	23,835	25,809	28,340	27,072	29,074	26,791
(Total supply less 5 and 6) 1948	25,455	28,111	30,217	28,130	29,265	24,982

(1) Preliminary.

(2) Less than 500 lb.

Table 8 - WEATHER REPORT FOR NOVEMBER, 1947 and 1948

Based on Data from 21 Stations in Canada.

Weather Station	Temperature		Rainfall	
	1947	1948	1947	1948
	Degrees	Degrees	Inches	Inches
Charlottetown	39	41	4.49	5.57
Nappan	36	40	2.99	4.14
Kentville	38	41	3.41	3.99
Fredericton	34	39	3.68	5.26
Ste. Anne	32	38	3.19	4.09
Lennoxville	31	41	3.40	5.76
L'Assomption	32	41	3.96	4.83
Ottawa	33	42	2.31	4.69
Harrow	39	41	1.90	3.97
Delhi	36	44	1.66	4.18
London	22	27	1.49	2.19
Brandon	20	24	0.92	1.07
Indian Head	16	23	2.41	1.61
Swift Current	21	27	1.19	0.64
Scott	17	22	1.02	0.48
Lethbridge	26	33	1.01	0.60
Manyberries	22	30	0.30	0.80
Beaverlodge	25	24	0.83	0.46
Agassiz	43	41	5.50	12.85
Summerland	37	37	0.73	0.48
Sidney	42	41	2.47	6.96

Source: Dominion Experimental Farms Meteorological Service.

Table 9 - MILK PRODUCTION AND UTILIZATION IN CANADA, BY PROVINCES,

October 1946, 1947 and 1948

Section A

	Total Milk Production	Factory Production				Farm Production		
		Creamery Butter	Factory Cheese	Conc. Milk	Ice Cream	Dairy Butter	Farm Cheese	
	'000 lb.	'000 lb.	'000 lb.	'000 lb.	'000 lb.	'000 lb.	'000 lb.	
CANADA	1946	1,380,154	518,342	153,973	49,506	15,248	100,257	662
	1947	1,478,135	633,970	119,850	60,733	25,263	103,701	662
	1948	1,325,891	561,969	74,475	70,598	20,620	114,737	652
P.E.I.	1946	14,112	7,779	791	-	86	914	1
	1947	13,948	7,732	724	-	114	890	1
	1948	18,117	11,574	903	-	143	1,172	1
N. S.	1946	35,592	13,238	-	1,021	972	4,686	27
	1947	34,187	11,973	-	429	1,515	4,639	27
	1948	35,428	11,692	-	432	1,872	6,467	26
N. B.	1946	33,635	11,903	913	-	443	7,216	4
	1947	34,840	13,402	524	-	757	7,076	4
	1948	37,506	12,980	657	-	814	10,965	4
Que.	1946	415,310	197,374	42,588	13,071	2,729	13,870	28
	1947	450,795	259,839	15,251	16,429	4,616	13,308	28
	1948	417,340	233,527	11,256	24,375	3,272	19,915	27
Ont.	1946	464,050	128,584	104,215	29,665	7,174	11,738	145
	1947	501,420	157,989	97,798	37,665	11,189	13,144	145
	1948	417,535	130,646	58,272	37,647	7,774	14,245	143
Man.	1946	94,274	44,165	2,598	-	943	11,036	101
	1947	98,055	48,430	2,668	-	1,400	10,708	101
	1948	89,466	42,151	1,270	-	1,572	14,245	99
Sask.	1946	138,908	60,192	356	-	843	23,571	122
	1947	150,201	71,625	390	-	1,400	25,445	122
	1948	132,099	57,661	167	-	1,315	27,062	121
Alta.	1946	134,961	48,219	2,000	1,705	800	24,063	200
	1947	143,722	56,302	2,161	2,015	1,786	25,023	200
	1948	125,688	54,967	1,671	2,114	1,800	17,737	198
B.C.	1946	49,312	6,888	512	4,044	1,258	3,163	34
	1947	50,967	6,678	334	4,195	2,486	3,468	34
	1948	52,712	6,771	279	6,030	2,058	2,929	33



Table 9 - MILK PRODUCTION AND UTILIZATION IN CANADA, BY PROVINCES,

October 1946, 1947 and 1948

Section B

	Milk Otherwise Used				Recapitulation		
	Fluid Milk	Fluid (1) Cream	Farm-Home Consumed	Fed to Livestock	Factory Production	Farm Production	Otherwise Used
	'000 lb.	'000 lb.	'000 lb.	'000 lb.	'000 lb.	'000 lb.	'000 lb.
CANADA 1946	289,931	46,598	152,516	53,121	737,069	100,919	542,166
1947	282,016	54,409	145,362	52,169	839,816	104,363	533,956
1948	272,971	51,031	119,463	39,375	727,662	115,389	482,840
P.E.I. 1946	1,526	97	2,406	512	8,656	915	4,541
1947	1,450	157	2,358	522	8,570	891	4,487
1948	1,367	147	2,310	500	12,620	1,173	4,324
N. S. 1946	10,210	640	4,054	744	15,231	4,713	15,648
1947	9,972	986	3,932	714	13,917	4,666	15,604
1948	9,583	906	3,750	700	13,996	6,493	14,939
N.B. 1946	6,061	549	5,694	852	13,259	7,220	13,156
1947	5,933	809	5,466	869	14,683	7,080	13,077
1948	5,571	637	5,078	800	14,451	10,969	12,086
Que. 1946	90,135	16,447	34,658	5,410	255,762	13,898	145,650
1947	87,122	16,348	32,579	5,275	296,135	13,336	141,324
1948	82,592	14,615	22,761	5,000	272,430	19,942	124,968
Ont. 1946	115,478	10,659	43,710	12,682	269,638	11,883	182,529
1947	111,385	16,644	42,399	13,062	304,641	13,289	183,490
1948	107,709	15,762	36,062	9,275	234,339	14,388	168,808
Man. 1946	12,568	3,809	13,416	5,638	47,706	11,137	35,431
1947	12,405	3,939	12,879	5,525	52,498	10,809	34,748
1948	12,070	3,911	10,548	3,600	44,993	14,344	30,129
Sask. 1946	12,931	2,955	26,225	11,713	61,391	23,693	53,824
1947	12,405	3,560	24,127	11,127	73,415	25,567	51,219
1948	12,355	3,432	21,986	8,000	59,143	27,183	45,773
Alta. 1946	19,145	5,331	19,305	14,193	52,724	24,263	57,974
1947	18,281	5,461	18,726	13,767	62,264	25,223	56,235
1948	18,500	5,259	13,442	10,000	60,552	17,935	47,201
B.C. 1946	21,877	7,111	3,048	1,377	12,702	3,197	33,413
1947	23,063	6,505	2,896	1,308	13,693	3,502	33,772
1948	23,224	6,362	3,526	1,500	15,138	2,962	34,612

(1) Cream Expressed as Milk.

Table 10 - UTILIZATION OF MILK IN PERCENTAGES OF TOTAL MILK PRODUCTION

In Canada, by Provinces, October 1947 and 1948.

Province	Sold for Distribution and Used in Manufacture				Used on Farms	
	Creamery Butter	Fluid Sales	Factory Cheese	Conc. Milk and Ice Cream	Dairy Butter	Other Purposes
	%	%	%	%	%	%
CANADA 1947	42.9	22.8	8.1	5.8	7.0	13.4
1948	42.4	24.4	5.6	6.9	8.7	12.0
P.E.I. 1947	55.4	11.5	5.2	0.8	6.4	20.7
1948	63.9	8.3	5.0	0.8	6.5	15.5
N. S. 1947	35.0	32.0	-	5.7	13.6	13.7
1948	33.0	29.6	-	6.5	18.3	12.6
N. B. 1947	38.5	19.3	1.5	2.2	20.3	18.2
1948	34.6	16.5	1.8	2.2	29.2	15.7
Que. 1947	57.6	23.0	3.4	4.7	2.9	8.4
1948	55.9	23.3	2.7	6.6	4.8	6.7
Ont. 1947	31.5	25.5	19.5	9.8	2.6	11.1
1948	31.3	29.5	14.0	10.9	3.4	10.9
Man. 1947	49.4	16.7	2.7	1.4	10.9	18.9
1948	47.1	17.9	1.4	1.8	15.9	15.9
Sask. 1947	47.7	10.6	0.3	0.9	16.9	23.6
1948	43.7	11.9	0.1	1.0	20.5	22.8
Alta. 1947	39.2	16.5	1.5	2.7	17.4	22.7
1948	43.8	18.9	1.3	3.1	14.1	18.8
B. C. 1947	13.1	58.0	0.7	13.1	6.8	8.3
1948	12.9	56.1	0.5	15.3	5.6	9.6

Table 11 - FARM INCOME FROM DAIRYING AND PRICE AVERAGES PER HUNDRED POUNDS OF MILK  
By Provinces and By Products, October 1947 and 1948

	Income		Price		Income		Price	
	1947	1948	1947	1948	1947	1948	1947	1948
	Total Income				(1) Fluid Sales (Milk only)			
	\$ '000	\$ '000	\$	\$	\$ '000	\$ '000	\$	\$
Canada	30,283	32,380	2.51	3.00	9,458	10,713	3.35	3.92
P. E. I.	237	391	2.31	2.75	43	47	3.00	3.41
N. S.	719	886	2.65	3.11	329	368	3.30	3.84
N. B.	602	744	2.59	3.04	206	228	3.48	4.10
Que.	10,142	11,319	2.47	2.98	2,927	3,221	3.36	3.90
Ont.	11,251	11,129	2.56	3.09	3,731	4,190	3.35	3.89
Man.	1,640	1,696	2.33	2.72	366	456	2.95	3.78
Sask.	2,114	2,068	2.25	2.66	389	446	3.14	3.61
Alta.	2,108	2,352	2.34	2.74	567	731	3.10	3.95
B. C.	1,470	1,795	3.33	3.94	900	1,026	3.90	4.42
	(2) Fluid Cream				(3) Milk for Concentration			
Canada	1,225	1,446	2.25	2.83	1,670	2,369	2.75	3.36
P.E.I.	4	4	2.48	2.69	-	-	-	-
N. S.	25	26	2.55	2.86	10	14	2.28	3.19
N. B.	20	19	2.44	3.04	-	-	-	-
Que.	347	405	2.12	2.77	462	853	2.81	3.50
Ont.	380	451	2.28	2.86	976	1,205	2.59	3.20
Man.	95	93	2.42	2.38	-	-	-	-
Sask.	86	87	2.42	2.52	-	-	-	-
Alta.	112	126	2.05	2.39	52	62	2.59	2.95
B.C.	156	235	2.40	3.70	170	235	4.04	3.90
	(4) Cheese Milk				(5) Ice Cream Milk			
Canada	2,772	2,124	2.31	2.85	616	629	2.44	3.05
P.E.I.	16	24	2.20	2.66	3	4	2.29	2.84
N. S.	-	-	-	-	37	61	2.47	3.27
N. B.	13	18	2.51	2.77	18	26	2.42	3.23
Que.	317	301	2.08	2.67	117	105	2.54	3.21
Ont.	2,282	1,682	2.33	2.89	269	234	2.40	3.01
Man.	70	40	2.61	3.14	32	40	2.27	2.55
Sask.	9	5	2.32	2.72	32	40	2.27	2.99
Alta.	55	46	2.53	2.785	44	51	2.46	2.82
B.C.	10	8	2.93	2.73	64	68	2.55	3.30
	(6) Creamery Butter-Fat				(7) Dairy Butter			
	\$ '000	\$ '000	¢	¢	\$ '000	\$ '000	¢	¢
Canada	13,759	14,319	62.0	72.8	783	780	60.7	68.4
P.E.I.	169	309	62.4	76.4	2	3	61.0	68.0
N. S.	258	299	61.5	73.0	60	118	63.0	69.0
N. B.	296	338	63.0	74.5	49	115	65.0	70.0
Que.	5,747	6,130	63.2	75.0	225	304	60.0	70.0
Ont.	3,439	3,304	62.2	72.25	174	63	66.0	69.0
Man.	1,036	1,028	61.1	69.7	41	39	60.0	65.0
Sask.	1,487	1,415	59.3	70.1	111	75	57.0	65.0
Alta.	1,181	1,298	59.95	67.45	97	38	57.0	63.0
B. C.	146	198	62.6	83.6	24	25	60.0	65.0

STATISTICS CANADA LIBRARY  
BIBLIOTHEQUE STATISTIQUE CANADA



1010779675

