

23-001

FEB 2 1949

c.2

Published by Authority of the Rt. Hon. C. D. Howe, M.P., Minister of Trade and Commerce

DOMINION BUREAU OF STATISTICS

MONTHLY DAIRY REVIEW OF CANADA 1948

STATISTICS STATISTIQUE CANADA CANADA

APR 14 1949

LIBRARY BIBLIOTHÈQUE

Dominion Statistician:
Director, Agriculture Division
In Charge of Dairying Statistics

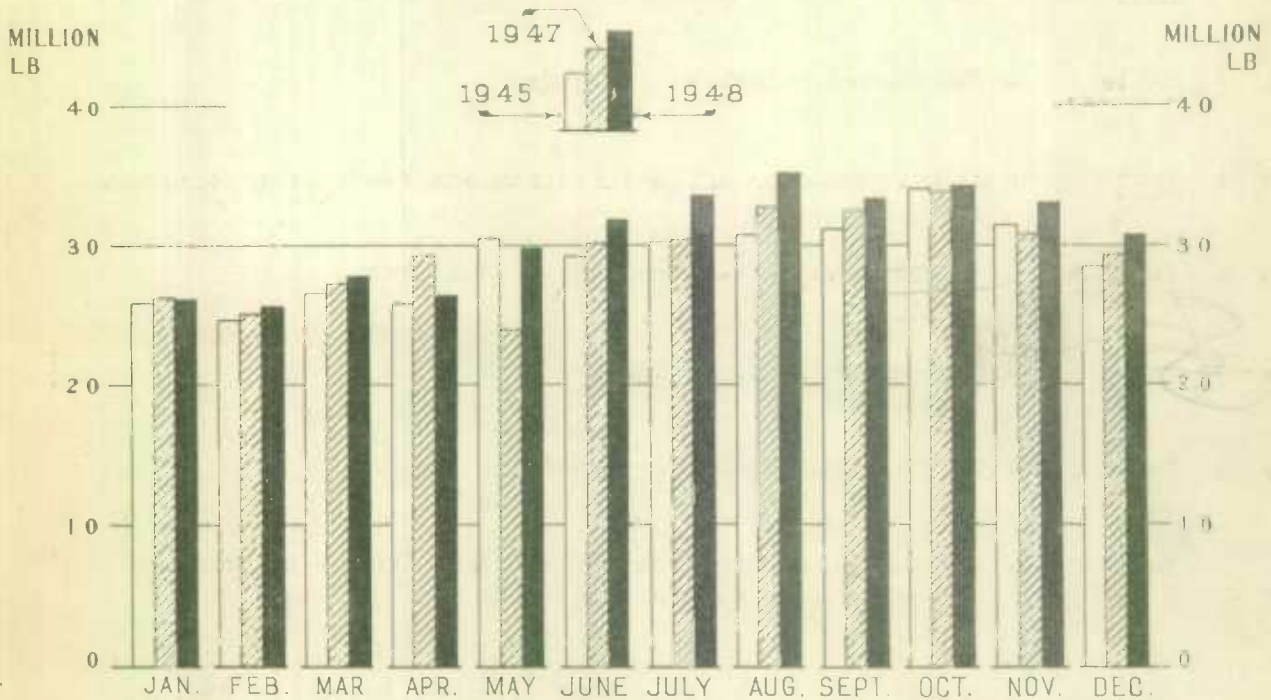
Herbert Marshall
C. V. Parker
P. H. Ferguson

Volume No. IX, Report No. 12.

(DECEMBER)

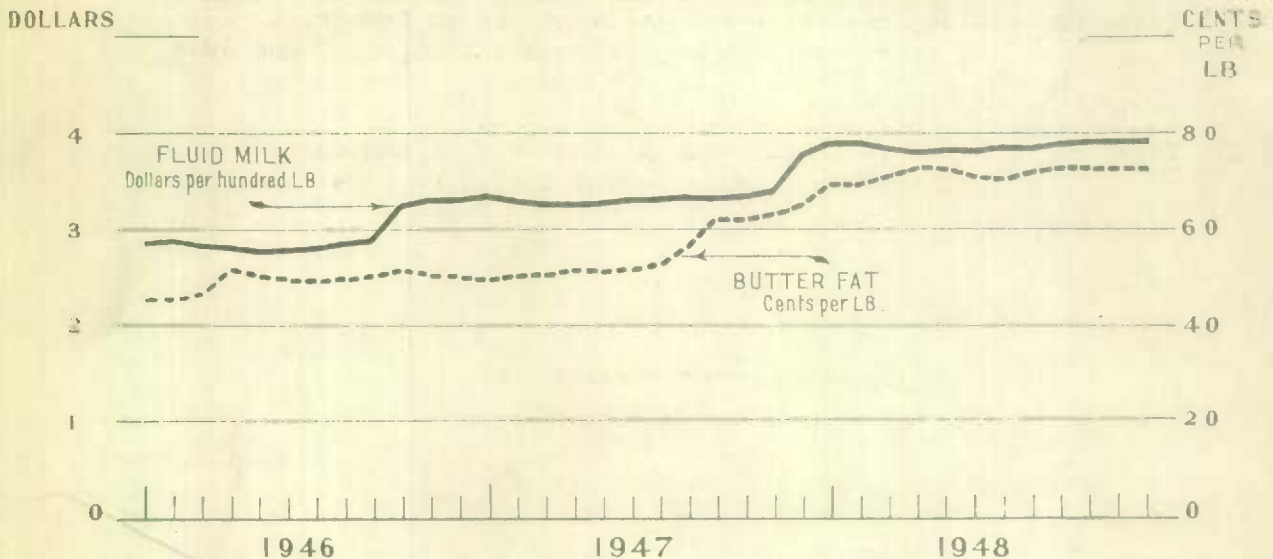
Published January 31, 1949

DOMESTIC DISAPPEARANCE OF BUTTER*



* Includes Creamery, Dairy and whey Butter

FARM PRICES OF FLUID MILK AND BUTTER FAT



Price: \$1.00 a year.

C O N T E N T S

- Page 1 Summary - The Dairy Position in Brief.
- Page 2 Table 1 - The Butter Position in Canada.
- Page 3 Text - The Butter Situation and Supplies of Other Factory Products.
- Page 4 Table 2 - The Cheese Position in Canada.
- Page 5 Text - Milk Production and Utilization and Production Conditions on Farms.
- Page 6 Table 3 - Concentrated Milk Products and Ice Cream.
- Page 7 Table 4 -- Concentrated Whole Milk Products.
- Page 8 Table 5 - Concentrated Milk By-Products.
- Page 9 Table 6 - Production of Dairy Butter and Whey Butter in Canada, by Provinces, November and December, 1947-1948.
- Table 7 - Supply and Disappearance of Creamery Butter in Canada, July to December, 1947 and 1948.
- Page 10 Table 8A - Milk Production and Utilization, in Canada, by Provinces, January-December, 1946, 1947 and 1948.
- Page 11 Table 8B - Milk Production and Utilization, in Canada by Provinces, January-December, 1946, 1947 and 1948.

THE DAIRY POSITION IN BRIEF

Domestic disappearance of total butter, January-December, 1948, amounted to 368 $\frac{1}{4}$ million pounds, 4 $\frac{3}{4}$ per cent greater than that of 1947.

Creamery butter production as previously published, amounted to 283 $\frac{3}{4}$ million pounds during the period January-December, 2 $\frac{3}{4}$ per cent less than the quantity produced in 1947. The December output was 16 $\frac{1}{2}$ per cent more than that recorded in the same month of the previous year.

Dairy butter production for the twelve-month period of 1948 amounted to 62 $\frac{3}{4}$ million pounds, a gain of approximately 11 $\frac{3}{4}$ per cent over that of 1947.

Whey butter production reported by manufacturers in 1948, was 1 $\frac{1}{2}$ million pounds, representing a reduction of 23 per cent in comparison with 1947.

Stock holdings of butter (creamery, dairy and whey) on January 1 were about 20 $\frac{1}{2}$ per cent less than those of December 1, and fell 15 $\frac{1}{4}$ per cent below those of the same date last year. Total supply in December (represented by stocks at the beginning of the month, plus total butter produced during the month), was 15 per cent below November, and 7 $\frac{1}{4}$ per cent less than December, 1947.

Butter prices at Montreal based on quotations of the Canadian Commodity Exchange for first grade solids, averaged 68 $\frac{1}{2}$ cents per pound in December as against 66 $\frac{1}{8}$ cents in the same month last year.

Cheese prices at Montreal based on quotations for Western Cheese sold for domestic use, averaged 33 $\frac{1}{2}$ cents per pound as compared with 26 cents per pound in December, 1947.

The total milk production of Canada during the twelve-month period of 1948 amounted to approximately 16.6 billion pounds, a decline of 3 $\frac{1}{2}$ per cent in comparison with the previous year. Six of the Provinces contributed to this decline, while increases occurred in Prince Edward Island, New Brunswick and British Columbia.

Fluid Sales of milk and cream in 1948, amounted to approximately 4 billion pounds, representing a reduction of 3 $\frac{3}{4}$ per cent from 1947. Fluid milk sales in 1948, declined approximately 3 $\frac{1}{2}$ per cent, while fluid cream on a milk basis decreased 5 per cent.

Milk used in dairy factory production during the twelve-month period of 1948 amounted to approximately 8 $\frac{3}{4}$ billion pounds, a decline of nearly 3 $\frac{1}{2}$ per cent from the previous year.

Production conditions on farms during both November and December were generally favourable. Exceptionally mild weather prevailed in all Provinces and there were no heavy falls of snow until the middle of December. These conditions favoured the regular deliveries of milk and cream to factories. Farmers are well stocked with feed supplies, a situation which helped to maintain milk production at a reasonably high level.

Table 1. - THE BUTTER POSITION IN CANADA

December, and January - December, 1936 to 1948.

Year	Creamery Butter		Dairy Butter 1/		Total Butter 2/	
	December	Jan.-Dec.	December	Jan.-Dec.	December	Jan.-Dec.
PRODUCTION						
	'000 lb.	'000 lb.	'000 lb.	'000 lb.	'000 lb.	'000 lb.
1936	10,789	250,932	5,503	95,405	16,322	347,827
1937	9,847	247,057	5,408	93,724	15,293	342,591
1938	11,259	267,347	5,258	91,010	16,555	360,168
1939	11,906	267,613	5,044	87,459	16,987	356,878
1940	12,330	264,724	4,851	84,256	17,223	350,986
1941	12,095	285,848	4,764	82,796	16,903	370,795
1942	14,687	284,591	4,522	78,525	19,265	365,798
1943	12,365	311,709	3,176	55,407	15,594	369,316
1944	12,385	298,777	3,423	54,580	15,875	356,013
1945	10,591	293,811	3,327	53,283	13,960	349,899
1946	10,374	271,491	3,419	54,225	13,849	328,194
1947	10,254	290,841	3,586	56,295	13,876	349,145
1948	11,936	283,774	5,095	62,843	17,062	348,164
DOMESTIC DISAPPEARANCE IN POUNDS PER CAPITA						
1936	1.73	22.09	.50	8.71	2.23	30.94
1937	1.79	22.73	.49	8.50	2.29	31.39
1938	1.79	22.64	.47	8.13	2.26	30.93
1939	1.78	22.92	.45	7.79	2.23	30.87
1940	1.82	23.83	.43	7.39	2.26	31.40
1941	1.93	24.04	.42	7.26	2.36	31.49
1942	2.08	26.60	.40	6.86	2.49	33.69
1943	2.18	24.24	.28	4.82	2.47	29.25
1944	2.04	25.86	.30	4.71	2.35	30.81
1945	2.15	25.05	.28	4.56	2.44	29.84
1946	1.86	21.13	.28	4.42	2.14	25.75
1947	2.04	23.29	.29	4.48	2.33	27.93
1948	1.99	23.68	.40	4.89	2.40	28.68
DECEMBER MAKE, 1936 to 1948, EXPRESSED AS INDEXES OF THE SAME MONTH IN 1939 & 1947 3/						
	1939	1947	1939	1947	1939	1947
	%	%	%	%	%	%
1936	90.6	105.2	109.1	153.5	96.1	117.6
1937	82.7	96.0	107.2	150.8	90.0	110.2
1938	94.6	109.8	104.2	146.6	97.5	119.3
1939	100.0	116.1	100.0	140.7	100.0	122.4
1940	103.6	120.2	96.2	135.3	101.4	124.1
1941	101.6	118.0	94.4	132.8	99.5	121.8
1942	123.4	143.2	89.7	126.1	113.4	138.8
1943	103.9	120.6	63.0	88.6	91.8	112.4
1944	104.0	120.8	67.9	95.5	93.5	114.4
1945	89.0	103.3	66.0	92.8	82.2	100.6
1946	87.1	101.2	67.8	95.3	81.5	99.8
1947	86.1	100.0	71.1	100.0	81.7	100.0
1948	100.3	116.4	101.0	142.1	100.4	123.0

1/ Data for December, 1948 are preliminary; revision for November appear on Table 6.

2/ Includes Whey Butter amounting to 35,500 pounds in December, 1947 and 31,000 pounds in December, 1948.

3/ Note the base index in each column is shown as 100.

THE BUTTER SITUATION

Production: Total butter production amounted to 348 million pounds in 1948. This includes 283 $\frac{3}{4}$ million pounds of creamery butter, 62 $\frac{3}{4}$ million pounds of dairy butter and 1 $\frac{1}{2}$ million pounds of whey butter. The total represented a reduction of approximately 1 million pounds from the quantity manufactured in factories and on farms in 1947. The total production of butter (creamery, dairy and whey) for the month of December was 17 million pounds, 3 $\frac{1}{4}$ million pounds more than that produced in the same month of the preceding year.

Total Supply: The total quantity of creamery, dairy and whey butter produced in December plus stocks at the beginning of December amounted to approximately 68 $\frac{1}{4}$ million pounds. This figure was about 5 $\frac{1}{4}$ million pounds less than the total supply reported in December, 1947. Stock holdings of 47 million pounds at December 1, fell to 37 $\frac{1}{4}$ million pounds at January 1. Comparative data for the same dates a year ago were higher by approximately 12 $\frac{1}{2}$ million pounds and 6 $\frac{7}{8}$ million million pounds, respectively.

Domestic Disappearance: The domestic disappearance of all butter for the calendar year 1948, amounted to 368 $\frac{1}{4}$ million pounds, 16 $\frac{3}{4}$ million pounds greater than that of 1947. On a per capita basis it advanced from 27.93 pounds to 28.68 pounds. The disappearance of all butter in the month of December was the lowest since May 1948. The disappearance of 30 $\frac{3}{4}$ million pounds may be compared with 33 million pounds in the previous month, and 29 $\frac{1}{4}$ million pounds in December, 1947. In pounds per capita, the domestic disappearance in December, 1948, was 2.40 pounds as against 2.58 pounds last month and 2.33 pounds in December, 1947.

SUPPLIES OF OTHER FACTORY PRODUCTS

Cheddar Cheese Production: The total quantity of cheddar cheese manufactured during 1948 was approximately 86 $\frac{1}{2}$ million pounds, a decrease of 33 $\frac{1}{4}$ million pounds in comparison with that produced during 1947. The cheddar cheese output for December of approximately 1 $\frac{1}{4}$ million pounds was 94 thousand pounds less than that of the same month of 1947. It may be noted that the high-point in cheese production for the month of December was reached in 1941 when the output for that month was about 6 $\frac{1}{4}$ million pounds.

Concentrated Milk Products: The total quantity of concentrated milk products manufactured in 1948, amounted to 392 million pounds, an increase of 55 million pounds as compared with 1947. The production of whole milk products and milk by-products for 1948 amounted to 307 million pounds and 85 million pounds, respectively; the former representing an increase of 47 million pounds and the latter 8 million pounds. The output of concentrated milk products manufactured in December was 19 $\frac{3}{4}$ million pounds representing an increase of 5 $\frac{1}{4}$ million pounds from the same month of the previous year. The quantity of concentrated whole milk products manufactured in December was 3 million pounds greater than that of the preceding December. Evaporated milk, the most important item in the group, showed an increase of 3 $\frac{1}{4}$ million pounds. Production of milk by-products increased approximately 2 $\frac{1}{4}$ million pounds as compared with December, 1947. The domestic disappearance of concentrated whole milk products per capita (see Table 3), was 1.07 pounds in December as against .95 pounds in the same month last year. The domestic disappearance of milk by-products in pounds per capita amounted to .17 and .13 pounds for December, 1947 and 1948, respectively.

Ice Cream: The quantity of ice cream manufactured in the twelve-month period of 1948 amounted to 25 $\frac{1}{4}$ million gallons, an increase of almost 1 $\frac{3}{4}$ million gallons over 1947. The December output of ice cream was a little over 1 million

Table 2. - THE CHEESE POSITION IN CANADA

December, and January - December, 1936 to 1948.

Year	Cheddar Cheese 1/		Other Cheese		Total Cheese 2/	
	December	Jan.-Dec.	December	Jan.-Dec.	December	Jan.-Dec.
PRODUCTION						
	'000 lb.	'000 lb.	'000 lb.	'000 lb.	'000 lb.	'000 lb.
1936	1,794	119,123	-	-	1,883	120,185
1937	1,136	130,626	-	-	1,219	131,628
1938	2,114	123,971	-	-	2,192	124,905
1939	2,575	125,475	-	-	2,647	126,332
1940	1,827	144,685	22	1,172	1,917	146,673
1941	6,225	151,212	29	1,578	6,321	153,589
1942	3,808	206,215	23	1,216	3,896	208,219
1943	4,730	164,553	130	1,722	4,923	167,035
1944	4,328	180,081	145	1,816	4,535	182,650
1945	2,965	186,757	154	1,972	3,180	189,473
1946	2,603	146,099	230	2,785	2,892	149,624
1947	1,277	119,703	144	3,013	1,480	123,456
1948	1,183	86,476	359	2,762	1,601	89,968
EXPORTS			IMPORTS		TOTAL SUPPLY STOCKS, JAN. 1	
1936	6,170	81,890	101	1,240	24,755	24,026
1937	2,778	88,955	124	1,410	28,986	28,559
1938	7,574	80,989	148	1,387	34,634	31,500
1939	3,019	90,945	139	1,397	31,057	25,812
1940	3,970	106,631	23	970	29,465	24,663
1941	6,241	92,331	85	861	45,374	34,728
1942	12,430	141,504	42	858	64,060	56,478
1943	9,338	129,741	159	535	52,757	43,510
1944	15,434	131,429	25	568	53,007	40,308
1945	13,149	135,409	55	649	48,922	33,742
1946	6,313	106,495	247	1,480	29,078	25,678
1947	3,395	55,531	83	1,016	39,440	30,634
1948	2,095	39,825	=	=	-	34,566
DECEMBER MAKE, 1936 to 1948, EXPRESSED AS INDEXES OF THE SAME MONTH IN 1939 & 1947.						
	1939	1947	1939	1947	1939	1947
	%	%	%	%	%	%
1936	69.7	140.5	-	-	71.1	127.2
1937	44.1	89.0	-	-	46.1	82.4
1938	82.1	165.5	-	-	82.8	148.1
1939	100.0	201.6	-	-	100.0	178.9
1940	71.0	143.1	-	15.3	72.4	129.5
1941	241.7	487.5	-	20.1	238.8	427.1
1942	147.9	298.2	-	16.0	147.2	263.2
1943	183.7	370.4	-	90.3	186.0	332.6
1944	168.1	338.9	-	100.7	171.3	306.4
1945	115.1	232.2	-	106.9	120.1	214.9
1946	101.1	203.8	-	159.7	109.3	195.4
1947	49.6	100.0	-	100.0	55.9	100.0
1948	45.9	92.6	-	249.3	60.5	108.2

1/ Includes other cheese produced in Quebec, 1936 to 1939.

2/ Farm-made cheese is included in data shown in this column. - Not available. = Imports not available (See Trade Report No. 101 for data).

gallons, or 38 thousand gallons more than that manufactured in the same month a year ago.

MILK PRODUCTION AND UTILIZATION

Milk Production: Total milk production in Canada for the calendar year 1948 is estimated at 16,622,000,000 pounds, a decrease of 592 million pounds from 1947. The estimated output for November and December amounted to 2,091 million pounds, representing a decrease of 87 million pounds from the same period in 1947.

Fluid Sales: Sales of milk and cream (the latter expressed as milk), amounted to 4,008,697,000 pounds during the period January to December, 1948, a decline of 154 million pounds from 1947. Fluid milk decreased approximately 113½ million pounds while fluid cream on a milk basis decreased 35½ million pounds. In November and December sales of milk and cream amounted to 677 million pounds for the two months, 84.2 per cent of which was sold in the form of milk and 15.8 per cent in the form of cream. The combined sales of milk and cream were approximately 6 million pounds less than those of the same months of the previous year. Milk sales declined 1½ million pounds, and cream sales expressed as milk, were 4½ million pounds less than those of November-December, 1947.

PRODUCTION CONDITIONS ON FARMS

December was a comparatively mild month, especially in Eastern Canada. In the Eastern Provinces there was practically no snow until the 15th of December while in Western Canada the first lasting snowfall came about the middle of November. Roads were kept open in the Eastern Provinces throughout the month, but traffic was interrupted to some extent in the Prairie Provinces with heavy snowfalls during the last half of December. Heavy precipitation was recorded in British Columbia, and the December snowfall in the Okanagon Valley reached a total of twenty inches.

Farmers have an abundance of hay, and ample stocks of grain, ensilage and roots. Dealers are meeting the demand for concentrated feeds with the exception of oil cake and meal which appear to be in short supply.

Owing to unsatisfactory pasture conditions in the Eastern Provinces during the early part of the fall, cattle did not go into winter quarters in as favourable a condition as might be expected. In order to maintain the milk flow supplementary feeding became necessary early in October. However, milch cows were kept in the open until about the middle of November and in many cases ranged on the open fields to a limited extent up to the middle of December. In Western Canada, cows were stabled by the first of November. Exports of dairy cattle for the month of December were 4,662 head and for the twelve-month period of 1948 were 86,552 as compared with 46,585 in the previous year.

Note: Preliminary Data for Twelve-Month Period of 1948 (Subject to Revision)

The statistics given in this issue of the Review are of a preliminary character, being unrevised data for 1947, and preliminary statistics shown by months in the current issues of the Review for 1948. These data are being revised for both years and will be published in the SUPPLEMENT TO THE DAIRY REVIEW to be released on or about February 25th, 1949.

Table 3. - CONCENTRATED MILK PRODUCTS AND ICE CREAM

Production and Domestic Disappearance in Canada.
December, and January - December, 1936 to 1948.

	Whole Milk Products		Milk by-Products		Ice Cream	
	December	Jan.-Dec.	December	Jan.-Dec.	December	Jan.-Dec.
PRODUCTION						
	'000 lb.	'000 lb.	'000 lb.	'000 lb.	'000 gal.	'000 gal.
1936	5,145	82,459	1,787	27,886	-	-
1937	6,488	109,004	1,750	29,098	-	-
1938	6,247	122,544	2,051	36,357	-	-
1939	9,173	132,608	2,096	34,996	361	9,053
1940	10,117	157,857	2,025	36,356	445	11,039
1941	9,663	199,693	2,197	37,104	570	14,171
1942	11,687	220,830	2,020	40,448	610	15,226
1943	9,628	221,102	1,553	38,665	682	17,243
1944	12,399	232,457	2,390	46,002	631	17,666
1945	11,693	245,705	2,355	53,561	564	16,352
1946	10,956	240,809	3,343	59,990	534	15,829
1947	11,518	259,785	2,976	77,463	1,081	23,510
1948	14,452	306,930	5,233	85,429	1,119	25,181

DOMESTIC DISAPPEARANCE IN POUNDS PER CAPITA

					gal.	gal.
1936	.26	5.70	.19	2.53	-	-
1937	.30	7.03	.14	2.56	-	-
1938	.48	7.46	.20	2.57	-	-
1939	.29	9.28	.20	3.36	.03	.80
1940	1.03	9.83	.23	3.33	.04	.97
1941	.07	10.75	.21	3.48	.05	1.24
1942	.93	14.01	.27	3.54	.05	1.33
1943	.82	15.55	.19	3.44	.06	1.50
1944	.92	13.45	.19	3.78	.06	1.53
1945	.26	14.58	.24	4.05	.05	1.40
1946	.82	13.91	.14	4.28	.04	1.29
1947	.95	16.51	.17	4.56	.09	1.87
1948	1.07	17.65	.13	3.82	.09	1.95

NOVEMBER MAKE, 1936 TO 1948, EXPRESSED AS INDEXES OF THE SAME MONTH IN 1939 & 1947 1/

	1939	1947	1939	1947	1939	1947
	%	%	%	%	%	%
1936	56.1	44.7	85.3	60.0	-	-
1937	70.7	56.3	83.5	58.8	-	-
1938	68.1	54.2	97.9	68.9	-	-
1939	100.0	79.6	100.0	70.4	100.0	33.4
1940	110.3	87.8	96.6	68.0	123.3	41.2
1941	105.3	83.9	104.8	73.8	157.9	52.7
1942	127.4	101.5	96.4	67.9	169.0	56.4
1943	105.0	83.6	74.1	52.2	188.9	63.1
1944	135.2	107.6	114.0	80.3	174.8	58.4
1945	127.5	101.5	112.4	79.1	156.2	52.2
1946	119.4	95.1	159.5	112.3	147.9	49.4
1947	125.6	100.0	142.0	100.0	299.4	100.0
1948	157.5	125.5	249.7	175.8	310.0	103.5

1/ Note that base index in each column is shown as 100.

Table 4. - CONCENTRATED WHOLE MILK PRODUCTS

Production in Canada, Exports and Imports of Principal Products
December, and January - December, 1936 to 1948.

Year	Evaporated Whole Milk		Condensed Whole Milk		Whole Milk Powder	
	December	Jan.-Dec.	December	Jan.-Dec.	December	Jan.-Dec.
PRODUCTION						
	'000 lb.	'000 lb.	'000 lb.	'000 lb.	'000 lb.	'000 lb.
1936	4,463	71,074	561	7,987	99	2,736
1937	5,206	91,331	842	11,396	410	5,455
1938	5,297	105,720	495	9,231	420	6,587
1939	8,275	116,885	456	7,571	390	6,584
1940	8,587	135,877	1,209	14,429	286	6,430
1941	7,535	165,964	1,634	24,605	475	8,314
1942	9,548	185,762	1,595	23,076	518	11,134
1943	7,030	178,368	1,600	26,915	963	15,053
1944	9,250	184,344	2,210	31,021	905	16,022
1945	9,388	200,529	1,452	28,582	726	14,851
1946	7,745	191,586	1,887	31,026	1,010	15,468
1947	8,283	211,894	2,096	29,229	900	15,662
1948	11,450	248,978	2,227	34,822	706	19,052
EXPORTS						
1936	908	13,868	72	1,356	279	3,930
1937	2,239	24,841	388	4,131	312	3,232
1938	782	27,023	113	2,675	315	4,204
1939	1,697	25,012	81	1,136	174	6,021
1940	4,971	34,746	780	6,814	285	4,348
1941	11,004	51,237	2,142	18,118	218	5,029
1942	2,749	49,229	2,288	14,595	212	2,628
1943	687	26,738	550	17,160	116	1,414
1944	867	27,325	1,340	17,908	109	1,083
1945	11,724	70,810	1,414	18,652	1,542	5,995
1946	820	47,187	747	18,316	289	4,973
1947	1,614	41,528	1,262	18,225	364	5,306
1948	1,971	32,290	1,253	21,220	223	7,449
TOTAL SUPPLY STOCKS, JAN. 1						
1936	13,659	10,455	1,086	508	81	267
1937	15,451	10,534	1,398	522	86	961
1938	20,672	15,079	1,625	1,227	-	702
1939	17,072	12,651	993	610	1	199
1940	27,815	11,765	2,366	1,180	(1)	17
1941	34,709	22,737	3,653	1,867	74	408
1942	28,629	16,611	4,219	1,377	1	55
1943	21,614	13,593	3,285	1,713	-	159
1944	49,784	39,662	6,627	4,596	1	170
1945	37,610	22,361	4,490	3,239	-	23
1946	30,205	21,054	5,292	3,793	(1)	35
1947	20,058	9,413	5,110	2,581	-	7
1948	40,872	16,267(3)	5,748	3,158	(2)	(2)
IMPORTS						

Note - Supply data which appear in the first and third columns includes stocks at the beginning of the month, plus production and imports during the month. (1) Less than 500 lbs. (2) Not available on date of publications. (3) Stocks in the hands of wholesalers not included in data for January 1, 1949.

Table 5. - CONCENTRATED MILK BY-PRODUCTS

Production in Canada, Exports and Imports of Principal Products
December, and January - December, 1936 to 1948.

Year	Skimmilk Powder		Condensed Skimmilk		Casein	
	December	Jan.-Dec.	December	Jan.-Dec.	December	Jan.-Dec.
PRODUCTION						
	'000 lb.	'000 lb.	'000 lb.	'000 lb.	'000 lb.	'000 lb.
1936	1,221	18,530	278	4,516	56	1,336
1937	1,096	18,492	319	5,000	46	1,572
1938	1,400	25,545	325	4,541	56	1,469
1939	1,444	25,339	278	3,241	42	1,671
1940	1,409	26,392	329	4,245	44	1,339
1941	1,475	26,524	376	4,560	67	1,181
1942	1,278	26,670	308	5,380	103	3,199
1943	801	22,352	179	4,041	59	3,112
1944	1,398	29,703	185	3,505	139	2,961
1945	1,469	37,111	199	3,561	71	3,683
1946	2,104	42,580	314	3,531	199	4,040
1947	1,750	54,249	226	4,263	210	6,756
1948	4,045	62,736	249	4,918	140	4,496
EXPORTS			IMPORTS(1)			
1936	93	1,310	-	-	1	140
1937	104	1,078	-	-	1	402
1938	184	1,176	-	-	2	227
1939	24	2,300	-	-	175	919
1940	8	924	-	-	81	2,095
1941	41	677	-	-	3	1,131
1942	53	438	-	-	33	1,883
1943	36	409	-	-	1	276
1944	-	22	-	-	4	481
1945	162	6,669	-	-	4	211
1946	1,680	6,051	-	-	-	135
1947	2,580	14,932	-	-	-	176
1948	2,822	29,293	-	-	(2)	(2)
DOMESTIC DISAPPEARANCE IN POUNDS PER CAPITA						
1936	.13	1.62	.03	.44	.01	.15
1937	.10	1.59	.03	.45	-	.17
1938	.15	1.73	.02	.38	.01	.13
1939	.13	2.31	.02	.31	.02	.24
1940	.16	2.26	.03	.38	.01	.30
1941	.14	2.41	.03	.40	.01	.22
1942	.17	2.24	.03	.47	.02	.37
1943	.09	1.98	.02	.35	.03	.31
1944	.12	2.38	.01	.29	.01	.27
1945	.19	2.73	.01	.31	-	.24
1946	.06	2.91	.02	.29	.01	.27
1947	.05	2.95	.02	.35	.06	.33
1948	.06	2.36	.02	.36	-	.09

(1) Condensed skimmilk is not separately listed in imports returns. Condensed milk designated as such shown in trade reports consists principally of condensed whole milk products.

(2) Not available at date of publication.

Table 6. - PRODUCTION OF DAIRY BUTTER AND WHEY BUTTER IN CANADA BY PROVINCES

November and December, 1947 and 1948.

Province	November				December 1/			
	Dairy Butter		Whey Butter		Dairy Butter		Whey Butter	
	1947	1948	1947	1948	1947	1948	1947	1948
	'000 lb.	'000 lb.	lb.	lb.	'000 lb.	'000 lb.	lb.	lb.
CANADA	3,788	4,971	84,000	66,700	3,586	5,095	35,500	31,000
P.E.I.	39	61	-	-	33	62	-	-
Nova Scotia	196	212	-	-	198	215	-	-
New Brunswick ..	376	396	-	-	291	400	-	-
Quebec	617	902	2,000	1,300	546	917	2,000	1,400
Ontario	485	800	79,000	62,900	451	815	32,000	28,200
Manitoba	412	579	2,000	1,100	406	587	1,000	1,000
Saskatchewan ...	977	1,155	-	-	977	1,188	-	-
Alberta	564	756	x	x	576	800	x	x
British Columbia	122	110	x	x	108	111	x	x

x Production figures reported by less than three firms.

The quantities produced in these provinces are included in the Canada totals.
1/Preliminary estimate.

Table 7. - SUPPLY AND DISAPPEARANCE OF CREAMERY BUTTER IN CANADA

July to December, 1947 and 1948.

	July	August	September	October	November	December (1)
	'000 lb.	'000 lb.	'000 lb.	'000 lb.	'000 lb.	'000 lb.
1. Stocks, First of Month	1947 42,618	59,095	67,112	73,374	71,158	59,325
	1948 30,712	44,844	51,067	53,653	53,910	46,710
2. Production during month	1947 42,466	36,500	33,527	27,058	15,056	10,254
	1948 42,242	36,454	30,792	23,985	16,424	11,936
3. Imports during month	1947 -	-	-	(2)	-	-
	1948 56	-	(2)	5,600	(1) 4,480	(1) 4,083
4. Total Supply	1947 35,084	95,595	100,639	100,432	86,214	69,579
	1948 73,010	31,298	81,859	83,233	74,814	62,734
5. Stocks, End of Month	1947 59,095	67,112	73,374	71,158	59,325	43,395
	1948 44,844	51,067	53,653	53,910	46,710	37,129
6. Exports during month	1947 180	143	193	200	98	73
	1948 55	14	76	63	73	59
7. Domestic Disappearance (Total supply less 5 and 6)	1947 25,809	28,340	27,072	23,074	26,791	25,611
	1948 28,111	30,217	28,130	29,265	28,031	25,546

(1) Preliminary.

(2) Less than 500 lb.

Table 8. - MILK PRODUCTION AND UTILISATION IN CANADA, BY PROVINCES,

January to December 1946, 1947 and 1948.

Section A

	Total Milk Production	Factory Production				Farm Production		
		Creamery Butter	Factory Cheese	Conc. Milk	Ice Cream	Dairy Butter	Farm Cheese	
	'000 lb.	' 000 lb.	' 000 lb.	'000 lb.	'000 lb.	'000 lb.	'000 lb.	
CANADA	1946	16,955,553	6,361,034	1,660,009	624,546	226,196	1,270,492	8,244
	1947	17,213,987	6,814,405	1,367,674	665,980	335,958	1,318,992	8,244
	1948	16,622,106	6,648,826	993,881	788,232	359,836	1,472,413	8,124
P.E.I.	1946	168,919	91,283	8,210	-	900	11,949	12
	1947	162,984	85,754	7,330	-	1,801	12,558	12
	1948	185,474	104,615	8,112	-	2,030	15,275	12
N.S.	1946	448,098	163,729	-	12,106	13,075	60,614	323
	1947	440,977	155,036	-	9,637	19,292	63,074	323
	1948	435,108	146,392	-	7,221	22,963	68,229	316
N.B.	1946	450,836	162,159	10,806	-	6,659	108,832	45
	1947	453,423	161,854	8,210	-	10,017	112,136	45
	1948	458,631	166,564	7,429	-	12,575	124,576	48
Que.	1946	4,754,468	1,999,868	481,192	156,516	45,442	182,988	334
	1947	4,863,555	2,285,058	276,406	180,970	63,262	190,298	334
	1948	4,728,277	2,248,344	162,670	237,267	67,435	233,690	328
Ont.	1946	5,724,297	1,620,676	1,073,529	374,445	98,230	181,747	1,738
	1947	5,847,593	1,804,813	990,290	391,334	143,314	191,681	1,738
	1948	5,527,080	1,737,710	753,084	442,838	146,773	231,488	1,712
Man.	1946	1,219,081	610,562	37,401	3	14,319	136,761	1,303
	1947	1,230,740	615,389	40,611	-	19,649	139,713	1,303
	1948	1,183,361	588,207	26,363	21	24,307	156,909	1,284
Sask.	1946	1,895,603	867,496	4,902	-	10,975	334,370	1,571
	1947	1,886,565	851,212	4,233	-	19,234	347,209	1,571
	1948	1,800,291	796,197	2,961	-	22,120	374,366	1,547
Alta.	1946	1,657,783	720,332	36,294	28,611	14,804	214,970	2,484
	1947	1,699,993	751,353	34,656	30,136	23,850	222,562	2,484
	1948	1,671,571	759,225	28,383	31,015	26,207	230,412	2,448
B.C.	1946	636,468	124,929	7,675	52,865	21,792	38,261	434
	1947	628,157	103,936	5,938	53,903	35,539	39,761	434
	1948	632,403	101,662	4,879	69,870	35,426	37,466	429

Table 8. - MILK PRODUCTION AND UTILIZATION IN CANADA, BY PROVINCES

January to December 1946, 1947 and 1948

Section B

	Milk Otherwise Used				Recapitulation			
	Fluid Milk	Fluid(1) Cream	Farm-home Consumed	Fed to Livestock	Factory Production	Farm Production	Otherwise Used	
	' 000 lb.	' 000 lb.	' 000 lb.	' 000 lb.	' 000 lb.	' 000 lb.	' 000 lb.	
CANADA	1946	3,645,876	608,124	1,740,072	810,960	8,871,785	1,278,736	6,805,032
	1947	3,463,250	699,289	1,722,923	817,272	9,184,017	1,327,236	6,702,734
	1948	3,344,990	663,707	1,594,163	747,934	8,790,775	1,480,537	6,350,794
P.E.I.	1946	21,203	1,474	26,473	7,415	100,393	11,961	56,565
	1947	19,652	2,146	26,279	7,452	94,885	12,570	55,529
	1948	19,221	2,282	25,344	8,583	114,757	15,287	55,430
N.S.	1946	128,071	8,453	48,687	13,040	138,910	60,937	198,251
	1947	119,608	12,309	48,692	13,006	183,965	63,397	193,615
	1948	115,484	12,403	47,988	14,112	176,576	68,545	189,987
N.B.	1946	75,707	6,282	66,339	14,007	179,624	108,877	162,335
	1947	71,839	8,959	66,116	14,247	180,081	112,181	161,161
	1948	68,187	8,769	58,955	11,528	186,568	124,624	147,439
Que.	1946	1,158,749	193,170	374,101	162,108	2,583,019	183,322	1,888,128
	1947	1,107,571	225,999	368,533	165,324	2,805,696	190,632	1,867,227
	1948	1,066,697	211,133	337,050	163,663	2,715,715	234,018	1,778,543
Ont.	1946	1,490,713	173,625	506,374	203,220	3,166,880	183,485	2,373,932
	1947	1,400,405	209,992	507,285	206,741	3,329,751	193,419	2,324,423
	1948	1,344,100	201,401	487,921	180,053	3,080,405	233,200	2,213,475
Man.	1946	156,641	44,815	143,214	74,062	662,285	138,064	418,732
	1947	148,991	48,041	142,515	74,528	675,649	141,016	414,075
	1948	144,651	45,826	132,162	63,631	638,898	158,193	386,270
Sask.	1946	144,881	43,089	331,879	156,440	883,373	335,941	676,289
	1947	140,249	45,151	332,026	155,680	874,679	348,780	663,106
	1948	138,961	41,647	285,751	136,741	821,273	375,913	603,100
Alta.	1946	226,464	55,342	204,848	153,634	800,041	217,454	640,288
	1947	210,989	66,396	204,215	153,352	839,995	225,046	634,952
	1948	206,322	62,030	180,337	145,192	844,830	232,860	593,881
B.C.	1946	243,447	81,874	38,157	27,034	207,261	38,695	390,512
	1947	244,146	80,296	37,262	26,942	199,316	40,195	388,646
	1948	241,367	78,216	38,655	24,431	211,837	37,897	382,669

(1) Cream expressed as milk. (2) 1948 figures are preliminary and will be revised in the Supplement to the Dairy Review to be issued about the end of February. 1947 figures are also subject to revision.

STATISTICS CANADA LIBRARY
BIBLIOTHÈQUE STATISTIQUE CANADA



1010779677