



Published by Authority of the Rt. Hon. C. D. Howe, M.P., Minister of Trade and Commerce
DOMINION BUREAU OF STATISTICS

MONTHLY DAIRY REVIEW OF CANADA 1948

STATISTICS STATISTIQUES
CANADA CANADA

Dominion Statistician:
Director, Agricultural Division:
In Charge of Dairy Statistics:

Herbert Marshall
C. V. Parker
P. H. Ferguson

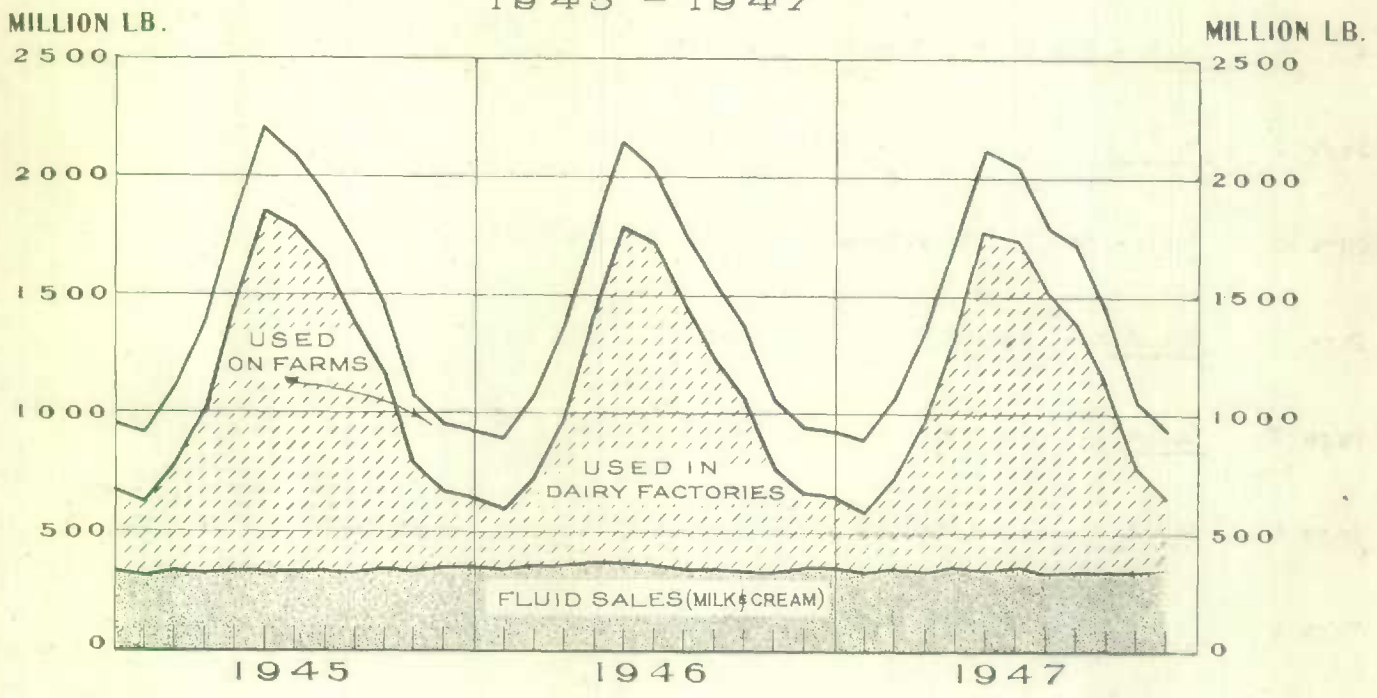
Volume No. 1X, Report No. 2

(February)

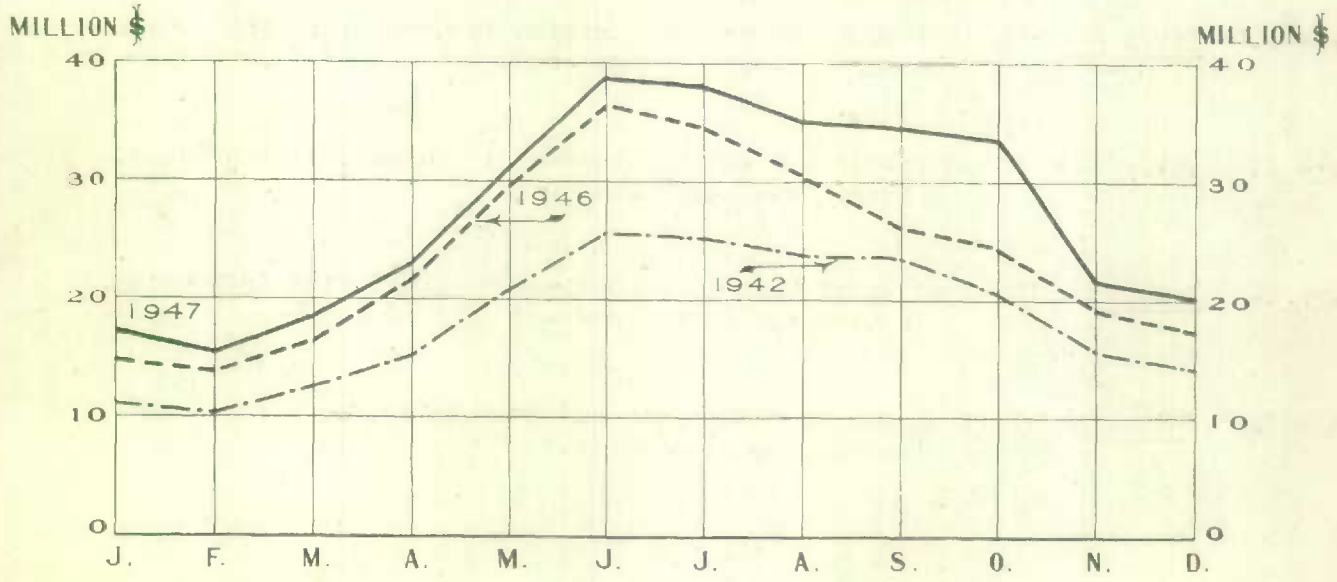
Published March 20, 1948.

LIBRARY
BIBLIOTHÈQUE

MILK PRODUCTION AND UTILIZATION 1945 - 1947



SALES INCOME FROM DAIRYING



C O N T E N T S

| | |
|---------|---|
| Page 1 | <u>Summary</u> - The Dairy Position in Brief |
| Page 2 | <u>Table 1</u> - The Butter Position in Canada |
| Page 3 | <u>Text</u> - The Dairy Situation in Canada |
| Page 4 | <u>Table 2</u> - The Cheese Position in Canada |
| Page 5 | <u>Text</u> - The Dairy Situation in Canada (Concluded) |
| Page 6 | <u>Table 3</u> - Concentrated Milk Products and Ice Cream |
| Page 7 | <u>Table 4</u> - Concentrated Whole Milk Products |
| Page 8 | <u>Table 5</u> - Concentrated Milk By-Products |
| Page 9 | <u>Table 6</u> - Production of Milk per Cow and Percentages of Cows Milking |
| Page 9 | <u>Table 7</u> - Production of Dairy Butter and Whey Butter in Canada |
| Page 10 | <u>Table 8-A</u> - Milk Production and Utilization in Canada, by Provinces, January 1946, 1947 and 1948. |
| Page 11 | <u>Table 8-B</u> - Milk Production and Utilization in Canada, by Provinces, January 1946, 1947 and 1948. |
| Page 12 | <u>Table 9</u> - Utilization of Milk in Percentage of Total Milk Production, In Canada, by Provinces. |
| Page 13 | <u>Table 10</u> - Farm Income from Dairying and Average Prices per Hundred Pounds of Milk. |

THE DAIRY POSITION IN BRIEF

The production of creamery butter in the month of February was less than that of the same month of the preceding year by 7 per cent.

The total butter supply in the month of February was $9\frac{1}{2}$ per cent less than that of the same month of 1947, while the domestic disappearance increased $5\frac{1}{2}$ per cent.

Wholesale butter prices at Montreal quoted by the Canadian Commodity Exchange averaged $67\frac{1}{2}$ cents per pound in February as against 40 cents in the same month last year. Cheese prices averaged $36\frac{1}{4}$ cents as compared with 23 cents in February, 1947.

The total farm milk production of Canada in the month of January was 4 per cent less than that of January, 1947. All provinces with the exception of Prince Edward Island, Alberta and British Columbia contributed to the reduction indicated.

Fluid sales in the month of January were approximately $10\frac{1}{2}$ million pounds less than those of the same month last year. Fluid milk declined 5 per cent while fluid cream on a milk basis increased 10 per cent. Sales of milk by provinces revealed decreases in all sections of the Dominion with the exception of Prince Edward Island. Cream sales increased in all provinces but Manitoba and Alberta.

Total income from dairying during January was approximately 24 per cent greater than that recorded in the same month of the previous year, and the average price was \$3.16 as against \$2.55 per hundred in the corresponding month of 1947.

Milk used in dairy factory production fell approximately 9 per cent below that of January, 1947. However, in three of the provinces, Prince Edward Island, Alberta and British Columbia, the quantity used for this purpose was greater than that of the same month last year.

The total numbers of milch cows on farms showed a reduction of approximately 1 per cent as compared with a reduction of $1\frac{1}{2}$ per cent in the previous month.

The weather was clear and cold in most sections of Canada during February with light snowfall and considerably more sunshine than that reported in the same month of the previous year. It was inclined to be somewhat cool and cloudy in Alberta and British Columbia with quite heavy precipitation on the Western coast. There was no evidence of a feed shortage during February, although supplies are low and farmers appear to be limiting their purchases of mill feeds and concentrates.

Table 1. - THE BUTTER POSITION IN CANADA
February, and January-February, 1936 to 1948.

| Year | Creamery Butter | | Dairy Butter 1/ | | Total Butter 2/ | |
|------------|-----------------|-----------|-----------------|--------------|-----------------|-----------|
| | February | Jan.-Feb. | February | Jan.-Feb. | February | Jan.-Feb. |
| PRODUCTION | | | | | | |
| | '000 lb. | '000 lb. | '000 lb. | '000 lb. | '000 lb. | '000 lb. |
| 1936 | 8,042 | 17,462 | 8,017 | 15,507 | 16,090 | 33,036 |
| 1937 | 7,628 | 16,578 | 7,843 | 15,213 | 15,511 | 31,877 |
| 1938 | 7,611 | 15,980 | 7,585 | 14,758 | 15,236 | 30,824 |
| 1939 | 8,473 | 18,279 | 7,297 | 14,215 | 15,810 | 32,580 |
| 1940 | 9,156 | 19,618 | 7,053 | 13,732 | 16,253 | 33,445 |
| 1941 | 9,966 | 21,700 | 6,946 | 13,505 | 16,959 | 35,305 |
| 1942 | 9,336 | 20,064 | 6,584 | 12,811 | 15,980 | 33,004 |
| 1943 | 11,875 | 24,995 | 4,610 | 9,060 | 16,511 | 34,114 |
| 1944 | 10,980 | 21,862 | 4,693 | 9,034 | 15,713 | 30,981 |
| 1945 | 10,605 | 22,027 | 4,461 | 8,668 | 15,117 | 30,802 |
| 1946 | 8,680 | 18,309 | 4,592 | 8,960 | 13,307 | 27,346 |
| 1947 | 8,689 | 18,504 | 4,711 | 9,225 | 13,429 | 27,721 |
| 1948 | 8,078 | 17,026 | 5,132 | 10,027 | 13,229 | 27,094 |

DOMESTIC DISAPPEARANCE IN POUNDS PER CAPITA

| | | | | | | |
|------|------|------|-----|------------|------|------|
| 1936 | 1.50 | 2.99 | .74 | 1.43 | 2.24 | 4.43 |
| 1937 | 1.55 | 3.02 | .72 | 1.39 | 2.27 | 4.42 |
| 1938 | 1.48 | 3.08 | .68 | 1.33 | 2.16 | 4.42 |
| 1939 | 1.57 | 3.18 | .66 | 1.28 | 2.23 | 4.47 |
| 1940 | 1.67 | 3.32 | .62 | 1.20 | 2.30 | 4.54 |
| 1941 | 1.67 | 3.25 | .61 | 1.19 | 2.28 | 4.45 |
| 1942 | 1.81 | 3.70 | .58 | 1.12 | 2.40 | 4.84 |
| 1943 | 1.27 | 3.09 | .41 | .80 | 1.68 | 3.89 |
| 1944 | 2.05 | 4.10 | .41 | .79 | 2.47 | 4.91 |
| 1945 | 1.72 | 3.56 | .39 | .75 | 2.11 | 4.32 |
| 1946 | 1.74 | 3.59 | .37 | .73 | 2.12 | 4.34 |
| 1947 | 1.61 | 3.33 | .37 | .73 | 1.99 | 4.07 |
| 1948 | 1.62 | 3.28 | .40 | .78 | 2.02 | 4.06 |

FEBRUARY MAKE, 1936 TO 1948, EXPRESSED AS INDEXES OF THE SAME MONTH IN 1939 AND 1947 3/

| | | | | | | |
|------|-------|-------|-------|-------|-------|-------|
| 1936 | 94.9 | 92.6 | 109.9 | 170.2 | 101.8 | 119.8 |
| 1937 | 90.0 | 87.8 | 107.5 | 166.5 | 98.1 | 115.5 |
| 1938 | 89.8 | 87.6 | 103.9 | 161.0 | 96.4 | 113.5 |
| 1939 | 100.0 | 97.5 | 100.0 | 154.9 | 100.0 | 117.7 |
| 1940 | 108.1 | 105.4 | 96.7 | 149.7 | 102.8 | 121.0 |
| 1941 | 117.6 | 114.7 | 95.2 | 147.4 | 107.3 | 126.3 |
| 1942 | 110.2 | 107.4 | 90.2 | 139.8 | 101.1 | 119.0 |
| 1943 | 140.2 | 136.7 | 63.2 | 97.9 | 104.4 | 123.0 |
| 1944 | 129.6 | 126.4 | 64.3 | 99.6 | 99.4 | 117.0 |
| 1945 | 125.2 | 122.1 | 61.1 | 94.7 | 95.6 | 112.6 |
| 1946 | 102.4 | 99.9 | 62.9 | 97.5 | 84.2 | 99.1 |
| 1947 | 102.5 | 100.0 | 64.6 | 100.0 | 84.9 | 100.0 |
| 1948 | 95.3 | 93.0 | 70.3 | 108.9 | 83.7 | 98.5 |

- 1/ Data for February, 1948 are preliminary; revisions for January appear on Table 7
 2/ Includes Whey Butter amounting to 28,700 pounds in February, 1947 and 19,300 pounds in February, 1948.
 3/ Note the base index in each column is shown as 100.

THE BUTTER SITUATION

Production: Creamery butter production in February reached a total of 8 million pounds, being 611 thousand pounds below the quantity produced in the corresponding month of the preceding year. The dairy butter make was approximately $5\frac{1}{4}$ million pounds, while whey butter fell to 19 thousand pounds. The creamery butter and whey butter make declined, while dairy butter production showed a slight increase over that of February, 1947.

Total Supply: The total supply of butter (creamery, dairy and whey), which is represented by stocks at beginning plus February production, amounted to approximately $44\frac{3}{4}$ million pounds. This represented a decline of approximately $4\frac{3}{4}$ million pounds in comparison with the total supply reported in February, 1947. This **situation** arises from a decline in the current make and smaller stock reserves.

Domestic Disappearance: The domestic disappearance of total butter in February was 26 million pounds as compared with 25 million pounds a year ago and $26\frac{1}{4}$ million pounds in the previous month. In pounds per capita, the February disappearance was 2.02 pounds in comparison with 2.04 pounds last month and 1.99 pounds in the same month last year. High prices have tended to check the upward movement in the domestic disappearance which was revealed in the late summer and autumn months of 1947.

SUPPLIES OF OTHER FACTORY PRODUCTS

Cheddar Cheese Production: The February make of cheddar cheese fell to slightly less than 1 million pounds, almost $\frac{1}{2}$ million pounds less than the amount made in the same month of 1947. It may be noted from Table 2 that the February make was the lowest output for that month during the last ten years.

Concentrated Milk Products: The total quantity of concentrated milk products manufactured in February was 13 million pounds. Compared with the same month of the previous year the February production represented a decline of slightly less than a $\frac{1}{4}$ million pounds. The output of concentrated whole milk products was greater than that of the preceding February by 296 thousand pounds. Milk by-products registered a reduction of $\frac{1}{2}$ million pounds. The domestic disappearance of concentrated whole milk products per capita (see Table 3), was .91 pounds in February as against .98 pounds in the same month last year. The domestic disappearance of milk by-products for February, 1947 and 1948, amounted to .25 and .19 pounds, respectively.

Ice Cream: The quantity of ice cream manufactured in February was approximately 1 million gallons, or 375 thousand gallons more than that manufactured in the same month a year ago.

Table 2 - THE CHEESE POSITION IN CANADA
February, and January-February, 1936 to 1948.

| Year | Cheddar Cheese 1/ | | Other Cheese | | Total Cheese 2/ | |
|--|-------------------|-----------|--------------|-----------|-----------------|----------------|
| | February | Jan.-Feb. | February | Jan.-Feb. | February | Jan.-Feb. |
| PRODUCTION | | | | | | |
| | '000 lb. | '000 lb. | '000 lb. | '000 lb. | '000 lb. | '000 lb. |
| 1936 | 870 | 1,932 | - | - | 959 | 2,109 |
| 1937 | 791 | 1,791 | - | - | 875 | 1,959 |
| 1938 | 561 | 1,255 | - | - | 638 | 1,410 |
| 1939 | 1,205 | 2,673 | - | - | 1,276 | 2,816 |
| 1940 | 1,854 | 3,686 | 23 | 52 | 1,945 | 3,874 |
| 1941 | 966 | 2,084 | 31 | 70 | 1,063 | 2,286 |
| 1942 | 3,998 | 9,063 | 24 | 54 | 4,088 | 9,249 |
| 1943 | 1,589 | 3,722 | 88 | 206 | 1,740 | 4,054 |
| 1944 | 1,914 | 4,525 | 88 | 204 | 2,065 | 4,855 |
| 1945 | 2,059 | 4,649 | 118 | 265 | 2,238 | 5,037 |
| 1946 | 1,378 | 3,077 | 120 | 260 | 1,560 | 3,462 |
| 1947 | 1,362 | 3,048 | 212 | 455 | 1,636 | 3,628 |
| 1948 | 894 | 1,852 | 93 | 216 | 1,048 | 2,190 |
| | EXPORTS | | IMPORTS | | TOTAL SUPPLY | STOCKS, MAR. 1 |
| 1936 | 711 | 1,726 | 38 | 106 | 23,214 | 19,344 |
| 1937 | 704 | 1,334 | 107 | 173 | 22,849 | 20,112 |
| 1938 | 420 | 775 | 93 | 159 | 27,282 | 24,176 |
| 1939 | 895 | 2,224 | 95 | 155 | 31,256 | 27,361 |
| 1940 | 3,952 | 5,918 | 133 | 353 | 22,798 | 15,103 |
| 1941 | 1,107 | 1,974 | 210 | 232 | 22,773 | 18,420 |
| 1942 | 11,564 | 17,781 | 57 | 130 | 30,651 | 18,550 |
| 1943 | 18,312 | 21,251 | 43 | 109 | 50,333 | 27,508 |
| 1944 | 7,282 | 17,404 | 83 | 200 | 35,445 | 28,326 |
| 1945 | 3,833 | 9,193 | 7 | 63 | 34,744 | 24,254 |
| 1946 | 5,568 | 14,900 | 88 | 242 | 26,016 | 20,164 |
| 1947 | 39 | 2,158 | 217 | 288 | 25,281 | 20,192 |
| 1948 | 253 | 5,390 | - | - | - | 25,076 |
| FEBRUARY MAKE, 1936 TO 1948, EXPRESSED AS INDEXES OF THE SAME MONTH IN 1939 AND 1947 | | | | | | |
| | 1939 | 1947 | 1939 | 1947 | 1939 | 1947 |
| | % | % | % | % | % | % |
| 1936 | 72.2 | 63.9 | - | - | 75.2 | 58.6 |
| 1937 | 65.6 | 58.1 | - | - | 68.6 | 53.5 |
| 1938 | 46.6 | 41.2 | - | - | 50.0 | 39.0 |
| 1939 | 100.0 | 88.5 | - | - | 100.0 | 78.0 |
| 1940 | 153.9 | 136.1 | - | 10.8 | 152.4 | 118.9 |
| 1941 | 80.2 | 70.9 | - | 14.6 | 83.3 | 65.0 |
| 1942 | 331.8 | 293.5 | - | 11.3 | 320.4 | 249.9 |
| 1943 | 131.9 | 116.7 | - | 41.5 | 136.4 | 106.4 |
| 1944 | 158.8 | 140.5 | - | 41.5 | 161.8 | 126.2 |
| 1945 | 170.9 | 151.2 | - | 55.7 | 175.4 | 136.8 |
| 1946 | 114.4 | 101.2 | - | 56.6 | 122.3 | 95.4 |
| 1947 | 113.0 | 100.0 | - | 100.0 | 128.2 | 100.0 |
| 1948 | 74.2 | 65.6 | - | 43.9 | 82.1 | 64.1 |

1/ Includes other cheese produced in Quebec, 1936 to 1939. 2/ Farm-made cheese is included in data shown in this column. - Not available. - Imports not available (see Trade Report No. 101 for data).

MILK PRODUCTION AND UTILIZATION

Milk Production: The total milk production of Canada in the month of January amounted to 902,956,000 pounds, representing a decrease of $39\frac{1}{2}$ million pounds, as compared with January, 1947.

Fluid Sales: January sales of milk and cream (the latter expressed as milk), amounted to 347,746,000 pounds, 84 per cent of which was sold in the form of milk and 16 per cent in the form of cream. The January sales were approximately $10\frac{1}{2}$ million pounds less than those of the same month of the previous year. Milk sales declined $15\frac{3}{4}$ million pounds, while cream sales expressed as milk were $5\frac{1}{4}$ million pounds greater than those of January, 1947.

Sales Income: Farm income from the sale of dairy products amounted to \$21,153,000 in January, 1948, in comparison with \$17,082,000 in the same month of the previous year. Higher prices per unit were largely responsible for this advance, the weighted average being \$3.16 per hundred pounds of milk as compared with \$2.55 in January, 1947. The upward movement in prices applied to all products. On account of the increased demand for butter, churning cream values moved up to higher levels; so that the prices received for both creamery butter-fat and dairy butter indicated marked increases over those of the same month of the previous year. It will be noted from Table 10 that the income from the sale of dairy butter was almost five times greater than last year. This was due to a substantial increase in the percentage of butter sold off farms as well as to the increase in price. Fluid prices advanced to a lesser degree than the prices of manufactured products.

Production Conditions on Farms: During the month of February, the weather was clear and cold in Quebec and the Maritime Provinces with much more sunshine than usual, but very little snow. Moderate temperatures prevailed in Ontario; the hours of bright sunshine were greater than those of a year ago, but snowfall was about the same. It was inclined to be mild in the Prairie Provinces, but colder in British Columbia. Compared with the previous February, there was less sunshine in both Alberta and British Columbia. In the former province, the precipitation (mostly in the form of snow) was about the same as last year, while the rainfall in British Columbia was greater than that of February, 1947.

Supplies of home-grown feeds are running low and the high costs of mill feeds and concentrates continue to limit the use of these products on Canadian farms.

Table 3 - CONCENTRATED MILK PRODUCTS AND ICE CREAM
Production and Domestic Disappearance in Canada.
February, and January - February, 1936 to 1948.

| Year | Whole Milk Products | | Milk By-Products | | Ice Cream | |
|---|---------------------|-----------|------------------|-----------|-----------|-----------|
| | February | Jan.-Feb. | February | Jan.-Feb. | February | Jan.-Feb. |
| PRODUCTION | | | | | | |
| | '000 lb. | '000 lb. | '000 lb. | '000 lb. | '000 gal. | '000 gal. |
| 1936 | 3,755 | 7,231 | 1,408 | 3,123 | - | - |
| 1937 | 5,086 | 10,197 | 1,349 | 3,119 | - | - |
| 1938 | 6,497 | 13,448 | 1,463 | 3,163 | - | - |
| 1939 | 4,276 | 9,456 | 1,815 | 3,940 | 431 | 794 |
| 1940 | 7,481 | 15,254 | 1,806 | 3,875 | 527 | 971 |
| 1941 | 10,116 | 20,305 | 1,759 | 3,963 | 673 | 1,244 |
| 1942 | 9,407 | 18,173 | 1,880 | 4,030 | 703 | 1,318 |
| 1943 | 9,110 | 19,466 | 1,705 | 3,456 | 712 | 1,318 |
| 1944 | 8,671 | 18,947 | 1,938 | 3,485 | 783 | 1,621 |
| 1945 | 10,298 | 22,820 | 2,338 | 4,693 | 769 | 1,564 |
| 1946 | 9,641 | 19,120 | 1,927 | 4,338 | 662 | 1,465 |
| 1947 | 10,366 | 20,924 | 2,872 | 6,140 | 630 | 1,393 |
| 1948 | 10,662 | 21,150 | 2,339 | 4,833 | 1,005 | 2,026 |
| DOMESTIC DISAPPEARANCE IN POUNDS PER CAPITA | | | | | | |
| 1936 | .58 | .82 | .19 | .32 | - | - |
| 1937 | .55 | 1.08 | .15 | .31 | - | - |
| 1938 | .56 | 1.16 | .15 | .30 | - | - |
| 1939 | .79 | 1.35 | .17 | .38 | .04 | .07 |
| 1940 | .54 | 1.36 | .23 | .50 | .05 | .09 |
| 1941 | .59 | 1.42 | .21 | .49 | .06 | .11 |
| 1942 | .87 | 1.87 | .24 | .42 | .06 | .11 |
| 1943 | 1.02 | 1.92 | .22 | .39 | .06 | .11 |
| 1944 | .79 | 1.60 | .19 | .38 | .07 | .14 |
| 1945 | 1.81 | 3.09 | .24 | .46 | .07 | .14 |
| 1946 | 1.14 | 2.26 | .19 | .45 | .05 | .12 |
| 1947 | .98 | 2.08 | .25 | .52 | .05 | .11 |
| 1948 | .91 | 1.80 | .19 | .40 | .08 | .16 |
| FEBRUARY MAKE, 1936 TO 1948, EXPRESSED AS INDEXES OF THE SAME MONTH IN 1939 AND 1947 1/ | | | | | | |
| | 1939 | 1947 | 1939 | 1947 | 1939 | 1947 |
| | % | % | % | % | % | % |
| 1936 | 87.8 | 36.2 | 77.6 | 49.0 | - | - |
| 1937 | 118.9 | 49.1 | 74.3 | 47.0 | - | - |
| 1938 | 151.9 | 62.7 | 80.6 | 50.9 | - | - |
| 1939 | 100.0 | 41.3 | 100.0 | 63.2 | 100.0 | 68.4 |
| 1940 | 175.0 | 72.2 | 99.5 | 62.9 | 122.3 | 83.7 |
| 1941 | 236.6 | 97.6 | 96.9 | 61.2 | 156.1 | 106.8 |
| 1942 | 220.0 | 90.7 | 103.6 | 65.5 | 163.1 | 111.6 |
| 1943 | 213.0 | 87.9 | 93.9 | 59.4 | 165.2 | 113.0 |
| 1944 | 202.8 | 83.6 | 106.8 | 67.5 | 181.7 | 124.3 |
| 1945 | 240.8 | 99.3 | 128.8 | 81.4 | 178.4 | 122.1 |
| 1946 | 225.5 | 93.0 | 106.2 | 67.1 | 153.6 | 105.1 |
| 1947 | 242.4 | 100.0 | 158.2 | 100.0 | 146.2 | 100.0 |
| 1948 | 249.3 | 102.9 | 128.9 | 81.4 | 233.2 | 159.5 |

1/ Note that base index in each column is shown as 100.

Table 4 - CONCENTRATED WHOLE MILK PRODUCTS

Production in Canada, Exports and Imports of Principal Products
February, and January - February, 1936 to 1948.

| Year | Evaporated Whole Milk | | Condensed Whole Milk | | Whole Milk Powder | |
|------------|-----------------------|----------------|----------------------|----------------|-------------------|-----------|
| | February | Jan.-Feb. | February | Jan.-Feb. | February | Jan.-Feb. |
| PRODUCTION | | | | | | |
| | '000 lb. | '000 lb. | '000 lb. | '000 lb. | '000 lb. | '000 lb. |
| 1936 | 3,070 | 5,785 | 547 | 1,152 | 53 | 120 |
| 1937 | 4,101 | 8,284 | 663 | 1,259 | 212 | 425 |
| 1938 | 5,360 | 11,185 | 570 | 1,177 | 429 | 806 |
| 1939 | 3,156 | 7,294 | 564 | 1,138 | 333 | 572 |
| 1940 | 6,495 | 13,289 | 512 | 881 | 317 | 769 |
| 1941 | 8,896 | 17,294 | 696 | 2,000 | 434 | 812 |
| 1942 | 7,914 | 14,917 | 826 | 1,862 | 562 | 1,174 |
| 1943 | 7,042 | 15,094 | 1,245 | 2,827 | 769 | 1,432 |
| 1944 | 6,329 | 14,791 | 1,429 | 2,358 | 847 | 1,653 |
| 1945 | 7,271 | 16,982 | 1,941 | 3,621 | 917 | 1,898 |
| 1946 | 7,784 | 15,308 | 1,117 | 2,384 | 593 | 1,148 |
| 1947 | 7,609 | 15,730 | 1,634 | 2,979 | 888 | 1,870 |
| 1948 | 8,804 | 17,029 | 1,022 | 2,328 | 651 | 1,432 |
| EXPORTS | | | | | | |
| 1936 | 634 | 1,215 | 89 | 136 | 430 | 949 |
| 1937 | 798 | 1,462 | 116 | 289 | 201 | 395 |
| 1938 | 1,457 | 2,838 | 237 | 544 | 304 | 663 |
| 1939 | 746 | 1,131 | 97 | 189 | 433 | 815 |
| 1940 | 934 | 2,435 | 663 | 726 | 306 | 709 |
| 1941 | 4,331 | 8,818 | 1,423 | 1,591 | 536 | 754 |
| 1942 | 4,864 | 8,372 | 231 | 1,004 | 146 | 318 |
| 1943 | 2,085 | 3,460 | 954 | 3,054 | 255 | 407 |
| 1944 | 2,252 | 3,919 | 596 | 1,896 | 57 | 132 |
| 1945 | 3,860 | 11,491 | 940 | 2,709 | 140 | 196 |
| 1946 | 895 | 4,545 | 772 | 1,403 | 331 | 406 |
| 1947 | 520 | 1,421 | 846 | 2,131 | 87 | 212 |
| 1948 | 553 | 1,305 | 495 | 2,095 | 128 | 625 |
| | TOTAL SUPPLY | STOCKS, MAR. 1 | TOTAL SUPPLY | STOCKS, MAR. 1 | IMPORTS | |
| 1936 | 11,562 | 5,332 | 1,461 | 522 | 64 | 64 |
| 1937 | 12,911 | 6,959 | 1,149 | 392 | 90 | 98 |
| 1938 | 14,151 | 7,454 | 1,039 | 345 | 174 | 219 |
| 1939 | 16,587 | 8,060 | 1,584 | 772 | - | 8 |
| 1940 | 15,596 | 8,683 | 1,047 | 393 | (1) | 1 |
| 1941 | 23,818 | 12,703 | 1,447 | 468 | 51 | 51 |
| 1942 | 24,051 | 10,215 | 2,117 | 1,329 | - | 18 |
| 1943 | 20,665 | 8,588 | 2,130 | 508 | 1 | 1 |
| 1944 | 18,317 | 8,905 | 2,759 | 1,126 | - | 1 |
| 1945 | 37,044 | 14,349 | 5,314 | 2,957 | - | 1 |
| 1946 | 22,772 | 9,731 | 3,310 | 1,312 | 1 | 1 |
| 1947 | 24,500 | 14,083 | 4,023 | 2,096 | 1 | 1 |
| 1948 | 14,566 | 2,550(3) | 3,548 | 1,908 | (2) | (2) |

Note - Supply data which appear in the first and third columns includes stocks at the beginning of the month, plus production and imports during the month. (1) Less than 500 lbs. (2) Not available on date of publication. (3) Stocks in the hands of wholesalers not included in data for March 1, 1948.

Table 5. - CONCENTRATED MILK BY-PRODUCTS
 Production in Canada, Exports and Imports of Principal Products
 February, and January - February, 1936 to 1948.

| Year | Skimmilk Powder | | Condensed Skimmilk | | Casein | |
|---|-----------------|-----------|--------------------|-----------|----------|-----------|
| | February | Jan.-Feb. | February | Jan.-Feb. | February | Jan.-Feb. |
| PRODUCTION | | | | | | |
| | '000 lb. | '000 lb. | '000 lb. | '000 lb. | '000 lb. | '000 lb. |
| 1936 | 865 | 1,962 | 342 | 708 | 31 | 81 |
| 1937 | 817 | 1,910 | 306 | 617 | 66 | 164 |
| 1938 | 950 | 2,015 | 285 | 557 | 33 | 72 |
| 1939 | 1,318 | 2,843 | 147 | 315 | 112 | 205 |
| 1940 | 1,306 | 2,797 | 258 | 523 | 17 | 81 |
| 1941 | 1,257 | 2,750 | 234 | 623 | 26 | 84 |
| 1942 | 1,176 | 2,544 | 415 | 859 | 82 | 162 |
| 1943 | 1,077 | 2,101 | 212 | 437 | 79 | 151 |
| 1944 | 1,253 | 2,063 | 200 | 371 | 53 | 95 |
| 1945 | 1,530 | 3,128 | 300 | 493 | 87 | 213 |
| 1946 | 1,429 | 3,048 | 137 | 310 | 53 | 113 |
| 1947 | 1,711 | 3,710 | 260 | 581 | 153 | 349 |
| 1948 | 1,304 | 2,685 | 323 | 645 | 77 | 193 |
| EXPORTS | | | IMPORTS (1) | | | |
| 1936 | 143 | 316 | - | - | 12 | 29 |
| 1937 | 67 | 132 | - | - | 14 | 17 |
| 1938 | 101 | 221 | - | - | 4 | 21 |
| 1939 | 341 | 546 | - | - | 16 | 76 |
| 1940 | 62 | 103 | - | - | 27 | 345 |
| 1941 | 21 | 24 | - | - | 25 | 69 |
| 1942 | 28 | 60 | - | - | 76 | 105 |
| 1943 | 43 | 43 | - | - | 2 | 12 |
| 1944 | - | - | - | - | 173 | 285 |
| 1945 | - | - | - | - | (3) | 10 |
| 1946 | 2 | 134 | - | - | (3) | 81 |
| 1947 | 445 | 821 | - | - | 90 | 90 |
| 1948 | 1,258 | 1,777 | - | - | (2) | (2) |
| DOMESTIC DISAPPEARANCE IN POUNDS PER CAPITA | | | | | | |
| 1936 | .12 | .17 | .04 | .09 | .01 | .02 |
| 1937 | .10 | .20 | .03 | .06 | .01 | .02 |
| 1938 | .09 | .18 | .03 | .06 | .01 | .02 |
| 1939 | .10 | .28 | .01 | .02 | .04 | .03 |
| 1940 | .17 | .32 | .02 | .05 | .01 | .06 |
| 1941 | .14 | .33 | .02 | .05 | .01 | .03 |
| 1942 | .13 | .26 | .04 | .08 | .02 | .03 |
| 1943 | .14 | .24 | .02 | .04 | .02 | .03 |
| 1944 | .12 | .21 | .02 | .04 | .01 | .04 |
| 1945 | .16 | .31 | .03 | .05 | .01 | .02 |
| 1946 | .15 | .32 | .01 | .03 | - | .02 |
| 1947 | .14 | .29 | .02 | .05 | .03 | .06 |
| 1948 | .09 | .23 | .03 | .05 | - | - |

(1) Condensed skimmilk is not separately listed in import returns. Condensed milk designated as such shown in trade reports consists principally of condensed whole milk products.

(2) Not available at date of publication.

(3) Less than 500 lbs.

Table 6 - PRODUCTION OF MILK PER COW AND PERCENTAGES OF COWS MILKING

Based on Reports of Dairy Correspondents for January 1944 to 1948

| Province | Milk Production per Cow in Pounds per Day | | | | | | Percentages of Cows Milking | | | | | |
|-------------------|--|------|------|------|------|------|-----------------------------|------|------|------|------|------|
| | 1944 | 1945 | 1946 | 1947 | 1948 | Av. | 1944 | 1945 | 1946 | 1947 | 1948 | Av. |
| CANADA | 10.3 | 12.4 | 12.5 | 13.7 | 13.3 | 12.4 | 58.6 | 63.6 | 63.3 | 66.7 | 65.7 | 63.6 |
| Prince Edward Is. | 9.3 | 14.5 | 12.4 | 12.0 | 11.4 | 11.9 | 67.6 | 81.3 | 67.1 | 74.7 | 75.0 | 73.1 |
| Nova Scotia | 12.3 | 14.5 | 15.1 | 15.3 | 13.9 | 14.2 | 75.3 | 79.2 | 80.2 | 76.8 | 76.7 | 77.6 |
| New Brunswick ... | 12.9 | 14.5 | 14.3 | 11.5 | 10.7 | 12.8 | 73.2 | 75.4 | 71.2 | 75.7 | 75.1 | 74.1 |
| Quebec | 8.1 | 9.6 | 9.5 | 9.5 | 9.3 | 9.2 | 52.3 | 50.0 | 51.2 | 52.5 | 54.6 | 52.1 |
| Ontario | 11.6 | 12.7 | 12.4 | 14.8 | 13.6 | 12.0 | 61.8 | 60.6 | 59.8 | 64.6 | 62.2 | 61.8 |
| Manitoba | 10.3 | 11.6 | 11.7 | 13.6 | 12.7 | 12.0 | 57.4 | 64.3 | 63.6 | 68.1 | 65.4 | 63.8 |
| Saskatchewan | 9.4 | 12.0 | 12.1 | 12.9 | 12.7 | 11.8 | 54.4 | 64.5 | 62.8 | 61.3 | 62.4 | 61.1 |
| Alberta | 10.7 | 11.4 | 11.9 | 14.8 | 14.2 | 12.6 | 58.7 | 61.8 | 62.7 | 70.5 | 66.5 | 64.0 |
| British Columbia. | 15.8 | 16.3 | 16.6 | 15.5 | 16.1 | 16.1 | 74.6 | 77.0 | 77.6 | 75.8 | 76.0 | 76.2 |

Table 7 - PRODUCTION OF DAIRY BUTTER AND WHEY BUTTER IN CANADA,
by Provinces, January 1946, 1947 and 1948

| Province | DAIRY BUTTER | | | WHEY BUTTER | | |
|-------------------|--------------|---------|---------|-------------|--------|--------|
| | 1946 | 1947 | 1948 | 1946 | 1947 | 1948 |
| | 000 lb. | 000 lb. | 000 lb. | lb. | lb. | lb. |
| CANADA | 4,368 | 4,514 | 4,895 | 42,300 | 33,000 | 22,100 |
| Prince Edward Is. | 28 | 25 | 26 | - | - | - |
| Nova Scotia | 163 | 171 | 145 | - | - | - |
| New Brunswick ... | 349 | 377 | 452 | - | - | - |
| Quebec | 563 | 591 | 632 | 5,000 | 4,000 | 1,700 |
| Ontario | 525 | 546 | 622 | 35,000 | 27,000 | 18,100 |
| Manitoba | 417 | 430 | 456 | 300 | 1,000 | 900 |
| Saskatchewan | 1,327 | 1,354 | 1,395 | - | - | - |
| Alberta | 881 | 903 | 1,038 | x | x | x |
| British Columbia. | 115 | 117 | 129 | x | x | x |

x Since less than three firms reported whey butter production, figures are not shown. The quantity produced during the month is included however, in the total for Canada.

Table 8 - MILK PRODUCTION AND UTILIZATION IN CANADA, BY PROVINCES,

January 1946, 1947 and 1948

Section A

| | Total Milk Production | Factory Production | | | | Farm Production | | |
|--------|-----------------------|--------------------|----------------|------------|-----------|-----------------|-------------|-----|
| | | Creamery Butter | Factory Cheese | Cond. Milk | Ice Cream | Dairy Butter | Farm Cheese | |
| | '000 lb. | '000 lb. | '000 lb. | '000 lb. | '000 lb. | '000 lb. | '000 lb. | |
| CANADA | 1946 | 926,003 | 225,609 | 20,545 | 24,287 | 11,474 | 102,342 | 691 |
| | 1947 | 942,514 | 229,966 | 21,517 | 29,192 | 10,904 | 105,763 | 691 |
| | 1948 | 902,936 | 209,652 | 12,042 | 27,756 | 14,590 | 114,690 | 680 |
| P.E.I. | 1946 | 8,841 | 4,030 | 100 | - | 28 | 656 | 1 |
| | 1947 | 8,105 | 3,280 | 123 | - | 43 | 586 | 1 |
| | 1948 | 8,192 | 3,444 | 89 | - | 57 | 609 | 1 |
| N.S. | 1946 | 32,247 | 10,637 | - | 904 | 757 | 3,819 | 26 |
| | 1947 | 32,001 | 10,122 | - | 704 | 643 | 4,007 | 26 |
| | 1948 | 29,477 | 9,255 | - | 521 | 815 | 3,397 | 26 |
| N.B. | 1946 | 26,443 | 5,764 | 189 | - | 314 | 8,177 | 3 |
| | 1947 | 27,047 | 5,670 | 512 | - | 300 | 8,833 | 3 |
| | 1948 | 26,118 | 4,171 | 100 | - | 400 | 10,590 | 4 |
| Que. | 1946 | 190,646 | 22,165 | 5,615 | 4,970 | 1,943 | 13,191 | 27 |
| | 1947 | 199,343 | 30,904 | 5,203 | 4,944 | 1,815 | 13,847 | 27 |
| | 1948 | 187,361 | 24,766 | 1,418 | 4,370 | 2,415 | 14,808 | 27 |
| Ont. | 1946 | 317,689 | 75,398 | 11,073 | 14,301 | 5,102 | 12,301 | 144 |
| | 1947 | 331,126 | 83,833 | 12,053 | 19,456 | 5,059 | 12,793 | 144 |
| | 1948 | 306,586 | 71,766 | 7,392 | 17,558 | 5,916 | 14,574 | 142 |
| Man. | 1946 | 69,037 | 24,391 | 610 | - | 800 | 9,770 | 111 |
| | 1947 | 71,180 | 25,351 | 1,104 | - | 729 | 10,075 | 111 |
| | 1948 | 68,943 | 23,828 | 802 | - | 929 | 10,684 | 109 |
| Sask. | 1946 | 119,690 | 39,386 | 44 | - | 629 | 31,092 | 134 |
| | 1947 | 118,183 | 35,122 | 67 | - | 514 | 31,724 | 134 |
| | 1948 | 115,819 | 33,997 | - | - | 1,143 | 32,685 | 131 |
| Alta. | 1946 | 112,775 | 35,028 | 2,301 | 1,747 | 786 | 20,642 | 212 |
| | 1947 | 108,614 | 30,600 | 1,942 | 1,712 | 729 | 21,157 | 212 |
| | 1948 | 112,120 | 34,114 | 1,829 | 1,800 | 1,286 | 24,320 | 207 |
| B.C. | 1946 | 48,635 | 8,810 | 613 | 2,365 | 1,115 | 2,694 | 33 |
| | 1947 | 46,915 | 5,084 | 513 | 2,376 | 1,072 | 2,741 | 33 |
| | 1948 | 48,320 | 4,311 | 412 | 3,507 | 1,629 | 3,023 | 33 |

Table 8 - MILK PRODUCTION AND UTILIZATION IN CANADA, BY PROVINCES,

January 1946, 1947 and 1948

Section B

| | | Milk Otherwise Used | | | | Recapitulation | | |
|--------|------|---------------------|-----------------|--------------------|------------------|--------------------|-----------------|----------------|
| | | Fluid Milk | Fluid (1) Cream | Farm-Home Consumed | Fed to Livestock | Factory Production | Farm Production | Otherwise Used |
| | | '000 lb. | '000 lb. | '000 lb. | '000 lb. | '000 lb. | '000 lb. | |
| CANADA | 1946 | 307,363 | 52,604 | 139,006 | 42,082 | 281,915 | 103,033 | 541,055 |
| | 1947 | 306,390 | 51,882 | 142,789 | 43,420 | 291,579 | 106,454 | 544,481 |
| | 1948 | 290,611 | 57,135 | 153,497 | 42,283 | 264,040 | 115,370 | 523,526 |
| P.E.I. | 1946 | 1,720 | 123 | 1,869 | 314 | 4,158 | 657 | 4,026 |
| | 1947 | 1,759 | 102 | 1,888 | 323 | 3,446 | 587 | 4,072 |
| | 1948 | 1,801 | 175 | 1,699 | 317 | 3,590 | 610 | 3,992 |
| N.S. | 1946 | 11,290 | 695 | 3,483 | 636 | 12,298 | 3,845 | 16,104 |
| | 1947 | 11,333 | 892 | 3,622 | 652 | 11,469 | 4,033 | 16,499 |
| | 1948 | 10,211 | 1,024 | 3,586 | 642 | 10,591 | 3,423 | 15,463 |
| N.B. | 1946 | 6,522 | 416 | 4,444 | 614 | 6,267 | 8,180 | 11,996 |
| | 1947 | 6,169 | 422 | 4,533 | 605 | 6,482 | 8,836 | 11,729 |
| | 1948 | 5,577 | 540 | 4,125 | 611 | 4,671 | 10,594 | 10,853 |
| Que. | 1946 | 94,005 | 16,356 | 29,021 | 3,353 | 34,693 | 13,218 | 142,735 |
| | 1947 | 94,835 | 14,422 | 29,892 | 3,454 | 42,866 | 13,874 | 142,603 |
| | 1948 | 92,464 | 16,081 | 27,800 | 3,212 | 32,969 | 14,835 | 139,557 |
| Ont. | 1946 | 128,728 | 15,392 | 41,668 | 13,582 | 105,874 | 12,445 | 199,370 |
| | 1947 | 126,027 | 15,211 | 42,085 | 14,465 | 120,401 | 12,937 | 197,788 |
| | 1948 | 117,583 | 17,919 | 39,560 | 14,176 | 102,633 | 14,716 | 189,238 |
| Man. | 1946 | 12,585 | 3,881 | 12,036 | 4,853 | 25,801 | 9,881 | 33,355 |
| | 1947 | 12,783 | 3,848 | 12,277 | 4,902 | 27,184 | 10,186 | 33,810 |
| | 1948 | 11,837 | 3,821 | 11,786 | 5,147 | 25,559 | 10,793 | 32,591 |
| Sask. | 1946 | 12,001 | 3,512 | 26,574 | 6,318 | 40,059 | 31,226 | 48,405 |
| | 1947 | 12,204 | 3,774 | 28,168 | 6,476 | 35,703 | 31,858 | 50,622 |
| | 1948 | 11,813 | 3,853 | 25,915 | 6,282 | 35,140 | 32,816 | 47,863 |
| Alta. | 1946 | 19,087 | 5,178 | 16,863 | 10,931 | 39,862 | 20,854 | 52,059 |
| | 1947 | 18,355 | 5,667 | 17,200 | 11,040 | 34,983 | 21,369 | 52,262 |
| | 1948 | 16,721 | 5,469 | 15,996 | 10,378 | 39,029 | 24,527 | 48,564 |
| B.C. | 1946 | 21,425 | 7,051 | 3,048 | 1,481 | 12,903 | 2,727 | 33,005 |
| | 1947 | 22,925 | 7,544 | 3,124 | 1,503 | 9,045 | 2,774 | 35,096 |
| | 1948 | 22,604 | 8,253 | 3,030 | 1,513 | 9,859 | 3,056 | 35,405 |

(1) Cream expressed as Milk;

Table 9 - UTILIZATION OF MILK IN PERCENTAGES OF TOTAL MILK PRODUCTION

In Canada, by Provinces, January 1947 and 1948

| Province | Year | Sold for Distribution in Manufacture | | | | Used on Farms | |
|-------------------|------|--------------------------------------|-------------|----------------|------------------------|---------------|----------------|
| | | Creamery Butter | Fluid Sales | Factory Cheese | Conc. Milk & Ice Cream | Dairy Butter | Other Purposes |
| | | % | % | % | % | % | % |
| CANADA | 1947 | 24.4 | 38.0 | 2.3 | 4.3 | 11.2 | 19.8 |
| | 1948 | 23.2 | 38.5 | 1.3 | 4.7 | 12.7 | 19.6 |
| Prince Edward Is. | 1947 | 40.5 | 23.0 | 1.5 | 0.5 | 7.2 | 27.3 |
| | 1948 | 42.0 | 24.1 | 1.1 | 0.7 | 7.5 | 24.6 |
| Nova Scotia | 1947 | 31.6 | 38.2 | - | 4.2 | 12.5 | 13.5 |
| | 1948 | 31.4 | 38.1 | - | 4.6 | 11.5 | 14.4 |
| New Brunswick | 1947 | 21.0 | 24.4 | 1.9 | 1.1 | 32.6 | 19.0 |
| | 1948 | 16.0 | 23.4 | 0.4 | 1.5 | 40.6 | 18.1 |
| Quebec | 1947 | 15.5 | 54.8 | 2.6 | 3.4 | 7.0 | 16.7 |
| | 1948 | 13.2 | 57.9 | 0.8 | 3.6 | 7.9 | 16.6 |
| Ontario | 1947 | 25.3 | 42.7 | 3.6 | 7.4 | 3.9 | 17.1 |
| | 1948 | 23.4 | 44.2 | 2.4 | 7.7 | 4.8 | 17.5 |
| Manitoba | 1947 | 35.6 | 23.4 | 1.6 | 1.0 | 14.1 | 24.3 |
| | 1948 | 34.6 | 22.7 | 1.2 | 1.3 | 15.5 | 24.7 |
| Saskatchewan | 1947 | 29.7 | 13.5 | 0.1 | 0.4 | 26.9 | 29.4 |
| | 1948 | 29.4 | 13.5 | - | 1.0 | 28.2 | 27.9 |
| Alberta | 1947 | 28.2 | 22.1 | 1.8 | 2.2 | 19.5 | 26.2 |
| | 1948 | 30.4 | 19.8 | 1.6 | 2.8 | 21.7 | 23.7 |
| British Columbia | 1947 | 10.8 | 65.0 | 1.1 | 7.4 | 5.8 | 9.9 |
| | 1948 | 8.9 | 63.9 | 0.9 | 10.6 | 6.3 | 9.4 |

TABLE 10 - FARM INCOME FROM DAIRYING AND PRICE AVERAGES PER HUNDRED POUNDS OF MILK
By Provinces and by Products, January 1947 and 1948

| | Income | | Price | | Income | | Price | |
|--------|-------------------------|---------|-------|-------|-----------------------------|---------|-------|------|
| | 1947 | 1948 | 1947 | 1948 | 1947 | 1948 | 1947 | 1948 |
| | Total Income | | | | (1) Fluid Sales (milk only) | | | |
| | \$ '000 | \$ '000 | \$ | \$ | \$ '000 | \$ '000 | \$ | \$ |
| Canada | 17,082 | 21,153 | 2.88 | 3.16 | 10,322 | 11,370 | 3.37 | 3.91 |
| P.E.I. | 118 | 168 | 2.19 | 2.79 | 51 | 61 | 2.90 | 3.39 |
| N.S. | 644 | 756 | 2.55 | 3.13 | 391 | 395 | 3.45 | 3.87 |
| N.B. | 359 | 544 | 2.35 | 3.21 | 195 | 228 | 3.15 | 4.10 |
| Que. | 4,396 | 4,850 | 2.77 | 3.29 | 3,215 | 3,440 | 3.39 | 3.72 |
| Ont. | 7,056 | 8,250 | 2.68 | 3.34 | 4,385 | 4,797 | 3.48 | 4.08 |
| Man. | 931 | 1,238 | 2.13 | 2.79 | 373 | 446 | 2.92 | 3.77 |
| Sask. | 1,111 | 1,783 | 2.00 | 2.65 | 375 | 435 | 3.07 | 3.68 |
| Alta. | 1,311 | 2,140 | 2.16 | 2.82 | 580 | 659 | 3.16 | 3.94 |
| B.C. | 1,137 | 1,434 | 2.81 | 3.44 | 757 | 909 | 3.30 | 4.02 |
| | (2) Fluid Cream | | | | (3) Milk for Concentration | | | |
| Canada | 1,061 | 1,400 | 2.04 | 2.45 | 681 | 896 | 2.33 | 3.23 |
| P.E.I. | 2 | 4 | 2.01 | 2.56 | - | - | - | - |
| N.S. | 13 | 25 | 1.52 | 2.41 | 15 | 14 | 2.08 | 2.73 |
| N.B. | 8 | 14 | 1.96 | 2.60 | - | - | - | - |
| Que. | 255 | 357 | 1.77 | 2.22 | 126 | 140 | 2.55 | 3.21 |
| Ont. | 347 | 489 | 2.28 | 2.73 | 436 | 552 | 2.24 | 3.11 |
| Man. | 93 | 91 | 2.40 | 2.37 | - | - | - | - |
| Sask. | 64 | 87 | 1.71 | 2.26 | - | - | - | - |
| Alta. | 102 | 135 | 1.80 | 2.46 | 36 | 49 | 2.12 | 2.73 |
| B.C. | 177 | 198 | 2.35 | 2.40 | 68 | 141 | 2.88 | 4.00 |
| | (4) Cheese Milk | | | | (5) Ice Cream | | | |
| Canada | 462 | 357 | 2.15 | 2.97 | 250 | 418 | 2.11 | 2.87 |
| P.E.I. | 3 | 2 | 2.07 | 2.35 | 1 | 2 | 2.07 | 2.58 |
| N.S. | - | - | - | - | 14 | 23 | 2.16 | 2.86 |
| N.B. | 10 | 3 | 1.94 | 2.84 | 6 | 11 | 2.01 | 2.81 |
| Que. | 106 | 42 | 2.03 | 2.94 | 43 | 75 | 2.36 | 3.12 |
| Ont. | 270 | 227 | 2.24 | 3.08 | 106 | 180 | 2.10 | 3.04 |
| Man. | 22 | 21 | 1.98 | 2.65 | 13 | 23 | 1.83 | 2.42 |
| Sask. | 1 | - | 2.04 | - | 9 | 28 | 1.91 | 2.49 |
| Alta. | 39 | 49 | 2.02 | 2.68 | 15 | 35 | 1.99 | 2.76 |
| B.C. | 11 | 13 | 2.07 | 3.13 | 23 | 41 | 2.16 | 2.51 |
| | (6) Creamery Butter-Fat | | | | (7) Dairy Butter | | | |
| Canada | 4,006 | 5,126 | 49.8 | 69.9 | 320 | 1,536 | 41.8 | 63.7 |
| P.E.I. | 59 | 86 | 51.3 | 71.4 | 2 | 3 | 42.0 | 64.0 |
| N.S. | 181 | 233 | 51.1 | 72.0 | 30 | 66 | 44.0 | 67.0 |
| N.B. | 100 | 107 | 50.7 | 73.5 | 40 | 181 | 43.0 | 69.0 |
| Que. | 552 | 629 | 51.0 | 72.5 | 99 | 167 | 42.0 | 66.0 |
| Ont. | 1,487 | 1,755 | 50.7 | 69.9 | 24 | 250 | 43.0 | 67.0 |
| Man. | 434 | 575 | 48.9 | 68.9 | 16 | 82 | 41.0 | 60.0 |
| Sask. | 597 | 814 | 48.6 | 68.4 | 65 | 419 | 40.0 | 60.0 |
| Alta. | 510 | 821 | 47.65 | 68.75 | 29 | 392 | 40.0 | 63.0 |
| B.C. | 86 | 106 | 48.4 | 70.4 | 15 | 26 | 44.0 | 66.0 |

STATISTICS CANADA LIBRARY
BIBLIOTHÈQUE STATISTIQUE CANADA



1010779657