

23-001

c.2

Published by Authority of the Rt. Hon. C. D. Howe, M.P., Minister of Trade and Commerce

DOMINION BUREAU OF STATISTICS



# MONTHLY DAIRY REVIEW OF CANADA 1948

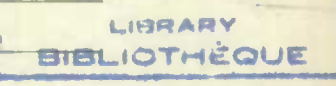
STATISTICS STATISTIQUE CANADA CANADA

Dominion Statistician:  
Director, Agricultural Division:  
In Charge of Dairy Statistics:

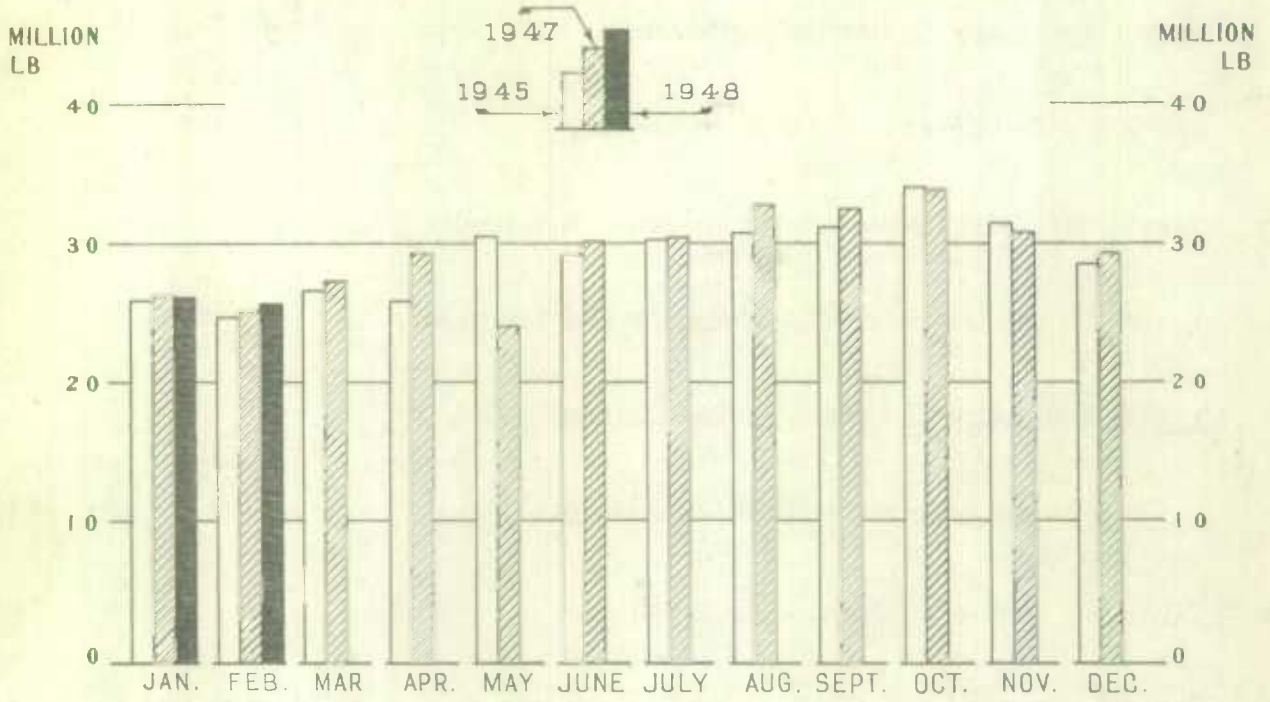
Herbert Marshall  
C. V. Parker  
F. H. Ferguson

APR 14 1948

Volume No. IX, Report No. 3 (March) Published April 21, 1948.

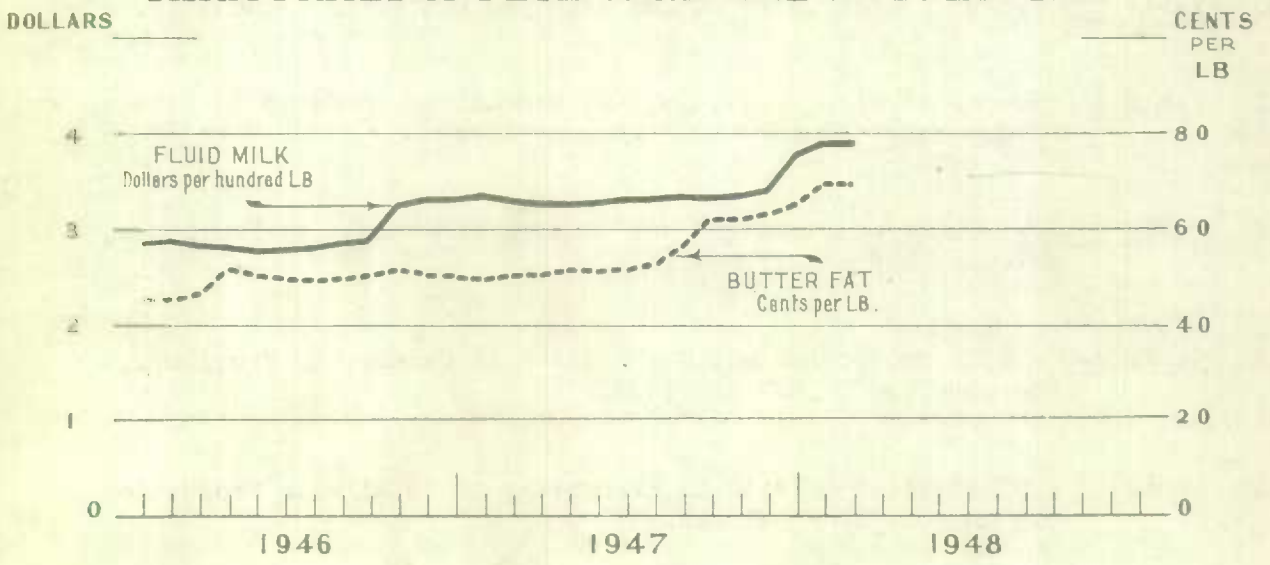


## DOMESTIC DISAPPEARANCE OF BUTTER\*



\* Includes Creamery, Dairy and whey Butter

## FARM PRICES OF FLUID MILK AND BUTTER FAT



Price: \$1.00 a year

## C O N T E N T S

- Page 1 Summary - The Dairy Position in Brief.
- Page 1 Text - The Butter Situation.
- Page 2 Table 1 - The Butter Position in Canada.
- Page 3 Text - The Dairy Situation in Canada.
- Page 4 Table 2 - The Cheese Position in Canada.
- Page 5 Text - The Dairy Situation in Canada (Continued).
- Page 6 Table 3 - Concentrated Milk Products and Ice Cream.
- Page 7 Text - The Dairy Situation in Canada (Concluded).
- Page 8 Table 4 - Concentrated Whole Milk Products.
- Page 9 Table 5 - Concentrated Milk By-Products.
- Page 10 Table 6 - Production of Milk per Cow and Percentages of Cows Milking.
- Page 10 Table 7 - Production of Dairy Butter and Whey Butter in Canada.
- Page 11 Table 8 - Number of Milch Cows, Heifers and Calves on Farms in Canada, by Provinces, December 1, 1946 and 1947.
- Page 12 Table 9-A - Milk Production and Utilization in Canada, by Provinces, February 1946, 1947 and 1948.
- Page 13 Table 9-B - Milk Production and Utilization in Canada, by Provinces, February 1946, 1947 and 1948.
- Page 14 Table 10 - Utilization of Milk in Percentage of Total Milk Production, in Canada, by Provinces.
- Page 15 Table 11 - Farm Income from Dairying and Average Prices per Hundred Pounds of Milk.



## THE DAIRY POSITION IN BRIEF

The production of creamery butter in the month of March was less than that of the same month of the preceding year by 7 per cent.

The total butter supply in the month of March was  $15\frac{1}{4}$  per cent less than that of the same month of 1947, while the domestic disappearance increased  $3\frac{3}{4}$  per cent.

Wholesale butter prices at Montreal quoted by the Canadian Commodity Exchange averaged  $67\frac{1}{2}$  cents per pound in March as against 40 cents in the same month last year. Cheese prices averaged  $34\frac{3}{4}$  cents as compared with 23 cents in March, 1947.

The total farm milk production of Canada in the month of February was 2.4 per cent less than that of February, 1947. All provinces with the exception of Alberta and British Columbia contributed to the reduction.

Fluid sales in the month of February were approximately 3 million pounds less than those of the same month last year. Fluid milk declined 2.9 per cent while fluid cream on a milk basis increased 11.5 per cent. Sales of milk by provinces revealed decreases in all sections of the Dominion with the exception of Saskatchewan. Cream sales increased in all provinces.

Farm income from dairying in February was approximately 26.7 per cent greater than that recorded in the same month of the previous year. The average farm price of milk sold for all purposes was \$3.18 as against \$2.53 per hundred in the corresponding month of 1947.

Milk used in dairy factory production fell approximately 6.4 per cent below that of February, 1947. However, in two of the provinces, Alberta and British Columbia, the quantity used for this purpose was greater than that of the same month last year.

The total number of milch cows on farms continued to show a slight reduction as compared with last year.

Cold weather was general throughout the Dominion in March with heavy falls of snow in many sections. While there was no evidence of a general feed shortage, supplies were insufficient in some areas. Milk production in April is expected to fall slightly below that of the same month of the previous year.

## THE BUTTER SITUATION

Production: Creamery butter production in March reached a total of 11 million pounds, being 856 thousand pounds below the quantity produced in the corresponding month of the preceding year. The dairy butter make was approximately 6 million pounds, while whey butter fell to 31 thousand pounds. The creamery butter and whey butter make declined, while dairy butter production showed a 9 per cent increase over that of March, 1947.

Total Supply: The total supply of butter (creamery, dairy and whey), which is represented by stocks at beginning plus March production, amounted to approximately  $36\frac{1}{2}$  million pounds. This represented a decline of approximately  $6\frac{1}{2}$  million pounds in comparison with the total supply reported in March, 1947. This situation arises from a decline in the current make and smaller stock reserves.

Domestic Disappearance: The domestic disappearance of total butter in March was 28 million pounds as compared with  $27\frac{1}{4}$  million pounds a year ago and  $25\frac{3}{4}$  million pounds in the previous month. In pounds per capita, the March disappearance was 2.18 pounds in comparison with 2.01 pounds last month and 2.17 pounds in the same month last year. High prices have tended to check the upward movement in the domestic disappearance which was revealed in the late summer and autumn months of 1947.

Table 1. - THE BUTTER POSITION IN CANADA

March, and January - March, 1936 to 1948.

Year	Creamery Butter		Dairy butter 1/		Total Butter 2/	
	March	Jan.-Mar.	March	Jan.-Mar.	March	Jan.-Mar.
PRODUCTION						
	'000 lb.	'000 lb.	'000 lb.	'000 lb.	'000 lb.	'000 lb.
1936	9,518	26,980	9,138	24,645	18,705	51,741
1937	9,701	26,279	8,912	24,125	18,675	50,552
1938	10,162	26,142	8,587	23,345	18,810	49,634
1939	10,937	29,216	8,227	22,442	19,225	51,805
1940	10,535	30,153	7,937	21,669	18,541	51,986
1941	12,426	34,126	7,837	21,342	20,335	55,640
1942	11,740	31,804	7,402	20,213	19,235	52,239
1943	15,541	40,536	5,084	14,144	20,672	54,736
1944	14,167	36,029	5,268	14,302	19,497	50,478
1945	14,677	36,704	5,257	13,925	20,019	50,821
1946	11,804	30,113	5,420	14,380	17,278	44,624
1947	12,240	30,744	5,498	14,723	17,788	45,579
1948	11,384	28,410	5,999	16,015	17,414	44,497

DOMESTIC DISAPPEARANCE IN POUNDS PER CAPITA

1936	1.60	4.59	.84	2.27	2.45	6.88
1937	1.79	4.81	.81	2.20	2.61	7.03
1938	1.67	4.75	.77	2.10	2.45	6.87
1939	1.69	4.87	.74	2.02	2.44	6.91
1940	1.72	5.04	.70	1.90	2.43	6.97
1941	1.73	4.98	.69	1.88	2.43	6.88
1942	1.94	5.64	.65	1.77	2.60	7.44
1943	1.55	4.64	.44	1.24	2.00	5.89
1944	1.94	6.04	.45	1.24	2.40	7.31
1945	1.82	5.38	.45	1.20	2.28	6.60
1946	1.30	4.89	.44	1.17	1.75	6.09
1947	1.73	5.06	.44	1.17	2.17	6.24
1948.	1.71	4.98	.47	1.25	2.18	6.23

MARCH MAKE, 1936 to 1948, EXPRESSED AS INDEXES OF THE SAME MONTH IN 1939 and 1947 3/

	1939	1947	1939	1947	1939	1947
	%	%	%	%	%	%
1936	87.0	77.8	111.1	166.2	97.3	105.1
1937	88.7	79.3	108.3	162.1	97.1	105.0
1938	92.9	83.0	104.4	156.2	97.8	105.7
1939	100.0	89.3	100.0	149.6	100.0	108.1
1940	96.3	86.1	96.5	144.4	96.4	104.2
1941	113.6	101.5	95.3	142.5	105.8	114.3
1942	107.3	95.9	90.0	134.6	100.1	108.1
1943	142.1	127.0	61.8	92.5	107.5	116.2
1944	129.5	115.7	64.0	95.8	101.4	109.6
1945	134.2	119.9	63.9	95.6	104.1	112.5
1946	107.9	96.4	65.9	98.6	89.9	97.1
1947	111.9	100.0	65.8	100.0	92.5	100.0
1948	104.1	93.0	72.9	109.1	90.6	97.9

1/ Data for March, 1948 are preliminary; revision for February appear on Table 7.

2/ Includes Whey Butter amounting to 50,100 pounds in March, 1947 and 30,600 pounds in March, 1948.

3/ Note the base index in each column is shown as 100.



### SUPPLIES OF OTHER FACTORY PRODUCTS

Cheddar Cheese Production: The March make of cheddar cheese fell to slightly over  $1\frac{3}{4}$  million pounds, almost  $\frac{3}{4}$  million pounds less than the amount made in the same month of 1947. It may be noted from Table 2 that the March make was the lowest output for that month during the last seven years.

Concentrated Milk Products: The total quantity of concentrated milk products manufactured in March was  $18\frac{3}{4}$  million pounds. Compared with the same month of the previous year the March production represented a decline of slightly over  $3\frac{1}{4}$  million pounds. The output of concentrated whole milk products was less than that of the preceding March by  $3\frac{1}{4}$  million pounds. Milk by-products registered a reduction of 89 thousand pounds. The domestic disappearance of concentrated whole milk products per capita (see Table 3), was .98 pounds in March as against 1.11 pounds in the same month last year. The domestic disappearance of milk by-products for March, 1947 and 1948, amounted to .27 and .25 pounds, respectively.

Ice Cream: The quantity of ice cream manufactured in March was approximately  $1\frac{1}{2}$  million gallons, or 693 thousand gallons more than that manufactured in the same month a year ago.

### MILK PRODUCTION AND UTILIZATION

Milk Production: The total milk production of Canada in the month of February is estimated at 870,498,000 pounds, representing a decrease of 21 million pounds as compared with February, 1947.

Fluid Sales: February sales of milk and cream (the latter expressed as milk), amounted to 328,688,000 pounds, 84 per cent of which was sold in the form of milk and 16 per cent in the form of cream. The February sales were approximately 3 million pounds less than those of the same month of the previous year. Milk sales declined  $8\frac{1}{4}$  million pounds, while cream sales expressed as milk were  $5\frac{1}{3}$  million pounds greater than those of February, 1947.

Farm Income: Farm income from the sale of dairy products is estimated at \$19,593,000 in February, 1948, in comparison with \$15,494,000 in the same month of the previous year. Higher prices per unit were largely responsible for this advance, the weighted average being \$3.18 per hundred pounds of milk as compared with \$2.53 in February, 1947. The upward movement in prices applied to all products. On account of the increased demand for butter, churning cream values moved up to higher levels; so that the prices received for both creamery butter-fat and dairy butter indicated marked increases over those of the same month of the previous year. It will be noted from Table 10 that the income from the sale of dairy butter was approximately three and one-half times greater than last year. This was due to a substantial increase in the percentage of butter sold off farms as well as to the increase in price. Fluid prices advanced to a lesser degree than the prices of manufactured products.

### PRODUCTION CONDITIONS ON FARMS, BY PROVINCES

The weather was clear and cold in most sections of Canada during March with heavy snowfall and considerably more sunshine than that reported in the same month of the previous year. The average precipitation, however, was about the same as a year ago. It was inclined to be somewhat cool and cloudy in British Columbia with quite heavy precipitation in the coastal regions. There was no evidence of a general feed shortage, but smaller supplies of grain on farms in Eastern Canada and the prolonged winter period in the Prairies has made it necessary for farmers to feed less liberally than usual. Snowbound roads in the West interfered with the movement of feed supplies and the delivery of milk and cream to market.





## PRODUCTION CONDITIONS ON FARMS

Prince Edward Island: Temperatures were below normal and considerable quantities of snow fell during the month. Feed supplies were reported to be somewhat scarce, particularly grains, roots and hay. Clover appears to have come through the winter in fair condition. Many farmers sold off stock early in the fall owing to higher beef prices; and combined with the high cost of mill feeds, this has tended to reduce milk production to a lower level.

Nova Scotia: The early part of March was inclined to be cold, but turned mild later in the month. There was very little rain, but some snow. Owing to a lack of feed, it is expected that fewer cows will freshen this spring; and for the same reason, cows may go on grass in poorer condition than they did a year ago. Heavy disposals of cattle have had an unfavourable result, and very little increase in milk production is anticipated.

New Brunswick: A heavy fall of snow was recorded about the end of the month. In Southern areas eight to ten inches were recorded. Hay is scarce and farmers having any surplus are receiving about \$25.00 a ton. However, the supply of concentrates was somewhat better than a year ago. A shortage of moisture during the winter reduced the water level, but this situation has been corrected with the increased moisture resulting from the spring-time thaw. Cows are reported to be in fair condition, but farmers have fewer heifers to introduce into dairy herds. Milk production in April is expected to be below that of April, 1947.

Quebec: Snow disappeared quite rapidly during the last half of March and market roads are in fairly good condition for this season. Feed supplies appear to be adequate in most sections of the Province although the quality is not equal to that of the previous year. The early spring break-up relieved the water shortage which had become rather serious during the previous month. Calving is later than usual this year and owing to high prices of mill feeds and concentrates, dairy herds are not in particularly good condition. Until pastures come into full use, it is expected that milk production will fall somewhat below that of the same period a year ago.

Ontario: Weather conditions in March were quite favourable for dairying. There were a few snow storms, but followed by warm weather fields were cleared by the end of the month. Grains are scarce and farmers are not feeding very liberally, a situation which will tend to delay the seasonal upturn of milk production. With a few exceptions, the soil is fairly well supplied with moisture. New clover shoots do not appear to have suffered from frost injuries. There are fewer cows on farms and dairy herds are not in quite as good condition as usual. Freshenings appear to be slightly below those of a year ago and milk production in April is not expected to equal that of April, 1947.

Manitoba: Cold weather prevailed throughout the month with lower temperatures than those of a year ago, but more sunshine. Feed supplies are being exhausted and heavy storms have blocked the roads making it difficult for farmers to maintain regular deliveries to dairy factories. Moisture conditions promise to be satisfactory, but owing to the prolonged winter period, there is likely to be a delay in placing cows on pasture. This situation combined with a reduction in cow numbers and less feed at higher prices is expected to reduce the milk production in April somewhat below that of the previous year.

Table 3 - CONCENTRATED MILK PRODUCTS AND ICE CREAM  
 Production and Domestic Disappearance in Canada.  
 March, and January - March, 1936 to 1948.

Year	Whole Milk Products		Milk By-Products		Ice Cream	
	March	Jan.-Mar.	March	Jan.-Mar.	March	Jan.-Mar.
PRODUCTION						
	'000 lb.	'000 lb.	'000 lb.	'000 lb.	'000 gal.	'000 gal.
1936	5,402	12,633	1,607	4,730	-	-
1937	7,026	17,223	1,867	4,986	-	-
1938	9,901	23,349	2,064	5,227	-	-
1939	7,480	16,936	2,303	6,243	533	1,327
1940	10,051	25,305	2,390	6,265	652	1,623
1941	13,149	33,454	2,504	6,467	840	2,084
1942	14,743	32,916	2,574	6,604	902	2,220
1943	15,459	34,925	2,359	5,815	1,026	2,344
1944	14,534	33,481	2,450	5,935	956	2,577
1945	18,020	40,840	3,345	8,038	865	2,429
1946	17,876	36,996	3,313	7,651	754	2,219
1947	18,027	38,951	3,933	10,073	720	2,113
1948	14,841	35,991	3,844	8,677	1,413	3,439

DOMESTIC DISAPPEARANCE IN POUNDS PER CAPITA

1936	.44	1.26	.18	.50	-	-
1937	.55	1.63	.16	.47	-	-
1938	.67	1.33	.18	.48	-	-
1939	.67	2.02	.30	.68	.05	.12
1940	.58	1.94	.20	.70	.06	.15
1941	.92	2.34	.25	.74	.07	.18
1942	1.01	2.88	.21	.63	.08	.19
1943	1.03	2.95	.21	.60	.09	.20
1944	.86	2.46	.23	.61	.08	.22
1945	.33	3.47	.24	.70	.07	.21
1946	1.01	3.27	.23	.68	.06	.18
1947	1.11	3.19	.27	.79	.06	.17
1948	.98	2.83	.25	.65	.11	.27

MARCH MAKE, 1936 TO 1948, EXPRESSED AS INDEXES OF THE SAME MONTH IN 1939 AND 1947 1/

	1939		1947		1939		1947	
	%	%	%	%	%	%	%	
1936	72.2	30.0	69.8	40.9	-	-	-	-
1937	93.9	39.0	81.1	47.5	-	-	-	-
1938	132.4	54.9	89.6	52.5	-	-	-	-
1939	100.0	41.5	100.0	58.5	100.0	74.0	-	-
1940	134.4	55.7	103.8	60.8	122.3	90.5	-	-
1941	175.8	72.9	108.7	63.7	157.6	116.7	-	-
1942	197.1	81.8	111.8	65.4	169.2	125.3	-	-
1943	206.7	85.7	102.4	60.0	192.5	142.5	-	-
1944	194.3	80.1	106.4	62.3	179.4	132.8	-	-
1945	240.9	99.9	145.2	85.0	162.3	120.1	-	-
1946	239.0	99.2	143.8	84.2	141.5	104.7	-	-
1947	241.0	100.0	170.8	100.0	135.1	100.0	-	-
1948	198.4	82.3	166.9	97.7	265.1	196.3	-	-

1/ Note that base index in each column is shown as 100.



Saskatchewan: Unusually cold weather with bright sunshine prevailed during March. Heavy falls of snow blocked the roads and delayed deliveries to dairy factories for a few days during the latter part of the month. The long winter has added materially to the cost of maintaining dairy cattle and farmers have found it necessary to exercise a special care in the use of available feed supplies. Soil moisture conditions were reported to be quite favourable, but the spring pasture season is expected to be quite late. Cows are in fair condition, and with a reduction in the number of heifers and fewer cows to calf, it is scarcely likely that milk production during the early spring period will be as great as a year ago.

Alberta: Extremely variable weather prevailed in this Province during the month of March with several heavy storms which blocked the roads for a considerable time. Temperatures averaged 12 to 15 degrees below those of a year ago, but there was a good deal of sunshine. Farmers experienced a two-fold problem, namely, a feed shortage in some areas and difficulty in transporting feed from one place to another on account of blocked roads. Moisture conditions are highly favourable and there should be a good growth of grass as soon as warm weather arrives. However, it is possible that the opening of spring will be somewhat delayed. Milk cows are in fair condition, but with fewer cows and heifers on farms there is little hope of milk production being maintained at the 1947 level. The high price of feed grains is another factor of importance. Observers believe that this will tend to detract farmers from dairying enterprises.

British Columbia: Cold, backward weather has delayed the early spring growth in this Province. Farmers have a fair supply of roughage, but a feed shortage may develop before the pasture season commences. Moisture conditions are excellent as the result of heavy precipitation, but warm weather is needed to start pastures. Dairy herds came through the winter in good condition. Freshenings are below those of a year ago and there seems to be insufficient heifers on farms for replacement purposes. There is a good demand for milch cows and some shipments have been made to outside points. For the reasons indicated, milk production in April is expected to be lower than that of the same month in 1947; although a general improvement in the labour situation will tend to help the Dairy Industry.

Table 4 - CONCENTRATED WHOLE MILK PRODUCTS

Production in Canada, Exports and Imports of Principal Products  
March, and January - March, 1936 to 1948.

Year	Evaporated Whole Milk		Condensed Whole Milk		Whole Milk Powder	
	March	Jan.-Mar.	March	Jan.-Mar.	March	Jan.-Mar.
PRODUCTION						
	'000 lb.	'000 lb.	'000 lb.	'000 lb.	'000 lb.	'000 lb.
1936	4,485	10,270	679	1,831	154	274
1937	5,206	13,490	1,301	2,560	409	834
1938	8,320	19,505	872	2,049	565	1,371
1939	6,347	13,641	472	1,610	439	1,011
1940	8,818	22,107	574	1,455	506	1,275
1941	11,153	28,447	1,262	3,262	643	1,455
1942	12,632	27,549	1,186	3,048	820	1,994
1943	12,823	27,917	1,564	4,391	1,057	2,489
1944	11,224	26,015	1,988	4,346	1,281	2,934
1945	14,333	31,315	2,179	5,800	1,418	3,316
1946	14,399	29,707	2,035	4,419	1,227	2,375
1947	15,097	30,827	1,592	4,571	1,178	3,048
1948	11,906	28,935	1,436	3,764	1,145	2,577
EXPORTS						
1936	833	2,048	171	307	433	1,382
1937	559	2,021	571	860	220	615
1938	1,389	4,227	267	811	326	989
1939	1,907	3,038	220	409	492	1,307
1940	2,049	4,484	71	797	424	1,133
1941	3,628	12,446	643	2,234	235	989
1942	1,540	9,912	1,040	2,044	84	402
1943	900	4,360	1,092	4,146	135	542
1944	1,069	4,988	1,088	2,984	59	191
1945	1,515	13,006	891	3,600	249	445
1946	469	5,014	920	2,323	249	655
1947	545	1,966	849	2,980	147	359
1948	1,139	2,455	750	2,845	288	913
	TOTAL SUPPLY	STOCKS, APR.1	TOTAL SUPPLY	STOCKS, APR.1	IMPORTS	
1936	9,817	4,511	1,210	589	10	74
1937	12,165	6,288	1,698	633	91	189
1938	15,774	7,817	1,217	352	147	366
1939	14,407	5,835	1,244	625	(1)	8
1940	17,501	9,479	967	469	1	2
1941	23,856	11,013	1,734	442	179	230
1942	22,847	11,075	2,515	802	(1)	18
1943	21,411	9,949	2,072	760	-	1
1944	20,129	10,670	3,114	1,725	-	1
1945	28,682	26,305	5,136	1,991	1	2
1946	24,130	12,893	3,347	1,576	-	1
1947	29,180	16,996	3,695	1,838	-	1
1948	15,880	3,472 (3)	3,344	1,479	(2)	(2)

Note - Supply data which appear in the first and third columns includes stocks at the beginning of the month, plus production and imports during the month. (1) Less than 500 lbs. (2) Not available on date of publication. (3) Stocks in the hands of wholesalers not included in data for April 1, 1948.



Table 5. - CONCENTRATED MILK BY-PRODUCTS

Production in Canada, Exports and Imports of Principal Products  
March, and January - March, 1936 to 1948.

Year	Skimmilk Powder		Condensed Skimmilk		Casein	
	March	Jan.-Mar.	March	Jan.-Mar.	March	Jan.-Mar.
<b>PRODUCTION</b>						
	'000 lb.	'000 lb.	'000 lb.	'000 lb.	'000 lb.	'000 lb.
1936	1,062	3,024	254	962	60	141
1937	1,067	2,977	381	998	139	303
1938	1,333	3,348	394	951	48	120
1939	1,708	4,551	192	507	121	326
1940	1,729	4,526	342	865	55	134
1941	1,782	4,532	344	967	87	171
1942	1,734	4,278	446	1,305	128	290
1943	1,411	3,512	329	766	123	274
1944	1,520	3,583	295	666	71	166
1945	2,370	5,498	346	839	139	352
1946	2,498	5,546	245	555	88	201
1947	2,773	6,483	383	964	207	556
1948	2,511	5,196	473	1,118	93	286
<b>EXPORTS</b>						
1936	145	461	-	-	2	31
1937	73	205	-	-	6	23
1938	109	330	-	-	42	63
1939	302	848	-	-	61	137
1940	23	126	-	-	19	364
1941	123	147	-	-	23	92
1942	50	110	-	-	122	227
1943	126	169	-	-	11	23
1944	-	-	-	-	132	417
1945	200	200	-	-	(3)	10
1946	713	847	-	-	-	81
1947	275	1,096	-	-	1	91
1948	563	2,330	-	-	(2)	(2)
<b>IMPORTS (1)</b>						
1936					2	31
1937					6	23
1938					42	63
1939					61	137
1940					19	364
1941					23	92
1942					122	227
1943					11	23
1944					132	417
1945					(3)	10
1946					-	81
1947					1	91
1948					(2)	(2)
<b>DOMESTIC DISAPPEARANCE IN POUNDS PER CAPITA</b>						
1936	.13	.30	.02	.11	.01	.03
1937	.09	.29	.03	.09	.01	.03
1938	.11	.29	.03	.09	.01	.03
1939	.22	.50	.02	.04	.02	.05
1940	.14	.46	.02	.07	.01	.07
1941	.18	.53	.03	.08	.02	.04
1942	.14	.40	.03	.11	.02	.05
1943	.12	.36	.03	.07	.02	.05
1944	.14	.35	.02	.06	.03	.07
1945	.16	.47	.02	.07	.02	.04
1946	.15	.47	.02	.05	-	.03
1947	.16	.45	.02	.07	.04	.10
1948	.17	.42	.02	.07	-	-

- (1) Condensed skimmilk is not separately listed in import returns. Condensed milk designated as such shown in trade reports consists principally of condensed whole milk products.
- (2) Not available at date of publication.
- (3) Less than 500 lbs.

Table 6 - PRODUCTION OF MILK PER COW AND PERCENTAGES OF COWS MILKING

Based on Reports of Dairy Correspondents for February 1944 to 1948

Province	Milk Production per Cow in Pounds per Day						Percentages of Cows Milking					
	1944	1945	1946	1947	1948	Av.	1944	1945	1946	1947	1948	Av.
CANADA .....	13.3	14.1	14.2	14.7	14.3	14.1	57.6	64.0	63.7	64.0	65.2	62.9
Prince Edward Is.	15.0	14.3	14.3	14.1	12.3	14.0	67.0	70.2	67.8	68.8	64.9	67.7
Nova Scotia .....	13.2	15.8	17.0	16.0	15.3	15.5	77.0	78.7	81.0	75.1	77.4	77.8
New Brunswick ...	16.8	16.6	16.1	13.1	11.9	14.9	76.9	77.4	73.9	64.7	64.9	71.6
Quebec .....	10.6	10.4	10.7	9.7	8.9	10.1	39.4	48.6	49.0	49.0	47.9	46.8
Ontario .....	13.2	14.9	14.8	15.7	15.0	14.7	58.9	62.9	62.2	64.7	62.9	62.3
Manitoba .....	12.5	12.3	12.7	14.3	14.3	13.2	66.4	63.2	63.7	65.1	66.8	65.0
Saskatchewan .....	14.9	14.5	14.6	13.5	12.5	14.0	65.5	64.6	64.0	62.0	59.9	63.2
Alberta .....	17.0	15.9	15.1	16.4	16.2	16.1	66.4	64.0	61.8	61.3	69.8	64.7
British Columbia ..	17.2	17.4	17.6	16.3	17.3	17.2	80.8	77.9	78.7	75.8	77.9	78.2

Table 7 - PRODUCTION OF DAIRY BUTTER AND WHEY BUTTER IN CANADA  
by Provinces, February 1946, 1947 & 1948

Province	DAIRY BUTTER			WHEY BUTTER		
	1946	1947	1948	1946	1947	1948
	000 lb.	000 lb.	000 lb.	lb.	lb.	lb.
CANADA .....	4,592	4,711	5,121	35,200	28,700	19,300
Prince Edward Is. ..	33	36	38	-	-	-
Nova Scotia .....	170	180	185	-	-	-
New Brunswick .....	419	432	436	-	-	-
Quebec .....	372	376	414	2,000	2,000	-
Ontario .....	902	920	1,104	31,000	24,000	16,500
Manitoba .....	406	422	473	500	1,000	1,200
Saskatchewan .....	1,336	1,376	1,404	-	-	-
Alberta .....	848	861	947	x	x	x
British Columbia ...	106	108	120	x	x	x

x Since less than three firms reported whey butter production, figures are not shown.  
The quantity produced during the month is included, however, in the total for Canada.



Table 8 - NUMBER OF MILCH COWS, HEIFERS AND CALVES ON FARMS IN CANADA 1/  
By Provinces, December 1, 1946 and 1947

Province		Milch Cows		Heifers 2/		Calves (all classes)	
		No.	% Change	No.	% Change	No.	% Change
CANADA	1946	3,716,600		1,206,900		2,163,500	
	1947	3,666,600	(-) 1.3	1,175,400	(-) 2.6	2,161,500	(-) 0.1
P.E.I..	1946	43,700		11,900		21,700	
	1947	40,300	(-) 7.8	11,000	(-) 7.6	25,500	(+)17.5
N.S.	1946	101,500		27,200		42,500	
	1947	96,400	(-) 5.0	27,700	(+) 1.8	37,300	(-)12.2
N.B.	1946	107,100		22,300		39,200	
	1947	107,200	(+) 0.1	23,700	(+) 6.3	40,800	(+) 4.1
Que.	1946	1,136,400		212,100		311,800	
	1947	1,104,300	(-) 2.8	218,200	(+) 2.9	293,900	(-) 5.7
Ont.	1946	1,237,800		422,900		658,600	
	1947	1,256,400	(+) 1.5	425,000	(+) 0.5	687,300	(+) 4.4
Man.	1946	275,200		90,000		175,500	
	1947	264,600	(-) 3.9	88,700	(-) 1.4	181,900	(+) 3.6
Sask.	1946	397,700		175,400		337,800	
	1947	385,700	(-) 3.0	165,500	(-) 5.6	381,700	(+)13.0
Alta.	1946	320,000		198,900		486,800	
	1947	318,100	(-) 0.6	178,200	(-) 10.4	442,100	(-) 9.2
B.C.	1946	97,200		46,200		90,600	
	1947	93,600	(-) 3.7	37,400	(-) 19.0	71,000	(-)21.6

1/ Estimated on basis of Live Stock Survey of December 1.

2/ Both beef and dairy classes are represented in these data.

Table 9 - MILK PRODUCTION AND UTILIZATION IN CANADA, BY PROVINCES

February, 1946, 1947 and 1948

Section A

		Total Milk Production '000 lb.	Factory Production				Farm Production	
			Creamery Butter '000 lb.	Factory Cheese '000 lb.	Conc. Milk '000 lb.	Ice Cream '000 lb.	Dairy Butter '000 lb.	Farm Cheese '000 lb.
CANADA	1946	890,606	203,370	16,725	24,872	9,460	107,591	692
	1947	891,610	203,584	17,546	28,166	9,004	110,378	692
	1948	870,498	189,268	10,991	27,260	14,361	119,985	680
P.E.I.	1946	8,629	3,186	67	-	43	773	1
	1947	8,286	2,812	100	-	43	843	1
	1948	7,943	2,601	67	-	57	890	1
N.S.	1946	29,896	8,997	-	728	714	3,983	27
	1947	29,806	8,622	-	730	643	4,217	27
	1948	27,876	7,563	-	287	829	4,335	26
N.B.	1946	26,331	4,545	145	-	272	9,817	3
	1947	26,729	4,616	200	-	286	10,122	3
	1948	25,567	3,959	67	-	543	10,215	4
Que.	1946	168,525	12,769	3,264	4,415	1,801	8,716	27
	1947	169,199	16,471	2,885	3,965	1,615	8,810	27
	1948	163,213	13,777	1,000	3,466	2,129	9,700	27
Ont.	1946	309,891	68,415	9,971	14,970	3,858	21,134	144
	1947	319,607	77,202	10,472	18,648	3,744	21,556	144
	1948	308,993	69,915	6,769	16,515	6,073	25,867	142
Man.	1946	68,932	24,812	655	-	629	9,512	111
	1947	69,843	24,906	1,372	-	672	9,887	111
	1948	69,272	23,922	869	-	986	11,082	109
Sask.	1946	126,414	39,292	33	-	529	31,303	134
	1947	122,532	33,575	133	-	429	32,240	134
	1948	119,207	32,029	55	-	1,157	32,896	131
Alta.	1946	105,715	33,435	2,033	1,608	614	19,869	212
	1947	103,949	30,834	1,913	1,610	586	20,173	212
	1948	104,900	31,537	1,819	1,815	1,072	22,188	207
B.C.	1946	46,273	7,919	557	3,151	1,000	2,484	33
	1947	41,659	4,546	468	3,213	986	2,530	33
	1948	43,527	3,960	345	5,177	1,515	2,812	33



Table 9 -- MILK PRODUCTION AND UTILIZATION IN CANADA, BY PROVINCES

February, 1946, 1947 and 1948

Section B

		Milk Otherwise Used			Recapitulation			
		Fluid Milk	Fluid (1) Cream	Farm-Home Consumed	Fed to Livestock	Factory Production	Farm Production	Otherwise Used
		'000 lb.	'000 lb.	'000 lb.	'000 lb.	'000 lb.	'000 lb.	
CANADA	1946	290,492	50,748	126,756	59,900	254,427	108,283	527,896
	1947	285,230	46,382	129,846	60,782	258,300	111,070	522,240
	1948	276,973	51,715	120,483	58,782	241,880	120,665	507,953
P.E.I.	1946	1,847	143	2,070	499	3,296	774	4,559
	1947	1,805	165	2,008	509	2,955	844	4,487
	1948	1,801	237	1,787	502	2,725	891	4,327
N.S.	1946	9,997	627	3,997	826	10,439	4,010	15,447
	1947	10,002	834	3,917	814	9,995	4,244	15,567
	1948	9,132	984	3,917	798	8,684	4,361	14,831
N.B.	1946	5,795	429	3,896	1,429	4,962	9,820	11,549
	1947	5,584	453	3,993	1,472	5,102	10,125	11,502
	1948	5,165	622	3,594	1,398	4,569	10,219	10,779
Que.	1946	88,873	15,401	22,946	10,313	22,249	8,743	137,533
	1947	89,059	12,087	23,864	10,416	24,956	8,837	135,426
	1948	88,703	13,828	21,000	9,583	20,372	9,727	133,114
Ont.	1946	125,040	15,723	34,747	15,889	97,214	21,278	191,399
	1947	121,493	15,047	35,094	16,207	110,066	21,700	187,841
	1948	115,661	17,695	34,392	15,964	99,272	26,009	183,712
Man.	1946	11,578	3,833	11,431	6,371	26,096	9,623	33,213
	1947	11,320	3,475	11,602	6,498	26,950	9,998	32,895
	1948	11,184	3,586	10,906	6,628	25,777	11,191	32,304
Sask.	1946	11,275	3,402	29,251	11,195	39,854	31,437	55,123
	1947	11,169	3,361	30,128	11,363	34,137	32,374	56,021
	1948	11,370	3,546	27,115	10,908	33,241	33,027	52,939
Alta.	1946	16,550	4,562	16,071	10,761	37,690	20,081	47,944
	1947	16,096	4,805	16,875	10,842	34,946	20,385	48,618
	1948	15,517	4,920	15,525	10,300	36,243	22,395	46,262
B.C.	1946	19,537	6,628	2,347	2,617	12,627	2,517	31,129
	1947	18,702	6,155	2,365	2,661	9,213	2,563	29,883
	1948	18,440	6,297	2,247	2,701	10,997	2,845	29,685

(1) Cream expressed as Milk.

Table 10 - UTILIZATION OF MILK IN PERCENTAGES OF TOTAL MILK PRODUCTION

In Canada, by Provinces, February 1947 and 1948

Province	Year	Sold for Distribution and Used in Manufacture				Used on Farms	
		Creamery Butter	Fluid Sales	Factory Cheese	Conc. Milk & Ice Cream	Dairy Butter	Other Purposes
		%	%	%	%	%	%
CANADA	1947	22.8	37.2	2.0	4.2	12.4	21.4
	1948	21.7	37.7	1.3	4.8	13.8	20.7
P.E.I.	1947	33.9	25.8	1.2	0.5	10.2	30.4
	1948	32.7	25.7	0.9	0.7	11.2	28.8
N.S.	1947	28.9	36.4	-	4.6	14.1	16.0
	1948	27.1	36.3	-	4.0	15.6	17.0
N.B.	1947	17.3	22.6	0.7	1.1	37.9	20.4
	1948	15.5	22.2	0.3	2.1	40.0	19.5
Que.	1947	9.7	59.8	1.7	3.3	5.2	20.3
	1948	8.5	62.8	0.6	3.4	5.9	18.8
Ont.	1947	24.2	42.7	3.3	7.0	6.7	16.1
	1948	22.6	43.2	2.2	7.3	8.4	16.3
Man.	1947	35.5	21.2	2.0	1.0	14.2	26.1
	1948	34.5	21.3	1.3	1.4	16.0	25.5
Sask.	1947	27.4	11.8	0.1	0.4	26.3	34.0
	1948	26.9	12.5	-	1.0	27.6	32.0
Alta.	1947	29.7	20.1	1.8	2.1	19.4	26.9
	1948	30.1	19.5	1.7	2.8	21.1	24.8
B.C.	1947	10.9	59.7	1.1	10.1	6.1	12.1
	1948	9.1	56.8	0.8	15.4	6.5	11.4



Table 11 - FARM INCOME FROM DAIRYING AND PRICE AVERAGES PER HUNDRED POUNDS OF MILK  
By Provinces and by Products, February 1947 and 1948

	Income		Price		Income		Price	
	1947	1948	1947	1948	1947	1948	1947	1948
	Total Income				(1) Fluid Sales (milk only)			
	\$ '000	\$ '000	\$	\$	\$ '000	\$ '000	\$	\$
Canada	15,494	19,593	2.53	3.18	9,392	10,747	3.29	3.88
P.E.I.	112	155	2.23	3.00	54	62	3.00	3.43
N.S.	568	686	2.55	3.12	345	350	3.45	3.83
N.B.	312	439	2.37	3.27	174	213	3.11	4.12
Que.	3,789	4,508	2.84	3.52	3,001	3,441	3.37	3.88
Ont.	6,547	8,004	2.62	3.26	4,021	4,511	3.31	3.90
Man.	898	1,226	2.09	2.76	329	420	2.91	3.76
Sask.	1,083	1,603	2.01	2.67	350	431	3.13	3.79
Alta.	1,222	1,725	2.11	2.82	501	613	3.11	3.95
B.C.	963	1,247	2.76	3.40	617	706	3.30	3.83
	(2) Fluid Cream				(3) Milk for Concentration			
Canada	956	1,365	2.06	2.64	642	881	2.28	3.23
P.E.I.	3	6	1.93	2.61	-	-	-	-
N.S.	13	24	1.50	2.40	15	8	2.08	2.73
N.B.	9	16	2.08	2.64	-	-	-	-
Que.	218	357	1.80	2.53	96	113	2.41	3.26
Ont.	343	506	2.28	2.86	418	508	2.24	3.08
Man.	83	85	2.39	2.38	-	-	-	-
Sask.	60	80	1.79	2.24	-	-	-	-
Alta.	87	116	1.81	2.35	34	52	2.13	2.87
B.C.	140	175	2.28	2.78	79	200	2.47	3.86
	(4) Cheese Milk				(5) Ice Cream			
Canada	369	326	2.10	2.96	194	405	2.15	2.82
P.E.I.	2	2	2.10	2.82	1	1	1.70	2.66
N.S.	-	-	-	-	14	24	2.15	2.85
N.B.	4	2	1.96	2.89	5	16	1.92	2.89
Que.	59	33	2.05	3.31	37	60	2.29	2.82
Ont.	225	209	2.15	3.09	81	177	2.16	2.92
Man.	27	21	2.00	2.47	13	24	1.88	2.48
Sask.	3	2	2.04	2.77	8	30	1.88	2.58
Alta.	39	48	2.02	2.64	12	30	1.99	2.78
B.C.	10	9	2.06	2.66	23	43	2.34	2.85
	(6) Creamery Butter-Fat				(7) Dairy Butter			
Canada	3,580	4,535	50.2	69.2	361	1,286	41.4	65.6
P.E.I.	50	72	51.4	78.0	2	12	42.0	67.0
N.S.	154	191	51.1	72.0	27	89	43.0	66.0
N.B.	83	104	51.4	74.5	37	88	43.0	67.0
Que.	301	347	52.3	72.0	77	157	41.0	69.0
Ont.	1,400	1,718	51.8	70.2	59	375	42.5	68.0
Man.	426	570	48.9	70.7	20	106	40.0	64.0
Sask.	572	742	48.7	66.2	90	318	41.0	63.0
Alta.	515	749	47.75	67.95	34	117	40.0	62.0
B.C.	79	90	49.6	64.4	15	24	43.0	63.0

STATISTICS CANADA LIBRARY  
BIBLIOTHÈQUE STATISTIQUE CANADA



1010779659