

Historical File Copy

DEPARTMENT OF TRADE AND COMMERCE  
DOMINION BUREAU OF STATISTICS  
MINING, METALLURGICAL AND CHEMICAL BRANCH  
OTTAWA - CANADA

PROPERTY OF  
LIBRARY

Dominion Statistician: R. H. Coats, LL.D., F.R.S.C., F.S.S. (Hon.)  
Chief - Mining, Metallurgical and Chemical Branch: W. H. Losee, B.Sc.

MONTHLY REPORT

GOLD PRODUCTION IN CANADA - MARCH, 1939.

The Canadian production of gold in March rose to 414,217 ounces from the preceding month's total of 390,963 ounces and the March, 1938, output of 376,023 ounces according to a report just issued by the Dominion Bureau of Statistics. During the first quarter of the current year, Canada produced 1,216,508 ounces of gold compared with 1,077,947 ounces a year ago.

Production from Ontario sources amounted to 254,761 ounces of which the Porcupine camp produced 107,435 ounces, the Kirkland Lake area 89,967 ounces, and other sources 57,359 ounces. In February the output from the Porcupine camp totalled 101,045 ounces, from the Kirkland Lake area 79,354 ounces, and from other sources 56,650 ounces. The first production from the Preston East Dome mill in the Porcupine camp is included in the March total.

Quebec operators reported an output of 80,451 ounces; in the preceding month 83,738 ounces were produced, while in March, 1938, the production was 72,376 ounces. During the first three months of 1939, Quebec produced 249,689 ounces, or 13.4 per cent above the total for the corresponding months of 1938.

An increase of 8.8 per cent was recorded in the output from British Columbia; the March total was 50,126 ounces, and the February production 46,054 ounces. Production during the first quarter totalled 146,958 ounces as against 128,114 ounces a year ago.

Manitoba and Saskatchewan produced 22,451 ounces in March, thus making a total of 63,026 ounces for the first quarter of 1939. In March, 1938, the output totalled 19,153 ounces.

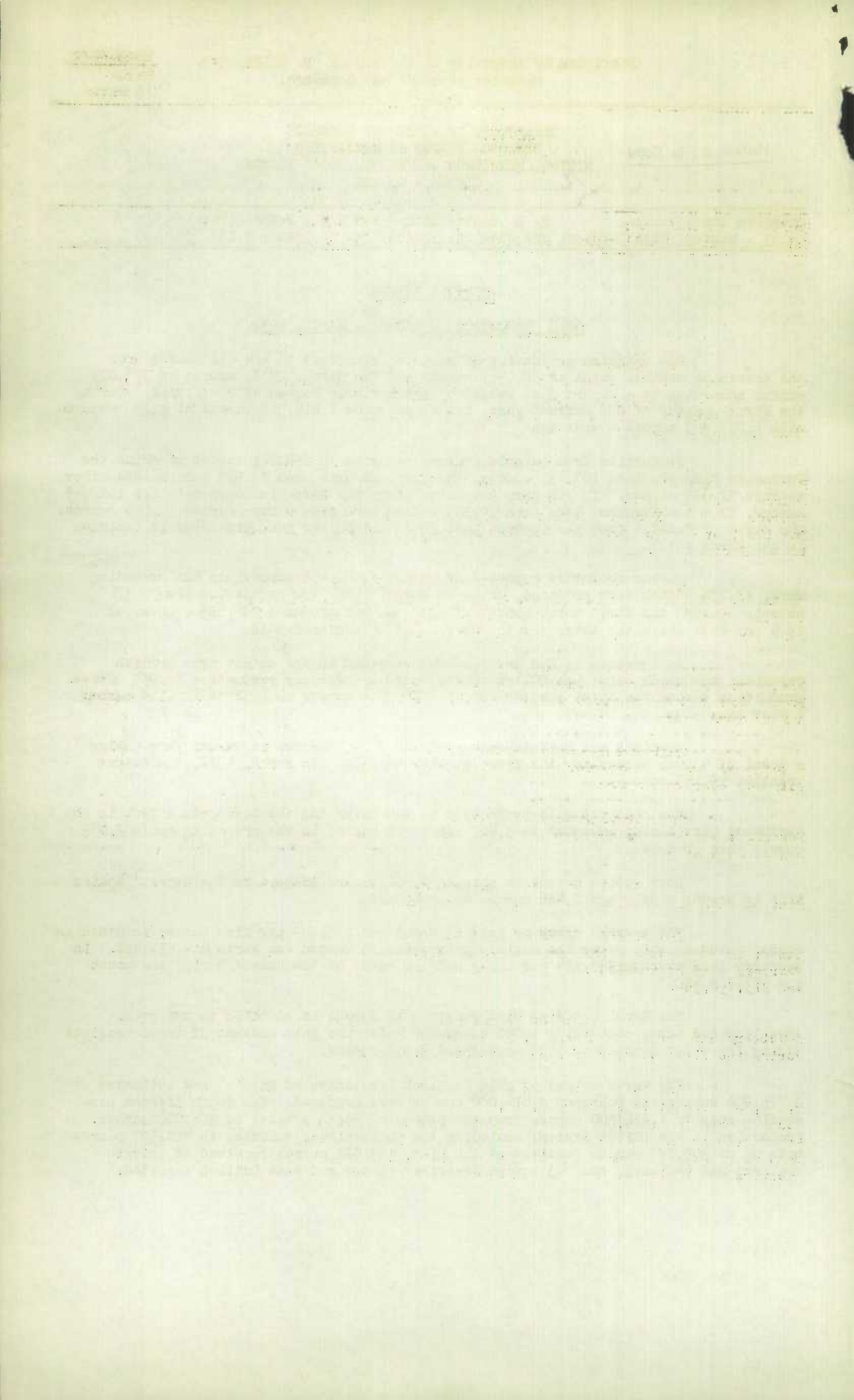
The alluvial gold production in the Yukon and the lode gold output in the Northwest Territories amounted to 3,467 ounces in March; in the preceding month 2,039 ounces were produced.

Nova Scotia producers shipped 2,961 ounces of gold to the Royal Canadian Mint in March; a year ago 2,486 ounces were shipped.

The average price of gold in March was \$35.129 per fine ounce, in Canadian funds; based on this price the month's production in Canada was worth \$14,551,029. In February gold averaged \$35.194 per ounce and the value of the output during the month was \$13,759,552.

The Royal Canadian Mint received in March, in addition to new gold, jewellery and scrap containing 1,068 ounces of gold; the gold content of these receipts during the first quarter of 1939 aggregated 3,512 ounces.

The world output of gold in March (exclusive of Russia) was estimated at 2,775,000 ounces; in February 2,614,000 ounces were produced. The South African production rose to 1,076,000 ounces from the preceding month's total of 986,000 ounces. Production in the United States, including the Philippines, amounted to 410,393 ounces made up of 209,778 ounces received at the Mint, 199,672 ounces received at private smelters and refiners, and 943 ounces contained in ore and base bullion exported.



Production of Gold, by Provinces, in Canada during the three Months ending March, 1939 and 1938.

Province	Three Months ending March	
	1939 (a)	1938 (a)
Nova Scotia .....	9,765	5,882
Quebec .....	249,689	220,120
Ontario .....	739,174	668,550
Manitoba and Saskatchewan .....	63,026	54,832
Alberta .....	13	-
British Columbia .....	146,958	128,114
Yukon and Northwest Territories .	7,883	449
<b>Canada .....</b>	<b>1,216,508</b>	<b>1,077,947</b>

(a) Subject to revision.

PRODUCTION OF GOLD IN CANADA

Month	1939(a)	1938(a)	1937
	Ounces	Ounces	Ounces
January .....	411,328	361,086	329,023
February .....	390,963	340,838	310,485
March .....	414,217	376,023	326,738
April .....		368,439	323,885
May .....		381,089	340,498
June .....		<del>390,693</del>	345,359
July .....		420,778	347,716
August .....		412,135	349,108
September .....		409,612	348,528
October .....		411,263	359,395
November .....		410,023	353,281
December .....		433,877	362,197
<b>TOTAL - CALENDAR YEAR .....</b>		<b>4,715,856</b>	<b>4,096,213</b>
<b>TOTAL - THREE MONTHS ending MARCH .....</b>	<b>1,216,508</b>	<b>1,077,947</b>	<b>966,246</b>

(a) Subject to revision.



1010739575

1994-95

Year	...	...	...
1994-95	...	...	...
1993-94	...	...	...
1992-93	...	...	...
1991-92	...	...	...
1990-91	...	...	...
1989-90	...	...	...
1988-89	...	...	...
1987-88	...	...	...
1986-87	...	...	...
1985-86	...	...	...
1984-85	...	...	...
1983-84	...	...	...
1982-83	...	...	...
1981-82	...	...	...
1980-81	...	...	...
1979-80	...	...	...
1978-79	...	...	...
1977-78	...	...	...
1976-77	...	...	...
1975-76	...	...	...
1974-75	...	...	...
1973-74	...	...	...
1972-73	...	...	...
1971-72	...	...	...
1970-71	...	...	...
1969-70	...	...	...
1968-69	...	...	...
1967-68	...	...	...
1966-67	...	...	...
1965-66	...	...	...
1964-65	...	...	...
1963-64	...	...	...
1962-63	...	...	...
1961-62	...	...	...
1960-61	...	...	...
1959-60	...	...	...
1958-59	...	...	...
1957-58	...	...	...
1956-57	...	...	...
1955-56	...	...	...
1954-55	...	...	...
1953-54	...	...	...
1952-53	...	...	...
1951-52	...	...	...
1950-51	...	...	...
1949-50	...	...	...
1948-49	...	...	...
1947-48	...	...	...
1946-47	...	...	...
1945-46	...	...	...
1944-45	...	...	...
1943-44	...	...	...
1942-43	...	...	...
1941-42	...	...	...
1940-41	...	...	...
1939-40	...	...	...
1938-39	...	...	...
1937-38	...	...	...
1936-37	...	...	...
1935-36	...	...	...
1934-35	...	...	...
1933-34	...	...	...
1932-33	...	...	...
1931-32	...	...	...
1930-31	...	...	...
1929-30	...	...	...
1928-29	...	...	...
1927-28	...	...	...
1926-27	...	...	...
1925-26	...	...	...
1924-25	...	...	...
1923-24	...	...	...
1922-23	...	...	...
1921-22	...	...	...
1920-21	...	...	...
1919-20	...	...	...
1918-19	...	...	...
1917-18	...	...	...
1916-17	...	...	...
1915-16	...	...	...
1914-15	...	...	...
1913-14	...	...	...
1912-13	...	...	...
1911-12	...	...	...
1910-11	...	...	...
1909-10	...	...	...
1908-09	...	...	...
1907-08	...	...	...
1906-07	...	...	...
1905-06	...	...	...
1904-05	...	...	...
1903-04	...	...	...
1902-03	...	...	...
1901-02	...	...	...
1900-01	...	...	...

1994-95

Year	...	...	...
1994-95	...	...	...
1993-94	...	...	...
1992-93	...	...	...
1991-92	...	...	...
1990-91	...	...	...
1989-90	...	...	...
1988-89	...	...	...
1987-88	...	...	...
1986-87	...	...	...
1985-86	...	...	...
1984-85	...	...	...
1983-84	...	...	...
1982-83	...	...	...
1981-82	...	...	...
1980-81	...	...	...
1979-80	...	...	...
1978-79	...	...	...
1977-78	...	...	...
1976-77	...	...	...
1975-76	...	...	...
1974-75	...	...	...
1973-74	...	...	...
1972-73	...	...	...
1971-72	...	...	...
1970-71	...	...	...
1969-70	...	...	...
1968-69	...	...	...
1967-68	...	...	...
1966-67	...	...	...
1965-66	...	...	...
1964-65	...	...	...
1963-64	...	...	...
1962-63	...	...	...
1961-62	...	...	...
1960-61	...	...	...
1959-60	...	...	...
1958-59	...	...	...
1957-58	...	...	...
1956-57	...	...	...
1955-56	...	...	...
1954-55	...	...	...
1953-54	...	...	...
1952-53	...	...	...
1951-52	...	...	...
1950-51	...	...	...
1949-50	...	...	...
1948-49	...	...	...
1947-48	...	...	...
1946-47	...	...	...
1945-46	...	...	...
1944-45	...	...	...
1943-44	...	...	...
1942-43	...	...	...
1941-42	...	...	...
1940-41	...	...	...
1939-40	...	...	...
1938-39	...	...	...
1937-38	...	...	...
1936-37	...	...	...
1935-36	...	...	...
1934-35	...	...	...
1933-34	...	...	...
1932-33	...	...	...
1931-32	...	...	...
1930-31	...	...	...
1929-30	...	...	...
1928-29	...	...	...
1927-28	...	...	...
1926-27	...	...	...
1925-26	...	...	...
1924-25	...	...	...
1923-24	...	...	...
1922-23	...	...	...
1921-22	...	...	...
1920-21	...	...	...
1919-20	...	...	...
1918-19	...	...	...
1917-18	...	...	...
1916-17	...	...	...
1915-16	...	...	...
1914-15	...	...	...
1913-14	...	...	...
1912-13	...	...	...
1911-12	...	...	...
1910-11	...	...	...
1909-10	...	...	...
1908-09	...	...	...
1907-08	...	...	...
1906-07	...	...	...
1905-06	...	...	...
1904-05	...	...	...
1903-04	...	...	...
1902-03	...	...	...
1901-02	...	...	...
1900-01	...	...	...

1994-95