

33-001

NOV 13 1947

DEPARTMENT OF TRADE AND COMMERCE  
DOMINION BUREAU OF STATISTICS  
CENSUS OF INDUSTRY  
OTTAWA - CANADA

APR 26 2011

Dominion Statistician:

Herbert Marshall

Director, Division of Census of Industry and Merchandising:

W. H. Losee

Chief, Fisheries and Animal Products Statistics:

W. H. Lanceloy

Vol. 8 - 9

Year's subscription, \$ 1.00  
Single Copies, .10

STATISTICS ON HIDES, SKINS AND LEATHER IN CANADA  
September, 1947

Stocks of raw cattle hides at the end of September, 1947, registered a decrease of 8.03 p.c. as compared with the previous month and a decrease of 4.9 as compared with September, 1946.

Wettings of cattle hides, and horse fronts showed decreases as compared with August. As compared with September, 1946, there were increases in all classes except cattle hides, Goat and kid skin and horse butts.

Production of sole leather in September increased by 556,163 lbs. as compared with the August figures. Deliveries increased by 275,493 lbs. and finished stock on hand by 204,439 lbs. In cattle upper leather production increased by 536,007 sq. ft., deliveries by 255,532 sq. ft., and stocks by 32,434 sq. ft. In calf and kip upper leather production increased by 203,253 sq. ft., deliveries by 15,769 sq. ft. and stock on hand increased by 109,974 sq. ft.

Stocks of Raw Hides and Skins Held by Tanners, Packers and Dealers

	September 30, 1946	August 31, 1947	September 30, 1947
Cattle hides (1) (number)			
Domestic - packer .....	421,679	354,054	321,634
- country .....	121,644	149,112	150,052
- Total .....	543,323	503,166	471,686
Foreign .....	-	58,302	44,665
Cattle Hides, total .....	543,323	561,468	516,351
Calf and Kip Skins (2) (number)			
Domestic - packer .....	257,253	255,049	247,706
- country .....	182,085	238,455	252,166
Total .....	439,338	493,504	499,872
Foreign .....	28,646	127,309	107,723
Calf and kip skins, total .....	467,984	620,813	607,595
Goat and Kid skins (2) number .....	307,870	114,116	164,182
Sheep and Lamb Skins (2) (dozens) .....	74,505	63,734	51,070
Horse Hides (number) .....	21,500(3)	49,904(4)	44,747(5)

Note: Domestic on hand includes domestic in transit.

		Foreign Hides and Skins in -(not included in above)	Transit
Cattle Hides (1) - number .....	-	8,519	2,165
Calf and Kip Skins - number .....	13,420	-	-
Goat and Kid Skins (2) - number .....	156,956	-	-
Sheep and Lamb Skins (2) - dozens .....	-	-	-
Horse Hides - number .....	-	1,000	-

- (1) Includes overweight kips in 1947, previously with calf and kip skins.
- (2) 1947 figures include East India Tanned.
- (3) Includes 7,346 horse fronts.
- (4) Includes 27,965 horse fronts.
- (5) Includes 26,269 horse fronts.

1911

POPULATION

TABLE 1

POPULATION OF ALABAMA BY COUNTY, 1911

Alabama is divided into 67 counties, and the population of each county is given in the following table.

The population of Alabama in 1911 was 1,246,000, an increase of 10.5 per cent since 1900.

The following table shows the population of each county in 1911.

County	Population
Adair	1,200
Chilton	1,200
Choctaw	1,200
Clarke	1,200
Crawford	1,200
Cullman	1,200
De Kalb	1,200
Etowah	1,200
Fayette	1,200
Franklin	1,200
Genevieve	1,200
Greene	1,200
Hale	1,200
Jefferson	1,200
Lamar	1,200
Lawrence	1,200
Madison	1,200
Marion	1,200
Mobile	1,200
Montgomery	1,200
Northampton	1,200
Opelika	1,200
Polk	1,200
Prichard	1,200
Shelby	1,200
St. Clair	1,200
Tallapoosa	1,200
Telford	1,200
Trotter	1,200
Union	1,200
Walker	1,200
Washington	1,200
Wilcox	1,200
Yulee	1,200

Total population of Alabama, 1911, 1,246,000.

Wettings of Hides and Skins

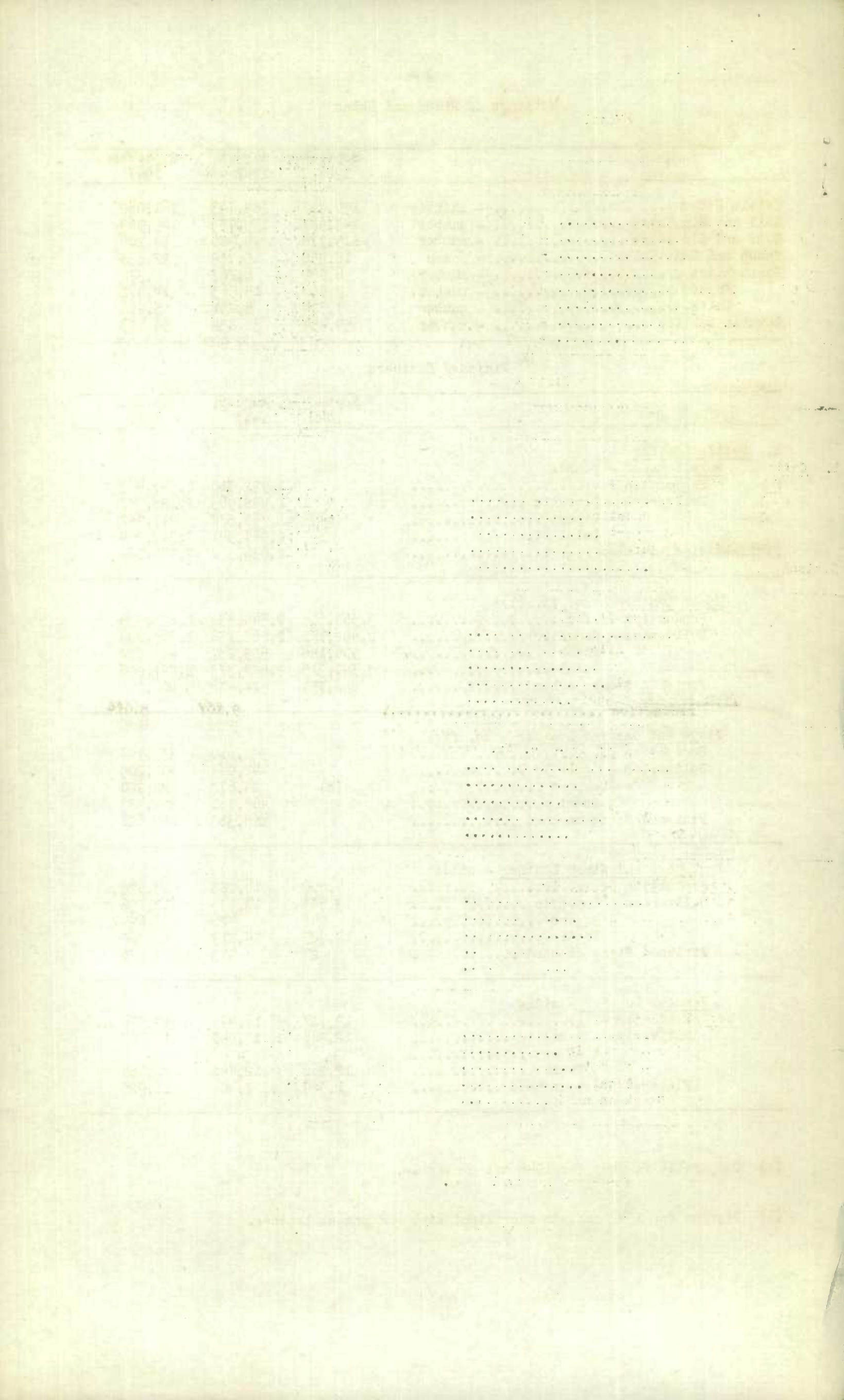
	September, 1946	August, 1947	September, 1947
Cattle Hides .....	196,847	182,793	161,062
Calf and Kip Skins .....	143,947	139,753	145,963
Goat and Kid Skins .....	115,976	74,980	79,206
Sheep and Lamb Skins .....	18,456	15,759	22,535
Horse Hides .....	6,034	6,267	8,378
Fronts .....	9,980	15,563	14,372
Butts .....	7,304	5,251	5,276
Cowhide bellies .....	54,454	31,834	56,583

Finished Leathers

	September, 1946	August, 1947	September, 1947
<b>1. Cattle Leather</b>			
<u>Sole Leather - pounds</u>			
Production .....		1,991,310	2,547,473
Deliveries - Domestic .....		1,998,963	2,125,787
- export .....	(a)	68,578	217,247
Total .....		2,067,541	2,343,034
Finished Stock on hand .....		2,036,592	2,241,031
<u>Upper Leather - sq. ft. (1)</u>			
Production .....	3,559,606	2,344,332	2,860,339
Deliveries - domestic .....	2,492,181	2,062,136	2,369,083
- export .....	906,144	529,237	478,822
Total .....	3,398,325	2,592,373	2,847,905
Finished Stock on hand .....	866,751	574,426	606,860
<u>Glove and Garment Leather - sq. ft.</u>			
Production .....		381,610	337,748
Deliveries - domestic .....		441,089	301,203
- export .....	(a)	24,672	28,280
Total .....		465,761	329,483
Finished Stock on hand .....		135,363	143,628
<u>Bag, Case and Strap Leather - sides</u>			
Production .....	14,206	14,283	13,823
Deliveries - domestic .....	13,983	13,793	12,756
- export .....	242	426	624
Total .....	14,225	14,219	13,380
Finished Stock on hand .....	23	443	886
<u>Harness Leather - sides</u>			
Production .....	12,727	16,477	14,586
Deliveries - domestic .....	12,266	12,840	10,065
- export .....	-	-	-
Total .....	12,266	12,840	10,065
Finished Stock on hand .....	1,329	7,404	11,925

(a) Comparable figures for 1946 not available.

(1) Figures for 1947 include overweight kips and patent leather.



	September, 1946	August, 1947	September, 1947
<b>1. Cattle Leather - Concl'd</b>			
<u>Belting Leather - butts and butt bends</u>			
Production .....	3,670	5,845	5,013
Deliveries - domestic .....	4,122	5,427	4,779
- export .....	-	-	-
- Total .....	4,122	5,427	4,779
Finished Stock on hand .....	536	4,663	4,897
<b>2. Calf and Kip Skin Upper Leather - sq. ft.</b>			
Production .....	1,451,725	1,284,254	1,487,506
Deliveries - domestic .....	884,173	860,085	800,951
- export .....	316,242	501,678	576,581
Total .....	1,200,415	1,361,763	1,377,532
Finished Stock on hand .....	853,264	1,066,843	1,176,817
<b>3. Goat and Kid Leather - Skins</b>			
Production .....		55,255	72,299
Deliveries - Domestic .....		44,515	65,923
- export .....	(a)	14,157	10,373
Total .....		58,672	76,296
Finished Stock on hand .....		16,582	12,585
<b>4. Sheep and Lamb Leathers</b>			
<u>Glove and Garment Leathers - (doz. skins)</u>			
Production .....		3,148	7,628
Deliveries - domestic .....		3,703	5,160
- export .....	(a)	-	213
Total .....		3,703	5,373
Finished Stock on hand .....		2,386	4,641
<u>Shoo Leather - (doz. skins)</u>			
Production .....		9,107	5,079
Deliveries - domestic .....		9,162	4,981
- export .....	(a)	-	-
Total .....		9,162	4,981
Finished Stock on hand .....		2,497	2,595
<b>5. Horse Leather</b>			
<u>Glove and Garment Leather - (sq. ft.)</u>			
Production .....		457,730	445,528
Deliveries - domestic .....		460,767	322,222
- export .....	(a)	-	1,506
Total .....		460,767	323,728
Finished Stock on hand .....		14,754	136,554

(a) Comparable figures for 1946 not available.

STATISTICS CANADA LIBRARY  
BIBLIOTHEQUE STATISTIQUE CANADA



1010732934