

33-001

in Boston
12-4320 *Burn*
Strike

CV

Published by Authority of the Rt. Hon. C. D. Howe, M. P.,
Minister of Trade and Commerce

STATISTICS STATISTIQUE
CANADA CANADA

DEPARTMENT OF TRADE AND COMMERCE
DOMINION BUREAU OF STATISTICS
CENSUS OF INDUSTRY
OTTAWA - CANADA

APR 26 2011

LIBRARY
BIBLIOTHEQUE

Dominion Statistician:
Director, Division of Census of Industry & Merchandising:
Chief, Fisheries and Animal Products Statistics:

Herbert Marshall
W. H. Losee
W.H. Lanceley

Vol. 9 - 1

Year's subscription \$1.00
Single copies .10

STATISTICS ON HIDES, SKINS AND LEATHER IN CANADA
JANUARY, 1948

Stocks of raw cattle hides at the end of January, 1948 registered an increase of 1.3 p.c. compared with the previous month and an increase of 9.2 p.c. as compared with January 1947.

Wettings of all classes showed decreases with the exception of cattle hides and sheep and lamb skins. As compared with January 1947, there were decreases in all classes except horse hides and cowhide bellies.

Production of sole leather in January decreased by 307,627 lbs. as compared with the December 1947 figures. Deliveries decreased by 678,123 lbs. and finished stock on hand increased by 182,619 lbs. In cattle upper leather production decreased by 280,067 sq. ft., deliveries increased by 164,463 sq. ft., and finished stock on hand decreased by 13,112 sq. ft. In calf and kip upper leather production decreased by 596,489 sq. ft., deliveries by 571,973 sq. ft., while finished stock on hand increased by 366,580 sq. ft.

Stocks of Raw Hides and Skins Held by Tanners, Packers & Dealers

	January 31, 1947	December 31, 1947	January 31, 1948
Cattle hides (1) (number)			
Domestic - packer	475,622	488,485	482,378
- country	133,708	183,779	186,256
- Total	609,330	672,264	668,634
Foreign	32,465	20,420	33,080
Cattle Hides, total	641,795	692,684	701,714
Calf and Kip Skins - (number)			
Domestic - packer	153,551	196,010	149,976
- country	114,572	309,508	305,500
- Total	268,123	505,518	455,476
Foreign	294,001	213,289	248,469
Calf and kip skins, total	562,124	718,807	703,945
Goat and Kid skins (2) (number)	209,715	144,627	145,216
Sheep and Lamb skins (2) (dozens)	86,340	76,512	66,096
Horse Hides (number)	33,125(3)	59,638(4)	64,468(5)

NOTE: Domestic on hand includes domestic in transit

Foreign Hides and Skins in Transit
(not included in above)

		January 31, 1947	December 31, 1947	January 31, 1948
Cattle Hides (1)	- number	11,237	2,000	14,000
Calf and Kip Skins	- number	34,444	85,527	41,636
Goat and Kid Skins (2)	- number	144,556	-	8,000
Sheep and Lamb Skins (2)	- dozens	-	-	-
Horse Hides	- number	-	-	-

- (1) Includes overweight kips
- (2) 1947 figures include East India Tanned.
- (3) Includes, 6,792 horse fronts.
- (4) Includes 21,372 horse fronts.
- (5) Includes 32,198 horse fronts.



STATISTICS
COMMISSION

1958-59



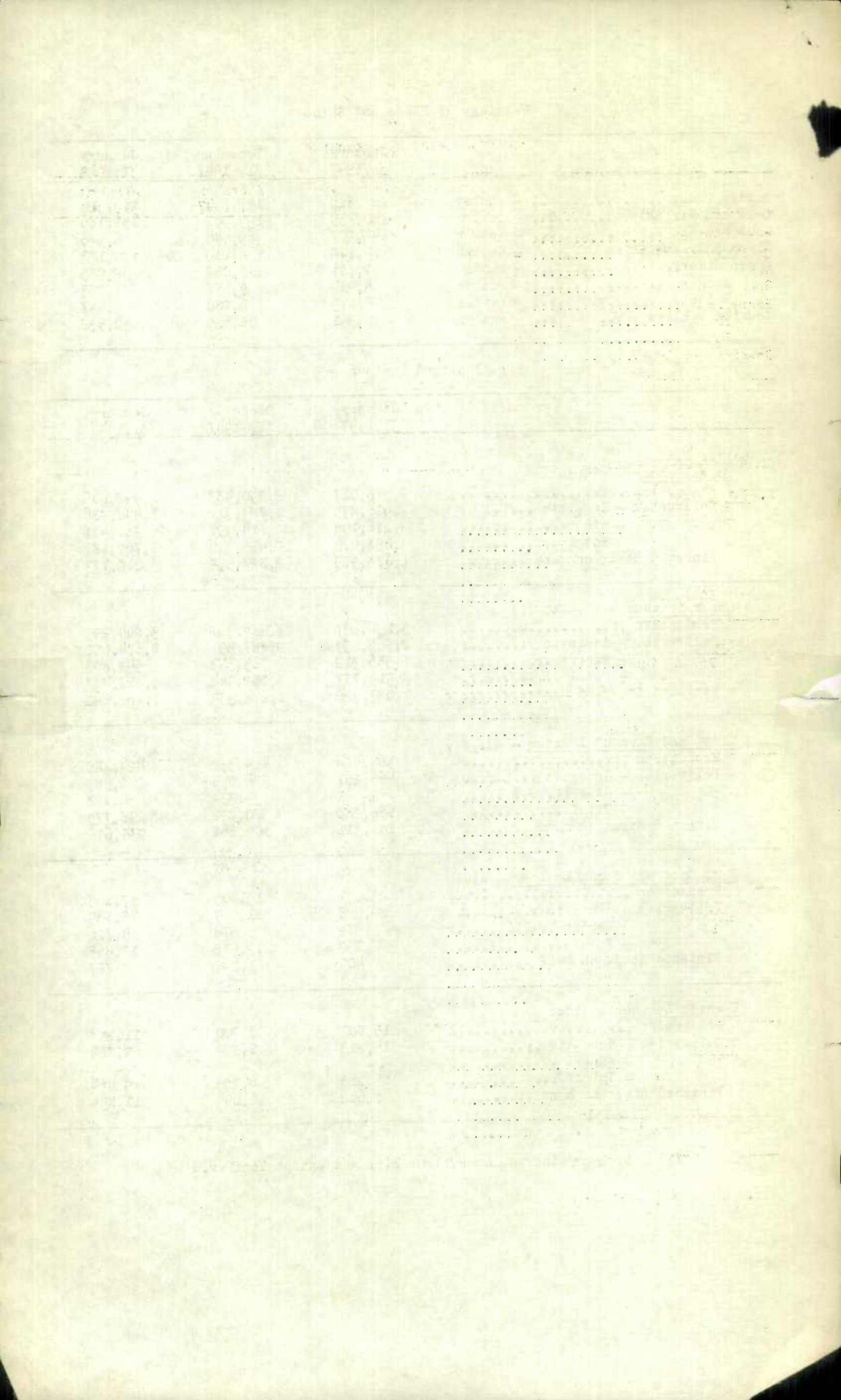
Wettings of Hides and Skins

	January 31, 1947	December 31, 1947	January 31, 1948
Cattle Hides	229,820	192,227	206,350
Calf and Kip Skins	160,155	199,502	152,186
Goat and Kid Skins	143,237	69,546	46,946
Sheep and Lamb Skins	24,218	8,214	10,133
Horse Hides.....	2,791	7,068	2,985
Fronts	8,914	9,477	7,753
Butts	6,229	6,280	4,647
Cowhide bellies	26,381	58,639	50,538

Finished Leather

	January 31, 1947	December 31, 1947	January 31, 1948
1. Cattle Leather			
<u>Sole Leather - pounds</u>			
Production	2,976,027	2,250,433	1,942,806
Deliveries - Domestic	2,926,875	1,723,312	1,448,716
- export	126,195	714,998	311,471
- Total	3,053,070	2,438,310	1,760,187
Finished Stock on hand	1,073,973	2,829,558	3,012,177
<u>Upper Leather - sq. ft. (1)</u>			
Production	3,256,537	3,484,362	3,204,295
Deliveries - domestic	2,563,459	2,287,591	2,674,600
- export	1,356,318	765,353	542,807
- Total	3,919,777	3,052,944	3,217,407
Finished Stock on hand	1,037,906	1,274,954	1,261,842
<u>Glove and Garment Leather - sq. ft.</u>			
Production	564,474	414,352	424,788
Deliveries - domestic	666,267	336,058	262,587
- export	-	34,334	36,188
- Total	666,267	370,392	298,775
Finished Stock on hand	101,311	109,662	235,675
<u>Bag, Case and Strap Leather - sides</u>			
Production	23,047	13,405	17,605
Deliveries - domestic	22,548	11,907	12,139
- export	282	678	5,726
- Total	22,830	12,585	17,865
Finished Stock on hand	409	1,047	787
<u>Harness Leather - sides</u>			
Production	15,803	7,700	11,223
Deliveries - domestic	15,213	6,839	9,864
- export	-	-	-
- Total	15,213	6,839	9,864
Finished Stock on hand	2,602	10,095	11,454

(1) Figures include overweight kips and patent leather.



	January 1947	December 1947	January 1948
1. Cattle Leather - concl'd.			
Belting Leather - butts & Butt bends			
Production	6,002	5,629	4,535
Deliveries - domestic	6,428	4,424	5,540
- export	-	-	-
Total	6,428	4,424	5,540
Finished Stock on hand	1,307	7,484	6,479
2. Calf and Kip Skin Upper Leather - sq. ft.			
Production	1,508,293	1,950,560	1,354,071
Deliveries - domestic	863,307	712,098	564,812
- export	414,845	847,366	422,679
Total	1,278,152	1,559,464	987,491
Finished Stock on hand	1,042,845	1,652,030	2,018,610
3. Goat and Kid Leather - Skins			
Production	141,924	70,751	63,786
Deliveries - domestic	132,802	58,363	55,204
- export	848	-	-
Total	133,650	58,363	55,204
Finished Stock on hand	28,699	21,884	30,466
4. Sheep and Lamb Leathers			
Glove and Garment Leathers - (doz. skins)			
Production	6,092	3,855	1,576
Deliveries - domestic	6,998	3,733	1,651
- export	309	68	-
- Total	7,307	3,801	1,651
Finished Stock on hand	1,439	4,550	4,475
Shoe Leather - (Doz. Skins)			
Production	6,782	4,568	5,166
Deliveries - domestic	7,161	1,432	5,990(1)
- export	-	-	-
- Total	7,161	1,432	5,990
Finished Stock on hand	3,781	5,382	4,556
5. Horse Leather			
Glove and Garment Leather - (sq.ft.)			
Production	418,555	504,430	489,638
Deliveries - domestic	705,909	343,775	424,257
- export	-	-	-
Total	705,909	343,775	424,257
Finished Stock on hand	46,050	462,304	527,685

(1) Delivery figures include a small amount ruined in production.

STATISTICS CANADA LIBRARY
BIBLIOTHÈQUE STATISTIQUE CANADA



1010732942

