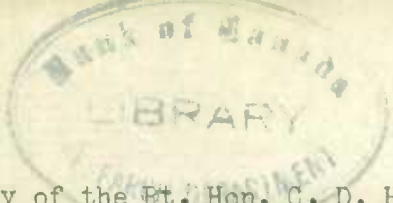


33-001



T. Adlon
12-4320

CV Published by Authority of the Rt. Hon. C. D. Howe, M. P.,
Minister of Trade and Commerce

STATISTICS STATISTIQUE
CANADA CANADA

DEPARTMENT OF TRADE AND COMMERCE
DOMINION BUREAU OF STATISTICS
CENSUS OF INDUSTRY
OTTAWA - CANADA

APR 26 2011

LIBRARY
BIBLIOTHÈQUE

Dominion Statistician: Herbert Marshall
Director, Division of Census of Industry & Merchandising: W. H. Losee
Chief, Fisheries and Animal Products Statistics: W. H. Lanceley

Vol. 9 - 2

Year's subscription \$1.00
Single copies .10

STATISTICS ON HIDES, SKINS AND LEATHER IN CANADA
FEBRUARY, 1948

Stocks of raw cattle hides at the end of February, 1948 registered a decrease of 0.9 p.c. compared with the previous month and an increase of 13.09 p.c. as compared with February, 1947.

Wettings of all classes showed decreases with the exception of goat and kid skins, sheep and lamb skins and cowhide bellies. As compared with February, 1947 there were decreases in all classes except cowhide bellies.

Production of sole leather in February increased by 458,851 lbs. as compared with the January figures. Deliveries decreased by 218,578 lb. and finished stock on hand increased by 860,048 lb. In cattle upper leather production decreased by 65,059 sq. ft. Deliveries decreased by 360,843 sq. ft., and finished stock on hand increased by 282,672 sq. ft. In calf and kip upper leather production decreased by 60,528 sq. ft. deliveries by 132,378 sq. ft. while finished stock on hand increased by 438,430 sq. ft.

Stocks of Raw Hides and Skins Held by Tanners, Packers & Dealers

	February 28, 1947	January 31, 1948	February 29, 1948
Cattle hides (1) (number)			
Domestic - packer.....	433,129	482,378	467,334
- country.....	129,218	186,256	191,616
- Total.....	562,347	668,634	658,950
Foreign.....	52,382	33,080	36,266
Cattle Hides, Total.....	614,729	701,714	695,216
Calf and Kip Skins - (number)			
Domestic - packer.....	122,664	149,976	149,260
- country.....	136,790	305,500	319,205
- Total.....	259,454	455,476	468,465
Foreign.....	256,760	248,469	242,104
Calf and kip skins, total.....	516,214	703,945	710,569
Goat and Kid skins (2) (number).....	181,314	145,216	185,373
Sheep and Lamb skins (2) (dozens).....	82,682	66,096	61,624
Horse Hides (number).....	55,188 (3)	64,468 (4)	68,098 (5)

NOTE: Domestic on hand includes domestic in transit

	Foreign Hides and Skins in transit (not included in above)		
Cattle Hides (1) - number.....	14,413	14,000	1,091
Calf and Kip Skins - number.....	4,170	41,636	-
Goat and Kid Skins (2) - number.....	500	8,000	-
Sheep and Lamb Skins (2) - Dozens.....	1,214	-	-
Horse Hides - number.....	2,203	-	2,000

- (1) Includes overweight kips
- (2) Figures include East India Tanned
- (3) Includes, 29,260 horse fronts.
- (4) Includes 32,198 horse fronts.
- (5) Includes 30,737 horse fronts.

STATISTISKE BUREAU
KØBENHAVN

1905

STATISTISKE
BUREAU

STATISTISKE
BUREAU

STATISTISKE
BUREAU

STATISTISKE
BUREAU

STATISTISKE
BUREAU

STATISTISKE
BUREAU

STATISTISKE
BUREAU

STATISTISKE
BUREAU

STATISTISKE
BUREAU

STATISTISKE
BUREAU

STATISTISKE
BUREAU

STATISTISKE
BUREAU

STATISTISKE
BUREAU

STATISTISKE
BUREAU

STATISTISKE
BUREAU

STATISTISKE
BUREAU

STATISTISKE
BUREAU

STATISTISKE
BUREAU

STATISTISKE
BUREAU

STATISTISKE
BUREAU

STATISTISKE
BUREAU

STATISTISKE
BUREAU

STATISTISKE
BUREAU

STATISTISKE
BUREAU

STATISTISKE
BUREAU

STATISTISKE
BUREAU

STATISTISKE
BUREAU

head leather 10 pieces

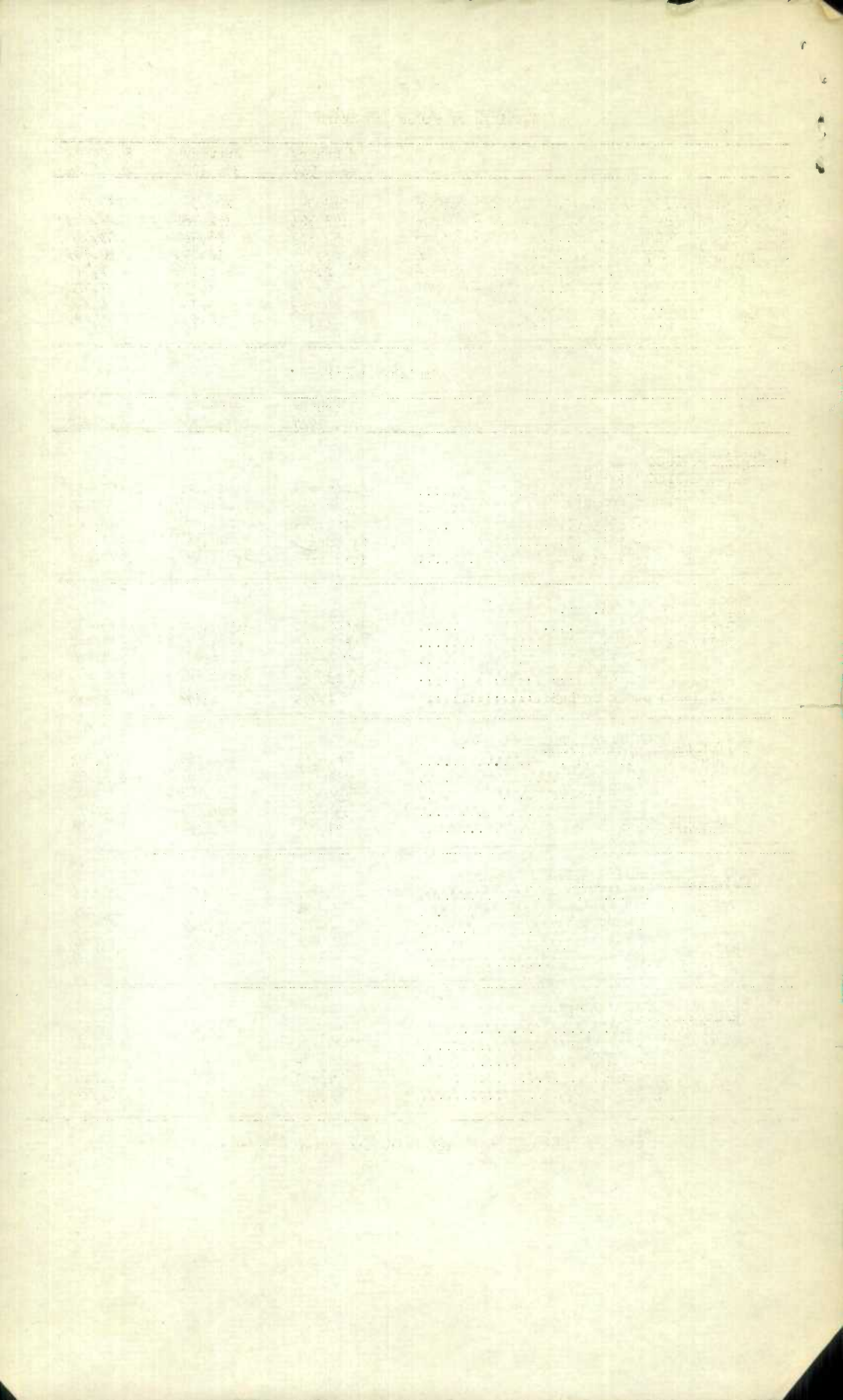
Wettings of Hides and Skins

	February 28, 1947	January 31, 1948	February 29, 1948
Cattle Hides..... - number	217,099	206,350	170,597
Calf and Kip Skins..... - number	158,504	152,186	127,693
Goat and Kid Skins..... - number	89,813	46,946	83,546
Sheep and Lamb Skins..... - dozens	23,575	10,133	10,833
Horse Hides..... - number	2,613	2,985	1,011
Fronts..... - number	8,072	7,753	7,342
Butts..... - number	8,003	4,647	4,100
Cowhide bellies..... - number	34,129	50,538	51,582

Finished Leather

	February 28, 1947	January 31, 1948	February 29, 1948
1. Cattle Leather			
<u>Sole Leather</u> - pounds			
Production.....	2,647,891	1,942,806	2,401,657
Deliveries - Domestic.....	2,488,949	1,448,716	1,472,505
- export.....	101,425	311,471	69,104
- Total.....	2,590,374	1,760,187	1,541,609
Finished Stock on hand.....	1,131,490	3,012,177	3,872,225
<u>Upper Leather</u> - sq. ft. (1)			
Production.....	3,507,151	3,204,295	3,139,236
Deliveries - domestic.....	2,898,471	2,674,600	2,293,388
- export.....	745,169	542,807	563,176
- Total.....	3,643,640	3,217,407	2,856,564
Finished Stock on hand.....	901,456	1,261,842	1,544,514
<u>Glove and Garment Leather</u> - sq. ft.			
Production.....	464,271	424,788	417,791
Deliveries - domestic.....	403,766	262,587	269,353
- export.....	130,051	36,188	26,800
- Total.....	533,817	298,775	296,153
Finished Stock on hand.....	31,765	235,675	357,313
<u>Bag, Case and Strap Leather</u> - sides			
Production.....	17,066	17,605	15,558
Deliveries - domestic.....	17,138	12,139	14,305
- export.....	235	5,726	1,394
- Total.....	17,373	17,865	15,699
Finished Stock on hand.....	102	787	646
<u>Harness Leather</u> - sides			
Production.....	14,938	11,223	10,687
Deliveries - domestic.....	15,128	9,864	5,106
- export.....	-	-	60
- Total.....	15,128	9,864	5,166
Finished Stock on hand.....	2,420	11,454	16,975

(1) Figures, include overweight kips and patent leather.



	February 28, 1947	January 31, 1948	February 29, 1948
<u>1. Cattle Leather - concl'd.</u> <i>1 butt = 16.5 lbs. = .25 of a cord.</i>			
Belting Leather - butts & Butt bends			
Production.....	5,078	4,535	4,542
Deliveries - domestic.....	5,639	5,540	5,207
- export.....	-	-	-
Total.....	5,639	5,540	5,207
Finished Stock on hand.....	746	6,479	5,814
<u>2. Calf and Kip Skin Upper Leather - sq. ft.</u> <i>7.50</i>			
Production.....	1,447,378	1,354,071	1,293,543
Deliveries - domestic.....	790,917	564,812	553,644
- export.....	682,115	422,679	301,669
Total.....	1,473,032	987,491	855,113
Finished Stock on hand.....	1,017,145	2,018,610	2,457,040
<u>3. Goat and Kid Leather - Skins</u>			
Production.....	131,976	63,786	52,187
Deliveries - domestic.....	139,085	55,204	53,908
- export.....	-	-	-
Total.....	139,085	55,204	53,908
Finished Stock on hand.....	21,590	30,466	28,745
<u>4. Sheep and Lamb Leathers</u>			
Glove and Garment Leathers - (doz. skins)			
Production.....	7,796	1,576	4,099
Deliveries - domestic.....	6,866	1,651	3,837
- export.....	614	-	-
Total.....	7,480	1,651	3,837
Finished Stock on hand.....	1,755	4,475	4,737
<u>Shoe Leather - (Doz. Skins)</u>			
Production.....	5,491	5,166	4,453
Deliveries - domestic.....	6,727	5,990 (1)	3,523
- export.....	-	-	-
Total.....	6,727	5,990	3,523
Finished Stock on hand.....	2,545	4,556	5,486
<u>5. Horse Leather</u>			
Glove and Garment Leather - (sq. Ft.)			
Production.....	397,259	489,638	329,651
Deliveries - domestic.....	439,529	424,257	198,493
- export.....	-	-	-
Total.....	439,529	424,257	198,493
Finished Stock on hand.....	3,780	527,685	658,843

(1) Delivery figures include a small amount ruined in production.

STATISTICS CANADA LIBRARY
BIBLIOTHÈQUE STATISTIQUE CANADA



1010732944