

Published by Authority of the Rt. Hon. C. D. Howe
 Minister of Trade and Commerce
 Department of Trade and Commerce
 Dominion Bureau of Statistics-- Ottawa, Canada
 Industry and Merchandising Division
 Mining, Metallurgical and Chemical Section

DOMINION BUREAU
 OF STATISTICS

SEP 1949

Price 10 cents

PROPERTY OF THE
 LIBRARY

MCI

MOTOR VEHICLE SHIPMENTS

JULY - 1949

Factory shipments of Canadian-made vehicles totalled 25,383 units in July, 1949 compared with 30,096 units in the previous month and with 15,146 units in July, 1948. The shipments for the current month included 17,324 passenger cars, 8,033 trucks and 26 buses.

Table 1 - Motor Vehicle Shipments - Canada - July, 1949

	Factory Shipments of Made-in-Canada Vehicles			Shipments of vehicles imported from United States
	For sale in Canada	For export	Total	
(Number of Units)				
(a) <u>Passenger Cars -</u>				
Permanent open cars:				
Roadsters
Touring
Convertible cars:				
Coupe, roadster	1
Sedan, touring	25
Permanent closed cars:				
Coupe	1,915	18	1,933	5
2-door sedan	4,285	14	4,299	68
4-door sedan	9,835	710	10,545	312
Other closed	126	...	126	39
Chassis (sold without bodies).	1	420	421	...
Total Passenger Cars	16,162	1,162	17,324	450
(b) <u>Commercial vehicles, including</u> <u>trucks, buses and chassis -</u>				
<u>Maximum Gross Vehicle Weight</u> <u>- in pounds -</u>				
5,000 and less	3,482	538	4,020	21
5,001 - 10,000	1,364	153	1,517	51
10,001 - 14,000	837	583	1,420	5
14,001 - 16,000	827	98	925	10
16,001 - 19,500	93	...	93	3
19,501 - 26,000	22	...	22	6
Over 26,000	36	...	36	12
Total Trucks	6,661	1,372	8,033	108
Total Coaches or Buses	26	...	26	7
Total Commercial Vehicles ..	6,687	1,372	8,059	115
TOTAL PASSENGER AND COMMERCIAL	22,849	2,534	25,383	565

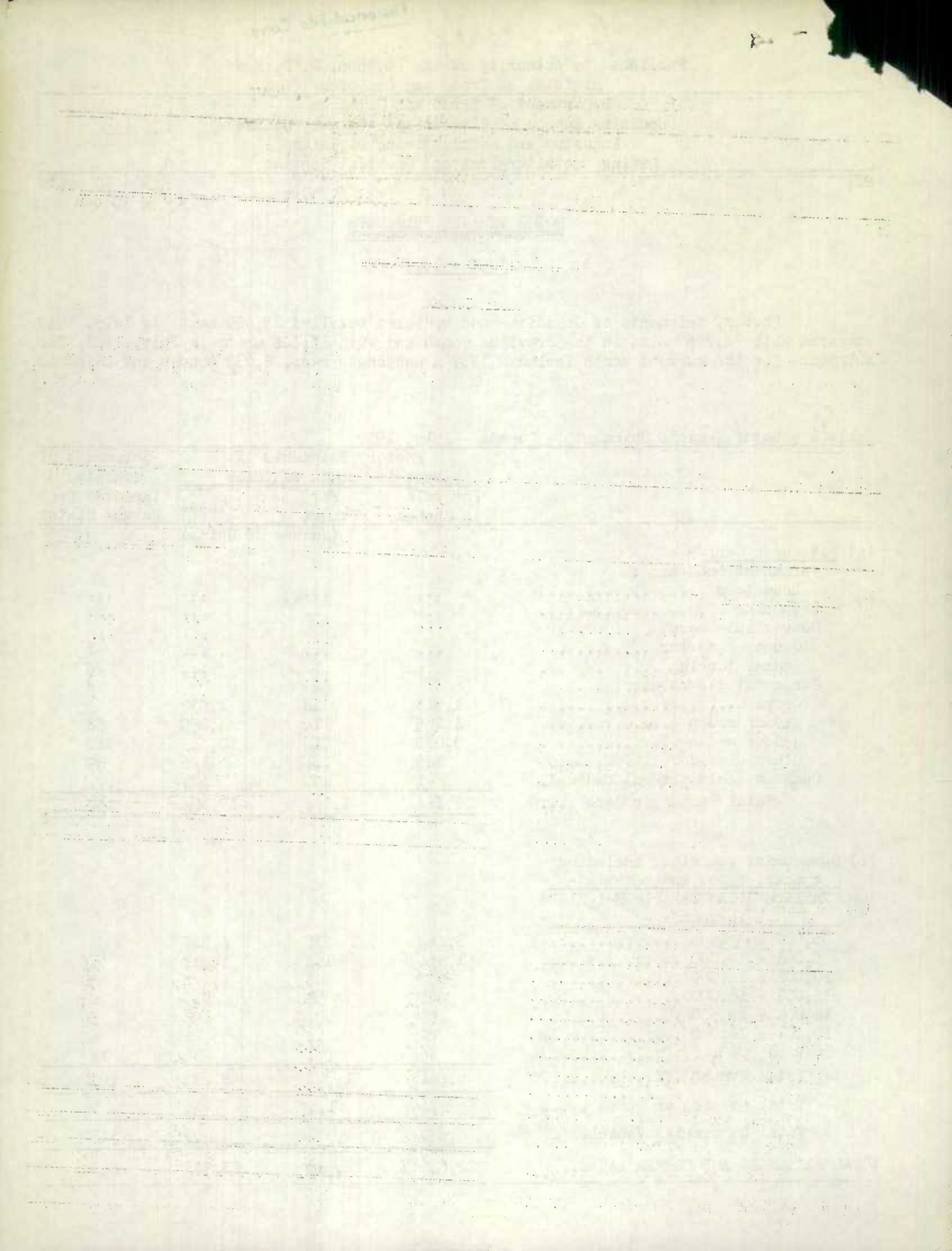


Table 2 - Motor Vehicle Shipments - Canada - Seven Months Ended July, 1949

	Factory Shipments of Made-in-Canada Vehicles			Shipments of vehicles imported from United States
	For sale in Canada	For export	Total	
	(Number of Units)			
(a) <u>Passenger Cars</u> -				
Permanent open cars:				
Roadsters
Convertible cars:				
Coupe, roadster	55
Sedan, touring	87
Permanent closed cars:				
Coupe	12,541	233	12,774	46
2-door sedan	24,843	55	24,898	1,606
4-door sedan	58,411	5,280	63,691	3,094
Other closed	332	...	332	175
Chassis (sold without bodies).	1	3,098	3,099	...
Total Passenger Cars	96,128	8,666	104,794	5,063
(b) <u>Commercial vehicles, including trucks, buses and chassis -</u>				
<u>Maximum Gross Vehicle Weight</u>				
<u>- in pounds -</u>				
5,000 and less	24,757	3,501	28,258	1,128
5,001 - 10,000	10,939	932	11,871	516
10,001 - 14,000	5,473	3,402	8,875	22
14,001 - 16,000	8,271	876	9,147	30
16,001 - 19,500	1,212	6	1,218	62
19,501 - 26,000	602	...	602	80
Over 26,000	378	4	382	69
Total Trucks	51,632	8,721	60,353	1,907
Total Coaches or Buses	351	...	351	10
Total Commercial Vehicles ..	51,983	8,721	60,704	1,917
TOTAL PASSENGER AND COMMERCIAL	148,111	17,387	165,498	6,980

Table 3 - Factory Shipments of Made-in-Canada Vehicles, by Months, 1947-1949

Month	1 9 4 7	1 9 4 8	1 9 4 9
	(Number of Units)		
January	18,700	16,715	13,863
February	20,331	16,382	17,197
March	22,491	27,112	25,566
April	21,891	24,243	26,685
May	21,665	21,368	26,708
June	21,137	23,362	30,096
July	21,907	15,106	25,383
Total - Seven Months	148,122	144,288	165,498
August	15,659	16,959	
September	24,205	23,775	
October	25,479	25,057	
November	23,240	26,794	
December	21,310	27,305	
Total	258,015	264,178	

STATISTICS CANADA LIBRARY
BIBLIOTHEQUE STATISTIQUE CANADA



1010641683