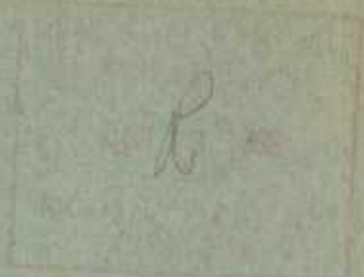


42-202 *old*

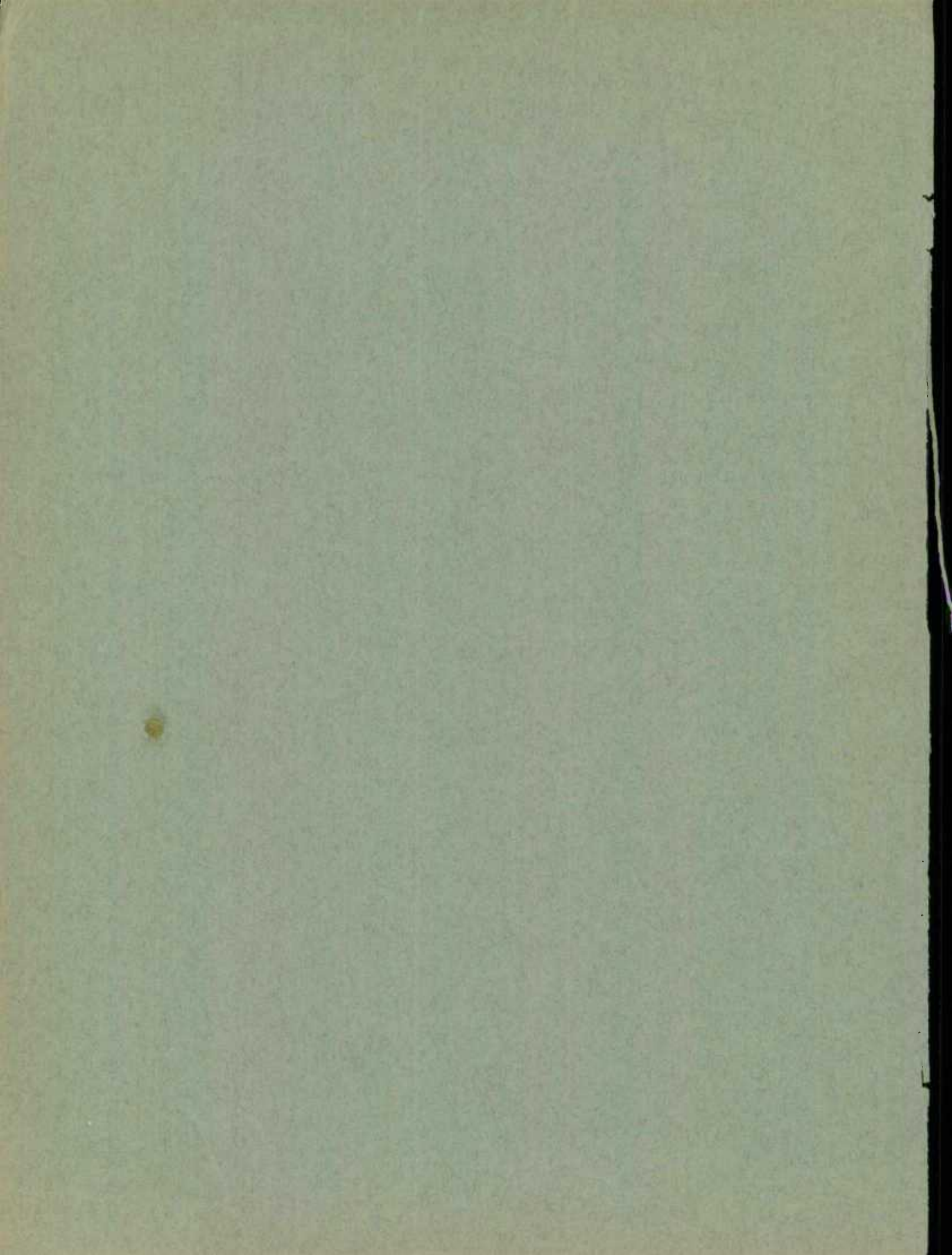


CANADA
DEPARTMENT OF TRADE AND COMMERCE
DOMINION BUREAU OF STATISTICS
CENSUS OF INDUSTRY
MINING, METALLURGICAL & CHEMICAL BRANCH

**THE FARM IMPLEMENTS AND
MACHINERY INDUSTRY
IN
CANADA
1935**

Published by Authority of the HON. W.D. EULER, M.P.,
Minister of Trade and Commerce.

OTTAWA
1935



Published by Authority of the HON. W. D. EULER, M.P.
Minister of Trade and Commerce.

DEPARTMENT OF TRADE AND COMMERCE
DOMINION BUREAU OF STATISTICS
CENSUS OF INDUSTRY
MINING, METALLURGICAL AND CHEMICAL BRANCH
OTTAWA - CANADA

Dominion Statistician: R. H. Coats, LL.D., F.R.S.C., F.S.S. (Hon.)
Chief - Mining, Metallurgical and Chemical Branch: W. H. Losee, B.Sc.

ANNUAL INDUSTRY REPORT

IRON AND STEEL AND THEIR PRODUCTS GROUP

THE FARM IMPLEMENTS AND MACHINERY INDUSTRY, 1935.

Production in Canada during 1935 by the factories which were engaged chiefly in the manufacture of farm implements and machinery was valued at \$13,692,476. This was the highest total reported for the industry since 1930 when the value of production reached \$26,902,139. The value of output in 1935 by concerns included in this group exceeded the \$8,817,756 reported for 1934 by 55 per cent.

Only 34 factories operated in the industry during 1935 and of these 25 were located in Ontario, 5 in Quebec, 3 in Manitoba and 1 in Prince Edward Island. In the previous year there were 35 plants in this group while in 1930-31 reports were received from 57 establishments.

Capital employed was reported at \$55,528,865 including \$17,330,540 as the value of land, buildings and equipment, \$15,708,103 as the value of inventories and \$22,490,222 as cash, bills and accounts receivable. The total capital of \$55,528,865 was around \$200,000 less than in 1934 but only slightly better than half the \$103 millions reported for 1929.

The average number of workers on the payroll during the year was 4,989 with salaries and wages at \$5,325,620. Corresponding data for 1934 showed an average employment of 3,706 persons at \$3,776,918.

Imports of agricultural machinery were appraised at \$5,493,428 during the calendar year 1935 compared with \$3,204,029 in the next preceding twelve month period. Exports and re-exports for the corresponding periods advanced to \$6,455,812 from \$3,351,220.

Apparent consumption of farm machinery in Canada, as calculated by deducting the exports from the sum of the production and the imports, was valued at \$12,730,092 in 1935, \$8,670,565 in 1934 and \$6,106,022 in 1933.

Table 1 - PRINCIPAL STATISTICS OF THE FARM IMPLEMENTS AND MACHINERY INDUSTRY, 1920 - 1935.

Years	No. of plants	Capital employed	Average number of employees	Salaries and wages	Cost of fuel and electricity at works	Cost of materials at works	Selling value of products at works
		\$		\$	\$	\$	\$
1920	99	110,868,713	12,838	16,941,987	1,062,337	22,588,390	50,301,302
1921	90	100,285,688	9,198	11,808,700	1,045,918	18,854,537	38,947,968
1922	73	92,566,964	6,221	7,084,947	450,436	7,967,767	18,240,381
1923	67	92,277,040	7,792	9,112,214	840,413	11,592,401	26,026,419
1924	63	82,877,387	6,700	8,192,861	605,614	11,700,644	26,447,171
1925	61	81,861,961	7,559	9,089,221	642,769	11,089,186	24,770,216
1926	69	78,947,274	10,091	12,636,915	835,088	18,160,336	38,269,214
1927	65	88,981,203	11,011	13,315,500	805,876	19,317,415	42,996,288
1928	66	91,142,820	10,867	13,599,953	721,123	17,607,861	41,199,841
1929	62	103,356,773	11,408	14,775,889	799,634	19,016,981	40,659,479
1930	57	98,684,828	7,405	9,564,049	661,392	11,353,523	26,902,139
1931	57	84,501,405	4,471	4,997,732	381,925	3,597,534	11,175,404
1932	47	73,576,979	2,758	3,097,975	262,571	1,907,768	5,510,078
1933	40	63,903,380	3,039	3,047,501	283,748	2,215,031	5,326,416
1934	35	55,742,696	3,706	3,776,918	368,292	3,632,821	8,817,756
1935	34	55,528,865	4,989	5,325,620	478,043	6,448,183	13,692,476

Table 2 - INDEX NUMBERS OF PRODUCTION OF FARM IMPLEMENTS AND MACHINERY, 1920 - 1935.

Years	INDEX NUMBER	
	Total Value(x)	Volume(xx)
1920	131	141
1921	102	97
1922	48	51
1923	68	69
1924	69	63
1925	65	68
1926	100	100
1927	112	112
1928	108	111
1929	106	112
1930	70	84
1931	29	25
1932	14	11
1933	14	15
1934	23	27
1935	36	46

(x) Selling value at works.

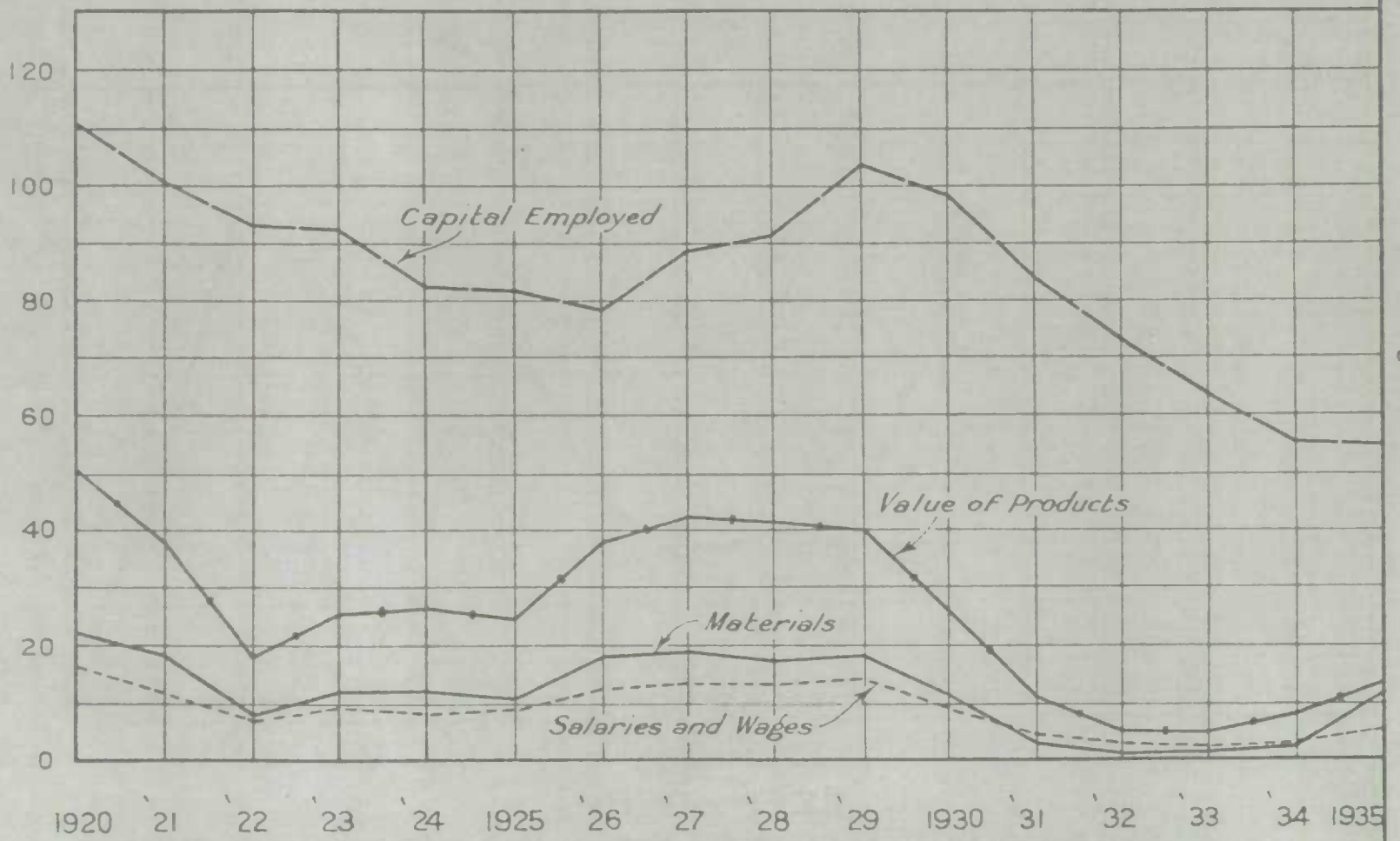
(xx) Based on 23 major items of production.

THE FARM IMPLEMENT INDUSTRY IN CANADA

1920 - 1935

MILLION

\$



TREND IN PRODUCTION OF FARM IMPLEMENTS IN CANADA

1920 - 1935

1926 = 100

INDEXES

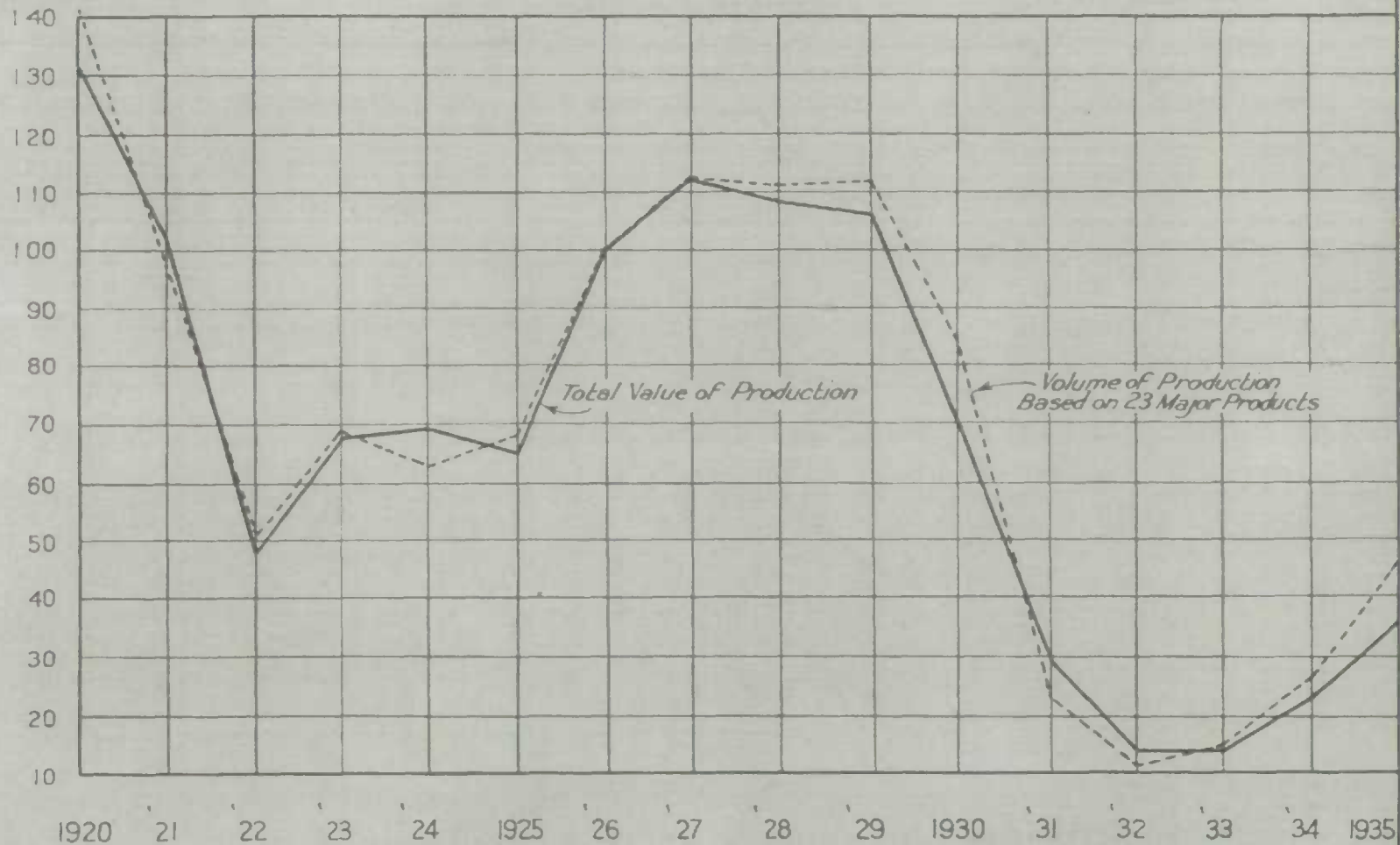


Table 3 - APPARENT CONSUMPTION OF FARM IMPLEMENTS AND MACHINERY IN CANADA, CALENDAR YEARS 1920 - 1935.

Years	Production of the Farm Implements and Machinery Industry (x) (Selling value at works) \$	IMPORTS \$	EXPORTS AND RE-EXPORTS \$	APPARENT CONSUMPTION (xx) \$
1920	50,301,302	23,123,201	12,197,994	61,226,509
1921	38,947,968	9,199,653	7,615,825	40,531,796
1922	18,240,381	7,752,217	5,041,044	20,931,554
1923	26,026,419	11,893,646	8,187,492	29,732,573
1924	26,447,171	6,585,750	11,356,258	21,676,663
1925	24,770,216	11,234,839	12,374,176	23,650,879
1926	38,269,214	17,630,949	17,002,590	38,897,573
1927	42,996,288	26,101,338	16,559,806	52,537,820
1928	41,199,841	39,893,490	14,560,412	66,532,919
1929	40,659,479	31,845,326	20,118,978	52,385,827
1930	26,902,139	21,944,231	10,435,973	38,410,897
1931	11,175,404	3,964,344	3,009,839	12,129,909
1932	5,510,078	2,204,646	1,595,815	6,118,909
1933	5,326,416	2,290,401	1,510,795	6,106,022
1934	8,817,756	3,204,029	3,351,220	8,670,565
1935	13,692,476	5,493,428	6,455,812	12,730,092

(x) The value of production for this industry includes some goods such as stoves, road machinery, etc., which cannot be classed as farm implements but on the other hand, some farm machinery was produced as secondary products by concerns in other industrial groups. It is estimated that these values counterbalance each other.

(xx) No account is taken of changes in factory stocks from year to year.

Table 4 - PRINCIPAL STATISTICS, BY PROVINCES, 1934 and 1935.

Provinces	No. of plants	Capital employed \$	Average number of em- ployees	Salaries and wages \$	Cost of fuel and electricity at works \$	Cost of materials at works \$	Selling value of products at works \$
<u>1934</u>							
Quebec	5	341,057	95	61,142	3,535	50,652	169,179
Ontario	27	54,883,149	3,543	3,637,057	355,606	3,467,137	8,363,135
Pr. Edward Island	1)						
Manitoba	2)	518,490	68	78,719	9,151	115,032	285,442
CANADA	35	55,742,696	3,706	3,776,918	368,292	3,632,821	8,817,756
<u>1935</u>							
Quebec	5	309,909	107	62,432	3,949	66,423	164,469
Ontario	25	54,674,771	4,799	5,161,589	464,013	6,220,163	13,142,562
Pr. Edward Island	1)						
Manitoba	3)	544,185	83	101,599	10,081	161,597	385,445
CANADA	34	55,528,865	4,989	5,325,620	478,043	6,448,183	13,692,476

Table 5 - ESTABLISHMENTS GROUPED ACCORDING TO PRODUCTION, NUMBER OF EMPLOYEES, and CAPITAL EMPLOYED, 1935.

	No. of plants	Capital employed	Average number of employees	Salaries and wages	Cost of fuel and electricity at works	Cost of materials at works	Selling value of products at works
		\$		\$	\$	\$	\$
(a) PRODUCTION							
Under \$10,000	4	82,348	17	9,318	844	4,600	21,768
\$10,000 to \$25,000	6	295,167	73	41,349	3,396	47,927	99,500
\$25,001 to \$50,000	4	595,395	85	65,880	2,758	42,985	150,970
\$50,001 to \$100,000 ...	4	602,690	81	82,351	2,856	126,493	309,145
\$100,001 to \$250,000 ..	7	5,513,000	473	472,129	27,384	393,900	1,066,138
\$250,001 to \$500,000 ..	3	3,472,223	476	453,283	40,183	447,906	1,151,998
Over \$500,000	6	44,968,042	3,784	4,201,310	400,662	5,384,372	10,892,957
TOTAL	34	55,528,865	4,989	5,325,620	478,043	6,448,183	13,692,476
(b) EMPLOYEES							
3 to 10	9	281,449	51	37,592	2,660	43,852	97,194
11 to 20	4	419,108	57	65,142	2,123	91,850	230,868
21 to 50	7	1,340,804	219	186,606	14,367	230,779	606,006
51 to 100	4	3,042,822	300	275,887	15,552	211,520	562,687
101 to 200	5	6,469,431	679	672,885	54,837	910,749	1,854,926
Over 200	5	43,975,251	3,683	4,087,508	388,504	4,959,453	10,340,795
TOTAL	34	55,528,865	4,989	5,325,620	478,043	6,448,183	13,692,476
(c) CAPITAL EMPLOYED							
Under \$25,000	4	45,545	18	10,047	1,004	17,766	37,061
\$25,000 to \$100,000 ...	9	518,730	125	85,126	5,534	87,708	212,376
\$100,001 to \$500,000 ..	8	1,770,279	254	251,552	15,630	298,819	817,315
\$500,001 to \$1,000,000.	5	4,211,727	602	560,110	43,617	816,155	1,609,092
\$1,000,001 to \$2,000,000	3	4,786,662	514	545,088	44,993	670,937	1,383,114
Over \$2,000,000	5	44,195,922	3,476	3,873,697	367,265	4,556,798	9,633,518
TOTAL	34	55,528,865	4,989	5,325,620	478,043	6,448,183	13,692,476

Table 6 - CAPITAL EMPLOYED, BY CLASSES AND BY PROVINCES, 1934 and 1935.

Provinces	Present value of lands, buildings, fixtures, machinery and tools	Inventory value of materials on hand, stocks in process and finished products on hand	Operating capital (cash, bills and accounts receivable, etc.)	TOTAL CAPITAL EMPLOYED
	\$	\$	\$	\$
1934				
Quebec	96,662	70,054	174,341	341,057
Ontario	17,472,254	14,568,625	22,842,270	54,883,149
Other provinces ...	220,295	204,265	93,930	518,490
CANADA	17,789,211	14,842,944	23,110,541	55,742,696
1935				
Quebec	76,277	67,399	166,233	309,909
Ontario	17,038,844	15,416,688	22,219,239	54,674,771
Other provinces ...	215,419	224,016	104,750	544,185
CANADA	17,330,540	15,708,103	22,490,222	55,528,865

Table 7 - EMPLOYEES, SALARIES AND WAGES, BY PROVINCES, 1934 and 1935.

Provinces	AVERAGE NUMBER OF EMPLOYEES					Salaries	Wages	TOTAL SALARIES AND WAGES
	On salaries		On wages		TOTAL			
	Male	Female	Male	Female				
						\$	\$	\$
1934								
Quebec	17	...	78	...	95	17,548	43,594	61,142
Ontario	417	124	2,957	45	3,543	1,035,376	2,601,681	3,637,057
Other provinces	17	3	48	...	68	37,183	41,536	78,719
CANADA	451	127	3,083	45	3,706	1,090,107	2,686,811	3,776,918
1935								
Quebec	21	...	86	...	107	24,063	38,369	62,432
Ontario	607	179	3,964	49	4,799	1,254,807	3,906,782	5,161,589
Other provinces	19	4	60	...	83	44,183	57,416	101,599
CANADA	647	183	4,110	49	4,989	1,323,053	4,002,567	5,325,620

Table 8 - WAGE-EARNERS, BY MONTHS, 1934 and 1935. (On the 15th of each month or nearest representative date)

Months	1934			1935		
	Male	Female	TOTAL	Male	Female	TOTAL
January	2,833	49	2,882	3,596	47	3,643
February	3,142	51	3,193	3,953	47	4,000
March	3,287	53	3,340	4,242	48	4,290
April	3,363	50	3,413	4,440	49	4,489
May	3,448	45	3,493	4,647	49	4,696
June	3,455	45	3,500	4,472	49	4,521
July	3,221	44	3,265	4,725	55	4,780
August	2,886	38	2,924	4,382	63	4,445
September	2,758	42	2,800	3,795	59	3,854
October	2,579	34	2,613	3,367	32	3,399
November	2,901	46	2,947	3,692	41	3,733
December	3,100	44	3,144	3,996	46	4,042
AVERAGE	3,083	45	3,128	4,110	49	4,159

Table 9 - FUEL AND ELECTRICITY USED, 1934 and 1935.

Kinds	Unit of measure	1934		1935	
		Quantity	Cost at works	Quantity	Cost at works
Bituminous coal - Canadian ..	short tons	1,602	9,771	1,359	8,761
Imported ..	short tons	26,822	130,581	30,707	159,978
Anthracite coal	short tons	113	1,256	140	1,700
Coke	short tons	185	1,811	298	2,897
Gasoline	Imp. gal.	16,187	3,240	23,619	4,452
Kerosene	Imp. gal.	410	81	985	180
Fuel oil	Imp. gal.	795,475	60,952	1,249,670	88,362
Wood	cords	661	1,966	823	2,589
Gas - Manufactured	M cu. ft.	68,932	23,777	132,824	38,762
Natural	M cu. ft.	4,338	2,477	6,368	3,624
Other fuel	xxx
Electricity	K.W.H.	10,594,606	132,380	15,140,725	166,738
TOTAL	xxx	...	368,292	...	478,043

Table 10 - POWER EQUIPMENT, 1934 and 1935.

	1 9 3 4		1 9 3 5	
	Number of units	Total rated horse power	Number of units	Total rated horse power
Steam engines and steam turbines	24	3,380	28	3,780
Gasoline, gas and oil engines	9	59	10	76
Hydraulic turbines or water wheels	3	111	3	116
Total Primary Equipment	36	3,550	41	3,972
Electric motors run by purchased power ..	1,223	18,126	1,407	19,813
TOTAL	1,259	21,676	1,448	23,785
Electric motors run by power generated by above primary units	10	72	10	72
Total Electric Motors	1,233	18,198	1,417	19,885
Boilers	50	6,130	52	6,405

Table 11 - POWER EQUIPMENT, 1935, SHOWING "ORDINARILY IN USE" SEPARATELY FROM "IN RESERVE OR IDLE"

	Ordinarily in use		In Reserve or Idle	
	Number of units	Total horse power rating	Number of units	Total horse power rating
Steam engines and steam turbines	25	3,255	3	525
Gasoline, gas and oil engines	9	66	1	10
Hydraulic turbines or water wheels	3	116
Total Primary Equipment	37	3,437	4	535
Electric motors run by purchased power ..	1,348	18,604	59	1,209
TOTAL	1,385	22,041	63	1,744
Electric motors run by above primary units	10	72
Total Electric Motors	1,358	18,676	59	1,209
Boilers	51	6,305	1	100

Table 12 - MATERIALS USED IN MANUFACTURING, 1934 and 1935.

Materials	Unit of measure	1 9 3 4		1 9 3 5	
		Quantity	Total cost at works	Quantity	Total cost at works
			\$		\$
Iron and Steel -					
Pig iron	long ton	6,750	134,267	13,705	269,940
Wrought iron bars, etc.	short ton	149	9,030	201	11,886
Malleable iron bars, etc.	short ton	29	4,727	57	10,103
Iron castings, all kinds	short ton	1,882	220,432	3,609	429,664
Steel (other than special alloy steel) -					
Castings purchased	short ton	544	65,150	224	34,523
Ingots, blooms and billets	short ton	2	160
Bars and rods and shafting	short ton	14,617	788,569	30,820	1,561,342
Plates	short ton	522	41,113	1,189	99,651
Sheets, plain	short ton	755	61,670	1,911	115,164
Sheets, galvanized	short ton	1,257	78,422	3,944	156,322
Structural shapes (angles, channels, etc.)	short ton	904	43,088	1,994	93,570
Wire	short ton	227	23,215	216	15,235
Alloy steel	short ton	25	11,909	46	21,348
Scrap iron and steel of all kinds ..	short ton	4,996	53,419	9,209	96,957
Other iron and steel	short ton	60	6,497	379	37,679

Table 12 - MATERIALS USED IN MANUFACTURING, 1934 and 1935 (concluded)

Materials	Unit of measure	1934		1935	
		Quantity	Total cost at works	Quantity	Total cost at works
			\$		\$
Other metals -					
Aluminium	lb.	9,013	2,794	9,478	2,692
Brass and bronze castings	lb.	191,278	21,809	190,876	17,271
Brass and bronze sheets, bars, etc. .	lb.	18,121	3,444	15,174	8,559
Copper sheets, bars, etc.	lb.	105,266	17,102	115,143	15,892
Lead	lb.	10,722	552	16,582	858
Tin	lb.	22,468	9,810	17,228	8,746
Zinc	lb.	90,811	5,059	103,702	5,766
Babbitt metals and solder	lb.	30,429	7,279	37,602	8,473
Other metals	XX	...	16,565	...	22,946
Articles used for further manufacture -					
Parts for machines or vehicles					
Iron and steel pipes, tubes and fittings	XX	...	473,802	...	951,727
Bolts, nuts, rivets and screws	XX	...	40,826	...	60,753
Electrical goods	XX	...	78,082	...	140,839
Paints, oils and varnishes	XX	...	22,267	...	45,161
Rubber and leather goods	XX	...	92,885	...	149,192
Wheels - wooden	No.	194	65,517	627	94,240
Wheels - metal	No.	28,444	667	45,758	1,311
Separator parts	XX	...	85,800	...	178,657
Cotton, duck and other textiles	XX	...	93,099	...	105,211
Other articles of this class	XX	...	109,884	...	265,053
Other material -					
Foundry coke (used in cupola; not for heat or power)					
Moulding and core sands	short ton	4,243	42,662	5,501	59,482
Plumbago	lb.	2,874	9,301	7,383	23,510
Other foundry facings	lb.	1,978	153	3,967	307
Patterns and models	XX	100,917	1,489	140,030	1,757
Lumber	M ft.b.m.	95
Firebrick	M	6,806	363,062	12,276	564,874
Fireclay	short ton	78	3,835	251	20,022
Cupola blocks	No.	300	5,554	665	6,911
Core oil	Imp. gal.	2,769	458	10,881	1,553
Core compounds	lb.	5,782	2,498	13,934	8,052
Shipping containers	XX	...	2,274	...	2,166
All other materials	XX	...	4,447	...	4,689
TOTAL	XX	...	430,729	...	525,390
TOTAL	XX	...	3,632,821	...	6,448,183

Table 13 - PRODUCTS MADE, 1934 and 1935.

Products	1934		1935	
	Number	Selling value at works	Number	Selling value at works
Farm Implements, horse and power -				
Tillage Implements -				
Cultivators	3,358	187,339	6,295	387,404
Harrow sections	6,698	18,565	14,544	56,631
Harrows, disc	2,764	100,277	5,395	199,929
Harrows, spike tooth	2,186	13,137	5,699	19,922
Harrows, spring tooth	3,135	46,156	4,333	63,460
Harrows, other	16	400	65	1,201

Table 13 - PRODUCTS MADE, 1934 and 1935 (concluded)

Products	1934		1935	
	Number	Selling value at works \$	Number	Selling value at works \$
Farm Implements, horse and power (concluded) -				
Tillage implements (concluded) -				
Harrow parts	Not separated	12,136
Land rollers, lawn rollers and plough packers	351	11,894	391	15,817
Ploughs, disc, all kinds	1,632	169,089	1,187	96,303
Ploughs, single, walking	20,462	200,781	25,006	241,493
Ploughs, single, sulky	441	16,914	485	17,960
Ploughs, gang, walking	3,678	138,154	4,714	179,124
Ploughs, gang, sulky	1,576	102,030	3,223	231,660
Ploughs, gang, tractor	639	54,858	1,283	109,538
Ploughs, hillside	1,412	18,814	1,260	13,808
Plough parts	Not separated	4,313
Harrow ploughs, one way discs, tiller combines	1,228	197,967	2,762	440,464
Scufflers	8,340	52,528	11,073	70,098
Weeders	546	28,090	189	11,729
Harvesting machines -				
Binders, corn	44	5,957	75	10,099
Binders, grain	7,253	1,122,829	16,177	2,403,099
Threshers and reaper-threshers	738	609,325	1,459	1,050,183
Thresher parts	Not separated	61,639
Other, including parts	1,496	...	1,042
Planting and seeding machines -				
Drills, seed	1,055	118,976	4,481	519,125
Planters, corn and potato	1,020	29,184	2,419	85,896
Seeders, other	3	675	131	5,436
Haying machines -				
Hay loaders	339	24,273	524	36,840
Hay rakes	4,155	121,255	5,340	141,468
Mowers	8,924	545,176	11,859	716,026
Other haying machines	14,169	...	17,047
Other farm implements and machinery -				
Cream separators	9,705	659,095	11,627	772,050
Ensilage and straw cutters	23	1,110	432	15,034
Fanning mills, grain cleaners and grain blowers	...	144,357	1,922	166,333
Grain grinders	743	39,749	1,456	78,823
Manure spreaders	1,488	159,631	1,738	185,368
Potato diggers	106	7,816	340	29,112
Pulpers and slicers	605	13,217	565	9,508
Sleighs, complete	1,367	49,546	2,613	95,041
Sprayers, power	515	105,223	102	34,655
Sprayers, other	1,277	16,870	1,607	31,153
Wagon and sleigh parts	39,333	...	66,685
Farm implements and machinery, not elsewhere specified (x)	528,570	...	696,118
Parts and accessories for farm implements and machinery	1,162,975	...	2,705,806
Amount received for custom work and repairs	1,343,335	...	971,229
All other products (xx)	596,221	...	614,671
TOTAL	8,817,756	...	13,692,476

(x) Includes rebuilt threshers, dairy equipment, churns, milking machines, transplinters, trussers, incubators and other such equipment which were reported by only 1 or 2 companies and cannot be itemized separately.

(xx) Includes road-making machinery, warehouse trucks, gasoline engines, stoves, pumps, washing machines and other such articles made as secondary products by concerns in this group.

Table 14 - EXPORTS OF FARM IMPLEMENTS AND MACHINERY FROM CANADA, 1934 and 1935.

	1934		1935	
	Quantity	Value	Quantity	Value
	No.	\$	No.	\$
(a) EXPORTS				
Cream separators and parts	42,428	...	66,154
Milking machines and parts	68,540	...	95,538
Harvesters and binders	1,681	281,685	3,580	640,308
Hay rakes	577	15,917	1,670	50,302
Mowing machines	1,929	114,615	4,310	263,126
Reaper-threshers	288	310,073	624	548,683
Cultivators	5,209	91,608	8,563	254,114
Drills	813	111,506	1,638	217,854
Harrows, disc, and parts	54,834	...	71,354
Harrows and parts, other	25,982	...	63,085
Ploughs, disc, and parts	171,220	...	130,368
Ploughs and parts, other	513,101	...	1,031,539
Seeders	41	2,596	84	7,088
Threshing machine separators and parts	123,372	...	576,898
Garden and farm tools	151,677	...	135,909
Spades and shovels and parts	dozen. 16,048	99,683	15,925	100,230
Other farm implements and machines	133,501	...	242,399
Other parts for farm implements and machines.	...	939,505	...	1,402,343
TOTAL	3,256,843	...	5,897,292
(b) RE-EXPORTS				
Farm implements and parts	94,577	...	558,520

Table 15 - IMPORTS INTO CANADA, EXPORTS AND RE-EXPORTS OF FARM IMPLEMENTS AND MACHINERY, BY PRINCIPAL COUNTRIES, 1934 and 1935.

Countries of origin for imports or of destination for exports	IMPORTS		EXPORTS AND RE-EXPORTS	
	1934	1935	1934	1935
	\$	\$	\$	\$
Argentina	104	11,373	620,730	1,097,584
Australia	317	71	169,175	150,503
Belgium	11,098	2,233	9,533	28,552
British South Africa	9	987,562	1,142,591
Chile	25,961	37,741
Denmark	6,458	1,211	38,554	48,479
Finland	1,870	152	1,349	772
France	1,512	2,884	54,303	36,379
French Africa	13,542	13,600
Germany	32,035	29,385	22,482	21,836
Great Britain	149,480	206,641	455,962	776,136
Irish Free State	287	3,449	9,365	11,008
Italy	18	53	14,365	10,166
Mexico	7,954	26,515
Morocco	4,575	2,857
New Zealand	135	102,732	207,395
Norway	2,560	8,077
Portuguese Africa	37,514	...
Sweden	137,155	178,924	6,806	20,364
United States	2,850,384	5,045,643	593,750	2,566,314
Uruguay	28,066	59,023
Other countries	13,311	11,263	144,380	189,920
TOTAL	3,204,029	5,493,426	3,351,220	6,455,812

Table 15 - IMPORTS INTO CANADA OF FARM IMPLEMENTS AND MACHINERY, 1934 and 1935.

Items	1934		1935	
	Quantity	Value	Quantity	Value
	No.	\$	No.	\$
Cream separators, steel bowls for	9,948	...	8,657
Cream separators, and complete parts, not elsewhere specified	12,305	408,540	11,299	296,289
Milking machines and attachments therefor, centrifugal machines for testing butter fat, milk or cream, and complete parts	13,633	...	23,012
Pasteurizers for dairy purposes, and complete parts	64	52,418	77	83,214
Power churns, power milk coolers, power butter printers, etc.	37,141	...	49,244
Forks, pronged	3,109	15,396	2,151	12,263
Harvesters, self-binding or not, and parts	448	68,080	953	175,659
Hay loaders and parts	3	177	57	4,499
Hay tedders and parts	8	448	64	4,596
Mowing machines and parts	471	26,299	792	48,582
Potato diggers, planters and parts	213	18,249	241	19,441
Rakes, horse, and parts	258	9,137	280	10,855
Rakes, n.o.p. dozen.	7,498	9,147	7,007	7,609
Reapers and parts	317	365	1,048
Scythes	2,366	15,253	2,572	17,178
Sickles or reaping hooks	696	1,804	741	2,010
Cultivators, horse hoes, scufflers, weeders and parts	49,713	...	53,370
Drills, seed, garden seeders and parts	2,642	26,483	...	33,426
Harrows, disc, and parts	1,737	...	17,088
Harrows and parts, other	14,444	...	29,560
Hoes	1,620	3,816	1,438	3,631
Ploughs, disc, and parts	2,223	...	3,032
Ploughs and parts, other	38,799	...	55,840
Rollers, farm, field, lawn or garden, and soil packers and parts	185	1,709	178	3,665
Fanning mills, pea viners and corn husking machines and parts	164	13,410	200	14,817
Harvesters in combination with threshing machine separators and complete parts	1	1,605	2	1,928
Threshing machine separators	36	31,014	14	8,290
Threshing machine separators, parts of, including wind stackers, baggers, weighers, and self-feeders therefor, and complete parts	28,059	...	10,386
Apparatus especially designed for sterilizing bulbs; pressure testing apparatus for determining maturity of fruit, and parts	507
Equipment for generating electric power for farm purposes only, viz., engine gas tank, generator, storage battery and switchboard, and complete parts	17,975	...	25,815
Fodder, feed or ensilage cutters and parts	435	58,490	251	52,641
Fruit and vegetable grading, washing and wiping machines and combination bagging and weighing machines, and complete parts	46,104	...	28,850
Grain crushers and grain or hay grinders and parts	641	55,336	101	16,050
Hay presses and parts	75	26,310	20	7,162
Knives, edging	127	759	89	432
Knives, hay or straw	52	350	88	700

Table 15 - IMPORTS INTO CANADA OF FARM IMPLEMENTS AND MACHINERY, 1934 and 1935.
(concluded)

Items	1 9 3 4		1 9 3 5	
	Quantity	Value	Quantity	Value
	No.	\$	No.	\$
Manure spreaders and parts	60	6,419	96	9,072
Post-hole diggers and parts	620	914	927	1,350
Spades and shovels of iron and steel, other -doz.	7,095	19,557	8,792	23,449
Spraying and dusting machines and parts, including hand sprayers and parts	52,669	...	59,396
Stumping machines and complete parts thereof	72	2	196
Traction ditching machines (not being ploughs) for use in ditching for tile drains on farms, valued by retail at place of production when new at not more than \$5,000 each, and complete parts	1	3,350	...	1,672
Traction engines, internal combustion, for farm purposes, valued at not more than \$1,400 each ..	476	306,566	2,208	1,752,886
Complete parts of traction engines, internal combustion, for farm purposes, valued at not more than \$1,400 each, and automobile traction attachment and parts	966,642	...	1,501,342
Other traction engines for farm purposes	23	48,875	36	82,132
Other parts of traction engines for farm purposes	18,316	...	9,566
Windmills and complete parts thereof not including shafting	21,352	...	18,787
Pruning hooks, shears, animal dehorning instruments and all other agricultural implements, not elsewhere provided for, and parts	46,925	...	66,997
Parts of agricultural implements for repairs	607,542	...	835,724
TOTAL	3,204,029	...	5,493,428

Table 16 - PRODUCTION OF PLOUGHS IN CANADA, 1930 - 1935. (Including some ploughs made in other industries and harrow ploughs, tiller combines or one-way discs)

Kinds	1930	1931	1932	1933	1934	1935
Disc	No. 2,911	903	851	1,098	1,632	1,187
	\$ 283,622	160,446	173,183	172,061	169,089	96,303
Single, walking	No. 23,083	14,194	9,759	10,952	20,462	25,006
	\$ 303,514	163,283	96,284	105,335	200,781	241,493
Gang, walking	No. 5,181	954	535	520	3,678	4,714
	\$ 199,669	42,125	17,822	21,228	138,154	179,124
Single, sulky	No. 11,379	1,162	314	213	441	485
	\$ 211,709	48,589	11,088	7,234	16,914	17,960
Gang, sulky	No. 8,032	442	1,086	276	1,576	3,223
	\$ 511,032	31,847	55,775	11,888	102,030	231,660
Gang, tractor	No. 22,414	3,383	608	402	639	1,283
	\$ 2,180,173	378,894	57,977	26,437	54,858	109,538
Hillside	No. 598	290	210	841	1,412	1,260
	\$ 8,931	3,737	3,132	9,504	18,814	13,808
All other, including harrow plough combines	No. 3,927	1,534	1,142	1,267	1,228	2,762
	\$ 196,486	55,950	48,366	60,152	197,967	440,464
TOTAL	No. 77,525	22,862	14,505	15,669	31,068	39,920
	\$ 3,895,136	884,871	463,627	413,839	898,607	1,330,350

Table 17 - APPARENT CONSUMPTION(x) OF PLOUGHS IN CANADA, 1930 - 1935.

	1930	1931	1932	1933	1934	1935
PRODUCTION No.	77,525	22,862	14,505	15,669	31,068	39,920
(Ploughs) \$	3,895,136	884,871	463,627	413,839	898,607	1,330,350
IMPORTS						
(Ploughs and parts) ... \$	1,797,886	43,454	44,906	10,481	41,022	58,872
EXPORTS						
(Ploughs and parts) ... \$	2,369,684	355,128	238,951	254,626	689,321	1,161,907
APPARENT CONSUMPTION ... \$	3,323,338	573,197	269,582	169,694	250,308	227,315

Table 18 - APPARENT CONSUMPTION(x) OF MOWERS IN CANADA, 1930 - 1935.

	1930	1931	1932	1933	1934	1935
PRODUCTION No.	17,675	8,340	4,155	3,796	8,924	11,859
(Hay mowers) \$	1,026,677	511,392	209,832	202,955	545,176	716,026
IMPORTS						
(Mowing machines and parts) No.	866	314	110	244	471	792
..... \$	93,530	21,918	13,337	15,691	26,299	48,582
EXPORTS No.	8,559	3,120	826	416	1,929	4,310
(Mowing machines) \$	524,837	168,708	42,594	23,664	114,615	263,126
APPARENT CONSUMPTION No.	9,982	5,534	3,439	3,624	7,466	8,341
..... \$	595,370	364,602	180,575	194,982	456,860	501,482

Table 19 - PRODUCTION OF HARROWS IN CANADA, 1930 - 1935. (Includes some harrows made in other industries but excluding harrow ploughs, tiller combines or one-way discs)

Kinds	1930	1931	1932	1933	1934	1935
Disc No.	12,198	4,039	1,335	1,313	2,764	5,395
..... \$	777,475	216,031	46,788	103,327	100,277	199,929
Spike tooth No.	6,112	2,052	234	570	2,186	5,699
..... \$	49,365	12,758	3,549	3,445	13,137	19,922
Spring tooth No.	5,304	2,243	1,218	1,213	3,155	4,333
..... \$	110,693	31,787	18,027	17,730	46,156	63,460
Kind not specified No.	...	344	301	200	16	65
..... \$...	20,000	21,025	7,680	400	1,201
TOTAL No.	23,614	8,678	3,088	3,296	8,101	15,492
..... \$	937,533	280,576	89,389	132,182	159,970	284,512

Table 20 - APPARENT CONSUMPTION(x) OF HARROWS IN CANADA, 1930 - 1935.

	1930	1931	1932	1933	1934	1935
PRODUCTION No.	23,614	8,678	3,088	3,296	8,101	15,492
(Harrows) \$	937,533	280,576	89,389	132,182	159,970	284,512
IMPORTS						
(Harrows and parts) ... \$	560,791	33,823	7,396	3,885	16,181	46,648
EXPORTS						
(Harrows and parts) ... \$	190,499	51,381	24,422	39,149	80,816	134,439
APPARENT CONSUMPTION ... \$	1,507,825	263,018	72,363	96,918	95,335	196,721

(x) The estimate of APPARENT CONSUMPTION is incorrect to the extent that changes in factory and warehouse stocks have not been taken into consideration.

Table 21 - APPARENT CONSUMPTION(x) OF BINDERS IN CANADA, 1930 - 1935.

		1930	1931	1932	1933	1934	1935
PRODUCTION -							
(Grain binders)	No.	17,541	3,485	2,402	6,317	7,253	16,177
	\$	2,775,147	586,133	369,810	815,380	1,122,829	2,403,099
IMPORTS -							
(Harvesters, self-binding or not)	No.	3,053	263	452	400	448	953
	\$	1,598,873	52,476	94,436	71,462	68,080	175,659
EXPORTS -							
(Harvesters and binders)	No.	8,864	1,711	720	822	1,681	3,580
	\$	1,698,353	325,554	135,957	131,012	281,685	640,308
APPARENT CONSUMPTION	No.	11,730	2,037	2,134	5,895	6,020	13,550
	\$	2,675,667	313,055	328,289	755,830	909,224	1,965,450

Table 22 - APPARENT CONSUMPTION(x) OF THRESHERS AND REAPER-THRESHERS IN CANADA, 1930-1935.
(Including some threshers made in other industries)

		1930	1931	1932	1933	1934	1935
PRODUCTION -							
(Threshers and reaper-threshers)	No.	2,076	918	418	351	738	1,459
	\$	1,624,717	830,202	389,174	250,921	609,325	1,050,183
IMPORTS -							
(Threshing machine separators; and harvesters in combination with threshing machine separators)	No.	2,401	67	45	68	37	16
	\$	2,971,774	62,381	42,145	53,899	32,619	10,218
EXPORTS -							
(Reaper-threshers and threshing machine separators and parts)	\$	911,378	407,173	261,146	50,068	434,445	1,125,581
APPARENT CONSUMPTION	\$	3,685,113	485,410	170,173	254,752	207,499 (-)	65,180

Table 23 - APPARENT CONSUMPTION(x) OF SEED DRILLS IN CANADA, 1930 - 1935.

		1930	1931	1932	1933	1934	1935
PRODUCTION							
	No.	14,035	2,819	716	256	1,055	4,481
	\$	2,224,235	457,707	92,462	33,622	118,976	519,125
IMPORTS -							
(Seed drills, garden seeders and parts)	No.	4,305	1,121
	\$	653,622	55,884	7,196	12,251	26,483	33,426
EXPORTS -							
(Drills)	No.	3,204	603	492	190	813	1,638
	\$	503,948	81,617	69,198	32,607	111,506	217,854
APPARENT CONSUMPTION	No.	15,136	3,337
	\$	2,373,909	451,974	30,460	13,266	33,953	334,697

(x) See footnote on previous page.

NOTE - The minus quantity shown as APPARENT CONSUMPTION in Table 22 is probably due to the disposal of accumulated inventories

Table 24 - TOTAL VALUE OF IMPLEMENTS AND MACHINERY ON FARMS, ACCORDING TO 1931 CENSUS.

Provinces	Value	Per cent of total
Prince Edward Island	8,116,000	1.3
Nova Scotia	10,554,000	1.6
New Brunswick	13,252,000	2.0
Quebec	97,270,000	14.9
Ontario	151,928,000	23.4
Manitoba	54,847,000	8.4
Saskatchewan	185,510,000	28.5
Alberta	116,501,000	17.9
British Columbia	12,886,000	2.0
CANADA	650,664,000	100.0

Table 25 - NUMBERS OF SPECIFIED KINDS OF MACHINERY ON FARMS, BY PROVINCES, 1931 CENSUS

	Binders	Combines	Headers	Threshing Machines
Prince Edward Island	7,204	3,238
Nova Scotia	2,015	837
New Brunswick	3,814	3,260
Quebec	42,944	39,575
Ontario	124,561	8,490
Manitoba	45,883	355	130	10,107
Saskatchewan	129,177	6,019	2,833	27,046
Alberta	73,487	2,523	1,837	12,457
British Columbia	2,318	20	5	534
TOTAL - CANADA	431,403	8,917	4,805	105,555
	Cream Separators	Milking Machines	Gasoline Engines	Tractors
Prince Edward Island	8,140	27	4,193	176
Nova Scotia	19,392	41	2,848	424
New Brunswick	18,343	76	4,505	289
Quebec	90,003	827	36,251	2,417
Ontario	127,788	4,015	45,380	18,993
Manitoba	36,291	248	17,557	14,366
Saskatchewan	76,024	414	38,549	43,308
Alberta	48,421	366	26,938	23,985
British Columbia	6,841	405	3,544	1,402
TOTAL - CANADA	431,243	6,419	179,765	105,360
	Electric Motors	Motor Trucks	Automobiles	
Prince Edward Island	184	369	3,885	
Nova Scotia	437	1,704	10,297	
New Brunswick	501	1,126	10,425	
Quebec	3,311	5,152	26,877	
Ontario	9,604	14,586	125,716	
Manitoba	854	3,260	25,588	
Saskatchewan	1,702	10,938	65,094	
Alberta	1,087	7,319	42,817	
British Columbia	959	3,947	10,585	
TOTAL - CANADA	18,639	48,401	321,284	

LIST OF FIRMS INCLUDED IN THE FARM IMPLEMENTS AND MACHINERY INDUSTRY IN CANADA, 1935.

NOTE - This Directory is not intended to be a complete list of the manufacturers of farm implements and machinery. It is merely a list of the firms included in this industry which covers all concerns that made farm implements and machinery as their MAIN products in 1935.

Names of Firms

Location of Plants

PRINCE EDWARD ISLAND -

Hall Manufacturing & Cold Storage Co. Ltd. Summerside

QUEBEC -

Banville, Odilon, & Fils St. Octave de Metis
 Desjardins, Ltee. St. Andre de Kamouraska
 Dion et Frere Ste. Therese de Blainville
 La Cie Jutras, Ltee. Victoriaville
 Moody, Matthew, & Sons Co. Reg'd. Terrebonne

ONTARIO -

Bissell, T. E., Company Ltd. Elora
 Canadian Potato Machinery Co. Ltd. 16 Cooper St., Galt
 Cockshutt Plow Co. Ltd. Mohawk St., Brantford
 Deere, John, Plow Co. Ltd. Canal Bank, Welland
 De Laval Company Ltd., The 113 Park St., Peterborough
 Ebersol, John R. Mill St., Milverton
 Ernst Bros. Co. Ltd. Mount Forest
 Erie Iron Works Ltd. 116 Talbot St., St. Thomas
 Goodison, John, Thresher Co. Ltd. Essex and Mitton Sts., Sarnia
 Fleury's, J., Sons, Ltd. Wellington St., Aurora
 Frost and Wood Co. Ltd. 25 Chambers St., Smiths Falls
 Hergott Company Mildmay
 International Harvester Co. of Canada, Ltd. Sherman Ave. N., Hamilton
 Jamesway Ltd. Rosemount Ave., Weston
 Massey-Harris Company Ltd. Market St., Brantford
 Massey-Harris Company Ltd. 915 King St., Toronto (Head Office)
 New Perfection Sprayer Co. 65 Main St., Galt
 Renfrew Machinery Co. Ltd. Lochiel St., Renfrew
 Sawyer-Massey, Ltd. Wellington St. N., Hamilton
 Spramotor Ltd. 1109 York St., London
 Sunshine Waterloo Company Ltd. Sunshine Ave., Waterloo
 Waterloo Manufacturing Co. Ltd. 67 King St. S., Waterloo
 Watson, John, Mfg. Co. Ltd. Ayr
 White, George, & Sons Co. Ltd. Cabell St., London
 Wood, W. C., Co. Ltd. 2480 Dundas St. W., Toronto

MANITOBA -

Gregg Mfg. Co. Ltd. 661 Bowman Ave., Winnipeg
 Grey, A., & Son 621 Wall St., Winnipeg
 Hart-Emerson Company Ltd., The 1425 Whyte Ave., Winnipeg

1875

Received of the Treasurer of the State of New York
the sum of \$1000.00

for the purchase of land

in the town of ...

...

...

...

...

...

...

...

...

...

...

...

...

...

...

...

...

...

...

...

STATISTICS CANADA LIBRARY
BIBLIOTHÈQUE STATISTIQUE CANADA



1010642840