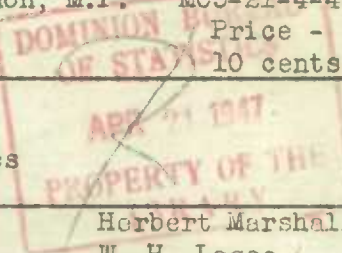


Department of Trade and Commerce
Dominion Bureau of Statistics
Mining, Metallurgical and Chemical Statistics
Ottawa - Canada

Dominion Statistician:
Director - Division of Census of Industry and Merchandising:
Chief - Mining, Metallurgical and Chemical Statistics:

Herbert Marshall
W. H. Losee
H. McLeod



DOMESTIC WASHING MACHINES

Historical File Copy

February, 1947.

Production of domestic type washing machines during February, 1947, amounted to 15,172 units, including 13,287 electric, 1,404 gasoline, and 481 hand-operated machines.

Imports into Canada during February totalled 3,433 units and exports 432 units.

Table 1 - Production in Canada, Factory Shipments and Factory Stocks of Washing Machines, February, 1946 and 1947, and Two Months Ended February, 1946 and 1947.

	Stocks at beginning of period	Made during period	Shipped during period	Stocks at end of period
	(Number of machines)			
<u>February, 1946</u>				
Electric	610	8,129	8,237	502
Gasoline	5	555	534	26
Hand	35	831	614	252
Total	650	9,515	9,385	780
<u>February, 1947</u>				
Electric	732	13,287	13,350	669
Gasoline	34	1,404	1,301	137
Hand	146	481	594	33
Total	912	15,172	15,245	839
<u>Two Months Ended February, 1946</u>				
Electric	559	15,851	15,908	502
Gasoline	35	1,023	1,032	26
Hand	26	1,583	1,357	252
Total	620	18,457	18,297	780
<u>Two Months Ended February, 1947</u>				
Electric	519	23,464	23,314	669
Gasoline	58	2,890	2,811	137
Hand	147	1,079	1,193	33
Total	724	27,433	27,318	839

Table 2 - Imports Into Canada and Exports of Washing Machines, February, 1947, and Year To Date

	February, 1947		Two Months Ended February, 1947	
	Number	\$	Number	\$
<u>Imports</u>				
Washing machines, domestic, electric .	5,162	253,041	6,067	473,427
Washing machines, domestic, power, not electric	271	22,290	620	48,354
Washing machines, domestic, hand- operated
Washing machine parts	22,708	...	52,088
<u>Exports</u>				
Washing machines, domestic, and parts.	432	29,409	1,085	82,230

STATISTICS CANADA LIBRARY
BIBLIOTHÈQUE STATISTIQUE CANADA



1010685115