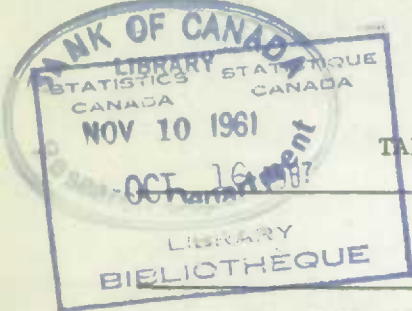




FACTORY SALES OF ELECTRIC STORAGE BATTERIES

SEPTEMBER, 1961

TABLE 1. Factory Sales of Electric Storage Batteries



Type	Number	Selling value at plant(1)
		\$
<u>September, 1961</u>		
For starting and/or ignition of internal combustion engines:		
(a) Automotive type (all types primarily to fit passenger cars regardless of application)		
(i) For initial installation	batteries 27,644	287,635
(ii) For replacement purposes	" 257,579	2,264,358
(b) Heavy-duty transport, motor coach and bus and diesel starting batteries (excluding marine):		
(i) For initial installation	" 918	12,133
(ii) For replacement purposes	" 6,319	125,704
(c) Marine	" 242	36,297
For farm lighting	cells 879	14,035
For railway service (excluding railroad signalling but including diesel starting, air conditioning, car lighting) ..	" 1,613	77,065
For direct motive power (industrial truck, mine locomotive, etc.)	" 2,992	187,969
For all other purposes (including aircraft, motorcycle, communication, etc.)	-	110,014
Parts and supplies	-	47,180
Total	-	3,162,390

(1) Factory selling value exclusive of sales tax or excise duties.

Note: Firms which report monthly account for more than 95 per cent of the total Canadian production of storage batteries.

Industry and Merchandising Division.

TABLE 2. Factory Sales of Electric Storage Batteries

Type	Number	Selling value at plant
		\$
<u>September, 1960</u>		
For starting and/or ignition of internal combustion engines:		
(a) Automotive types (all types primarily to fit passenger cars regardless of application)		
(i) For initial installation	batteries 23,502	264,026
(ii) For replacement purposes	" 260,483	2,475,326
(b) Heavy-duty transport, motor coach and bus and diesel starting batteries (excluding marine):		
(i) For initial installation	" 347	4,749
(ii) For replacement purposes	" 4,538	99,903
(c) Marine	" 193	9,550
For farm lighting	cells 1,277	25,291
For railway service (excluding railroad signalling but including diesel starting, air conditioning, car lighting) ..	" 872	52,306
For direct motive power (industrial truck, mine locomotive, etc.)	" 2,032	148,080
For all other purposes (including aircraft, motorcycle, communication, etc.)	-	135,630
Parts and supplies	-	46,704
Total	-	3,261,565

Note: Data on a comparable basis for previous year are not available because of changes in classification introduced as of January 1960.

TABLE 3. Factory Sales of Electric Storage Batteries
Nine Months Ended September

Type	1960		1961	
	Number	Selling value at plant(1) \$	Number	Selling value at plant(1) \$
For starting and/or ignition of internal combustion engines:				
(a) Automotive type (all types primarily to fit passenger cars regardless of application)				
(i) For initial installation	batteries 309,189	3,560,213	290,063	3,181,259
(ii) For replacement purposes	" 1,219,085	11,475,231	1,303,167	11,882,646
(b) Heavy-duty transport, motor coach and bus and diesel starting batteries (excluding marine):				
(i) For initial installation	" 3,864	57,222	9,513	129,645
(ii) For replacement purposes	" 34,474	740,903	47,326	930,457
(c) Marine	" 2,389	94,886	4,210	200,516
For farm lighting	cells 11,165	194,254	6,226	122,722
For railway service (excluding railroad signalling but including diesel start- ing, air conditioning, car lighting) ...	" 14,366	659,577	13,468	631,808
For direct motive power (industrial truck, mine locomotive, etc.)	" 20,942	1,421,929	23,992	1,617,132
For all other purposes (including air- craft, motorcycle, communication, etc.)	-	865,889	-	943,206
Parts and supplies	-	413,228	-	274,796
Totals	-	19,483,332	-	19,914,187

(1) Factory selling value exclusive of sales tax or excise duties.

STATISTICS CANADA LIBRARY
BIBLIOTHÈQUE STATISTIQUE CANADA



1010656068