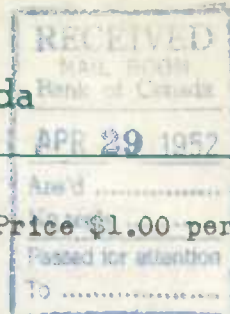


D.B.S. MEMORANDUM

Dominion Bureau of Statistics, Ottawa, Canada

7/4 back C.2

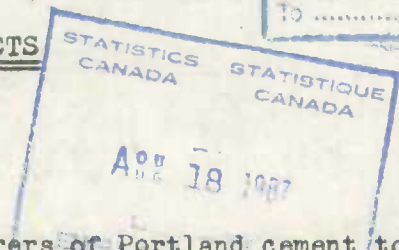


Vol.4-No.2



CEMENT AND CEMENT PRODUCTS

FEBRUARY - 1952



Shipments to customers by Canadian manufacturers of Portland cement totalled 1,174,596 barrels in February, 1952 compared with 850,556 barrels in January, 1952. In 1951 the February shipments amounted to 959,355 barrels, as against 886,979 barrels in January, 1951. Actual production for February, 1952 was 1,409,966 barrels, compared with 1,240,520 barrels in the corresponding month of 1951.

Table 1 - Production, Shipments and Stocks of Portland Cement

	February		Year to date	
	1951	1952	1951	1952
	(barrels)			
Stocks at plants and warehouses at beginning of period	1,110,478	1,366,666	744,422	870,849
Production	1,240,520	1,409,966	2,502,074	2,763,181
Shipments to customers	959,355	1,174,596	1,846,334	2,025,152
Used at plants	682	9,417	9,201	16,259
Stocks at plants and warehouses at end of period	1,390,961	1,592,619	1,390,961	1,592,619
Exports, February	27	...	34
Imports, February	35,972	(★)	84,348	(★)
January	48,376	3,594	48,376	3,594

(★) Not available.



The February output of concrete building materials included the following items: brick, 2,187,572 pieces; gravel blocks, 2,526,084 pieces; cinder blocks, 500,669 pieces; other aggregates, 283,478 pieces; chimney blocks, 39,207 pieces; pipe, 16,208 tons and concrete, ready-mixed, 47,311 cubic yards. These figures represent production by 133 of the principal manufacturers, which normally account for 85 per cent of the total Canadian output of concrete products.

Table 2 - Production and Factory Shipments of Specified Concrete Products

	1 9 5 1		1 9 5 2	
	Quantity made during period	Quantity shipped during period	Quantity made during period	Quantity shipped during period
<u>F e b r u a r y</u>				
Concrete brick	No. 3,319,712	2,803,223	2,187,572	1,911,227
Concrete blocks (except chimney blocks) -				
Gravel	No. 3,126,046	2,188,067	2,526,084	1,931,501
Cinder	No. 810,791	866,100	500,669	605,591
Other aggregates, (Haydite, slag, etc.)	No. 174,293	99,623	283,478	278,763
Concrete chimney blocks	No. 38,326	18,304	39,207	27,877
Cement drain pipe, sewer pipe, water pipe and culvert tile .	Tons 9,448	7,072	16,208	9,700
Concrete, ready-mixed	Cu.yds	Not available	47,311	49,317
<u>Two Months Ended February</u>				
Concrete brick	No. 7,025,659	5,649,259	3,446,442	2,967,342
Concrete blocks (except chimney blocks) -				
Gravel	No. 6,596,455	4,555,125	4,745,915	3,612,275
Cinder	No. 1,779,829	1,639,183	824,777	989,078
Other aggregates, (Haydite, slag, etc.)	No. 479,369	271,310	464,090	530,785
Concrete chimney blocks	No. 96,811	43,446	69,888	49,115
Cement drain pipe, sewer pipe, water pipe and culvert tile .	Tons 20,389	13,581	30,643	19,565
Concrete, ready-mixed	Cu.yds	Not available	72,756	75,535