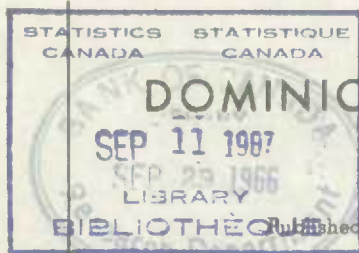


CATALOGUE No.

44-004

MONTHLY



## DOMINION BUREAU OF STATISTICS

OTTAWA - CANADA

Published by Authority of the Minister of Trade and Commerce

Vol. 18, No. 7

Price: 10 cents, \$1.00 a year

MINERAL WOOL

JULY 1966

TABLE 1. Production and Factory Shipments of Mineral Wool(1)

		Quantity made	Quantity shipped to		
			Eastern area(2)	Western area(3)	Canada total
<u>July 1966</u>					
Six-inch batts .....	sq. ft.	2,036,046	1,538,644	580,574	2,119,218
Four-inch batts .....	"	4,220,587	2,705,469	1,371,202	4,076,671
Three-inch batts .....	"	13,516,516	8,898,383	3,850,415	12,748,798
Two-inch batts .....	"	16,412,424	8,564,839	6,456,093	15,020,932
Granulated wool .....	cu. ft.	388,849	597,278	63,108	660,386
Bulk or loose wool ....	"	74,427	73,468	-	73,468
<u>Seven months ended</u> <u>July 1966</u>					
Six-inch batts .....	sq. ft.	9,019,726	6,715,759	2,395,729	9,111,488
Four-inch batts .....	"	21,807,747	14,512,454	6,499,085	21,011,539
Three-inch batts .....	"	79,350,581	54,111,239	20,409,847	74,521,086
Two-inch batts .....	"	114,471,877	64,197,696	46,129,391	110,327,087
Granulated wool .....	cu. ft.	3,201,744	3,233,196	482,917	3,716,113
Bulk or loose wool ....	"	596,582	601,335	9,460	610,795

(1) For building insulation only; does not include industrial type.

(2) Eastern area is the region east of the Manitoba-Ontario border.

(3) Western area is the region west of the Manitoba-Ontario border.

September 1966  
6507-824

Industry Division

ROGER DUMAMEL, F.R.S.C., Queen's Printer and Controller of Stationery, Ottawa



1010664445

- 2 -

TABLE 2. Imports of Glass Wool and Mineral Wool

January 1966

	cwt.	\$'000
Fibrous glass basic products ....	-	104
Mineral wool except glass wool ..	1,381	5

Source: Trade of Canada.

Note: Data carried in the report reflect the experience of the respondent firms listed in the January report. However, please note the following changes for the month under review.

NIL

In the case of the commodity contained herein, it is estimated that coverage is approximately 100%.