

44-004

44-004

D.B.S. MEMORANDUM

Dominion Bureau of Statistics, Ottawa, Canada

Vol.4-No.12

Price \$1.00 per year

MINERAL WOOLDecember, 1952

Table 1 - Production, Factory Shipments and Factory Stocks of Mineral Wool, 1952

	Stocks on hand at beginning of period	Made during period	Shipped during period	Stocks on hand at end of period
<u>December</u>				
Four-inch batts sq.ft.	113,600	339,137	286,372	157,317★
Three-inch batts sq.ft.	1,357,228	3,684,814	3,671,824	1,321,941★
Two-inch batts sq.ft.	1,845,207	12,051,073	11,703,869	2,222,464★
One-inch batts sq.ft.
Granulated wool cu.ft.	349,102	967,109	900,108	406,966★
Bulk or loose wool cu.ft.	48,867	152,806	141,343	60,330★

Twelve Months Ended December

Four-inch batts sq.ft.	3,138,639	3,045,327
Three-inch batts sq.ft.	39,306,633	39,342,603
Two-inch batts sq.ft.	115,786,558	115,330,370
One-inch batts sq.ft.	212,253★	212,253★
Granulated wool cu.ft.	9,742,077	9,713,917
Bulk or loose wool cu.ft.	1,254,219	1,241,316

★ Mineral wool for building insulation only; does not include other forms, such as pipe covering, refrigerator car insulation, stove, refrigerator and other appliance insulation, etc.

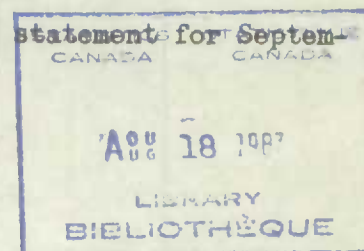
★ Amended to agree with final stocks at end of year.

Table 2 - Imports of Mineral Wool and Glass Wool, 1952

	Pounds	\$
<u>Mineral Wool</u>		
November	31,373	2,805
Eleven months ended November	612,603	81,215
<u>Glass Wool</u>		
November	42,666	20,052
Eleven months ended November	439,181	171,695

For a list of the Canadian producers of mineral wool, see the monthly statement for September, 1952.

6502-519
23-2-53





1010664790

44-004

ADUM

D.B.S.

Statistics Canada / Bibliothèque statistique Canada

Table 1. Summary of the results of the 1996 Census of the population and housing, by province and territory, and by sex and age group.				
Province or territory	Sex	Age group	Population	Population density
Alberta	Male	0-14	1,234,567	12.3
Alberta	Female	0-14	1,234,567	12.3
Alberta	Male	15-64	1,234,567	12.3
Alberta	Female	15-64	1,234,567	12.3
Alberta	Male	65+	1,234,567	12.3
Alberta	Female	65+	1,234,567	12.3
British Columbia	Male	0-14	1,234,567	12.3
British Columbia	Female	0-14	1,234,567	12.3
British Columbia	Male	15-64	1,234,567	12.3
British Columbia	Female	15-64	1,234,567	12.3
British Columbia	Male	65+	1,234,567	12.3
British Columbia	Female	65+	1,234,567	12.3
Manitoba	Male	0-14	1,234,567	12.3
Manitoba	Female	0-14	1,234,567	12.3
Manitoba	Male	15-64	1,234,567	12.3
Manitoba	Female	15-64	1,234,567	12.3
Manitoba	Male	65+	1,234,567	12.3
Manitoba	Female	65+	1,234,567	12.3
Ontario	Male	0-14	1,234,567	12.3
Ontario	Female	0-14	1,234,567	12.3
Ontario	Male	15-64	1,234,567	12.3
Ontario	Female	15-64	1,234,567	12.3
Ontario	Male	65+	1,234,567	12.3
Ontario	Female	65+	1,234,567	12.3
Quebec	Male	0-14	1,234,567	12.3
Quebec	Female	0-14	1,234,567	12.3
Quebec	Male	15-64	1,234,567	12.3
Quebec	Female	15-64	1,234,567	12.3
Quebec	Male	65+	1,234,567	12.3
Quebec	Female	65+	1,234,567	12.3
Saskatchewan	Male	0-14	1,234,567	12.3
Saskatchewan	Female	0-14	1,234,567	12.3
Saskatchewan	Male	15-64	1,234,567	12.3
Saskatchewan	Female	15-64	1,234,567	12.3
Saskatchewan	Male	65+	1,234,567	12.3
Saskatchewan	Female	65+	1,234,567	12.3
Atlantic	Male	0-14	1,234,567	12.3
Atlantic	Female	0-14	1,234,567	12.3
Atlantic	Male	15-64	1,234,567	12.3
Atlantic	Female	15-64	1,234,567	12.3
Atlantic	Male	65+	1,234,567	12.3
Atlantic	Female	65+	1,234,567	12.3

1010664790