

Issued June 27, 1924.

Published by Authority of Hon. Thos. A. Low, M.P.,  
Minister of Trade and Commerce.

52 001

DOMINION BUREAU OF STATISTICS  
TRANSPORTATION BRANCH  
OTTAWA

STATISTICS CANADA LIBRARY  
BIBLIOTHÈQUE STATISTIQUE CANADA



1010739089

Dominion Statistician, R.H. Coats, B.A., F.S.S., F.R.S.C.  
Chief, Transportation Branch, G.S. Wrong, B.Sc.

REVENUE CAR LOADINGS  
FOR

Week Ended June 21st, 1924

Car loading in Canada last week increased 1,414 cars, 653 cars in the eastern division and 761 in the western division.

In the eastern division merchandise loading was increased by 443 cars and coal by 300 cars. In the western division grain loading was increased by 544 cars, other forest products by 206 cars and miscellaneous freight by 264 cars.

Compared with the corresponding week last year car loading was heavier by 3,669 cars or 6.6 per cent.

CARS OF REVENUE FREIGHT LOADED ON CANADIAN RAILWAYS

TOTAL FOR CANADA

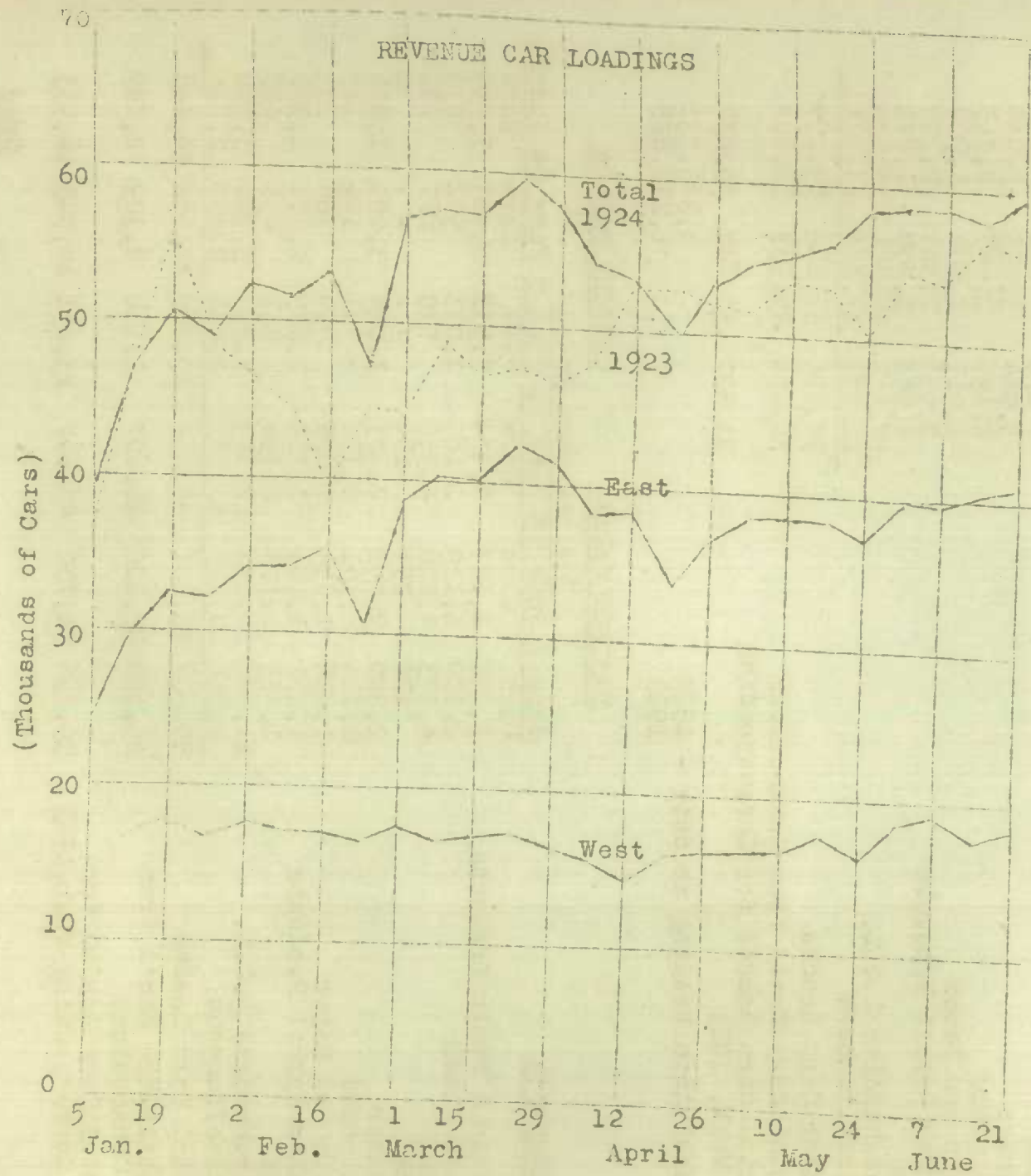
COMMODITY	For the Week Ended 1924		
	June 7 Cars	June 14 Cars	June 21 Cars
Grain and Grain Products	10,607	9,149	9,433
Live Stock	2,131	2,021	2,114
Coal	4,973	4,945	5,128
Coke	176	251	166
Lumber	3,964	3,993	3,904
Pulpwood	2,195	2,445	2,515
Pulp and Paper	1,917	1,982	1,908
Other Forest Products	2,656	2,364	2,700
Ore	1,946	1,599	1,811
Merchandise L.C.E.	15,528	15,781	16,139
Miscellaneous	12,753	13,355	13,481
Total Cars Loaded	58,826	57,885	59,299
Total Cars Rec'd from Connections	28,256	29,533	31,104
Total Cars Loaded for Corresponding Week, 1923	53,527	56,640	55,630
Cumulative Loading to date - 1924			1,343,731
			1,232,825

EASTERN CANADA

WESTERN CANADA

COMMODITY	For the Week Ended					
	June 7 Cars	June 14 Cars	June 21 Cars	June 7 Cars	June 14 Cars	June 21 Cars
Grain & Grain Products	3,055	2,664	2,404	7,552	6,485	7,029
Live Stock	1,100	1,119	1,181	1,031	902	933
Coal	4,273	4,068	4,368	700	877	760
Coke	176	251	164	-	-	2
Lumber	2,940	2,992	2,883	1,024	1,001	1,021
Pulpwood	2,104	2,301	2,370	91	144	145
Pulp and Paper	1,818	1,814	1,805	99	168	103
Other Forest Products	1,257	1,183	1,313	1,379	1,181	1,387
Ore	1,433	1,104	1,356	513	495	455
Merchandise L.C.L.	11,562	11,800	12,243	3,966	3,981	3,896
Miscellaneous	9,239	10,905	10,767	2,814	2,450	2,714
Total Cars Loaded	39,657	40,201	40,854	19,169	17,684	18,445
Total Cars Rec'd from Connections	26,168	27,224	28,807	2,118	2,309	2,297
Total Cars Loaded for Corresponding Week, 1923	39,856	41,700	40,697	13,671	14,940	14,933

Over



2