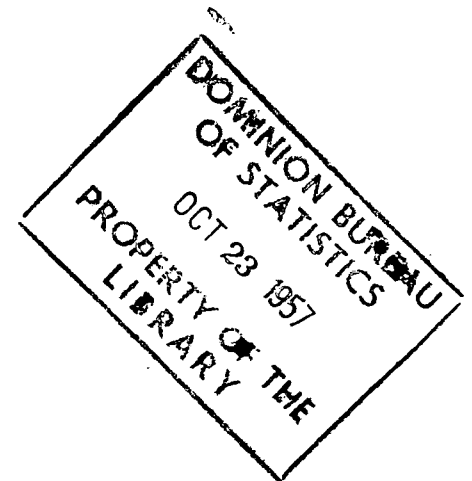




CANADA

**TRAVEL BETWEEN CANADA
AND
THE UNITED STATES**

SEPTEMBER, 1957



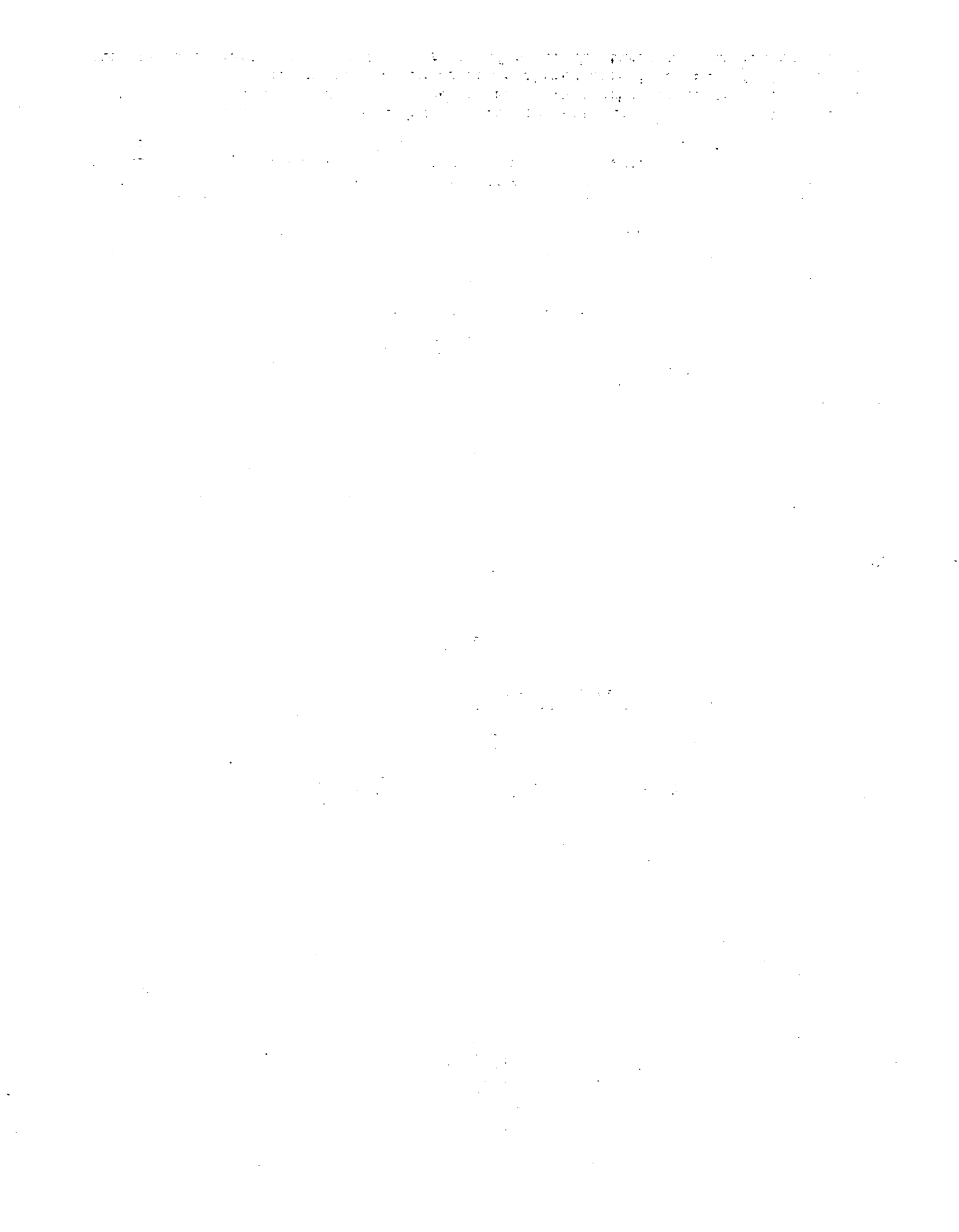
Published by Authority of
The Honourable Gordon Churchill, Minister of Trade and Commerce

DOMINION BUREAU OF STATISTICS
International Trade Division
Balance of Payments Section

7503-502-97

Price \$2.00 per year
20 cents per copy

Vol. 13, No. 9



Travel Between Canada and the United States

September, 1957

1. Highway Traffic - September, 1957

The volume of highway traffic crossing the border between Canada and the United States declined 2 per cent in September when compared with the corresponding month of 1956. Total border crossings into Canada numbered 1,672,200 as compared with 1,713,600 in September of last year, a decrease of 41,400 vehicles. With Labour Day falling so early in the month, residents of the United States taking the long week-end as a holiday may have entered Canada in August, whereas such entries are usually recorded in the month of September. If the months of August and September as a unit are compared with the same period of last year, there is an increase amounting to nearly 3 per cent or approximately 112,000 crossings. The aggregate for September was made up of 869,500 foreign vehicles and 802,700 registered in Canada. The decline in foreign entries amounted to 7 per cent for the month but there was a gain of 3 per cent in the number of Canadian vehicles returning.

Foreign Vehicles

Entries of foreign vehicles declined some 64,200 crossings when compared with the same month of 1956. If the months of August and September are taken together and compared with the same period of last year, there was an increase of 43,600 crossings or approximately 2 per cent. Foreign traffic in September was comprised of 269,400 entries on travellers' vehicle permits, 564,800 non-permit or local entries and 35,300 commercial vehicles.

Foreign vehicles entering Canada on travellers' vehicle permits declined some 26,500 crossings in September or approximately 9 per cent as compared with the same month of 1956. For the months of August and September as a unit, there was an increase of 21,700 crossings or between 2 and 3 per cent for the period. Cumulative data for the first nine months show a gain of 76,500 crossings or between 3 and 4 per cent when compared with the same period of 1956. All provinces show an increase in the number of entries for the cumulative period with the exception of British Columbia where a small decline was recorded.

Entries of non-permit or local traffic declined about 6 per cent in September as compared with the same month of 1956. Cumulative data for the period of January to September inclusive show a gain of 4 per cent over 1956. Entries of commercial vehicles were 2 per cent lower in September and 3 per cent higher in the cumulative period.

Canadian Vehicles

Re-entries of vehicles registered in Canada were 3 per cent heavier in September than in the same month of last year, the increase amounting to 22,700 crossings. Vehicles returning from the United States were comprised of 152,700 units abroad for more than 24 hours, 601,800 abroad for 24 hours or less and 48,100 commercial vehicles.

The volume of long-term Canadian traffic abroad for more than 24 hours was practically unchanged from last year, the increase amounting to some 400 crossings or less than 1 per cent while cumulative data for the first nine months show a gain of 8 per cent or an additional 84,800 crossings for the period.

Short-term traffic abroad for 24 hours or less advanced 4 per cent in September and 7 per cent during the period of January-September inclusive. Re-entries of commercial vehicles registered in Canada declined some 6 per cent in September, whereas an increase of 2 per cent was recorded for the first nine months of 1957.

11. Traffic By Long Distance Common Carrier - August, 1957.

Traffic crossing the border between Canada and the United States by long distance common carrier was between 7 and 8 per cent heavier in August than in the same month of last year. Aggregate crossings into Canada numbered 500,800 in comparison with 465,600 in August 1956, a gain of 35,200 crossings during the month. Foreign entries advanced between 13 and 14 per cent while re-entries of residents of Canada declined some 2 per cent. Data on foreign entries by bus have been affected for the months of June - August inclusive, due to the termination of the ferry service between Buffalo, New York and Crystal Beach, Ontario. Entries which were formerly treated as local traffic have been included with long distance bus thereby showing an abnormally heavy rate of increase for this type of transportation.

Foreign Travellers

The number of non-residents entering Canada by rail, long distance bus, boat and plane advanced from 289,500 in August 1956 to 328,800 in August 1957 or approximately 39,300 visits. Over 80 per cent of this increase appeared in the entries by bus at Fort Erie due to termination of the service referred to in the above paragraph. Entries by plane advanced 18 per cent and boat entries were 3 per cent heavier. There was a decline of between 7 and 8 per cent in the number of arrivals by rail.

Cumulative data for the first eight months show a gain of 13 per cent in the number of arrivals by common carrier. Entries by rail were 1 per cent lower while plane and boat traffic increased 14 per cent and 7 per cent respectively.

Canadian Travellers

Residents of Canada returning from the United States by common carrier numbered 172,000 in August as compared with 176,100 in the same month of 1956, a decline of around 4,100 visits. Re-entries by plane advanced 19 per cent while bus traffic was between 3 and 4 per cent higher. Declines of 20 per cent and 10 per cent were recorded in the number of persons returning by boat and rail.

Cumulative data for the first eight months show a gain of less than 1 per cent in the number of Canadians returning from the United States by common carrier. Re-entries by train and boat declined 6 per cent and 9 per cent respectively, while the number of persons returning by bus and plane advanced 2 per cent and 12 per cent.

STATEMENT BY PORTS OF HIGHWAY TRAFFIC AT CANADIAN BORDER POINTS

SEPTEMBER

1957

Port of Entry	Foreign Vehicles Entering Canada			Canadian Vehicles Returning to Canada		
	Non-Permit Class (Local Traffic)	Travellers' Vehicle Permits	Commercial Vehicles	Length of Stay Abroad		Commercial Vehicles
				24 hours or less	Over 24 hours	
Vehicles transported by boat direct from the United States*	1	1,473	38	61	403	20
			Newfoundland Prince Edward Island Nova Scotia			
			New Brunswick			
Andover	4,891	1,499	180	7,540	113	573
Beaconsfield	137	50	46	125	3	39
Belleville	95	57	10	316	14	98
Bloomfield	214	74	62	438	5	135
Campobello	253	21	50	615	25	221
Centreville	1,852	727	221	2,923	141	330
Clair	6,638	1,339	528	9,652	1,266	740
Edmundston	31,401	2,240	2,853	32,715	2,111	1,867
Fairhaven	21	25	1	80	8	3
Forest City	426	53	32	515	-	114
Fosterville	397	98	5	1,005	10	82
Four Falls	83	54	3	224	2	68
Gillespie	3,553	787	83	2,189	30	110
Grand Falls	2,714	403	124	4,184	41	363
Mars Hill Road	105	93	17	137	5	21
Milltown	6,614	238	232	9,569	210	600
River de Chute	312	238	15	334	2	37
St. Andrews	-	-	-	-	-	-
St. Croix	5,412	1,151	344	7,042	1,731	391
St. Leonard	16,943	2,346	1,034	14,869	1,380	1,242
St. Stephen	43,660	4,771	2,783	40,329	11,048	2,860
Union Corner	73	63	2	252	2	44
Union Mills	4,850	50	280	6,778	173	488
Woodstock Road	9,155	1,629	342	13,204	786	792
Provincial Total	139,799	18,006	9,247	155,035	19,106	11,218

* As Newfoundland, Prince Edward Island, and Nova Scotia have no ports of entry adjacent to the United States boundary, vehicles proceeding to these provinces (with the exception of those transported direct from the United States by boat) enter through ports in other provinces and are recorded in the latter.

Port of Entry	Foreign Vehicles Entering Canada			Canadian Vehicles Returning to Canada		
	Non-Permit Class (Local Traffic)	Travellers' Vehicle Permits	Commercial Vehicles	Length of Stay Abroad		Commercial Vehicles
				24 hours or less	Over 24 hours	
			Quebec			
Abercorn	2,686	1,893	466	3,441	303	290
Armstrong	143	3,816	188	678	2,355	320
Arnold Bog	-	-	-	-	-	-
Beebe	8,598	308	343	7,053	633	283
Blackpool	3,946	11,119	2,178	26,834	11,718	2,394
Chartierville	629	389	47	607	320	86
Clarenceville	133	143	11	787	84	23
Comins Mills	1,504	642	97	1,493	379	363
Covey Hill	430	133	17	618	21	47
Daaquam	370	71	214	280	184	141
Dundee	4,088	665	178	3,686	459	587
East Pinnacle	149	254	8	583	15	26
Estcourt	1,417	41	29	2,163	45	53
Franklin Centre	273	126	13	252	24	19
Frelighsburg	706	997	229	642	108	23
Glen Sutton	426	584	163	887	31	136
Hemmingford	1,883	398	175	2,998	263	217
Herdman	1,807	291	88	2,583	218	75
Hereford Road	1,039	288	132	934	77	164
Highwater	2,240	1,758	730	2,634	3,369	584
Jamieson's Line	393	35	96	334	72	94
Lac Frontière	115	14	4	181	163	102
Lacolle	3,970	3,982	695	14,363	7,405	1,216
Landry Siding	-	-	-	-	-	-
Leadville	44	17	16	96	2	12
Mansonville	27	7	7	54	-	9
Magalloway Road	9	-	-	10	1	23
Morses Line	124	366	33	281	22	16
Noyan	987	468	78	1,411	730	75
Philipsburg	743	6,413	550	5,322	6,116	592
Rivière Bleue	-	-	-	-	-	-
Rock Island	11,047	4,854	976	11,934	3,646	1,071
Ste Aurélie	81	11	37	188	36	124
St Cyprien	62	6	-	41	4	268
St Pamphile	395	20	344	646	195	211
Stanhope	766	3,468	506	5,709	3,552	897
Trout River	3,807	1,820	136	7,194	2,590	266
Woburn	802	623	89	1,237	837	193
Provincial Total	55,839	46,020	8,873	108,154	45,977	11,000

Port of Entry	Foreign Vehicles Entering Canada			Canadian Vehicles Returning to Canada		
	Non-Permit Class (Local Traffic)	Travellers' Vehicle Permits	Commercial Vehicles	Length of Stay Abroad		Commercial Vehicles
				24 hours or less	Over 24 hours	
			Ontario			
Cornwall	6,099	3,782	983	13,986	1,749	1,556
Courtright	-	-	-	-	-	-
Fort Erie	103,506	37,257	2,872	32,578	3,686	3,422
Fort Frances	5,207	4,921	151	6,721	467	894
Kingston	84	319	1	114	112	20
Kingsville	-	16	-	-	-	-
Lansdowne	5,023	10,541	879	6,856	5,354	1,152
Leamington	-	16	-	-	-	-
Midland	-	1	-	-	-	-
Niagara Falls	71,934	37,105	1,613	89,249	10,869	2,095
Pelee Island	-	24	1	-	1	-
Pigeon River	2,417	3,300	233	1,911	1,948	83
Port Lambton	708	342	2	810	122	3
Prescott	1,781	1,955	50	3,975	1,229	88
Rainy River	52	272	1	204	23	8
Sarnia	14,649	15,564	2,615	18,597	5,010	967
Sault Ste. Marie	4,646	5,976	90	6,411	3,390	407
Sombra	866	332	4	609	141	46
Walpole Island	613	139	1	203	15	6
Windsor	128,514	38,530	2,909	69,808	8,017	8,986
Provincial Total	346,099	160,392	12,405	252,032	42,133	19,733

Port of Entry	Foreign Vehicles Entering Canada			Canadian Vehicles Returning to Canada		
	Non-Permit Class (Local Traffic)	Travellers' Vehicle Permits	Commercial Vehicles	Length of Stay Abroad		Commercial Vehicles
				24 hours or less	Over 24 hours	
Manitoba						
Boissevain	522	860	24	637	1,527	86
Cartwright	153	216	1	260	35	-
Coulter	162	143	16	622	111	2
Crystal City	257	40	-	91	8	-
Emerson	2,117	2,937	752	4,203	6,392	1,032
Goodlands	91	34	4	389	48	3
Gretna	1,585	138	72	1,760	82	82
Haskett	321	74	5	652	45	26
Lena	188	134	6	618	49	6
Lyleton	196	49	-	361	20	1
Middlebro	14	2	1	43	1	1
North West Angle	-	-	-	-	-	-
Piney	80	111	15	499	74	69
Snowflake	79	20	-	323	3	1
South Junction	94	119	39	745	42	17
Tolstoi	143	97	18	224	108	29
Windygates	224	50	-	291	13	2
Provincial Total	6,226	5,024	953	11,718	8,558	1,357
Saskatchewan						
Big Beaver	63	44	22	399	106	6
East Poplar River	81	61	7	239	86	3
Elmore	246	107	10	856	52	6
Estevan	361	148	26	738	161	39
Mariantal	208	33	84	422	63	8
Monchy	53	99	6	90	209	-
Northgate	438	250	47	834	153	27
North Portal	1,046	834	228	3,122	1,095	466
Oungre	48	201	10	215	198	8
Regway	180	485	76	788	746	108
Treelon	78	59	3	158	154	7
West Poplar River	33	79	1	140	105	1
Willow Creek	41	46	6	112	246	19
Provincial Total	2,876	2,446	526	8,113	3,374	698
Alberta						
Aden	28	23	5	55	15	13
Carway	1,097	1,400	14	1,662	3,393	3
Chief Mountain	10	1,091	-	397	493	-
Coutts	1,339	1,429	627	2,703	2,945	827
Del Bonita	165	50	32	90	20	34
Wild Horse	59	98	30	131	242	37
Provincial Total	2,698	4,091	708	5,038	7,108	914

Port of Entry	Foreign Vehicles Entering Canada			Canadian Vehicles Returning to Canada		
	Non-Permit Class (Local Traffic)	Travellers' Vehicle Permits	Commercial Vehicles	Length of Stay Abroad		Commercial Vehicles
				24 hours or less	Over 24 hours	
British Columbia						
Aldergrove	642	1,524	203	2,575	944	92
Boundary Bay	1,306	90	86	9,654	1,072	90
Carson	459	160	29	299	20	-
Cascade City	209	475	20	2,998	214	211
Chopaka	28	68	8	78	25	-
Flathead	-	-	-	-	-	-
Huntingdon	1,750	3,025	179	7,752	1,170	221
Kingsgate	108	1,194	108	1,836	3,210	457
Midway	155	56	-	128	19	-
Nelway	288	500	80	739	605	134
Osoyoos	2,635	2,147	359	6,376	1,884	174
Pacific Highway	1,792	15,335	1,296	19,659	13,717	749
Paterson	359	636	171	6,015	606	319
Pleasant Camp	88	132	1	268	17	312
Powell River	-	1	-	-	-	-
Prince Rupert	-	31	-	-	-	-
Roosville	128	255	-	273	269	16
Rykerts	679	322	22	1,681	454	154
Sidney	-	1,375	-	86	704	-
Skagit	29	-	36	1	5	7
Stewart	540	-	4	871	-	123
Vancouver	-	26	-	-	-	-
Victoria	-	3,163	-	29	1,036	-
Waneta	41	39	3	150	22	12
Provincial Total	11,236	30,554	2,605	61,468	25,993	3,071
Yukon Territory						
Carcross	-	-	-	-	-	-
Little Gold Creek	10	48	-	19	10	21
Snag Creek	31	1,313	-	207	67	55
Provincial Total	41	1,361	-	226	77	76
Dominion Total	564,815	269,367	35,355	601,845	152,729	48,087

TABLE 1. SUMMARY BY PROVINCES OF HIGHWAY TRAFFIC AT CANADIAN BORDER POINTS
SEPTEMBER
1956 and 1957

A - Foreign Vehicles Entering Canada

Province of Entry	Non-Permit Class Local Traffic		Travellers' Vehicle Permits		Commercial Vehicles	
	1956	1957	1956	1957	1956	1957
Newfoundland	-	-) 1,344	1,473	(-	-
Nova Scotia	5	1)		(49	38
New Brunswick	134,815	139,799	19,788	18,006	8,746	9,247
Quebec	53,845	55,839	52,714	46,020	11,124	8,873
Ontario	388,629	346,099	175,827	160,392	11,089	12,405
Manitoba	6,591	6,226	4,944	5,024	649	953
Saskatchewan	3,380	2,876	2,686	2,446	583	526
Alberta	2,645	2,698	4,421	4,091	872	708
British Columbia	11,787	11,236	32,859	30,554	2,801	2,605
Yukon Territory	62	41	1,270	1,361	166	-
Total	601,759	564,815	295,853	269,367	36,079	35,355
<i>Percentage Change</i>		- 6.1		- 9.0		- 2.0

B - Canadian Vehicles Returning to Canada

Province of Entry	Length of Stay Abroad				Commercial Vehicles	
	24 hours or less		Over 24 hours			
	1956	1957	1956	1957	1956	1957
Newfoundland	-	-	-	-	-	-
Nova Scotia	42	61	377	403	23	20
New Brunswick	154,385	155,035	17,016	19,106	12,746	11,218
Quebec	101,664	108,154	43,911	45,977	13,102	11,000
Ontario	239,210	252,032	46,460	42,133	18,665	19,733
Manitoba	14,266	11,718	8,181	8,558	1,985	1,357
Saskatchewan	7,614	8,113	3,468	3,374	1,080	698
Alberta	6,596	5,038	8,761	7,108	1,067	914
British Columbia	52,417	61,468	24,034	25,993	2,641	3,071
Yukon Territory	133	226	53	77	25	76
Total	576,327	601,845	152,261	152,729	51,334	48,087
<i>Percentage Change</i>		+ 4.4		+ 0.3		- 6.3

TABLE 2. CUMULATIVE SUMMARY BY PROVINCES OF HIGHWAY TRAFFIC AT CANADIAN BORDER POINTS
JANUARY-SEPTEMBER
1956 and 1957

A - Foreign Vehicles Entering Canada

Province of Entry	Non-Permit Class Local Traffic		Travellers' Vehicle Permits		Commercial Vehicles	
	1956	1957	1956	1957	1956	1957
Newfoundland	-	-	10,911	11,059	-	-
Nova Scotia	65	46			297	484
New Brunswick	1,017,642	1,173,446	133,196	140,045	81,707	78,486
Quebec	412,196	457,186	345,091	354,333	85,432	87,007
Ontario	3,204,469	3,205,033	1,299,608	1,353,562	118,607	128,028
Manitoba	55,011	59,155	38,974	42,480	12,027	11,917
Saskatchewan	25,850	24,948	17,435	18,801	6,025	6,245
Alberta	26,181	19,528	44,600	45,692	6,854	6,184
British Columbia	101,386	92,741	243,103	242,519	21,927	26,069
Yukon Territory	807	723	6,872	7,780	1,046	127
Total	4,843,607	5,032,806	2,139,790	2,216,271	333,922	344,547
<i>Percentage Change</i>		+ 3.9		+ 3.6		+ 3.2

B - Canadian Vehicles Returning to Canada

Province of Entry	Length of Stay Abroad				Commercial Vehicles	
	24 hours or less		Over 24 hours		1956	1957
	1956	1957	1956	1957		
Newfoundland	-	-	-	1	-	-
Nova Scotia	358	364	2,123	2,354	224	325
New Brunswick	1,187,122	1,292,285	85,439	112,544	101,737	100,952
Quebec	866,199	947,968	304,732	335,676	134,287	137,860
Ontario	2,061,095	2,152,688	361,677	363,385	171,896	185,015
Manitoba	106,631	108,386	54,347	58,389	21,683	16,777
Saskatchewan	56,844	67,336	24,555	26,257	9,112	7,647
Alberta	54,058	41,990	55,040	50,436	10,002	8,360
British Columbia	469,951	511,556	166,811	190,319	23,621	24,388
Yukon Territory	1,175	1,990	318	531	228	1,231
Total	4,803,433	5,124,563	1,055,042	1,139,892	472,790	482,555
<i>Percentage Change</i>		+ 6.7		+ 8.0		+ 2.1

TABLE 3. FOREIGN TRAVELLERS ENTERING CANADA FROM THE UNITED STATES BY RAIL, BUS, BOAT AND PLANE,
BY PROVINCE OF ENTRY, AUGUST 1956 AND AUGUST 1957

Province of Entry	Rail ¹		Bus ²		Boat		Plane ³	
	1956	1957	1956	1957	1956	1957	1956	1957
	Newfoundland	-	-	-	-)	218	(
Nova Scotia	-	-	-	-)	165	(582
Prince Edward Island	-	-	-	-	-	-	11	4
New Brunswick	1,996	1,576	1,900	2,088	621	472	747	1,754
Quebec	13,593	13,009	10,573	15,609	1,281	1,839	8,701	9,908
Ontario	23,946	20,482	46,383	71,901	83,642	87,960	16,309	18,435
Manitoba	3,069	2,937	1,031	1,090	-	-	1,217	1,830
Saskatchewan	2,645	2,577	103	-	-	-	189	214
Alberta	135	140	467	2,054	-	-	1,083	2,774
British Columbia	5,739	6,211	5,661	5,972	45,914	45,114	6,749	7,556
Yukon Territory	2,305	2,491	219	-	-	2	1,615	1,614
Total	53,428	49,423	66,337	98,714	131,623	135,605	38,078	45,077

TABLE 4. CANADIAN TRAVELLERS RETURNING FROM THE UNITED STATES BY RAIL, BUS, BOAT AND PLANE,
BY PROVINCE OF ENTRY, AUGUST 1956 AND AUGUST 1957

Province of Entry	Rail		Bus ⁴		Boat		Plane	
	1956	1957	1956	1957	1956	1957	1956	1957
	Newfoundland	-	-	-	-)	47	(
Nova Scotia	-	-	-	-)	30	(358
Prince Edward Island	-	-	-	-	-	-	-	-
New Brunswick	1,550	1,775	2,742	3,211	2,352	2,185	371	696
Quebec	17,261	16,312	14,988	16,300	859	1,238	7,327	7,770
Ontario	25,118	20,742	31,395	32,721	17,112	12,676	11,696	14,858
Manitoba	2,138	2,126	5,122	4,578	-	-	451	541
Saskatchewan	874	837	162	42	-	-	52	34
Alberta	-	-	742	647	-	-	246	541
British Columbia	8,707	8,043	13,329	13,380	6,638	5,375	3,780	4,454
Yukon Territory	299	356	16	-	3	7	59	74
Total	55,947	50,191	68,496	70,879	26,994	21,528	24,653	29,374

Travellers by rail and bus destined to Nova Scotia and Prince Edward Island enter Canada through ports in other provinces and are recorded in the latter.

TABLE 5. CUMULATIVE SUMMARY OF FOREIGN TRAVELLERS ENTERING CANADA FROM THE UNITED STATES BY RAIL, BUS, BOAT AND PLANE, BY PROVINCE OF ENTRY, JANUARY - AUGUST 1956 AND JANUARY - AUGUST 1957

Province of Entry	Rail ¹		Bus ²		Boat		Plane ³	
	1956	1957	1956	1957	1956	1957	1956	1957
Newfoundland	-	-	-	-	-	-	(1,657	2,482
Nova Scotia	-	-	-	-) 670	885	(3,465	1,582
Prince Edward Island	-	-	-	-	-	-	36	109
New Brunswick	9,059	7,406	6,642	7,119	2,504	2,283	4,193	7,022
Quebec	85,794	85,543	38,584	46,199	3,445	4,632	54,437	61,086
Ontario	127,178	125,302	174,279	256,191	204,921	221,918	90,696	102,005
Manitoba	15,502	14,000	4,913	5,545	-	-	8,197	9,717
Saskatchewan	8,077	7,656	574	168	-	-	1,114	1,199
Alberta	1,055	1,050	2,471	5,672	-	-	8,502	14,568
British Columbia	29,393	31,235	24,221	26,505	123,368	127,790	33,491	36,011
Yukon Territory	7,725	8,495	402	-	2	2	8,214	7,160
Total	283,783	280,687	252,086	347,399	334,910	357,510	214,002	242,941

TABLE 6. CUMULATIVE SUMMARY OF CANADIAN TRAVELLERS RETURNING FROM THE UNITED STATES BY RAIL, BUS, BOAT, AND PLANE, BY PROVINCE OF ENTRY, JANUARY - AUGUST 1956 AND JANUARY - AUGUST 1957

Province of Entry	Rail		Bus ⁴		Boat		Plane	
	1956	1957	1956	1957	1956	1957	1956	1957
Newfoundland	-	-	-	-	-	-	(627	429
Nova Scotia	-	-	-	-) 189	218	(2,027	796
Prince Edward Island	-	-	-	-	-	-	54	47
New Brunswick	9,284	8,155	8,217	8,583	13,162	13,072	3,028	5,049
Quebec	109,025	94,008	58,450	59,605	1,737	2,904	61,353	67,935
Ontario	150,496	146,560	167,023	170,340	38,640	30,799	99,636	113,277
Manitoba	14,834	14,293	19,313	20,059	-	-	4,672	4,886
Saskatchewan	3,156	2,743	721	262	-	-	344	368
Alberta	-	-	4,023	3,673	-	-	3,208	5,122
British Columbia	44,076	44,926	62,861	65,482	22,276	22,425	27,932	28,860
Yukon Territory	1,050	1,331	115	-	14	7	500	504
Total	331,921	312,016	320,723	328,004	76,018	69,425	203,381	227,273

1. After deducting intransit passengers travelling across Southern Ontario. 2. Exclusive of local bus traffic between border communities, but including intransit traffic. 3. Yukon passengers are practically all intransit to and from Alaska. 4. Exclusive of local bus traffic between border communities.



STATISTICS CANADA LIBRARY
BIBLIOTHÈQUE STATISTIQUE CANADA



1010494123