

C3

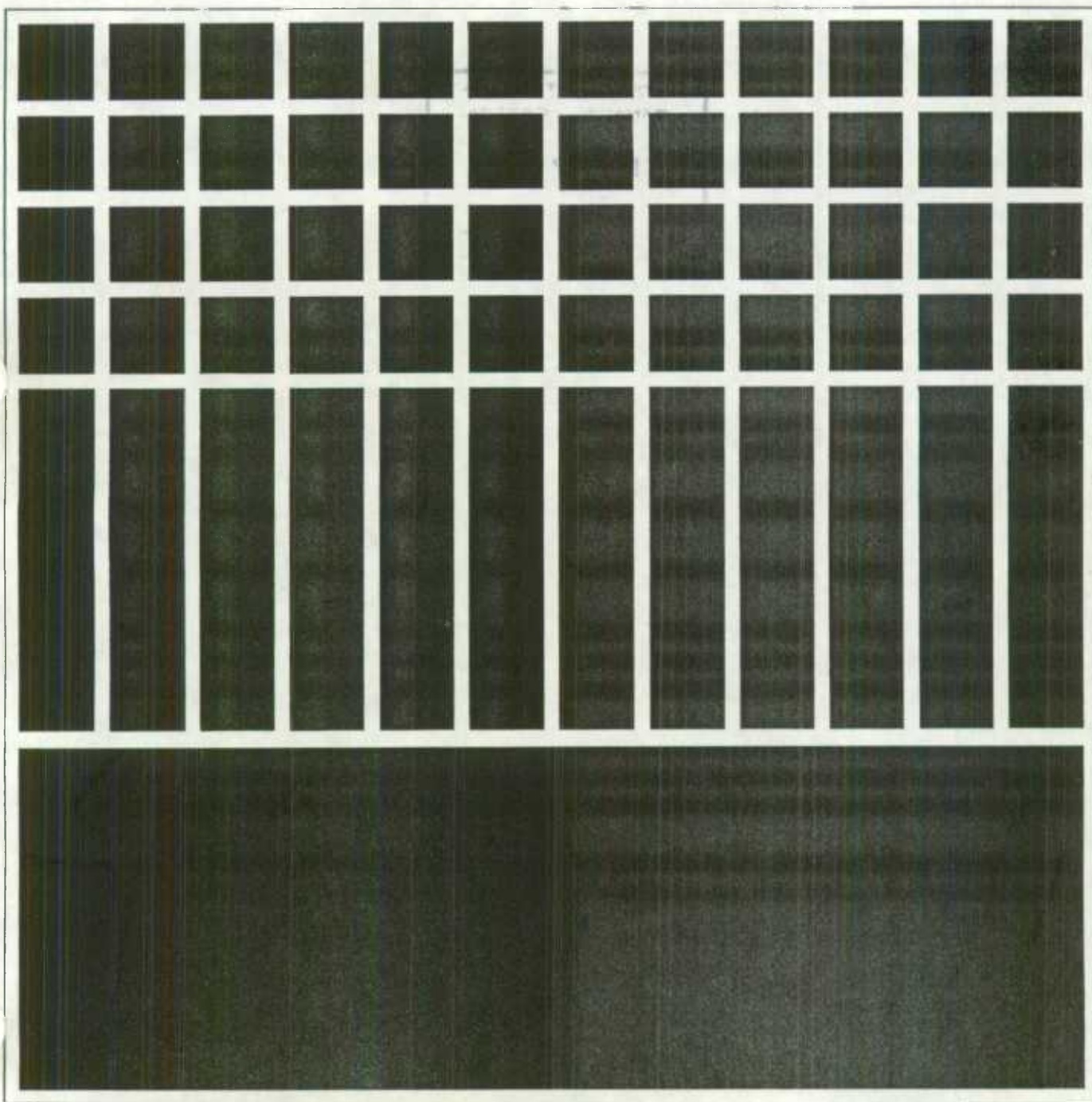


Public Institutions Division

DDN: 10893458

PDRGR

Compendium of Public Sector Statistics



Statistics
Canada

Statistique
Canada

Canada

STC

CA1

STC 360

91C56

Copy 2



Compendium of Public Sector Statistics

Table of Contents

1. Highlights

2. Introduction

3. Government Revenue and Expenditure Tables (FMS)

Federal Government Revenue

Federal Government Expenditure

Provincial and Territorial Government Revenue - Canada Total

Provincial and Territorial Government Expenditure - Canada Total

Local Government Revenue - Canada Total

Local Government Expenditure - Canada Total

Consolidated Federal, Provincial/Territorial and Local Government Revenue - Canada Total

Consolidated Federal, Provincial/Territorial and Local Government Expenditure - Canada
Total

Consolidated Provincial/Territorial and Local Government Revenue - Canada Total

Consolidated Provincial/Territorial and Local Government Expenditure - Canada Total

4. Government Assets, Liabilities and Debt Tables (FMS)

Federal Government Debt

Federal Government Balance Sheet

Provincial and Territorial Government Balance Sheet

Provincial and Territorial Government Balance Sheet, Canada Total

Local Government Balance Sheet, Canada Total

5. Government Employment and Remuneration Tables (FMS)

Federal Government Employment and Remuneration

Provincial and Territorial Government Employment and Remuneration

Local Government Employment and Remuneration

Total Government Employment and Remuneration

6. **Government Business Enterprises Financial Tables**

Federal Government Business Enterprises - Income and Expenses

Federal Government Business Enterprises - Income and Expenses by Industry

Federal Government Business Enterprises - Assets, Liabilities and Net Worth

Federal Government Business Enterprises - Assets, Liabilities and Net Worth, by Industry

Provincial and Territorial Government Business Enterprises - Income and Expenses, by
Province

Provincial and Territorial Government Business Enterprises - Income and Expenses, 1984
to 1988

Provincial and Territorial Government Business Enterprises - Assets, Liabilities and Net
Worth, by Province

Provincial and Territorial Government Business Enterprises - Assets, Liabilities and Net
Worth, 1984 to 1988

7. **Government Business Enterprises Employment and Remuneration Tables**

Federal Government Business Enterprises Employment and Remuneration

Provincial and Territorial Government Business Enterprises Employment and
Remuneration

8. **Social Security Tables**

Canada and Quebec Pension Plan - Beneficiaries

Canada and Quebec Pension Plan - Benefit Payments

Old Age Security - Beneficiaries

Old Age Security - Benefit Payments

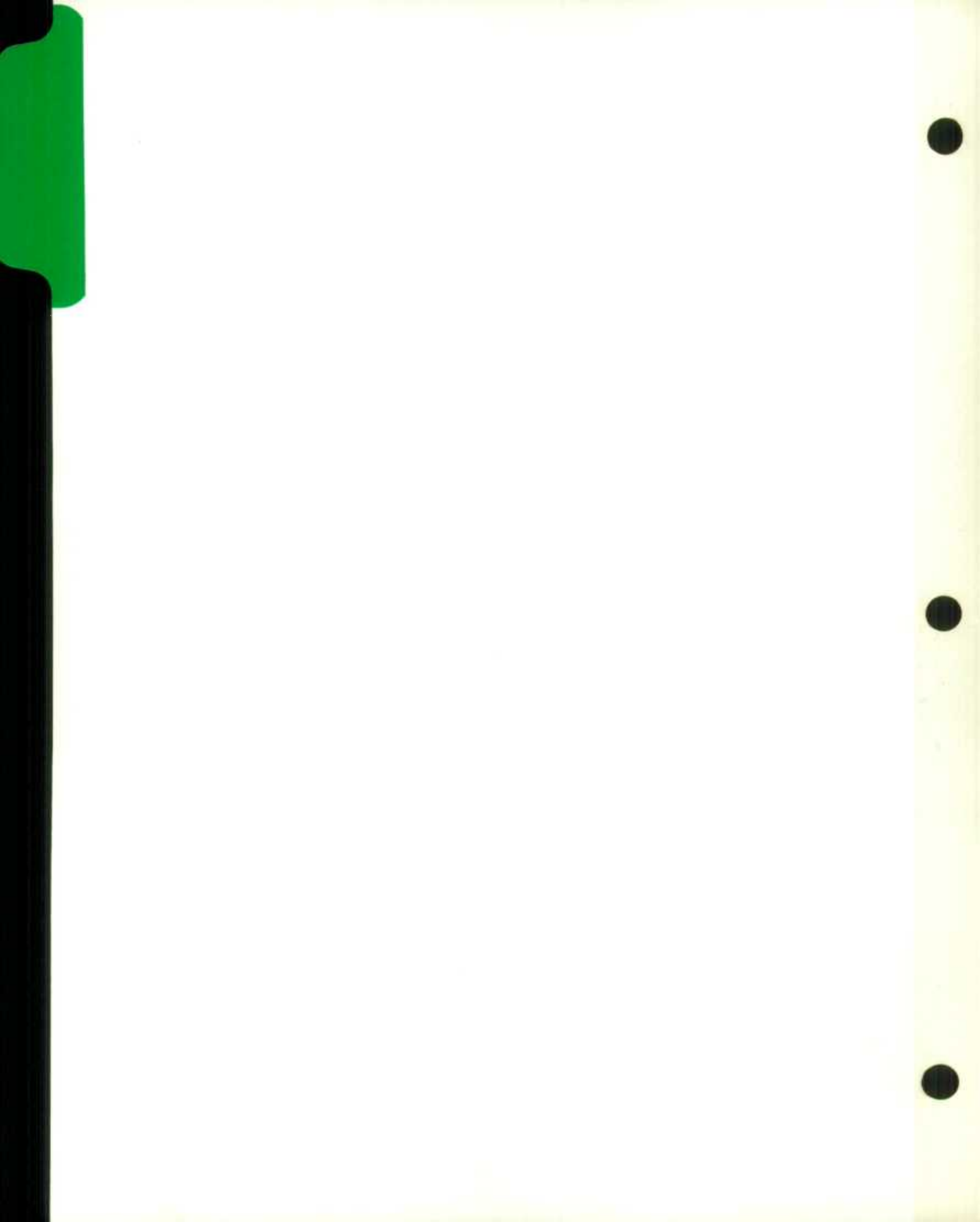
Family Allowances Recipients

Family Allowances Paid and Child Tax Credit Allowed

Canada Assistance Plan: Total Federal-Provincial Cost-Shared Expenditure

9. **Methodology, Sources and Data Quality**

10. **Public Institutions Division's Off-the-Shelf Product List**



Highlights

Annual Government Revenues and Expenditures

- In the five-year period, 1986/87 to 1990/91, federal government revenues increased from \$90 billion to \$127 billion (a 41% increase), with expenditures increasing from \$120 billion to \$155 billion or by 29%. Over that five-year period the federal deficit dropped from \$30.6 billion to \$28.4 billion.
- From 1986/87 to 1990/91 total revenue from all provincial and territorial governments in Canada grew by 41%, from \$101 billion to \$142 billion. During the same period total expenditures grew from \$113 billion to \$144 billion, an increase of 27%. The overall deficit dropped from \$12 billion to \$2 billion.
- Local government revenue grew from \$44 billion in 1986 to \$58 billion in 1990. Total local government expenditure grew from \$44 billion to \$60 billion in the same time frame.

Government Assets Liabilities and Debt

- Total accumulated net federal debt for 1989/90 was \$354 billion, up from \$326 billion in 1988/89 and \$73 billion in 1979/80.
- Net provincial debt (excess of liabilities over financial assets) was \$72 billion in 1989, up from \$35 billion in 1985.
- Net local government debt grew from \$19 billion in 1986 to \$22 billion in 1990.

Government Employment and Remuneration

- From 1985/86 to 1989/90 federal government employment dropped from 378 thousand people to 375 thousand (a decrease of 1%, while total federal government remuneration rose from \$11 billion to \$14 billion or by 27% in that period.
- Total employment in all provincial and territorial governments grew by 3%, from 486 thousand people to 501 thousand employees in the same time period with remuneration increasing from \$5 billion to almost \$6 billion, a 20% increase.
- From 1985 to 1989 total local government employment rose from 300 thousand to 330 thousand employees.

Government Business Enterprise Finances

- Total income for all federal government business enterprises declined from \$27 billion in 1985 to \$24 billion in 1989. Total expenses declined from \$27 billion to \$24 billion in the same period.
- In terms of income, in 1989, federal government business enterprises in the manufacturing mining and wholesale industrial group incurred a total income of \$9 billion or 39% of all federal GBE's, while GBE's in the transportation industry earned \$7 billion or 30% of the total and those in the communications industry had an income of \$5 billion or 21% of all federal GBE income. The remaining income can be ascribed to the finance, insurance, real estate and government services industries.
- Provincial Government Business Enterprises total income increased from \$34 billion in 1984 to \$41 billion in 1988 while total expenses increased from \$32 billion to \$36 billion in the same time period. In 1988 \$12 billion or 29% of total provincial GBE income was attributable to Quebec while \$10 billion or 24% were earned by Ontario GBE's. \$6 billion or 15% were income to British Columbia GBE's while the remaining \$16 billion or 39% represents the income of GBE's in the rest of the provinces and territories.

Social Security Programs

- The number of beneficiaries of the Canada and Quebec Pension Plans grew from 1.7 million people in 1981 to 3.2 million in 1990, an increase of approximately 88%. In the same period total benefits paid increased from \$3.3 billion to \$12.4 billion, an increase of 276%.
- From 1981 to 1990 the total number of beneficiaries of the Old Age Security program increased from 2.4 million people to 3.1 million, a growth of 29%. During that time period, total benefits paid under this program almost doubled, having grown from \$8.5 billion to \$16 billion.
- The number of families receiving Family Allowance payments in Canada increased from 3.6 million in 1981 to 3.7 million in 1990. During that time period, however, the proportion of all families in Canada receiving Family Allowance decreased from 57% to 52%. Total Family Allowance paid \$2 billion to \$2.7 billion, an increase of 35%.

Compendium of Public Sector Data
1991 Edition
Introduction

The Public Institutions Division of Statistics Canada (PID) has responsibility for collecting, processing, analyzing and disseminating statistics on the financial activities and employment of the Canadian public sector. More specifically the Division administers statistical programs which produce data as follows:

- annual government revenue and expenditure data by function and source respectively for the federal, provincial and local government levels; *as well as Consolidated Credit from Fed, Prov and Local and Consolidated Prov/Prov and Local*
- annual and quarterly data on government expenditures and revenues according to System of National Accounts classifications; *govt.*
- government assets, liabilities and debt statistics;
- incomes, expenditures, assets and liabilities of government business enterprises;
- data on sales values and volumes and government revenues from the sale of alcoholic beverages in Canada;
- government employment and remuneration statistics;
- statistics on Canada's social security programs.

This Compendium is designed to serve as an integral part of the Public Institutions Division's Data Dissemination Program which also includes annual publications, in-house off-the-shelf products as well as special tabulations and electronic products. *The Compendium is designed to provide the user with an overview of PID's statistical offerings.* More detail on each statistical area is available through PID's off the shelf products (Section 10 of this Compendium provides a list of those products), through special requests from the Division and in new subject-matter publications that will be coming out later this year.

This volume is a new form of dissemination for the Division and as such user comments on the nature and comprehensiveness of the product are encouraged. Please feel free to contact Tom Caplan, Chief of Data Dissemination and External Relations (613-951-0885) or Patricia Phillips, Data Dissemination and External Relations Co-ordinator (613-951-0767) for further information, to request data, or to offer comments.

Government Revenue and Expenditure Tables

- Federal Government Revenue
- Federal Government Expenditure
- Provincial and Territorial Government Revenue - Canada Total
- Provincial and Territorial Government Expenditure - Canada Total
- Local Government Revenue - Canada Total
- Local Government Expenditure - Canada Total
- Consolidated Federal, Provincial/Territorial and Local Government Revenue - Canada Total
- Consolidated Federal, Provincial/Territorial and Local Government Expenditure - Canada Total
- Consolidated Provincial/Territorial and Local Government Revenue - Canada Total
- Consolidated Provincial/Territorial and Local Government Expenditure - Canada Total

Federal Government Revenue
for the fiscal years 1986/87 to 1990/91
Financial Management System Basis

Page 1/1

Source	1986/87 A	1987/88 A	1988/89 A	1989/90 RE	1990/91 E
	(millions of dollars)				
Tax Revenues	82,340	94,357	99,767	109,397	116,585
Personal Income Tax	39,580	47,359	48,078	54,487	60,259
Corporation Income Tax	9,885	10,878	11,730	12,700	12,400
Taxes on Payments to Non-Residents	1,356	1,162	1,578	1,400	1,485
General Sales Tax	12,022	12,984	15,744	16,985	16,240
Motive Fuel Tax	1,491	2,671	2,542	3,110	3,555
Alcoholic Beverages and Tobacco Taxes	2,676	2,832	2,706	3,660	3,755
Air Transportation Tax	348	435	499	500	530
Custom Duties	4,191	4,390	4,527	4,515	4,330
Other Consumption Taxes	251	615	317	364	361
Unemployment Insurance Contributions	9,633	10,554	11,252	10,735	12,620
Petroleum and Natural Gas Taxes	467	(14)	111	0	0
Miscellaneous Taxes	440	491	683	941	1,050
Non-tax Revenues	7,805	8,732	9,738	9,499	10,482
Natural Resource Revenue	56	52	56	45	50
Privileges, Licences and Permits	169	199	216	146	178
Sales of Goods and Services	2,837	3,288	2,854	2,126	2,829
Return on Investments	3,871	4,190	5,577	5,997	6,336
Other Revenue from Own Sources	848	965	990	1,124	994
Transfers from Provincial Governments	24	38	45	61	95
TOTAL GROSS REVENUE	90,145	103,089	109,505	118,896	127,067
Note:	Contact: Graham Marr Public Institutions Division Statistics Canada K1A 0T6 Tel: (613) 951-1781 Fax: (613) 951-0661				
Fiscal years ending March 31					
A = Actual; E = Estimates; RE = Revised Estimates					
Disponible en français					

Federal Government Expenditure

for the fiscal years 1986/87 to 1990/91
Financial Management System Basis

Page 1/1

Function	1986/87 A	1987/88 A	1988/89 A	1989/90 RE	1990/91 E
	(millions of dollars)				
General Services	5,303	5,751	6,012	7,014	6,921
Protection of Persons and Property	11,986	12,962	13,440	14,011	14,790
Transportation and Communications	3,536	3,689	3,727	3,477	3,598
Health	7,465	7,462	7,685	7,751	7,443
Social Services	36,193	37,887	39,280	43,258	47,668
Education	4,187	4,222	4,251	4,227	4,152
Resource Conservation and Industrial Development	7,072	8,708	7,542	7,010	5,614
Environment	446	498	530	590	638
Recreation and Culture	931	1,028	1,044	1,110	1,091
Labour Employment and Immigration	1,364	1,393	1,790	1,864	2,179
Housing	1,456	1,553	1,598	1,746	1,884
Foreign Affairs and International Assistance	2,896	3,271	3,632	3,446	3,433
Regional Planning and Development	344	347	341	419	500
Research Establishments	1,090	1,131	1,059	1,237	1,246
General Purpose Transfers to Other Governments	7,234	8,080	9,104	10,030	10,044
Transfers to Own Enterprises	2,702	3,718	2,125	2,881	2,096
Debt Charges	26,617	29,016	33,167	39,249	41,013
Other Expenditures	4	4	7	0	1,192
TOTAL GROSS EXPENDITURE	120,826	130,720	136,334	149,320	155,502
SURPLUS (DEFICIT)	(30,681)	(27,631)	(26,829)	(30,424)	(28,435)
<div> <div> Note: Fiscal years ending March 31 A = Actual; E = Estimates; RE = Revised Estimates Disponible en français </div> <div> Contact: Graham Marr Public Institutions Division Statistics Canada K1A 0T6 </div> <div> Tel: (613) 951-1781 Fax: (613) 951-0661 </div> </div>					

Provincial and Territorial Government Revenue – Canada Total

for the fiscal years 1986/87 to 1990/91

Financial Management System Basis

Page 1/1

Source	1986/87 A	1987/88 A	1988/89 E	1989/90 RE	1990/91 E
	(millions of dollars)				
Tax Revenues	59,100	67,438	75,349	82,497	90,665
Personal Income Tax	24,580	28,519	31,156	34,639	37,673
Corporation Income Tax	4,225	5,195	6,020	6,654	6,906
Real Property Taxes	1,026	1,041	1,158	1,260	2,058
General Sales Tax	12,976	14,355	16,521	17,953	19,084
Motive Fuel Tax	3,285	3,830	4,189	4,165	4,610
Alcoholic Beverages and Tobacco Taxes	1,998	2,099	2,316	2,446	2,740
Other Consumption Taxes	713	792	847	1,246	1,327
Health and Social Insurance Levies	7,649	8,556	9,478	9,750	9,383
Miscellaneous Taxes	2,649	3,051	3,665	4,384	6,884
Non-tax Revenues	41,645	45,156	47,743	50,343	50,825
Natural Resource Revenue	4,382	5,676	5,274	5,543	5,991
Privileges, Licences and Permits	2,501	2,716	2,967	3,234	3,743
Sales of Goods and Services	2,264	2,332	2,467	2,169	2,296
Return on Investment	10,805	11,154	12,209	13,034	13,247
Other Revenue from Own Sources	781	615	688	844	904
General Purpose Transfers from other Levels of Government	6,653	7,860	8,648	9,525	9,785
Specific Purpose Transfers from other Levels of Government	14,259	14,803	15,492	15,994	15,859
TOTAL GROSS REVENUE	100,745	112,592	123,092	132,837	142,490
Note:	Contact: Pierre Doucet Public Institutions Division Statistics Canada K1A 0T6				
Fiscal years ending March 31	Tel: (613) 951-1820				
A = Actual; E = Estimates; RE = Revised Estimates	Fax: (613) 951-0661				
Disponible en français					

Provincial and Territorial Government Expenditure – Canada Total

Page 1/1

for the fiscal years 1986/87 to 1990/91

Financial Management System Basis

Function	1986/87 A	1987/88 A	1988/89 E	1989/90 RE	1990/91 E
	(millions of dollars)				
General Services	5,639	7,041	6,716	6,974	7,857
Protection of Persons and Property	3,523	3,949	4,063	4,214	4,557
Transportation and Communications	5,762	5,758	5,913	6,759	7,106
Health	29,010	30,876	33,603	37,139	39,385
Social Services	17,019	18,719	19,551	21,052	22,765
Education	22,376	23,132	24,971	25,943	28,058
Resource Conservation and Industrial Development	7,590	6,511	7,581	6,844	6,868
Environment	1,217	1,300	1,702	1,644	1,848
Recreation and Culture	1,453	1,415	1,451	1,645	1,758
Labour Employment and Immigration	483	416	543	524	558
Housing	745	687	867	869	1,023
Regional Planning and Development	696	697	838	1,005	967
Research Establishments	253	256	272	342	396
General Purpose Transfers to Local Government	1,954	2,023	2,528	1,636	2,227
Transfers to Own Entreprises	1,430	1,431	1,472	1,476	1,203
Debt Charges	13,690	15,144	15,921	16,766	17,555
Other Expenditures	19	1	23	22	20
TOTAL GROSS EXPENDITURE	112,857	119,355	128,014	134,851	144,151
SURPLUS (DEFICIT)	(12,112)	(6,763)	(4,922)	(2,014)	(1,661)
Note: Fiscal years ending March 31 A = Actual; E = Estimates; RE = Revised Estimates Disponible en français	Contact: Pierre Doucet Public Institutions Division Statistics Canada K1A 0T6 Tel: (613) 951-1820 Fax: (613) 951-0661				

Local Government Revenue – Canada Total

for the fiscal years 1986 to 1990

Financial Management System Basis

Page 1/1

Source	1986 A	1987 A	1988 RE	1989 RE	1990 E
	(millions of dollars)				
Tax Revenues	15,877	17,210	18,788	20,070	21,179
Real Property Tax	12,768	13,880	15,209	16,326	17,084
Business Tax	1,658	1,755	1,940	2,064	2,255
Special assessments	825	870	918	961	1,064
Grants in lieu of taxes from non-government organizations	132	135	153	141	157
Other property and related taxes	339	370	379	403	433
General Sales Tax	27	38	31	31	33
Amusements taxes	28	31	32	30	32
Other miscellaneous taxes	100	132	127	113	121
Non-tax Revenues	27,816	29,821	31,914	33,315	36,439
Privileges, licences and permits	282	341	366	373	397
Sales of goods and services	4,894	5,511	6,079	6,282	6,806
Return on investment	1,285	1,338	1,430	1,422	1,499
Other Revenue from Own Sources	772	881	916	920	975
General Purpose Transfers from other Levels of Government	2,453	2,585	2,752	2,860	3,066
Specific Purpose Transfers from Other Levels of Government	18,130	19,165	20,371	21,459	23,696
TOTAL GROSS REVENUE	43,693	47,032	50,702	53,385	57,618
Notes:	Contact:				
Fiscal year-end closest to December 31	Robert Loggie		Tel: (613) 951-1809		
A = Actual; E = Estimates; RE = Revised Estimates	Public Institutions Division		Fax: (613) 951-0661		
Totals may not add due to rounding	Statistics Canada				
Disponible en français	K1A 0T6				

Local Government Expenditure – Canada Total

Page 1/1

for the fiscal years 1986 to 1990

Financial Management System Basis

Function	1986 A	1987 A	1988 RE	1989 RE	1990 E
	(millions of dollars)				
General Services	2,271	2,498	2,712	2,987	3,272
Protection of Persons and Property	3,622	3,816	4,165	4,520	4,868
Transportation and Communications	4,523	4,905	5,119	5,748	6,132
Health	2,644	2,816	3,015	3,200	3,532
Social Services	1,680	1,905	2,120	2,353	2,681
Education	17,880	19,155	20,601	21,897	23,559
Resource Conservation and Industrial Development	532	570	622	591	617
Environment	3,363	3,689	3,952	4,948	5,372
Recreation and Culture	2,708	3,019	3,145	3,466	3,913
Housing	239	219	245	275	301
Regional Planning and Development	391	464	414	465	483
Transfers to Own Enterprises	897	933	922	959	1,032
Debt Charges	3,340	3,323	3,403	3,520	3,638
Other Expenditures	327	391	341	388	194
TOTAL GROSS EXPENDITURE	44,418	47,704	50,776	55,317	59,594
SURPLUS (DEFICIT)	(725)	(672)	(74)	(1,932)	(1,975)
<div> <div> Note: Fiscal year-end closest to December 31 A = Actual; E = Estimates; RE = Revised Estimates Totals may not add due to rounding Disponible en français </div> <div> Contact: Robert Loggie Public Institutions Division Statistics Canada K1A 0T6 </div> <div> Tel: (613) 951-1809 Fax: (613) 951-0661 </div> </div>					

Consolidated Federal, Provincial/Territorial and Local Government Revenue – Canada Total

Page 1/1

for the fiscal years 1986/87 to 1990/91

Financial Management System Basis

Source	1986/87 A	1987/88 A	1988/89 RE	1989/90 RE	1990/91 E
	(millions of dollars)				
Tax Revenues	157,053	178,714	193,574	211,610	228,061
Personal Income Tax	63,895	75,589	78,905	88,773	97,563
Corporation Income Tax	14,109	16,074	17,750	19,354	19,306
Taxes on Payments to Non-Residents	1,356	1,162	1,578	1,400	1,485
Property and Related Taxes	16,748	18,050	19,757	21,156	23,051
General Sales Tax	25,025	27,377	32,265	34,938	35,324
Motive Fuel Tax	4,776	6,501	6,730	7,275	8,165
Alcoholic Beverages and Tobacco Taxes	4,674	4,931	5,022	6,106	6,495
Custom Duties	4,191	4,390	4,527	4,515	4,330
Other Consumption Taxes	1,339	1,872	1,694	2,140	2,250
Health and Social Insurance Levies	17,282	19,110	20,730	20,485	22,003
Miscellaneous Taxes	3,657	3,660	4,616	5,469	8,088
Non-tax Revenues	34,049	37,485	40,158	41,468	44,505
Natural Resource Revenue	4,437	5,728	5,330	5,588	6,041
Privileges, Licences and Permits	2,951	3,255	3,549	3,753	4,318
Sales of Goods and Services	8,726	9,863	9,807	9,100	10,372
Return on Investment	14,899	15,619	18,078	19,314	20,020
Other Revenue from Own Sources	3,036	3,021	3,395	3,714	3,755
TOTAL GROSS REVENUE	191,102	216,199	233,733	253,078	272,566
Note:	Contact:				
Fiscal years ended nearest to December 31	Pierre Doucet				
A = Actual; E = Estimates; RE = Revised Estimates	Public Institutions Division				
Totals may not add due to rounding	Statistics Canada				
Disponible en français	K1A 0T6				
	Tel: (613) 951-1820				
	Fax: (613) 951-0661				

Consolidated Federal, Provincial/Territorial and Local Government Expenditure – Canada Total

Page 1/1

for the fiscal years 1986/87 to 1990/91

Financial Management System Basis

Function	1986/87 A	1987/88 A	1988/89 RE	1989/90 RE	1990/91 E
	(millions of dollars)				
General Services	13,153	15,235	15,353	16,891	17,969
Protection of Persons and Property	18,410	19,940	21,015	22,120	23,451
Transportation and Communications	12,513	12,950	13,220	14,376	15,185
Health	29,836	32,005	34,811	38,174	39,750
Social Services	49,431	52,424	55,345	60,812	66,688
Education	28,974	30,529	33,193	34,800	37,441
Resource Conservation and Industrial Development	14,591	15,150	13,990	12,599	11,606
Environment	4,287	4,588	5,509	6,483	7,023
Recreation and Culture	4,899	5,295	5,429	6,001	6,538
Foreign Affairs and International Assistance	2,886	3,260	3,632	3,446	3,433
Regional Planning and Development	1,259	1,290	1,277	1,558	1,651
Debt Charges	42,586	46,421	51,351	58,395	61,144
Other Expenditures	10,885	12,044	10,984	12,290	13,089
TOTAL GROSS EXPENDITURE	233,709	251,130	265,108	287,944	304,966
SURPLUS (DEFICIT)	(42,607)	(34,931)	(31,375)	(34,866)	(32,400)
Note:	Contact:				
Fiscal years ended nearest to December 31	Pierre Doucet				
A = Actual; E = Estimates; RE = Revised Estimates	Public Institutions Division				
Totals may not add due to rounding	Statistics Canada				
Disponible en français	K1A 0T6				
	Tel: (613) 951-1820				
	Fax: (613) 951-0661				

Consolidated Provincial/Territorial and Local Government Revenue – Canada Total

Page 1/1

for the fiscal years 1986/87 to 1990/91

Financial Management System Basis

Source	1986/87 A	1987/88 A	1988/89 RE	1989/90 RE	1990/91 E
	(millions of dollars)				
Tax Revenues	74,712	84,358	93,808	102,213	111,476
Personal Income Tax	24,316	28,231	30,827	34,286	37,304
Corporation Income Tax	4,224	5,195	6,020	6,654	6,906
Property and Related Taxes	16,748	18,050	19,757	21,156	23,051
General Sales Tax	13,003	14,393	16,521	17,953	19,084
Motive Fuel Tax	3,285	3,830	4,189	4,165	4,610
Alcoholic Beverages and Tobacco Taxes	1,998	2,099	2,316	2,446	2,740
Other Consumption Taxes	741	823	878	1,276	1,359
Health and Social Insurance Levies	7,649	8,556	9,478	9,750	9,383
Miscellaneous Taxes	2,749	3,183	3,822	4,528	7,038
Non-tax Revenues	48,803	53,194	56,701	59,508	61,707
Natural Resource Revenue	4,382	5,676	5,274	5,543	5,991
Privileges, Licences and Permits	2,782	3,057	3,333	3,607	4,140
Sales of Goods and Services	6,986	7,632	8,421	8,323	8,915
Return on Investment	11,027	11,429	12,578	13,394	13,684
Other Revenue from Own Sources	1,553	1,496	1,604	1,764	1,878
Transfers from Federal Government	21,437	23,346	24,692	26,052	26,216
Transfers from Government Enterprises	635	559	802	827	882
TOTAL GROSS REVENUE	123,515	137,552	150,509	161,721	173,183
Note:	Contact:				
Fiscal years ended nearest to December 31	Pierre Doucet				
A = Actual; E = Estimates; RE = Revised Estimates	Public Institutions Division				
Totals may not add due to rounding	Statistics Canada				
Disponible en français	K1A 0T6				
	Tel: (613) 951-1820				
	Fax: (613) 951-0661				

Consolidated Provincial/Territorial and Local Government Expenditure – Canada Total

Page 1/1

for the fiscal years 1986/87 to 1990/91

Financial Management System Basis

Function	1986/87 A	1987/88 A	1988/89 RE	1989/90 RE	1990/91 E
	(millions of dollars)				
General Services	7,858	9,493	9,357	9,890	11,059
Protection of Persons and Property	7,066	7,656	8,163	8,666	9,337
Transportation and Communications	9,093	9,388	9,575	10,979	11,645
Health	29,018	31,158	34,189	37,802	40,094
Social Services	17,485	19,188	20,413	22,072	23,916
Education	28,000	29,696	32,198	33,672	35,828
Resource Conservation and Industrial Development	7,956	6,932	7,969	7,195	7,263
Environment	3,846	4,095	4,960	5,857	6,294
Recreation and Culture	3,971	4,270	4,391	4,895	5,452
Regional Planning and Development	917	945	939	1,129	1,144
Debt Charges	15,968	17,404	18,261	19,223	20,131
Other Expenditures	4,285	4,262	4,458	4,617	4,537
TOTAL GROSS EXPENDITURE	135,464	144,489	154,873	165,998	176,700
SURPLUS (DEFICIT)	(11,949)	(6937)	(4,365)	(4,277)	(3,517)
Note:	Contact:				
Fiscal years ended nearest to December 31	Pierre Doucet				
A = Actual; E = Estimates; RE = Revised Estimates	Public Institutions Division				
Totals may not add due to rounding	Statistics Canada				
Disponible en français	K1A 0T6				
	Tel: (613) 951-1820				
	Fax: (613) 951-0661				

Government Assets, Liabilities and Debt Tables

- Federal Government Debt
- Federal Government Balance Sheet
- Provincial and Territorial Government Balance Sheet
- Provincial and Territorial Government Balance Sheet - Canada Total
- Local Government Balance Sheet, Canada Total

Federal Government Debt

Page 1/1

Selected fiscal years 1866/67 to 1989/90 [1]

Year	Net Federal Debt	Gross Federal Debt	Components of the Gross Debt					
			Marketable Bonds	Treasury Bills	Savings Bonds	Other Securities	Pension Plans	Other Liabilities
(millions of dollars)			(millions of dollars)					
1866/67	76	93	69					24
1884/85	196	265	174			19		72
1899/00	265	347	237					110
1913/14	336	544	304			8	2	230
1917/18	1,192	1,863	1,428	75			5	355
1932/33	2,596	3,062	2,606	50		60	50	296
1938/39	3,153	3,686	3,231	155			68	232
1944/45	11,298	14,913	11,654	380		1,506	94	1,279
1949/50	11,645	16,723	12,882	450	891	850	175	1,475
1959/60	12,089	20,310	10,628	2,125	3,137		1,910	2,510
1964/65	15,529	26,524	11,286	2,140	5,552		4,191	3,355
1969/70	17,888	35,250	13,148	2,895	6,579	15	6,605	6,008
1974/75	24,558	55,889	14,490	5,630	12,915	51	12,978	9,825
1979/80	73,431	113,170	35,890	16,325	18,081	1,825	24,822	16,227
1980/81	85,872	130,307	43,724	21,770	15,812	1,343	27,729	19,929
1981/82	98,350	146,763	46,724	19,375	24,978	1,276	31,443	22,967
1982/83	125,969	175,060	51,714	29,125	32,641	1,996	35,526	24,058
1983/84	162,400	212,241	58,994	41,700	38,204	3,228	39,388	30,727
1984/85	202,574	249,452	71,373	52,300	41,959	7,165	43,690	32,965
1985/86	238,687	285,139	86,957	61,950	44,245	8,366	48,370	35,251
1986/87	269,713	319,618	100,294	76,950	44,310	7,938	53,369	36,761
1987/88	297,400	351,229	110,222	81,050	53,323	7,463	58,788	40,383
1988/89	325,989	382,219	121,121	102,700	47,756	6,048	64,613	39,981
1989/90	354,439	408,483	131,810	118,550	40,929	4,696	70,997	41,501
Note: [1] As at March 31 Disponible en français				Contact: A.J. Gareau Public Institutions Division Statistics Canada K1A 0T6 Tel: (613) 951-1836 Fax: (613) 951-0661				

Federal Government Balance Sheet
March 31, 1986 to 1990

Page 1/1

	1986	1987	1988	1989	1990
	(millions of dollars)				
FINANCIAL ASSETS					
Cash on hand and on deposit	6,599	6,196	3,973	3,928	3,592
Receivables	2,000	2,103	2,137	2,148	2,415
Advances	24,622	28,744	36,422	37,507	34,037
Securities	10,827	10,910	8,893	9,113	9,612
Other Financial Assets	2,404	1,952	2,404	3,535	4,389
TOTAL FINANCIAL ASSETS	46,452	49,905	53,829	56,231	54,045
LIABILITIES					
Bank overdrafts	2,934	2,895	2,735	2,381	2,563
Payables	18,292	19,263	21,413	22,817	24,129
Advances	1,568	1,861	1,899	1,932	1,905
Treasury Bills	61,950	76,950	81,050	102,700	118,550
Savings Bonds	44,245	44,310	53,323	47,756	40,929
Bonds and Debentures	87,402	102,090	112,713	124,127	134,883
Other Securities	11,833	10,415	9,452	7,026	5,482
Deposits	3,642	3,702	3,982	3,709	5,219
Other Liabilities	53,273	58,132	64,663	69,772	74,824
TOTAL LIABILITIES	285,139	319,618	351,230	382,220	408,484
EXCESS OF FINANCIAL ASSETS OVER LIABILITIES OR (EXCESS OF LIABILITIES OVER FINANCIAL ASSETS)	(238,687)	(269,713)	(297,401)	(325,989)	(354,439)
Note: Disponible en français	Contact: A.J. Gareau Public Institutions Division Statistics Canada K1A 0T6 Tel: (613) 951-1826 Fax: (613) 951-0661				

Provincial and Territorial Government Balance Sheet

March 31, 1989

Page 1/2

	NF	PE	NS	NB	PQ	ON
	(millions of dollars)					
FINANCIAL ASSETS						
Cash on Hand and on Deposit	82	40	109	133	7,885	654
Receivables	100	64	313	511	3,173	367
Advances	231	88	341	145	887	336
Securities	1,709	354	2,372	1,737	7,816	16,906
Other Financial Assets	71	21	45	81	63	60
TOTAL FINANCIAL ASSETS	2,193	567	3,180	2,607	19,824	18,323
LIABILITIES						
Bank Overdrafts	64	15	59	29	547	2,608
Payables	167	85	432	391	4,357	170
Advances	276	15	199	42	2,544	342
Treasury Bills	130	0	0	173	1,705	650
Savings Bonds	23	0	0	0	2,360	0
Bonds and Debentures	4,303	618	5,885	4,358	23,697	36,328
Other Securities	43	0	56	89	2,694	23
Deposits	1	43	8	10	90	1,510
Other Liabilities	3	6	43	349	14,043	7,982
TOTAL LIABILITIES	5,010	782	6,682	5,441	52,037	49,613
EXCESS OF FINANCIAL ASSETS OVER LIABILITIES OR (EXCESS OF LIABILITIES OVER FINANCIAL ASSETS)	(2,817)	(215)	(3,502)	(2,834)	(32,213)	(31,290)
Note: Disponible en français	Contact: A.J. Gareau Public Institutions Division Statistics Canada K1A 0T6 Tel: (613) 951-1826 Fax: (613) 951-0661					

Provincial and Territorial Government Balance Sheet

March 31, 1989

Page 2/2

	MB	SK	AB	BC	YT	NT	CANADA
	(millions of dollars)						
FINANCIAL ASSETS							
Cash on Hand and on Deposit	566	33	2,786	44	38	72	12,442
Receivables	277	393	1,252	1,291	39	119	7,899
Advances	3,769	5,687	681	3,650	7	67	15,889
Securities	3,222	2,457	22,061	13,757	78	111	72,580
Other Financial Assets	44	106	117	343	43	0	994
TOTAL FINANCIAL ASSETS	7,878	8,676	26,897	19,085	205	369	109,804
LIABILITIES							
Bank Overdrafts	99	11	40	170	0	39	3,681
Payables	756	163	1,340	1,343	36	163	9,403
Advances	142	7	4	47	6	0	3,624
Treasury Bills	650	650	650	780	0	0	5,388
Savings Bonds	0	0	731	153	0	0	3,267
Bonds and Debentures	9,544	8,329	9,798	6,035	5	0	108,900
Other Securities	418	1,832	4,481	5,804	0	0	15,440
Deposits	696	152	313	4,425	0	0	7,248
Other Liabilities	90	175	800	1,345	20	1	24,857
TOTAL LIABILITIES	12,395	11,319	18,157	20,102	67	203	181,808
EXCESS OF FINANCIAL ASSETS OVER LIABILITIES OR (EXCESS OF LIABILITIES OVER FINANCIAL ASSETS)	(4,517)	(2,643)	8,740	(1,017)	138	166	(72,004)
Note: Disponible en français	Contact: A.J. Gareau Public Institutions Division Statistics Canada K1A 0T6 Tel: (613) 951-1826 Fax: (613) 951-0661						

Provincial and Territorial Government Balance Sheet, Canada Total
March 31, 1985 to 1989

Page 1/1

	1985	1986	1987	1988	1989
	(millions of dollars)				
FINANCIAL ASSETS					
Cash on hand and on deposit	9,540	7,950	9,840	11,264	12,442
Receivables	6,757	7,182	7,152	6,942	7,899
Advances	10,976	11,320	12,703	13,893	15,889
Securities	56,176	60,827	62,821	66,214	72,580
Other Financial Assets	1,084	816	1,188	1,136	994
TOTAL FINANCIAL ASSETS	84,533	88,095	93,704	99,449	109,804
LIABILITIES					
Bank overdrafts	536	2,424	2,926	2,887	3,681
Payables	6,652	8,179	8,711	8,722	9,403
Advances	3,105	3,432	3,462	3,423	3,624
Treasury Bills	4,247	4,339	4,638	5,240	5,388
Savings Bonds	2,671	2,733	2,808	3,492	3,267
Bonds and Debentures	80,931	89,405	98,559	103,981	108,900
Other Securities	6,340	8,431	13,078	13,321	15,440
Deposits	1,622	1,687	2,139	5,773	7,248
Other Liabilities	13,818	16,379	18,968	22,156	24,857
TOTAL LIABILITIES	119,922	137,009	155,289	168,995	181,808
EXCESS OF FINANCIAL ASSETS OVER LIABILITIES OR (EXCESS OF LIABILITIES OVER FINANCIAL ASSETS)	(35,389)	(48,914)	(61,585)	(69,546)	(72,004)
Note: Disponible en français	Contact: A.J. Gareau Public Institutions Division Statistics Canada K1A 0T6 Tel: (613) 951-1826 Fax: (613) 951-0661				

Local Government Balance Sheet, Canada Total

Page 1/1

December 31, 1986 to 1990

	1986	1987	1988	1989 E	1990 E
	(millions of dollars)				
FINANCIAL ASSETS					
Cash on hand and on deposit	3,868	4,109	4,152	4,304	4,308
Receivables	4,513	4,732	4,752	4,978	5,020
Advances	1,905	1,997	2,052	2,316	2,239
Securities	4,587	4,956	5,404	5,619	5,914
Other Financial Assets	1,637	1,600	1,605	1,706	1,760
TOTAL FINANCIAL ASSETS	16,510	17,394	17,965	18,923	19,241
LIABILITIES					
Payables	3,851	4,013	4,145	4,543	4,754
Bank Loans	1,032	1,056	1,012	1,136	1,456
Advances	2,449	2,729	2,900	2,949	3,096
Bonds and Debentures	27,471	28,553	28,907	30,041	30,449
Other Liabilities	993	1,264	1,408	1,411	1,521
TOTAL LIABILITIES	35,796	37,615	38,372	40,080	41,276
EXCESS OF FINANCIAL ASSETS OVER LIABILITIES OR (EXCESS OF LIABILITIES OVER FINANCIAL ASSETS)	(19,286)	(20,221)	(20,407)	(21,157)	(22,035)
Total financial assets per capita (\$)	651	679	693	721	723
Total liabilities per capita (\$)	1,412	1,468	1,481	1,527	1,552
Population (thousands)	25,352	25,617	25,909	26,240	26,602
Note:	Contact: A.J. Gareau Public Institutions Division Statistics Canada K1A 0T6 Tel: (613) 951-1826 Fax: (613) 951-0661				
E = Estimates					
Local Governments include municipalities (towns, villages, etc.), elementary and secondary schools (except in Newfoundland, New Brunswick and Yukon), municipal hospitals and other special authorities which carry out municipal functions.					
Disponible en français					

Government Employment and Remuneration Tables

- Federal Government Employment and Remuneration
- Provincial and Territorial Government Employment and Remuneration
- Local Government Employment and Remuneration
- Total Government Employment and Remuneration

Federal Government Employment and Remuneration

for the fiscal years 1985/86 to 1989/90

Employment - Averages for fiscal years ended March 31

Province or Territory	1985/86	1986/87	1987/88	1988/89	1989/90
(number of employees)					
Newfoundland	8,081	8,059	7,924	8,101	8,298
Prince Edward Island	3,509	3,459	3,392	3,410	3,346
Nova Scotia	33,387	32,886	31,789	31,789	31,212
New Brunswick	13,204	13,393	13,365	13,240	13,178
Quebec	67,175	68,299	67,535	67,185	67,836
Ontario	143,472	141,827	139,335	140,507	143,208
Manitoba	18,115	18,207	17,484	17,294	17,053
Saskatchewan	10,521	10,488	9,985	9,823	9,786
Alberta	25,799	25,814	25,373	25,246	25,438
British Columbia	36,873	37,418	36,484	36,387	36,464
Yukon	1,238	1,196	1,211	1,182	1,165
Northwest Territories	2,518	2,251	1,987	1,571	1,507
Outside Canada	14,004	14,892	15,039	15,740	16,385
Total [1]	377,897	378,189	370,903	371,476	374,874

Remuneration - Totals for fiscal years ended March 31

Province or Territory	1985/86	1986/87	1987/88	1988/89	1989/90
(millions of dollars)					
Newfoundland	237	240	248	282	307
Prince Edward Island	102	105	107	116	121
Nova Scotia	960	975	990	1,075	1,123
New Brunswick	378	393	409	440	469
Quebec	2,006	2,099	2,167	2,351	2,487
Ontario	4,465	4,563	4,676	5,103	5,376
Manitoba	522	539	543	585	609
Saskatchewan	315	327	329	351	367
Alberta	733	760	786	838	885
British Columbia	1,090	1,136	1,165	1,256	1,319
Yukon	40	39	41	46	50
Northwest Territories	80	71	66	67	76
Outside Canada	422	505	543	589	594
Total [2]	11,351	11,751	12,068	13,098	13,783

Note:

[1] Figures may not add due to averaging.

[2] Figures may not add due to rounding.

Disponible en français

Contact:

Christine Dominguez
Public Institutions Division
Statistics Canada
K1A 0T6

Telephone: (613) 951-8510

Facsimile: (613) 951-0661

Provincial and Territorial Government Employment and Remuneration for the fiscal years 1985/86 to 1989/90

Employment - Averages for fiscal years ended March 31

Province or Territory	1985/86	1986/87	1987/88	1988/89	1989/90
(number of employees)					
Newfoundland	23,766	24,496	25,106	23,228	22,599
Prince Edward Island	4,573	4,694	4,874	4,924	5,045
Nova Scotia	21,767	21,627	22,154	23,175	23,468
New Brunswick	34,405	35,397	36,966	36,745	37,943
Quebec	107,234	104,126	105,006	105,537	108,717
Ontario	124,074	127,961	131,132	133,639	131,082
Manitoba	19,014	19,198	19,664	19,828	20,029
Saskatchewan	23,083	23,468	23,132	23,106	24,420
Alberta	71,092	72,442	69,242	69,094	72,070
British Columbia	50,523	55,187	52,163	50,625	46,711
Yukon	2,238	2,320	2,415	2,497	2,717
Northwest Territories	4,171	4,552	5,527	5,886	6,208
Total [1]	485,941	495,466	497,380	498,282	501,007

Remuneration - Totals for fiscal years ended March 31

Province or Territory	1985/86	1986/87	1987/88	1988/89	1989/90
(millions of dollars)					
Newfoundland	467	509	560	551	579
Prince Edward Island	93	100	110	111	120
Nova Scotia	497	503	543	543	619
New Brunswick	798	820	893	930	1,005
Quebec	2,958	2,928	3,260	3,191	3,471
Ontario	3,134	3,426	3,771	3,932	4,191
Manitoba	474	497	524	554	582
Saskatchewan	600	651	599	591	645
Alberta	1,767	1,841	1,758	1,868	1,972
British Columbia	1,294	1,367	1,342	1,362	1,411
Yukon	69	78	85	89	103
Northwest Territories	168	191	201	217	233
Total [2]	12,317	12,910	13,649	13,937	14,928

Note:

[1] Figures may not add due to averaging.

[2] Figures may not add due to rounding.

Disponible en français

Contact:

Peter Dudley
Public Institutions Division
Statistics Canada
K1A 0T6

Telephone: (613) 951-1851

Facsimile: (613) 951-0661

Local Government Employment and Remuneration for the fiscal years 1985/86 to 1989/90

Employment - Averages for the fiscal years ended March 31

Province or Territory	1985/86	1986/87	1987/88	1988/89	1989/90
(number of employees)					
Newfoundland	2,857	2,736	2,642	2,812	2,942
Prince Edward Island	372	395	415	424	424
Nova Scotia	6,783	6,616	7,063	7,520	8,022
New Brunswick	4,278	4,297	4,375	4,378	4,660
Quebec	62,645	62,875	64,460	66,325	68,655
Ontario	137,802	141,035	145,855	151,190	157,607
Manitoba	10,397	10,769	10,792	10,936	11,097
Saskatchewan	11,173	11,322	11,515	11,738	12,349
Alberta	32,684	33,194	33,242	33,617	33,839
British Columbia	29,617	29,673	29,978	30,762	31,933
Yukon	232	240	234	259	281
Northwest Territories	983	1,082	1,193	1,255	1,371
Total [1]	299,821	304,235	311,765	321,214	333,179

Remuneration - Totals for the fiscal years ended March 31

Province or Territory	1985/86	1986/87	1987/88	1988/89	1989/90
(millions of dollars)					
Newfoundland	54	57	57	64	69
Prince Edward Island	6	7	8	9	9
Nova Scotia	136	136	149	162	179
New Brunswick	99	103	113	120	128
Quebec	1,616	1,676	1,807	1,927	2,106
Ontario	3,096	3,308	3,665	3,960	4,402
Manitoba	281	303	312	335	356
Saskatchewan	255	268	275	288	299
Alberta	859	906	926	955	1,014
British Columbia	739	739	803	841	920
Yukon	6	7	8	9	10
Northwest Territories	21	24	28	32	37
Total [2]	7,170	7,532	8,152	8,702	9,528

Note:

[1] Figures may not add due to averaging.

[2] Figures may not add due to rounding.

Disponible en français

Contact:

Mahed Fathy
Public Institutions Division
Statistics Canada
K1A 0T6

Telephone: (613) 951-1843

Facsimile: (613) 951-0661

Total Government Employment and Remuneration for the fiscal years 1985/86 to 1989/90

Employment - Averages for fiscal years ended March 31

Province or Territory	1985/86	1986/87	1987/88	1988/89	1989/90
(number of employees)					
Newfoundland	34,704	35,291	35,672	34,141	33,839
Prince Edward Island	8,454	8,548	8,681	8,758	8,815
Nova Scotia	61,937	61,129	61,006	62,484	62,702
New Brunswick	51,887	53,087	54,706	54,363	55,781
Quebec	237,054	235,300	237,001	239,047	245,208
Ontario	405,348	410,823	416,322	425,336	431,897
Manitoba	47,526	48,174	47,940	48,058	48,179
Saskatchewan	44,777	45,278	44,632	44,667	46,555
Alberta	129,575	131,450	127,857	127,957	131,347
British Columbia	117,013	122,278	118,625	117,774	115,108
Yukon	3,708	3,756	3,860	3,938	4,163
Northwest Territories	7,672	7,885	8,707	8,712	9,086
Outside Canada	14,004	14,892	15,039	15,740	16,385
Total [1]	1,163,659	1,177,890	1,180,048	1,190,972	1,209,060

Remuneration - Totals for fiscal years ended March 31

Province or Territory	1985/86	1986/87	1987/88	1988/89	1989/90
(millions of dollars)					
Newfoundland	758	806	865	897	955
Prince Edward Island	201	212	225	236	250
Nova Scotia	1,593	1,614	1,682	1,780	1,921
New Brunswick	1,275	1,316	1,415	1,490	1,602
Quebec	6,580	6,703	7,234	7,469	8,064
Ontario	10,695	11,297	12,112	12,995	13,969
Manitoba	1,277	1,339	1,379	1,474	1,547
Saskatchewan	1,170	1,246	1,203	1,230	1,311
Alberta	3,359	3,507	3,470	3,661	3,871
British Columbia	3,123	3,242	3,310	3,459	3,650
Yukon	115	124	134	144	163
Northwest Territories	269	286	295	316	346
Outside Canada	422	505	543	589	594
Total [2]	30,838	32,193	33,869	35,737	38,239

Note:

[1] Figures may not add due to averaging.

[2] Figures may not add due to rounding.

Disponible en français

Contact:

Ishtiaq Khan
Public Institutions Division
Statistics Canada
K1A 0T6

Telephone: (613) 951-8306

Facsimile: (613) 951-0661



Government Business Enterprises Financial Tables

- Federal Government Business Enterprises - Income and Expenses
- Federal Government Business Enterprises - Income and Expenses by Industry
- Federal Government Business Enterprises - Assets, Liabilities and Net Worth
- Federal Government Business Enterprises - Assets, Liabilities and Net Worth, by Industry
- Provincial and Territorial Government Business Enterprises - Income and Expenses, by Province
- Provincial and Territorial Government Business Enterprises - Income and Expenses, 1984 to 1988
- Provincial and Territorial Government Business Enterprises - Assets, Liabilities and Net Worth, by Province
- Provincial and Territorial Government Business Enterprises - Assets, Liabilities and Net Worth, 1984 to 1988

Provincial and Territorial Government Business Enterprises

Page 1/1

Income and Expenses, Canada Totals

for the fiscal years 1984 to 1988

	1984	1985	1986	1987	1988
INCOME	(millions of dollars)				
Sales of goods and services	29,316	30,413	31,441	32,252	34,470
Investment income	4,078	4,669	5,067	5,258	5,361
Subsidies	459	497	891	750	771
Other income	148	132	144	145	218
TOTAL INCOME	34,001	35,711	37,543	38,405	40,820
EXPENSES					
Materials and other purchases and Salaries and wages	18,686	18,901	19,416	19,895	21,144
Debt charges	8,800	10,117	10,982	10,913	10,698
Grants in lieu of taxes	75	73	76	79	90
Provision for depreciation & depletion	2,227	2,266	2,497	2,572	2,759
Other expenses	1,832	1,522	1,414	1,128	954
TOTAL EXPENSES	31,620	32,879	34,385	34,587	35,645
NET INCOME (LOSS)					
Net income (loss) BEFORE provision for income tax	2,381	2,832	3,158	3,818	5,175
Provision for income tax	4	3	35	23	5
Net income (loss) AFTER provision for income tax	2,377	2,829	3,123	3,795	5,170
Note: For the fiscal years-end nearest to December 31 Disponible en français	Contact: Richard Sauriol Public Institutions Division Statistics Canada K1A 0T6 Tel: (613) 951-1829 Fax: (613) 951-0661				

Provincial and Territorial Government Business Enterprises

Page 1/2

Assets, Liabilities, Net Worth, By Province

As at December 31, 1988

	NF	PE	NS	NB	PQ	ON
ASSETS	(millions of dollars)					
Cash on hand on deposit	59	5	68	103	927	258
Receivables	103	8	94	138	878	798
Accrued revenue and prepaid expenses	13	1	50	4	1,017	8
Inventories	45	4	86	89	568	1,635
Advances	-	6	35	142	23	1,450
Securities	266	7	320	441	29,666	358
Other financial assets	5	3	2	1	36	1,134
Net Fixed Assets	2,385	73	1,924	2,554	31,802	32,659
Deferred charges	51	5	30	106	1,313	739
Other assets	-	-	1	1	-	-
TOTAL ASSETS	2,927	112	2,610	3,579	66,230	39,039
LIABILITIES						
Bank overdrafts	1	-	-	-	1	-
Savings deposits	-	-	-	-	-	1,450
Payables	81	10	119	59	1,243	855
Accrued expenditure & deferred credits	47	1	84	99	1,032	1,150
Advances	461	58	866	556	30,962	1,394
Bonds and debentures	1,502	4	1,770	1,990	21,543	25,775
Other securities	128	12	163	27	1,379	514
Deposits	-	-	1	2	33	-
Minority interests	119	-	-	-	21	-
Other liabilities	33	1	29	178	201	960
TOTAL LIABILITIES	2,372	86	3,032	2,911	56,415	32,098
NET WORTH						
Capital Stock	55	8	24	-	6,362	275
Surplus	499	18	(446)	668	3,454	6,666
TOTAL NET WORTH	554	26	(422)	668	9,816	6,941
TOTAL LIABILITIES AND NET WORTH	2,926	112	2,610	3,579	66,231	39,039
Note:	<div> <div> Contact: Richard Sauriol Public Institutions Division Statistics Canada K1A 0T6 </div> <div> Tel: (613) 951-1829 Fax: (613) 951-0661 </div> </div>					
For the fiscal year ended nearest to December 31						
Disponible en français						

Provincial and Territorial Government Business Enterprises

Page 2/2

Assets, Liabilities, Net Worth, By Province

As at December 31, 1988

	MB	SK	AB	BC	YT	NT	CANADA TOTAL
ASSETS	(millions of dollars)						
Cash on hand on deposit	594	331	861	1,154	7	43	4,410
Receivables	267	399	237	383	5	27	3,337
Accrued revenue and prepaid expenses	55	178	149	210	-	1	1,686
Inventories	98	334	156	151	3	17	3,186
Advances	12	117	4,266	135	-	-	6,186
Securities	953	1,577	4,836	3,564	-	3	41,991
Other financial assets	127	31	15	268	-	-	1,622
Net Fixed Assets	4,908	6,494	3,707	11,280	115	245	98,146
Deferred charges	286	52	14	214	-	-	2,810
Other assets	-	24	-	-	-	-	26
TOTAL ASSETS	7,300	9,537	14,241	17,359	130	336	163,400
LIABILITIES							
Bank overdrafts	45	5	-	1	-	-	53
Savings deposits	-	-	6,813	-	-	-	8,263
Payables	123	316	218	504	7	31	3,566
Accrued expenditure & deferred credits	562	567	405	883	1	13	4,844
Advances	3,937	5,721	1,244	3,201	83	151	48,634
Bonds and debentures	1,480	354	5,693	7,549	-	20	67,680
Other securities	141	101	13	274	10	2	2,764
Deposits	-	1	25	44	-	1	107
Minority interests	-	-	-	-	-	-	140
Other liabilities	524	450	137	1,624	-	4	4,141
TOTAL LIABILITIES	6,812	7,515	14,548	14,080	101	222	140,192
NET WORTH							
Capital Stock	347	808	79	702	-	43	8,703
Surplus	141	1,214	(386)	2,577	29	71	14,505
TOTAL NET WORTH	488	2,022	(307)	3,279	29	114	23,208
TOTAL LIABILITIES AND NET WORTH	7,300	9,537	14,241	17,359	130	336	163,400
Note: For the fiscal year ended nearest to December 31 Disponible en français	Contact: Richard Sauriol Public Institutions Division Statistics Canada K1A 0T6 Tel: (613) 951-1829 Fax: (613) 951-0661						

Provincial and Territorial Government Business Enterprises

Page 1/1

Assets, Liabilities, Net Worth, Canada Totals

As at December 31, 1984 to 1988

	1984	1985	1986	1987	1988
ASSETS	(millions of dollars)				
Cash on hand and on deposit	2,753	2,201	2,908	3,453	4,410
Receivables	2,944	3,074	3,113	3,140	3,337
Accrued revenue and prepaid expenses	1,401	1,361	1,459	1,580	1,686
Inventories	2,815	2,900	2,950	2,964	3,186
Advances	3,842	4,295	5,018	5,817	6,186
Securities	28,566	31,357	34,642	37,744	41,991
Other financial assets	1,463	1,474	1,368	1,494	1,622
Net Fixed Assets	83,879	87,271	90,339	93,353	98,146
Deferred charges	5,687	7,082	6,612	5,507	2,810
Other assets	466	435	234	231	26
TOTAL ASSETS	133,816	141,450	148,643	155,283	163,400
LIABILITIES					
Bank overdrafts	38	44	42	67	53
Savings deposits	4,676	5,116	5,821	7,287	8,263
Payables	3,261	3,160	2,473	2,748	3,566
Accrued expenditure & deferred credits	4,113	4,065	4,394	4,632	4,844
Advances	34,846	37,805	40,866	44,636	48,634
Bonds and debentures	64,439	67,026	68,498	68,714	67,680
Other securities	1,387	2,177	3,544	2,817	2,764
Deposits	85	81	88	103	107
Minority interests	401	420	406	125	140
Other liabilities	2,505	3,064	3,362	3,509	4,141
TOTAL LIABILITIES	115,751	122,958	129,494	134,638	140,192
NET WORTH					
Capital Stock	7,287	7,300	7,813	7,545	8,703
Surplus	10,778	11,192	11,336	13,100	14,505
TOTAL NET WORTH	18,065	18,492	19,149	20,645	23,208
TOTAL LIABILITIES AND NET WORTH	133,816	141,450	148,643	155,283	163,400
Note:	<p>Contact:</p> <p>Richard Sauriol</p> <p>Public Institutions Division</p> <p>Statistics Canada</p> <p>K1A 0T6</p> <p>Tel: (613) 951-1829</p> <p>Fax: (613) 951-0661</p>				
For the fiscal years ended nearest to December 31					
Disponible en français					

Federal Government Business Enterprises [1]

Page 1/1

Income and Expenses
for the fiscal years 1985 to 1989

	1985	1986	1987	1988	1989
INCOME	(millions of dollars)				
Sales of goods and services	22,167	21,681	20,348	20,321	18,910
Investment income	2,663	2,580	2,415	2,326	2,432
Subsidies	1,689	1,649	1,664	1,845	1,811
Other income	160	582	321	622	329
TOTAL INCOME	26,679	26,492	24,748	25,114	23,482
EXPENSES					
Materials and other purchases and Salaries and wages	20,925	20,618	19,098	18,928	18,357
Debt charges	2,958	2,954	2,882	2,629	2,555
Grants in lieu of taxes	12	-	12	12	14
Provision for depreciation & depletion	1,196	1,249	1,228	1,156	1,034
Other expenses	2,359	2,064	1,637	1,572	1,634
TOTAL EXPENSES	27,450	26,885	24,857	24,297	23,593
NET INCOME (LOSS)					
Net income (loss) BEFORE provision for income tax	(771)	(393)	(109)	817	(111)
Provision for income tax	396	364	351	300	226
Net income (loss) AFTER provision for income tax	(1,167)	(757)	(460)	517	(337)
<div> <div> Note: [1] Does not include Monetary Authorities. fiscal years ended nearest to December 31 Disponible en français </div> <div> Contact: Jim Leeson Public Institutions Division Statistics Canada K1A 0T6 </div> <div> Tel: (613) 951-1816 Fax: (613) 951-0661 </div> </div>					

Federal Government Business Enterprises [1]

Page 1/1

Income and Expenses by Industry
for the fiscal year 1989

	Total all Industry	Transport	Communication	Manufacturing Mining and Wholesale	Finance Insurance Real Estate [1]	Government Services
INCOME	(millions of dollars)					
Sales of goods and services	18,910	6,135	3,641	8,897	232	4
Investment income	2,432	57	60	216	2,093	7
Subsidies	1,811	522	1,089	-	201	-
Other income	329	93	50	4	182	-
TOTAL INCOME	23,482	6,806	4,840	9,117	2,708	11
EXPENSES						
Materials and other purchases and Salaries and wages	18,357	5,975	4,594	7,421	347	21
Debt charges	2,555	232	8	282	2,033	-
Grants in lieu of taxes	14	14	-	-	-	-
Provision for depreciation & depletion	1,034	446	175	406	6	-
Other expenses	1,634	270	136	777	451	-
TOTAL EXPENSES	23,593	6,936	4,913	8,886	2,837	21
NET INCOME (LOSS)						
Net income (loss) BEFORE provision for income tax	(111)	(130)	(73)	231	(129)	(11)
Provision for income tax	226	104	-	84	37	-
Net income (loss) AFTER provision for income tax	(337)	(234)	(73)	147	(166)	(11)
Note: [1] Does not include the Monetary Authorities. for the fiscal year ended nearest to December 31 Disponible en français	Contact: Jim Leeson Public Institutions Division Statistics Canada K1A 0T6 Tel: (613) 951-1816 Fax: (613) 951-0661					

Federal Government Business Enterprises [1]

Page 1/1

Assets, Liabilities, Net Worth

As at December 31, 1985 to 1989

	1985	1986	1987	1988	1989
ASSETS	(millions of dollars)				
Cash on hand on deposit	1,694	1,617	1,604	2,200	1,951
Receivables	6,415	6,096	5,630	5,463	6,049
Accrued revenue and prepaid expenses	1,428	1,521	1,693	1,788	1,387
Inventories	3,762	2,629	2,465	1,294	2,262
Advances	12,497	12,564	11,314	11,326	11,264
Securities	12,847	12,851	12,327	12,044	12,523
Other financial assets	-	-	-	-	-
Net Fixed Assets	21,961	21,855	21,299	20,717	19,253
Deferred charges	1,300	1,381	1,266	1,067	679
Other assets	278	546	195	117	190
TOTAL ASSETS	62,182	61,060	57,793	56,016	55,557
LIABILITIES					
Bank overdrafts	63	105	26	62	121
Savings deposits	-	8	-	-	-
Payables	4,379	4,424	3,660	2,779	3,466
Accrued expenditure & deferred credits	4,427	4,610	4,277	4,502	4,031
Advances	25,698	22,953	21,683	20,502	19,398
Bonds and debentures	9,785	11,479	11,308	10,103	11,106
Other securities	2,357	1,994	2,527	3,227	2,864
Deposits	40	-	-	-	-
Minority interests	1,275	970	888	14	4
Other liabilities	3,681	3,724	2,096	2,234	2,510
TOTAL LIABILITIES	51,705	50,267	46,465	43,423	43,481
NET WORTH					
Capital Stock	8,366	8,223	8,057	7,994	6,896
SURPLUS	2,111	2,570	3,271	4,599	5,180
TOTAL NET WORTH	10,477	10,793	11,328	12,593	12,076
TOTAL LIABILITIES AND NET WORTH	62,182	61,060	57,793	56,016	55,557
<p>Note:</p> <p>[1] Does not include the Monetary Authorities. fiscal years ended nearest to December 31 Disponible en français</p>					
<p>Contact:</p> <p>Jim Leeson Public Institutions Division Statistics Canada K1A 0T6</p> <p>Tel: (613) 951-1816 Fax: (613) 951-0661</p>					

Federal Government Business Enterprises [1]

Page 1/1

Assets, Liabilities, Net Worth by Industry

As at December 31, 1989

	Total all Industry	Transportation	Communication	Manufacturing Mining and Wholesale	Finance Insurance Real Estate	Government Services
ASSETS	(millions of dollars)					
Cash on hand on deposit	1,951	287	30	98	1,329	207
Receivables	6,049	1,216	200	4,378	165	90
Accrued revenue and prepaid expenses	1,387	281	70	396	640	-
Inventories	2,262	420	99	1,743	-	-
Advances	11,264	18	-	2	10,710	535
Securities	12,523	806	426	804	10,486	-
Other financial assets	-	-	-	-	-	-
Net Fixed Assets	19,253	9,841	2,563	4,785	2,064	-
Deferred charges	679	466	51	117	45	-
Other assets	190	61	82	2	45	-
TOTAL ASSETS	55,557	13,396	3,520	12,325	25,484	831
LIABILITIES						
Bank overdrafts	121	42	71	-	8	-
Savings deposits	-	-	-	-	-	-
Payables	3,446	1,272	418	1,543	123	90
Accrued expenditure & deferred credits	4,031	1,688	341	1,424	578	-
Advances	19,398	629	160	3,712	14,202	695
Bonds and debentures	11,106	2,589	-	1,796	6,721	-
Other securities	2,864	-	-	710	2,154	-
Deposits	-	-	-	-	-	-
Minority interests	4	4	-	-	-	-
Other liabilities	2,510	635	438	5	1,426	5
TOTAL LIABILITIES	43,481	6,859	1,429	9,190	25,212	791
NET WORTH						
Capital stock	6,896	3,110	-	3,064	722	-
Surplus	5,180	3,426	2,091	72	(450)	40
TOTAL NET WORTH	12,076	6,537	2,091	3,136	272	41
TOTAL LIABILITIES AND NET WORTH	55,557	13,396	3,520	12,325	25,484	831
Note: [1] Does not include the Monetary Authorities for the fiscal year ended nearest to December 31 Disponible en français	Contact: Jim Leeson Public Institutions Division Statistics Canada K1A 0T6 Tel: (613) 951-1816 Fax: (613) 951-0661					

Provincial and Territorial Government Business Enterprises

Income and Expenses, By Province
for the fiscal year 1988

Page 1/2

	NF	PE	NS	NB	PQ	ON
INCOME	(millions of dollars)					
Sales of goods and services	600	101	1,037	1,144	8,918	9,374
Investment income	67	10	46	75	2,928	238
Subsidies	61	1	5	18	69	101
Other income	7	3	9	5	11	1
TOTAL INCOME	735	115	1,097	1,242	11,926	9,714
EXPENSES						
Materials and other purchases and Salaries and wages	416	92	729	723	4,508	5,314
Debt charges	167	7	251	252	4,887	1,935
Grants in lieu of taxes	1	1	5	-	-	5
Provision for depreciation & depletion	32	1	79	94	630	772
Other expenses	15	1	118	15	312	106
TOTAL EXPENSES	631	102	1,182	1,084	10,337	8,132
NET INCOME (LOSS)						
Net income (loss) BEFORE provision for income tax	104	13	(85)	158	1,589	1,582
Provision for income tax	2	1	-	-	-	-
Net income (loss) AFTER provision for income tax	102	12	(85)	158	1,589	1,582
Note: For the fiscal year ended nearest to December 31 Disponible en français	Contact: Richard Sauriol Public Institutions Division Statistics Canada K1A 0T6 Tel: (613) 951-1829 Fax: (613) 951-0661					

Provincial and Territorial Government Business Enterprises

Page 2/2

Income and Expenses, By Province
for the fiscal year 1988

	MB	SK	AB	BC	YT	NT	CANADA TOTAL
INCOME	(millions of dollars)						
Sales of goods and services	1,990	3,016	2,532	5,609	43	106	34,470
Investment income	142	253	1,130	465	3	4	5,361
Subsidies	31	39	70	334	-	42	771
Other income	18	70	72	20	-	2	218
TOTAL INCOME	2,181	3,378	3,804	6,428	46	154	40,820
EXPENSES							
Materials and other purchases and Salaries and wages	1,343	1,899	1,767	4,153	25	175	21,144
Debt charges	392	489	1,212	1,081	5	20	10,698
Grants in lieu of taxes	13	28	33	4	-	-	90
Provision for depreciation & depletion	215	329	249	339	3	16	2,759
Other expenses	10	141	141	95	-	-	954
TOTAL EXPENSES	1,973	2,886	3,402	5,672	33	211	35,645
NET INCOME (LOSS)							
Net income (loss) BEFORE provision for income tax	208	492	402	756	13	(57)	5,175
Provision for income tax	-	2	-	-	-	-	5
Net income (loss) AFTER provision for income tax	208	490	402	756	13	(57)	5,170
Note: For the fiscal year ended nearest to December 31 Disponible en français	Contact: Richard Sauriol Public Institutions Division Statistics Canada K1A 0T6 Tel: (613) 951-1829 Fax: (613) 951-0661						

Government Business Enterprises Employment and Remuneration Tables

- **Federal Government Business Enterprises Employment and
Remuneration**
- **Provincial and Territorial Government Business Enterprises Employment
and Remuneration**

Federal Government Business Enterprises Employment and Remuneration

For the fiscal years 1985/86 to 1989/90

Employment - Averages for fiscal years ended March 31

Province or Territory	1985/86	1986/87	1987/88	1988/89	1989/90
(number of employees)					
Newfoundland	5,583	5,331	5,394	5,424	5,321
Prince Edward Island	942	937	976	929	914
Nova Scotia	6,158	6,378	6,245	6,055	5,333
New Brunswick	7,871	7,732	7,645	7,547	6,946
Quebec	60,896	58,572	50,047	47,610	39,192
Ontario	70,469	69,074	70,483	68,015	59,148
Manitoba	15,175	14,952	14,912	14,552	12,167
Saskatchewan	6,453	6,616	6,414	6,255	5,662
Alberta	18,342	17,699	17,911	17,848	16,132
British Columbia	17,356	17,396	17,340	16,217	13,702
Yukon	508	496	472	461	445
Northwest Territories	650	599	571	543	355
Outside Canada	5,740	5,728	5,707	5,677	5,233
Total [1]	216,142	211,508	204,115	197,134	170,550

Remuneration - Totals for fiscal years ended March 31

Province or Territory	1985/86	1986/87	1987/88	1988/89	1989/90
(millions of dollars)					
Newfoundland	145	144	160	170	174
Prince Edward Island	24	25	28	27	27
Nova Scotia	167	178	183	190	172
New Brunswick	220	229	245	255	249
Quebec	1,832	1,787	1,612	1,709	1,384
Ontario	2,161	2,148	2,201	2,302	1,933
Manitoba	438	443	456	489	426
Saskatchewan	172	181	183	197	188
Alberta	594	562	612	636	591
British Columbia	509	530	515	548	447
Yukon	15	17	19	16	16
Northwest Territories	23	22	22	22	14
Outside Canada	231	200	202	204	190
Total [2]	6,532	6,466	6,437	6,764	5,814

Note:

- [1] Figures may not add due to averaging.
 [2] Figures may not add due to rounding.

Disponible en français

Contact:

Christine Dominguez
 Public Institutions Division
 Statistics Canada
 K1A 0T6

Telephone: (613) 951-8510
 Facsimile: (613) 951-0661

Provincial and Territorial Government Business Enterprises

Employment and Remuneration for the fiscal years 1985/86 to 1989/90

Employment - Averages for fiscal years ended March 31

Province or Territory	1985/86	1986/87	1987/88	1988/89	1989/90
(number of employees)					
Newfoundland	2,979	2,928	3,087	3,295	3,072
Prince Edward Island	277	276	275	283	298
Nova Scotia	4,720	4,868	4,922	4,935	4,946
New Brunswick	4,132	4,229	4,324	4,420	4,415
Quebec	41,309	39,529	36,467	35,714	35,859
Ontario	39,789	41,320	41,645	41,945	44,411
Manitoba	11,738	11,860	12,097	12,504	12,308
Saskatchewan	13,790	13,592	12,933	12,421	13,148
Alberta	17,248	17,065	17,042	16,516	17,441
British Columbia	21,333	21,829	21,811	21,805	21,830
Yukon	79	75	81	76	94
Northwest Territories	146	168	157	169	175
Total [1]	157,539	157,739	154,840	154,082	157,995

Remuneration - Totals for fiscal years ended March 31

Province or Territory	1985/86	1986/87	1987/88	1988/89	1989/90
(millions of dollars)					
Newfoundland	77	74	80	95	98
Prince Edward Island	6	6	6	6	7
Nova Scotia	126	135	140	148	159
New Brunswick	119	128	137	141	151
Quebec	1,498	1,451	1,340	1,425	1,377
Ontario	1,390	1,520	1,544	1,691	1,856
Manitoba	348	353	382	412	427
Saskatchewan	447	445	427	423	462
Alberta	478	484	497	484	537
British Columbia	681	715	725	721	757
Yukon	2	2	3	3	4
Northwest Territories	5	6	6	8	9
Total [2]	5,177	5,320	5,288	5,557	5,843

Note:

[1] Figures may not add due to averaging.

[2] Figures may not add due to rounding.

Disponible en français

Contact:

Peter Dudley
Public Institutions Division
Statistics Canada
K1A 0T6

Telephone: (613) 951-1851

Facsimile: (613) 951-0661

Social Security Tables

- Canada and Quebec Pension Plan - Beneficiaries
- Canada and Quebec Pension Plan - Benefit Payments
- Old Age Security - Beneficiaries
- Old Age Security - Benefit Payments
- Family Allowances Recipients
- Family Allowances Paid and Child Tax Credit Allowed
- Canada Assistance Plan: Total Federal-Provincial Cost-Shared
Expenditure

Canada and Quebec Pension Plan – Beneficiaries

Page 1/2

for the years 1981 to 1990

	Total benefits[1]		Disability benefits			
			Retirement pensions	Disability pensions	Children's benefits	
					Under age 18	Age 18 and over
(number of beneficiaries)						
Canada Pension Plan						
1981	1,274,306	838,038	88,398	28,903	5,285	
1982	1,359,861	899,378	95,617	29,516	6,124	
1983	1,455,953	957,935	108,290	33,055	8,119	
1984	1,547,253	1,018,602	119,544	34,980	9,546	
1985	1,633,037	1,088,123	127,346	35,362	8,902	
1986	1,741,170	1,163,742	143,166	37,711	10,293	
1987	1,941,898	1,337,755	149,706	37,437	10,181	
1988	2,114,217	1,486,570	157,078	38,221	11,631	
1989	2,335,711	1,645,485	186,244	46,647	14,622	
1990	2,463,222	1,753,305	195,894	48,397	15,335	
Quebec Pension Plan						
1981	406,069	241,222	22,771	7,265	1,990	
1982	434,342	259,800	25,274	7,369	2,266	
1983	463,470	278,087	28,757	7,666	2,702	
1984	518,241	320,936	31,102	7,561	2,801	
1985	577,695	366,945	37,293	8,334	3,322	
1986	627,317	409,764	40,114	8,274	3,311	
1987	666,847	442,750	42,392	8,205	3,288	
1988	702,141	472,980	43,690	7,923	2,979	
1989	736,176	503,354	43,711	7,356	2,902	
1990	771,838	537,675	43,317	7,014	2,675	
Canada and Quebec Pension Plans						
1981	1,680,375	1,079,260	111,169	36,168	7,275	
1982	1,794,203	1,159,178	120,891	36,885	8,390	
1983	1,919,423	1,236,022	137,047	40,721	10,821	
1984	2,065,494	1,339,538	150,646	42,541	12,347	
1985	2,210,732	1,455,068	164,639	43,696	12,224	
1986	2,368,487	1,573,506	183,280	45,985	13,604	
1987	2,608,745	1,780,505	192,098	45,642	13,469	
1988	2,816,358	1,959,550	200,768	46,144	14,610	
1989	3,071,887	2,148,839	229,955	54,003	17,524	
1990	3,235,060	2,290,980	239,211	55,411	18,010	
Note:			Contact:			
[1] "Total" excludes death benefits as per Department of National Health and Welfare convention. The total equals the sum of all beneficiaries (except for death benefits) minus combined benefits beneficiaries.			Esther Henter			
As of March.			Public Institutions Division			
Disponible en français			Statistics Canada			
			K1A 0T6			
			Tel:(613)951-1651			
			Fax:(613)951-0661			

Canada and Quebec Pension Plan – Beneficiaries

Page 2/2

for the years 1981 to 1990

	Survivors' benefits				Combined pensions[2]
	Death benefits	Surviving spouses' pensions	Orphans' benefits		
			Under age 18	Age 18 and over	
(number of beneficiaries)					
Canada Pension Plan					
1981	3,581	255,973	84,789	16,714	43,794
1982	4,488	282,424	82,083	18,347	53,628
1983	5,706	312,213	79,259	22,054	64,972
1984	4,824	341,397	76,390	24,091	77,297
1985	3,245	367,788	72,365	23,558	90,407
1986	5,491	398,361	70,169	24,194	106,466
1987	5,601	448,184	67,734	23,358	132,457
1988	6,784	490,432	66,679	26,019	162,413
1989	6,803	533,903	68,813	27,407	187,410
1990	6,204	567,252	67,089	26,922	210,972
Quebec Pension Plan					
1981	2,786	98,178	33,958	9,145	8,460
1982	3,109	108,205	32,658	9,442	10,672
1983	3,084	118,335	30,820	10,210	13,107
1984	2,776	133,605	29,238	10,536	17,538
1985	3,471	146,406	28,401	10,699	23,705
1986	2,773	158,193	27,470	9,957	29,766
1987	3,032	169,688	26,570	9,508	35,554
1988	4,882	181,372	25,725	8,858	41,386
1989	2,492	192,404	25,057	8,703	47,311
1990	3,012	203,294	24,419	8,399	54,955
Canada and Quebec Pension Plans					
1981	6,367	354,151	118,747	25,859	52,254
1982	7,597	390,629	114,741	27,789	64,300
1983	8,790	430,548	110,079	32,264	78,079
1984	7,600	475,002	105,628	34,627	94,835
1985	6,716	514,194	100,766	34,257	114,112
1986	8,264	556,554	97,639	34,151	136,232
1987	8,633	617,872	94,304	32,866	168,011
1988	11,666	671,804	92,404	34,877	203,799
1989	9,295	726,307	93,870	36,110	234,721
1990	9,216	770,546	91,508	35,321	265,927
Note:			Contact:		
[2] "Combined Pensions" includes those who received a surviving spouse's pension combined with a disability or retirement pension. Those counted under "combined pensions" are also counted under the individual components.			Esther Henter		
As of March. Disponible en français			Public Institutions Division		
			Statistics Canada		
			K1A 0T6		
			Tel: (613) 951-1651		
			Fax: (613) 951-0661		

Canada and Quebec Pension Plan – Benefit Payments

Page 1/2

for the fiscal years 1981/82 to 1989/90

	Total benefits paid [1]	Retirement pensions	Disability benefits		
			Disability pensions	Children's benefits	
				Under age 18	Age 18 and over
(millions of dollars)					
Canada Pension Plan					
1981/82	2,456	1,597	281	28	7
1982/83	3,036	1,978	355	35	9
1983/84	3,657	2,363	444	42	12
1984/85	4,223	2,762	527	46	14
1985/86	4,887	3,206	630	53	17
1986/87	5,721	3,774	769	54	17
1987/88	7,329	4,808	1,110	60	19
1988/89	8,445	5,570	1,319	69	23
1989/90	9,473	6,290	1,470	76	26
Quebec Pension Plan					
1981/82	856	473	112	3	1
1982/83	1,047	586	141	3	1
1983/84	1,281	722	173	3	1
1984/85	1,629	929	225	4	2
1985/86	1,900	1,120	250	4	2
1986/87	2,133	1,280	276	4	2
1987/88	2,406	1,473	299	3	2
1988/89	2,664	1,665	312	3	1
1989/90	2,956	1,887			
Canada and Quebec Pension Plans					
1981/82	3,312	2,070	392	31	8
1982/83	4,083	2,564	496	38	10
1983/84	4,938	3,085	617	45	14
1984/85	5,852	3,691	752	50	16
1985/86	6,787	4,326	879	56	18
1986/87	7,854	5,054	1,045	58	19
1987/88	9,736	6,281	1,408	64	21
1988/89	11,109	7,235	1,632	72	25
1989/90	12,429	8,177	1,798	79	28
Note:			Contact:		
[1] Total excludes "Combined Pensions" as this category's beneficiaries are also counted under the individual program components.			Esther Henter		
Fiscal years ending March 31.			Public Institutions Division		
Disponible en français			Statistics Canada		
			K1A 0T6		
			Tel:(613)951-1651		
			Fax:(613)951-0661		

Canada and Quebec Pension Plan – Benefit Payments

Page 2/2

for the fiscal years 1981/82 to 1989/90

	Survivors' benefits				Combined pensions[2]
	Death benefits	Surviving spouses' pensions	Orphans' benefits		
			Under age 18	Age 18 and over	
(millions of dollars)					
Canada Pension Plan					
1981/82	55	403	68	17	118
1982/83	70	494	73	22	163
1983/84	79	592	81	24	217
1984/85	86	678	80	30	276
1985/86	104	763	82	32	345
1986/87	113	876	84	33	448
1987/88	132	1,076	88	36	671
1988/89	139	1,201	87	38	841
1989/90	149	1,336	88	39	1,007
Quebec Pension Plan					
1981/82	20	231	12	4	..
1982/83	22	278	12	4	..
1983/84	27	340	11	4	..
1984/85	32	423	10	4	77
1985/86	38	473	10	4	107
1986/87	42	516	10	4	138
1987/88	47	569	9	4	171
1988/89	47	621	9	4	206
1989/90	52	670	9	4	247
Canada and Quebec Pension Plans					
1981/82	76	633	80	21	118
1982/83	92	772	85	26	163
1983/84	105	931	92	28	217
1984/85	118	1,100	90	34	276
1985/86	142	1,236	92	37	345
1986/87	155	1,392	93	37	585
1987/88	179	1,645	97	40	842
1988/89	186	1,822	96	41	1,047
1989/90	201	2,005	97	43	1,254

Note:

[2] The sum of benefits paid to beneficiaries who receive payments under more than one component.

Fiscal years ending March 31.

Contact:

Esther Henter

Public Institutions Division

Statistics Canada

K1A 0T6

Tel:(613)951-1651

Fax:(613)951-0861

Old Age Security – Beneficiaries

for the years 1981 to 1990

Page 1/1

	NF	PE	NS	NB	PQ	ON	MB	SK	AB	BC	YT	NT	INT.[1]	TOTAL
Number of beneficiaries [2]														
1981	46,894	15,468	96,397	73,615	585,746	866,192	124,790	118,936	162,283	294,754	713	1,256	976	2,388,020
1982	48,271	15,704	98,705	75,731	604,290	890,197	127,241	121,748	166,851	303,425	735	1,307	1,467	2,455,672
1983	49,562	15,986	100,866	77,431	619,331	909,832	129,385	123,639	171,062	311,547	762	1,360	2,446	2,513,209
1984	50,975	16,259	103,041	79,324	635,262	932,658	131,578	126,007	176,421	321,201	778	1,412	3,855	2,578,771
1985	52,486	16,509	105,763	81,497	654,242	963,855	134,867	129,133	183,546	333,227	791	1,414	5,272	2,662,602
1986	55,246	17,038	110,284	85,160	687,810	1,012,562	139,304	132,802	192,922	350,291	866	1,451	8,800	2,794,536
1987	56,594	17,179	112,528	87,070	710,286	1,049,664	142,089	135,570	201,059	365,091	924	1,527	12,687	2,892,268
1988	57,685	17,347	114,389	88,839	730,497	1,080,962	144,365	137,694	207,737	377,196	956	1,554	16,045	2,975,266
1989	58,509	17,410	115,632	90,059	750,659	1,110,431	146,063	139,596	214,157	389,236	986	1,587	19,352	3,053,677
1990	59,305	17,569	116,980	91,547	770,641	1,139,443	147,965	141,665	221,265	400,666	1,026	1,647	23,392	3,133,111
As a percentage of total population														
1981	8.3	12.6	11.4	10.6	9.1	10.0	12.2	12.3	7.3	10.7	3.1	2.7	..	9.8
1982	8.5	12.8	11.6	10.9	9.4	10.2	12.3	12.5	7.2	10.9	3.1	2.8	..	10.0
1983	8.7	12.9	11.8	11.0	9.6	10.3	12.4	12.5	7.3	11.1	3.3	2.8	..	10.1
1984	8.9	13.0	11.9	11.2	9.8	10.5	12.5	12.6	7.5	11.3	3.4	2.8	..	10.3
1985	9.2	13.1	12.1	11.5	10.0	10.7	12.7	12.8	7.8	11.6	3.4	2.7	..	10.6
1986	9.7	13.5	12.6	12.0	10.5	11.1	13.0	13.1	8.1	12.1	3.7	2.8	..	11.0
1987	10.0	13.5	12.8	12.2	10.8	11.3	13.2	13.3	8.5	12.5	3.8	2.9	..	11.3
1988	10.1	13.5	13.0	12.4	11.0	11.5	13.3	13.6	8.7	12.7	3.8	3.0	..	11.5
1989	10.2	13.4	13.1	12.5	11.2	11.6	13.5	13.9	8.8	12.7	3.9	3.0	..	11.6
1990 [3]	10.3	13.5	13.1	12.6	11.4	11.7	13.6	14.2	9.0	12.8	3.9	3.1	..	11.8
Note:									Contact:					
(1) Receiving Canadian Old Age Security benefits under international agreements on social security.									Esther Henter					
(2) Pensioners and Spouse's Allowance recipients.									Public Institutions Division					
(3) Based on preliminary postcensal estimates.									Statistics Canada					
March for beneficiaries and June for population.									K1A 0T6					
Disponible en français									Tel: (613) 951-1651					
									Fax: (613) 951-0661					

Old Age Security – Benefit Payments

Page 1/2

for the fiscal years 1981/82 to 1989/90

	NF	PE	NS	NB	PQ	ON	MB	SK	AB	BC	YT	NT	INT[1]	TOTAL
(millions of dollars)														
Total net payments														
1981/82	200	62	371	287	2,246	2,941	445	427	578	1,017	3	6	3	8,585
1982/83	225	69	416	324	2,538	3,297	494	475	648	1,142	3	7	6	9,643
1983/84	245	74	448	350	2,733	3,555	530	510	702	1,239	3	7	10	10,406
1984/85	269	80	488	382	2,987	3,901	580	557	777	1,367	4	8	18	11,418
1985/86	296	87	532	418	3,279	4,276	628	603	855	1,503	4	9	35	12,525
1986/87	316	91	566	445	3,505	4,604	665	639	924	1,626	5	10	49	13,445
1987/88	335	95	596	470	3,741	4,923	702	676	994	1,745	5	10	57	14,349
1988/89	350	99	622	493	3,972	5,220	736	709	1,059	1,860	5	11	66	15,202
1989/90	370	104	653	520	4,240	5,535	772	748	1,132	1,985	6	12	78	16,154
Basic pension														
1981/82	116	39	244	187	1,499	2,245	318	304	419	763	2	3	2	6,141
1982/83	132	44	278	212	1,712	2,559	361	346	480	873	2	4	3	7,005
1983/84	146	48	302	232	1,871	2,788	391	376	526	957	2	4	4	7,649
1984/85	157	51	323	248	2,007	3,001	417	401	568	1,032	3	4	5	8,216
1985/86	168	53	345	265	2,157	3,245	444	426	616	1,121	3	5	9	8,858
1986/87	179	56	368	282	2,314	3,495	471	452	666	1,215	3	5	13	9,520
1987/88	192	59	392	301	2,494	3,768	502	481	720	1,315	3	5	16	10,248
1988/89	203	62	414	320	2,671	4,041	530	508	774	1,411	4	6	19	10,963
1989/90	217	66	441	341	2,885	4,350	564	542	837	1,527	4	6	23	11,804

Note:

[1] Receiving Canadian Old Age Security benefits under international agreements on social security.

Fiscal year ending March 31.

Disponible en français

Contact:

Esther Henter
Public Institutions Division
Statistics Canada
K1A 0T6

Tel: (613) 951-1651
Fax: (613) 951-0661

Old Age Security – Benefit Payments

Page 2/2

for the fiscal years 1981/82 to 1989/90

	NF	PE	NS	NB	PQ	ON	MB	SK	AB	BC	YT	NT	INT[1]	TOTAL
(millions of dollars)														
Guaranteed Income Supplement														
1981/82	73	21	115	90	681	648	116	112	147	235	1	2	1	2,242
1982/83	81	22	125	100	753	686	122	118	155	249	1	3	3	2,416
1983/84	86	24	132	106	786	711	126	123	162	260	1	3	5	2,524
1984/85	99	27	150	121	902	839	150	144	193	310	1	3	12	2,953
1985/86	110	30	166	135	1,010	944	166	160	217	350	1	4	25	3,319
1986/87	115	31	172	140	1,043	978	172	167	228	367	1	4	34	3,451
1987/88	120	32	178	145	1,098	1,020	179	174	243	385	1	4	39	3,618
1988/89	125	32	182	150	1,150	1,050	185	181	255	404	1	4	44	3,766
1989/90	130	33	187	155	1,204	1,067	187	186	264	416	2	5	52	3,888
Spouse's Allowance														
1981/82	11	2	12	11	66	47	10	11	13	19	--	--	--	203
1982/83	12	2	14	12	73	52	11	11	13	20	--	--	--	221
1983/84	13	2	14	13	76	56	12	11	14	22	--	--	--	233
1984/85	13	3	15	13	79	61	13	12	16	24	--	--	--	249
1985/86	18	4	20	19	112	88	17	16	21	33	--	--	1	348
1986/87	22	4	26	23	148	130	22	20	29	44	--	1	2	473
1987/88	23	4	26	24	149	135	22	21	31	45	--	1	2	483
1988/89	22	4	25	23	151	128	21	21	30	44	--	1	3	473
1989/90	23	4	25	23	152	119	20	20	30	42	--	1	3	461
Note:										Contact:				
[1] Receiving Canadian Old Age Security benefits under international agreements on social security.										Esther Henter				
Fiscal year ending March 31.										Public Institutions Division				
Disponible en français										Statistics Canada				
										K1A 0T6				
										Tel: (613) 951-1651				
										Fax: (613) 951-0661				

Family Allowances Recipients

Page 1/1

for the years 1981 to 1990

	NF	PE	NS	NB	PQ	ON	MB	SK	AB	BC	YT	NT	CAN
Number of families receiving													
1981	96,182	18,501	128,873	110,064	958,535	1,269,254	147,400	141,655	330,895	389,435	3,802	7,982	3,602,578
1982	96,467	18,440	128,337	109,680	955,553	1,259,428	147,007	142,058	340,508	392,119	3,936	8,153	3,601,686
1983	97,113	18,351	128,044	109,893	946,956	1,257,876	147,579	142,977	349,018	393,595	3,813	8,551	3,603,766
1984	97,254	18,374	128,265	109,933	938,395	1,256,230	148,205	144,122	351,674	396,340	3,748	8,817	3,601,357
1985	96,785	18,463	128,110	109,963	931,472	1,259,425	149,103	145,544	350,432	397,843	3,873	9,127	3,600,140
1986	96,282	18,575	128,172	109,587	930,914	1,267,066	150,303	145,860	354,141	398,421	3,767	9,264	3,612,352
1987	95,481	18,498	128,073	109,111	931,858	1,280,235	150,804	145,742	354,981	398,931	4,005	9,270	3,626,989
1988	94,399	18,615	127,449	108,385	930,188	1,293,463	150,627	144,534	353,163	400,882	4,098	9,364	3,635,167
1989	93,455	18,729	126,677	107,682	931,135	1,301,621	149,875	142,336	355,282	404,332	4,192	9,529	3,644,845
1990	92,435	18,734	126,247	107,223	936,536	1,314,398	149,452	140,109	357,657	412,327	4,182	9,683	3,668,983
Percentage of all families													
1981	71.2	61.3	59.6	62.3	57.3	55.7	56.2	57.7	58.5	53.5	66.7	84.0	57.0
1982	70.8	60.7	58.7	61.6	56.6	54.6	55.5	57.0	57.7	52.9	65.6	82.4	56.1
1983	69.9	59.6	57.8	60.8	55.6	53.8	54.9	56.6	57.9	52.4	66.9	83.0	55.4
1984	69.3	58.7	57.0	60.0	54.6	52.9	54.5	56.1	58.2	51.9	65.8	82.4	54.7
1985	68.4	58.2	56.1	59.3	53.7	52.2	54.2	56.0	57.6	51.6	66.8	82.2	54.0
1986	67.8	57.9	55.6	58.6	53.1	51.8	54.1	55.9	57.3	51.3	64.9	82.7	53.6
1987	66.6	56.9	55.1	57.9	52.6	51.6	54.0	55.8	57.6	51.2	63.6	82.0	53.3
1988	65.1	56.2	54.4	57.0	52.1	51.3	53.7	55.7	57.1	50.8	62.1	80.7	52.9
1989	63.5	55.4	53.5	55.9	51.7	50.9	53.4	55.3	56.6	50.3	62.6	79.4	52.4
1990[1]	61.8	54.8	52.6	54.9	51.4	50.6	53.1	55.2	55.8	50.0	59.7	78.7	52.0
Note:							Contact:						
[1] Based on preliminary postcensal estimates.							Esther Henter						
As of March for recipients and June for all families.							Public Institutions Div						
Disponible en français							Statistics Canada						
							K1A 0T6						
							Tel: (613) 951-1651						
							Fax: (613) 951-0661						

Family Allowances Paid and Child Tax Credit Allowed

Page 1/1

	NF	PE	NS	NB	PQ	ON	MB	SK	AB	BC	YT	NT	OC[1]	TOTAL
(millions of dollars)														
Family Allowances [2]														
1981/82	61	11	74	64	513	699	88	87	195	218	2	6	.. [3]	2,020
1982/83	66	12	80	70	574	764	96	96	223	241	3	7	..	2,231
1983/84	69	13	83	73	586	800	101	102	236	254	2	7	..	2,327
1984/85	70	13	86	75	598	837	106	108	246	267	3	8	..	2,418
1985/86	71	14	89	77	615	870	110	112	256	276	3	8	..	2,501
1986/87	70	14	89	76	625	885	112	113	261	279	3	8	..	2,534
1987/88	69	14	89	76	628	904	113	114	263	283	3	8	..	2,564
1988/89	68	14	89	76	635	927	114	115	266	290	3	8	..	2,606
1989/90	67	14	90	76	646	948	116	115	272	300	3	8	..	2,654
Child Tax Credit [4]														
1981	39	8	48	42	300	343	54	50	81	98	1	3	2	1,069
1982	56	10	64	60	413	485	77	69	125	147	1	5	2	1,514
1983	50	9	57	54	387	487	67	67	122	140	1	5	2	1,447
1984	51	11	58	58	391	488	74	73	134	149	2	5	1	1,494
1985	56	11	58	56	402	451	76	71	137	157	1	5	2	1,484
1986	60	11	61	58	430	458	82	85	156	164	2	5	2	1,573
1987	59	12	63	62	439	474	86	86	169	179	2	6	2	1,639
1988	69	14	76	72	526	568	103	106	207	215	2	8	2	1,968
Note:							Contact:							
Family Allowances adjusted for retroactive payments and recoveries.							Esther Henter							
[1] Resident outside the country.							Public Institutions Division							
[2] During fiscal year ending March 31.							Statistics Canada							
[3] Included in province of last residence.							K1A 0T6							
[4] For calendar year.							Tel: (613) 951-1651							
Disponible en français							Fax: (613) 951-0661							

Canada Assistance Plan: Total Federal-Provincial Cost-Shared Expenditure

Page 1/1

for the fiscal years 1981/82 to 1989/90

	NF	PE	NS	NB	PQ	ON	MB	SK	AB	BC	YT	NT	CAN
	(millions of dollars)												
	Total amount cost-shared												
1981/82	118	32	142	180	1,986	1,238	170	174	480	682	4	18	5,224
1982/83	132	36	172	216	2,330	1,484	184	240	612	948	6	20	6,380
1983/84	142	34	186	224	2,798	1,662	218	286	652	1,062	4	20	7,286
1984/85	148	36	210	252	3,026	1,888	264	288	668	1,198	4	20	8,002
1985/86	152	42	208	274	3,212	2,104	282	298	780	1,186	6	24	8,568
1986/87	170	40	254	290	3,092	2,264	310	322	852	1,264	-	24	8,882
1987/88	176	44	258	304	3,162	2,640	328	316	886	1,306	6	28	9,453
1988/89	182	46	306	300	3,308	3,022	396	310	976	1,326	16	30	10,216
1989/90	202	48	314	318	3,448	3,522	388	306	1,026	1,388	12	34	11,006
	As a percentage of GDP												
1981/82	2.5	3.2	1.9	3.0	2.4	0.9	1.3	1.2	1.0	1.5	0.9	2.3	1.5
1982/83	2.6	3.4	2.0	3.3	2.7	1.1	1.3	1.6	1.2	2.1	1.3	1.9	1.7
1983/84	2.6	2.9	1.9	3.0	3.0	1.1	1.5	1.9	1.2	2.2	1.0	1.7	1.8
1984/85	2.5	2.8	2.0	3.0	3.0	1.1	1.6	1.8	1.1	2.3	0.9	1.4	1.8
1985/86	2.4	3.2	1.7	3.0	3.0	1.1	1.6	1.7	1.2	2.2	1.3	1.4	1.8
1986/87	2.5	2.7	2.0	2.9	2.6	1.1	1.7	1.9	1.5	2.2	0.0	1.4	1.8
1987/88	2.4	2.8	1.9	2.8	2.4	1.2	1.7	1.8	1.5	2.1	0.8	1.5	1.7
1988/89	2.3	2.6	2.1	2.6	2.3	1.2	1.8	1.7	1.5	1.9	2.1	1.6	1.7
1989/90	2.4	2.6	2.0	2.5	2.2	1.3	1.7	1.5	1.5	1.9	1.4	1.7	1.7

Note:

Expenditures are shown for the years in which payments were made to the provinces. Payments include reimbursements to provinces for expenditures made in previous years. To obtain percentages in relation to GDP, expenditure figures, which are shown for fiscal years, have been divided by the GDP of the calendar year that is most closely related to the fiscal year.

Fiscal years ending March 31.

Disponible en français.

Contact:

Esther Henter
Public Institutions Division
Statistics Canada
K1A 0T6

Tel: (613) 951-1651
Fax: (613) 951-0661

Methodology, Sources and Data Quality

The Public Institutions Division is currently writing a new summary of the methodology and concepts relevant to each of its data programs as well as the data quality in each program. The summary will be forwarded to you on completion. In the interim please contact Tom Caplan, Chief, Data Dissemination and External Relations, 613-951-0885 should you have any queries on these areas.

PUBLIC INSTITUTIONS DIVISION
OFF-THE-SHELF PRODUCTS

**FEDERAL GOVERNMENT FINANCE DATA - FINANCIAL
MANAGEMENT SYSTEM BASIS**

a)	Federal Government Revenue	(latest three years)	\$10.00
b)	Federal Government Expenditure	(latest three years)	\$10.00
c)	Detailed Federal Government Expenditure	(latest three years)	\$15.00
d)	Historical Federal Government Revenue	(1974/75 to 1990/91)	\$25.00
e)	Historical Federal Government Expenditure	(1974/75 to 1990/91)	\$25.00

**PROVINCIAL/TERRITORIAL GOVERNMENT FINANCE DATA -
FINANCIAL MANAGEMENT SYSTEM BASIS**

a)	Provincial/Territorial Government Revenue or Expenditure (per province/territory, latest two years)	\$10.00
b)	Provincial/Territorial Government Revenue or Expenditure (all provinces/territories, latest two years)	\$50.00
c)	Provincial/Territorial Government Revenue and Expenditure (all provinces/territories, latest two years)	\$75.00
d)	Historical Provincial/Territorial Government Revenue or Expenditure (per province/territory, 1974/75 to 1990/91)	\$25.00
e)	Historical Provincial/Territorial Government Revenue or Expenditure (all provinces/territories, 1974/75 to 1990/91)	\$80.00
f)	Historical Provincial/Territorial Government Revenue and Expenditure (all provinces/territories, 1974/75 to 1990/91)	\$125.00

**LOCAL GOVERNMENT FINANCE DATA - FINANCIAL
MANAGEMENT SYSTEM BASIS**

a)	Local Government Gross Revenue or Expenditure (per province/territory - latest 5 years)	\$15.00
b)	Local Government Gross Revenue or Expenditure (all provinces/territories - latest 5 years)	\$25.00
c)	Local Government Gross Revenue and Expenditure (all provinces/territories - latest 5 years)	\$50.00
d)	Local Government Current/Capital Revenue or Expenditure (per province/territory - latest 5 years)	\$15.00
e)	Local Government Current/Capital Revenue or Expenditure (all provinces/territories - latest 5 years)	\$25.00
f)	Local Government Current/Capital Revenue and Expenditure (all provinces/territories - latest 5 years)	\$50.00
g)	Historical Local Government Revenue or Expenditure (per province/territory)	\$25.00
h)	Historical Local Government Revenue or Expenditure (all provinces)	\$80.00
i)	Historical Local Government Revenue and Expenditure (all provinces/territories)	\$125.00

CONSOLIDATED GOVERNMENT FINANCE DATA

a)	Consolidated Federal-Provincial-Local Government Revenue or Expenditure (latest 5 years)	\$10.00
b)	Consolidated Federal-Provincial-Local Government Revenue and Expenditure (latest 5 years)	\$20.00
c)	Consolidated Provincial-Local Government Revenue or Expenditure (per province/territory, latest 5 years)	\$25.00
d)	Consolidated Provincial-Local Government Revenue and Expenditure (per province/territory, latest 5 years)	\$40.00
e)	Historical Consolidated Federal-Provincial-Local Government Revenue or Expenditure (1975/76 to 1990/91)	\$15.00
f)	Historical Consolidated Federal-Provincial-Local Government Revenue and Expenditure (1975/76 to 1990/91)	\$25.00
g)	Historical Consolidated Provincial-Local Government Revenue or Expenditure (per province/territory, 1975/76 to 1990/91)	\$15.00
h)	Historical Consolidated Provincial-Local Government Revenue or Expenditure (all provinces/territories, 1975/76 to 1990/91)	\$50.00
i)	Historical Consolidated Provincial-Local Government Revenue and Expenditure (per province/territory, 1975/76 to 1990/91)	\$25.00
j)	Historical Consolidated Provincial-Local Government Revenue and Expenditure (all provinces/territories, 1975/76 to 1990/91)	\$75.00

FEDERAL GOVERNMENT EMPLOYMENT DATA

- a) Public Sector - Federal - Employment and Remuneration Pay
by Province and by Component (latest 3 years) **\$15.00**

PROVINCIAL/TERRITORIAL GOVERNMENT EMPLOYMENT DATA

- a) Provincial & Territorial Government Employment -
Employment and Total Remuneration by Province/Territory
(latest 3 years) **\$15.00**

LOCAL EMPLOYMENT DATA

- a) Local Government Employment -
Employment & Remuneration by Province/Territory
(latest 3 years) **\$15.00**

FEDERAL GOVERNMENT BUSINESS ENTERPRISES

a)	Assets, Liabilities and Net Worth, by Industry (latest year)	\$10.00
b)	Income and Expense by Industry (latest year)	\$10.00
c)	Number of Employees and Remuneration by Province/Territory	\$15.00

PROVINCIAL AND TERRITORIAL GOVERNMENT BUSINESS ENTERPRISES

a)	Assets, Liabilities & Net Worth, by Province (latest year)	TBA
b)	Assets, Liabilities & Net Worth, by Industry, Canada Total (latest year)	TBA
c)	Current Income & Expenses, by Province (latest year)	TBA
d)	Current Income & Expenses, by Industry, Canada Total (latest year)	TBA
e)	Number of Employees and Remuneration by Province\Territory	\$15.00

TBA - To Be Available Shortly.

GOVERNMENT REVENUES AND SALES
BY VALUE AND VOLUME OF
ALCOHOLIC BEVERAGES IN CANADA

Table 1:	Net Income of Provincial and Territorial Liquor Authorities and Provincial and Territorial Government Revenue from the Control and Sale of Alcoholic Beverages - Fiscal Year Ending March 31, 1989	\$10.00
Table 2:	Reconciliation of Income of Liquor Authorities with Total Revenue Specifically Derived from the Control and Sale of Alcoholic Beverages - Fiscal Year Ending March 31, 1989	\$10.00
Table 3:	Provincial and Territorial Revenue Derived From the Control and Sale of Alcoholic Beverages Years Ended March 31, 1980 to 1989	\$10.00
Table 4:	Sales of Alcoholic Beverages by Value - Sale of Alcoholic Beverages - Fiscal Year Ending March 31, 1989	\$10.00
Table 5:	Sales of Alcoholic Beverages by Volume - Fiscal Year Ending March 31, 1989	\$10.00
Table 6:	Sales of Alcoholic Beverages by Value and Per Capita 15 Years and Over - Years Ended March 31 1985-1989	\$10.00
Table 7:	Sales of Alcoholic Beverages by Volume and Per Capita 15 Years and Over - Years Ended March 31 1985-1989	\$10.00
Table 8:	Imports and Exports of Alcoholic Beverages - Fiscal Years Ending March 31, 1985 to 1989	\$10.00

Complete Set - \$50.00 (all eight tables)

PUBLIC SECTOR DATA

- | | | |
|----|--|----------------|
| a) | The Public Sector Universe of Canada (1990, descriptive, 9 pages) | \$10.00 |
| b) | Federal and Provincial Government Business Enterprises
(1990, listing, 36 pages) | \$25.00 |
| c) | Federal and Provincial Government Departments
(1990/91, listing, 25 pages, bilingual) | \$25.00 |
| d) | Federal and Provincial Government Special Funds
(1990/91, 25 pages, bilingual) | \$25.00 |
| e) | List of Public Hospitals by Province, (1989, 34 pages) | \$25.00 |

Complete Set - \$75.00 (all five tables)

SOCIAL SECURITY DATA

CHILDREN & FAMILIES

- a) Family Allowances, Number of Children Receiving (1980/81 to 1989/90)
- b) Family Allowances, Number of Families Receiving (1980/81 to 1989/90)
- c) Family Allowances, Total Net Payments (1980/81 to 1989/90)
- d) Child Tax Credit, Number of Families Receiving (1980/81 to 1989/90)
- e) Child Tax Credit, Total Amount Paid & Average Per Family (1980/81 to 1989/90)

OLDER POPULATION

- a) New Horizons, Number of Directors of Approved Projects (1981/82 to 1986/87)
- b) New Horizons, Number of Projects Approved and Value of Grants (1981/82 to 1986/87)
- c) Old Age Security, Number of Recipients, by Type of Benefit (1981/82 to 1988/89)
- d) Old Age Security, Total Net Payments (1981/82 to 1988/89)

POPULATION IN NEED

- a) Canada Assistance Plan, Total Federal Payments to Provinces (1981/82 to 1987/88)
- b) National Welfare Grant Total Contributions, Number of Projects, Average Amount of Contribution (1981/82 to 1987/88)

Please Note:

These statistical tables will be available shortly but currently are produced on a special request basis.

WORKING AGE POPULATION

- a) Civilian War Disability and Dependent Pensions, Number (1981/82 to 1987/88)
- b) Civilian War Disability and Dependent Pensions, Total Net Payments (1981/82 to 1987/88)
- c) Civilian War Allowances, Number (1981/82 to 1987/88)
- d) Veterans Disability and Dependent Pensions, Total Net Payments (1981/82 to 1987/88)
- e) War Veterans Allowances, Number, (1981/82 to 1987/88)
- f) Veterans Disability Pensions, Number in Force (1981/82 to 1987/88)
- g) Veterans Dependent Pensions, Number in Force (1981/82 to 1987/88)
- h) War Veterans and Civilian Wars Allowances, Net Payments (1981/82 to 1987/88)
- i) Canada Assistance Plan, Number of Persons Assisted (1981/82 to 1987/88)
- j) Unemployment Insurance (U.I.) Number of Beneficiaries, by Sex (1981/82 to 1987/88)
- k) U.I. Benefit Payments, by Province (1981/82 to 1987/88)
- l) U.I. Benefit Payments, by Type, by Province (1981/82 to 1987/88)
- m) Canadian Pension Plan (CPP) and Quebec Pension Plan (QPP), Number of Contributors, by Sex (1981/82 to 1989/90)
- n) CPP and QPP, Number of Beneficiaries (1981/82 to 1989/1990)
- o) CPP and QPP, Total Amount of Benefit Paid (1981/82 to 1989/90)
- p) CPP and QPP, Balance of Funds Invested (1981/82 to 1989/90)
- q) CPP and QPP, Funds Invested and Balances at end of fiscal year (1981/82 to 1989/90)
- r) CPP and QPP, Statements of Accounts (1981/82 to 1989/90)

Please Note:

These products are to be available shortly but currently are produced on a special request basis.



1010077397

DISCOUNTS AVAILABLE

1/ Data Package Discount:

- (a) Per Province/Year price
- (b) Complete Set discount price

2/ Quantity Discount:

<u>Number of Products Requested</u>	<u>Discount on Total Cost</u>
two	10%
three	15%
four	20%
five	25%
six or more	30%

3/ Educational Institutions and Non-Profit Organizations Discount:

- (a) 25% Standard discount on all products