

Catalogue no. 71-001-X

Labour Force Information

Friday, January 6, 2017

December 4 to 10, 2016



Statistics
Canada

Statistique
Canada

Canada

How to obtain more information

For information about this product or the wide range of services and data available from Statistics Canada, visit our website, www.statcan.gc.ca.

You can also contact us by

e-mail at STATCAN.infostats-infostats.STATCAN@canada.ca

telephone, from Monday to Friday, 8:30 a.m. to 4:30 p.m., at the following numbers:

- | | |
|---|----------------|
| • Statistical Information Service | 1-800-263-1136 |
| • National telecommunications device for the hearing impaired | 1-800-363-7629 |
| • Fax line | 1-514-283-9350 |

Depository Services Program

- | | |
|------------------|----------------|
| • Inquiries line | 1-800-635-7943 |
| • Fax line | 1-800-565-7757 |

To access this product

This product, Catalogue no. 71-001-X, is available free in electronic format. To obtain a single issue, visit our website, www.statcan.gc.ca and browse by "Key resource" > "Publications."

Standards of service to the public

Statistics Canada is committed to serving its clients in a prompt, reliable and courteous manner. To this end, this agency has developed standards of service that its employees observe. To obtain a copy of these service standards, please contact Statistics Canada toll-free at 1-800-263-1136. The service standards are also published at www.statcan.gc.ca under "Contact us" > "Standards of service to the public."

Statistics Canada
Labour Statistics Division
Labour Force Survey Program

Labour Force Information

Friday, January 6, 2017

December 4 to 10, 2016

Published by authority of the Minister responsible for Statistics Canada

© Minister of Industry, 2017

All rights reserved. Use of this publication is governed by the Statistics Canada
Open License Agreement.

<http://www.statcan.gc.ca/reference/licence-eng.html>

January 2017

Catalogue no. 71-001-X

ISSN 1492-5478

Frequency: Monthly

Ottawa

Cette publication est également disponible en français.

Note of appreciation

Canada owes the success of its statistical system to a long-standing partnership between Statistics Canada, the citizens of Canada, its businesses, governments and other institutions. Accurate and timely statistical information could not be produced without their continued cooperation and goodwill.

User information

Symbols

The following standard symbols are used in Statistics Canada publications:

- . not available for any reference period
- .. not available for a specific reference period
- ... not applicable
- 0 true zero or a value rounded to zero
- 0^s value rounded to 0 (zero) where there is a meaningful distinction between true zero and the value that was rounded
- p preliminary
- r revised
- x suppressed to meet the confidentiality requirements of the *Statistics Act*
- E use with caution
- F too unreliable to be published
- * significantly different from reference category ($p < 0.05$)

Special requests (\$)

Custom tabulations can be arranged on an ad hoc or regular basis. This service enables you to specify tables and time series to meet your own requirements. The cost varies according to the request. For more information, contact us toll-free at 1-866-873-8788 or e-mail us at statcan.labour-travail.statcan@canada.ca.

Schedule of LFS releases

Release date	Reference period
February 5, 2016	January 10 to 16, 2016
March 11, 2016	February 14 to 20, 2016
April 8, 2016	March 13 to 19, 2016
May 6, 2016	April 10 to 16, 2016
June 10, 2016	May 15 to 21, 2016
July 8, 2016	June 12 to 18, 2016
August 5, 2016	July 10 to 16, 2016
September 9, 2016	August 14 to 20, 2016
October 7, 2016	September 11 to 17, 2016
November 4, 2016	October 9 to 15, 2016
December 2, 2016	November 6 to 12, 2016
January 6, 2017	December 4 to 10, 2016

Table of contents

Highlights	5
Analysis — December 2016	6
Charts	
1. Employment indexes, Canada, seasonally adjusted	11
2. Unemployment, employment, and participation rates, Canada, seasonally adjusted	12
3. Employment indexes by industry, Canada, seasonally adjusted	13
4. Employment indexes by industry, Canada, seasonally adjusted	14
5. Employment indexes by industry, Canada, seasonally adjusted	15
6. Employment indexes by province, Canada, seasonally adjusted	16
7. Employment indexes by province, Canada, seasonally adjusted	17
8. Employment in British Columbia	18
Related products	19
Statistical tables	
1 Labour force characteristics by age and sex, Canada, seasonally adjusted	30
2 Employment by class of worker and industry, Canada, seasonally adjusted	32
3 Labour force characteristics by province, seasonally adjusted	33
4 Selected labour force characteristics (seasonally adjusted)	35
4-1 Newfoundland and Labrador	35
4-2 Prince Edward Island	36
4-3 Nova Scotia	37
4-4 New Brunswick	38
4-5 Quebec	39
4-6 Ontario	40
4-7 Manitoba	41
4-8 Saskatchewan	42
4-9 Alberta	43
4-10 British Columbia	44
5 Labour force characteristics by census metropolitan area (seasonally adjusted)	45
5-1 3 month moving average	45
5-2 Monthly	50

Table of contents – continued

6	Labour force characteristics	51
6-1	by province and economic region, unadjusted for seasonality, 3 month moving average ending in December 2015 and December 2016	51
6-2	by territory (seasonally adjusted) - 3 month moving average	56
7	Average usual hours and wages of employees by selected characteristics, Canada, unadjusted for seasonality	57
8	Regional unemployment rates used by the Employment Insurance program, seasonally adjusted, 3-month moving average	58

Data quality, concepts and methodology

Data quality	60
--------------	----

Highlights

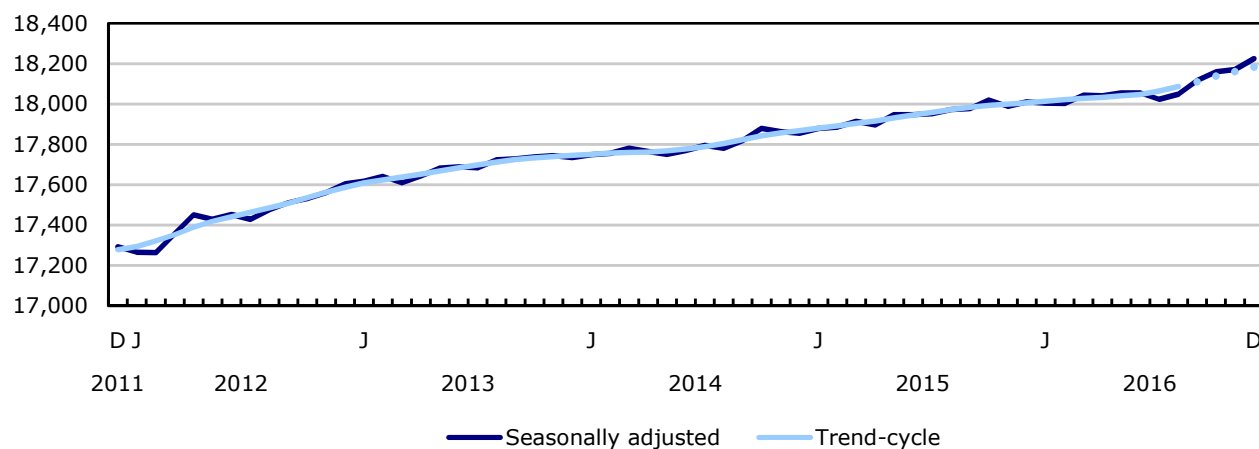
Employment rose by 54,000 (+0.3%) in December, the result of gains in full-time work. The unemployment rate increased 0.1 percentage points to 6.9%, as more people participated in the labour market.

Chart 1

Employment and unemployment rate, Canada, seasonally adjusted

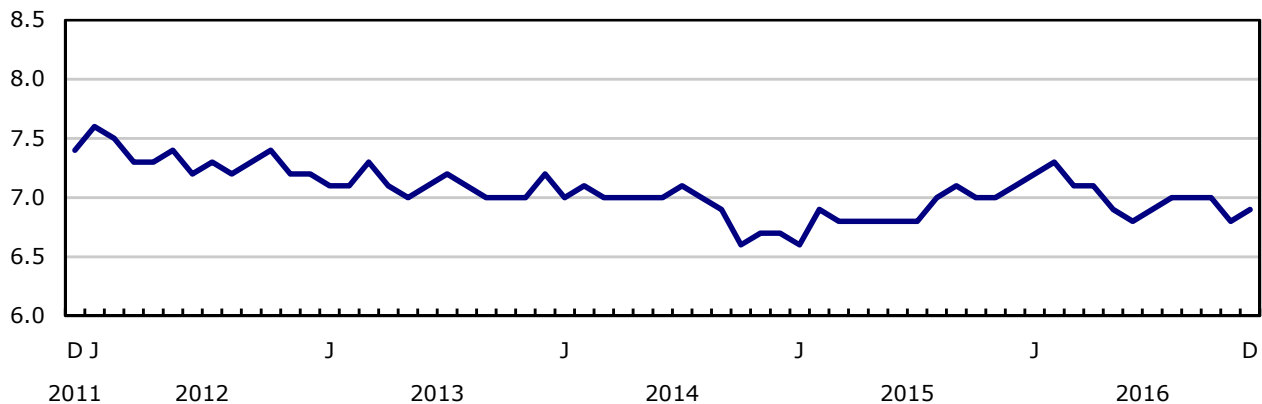
Employment

thousands



Unemployment rate

percent



Analysis — December 2016

Employment rose by 54,000 (+0.3%) in December, the result of gains in full-time work. The unemployment rate increased 0.1 percentage points to 6.9%, as more people participated in the labour market.

In the fourth quarter of 2016, employment increased by 108,000 (+0.6%), the largest increase since the second quarter of 2010. This followed a gain of 62,000 (+0.3%) in the third quarter.

In the 12 months to December 2016, employment gains totalled 214,000 or 1.2%, compared with a growth rate of 0.9% observed over the same period one year earlier. A year-end review is presented in a separate section below.

In December, employment increased among women aged 25 to 54. There was little overall employment change among the other demographic groups.

Quebec and British Columbia recorded increases in employment, while there was little change in the other provinces.

More people were employed in professional, scientific and technical services, and in health care and social assistance. At the same time, employment declined in agriculture.

The number of employees increased in both the public and private sectors in December, while self-employment was little changed.

Employment increases for women aged 25 to 54

In December, employment for women aged 25 to 54 rose by 31,000. As more women in this age group searched for work, their unemployment rate increased 0.2 percentage points to 5.4%.

Employment was little changed for men aged 25 to 54, and their unemployment rate was virtually unchanged at 6.2%.

Despite little employment change among people aged 55 and older, their unemployment rate increased 0.5 percentage points to 6.2% as more people in this age group searched for work.

Employment among youths aged 15 to 24 was little changed in December, and their unemployment rate was essentially unchanged at 12.6%.

Employment up in Quebec and British Columbia

Employment in Quebec rose by 20,000 in December, the result of increases in full-time work. As the number of people searching for work also increased, the unemployment rate rose 0.4 percentage points to 6.6%.

In British Columbia, there were 17,000 more people employed in December. The unemployment rate declined by 0.3 percentage points to 5.8%, the lowest rate among the provinces.

In December, employment was little changed in Ontario and the unemployment rate was 6.4%.

Industry perspective

In December, employment increased by 28,000 in professional, scientific and technical services and by 14,000 in health care and social assistance. In contrast, employment declined by 7,000 in agriculture.

The number of private sector employees rose by 44,000 and the number of public sector employees increased by 29,000 in December. At the same time, self-employment was little changed.

Quarterly update for the territories

The Labour Force Survey collects labour market data in the territories, which is produced in the form of three-month moving averages.

In Yukon, employment increased by 500 between the third and fourth quarters of 2016. The unemployment rate declined by 2.3 percentage points to 4.6% in the fourth quarter.

Employment in the Northwest Territories declined by 500 from the third quarter to the fourth quarter. At the same time, the unemployment rate was little changed at 6.8% as fewer people participated in the labour market.

In Nunavut, employment was little changed in the fourth quarter, and the unemployment rate was also little changed at 14.0%.

Year-end review, 2016

The following analysis focuses on changes from December 2015 to December 2016.

In 2016, employment gains totalled 214,000 or 1.2%, the fastest December-to-December growth since 2012. In comparison, employment grew by 155,000 (+0.9%) in 2015. Almost all of the increase in 2016 occurred from August to December.

Part-time employment trended up throughout 2016, rising by 154,000 or 4.5%, while full-time employment was little changed. During the same period, the number of hours worked was virtually unchanged.

In the 12 months to December, the unemployment rate declined by 0.2 percentage points to 6.9%. Over the same period, both the participation rate (65.8%) and the employment rate (61.3%) were little changed.

Fastest employment growth in British Columbia

In 2016, British Columbia recorded the fastest employment growth rate among the provinces for a second consecutive year, up 3.1% (+72,000). The gains were evenly split between full-time and part-time work, and spread across many industries. Employment in the province has been on an upward trend since the spring of 2015. However, the pace of growth has been slowing down since the summer of 2016. Compared with December 2015, the unemployment rate declined by 0.9 percentage points to 5.8%. British Columbia recorded the lowest provincial unemployment rate from June to December.

Employment in Quebec rose 2.2% (+90,000) in 2016, primarily in full-time work (+85,000) and driven by gains in the second half of the year. The unemployment rate has trended downward throughout the 12-month period, declining 1.3 percentage points to 6.6%.

In Ontario, employment increased 1.2% (+81,000) in 2016, mainly in part-time work (+74,000). The unemployment rate declined 0.3 percentage points to 6.4%.

In 2016, employment in Newfoundland and Labrador fell 2.4% (-5,700), all in full time. The unemployment rate was little changed at 14.9%, the result of fewer people participating in the labour market.

At year-end, employment in Saskatchewan was down by 1.2% (-6,900). All of the decline occurred in the first two months of 2016. In the 12 months to December, the unemployment rate in the province increased by 1.0 percentage point to 6.5%, continuing an upward trend that began in late 2014.

In Alberta, employment edged down (-0.8% or -19,000) in the 12 months to December. There were notable employment declines in manufacturing, natural resources and information, culture and recreation. At the same time, employment increased in the "other services" industry and public administration. In 2016, the number of people searching for work increased by 40,000, pushing the unemployment rate up 1.5 percentage points to 8.5%.

Service sector continues to lead employment growth

From December 2015 to December 2016, employment increased by 2.0% in the service sector, while it declined by 1.6% in the goods-producing sector.

In 2016, employment in information, culture and recreation rose by 6.5% (+49,000), following little change in 2015. Employment in this industry has been on an upward trend since the spring.

Employment in the "other services" industry grew 5.5% (+42,000) in 2016, driven by gains in the last three months of the year. Employment in this industry increased notably in Quebec and Alberta.

In public administration, employment increased by 3.9% (+36,000), with most of the growth in Quebec, Alberta and Saskatchewan.

There were more people employed in finance, insurance, real estate, rental and leasing (+3.5% or +39,000) in 2016. Employment in this industry has been on an upward trend throughout the year.

Year over year, employment also increased in accommodation and food services (+2.6% or +31,000), construction (+2.0% or +27,000), and wholesale and retail trade (+1.4% or +38,000).

On the other hand, employment in natural resources fell 8.3% (-29,000) in 2016, with most of the decline occurring in Alberta and Ontario. There were also decreases in Newfoundland and Labrador, as well as New Brunswick. At the national level, the largest declines were in oil and gas extraction.

In agriculture, employment was down by 4.7% (-14,000), mainly in Quebec.

The number of workers in manufacturing declined by 3.1% (-53,000), mostly in the first four months of the year. Employment in this industry decreased mainly in Alberta and British Columbia.

On a year-over-year basis, the number of public sector employees increased by 2.0% (+71,000), driven by gains in public administration, in information, culture and recreation, and in health care and social assistance. The number of private sector employees rose by 1.9% (+222,000), with increases across a number of industries in the service sector.

Self-employment decreased by 2.8% (-78,000) from December 2015 to December 2016. This decline was partly due to the fact that self-employment was at a high point in December 2015. The declines over this period were spread across a number of service sector industries.

Employment up among core-age and older people

In the 12 months to December, employment rose by 2.8% (+105,000) among people aged 55 and older. At the same time, their population increased by 3.0% (+310,000), continuing a long-term upward trend related to an aging population.

For women aged 55 and older, employment rose by 3.8% (+64,000) in 2016, while their population increased by 2.9% (+157,000). The participation rate for this group was essentially unchanged at 32.6% and their unemployment rate was 5.2%.

Among men aged 55 and older, employment grew by 2.0% (+41,000) in 2016, and the population increased by 3.1% (+154,000). Their unemployment rate increased 0.7 percentage points to 7.0% as more men in this age group searched for work. The participation rate for men aged 55 and older was virtually unchanged at 43.7%.

For people aged 25 to 54, employment rose 0.8% (+100,000) in 2016, while their population increased 0.2% (+35,000).

Employment increased by 1.3% (+72,000) among women aged 25 to 54, and their unemployment rate declined 0.3 percentage points to 5.4%. The participation rate for this group rose by 0.6 percentage points to 82.6%.

For men aged 25 to 54, employment edged up (+0.5% or +28,000) in the 12 months to December, and their unemployment rate declined 0.5 percentage points to 6.2%. Their participation rate declined by 0.4 percentage points to 90.9%.

In 2016, employment among youths aged 15 to 24 was virtually unchanged, while their population declined by 46,000 (-1.0%). As a result, their rate of employment increased 0.7 percentage points to 56.1%. The youth unemployment rate was little changed at 12.6%.

Note to readers

Upcoming revisions

A standard revision to the Labour Force Survey (LFS) data will be released on February 3. The LFS seasonally adjusted estimates available in CANSIM will be revised back to January 2014 using updated seasonal factors.

Beginning with the release of January data on February 10, occupation data will be based on the 2016 *National Occupational Classification* (NOC). Because NOC 2016 maintains the NOC 2011 structure of major, minor and unit groups, no historical revision of data is necessary.

The LFS estimates for December are for the week of December 4 to 10.

The LFS estimates are based on a sample and are therefore subject to sampling variability. As a result, monthly estimates will show more variability than trends observed over longer time periods. For more information, see "*Interpreting Monthly Changes in Employment from the Labour Force Survey*." Estimates for smaller geographic areas or industries also have more variability. For an explanation of the sampling variability of estimates and how to use standard errors to assess this variability, consult the "Data quality" section of the publication *Labour Force Information* (71-001-X).

This analysis focuses on differences between estimates that are statistically significant at the 68% confidence level.

The LFS estimates are the first in a series of labour market indicators released by Statistics Canada, which includes indicators from programs such as the Survey of Employment, Payrolls, Earnings and Hours (SEPH), Employment Insurance Statistics, and the Job Vacancy and Wage Survey. For more information on the conceptual differences between employment measures from the LFS and SEPH, refer to *section 8* of the *Guide to the Labour Force Survey* (71-543-G).

The **employment rate** is the number of employed people as a percentage of the population aged 15 and older. The rate for a particular group (for example, youths aged 15 to 24) is the number employed in that group as a percentage of the population for that group.

The **unemployment rate** is the number of unemployed as a percentage of the labour force (employed and unemployed).

The **participation rate** is the number of employed and unemployed as a percentage of the population.

Seasonal adjustment

Unless otherwise stated, this release presents seasonally adjusted estimates, which facilitate comparisons by removing the effects of seasonal variations. For more information on seasonal adjustment, see *Seasonally adjusted data – Frequently asked questions*.

Chart 1 shows trend-cycle data on employment. These data represent a smoothed version of the seasonally adjusted time series, which provides information on longer-term movements, including changes in direction underlying the series. These data are available in CANSIM table 282-0087 for the national level employment series. For more information, see the *StatCan Blog* and *Trend-cycle estimates – Frequently asked questions*.

New product

The technical paper *History of the Canadian Labour Force Survey, 1945 to 2016* is also now available. This document summarizes many of the major changes that have been made in the past 70 years to various components of the Labour Force Survey, including methodology, questionnaire, as well as collection and processing techniques.

Next release

The next release of the LFS will be on February 10.

Chart 1
Employment indexes, Canada, seasonally adjusted

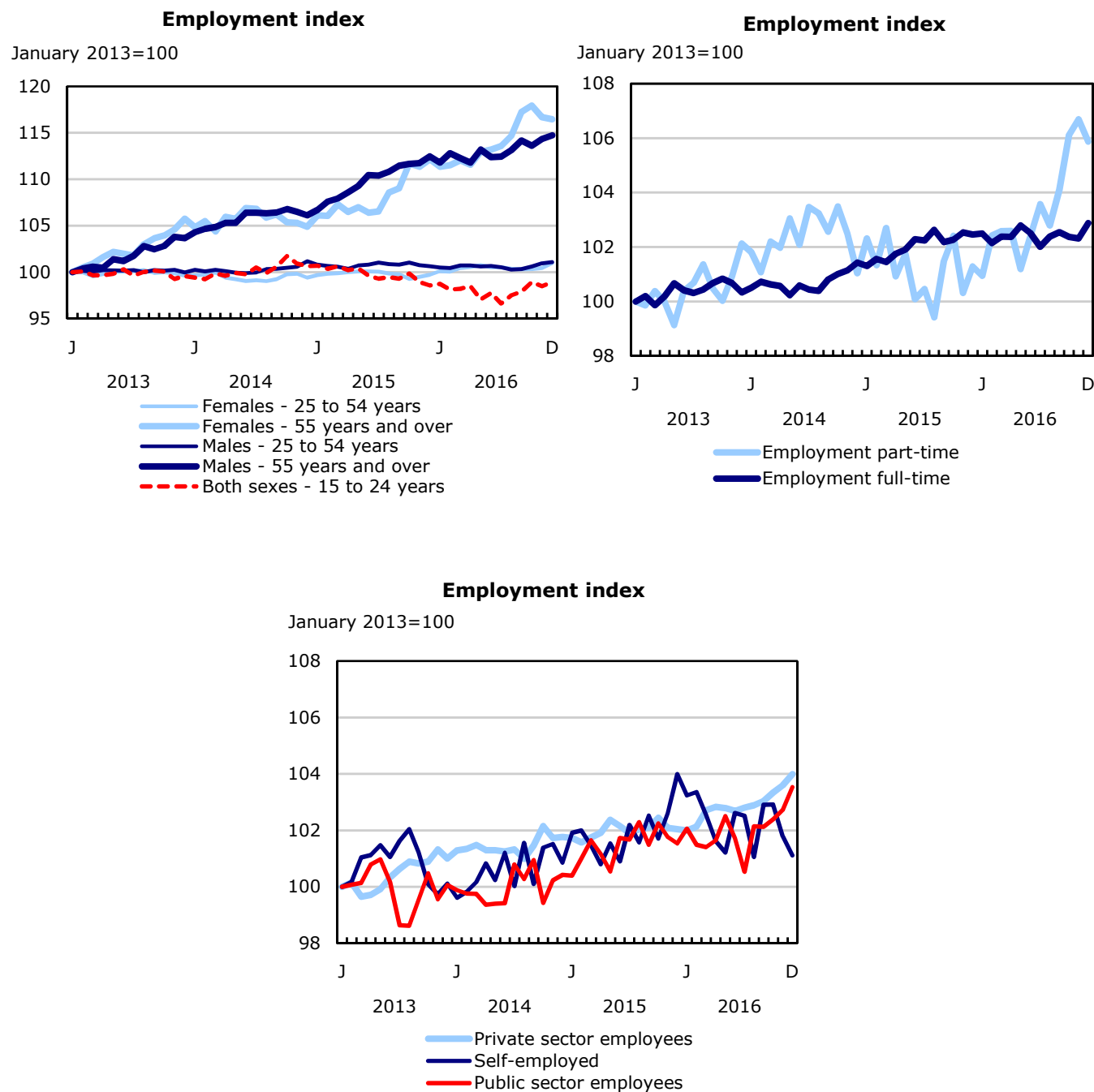


Chart 2
Unemployment, employment, and participation rates, Canada, seasonally adjusted

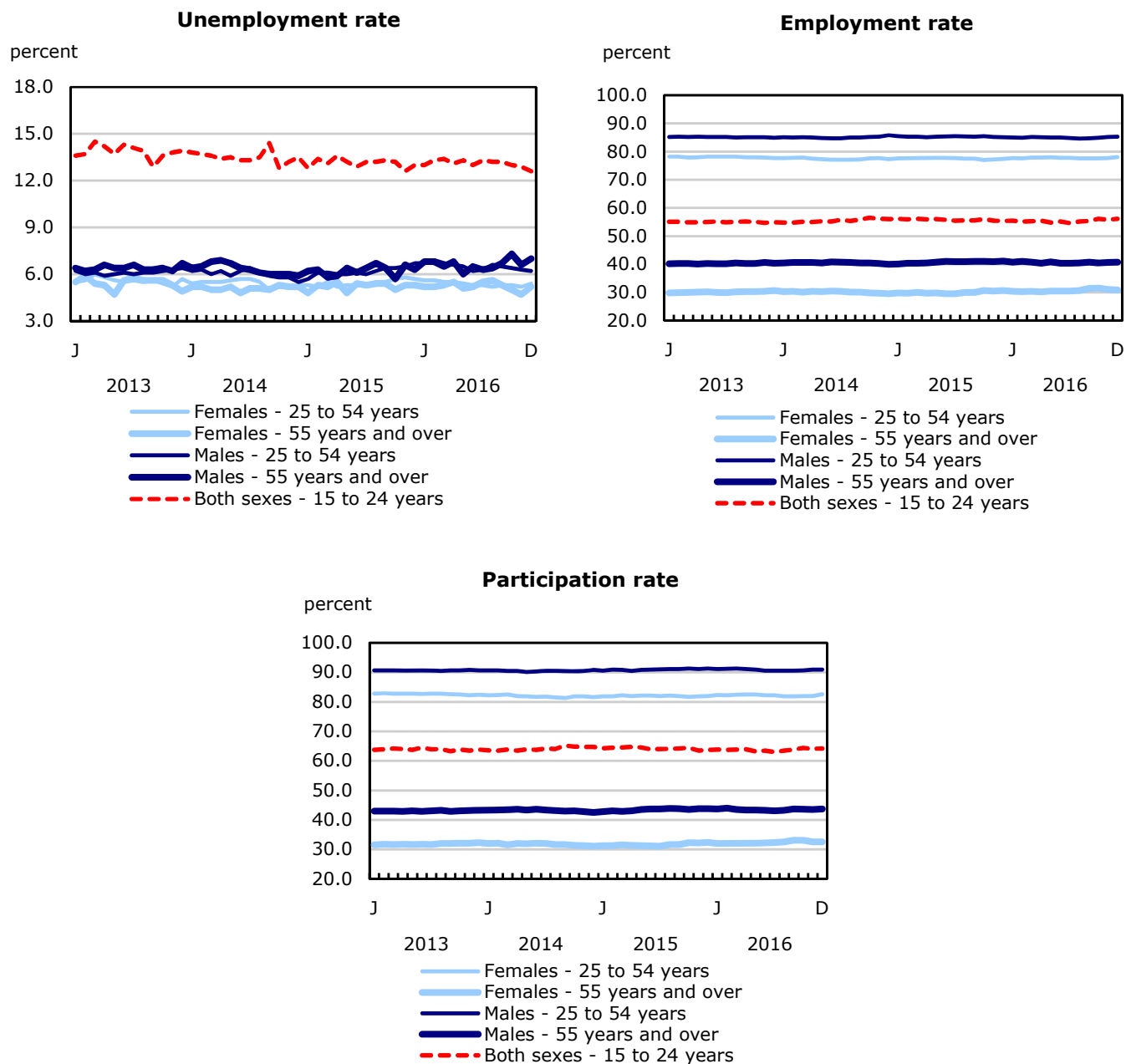


Chart 3
Employment indexes by industry, Canada, seasonally adjusted

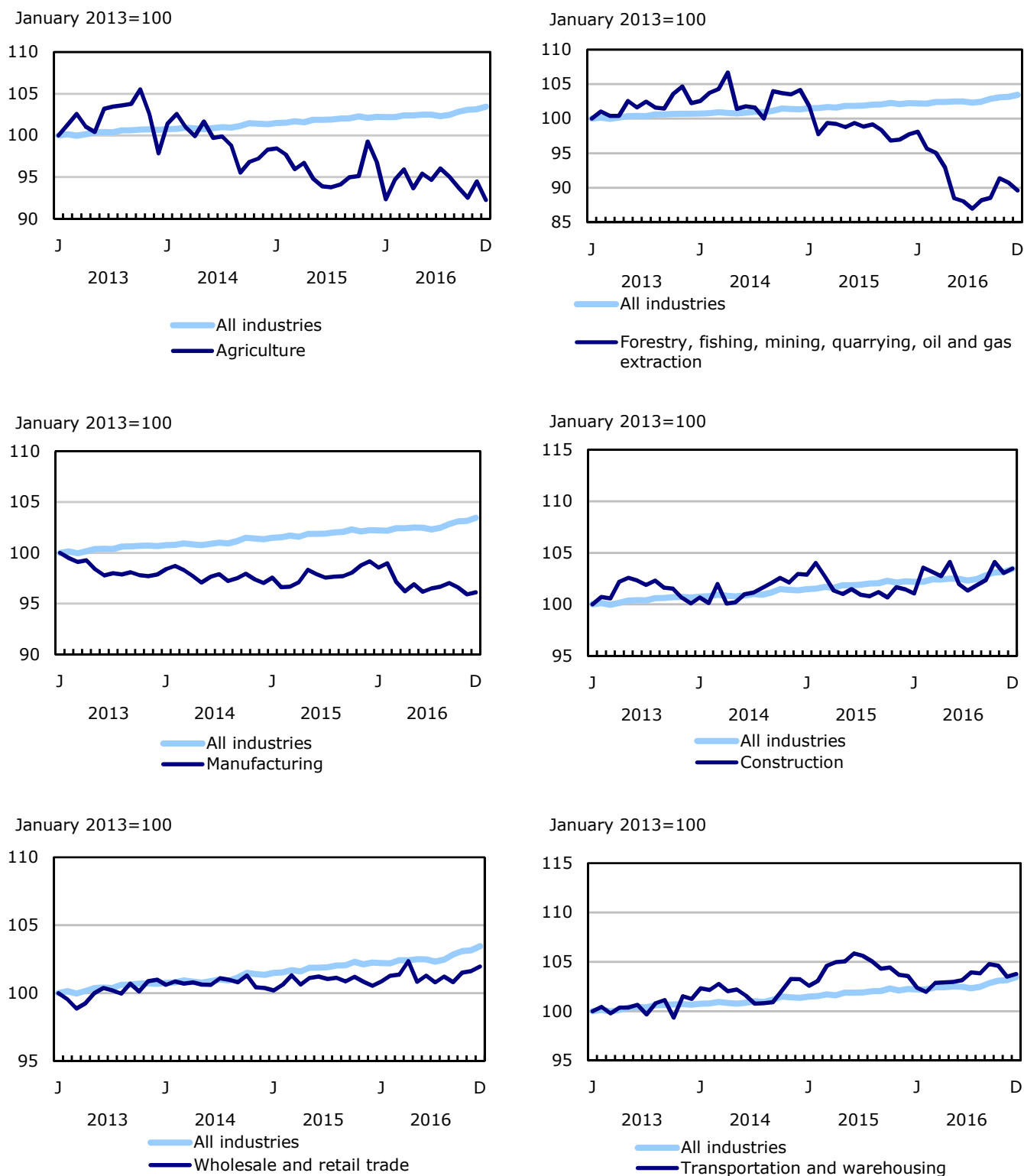


Chart 4
Employment indexes by industry, Canada, seasonally adjusted

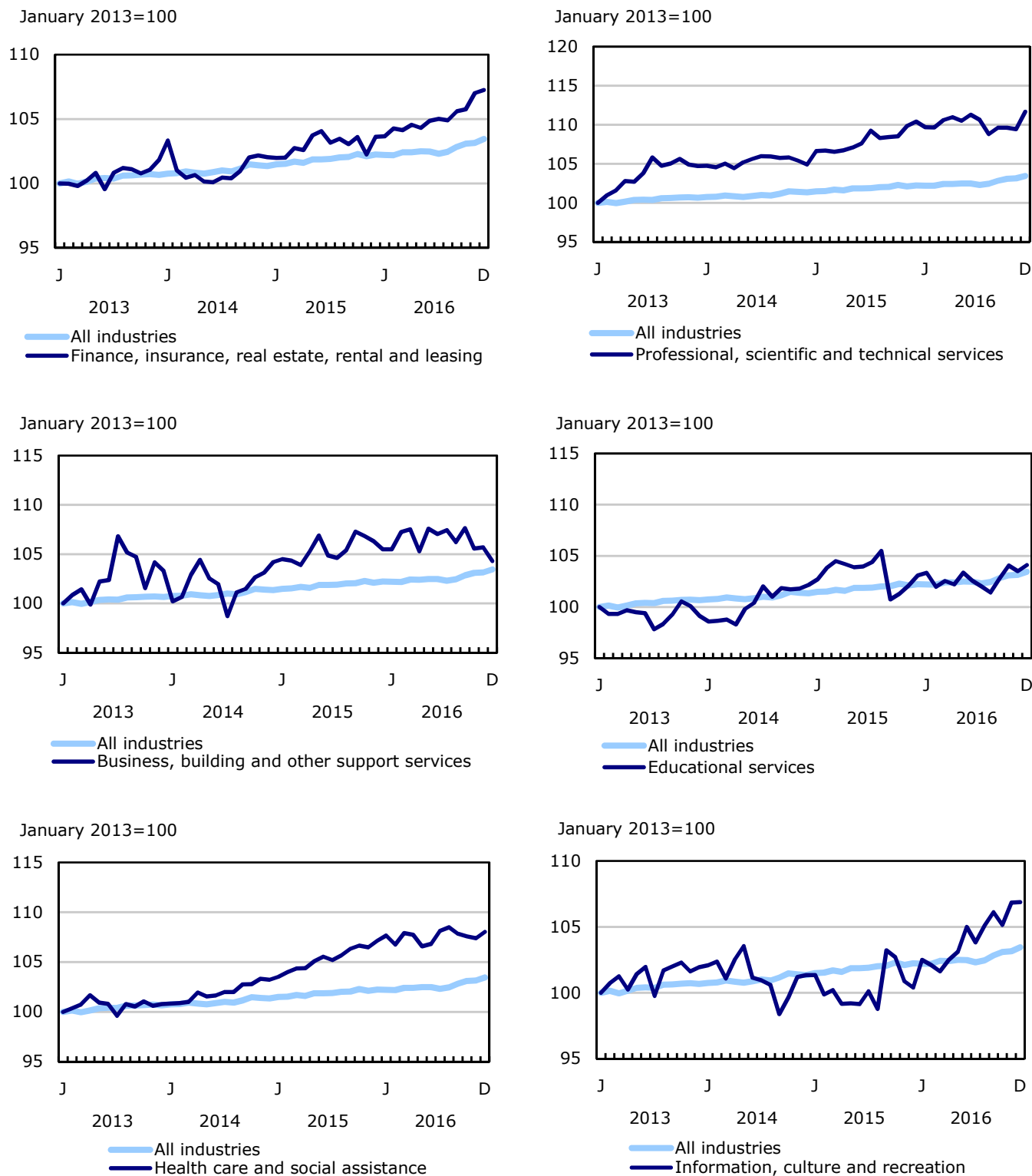


Chart 5
Employment indexes by industry, Canada, seasonally adjusted

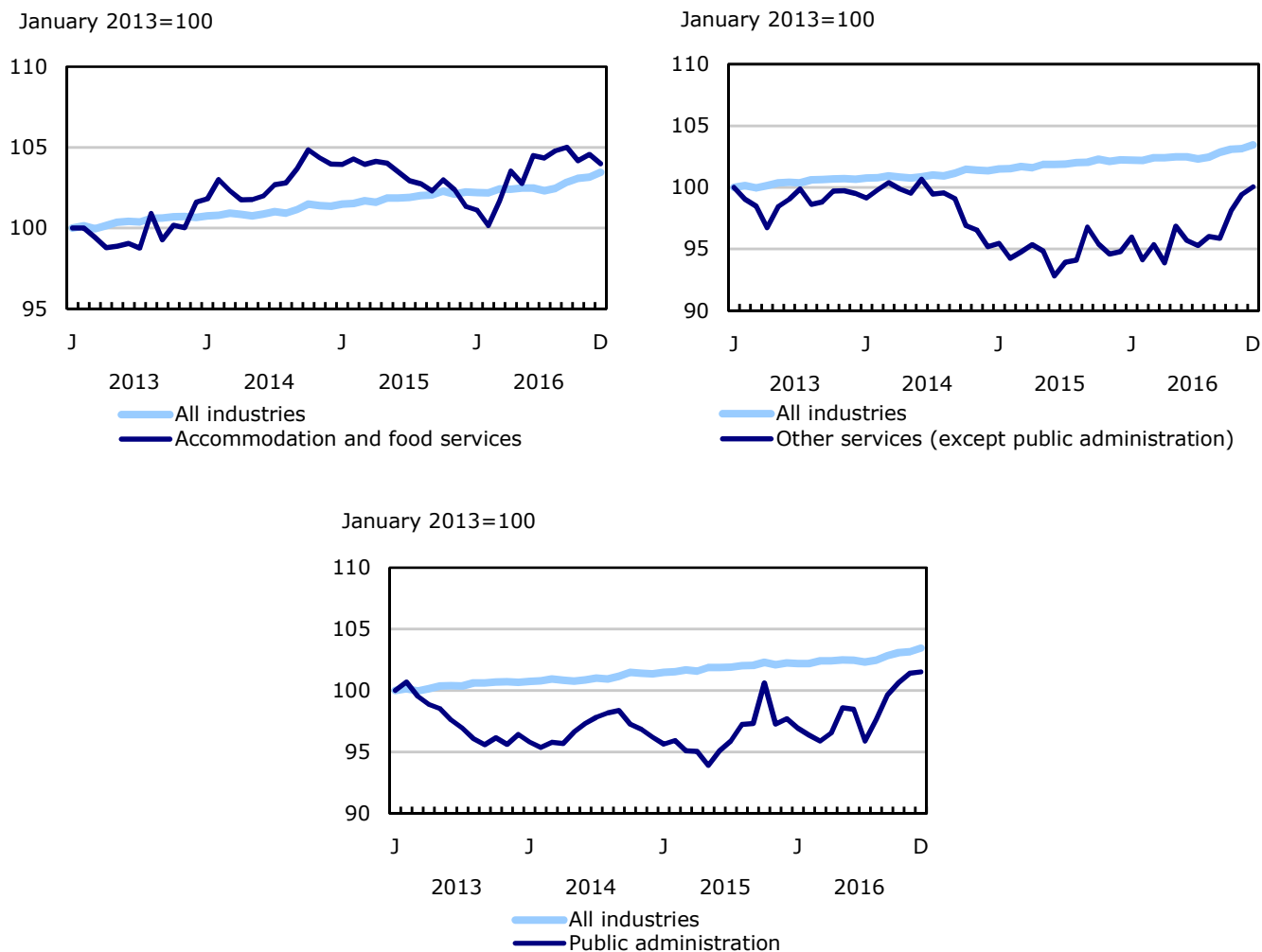


Chart 6
Employment indexes by province, Canada, seasonally adjusted

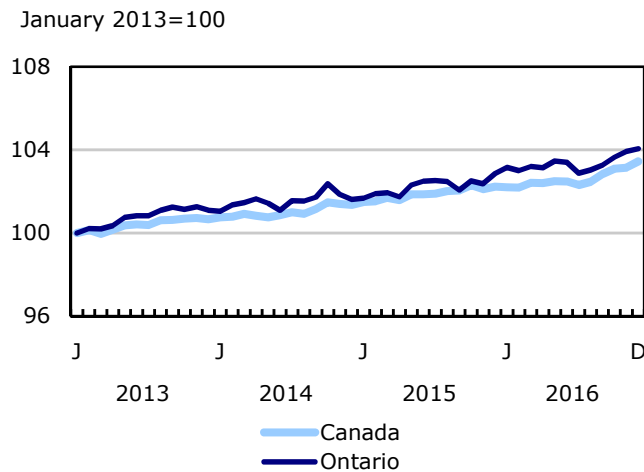
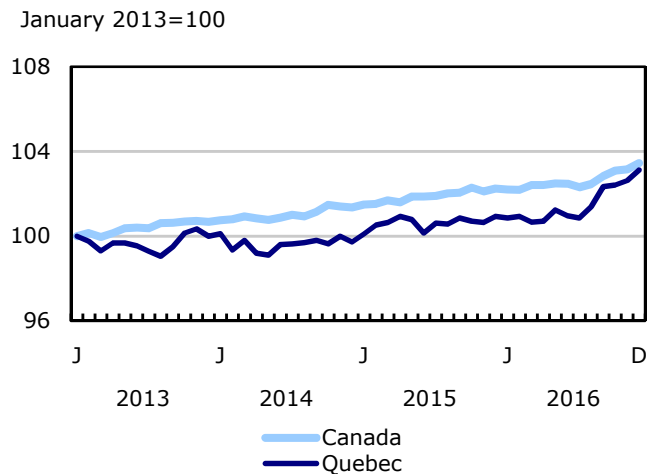
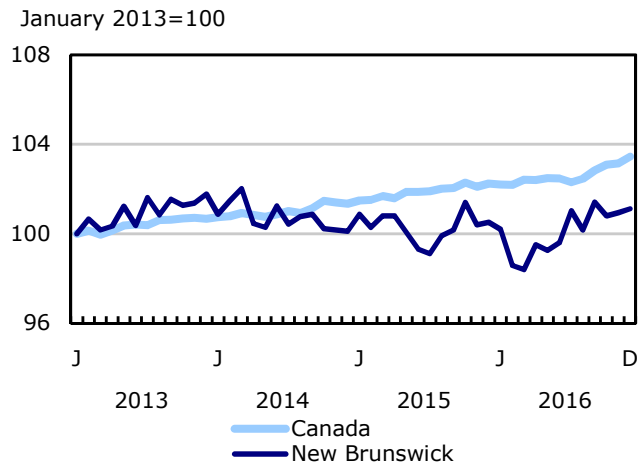
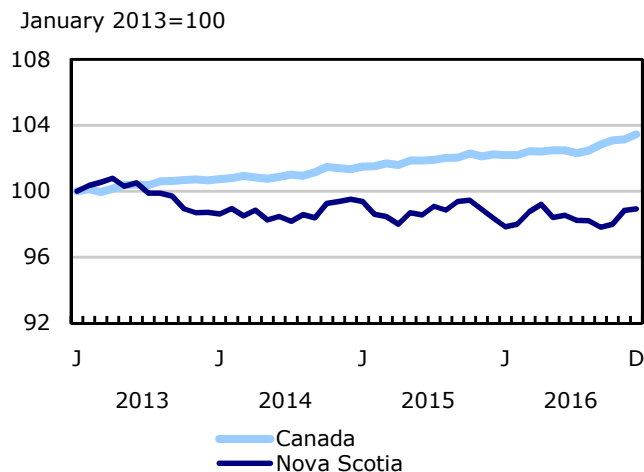
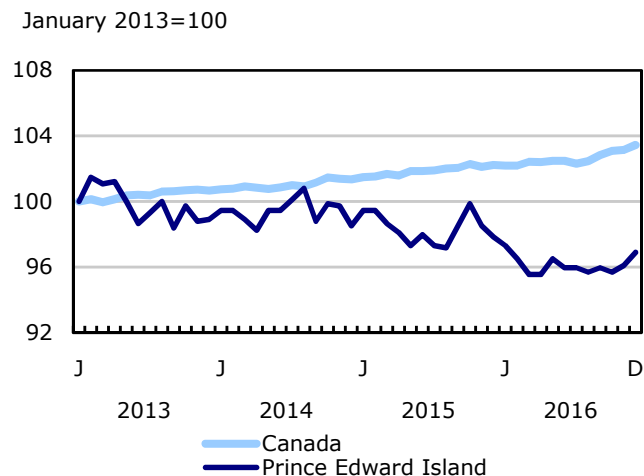
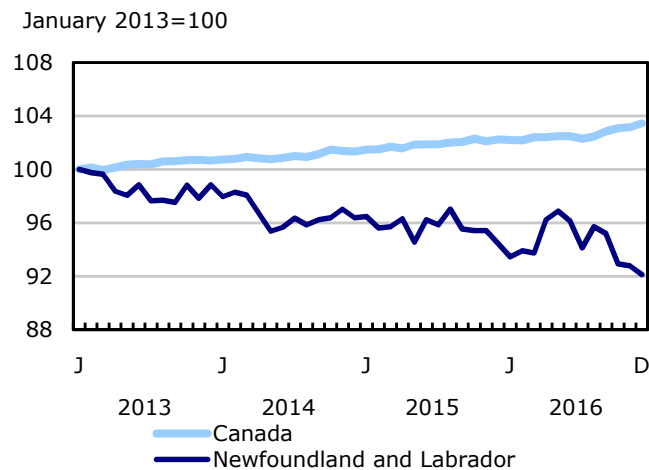


Chart 7
Employment indexes by province, Canada, seasonally adjusted

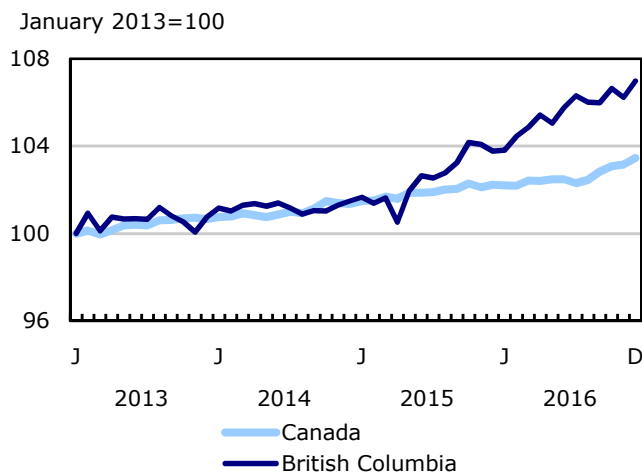
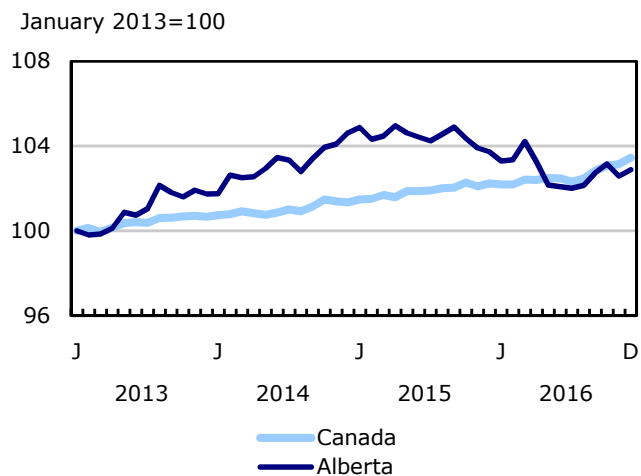
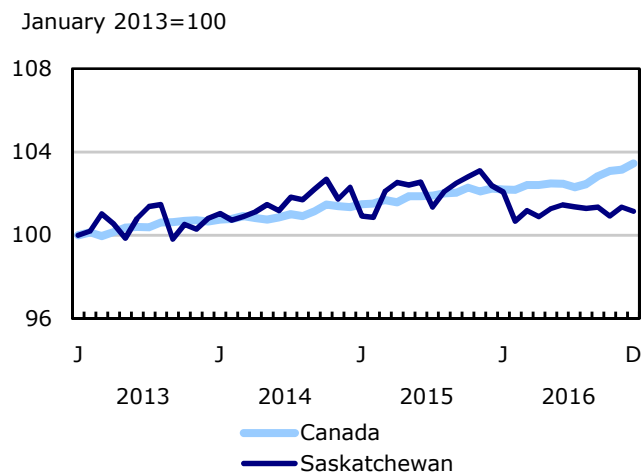
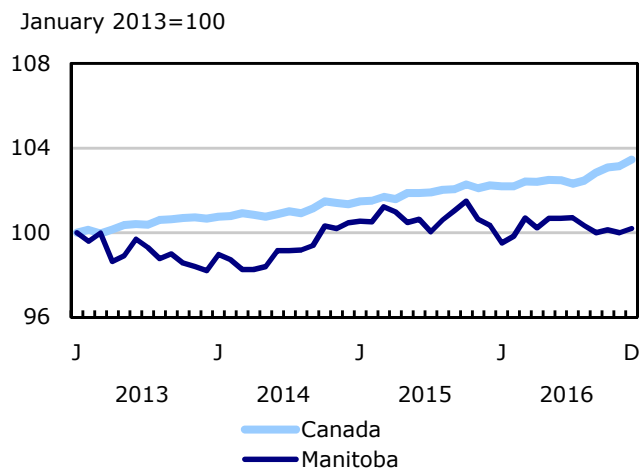
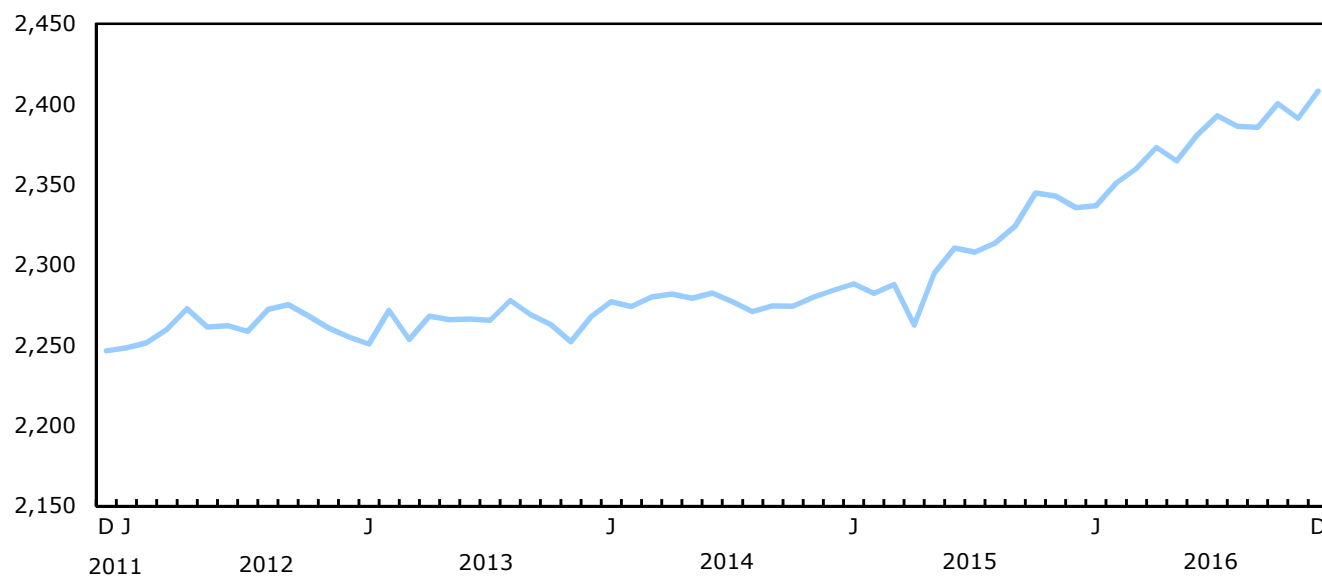


Chart 8
Employment in British Columbia

thousands



Source(s): CANSIM table 282-0087.

Related products

Selected publications from Statistics Canada

71-526-X	Methodology of the Canadian Labour Force Survey
71-543-G	Guide to the Labour Force Survey
71-587-X	Aboriginal Peoples Living Off-reserve in Western Canada: Estimates from the Labour Force Survey
71-588-X	The Aboriginal Labour Force Analysis Series
71-606-X	The Immigrant Labour Force Analysis Series
71F0031X	Improvements to the Labour Force Survey (LFS)
71M0001X	Labour Force Survey Microdata File

Selected CANSIM tables from Statistics Canada

279-0029	Work absence statistics of full-time employees by province, census metropolitan area (CMA) and sex, annual
279-0030	Work absence statistics of full-time employees by sex and North American Industry Classification System (NAICS), annual
279-0032	Work absence statistics of full-time employees by sex and age group, annual
279-0033	Work absence statistics of full-time employees by sex and presence of children, annual
279-0034	Work absence statistics of full-time employees by sex and job tenure, annual
279-0035	Work absence statistics of full-time employees by sex and public and private sector, annual
279-0036	Work absence statistics of full-time employees by sex and educational attainment, annual
279-0037	Work absence statistics of full-time employees by sex and workplace size, annual
279-0038	Work absence statistics of full-time employees by sex and job status, annual
279-0039	Work absence statistics of full-time employees by sex and union coverage, annual
279-0040	Work absence statistics of full-time employees by sex and National Occupational Classification (NOC), annual
282-0001	Labour force survey estimates (LFS), by sex and detailed age group, unadjusted for seasonality, monthly

282-0002	Labour force survey estimates (LFS), by sex and detailed age group, annual
282-0003	Labour force survey estimates (LFS), by educational attainment, sex and age group, unadjusted for seasonality, monthly
282-0004	Labour force survey estimates (LFS), by educational attainment, sex and age group, annual
282-0005	Labour force survey estimates (LFS), by full- and part-time students during school months, sex and age group, unadjusted for seasonality, monthly
282-0006	Labour force survey estimates (LFS), by students during summer months, sex and age group, unadjusted for seasonality, monthly
282-0007	Labour force survey estimates (LFS), by North American Industry Classification System (NAICS), sex and age group, unadjusted for seasonality, monthly
282-0008	Labour force survey estimates (LFS), by North American Industry Classification System (NAICS), sex and age group, annual
282-0011	Labour force survey estimates (LFS), employment by class of worker, North American Industry Classification System (NAICS) and sex, unadjusted for seasonality, monthly
282-0012	Labour force survey estimates (LFS), employment by class of worker, North American Industry Classification System (NAICS) and sex, annual
282-0013	Labour force survey estimates (LFS), part-time employment by reason for part-time work, sex and age group, unadjusted for seasonality, monthly
282-0014	Labour force survey estimates (LFS), part-time employment by reason for part-time work, sex and age group, annual
282-0015	Labour force survey estimates (LFS), by usual hours worked, main or all jobs, sex and age group, unadjusted for seasonality, monthly
282-0016	Labour force survey estimates (LFS), by usual hours worked, main or all jobs, sex and age group, annual
282-0017	Labour force survey estimates (LFS), by actual hours worked, main or all jobs, sex and age group, unadjusted for seasonality, monthly
282-0018	Labour force survey estimates (LFS), by actual hours worked, main or all jobs, sex and age group, annual
282-0019	Labour force survey estimates (LFS), by usual hours worked, class of worker, North American Industry Classification System (NAICS) and sex, unadjusted for seasonality, monthly
282-0020	Labour force survey estimates (LFS), by usual hours worked, class of worker, North American Industry Classification System (NAICS) and sex, annual
282-0021	Labour force survey estimates (LFS), by actual hours worked, class of worker, North American Industry Classification System (NAICS) and sex, unadjusted for seasonality, monthly
282-0022	Labour force survey estimates (LFS), by actual hours worked, class of worker, North American Industry Classification System (NAICS) and sex, annual

282-0027	Labour force survey estimates (LFS), by total and average usual and actual hours worked, main or all jobs, type of work, sex and age group, unadjusted for seasonality, monthly
282-0028	Labour force survey estimates (LFS), by total and average usual and actual hours worked, main or all jobs, type of work, sex and age group, annual
282-0031	Labour force survey estimates (LFS), multiple jobholders by North American Industry Classification System (NAICS), sex and age group, annual
282-0032	Labour force survey estimates (LFS), multiple jobholders by North American Industry Classification System (NAICS), sex and age group, unadjusted for seasonality, monthly
282-0035	Labour force survey estimates (LFS), multiple jobholders by usual hours worked at main and all jobs, unadjusted for seasonality, monthly
282-0036	Labour force survey estimates (LFS), multiple jobholders by usual hours worked at main and all jobs, annual
282-0037	Labour force survey estimates (LFS), job tenure by type of work, sex and age group, unadjusted for seasonality, monthly
282-0038	Labour force survey estimates (LFS), job tenure by type of work, sex and age group, annual
282-0041	Labour force survey estimates (LFS), job tenure by North American Industry Classification System (NAICS) and sex, unadjusted for seasonality, monthly
282-0042	Labour force survey estimates (LFS), job tenure by North American Industry Classification System (NAICS) and sex, annual
282-0047	Labour force survey estimates (LFS), duration of unemployment by sex and age group, unadjusted for seasonality, monthly
282-0048	Labour force survey estimates (LFS), duration of unemployment by sex and age group, annual
282-0049	Labour force survey estimates (LFS), unemployment by type of work sought and search method, sex and age group, unadjusted for seasonality, monthly
282-0050	Labour force survey estimates (LFS), unemployment by type of work sought and search method, sex and age group, annual
282-0051	Labour force survey estimates (LFS), retirement age by class of worker and sex, annual
282-0071	Labour force survey estimates (LFS), wages of employees by type of work, North American Industry Classification System (NAICS), sex and age group, unadjusted for seasonality, monthly
282-0072	Labour force survey estimates (LFS), wages of employees by type of work, North American Industry Classification System (NAICS), sex and age group, annual
282-0073	Labour force survey estimates (LFS), wages of employees by job permanence, union coverage, sex and age group, unadjusted for seasonality, monthly
282-0074	Labour force survey estimates (LFS), wages of employees by job permanence, union coverage, sex and age group, annual
282-0075	Labour force survey estimates (LFS), employees by establishment size, North American Industry Classification System (NAICS), sex and age group, unadjusted for seasonality, monthly

282-0076	Labour force survey estimates (LFS), employees by establishment size, North American Industry Classification System (NAICS), sex and age group, annual
282-0077	Labour force survey estimates (LFS), employees by union coverage, North American Industry Classification System (NAICS), sex and age group, unadjusted for seasonality, monthly
282-0078	Labour force survey estimates (LFS), employees by union coverage, North American Industry Classification System (NAICS), sex and age group, annual
282-0079	Labour force survey estimates (LFS), employees by job permanency, North American Industry Classification System (NAICS), sex and age group, unadjusted for seasonality, monthly
282-0080	Labour force survey estimates (LFS), employees by job permanency, North American Industry Classification System (NAICS), sex and age group, annual
282-0083	Labour force survey estimates (LFS), employees working overtime (weekly) by North American Industry Classification System (NAICS), sex and age group, unadjusted for seasonality, monthly
282-0084	Labour force survey estimates (LFS), employees working overtime (weekly) by North American Industry Classification System (NAICS), sex and age group, annual
282-0085	Labour force survey estimates (LFS), supplementary unemployment rates by sex and age group, unadjusted for seasonality, monthly
282-0086	Labour force survey estimates (LFS), supplementary unemployment rates by sex and age group, annual
282-0087	Labour force survey estimates (LFS), by sex and age group, seasonally adjusted and unadjusted, monthly
282-0088	Labour force survey estimates (LFS), employment by North American Industry Classification System (NAICS), seasonally adjusted and unadjusted, monthly
282-0089	Labour force survey estimates (LFS), employment by class of worker and sex, seasonally adjusted and unadjusted, monthly
282-0092	Labour force survey estimates (LFS), actual hours worked at main job by North American Industry Classification System (NAICS), seasonally adjusted, monthly
282-0094	Labour force survey estimates (LFS), by North American Industry Classification System (NAICS), Canada, seasonally adjusted, monthly
282-0095	Labour force survey estimates (LFS), by full- and part-time students during school months, sex and age group, annual
282-0100	Labour force survey estimates (LFS), by territories, sex and age group, 3-month moving average, seasonally adjusted and unadjusted, monthly
282-0101	Labour force survey estimates (LFS), by immigrant status, age group, Canada, regions, provinces and Montreal, Toronto, Vancouver census metropolitan areas, 3-month moving average, unadjusted for seasonality, monthly
282-0102	Labour force survey estimates (LFS), by immigrant status, age group, Canada, regions, provinces and Montreal, Toronto, Vancouver census metropolitan areas, annual

282-0103	Labour force survey estimates (LFS), by immigrant status, sex and detailed age group, Canada, 3-month moving average, unadjusted for seasonality, monthly
282-0104	Labour force survey estimates (LFS), by immigrant status, sex and detailed age group, Canada, annual
282-0105	Labour force survey estimates (LFS), by immigrant status, educational attainment, sex and age group, Canada, 3-month moving average, unadjusted for seasonality, monthly
282-0106	Labour force survey estimates (LFS), by immigrant status, educational attainment, sex and age group, Canada, annual
282-0107	Labour force survey estimates (LFS), by immigrant status, country of birth, sex and age group, Canada, 3-month moving average, unadjusted for seasonality, monthly
282-0108	Labour force survey estimates (LFS), by immigrant status, country of birth, sex and age group, Canada, annual
282-0122	Labour force survey estimates (LFS), by provinces and economic regions based on 2011 Census boundaries, 3-month moving average, unadjusted for seasonality, monthly
282-0123	Labour force survey estimates (LFS), by provinces, territories and economic regions based on 2011 Census boundaries, annual
282-0124	Labour force survey estimates (LFS), employment by economic region based on 2011 Census boundaries and North American Industry Classification System (NAICS), 3-month moving average, unadjusted for seasonality, monthly
282-0125	Labour force survey estimates (LFS), employment by economic region based on 2011 Census boundaries and North American Industry Classification System (NAICS), annual
282-0128	Labour force survey estimates (LFS), by census metropolitan area based on 2011 Census boundaries, sex and age group, 3-month moving average, unadjusted for seasonality, monthly
282-0129	Labour force survey estimates (LFS), by census metropolitan area based on 2011 Census boundaries, sex and age group, annual
282-0130	Labour force survey estimates (LFS), employment by census metropolitan area based on 2011 Census boundaries and North American Industry Classification System (NAICS), 3-month moving average, unadjusted for seasonality, monthly
282-0131	Labour force survey estimates (LFS), employment by census metropolitan area based on 2011 Census boundaries and North American Industry Classification System (NAICS), annual
282-0134	Labour force survey estimates (LFS), by selected census agglomerations based on 2011 Census boundaries, annual
282-0135	Labour force survey estimates (LFS), by census metropolitan area based on 2011 Census boundaries, 3-month moving average, seasonally adjusted and unadjusted, monthly
282-0136	Labour force survey estimates (LFS), by Montréal, Toronto and Vancouver census metropolitan areas based on 2011 Census boundaries, seasonally adjusted and unadjusted, monthly

282-0137	Labour force survey estimates (LFS), by population centres and rural areas based on 2011 Census boundaries, sex and age group, unadjusted for seasonality, monthly
282-0138	Labour force survey estimates (LFS), by population centres and rural areas based on 2011 Census boundaries, sex and age group, annual
282-0139	Labour force survey estimates (LFS), employment by population centres and rural areas based on 2011 Census boundaries, class of worker and North American Industry Classification System (NAICS), unadjusted for seasonality, monthly
282-0140	Labour force survey estimates (LFS), employment by population centres and rural areas based on 2011 Census boundaries, class of worker and North American Industry Classification System (NAICS), annual
282-0141	Labour force survey estimates (LFS), by National Occupational Classification (NOC) and sex, unadjusted for seasonality, monthly
282-0142	Labour force survey estimates (LFS), by National Occupational Classification (NOC) and sex, annual
282-0143	Labour force survey estimates (LFS), by usual hours worked, National Occupational Classification (NOC) and sex, unadjusted for seasonality, monthly
282-0144	Labour force survey estimates (LFS), by usual hours worked, National Occupational Classification (NOC) and sex, annual
282-0145	Labour force survey estimates (LFS), by actual hours worked, National Occupational Classification (NOC) and sex, unadjusted for seasonality, monthly
282-0146	Labour force survey estimates (LFS), by actual hours worked, National Occupational Classification (NOC) and sex, annual
282-0147	Labour force survey estimates (LFS), multiple jobholders by National Occupational Classification (NOC), sex and age group, unadjusted for seasonality, monthly
282-0148	Labour force survey estimates (LFS), multiple jobholders by National Occupational Classification (NOC), sex and age group, annual
282-0149	Labour force survey estimates (LFS), job tenure by National Occupational Classification (NOC) and sex, unadjusted for seasonality, monthly
282-0150	Labour force survey estimates (LFS), job tenure by National Occupational Classification (NOC) and sex, annual
282-0151	Labour force survey estimates (LFS), wages of employees by type of work, National Occupational Classification (NOC), sex, and age group, unadjusted for seasonality, monthly
282-0152	Labour force survey estimates (LFS), wages of employees by type of work, National Occupational Classification (NOC), sex, and age group, annual
282-0153	Labour force survey estimates (LFS), employees working overtime (weekly) by National Occupational Classification (NOC), sex and age group, unadjusted for seasonality, monthly
282-0154	Labour force survey estimates (LFS), employees working overtime (weekly) by National Occupational Classification (NOC), sex and age group, annual

282-0155	Labour force survey estimates (LFS), employment by National Occupational Classification (NOC), seasonally adjusted, monthly
282-0156	Labour force survey estimates (LFS), employment by economic region based on 2011 Census boundaries and National Occupational Classification (NOC), three-month moving average, unadjusted for seasonality, monthly
282-0157	Labour force survey estimates (LFS), employment by economic region based on 2011 Census boundaries and National Occupational Classification (NOC), annual
282-0158	Labour force survey estimates (LFS), employment by census metropolitan area based on 2011 Census boundaries and National Occupational Classification (NOC), three-month moving average, unadjusted for seasonality, monthly
282-0159	Labour force survey estimates (LFS), employment by census metropolitan area based on 2011 Census boundaries and National Occupational Classification (NOC), annual
282-0160	Labour force survey estimates (LFS), weekly wage distributions of employees by type of work, National Occupational Classification (NOC) and sex, unadjusted for seasonality, monthly
282-0161	Labour force survey estimates (LFS), weekly wage distributions of employees by type of work, National Occupational Classification (NOC) and sex, annual
282-0162	Labour force survey estimates (LFS), hourly wage distribution of employees by type of work, National Occupational Classification (NOC) and sex, unadjusted for seasonality, monthly
282-0163	Labour force survey estimates (LFS), hourly wage distribution of employees by type of work, National Occupational Classification (NOC) and sex, annual
282-0164	Labour force survey estimates (LFS), employees by union status and National Occupational Classification (NOC), Canada, annual
282-0165	Labour force survey estimates (LFS), employment by Aboriginal group, National Occupational Classification (NOC), sex and age group, annual
282-0166	Labour force survey estimates (LFS), employment by Aboriginal group, National Occupational Classification (NOC) and age group, Canada, selected provinces and regions, annual
282-0167	Labour force survey estimates (LFS), average usual hours and wages of employees by age group, sex, union coverage, job permanency, and National Occupational Classification (NOC), unadjusted for seasonality, monthly
282-0168	Labour force survey estimates (LFS), regional unemployment rates used by the Employment Insurance Program, three-month moving average, seasonally adjusted, monthly
282-0200	Labour force survey estimates (LFS), weekly wage distributions of employees by type of work, North American Industry Classification System (NAICS), and sex, unadjusted for seasonality, monthly
282-0201	Labour force survey estimates (LFS), weekly wage distributions of employees by type of work, North American Industry Classification System (NAICS), and sex, annual
282-0204	Labour force survey estimates (LFS), hourly wage distributions of employees by type of work, North American Industry Classification System (NAICS), and sex, unadjusted for seasonality, monthly

282-0205	Labour force survey estimates (LFS), hourly wage distributions of employees by type of work, North American Industry Classification System (NAICS), and sex, annual
282-0208	Labour force survey estimates (LFS), by educational degree, sex and age group, unadjusted for seasonality, monthly
282-0209	Labour force survey estimates (LFS), by educational degree, sex and age group, annual
282-0210	Labour force survey estimates (LFS), by family type and family age composition, unadjusted for seasonality, monthly
282-0211	Labour force survey estimates (LFS), by family type and family age composition, annual
282-0212	Labour force survey estimates (LFS), hours lost by employees by reason of absence, full and part week and sex, unadjusted for seasonality, monthly
282-0213	Labour force survey estimates (LFS), hours lost by employees by reason of absence, full and part week and sex, annual
282-0214	Labour force survey estimates (LFS), activity prior to unemployment by sex and age group, unadjusted for seasonality, monthly
282-0215	Labour force survey estimates (LFS), activity prior to unemployment, by sex and age group, annual
282-0216	Labour force survey estimates (LFS), reason for leaving job during previous year by sex and age group, unadjusted for seasonality, monthly
282-0217	Labour force survey estimates (LFS), reason for leaving job during previous year by sex and age group, annual
282-0218	Labour force survey estimates (LFS), reason for not looking for work, by sex and age group, unadjusted for seasonality, monthly
282-0219	Labour force survey estimates (LFS), reason for not looking for work, by sex and age group, annual
282-0220	Labour Force Survey estimates (LFS), employees by union status, sex and age group, Canada and provinces, annual
282-0221	Labour Force Survey estimates (LFS), employees by union status, sex, age group and education level, Canada, annual
282-0223	Labour Force Survey estimates (LFS), employees by union status, North American Industry Classification System (NAICS) and sex, Canada, annual
282-0224	Labour Force Survey estimates (LFS), employees by union status, establishment size, job tenure, type of work and job permanency, Canada, annual
282-0225	Labour Force Survey estimates (LFS), average weekly earnings, average hourly wage rate and average usual weekly hours by union status and type of work, Canada and provinces, annual
282-0226	Labour force survey estimates (LFS), by Aboriginal group, sex and age group, Canada, selected provinces and regions, annual

282-0227	Labour force survey estimates (LFS), by detailed Aboriginal group, sex and age group, Canada and selected regions, annual
282-0228	Labour force survey estimates (LFS), by Aboriginal group, educational attainment and age group, Canada and selected regions, annual
282-0229	Labour force survey estimates (LFS), employment by Aboriginal group, North American Industry Classification System (NAICS), sex and age group, annual
282-0230	Labour force survey estimates (LFS), employment by Aboriginal group, North American Industry Classification System (NAICS) and age group, Canada and selected regions, annual
282-0233	Labour force survey estimates (LFS), average hourly and weekly wages and average usual weekly hours by Aboriginal group and age group, Canada, selected provinces and regions, annual

Selected surveys from Statistics Canada

3701	Labour Force Survey
------	---------------------

Selected summary tables from Statistics Canada

- *Average hourly wages of employees by selected characteristics and occupation, unadjusted data, by province (monthly)*
- *Days lost per worker by industry and sex*
- *People employed, by educational attainment*
- *Reasons for part-time work by sex and age group*
- *Self-employment, historical summary*
- *Employment by age, sex, type of work, class of worker and province (monthly)*
- *Actual hours worked per week by industry, seasonally adjusted (monthly)*
- *Labour force characteristics, unadjusted, by territory (3 month moving average)*
- *Employment by industry and sex*
- *Full-time and part-time employment by sex and age group*
- *Labour force characteristics by age and sex*
- *Labour force characteristics by immigrant status of population aged 25 to 54, and by educational attainment*
- *Labour force characteristics by immigrant status, by detailed age group*

- *Labour force characteristics by immigrant status of population aged 25 to 54, by country of birth*
- *Days lost per worker due to illness or disability, by sex, by province*
- *Employment by industry*
- *Labour force characteristics, seasonally adjusted, by province (monthly)*
- *Labour force characteristics, unadjusted, by province (monthly)*
- *Labour force, employment and unemployment, levels and rates, by province*
- *Economic indicators, by province and territory (monthly and quarterly)*
- *Days lost per worker by reason, by provinces*
- *Labour force characteristics, seasonally adjusted, by census metropolitan area (3 month moving average)*
- *Labour force characteristics, unadjusted, by economic region (3 month moving average)*
- *Distribution of employed people, by industry, by province*
- *Employment by major industry group, seasonally adjusted, by province (monthly)*
- *Labour force characteristics*
- *Labour force characteristics, unadjusted, by census metropolitan area (3 month moving average)*
- *Labour force characteristics, population 15 years and older, by census metropolitan area*
- *Labour force characteristics, population 15 years and older, by economic region, by province*
- *Canada: Economic and financial data*
- *Labour force characteristics by sex and age group*
- *Labour force characteristics by immigrant status of population aged 25 to 54, by province*
- *Latest statistics (monthly)*

Statistical tables

Table 1
Labour force characteristics by age and sex, Canada, seasonally adjusted

	November 2016	December 2016	S.E.	Change from			Percent change from		
				last month	last December	twelve months ago	last month	last December	twelve months ago
in thousands (except rates)									
15 years and over, both sexes									
Population	29,700.5	29,717.9	...	17.4	298.9	298.9	0.1	1.0	1.0
Labour force	19,498.1	19,566.6	30.3	68.5	169.3	169.3	0.4	0.9	0.9
Employment	18,171.3	18,225.0	29.9	53.7	214.1	214.1	0.3	1.2	1.2
Employment full-time	14,596.9	14,678.2	41.1	81.3	60.4	60.4	0.6	0.4	0.4
Employment part-time	3,574.4	3,546.8	38.2	-27.6	153.7	153.7	-0.8	4.5	4.5
Unemployment	1,326.9	1,341.6	25.3	14.7	-44.8	-44.8	1.1	-3.2	-3.2
Participation rate	65.6	65.8	0.1	0.2	-0.1	-0.1
Unemployment rate	6.8	6.9	0.1	0.1	-0.2	-0.2
Employment rate	61.2	61.3	0.1	0.1	0.1	0.1
Part-time rate	19.7	19.5	0.2	-0.2	0.6	0.6
15 to 24 years, both sexes									
Population	4,369.3	4,365.9	...	-3.4	-46.1	-46.1	-0.1	-1.0	-1.0
Labour force	2,802.4	2,803.4	17.5	1.0	-4.9	-4.9	0.0	-0.2	-0.2
Employment	2,440.2	2,451.4	16.3	11.2	8.9	8.9	0.5	0.4	0.4
Employment full-time	1,223.9	1,248.3	20.4	24.4	-40.5	-40.5	2.0	-3.1	-3.1
Employment part-time	1,216.3	1,203.1	21.1	-13.2	49.4	49.4	-1.1	4.3	4.3
Unemployment	362.2	352.0	14.7	-10.2	-13.8	-13.8	-2.8	-3.8	-3.8
Participation rate	64.1	64.2	0.4	0.1	0.5	0.5
Unemployment rate	12.9	12.6	0.5	-0.3	-0.4	-0.4
Employment rate	55.8	56.1	0.4	0.3	0.7	0.7
Part-time rate	49.8	49.1	0.8	-0.8	1.8	1.8
25 years and over, men									
Population	12,390.9	12,401.2	...	10.3	168.6	168.6	0.1	1.4	1.4
Labour force	8,846.6	8,862.2	15.8	15.6	49.8	49.8	0.2	0.6	0.6
Employment	8,281.9	8,297.1	16.8	15.2	68.9	68.9	0.2	0.8	0.8
Employment full-time	7,537.7	7,568.2	23.0	30.5	-8.8	-8.8	0.4	-0.1	-0.1
Employment part-time	744.2	728.9	18.4	-15.3	77.7	77.7	-2.1	11.9	11.9
Unemployment	564.7	565.1	15.1	0.4	-19.1	-19.1	0.1	-3.3	-3.3
Participation rate	71.4	71.5	0.1	0.1	-0.5	-0.5
Unemployment rate	6.4	6.4	0.2	0.0	-0.2	-0.2
Employment rate	66.8	66.9	0.1	0.1	-0.4	-0.4
Part-time rate	9.0	8.8	0.2	-0.2	0.9	0.9
25 years and over, women									
Population	12,940.3	12,950.8	...	10.5	176.4	176.4	0.1	1.4	1.4
Labour force	7,849.1	7,901.0	17.4	51.9	124.5	124.5	0.7	1.6	1.6
Employment	7,449.2	7,476.5	17.0	27.3	136.3	136.3	0.4	1.9	1.9
Employment full-time	5,835.3	5,861.7	26.4	26.4	109.7	109.7	0.5	1.9	1.9
Employment part-time	1,613.9	1,614.8	25.1	0.9	26.6	26.6	0.1	1.7	1.7
Unemployment	400.0	424.5	13.9	24.5	-11.8	-11.8	6.1	-2.7	-2.7
Participation rate	60.7	61.0	0.1	0.3	0.1	0.1
Unemployment rate	5.1	5.4	0.2	0.3	-0.2	-0.2
Employment rate	57.6	57.7	0.1	0.1	0.2	0.2
Part-time rate	21.7	21.6	0.3	-0.1	0.0	0.0
25 to 54 years, both sexes									
Population	14,641.8	14,639.3	...	-2.5	34.6	34.6	0.0	0.2	0.2
Labour force	12,656.3	12,700.9	23.2	44.6	48.2	48.2	0.4	0.4	0.4
Employment	11,923.3	11,962.1	24.7	38.8	100.3	100.3	0.3	0.8	0.8
Unemployment	733.0	738.9	18.9	5.9	-52.0	-52.0	0.8	-6.6	-6.6
Participation rate	86.4	86.8	0.2	0.4	0.2	0.2
Unemployment rate	5.8	5.8	0.1	0.0	-0.5	-0.5
Employment rate	81.4	81.7	0.2	0.3	0.5	0.5
25 to 54 years, men									
Population	7,288.6	7,287.3	...	-1.3	14.8	14.8	0.0	0.2	0.2
Labour force	6,628.9	6,626.3	14.6	-2.6	-11.3	-11.3	0.0	-0.2	-0.2
Employment	6,209.8	6,217.8	16.6	8.0	28.0	28.0	0.1	0.5	0.5
Unemployment	419.1	408.5	13.6	-10.6	-39.3	-39.3	-2.5	-8.8	-8.8
Participation rate	90.9	90.9	0.2	0.0	-0.4	-0.4
Unemployment rate	6.3	6.2	0.2	-0.1	-0.5	-0.5
Employment rate	85.2	85.3	0.2	0.1	0.2	0.2

See notes at the end of the table.

Table 1 – continued

Labour force characteristics by age and sex, Canada, seasonally adjusted

	November 2016	December 2016	S.E. ¹	Change from			Percent change from		
				last month	last December	twelve months ago	last month	last December	twelve months ago
in thousands (except rates)									
25 to 54 years, women									
Population	7,353.2	7,352.0	...	-1.2	19.8	19.8	0.0	0.3	0.3
Labour force	6,027.4	6,074.7	17.0	47.3	59.6	59.6	0.8	1.0	1.0
Employment	5,713.5	5,744.3	17.3	30.8	72.2	72.2	0.5	1.3	1.3
Unemployment	313.9	330.4	12.8	16.5	-12.6	-12.6	5.3	-3.7	-3.7
Participation rate	82.0	82.6	0.2	0.6	0.6	0.6
Unemployment rate	5.2	5.4	0.2	0.2	-0.3	-0.3
Employment rate	77.7	78.1	0.2	0.4	0.7	0.7
55 years and over, both sexes									
Population	10,689.4	10,712.7	...	23.3	310.4	310.4	0.2	3.0	3.0
Labour force	4,039.4	4,062.3	18.8	22.9	126.0	126.0	0.6	3.2	3.2
Employment	3,807.8	3,811.6	18.8	3.8	105.0	105.0	0.1	2.8	2.8
Unemployment	231.6	250.7	10.2	19.1	21.0	21.0	8.2	9.1	9.1
Participation rate	37.8	37.9	0.2	0.1	0.1	0.1
Unemployment rate	5.7	6.2	0.3	0.5	0.4	0.4
Employment rate	35.6	35.6	0.2	0.0	0.0	0.0
55 years and over, men									
Population	5,102.3	5,113.9	...	11.6	153.8	153.8	0.2	3.1	3.1
Labour force	2,217.7	2,236.0	12.5	18.3	61.2	61.2	0.8	2.8	2.8
Employment	2,072.2	2,079.4	12.7	7.2	41.0	41.0	0.3	2.0	2.0
Unemployment	145.5	156.6	7.6	11.1	20.2	20.2	7.6	14.8	14.8
Participation rate	43.5	43.7	0.3	0.2	-0.1	-0.1
Unemployment rate	6.6	7.0	0.3	0.4	0.7	0.7
Employment rate	40.6	40.7	0.3	0.1	-0.4	-0.4
55 years and over, women									
Population	5,587.1	5,598.9	...	11.8	156.7	156.7	0.2	2.9	2.9
Labour force	1,821.8	1,826.4	13.1	4.6	65.0	65.0	0.3	3.7	3.7
Employment	1,735.7	1,732.2	13.0	-3.5	64.1	64.1	-0.2	3.8	3.8
Unemployment	86.1	94.1	6.6	8.0	0.8	0.8	9.3	0.9	0.9
Participation rate	32.6	32.6	0.2	0.0	0.2	0.2
Unemployment rate	4.7	5.2	0.4	0.5	-0.1	-0.1
Employment rate	31.1	30.9	0.2	-0.2	0.2	0.2

1. Average standard error of change in two consecutive months (see "Sampling Errors" in Data Quality for further explanations).

Note(s): Related CANSIM table 282-0087. The sum of individual categories may not always add to the total due to rounding.

Table 2
Employment by class of worker and industry, Canada, seasonally adjusted

	November 2016	December 2016	S.E. ¹	Change from			Percent change from		
				last month	last December	twelve months ago	last month	last December	twelve months ago
	in thousands								
Class of worker									
Employees	15,414.1	15,486.2	36.7	72.1	292.2	292.2	0.5	1.9	1.9
Self-employed ²	2,757.2	2,738.8	26.5	-18.4	-78.1	-78.1	-0.7	-2.8	-2.8
Public/private sector employees									
Public sector employees	3,644.3	3,672.9	21.0	28.6	70.6	70.6	0.8	2.0	2.0
Private sector employees	11,769.8	11,813.3	36.8	43.5	221.7	221.7	0.4	1.9	1.9
Industry	18,171.3	18,225.0	29.9	53.7	214.1	214.1	0.3	1.2	1.2
Goods-producing sector	3,823.3	3,825.0	16.9	1.7	-61.6	-61.6	0.0	-1.6	-1.6
Agriculture	290.2	283.4	5.6	-6.8	-14.0	-14.0	-2.3	-4.7	-4.7
Forestry, fishing, mining, quarrying, oil and gas extraction ³	326.7	322.6	5.3	-4.1	-29.3	-29.3	-1.3	-8.3	-8.3
Utilities	136.9	140.2	2.8	3.3	7.9	7.9	2.4	6.0	6.0
Construction	1,390.9	1,396.6	11.6	5.7	27.2	27.2	0.4	2.0	2.0
Manufacturing	1,678.6	1,682.2	11.0	3.6	-53.4	-53.4	0.2	-3.1	-3.1
Services-producing sector	14,348.0	14,400.0	28.5	52.0	275.8	275.8	0.4	2.0	2.0
Wholesale and retail trade	2,752.8	2,761.7	15.2	8.9	38.1	38.1	0.3	1.4	1.4
Transportation and warehousing	908.9	911.3	8.3	2.4	1.8	1.8	0.3	0.2	0.2
Finance, insurance, real estate, rental and leasing	1,146.7	1,149.2	8.7	2.5	38.9	38.9	0.2	3.5	3.5
Professional, scientific and technical services	1,384.9	1,413.0	11.3	28.1	15.8	15.8	2.0	1.1	1.1
Business, building and other support services	761.8	751.7	10.5	-10.1	-8.6	-8.6	-1.3	-1.1	-1.1
Educational services	1,276.8	1,284.3	10.5	7.5	12.8	12.8	0.6	1.0	1.0
Health care and social assistance	2,336.5	2,350.4	11.5	13.9	19.3	19.3	0.6	0.8	0.8
Information, culture and recreation	799.6	799.8	10.2	0.2	48.5	48.5	0.0	6.5	6.5
Accommodation and food services	1,226.1	1,219.3	11.8	-6.8	31.2	31.2	-0.6	2.6	2.6
Other services (except public administration)	799.1	804.0	8.2	4.9	42.2	42.2	0.6	5.5	5.5
Public administration	954.6	955.5	7.5	0.9	35.9	35.9	0.1	3.9	3.9

1. Average standard error of change in two consecutive months (see "Sampling Errors" in Data Quality for further explanations).

2. Includes both incorporated and unincorporated working owners, self-employed persons who do not have a business and persons working in a family business without pay.

3. Also referred to as Natural resources.

Note(s): Related CANSIM Tables 282-0088, 282-0089. The sum of individual categories may not always add to the total due to rounding.

Table 3
Labour force characteristics by province, seasonally adjusted

	November 2016	December 2016	S.E. ¹	Change from			Percent change from		
				last month	last December	twelve months ago	last month	last December	twelve months ago
in thousands (except rates)									
Newfoundland and Labrador									
Population	444.8	445.0	...	0.2	2.0	2.0	0.0	0.5	0.5
Labour force	267.0	266.8	2.1	-0.2	-5.3	-5.3	-0.1	-1.9	-1.9
Employment	228.7	227.1	2.1	-1.6	-5.7	-5.7	-0.7	-2.4	-2.4
Employment full-time	192.5	188.7	2.6	-3.8	-6.0	-6.0	-2.0	-3.1	-3.1
Employment part-time	36.1	38.4	2.1	2.3	0.3	0.3	6.4	0.8	0.8
Unemployment	38.3	39.7	2.1	1.4	0.4	0.4	3.7	1.0	1.0
Participation rate	60.0	60.0	0.5	0.0	-1.4	-1.4
Unemployment rate	14.3	14.9	0.7	0.6	0.5	0.5
Employment rate	51.4	51.0	0.5	-0.4	-1.6	-1.6
Prince Edward Island									
Population	122.3	122.4	...	0.1	1.2	1.2	0.1	1.0	1.0
Labour force	80.2	80.7	0.6	0.5	0.1	0.1	0.6	0.1	0.1
Employment	71.5	72.1	0.7	0.6	-0.7	-0.7	0.8	-1.0	-1.0
Employment full-time	58.8	59.0	0.8	0.2	-1.7	-1.7	0.3	-2.8	-2.8
Employment part-time	12.7	13.1	0.7	0.4	1.0	1.0	3.1	8.3	8.3
Unemployment	8.7	8.6	0.6	-0.1	0.7	0.7	-1.1	8.9	8.9
Participation rate	65.6	65.9	0.5	0.3	-0.6	-0.6
Unemployment rate	10.8	10.7	0.7	-0.1	0.9	0.9
Employment rate	58.5	58.9	0.5	0.4	-1.2	-1.2
Nova Scotia									
Population	789.8	790.0	...	0.2	3.0	3.0	0.0	0.4	0.4
Labour force	487.0	489.0	2.6	2.0	0.9	0.9	0.4	0.2	0.2
Employment	448.0	448.5	2.7	0.5	2.6	2.6	0.1	0.6	0.6
Employment full-time	360.6	355.1	3.6	-5.5	-13.3	-13.3	-1.5	-3.6	-3.6
Employment part-time	87.4	93.4	3.2	6.0	15.9	15.9	6.9	20.5	20.5
Unemployment	39.0	40.5	2.4	1.5	-1.7	-1.7	3.8	-4.0	-4.0
Participation rate	61.7	61.9	0.3	0.2	-0.1	-0.1
Unemployment rate	8.0	8.3	0.5	0.3	-0.3	-0.3
Employment rate	56.7	56.8	0.3	0.1	0.1	0.1
New Brunswick									
Population	623.8	623.9	...	0.1	2.0	2.0	0.0	0.3	0.3
Labour force	388.2	391.6	2.2	3.4	4.3	4.3	0.9	1.1	1.1
Employment	354.3	354.9	2.3	0.6	2.1	2.1	0.2	0.6	0.6
Employment full-time	297.6	299.0	2.8	1.4	-2.3	-2.3	0.5	-0.8	-0.8
Employment part-time	56.7	56.0	2.4	-0.7	4.5	4.5	-1.2	8.7	8.7
Unemployment	33.9	36.7	2.1	2.8	2.2	2.2	8.3	6.4	6.4
Participation rate	62.2	62.8	0.3	0.6	0.5	0.5
Unemployment rate	8.7	9.4	0.5	0.7	0.5	0.5
Employment rate	56.8	56.9	0.4	0.1	0.2	0.2
Quebec									
Population	6,904.6	6,905.9	...	1.3	43.7	43.7	0.0	0.6	0.6
Labour force	4,453.4	4,493.9	15.8	40.5	34.1	34.1	0.9	0.8	0.8
Employment	4,178.7	4,199.1	16.1	20.4	89.5	89.5	0.5	2.2	2.2
Employment full-time	3,349.8	3,395.9	21.8	46.1	85.4	85.4	1.4	2.6	2.6
Employment part-time	828.9	803.1	19.8	-25.8	4.0	4.0	-3.1	0.5	0.5
Unemployment	274.8	294.8	13.9	20.0	-55.4	-55.4	7.3	-15.8	-15.8
Participation rate	64.5	65.1	0.2	0.6	0.1	0.1
Unemployment rate	6.2	6.6	0.3	0.4	-1.3	-1.3
Employment rate	60.5	60.8	0.2	0.3	0.9	0.9
Ontario									
Population	11,581.3	11,591.4	...	10.1	146.9	146.9	0.1	1.3	1.3
Labour force	7,508.5	7,527.6	20.5	19.1	61.4	61.4	0.3	0.8	0.8
Employment	7,037.6	7,046.7	19.5	9.1	80.6	80.6	0.1	1.2	1.2
Employment full-time	5,670.7	5,690.8	26.9	20.1	6.8	6.8	0.4	0.1	0.1
Employment part-time	1,366.8	1,355.9	25.5	-10.9	73.9	73.9	-0.8	5.8	5.8
Unemployment	471.0	481.0	16.7	10.0	-19.1	-19.1	2.1	-3.8	-3.8
Participation rate	64.8	64.9	0.2	0.1	-0.3	-0.3
Unemployment rate	6.3	6.4	0.2	0.1	-0.3	-0.3
Employment rate	60.8	60.8	0.2	0.0	-0.1	-0.1

See notes at the end of the table.

Table 3 – continued

Labour force characteristics by province, seasonally adjusted

	November 2016	December 2016	S.E.	Change from			Percent change from		
				last month	last December	twelve months ago	last month	last December	twelve months ago
in thousands (except rates)									
Manitoba									
Population	1,003.6	1,004.4	...	0.8	12.5	12.5	0.1	1.3	1.3
Labour force	673.3	675.4	2.6	2.1	1.2	1.2	0.3	0.2	0.2
Employment	631.8	633.0	2.6	1.2	-1.0	-1.0	0.2	-0.2	-0.2
Employment full-time	504.4	509.4	3.6	5.0	2.9	2.9	1.0	0.6	0.6
Employment part-time	127.3	123.6	3.3	-3.7	-4.0	-4.0	-2.9	-3.1	-3.1
Unemployment	41.5	42.4	2.1	0.9	2.3	2.3	2.2	5.7	5.7
Participation rate	67.1	67.2	0.3	0.1	-0.8	-0.8
Unemployment rate	6.2	6.3	0.3	0.1	0.4	0.4
Employment rate	63.0	63.0	0.3	0.0	-0.9	-0.9
Saskatchewan									
Population	871.9	872.5	...	0.6	7.5	7.5	0.1	0.9	0.9
Labour force	610.9	607.7	2.6	-3.2	-0.9	-0.9	-0.5	-0.1	-0.1
Employment	569.3	568.2	2.6	-1.1	-6.9	-6.9	-0.2	-1.2	-1.2
Employment full-time	469.1	466.5	3.5	-2.6	-12.4	-12.4	-0.6	-2.6	-2.6
Employment part-time	100.2	101.7	3.2	1.5	5.5	5.5	1.5	5.7	5.7
Unemployment	41.6	39.5	2.2	-2.1	5.9	5.9	-5.0	17.6	17.6
Participation rate	70.1	69.7	0.3	-0.4	-0.7	-0.7
Unemployment rate	6.8	6.5	0.3	-0.3	1.0	1.0
Employment rate	65.3	65.1	0.3	-0.2	-1.4	-1.4
Alberta									
Population	3,408.3	3,409.6	...	1.3	30.6	30.6	0.0	0.9	0.9
Labour force	2,483.1	2,478.3	9.6	-4.8	21.2	21.2	-0.2	0.9	0.9
Employment	2,260.4	2,267.3	9.7	6.9	-18.8	-18.8	0.3	-0.8	-0.8
Employment full-time	1,827.6	1,846.1	13.6	18.5	-34.8	-34.8	1.0	-1.9	-1.9
Employment part-time	432.8	421.2	12.6	-11.6	16.0	16.0	-2.7	3.9	3.9
Unemployment	222.8	211.0	8.2	-11.8	40.0	40.0	-5.3	23.4	23.4
Participation rate	72.9	72.7	0.3	-0.2	0.0	0.0
Unemployment rate	9.0	8.5	0.3	-0.5	1.5	1.5
Employment rate	66.3	66.5	0.3	0.2	-1.2	-1.2
British Columbia									
Population	3,950.0	3,952.8	...	2.8	49.6	49.6	0.1	1.3	1.3
Labour force	2,546.6	2,555.7	10.8	9.1	52.5	52.5	0.4	2.1	2.1
Employment	2,391.1	2,408.1	10.7	17.0	72.4	72.4	0.7	3.1	3.1
Employment full-time	1,865.7	1,867.8	15.1	2.1	35.9	35.9	0.1	2.0	2.0
Employment part-time	525.4	540.3	14.4	14.9	36.5	36.5	2.8	7.2	7.2
Unemployment	155.4	147.6	8.9	-7.8	-19.9	-19.9	-5.0	-11.9	-11.9
Participation rate	64.5	64.7	0.3	0.2	0.6	0.6
Unemployment rate	6.1	5.8	0.3	-0.3	-0.9	-0.9
Employment rate	60.5	60.9	0.3	0.4	1.1	1.1

1. Average standard error of change in two consecutive months (see "Sampling Errors" in Data Quality for further explanations).

Note(s): Related CANSIM Table 282-0087. The sum of individual categories may not always add to the total due to rounding.

Table 4-1
Selected labour force characteristics (seasonally adjusted) — Newfoundland and Labrador

	November 2016	December 2016	S.E. ¹	Change from			Percent change from		
				last month	last December	twelve months ago	last month	last December	twelve months ago
in thousands (except rates)									
Both sexes, 15 years and over									
Population	444.8	445.0	...	0.2	2.0	2.0	0.0	0.5	0.5
Labour force	267.0	266.8	2.1	-0.2	-5.3	-5.3	-0.1	-1.9	-1.9
Employment	228.7	227.1	2.1	-1.6	-5.7	-5.7	-0.7	-2.4	-2.4
Employment full-time	192.5	188.7	2.6	-3.8	-6.0	-6.0	-2.0	-3.1	-3.1
Unemployment	38.3	39.7	2.1	1.4	0.4	0.4	3.7	1.0	1.0
Participation rate	60.0	60.0	0.5	0.0	-1.4	-1.4
Unemployment rate	14.3	14.9	0.7	0.6	0.5	0.5
Employment rate	51.4	51.0	0.5	-0.4	-1.6	-1.6
Part-time rate	15.8	16.9	0.9	1.1	0.5	0.5
Both sexes, 15 to 24 years									
Population	55.1	55.0	...	-0.1	-0.7	-0.7	-0.2	-1.3	-1.3
Labour force	35.1	36.2	0.9	1.1	-1.3	-1.3	3.1	-3.5	-3.5
Employment	27.7	28.7	1.0	1.0	-2.5	-2.5	3.6	-8.0	-8.0
Unemployment	7.4	7.5	0.9	0.1	1.2	1.2	1.4	19.0	19.0
Participation rate	63.7	65.8	1.7	2.1	-1.5	-1.5
Unemployment rate	21.1	20.7	2.4	-0.4	3.9	3.9
Employment rate	50.3	52.2	1.7	1.9	-3.8	-3.8
Part-time rate	46.6	49.1	3.6	2.6	0.4	0.4
Men, 25 years and over									
Population	189.9	190.0	...	0.1	1.2	1.2	0.1	0.6	0.6
Labour force	121.7	119.5	1.2	-2.2	-4.3	-4.3	-1.8	-3.5	-3.5
Employment	102.8	98.8	1.4	-4.0	-3.6	-3.6	-3.9	-3.5	-3.5
Unemployment	18.8	20.6	1.4	1.8	-0.8	-0.8	9.6	-3.7	-3.7
Participation rate	64.1	62.9	0.7	-1.2	-2.7	-2.7
Unemployment rate	15.4	17.2	1.1	1.8	-0.1	-0.1
Employment rate	54.1	52.0	0.7	-2.1	-2.2	-2.2
Part-time rate	5.2	6.8	0.9	1.6	3.6	3.6
Women, 25 years and over									
Population	199.8	199.9	...	0.1	1.3	1.3	0.1	0.7	0.7
Labour force	110.2	111.2	1.2	1.0	0.4	0.4	0.9	0.4	0.4
Employment	98.1	99.6	1.2	1.5	0.4	0.4	1.5	0.4	0.4
Unemployment	12.1	11.6	1.1	-0.5	0.0	0.0	-4.1	0.0	0.0
Participation rate	55.2	55.6	0.6	0.4	-0.2	-0.2
Unemployment rate	11.0	10.4	0.9	-0.6	-0.1	-0.1
Employment rate	49.1	49.8	0.6	0.7	-0.1	-0.1
Part-time rate	18.2	17.7	1.4	-0.6	-2.1	-2.1
Industry	228.7	227.1	2.1	-1.6	-5.7	-5.7	-0.7	-2.4	-2.4
Goods-producing sector									
Agriculture	50.9	46.5	1.4	-4.4	-5.2	-5.2	-8.6	-10.1	-10.1
Forestry, fishing, mining, quarrying, oil and gas extraction ²	2.1	1.2	0.3	-0.9	0.0	0.0	-42.9	0.0	0.0
Utilities	14.0	12.4	0.8	-1.6	-2.9	-2.9	-11.4	-19.0	-19.0
Construction	3.0	2.7	0.2	-0.3	0.4	0.4	-10.0	17.4	17.4
Manufacturing	22.8	21.2	1.0	-1.6	-0.7	-0.7	-7.0	-3.2	-3.2
	8.9	9.0	0.8	0.1	-2.0	-2.0	1.1	-18.2	-18.2
Services-producing sector									
Wholesale and retail trade	177.8	180.6	1.8	2.8	-0.5	-0.5	1.6	-0.3	-0.3
Transportation and warehousing	39.9	41.2	0.9	1.3	-2.0	-2.0	3.3	-4.6	-4.6
Finance, insurance, real estate, rental and leasing	9.7	10.1	0.6	0.4	1.0	1.0	4.1	11.0	11.0
Professional, scientific and technical services	7.2	7.6	0.4	0.4	-1.2	-1.2	5.6	-13.6	-13.6
Business, building and other support services	10.4	10.9	0.4	0.5	-0.4	-0.4	4.8	-3.5	-3.5
Educational services	6.6	6.5	0.5	-0.1	-1.8	-1.8	-1.5	-21.7	-21.7
Health care and social assistance	14.4	15.1	0.6	0.7	0.2	0.2	4.9	1.3	1.3
Information, culture and recreation	39.1	39.8	0.8	0.7	0.9	0.9	1.8	2.3	2.3
Accommodation and food services	7.1	7.4	0.6	0.3	1.5	1.5	4.2	25.4	25.4
Other services (except public administration)	15.8	14.8	0.8	-1.0	0.6	0.6	-6.3	4.2	4.2
Public administration	11.9	11.7	0.6	-0.2	-0.7	-0.7	-1.7	-5.6	-5.6
	15.5	15.4	0.6	-0.1	1.2	1.2	-0.6	8.5	8.5

1. Average standard error of change in two consecutive months (see "Sampling Errors" in Data Quality for further explanations).

2. Also referred to as Natural resources.

Note(s): Related CANSIM Tables 282-0087, 282-0088. The sum of individual categories may not always add to the total due to rounding.

Table 4-2
Selected labour force characteristics (seasonally adjusted) — Prince Edward Island

	November 2016	December 2016	S.E.	Change from			Percent change from		
				last month	last December	twelve months ago	last month	last December	twelve months ago
in thousands (except rates)									
Both sexes, 15 years and over									
Population	122.3	122.4	...	0.1	1.2	1.2	0.1	1.0	1.0
Labour force	80.2	80.7	0.6	0.5	0.1	0.1	0.6	0.1	0.1
Employment	71.5	72.1	0.7	0.6	-0.7	-0.7	0.8	-1.0	-1.0
Employment full-time	58.8	59.0	0.8	0.2	-1.7	-1.7	0.3	-2.8	-2.8
Unemployment	8.7	8.6	0.6	-0.1	0.7	0.7	-1.1	8.9	8.9
Participation rate	65.6	65.9	0.5	0.3	-0.6	-0.6
Unemployment rate	10.8	10.7	0.7	-0.1	0.9	0.9
Employment rate	58.5	58.9	0.5	0.4	-1.2	-1.2
Part-time rate	17.8	18.2	0.9	0.4	1.5	1.5
Both sexes, 15 to 24 years									
Population	17.7	17.7	...	0.0	-0.4	-0.4	0.0	-2.2	-2.2
Labour force	12.0	12.5	0.3	0.5	-0.3	-0.3	4.2	-2.3	-2.3
Employment	10.3	10.7	0.3	0.4	-0.4	-0.4	3.9	-3.6	-3.6
Unemployment	1.7	1.7	0.3	0.0	-0.1	-0.1	0.0	-5.6	-5.6
Participation rate	67.8	70.6	1.7	2.8	-0.1	-0.1
Unemployment rate	14.2	13.6	2.3	-0.6	-0.5	-0.5
Employment rate	58.2	60.5	1.9	2.3	-0.8	-0.8
Part-time rate	48.5	46.7	3.6	-1.8	4.4	4.4
Men, 25 years and over									
Population	50.2	50.2	...	0.0	0.8	0.8	0.0	1.6	1.6
Labour force	35.2	35.3	0.3	0.1	0.6	0.6	0.3	1.7	1.7
Employment	30.7	30.9	0.4	0.2	-0.5	-0.5	0.7	-1.6	-1.6
Unemployment	4.5	4.4	0.4	-0.1	1.1	1.1	-2.2	33.3	33.3
Participation rate	70.1	70.3	0.7	0.2	0.1	0.1
Unemployment rate	12.8	12.5	1.0	-0.3	3.0	3.0
Employment rate	61.2	61.6	0.8	0.4	-2.0	-2.0
Part-time rate	7.5	8.4	1.0	0.9	0.8	0.8
Women, 25 years and over									
Population	54.5	54.5	...	0.0	0.8	0.8	0.0	1.5	1.5
Labour force	32.9	32.9	0.3	0.0	-0.2	-0.2	0.0	-0.6	-0.6
Employment	30.5	30.5	0.4	0.0	0.2	0.2	0.0	0.7	0.7
Unemployment	2.4	2.4	0.3	0.0	-0.4	-0.4	0.0	-14.3	-14.3
Participation rate	60.4	60.4	0.6	0.0	-1.2	-1.2
Unemployment rate	7.3	7.3	1.0	0.0	-1.2	-1.2
Employment rate	56.0	56.0	0.7	0.0	-0.4	-0.4
Part-time rate	17.7	18.0	1.4	0.3	1.5	1.5
Industry									
	71.5	72.1	0.7	0.6	-0.7	-0.7	0.8	-1.0	-1.0
Goods-producing sector									
	16.2	16.3	0.5	0.1	-0.5	-0.5	0.6	-3.0	-3.0
Agriculture	2.7	2.9	0.3	0.2	-0.1	-0.1	7.4	-3.3	-3.3
Forestry, fishing, mining, quarrying, oil and gas extraction ²	1.9	2.3	0.3	0.4	-0.1	-0.1	21.1	-4.2	-4.2
Utilities	0.4	0.3	0.1	-0.1	0.0	0.0	-25.0	0.0	0.0
Construction	5.0	4.8	0.3	-0.2	-0.1	-0.1	-4.0	-2.0	-2.0
Manufacturing	6.3	6.0	0.3	-0.3	-0.1	-0.1	-4.8	-1.6	-1.6
Services-producing sector									
	55.3	55.8	0.6	0.5	-0.2	-0.2	0.9	-0.4	-0.4
Wholesale and retail trade	10.5	10.4	0.3	-0.1	-0.4	-0.4	-1.0	-3.7	-3.7
Transportation and warehousing	2.5	2.8	0.2	0.3	0.4	0.4	12.0	16.7	16.7
Finance, insurance, real estate, rental and leasing	2.8	2.8	0.1	0.0	0.1	0.1	0.0	3.7	3.7
Professional, scientific and technical services	3.3	3.3	0.2	0.0	0.0	0.0	0.0	0.0	0.0
Business, building and other support services	2.4	2.3	0.2	-0.1	-0.2	-0.2	-4.2	-8.0	-8.0
Educational services	5.4	5.5	0.2	0.1	0.0	0.0	1.9	0.0	0.0
Health care and social assistance	10.1	10.1	0.3	0.0	0.5	0.5	0.0	5.2	5.2
Information, culture and recreation	2.9	2.9	0.2	0.0	0.7	0.7	0.0	31.8	31.8
Accommodation and food services	5.5	5.6	0.3	0.1	-1.1	-1.1	1.8	-16.4	-16.4
Other services (except public administration)	3.2	3.5	0.2	0.3	0.1	0.1	9.4	2.9	2.9
Public administration	6.7	6.7	0.2	0.0	-0.2	-0.2	0.0	-2.9	-2.9

1. Average standard error of change in two consecutive months (see "Sampling Errors" in Data Quality for further explanations).

2. Also referred to as Natural resources.

Note(s): Related CANSIM Tables 282-0087, 282-0088. The sum of individual categories may not always add to the total due to rounding.

Table 4-3
Selected labour force characteristics (seasonally adjusted) — Nova Scotia

	November 2016	December 2016	S.E.	Change from			Percent change from		
				last month	last December	twelve months ago	last month	last December	twelve months ago
in thousands (except rates)									
Both sexes, 15 years and over									
Population	789.8	790.0	...	0.2	3.0	3.0	0.0	0.4	0.4
Labour force	487.0	489.0	2.6	2.0	0.9	0.9	0.4	0.2	0.2
Employment	448.0	448.5	2.7	0.5	2.6	2.6	0.1	0.6	0.6
Employment full-time	360.6	355.1	3.6	-5.5	-13.3	-13.3	-1.5	-3.6	-3.6
Unemployment	39.0	40.5	2.4	1.5	-1.7	-1.7	3.8	-4.0	-4.0
Participation rate	61.7	61.9	0.3	0.2	-0.1	-0.1
Unemployment rate	8.0	8.3	0.5	0.3	-0.3	-0.3
Employment rate	56.7	56.8	0.3	0.1	0.1	0.1
Part-time rate	19.5	20.8	0.7	1.3	3.4	3.4
Both sexes, 15 to 24 years									
Population	109.2	109.1	...	-0.1	-1.5	-1.5	-0.1	-1.4	-1.4
Labour force	67.8	67.9	1.5	0.1	-2.9	-2.9	0.1	-4.1	-4.1
Employment	57.3	57.1	1.4	-0.2	-2.9	-2.9	-0.3	-4.8	-4.8
Unemployment	10.5	10.8	1.3	0.3	-0.1	-0.1	2.9	-0.9	-0.9
Participation rate	62.1	62.2	1.4	0.1	-1.8	-1.8
Unemployment rate	15.5	15.9	1.7	0.4	0.5	0.5
Employment rate	52.5	52.3	1.3	-0.2	-1.9	-1.9
Part-time rate	46.8	49.2	2.7	2.4	5.7	5.7
Men, 25 years and over									
Population	326.1	326.3	...	0.2	2.4	2.4	0.1	0.7	0.7
Labour force	213.2	214.5	1.5	1.3	2.7	2.7	0.6	1.3	1.3
Employment	194.7	194.2	1.6	-0.5	0.9	0.9	-0.3	0.5	0.5
Unemployment	18.5	20.3	1.5	1.8	1.8	1.8	9.7	9.7	9.7
Participation rate	65.4	65.7	0.5	0.3	0.3	0.3
Unemployment rate	8.7	9.5	0.7	0.8	0.8	0.8
Employment rate	59.7	59.5	0.5	-0.2	-0.2	-0.2
Part-time rate	10.3	9.2	0.8	-1.1	1.8	1.8
Women, 25 years and over									
Population	354.5	354.7	...	0.2	2.2	2.2	0.1	0.6	0.6
Labour force	206.0	206.5	1.5	0.5	1.0	1.0	0.2	0.5	0.5
Employment	196.0	197.2	1.5	1.2	4.6	4.6	0.6	2.4	2.4
Unemployment	10.0	9.4	1.2	-0.6	-3.5	-3.5	-6.0	-27.1	-27.1
Participation rate	58.1	58.2	0.4	0.1	-0.1	-0.1
Unemployment rate	4.9	4.6	0.6	-0.3	-1.7	-1.7
Employment rate	55.3	55.6	0.4	0.3	1.0	1.0
Part-time rate	20.8	24.0	1.0	3.3	4.8	4.8
Industry									
	448.0	448.5	2.7	0.5	2.6	2.6	0.1	0.6	0.6
Goods-producing sector									
Agriculture	4.9	4.8	0.6	-0.1	-1.2	-1.2	-2.0	-20.0	-20.0
Forestry, fishing, mining, quarrying, oil and gas extraction ²	12.4	11.5	0.9	-0.9	0.7	0.7	-7.3	6.5	6.5
Utilities	3.4	3.5	0.2	0.1	-0.3	-0.3	2.9	-7.9	-7.9
Construction	33.7	33.3	1.1	-0.4	-0.2	-0.2	-1.2	-0.6	-0.6
Manufacturing	28.4	27.7	0.8	-0.7	-3.1	-3.1	-2.5	-10.1	-10.1
Services-producing sector									
	365.2	367.7	2.5	2.5	6.7	6.7	0.7	1.9	1.9
Wholesale and retail trade	74.1	74.0	1.3	-0.1	2.8	2.8	-0.1	3.9	3.9
Transportation and warehousing	19.7	20.1	0.7	0.4	-0.4	-0.4	2.0	-2.0	-2.0
Finance, insurance, real estate, rental and leasing	23.3	23.6	0.6	0.3	-1.0	-1.0	1.3	-4.1	-4.1
Professional, scientific and technical services	27.1	28.3	0.9	1.2	2.4	2.4	4.4	9.3	9.3
Business, building and other support services	16.8	17.2	0.8	0.4	-0.7	-0.7	2.4	-3.9	-3.9
Educational services	36.3	36.2	1.1	-0.1	-0.4	-0.4	-0.3	-1.1	-1.1
Health care and social assistance	74.6	75.9	1.1	1.3	3.8	3.8	1.7	5.3	5.3
Information, culture and recreation	16.2	15.5	0.9	-0.7	-0.6	-0.6	-4.3	-3.7	-3.7
Accommodation and food services	28.3	28.1	1.1	-0.2	-1.9	-1.9	-0.7	-6.3	-6.3
Other services (except public administration)	20.1	20.8	0.8	0.7	2.1	2.1	3.5	11.2	11.2
Public administration	28.7	28.0	0.8	-0.7	0.4	0.4	-2.4	1.4	1.4

1. Average standard error of change in two consecutive months (see "Sampling Errors" in Data Quality for further explanations).

2. Also referred to as Natural resources.

Note(s): Related CANSIM Tables 282-0087, 282-0088. The sum of individual categories may not always add to the total due to rounding.

Table 4-4
Selected labour force characteristics (seasonally adjusted) — New Brunswick

	November 2016	December 2016	S.E.	Change from			Percent change from		
				last month	last December	twelve months ago	last month	last December	twelve months ago
in thousands (except rates)									
Both sexes, 15 years and over									
Population	623.8	623.9	...	0.1	2.0	2.0	0.0	0.3	0.3
Labour force	388.2	391.6	2.2	3.4	4.3	4.3	0.9	1.1	1.1
Employment	354.3	354.9	2.3	0.6	2.1	2.1	0.2	0.6	0.6
Employment full-time	297.6	299.0	2.8	1.4	-2.3	-2.3	0.5	-0.8	-0.8
Unemployment	33.9	36.7	2.1	2.8	2.2	2.2	8.3	6.4	6.4
Participation rate	62.2	62.8	0.3	0.6	0.5	0.5
Unemployment rate	8.7	9.4	0.5	0.7	0.5	0.5
Employment rate	56.8	56.9	0.4	0.1	0.2	0.2
Part-time rate	16.0	15.8	0.7	-0.2	1.2	1.2
Both sexes, 15 to 24 years									
Population	82.4	82.4	...	0.0	-1.2	-1.2	0.0	-1.4	-1.4
Labour force	55.2	54.9	1.2	-0.3	3.1	3.1	-0.5	6.0	6.0
Employment	47.7	47.0	1.2	-0.7	4.1	4.1	-1.5	9.6	9.6
Unemployment	7.4	7.9	1.2	0.5	-1.0	-1.0	6.8	-11.2	-11.2
Participation rate	67.0	66.6	1.4	-0.4	4.6	4.6
Unemployment rate	13.4	14.4	2.1	1.0	-2.8	-2.8
Employment rate	57.9	57.0	1.4	-0.9	5.7	5.7
Part-time rate	41.5	39.4	2.9	-2.1	-4.9	-4.9
Men, 25 years and over									
Population	262.0	262.1	...	0.1	1.5	1.5	0.0	0.6	0.6
Labour force	174.4	174.9	1.3	0.5	2.0	2.0	0.3	1.2	1.2
Employment	155.6	155.2	1.5	-0.4	-1.5	-1.5	-0.3	-1.0	-1.0
Unemployment	18.8	19.7	1.4	0.9	3.5	3.5	4.8	21.6	21.6
Participation rate	66.6	66.7	0.5	0.1	0.4	0.4
Unemployment rate	10.8	11.3	0.8	0.5	1.9	1.9
Employment rate	59.4	59.2	0.6	-0.2	-0.9	-0.9
Part-time rate	6.7	6.8	0.7	0.1	0.9	0.9
Women, 25 years and over									
Population	279.3	279.4	...	0.1	1.8	1.8	0.0	0.6	0.6
Labour force	158.7	161.8	1.2	3.1	-0.8	-0.8	2.0	-0.5	-0.5
Employment	151.0	152.7	1.2	1.7	-0.5	-0.5	1.1	-0.3	-0.3
Unemployment	7.7	9.1	1.0	1.4	-0.3	-0.3	18.2	-3.2	-3.2
Participation rate	56.8	57.9	0.4	1.1	-0.7	-0.7
Unemployment rate	4.9	5.6	0.6	0.7	-0.2	-0.2
Employment rate	54.1	54.7	0.4	0.6	-0.5	-0.5
Part-time rate	17.5	17.6	1.0	0.1	2.5	2.5
Industry									
354.3	354.9	2.3	0.6	2.1	2.1	0.2	0.6	0.6	
Goods-producing sector									
72.0	72.5	1.5	0.5	-3.3	-3.3	0.7	-4.4	-4.4	
Agriculture	5.2	6.1	0.5	0.9	1.7	1.7	17.3	38.6	38.6
Forestry, fishing, mining, quarrying, oil and gas extraction ²	8.9	8.8	0.8	-0.1	-2.4	-2.4	-1.1	-21.4	-21.4
Utilities	4.1	4.1	0.2	0.0	0.4	0.4	0.0	10.8	10.8
Construction	23.9	22.7	1.0	-1.2	-3.9	-3.9	-5.0	-14.7	-14.7
Manufacturing	29.8	30.8	0.9	1.0	0.8	0.8	3.4	2.7	2.7
Services-producing sector									
282.3	282.5	2.1	0.2	5.5	5.5	0.1	2.0	2.0	
Wholesale and retail trade	59.2	58.4	1.1	-0.8	3.6	3.6	-1.4	6.6	6.6
Transportation and warehousing	17.7	17.6	0.7	-0.1	-2.9	-2.9	-0.6	-14.1	-14.1
Finance, insurance, real estate, rental and leasing	17.4	17.6	0.6	0.2	2.2	2.2	1.1	14.3	14.3
Professional, scientific and technical services	15.3	14.7	0.6	-0.6	0.1	0.1	-3.9	0.7	0.7
Business, building and other support services	15.2	14.9	0.8	-0.3	-2.9	-2.9	-2.0	-16.3	-16.3
Educational services	25.2	26.1	0.8	0.9	0.0	0.0	3.6	0.0	0.0
Health care and social assistance	54.5	55.4	0.9	0.9	2.7	2.7	1.7	5.1	5.1
Information, culture and recreation	12.6	13.0	0.6	0.4	1.2	1.2	3.2	10.2	10.2
Accommodation and food services	22.8	23.2	0.9	0.4	-0.8	-0.8	1.8	-3.3	-3.3
Other services (except public administration)	18.2	17.6	0.6	-0.6	2.6	2.6	-3.3	17.3	17.3
Public administration	24.2	23.9	0.6	-0.3	-0.4	-0.4	-1.2	-1.6	-1.6

1. Average standard error of change in two consecutive months (see "Sampling Errors" in Data Quality for further explanations).

2. Also referred to as Natural resources.

Note(s): Related CANSIM Tables 282-0087, 282-0088. The sum of individual categories may not always add to the total due to rounding.

Table 4-5
Selected labour force characteristics (seasonally adjusted) — Quebec

	November 2016	December 2016	S.E. ¹	Change from			Percent change from		
				last month	last December	twelve months ago	last month	last December	twelve months ago
in thousands (except rates)									
Both sexes, 15 years and over									
Population	6,904.6	6,905.9	...	1.3	43.7	43.7	0.0	0.6	0.6
Labour force	4,453.4	4,493.9	15.8	40.5	34.1	34.1	0.9	0.8	0.8
Employment	4,178.7	4,199.1	16.1	20.4	89.5	89.5	0.5	2.2	2.2
Employment full-time	3,349.8	3,395.9	21.8	46.1	85.4	85.4	1.4	2.6	2.6
Unemployment	274.8	294.8	13.9	20.0	-55.4	-55.4	7.3	-15.8	-15.8
Participation rate	64.5	65.1	0.2	0.6	0.1	0.1
Unemployment rate	6.2	6.6	0.3	0.4	-1.3	-1.3
Employment rate	60.5	60.8	0.2	0.3	0.9	0.9
Part-time rate	19.8	19.1	0.5	-0.7	-0.3	-0.3
Both sexes, 15 to 24 years									
Population	927.6	925.7	...	-1.9	-22.9	-22.9	-0.2	-2.4	-2.4
Labour force	623.3	634.9	8.8	11.6	-11.0	-11.0	1.9	-1.7	-1.7
Employment	548.3	563.6	8.4	15.3	1.3	1.3	2.8	0.2	0.2
Unemployment	75.1	71.3	7.7	-3.8	-12.2	-12.2	-5.1	-14.6	-14.6
Participation rate	67.2	68.6	0.9	1.4	0.5	0.5
Unemployment rate	12.0	11.2	1.1	-0.8	-1.7	-1.7
Employment rate	59.1	60.9	0.9	1.8	1.6	1.6
Part-time rate	56.3	54.9	1.8	-1.4	1.7	1.7
Men, 25 years and over									
Population	2,947.9	2,949.6	...	1.7	32.8	32.8	0.1	1.1	1.1
Labour force	2,022.1	2,042.2	8.6	20.1	3.2	3.2	1.0	0.2	0.2
Employment	1,904.0	1,905.5	9.5	1.5	21.2	21.2	0.1	1.1	1.1
Unemployment	118.1	136.7	8.7	18.6	-18.1	-18.1	15.7	-11.7	-11.7
Participation rate	68.6	69.2	0.3	0.6	-0.7	-0.7
Unemployment rate	5.8	6.7	0.4	0.9	-0.9	-0.9
Employment rate	64.6	64.6	0.3	0.0	0.0	0.0
Part-time rate	9.5	8.8	0.5	-0.7	0.0	0.0
Women, 25 years and over									
Population	3,029.1	3,030.7	...	1.6	33.9	33.9	0.1	1.1	1.1
Labour force	1,808.0	1,816.8	8.8	8.8	41.8	41.8	0.5	2.4	2.4
Employment	1,726.4	1,730.0	8.7	3.6	67.0	67.0	0.2	4.0	4.0
Unemployment	81.6	86.8	7.4	5.2	-25.1	-25.1	6.4	-22.4	-22.4
Participation rate	59.7	59.9	0.3	0.2	0.7	0.7
Unemployment rate	4.5	4.8	0.4	0.3	-1.5	-1.5
Employment rate	57.0	57.1	0.3	0.1	1.6	1.6
Part-time rate	19.6	18.8	0.7	-0.8	-1.3	-1.3
Industry									
	4,178.7	4,199.1	16.1	20.4	89.5	89.5	0.5	2.2	2.2
Goods-producing sector									
Agriculture	59.1	52.4	2.4	-6.7	-8.9	-8.9	-11.3	-14.5	-14.5
Forestry, fishing, mining, quarrying, oil and gas extraction ²	31.7	34.9	1.7	3.2	2.6	2.6	10.1	8.0	8.0
Utilities	26.6	27.7	1.4	1.1	1.2	1.2	4.1	4.5	4.5
Construction	240.3	234.6	5.8	-5.7	7.2	7.2	-2.4	3.2	3.2
Manufacturing	492.7	492.2	6.1	-0.5	1.5	1.5	-0.1	0.3	0.3
Services-producing sector									
Wholesale and retail trade	662.5	672.9	8.1	10.4	20.1	20.1	1.6	3.1	3.1
Transportation and warehousing	199.3	196.4	4.2	-2.9	-0.4	-0.4	-1.5	-0.2	-0.2
Finance, insurance, real estate, rental and leasing	224.3	223.6	4.0	-0.7	13.5	13.5	-0.3	6.4	6.4
Professional, scientific and technical services	303.3	311.7	5.9	8.4	-12.2	-12.2	2.8	-3.8	-3.8
Business, building and other support services	178.0	171.8	5.3	-6.2	-4.9	-4.9	-3.5	-2.8	-2.8
Educational services	290.0	300.4	5.5	10.4	28.0	28.0	3.6	10.3	10.3
Health care and social assistance	575.9	573.1	6.4	-2.8	-10.3	-10.3	-0.5	-1.8	-1.8
Information, culture and recreation	185.1	196.4	5.5	11.3	24.4	24.4	6.1	14.2	14.2
Accommodation and food services	283.4	276.4	6.1	-7.0	-4.5	-4.5	-2.5	-1.6	-1.6
Other services (except public administration)	177.0	180.7	4.3	3.7	20.0	20.0	2.1	12.4	12.4
Public administration	249.3	253.8	4.1	4.5	12.1	12.1	1.8	5.0	5.0

1. Average standard error of change in two consecutive months (see "Sampling Errors" in Data Quality for further explanations).

2. Also referred to as Natural resources.

Note(s): Related CANSIM Tables 282-0087, 282-0088. The sum of individual categories may not always add to the total due to rounding.

Table 4-6
Selected labour force characteristics (seasonally adjusted) — Ontario

	November 2016	December 2016	S.E.	Change from			Percent change from		
				last month	last December	twelve months ago	last month	last December	twelve months ago
in thousands (except rates)									
Both sexes, 15 years and over									
Population	11,581.3	11,591.4	...	10.1	146.9	146.9	0.1	1.3	1.3
Labour force	7,508.5	7,527.6	20.5	19.1	61.4	61.4	0.3	0.8	0.8
Employment	7,037.6	7,046.7	19.5	9.1	80.6	80.6	0.1	1.2	1.2
Employment full-time	5,670.7	5,690.8	26.9	20.1	6.8	6.8	0.4	0.1	0.1
Unemployment	471.0	481.0	16.7	10.0	-19.1	-19.1	2.1	-3.8	-3.8
Participation rate	64.8	64.9	0.2	0.1	-0.3	-0.3
Unemployment rate	6.3	6.4	0.2	0.1	-0.3	-0.3
Employment rate	60.8	60.8	0.2	0.0	-0.1	-0.1
Part-time rate	19.4	19.2	0.4	-0.2	0.8	0.8
Both sexes, 15 to 24 years									
Population	1,782.9	1,782.7	...	-0.2	-8.4	-8.4	0.0	-0.5	-0.5
Labour force	1,088.3	1,082.1	12.4	-6.2	13.7	13.7	-0.6	1.3	1.3
Employment	940.9	927.9	11.2	-13.0	6.1	6.1	-1.4	0.7	0.7
Unemployment	147.3	154.3	10.0	7.0	7.7	7.7	4.8	5.3	5.3
Participation rate	61.0	60.7	0.7	-0.3	1.0	1.0
Unemployment rate	13.5	14.3	0.9	0.8	0.6	0.6
Employment rate	52.8	52.1	0.6	-0.7	0.6	0.6
Part-time rate	50.0	48.6	1.4	-1.4	0.3	0.3
Men, 25 years and over									
Population	4,728.9	4,734.2	...	5.3	77.8	77.8	0.1	1.7	1.7
Labour force	3,363.8	3,366.5	10.1	2.7	9.8	9.8	0.1	0.3	0.3
Employment	3,187.7	3,202.2	10.3	14.5	37.0	37.0	0.5	1.2	1.2
Unemployment	176.1	164.3	9.2	-11.8	-27.2	-27.2	-6.7	-14.2	-14.2
Participation rate	71.1	71.1	0.2	0.0	-1.0	-1.0
Unemployment rate	5.2	4.9	0.3	-0.3	-0.8	-0.8
Employment rate	67.4	67.6	0.2	0.2	-0.4	-0.4
Part-time rate	9.0	9.0	0.4	0.0	1.2	1.2
Women, 25 years and over									
Population	5,069.5	5,074.5	...	5.0	77.6	77.6	0.1	1.6	1.6
Labour force	3,056.5	3,079.0	11.8	22.5	37.9	37.9	0.7	1.2	1.2
Employment	2,908.9	2,916.6	11.5	7.7	37.5	37.5	0.3	1.3	1.3
Unemployment	147.6	162.4	9.4	14.8	0.4	0.4	10.0	0.2	0.2
Participation rate	60.3	60.7	0.2	0.4	-0.2	-0.2
Unemployment rate	4.8	5.3	0.3	0.5	0.0	0.0
Employment rate	57.4	57.5	0.2	0.1	-0.1	-0.1
Part-time rate	21.0	21.2	0.6	0.2	0.6	0.6
Industry									
	7,037.6	7,046.7	19.5	9.1	80.6	80.6	0.1	1.2	1.2
Goods-producing sector									
	1,412.5	1,423.3	10.4	10.8	5.0	5.0	0.8	0.4	0.4
Agriculture	73.1	71.9	2.9	-1.2	-4.5	-4.5	-1.6	-5.9	-5.9
Forestry, fishing, mining, quarrying, oil and gas extraction ²	33.8	34.2	1.9	0.4	-9.3	-9.3	1.2	-21.4	-21.4
Utilities	50.4	51.3	1.8	0.9	5.7	5.7	1.8	12.5	12.5
Construction	512.3	520.3	6.9	8.0	24.3	24.3	1.6	4.9	4.9
Manufacturing	742.8	745.6	7.3	2.8	-11.3	-11.3	0.4	-1.5	-1.5
Services-producing sector									
	5,625.1	5,623.3	18.8	-1.8	75.6	75.6	0.0	1.4	1.4
Wholesale and retail trade	1,023.3	1,025.0	9.8	1.7	-7.8	-7.8	0.2	-0.8	-0.8
Transportation and warehousing	326.5	324.3	5.2	-2.2	-1.2	-1.2	-0.7	-0.4	-0.4
Finance, insurance, real estate, rental and leasing	561.5	562.4	6.4	0.9	5.0	5.0	0.2	0.9	0.9
Professional, scientific and technical services	592.4	606.5	7.7	14.1	10.4	10.4	2.4	1.7	1.7
Business, building and other support services	326.6	328.2	7.4	1.6	2.3	2.3	0.5	0.7	0.7
Educational services	506.0	499.8	7.0	-6.2	-7.6	-7.6	-1.2	-1.5	-1.5
Health care and social assistance	843.5	850.7	7.3	7.2	21.6	21.6	0.9	2.6	2.6
Information, culture and recreation	327.6	323.7	6.6	-3.9	24.5	24.5	-1.2	8.2	8.2
Accommodation and food services	467.4	459.7	7.8	-7.7	15.4	15.4	-1.6	3.5	3.5
Other services (except public administration)	285.9	281.7	5.2	-4.2	1.3	1.3	-1.5	0.5	0.5
Public administration	364.2	361.3	4.9	-2.9	11.8	11.8	-0.8	3.4	3.4

1. Average standard error of change in two consecutive months (see "Sampling Errors" in Data Quality for further explanations).

2. Also referred to as Natural resources.

Note(s): Related CANSIM Tables 282-0087, 282-0088. The sum of individual categories may not always add to the total due to rounding.

Table 4-7
Selected labour force characteristics (seasonally adjusted) — Manitoba

	November 2016	December 2016	S.E. ¹	Change from			Percent change from		
				last month	last December	twelve months ago	last month	last December	twelve months ago
in thousands (except rates)									
Both sexes, 15 years and over									
Population	1,003.6	1,004.4	...	0.8	12.5	12.5	0.1	1.3	1.3
Labour force	673.3	675.4	2.6	2.1	1.2	1.2	0.3	0.2	0.2
Employment	631.8	633.0	2.6	1.2	-1.0	-1.0	0.2	-0.2	-0.2
Employment full-time	504.4	509.4	3.6	5.0	2.9	2.9	1.0	0.6	0.6
Unemployment	41.5	42.4	2.1	0.9	2.3	2.3	2.2	5.7	5.7
Participation rate	67.1	67.2	0.3	0.1	-0.8	-0.8
Unemployment rate	6.2	6.3	0.3	0.1	0.4	0.4
Employment rate	63.0	63.0	0.3	0.0	-0.9	-0.9
Part-time rate	20.1	19.5	0.5	-0.6	-0.6	-0.6
Both sexes, 15 to 24 years									
Population	163.4	163.5	...	0.1	0.6	0.6	0.1	0.4	0.4
Labour force	108.0	109.7	1.6	1.7	2.8	2.8	1.6	2.6	2.6
Employment	93.7	95.3	1.5	1.6	2.0	2.0	1.7	2.1	2.1
Unemployment	14.3	14.4	1.3	0.1	0.8	0.8	0.7	5.9	5.9
Participation rate	66.1	67.1	1.0	1.0	1.5	1.5
Unemployment rate	13.2	13.1	1.2	-0.1	0.4	0.4
Employment rate	57.3	58.3	0.9	1.0	1.0	1.0
Part-time rate	45.0	44.7	1.8	-0.3	-1.8	-1.8
Men, 25 years and over									
Population	411.8	412.2	...	0.4	5.7	5.7	0.1	1.4	1.4
Labour force	303.5	302.3	1.3	-1.2	1.7	1.7	-0.4	0.6	0.6
Employment	287.0	286.6	1.4	-0.4	-0.1	-0.1	-0.1	0.0	0.0
Unemployment	16.5	15.7	1.2	-0.8	1.8	1.8	-4.8	12.9	12.9
Participation rate	73.7	73.3	0.3	-0.4	-0.6	-0.6
Unemployment rate	5.4	5.2	0.4	-0.2	0.6	0.6
Employment rate	69.7	69.5	0.3	-0.2	-1.0	-1.0
Part-time rate	9.3	8.8	0.5	-0.5	1.1	1.1
Women, 25 years and over									
Population	428.4	428.7	...	0.3	6.1	6.1	0.1	1.4	1.4
Labour force	261.8	263.4	1.5	1.6	-3.3	-3.3	0.6	-1.2	-1.2
Employment	251.1	251.2	1.5	0.1	-2.8	-2.8	0.0	-1.1	-1.1
Unemployment	10.7	12.2	1.1	1.5	-0.5	-0.5	14.0	-3.9	-3.9
Participation rate	61.1	61.4	0.4	0.3	-1.7	-1.7
Unemployment rate	4.1	4.6	0.4	0.5	-0.2	-0.2
Employment rate	58.6	58.6	0.4	0.0	-1.5	-1.5
Part-time rate	23.2	22.3	0.9	-1.0	-2.2	-2.2
Industry									
	631.8	633.0	2.6	1.2	-1.0	-1.0	0.2	-0.2	-0.2
Goods-producing sector									
Agriculture	24.9	23.3	0.9	-1.6	-1.3	-1.3	-6.4	-5.3	-5.3
Forestry, fishing, mining, quarrying, oil and gas extraction ²	6.5	6.5	0.4	0.0	0.3	0.3	0.0	4.8	4.8
Utilities	9.8	9.9	0.3	0.1	1.2	1.2	1.0	13.8	13.8
Construction	47.1	45.6	1.1	-1.5	-0.6	-0.6	-3.2	-1.3	-1.3
Manufacturing	64.6	64.1	0.9	-0.5	-0.3	-0.3	-0.8	-0.5	-0.5
Services-producing sector									
	478.9	483.6	2.4	4.7	-0.4	-0.4	1.0	-0.1	-0.1
Wholesale and retail trade	87.7	87.3	1.2	-0.4	-2.0	-2.0	-0.5	-2.2	-2.2
Transportation and warehousing	35.5	35.6	0.8	0.1	-1.0	-1.0	0.3	-2.7	-2.7
Finance, insurance, real estate, rental and leasing	35.7	36.1	0.7	0.4	4.1	4.1	1.1	12.8	12.8
Professional, scientific and technical services	27.8	27.5	0.7	-0.3	1.8	1.8	-1.1	7.0	7.0
Business, building and other support services	18.6	19.2	0.8	0.6	-0.5	-0.5	3.2	-2.5	-2.5
Educational services	48.1	49.7	1.0	1.6	-2.6	-2.6	3.3	-5.0	-5.0
Health care and social assistance	100.4	102.1	1.2	1.7	0.0	0.0	1.7	0.0	0.0
Information, culture and recreation	23.6	24.7	0.9	1.1	2.3	2.3	4.7	10.3	10.3
Accommodation and food services	40.5	39.9	1.0	-0.6	-1.5	-1.5	-1.5	-3.6	-3.6
Other services (except public administration)	27.1	27.9	0.8	0.8	-0.9	-0.9	3.0	-3.1	-3.1
Public administration	33.7	33.6	0.7	-0.1	-0.2	-0.2	-0.3	-0.6	-0.6

1. Average standard error of change in two consecutive months (see "Sampling Errors" in Data Quality for further explanations).

2. Also referred to as Natural resources.

Note(s): Related CANSIM Tables 282-0087, 282-0088. The sum of individual categories may not always add to the total due to rounding.

Table 4-8
Selected labour force characteristics (seasonally adjusted) — Saskatchewan

	November 2016	December 2016	S.E. ¹	Change from			Percent change from		
				last month	last December	twelve months ago	last month	last December	twelve months ago
in thousands (except rates)									
Both sexes, 15 years and over									
Population	871.9	872.5	...	0.6	7.5	7.5	0.1	0.9	0.9
Labour force	610.9	607.7	2.6	-3.2	-0.9	-0.9	-0.5	-0.1	-0.1
Employment	569.3	568.2	2.6	-1.1	-6.9	-6.9	-0.2	-1.2	-1.2
Employment full-time	469.1	466.5	3.5	-2.6	-12.4	-12.4	-0.6	-2.6	-2.6
Unemployment	41.6	39.5	2.2	-2.1	5.9	5.9	-5.0	17.6	17.6
Participation rate	70.1	69.7	0.3	-0.4	-0.7	-0.7
Unemployment rate	6.8	6.5	0.3	-0.3	1.0	1.0
Employment rate	65.3	65.1	0.3	-0.2	-1.4	-1.4
Part-time rate	17.6	17.9	0.5	0.3	1.2	1.2
Both sexes, 15 to 24 years									
Population	134.3	134.3	...	0.0	-1.4	-1.4	0.0	-1.0	-1.0
Labour force	89.7	86.8	1.4	-2.9	-5.2	-5.2	-3.2	-5.7	-5.7
Employment	78.1	77.9	1.4	-0.2	-4.8	-4.8	-0.3	-5.8	-5.8
Unemployment	11.7	8.9	1.2	-2.8	-0.4	-0.4	-23.9	-4.3	-4.3
Participation rate	66.8	64.6	1.0	-2.2	-3.2	-3.2
Unemployment rate	13.0	10.3	1.3	-2.7	0.2	0.2
Employment rate	58.2	58.0	1.0	-0.2	-2.9	-2.9
Part-time rate	41.2	39.2	1.9	-2.1	4.9	4.9
Men, 25 years and over									
Population	369.1	369.4	...	0.3	4.2	4.2	0.1	1.2	1.2
Labour force	288.0	286.6	1.4	-1.4	3.8	3.8	-0.5	1.3	1.3
Employment	269.6	268.2	1.5	-1.4	0.4	0.4	-0.5	0.1	0.1
Unemployment	18.5	18.4	1.3	-0.1	3.4	3.4	-0.5	22.7	22.7
Participation rate	78.0	77.6	0.4	-0.4	0.2	0.2
Unemployment rate	6.4	6.4	0.4	0.0	1.1	1.1
Employment rate	73.0	72.6	0.4	-0.4	-0.7	-0.7
Part-time rate	6.7	6.9	0.6	0.2	0.1	0.1
Women, 25 years and over									
Population	368.4	368.8	...	0.4	4.6	4.6	0.1	1.3	1.3
Labour force	233.1	234.3	1.4	1.2	0.4	0.4	0.5	0.2	0.2
Employment	221.6	222.1	1.5	0.5	-2.5	-2.5	0.2	-1.1	-1.1
Unemployment	11.4	12.2	1.1	0.8	2.9	2.9	7.0	31.2	31.2
Participation rate	63.3	63.5	0.4	0.2	-0.7	-0.7
Unemployment rate	4.9	5.2	0.5	0.3	1.2	1.2
Employment rate	60.2	60.2	0.4	0.0	-1.5	-1.5
Part-time rate	22.5	23.7	0.9	1.2	1.6	1.6
Industry									
	569.3	568.2	2.6	-1.1	-6.9	-6.9	-0.2	-1.2	-1.2
Goods-producing sector									
Agriculture	39.6	39.8	1.2	0.2	-2.3	-2.3	0.5	-5.5	-5.5
Forestry, fishing, mining, quarrying, oil and gas extraction ²	24.8	24.9	0.7	0.1	-1.4	-1.4	0.4	-5.3	-5.3
Utilities	6.8	6.8	0.3	0.0	0.5	0.5	0.0	7.9	7.9
Construction	49.7	50.9	1.2	1.2	-4.9	-4.9	2.4	-8.8	-8.8
Manufacturing	26.6	27.1	0.7	0.5	0.5	0.5	1.9	1.9	1.9
Services-producing sector									
	421.7	418.7	2.4	-3.0	0.7	0.7	-0.7	0.2	0.2
Wholesale and retail trade	90.6	90.8	1.3	0.2	5.4	5.4	0.2	6.3	6.3
Transportation and warehousing	29.0	28.4	0.8	-0.6	-1.6	-1.6	-2.1	-5.3	-5.3
Finance, insurance, real estate, rental and leasing	27.0	26.8	0.6	-0.2	-4.3	-4.3	-0.7	-13.8	-13.8
Professional, scientific and technical services	29.9	31.0	0.7	1.1	4.2	4.2	3.7	15.7	15.7
Business, building and other support services	13.3	13.1	0.7	-0.2	-0.8	-0.8	-1.5	-5.8	-5.8
Educational services	40.8	40.9	1.0	0.1	-0.6	-0.6	0.2	-1.4	-1.4
Health care and social assistance	77.7	77.0	1.1	-0.7	-1.8	-1.8	-0.9	-2.3	-2.3
Information, culture and recreation	20.6	20.6	0.8	0.0	0.0	0.0	0.0	0.0	0.0
Accommodation and food services	38.3	36.6	1.0	-1.7	-1.6	-1.6	-4.4	-4.2	-4.2
Other services (except public administration)	23.9	23.5	0.8	-0.4	-0.5	-0.5	-1.7	-2.1	-2.1
Public administration	30.7	29.9	0.7	-0.8	2.4	2.4	-2.6	8.7	8.7

1. Average standard error of change in two consecutive months (see "Sampling Errors" in Data Quality for further explanations).

2. Also referred to as Natural resources.

Note(s): Related CANSIM Tables 282-0087, 282-0088. The sum of individual categories may not always add to the total due to rounding.

Table 4-9
Selected labour force characteristics (seasonally adjusted) — Alberta

	November 2016	December 2016	S.E.	Change from			Percent change from		
				last month	last December	twelve months ago	last month	last December	twelve months ago
in thousands (except rates)									
Both sexes, 15 years and over									
Population	3,408.3	3,409.6	...	1.3	30.6	30.6	0.0	0.9	0.9
Labour force	2,483.1	2,478.3	9.6	-4.8	21.2	21.2	-0.2	0.9	0.9
Employment	2,260.4	2,267.3	9.7	6.9	-18.8	-18.8	0.3	-0.8	-0.8
Employment full-time	1,827.6	1,846.1	13.6	18.5	-34.8	-34.8	1.0	-1.9	-1.9
Unemployment	222.8	211.0	8.2	-11.8	40.0	40.0	-5.3	23.4	23.4
Participation rate	72.9	72.7	0.3	-0.2	0.0	0.0
Unemployment rate	9.0	8.5	0.3	-0.5	1.5	1.5
Employment rate	66.3	66.5	0.3	0.2	-1.2	-1.2
Part-time rate	19.1	18.6	0.5	-0.6	0.9	0.9
Both sexes, 15 to 24 years									
Population	513.5	512.8	...	-0.7	-8.1	-8.1	-0.1	-1.6	-1.6
Labour force	352.6	347.2	5.3	-5.4	-0.8	-0.8	-1.5	-0.2	-0.2
Employment	305.0	303.7	5.1	-1.3	-5.7	-5.7	-0.4	-1.8	-1.8
Unemployment	47.6	43.4	4.6	-4.2	4.8	4.8	-8.8	12.4	12.4
Participation rate	68.7	67.7	1.0	-1.0	0.9	0.9
Unemployment rate	13.5	12.5	1.2	-1.0	1.4	1.4
Employment rate	59.4	59.2	1.0	-0.2	-0.2	-0.2
Part-time rate	43.5	41.7	2.0	-1.8	-0.8	-0.8
Men, 25 years and over									
Population	1,462.3	1,463.0	...	0.7	17.3	17.3	0.0	1.2	1.2
Labour force	1,183.7	1,179.2	5.2	-4.5	14.3	14.3	-0.4	1.2	1.2
Employment	1,072.3	1,078.1	6.0	5.8	-5.5	-5.5	0.5	-0.5	-0.5
Unemployment	111.4	101.2	5.3	-10.2	19.9	19.9	-9.2	24.5	24.5
Participation rate	80.9	80.6	0.4	-0.3	0.0	0.0
Unemployment rate	9.4	8.6	0.4	-0.8	1.6	1.6
Employment rate	73.3	73.7	0.4	0.4	-1.3	-1.3
Part-time rate	8.3	7.9	0.5	-0.4	1.0	1.0
Women, 25 years and over									
Population	1,432.5	1,433.8	...	1.3	21.5	21.5	0.1	1.5	1.5
Labour force	946.9	951.9	5.8	5.0	7.7	7.7	0.5	0.8	0.8
Employment	883.1	885.5	5.8	2.4	-7.6	-7.6	0.3	-0.9	-0.9
Unemployment	63.8	66.4	4.5	2.6	15.3	15.3	4.1	29.9	29.9
Participation rate	66.1	66.4	0.4	0.3	-0.5	-0.5
Unemployment rate	6.7	7.0	0.5	0.3	1.6	1.6
Employment rate	61.6	61.8	0.4	0.2	-1.4	-1.4
Part-time rate	23.9	23.7	0.9	-0.3	1.4	1.4
Industry	2,260.4	2,267.3	9.7	6.9	-18.8	-18.8	0.3	-0.8	-0.8
Goods-producing sector	565.1	570.2	6.7	5.1	-52.9	-52.9	0.9	-8.5	-8.5
Agriculture	51.7	51.4	2.6	-0.3	-6.6	-6.6	-0.6	-11.4	-11.4
Forestry, fishing, mining, quarrying, oil and gas extraction ²	142.2	140.6	3.5	-1.6	-11.2	-11.2	-1.1	-7.4	-7.4
Utilities	18.5	21.1	1.0	2.6	1.7	1.7	14.1	8.8	8.8
Construction	240.2	247.5	4.9	7.3	-8.7	-8.7	3.0	-3.4	-3.4
Manufacturing	112.4	109.6	3.1	-2.8	-28.1	-28.1	-2.5	-20.4	-20.4
Services-producing sector	1,695.3	1,697.1	9.0	1.8	34.1	34.1	0.1	2.1	2.1
Wholesale and retail trade	339.3	325.3	4.9	-14.0	1.4	1.4	-4.1	0.4	0.4
Transportation and warehousing	132.2	134.0	2.9	1.8	6.5	6.5	1.4	5.1	5.1
Finance, insurance, real estate, rental and leasing	103.6	102.0	2.5	-1.6	0.0	0.0	-1.5	0.0	0.0
Professional, scientific and technical services	178.5	182.0	3.8	3.5	1.9	1.9	2.0	1.1	1.1
Business, building and other support services	75.9	77.7	3.0	1.8	-4.6	-4.6	2.4	-5.6	-5.6
Educational services	153.5	152.3	3.3	-1.2	4.2	4.2	-0.8	2.8	2.8
Health care and social assistance	268.0	276.7	3.6	8.7	8.6	8.6	3.2	3.2	3.2
Information, culture and recreation	72.3	72.9	3.3	0.6	-10.1	-10.1	0.8	-12.2	-12.2
Accommodation and food services	148.4	147.0	3.9	-1.4	6.2	6.2	-0.9	4.4	4.4
Other services (except public administration)	124.1	124.9	3.1	0.8	14.6	14.6	0.6	13.2	13.2
Public administration	99.5	102.5	2.3	3.0	5.7	5.7	3.0	5.9	5.9

1. Average standard error of change in two consecutive months (see "Sampling Errors" in Data Quality for further explanations).

2. Also referred to as Natural resources.

Note(s): Related CANSIM Tables 282-0087, 282-0088. The sum of individual categories may not always add to the total due to rounding.

Table 4-10
Selected labour force characteristics (seasonally adjusted) — British Columbia

	November 2016	December 2016	S.E.	Change from			Percent change from		
				last month	last December	twelve months ago	last month	last December	twelve months ago
in thousands (except rates)									
Both sexes, 15 years and over									
Population	3,950.0	3,952.8	...	2.8	49.6	49.6	0.1	1.3	1.3
Labour force	2,546.6	2,555.7	10.8	9.1	52.5	52.5	0.4	2.1	2.1
Employment	2,391.1	2,408.1	10.7	17.0	72.4	72.4	0.7	3.1	3.1
Employment full-time	1,865.7	1,867.8	15.1	2.1	35.9	35.9	0.1	2.0	2.0
Unemployment	155.4	147.6	8.9	-7.8	-19.9	-19.9	-5.0	-11.9	-11.9
Participation rate	64.5	64.7	0.3	0.2	0.6	0.6
Unemployment rate	6.1	5.8	0.3	-0.3	-0.9	-0.9
Employment rate	60.5	60.9	0.3	0.4	1.1	1.1
Part-time rate	22.0	22.4	0.6	0.5	0.9	0.9
Both sexes, 15 to 24 years									
Population	583.2	582.9	...	-0.3	-1.8	-1.8	-0.1	-0.3	-0.3
Labour force	370.4	371.2	6.1	0.8	-3.0	-3.0	0.2	-0.8	-0.8
Employment	331.2	339.5	6.0	8.3	11.7	11.7	2.5	3.6	3.6
Unemployment	39.2	31.7	5.3	-7.5	-14.7	-14.7	-19.1	-31.7	-31.7
Participation rate	63.5	63.7	1.0	0.2	-0.3	-0.3
Unemployment rate	10.6	8.5	1.4	-2.1	-3.9	-3.9
Employment rate	56.8	58.2	1.0	1.4	2.1	2.1
Part-time rate	50.0	52.3	2.2	2.3	9.2	9.2
Men, 25 years and over									
Population	1,642.6	1,644.1	...	1.5	24.8	24.8	0.1	1.5	1.5
Labour force	1,141.1	1,141.2	5.9	0.1	16.1	16.1	0.0	1.4	1.4
Employment	1,077.5	1,077.4	6.0	-0.1	20.6	20.6	0.0	1.9	1.9
Unemployment	63.5	63.8	5.2	0.3	-4.6	-4.6	0.5	-6.7	-6.7
Participation rate	69.5	69.4	0.4	-0.1	-0.1	-0.1
Unemployment rate	5.6	5.6	0.4	0.0	-0.5	-0.5
Employment rate	65.6	65.5	0.4	-0.1	0.2	0.2
Part-time rate	9.7	10.0	0.6	0.3	0.8	0.8
Women, 25 years and over									
Population	1,724.2	1,725.9	...	1.7	26.8	26.8	0.1	1.6	1.6
Labour force	1,035.1	1,043.3	6.3	8.2	39.5	39.5	0.8	3.9	3.9
Employment	982.4	991.3	6.1	8.9	40.2	40.2	0.9	4.2	4.2
Unemployment	52.7	52.0	4.9	-0.7	-0.7	-0.7	-1.3	-1.3	-1.3
Participation rate	60.0	60.4	0.4	0.4	1.3	1.3
Unemployment rate	5.1	5.0	0.5	-0.1	-0.3	-0.3
Employment rate	57.0	57.4	0.4	0.4	1.4	1.4
Part-time rate	26.0	25.7	1.0	-0.3	-2.1	-2.1
Industry									
	2,391.1	2,408.1	10.7	17.0	72.4	72.4	0.7	3.1	3.1
Goods-producing sector									
	476.9	475.7	6.5	-1.2	5.6	5.6	-0.3	1.2	1.2
Agriculture	26.3	29.7	2.6	3.4	9.4	9.4	12.9	46.3	46.3
Forestry, fishing, mining, quarrying, oil and gas extraction ²	50.8	47.0	2.5	-3.8	-4.3	-4.3	-7.5	-8.4	-8.4
Utilities	13.5	13.2	0.8	-0.3	-2.3	-2.3	-2.2	-14.8	-14.8
Construction	218.2	215.5	4.5	-2.7	13.5	13.5	-1.2	6.7	6.7
Manufacturing	168.2	170.3	3.7	2.1	-10.7	-10.7	1.2	-5.9	-5.9
Services-producing sector									
	1,914.2	1,932.5	10.6	18.3	66.9	66.9	1.0	3.6	3.6
Wholesale and retail trade	365.2	375.0	5.8	9.8	14.6	14.6	2.7	4.1	4.1
Transportation and warehousing	139.9	143.4	3.6	3.5	3.4	3.4	2.5	2.4	2.4
Finance, insurance, real estate, rental and leasing	143.9	144.2	3.2	0.3	20.7	20.7	0.2	16.8	16.8
Professional, scientific and technical services	194.9	193.5	4.2	-1.4	4.3	4.3	-0.7	2.3	2.3
Business, building and other support services	107.2	98.6	3.8	-8.6	3.4	3.4	-8.0	3.6	3.6
Educational services	158.0	160.0	3.9	2.0	-7.1	-7.1	1.3	-4.2	-4.2
Health care and social assistance	292.5	292.9	4.5	0.4	-2.5	-2.5	0.1	-0.8	-0.8
Information, culture and recreation	127.1	125.7	3.9	-1.4	6.1	6.1	-1.1	5.1	5.1
Accommodation and food services	175.8	187.4	4.7	11.6	18.4	18.4	6.6	10.9	10.9
Other services (except public administration)	106.2	110.3	3.1	4.1	2.1	2.1	3.9	1.9	1.9
Public administration	103.4	101.5	2.5	-1.9	3.3	3.3	-1.8	3.4	3.4

1. Average standard error of change in two consecutive months (see "Sampling Errors" in Data Quality for further explanations).

2. Also referred to as Natural resources.

Note(s): Related CANSIM Tables 282-0087, 282-0088. The sum of individual categories may not always add to the total due to rounding.

Table 5-1

Labour force characteristics by census metropolitan area (seasonally adjusted) — 3 month moving average

	November 2016	December 2016	S.E.	Change from			Percent change from		
				last month	last December	twelve months ago	last month	last December	twelve months ago
in thousands (except rates)									
St. John's, Newfoundland and Labrador									
Population	182.4	182.5	...	0.1	3.0	3.0	0.1	1.7	1.7
Labour force	127.5	126.6	0.9	-0.9	4.3	4.3	-0.7	3.5	3.5
Employment	115.8	114.1	1.0	-1.7	-0.3	-0.3	-1.5	-0.3	-0.3
Unemployment	11.7	12.5	0.5	0.8	4.7	4.7	6.8	60.3	60.3
Participation rate	69.9	69.4	0.5	-0.5	1.3	1.3
Unemployment rate	9.2	9.9	0.4	0.7	3.5	3.5
Employment rate	63.5	62.5	0.5	-1.0	-1.2	-1.2
Halifax, Nova Scotia									
Population	355.4	355.8	...	0.4	5.2	5.2	0.1	1.5	1.5
Labour force	240.5	240.6	1.3	0.1	2.5	2.5	0.0	1.0	1.0
Employment	226.3	226.0	1.3	-0.3	2.6	2.6	-0.1	1.2	1.2
Unemployment	14.2	14.6	0.7	0.4	-0.1	-0.1	2.8	-0.7	-0.7
Participation rate	67.7	67.6	0.4	-0.1	-0.3	-0.3
Unemployment rate	5.9	6.1	0.3	0.2	-0.1	-0.1
Employment rate	63.7	63.5	0.4	-0.2	-0.2	-0.2
Moncton, New Brunswick									
Population	126.1	126.3	...	0.2	2.0	2.0	0.2	1.6	1.6
Labour force	83.5	83.2	0.8	-0.3	-1.1	-1.1	-0.4	-1.3	-1.3
Employment	77.4	76.8	0.8	-0.6	-2.3	-2.3	-0.8	-2.9	-2.9
Unemployment	6.1	6.5	0.4	0.4	1.3	1.3	6.6	25.0	25.0
Participation rate	66.2	65.9	0.7	-0.3	-1.9	-1.9
Unemployment rate	7.3	7.8	0.5	0.5	1.6	1.6
Employment rate	61.4	60.8	0.7	-0.6	-2.8	-2.8
Saint John, New Brunswick									
Population	105.4	105.4	...	0.0	0.0	0.0	0.0	0.0	0.0
Labour force	69.7	71.3	0.8	1.6	3.8	3.8	2.3	5.6	5.6
Employment	64.4	65.5	0.7	1.1	3.3	3.3	1.7	5.3	5.3
Unemployment	5.3	5.8	0.4	0.5	0.5	0.5	9.4	9.4	9.4
Participation rate	66.1	67.6	0.7	1.5	3.6	3.6
Unemployment rate	7.6	8.1	0.6	0.5	0.2	0.2
Employment rate	61.1	62.1	0.7	1.0	3.1	3.1
Saguenay, Quebec									
Population	135.0	135.0	...	0.0	-0.1	-0.1	0.0	-0.1	-0.1
Labour force	79.3	78.3	0.9	-1.0	-3.9	-3.9	-1.3	-4.7	-4.7
Employment	73.7	72.6	0.9	-1.1	-3.5	-3.5	-1.5	-4.6	-4.6
Unemployment	5.5	5.7	0.4	0.2	-0.4	-0.4	3.6	-6.6	-6.6
Participation rate	58.7	58.0	0.6	-0.7	-2.8	-2.8
Unemployment rate	6.9	7.3	0.5	0.4	-0.1	-0.1
Employment rate	54.6	53.8	0.7	-0.8	-2.5	-2.5
Québec, Quebec									
Population	677.2	677.5	...	0.3	5.4	5.4	0.0	0.8	0.8
Labour force	466.5	465.6	3.5	-0.9	-2.5	-2.5	-0.2	-0.5	-0.5
Employment	446.1	445.1	3.5	-1.0	-0.2	-0.2	-0.2	0.0	0.0
Unemployment	20.5	20.4	1.4	-0.1	-2.4	-2.4	-0.5	-10.5	-10.5
Participation rate	68.9	68.7	0.5	-0.2	-0.9	-0.9
Unemployment rate	4.4	4.4	0.3	0.0	-0.5	-0.5
Employment rate	65.9	65.7	0.5	-0.2	-0.6	-0.6
Sherbrooke, Quebec									
Population	182.0	182.2	...	0.2	2.1	2.1	0.1	1.2	1.2
Labour force	113.5	114.2	1.1	0.7	1.2	1.2	0.6	1.1	1.1
Employment	106.9	107.9	1.1	1.0	2.4	2.4	0.9	2.3	2.3
Unemployment	6.6	6.3	0.5	-0.3	-1.2	-1.2	-4.5	-16.0	-16.0
Participation rate	62.4	62.7	0.6	0.3	0.0	0.0
Unemployment rate	5.8	5.5	0.4	-0.3	-1.1	-1.1
Employment rate	58.7	59.2	0.6	0.5	0.6	0.6

See notes at the end of the table.

Table 5-1 – continued

Labour force characteristics by census metropolitan area (seasonally adjusted) — 3 month moving average

	November 2016	December 2016	S.E. ¹	Change from			Percent change from		
				last month	last December	twelve months ago	last month	last December	twelve months ago
in thousands (except rates)									
Trois-Rivières, Quebec									
Population	133.4	133.5	...	0.1	0.6	0.6	0.1	0.5	0.5
Labour force	80.8	81.0	0.9	0.2	0.2	0.2	0.2	0.2	0.2
Employment	75.0	75.1	0.9	0.1	0.2	0.2	0.1	0.3	0.3
Unemployment	5.8	5.9	0.4	0.1	0.0	0.0	1.7	0.0	0.0
Participation rate	60.6	60.7	0.7	0.1	-0.1	-0.1
Unemployment rate	7.2	7.3	0.4	0.1	0.0	0.0
Employment rate	56.2	56.3	0.7	0.1	-0.1	-0.1
Montréal, Quebec									
Population	3,398.3	3,400.3	...	2.0	33.9	33.9	0.1	1.0	1.0
Labour force	2,259.7	2,263.3	8.5	3.6	30.5	30.5	0.2	1.4	1.4
Employment	2,105.4	2,112.2	8.6	6.8	73.4	73.4	0.3	3.6	3.6
Unemployment	154.3	151.1	5.3	-3.2	-42.9	-42.9	-2.1	-22.1	-22.1
Participation rate	66.5	66.6	0.3	0.1	0.3	0.3
Unemployment rate	6.8	6.7	0.2	-0.1	-2.0	-2.0
Employment rate	62.0	62.1	0.3	0.1	1.5	1.5
Ottawa-Gatineau, Ontario/Quebec									
Population	1,115.2	1,116.3	...	1.1	13.9	13.9	0.1	1.3	1.3
Labour force	770.5	769.4	4.2	-1.1	10.7	10.7	-0.1	1.4	1.4
Employment	723.0	722.5	4.2	-0.5	10.8	10.8	-0.1	1.5	1.5
Unemployment	47.5	46.8	2.1	-0.7	-0.2	-0.2	-1.5	-0.4	-0.4
Participation rate	69.1	68.9	0.4	-0.2	0.1	0.1
Unemployment rate	6.2	6.1	0.3	-0.1	-0.1	-0.1
Employment rate	64.8	64.7	0.4	-0.1	0.1	0.1
Ottawa-Gatineau, Quebec part, Ontario/Quebec									
Population	274.7	274.7	...	0.0	1.6	1.6	0.0	0.6	0.6
Labour force	189.3	187.2	1.4	-2.1	-5.6	-5.6	-1.1	-2.9	-2.9
Employment	176.6	175.8	1.4	-0.8	-5.5	-5.5	-0.5	-3.0	-3.0
Unemployment	12.7	11.4	0.7	-1.3	-0.1	-0.1	-10.2	-0.9	-0.9
Participation rate	68.9	68.1	0.5	-0.8	-2.5	-2.5
Unemployment rate	6.7	6.1	0.3	-0.6	0.1	0.1
Employment rate	64.3	64.0	0.5	-0.3	-2.4	-2.4
Ottawa-Gatineau, Ontario part, Ontario/Quebec									
Population	840.6	841.5	...	0.9	12.2	12.2	0.1	1.5	1.5
Labour force	581.2	582.1	3.9	0.9	16.3	16.3	0.2	2.9	2.9
Employment	546.4	546.8	3.9	0.4	16.4	16.4	0.1	3.1	3.1
Unemployment	34.8	35.4	1.9	0.6	-0.1	-0.1	1.7	-0.3	-0.3
Participation rate	69.1	69.2	0.5	0.1	1.0	1.0
Unemployment rate	6.0	6.1	0.3	0.1	-0.2	-0.2
Employment rate	65.0	65.0	0.5	0.0	1.0	1.0
Kingston, Ontario									
Population	139.9	140.1	...	0.2	1.4	1.4	0.1	1.0	1.0
Labour force	89.4	89.8	0.8	0.4	-0.4	-0.4	0.4	-0.4	-0.4
Employment	84.2	84.6	0.8	0.4	0.2	0.2	0.5	0.2	0.2
Unemployment	5.1	5.2	0.3	0.1	-0.6	-0.6	2.0	-10.3	-10.3
Participation rate	63.9	64.1	0.6	0.2	-0.9	-0.9
Unemployment rate	5.7	5.8	0.3	0.1	-0.6	-0.6
Employment rate	60.2	60.4	0.6	0.2	-0.5	-0.5
Peterborough, Ontario									
Population	104.7	104.7	...	0.0	0.2	0.2	0.0	0.2	0.2
Labour force	63.7	65.4	1.1	1.7	0.7	0.7	2.7	1.1	1.1
Employment	59.8	61.8	1.1	2.0	2.0	2.0	3.3	3.3	3.3
Unemployment	3.9	3.6	0.5	-0.3	-1.3	-1.3	-7.7	-26.5	-26.5
Participation rate	60.8	62.5	1.0	1.7	0.6	0.6
Unemployment rate	6.1	5.5	0.8	-0.6	-2.1	-2.1
Employment rate	57.1	59.0	1.0	1.9	1.8	1.8

See notes at the end of the table.

Table 5-1 – continued

Labour force characteristics by census metropolitan area (seasonally adjusted) — 3 month moving average

	November 2016	December 2016	S.E. ¹	Change from			Percent change from		
				last month	last December	twelve months ago	last month	last December	twelve months ago
in thousands (except rates)									
Oshawa, Ontario									
Population	328.8	329.2	...	0.4	5.7	5.7	0.1	1.8	1.8
Labour force	228.2	228.4	1.8	0.2	10.5	10.5	0.1	4.8	4.8
Employment	216.1	216.6	2.0	0.5	13.7	13.7	0.2	6.8	6.8
Unemployment	12.2	11.8	1.0	-0.4	-3.2	-3.2	-3.3	-21.3	-21.3
Participation rate	69.4	69.4	0.6	0.0	2.0	2.0
Unemployment rate	5.3	5.2	0.5	-0.1	-1.7	-1.7
Employment rate	65.7	65.8	0.6	0.1	3.1	3.1
Toronto, Ontario									
Population	5,224.7	5,231.8	...	7.1	92.2	92.2	0.1	1.8	1.8
Labour force	3,447.8	3,444.4	10.3	-3.4	-17.0	-17.0	-0.1	-0.5	-0.5
Employment	3,208.7	3,208.7	10.6	0.0	-9.8	-9.8	0.0	-0.3	-0.3
Unemployment	239.1	235.7	6.1	-3.4	-7.3	-7.3	-1.4	-3.0	-3.0
Participation rate	66.0	65.8	0.2	-0.2	-1.5	-1.5
Unemployment rate	6.9	6.8	0.2	-0.1	-0.2	-0.2
Employment rate	61.4	61.3	0.2	-0.1	-1.3	-1.3
Hamilton, Ontario									
Population	652.8	653.4	...	0.6	8.0	8.0	0.1	1.2	1.2
Labour force	418.3	422.1	3.5	3.8	12.4	12.4	0.9	3.0	3.0
Employment	392.1	397.4	3.6	5.3	12.0	12.0	1.4	3.1	3.1
Unemployment	26.2	24.7	1.5	-1.5	0.4	0.4	-5.7	1.6	1.6
Participation rate	64.1	64.6	0.5	0.5	1.1	1.1
Unemployment rate	6.3	5.9	0.4	-0.4	0.0	0.0
Employment rate	60.1	60.8	0.6	0.7	1.1	1.1
St. Catharines-Niagara, Ontario									
Population	346.0	346.1	...	0.1	2.3	2.3	0.0	0.7	0.7
Labour force	220.2	219.8	2.2	-0.4	-5.8	-5.8	-0.2	-2.6	-2.6
Employment	206.3	205.7	2.3	-0.6	-1.8	-1.8	-0.3	-0.9	-0.9
Unemployment	13.9	14.1	1.0	0.2	-4.0	-4.0	1.4	-22.1	-22.1
Participation rate	63.6	63.5	0.6	-0.1	-2.1	-2.1
Unemployment rate	6.3	6.4	0.4	0.1	-1.6	-1.6
Employment rate	59.6	59.4	0.7	-0.2	-1.0	-1.0
Kitchener-Cambridge-Waterloo, Ontario									
Population	427.9	428.2	...	0.3	4.9	4.9	0.1	1.2	1.2
Labour force	292.6	293.8	2.4	1.2	-4.7	-4.7	0.4	-1.6	-1.6
Employment	278.0	279.1	2.5	1.1	-0.3	-0.3	0.4	-0.1	-0.1
Unemployment	14.5	14.7	1.0	0.2	-4.4	-4.4	1.4	-23.0	-23.0
Participation rate	68.4	68.6	0.6	0.2	-1.9	-1.9
Unemployment rate	5.0	5.0	0.3	0.0	-1.4	-1.4
Employment rate	65.0	65.2	0.6	0.2	-0.8	-0.8
Brantford, Ontario									
Population	113.5	113.7	...	0.2	1.5	1.5	0.2	1.3	1.3
Labour force	74.8	77.0	0.9	2.2	5.0	5.0	2.9	6.9	6.9
Employment	71.2	73.4	0.9	2.2	4.9	4.9	3.1	7.2	7.2
Unemployment	3.6	3.6	0.4	0.0	0.1	0.1	0.0	2.9	2.9
Participation rate	65.9	67.7	0.8	1.8	3.5	3.5
Unemployment rate	4.8	4.7	0.5	-0.1	-0.2	-0.2
Employment rate	62.7	64.6	0.8	1.9	3.5	3.5
Guelph, Ontario									
Population	131.0	131.2	...	0.2	1.9	1.9	0.2	1.5	1.5
Labour force	95.1	95.5	1.0	0.4	-1.8	-1.8	0.4	-1.8	-1.8
Employment	91.1	91.3	1.1	0.2	-1.9	-1.9	0.2	-2.0	-2.0
Unemployment	4.0	4.3	0.5	0.3	0.2	0.2	7.5	4.9	4.9
Participation rate	72.6	72.8	0.8	0.2	-2.5	-2.5
Unemployment rate	4.2	4.5	0.5	0.3	0.3	0.3
Employment rate	69.5	69.6	0.8	0.1	-2.5	-2.5

See notes at the end of the table.

Table 5-1 – continued

Labour force characteristics by census metropolitan area (seasonally adjusted) — 3 month moving average

	November 2016	December 2016	S.E. ¹	Change from			Percent change from		
				last month	last December	twelve months ago	last month	last December	twelve months ago
in thousands (except rates)									
London, Ontario									
Population	427.8	428.1	...	0.3	4.4	4.4	0.1	1.0	1.0
Labour force	261.4	259.6	2.6	-1.8	-12.6	-12.6	-0.7	-4.6	-4.6
Employment	243.3	241.5	2.7	-1.8	-13.9	-13.9	-0.7	-5.4	-5.4
Unemployment	18.1	18.1	1.1	0.0	1.4	1.4	0.0	8.4	8.4
Participation rate	61.1	60.6	0.6	-0.5	-3.6	-3.6
Unemployment rate	6.9	7.0	0.4	0.1	0.9	0.9
Employment rate	56.9	56.4	0.6	-0.5	-3.9	-3.9
Windsor, Ontario									
Population	283.0	283.2	...	0.2	2.7	2.7	0.1	1.0	1.0
Labour force	174.5	171.8	1.6	-2.7	2.3	2.3	-1.5	1.4	1.4
Employment	164.5	162.1	1.6	-2.4	9.0	9.0	-1.5	5.9	5.9
Unemployment	10.0	9.6	0.9	-0.4	-6.8	-6.8	-4.0	-41.5	-41.5
Participation rate	61.7	60.7	0.6	-1.0	0.3	0.3
Unemployment rate	5.7	5.6	0.5	-0.1	-4.1	-4.1
Employment rate	58.1	57.2	0.6	-0.9	2.6	2.6
Barrie, Ontario									
Population	171.0	171.2	...	0.2	3.0	3.0	0.1	1.8	1.8
Labour force	110.2	110.5	1.7	0.3	-1.2	-1.2	0.3	-1.1	-1.1
Employment	101.5	102.3	1.8	0.8	-2.3	-2.3	0.8	-2.2	-2.2
Unemployment	8.7	8.2	0.8	-0.5	1.0	1.0	-5.7	13.9	13.9
Participation rate	64.4	64.5	1.0	0.1	-1.9	-1.9
Unemployment rate	7.9	7.4	0.7	-0.5	1.0	1.0
Employment rate	59.4	59.8	1.1	0.4	-2.4	-2.4
Greater Sudbury, Ontario									
Population	140.3	140.3	...	0.0	0.2	0.2	0.0	0.1	0.1
Labour force	90.7	90.0	0.8	-0.7	3.4	3.4	-0.8	3.9	3.9
Employment	83.9	82.7	0.8	-1.2	3.4	3.4	-1.4	4.3	4.3
Unemployment	6.8	7.3	0.4	0.5	0.0	0.0	7.4	0.0	0.0
Participation rate	64.6	64.1	0.6	-0.5	2.3	2.3
Unemployment rate	7.5	8.1	0.4	0.6	-0.3	-0.3
Employment rate	59.8	58.9	0.6	-0.9	2.3	2.3
Thunder Bay, Ontario									
Population	104.8	104.8	...	0.0	0.2	0.2	0.0	0.2	0.2
Labour force	63.9	63.4	0.6	-0.5	0.0	0.0	-0.8	0.0	0.0
Employment	59.9	59.5	0.6	-0.4	-0.2	-0.2	-0.7	-0.3	-0.3
Unemployment	4.0	3.9	0.3	-0.1	0.2	0.2	-2.5	5.4	5.4
Participation rate	61.0	60.5	0.5	-0.5	-0.1	-0.1
Unemployment rate	6.3	6.2	0.4	-0.1	0.4	0.4
Employment rate	57.2	56.8	0.5	-0.4	-0.3	-0.3
Winnipeg, Manitoba									
Population	666.3	667.0	...	0.7	10.4	10.4	0.1	1.6	1.6
Labour force	456.5	457.2	1.3	0.7	4.2	4.2	0.2	0.9	0.9
Employment	425.3	425.8	1.3	0.5	0.7	0.7	0.1	0.2	0.2
Unemployment	31.2	31.5	0.7	0.3	3.6	3.6	1.0	12.9	12.9
Participation rate	68.5	68.5	0.2	0.0	-0.5	-0.5
Unemployment rate	6.8	6.9	0.2	0.1	0.7	0.7
Employment rate	63.8	63.8	0.2	0.0	-0.9	-0.9
Regina, Saskatchewan									
Population	202.5	202.7	...	0.2	2.9	2.9	0.1	1.5	1.5
Labour force	147.0	147.5	0.9	0.5	1.9	1.9	0.3	1.3	1.3
Employment	139.1	139.4	0.9	0.3	-0.1	-0.1	0.2	-0.1	-0.1
Unemployment	8.0	8.0	0.4	0.0	1.9	1.9	0.0	31.1	31.1
Participation rate	72.6	72.8	0.4	0.2	-0.1	-0.1
Unemployment rate	5.4	5.4	0.3	0.0	1.2	1.2
Employment rate	68.7	68.8	0.5	0.1	-1.0	-1.0

See notes at the end of the table.

Table 5-1 – continued

Labour force characteristics by census metropolitan area (seasonally adjusted) — 3 month moving average

	November 2016	December 2016	S.E. ¹	Change from			Percent change from		
				last month	last December	twelve months ago	last month	last December	twelve months ago
in thousands (except rates)									
Saskatoon, Saskatchewan									
Population	259.2	259.5	...	0.3	4.7	4.7	0.1	1.8	1.8
Labour force	184.3	183.7	1.0	-0.6	0.4	0.4	-0.3	0.2	0.2
Employment	170.4	169.9	1.1	-0.5	-1.6	-1.6	-0.3	-0.9	-0.9
Unemployment	13.9	13.8	0.6	-0.1	2.0	2.0	-0.7	16.9	16.9
Participation rate	71.1	70.8	0.4	-0.3	-1.1	-1.1
Unemployment rate	7.5	7.5	0.3	0.0	1.1	1.1
Employment rate	65.7	65.5	0.4	-0.2	-1.8	-1.8
Calgary, Alberta									
Population	1,209.5	1,210.3	...	0.8	18.5	18.5	0.1	1.6	1.6
Labour force	901.7	907.3	4.3	5.6	44.9	44.9	0.6	5.2	5.2
Employment	808.9	815.0	4.4	6.1	12.8	12.8	0.8	1.6	1.6
Unemployment	92.8	92.4	2.6	-0.4	32.3	32.3	-0.4	53.7	53.7
Participation rate	74.6	75.0	0.4	0.4	2.6	2.6
Unemployment rate	10.3	10.2	0.3	-0.1	3.2	3.2
Employment rate	66.9	67.3	0.4	0.4	0.0	0.0
Edmonton, Alberta									
Population	1,126.6	1,127.4	...	0.8	16.1	16.1	0.1	1.4	1.4
Labour force	805.5	807.9	3.9	2.4	-19.7	-19.7	0.3	-2.4	-2.4
Employment	750.8	747.7	4.0	-3.1	-28.1	-28.1	-0.4	-3.6	-3.6
Unemployment	54.7	60.1	2.3	5.4	8.3	8.3	9.9	16.0	16.0
Participation rate	71.5	71.7	0.3	0.2	-2.8	-2.8
Unemployment rate	6.8	7.4	0.3	0.6	1.1	1.1
Employment rate	66.6	66.3	0.4	-0.3	-3.5	-3.5
Kelowna, British Columbia									
Population	156.8	157.1	...	0.3	3.6	3.6	0.2	2.3	2.3
Labour force	100.5	102.6	1.4	2.1	5.1	5.1	2.1	5.2	5.2
Employment	91.8	93.5	1.4	1.7	2.6	2.6	1.9	2.9	2.9
Unemployment	8.8	9.1	0.6	0.3	2.5	2.5	3.4	37.9	37.9
Participation rate	64.1	65.3	0.9	1.2	1.8	1.8
Unemployment rate	8.8	8.9	0.6	0.1	2.1	2.1
Employment rate	58.5	59.5	0.9	1.0	0.3	0.3
Abbotsford-Mission, British Columbia									
Population	148.2	148.4	...	0.2	2.4	2.4	0.1	1.6	1.6
Labour force	100.0	100.1	0.8	0.1	2.3	2.3	0.1	2.4	2.4
Employment	93.5	94.0	0.8	0.5	3.6	3.6	0.5	4.0	4.0
Unemployment	6.5	6.1	0.4	-0.4	-1.3	-1.3	-6.2	-17.6	-17.6
Participation rate	67.5	67.5	0.5	0.0	0.5	0.5
Unemployment rate	6.5	6.1	0.4	-0.4	-1.5	-1.5
Employment rate	63.1	63.3	0.6	0.2	1.4	1.4
Vancouver, British Columbia									
Population	2,175.3	2,177.2	...	1.9	30.7	30.7	0.1	1.4	1.4
Labour force	1,436.2	1,433.9	5.8	-2.3	15.7	15.7	-0.2	1.1	1.1
Employment	1,362.8	1,360.4	5.9	-2.4	23.4	23.4	-0.2	1.8	1.8
Unemployment	73.5	73.5	3.2	0.0	-7.7	-7.7	0.0	-9.5	-9.5
Participation rate	66.0	65.9	0.3	-0.1	-0.2	-0.2
Unemployment rate	5.1	5.1	0.2	0.0	-0.6	-0.6
Employment rate	62.6	62.5	0.3	-0.1	0.2	0.2
Victoria, British Columbia									
Population	308.4	308.6	...	0.2	3.5	3.5	0.1	1.1	1.1
Labour force	197.7	196.7	1.6	-1.0	1.9	1.9	-0.5	1.0	1.0
Employment	187.9	186.9	1.7	-1.0	3.9	3.9	-0.5	2.1	2.1
Unemployment	9.8	9.9	0.8	0.1	-1.9	-1.9	1.0	-16.1	-16.1
Participation rate	64.1	63.7	0.5	-0.4	-0.1	-0.1
Unemployment rate	5.0	5.0	0.4	0.0	-1.1	-1.1
Employment rate	60.9	60.6	0.5	-0.3	0.6	0.6

1. Average standard error of change in two consecutive months (see "Sampling Errors" in Data Quality for further explanations).

Note(s): Estimates in this table are based on 2011 Census boundaries. Related CANSIM Table 282-0135. The sum of individual categories may not always add to the total due to rounding.

Table 5-2
Labour force characteristics by census metropolitan area (seasonally adjusted) — Monthly

	November 2016	December 2016	S.E. ¹	Change from			Percent change from		
				last month	last December	twelve months ago	last month	last December	twelve months ago
in thousands (except rates)									
Montréal, Quebec									
Population	3,400.4	3,402.2	...	1.8	33.5	33.5	0.1	1.0	1.0
Labour force	2,247.3	2,281.9	17.5	34.6	35.9	35.9	1.5	1.6	1.6
Employment	2,100.9	2,127.2	17.7	26.3	78.8	78.8	1.3	3.8	3.8
Unemployment	146.4	154.7	12.6	8.3	-42.9	-42.9	5.7	-21.7	-21.7
Participation rate	66.1	67.1	0.5	1.0	0.4	0.4
Unemployment rate	6.5	6.8	0.5	0.3	-2.0	-2.0
Employment rate	61.8	62.5	0.5	0.7	1.7	1.7
Toronto, Ontario									
Population	5,231.9	5,238.7	...	6.8	92.9	92.9	0.1	1.8	1.8
Labour force	3,437.2	3,454.4	21.6	17.2	-22.4	-22.4	0.5	-0.6	-0.6
Employment	3,209.7	3,212.0	20.8	2.3	-18.2	-18.2	0.1	-0.6	-0.6
Unemployment	227.6	242.4	14.4	14.8	-4.2	-4.2	6.5	-1.7	-1.7
Participation rate	65.7	65.9	0.4	0.2	-1.7	-1.7
Unemployment rate	6.6	7.0	0.4	0.4	-0.1	-0.1
Employment rate	61.3	61.3	0.4	0.0	-1.5	-1.5
Vancouver, British Columbia									
Population	2,177.2	2,179.0	...	1.8	29.9	29.9	0.1	1.4	1.4
Labour force	1,424.3	1,429.9	11.9	5.6	9.2	9.2	0.4	0.6	0.6
Employment	1,349.1	1,361.4	11.9	12.3	25.8	25.8	0.9	1.9	1.9
Unemployment	75.2	68.5	7.8	-6.7	-16.6	-16.6	-8.9	-19.5	-19.5
Participation rate	65.4	65.6	0.6	0.2	-0.5	-0.5
Unemployment rate	5.3	4.8	0.5	-0.5	-1.2	-1.2
Employment rate	62.0	62.5	0.6	0.5	0.4	0.4

1. Average standard error of change in two consecutive months (see "Sampling Errors" in Data Quality for further explanations).

Note(s): Estimates in this table are based on 2011 Census boundaries. Related CANSIM Table 282-0136. The sum of individual categories may not always add to the total due to rounding.

Table 6-1

Labour force characteristics by province and economic region, ¹ unadjusted for seasonality, 3 month moving average ending in December 2015 and December 2016

	Population	Labour force			Participation rate	Unemployment rate	Employment rate
		Labour force	Employment	Unemployment			
	in thousands				percent		
Canada							
2015	29,399.2	19,260.5	18,000.8	1,259.7	65.5	6.5	61.2
2016	29,700.1	19,423.2	18,189.8	1,233.4	65.4	6.4	61.2
Newfoundland and Labrador							
2015	442.9	267.9	233.4	34.5	60.5	12.9	52.7
2016	444.9	265.5	227.4	38.1	59.7	14.4	51.1
Avalon Peninsula [1010]							
2015	233.4	148.4	135.3	13.1	63.6	8.8	58.0
2016	235.9	154.9	136.8	18.1	65.7	11.7	58.0
South Coast-Burin Peninsula and Notre Dame-Central Bonavista Bay [1020, 1040]							
2015	122.4	66.5	54.4	12.1	54.3	18.2	44.4
2016	121.9	62.2	49.4	12.8	51.0	20.6	40.5
West Coast-Northern Peninsula-Labrador [1030]							
2015	87.1	53.0	43.7	9.3	60.8	17.5	50.2
2016	87.0	48.4	41.2	7.2	55.6	14.9	47.4
Prince Edward Island							
2015	121.1	80.5	72.3	8.2	66.5	10.2	59.7
2016	122.3	79.5	70.9	8.7	65.0	10.9	58.0
Nova Scotia							
2015	786.8	486.7	448.6	38.1	61.9	7.8	57.0
2016	789.9	483.7	448.1	35.6	61.2	7.4	56.7
Cape Breton [1210]							
2015	106.7	54.3	46.3	8.0	50.9	14.7	43.4
2016	105.6	54.8	47.4	7.4	51.9	13.5	44.9
North Shore [1220]							
2015	128.7	79.5	73.2	6.2	61.8	7.8	56.9
2016	128.1	76.5	70.9	5.6	59.7	7.3	55.3
Annapolis Valley [1230]							
2015	102.7	59.9	55.6	4.3	58.3	7.2	54.1
2016	102.7	58.6	54.7	3.9	57.1	6.7	53.3
Southern [1240]							
2015	98.2	54.1	48.4	5.7	55.1	10.5	49.3
2016	97.7	52.7	47.5	5.2	53.9	9.9	48.6
Halifax [1250]							
2015	350.6	239.0	225.1	13.9	68.2	5.8	64.2
2016	355.8	241.2	227.7	13.5	67.8	5.6	64.0
New Brunswick							
2015	621.9	383.1	352.0	31.1	61.6	8.1	56.6
2016	623.8	385.6	353.2	32.4	61.8	8.4	56.6
Campbellton-Miramichi [1310]							
2015	128.8	71.4	62.2	9.3	55.4	13.0	48.3
2016	128.2	69.0	58.9	10.1	53.8	14.6	45.9
Moncton-Richibucto [1320]							
2015	177.1	111.7	104.0	7.7	63.1	6.9	58.7
2016	179.0	113.5	104.0	9.5	63.4	8.4	58.1
Saint John-St. Stephen [1330]							
2015	141.9	88.2	82.0	6.2	62.2	7.0	57.8
2016	141.8	91.2	84.5	6.7	64.3	7.3	59.6
Fredericton-Oromocto [1340]							
2015	110.3	71.9	67.0	4.9	65.2	6.8	60.7
2016	111.4	73.4	69.3	4.1	65.9	5.6	62.2

See notes at the end of the table.

Table 6-1 – continued

Labour force characteristics by province and economic region, ¹ unadjusted for seasonality, 3 month moving average ending in December 2015 and December 2016

	Population	Labour force			Participation rate	Unemployment rate	Employment rate
		Labour force	Employment	Unemployment			
	in thousands				percent		
Edmundston-Woodstock [1350]							
2015	63.8	39.8	36.8	3.0	62.4	7.5	57.7
2016	63.4	38.5	36.6	2.0	60.7	5.2	57.7
Quebec							
2015	6,859.3	4,415.4	4,101.2	314.3	64.4	7.1	59.8
2016	6,904.2	4,451.6	4,181.1	270.5	64.5	6.1	60.6
Gaspésie-Îles-de-la-Madeleine [2410]							
2015	77.8	42.9	36.1	6.8	55.1	15.9	46.4
2016	77.0	40.7	34.6	6.1	52.9	15.0	44.9
Bas-Saint-Laurent [2415]							
2015	169.6	92.6	85.9	6.6	54.6	7.1	50.6
2016	168.9	94.8	85.8	9.0	56.1	9.5	50.8
Capitale-Nationale [2420]							
2015	618.6	422.4	405.3	17.1	68.3	4.0	65.5
2016	623.3	430.5	413.1	17.4	69.1	4.0	66.3
Chaudière-Appalaches [2425]							
2015	349.4	228.7	218.0	10.7	65.5	4.7	62.4
2016	350.2	224.1	214.5	9.6	64.0	4.3	61.3
Estrie [2430]							
2015	269.8	162.7	153.1	9.6	60.3	5.9	56.7
2016	271.5	160.5	153.4	7.1	59.1	4.4	56.5
Centre-du-Québec [2433]							
2015	200.7	119.5	112.5	7.1	59.5	5.9	56.1
2016	201.4	133.1	126.3	6.8	66.1	5.1	62.7
Montréal [2435]							
2015	1,253.8	837.9	793.6	44.3	66.8	5.3	63.3
2016	1,262.9	813.8	774.6	39.2	64.4	4.8	61.3
Montréal [2440]							
2015	1,670.8	1,077.4	966.8	110.7	64.5	10.3	57.9
2016	1,686.7	1,119.2	1,037.0	82.1	66.4	7.3	61.5
Laval [2445]							
2015	352.9	215.4	195.8	19.7	61.0	9.1	55.5
2016	356.3	233.2	211.5	21.7	65.5	9.3	59.4
Lanaudière [2450]							
2015	412.7	273.2	253.1	20.1	66.2	7.4	61.3
2016	415.8	260.5	240.9	19.6	62.7	7.5	57.9
Laurentides [2455]							
2015	494.6	327.9	311.2	16.7	66.3	5.1	62.9
2016	500.3	328.7	314.4	14.3	65.7	4.4	62.8
Outaouais [2460]							
2015	319.0	217.6	203.8	13.8	68.2	6.3	63.9
2016	321.1	210.6	197.6	13.0	65.6	6.2	61.5
Abitibi-Témiscamingue [2465]							
2015	120.5	74.0	69.6	4.4	61.4	5.9	57.8
2016	120.5	79.8	75.2	4.5	66.2	5.6	62.4
Mauricie [2470]							
2015	225.4	128.3	116.4	11.9	56.9	9.3	51.6
2016	225.3	124.5	117.0	7.5	55.3	6.0	51.9
Saguenay-Lac-Saint-Jean [2475]							
2015	231.8	137.7	128.0	9.7	59.4	7.0	55.2
2016	231.3	139.3	130.4	8.9	60.2	6.4	56.4

See notes at the end of the table.

Table 6-1 – continued

Labour force characteristics by province and economic region, ¹ unadjusted for seasonality, 3 month moving average ending in December 2015 and December 2016

	Population	Labour force			Participation rate	Unemployment rate	Employment rate
		Labour force	Employment	Unemployment			
	in thousands				percent		
Côte-Nord and Nord-du-Québec [2480, 2490]							
2015	91.9	57.2	52.3	4.9	62.2	8.6	56.9
2016	91.6	58.5	54.7	3.7	63.9	6.3	59.7
Ontario							
2015	11,435.4	7,408.8	6,948.2	460.6	64.8	6.2	60.8
2016	11,580.8	7,469.4	7,041.6	427.8	64.5	5.7	60.8
Ottawa [3510]							
2015	1,101.1	730.7	690.3	40.4	66.4	5.5	62.7
2016	1,113.0	742.3	703.0	39.3	66.7	5.3	63.2
Kingston-Pembroke [3515]							
2015	377.5	208.8	197.1	11.6	55.3	5.6	52.2
2016	379.1	230.8	220.9	9.9	60.9	4.3	58.3
Muskoka-Kawarthas [3520]							
2015	326.9	166.2	155.7	10.5	50.8	6.3	47.6
2016	329.1	196.0	188.3	7.7	59.6	3.9	57.2
Toronto [3530]							
2015	5,391.7	3,603.4	3,365.6	237.8	66.8	6.6	62.4
2016	5,483.8	3,596.1	3,370.6	225.5	65.6	6.3	61.5
Kitchener-Waterloo-Barrie [3540]							
2015	1,082.2	754.8	718.7	36.1	69.7	4.8	66.4
2016	1,098.3	733.0	697.8	35.3	66.7	4.8	63.5
Hamilton-Niagara Peninsula [3550]							
2015	1,202.6	767.3	720.7	46.6	63.8	6.1	59.9
2016	1,216.1	782.7	739.5	43.2	64.4	5.5	60.8
London [3560]							
2015	555.1	351.5	332.8	18.7	63.3	5.3	60.0
2016	560.5	343.4	324.1	19.2	61.3	5.6	57.8
Windsor-Sarnia [3570]							
2015	524.5	312.3	287.3	25.1	59.5	8.0	54.8
2016	526.5	315.8	298.2	17.6	60.0	5.6	56.6
Stratford-Bruce Peninsula [3580]							
2015	245.9	145.7	137.4	8.3	59.3	5.7	55.9
2016	246.4	160.0	154.0	6.0	64.9	3.8	62.5
Northeast [3590]							
2015	456.6	263.4	243.6	19.8	57.7	7.5	53.4
2016	456.1	263.2	245.7	17.5	57.7	6.6	53.9
Northwest [3595]							
2015	171.2	104.6	98.9	5.7	61.1	5.4	57.8
2016	172.1	106.1	99.5	6.6	61.7	6.2	57.8
Manitoba							
2015	991.3	672.8	637.4	35.3	67.9	5.2	64.3
2016	1,003.6	671.5	633.4	38.1	66.9	5.7	63.1
Southeast [4610]							
2015	89.9	61.0	58.1	2.9	67.9	4.8	64.6
2016	91.7	62.3	60.1	2.2	67.9	3.5	65.5
South Central and North Central [4620, 4640]							
2015	84.9	55.8	53.7	2.2	65.7	3.9	63.3
2016	85.7	55.4	53.7	1.7	64.6	3.1	62.7
Southwest [4630]							
2015	88.1	60.8	57.7	3.1	69.0	5.1	65.5
2016	88.7	56.9	53.9	3.0	64.1	5.3	60.8

See notes at the end of the table.

Table 6-1 – continued

Labour force characteristics by province and economic region, ¹ unadjusted for seasonality, 3 month moving average ending in December 2015 and December 2016

	Population	Labour force			Participation rate	Unemployment rate	Employment rate
		Labour force	Employment	Unemployment			
	in thousands				percent		
Winnipeg [4650]							
2015	597.6	407.6	383.8	23.8	68.2	5.8	64.2
2016	606.5	410.8	383.6	27.2	67.7	6.6	63.2
Interlake [4660]							
2015	75.2	50.1	48.3	1.8	66.6	3.6	64.2
2016	75.6	48.6	46.1	2.5	64.3	5.1	61.0
Parklands and Northern [4670, 4680]							
2015	55.7	37.5	35.9	1.6	67.3	4.3	64.5
2016	55.4	37.5	35.9	1.6	67.7	4.3	64.8
Saskatchewan							
2015	864.6	606.5	576.2	30.3	70.1	5.0	66.6
2016	871.9	604.3	566.6	37.6	69.3	6.2	65.0
Regina-Moose Mountain [4710]							
2015	264.5	193.8	186.6	7.2	73.3	3.7	70.5
2016	267.3	192.3	182.6	9.6	71.9	5.0	68.3
Swift Current-Moose Jaw [4720]							
2015	82.4	53.8	52.2	1.6	65.3	3.0	63.3
2016	81.9	54.9	53.1	1.8	67.0	3.3	64.8
Saskatoon-Biggar [4730]							
2015	297.3	211.4	199.6	11.8	71.1	5.6	67.1
2016	301.7	211.0	196.7	14.4	69.9	6.8	65.2
Yorkton-Melville [4740]							
2015	62.3	39.6	37.6	2.1	63.6	5.3	60.4
2016	61.6	40.5	38.1	2.3	65.7	5.7	61.9
Prince Albert and Northern [4750, 4760]							
2015	158.0	107.8	100.1	7.6	68.2	7.1	63.4
2016	159.4	105.6	96.2	9.4	66.2	8.9	60.4
Alberta							
2015	3,376.5	2,444.9	2,288.2	156.7	72.4	6.4	67.8
2016	3,408.7	2,463.8	2,264.9	198.9	72.3	8.1	66.4
Lethbridge-Medicine Hat [4810]							
2015	230.4	158.7	149.6	9.1	68.9	5.7	64.9
2016	229.9	157.8	147.6	10.1	68.6	6.4	64.2
Camrose-Drumheller [4820]							
2015	162.0	109.4	103.8	5.6	67.5	5.1	64.1
2016	160.9	111.2	102.7	8.5	69.1	7.6	63.8
Calgary [4830]							
2015	1,277.9	920.1	857.3	62.7	72.0	6.8	67.1
2016	1,296.1	966.3	873.1	93.2	74.6	9.6	67.4
Banff-Jasper-Rocky Mountain House and Athabasca-Grande Prairie-Peace River [4840, 4870]							
2015	277.4	200.7	185.6	15.1	72.4	7.5	66.9
2016	276.5	194.8	182.6	12.1	70.5	6.2	66.0
Red Deer [4850]							
2015	171.3	120.1	112.7	7.4	70.1	6.2	65.8
2016	172.7	122.9	113.1	9.8	71.2	8.0	65.5
Edmonton [4860]							
2015	1,139.4	844.4	795.5	48.9	74.1	5.8	69.8
2016	1,154.2	820.6	763.5	57.1	71.1	7.0	66.1
Wood Buffalo-Cold Lake [4880]							
2015	118.1	91.5	83.6	7.9	77.5	8.6	70.8
2016	118.4	90.2	82.2	8.0	76.2	8.9	69.4

See notes at the end of the table.

Table 6-1 – continued

Labour force characteristics by province and economic region, ¹ unadjusted for seasonality, 3 month moving average ending in December 2015 and December 2016

	Population	Labour force			Participation rate	Unemployment rate	Employment rate
		Labour force	Employment	Unemployment			
	in thousands				percent		
British Columbia							
2015	3,899.4	2,493.9	2,343.3	150.6	64.0	6.0	60.1
2016	3,950.1	2,548.2	2,402.6	145.6	64.5	5.7	60.8
Vancouver Island and Coast <i>[5910]</i>							
2015	657.5	390.1	365.0	25.0	59.3	6.4	55.5
2016	664.7	400.0	378.5	21.5	60.2	5.4	56.9
Lower Mainland-Southwest <i>[5920]</i>							
2015	2,436.6	1,598.0	1,509.0	89.0	65.6	5.6	61.9
2016	2,472.7	1,619.8	1,539.5	80.4	65.5	5.0	62.3
Thompson-Okanagan <i>[5930]</i>							
2015	433.0	263.5	244.3	19.2	60.9	7.3	56.4
2016	438.6	275.3	252.8	22.5	62.8	8.2	57.6
Kootenay <i>[5940]</i>							
2015	122.1	70.8	65.7	5.1	58.0	7.2	53.8
2016	122.6	77.0	70.2	6.8	62.8	8.8	57.3
Cariboo <i>[5950]</i>							
2015	127.5	84.9	78.8	6.1	66.6	7.2	61.8
2016	127.9	87.4	81.0	6.5	68.3	7.4	63.3
North Coast and Nechako <i>[5960, 5970]</i>							
2015	66.6	43.1	40.1	3.0	64.7	7.0	60.2
2016	67.1	44.8	41.4	3.4	66.8	7.6	61.7
Northeast <i>[5980]</i>							
2015	56.0	43.6	40.3	3.3	77.9	7.6	72.0
2016	56.4	43.9	39.3	4.6	77.8	10.5	69.7

1. For geographic descriptions of economic regions, refer to the Guide to the Labour Force Survey (catalogue number 71-543-GIE).

Note(s): Estimates in this table are based on 2011 Census boundaries. Related CANSIM table 282-0122. As a result of the wildfire affecting northern Alberta, LFS data for the census agglomeration of Wood Buffalo were not collected from May to July 2016. Data collection resumed in August 2016. Estimates for the economic region of Wood Buffalo–Cold Lake are not available for June, July, August, and September 2016.

Table 6-2
Labour force characteristics by territory (seasonally adjusted) - 3 month moving average

	November 2016	December 2016	S.E. ¹	Change from			Percent change from		
				last month	last December	twelve months ago	last month	last December	twelve months ago
in thousands (except rates)									
Yukon ²									
Population	28.4	28.4	...	0.0	0.2	0.2	0.0	0.7	0.7
Labour force	22.0	21.8	0.3	-0.2	1.2	1.2	-0.9	5.8	5.8
Employment	20.9	20.8	0.3	-0.1	1.3	1.3	-0.5	6.7	6.7
Unemployment	1.1	1.0	0.1	-0.1	-0.2	-0.2	-9.1	-16.7	-16.7
Participation rate	77.5	76.8	0.9	-0.7	3.8	3.8
Unemployment rate	5.0	4.6	0.7	-0.4	-1.2	-1.2
Employment rate	73.6	73.2	1.0	-0.4	4.1	4.1
Northwest Territories ³									
Population	32.5	32.4	...	-0.1	0.4	0.4	-0.3	1.3	1.3
Labour force	23.9	23.7	0.3	-0.2	-0.5	-0.5	-0.8	-2.1	-2.1
Employment	22.3	22.1	0.3	-0.2	0.4	0.4	-0.9	1.8	1.8
Unemployment	1.6	1.6	0.2	0.0	-0.8	-0.8	0.0	-33.3	-33.3
Participation rate	73.5	73.1	0.8	-0.4	-2.5	-2.5
Unemployment rate	6.7	6.8	0.7	0.1	-3.1	-3.1
Employment rate	68.6	68.2	0.9	-0.4	0.4	0.4
Nunavut ⁴									
Population	24.3	24.2	...	-0.1	0.1	0.1	-0.4	0.4	0.4
Labour force	16.2	15.7	0.2	-0.5	0.3	0.3	-3.1	1.9	1.9
Employment	13.7	13.5	0.2	-0.2	0.7	0.7	-1.5	5.5	5.5
Unemployment	2.4	2.2	0.2	-0.2	-0.5	-0.5	-8.3	-18.5	-18.5
Participation rate	66.6	64.8	0.9	-1.8	0.7	0.7
Unemployment rate	15.1	14.0	0.9	-1.1	-3.2	-3.2
Employment rate	56.6	55.7	1.0	-0.9	2.6	2.6

1. Average standard error of change in two consecutive months (see "Sampling Errors" in Data Quality for further explanations).
2. Since 1992, the Labour force survey (LFS) has been conducted in the Yukon, using an alternative methodology that accommodates some of the operational difficulties inherent to remote locales. These estimates are not included in the national totals. In 1995, the LFS in the Yukon underwent a sample redesign. One result of the redesign was that the covered population increased from 85% to 92%, which is reflected by the sharp increase in the three month moving averages estimates of January, February and March of 1995 for all the level estimates. Users are therefore warned to be cautious when comparing estimates before January 1995 to estimates for January 1995 and forward.
3. Since 2001, the Labour force survey (LFS) has been administered in the Northwest Territories, using an alternative methodology that accommodates some of the operational difficulties inherent to remote locales. These estimates are not included in national totals.
4. Since 2004, the Labour force survey (LFS) has been administered in Nunavut, using an alternative methodology that accommodates some of the operational difficulties inherent to remote locales. These estimates are 3-month moving averages and are not included in national totals. From January 2004 to December 2007, estimates represent about 70% of all Nunavut residents aged 15 and over. Starting in January 2008, coverage was extended to 92%, so that by March 2008, the 3-month moving average is completely based on the extended coverage. Because of the large difference in coverage, users are recommended not to compare estimates prior to January 2008 with data afterwards. The January and February 2008 3-month moving average estimates are based on a mix of both coverages, since the extended coverage was introduced in January 2008. Estimates from January 2004 to December 2007 are based on the 10 largest communities in Nunavut: Iqaluit, Rankin Inlet, Cambridge Bay, Kugluktuk, Baker Lake, Arviat, Pond Inlet, Cape Dorset, Pangnirtung, Igloodik. Estimates from March 2008 to present cover the above communities as well as: Taloyoak, Gjoa Haven, Kugaaruk, Coral Harbour, Repulse Bay, Qikiqtarjuaq, Arctic Bay, Hall Beach, Clyde River.

Note(s): Related CANSIM table 282-0100.

Table 7
Average usual hours and wages of employees by selected characteristics, Canada, unadjusted for seasonality

	Employees				Full-time			Part-time		
	Number	Average weekly hours	Average weekly wages	Average hourly wages	Number	Average weekly hours	Average weekly wages	Number	Average weekly hours	Average weekly wages
	thousands		current dollars		thousands		current dollars	thousands		current dollars
December 2016										
15 years and over	15,420.8	35.0	944.55	25.97	12,459.5	39.2	1,094.17	2,961.3	17.1	315.05
15 to 24 years	2,296.1	25.7	421.39	15.26	1,051.3	38.6	690.30	1,244.8	14.8	194.28
25 years and over	13,124.6	36.6	1,036.08	27.84	11,408.2	39.3	1,131.38	1,716.5	18.7	402.64
Males	7,709.6	37.5	1,076.66	27.93	6,761.5	40.4	1,186.45	948.1	16.6	293.69
Females	7,711.2	32.5	812.47	24.01	5,698.0	37.8	984.65	2,013.2	17.3	325.11
Union coverage										
Union coverage	4,690.3	35.7	1,076.31	29.75	4,016.1	38.5	1,177.84	674.2	19.0	471.43
No union coverage	10,730.5	34.6	886.96	24.32	8,443.4	39.6	1,054.36	2,287.1	16.5	268.96
Job permanency										
Permanent	13,469.1	36.0	988.75	26.65	11,381.7	39.2	1,108.09	2,087.4	18.2	338.05
Temporary	1,951.7	28.2	639.52	21.29	1,077.8	39.2	947.16	873.9	14.5	260.11
Occupation										
Management occupations	986.9	39.4	1,667.61	42.44	955.5	40.1	1,702.53	31.4	17.6	604.54
Business, finance and administration occupations	2,650.4	35.3	932.49	25.92	2,263.4	38.3	1,030.70	387.0	17.6	358.21
Natural and applied sciences and related occupations	1,201.6	38.2	1,389.23	36.23	1,153.2	39.1	1,427.35	48.4	16.3	481.50
Health occupations	1,134.5	33.8	998.94	29.31	880.1	37.8	1,123.87	254.4	20.2	566.73
Occupations in education, law and social, community and government services	1,863.5	33.6	1,105.67	32.03	1,474.8	38.1	1,282.43	388.7	16.5	435.01
Occupations in art, culture, recreation and sport	345.5	28.4	709.42	22.86	212.5	39.0	1,029.21	133.0	11.4	198.55
Sales and service occupations	4,078.7	30.5	537.74	16.59	2,571.1	38.3	719.52	1,507.5	17.0	227.71
Trades, transport and equipment operators and related occupations	2,116.1	39.8	1,031.61	25.62	1,963.7	41.4	1,084.81	152.4	18.4	345.97
Natural resources, agriculture and related production occupations	232.3	41.9	1,103.91	25.19	203.7	45.8	1,223.95	28.6	14.4	248.05
Occupations in manufacturing and utilities	811.4	39.4	872.23	21.94	781.5	40.2	893.74	29.9	18.2	310.53
December 2015										
15 years and over	15,129.3	35.1	931.78	25.55	12,249.9	39.3	1,076.42	2,879.5	17.3	316.45
15 to 24 years	2,277.2	26.4	419.32	14.80	1,091.2	38.8	667.02	1,186.1	15.0	191.44
25 years and over	12,852.1	36.6	1,022.59	27.46	11,158.7	39.3	1,116.46	1,693.4	19.0	404.01
Males	7,591.7	37.6	1,068.90	27.65	6,677.6	40.5	1,175.85	914.1	16.6	287.60
Females	7,537.6	32.6	793.68	23.45	5,572.3	37.9	957.27	1,965.4	17.7	329.87
Union coverage										
Union coverage	4,651.5	35.6	1,057.51	29.26	3,941.9	38.6	1,165.80	709.7	18.8	456.00
No union coverage	10,477.8	34.9	875.97	23.91	8,308.0	39.6	1,034.02	2,169.8	16.8	270.81
Job permanency										
Permanent	13,229.8	36.1	976.64	26.25	11,198.7	39.3	1,092.85	2,031.1	18.4	335.92
Temporary	1,899.5	28.3	619.35	20.68	1,051.2	39.1	901.42	848.3	14.9	269.82
Occupation										
Management occupations	960.0	39.5	1,564.12	39.53	930.1	40.2	1,599.58	29.9	17.7	460.11
Business, finance and administration occupations	2,596.3	35.6	918.51	25.35	2,246.0	38.3	1,006.23	350.3	17.9	356.09
Natural and applied sciences and related occupations	1,265.3	38.6	1,366.97	35.46	1,222.2	39.3	1,394.72	43.0	18.7	578.83
Health occupations	1,114.0	33.2	972.80	29.10	839.1	37.7	1,112.34	274.9	19.4	546.86
Occupations in education, law and social, community and government services	1,846.0	33.5	1,055.25	30.73	1,459.5	38.0	1,221.50	386.5	16.6	427.51
Occupations in art, culture, recreation and sport	312.3	28.8	731.94	23.48	194.3	38.9	1,034.69	118.1	12.0	233.79
Sales and service occupations	3,950.9	30.4	538.62	16.59	2,467.9	38.3	723.43	1,483.0	17.3	231.06
Trades, transport and equipment operators and related occupations	2,076.7	40.3	1,048.70	25.78	1,936.9	41.8	1,099.83	139.8	18.5	340.26
Natural resources, agriculture and related production occupations	227.3	42.2	1,074.68	24.52	205.1	45.2	1,166.28	22.2	14.9	228.47
Occupations in manufacturing and utilities	780.6	39.4	859.61	21.57	748.8	40.4	883.66	31.8	17.6	293.37

Note(s): Related CANSIM table 282-0167.

Table 8

Regional unemployment rates used by the Employment Insurance program, ¹ seasonally adjusted, 3-month moving average

Region	Effective from January 8, 2017 to February 11, 2017
	percent
Newfoundland and Labrador	
01. St. John's, Newfoundland and Labrador	9.9
02. Newfoundland and Labrador ²	19.0
Prince Edward Island ³	
03. Charlottetown, Prince Edward Island	7.9
04. Prince Edward Island ⁴	14.2
Nova Scotia	
05. Eastern Nova Scotia	14.7
06. Western Nova Scotia	8.9
07. Halifax, Nova Scotia	6.1
New Brunswick	
08. Fredericton-Moncton-Saint John, New Brunswick	7.9
09. Madawaska-Charlotte, New Brunswick	7.2
10. Restigouche-Albert, New Brunswick	14.2
Quebec	
11. Gaspésie-Îles-de-la-Madeleine, Quebec	16.4
12. Quebec, Quebec	4.4
13. Trois-Rivières, Quebec	7.1
14. South Central Quebec	5.0
15. Sherbrooke, Quebec	5.8
16. Montérégie, Quebec	6.4
17. Montreal, Quebec	6.8
18. Central Quebec	7.4
19. North Western Quebec	8.7
20. Lower Saint Lawrence and North Shore, Quebec	10.1
21. Hull, Quebec	6.0
22. Chicoutimi-Jonquière, Quebec	7.4
Ontario	
23. Ottawa, Ontario	6.0
24. Eastern Ontario	6.6
25. Kingston, Ontario	5.6
26. Central Ontario	6.4
27. Oshawa, Ontario	5.2
28. Toronto, Ontario	6.9
29. Hamilton, Ontario	5.9
30. St. Catharines, Ontario	6.5
31. London, Ontario	7.1
32. Niagara, Ontario	7.9
33. Windsor, Ontario	6.5
34. Kitchener, Ontario	5.2
35. Huron, Ontario	7.2
36. South Central Ontario	4.2
37. Sudbury, Ontario	8.0
38. Thunder Bay, Ontario	5.9
39. Northern Ontario	12.1
Manitoba	
40. Winnipeg, Manitoba	6.8
41. Southern Manitoba	6.9
42. Northern Manitoba	31.5
Saskatchewan	
43. Regina, Saskatchewan	5.3
44. Saskatoon, Saskatchewan	7.4
45. Southern Saskatchewan	8.1
46. Northern Saskatchewan	20.3

See notes at the end of the table.

Table 8 – continued

Regional unemployment rates used by the Employment Insurance program, ¹ seasonally adjusted, 3-month moving average

Region	Effective from January 8, 2017 to February 11, 2017
	percent
Alberta	
47. Calgary, Alberta	10.5
48. Edmonton, Alberta	7.5
49. Northern Alberta	12.3
50. Southern Alberta	8.2
British Columbia	
51. Southern Interior British Columbia	9.6
52. Abbotsford, British Columbia	6.3
53. Vancouver, British Columbia	5.2
54. Victoria, British Columbia	5.8
55. Southern Coastal British Columbia	7.4
56. Northern British Columbia	12.4
Territories ^{3, 5}	
57. Whitehorse, Yukon ⁶	5.6
58. Yukon	8.2
59. Yellowknife, Northwest Territories	4.7
60. Northwest Territories ⁷	10.1
61. Iqaluit, Nunavut	4.2
62. Nunavut ⁸	19.3

1. The boundaries of these regions are determined by Employment and Social Development Canada (ESDC). For geographic descriptions and maps of employment insurance regions, see the ESDC website: <http://srv129.services.gc.ca/eiregions/en/geocont.aspx>.

2. This region excludes St. John's.

3. Prince Edward Island as well as the territories are each comprised of two regions effective October 12, 2014.

4. This region excludes Charlottetown.

5. The monthly regional unemployment rates for EI purposes in the territories are subject to the greater of a seasonally adjusted 3-month-moving average or 12-month-moving average.

6. This region excludes Whitehorse.

7. This region excludes Yellowknife.

8. This region excludes Iqaluit.

Note(s): Related CANSIM table 282-0168. All regions are based on the 1996 Census boundaries, with the exception of those in Prince Edward Island and in the territories, which respect the 2011 Census boundaries.

Data quality

Definitions and explanations

The **labour force** is composed of those members of the civilian non-institutional population 15 years of age and over who, during the reference week, were employed or unemployed.

Employed persons are those who, during the reference week:

- (a) did any work at all at a job or business;
- (b) had a job but were not at work.

A person is considered to be **full-time** if his/her usual hours at the main job are 30 or more hours per week. When the number of hours worked at the main job is usually less than 30 hours per week then he/she is considered to be **part-time**.

Unemployed persons are those who, during the reference week:

- (a) were without work, had actively looked for work in the past four weeks (ending with reference week) and were available for work;
- (b) had not actively looked for work in the past four weeks but were on temporary layoff and were available for work;
- (c) had not actively looked for work but had a new job to start within four weeks from the reference week and were available for work.

Persons in the civilian non-institutional population 15 years of age and over who, during the reference week, were neither employed nor unemployed are classified as **not in the labour force**.

The **unemployment rate** represents the number of unemployed persons expressed as a percentage of the labour force (employed and unemployed). The unemployment rate for a particular group (for example, age, sex, or marital status) is the number unemployed in that group expressed as a percentage of the labour force for that group.

The **participation rate** represents the total labour force expressed as a percentage of the population aged 15 years and over. The participation rate for a particular group (for example, women aged 25 years and over) is the labour force in that group expressed as a percentage of the population for that group.

The **employment rate** represents the number of employed persons expressed as a percentage of the population aged 15 years and over. The employment rate for a particular group (for example, age, sex, marital status, or province) is the number employed in that group expressed as a percentage of the population for that group.

The **part-time rate** represents the number of persons employed part-time expressed as a percentage of the employed. The part-time rate for a particular group (for example, age or sex) is the number of persons employed part-time in that group expressed as a percentage of the employed for that group.

All geographic regions are based on the 2011 Census boundaries.

Seasonal adjustment

Fluctuations in economic time series are caused by seasonal, cyclical and irregular movements. A seasonally adjusted series is one from which seasonal movements have been eliminated. Seasonal movements are defined as those which are caused by regular annual events such as climate, holidays, vacation periods and cycles related to crops, production and retail sales associated with Christmas and Easter. The seasonally adjusted series contains irregular as well as longer-term cyclical fluctuations.

The seasonally adjusted series are revised each year to take into account current data and to generate new forecast factors for the next twelve months. The data are therefore subject to slight revisions in future issues of this publication.

For more information on seasonal adjustment, see *Seasonally adjusted data – Frequently asked questions*.

Sampling variability of estimates

Estimates in this publication are based on the Labour Force Survey, a monthly survey of approximately 56,000 households across Canada. Because the entire population is not surveyed, the estimates are subject to sampling error. While the published estimate is the best available indicator of the real value, changes in the level of any estimates between two months can be the result of a true change, or sampling variability. The sampling error can be estimated by calculating the standard error for the published estimate or statistic. These standard errors have been included in the publication tables in order to assist users in interpreting the data. They are based on 12-month averages and are updated twice a year, in February and August.

Interpretation based on standard error

Approximately two-thirds (68%) of the time, a change greater than the sampling error indicates a real change. The larger the change compared to the standard error, the better the chance that we are observing a real change, as opposed to a change due to sampling variability. At the 95% confidence level, the change in the estimate must be greater than twice the standard error in order to ensure that change is real.

Movements in estimates that are smaller than the standard error are less likely to reflect a real change and more likely to be due to sampling variability. While the above is true for monthly movements, one can have more confidence in a series of consecutive movements in the same direction, even though some of the monthly movements may be smaller than the standard error.

Interpretation based on confidence intervals

Confidence intervals provide another way of looking at the variability inherent in estimates of sample surveys. To illustrate how to calculate the confidence interval, let us say that one month the published estimate for total employment rose by 16,000 to reach 18,000,000. The associated standard error for the movement estimate is 29,500. The standard error used to interpret the movement estimate indicates that:

- There are approximately two chances in three (68%) that the real value of the movement between the two months falls within the range -13,500 to +45,500 (16,000 + or – one standard error).
- There are approximately nine chances in ten (90%) that the real value of the movement between the two months falls within the range -31,200 to +63,200 (16,000 + or – 1.6 times the standard error).
- There are approximately nineteen chances in twenty (95%) that the real value of the movement between the two months falls within the range -43,000 to +75,000 (16,000 + or – two standard errors).

For more detailed explanations on the sampling variability of estimates, and in particular for information on how to assess the variability of level estimates, consult the **Data quality** section of the *Guide to the Labour Force Survey* (71-543-G).

Documentation

For more detailed information about the Labour Force Survey, see the following documents:

- Overview of the Labour Force Survey (LFS) 3701
- *Guide to the Labour Force Survey* (71-543-G)
- *Methodology of the Canadian Labour Force Survey* (71-526-X)
- LFS *geographical maps*