

Catalogue no. 71-001-X

Labour Force Information

Friday, March 10, 2017

February 12 to 18, 2017



Statistics
Canada

Statistique
Canada

Canada

How to obtain more information

For information about this product or the wide range of services and data available from Statistics Canada, visit our website, www.statcan.gc.ca.

You can also contact us by

e-mail at STATCAN.infostats-infostats.STATCAN@canada.ca

telephone, from Monday to Friday, 8:30 a.m. to 4:30 p.m., at the following numbers:

- Statistical Information Service 1-800-263-1136
- National telecommunications device for the hearing impaired 1-800-363-7629
- Fax line 1-514-283-9350

Depository Services Program

- Inquiries line 1-800-635-7943
- Fax line 1-800-565-7757

To access this product

This product, Catalogue no. 71-001-X, is available free in electronic format. To obtain a single issue, visit our website, www.statcan.gc.ca and browse by "Key resource" > "Publications."

Standards of service to the public

Statistics Canada is committed to serving its clients in a prompt, reliable and courteous manner. To this end, this agency has developed standards of service that its employees observe. To obtain a copy of these service standards, please contact Statistics Canada toll-free at 1-800-263-1136. The service standards are also published at www.statcan.gc.ca under "Contact us" > "Standards of service to the public."

Statistics Canada
Labour Statistics Division
Labour Force Survey Program

Labour Force Information

Friday, March 10, 2017

February 12 to 18, 2017

Published by authority of the Minister responsible for Statistics Canada

© Minister of Industry, 2017

All rights reserved. Use of this publication is governed by the Statistics Canada
Open License Agreement.

<http://www.statcan.gc.ca/reference/licence-eng.html>

March 2017

Catalogue no. 71-001-X

ISSN 1492-5478

Frequency: Monthly

Ottawa

Cette publication est également disponible en français.

Note of appreciation

Canada owes the success of its statistical system to a long-standing partnership between Statistics Canada, the citizens of Canada, its businesses, governments and other institutions. Accurate and timely statistical information could not be produced without their continued cooperation and goodwill.

User information

Symbols

The following standard symbols are used in Statistics Canada publications:

- . not available for any reference period
- .. not available for a specific reference period
- ... not applicable
- 0 true zero or a value rounded to zero
- 0^s value rounded to 0 (zero) where there is a meaningful distinction between true zero and the value that was rounded
- p preliminary
- r revised
- x suppressed to meet the confidentiality requirements of the *Statistics Act*
- E use with caution
- F too unreliable to be published
- * significantly different from reference category ($p < 0.05$)

Special requests (\$)

Custom tabulations can be arranged on an ad hoc or regular basis. This service enables you to specify tables and time series to meet your own requirements. The cost varies according to the request. For more information, contact us toll-free at 1-866-873-8788 or e-mail us at statcan.labour-travail.statcan@canada.ca.

Schedule of LFS releases

Release date	Reference period
February 10, 2017	January 15 to 21, 2017
March 10, 2017	February 12 to 18, 2017
April 7, 2017	March 12 to 18, 2017
May 5, 2017	April 9 to 15, 2017
June 9, 2017	May 14 to 20, 2017
July 7, 2017	June 11 to 17, 2017
August 4, 2017	July 9 to 15, 2017
September 8, 2017	August 13 to 19, 2017
October 6, 2017	September 10 to 16, 2017
November 3, 2017	October 8 to 14, 2017
December 1, 2017	November 5 to 11, 2017
January 5, 2018	December 3 to 9, 2017

Table of contents

Highlights	5
Analysis — February 2017	6
Charts	
1. Employment indexes, Canada, seasonally adjusted	10
2. Unemployment, employment, and participation rates, Canada, seasonally adjusted	11
3. Employment indexes by industry, Canada, seasonally adjusted	12
4. Employment indexes by industry, Canada, seasonally adjusted	13
5. Employment indexes by industry, Canada, seasonally adjusted	14
6. Employment indexes by province, Canada, seasonally adjusted	15
7. Employment indexes by province, Canada, seasonally adjusted	16
8. Canada 150 - Employment rate of women and men aged 25 to 54, 1950 to 2016	17
Related products	18
Statistical tables	
1 Labour force characteristics by age and sex, Canada, seasonally adjusted	29
2 Employment by class of worker and industry, Canada, seasonally adjusted	31
3 Labour force characteristics by province, seasonally adjusted	32
4 Selected labour force characteristics (seasonally adjusted)	34
4-1 Newfoundland and Labrador	34
4-2 Prince Edward Island	35
4-3 Nova Scotia	36
4-4 New Brunswick	37
4-5 Quebec	38
4-6 Ontario	39
4-7 Manitoba	40
4-8 Saskatchewan	41
4-9 Alberta	42
4-10 British Columbia	43
5 Labour force characteristics by census metropolitan area (seasonally adjusted)	44
5-1 3 month moving average	44
5-2 Monthly	49

Table of contents – continued

6	Labour force characteristics	50
6-1	by province and economic region, unadjusted for seasonality, 3 month moving average ending in February 2016 and February 2017	50
6-2	by territory (seasonally adjusted) - 3 month moving average	55
7	Average usual hours and wages of employees by selected characteristics, Canada, unadjusted for seasonality	56
8	Regional unemployment rates used by the Employment Insurance program, seasonally adjusted, 3-month moving average	57
Data quality, concepts and methodology		
	Data quality	59

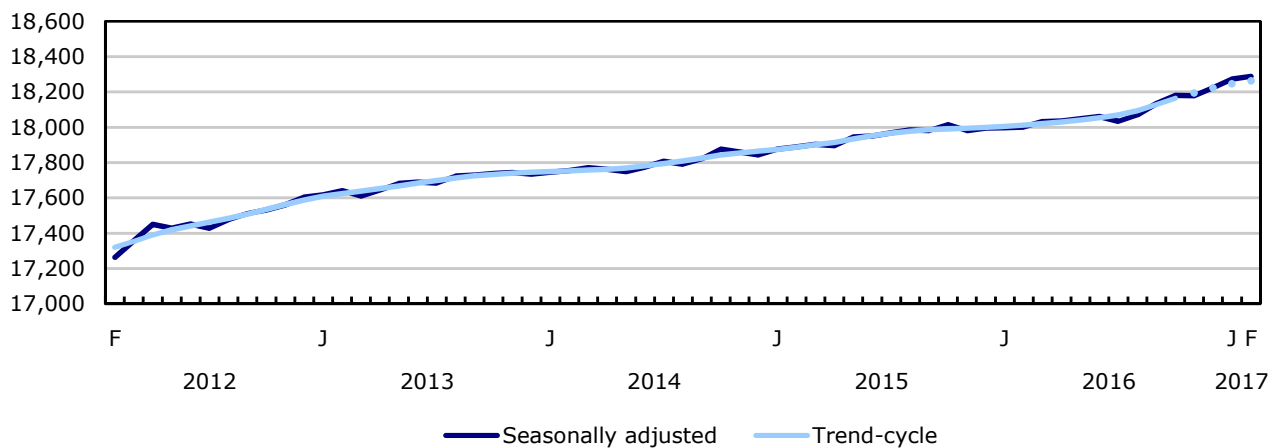
Highlights

Employment was little changed in February (+15,000 or +0.1%). An increase in the number of people working full-time offset a decline in the number of people working part-time. With fewer people searching for work, the unemployment rate declined by 0.2 percentage points to 6.6%, matching the rate observed in January 2015, and the lowest since October 2008.

Chart 1
Employment and unemployment rate, Canada, seasonally adjusted

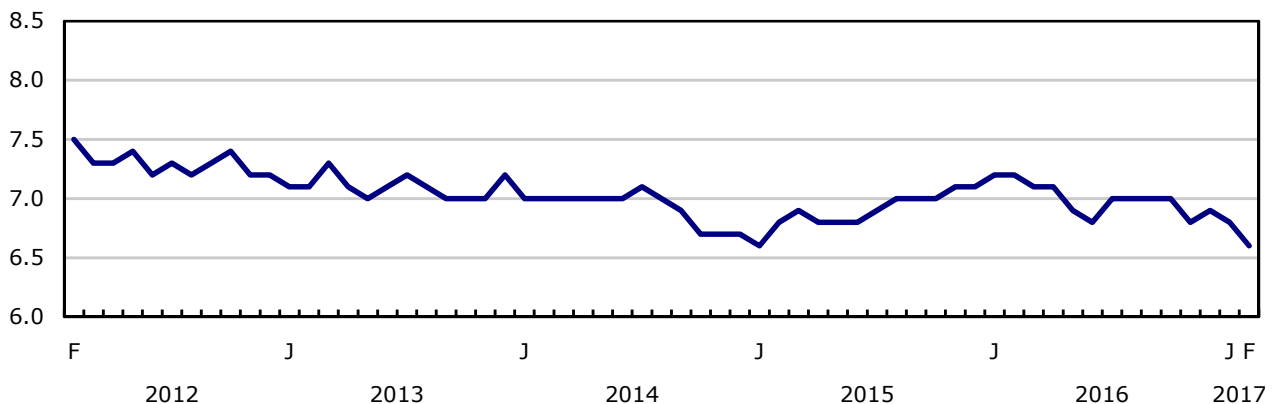
Employment

thousands



Unemployment rate

percent



Analysis — February 2017

Employment was little changed in February (+15,000 or +0.1%). An increase in the number of people working full-time offset a decline in the number of people working part-time. With fewer people searching for work, the unemployment rate declined by 0.2 percentage points to 6.6%, matching the rate observed in January 2015, and the lowest since October 2008.

In the 12 months to February, employment rose by 288,000 (+1.6%), with most of the gains occurring since July 2016. This coincided with stronger economic growth observed in the second half of 2016.

In February, there were an estimated 105,000 more people working full-time, the second notable increase in three months. In the 12 months to February, full-time employment rose by 235,000 (+1.6%), driven by increases since July. The number of people working part-time fell by an estimated 90,000 in February, following a period of growth that began in autumn of 2015.

In the 12 months to February, the total number of hours worked was little changed.

From January to February, employment increased among core-aged women (25 to 54 years old) and men aged 55 and older. There was little employment change among the other demographic groups.

Provincially, employment rose in British Columbia, Saskatchewan and Manitoba. In contrast, there were fewer people working in Nova Scotia and in Newfoundland and Labrador. Employment was essentially unchanged in the remaining provinces.

In February, more people were employed in wholesale and retail trade, public administration, and in transportation and warehousing.

Employment increases for core-aged women

Employment among women aged 25 to 54 increased for the third consecutive month, up 18,000 in February. Their unemployment rate remained at 5.3% as more women in this age group participated in the labour market. More core-aged women worked full-time in the month (+84,000) and this was partly offset by fewer of them working part-time (-65,000). The recent employment gains for core-aged women boosted their year-over-year employment growth to 98,000 (+1.7%).

Following a notable increase in January, employment for 25- to 54-year-old men held steady in February. Compared with February 2016, employment for this group increased by 63,000 (+1.0%), driven by gains since the fall of 2016. In the 12 months to February, the unemployment rate for core-aged men fell by a full percentage point to 5.8%.

Employment among men aged 55 and older increased by 14,000 in February, and their unemployment rate was 6.3%. In the 12 months to February, employment among older men rose by 63,000 (+3.1%), and their population increased by 154,000 (+3.1%).

Employment among women aged 55 and older held steady in February, and their unemployment rate was 5.2%. Compared with 12 months earlier, 56,000 (+3.4%) more women aged 55 and older were working, and the number of women in this age group rose by 156,000 (+2.9%).

In February, employment among youths aged 15 to 24 was little changed both in the month and on a year-over-year basis, while their population continued to decline. Their unemployment rate declined by 0.9 percentage points to 12.4% in February, as fewer youths searched for work.

Provincial summary

In February, employment increased by 19,000 in British Columbia, continuing an upward trend that began in the spring of 2015. The increase in February was fueled by gains in full-time work and was spread across several industries. In the 12 months to February 2017, employment increased by 85,000 or 3.6%, the fastest growth rate of all provinces. Over the same period, the unemployment rate fell by 1.4 percentage points to 5.1%, the lowest since October 2008. In February British Columbia posted the lowest unemployment rate among the provinces.

Employment in Saskatchewan rose by 8,000 in February, the largest increase since April 2012. Nearly all of the gains were in full-time work and stemmed from the services sector. Prior to the increase in February, total employment had been relatively flat since the spring of 2016. In February, the provincial unemployment rate fell by 0.4 percentage points to 6.0%.

In Manitoba, employment increased by 3,400 in February, driven by gains in full-time work and in construction. At the same time, the unemployment rate fell by 0.3 percentage points to 5.8%, the second lowest among the provinces following British Columbia. The employment increase in February boosted year-over-year gains for the province to 6,600 (+1.0%).

In February, the number of people working full-time increased by 53,000 in Ontario, offsetting a similar-sized decrease in the number of people working part-time, resulting in little change in overall employment for the month. Building on gains observed since July, employment in Ontario was up by 108,000 (+1.5%) on a year-over-year basis, with virtually all of the increase in full-time work. In February the unemployment rate declined by 0.2 percentage points to 6.2% as the number of people searching for work edged down.

There was little employment change in Quebec for the second consecutive month. In the 12 months to February, employment was up by 83,000 (+2.0%), powered by gains in the second half of 2016. The unemployment rate in February was 6.4%, down 1.1 percentage points from 12 months earlier.

In Alberta, employment held steady in February, with full-time gains (+19,000) offsetting losses in part-time employment (-18,000). Following significant declines from autumn 2015 to the summer of 2016, total employment in the province has been stable in recent months. In February, the unemployment rate fell by 0.5 percentage points to 8.3%, as fewer people searched for work.

Following an increase in January, there were 6,800 fewer people working in Nova Scotia in February and the unemployment rate was 8.1%. The employment decline in February was largely the result of a drop in part-time employment. Although total employment in the province decreased in February, it was little changed compared with 12 months earlier.

Employment in Newfoundland and Labrador fell by 3,800 in February and the unemployment rate was 14.2%. The employment decline observed in February offset an increase in January and continued a downward trend that began in May 2016. In the 12 months to February, employment in the province fell by 6,400 (-2.8%).

Industry perspective

Following little change in the previous three months, employment in wholesale and retail trade increased by 19,000 in February and edged up 35,000 (+1.3%) on a year-over-year basis. The additional employment in February followed higher sales reported in the latter part of 2016 at both the wholesale and retail level.

Employment in transportation and warehousing increased for the second consecutive month, up 8,800 in February. Compared with 12 months earlier, employment in this industry increased by 34,000 (+3.8%).

Employment in public administration also increased for the second consecutive month, up 12,000 in February, bringing total gains to 65,000 (+7.2%) on a year-over-year basis. In the 12 months to February, there were more people employed at the federal level and also at the local, municipal and regional level.

The number of private and public sector employees was little changed in February. On a year-over-year basis, increases in the number of private sector employees totalled 253,000 (+2.2%), spread across several service industries, while public sector employment rose by 78,000 (+2.2%), driven by gains in public administration.

The number of self-employed workers was little changed in February and edged down from 12 months earlier.

Canada 150

In celebration of the country's 150th birthday, Statistics Canada is presenting snapshots from our rich statistical history.

Women's employment rates and gender wage differences

In 1950, 21.1% of women aged 25 to 54 were employed. This had more than tripled to 77.8% by 2016. In contrast, the employment rate for men fell from 94.0% in 1950 to 85.0% in 2016. The increase in women's employment coincided with socio-demographic and economic changes, such as the pursuit of higher levels of education, delayed marriage and childbearing, and increased separation and divorce.

Despite the convergence in their employment rates, women continue to earn less than men. In 2016, women aged 25 to 54 working full-time earned an average of \$26.69 per hour, while their male counterparts earned an average of \$30.35. This means that on an hourly basis, women earned \$0.88 for every dollar earned by men in 2016, up from about \$0.75 in the mid-1980s.

For more information on women's employment rates and gender wage differences, see the "*Women and Paid Work*" chapter of *Women in Canada*.

Note to readers

The LFS estimates for February are for the week of February 12 to 18.

The LFS estimates are based on a sample and are therefore subject to sampling variability. As a result, monthly estimates will show more variability than trends observed over longer time periods. For more information, see "*Interpreting Monthly Changes in Employment from the Labour Force Survey*." Estimates for smaller geographic areas or industries also have more variability. For an explanation of the sampling variability of estimates and how to use standard errors to assess this variability, consult the "Data quality" section of the publication *Labour Force Information (71-001-X)*.

This analysis focuses on differences between estimates that are statistically significant at the 68% confidence level.

The LFS estimates are the first in a series of labour market indicators released by Statistics Canada, which includes indicators from programs such as the Survey of Employment, Payrolls and Hours (SEPH), Employment Insurance Statistics, and the Job Vacancy and Wage Survey. For more information on the conceptual differences between employment measures from the LFS and SEPH, refer to *section 8* of the *Guide to the Labour Force Survey (71-543-G)*.

The **employment rate** is the number of employed people as a percentage of the population aged 15 and older. The rate for a particular group (for example, youths aged 15 to 24) is the number employed in that group as a percentage of the population for that group.

The **unemployment rate** is the number of unemployed as a percentage of the labour force (employed and unemployed).

The **participation rate** is the number of employed and unemployed as a percentage of the population.

Full-time employment consists of persons who usually work 30 hours or more per week at their main or only job.

Part-time employment consists of persons who usually work less than 30 hours per week at their main or only job.

Seasonal adjustment

Unless otherwise stated, this release presents seasonally adjusted estimates, which facilitate comparisons by removing the effects of seasonal variations. For more information on seasonal adjustment, see *Seasonally adjusted data – Frequently asked questions*.

Chart 1 shows trend-cycle data on employment. These data represent a smoothed version of the seasonally adjusted time series, which provides information on longer-term movements, including changes in direction underlying the series. These data are available in CANSIM table 282-0087 for the national level employment series. For more information, see the *StatCan Blog* and *Trend-cycle estimates – Frequently asked questions*.

Next release

The next release of the LFS will be on April 7.

Chart 1
Employment indexes, Canada, seasonally adjusted

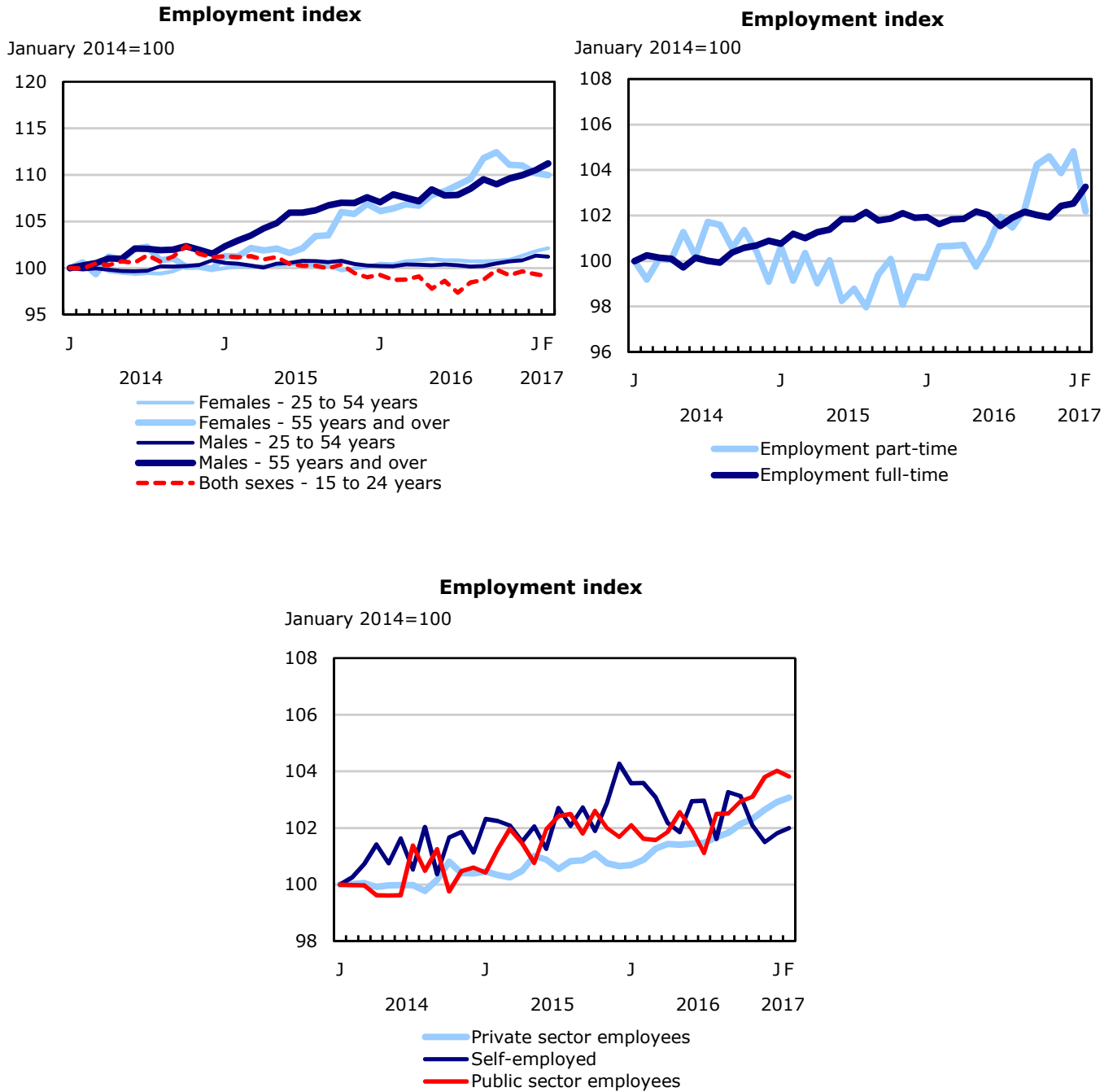


Chart 2
Unemployment, employment, and participation rates, Canada, seasonally adjusted

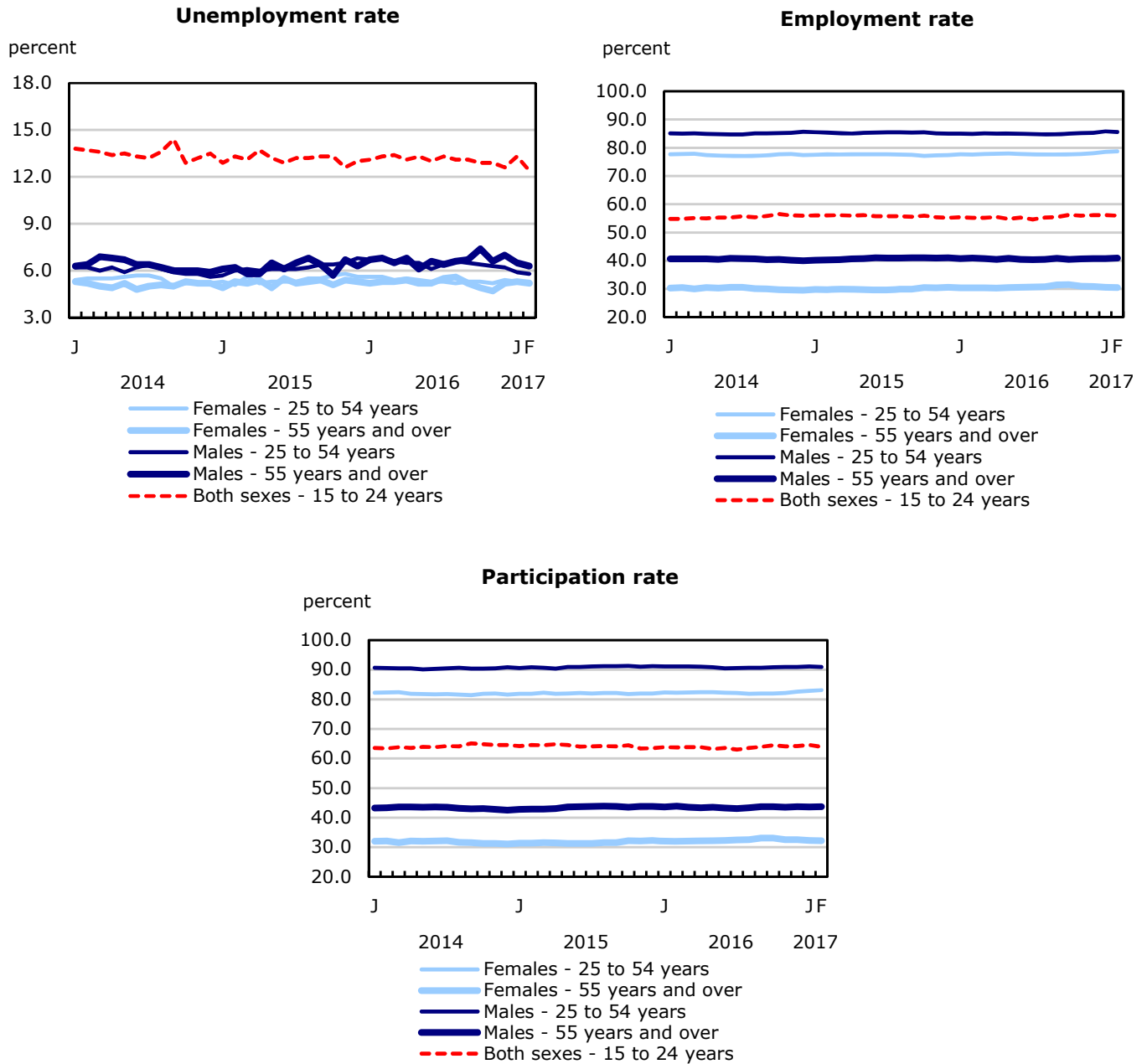


Chart 3
Employment indexes by industry, Canada, seasonally adjusted

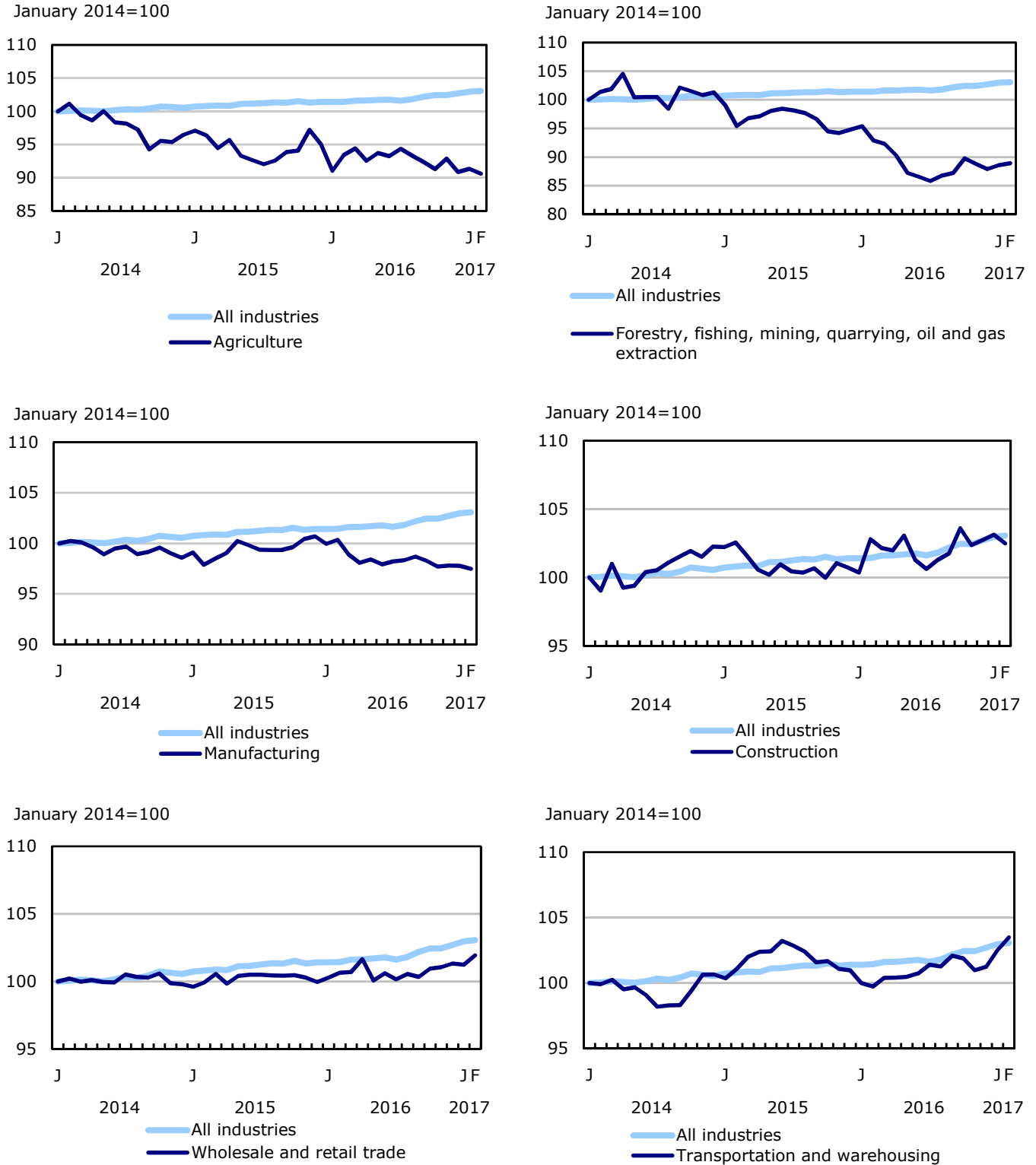


Chart 4
Employment indexes by industry, Canada, seasonally adjusted

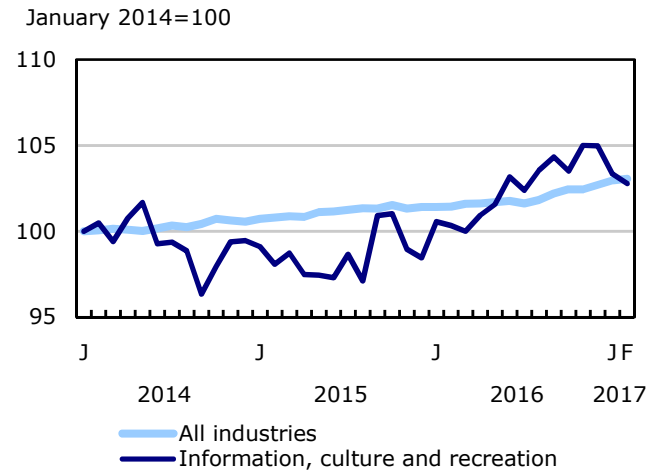
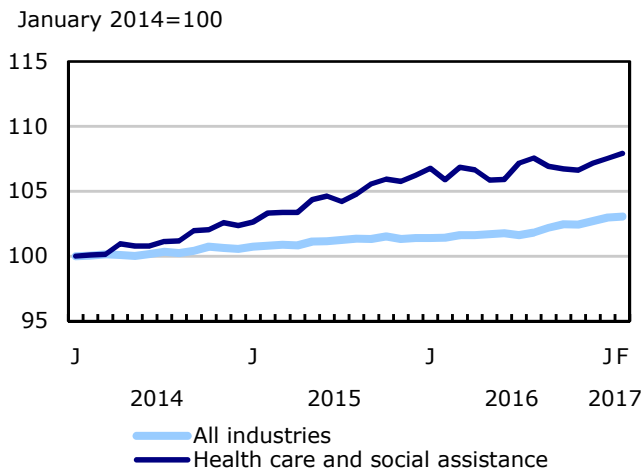
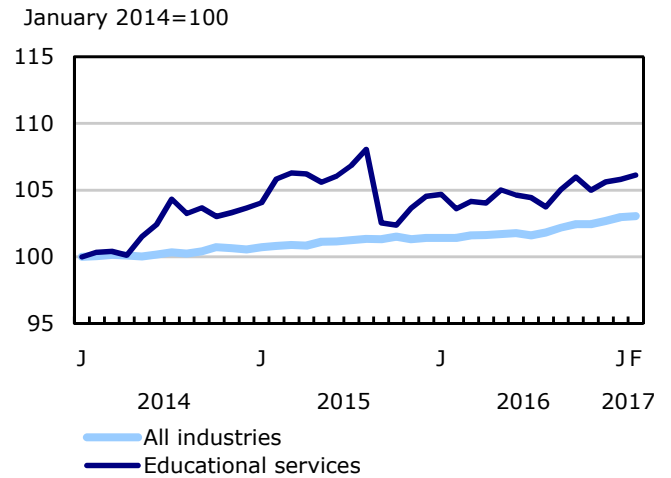
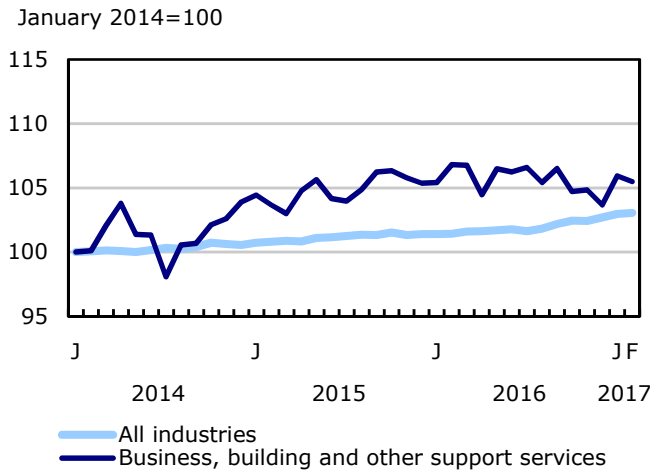
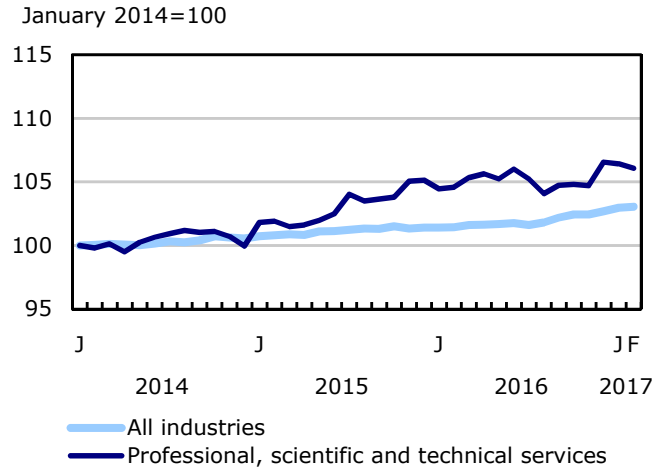
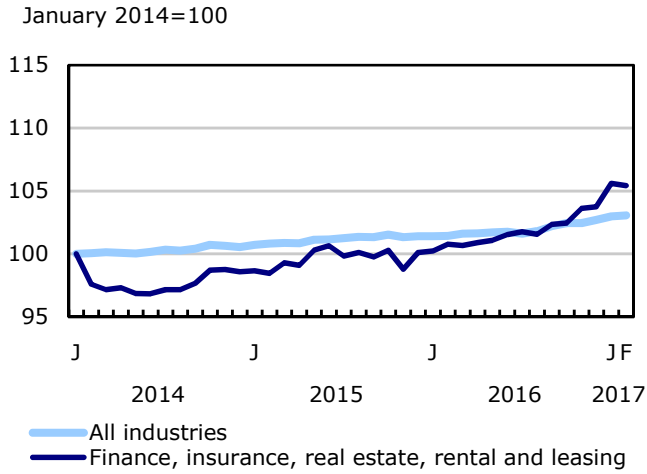


Chart 5
Employment indexes by industry, Canada, seasonally adjusted

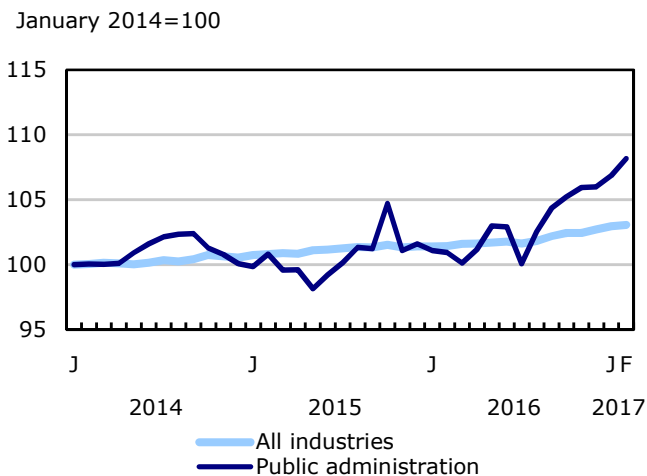
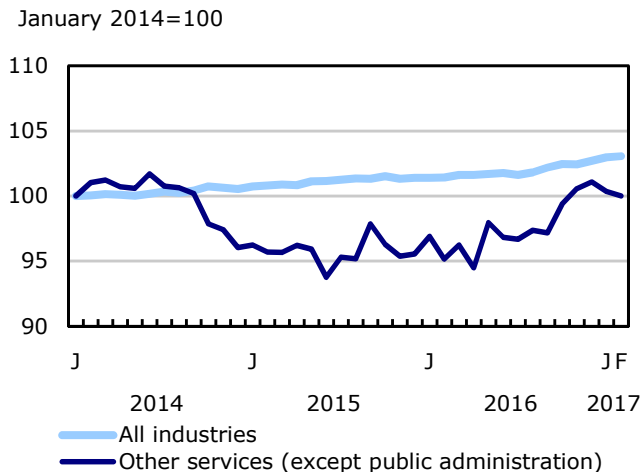
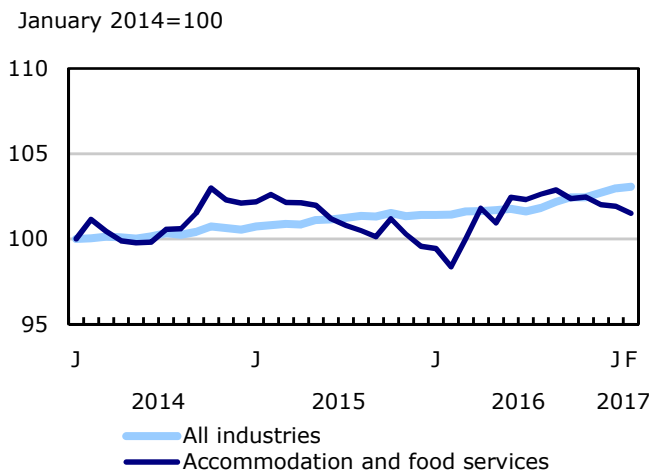


Chart 6
Employment indexes by province, Canada, seasonally adjusted

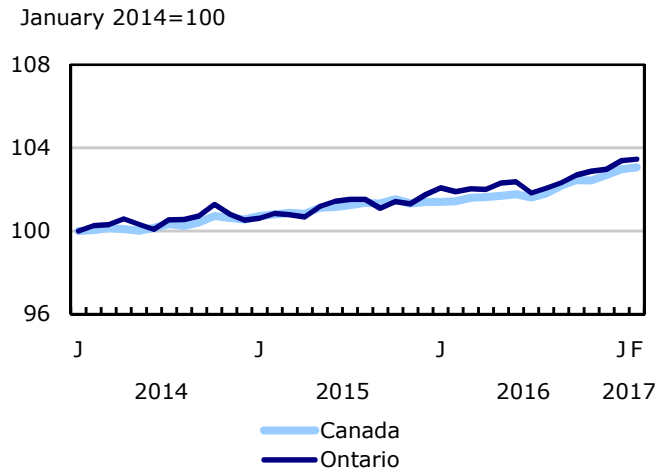
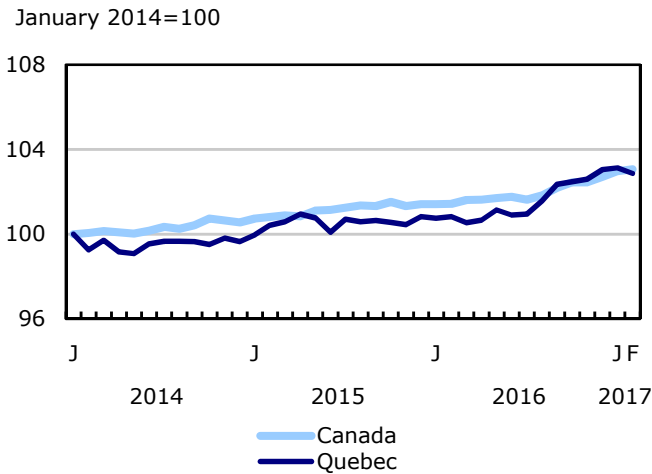
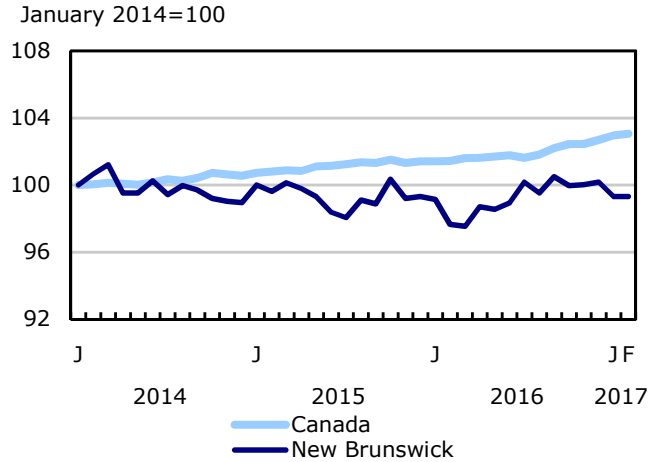
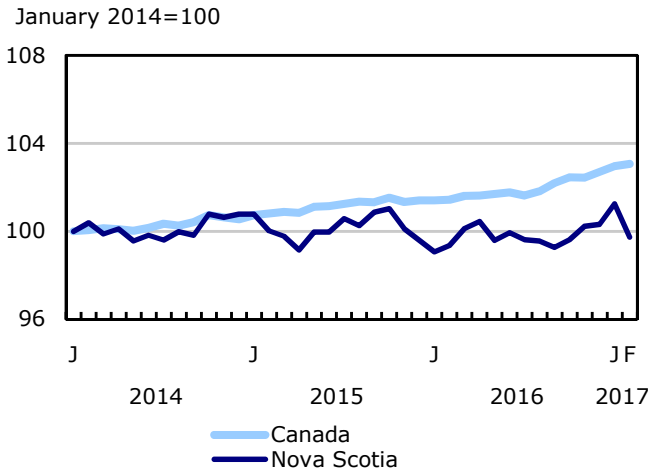
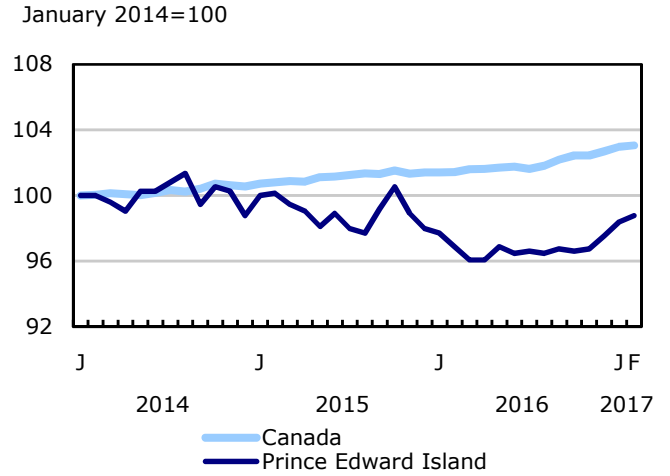
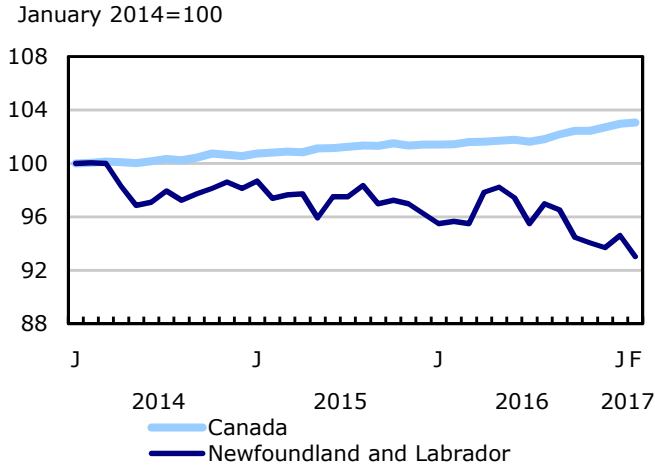


Chart 7
Employment indexes by province, Canada, seasonally adjusted

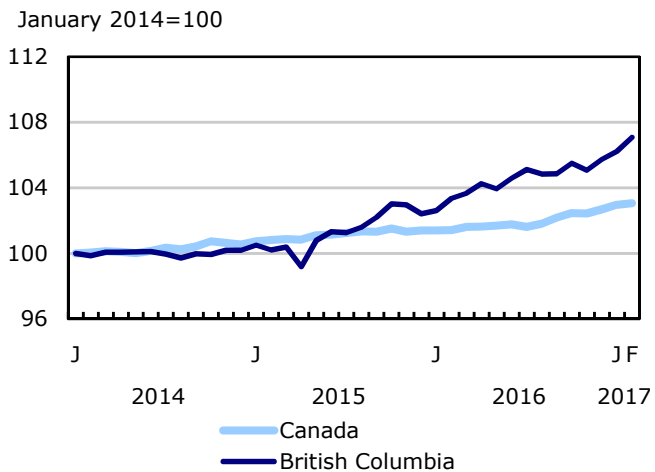
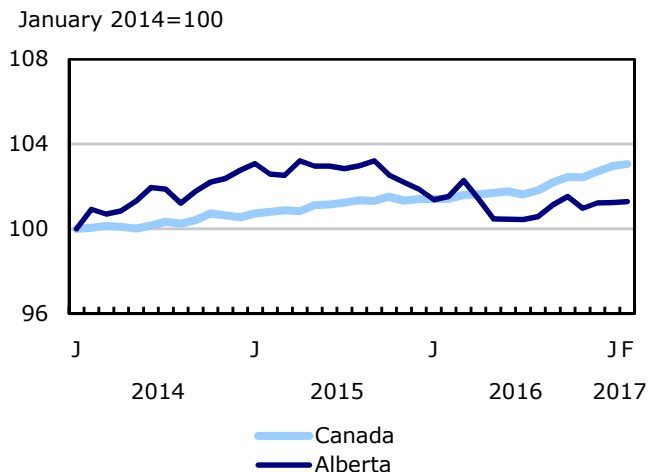
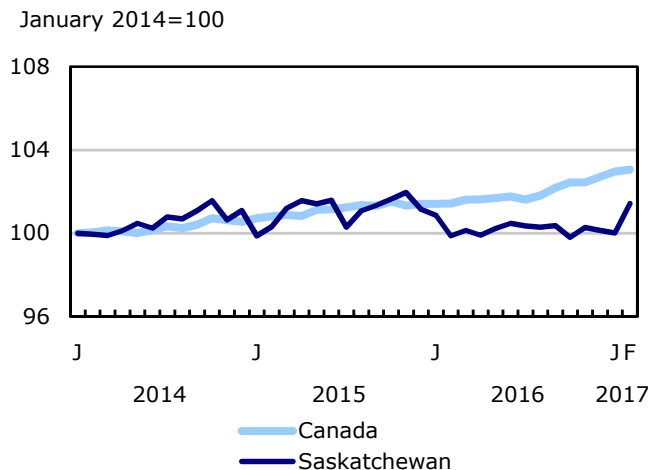
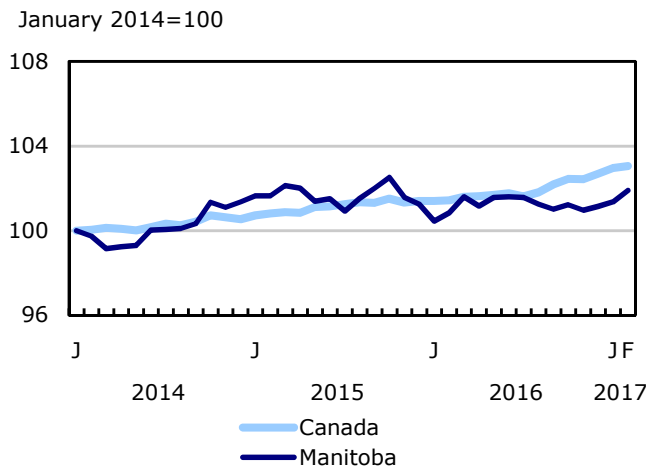
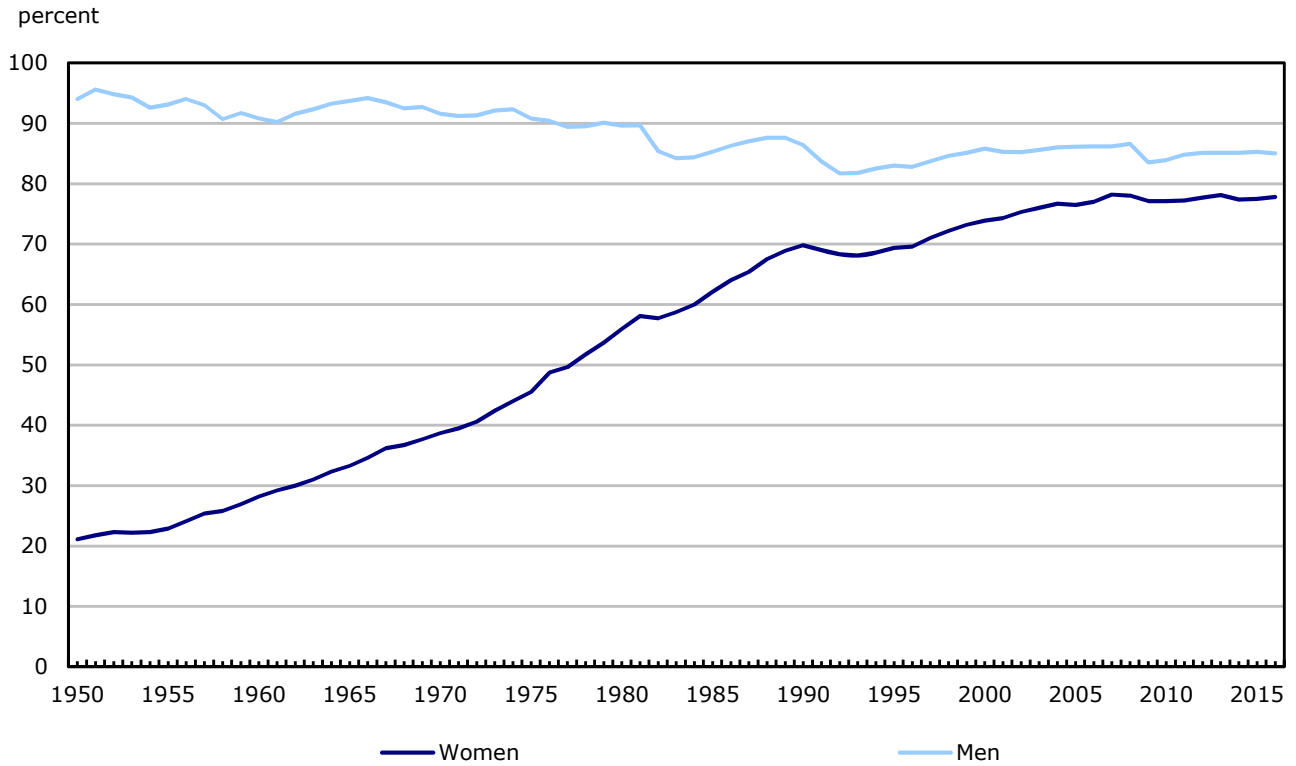


Chart 8
Canada 150 - Employment rate of women and men aged 25 to 54, 1950 to 2016



Source: Labour Force Survey (3701).

Related products

Selected publications from Statistics Canada

71-526-X	Methodology of the Canadian Labour Force Survey
71-543-G	Guide to the Labour Force Survey
71-587-X	Aboriginal Peoples Living Off-reserve in Western Canada: Estimates from the Labour Force Survey
71-588-X	The Aboriginal Labour Force Analysis Series
71-606-X	The Immigrant Labour Force Analysis Series
71F0031X	Improvements to the Labour Force Survey (LFS)
71M0001X	Labour Force Survey Microdata File

Selected CANSIM tables from Statistics Canada

279-0029	Work absence statistics of full-time employees by province, census metropolitan area (CMA) and sex, annual
279-0030	Work absence statistics of full-time employees by sex and North American Industry Classification System (NAICS), annual
279-0032	Work absence statistics of full-time employees by sex and age group, annual
279-0033	Work absence statistics of full-time employees by sex and presence of children, annual
279-0034	Work absence statistics of full-time employees by sex and job tenure, annual
279-0035	Work absence statistics of full-time employees by sex and public and private sector, annual
279-0036	Work absence statistics of full-time employees by sex and educational attainment, annual
279-0037	Work absence statistics of full-time employees by sex and workplace size, annual
279-0038	Work absence statistics of full-time employees by sex and job status, annual
279-0039	Work absence statistics of full-time employees by sex and union coverage, annual
279-0040	Work absence statistics of full-time employees by sex and National Occupational Classification (NOC), annual
282-0001	Labour force survey estimates (LFS), by sex and detailed age group, unadjusted for seasonality, monthly

282-0002	Labour force survey estimates (LFS), by sex and detailed age group, annual
282-0003	Labour force survey estimates (LFS), by educational attainment, sex and age group, unadjusted for seasonality, monthly
282-0004	Labour force survey estimates (LFS), by educational attainment, sex and age group, annual
282-0005	Labour force survey estimates (LFS), by full- and part-time students during school months, sex and age group, unadjusted for seasonality, monthly
282-0006	Labour force survey estimates (LFS), by students during summer months, sex and age group, unadjusted for seasonality, monthly
282-0007	Labour force survey estimates (LFS), by North American Industry Classification System (NAICS), sex and age group, unadjusted for seasonality, monthly
282-0008	Labour force survey estimates (LFS), by North American Industry Classification System (NAICS), sex and age group, annual
282-0011	Labour force survey estimates (LFS), employment by class of worker, North American Industry Classification System (NAICS) and sex, unadjusted for seasonality, monthly
282-0012	Labour force survey estimates (LFS), employment by class of worker, North American Industry Classification System (NAICS) and sex, annual
282-0013	Labour force survey estimates (LFS), part-time employment by reason for part-time work, sex and age group, unadjusted for seasonality, monthly
282-0014	Labour force survey estimates (LFS), part-time employment by reason for part-time work, sex and age group, annual
282-0015	Labour force survey estimates (LFS), by usual hours worked, main or all jobs, sex and age group, unadjusted for seasonality, monthly
282-0016	Labour force survey estimates (LFS), by usual hours worked, main or all jobs, sex and age group, annual
282-0017	Labour force survey estimates (LFS), by actual hours worked, main or all jobs, sex and age group, unadjusted for seasonality, monthly
282-0018	Labour force survey estimates (LFS), by actual hours worked, main or all jobs, sex and age group, annual
282-0019	Labour force survey estimates (LFS), by usual hours worked, class of worker, North American Industry Classification System (NAICS) and sex, unadjusted for seasonality, monthly
282-0020	Labour force survey estimates (LFS), by usual hours worked, class of worker, North American Industry Classification System (NAICS) and sex, annual
282-0021	Labour force survey estimates (LFS), by actual hours worked, class of worker, North American Industry Classification System (NAICS) and sex, unadjusted for seasonality, monthly
282-0022	Labour force survey estimates (LFS), by actual hours worked, class of worker, North American Industry Classification System (NAICS) and sex, annual

282-0027	Labour force survey estimates (LFS), by total and average usual and actual hours worked, main or all jobs, type of work, sex and age group, unadjusted for seasonality, monthly
282-0028	Labour force survey estimates (LFS), by total and average usual and actual hours worked, main or all jobs, type of work, sex and age group, annual
282-0031	Labour force survey estimates (LFS), multiple jobholders by North American Industry Classification System (NAICS), sex and age group, annual
282-0032	Labour force survey estimates (LFS), multiple jobholders by North American Industry Classification System (NAICS), sex and age group, unadjusted for seasonality, monthly
282-0035	Labour force survey estimates (LFS), multiple jobholders by usual hours worked at main and all jobs, unadjusted for seasonality, monthly
282-0036	Labour force survey estimates (LFS), multiple jobholders by usual hours worked at main and all jobs, annual
282-0037	Labour force survey estimates (LFS), job tenure by type of work, sex and age group, unadjusted for seasonality, monthly
282-0038	Labour force survey estimates (LFS), job tenure by type of work, sex and age group, annual
282-0041	Labour force survey estimates (LFS), job tenure by North American Industry Classification System (NAICS) and sex, unadjusted for seasonality, monthly
282-0042	Labour force survey estimates (LFS), job tenure by North American Industry Classification System (NAICS) and sex, annual
282-0047	Labour force survey estimates (LFS), duration of unemployment by sex and age group, unadjusted for seasonality, monthly
282-0048	Labour force survey estimates (LFS), duration of unemployment by sex and age group, annual
282-0049	Labour force survey estimates (LFS), unemployment by type of work sought and search method, sex and age group, unadjusted for seasonality, monthly
282-0050	Labour force survey estimates (LFS), unemployment by type of work sought and search method, sex and age group, annual
282-0051	Labour force survey estimates (LFS), retirement age by class of worker and sex, annual
282-0071	Labour force survey estimates (LFS), wages of employees by type of work, North American Industry Classification System (NAICS), sex and age group, unadjusted for seasonality, monthly
282-0072	Labour force survey estimates (LFS), wages of employees by type of work, North American Industry Classification System (NAICS), sex and age group, annual
282-0073	Labour force survey estimates (LFS), wages of employees by job permanence, union coverage, sex and age group, unadjusted for seasonality, monthly
282-0074	Labour force survey estimates (LFS), wages of employees by job permanence, union coverage, sex and age group, annual
282-0075	Labour force survey estimates (LFS), employees by establishment size, North American Industry Classification System (NAICS), sex and age group, unadjusted for seasonality, monthly

282-0076	Labour force survey estimates (LFS), employees by establishment size, North American Industry Classification System (NAICS), sex and age group, annual
282-0077	Labour force survey estimates (LFS), employees by union coverage, North American Industry Classification System (NAICS), sex and age group, unadjusted for seasonality, monthly
282-0078	Labour force survey estimates (LFS), employees by union coverage, North American Industry Classification System (NAICS), sex and age group, annual
282-0079	Labour force survey estimates (LFS), employees by job permanency, North American Industry Classification System (NAICS), sex and age group, unadjusted for seasonality, monthly
282-0080	Labour force survey estimates (LFS), employees by job permanency, North American Industry Classification System (NAICS), sex and age group, annual
282-0083	Labour force survey estimates (LFS), employees working overtime (weekly) by North American Industry Classification System (NAICS), sex and age group, unadjusted for seasonality, monthly
282-0084	Labour force survey estimates (LFS), employees working overtime (weekly) by North American Industry Classification System (NAICS), sex and age group, annual
282-0085	Labour force survey estimates (LFS), supplementary unemployment rates by sex and age group, unadjusted for seasonality, monthly
282-0086	Labour force survey estimates (LFS), supplementary unemployment rates by sex and age group, annual
282-0087	Labour force survey estimates (LFS), by sex and age group, seasonally adjusted and unadjusted, monthly
282-0088	Labour force survey estimates (LFS), employment by North American Industry Classification System (NAICS), seasonally adjusted and unadjusted, monthly
282-0089	Labour force survey estimates (LFS), employment by class of worker and sex, seasonally adjusted and unadjusted, monthly
282-0092	Labour force survey estimates (LFS), actual hours worked at main job by North American Industry Classification System (NAICS), seasonally adjusted, monthly
282-0094	Labour force survey estimates (LFS), by North American Industry Classification System (NAICS), Canada, seasonally adjusted, monthly
282-0095	Labour force survey estimates (LFS), by full- and part-time students during school months, sex and age group, annual
282-0100	Labour force survey estimates (LFS), by territories, sex and age group, 3-month moving average, seasonally adjusted and unadjusted, monthly
282-0101	Labour force survey estimates (LFS), by immigrant status, age group, Canada, regions, provinces and Montreal, Toronto, Vancouver census metropolitan areas, 3-month moving average, unadjusted for seasonality, monthly
282-0102	Labour force survey estimates (LFS), by immigrant status, age group, Canada, regions, provinces and Montreal, Toronto, Vancouver census metropolitan areas, annual

282-0103	Labour force survey estimates (LFS), by immigrant status, sex and detailed age group, Canada, 3-month moving average, unadjusted for seasonality, monthly
282-0104	Labour force survey estimates (LFS), by immigrant status, sex and detailed age group, Canada, annual
282-0105	Labour force survey estimates (LFS), by immigrant status, educational attainment, sex and age group, Canada, 3-month moving average, unadjusted for seasonality, monthly
282-0106	Labour force survey estimates (LFS), by immigrant status, educational attainment, sex and age group, Canada, annual
282-0107	Labour force survey estimates (LFS), by immigrant status, country of birth, sex and age group, Canada, 3-month moving average, unadjusted for seasonality, monthly
282-0108	Labour force survey estimates (LFS), by immigrant status, country of birth, sex and age group, Canada, annual
282-0122	Labour force survey estimates (LFS), by provinces and economic regions based on 2011 Census boundaries, 3-month moving average, unadjusted for seasonality, monthly
282-0123	Labour force survey estimates (LFS), by provinces, territories and economic regions based on 2011 Census boundaries, annual
282-0124	Labour force survey estimates (LFS), employment by economic region based on 2011 Census boundaries and North American Industry Classification System (NAICS), 3-month moving average, unadjusted for seasonality, monthly
282-0125	Labour force survey estimates (LFS), employment by economic region based on 2011 Census boundaries and North American Industry Classification System (NAICS), annual
282-0128	Labour force survey estimates (LFS), by census metropolitan area based on 2011 Census boundaries, sex and age group, 3-month moving average, unadjusted for seasonality, monthly
282-0129	Labour force survey estimates (LFS), by census metropolitan area based on 2011 Census boundaries, sex and age group, annual
282-0130	Labour force survey estimates (LFS), employment by census metropolitan area based on 2011 Census boundaries and North American Industry Classification System (NAICS), 3-month moving average, unadjusted for seasonality, monthly
282-0131	Labour force survey estimates (LFS), employment by census metropolitan area based on 2011 Census boundaries and North American Industry Classification System (NAICS), annual
282-0134	Labour force survey estimates (LFS), by selected census agglomerations based on 2011 Census boundaries, annual
282-0135	Labour force survey estimates (LFS), by census metropolitan area based on 2011 Census boundaries, 3-month moving average, seasonally adjusted and unadjusted, monthly
282-0136	Labour force survey estimates (LFS), by Montréal, Toronto and Vancouver census metropolitan areas based on 2011 Census boundaries, seasonally adjusted and unadjusted, monthly

282-0137	Labour force survey estimates (LFS), by population centres and rural areas based on 2011 Census boundaries, sex and age group, unadjusted for seasonality, monthly
282-0138	Labour force survey estimates (LFS), by population centres and rural areas based on 2011 Census boundaries, sex and age group, annual
282-0139	Labour force survey estimates (LFS), employment by population centres and rural areas based on 2011 Census boundaries, class of worker and North American Industry Classification System (NAICS), unadjusted for seasonality, monthly
282-0140	Labour force survey estimates (LFS), employment by population centres and rural areas based on 2011 Census boundaries, class of worker and North American Industry Classification System (NAICS), annual
282-0141	Labour force survey estimates (LFS), by National Occupational Classification (NOC) and sex, unadjusted for seasonality, monthly
282-0142	Labour force survey estimates (LFS), by National Occupational Classification (NOC) and sex, annual
282-0143	Labour force survey estimates (LFS), by usual hours worked, National Occupational Classification (NOC) and sex, unadjusted for seasonality, monthly
282-0144	Labour force survey estimates (LFS), by usual hours worked, National Occupational Classification (NOC) and sex, annual
282-0145	Labour force survey estimates (LFS), by actual hours worked, National Occupational Classification (NOC) and sex, unadjusted for seasonality, monthly
282-0146	Labour force survey estimates (LFS), by actual hours worked, National Occupational Classification (NOC) and sex, annual
282-0147	Labour force survey estimates (LFS), multiple jobholders by National Occupational Classification (NOC), sex and age group, unadjusted for seasonality, monthly
282-0148	Labour force survey estimates (LFS), multiple jobholders by National Occupational Classification (NOC), sex and age group, annual
282-0149	Labour force survey estimates (LFS), job tenure by National Occupational Classification (NOC) and sex, unadjusted for seasonality, monthly
282-0150	Labour force survey estimates (LFS), job tenure by National Occupational Classification (NOC) and sex, annual
282-0151	Labour force survey estimates (LFS), wages of employees by type of work, National Occupational Classification (NOC), sex, and age group, unadjusted for seasonality, monthly
282-0152	Labour force survey estimates (LFS), wages of employees by type of work, National Occupational Classification (NOC), sex, and age group, annual
282-0153	Labour force survey estimates (LFS), employees working overtime (weekly) by National Occupational Classification (NOC), sex and age group, unadjusted for seasonality, monthly
282-0154	Labour force survey estimates (LFS), employees working overtime (weekly) by National Occupational Classification (NOC), sex and age group, annual

282-0155	Labour force survey estimates (LFS), employment by National Occupational Classification (NOC), seasonally adjusted, monthly
282-0156	Labour force survey estimates (LFS), employment by economic region based on 2011 Census boundaries and National Occupational Classification (NOC), three-month moving average, unadjusted for seasonality, monthly
282-0157	Labour force survey estimates (LFS), employment by economic region based on 2011 Census boundaries and National Occupational Classification (NOC), annual
282-0158	Labour force survey estimates (LFS), employment by census metropolitan area based on 2011 Census boundaries and National Occupational Classification (NOC), three-month moving average, unadjusted for seasonality, monthly
282-0159	Labour force survey estimates (LFS), employment by census metropolitan area based on 2011 Census boundaries and National Occupational Classification (NOC), annual
282-0160	Labour force survey estimates (LFS), weekly wage distributions of employees by type of work, National Occupational Classification (NOC) and sex, unadjusted for seasonality, monthly
282-0161	Labour force survey estimates (LFS), weekly wage distributions of employees by type of work, National Occupational Classification (NOC) and sex, annual
282-0162	Labour force survey estimates (LFS), hourly wage distribution of employees by type of work, National Occupational Classification (NOC) and sex, unadjusted for seasonality, monthly
282-0163	Labour force survey estimates (LFS), hourly wage distribution of employees by type of work, National Occupational Classification (NOC) and sex, annual
282-0164	Labour force survey estimates (LFS), employees by union status and National Occupational Classification (NOC), Canada, annual
282-0165	Labour force survey estimates (LFS), employment by Aboriginal group, National Occupational Classification (NOC), sex and age group, annual
282-0166	Labour force survey estimates (LFS), employment by Aboriginal group, National Occupational Classification (NOC) and age group, Canada, selected provinces and regions, annual
282-0167	Labour force survey estimates (LFS), average usual hours and wages of employees by age group, sex, union coverage, job permanency, and National Occupational Classification (NOC), unadjusted for seasonality, monthly
282-0168	Labour force survey estimates (LFS), regional unemployment rates used by the Employment Insurance Program, three-month moving average, seasonally adjusted, monthly
282-0200	Labour force survey estimates (LFS), weekly wage distributions of employees by type of work, North American Industry Classification System (NAICS), and sex, unadjusted for seasonality, monthly
282-0201	Labour force survey estimates (LFS), weekly wage distributions of employees by type of work, North American Industry Classification System (NAICS), and sex, annual
282-0204	Labour force survey estimates (LFS), hourly wage distributions of employees by type of work, North American Industry Classification System (NAICS), and sex, unadjusted for seasonality, monthly

282-0205	Labour force survey estimates (LFS), hourly wage distributions of employees by type of work, North American Industry Classification System (NAICS), and sex, annual
282-0208	Labour force survey estimates (LFS), by educational degree, sex and age group, unadjusted for seasonality, monthly
282-0209	Labour force survey estimates (LFS), by educational degree, sex and age group, annual
282-0210	Labour force survey estimates (LFS), by family type and family age composition, unadjusted for seasonality, monthly
282-0211	Labour force survey estimates (LFS), by family type and family age composition, annual
282-0212	Labour force survey estimates (LFS), hours lost by employees by reason of absence, full and part week and sex, unadjusted for seasonality, monthly
282-0213	Labour force survey estimates (LFS), hours lost by employees by reason of absence, full and part week and sex, annual
282-0214	Labour force survey estimates (LFS), activity prior to unemployment by sex and age group, unadjusted for seasonality, monthly
282-0215	Labour force survey estimates (LFS), activity prior to unemployment, by sex and age group, annual
282-0216	Labour force survey estimates (LFS), reason for leaving job during previous year by sex and age group, unadjusted for seasonality, monthly
282-0217	Labour force survey estimates (LFS), reason for leaving job during previous year by sex and age group, annual
282-0218	Labour force survey estimates (LFS), reason for not looking for work, by sex and age group, unadjusted for seasonality, monthly
282-0219	Labour force survey estimates (LFS), reason for not looking for work, by sex and age group, annual
282-0220	Labour Force Survey estimates (LFS), employees by union status, sex and age group, Canada and provinces, annual
282-0221	Labour Force Survey estimates (LFS), employees by union status, sex, age group and education level, Canada, annual
282-0223	Labour Force Survey estimates (LFS), employees by union status, North American Industry Classification System (NAICS) and sex, Canada, annual
282-0224	Labour Force Survey estimates (LFS), employees by union status, establishment size, job tenure, type of work and job permanency, Canada, annual
282-0225	Labour Force Survey estimates (LFS), average weekly earnings, average hourly wage rate and average usual weekly hours by union status and type of work, Canada and provinces, annual
282-0226	Labour force survey estimates (LFS), by Aboriginal group, sex and age group, Canada, selected provinces and regions, annual

282-0227	Labour force survey estimates (LFS), by detailed Aboriginal group, sex and age group, Canada and selected regions, annual
282-0228	Labour force survey estimates (LFS), by Aboriginal group, educational attainment and age group, Canada and selected regions, annual
282-0229	Labour force survey estimates (LFS), employment by Aboriginal group, North American Industry Classification System (NAICS), sex and age group, annual
282-0230	Labour force survey estimates (LFS), employment by Aboriginal group, North American Industry Classification System (NAICS) and age group, Canada and selected regions, annual
282-0233	Labour force survey estimates (LFS), average hourly and weekly wages and average usual weekly hours by Aboriginal group and age group, Canada, selected provinces and regions, annual

Selected surveys from Statistics Canada

3701	Labour Force Survey
------	---------------------

Selected summary tables from Statistics Canada

- *Average hourly wages of employees by selected characteristics and occupation, unadjusted data, by province (monthly)*
- *Days lost per worker by industry and sex*
- *People employed, by educational attainment*
- *Reasons for part-time work by sex and age group*
- *Self-employment, historical summary*
- *Employment by age, sex, type of work, class of worker and province (monthly)*
- *Actual hours worked per week by industry, seasonally adjusted (monthly)*
- *Labour force characteristics, unadjusted, by territory (3 month moving average)*
- *Employment by industry and sex*
- *Full-time and part-time employment by sex and age group*
- *Labour force characteristics by age and sex*
- *Labour force characteristics by immigrant status of population aged 25 to 54, and by educational attainment*
- *Labour force characteristics by immigrant status, by detailed age group*

- *Labour force characteristics by immigrant status of population aged 25 to 54, by country of birth*
- *Days lost per worker due to illness or disability, by sex, by province*
- *Employment by industry*
- *Labour force characteristics, seasonally adjusted, by province (monthly)*
- *Labour force characteristics, unadjusted, by province (monthly)*
- *Labour force, employment and unemployment, levels and rates, by province*
- *Economic indicators, by province and territory (monthly and quarterly)*
- *Days lost per worker by reason, by provinces*
- *Labour force characteristics, seasonally adjusted, by census metropolitan area (3 month moving average)*
- *Labour force characteristics, unadjusted, by economic region (3 month moving average)*
- *Distribution of employed people, by industry, by province*
- *Employment by major industry group, seasonally adjusted, by province (monthly)*
- *Labour force characteristics*
- *Labour force characteristics, unadjusted, by census metropolitan area (3 month moving average)*
- *Labour force characteristics, population 15 years and older, by census metropolitan area*
- *Labour force characteristics, population 15 years and older, by economic region, by province*
- *Canada: Economic and financial data*
- *Labour force characteristics by sex and age group*
- *Labour force characteristics by immigrant status of population aged 25 to 54, by province*
- *Latest statistics (monthly)*

Statistical tables

Table 1
Labour force characteristics by age and sex, Canada, seasonally adjusted

	January 2017	February 2017	S.E. ¹	Change from			Percent change from		
				last month	last December	twelve months ago	last month	last December	twelve months ago
				in thousands (except rates)					
15 years and over, both sexes									
Population	29,741.9	29,764.3	...	22.4	46.4	298.9	0.1	0.2	1.0
Labour force	19,597.7	19,574.7	29.8	-23.0	8.1	174.5	-0.1	0.0	0.9
Employment	18,273.3	18,288.6	29.5	15.3	63.6	288.1	0.1	0.3	1.6
Employment full-time	14,693.6	14,798.7	40.5	105.1	120.9	235.4	0.7	0.8	1.6
Employment part-time	3,579.7	3,489.9	37.7	-89.8	-57.4	52.7	-2.5	-1.6	1.5
Unemployment	1,324.4	1,286.1	25.1	-38.3	-55.5	-113.6	-2.9	-4.1	-8.1
Participation rate	65.9	65.8	0.1	-0.1	0.0	0.0
Unemployment rate	6.8	6.6	0.1	-0.2	-0.3	-0.6
Employment rate	61.4	61.4	0.1	0.0	0.1	0.3
Part-time rate	19.6	19.1	0.2	-0.5	-0.4	0.0
15 to 24 years, both sexes									
Population	4,361.2	4,358.4	...	-2.8	-7.5	-44.2	-0.1	-0.2	-1.0
Labour force	2,819.4	2,783.8	17.3	-35.6	-19.6	-18.7	-1.3	-0.7	-0.7
Employment	2,444.8	2,438.1	16.1	-6.7	-13.3	8.3	-0.3	-0.5	0.3
Employment full-time	1,234.2	1,236.5	19.8	2.3	-11.7	-42.4	0.2	-0.9	-3.3
Employment part-time	1,210.6	1,201.6	20.8	-9.0	-1.6	50.7	-0.7	-0.1	4.4
Unemployment	374.6	345.7	14.6	-28.9	-6.3	-27.0	-7.7	-1.8	-7.2
Participation rate	64.6	63.9	0.4	-0.7	-0.3	0.2
Unemployment rate	13.3	12.4	0.5	-0.9	-0.2	-0.9
Employment rate	56.1	55.9	0.4	-0.2	-0.2	0.7
Part-time rate	49.5	49.3	0.8	-0.2	0.2	1.9
25 years and over, men									
Population	12,414.7	12,426.9	...	12.2	25.7	167.5	0.1	0.2	1.4
Labour force	8,871.6	8,869.5	15.6	-2.1	7.3	51.9	0.0	0.1	0.6
Employment	8,337.8	8,344.7	16.6	6.9	47.6	126.1	0.1	0.6	1.5
Employment full-time	7,605.3	7,607.0	22.6	1.7	39.2	61.1	0.0	0.5	0.8
Employment part-time	732.5	737.7	18.3	5.2	8.4	65.0	0.7	1.2	9.7
Unemployment	533.8	524.8	15.1	-9.0	-40.3	-74.3	-1.7	-7.1	-12.4
Participation rate	71.5	71.4	0.1	-0.1	-0.1	-0.5
Unemployment rate	6.0	5.9	0.2	-0.1	-0.5	-0.9
Employment rate	67.2	67.2	0.1	0.0	0.3	0.2
Part-time rate	8.8	8.8	0.2	0.1	0.1	0.7
25 years and over, women									
Population	12,966.0	12,979.0	...	13.0	28.2	175.6	0.1	0.2	1.4
Labour force	7,906.7	7,921.4	17.2	14.7	20.4	141.3	0.2	0.3	1.8
Employment	7,490.7	7,505.7	17.2	15.0	29.2	153.6	0.2	0.4	2.1
Employment full-time	5,854.1	5,955.2	26.6	101.1	93.5	216.6	1.7	1.6	3.8
Employment part-time	1,636.6	1,550.5	25.1	-86.1	-64.3	-63.1	-5.3	-4.0	-3.9
Unemployment	416.0	415.7	13.6	-0.3	-8.8	-12.3	-0.1	-2.1	-2.9
Participation rate	61.0	61.0	0.1	0.0	0.0	0.2
Unemployment rate	5.3	5.2	0.2	-0.1	-0.2	-0.3
Employment rate	57.8	57.8	0.1	0.0	0.1	0.4
Part-time rate	21.8	20.7	0.3	-1.2	-0.9	-1.3
25 to 54 years, both sexes									
Population	14,636.9	14,640.4	...	3.5	1.1	33.4	0.0	0.0	0.2
Labour force	12,729.4	12,734.6	22.4	5.2	33.7	77.3	0.0	0.3	0.6
Employment	12,019.5	12,030.9	24.4	11.4	68.8	160.8	0.1	0.6	1.4
Unemployment	710.0	703.6	18.8	-6.4	-35.3	-83.6	-0.9	-4.8	-10.6
Participation rate	87.0	87.0	0.2	0.0	0.2	0.3
Unemployment rate	5.6	5.5	0.1	-0.1	-0.3	-0.7
Employment rate	82.1	82.2	0.2	0.1	0.5	0.9
25 to 54 years, men									
Population	7,285.5	7,286.9	...	1.4	-0.4	14.0	0.0	0.0	0.2
Labour force	6,637.6	6,623.7	14.3	-13.9	-2.6	-5.5	-0.2	0.0	-0.1
Employment	6,248.2	6,241.2	16.4	-7.0	23.4	63.2	-0.1	0.4	1.0
Unemployment	389.4	382.5	13.7	-6.9	-26.0	-68.7	-1.8	-6.4	-15.2
Participation rate	91.1	90.9	0.2	-0.2	0.0	-0.2
Unemployment rate	5.9	5.8	0.2	-0.1	-0.4	-1.0
Employment rate	85.8	85.6	0.2	-0.2	0.3	0.7

See notes at the end of the table.

Table 1 – continued

Labour force characteristics by age and sex, Canada, seasonally adjusted

	January 2017	February 2017	S.E. ¹	Change from			Percent change from		
				last month	last December	twelve months ago	last month	last December	twelve months ago
in thousands (except rates)									
25 to 54 years, women									
Population	7,351.4	7,353.5	...	2.1	1.5	19.4	0.0	0.0	0.3
Labour force	6,091.8	6,110.9	16.6	19.1	36.2	82.7	0.3	0.6	1.4
Employment	5,771.3	5,789.7	17.2	18.4	45.4	97.5	0.3	0.8	1.7
Unemployment	320.6	321.1	12.6	0.5	-9.3	-14.9	0.2	-2.8	-4.4
Participation rate	82.9	83.1	0.2	0.2	0.5	0.9
Unemployment rate	5.3	5.3	0.2	0.0	-0.1	-0.3
Employment rate	78.5	78.7	0.2	0.2	0.6	1.1
55 years and over, both sexes									
Population	10,743.8	10,765.5	...	21.7	52.8	309.7	0.2	0.5	3.0
Labour force	4,048.9	4,056.3	19.0	7.4	-6.0	115.9	0.2	-0.1	2.9
Employment	3,809.1	3,819.5	18.9	10.4	7.9	118.9	0.3	0.2	3.2
Unemployment	239.9	236.8	10.2	-3.1	-13.9	-3.0	-1.3	-5.5	-1.3
Participation rate	37.7	37.7	0.2	0.0	-0.2	0.0
Unemployment rate	5.9	5.8	0.3	-0.1	-0.4	-0.3
Employment rate	35.5	35.5	0.2	0.0	-0.1	0.1
55 years and over, men									
Population	5,129.2	5,140.0	...	10.8	26.1	153.5	0.2	0.5	3.1
Labour force	2,234.0	2,245.8	12.5	11.8	9.8	57.3	0.5	0.4	2.6
Employment	2,089.6	2,103.5	12.5	13.9	24.1	62.9	0.7	1.2	3.1
Unemployment	144.4	142.3	7.6	-2.1	-14.3	-5.6	-1.5	-9.1	-3.8
Participation rate	43.6	43.7	0.2	0.1	0.0	-0.2
Unemployment rate	6.5	6.3	0.3	-0.2	-0.7	-0.5
Employment rate	40.7	40.9	0.2	0.2	0.2	0.0
55 years and over, women									
Population	5,614.6	5,625.5	...	10.9	26.6	156.2	0.2	0.5	2.9
Labour force	1,814.9	1,810.5	13.1	-4.4	-15.9	58.6	-0.2	-0.9	3.3
Employment	1,719.5	1,716.0	13.1	-3.5	-16.2	56.0	-0.2	-0.9	3.4
Unemployment	95.4	94.5	6.6	-0.9	0.4	2.5	-0.9	0.4	2.7
Participation rate	32.3	32.2	0.2	-0.1	-0.4	0.2
Unemployment rate	5.3	5.2	0.4	-0.1	0.0	-0.1
Employment rate	30.6	30.5	0.2	-0.1	-0.4	0.1

1. Average standard error of change in two consecutive months (see "Sampling Errors" in Data Quality for further explanations).

Note(s): Related CANSIM table 282-0087. The sum of individual categories may not always add to the total due to rounding.

Table 2
Employment by class of worker and industry, Canada, seasonally adjusted

	January 2017	February 2017	S.E. ¹	Change from			Percent change from		
				last month	last December	twelve months ago	last month	last December	twelve months ago
in thousands									
Class of worker									
Employees	15,527.1	15,537.1	35.8	10.0	50.0	330.9	0.1	0.3	2.2
Self-employed ²	2,746.2	2,751.5	25.3	5.3	13.5	-42.8	0.2	0.5	-1.5
Public/private sector employees									
Public sector employees	3,680.9	3,674.1	20.2	-6.8	0.9	77.9	-0.2	0.0	2.2
Private sector employees	11,846.3	11,863.0	35.8	16.7	49.1	253.0	0.1	0.4	2.2
Industry	18,273.3	18,288.6	29.5	15.3	63.6	288.1	0.1	0.3	1.6
Goods-producing sector	3,831.5	3,816.7	16.4	-14.8	-9.2	-77.2	-0.4	-0.2	-2.0
Agriculture	284.9	282.6	5.5	-2.3	-0.8	-8.8	-0.8	-0.3	-3.0
Forestry, fishing, mining, quarrying, oil and gas extraction ³	325.2	326.5	5.0	1.3	3.8	-14.5	0.4	1.2	-4.3
Utilities	137.3	137.2	2.6	-0.1	-3.1	-0.5	-0.1	-2.2	-0.4
Construction	1,402.1	1,393.6	11.2	-8.5	-3.3	-3.9	-0.6	-0.2	-0.3
Manufacturing	1,682.0	1,676.8	10.9	-5.2	-5.8	-49.6	-0.3	-0.3	-2.9
Services-producing sector	14,441.8	14,471.9	28.1	30.1	72.7	365.3	0.2	0.5	2.6
Wholesale and retail trade	2,759.6	2,778.7	14.8	19.1	16.4	35.2	0.7	0.6	1.3
Transportation and warehousing	922.9	931.7	8.3	8.8	20.2	33.9	1.0	2.2	3.8
Finance, insurance, real estate, rental and leasing	1,169.9	1,168.1	8.7	-1.8	18.7	51.7	-0.2	1.6	4.6
Professional, scientific and technical services	1,411.5	1,407.0	11.0	-4.5	-6.3	19.8	-0.3	-0.4	1.4
Business, building and other support services	768.3	765.0	10.5	-3.3	13.1	-9.6	-0.4	1.7	-1.2
Educational services	1,283.0	1,287.0	10.7	4.0	6.3	30.5	0.3	0.5	2.4
Health care and social assistance	2,358.8	2,367.1	11.0	8.3	16.2	44.4	0.4	0.7	1.9
Information, culture and recreation	787.5	783.3	10.4	-4.2	-16.7	18.6	-0.5	-2.1	2.4
Accommodation and food services	1,218.4	1,213.3	11.4	-5.1	-6.2	37.4	-0.4	-0.5	3.2
Other services (except public administration)	798.3	795.5	8.3	-2.8	-8.6	38.5	-0.4	-1.1	5.1
Public administration	963.5	975.4	7.4	11.9	19.7	65.2	1.2	2.1	7.2

1. Average standard error of change in two consecutive months (see "Sampling Errors" in Data Quality for further explanations).

2. Includes both incorporated and unincorporated working owners, self-employed persons who do not have a business and persons working in a family business without pay.

3. Also referred to as Natural resources.

Note(s): Related CANSIM Tables 282-0088, 282-0089. The sum of individual categories may not always add to the total due to rounding.

Table 3
Labour force characteristics by province, seasonally adjusted

	January 2017	February 2017	S.E. ¹	Change from			Percent change from		
				last month	last December	twelve months ago	last month	last December	twelve months ago
in thousands (except rates)									
Newfoundland and Labrador									
Population	445.2	445.4	...	0.2	0.4	1.9	0.0	0.1	0.4
Labour force	265.9	262.8	2.1	-3.1	-4.8	-6.6	-1.2	-1.8	-2.4
Employment	229.3	225.5	2.2	-3.8	-1.6	-6.4	-1.7	-0.7	-2.8
Employment full-time	191.2	190.1	2.6	-1.1	1.2	-4.6	-0.6	0.6	-2.4
Employment part-time	38.2	35.4	2.2	-2.8	-2.8	-1.8	-7.3	-7.3	-4.8
Unemployment	36.6	37.3	2.1	0.7	-3.2	-0.1	1.9	-7.9	-0.3
Participation rate	59.7	59.0	0.5	-0.7	-1.1	-1.7
Unemployment rate	13.8	14.2	0.7	0.4	-0.9	0.3
Employment rate	51.5	50.6	0.5	-0.9	-0.4	-1.7
Prince Edward Island									
Population	122.6	122.8	...	0.2	0.4	1.6	0.2	0.3	1.3
Labour force	80.7	81.1	0.6	0.4	0.5	0.6	0.5	0.6	0.7
Employment	72.7	73.0	0.7	0.3	0.9	1.4	0.4	1.2	2.0
Employment full-time	61.5	62.2	0.8	0.7	3.2	1.3	1.1	5.4	2.1
Employment part-time	11.3	10.8	0.7	-0.5	-2.3	0.0	-4.4	-17.6	0.0
Unemployment	7.9	8.1	0.6	0.2	-0.4	-0.8	2.5	-4.7	-9.0
Participation rate	65.8	66.0	0.5	0.2	0.2	-0.4
Unemployment rate	9.8	10.0	0.7	0.2	-0.5	-1.1
Employment rate	59.3	59.4	0.5	0.1	0.5	0.3
Nova Scotia									
Population	790.3	790.5	...	0.2	0.5	3.1	0.0	0.1	0.4
Labour force	490.5	485.0	2.5	-5.5	-3.9	-3.8	-1.1	-0.8	-0.8
Employment	452.7	445.9	2.7	-6.8	-2.6	1.7	-1.5	-0.6	0.4
Employment full-time	363.5	362.3	3.5	-1.2	7.2	-2.7	-0.3	2.0	-0.7
Employment part-time	89.2	83.7	3.2	-5.5	-9.7	4.4	-6.2	-10.4	5.5
Unemployment	37.9	39.1	2.3	1.2	-1.3	-5.5	3.2	-3.2	-12.3
Participation rate	62.1	61.4	0.3	-0.7	-0.5	-0.7
Unemployment rate	7.7	8.1	0.5	0.4	-0.2	-1.0
Employment rate	57.3	56.4	0.3	-0.9	-0.4	0.0
New Brunswick									
Population	624.0	624.0	...	0.0	0.1	1.4	0.0	0.0	0.2
Labour force	386.6	386.3	2.2	-0.3	-5.2	2.6	-0.1	-1.3	0.7
Employment	351.9	351.9	2.2	0.0	-3.0	5.9	0.0	-0.8	1.7
Employment full-time	300.2	301.3	2.8	1.1	2.3	8.8	0.4	0.8	3.0
Employment part-time	51.7	50.6	2.4	-1.1	-5.4	-2.9	-2.1	-9.6	-5.4
Unemployment	34.6	34.5	2.1	-0.1	-2.1	-3.2	-0.3	-5.7	-8.5
Participation rate	62.0	61.9	0.4	-0.1	-0.9	0.3
Unemployment rate	8.9	8.9	0.5	0.0	-0.4	-0.9
Employment rate	56.4	56.4	0.4	0.0	-0.5	0.8
Quebec									
Population	6,909.7	6,912.1	...	2.4	6.2	42.8	0.0	0.1	0.6
Labour force	4,482.1	4,478.2	14.8	-3.9	-15.1	36.9	-0.1	-0.3	0.8
Employment	4,202.6	4,191.5	15.5	-11.1	-7.7	83.0	-0.3	-0.2	2.0
Employment full-time	3,390.5	3,380.0	21.6	-10.5	-16.1	54.8	-0.3	-0.5	1.6
Employment part-time	812.1	811.5	19.5	-0.6	8.4	28.1	-0.1	1.0	3.6
Unemployment	279.5	286.7	13.3	7.2	-7.4	-46.0	2.6	-2.5	-13.8
Participation rate	64.9	64.8	0.2	-0.1	-0.3	0.1
Unemployment rate	6.2	6.4	0.3	0.2	-0.1	-1.1
Employment rate	60.8	60.6	0.2	-0.2	-0.2	0.8
Ontario									
Population	11,604.3	11,615.2	...	10.9	23.8	149.2	0.1	0.2	1.3
Labour force	7,559.9	7,549.0	20.7	-10.9	23.4	73.3	-0.1	0.3	1.0
Employment	7,075.2	7,079.8	19.7	4.6	33.4	107.5	0.1	0.5	1.5
Employment full-time	5,695.4	5,748.6	26.6	53.2	58.5	100.7	0.9	1.0	1.8
Employment part-time	1,379.8	1,331.2	25.2	-48.6	-25.1	6.8	-3.5	-1.9	0.5
Unemployment	484.8	469.2	16.4	-15.6	-10.0	-34.1	-3.2	-2.1	-6.8
Participation rate	65.1	65.0	0.2	-0.1	0.1	-0.2
Unemployment rate	6.4	6.2	0.2	-0.2	-0.2	-0.5
Employment rate	61.0	61.0	0.2	0.0	0.2	0.2

See notes at the end of the table.

Table 3 – continued

Labour force characteristics by province, seasonally adjusted

	January 2017	February 2017	S.E. ¹	Change from			Percent change from		
				last month	last December	twelve months ago	last month	last December	twelve months ago
in thousands (except rates)									
Manitoba									
Population	1,006.1	1,007.4	...	1.3	3.0	13.4	0.1	0.3	1.3
Labour force	675.6	677.2	2.6	1.6	1.9	5.9	0.2	0.3	0.9
Employment	634.3	637.7	2.6	3.4	4.7	6.6	0.5	0.7	1.0
Employment full-time	513.1	517.0	3.6	3.9	7.6	7.8	0.8	1.5	1.5
Employment part-time	121.2	120.7	3.3	-0.5	-2.9	-1.2	-0.4	-2.3	-1.0
Unemployment	41.3	39.5	2.0	-1.8	-2.8	-0.7	-4.4	-6.6	-1.7
Participation rate	67.2	67.2	0.3	0.0	0.0	-0.3
Unemployment rate	6.1	5.8	0.3	-0.3	-0.5	-0.2
Employment rate	63.0	63.3	0.3	0.3	0.3	-0.2
Saskatchewan									
Population	872.7	873.4	...	0.7	0.9	7.6	0.1	0.1	0.9
Labour force	606.3	612.5	2.6	6.2	4.4	9.4	1.0	0.7	1.6
Employment	567.5	575.5	2.6	8.0	7.3	8.8	1.4	1.3	1.6
Employment full-time	463.6	469.9	3.4	6.3	3.3	3.2	1.4	0.7	0.7
Employment part-time	103.9	105.6	3.1	1.7	4.0	5.5	1.6	3.9	5.5
Unemployment	38.8	36.9	2.2	-1.9	-3.0	0.5	-4.9	-7.5	1.4
Participation rate	69.5	70.1	0.3	0.6	0.4	0.4
Unemployment rate	6.4	6.0	0.3	-0.4	-0.6	0.0
Employment rate	65.0	65.9	0.3	0.9	0.8	0.4
Alberta									
Population	3,411.4	3,414.2	...	2.8	4.6	28.6	0.1	0.1	0.8
Labour force	2,487.8	2,473.7	9.4	-14.1	-5.5	5.6	-0.6	-0.2	0.2
Employment	2,267.6	2,268.9	10.1	1.3	1.5	-5.3	0.1	0.1	-0.2
Employment full-time	1,821.8	1,841.1	13.7	19.3	-5.0	-23.1	1.1	-0.3	-1.2
Employment part-time	445.8	427.8	12.4	-18.0	6.6	17.8	-4.0	1.6	4.3
Unemployment	220.1	204.8	8.8	-15.3	-7.1	10.9	-7.0	-3.4	5.6
Participation rate	72.9	72.5	0.3	-0.4	-0.2	-0.4
Unemployment rate	8.8	8.3	0.3	-0.5	-0.2	0.4
Employment rate	66.5	66.5	0.3	0.0	0.0	-0.7
British Columbia									
Population	3,955.7	3,959.4	...	3.7	6.6	49.4	0.1	0.2	1.3
Labour force	2,562.3	2,568.9	10.6	6.6	12.5	50.4	0.3	0.5	2.0
Employment	2,419.4	2,438.8	10.4	19.4	30.6	84.9	0.8	1.3	3.6
Employment full-time	1,892.8	1,926.2	14.6	33.4	58.8	89.1	1.8	3.1	4.9
Employment part-time	526.6	512.7	14.0	-13.9	-28.1	-4.0	-2.6	-5.2	-0.8
Unemployment	142.9	130.1	9.0	-12.8	-18.1	-34.5	-9.0	-12.2	-21.0
Participation rate	64.8	64.9	0.3	0.1	0.2	0.5
Unemployment rate	5.6	5.1	0.3	-0.5	-0.7	-1.4
Employment rate	61.2	61.6	0.3	0.4	0.7	1.4

1. Average standard error of change in two consecutive months (see "Sampling Errors" in Data Quality for further explanations).

Note(s): Related CANSIM Table 282-0087. The sum of individual categories may not always add to the total due to rounding.

Table 4-1
Selected labour force characteristics (seasonally adjusted) — Newfoundland and Labrador

	January 2017	February 2017	S.E. ¹	Change from			Percent change from		
				last month	last December	twelve months ago	last month	last December	twelve months ago
in thousands (except rates)									
Both sexes, 15 years and over									
Population	445.2	445.4	...	0.2	0.4	1.9	0.0	0.1	0.4
Labour force	265.9	262.8	2.1	-3.1	-4.8	-6.6	-1.2	-1.8	-2.4
Employment	229.3	225.5	2.2	-3.8	-1.6	-6.4	-1.7	-0.7	-2.8
Employment full-time	191.2	190.1	2.6	-1.1	1.2	-4.6	-0.6	0.6	-2.4
Unemployment	36.6	37.3	2.1	0.7	-3.2	-0.1	1.9	-7.9	-0.3
Participation rate	59.7	59.0	0.5	-0.7	-1.1	-1.7
Unemployment rate	13.8	14.2	0.7	0.4	-0.9	0.3
Employment rate	51.5	50.6	0.5	-0.9	-0.4	-1.7
Part-time rate	16.7	15.7	0.9	-1.0	-1.1	-0.3
Both sexes, 15 to 24 years									
Population	55.0	55.0	...	0.0	0.0	-0.6	0.0	0.0	-1.1
Labour force	35.0	32.9	1.0	-2.1	-4.1	-3.6	-6.0	-11.1	-9.9
Employment	28.1	27.3	1.0	-0.8	-1.4	-4.1	-2.8	-4.9	-13.1
Unemployment	6.9	5.6	0.9	-1.3	-2.7	0.4	-18.8	-32.5	7.7
Participation rate	63.6	59.8	1.8	-3.8	-7.5	-5.8
Unemployment rate	19.7	17.0	2.5	-2.7	-5.4	2.8
Employment rate	51.1	49.6	1.7	-1.5	-2.6	-6.9
Part-time rate	44.5	48.0	3.5	3.5	-1.1	1.5
Men, 25 years and over									
Population	190.1	190.2	...	0.1	0.2	1.1	0.1	0.1	0.6
Labour force	120.0	119.3	1.2	-0.7	-0.1	-3.1	-0.6	-0.1	-2.5
Employment	100.5	98.4	1.4	-2.1	-0.4	-3.3	-2.1	-0.4	-3.2
Unemployment	19.4	20.9	1.4	1.5	0.3	0.2	7.7	1.5	1.0
Participation rate	63.1	62.7	0.7	-0.4	-0.1	-2.0
Unemployment rate	16.2	17.5	1.1	1.3	0.2	0.6
Employment rate	52.9	51.7	0.8	-1.2	-0.3	-2.1
Part-time rate	7.7	6.4	1.0	-1.3	-0.3	1.9
Women, 25 years and over									
Population	200.0	200.1	...	0.1	0.2	1.3	0.1	0.1	0.7
Labour force	110.9	110.6	1.2	-0.3	-0.6	0.1	-0.3	-0.5	0.1
Employment	100.7	99.9	1.2	-0.8	0.3	1.0	-0.8	0.3	1.0
Unemployment	10.3	10.7	1.1	0.4	-0.9	-0.9	3.9	-7.8	-7.8
Participation rate	55.5	55.3	0.6	-0.2	-0.3	-0.3
Unemployment rate	9.3	9.7	0.9	0.4	-0.7	-0.8
Employment rate	50.4	49.9	0.6	-0.5	0.1	0.2
Part-time rate	17.8	16.0	1.4	-1.8	-1.7	-2.2
Industry									
	229.3	225.5	2.2	-3.8	-1.6	-6.4	-1.7	-0.7	-2.8
Goods-producing sector									
Agriculture	48.3	46.9	1.5	-1.4	0.4	-4.0	-2.9	0.9	-7.9
Forestry, fishing, mining, quarrying, oil and gas extraction ²	0.9	2.2	0.4	1.3	1.1	1.0	144.4	100.0	83.3
Utilities	13.7	12.1	0.8	-1.6	-0.3	-2.8	-11.7	-2.4	-18.8
Construction	2.8	2.9	0.2	0.1	0.2	0.4	3.6	7.4	16.0
Manufacturing	21.7	21.0	1.0	-0.7	-0.2	-0.6	-3.2	-0.9	-2.8
	9.1	8.7	0.8	-0.4	-0.3	-1.9	-4.4	-3.3	-17.9
Services-producing sector									
Wholesale and retail trade	181.0	178.6	1.8	-2.4	-2.0	-2.4	-1.3	-1.1	-1.3
Transportation and warehousing	41.5	40.7	1.0	-0.8	-0.6	-3.5	-1.9	-1.5	-7.9
Finance, insurance, real estate, rental and leasing	10.3	10.7	0.5	0.4	0.7	1.8	3.9	7.0	20.2
Professional, scientific and technical services	7.3	6.7	0.4	-0.6	-0.9	-1.8	-8.2	-11.8	-21.2
Business, building and other support services	10.7	10.7	0.4	0.0	-0.2	0.0	0.0	-1.8	0.0
Educational services	6.5	6.3	0.5	-0.2	-0.2	-0.7	-3.1	-3.1	-10.0
Health care and social assistance	14.6	14.1	0.6	-0.5	-1.0	0.1	-3.4	-6.6	0.7
Information, culture and recreation	40.5	39.3	0.8	-1.2	-0.5	1.1	-3.0	-1.3	2.9
Accommodation and food services	8.0	7.6	0.6	-0.4	0.2	0.2	-5.0	2.7	2.7
Other services (except public administration)	14.8	13.6	0.8	-1.2	-1.3	-1.7	-8.1	-8.7	-11.1
Public administration	11.8	13.0	0.6	1.2	1.3	0.4	10.2	11.1	3.2
	15.1	15.9	0.6	0.8	0.5	1.6	5.3	3.2	11.2

1. Average standard error of change in two consecutive months (see "Sampling Errors" in Data Quality for further explanations).

2. Also referred to as Natural resources.

Note(s): Related CANSIM Tables 282-0087, 282-0088. The sum of individual categories may not always add to the total due to rounding.

Table 4-2
Selected labour force characteristics (seasonally adjusted) — Prince Edward Island

	January 2017	February 2017	S.E. ¹	Change from			Percent change from		
				last month	last December	twelve months ago	last month	last December	twelve months ago
in thousands (except rates)									
Both sexes, 15 years and over									
Population	122.6	122.8	...	0.2	0.4	1.6	0.2	0.3	1.3
Labour force	80.7	81.1	0.6	0.4	0.5	0.6	0.5	0.6	0.7
Employment	72.7	73.0	0.7	0.3	0.9	1.4	0.4	1.2	2.0
Employment full-time	61.5	62.2	0.8	0.7	3.2	1.3	1.1	5.4	2.1
Unemployment	7.9	8.1	0.6	0.2	-0.4	-0.8	2.5	-4.7	-9.0
Participation rate	65.8	66.0	0.5	0.2	0.2	-0.4
Unemployment rate	9.8	10.0	0.7	0.2	-0.5	-1.1
Employment rate	59.3	59.4	0.5	0.1	0.5	0.3
Part-time rate	15.5	14.8	1.0	-0.7	-3.4	-0.3
Both sexes, 15 to 24 years									
Population	17.7	17.7	...	0.0	0.0	-0.3	0.0	0.0	-1.7
Labour force	12.5	12.6	0.3	0.1	0.2	-0.1	0.8	1.6	-0.8
Employment	10.8	10.6	0.4	-0.2	-0.1	-0.1	-1.9	-0.9	-0.9
Unemployment	1.7	2.0	0.3	0.3	0.3	0.1	17.6	17.6	5.3
Participation rate	70.6	71.2	1.9	0.6	1.1	0.6
Unemployment rate	13.6	15.9	2.5	2.3	2.2	0.9
Employment rate	61.0	59.9	2.0	-1.1	-0.6	0.5
Part-time rate	44.4	43.4	3.6	-1.0	-3.3	4.1
Men, 25 years and over									
Population	50.3	50.4	...	0.1	0.2	0.9	0.2	0.4	1.8
Labour force	35.2	35.4	0.3	0.2	0.1	0.7	0.6	0.3	2.0
Employment	31.2	31.4	0.4	0.2	0.5	0.7	0.6	1.6	2.3
Unemployment	4.0	4.0	0.4	0.0	-0.4	0.0	0.0	-9.1	0.0
Participation rate	70.0	70.2	0.7	0.2	-0.1	0.1
Unemployment rate	11.4	11.3	1.1	-0.1	-1.2	-0.2
Employment rate	62.0	62.3	0.8	0.3	0.7	0.3
Part-time rate	5.8	4.8	1.1	-1.0	-3.6	-2.4
Women, 25 years and over									
Population	54.6	54.7	...	0.1	0.2	0.9	0.2	0.4	1.7
Labour force	32.9	33.1	0.3	0.2	0.2	0.0	0.6	0.6	0.0
Employment	30.8	31.0	0.4	0.2	0.5	0.8	0.6	1.6	2.6
Unemployment	2.2	2.1	0.3	-0.1	-0.3	-0.8	-4.5	-12.5	-27.6
Participation rate	60.3	60.5	0.6	0.2	0.1	-1.0
Unemployment rate	6.7	6.3	1.0	-0.4	-1.0	-2.5
Employment rate	56.4	56.7	0.7	0.3	0.7	0.6
Part-time rate	14.9	15.2	1.5	0.2	-2.9	0.6
Industry									
Industry	72.7	73.0	0.7	0.3	0.9	1.4	0.4	1.2	2.0
Goods-producing sector									
Goods-producing sector	16.9	17.0	0.5	0.1	0.8	-0.3	0.6	4.9	-1.7
Agriculture	3.3	3.1	0.3	-0.2	0.2	-0.2	-6.1	6.9	-6.1
Forestry, fishing, mining, quarrying, oil and gas extraction ²	2.1	2.5	0.2	0.4	0.2	0.3	19.0	8.7	13.6
Utilities	0.2	0.2	0.1	0.0	-0.1	-0.2	0.0	-33.3	-50.0
Construction	5.0	5.1	0.3	0.1	0.3	0.3	2.0	6.3	6.3
Manufacturing	6.2	6.1	0.2	-0.1	0.1	-0.5	-1.6	1.7	-7.6
Services-producing sector									
Services-producing sector	55.8	56.0	0.6	0.2	0.1	1.7	0.4	0.2	3.1
Wholesale and retail trade	10.5	10.4	0.3	-0.1	0.0	-0.1	-1.0	0.0	-1.0
Transportation and warehousing	2.9	2.9	0.2	0.0	0.1	0.4	0.0	3.6	16.0
Finance, insurance, real estate, rental and leasing	2.7	2.5	0.1	-0.2	-0.3	-0.1	-7.4	-10.7	-3.8
Professional, scientific and technical services	3.1	3.5	0.2	0.4	0.2	0.0	12.9	6.1	0.0
Business, building and other support services	2.2	2.1	0.2	-0.1	-0.2	-0.1	-4.5	-8.7	-4.5
Educational services	5.6	5.4	0.2	-0.2	-0.1	-0.1	-3.6	-1.8	-1.8
Health care and social assistance	10.3	10.4	0.3	0.1	0.3	0.6	1.0	3.0	6.1
Information, culture and recreation	2.7	2.7	0.2	0.0	-0.2	0.3	0.0	-6.9	12.5
Accommodation and food services	5.6	5.8	0.3	0.2	0.2	0.4	3.6	3.6	7.4
Other services (except public administration)	3.2	3.3	0.2	0.1	-0.2	0.2	3.1	-5.7	6.5
Public administration	6.8	7.0	0.2	0.2	0.3	0.3	2.9	4.5	4.5

1. Average standard error of change in two consecutive months (see "Sampling Errors" in Data Quality for further explanations).

2. Also referred to as Natural resources.

Note(s): Related CANSIM Tables 282-0087, 282-0088. The sum of individual categories may not always add to the total due to rounding.

Table 4-3
Selected labour force characteristics (seasonally adjusted) — Nova Scotia

	January 2017	February 2017	S.E. ¹	Change from			Percent change from		
				last month	last December	twelve months ago	last month	last December	twelve months ago
in thousands (except rates)									
Both sexes, 15 years and over									
Population	790.3	790.5	...	0.2	0.5	3.1	0.0	0.1	0.4
Labour force	490.5	485.0	2.5	-5.5	-3.9	-3.8	-1.1	-0.8	-0.8
Employment	452.7	445.9	2.7	-6.8	-2.6	1.7	-1.5	-0.6	0.4
Employment full-time	363.5	362.3	3.5	-1.2	7.2	-2.7	-0.3	2.0	-0.7
Unemployment	37.9	39.1	2.3	1.2	-1.3	-5.5	3.2	-3.2	-12.3
Participation rate	62.1	61.4	0.3	-0.7	-0.5	-0.7
Unemployment rate	7.7	8.1	0.5	0.4	-0.2	-1.0
Employment rate	57.3	56.4	0.3	-0.9	-0.4	0.0
Part-time rate	19.7	18.8	0.7	-0.9	-2.1	0.9
Both sexes, 15 to 24 years									
Population	108.9	108.9	...	0.0	-0.2	-1.5	0.0	-0.2	-1.4
Labour force	68.2	66.6	1.5	-1.6	-1.3	-5.5	-2.3	-1.9	-7.6
Employment	57.2	57.2	1.5	0.0	0.1	-4.6	0.0	0.2	-7.4
Unemployment	10.9	9.4	1.3	-1.5	-1.3	-0.9	-13.8	-12.1	-8.7
Participation rate	62.6	61.2	1.4	-1.4	-1.0	-4.1
Unemployment rate	16.0	14.1	1.8	-1.9	-1.7	-0.2
Employment rate	52.5	52.5	1.4	0.0	0.2	-3.5
Part-time rate	48.8	45.3	2.8	-3.5	-3.8	0.9
Men, 25 years and over									
Population	326.5	326.7	...	0.2	0.4	2.5	0.1	0.1	0.8
Labour force	214.6	213.4	1.5	-1.2	-1.1	0.2	-0.6	-0.5	0.1
Employment	196.3	193.8	1.6	-2.5	-0.4	1.8	-1.3	-0.2	0.9
Unemployment	18.3	19.5	1.5	1.2	-0.7	-1.7	6.6	-3.5	-8.0
Participation rate	65.7	65.3	0.4	-0.4	-0.4	-0.5
Unemployment rate	8.5	9.1	0.7	0.6	-0.3	-0.8
Employment rate	60.1	59.3	0.5	-0.8	-0.2	0.1
Part-time rate	8.6	9.2	0.8	0.6	0.0	2.6
Women, 25 years and over									
Population	354.8	354.9	...	0.1	0.2	2.1	0.0	0.1	0.6
Labour force	207.8	205.1	1.4	-2.7	-1.5	1.6	-1.3	-0.7	0.8
Employment	199.1	194.9	1.5	-4.2	-2.3	4.5	-2.1	-1.2	2.4
Unemployment	8.6	10.2	1.2	1.6	0.8	-2.9	18.6	8.5	-22.1
Participation rate	58.6	57.8	0.4	-0.8	-0.4	0.1
Unemployment rate	4.1	5.0	0.6	0.9	0.5	-1.4
Employment rate	56.1	54.9	0.4	-1.2	-0.7	0.9
Part-time rate	22.3	20.5	1.1	-1.8	-3.5	-0.1
Industry									
Industry	452.7	445.9	2.7	-6.8	-2.6	1.7	-1.5	-0.6	0.4
Goods-producing sector									
Goods-producing sector	83.0	79.9	1.6	-3.1	-0.8	-2.8	-3.7	-1.0	-3.4
Agriculture	4.8	4.5	0.6	-0.3	-0.3	-0.5	-6.3	-6.3	-10.0
Forestry, fishing, mining, quarrying, oil and gas extraction ²	12.5	11.4	0.8	-1.1	-0.2	-0.7	-8.8	-1.7	-5.8
Utilities	3.7	4.1	0.2	0.4	0.7	0.9	10.8	20.6	28.1
Construction	34.6	32.8	1.1	-1.8	-0.5	0.4	-5.2	-1.5	1.2
Manufacturing	27.3	27.1	0.8	-0.2	-0.7	-2.8	-0.7	-2.5	-9.4
Services-producing sector									
Services-producing sector	369.7	366.0	2.5	-3.7	-1.8	4.4	-1.0	-0.5	1.2
Wholesale and retail trade	75.1	75.5	1.3	0.4	1.5	6.3	0.5	2.0	9.1
Transportation and warehousing	20.4	18.7	0.7	-1.7	-1.4	-1.9	-8.3	-7.0	-9.2
Finance, insurance, real estate, rental and leasing	22.5	22.5	0.7	0.0	-1.1	-1.7	0.0	-4.7	-7.0
Professional, scientific and technical services	29.8	29.3	0.9	-0.5	1.0	3.2	-1.7	3.5	12.3
Business, building and other support services	16.9	17.5	0.8	0.6	0.3	0.4	3.6	1.7	2.3
Educational services	34.2	33.6	1.0	-0.6	-2.6	-4.4	-1.8	-7.2	-11.6
Health care and social assistance	76.8	74.8	1.1	-2.0	-1.1	0.4	-2.6	-1.4	0.5
Information, culture and recreation	16.2	14.5	0.9	-1.7	-1.0	-1.6	-10.5	-6.5	-9.9
Accommodation and food services	29.1	31.9	1.1	2.8	3.8	1.3	9.6	13.5	4.2
Other services (except public administration)	19.9	18.4	0.8	-1.5	-2.4	-0.5	-7.5	-11.5	-2.6
Public administration	28.8	29.4	0.8	0.6	1.4	3.1	2.1	5.0	11.8

1. Average standard error of change in two consecutive months (see "Sampling Errors" in Data Quality for further explanations).

2. Also referred to as Natural resources.

Note(s): Related CANSIM Tables 282-0087, 282-0088. The sum of individual categories may not always add to the total due to rounding.

Table 4-4
Selected labour force characteristics (seasonally adjusted) — New Brunswick

	January 2017	February 2017	S.E. ¹	Change from			Percent change from		
				last month	last December	twelve months ago	last month	last December	twelve months ago
in thousands (except rates)									
Both sexes, 15 years and over									
Population	624.0	624.0	...	0.0	0.1	1.4	0.0	0.0	0.2
Labour force	386.6	386.3	2.2	-0.3	-5.2	2.6	-0.1	-1.3	0.7
Employment	351.9	351.9	2.2	0.0	-3.0	5.9	0.0	-0.8	1.7
Employment full-time	300.2	301.3	2.8	1.1	2.3	8.8	0.4	0.8	3.0
Unemployment	34.6	34.5	2.1	-0.1	-2.1	-3.2	-0.3	-5.7	-8.5
Participation rate	62.0	61.9	0.4	-0.1	-0.9	0.3
Unemployment rate	8.9	8.9	0.5	0.0	-0.4	-0.9
Employment rate	56.4	56.4	0.4	0.0	-0.5	0.8
Part-time rate	14.7	14.4	0.7	-0.3	-1.4	-1.1
Both sexes, 15 to 24 years									
Population	82.3	82.3	...	0.0	-0.1	-1.3	0.0	-0.1	-1.6
Labour force	53.8	52.3	1.2	-1.5	-2.6	2.7	-2.8	-4.7	5.4
Employment	45.3	44.4	1.2	-0.9	-2.6	3.1	-2.0	-5.5	7.5
Unemployment	8.5	7.9	1.1	-0.6	0.0	-0.4	-7.1	0.0	-4.8
Participation rate	65.4	63.5	1.5	-1.9	-3.1	4.2
Unemployment rate	15.8	15.1	1.9	-0.7	0.7	-1.6
Employment rate	55.0	53.9	1.4	-1.1	-3.1	4.5
Part-time rate	38.4	38.3	2.7	-0.1	-1.1	-6.0
Men, 25 years and over									
Population	262.2	262.2	...	0.0	0.1	1.2	0.0	0.0	0.5
Labour force	172.2	174.1	1.3	1.9	-0.8	1.4	1.1	-0.5	0.8
Employment	155.2	156.5	1.4	1.3	1.3	3.9	0.8	0.8	2.6
Unemployment	17.1	17.6	1.4	0.5	-2.0	-2.5	2.9	-10.2	-12.4
Participation rate	65.7	66.4	0.5	0.7	-0.3	0.2
Unemployment rate	9.9	10.1	0.8	0.2	-1.1	-1.5
Employment rate	59.2	59.7	0.5	0.5	0.5	1.2
Part-time rate	5.6	6.1	0.7	0.5	-0.8	-0.4
Women, 25 years and over									
Population	279.5	279.6	...	0.1	0.2	1.6	0.0	0.1	0.6
Labour force	160.6	160.0	1.2	-0.6	-1.8	-1.4	-0.4	-1.1	-0.9
Employment	151.5	150.9	1.2	-0.6	-1.8	-1.2	-0.4	-1.2	-0.8
Unemployment	9.1	9.0	1.0	-0.1	-0.1	-0.3	-1.1	-1.1	-3.2
Participation rate	57.5	57.2	0.4	-0.3	-0.7	-0.9
Unemployment rate	5.7	5.6	0.6	-0.1	0.0	-0.2
Employment rate	54.2	54.0	0.4	-0.2	-0.7	-0.7
Part-time rate	16.9	16.0	1.1	-0.9	-1.6	-0.7
Industry									
Industry	351.9	351.9	2.2	0.0	-3.0	5.9	0.0	-0.8	1.7
Goods-producing sector									
Goods-producing sector	72.7	71.9	1.5	-0.8	-0.7	-1.2	-1.1	-1.0	-1.6
Agriculture	5.3	5.6	0.5	0.3	-0.6	1.1	5.7	-9.7	24.4
Forestry, fishing, mining, quarrying, oil and gas extraction ²	9.6	9.2	0.7	-0.4	0.5	-1.3	-4.2	5.7	-12.4
Utilities	4.1	4.1	0.2	0.0	0.0	0.6	0.0	0.0	17.1
Construction	24.1	23.7	1.0	-0.4	1.0	-2.5	-1.7	4.4	-9.5
Manufacturing	29.5	29.4	0.9	-0.1	-1.4	1.0	-0.3	-4.5	3.5
Services-producing sector									
Services-producing sector	279.3	279.9	2.0	0.6	-2.5	7.0	0.2	-0.9	2.6
Wholesale and retail trade	56.9	57.1	1.0	0.2	-1.3	2.4	0.4	-2.2	4.4
Transportation and warehousing	17.5	16.7	0.6	-0.8	-0.9	-2.3	-4.6	-5.1	-12.1
Finance, insurance, real estate, rental and leasing	17.5	18.1	0.6	0.6	0.4	2.3	3.4	2.3	14.6
Professional, scientific and technical services	15.1	16.0	0.6	0.9	1.3	0.7	6.0	8.8	4.6
Business, building and other support services	15.0	14.9	0.7	-0.1	0.0	-2.0	-0.7	0.0	-11.8
Educational services	25.6	25.9	0.8	0.3	-0.2	1.0	1.2	-0.8	4.0
Health care and social assistance	54.8	56.3	0.9	1.5	0.9	4.0	2.7	1.6	7.6
Information, culture and recreation	12.8	11.8	0.6	-1.0	-1.2	0.2	-7.8	-9.2	1.7
Accommodation and food services	23.0	23.4	0.9	0.4	0.2	0.5	1.7	0.9	2.2
Other services (except public administration)	17.1	15.4	0.6	-1.7	-2.2	-0.7	-9.9	-12.5	-4.3
Public administration	24.0	24.2	0.6	0.2	0.3	0.7	0.8	1.3	3.0

1. Average standard error of change in two consecutive months (see "Sampling Errors" in Data Quality for further explanations).

2. Also referred to as Natural resources.

Note(s): Related CANSIM Tables 282-0087, 282-0088. The sum of individual categories may not always add to the total due to rounding.

Table 4-5
Selected labour force characteristics (seasonally adjusted) — Quebec

	January 2017	February 2017	S.E. ¹	Change from			Percent change from		
				last month	last December	twelve months ago	last month	last December	twelve months ago
in thousands (except rates)									
Both sexes, 15 years and over									
Population	6,909.7	6,912.1	...	2.4	6.2	42.8	0.0	0.1	0.6
Labour force	4,482.1	4,478.2	14.8	-3.9	-15.1	36.9	-0.1	-0.3	0.8
Employment	4,202.6	4,191.5	15.5	-11.1	-7.7	83.0	-0.3	-0.2	2.0
Employment full-time	3,390.5	3,380.0	21.6	-10.5	-16.1	54.8	-0.3	-0.5	1.6
Unemployment	279.5	286.7	13.3	7.2	-7.4	-46.0	2.6	-2.5	-13.8
Participation rate	64.9	64.8	0.2	-0.1	-0.3	0.1
Unemployment rate	6.2	6.4	0.3	0.2	-0.1	-1.1
Employment rate	60.8	60.6	0.2	-0.2	-0.2	0.8
Part-time rate	19.3	19.4	0.5	0.0	0.2	0.3
Both sexes, 15 to 24 years									
Population	923.5	921.8	...	-1.7	-3.9	-22.6	-0.2	-0.4	-2.4
Labour force	619.5	621.1	8.5	1.6	-13.4	-22.7	0.3	-2.1	-3.5
Employment	553.7	553.2	8.0	-0.5	-10.4	-8.0	-0.1	-1.8	-1.4
Unemployment	65.8	67.9	7.4	2.1	-2.9	-14.7	3.2	-4.1	-17.8
Participation rate	67.1	67.4	0.9	0.3	-1.1	-0.8
Unemployment rate	10.6	10.9	1.1	0.3	-0.3	-1.9
Employment rate	60.0	60.0	0.9	0.0	-0.9	0.6
Part-time rate	54.8	54.4	1.7	-0.4	-0.4	2.8
Men, 25 years and over									
Population	2,952.5	2,954.7	...	2.2	5.1	32.4	0.1	0.2	1.1
Labour force	2,041.6	2,042.4	8.2	0.8	0.5	13.2	0.0	0.0	0.7
Employment	1,920.2	1,919.5	9.0	-0.7	13.9	49.4	0.0	0.7	2.6
Unemployment	121.4	122.9	8.3	1.5	-13.4	-36.3	1.2	-9.8	-22.8
Participation rate	69.1	69.1	0.3	0.0	-0.1	-0.3
Unemployment rate	5.9	6.0	0.4	0.1	-0.7	-1.8
Employment rate	65.0	65.0	0.3	0.0	0.4	1.0
Part-time rate	8.7	9.4	0.5	0.6	0.6	1.1
Women, 25 years and over									
Population	3,033.6	3,035.7	...	2.1	5.0	33.1	0.1	0.2	1.1
Labour force	1,821.0	1,814.7	8.3	-6.3	-2.2	46.4	-0.3	-0.1	2.6
Employment	1,728.7	1,718.7	8.8	-10.0	-11.3	41.4	-0.6	-0.7	2.5
Unemployment	92.3	96.0	7.1	3.7	9.1	5.0	4.0	10.5	5.5
Participation rate	60.0	59.8	0.3	-0.2	-0.1	0.9
Unemployment rate	5.1	5.3	0.4	0.2	0.5	0.2
Employment rate	57.0	56.6	0.3	-0.4	-0.5	0.7
Part-time rate	19.7	19.2	0.7	-0.5	0.4	-1.0
Industry									
Goods-producing sector	4,202.6	4,191.5	15.5	-11.1	-7.7	83.0	-0.3	-0.2	2.0
Agriculture	839.8	840.6	8.6	0.8	-1.3	-15.6	0.1	-0.2	-1.8
Forestry, fishing, mining, quarrying, oil and gas extraction ²	56.8	55.6	2.7	-1.2	3.2	-1.0	-2.1	6.1	-1.8
Utilities	35.2	35.4	1.8	0.2	0.5	4.5	0.6	1.4	14.6
Construction	25.6	25.9	1.2	0.3	-2.0	-3.5	1.2	-7.2	-11.9
Manufacturing	237.5	239.9	5.6	2.4	5.3	-0.6	1.0	2.3	-0.2
Services-producing sector	484.8	483.8	6.2	-1.0	-8.3	-15.1	-0.2	-1.7	-3.0
Wholesale and retail trade	3,362.9	3,350.8	14.7	-12.1	-6.5	98.5	-0.4	-0.2	3.0
Transportation and warehousing	671.7	683.3	7.8	11.6	10.4	36.3	1.7	1.5	5.6
Finance, insurance, real estate, rental and leasing	197.0	198.9	4.2	1.9	2.5	5.4	1.0	1.3	2.8
Professional, scientific and technical services	230.8	226.5	4.1	-4.3	2.9	14.0	-1.9	1.3	6.6
Business, building and other support services	313.0	312.7	5.7	-0.3	1.0	-1.0	-0.1	0.3	-0.3
Educational services	183.7	187.7	5.6	4.0	15.9	5.5	2.2	9.3	3.0
Health care and social assistance	297.4	290.6	5.4	-6.8	-9.8	23.7	-2.3	-3.3	8.9
Information, culture and recreation	574.0	570.1	5.9	-3.9	-2.9	-12.6	-0.7	-0.5	-2.2
Accommodation and food services	185.1	177.3	5.4	-7.8	-19.1	0.3	-4.2	-9.7	0.2
Other services (except public administration)	276.4	276.9	5.8	0.5	0.6	-1.4	0.2	0.2	-0.5
Public administration	179.6	172.1	4.2	-7.5	-8.6	11.9	-4.2	-4.8	7.4
Public administration	254.1	254.7	3.5	0.6	0.6	16.4	0.2	0.2	6.9

1. Average standard error of change in two consecutive months (see "Sampling Errors" in Data Quality for further explanations).

2. Also referred to as Natural resources.

Note(s): Related CANSIM Tables 282-0087, 282-0088. The sum of individual categories may not always add to the total due to rounding.

Table 4-6
Selected labour force characteristics (seasonally adjusted) — Ontario

	January 2017	February 2017	S.E. ¹	Change from			Percent change from		
				last month	last December	twelve months ago	last month	last December	twelve months ago
in thousands (except rates)									
Both sexes, 15 years and over									
Population	11,604.3	11,615.2	...	10.9	23.8	149.2	0.1	0.2	1.3
Labour force	7,559.9	7,549.0	20.7	-10.9	23.4	73.3	-0.1	0.3	1.0
Employment	7,075.2	7,079.8	19.7	4.6	33.4	107.5	0.1	0.5	1.5
Employment full-time	5,695.4	5,748.6	26.6	53.2	58.5	100.7	0.9	1.0	1.8
Unemployment	484.8	469.2	16.4	-15.6	-10.0	-34.1	-3.2	-2.1	-6.8
Participation rate	65.1	65.0	0.2	-0.1	0.1	-0.2
Unemployment rate	6.4	6.2	0.2	-0.2	-0.2	-0.5
Employment rate	61.0	61.0	0.2	0.0	0.2	0.2
Part-time rate	19.5	18.8	0.3	-0.7	-0.4	-0.2
Both sexes, 15 to 24 years									
Population	1,782.0	1,781.8	...	-0.2	-0.9	-6.8	0.0	-0.1	-0.4
Labour force	1,095.3	1,082.9	12.2	-12.4	1.7	19.6	-1.1	0.2	1.8
Employment	924.5	932.0	10.9	7.5	4.1	20.7	0.8	0.4	2.3
Unemployment	170.8	150.9	9.8	-19.9	-2.5	-1.1	-11.7	-1.6	-0.7
Participation rate	61.5	60.8	0.7	-0.7	0.2	1.4
Unemployment rate	15.6	13.9	0.8	-1.7	-0.3	-0.4
Employment rate	51.9	52.3	0.6	0.4	0.2	1.3
Part-time rate	50.0	50.5	1.3	0.5	1.8	1.5
Men, 25 years and over									
Population	4,740.7	4,746.3	...	5.6	12.1	77.9	0.1	0.3	1.7
Labour force	3,387.6	3,378.5	10.2	-9.1	12.8	9.6	-0.3	0.4	0.3
Employment	3,227.1	3,215.9	10.5	-11.2	14.0	35.7	-0.3	0.4	1.1
Unemployment	160.4	162.6	9.3	2.2	-1.2	-26.1	1.4	-0.7	-13.8
Participation rate	71.5	71.2	0.2	-0.3	0.1	-1.0
Unemployment rate	4.7	4.8	0.3	0.1	-0.1	-0.8
Employment rate	68.1	67.8	0.2	-0.3	0.2	-0.3
Part-time rate	8.8	8.5	0.4	-0.3	-0.5	0.4
Women, 25 years and over									
Population	5,081.6	5,087.1	...	5.5	12.6	78.1	0.1	0.2	1.6
Labour force	3,077.0	3,087.5	12.0	10.5	8.8	44.0	0.3	0.3	1.4
Employment	2,923.6	2,931.9	11.6	8.3	15.3	51.1	0.3	0.5	1.8
Unemployment	153.5	155.6	9.2	2.1	-6.5	-7.0	1.4	-4.0	-4.3
Participation rate	60.6	60.7	0.2	0.1	0.0	-0.1
Unemployment rate	5.0	5.0	0.3	0.0	-0.3	-0.3
Employment rate	57.5	57.6	0.2	0.1	0.1	0.1
Part-time rate	21.7	20.1	0.6	-1.6	-1.1	-1.5
Industry	7,075.2	7,079.8	19.7	4.6	33.4	107.5	0.1	0.5	1.5
Goods-producing sector	1,441.4	1,411.5	10.2	-29.9	-11.8	-26.2	-2.1	-0.8	-1.8
Agriculture	73.7	71.5	2.9	-2.2	-0.4	-10.9	-3.0	-0.6	-13.2
Forestry, fishing, mining, quarrying, oil and gas extraction ²	32.9	36.0	1.6	3.1	1.8	-4.3	9.4	5.3	-10.7
Utilities	51.7	50.7	1.7	-1.0	-0.6	2.6	-1.9	-1.2	5.4
Construction	523.4	500.4	6.7	-23.0	-19.9	-2.2	-4.4	-3.8	-0.4
Manufacturing	759.6	752.8	7.3	-6.8	7.2	-11.6	-0.9	1.0	-1.5
Services-producing sector	5,633.8	5,668.3	18.9	34.5	45.2	133.7	0.6	0.8	2.4
Wholesale and retail trade	1,019.4	1,037.2	9.8	17.8	12.3	3.4	1.7	1.2	0.3
Transportation and warehousing	327.2	327.6	5.4	0.4	3.4	0.9	0.1	1.0	0.3
Finance, insurance, real estate, rental and leasing	570.5	573.2	6.2	2.7	10.9	19.7	0.5	1.9	3.6
Professional, scientific and technical services	599.6	600.4	7.5	0.8	-6.1	7.5	0.1	-1.0	1.3
Business, building and other support services	326.9	321.9	7.4	-5.0	-6.3	-18.2	-1.5	-1.9	-5.4
Educational services	501.7	501.0	7.2	-0.7	1.2	-5.5	-0.1	0.2	-1.1
Health care and social assistance	858.2	871.1	7.0	12.9	20.4	45.6	1.5	2.4	5.5
Information, culture and recreation	317.3	317.4	6.8	0.1	-6.3	16.0	0.0	-1.9	5.3
Accommodation and food services	464.5	461.6	7.6	-2.9	1.8	14.0	-0.6	0.4	3.1
Other services (except public administration)	280.0	283.4	5.3	3.4	1.7	19.7	1.2	0.6	7.5
Public administration	368.4	373.5	5.2	5.1	12.2	30.4	1.4	3.4	8.9

1. Average standard error of change in two consecutive months (see "Sampling Errors" in Data Quality for further explanations).

2. Also referred to as Natural resources.

Note(s): Related CANSIM Tables 282-0087, 282-0088. The sum of individual categories may not always add to the total due to rounding.

Table 4-7
Selected labour force characteristics (seasonally adjusted) — Manitoba

	January 2017	February 2017	S.E. ¹	Change from			Percent change from		
				last month	last December	twelve months ago	last month	last December	twelve months ago
in thousands (except rates)									
Both sexes, 15 years and over									
Population	1,006.1	1,007.4	...	1.3	3.0	13.4	0.1	0.3	1.3
Labour force	675.6	677.2	2.6	1.6	1.9	5.9	0.2	0.3	0.9
Employment	634.3	637.7	2.6	3.4	4.7	6.6	0.5	0.7	1.0
Employment full-time	513.1	517.0	3.6	3.9	7.6	7.8	0.8	1.5	1.5
Unemployment	41.3	39.5	2.0	-1.8	-2.8	-0.7	-4.4	-6.6	-1.7
Participation rate	67.2	67.2	0.3	0.0	0.0	-0.3
Unemployment rate	6.1	5.8	0.3	-0.3	-0.5	-0.2
Employment rate	63.0	63.3	0.3	0.3	0.3	-0.2
Part-time rate	19.1	18.9	0.5	-0.2	-0.6	-0.4
Both sexes, 15 to 24 years									
Population	163.7	163.9	...	0.2	0.4	1.0	0.1	0.2	0.6
Labour force	108.5	108.8	1.5	0.3	-0.8	2.6	0.3	-0.7	2.4
Employment	94.2	94.6	1.4	0.4	-0.7	1.4	0.4	-0.7	1.5
Unemployment	14.3	14.2	1.3	-0.1	-0.2	1.1	-0.7	-1.4	8.4
Participation rate	66.3	66.4	0.9	0.1	-0.6	1.2
Unemployment rate	13.2	13.1	1.1	-0.1	0.0	0.8
Employment rate	57.5	57.7	0.9	0.2	-0.6	0.5
Part-time rate	42.8	44.6	1.8	1.8	-0.1	-0.5
Men, 25 years and over									
Population	413.0	413.6	...	0.6	1.4	6.2	0.1	0.3	1.5
Labour force	302.6	303.0	1.4	0.4	0.7	1.4	0.1	0.2	0.5
Employment	286.5	289.5	1.4	3.0	2.9	4.0	1.0	1.0	1.4
Unemployment	16.1	13.5	1.2	-2.6	-2.2	-2.6	-16.1	-14.0	-16.1
Participation rate	73.3	73.3	0.3	0.0	0.0	-0.7
Unemployment rate	5.3	4.5	0.4	-0.8	-0.7	-0.8
Employment rate	69.4	70.0	0.3	0.6	0.5	-0.1
Part-time rate	8.4	7.9	0.6	-0.6	-0.9	0.2
Women, 25 years and over									
Population	429.4	429.9	...	0.5	1.2	6.2	0.1	0.3	1.5
Labour force	264.4	265.3	1.5	0.9	1.9	1.9	0.3	0.7	0.7
Employment	253.5	253.6	1.5	0.1	2.4	1.3	0.0	1.0	0.5
Unemployment	10.9	11.7	1.0	0.8	-0.6	0.7	7.3	-4.9	6.4
Participation rate	61.6	61.7	0.3	0.1	0.3	-0.5
Unemployment rate	4.1	4.4	0.4	0.3	-0.3	0.2
Employment rate	59.0	59.0	0.3	0.0	0.4	-0.5
Part-time rate	22.4	21.9	0.8	-0.4	-0.3	-1.1
Industry	634.3	637.7	2.6	3.4	4.7	6.6	0.5	0.7	1.0
Goods-producing sector	150.2	153.4	1.7	3.2	4.2	3.4	2.1	2.8	2.3
Agriculture	24.4	23.1	0.9	-1.3	-0.2	-0.2	-5.3	-0.9	-0.9
Forestry, fishing, mining, quarrying, oil and gas extraction ²	7.3	7.5	0.4	0.2	1.0	1.3	2.7	15.4	21.0
Utilities	9.8	9.6	0.3	-0.2	-0.3	-0.6	-2.0	-3.0	-5.9
Construction	45.1	48.4	1.1	3.3	2.9	1.9	7.3	6.4	4.1
Manufacturing	63.7	64.8	0.9	1.1	0.8	1.0	1.7	1.3	1.6
Services-producing sector	484.1	484.4	2.4	0.3	0.6	3.4	0.1	0.1	0.7
Wholesale and retail trade	88.6	87.8	1.2	-0.8	0.7	-1.4	-0.9	0.8	-1.6
Transportation and warehousing	36.7	37.7	0.8	1.0	2.1	2.4	2.7	5.9	6.8
Finance, insurance, real estate, rental and leasing	36.3	37.9	0.7	1.6	1.9	5.2	4.4	5.3	15.9
Professional, scientific and technical services	28.4	28.3	0.7	-0.1	-0.2	1.8	-0.4	-0.7	6.8
Business, building and other support services	18.1	17.4	0.7	-0.7	-1.7	-1.3	-3.9	-8.9	-7.0
Educational services	49.4	49.9	1.0	0.5	0.2	-0.5	1.0	0.4	-1.0
Health care and social assistance	103.0	101.1	1.2	-1.9	-0.8	-0.7	-1.8	-0.8	-0.7
Information, culture and recreation	23.5	23.8	0.8	0.3	-0.9	1.0	1.3	-3.6	4.4
Accommodation and food services	39.1	40.2	1.0	1.1	0.3	-0.9	2.8	0.8	-2.2
Other services (except public administration)	27.6	27.5	0.8	-0.1	-0.3	-1.9	-0.4	-1.1	-6.5
Public administration	33.5	33.0	0.7	-0.5	-0.5	0.0	-1.5	-1.5	0.0

1. Average standard error of change in two consecutive months (see "Sampling Errors" in Data Quality for further explanations).

2. Also referred to as Natural resources.

Note(s): Related CANSIM Tables 282-0087, 282-0088. The sum of individual categories may not always add to the total due to rounding.

Table 4-8
Selected labour force characteristics (seasonally adjusted) — Saskatchewan

	January 2017	February 2017	S.E. ¹	Change from			Percent change from		
				last month	last December	twelve months ago	last month	last December	twelve months ago
Both sexes, 15 years and over									
Population	872.7	873.4	...	0.7	0.9	7.6	0.1	0.1	0.9
Labour force	606.3	612.5	2.6	6.2	4.4	9.4	1.0	0.7	1.6
Employment	567.5	575.5	2.6	8.0	7.3	8.8	1.4	1.3	1.6
Employment full-time	463.6	469.9	3.4	6.3	3.3	3.2	1.4	0.7	0.7
Unemployment	38.8	36.9	2.2	-1.9	-3.0	0.5	-4.9	-7.5	1.4
Participation rate	69.5	70.1	0.3	0.6	0.4	0.4
Unemployment rate	6.4	6.0	0.3	-0.4	-0.6	0.0
Employment rate	65.0	65.9	0.3	0.9	0.8	0.4
Part-time rate	18.3	18.3	0.5	0.0	0.5	0.7
Both sexes, 15 to 24 years									
Population	134.0	133.9	...	-0.1	-0.4	-1.4	-0.1	-0.3	-1.0
Labour force	88.7	87.7	1.4	-1.0	1.1	-3.0	-1.1	1.3	-3.3
Employment	78.9	78.6	1.4	-0.3	0.7	-1.3	-0.4	0.9	-1.6
Unemployment	9.8	9.0	1.2	-0.8	0.3	-1.9	-8.2	3.4	-17.4
Participation rate	66.2	65.5	1.0	-0.7	1.0	-1.5
Unemployment rate	11.0	10.3	1.3	-0.7	0.3	-1.7
Employment rate	58.9	58.7	1.1	-0.2	0.7	-0.4
Part-time rate	41.3	44.4	1.9	3.1	5.2	5.9
Men, 25 years and over									
Population	369.8	370.2	...	0.4	0.8	4.5	0.1	0.2	1.2
Labour force	283.9	285.6	1.4	1.7	-1.7	5.4	0.6	-0.6	1.9
Employment	266.5	268.7	1.5	2.2	0.5	3.2	0.8	0.2	1.2
Unemployment	17.3	16.9	1.3	-0.4	-2.2	2.1	-2.3	-11.5	14.2
Participation rate	76.8	77.1	0.4	0.3	-0.7	0.5
Unemployment rate	6.1	5.9	0.4	-0.2	-0.7	0.6
Employment rate	72.1	72.6	0.4	0.5	0.0	0.0
Part-time rate	7.0	7.2	0.5	0.2	0.3	0.1
Women, 25 years and over									
Population	368.8	369.3	...	0.5	0.5	4.5	0.1	0.1	1.2
Labour force	233.7	239.2	1.4	5.5	5.0	7.1	2.4	2.1	3.1
Employment	222.1	228.1	1.5	6.0	6.0	6.7	2.7	2.7	3.0
Unemployment	11.6	11.0	1.1	-0.6	-1.1	0.3	-5.2	-9.1	2.8
Participation rate	63.4	64.8	0.4	1.4	1.3	1.2
Unemployment rate	5.0	4.6	0.4	-0.4	-0.6	0.0
Employment rate	60.2	61.8	0.4	1.6	1.6	1.1
Part-time rate	23.7	22.5	0.9	-1.2	-1.2	-0.3
Industry									
Industry	567.5	575.5	2.6	8.0	7.3	8.8	1.4	1.3	1.6
Goods-producing sector									
Goods-producing sector	147.8	148.9	1.8	1.1	-0.6	-4.0	0.7	-0.4	-2.6
Agriculture	39.5	39.3	1.2	-0.2	-0.5	-4.0	-0.5	-1.3	-9.2
Forestry, fishing, mining, quarrying, oil and gas extraction ²	23.9	23.5	0.7	-0.4	-1.4	-2.1	-1.7	-5.6	-8.2
Utilities	6.7	7.0	0.3	0.3	0.2	0.1	4.5	2.9	1.4
Construction	50.3	50.6	1.2	0.3	-0.2	-1.0	0.6	-0.4	-1.9
Manufacturing	27.4	28.4	0.6	1.0	1.3	2.9	3.6	4.8	11.4
Services-producing sector									
Services-producing sector	419.8	426.6	2.4	6.8	7.8	12.8	1.6	1.9	3.1
Wholesale and retail trade	91.9	93.1	1.3	1.2	2.3	8.0	1.3	2.5	9.4
Transportation and warehousing	29.0	28.3	0.8	-0.7	-0.1	1.3	-2.4	-0.4	4.8
Finance, insurance, real estate, rental and leasing	26.7	26.9	0.6	0.2	0.1	-3.2	0.7	0.4	-10.6
Professional, scientific and technical services	31.2	31.7	0.8	0.5	0.7	4.7	1.6	2.3	17.4
Business, building and other support services	13.2	13.0	0.6	-0.2	-0.1	0.4	-1.5	-0.8	3.2
Educational services	41.2	43.7	1.0	2.5	2.6	4.1	6.1	6.3	10.4
Health care and social assistance	76.0	78.4	1.1	2.4	1.4	-1.3	3.2	1.8	-1.6
Information, culture and recreation	21.2	21.2	0.8	0.0	0.6	0.4	0.0	2.9	1.9
Accommodation and food services	35.4	36.7	1.0	1.3	0.1	-0.3	3.7	0.3	-0.8
Other services (except public administration)	24.5	23.5	0.8	-1.0	0.0	-3.5	-4.1	0.0	-13.0
Public administration	29.5	30.0	0.7	0.5	0.1	2.0	1.7	0.3	7.1

1. Average standard error of change in two consecutive months (see "Sampling Errors" in Data Quality for further explanations).

2. Also referred to as Natural resources.

Note(s): Related CANSIM Tables 282-0087, 282-0088. The sum of individual categories may not always add to the total due to rounding.

Table 4-9
Selected labour force characteristics (seasonally adjusted) — Alberta

	January 2017	February 2017	S.E. ¹	Change from			Percent change from		
				last month	last December	twelve months ago	last month	last December	twelve months ago
in thousands (except rates)									
Both sexes, 15 years and over									
Population	3,411.4	3,414.2	...	2.8	4.6	28.6	0.1	0.1	0.8
Labour force	2,487.8	2,473.7	9.4	-14.1	-5.5	5.6	-0.6	-0.2	0.2
Employment	2,267.6	2,268.9	10.1	1.3	1.5	-5.3	0.1	0.1	-0.2
Employment full-time	1,821.8	1,841.1	13.7	19.3	-5.0	-23.1	1.1	-0.3	-1.2
Unemployment	220.1	204.8	8.8	-15.3	-7.1	10.9	-7.0	-3.4	5.6
Participation rate	72.9	72.5	0.3	-0.4	-0.2	-0.4
Unemployment rate	8.8	8.3	0.3	-0.5	-0.2	0.4
Employment rate	66.5	66.5	0.3	0.0	0.0	-0.7
Part-time rate	19.7	18.9	0.5	-0.8	0.3	0.8
Both sexes, 15 to 24 years									
Population	511.8	511.2	...	-0.6	-1.6	-8.0	-0.1	-0.3	-1.5
Labour force	353.4	342.9	5.4	-10.5	-4.5	-6.9	-3.0	-1.3	-2.0
Employment	305.7	297.0	5.3	-8.7	-6.7	-10.3	-2.8	-2.2	-3.4
Unemployment	47.7	45.9	4.9	-1.8	2.3	3.4	-3.8	5.3	8.0
Participation rate	69.1	67.1	1.1	-2.0	-0.6	-0.3
Unemployment rate	13.5	13.4	1.3	-0.1	0.8	1.3
Employment rate	59.7	58.1	1.0	-1.6	-1.1	-1.1
Part-time rate	45.8	43.5	2.0	-2.3	1.8	4.4
Men, 25 years and over									
Population	1,464.1	1,465.5	...	1.4	2.5	16.1	0.1	0.2	1.1
Labour force	1,180.2	1,175.2	5.1	-5.0	-4.7	13.2	-0.4	-0.4	1.1
Employment	1,075.0	1,080.6	6.0	5.6	2.5	4.1	0.5	0.2	0.4
Unemployment	105.2	94.6	5.5	-10.6	-7.2	9.1	-10.1	-7.1	10.6
Participation rate	80.6	80.2	0.4	-0.4	-0.4	0.0
Unemployment rate	8.9	8.0	0.5	-0.9	-0.6	0.6
Employment rate	73.4	73.7	0.4	0.3	0.0	-0.6
Part-time rate	8.7	8.7	0.6	0.0	0.8	0.9
Women, 25 years and over									
Population	1,435.6	1,437.5	...	1.9	3.7	20.5	0.1	0.3	1.4
Labour force	954.1	955.6	5.7	1.5	3.6	-0.7	0.2	0.4	-0.1
Employment	886.9	891.4	5.8	4.5	5.9	1.0	0.5	0.7	0.1
Unemployment	67.2	64.2	4.7	-3.0	-2.3	-1.8	-4.5	-3.5	-2.7
Participation rate	66.5	66.5	0.4	0.0	0.1	-1.0
Unemployment rate	7.0	6.7	0.5	-0.3	-0.3	-0.2
Employment rate	61.8	62.0	0.4	0.2	0.2	-0.8
Part-time rate	24.0	22.9	0.9	-1.0	-0.7	-0.1
Industry	2,267.6	2,268.9	10.1	1.3	1.5	-5.3	0.1	0.1	-0.2
Goods-producing sector									
Agriculture	559.0	562.4	6.5	3.4	-7.9	-39.1	0.6	-1.4	-6.5
Forestry, fishing, mining, quarrying, oil and gas extraction ²	50.5	49.9	2.4	-0.6	-1.5	-1.5	-1.2	-2.9	-2.9
Utilities	141.0	142.3	3.4	1.3	1.7	-4.6	0.9	1.2	-3.1
Construction	19.7	20.2	1.0	0.5	-0.9	-0.6	2.5	-4.3	-2.9
Manufacturing	242.1	241.4	4.8	-0.7	-6.1	-16.9	-0.3	-2.5	-6.5
	105.7	108.6	2.8	2.9	-1.0	-15.6	2.7	-0.9	-12.6
Services-producing sector									
Wholesale and retail trade	1,708.7	1,706.5	9.1	-2.2	9.4	33.8	-0.1	0.6	2.0
Transportation and warehousing	331.3	328.7	4.8	-2.6	3.4	2.7	-0.8	1.0	0.8
Finance, insurance, real estate, rental and leasing	138.4	140.7	2.9	2.3	6.7	11.7	1.7	5.0	9.1
Professional, scientific and technical services	100.7	103.4	2.5	2.7	1.6	-4.0	2.7	1.6	-3.7
Business, building and other support services	183.2	182.5	3.7	-0.7	0.5	0.3	-0.4	0.3	0.2
Educational services	80.2	76.7	2.9	-3.5	-1.0	-3.0	-4.4	-1.3	-3.8
Health care and social assistance	155.3	156.9	3.5	1.6	4.5	9.5	1.0	3.0	6.4
Information, culture and recreation	278.2	274.9	3.5	-3.3	-1.8	5.0	-1.2	-0.7	1.9
Accommodation and food services	72.1	76.3	3.2	4.2	3.4	-4.3	5.8	4.7	-5.3
Other services (except public administration)	143.8	144.9	3.9	1.1	-2.1	8.8	0.8	-1.4	6.5
Public administration	123.6	120.7	3.1	-2.9	-4.2	1.4	-2.3	-3.4	1.2
	101.9	100.7	2.3	-1.2	-1.8	5.5	-1.2	-1.8	5.8

1. Average standard error of change in two consecutive months (see "Sampling Errors" in Data Quality for further explanations).

2. Also referred to as Natural resources.

Note(s): Related CANSIM Tables 282-0087, 282-0088. The sum of individual categories may not always add to the total due to rounding.

Table 4-10
Selected labour force characteristics (seasonally adjusted) — British Columbia

	January 2017	February 2017	S.E. ¹	Change from			Percent change from		
				last month	last December	twelve months ago	last month	last December	twelve months ago
in thousands (except rates)									
Both sexes, 15 years and over									
Population	3,955.7	3,959.4	...	3.7	6.6	49.4	0.1	0.2	1.3
Labour force	2,562.3	2,568.9	10.6	6.6	12.5	50.4	0.3	0.5	2.0
Employment	2,419.4	2,438.8	10.4	19.4	30.6	84.9	0.8	1.3	3.6
Employment full-time	1,892.8	1,926.2	14.6	33.4	58.8	89.1	1.8	3.1	4.9
Unemployment	142.9	130.1	9.0	-12.8	-18.1	-34.5	-9.0	-12.2	-21.0
Participation rate	64.8	64.9	0.3	0.1	0.2	0.5
Unemployment rate	5.6	5.1	0.3	-0.5	-0.7	-1.4
Employment rate	61.2	61.6	0.3	0.4	0.7	1.4
Part-time rate	21.8	21.0	0.6	-0.7	-1.4	-0.9
Both sexes, 15 to 24 years									
Population	582.1	582.0	...	-0.1	-0.9	-2.6	0.0	-0.2	-0.4
Labour force	384.4	375.9	6.2	-8.5	3.9	-1.8	-2.2	1.0	-0.5
Employment	346.4	343.1	6.0	-3.3	3.6	11.4	-1.0	1.1	3.4
Unemployment	38.1	32.8	5.1	-5.3	0.3	-13.2	-13.9	0.9	-28.7
Participation rate	66.0	64.6	1.1	-1.4	0.8	0.0
Unemployment rate	9.9	8.7	1.3	-1.2	0.0	-3.5
Employment rate	59.5	59.0	1.0	-0.5	0.8	2.3
Part-time rate	49.0	47.6	2.1	-1.4	-4.7	-0.1
Men, 25 years and over									
Population	1,645.5	1,647.3	...	1.8	3.2	24.8	0.1	0.2	1.5
Labour force	1,133.7	1,142.7	5.8	9.0	1.6	10.0	0.8	0.1	0.9
Employment	1,079.2	1,090.5	5.8	11.3	13.0	26.7	1.0	1.2	2.5
Unemployment	54.5	52.3	5.4	-2.2	-11.4	-16.6	-4.0	-17.9	-24.1
Participation rate	68.9	69.4	0.4	0.5	0.0	-0.4
Unemployment rate	4.8	4.6	0.5	-0.2	-1.0	-1.5
Employment rate	65.6	66.2	0.4	0.6	0.7	0.6
Part-time rate	10.2	10.5	0.6	0.3	0.4	0.3
Women, 25 years and over									
Population	1,728.1	1,730.2	...	2.1	4.3	27.4	0.1	0.2	1.6
Labour force	1,044.2	1,050.3	5.9	6.1	7.0	42.2	0.6	0.7	4.2
Employment	993.9	1,005.2	6.0	11.3	13.9	46.9	1.1	1.4	4.9
Unemployment	50.3	45.1	4.7	-5.2	-7.0	-4.7	-10.3	-13.4	-9.4
Participation rate	60.4	60.7	0.3	0.3	0.3	1.5
Unemployment rate	4.8	4.3	0.5	-0.5	-0.7	-0.6
Employment rate	57.5	58.1	0.4	0.6	0.7	1.8
Part-time rate	24.9	23.4	0.9	-1.5	-2.3	-2.8
Industry									
Industry	2,419.4	2,438.8	10.4	19.4	30.6	84.9	0.8	1.3	3.6
Goods-producing sector									
Goods-producing sector	477.8	482.5	5.9	4.7	6.9	11.1	1.0	1.5	2.4
Agriculture	27.4	28.6	2.3	1.2	-1.1	8.4	4.4	-3.7	41.6
Forestry, fishing, mining, quarrying, oil and gas extraction ²	49.4	48.2	2.2	-1.2	1.2	-5.7	-2.4	2.6	-10.6
Utilities	13.1	12.8	0.7	-0.3	-0.4	-0.4	-2.3	-3.0	-3.0
Construction	217.6	223.6	4.1	6.0	8.1	17.0	2.8	3.8	8.2
Manufacturing	170.5	169.2	3.7	-1.3	-1.1	-8.4	-0.8	-0.6	-4.7
Services-producing sector									
Services-producing sector	1,941.6	1,956.3	10.3	14.7	23.7	73.9	0.8	1.2	3.9
Wholesale and retail trade	375.3	365.7	5.6	-9.6	-9.3	-19.1	-2.6	-2.5	-5.0
Transportation and warehousing	142.3	144.8	3.2	2.5	1.4	11.5	1.8	1.0	8.6
Finance, insurance, real estate, rental and leasing	147.7	149.3	3.3	1.6	4.8	20.1	1.1	3.3	15.6
Professional, scientific and technical services	194.4	192.1	4.3	-2.3	-1.4	2.2	-1.2	-0.7	1.2
Business, building and other support services	103.8	110.4	3.8	6.6	11.9	11.5	6.4	12.1	11.6
Educational services	163.8	167.0	3.9	3.2	7.0	2.9	2.0	4.4	1.8
Health care and social assistance	287.1	292.5	4.2	5.4	-0.4	1.2	1.9	-0.1	0.4
Information, culture and recreation	127.4	129.3	4.1	1.9	3.7	6.5	1.5	2.9	5.3
Accommodation and food services	184.3	182.9	4.5	-1.4	-4.4	17.5	-0.8	-2.3	10.6
Other services (except public administration)	113.5	115.3	3.2	1.8	5.0	12.2	1.6	4.5	11.8
Public administration	102.1	106.9	2.6	4.8	5.4	7.3	4.7	5.3	7.3

1. Average standard error of change in two consecutive months (see "Sampling Errors" in Data Quality for further explanations).

2. Also referred to as Natural resources.

Note(s): Related CANSIM Tables 282-0087, 282-0088. The sum of individual categories may not always add to the total due to rounding.

Table 5-1
Labour force characteristics by census metropolitan area (seasonally adjusted) — 3 month moving average

	January 2017	February 2017	S.E. ¹	Change from			Percent change from		
				last month	last December	twelve months ago	last month	last December	twelve months ago
in thousands (except rates)									
St. John's, Newfoundland and Labrador									
Population	182.8	183.1	...	0.3	0.6	3.1	0.2	0.3	1.7
Labour force	126.2	125.2	0.9	-1.0	-1.2	2.0	-0.8	-0.9	1.6
Employment	114.1	113.7	1.0	-0.4	-0.3	-0.3	-0.4	-0.3	-0.3
Unemployment	12.1	11.4	0.5	-0.7	-1.0	2.2	-5.8	-8.1	23.9
Participation rate	69.0	68.4	0.5	-0.6	-0.9	0.0
Unemployment rate	9.6	9.1	0.4	-0.5	-0.7	1.6
Employment rate	62.4	62.1	0.5	-0.3	-0.4	-1.2
Halifax, Nova Scotia									
Population	356.2	356.7	...	0.5	0.9	5.3	0.1	0.3	1.5
Labour force	240.4	239.4	1.2	-1.0	-1.1	0.1	-0.4	-0.5	0.0
Employment	226.1	224.9	1.3	-1.2	-0.9	1.5	-0.5	-0.4	0.7
Unemployment	14.3	14.5	0.8	0.2	-0.2	-1.4	1.4	-1.4	-8.8
Participation rate	67.5	67.1	0.4	-0.4	-0.5	-1.0
Unemployment rate	5.9	6.1	0.3	0.2	0.0	-0.5
Employment rate	63.5	63.1	0.4	-0.4	-0.4	-0.5
Moncton, New Brunswick									
Population	126.4	126.6	...	0.2	0.3	2.0	0.2	0.2	1.6
Labour force	82.2	81.5	0.7	-0.7	-1.8	-1.7	-0.9	-2.2	-2.0
Employment	75.6	74.8	0.8	-0.8	-2.0	-2.9	-1.1	-2.6	-3.7
Unemployment	6.6	6.7	0.5	0.1	0.2	1.2	1.5	3.1	21.8
Participation rate	65.0	64.4	0.6	-0.6	-1.6	-2.4
Unemployment rate	8.0	8.2	0.5	0.2	0.4	1.6
Employment rate	59.8	59.1	0.6	-0.7	-1.7	-3.3
Saint John, New Brunswick									
Population	105.4	105.4	...	0.0	0.0	0.0	0.0	0.0	0.0
Labour force	72.2	72.4	0.7	0.2	0.9	4.6	0.3	1.3	6.8
Employment	66.6	66.7	0.7	0.1	1.0	4.5	0.2	1.5	7.2
Unemployment	5.6	5.7	0.4	0.1	-0.1	0.1	1.8	-1.7	1.8
Participation rate	68.5	68.7	0.6	0.2	0.9	4.4
Unemployment rate	7.8	7.9	0.6	0.1	-0.2	-0.4
Employment rate	63.2	63.3	0.6	0.1	1.0	4.3
Saguenay, Quebec									
Population	134.9	134.8	...	-0.1	-0.2	-0.2	-0.1	-0.1	-0.1
Labour force	78.9	79.5	0.8	0.6	1.1	-3.4	0.8	1.4	-4.1
Employment	72.9	74.0	0.8	1.1	1.3	-1.7	1.5	1.8	-2.2
Unemployment	6.0	5.5	0.4	-0.5	-0.2	-1.7	-8.3	-3.5	-23.6
Participation rate	58.5	59.0	0.6	0.5	0.9	-2.4
Unemployment rate	7.6	6.9	0.5	-0.7	-0.4	-1.8
Employment rate	54.0	54.9	0.6	0.9	1.0	-1.2
Québec, Quebec									
Population	677.8	678.1	...	0.3	0.6	5.2	0.0	0.1	0.8
Labour force	466.7	467.8	3.5	1.1	2.3	7.4	0.2	0.5	1.6
Employment	446.6	447.6	3.5	1.0	2.3	10.1	0.2	0.5	2.3
Unemployment	20.1	20.2	1.4	0.1	0.1	-2.7	0.5	0.5	-11.8
Participation rate	68.9	69.0	0.5	0.1	0.3	0.6
Unemployment rate	4.3	4.3	0.3	0.0	0.0	-0.7
Employment rate	65.9	66.0	0.5	0.1	0.3	1.0
Sherbrooke, Quebec									
Population	182.3	182.5	...	0.2	0.3	2.1	0.1	0.2	1.2
Labour force	113.2	112.3	1.0	-0.9	-2.0	-1.9	-0.8	-1.7	-1.7
Employment	107.0	106.1	1.1	-0.9	-2.0	-0.1	-0.8	-1.9	-0.1
Unemployment	6.2	6.2	0.5	0.0	0.0	-1.8	0.0	0.0	-22.5
Participation rate	62.1	61.5	0.6	-0.6	-1.2	-1.8
Unemployment rate	5.5	5.5	0.4	0.0	0.1	-1.5
Employment rate	58.7	58.1	0.6	-0.6	-1.2	-0.8

See notes at the end of the table.

Table 5-1 – continued

Labour force characteristics by census metropolitan area (seasonally adjusted) — 3 month moving average

	January 2017	February 2017	S.E. ¹	Change from			Percent change from		
				last month	last December	twelve months ago	last month	last December	twelve months ago
in thousands (except rates)									
Trois-Rivières, Quebec									
Population	133.5	133.5	...	0.0	0.0	0.6	0.0	0.0	0.5
Labour force	80.2	79.8	0.9	-0.4	-1.3	-1.2	-0.5	-1.6	-1.5
Employment	74.5	74.5	0.9	0.0	-0.7	-1.2	0.0	-0.9	-1.6
Unemployment	5.7	5.3	0.4	-0.4	-0.6	0.0	-7.0	-10.2	0.0
Participation rate	60.1	59.8	0.7	-0.3	-0.9	-1.1
Unemployment rate	7.1	6.6	0.4	-0.5	-0.7	0.1
Employment rate	55.8	55.8	0.6	0.0	-0.5	-1.2
Montréal, Quebec									
Population	3,402.6	3,405.1	...	2.5	4.8	33.6	0.1	0.1	1.0
Labour force	2,274.4	2,281.1	8.4	6.7	16.9	42.6	0.3	0.7	1.9
Employment	2,125.4	2,129.3	8.6	3.9	15.9	84.9	0.2	0.8	4.2
Unemployment	149.0	151.8	5.1	2.8	1.0	-42.3	1.9	0.7	-21.8
Participation rate	66.8	67.0	0.2	0.2	0.4	0.6
Unemployment rate	6.6	6.7	0.2	0.1	0.0	-2.0
Employment rate	62.5	62.5	0.3	0.0	0.3	1.9
Ottawa-Gatineau, Ontario/Quebec									
Population	1,117.4	1,118.4	...	1.0	2.1	14.1	0.1	0.2	1.3
Labour force	768.9	768.5	4.2	-0.4	-0.1	4.6	-0.1	0.0	0.6
Employment	725.1	728.1	4.2	3.0	6.4	14.3	0.4	0.9	2.0
Unemployment	43.7	40.4	2.0	-3.3	-6.5	-9.7	-7.6	-13.9	-19.4
Participation rate	68.8	68.7	0.4	-0.1	-0.2	-0.5
Unemployment rate	5.7	5.3	0.3	-0.4	-0.8	-1.3
Employment rate	64.9	65.1	0.4	0.2	0.4	0.5
Ottawa-Gatineau, Quebec part, Ontario/Quebec									
Population	274.8	274.9	...	0.1	0.2	1.6	0.0	0.1	0.6
Labour force	185.9	186.0	1.3	0.1	-0.9	-3.4	0.1	-0.5	-1.8
Employment	175.6	175.6	1.4	0.0	-0.1	-1.5	0.0	-0.1	-0.8
Unemployment	10.3	10.3	0.6	0.0	-1.0	-2.0	0.0	-8.8	-16.3
Participation rate	67.6	67.7	0.5	0.1	-0.3	-1.6
Unemployment rate	5.5	5.5	0.3	0.0	-0.5	-1.0
Employment rate	63.9	63.9	0.5	0.0	-0.1	-0.9
Ottawa-Gatineau, Ontario part, Ontario/Quebec									
Population	842.5	843.6	...	1.1	2.1	12.6	0.1	0.2	1.5
Labour force	583.0	582.6	3.9	-0.4	0.9	8.1	-0.1	0.2	1.4
Employment	549.5	552.5	4.0	3.0	6.4	15.8	0.5	1.2	2.9
Unemployment	33.4	30.0	1.9	-3.4	-5.6	-7.7	-10.2	-15.7	-20.4
Participation rate	69.2	69.1	0.5	-0.1	0.0	0.0
Unemployment rate	5.7	5.1	0.3	-0.6	-1.0	-1.5
Employment rate	65.2	65.5	0.5	0.3	0.6	0.9
Kingston, Ontario									
Population	140.2	140.3	...	0.1	0.2	1.4	0.1	0.1	1.0
Labour force	89.1	89.8	0.8	0.7	0.1	0.4	0.8	0.1	0.4
Employment	83.8	84.3	0.8	0.5	-0.3	0.2	0.6	-0.4	0.2
Unemployment	5.2	5.5	0.3	0.3	0.4	0.2	5.8	7.8	3.8
Participation rate	63.6	64.0	0.5	0.4	0.0	-0.4
Unemployment rate	5.8	6.1	0.3	0.3	0.4	0.2
Employment rate	59.8	60.1	0.6	0.3	-0.3	-0.4
Peterborough, Ontario									
Population	104.7	104.7	...	0.0	0.0	0.1	0.0	0.0	0.1
Labour force	65.9	66.0	1.1	0.1	0.2	3.0	0.2	0.3	4.8
Employment	62.4	62.7	1.2	0.3	0.5	3.4	0.5	0.8	5.7
Unemployment	3.5	3.3	0.5	-0.2	-0.3	-0.4	-5.7	-8.3	-10.8
Participation rate	62.9	63.0	1.1	0.1	0.2	2.8
Unemployment rate	5.3	5.0	0.7	-0.3	-0.5	-0.9
Employment rate	59.6	59.9	1.1	0.3	0.5	3.2

See notes at the end of the table.

Table 5-1 – continued

Labour force characteristics by census metropolitan area (seasonally adjusted) — 3 month moving average

	January 2017	February 2017	S.E. ¹	Change from			Percent change from		
				last month	last December	twelve months ago	last month	last December	twelve months ago
in thousands (except rates)									
Oshawa, Ontario									
Population	329.6	330.0	...	0.4	0.8	5.6	0.1	0.2	1.7
Labour force	228.3	224.5	1.7	-3.8	-4.2	2.0	-1.7	-1.8	0.9
Employment	216.6	211.7	1.8	-4.9	-5.2	2.7	-2.3	-2.4	1.3
Unemployment	11.7	12.8	0.9	1.1	1.0	-0.8	9.4	8.5	-5.9
Participation rate	69.3	68.0	0.5	-1.3	-1.5	-0.6
Unemployment rate	5.1	5.7	0.4	0.6	0.5	-0.4
Employment rate	65.7	64.2	0.6	-1.5	-1.7	-0.2
Toronto, Ontario									
Population	5,239.5	5,247.4	...	7.9	15.6	94.3	0.2	0.3	1.8
Labour force	3,457.4	3,478.8	10.6	21.4	33.7	5.9	0.6	1.0	0.2
Employment	3,216.7	3,233.2	10.5	16.5	23.8	10.0	0.5	0.7	0.3
Unemployment	240.6	245.7	6.2	5.1	9.9	-4.0	2.1	4.2	-1.6
Participation rate	66.0	66.3	0.2	0.3	0.5	-1.1
Unemployment rate	7.0	7.1	0.2	0.1	0.3	-0.1
Employment rate	61.4	61.6	0.2	0.2	0.3	-0.9
Hamilton, Ontario									
Population	654.0	654.6	...	0.6	1.2	8.1	0.1	0.2	1.3
Labour force	423.3	422.6	3.3	-0.7	-0.5	14.6	-0.2	-0.1	3.6
Employment	398.5	397.5	3.4	-1.0	-1.1	14.7	-0.3	-0.3	3.8
Unemployment	24.8	25.1	1.5	0.3	0.6	-0.2	1.2	2.4	-0.8
Participation rate	64.7	64.6	0.5	-0.1	-0.2	1.5
Unemployment rate	5.9	5.9	0.4	0.0	0.1	-0.3
Employment rate	60.9	60.7	0.5	-0.2	-0.3	1.5
St. Catharines-Niagara, Ontario									
Population	346.3	346.4	...	0.1	0.3	2.4	0.0	0.1	0.7
Labour force	216.7	213.0	2.1	-3.7	-6.7	-11.4	-1.7	-3.0	-5.1
Employment	202.8	199.4	2.2	-3.4	-6.2	-6.0	-1.7	-3.0	-2.9
Unemployment	13.9	13.6	0.9	-0.3	-0.5	-5.3	-2.2	-3.5	-28.0
Participation rate	62.6	61.5	0.6	-1.1	-2.0	-3.7
Unemployment rate	6.4	6.4	0.4	0.0	0.0	-2.0
Employment rate	58.6	57.6	0.6	-1.0	-1.8	-2.1
Kitchener-Cambridge-Waterloo, Ontario									
Population	428.6	429.0	...	0.4	0.8	5.1	0.1	0.2	1.2
Labour force	294.2	296.0	2.4	1.8	2.2	-5.3	0.6	0.7	-1.8
Employment	278.8	279.9	2.4	1.1	0.8	-3.1	0.4	0.3	-1.1
Unemployment	15.4	16.2	1.1	0.8	1.5	-2.2	5.2	10.2	-12.0
Participation rate	68.6	69.0	0.6	0.4	0.4	-2.1
Unemployment rate	5.2	5.5	0.4	0.3	0.5	-0.6
Employment rate	65.0	65.2	0.6	0.2	0.0	-1.6
Brantford, Ontario									
Population	113.8	113.9	...	0.1	0.2	1.5	0.1	0.2	1.3
Labour force	78.2	78.1	0.9	-0.1	0.9	5.4	-0.1	1.2	7.4
Employment	74.9	74.8	0.9	-0.1	1.2	6.3	-0.1	1.6	9.2
Unemployment	3.3	3.3	0.3	0.0	-0.3	-0.9	0.0	-8.3	-21.4
Participation rate	68.7	68.6	0.8	-0.1	0.7	3.9
Unemployment rate	4.2	4.2	0.4	0.0	-0.5	-1.6
Employment rate	65.8	65.7	0.8	-0.1	1.0	4.8
Guelph, Ontario									
Population	131.3	131.5	...	0.2	0.3	1.9	0.2	0.2	1.5
Labour force	95.4	94.8	1.2	-0.6	-0.5	-5.0	-0.6	-0.5	-5.0
Employment	90.2	89.3	1.2	-0.9	-1.7	-6.5	-1.0	-1.9	-6.8
Unemployment	5.2	5.5	0.5	0.3	1.3	1.6	5.8	31.0	41.0
Participation rate	72.7	72.1	0.9	-0.6	-0.5	-4.9
Unemployment rate	5.5	5.8	0.5	0.3	1.4	1.9
Employment rate	68.7	67.9	0.9	-0.8	-1.5	-6.0

See notes at the end of the table.

Table 5-1 – continued

Labour force characteristics by census metropolitan area (seasonally adjusted) — 3 month moving average

	January 2017	February 2017	S.E. ¹	Change from			Percent change from		
				last month	last December	twelve months ago	last month	last December	twelve months ago
in thousands (except rates)									
London, Ontario									
Population	428.5	428.8	...	0.3	0.7	4.5	0.1	0.2	1.1
Labour force	258.4	260.4	2.5	2.0	1.1	-9.8	0.8	0.4	-3.6
Employment	240.6	244.3	2.6	3.7	3.1	-8.5	1.5	1.3	-3.4
Unemployment	17.8	16.1	1.1	-1.7	-1.9	-1.3	-9.6	-10.6	-7.5
Participation rate	60.3	60.7	0.6	0.4	0.1	-3.0
Unemployment rate	6.9	6.2	0.4	-0.7	-0.7	-0.2
Employment rate	56.1	57.0	0.6	0.9	0.7	-2.6
Windsor, Ontario									
Population	283.4	283.5	...	0.1	0.3	2.7	0.0	0.1	1.0
Labour force	171.6	169.9	1.5	-1.7	-1.5	-1.0	-1.0	-0.9	-0.6
Employment	162.3	161.3	1.5	-1.0	-0.5	3.0	-0.6	-0.3	1.9
Unemployment	9.3	8.6	0.8	-0.7	-1.1	-4.1	-7.5	-11.3	-32.3
Participation rate	60.6	59.9	0.5	-0.7	-0.6	-1.0
Unemployment rate	5.4	5.1	0.5	-0.3	-0.6	-2.3
Employment rate	57.3	56.9	0.5	-0.4	-0.2	0.5
Barrie, Ontario									
Population	171.4	171.7	...	0.3	0.5	3.0	0.2	0.3	1.8
Labour force	112.3	115.0	1.8	2.7	4.6	-1.6	2.4	4.2	-1.4
Employment	103.9	106.7	1.9	2.8	4.5	-2.1	2.7	4.4	-1.9
Unemployment	8.4	8.3	0.8	-0.1	0.1	0.5	-1.2	1.2	6.4
Participation rate	65.5	67.0	1.0	1.5	2.5	-2.1
Unemployment rate	7.5	7.2	0.7	-0.3	-0.2	0.5
Employment rate	60.6	62.1	1.1	1.5	2.4	-2.4
Greater Sudbury, Ontario									
Population	140.3	140.3	...	0.0	0.0	0.2	0.0	0.0	0.1
Labour force	88.7	88.4	0.8	-0.3	-1.4	1.1	-0.3	-1.6	1.3
Employment	81.6	81.5	0.8	-0.1	-0.8	1.4	-0.1	-1.0	1.7
Unemployment	7.1	7.0	0.4	-0.1	-0.5	-0.1	-1.4	-6.7	-1.4
Participation rate	63.2	63.0	0.6	-0.2	-1.0	0.7
Unemployment rate	8.0	7.9	0.4	-0.1	-0.5	-0.2
Employment rate	58.2	58.1	0.6	-0.1	-0.6	0.9
Thunder Bay, Ontario									
Population	104.8	104.8	...	0.0	0.0	0.2	0.0	0.0	0.2
Labour force	63.1	63.4	0.6	0.3	0.1	-1.7	0.5	0.2	-2.6
Employment	59.2	59.6	0.6	0.4	0.2	-0.8	0.7	0.3	-1.3
Unemployment	3.9	3.8	0.3	-0.1	-0.1	-0.9	-2.6	-2.6	-19.1
Participation rate	60.2	60.5	0.6	0.3	0.1	-1.7
Unemployment rate	6.2	6.0	0.4	-0.2	-0.2	-1.2
Employment rate	56.5	56.9	0.6	0.4	0.2	-0.8
Winnipeg, Manitoba									
Population	667.9	668.9	...	1.0	1.9	10.9	0.1	0.3	1.7
Labour force	456.5	457.1	1.3	0.6	-0.2	4.5	0.1	0.0	1.0
Employment	425.9	426.4	1.3	0.5	0.7	2.4	0.1	0.2	0.6
Unemployment	30.5	30.7	0.8	0.2	-0.9	2.1	0.7	-2.8	7.3
Participation rate	68.3	68.3	0.2	0.0	-0.3	-0.5
Unemployment rate	6.7	6.7	0.2	0.0	-0.2	0.4
Employment rate	63.8	63.7	0.2	-0.1	-0.1	-0.7
Regina, Saskatchewan									
Population	202.9	203.2	...	0.3	0.5	3.0	0.1	0.2	1.5
Labour force	147.5	148.7	0.8	1.2	1.3	3.3	0.8	0.9	2.3
Employment	139.4	140.9	0.9	1.5	1.5	2.5	1.1	1.1	1.8
Unemployment	8.1	7.8	0.4	-0.3	-0.2	0.8	-3.7	-2.5	11.4
Participation rate	72.7	73.2	0.4	0.5	0.5	0.6
Unemployment rate	5.5	5.2	0.3	-0.3	-0.2	0.4
Employment rate	68.7	69.3	0.4	0.6	0.5	0.2

See notes at the end of the table.

Table 5-1 – continued

Labour force characteristics by census metropolitan area (seasonally adjusted) — 3 month moving average

	January 2017	February 2017	S.E. ¹	Change from			Percent change from		
				last month	last December	twelve months ago	last month	last December	twelve months ago
in thousands (except rates)									
Saskatoon, Saskatchewan									
Population	259.9	260.4	...	0.5	0.9	4.8	0.2	0.3	1.9
Labour force	183.8	182.6	1.0	-1.2	-1.4	3.7	-0.7	-0.8	2.1
Employment	170.0	169.8	1.1	-0.2	-0.3	2.3	-0.1	-0.2	1.4
Unemployment	13.7	12.8	0.6	-0.9	-1.0	1.4	-6.6	-7.2	12.3
Participation rate	70.7	70.1	0.4	-0.6	-0.8	0.1
Unemployment rate	7.5	7.0	0.3	-0.5	-0.5	0.6
Employment rate	65.4	65.2	0.4	-0.2	-0.3	-0.3
Calgary, Alberta									
Population	1,211.4	1,212.8	...	1.4	2.5	17.7	0.1	0.2	1.5
Labour force	907.3	904.3	4.2	-3.0	-2.9	32.4	-0.3	-0.3	3.7
Employment	818.0	819.3	4.4	1.3	3.6	21.8	0.2	0.4	2.7
Unemployment	89.2	85.0	2.7	-4.2	-6.5	10.6	-4.7	-7.1	14.2
Participation rate	74.9	74.6	0.4	-0.3	-0.4	1.6
Unemployment rate	9.8	9.4	0.3	-0.4	-0.7	0.9
Employment rate	67.5	67.6	0.4	0.1	0.2	0.9
Edmonton, Alberta									
Population	1,128.3	1,129.6	...	1.3	2.2	15.8	0.1	0.2	1.4
Labour force	813.3	818.4	3.9	5.1	10.8	-16.5	0.6	1.3	-2.0
Employment	747.7	750.3	4.1	2.6	3.0	-27.0	0.3	0.4	-3.5
Unemployment	65.6	68.2	2.4	2.6	7.9	10.7	4.0	13.1	18.6
Participation rate	72.1	72.5	0.3	0.4	0.9	-2.5
Unemployment rate	8.1	8.3	0.3	0.2	0.8	1.4
Employment rate	66.3	66.4	0.4	0.1	0.1	-3.4
Kelowna, British Columbia									
Population	157.3	157.5	...	0.2	0.4	3.5	0.1	0.3	2.3
Labour force	104.0	102.5	1.4	-1.5	-0.3	5.0	-1.4	-0.3	5.1
Employment	95.3	94.9	1.4	-0.4	1.0	5.3	-0.4	1.1	5.9
Unemployment	8.6	7.6	0.7	-1.0	-1.3	-0.3	-11.6	-14.6	-3.8
Participation rate	66.1	65.1	0.9	-1.0	-0.3	1.8
Unemployment rate	8.3	7.4	0.7	-0.9	-1.3	-0.7
Employment rate	60.6	60.3	0.9	-0.3	0.5	2.1
Abbotsford-Mission, British Columbia									
Population	148.5	148.7	...	0.2	0.3	2.3	0.1	0.2	1.6
Labour force	100.4	99.7	0.8	-0.7	-0.3	3.1	-0.7	-0.3	3.2
Employment	94.2	93.6	0.8	-0.6	-0.5	4.1	-0.6	-0.5	4.6
Unemployment	6.2	6.1	0.4	-0.1	0.2	-1.0	-1.6	3.4	-14.1
Participation rate	67.6	67.0	0.5	-0.6	-0.4	1.0
Unemployment rate	6.2	6.1	0.4	-0.1	0.2	-1.2
Employment rate	63.4	62.9	0.5	-0.5	-0.5	1.8
Vancouver, British Columbia									
Population	2,179.1	2,181.3	...	2.2	4.1	29.9	0.1	0.2	1.4
Labour force	1,429.0	1,433.4	5.8	4.4	1.1	4.9	0.3	0.1	0.3
Employment	1,358.3	1,366.5	5.8	8.2	7.1	25.3	0.6	0.5	1.9
Unemployment	70.7	66.8	3.1	-3.9	-6.1	-20.5	-5.5	-8.4	-23.5
Participation rate	65.6	65.7	0.3	0.1	-0.1	-0.7
Unemployment rate	4.9	4.7	0.2	-0.2	-0.4	-1.4
Employment rate	62.3	62.6	0.3	0.3	0.2	0.3
Victoria, British Columbia									
Population	308.8	309.0	...	0.2	0.4	3.5	0.1	0.1	1.1
Labour force	196.2	196.8	1.7	0.6	0.3	3.6	0.3	0.2	1.9
Employment	187.1	188.2	1.7	1.1	1.6	6.2	0.6	0.9	3.4
Unemployment	9.1	8.6	0.7	-0.5	-1.3	-2.6	-5.5	-13.1	-23.2
Participation rate	63.5	63.7	0.6	0.2	0.0	0.5
Unemployment rate	4.6	4.4	0.4	-0.2	-0.6	-1.4
Employment rate	60.6	60.9	0.6	0.3	0.4	1.3

1. Average standard error of change in two consecutive months (see "Sampling Errors" in Data Quality for further explanations).

Note(s): Estimates in this table are based on 2011 Census boundaries. Related CANSIM Table 282-0135. The sum of individual categories may not always add to the total due to rounding.

Table 5-2
Labour force characteristics by census metropolitan area (seasonally adjusted) — Monthly

	January 2017	February 2017	S.E. ¹	Change from			Percent change from		
				last month	last December	twelve months ago	last month	last December	twelve months ago
in thousands (except rates)									
Montréal, Quebec									
Population	3,405.3	3,407.8	...	2.5	5.6	33.4	0.1	0.2	1.0
Labour force	2,291.9	2,269.6	16.6	-22.3	-12.3	32.6	-1.0	-0.5	1.5
Employment	2,144.2	2,116.5	17.0	-27.7	-10.7	73.3	-1.3	-0.5	3.6
Unemployment	147.7	153.1	11.9	5.4	-1.6	-40.7	3.7	-1.0	-21.0
Participation rate	67.3	66.6	0.5	-0.7	-0.5	0.3
Unemployment rate	6.4	6.7	0.5	0.3	-0.1	-2.0
Employment rate	63.0	62.1	0.5	-0.9	-0.4	1.5
Toronto, Ontario									
Population	5,248.1	5,255.4	...	7.3	16.7	94.9	0.1	0.3	1.8
Labour force	3,479.9	3,502.2	22.1	22.3	47.8	43.1	0.6	1.4	1.2
Employment	3,228.7	3,258.8	21.4	30.1	46.8	53.6	0.9	1.5	1.7
Unemployment	251.2	243.4	14.3	-7.8	1.0	-10.6	-3.1	0.4	-4.2
Participation rate	66.3	66.6	0.4	0.3	0.7	-0.4
Unemployment rate	7.2	6.9	0.4	-0.3	-0.1	-0.4
Employment rate	61.5	62.0	0.4	0.5	0.7	-0.1
Vancouver, British Columbia									
Population	2,181.2	2,183.6	...	2.4	4.6	29.9	0.1	0.2	1.4
Labour force	1,432.0	1,438.2	11.7	6.2	8.3	-0.5	0.4	0.6	0.0
Employment	1,362.4	1,375.8	11.4	13.4	14.4	28.0	1.0	1.1	2.1
Unemployment	69.6	62.4	7.8	-7.2	-6.1	-28.5	-10.3	-8.9	-31.4
Participation rate	65.7	65.9	0.5	0.2	0.3	-0.9
Unemployment rate	4.9	4.3	0.5	-0.6	-0.5	-2.0
Employment rate	62.5	63.0	0.5	0.5	0.5	0.4

1. Average standard error of change in two consecutive months (see "Sampling Errors" in Data Quality for further explanations).

Note(s): Estimates in this table are based on 2011 Census boundaries. Related CANSIM Table 282-0136. The sum of individual categories may not always add to the total due to rounding.

Table 6-1

Labour force characteristics by province and economic region, ¹ unadjusted for seasonality, 3 month moving average ending in February 2016 and February 2017

	Population	Labour force			Participation rate	Unemployment rate	Employment rate
		Labour force	Employment	Unemployment			
	in thousands			percent			
Canada							
2016	29,441.4	19,162.1	17,758.0	1,404.1	65.1	7.3	60.3
2017	29,741.4	19,354.9	18,027.3	1,327.6	65.1	6.9	60.6
Newfoundland and Labrador							
2016	443.3	263.5	222.3	41.3	59.4	15.7	50.1
2017	445.2	259.4	217.3	42.1	58.3	16.2	48.8
Avalon Peninsula [1010]							
2016	233.8	148.7	132.8	15.9	63.6	10.7	56.8
2017	236.4	151.1	132.9	18.2	63.9	12.0	56.2
South Coast-Burin Peninsula and Notre Dame-Central Bonavista Bay [1020, 1040]							
2016	122.3	62.3	47.7	14.6	50.9	23.4	39.0
2017	121.8	60.2	45.7	14.4	49.4	23.9	37.5
West Coast-Northern Peninsula-Labrador [1030]							
2016	87.1	52.5	41.8	10.7	60.3	20.4	48.0
2017	86.9	48.2	38.7	9.5	55.5	19.7	44.5
Prince Edward Island							
2016	121.2	78.0	68.4	9.6	64.4	12.3	56.4
2017	122.6	78.4	69.3	9.2	63.9	11.7	56.5
Nova Scotia							
2016	787.2	478.3	433.7	44.6	60.8	9.3	55.1
2017	790.3	478.4	437.7	40.7	60.5	8.5	55.4
Cape Breton [1210]							
2016	106.4	53.5	43.4	10.1	50.3	18.9	40.8
2017	105.4	54.8	46.3	8.5	52.0	15.5	43.9
North Shore [1220]							
2016	128.6	74.7	67.7	7.0	58.1	9.4	52.6
2017	127.9	75.9	69.4	6.5	59.3	8.6	54.3
Annapolis Valley [1230]							
2016	102.7	58.3	53.4	4.9	56.8	8.4	52.0
2017	102.7	57.6	52.9	4.7	56.1	8.2	51.5
Southern [1240]							
2016	98.1	53.7	47.8	6.0	54.7	11.2	48.7
2017	97.6	52.5	46.8	5.7	53.8	10.9	48.0
Halifax [1250]							
2016	351.4	238.1	221.4	16.7	67.8	7.0	63.0
2017	356.7	237.6	222.3	15.3	66.6	6.4	62.3
New Brunswick							
2016	622.2	376.7	338.6	38.1	60.5	10.1	54.4
2017	624.0	378.2	342.2	36.0	60.6	9.5	54.8
Campbellton-Miramichi [1310]							
2016	128.7	69.1	57.7	11.4	53.7	16.5	44.8
2017	128.0	67.1	56.2	11.0	52.4	16.4	43.9
Moncton-Richibucto [1320]							
2016	177.4	109.2	100.4	8.8	61.6	8.1	56.6
2017	179.4	110.9	100.4	10.5	61.8	9.5	56.0
Saint John-St. Stephen [1330]							
2016	141.9	87.9	80.0	7.9	61.9	9.0	56.4
2017	141.8	91.3	84.1	7.1	64.4	7.8	59.3
Fredericton-Oromocto [1340]							
2016	110.5	71.8	65.3	6.4	65.0	8.9	59.1
2017	111.5	71.6	67.0	4.5	64.2	6.3	60.1

See notes at the end of the table.

Table 6-1 – continued

Labour force characteristics by province and economic region, ¹ unadjusted for seasonality, 3 month moving average ending in February 2016 and February 2017

	Population	Labour force			Participation rate	Unemployment rate	Employment rate
		Labour force	Employment	Unemployment			
	in thousands			percent			
Edmundston-Woodstock [1350]							
2016	63.7	38.8	35.2	3.6	60.9	9.3	55.3
2017	63.3	37.5	34.5	2.9	59.2	7.7	54.5
Quebec							
2016	6,865.8	4,388.5	4,036.2	352.3	63.9	8.0	58.8
2017	6,909.3	4,429.4	4,126.3	303.1	64.1	6.8	59.7
Gaspésie-Îles-de-la-Madeleine [2410]							
2016	77.7	41.1	33.3	7.8	52.9	19.0	42.9
2017	76.9	41.3	35.4	6.0	53.7	14.5	46.0
Bas-Saint-Laurent [2415]							
2016	169.5	94.9	86.0	8.9	56.0	9.4	50.7
2017	168.7	91.7	82.3	9.4	54.4	10.3	48.8
Capitale-Nationale [2420]							
2016	619.3	418.6	396.9	21.7	67.6	5.2	64.1
2017	623.8	428.9	406.3	22.6	68.8	5.3	65.1
Chaudière-Appalaches [2425]							
2016	349.4	228.1	213.5	14.6	65.3	6.4	61.1
2017	350.2	220.6	209.2	11.4	63.0	5.2	59.7
Estrie [2430]							
2016	270.0	165.1	153.6	11.6	61.1	7.0	56.9
2017	271.7	160.5	152.0	8.5	59.1	5.3	55.9
Centre-du-Québec [2433]							
2016	200.8	117.5	109.5	8.0	58.5	6.8	54.5
2017	201.4	128.3	119.0	9.3	63.7	7.2	59.1
Montérégie [2435]							
2016	1,255.3	831.4	779.5	51.8	66.2	6.2	62.1
2017	1,264.0	821.2	773.6	47.6	65.0	5.8	61.2
Montréal [2440]							
2016	1,673.2	1,061.6	945.0	116.7	63.4	11.0	56.5
2017	1,689.0	1,109.8	1,019.8	90.0	65.7	8.1	60.4
Laval [2445]							
2016	353.4	218.1	199.5	18.6	61.7	8.5	56.5
2017	356.7	230.1	210.3	19.7	64.5	8.6	59.0
Lanaudière [2450]							
2016	413.2	268.4	250.3	18.1	65.0	6.7	60.6
2017	416.2	258.3	239.6	18.7	62.1	7.2	57.6
Laurentides [2455]							
2016	495.5	328.5	309.5	19.0	66.3	5.8	62.5
2017	501.1	332.5	316.0	16.5	66.4	5.0	63.1
Outaouais [2460]							
2016	319.3	215.4	200.3	15.1	67.5	7.0	62.7
2017	321.3	208.9	196.5	12.4	65.0	5.9	61.2
Abitibi-Témiscamingue [2465]							
2016	120.5	77.2	72.0	5.2	64.1	6.7	59.8
2017	120.5	79.1	74.0	5.1	65.6	6.4	61.4
Mauricie [2470]							
2016	225.4	130.0	115.3	14.7	57.7	11.3	51.2
2017	225.2	122.2	112.7	9.5	54.3	7.8	50.0
Saguenay-Lac-Saint-Jean [2475]							
2016	231.7	135.8	121.8	14.0	58.6	10.3	52.6
2017	231.1	137.6	125.4	12.1	59.5	8.8	54.3

See notes at the end of the table.

Table 6-1 – continued

Labour force characteristics by province and economic region, 1 unadjusted for seasonality, 3 month moving average ending in February 2016 and February 2017

	Population	Labour force			Participation rate	Unemployment rate	Employment rate
		Labour force	Employment	Unemployment			
	in thousands			percent			
Côte-Nord and Nord-du-Québec [2480, 2490]							
2016	91.9	56.7	50.3	6.4	61.7	11.3	54.7
2017	91.5	58.3	54.1	4.3	63.7	7.4	59.1
Ontario							
2016	11,455.0	7,384.4	6,896.8	487.6	64.5	6.6	60.2
2017	11,603.7	7,456.9	6,996.0	460.9	64.3	6.2	60.3
Ottawa [3510]							
2016	1,102.7	728.5	681.3	47.2	66.1	6.5	61.8
2017	1,114.8	739.4	702.2	37.2	66.3	5.0	63.0
Kingston-Pembroke [3515]							
2016	377.6	213.7	198.0	15.6	56.6	7.3	52.4
2017	379.2	230.1	219.8	10.3	60.7	4.5	58.0
Muskoka-Kawartha [3520]							
2016	327.2	166.6	158.4	8.2	50.9	4.9	48.4
2017	329.3	196.8	185.8	11.0	59.8	5.6	56.4
Toronto [3530]							
2016	5,405.2	3,588.8	3,345.0	243.7	66.4	6.8	61.9
2017	5,499.3	3,605.0	3,361.3	243.6	65.6	6.8	61.1
Kitchener-Waterloo-Barrie [3540]							
2016	1,084.3	752.8	710.9	41.9	69.4	5.6	65.6
2017	1,100.8	737.8	696.5	41.3	67.0	5.6	63.3
Hamilton-Niagara Peninsula [3550]							
2016	1,204.3	761.9	709.5	52.4	63.3	6.9	58.9
2017	1,218.1	771.7	726.2	45.5	63.4	5.9	59.6
London [3560]							
2016	555.8	346.2	326.8	19.4	62.3	5.6	58.8
2017	561.2	345.1	327.9	17.1	61.5	5.0	58.4
Windsor-Sarnia [3570]							
2016	524.5	311.8	288.0	23.8	59.4	7.6	54.9
2017	526.6	310.8	291.7	19.1	59.0	6.1	55.4
Stratford-Bruce Peninsula [3580]							
2016	245.9	150.7	142.1	8.5	61.3	5.6	57.8
2017	246.3	158.8	148.7	10.0	64.5	6.3	60.4
Northeast [3590]							
2016	456.4	257.0	237.5	19.5	56.3	7.6	52.0
2017	455.8	255.7	236.5	19.2	56.1	7.5	51.9
Northwest [3595]							
2016	171.2	106.5	99.2	7.3	62.2	6.9	57.9
2017	172.3	105.8	99.3	6.5	61.4	6.1	57.6
Manitoba							
2016	992.9	663.9	624.5	39.3	66.9	5.9	62.9
2017	1,006.0	669.1	628.9	40.2	66.5	6.0	62.5
Southeast [4610]							
2016	90.2	60.6	56.9	3.6	67.2	5.9	63.1
2017	92.0	62.5	59.4	3.1	67.9	5.0	64.6
South Central and North Central [4620, 4640]							
2016	85.0	54.5	52.6	2.0	64.1	3.7	61.9
2017	85.9	55.0	53.4	1.7	64.0	3.1	62.2
Southwest [4630]							
2016	88.1	57.7	54.2	3.5	65.5	6.1	61.5
2017	88.8	55.3	52.4	2.9	62.3	5.2	59.0

See notes at the end of the table.

Table 6-1 – continued

Labour force characteristics by province and economic region, 1 unadjusted for seasonality, 3 month moving average ending in February 2016 and February 2017

	Population	Labour force			Participation rate	Unemployment rate	Employment rate
		Labour force	Employment	Unemployment			
	in thousands			percent			
Winnipeg [4650]							
2016	598.7	406.3	380.8	25.5	67.9	6.3	63.6
2017	608.1	409.5	381.6	27.9	67.3	6.8	62.8
Interlake [4660]							
2016	75.3	48.1	45.1	3.0	63.9	6.2	59.9
2017	75.7	49.0	46.3	2.7	64.7	5.5	61.2
Parklands and Northern [4670, 4680]							
2016	55.5	36.6	34.9	1.7	65.9	4.6	62.9
2017	55.5	37.7	35.8	1.9	67.9	5.0	64.5
Saskatchewan							
2016	865.4	598.7	563.1	35.6	69.2	5.9	65.1
2017	872.9	601.4	561.7	39.7	68.9	6.6	64.3
Regina-Moose Mountain [4710]							
2016	264.9	191.7	183.0	8.7	72.4	4.5	69.1
2017	267.8	193.0	182.7	10.3	72.1	5.3	68.2
Swift Current-Moose Jaw [4720]							
2016	82.3	54.5	52.2	2.2	66.2	4.0	63.4
2017	81.8	54.4	52.7	1.8	66.5	3.3	64.4
Saskatoon-Biggar [4730]							
2016	298.0	205.7	192.7	13.0	69.0	6.3	64.7
2017	302.5	208.0	193.2	14.8	68.8	7.1	63.9
Yorkton-Melville [4740]							
2016	62.1	37.7	34.8	2.8	60.7	7.4	56.0
2017	61.4	40.5	37.9	2.6	66.0	6.4	61.7
Prince Albert and Northern [4750, 4760]							
2016	158.0	109.1	100.3	8.8	69.1	8.1	63.5
2017	159.4	105.5	95.3	10.2	66.2	9.7	59.8
Alberta							
2016	3,382.1	2,444.3	2,257.7	186.6	72.3	7.6	66.8
2017	3,411.7	2,460.1	2,248.8	211.3	72.1	8.6	65.9
Lethbridge-Medicine Hat [4810]							
2016	230.3	158.4	148.0	10.4	68.8	6.6	64.3
2017	229.6	155.2	144.9	10.3	67.6	6.6	63.1
Camrose-Drumheller [4820]							
2016	161.8	107.8	101.0	6.8	66.6	6.3	62.4
2017	160.6	108.3	97.8	10.5	67.4	9.7	60.9
Calgary [4830]							
2016	1,281.2	925.9	847.5	78.4	72.3	8.5	66.1
2017	1,298.5	956.8	870.1	86.7	73.7	9.1	67.0
Banff-Jasper-Rocky Mountain House and Athabasca-Grande Prairie-Peace River [4840, 4870]							
2016	277.3	197.0	181.4	15.6	71.0	7.9	65.4
2017	276.0	195.9	180.9	15.0	71.0	7.7	65.5
Red Deer [4850]							
2016	171.6	117.5	107.7	9.8	68.5	8.3	62.8
2017	172.7	122.2	111.2	11.0	70.8	9.0	64.4
Edmonton [4860]							
2016	1,141.7	847.4	790.1	57.3	74.2	6.8	69.2
2017	1,156.0	832.4	762.8	69.6	72.0	8.4	66.0
Wood Buffalo-Cold Lake [4880]							
2016	118.2	90.4	82.0	8.4	76.5	9.3	69.4
2017	118.3	89.2	81.1	8.1	75.4	9.1	68.6

See notes at the end of the table.

Table 6-1 – continued

Labour force characteristics by province and economic region, 1 unadjusted for seasonality, 3 month moving average ending in February 2016 and February 2017

	Population	Labour force			Participation rate	Unemployment rate	Employment rate
		Labour force	Employment	Unemployment			
	in thousands			percent			
British Columbia							
2016	3,906.3	2,485.8	2,316.7	169.1	63.6	6.8	59.3
2017	3,956.0	2,543.5	2,399.1	144.4	64.3	5.7	60.6
Vancouver Island and Coast [5910]							
2016	658.3	386.1	357.2	28.9	58.7	7.5	54.3
2017	665.3	402.1	379.0	23.1	60.4	5.7	57.0
Lower Mainland-Southwest [5920]							
2016	2,442.2	1,596.6	1,499.2	97.5	65.4	6.1	61.4
2017	2,477.5	1,610.8	1,534.0	76.8	65.0	4.8	61.9
Thompson-Okanagan [5930]							
2016	433.5	262.0	237.7	24.3	60.4	9.3	54.8
2017	439.2	274.1	250.6	23.5	62.4	8.6	57.1
Kootenay [5940]							
2016	122.1	71.5	66.1	5.4	58.6	7.6	54.1
2017	122.6	80.5	75.1	5.4	65.7	6.7	61.3
Cariboo [5950]							
2016	127.6	82.8	76.7	6.1	64.9	7.4	60.1
2017	127.9	88.0	79.5	8.5	68.8	9.7	62.2
North Coast and Nechako [5960, 5970]							
2016	66.6	43.2	40.3	2.9	64.9	6.7	60.5
2017	67.1	43.4	40.2	3.2	64.7	7.4	59.9
Northeast [5980]							
2016	56.1	43.6	39.6	4.0	77.7	9.2	70.6
2017	56.5	44.6	40.7	3.9	78.9	8.7	72.0

1. For geographic descriptions of economic regions, refer to the Guide to the Labour Force Survey (catalogue number 71-543-GIE).

Note(s): Estimates in this table are based on 2011 Census boundaries. Related CANSIM table 282-0122. As a result of the wildfire affecting northern Alberta, LFS data for the census agglomeration of Wood Buffalo were not collected from May to July 2016. Data collection resumed in August 2016. Estimates for the economic region of Wood Buffalo–Cold Lake are not available for June, July, August, and September 2016.

Table 6-2
Labour force characteristics by territory (seasonally adjusted) - 3 month moving average

	January 2017	February 2017	S.E. ¹	Change from			Percent change from		
				last month	last December	twelve months ago	last month	last December	twelve months ago
in thousands (except rates)									
Yukon ²									
Population	28.4	28.5	...	0.1	0.1	0.3	0.4	0.4	1.1
Labour force	21.7	21.8	0.2	0.1	-0.1	0.9	0.5	-0.5	4.3
Employment	20.7	20.9	0.3	0.2	0.0	1.3	1.0	0.0	6.6
Unemployment	0.9	0.9	0.1	0.0	-0.1	-0.4	0.0	-10.0	-30.8
Participation rate	76.4	76.5	0.9	0.1	-0.6	2.4
Unemployment rate	4.1	4.1	0.7	0.0	-0.5	-2.1
Employment rate	72.9	73.3	0.9	0.4	-0.3	3.8
Northwest Territories ³									
Population	32.4	32.3	...	-0.1	-0.1	0.1	-0.3	-0.3	0.3
Labour force	22.8	22.8	0.3	0.0	-0.9	-1.7	0.0	-3.8	-6.9
Employment	21.2	21.1	0.3	-0.1	-1.0	-1.3	-0.5	-4.5	-5.8
Unemployment	1.6	1.6	0.2	0.0	0.0	-0.5	0.0	0.0	-23.8
Participation rate	70.4	70.6	0.9	0.2	-2.5	-5.5
Unemployment rate	7.0	7.0	0.7	0.0	0.2	-1.6
Employment rate	65.4	65.3	1.0	-0.1	-2.9	-4.3
Nunavut ⁴									
Population	24.2	24.2	...	0.0	0.0	0.1	0.0	0.0	0.4
Labour force	15.3	15.5	0.2	0.2	-0.2	-0.1	1.3	-1.3	-0.6
Employment	13.4	13.1	0.2	-0.3	-0.4	-0.1	-2.2	-3.0	-0.8
Unemployment	1.9	2.4	0.2	0.5	0.2	0.0	26.3	9.1	0.0
Participation rate	63.2	64.0	0.8	0.8	-0.8	-0.8
Unemployment rate	12.5	15.4	1.0	2.9	1.4	0.3
Employment rate	55.3	54.2	0.9	-1.1	-1.5	-0.8

1. Average standard error of change in two consecutive months (see "Sampling Errors" in Data Quality for further explanations).
2. Since 1992, the Labour force survey (LFS) has been conducted in the Yukon, using an alternative methodology that accommodates some of the operational difficulties inherent to remote locales. These estimates are not included in the national totals. In 1995, the LFS in the Yukon underwent a sample redesign. One result of the redesign was that the covered population increased from 85% to 92%, which is reflected by the sharp increase in the three month moving averages estimates of January, February and March of 1995 for all the level estimates. Users are therefore warned to be cautious when comparing estimates before January 1995 to estimates for January 1995 and forward.
3. Since 2001, the Labour force survey (LFS) has been administered in the Northwest Territories, using an alternative methodology that accommodates some of the operational difficulties inherent to remote locales. These estimates are not included in national totals.
4. Since 2004, the Labour force survey (LFS) has been administered in Nunavut, using an alternative methodology that accommodates some of the operational difficulties inherent to remote locales. These estimates are 3-month moving averages and are not included in national totals. From January 2004 to December 2007, estimates represent about 70% of all Nunavut residents aged 15 and over. Starting in January 2008, coverage was extended to 92%, so that by March 2008, the 3-month moving average is completely based on the extended coverage. Because of the large difference in coverage, users are recommended not to compare estimates prior to January 2008 with data afterwards. The January and February 2008 3-month moving average estimates are based on a mix of both coverages, since the extended coverage was introduced in January 2008. Estimates from January 2004 to December 2007 are based on the 10 largest communities in Nunavut: Iqaluit, Rankin Inlet, Cambridge Bay, Kugluktuk, Baker Lake, Arviat, Pond Inlet, Cape Dorset, Pangnirtung, Igloolik. Estimates from March 2008 to present cover the above communities as well as: Taloyoak, Gjoa Haven, Kugaaruk, Coral Harbour, Repulse Bay, Qikiqtarjuaq, Arctic Bay, Hall Beach, Clyde River.

Note(s): Related CANSIM table 282-0100.

Table 7
Average usual hours and wages of employees by selected characteristics, Canada, unadjusted for seasonality

	Employees				Full-time			Part-time		
	Number	Average weekly hours	Average weekly wages	Average hourly wages	Number	Average weekly hours	Average weekly wages	Number	Average weekly hours	Average weekly wages
	thousands		current dollars		thousands		current dollars	thousands		current dollars
February 2017										
15 years and over	15,260.8	34.8	947.17	26.11	12,307.6	39.1	1,099.79	2,953.2	16.8	311.13
15 to 24 years	2,203.8	25.0	405.68	15.06	975.2	38.4	677.93	1,228.5	14.4	189.57
25 years and over	13,057.0	36.5	1,038.57	27.97	11,332.4	39.2	1,136.10	1,724.7	18.5	397.72
Males	7,609.3	37.0	1,069.33	27.93	6,598.8	40.2	1,189.75	1,010.6	16.1	283.04
Females	7,651.5	32.6	825.69	24.29	5,708.9	37.8	995.81	1,942.6	17.1	325.74
Union coverage										
Union coverage	4,665.2	35.4	1,074.57	29.79	3,954.4	38.5	1,185.73	710.8	18.6	456.13
No union coverage	10,595.6	34.5	891.08	24.49	8,353.2	39.4	1,059.11	2,242.4	16.2	265.17
Job permanency										
Permanent	13,433.1	35.7	988.44	26.73	11,299.6	39.1	1,112.95	2,133.6	17.8	329.01
Temporary	1,827.6	27.9	643.88	21.52	1,008.0	39.1	952.27	819.6	14.1	264.59
Occupation										
Management occupations	1,037.3	39.3	1,643.50	41.93	1,004.1	40.0	1,677.72	33.1	17.7	606.66
Business, finance and administration occupations	2,625.2	35.3	935.92	25.98	2,262.9	38.2	1,028.53	362.3	17.3	357.43
Natural and applied sciences and related occupations	1,210.2	38.1	1,371.52	35.90	1,156.3	39.1	1,411.60	54.0	17.0	512.97
Health occupations	1,126.9	33.8	1,005.74	29.41	868.5	38.0	1,144.96	258.4	19.7	537.76
Occupations in education, law and social, community and government services	1,848.1	33.1	1,091.88	32.01	1,450.2	37.7	1,273.94	398.0	16.3	428.52
Occupations in art, culture, recreation and sport	360.9	28.4	726.69	22.99	226.0	38.7	1,042.86	134.9	11.2	197.01
Sales and service occupations	3,978.3	30.3	539.80	16.71	2,490.4	38.4	727.07	1,487.9	16.7	226.34
Trades, transport and equipment operators and related occupations	2,057.7	39.6	1,031.98	25.67	1,898.1	41.4	1,091.44	159.7	17.6	325.13
Natural resources, agriculture and related production occupations	226.8	41.7	1,145.24	26.19	204.0	44.9	1,248.30	22.8	13.2	224.41
Occupations in manufacturing and utilities	789.3	38.9	872.52	22.08	747.1	40.2	906.12	42.1	17.1	277.07
February 2016										
15 years and over	14,923.1	34.9	937.69	25.77	12,031.0	39.2	1,087.84	2,892.1	17.1	313.05
15 to 24 years	2,193.4	25.8	411.47	14.79	1,017.8	38.6	671.21	1,175.6	14.6	186.60
25 years and over	12,729.7	36.5	1,028.36	27.67	11,013.2	39.2	1,126.34	1,716.5	18.8	399.66
Males	7,443.3	37.3	1,067.63	27.75	6,509.2	40.3	1,181.71	934.2	16.0	272.72
Females	7,479.8	32.5	808.38	23.81	5,521.9	37.8	977.18	1,957.9	17.6	332.30
Union coverage										
Union coverage	4,616.4	35.5	1,061.11	29.42	3,910.6	38.5	1,167.81	705.8	19.2	469.84
No union coverage	10,306.7	34.6	882.41	24.14	8,120.4	39.5	1,049.33	2,186.3	16.4	262.44
Job permanency										
Permanent	13,160.4	35.9	980.77	26.45	11,087.8	39.2	1,101.72	2,072.6	18.1	333.70
Temporary	1,762.8	27.6	616.06	20.76	943.2	38.9	924.71	819.5	14.6	260.83
Occupation										
Management occupations	931.3	39.8	1,632.16	41.01	906.4	40.4	1,660.85	24.9	18.8	589.47
Business, finance and administration occupations	2,601.7	35.3	926.93	25.77	2,223.4	38.3	1,023.25	378.3	17.9	360.76
Natural and applied sciences and related occupations	1,260.8	38.4	1,385.68	36.07	1,216.8	39.1	1,416.52	44.0	17.9	532.62
Health occupations	1,116.7	33.3	974.83	29.02	840.7	37.7	1,112.64	276.1	19.9	555.16
Occupations in education, law and social, community and government services	1,839.9	33.5	1,080.35	31.34	1,449.0	38.0	1,255.14	390.9	16.9	432.44
Occupations in art, culture, recreation and sport	320.4	28.9	699.80	22.33	202.8	38.5	979.29	117.6	12.3	217.86
Sales and service occupations	3,865.3	30.2	531.89	16.42	2,403.6	38.4	721.35	1,461.7	16.7	220.36
Trades, transport and equipment operators and related occupations	1,979.7	39.6	1,032.71	25.72	1,836.2	41.4	1,088.46	143.5	17.2	319.36
Natural resources, agriculture and related production occupations	222.8	42.0	1,074.20	24.55	201.7	44.8	1,161.48	21.1	15.4	240.62
Occupations in manufacturing and utilities	784.5	39.4	859.44	21.48	750.5	40.3	885.26	34.0	19.0	289.71

Note(s): Related CANSIM table 282-0167.

Table 8
Regional unemployment rates used by the Employment Insurance program, ¹ seasonally adjusted, 3-month moving average

Region	Effective from March 12, 2017 to April 8, 2017
	percent
Newfoundland and Labrador	
01. St. John's, Newfoundland and Labrador	9.2
02. Newfoundland and Labrador ²	18.9
Prince Edward Island ³	
03. Charlottetown, Prince Edward Island	7.1
04. Prince Edward Island ⁴	13.1
Nova Scotia	
05. Eastern Nova Scotia	14.8
06. Western Nova Scotia	8.7
07. Halifax, Nova Scotia	6.1
New Brunswick	
08. Fredericton-Moncton-Saint John, New Brunswick	7.7
09. Madawaska-Charlotte, New Brunswick	8.0
10. Restigouche-Albert, New Brunswick	13.5
Quebec	
11. Gaspésie-Îles-de-la-Madeleine, Quebec	14.0
12. Quebec, Quebec	4.4
13. Trois-Rivières, Quebec	6.6
14. South Central Quebec	4.9
15. Sherbrooke, Quebec	5.5
16. Montérégie, Quebec	6.6
17. Montreal, Quebec	6.9
18. Central Quebec	7.1
19. North Western Quebec	7.7
20. Lower Saint Lawrence and North Shore, Quebec	9.7
21. Hull, Quebec	5.6
22. Chicoutimi-Jonquière, Quebec	7.1
Ontario	
23. Ottawa, Ontario	5.1
24. Eastern Ontario	5.9
25. Kingston, Ontario	6.1
26. Central Ontario	6.4
27. Oshawa, Ontario	5.9
28. Toronto, Ontario	7.2
29. Hamilton, Ontario	6.0
30. St. Catharines, Ontario	6.5
31. London, Ontario	6.5
32. Niagara, Ontario	7.1
33. Windsor, Ontario	5.8
34. Kitchener, Ontario	5.5
35. Huron, Ontario	6.7
36. South Central Ontario	4.7
37. Sudbury, Ontario	7.6
38. Thunder Bay, Ontario	5.6
39. Northern Ontario	12.0
Manitoba	
40. Winnipeg, Manitoba	6.6
41. Southern Manitoba	6.6
42. Northern Manitoba	30.8
Saskatchewan	
43. Regina, Saskatchewan	5.1
44. Saskatoon, Saskatchewan	7.0
45. Southern Saskatchewan	7.5
46. Northern Saskatchewan	20.5

See notes at the end of the table.

Table 8 – continued

Regional unemployment rates used by the Employment Insurance program, ¹ seasonally adjusted, 3-month moving average

Region	Effective from March 12, 2017 to April 8, 2017
	percent
Alberta	
47. Calgary, Alberta	9.5
48. Edmonton, Alberta	8.4
49. Northern Alberta	12.7
50. Southern Alberta	8.7
British Columbia	
51. Southern Interior British Columbia	8.8
52. Abbotsford, British Columbia	6.3
53. Vancouver, British Columbia	4.7
54. Victoria, British Columbia	5.2
55. Southern Coastal British Columbia	6.8
56. Northern British Columbia	12.7
Territories ^{3, 5}	
57. Whitehorse, Yukon ⁶	5.6
58. Yukon	5.9
59. Yellowknife, Northwest Territories	4.4
60. Northwest Territories ⁷	10.2
61. Iqaluit, Nunavut	9.7
62. Nunavut ⁸	18.7

1. The boundaries of these regions are determined by Employment and Social Development Canada (ESDC). For geographic descriptions and maps of employment insurance regions, see the ESDC website: <http://srv129.services.gc.ca/eiregions/en/geocont.aspx>.

2. This region excludes St. John's.

3. Prince Edward Island as well as the territories are each comprised of two regions effective October 12, 2014.

4. This region excludes Charlottetown.

5. The monthly regional unemployment rates for EI purposes in the territories are subject to the greater of a seasonally adjusted 3-month-moving average or 12-month-moving average.

6. This region excludes Whitehorse.

7. This region excludes Yellowknife.

8. This region excludes Iqaluit.

Note(s): Related CANSIM table 282-0168. All regions are based on the 1996 Census boundaries, with the exception of those in Prince Edward Island and in the territories, which respect the 2011 Census boundaries.

Data quality

Definitions and explanations

The **labour force** is composed of those members of the civilian non-institutional population 15 years of age and over who, during the reference week, were employed or unemployed.

Employed persons are those who, during the reference week:

- (a) did any work at all at a job or business;
- (b) had a job but were not at work.

A person is considered to be **full-time** if his/her usual hours at the main job are 30 or more hours per week. When the number of hours worked at the main job is usually less than 30 hours per week then he/she is considered to be **part-time**.

Unemployed persons are those who, during the reference week:

- (a) were without work, had actively looked for work in the past four weeks (ending with reference week) and were available for work;
- (b) had not actively looked for work in the past four weeks but were on temporary layoff and were available for work;
- (c) had not actively looked for work but had a new job to start within four weeks from the reference week and were available for work.

Persons in the civilian non-institutional population 15 years of age and over who, during the reference week, were neither employed nor unemployed are classified as **not in the labour force**.

The **unemployment rate** represents the number of unemployed persons expressed as a percentage of the labour force (employed and unemployed). The unemployment rate for a particular group (for example, age, sex, or marital status) is the number unemployed in that group expressed as a percentage of the labour force for that group.

The **participation rate** represents the total labour force expressed as a percentage of the population aged 15 years and over. The participation rate for a particular group (for example, women aged 25 years and over) is the labour force in that group expressed as a percentage of the population for that group.

The **employment rate** represents the number of employed persons expressed as a percentage of the population aged 15 years and over. The employment rate for a particular group (for example, age, sex, marital status, or province) is the number employed in that group expressed as a percentage of the population for that group.

The **part-time rate** represents the number of persons employed part-time expressed as a percentage of the employed. The part-time rate for a particular group (for example, age or sex) is the number of persons employed part-time in that group expressed as a percentage of the employed for that group.

All geographic regions are based on the 2011 Census boundaries.

Seasonal adjustment

Fluctuations in economic time series are caused by seasonal, cyclical and irregular movements. A seasonally adjusted series is one from which seasonal movements have been eliminated. Seasonal movements are defined as those which are caused by regular annual events such as climate, holidays, vacation periods and cycles related to crops, production and retail sales associated with Christmas and Easter. The seasonally adjusted series contains irregular as well as longer-term cyclical fluctuations.

The seasonally adjusted series are revised each year to take into account current data and to generate new forecast factors for the next twelve months. The data are therefore subject to slight revisions in future issues of this publication.

For more information on seasonal adjustment, see *Seasonally adjusted data – Frequently asked questions*.

Sampling variability of estimates

Estimates in this publication are based on the Labour Force Survey, a monthly survey of approximately 56,000 households across Canada. Because the entire population is not surveyed, the estimates are subject to sampling error. While the published estimate is the best available indicator of the real value, changes in the level of any estimates between two months can be the result of a true change, or sampling variability. The sampling error can be estimated by calculating the standard error for the published estimate or statistic. These standard errors have been included in the publication tables in order to assist users in interpreting the data. They are based on 12-month averages and are updated twice a year, in February and August.

Interpretation based on standard error

Approximately two-thirds (68%) of the time, a change greater than the sampling error indicates a real change. The larger the change compared to the standard error, the better the chance that we are observing a real change, as opposed to a change due to sampling variability. At the 95% confidence level, the change in the estimate must be greater than twice the standard error in order to ensure that change is real.

Movements in estimates that are smaller than the standard error are less likely to reflect a real change and more likely to be due to sampling variability. While the above is true for monthly movements, one can have more confidence in a series of consecutive movements in the same direction, even though some of the monthly movements may be smaller than the standard error.

Interpretation based on confidence intervals

Confidence intervals provide another way of looking at the variability inherent in estimates of sample surveys. To illustrate how to calculate the confidence interval, let us say that one month the published estimate for total employment rose by 16,000 to reach 18,000,000. The associated standard error for the movement estimate is 29,500. The standard error used to interpret the movement estimate indicates that:

- There are approximately two chances in three (68%) that the real value of the movement between the two months falls within the range -13,500 to +45,500 (16,000 + or – one standard error).
- There are approximately nine chances in ten (90%) that the real value of the movement between the two months falls within the range -31,200 to +63,200 (16,000 + or – 1.6 times the standard error).
- There are approximately nineteen chances in twenty (95%) that the real value of the movement between the two months falls within the range -43,000 to +75,000 (16,000 + or – two standard errors).

For more detailed explanations on the sampling variability of estimates, and in particular for information on how to assess the variability of level estimates, consult the **Data quality** section of the *Guide to the Labour Force Survey (71-543-G)*.

Documentation

For more detailed information about the Labour Force Survey, see the following documents:

- Overview of the Labour Force Survey (LFS) 3701
- *Guide to the Labour Force Survey* (71-543-G)
- *Methodology of the Canadian Labour Force Survey* (71-526-X)
- *LFS geographical maps*