

Catalogue no. 71-001-X
ISSN 1492-5478

Labour Force Information

September 10 to 16, 2017



Release date: October 6, 2017



Statistics
Canada

Statistique
Canada

Canada

How to obtain more information

For information about this product or the wide range of services and data available from Statistics Canada, visit our website, www.statcan.gc.ca.

You can also contact us by

email at STATCAN.infostats-infostats.STATCAN@canada.ca

telephone, from Monday to Friday, 8:30 a.m. to 4:30 p.m., at the following numbers:

- | | |
|---|----------------|
| • Statistical Information Service | 1-800-263-1136 |
| • National telecommunications device for the hearing impaired | 1-800-363-7629 |
| • Fax line | 1-514-283-9350 |

Depository Services Program

- | | |
|------------------|----------------|
| • Inquiries line | 1-800-635-7943 |
| • Fax line | 1-800-565-7757 |

Standards of service to the public

Statistics Canada is committed to serving its clients in a prompt, reliable and courteous manner. To this end, Statistics Canada has developed standards of service that its employees observe. To obtain a copy of these service standards, please contact Statistics Canada toll-free at 1-800-263-1136. The service standards are also published on www.statcan.gc.ca under “Contact us” > “Standards of service to the public.”

Note of appreciation

Canada owes the success of its statistical system to a long-standing partnership between Statistics Canada, the citizens of Canada, its businesses, governments and other institutions. Accurate and timely statistical information could not be produced without their continued co-operation and goodwill.

Standard table symbols

The following symbols are used in Statistics Canada publications:

- . not available for any reference period
- .. not available for a specific reference period
- ... not applicable
- 0 true zero or a value rounded to zero
- 0^s value rounded to 0 (zero) where there is a meaningful distinction between true zero and the value that was rounded
- ^P preliminary
- ^r revised
- X suppressed to meet the confidentiality requirements of the *Statistics Act*
- ^E use with caution
- F too unreliable to be published
- * significantly different from reference category ($p < 0.05$)

Published by authority of the Minister responsible for Statistics Canada

© Minister of Industry, 2017

All rights reserved. Use of this publication is governed by the Statistics Canada [Open Licence Agreement](#).

An HTML version is also available.

Cette publication est aussi disponible en français.

Publication information

Special requests (\$)

Custom tabulations can be arranged on an ad hoc or regular basis. This service enables you to specify tables and time series to meet your own requirements. The cost varies according to the request. For more information, contact us toll-free at 1-866-873-8788 or e-mail us at statcan.labour-travail.statcan@canada.ca.

Schedule of LFS releases

Release date

- February 10, 2017
- March 10, 2017
- April 7, 2017
- May 5, 2017
- June 9, 2017
- July 7, 2017
- August 4, 2017
- September 8, 2017
- October 6, 2017
- November 3, 2017
- December 1, 2017
- January 5, 2018

Reference period

- January 15 to 21, 2017
- February 12 to 18, 2017
- March 12 to 18, 2017
- April 9 to 15, 2017
- May 14 to 20, 2017
- June 11 to 17, 2017
- July 9 to 15, 2017
- August 13 to 19, 2017
- September 10 to 16, 2017
- October 8 to 14, 2017
- November 5 to 11, 2017
- December 3 to 9, 2017

Table of contents

The Daily release	6
Highlights	6
Charts	7
Chart 1 Employment indexes, Canada, seasonally adjusted	7
Chart 2 Unemployment, employment, and participation rates, Canada, seasonally adjusted	8
Chart 3 Employment indexes by industry, Canada, seasonally adjusted	9
Chart 4 Employment indexes by industry, Canada, seasonally adjusted	10
Chart 5 Employment indexes by industry, Canada, seasonally adjusted	11
Chart 6 Employment indexes by province, Canada, seasonally adjusted	12
Chart 8 Unemployment rate of youth aged 15 to 24, Canada, January 1976 to September 2017	14
Chart 9 Labour force participation rates of youth aged 15 to 24, Canada, 1976 to 2016	15
Chart 10 Proportion of youth aged 15 to 24 working part-time, Canada, 1976 to 2016	16
Statistical tables	17
Table 1 Labour force characteristics by age and sex, Canada, seasonally adjusted	17
Table 2 Employment by class of worker and industry, Canada, seasonally adjusted	19
Table 3 Labour force characteristics by province, seasonally adjusted	20
Table 4-1 Selected labour force characteristics (seasonally adjusted) – Newfoundland and Labrador	22
Table 4-2 Selected labour force characteristics (seasonally adjusted) – Prince Edward Island	23
Table 4-3 Selected labour force characteristics (seasonally adjusted) – Nova Scotia	24
Table 4-4 Selected labour force characteristics (seasonally adjusted) – New Brunswick	25
Table 4-5 Selected labour force characteristics (seasonally adjusted) – Quebec	26
Table 4-6 Selected labour force characteristics (seasonally adjusted) – Ontario	27
Table 4-7 Selected labour force characteristics (seasonally adjusted) – Manitoba	28
Table 4-8 Selected labour force characteristics (seasonally adjusted) – Saskatchewan	29
Table 4-9 Selected labour force characteristics (seasonally adjusted) – Alberta	30
Table 4-10 Selected labour force characteristics (seasonally adjusted) – British Columbia	31

Table 5-1 Labour force characteristics by census metropolitan area (seasonally adjusted) — three-month moving average.....	32
Table 5-2 Labour force characteristics by census metropolitan area (seasonally adjusted) — Monthly	37
Table 6-1 Labour force characteristics — by province and economic region, unadjusted for seasonality, three-month moving average ending in September 2016 and September 2017	38
Table 6-2 Labour force characteristics — by territory (seasonally adjusted) - three-month moving average.....	42
Table 7 Average usual hours and wages of employees by selected characteristics, Canada, unadjusted for seasonality	43
Table 8 Regional unemployment rates used by the Employment Insurance program, seasonally adjusted, three-month moving average	45
Data quality	47
Related products	49

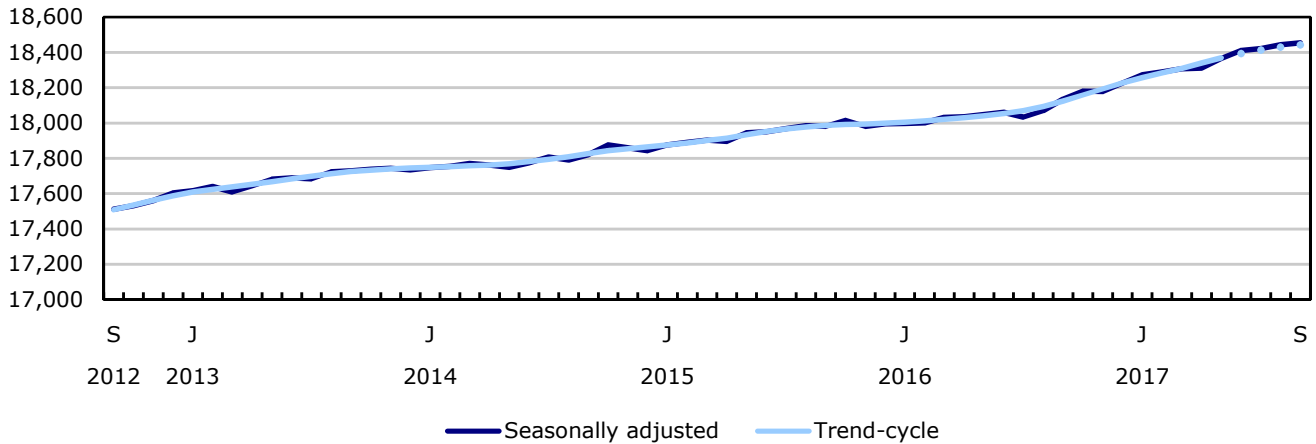
Labour Force Information

Highlights

Figure 1
Employment and unemployment rate, Canada, seasonally adjusted

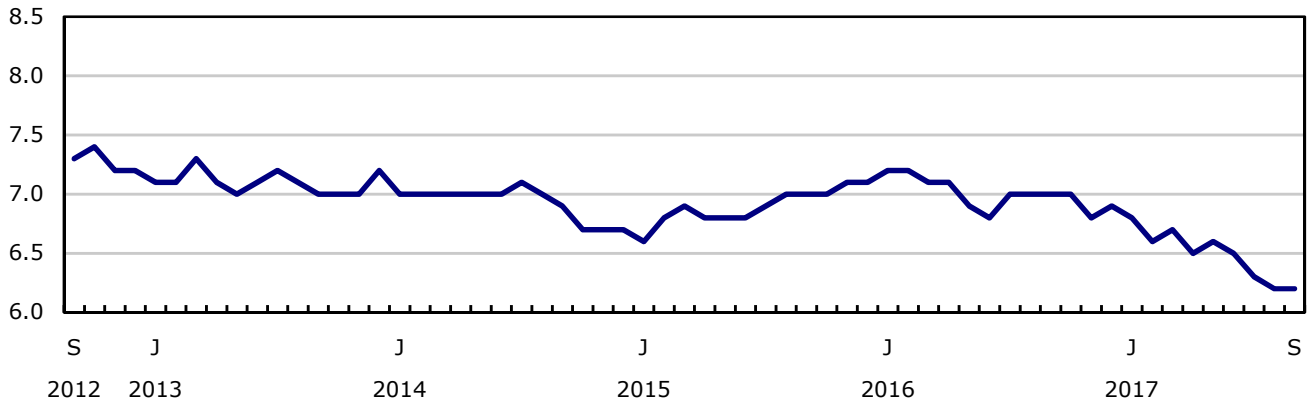
Employment

thousands



Unemployment rate

percent



The Daily release

Please note that the analytical text and charts previously found in this publication continue to be available in *The Daily* (www.statcan.gc.ca/daily-quotidien/171006/dq171006a-eng.htm).

Labour Market Indicators

www.statcan.gc.ca/pub/71-607-x/71-607-x2017001-eng.htm

Charts

Chart 1
Employment indexes, Canada, seasonally adjusted

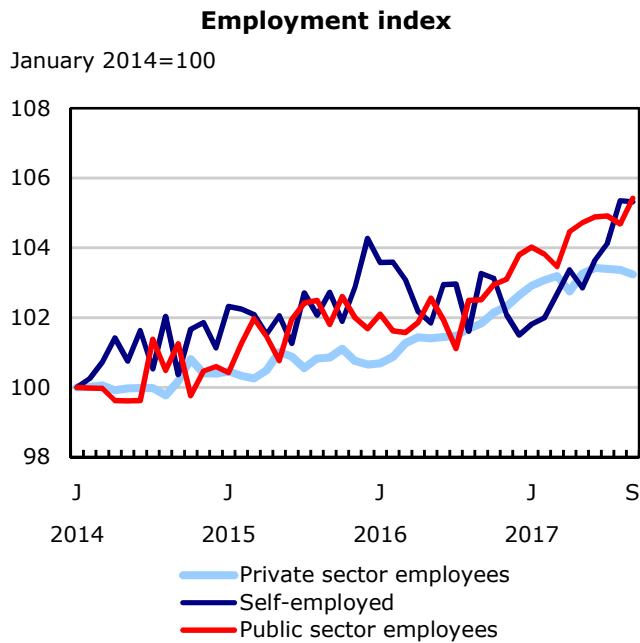
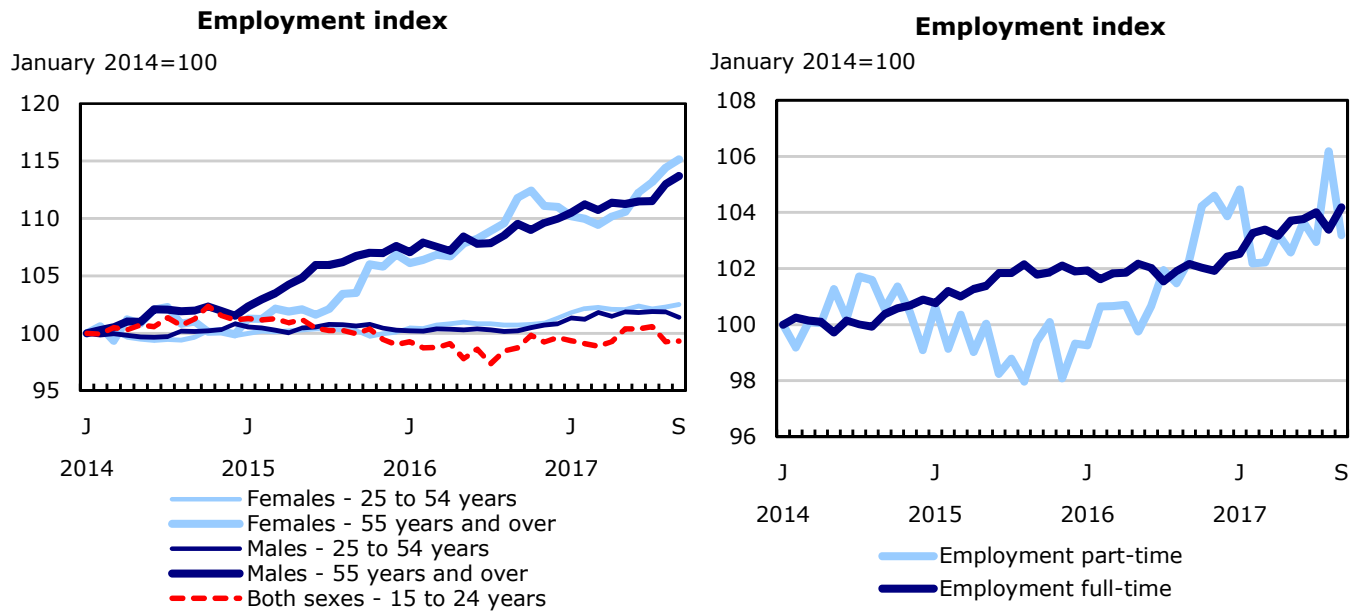


Chart 2
Unemployment, employment, and participation rates, Canada, seasonally adjusted

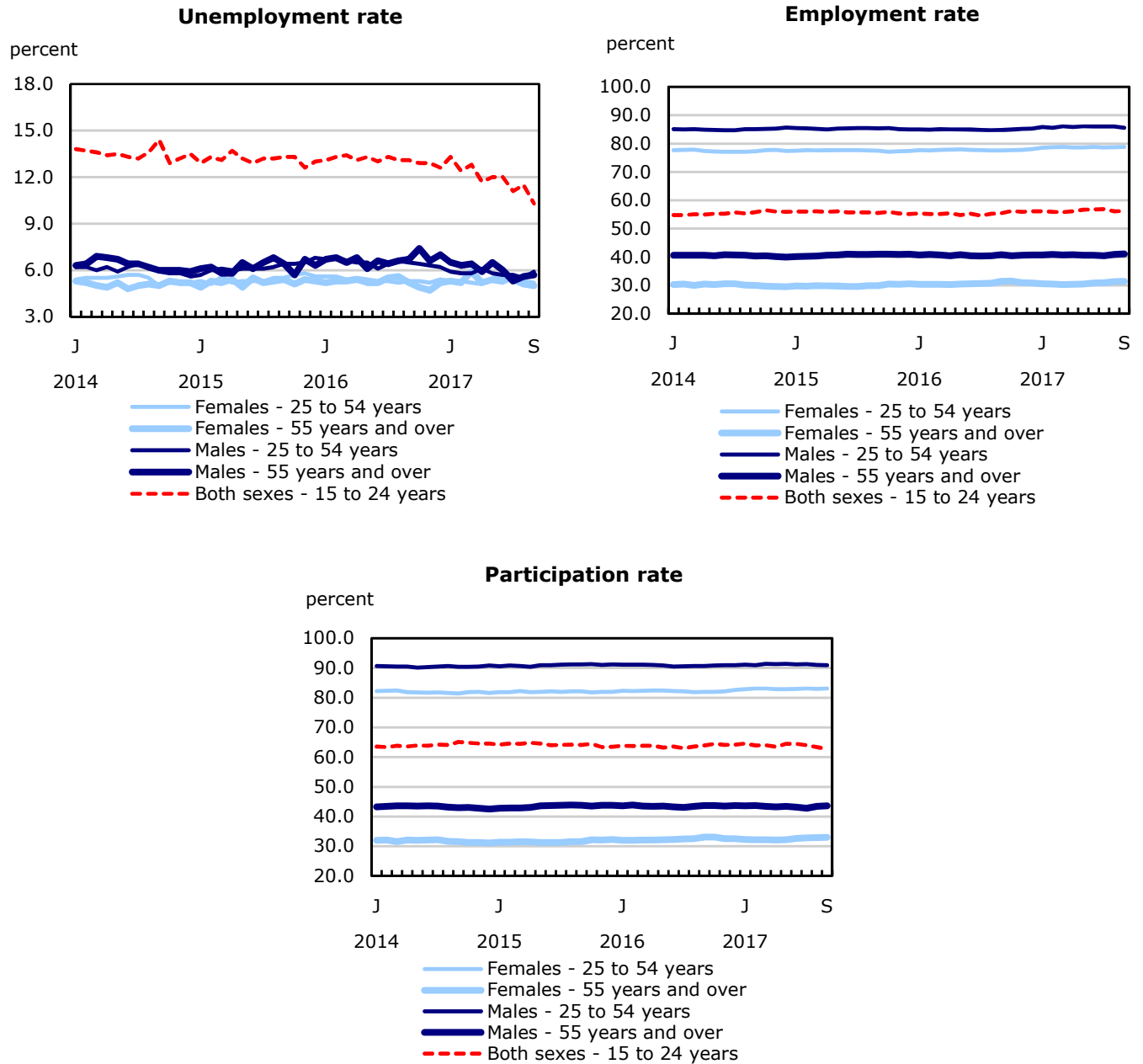


Chart 3
Employment indexes by industry, Canada, seasonally adjusted

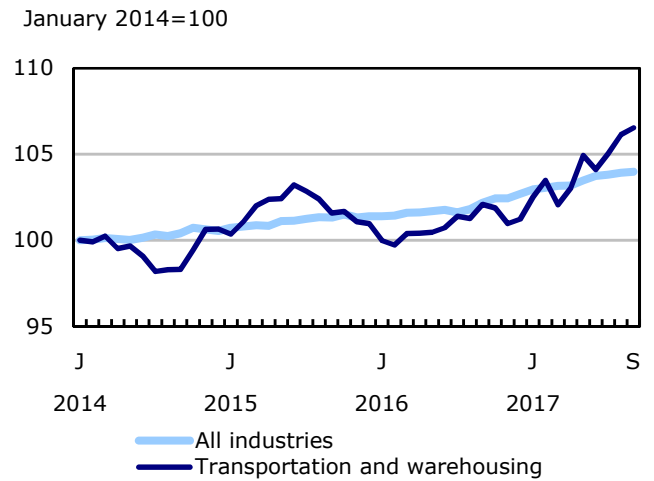
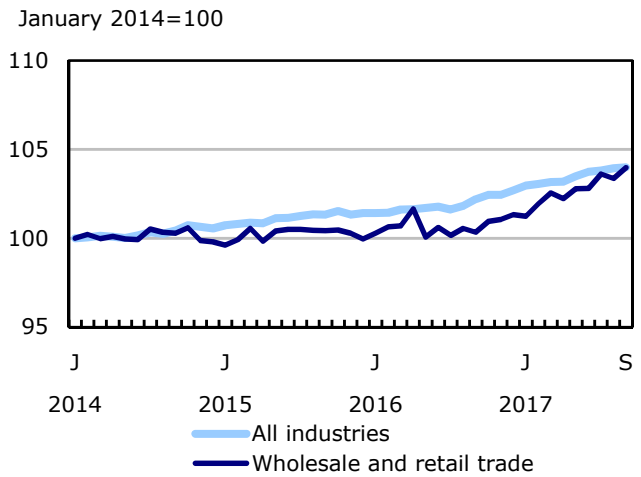
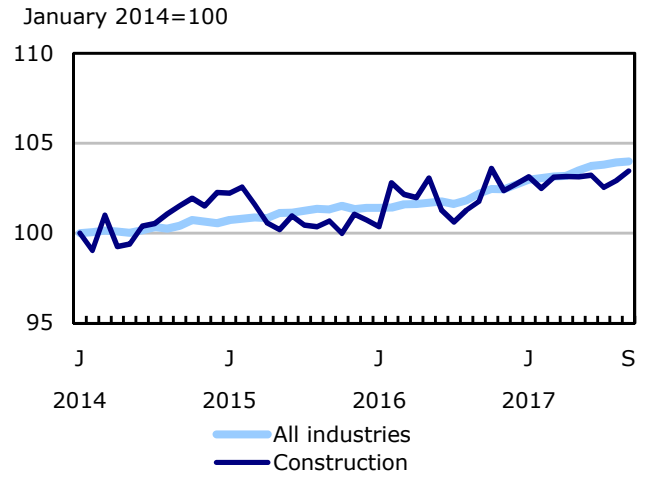
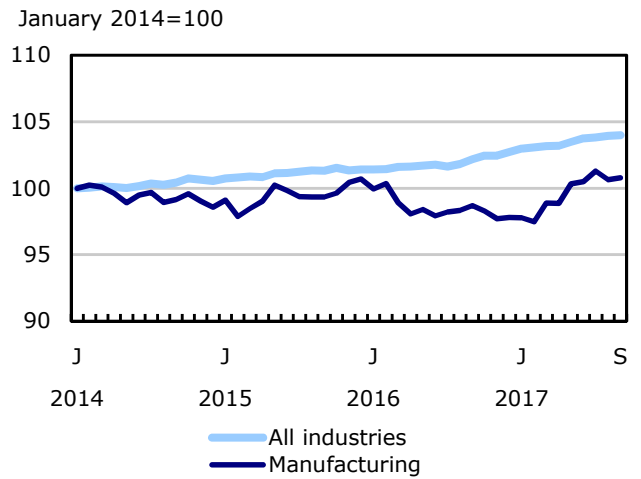
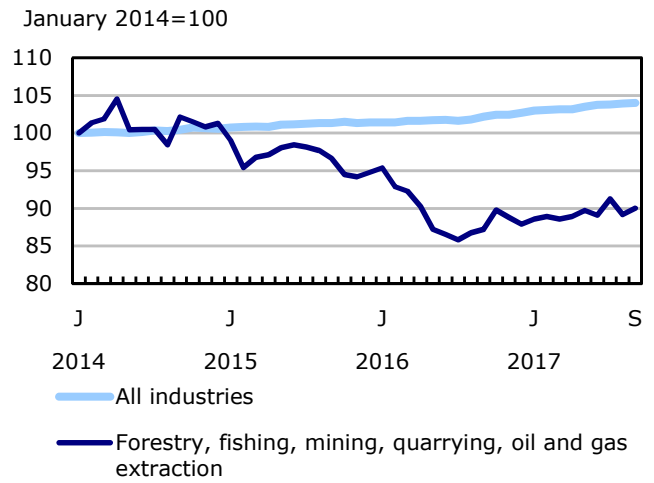
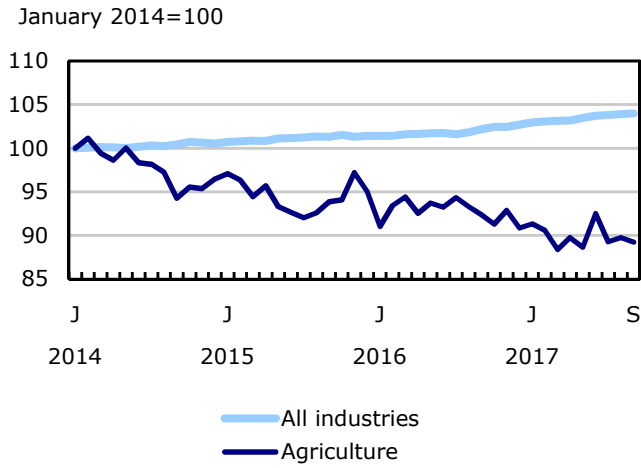


Chart 4
Employment indexes by industry, Canada, seasonally adjusted

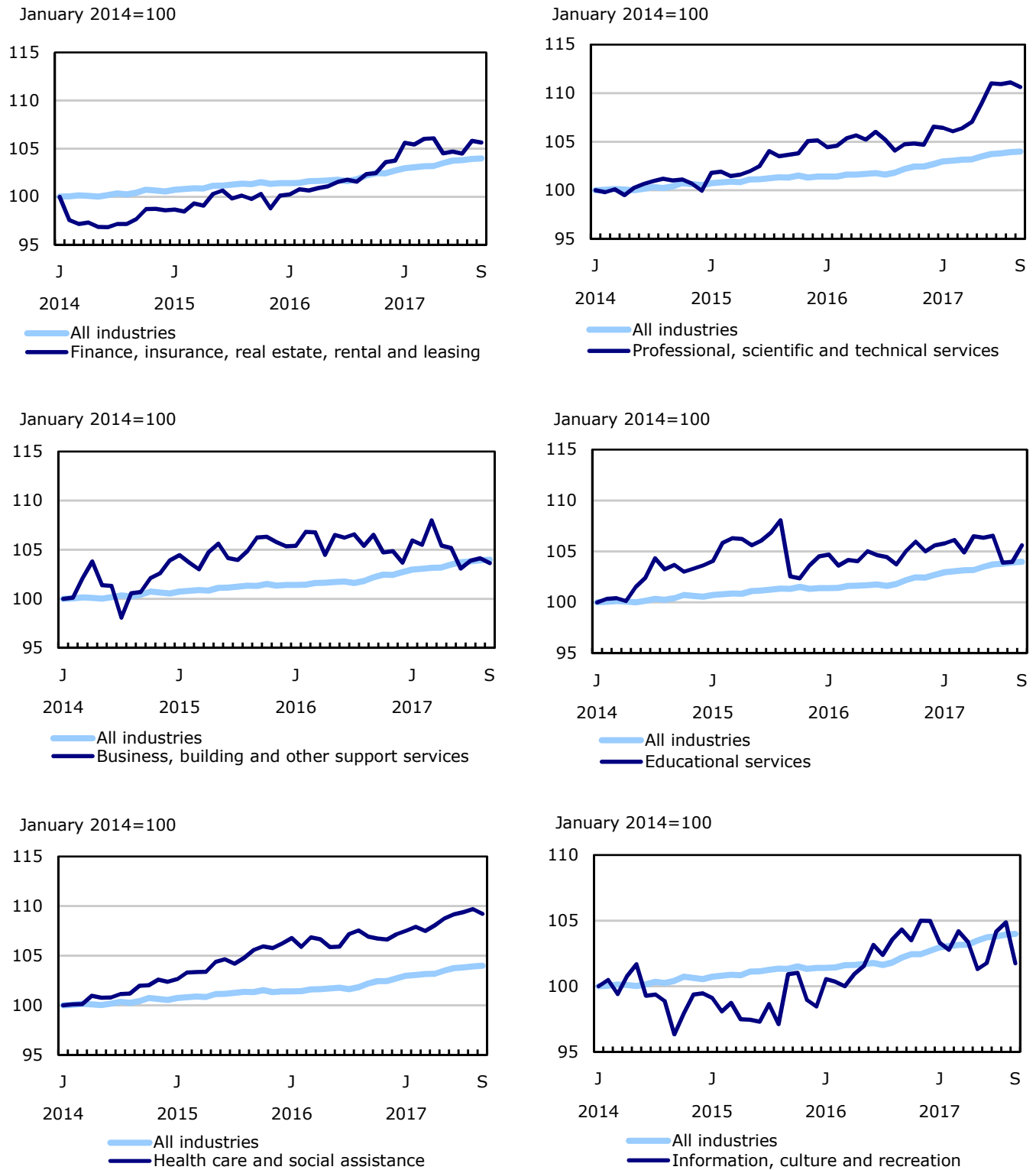


Chart 5
Employment indexes by industry, Canada, seasonally adjusted

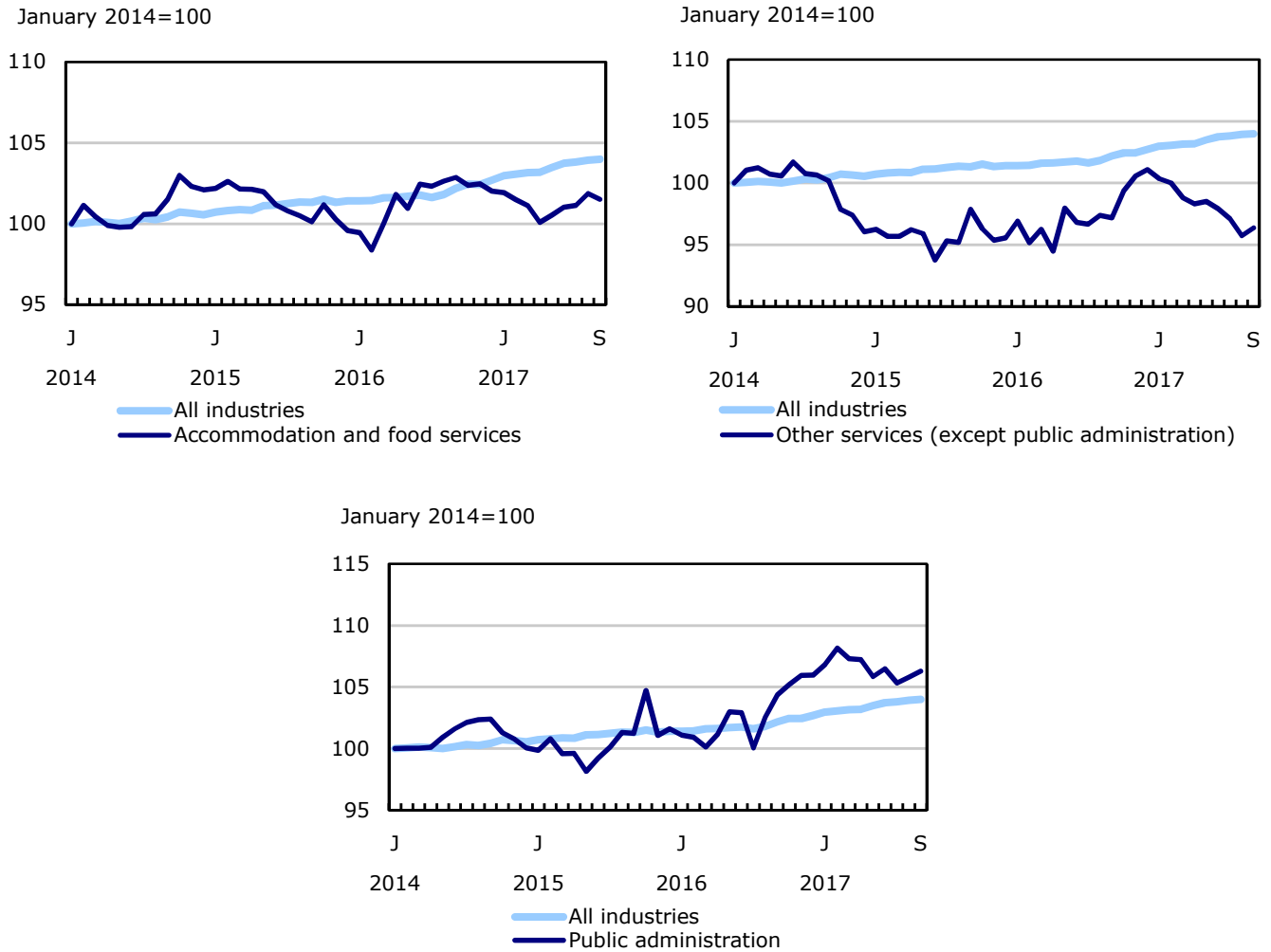


Chart 6
Employment indexes by province, Canada, seasonally adjusted

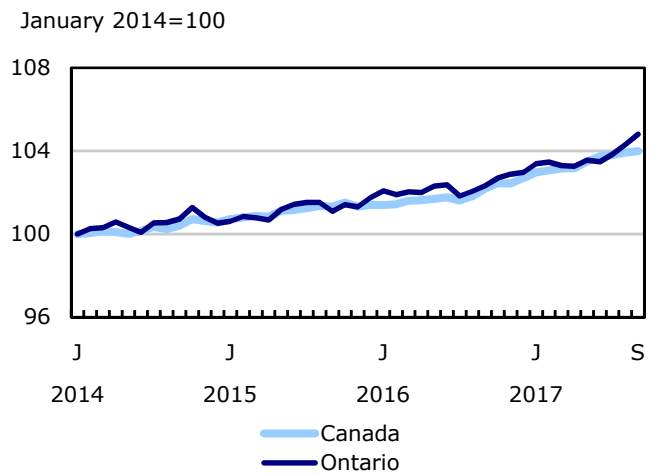
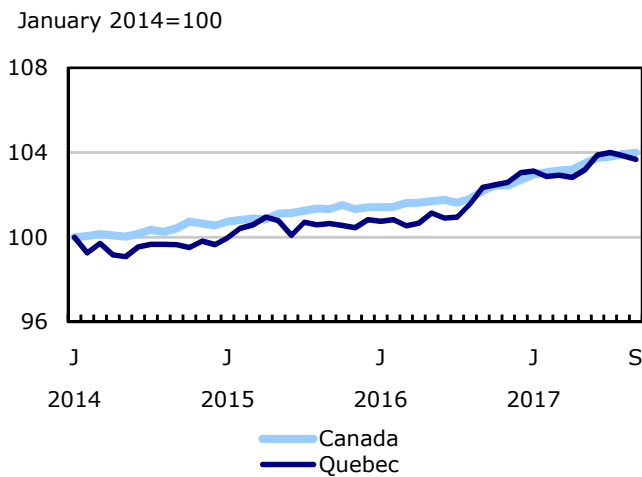
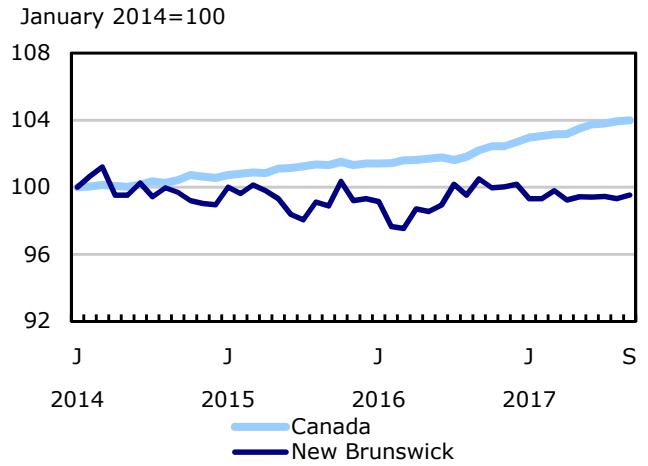
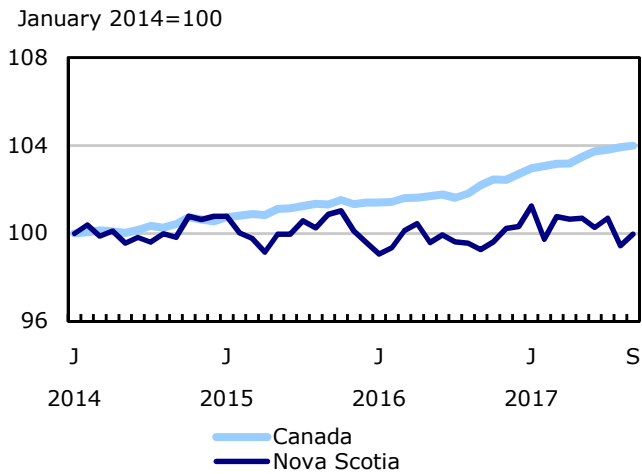
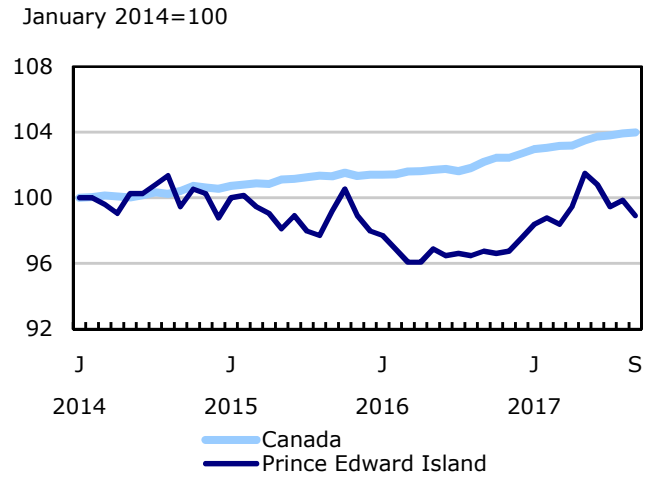
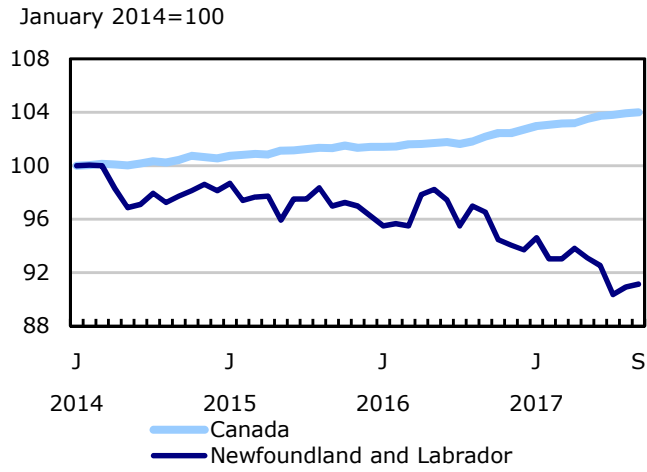


Chart 7
Employment indexes by province, Canada, seasonally adjusted

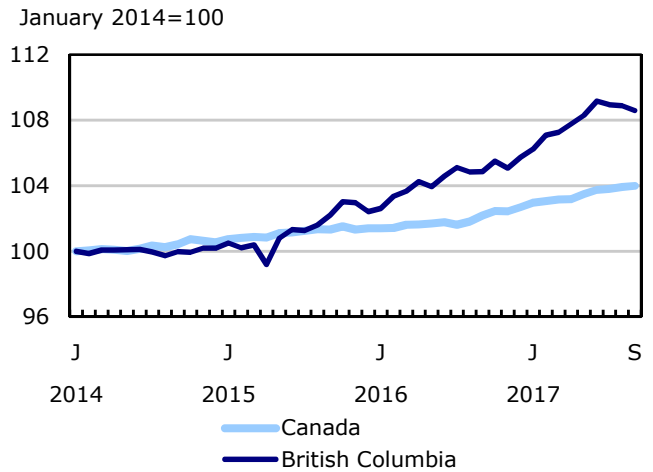
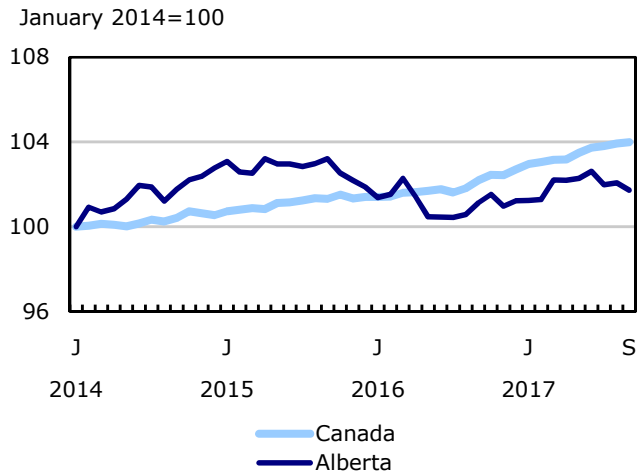
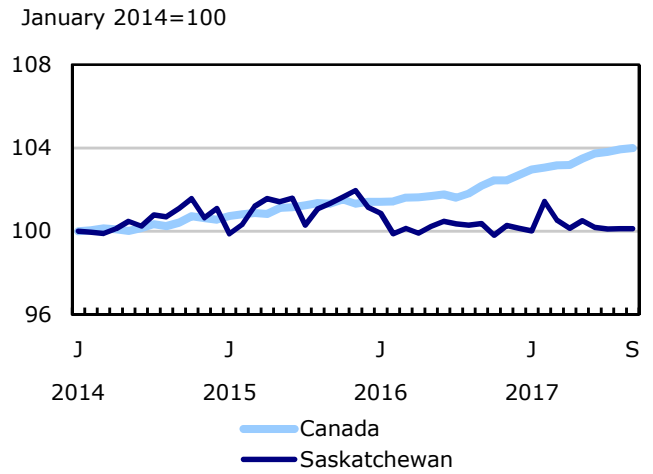
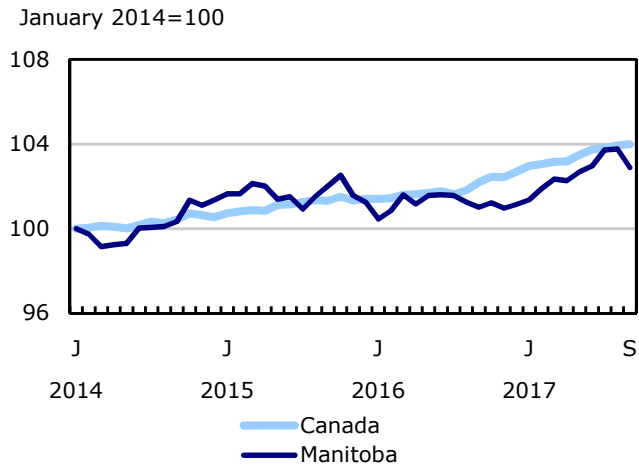
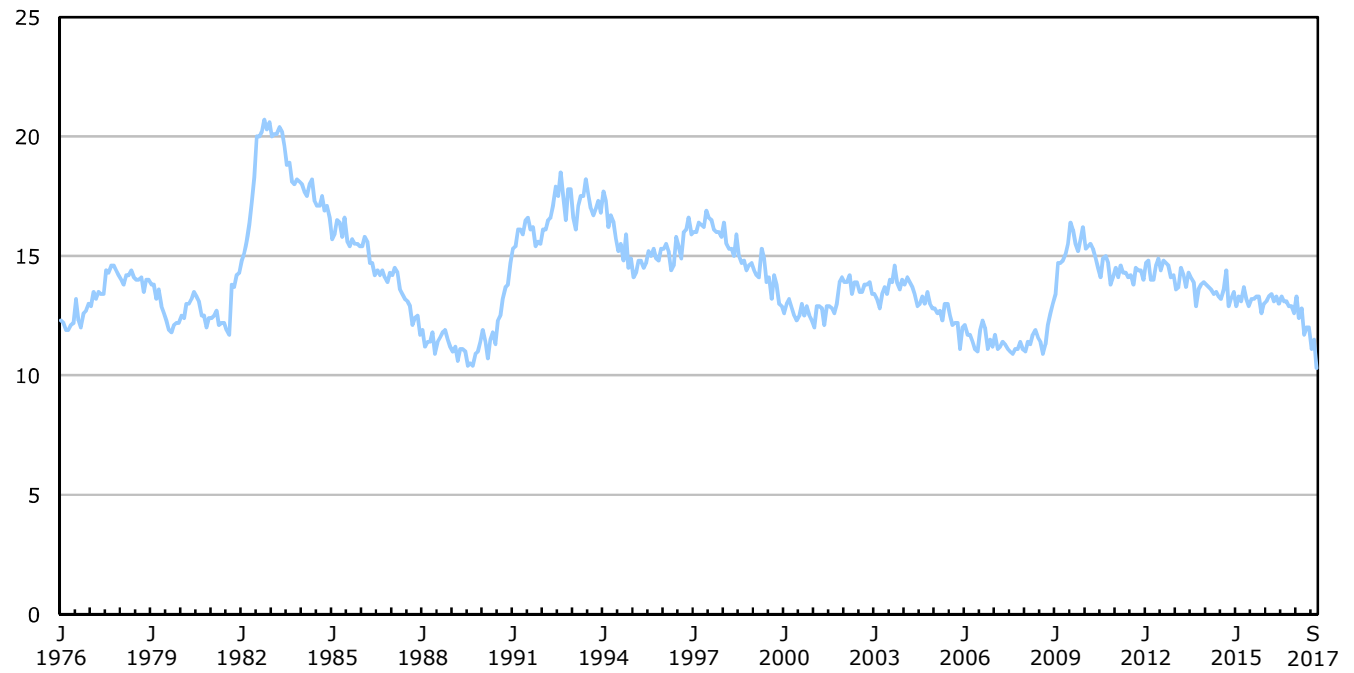


Chart 8
Unemployment rate of youth aged 15 to 24, Canada, January 1976 to September 2017

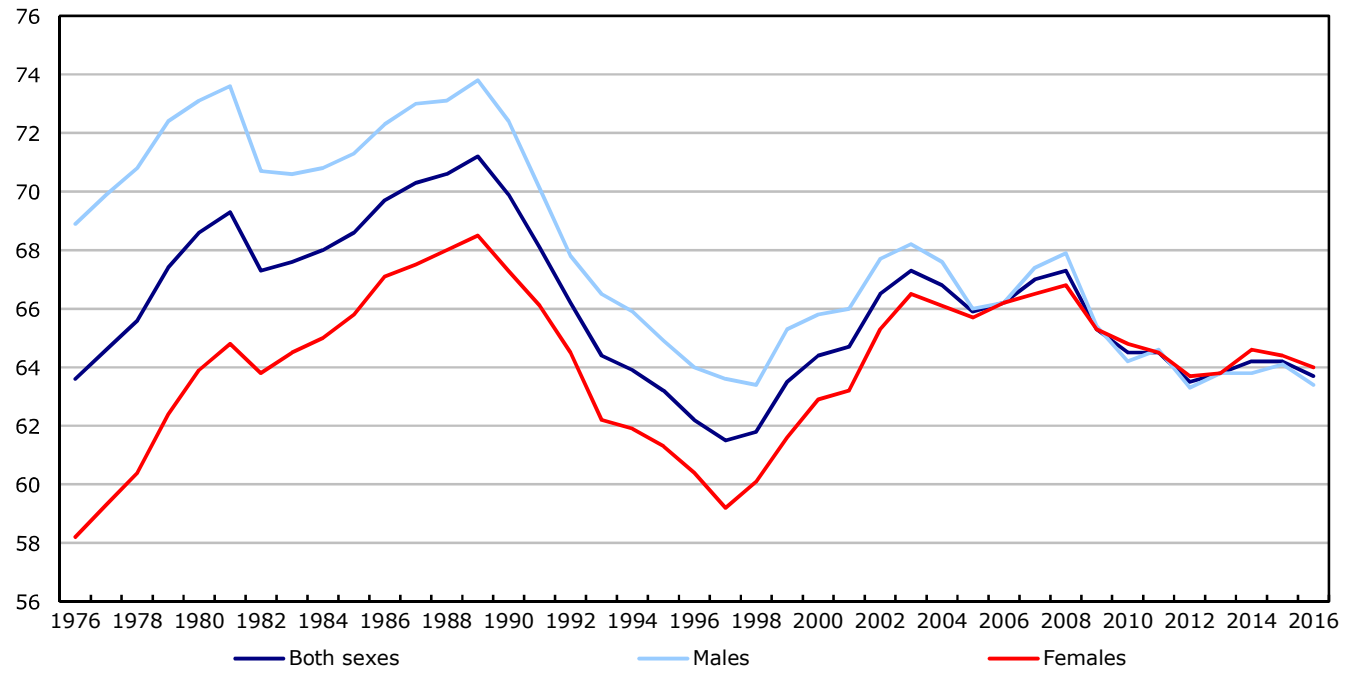
percent



Source: CANSIM table 282-0087.

Chart 9
Labour force participation rates of youth aged 15 to 24, Canada, 1976 to 2016

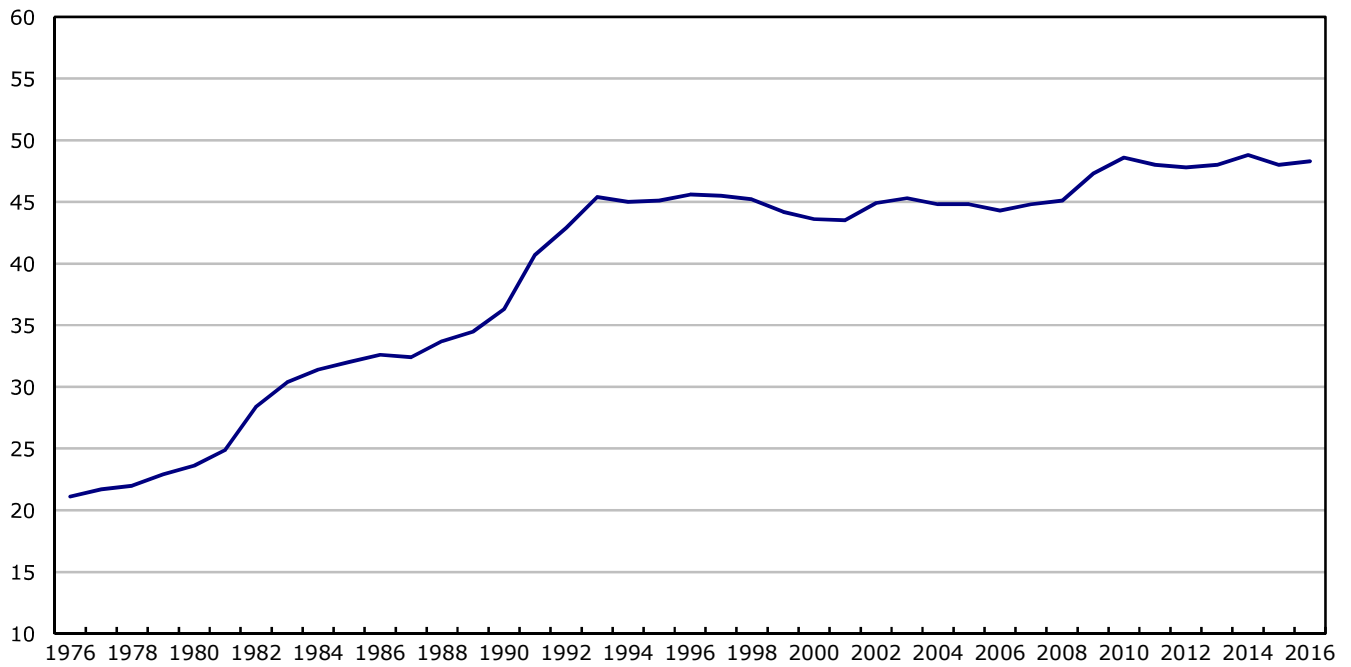
percent



Source: CANSIM table 282-0002.

Chart 10
Proportion of youth aged 15 to 24 working part-time, Canada, 1976 to 2016

percent



Source: CANSIM table 282-0002.

Statistical tables

Table 1
Labour force characteristics by age and sex, Canada, seasonally adjusted

	August 2017	September 2017	S.E. ¹	Change from			Percent change from		
				last month	last December	twelve months ago	last month	last December	twelve months ago
				in thousands (except rates)			percent		
15 years and over, both sexes									
Population	29,955.3	29,981.8	...	26.5	263.9	319.4	0.1	0.9	1.1
Labour force	19,670.7	19,668.1	29.4	-2.6	101.5	172.9	0.0	0.5	0.9
Employment	18,444.1	18,454.1	29.4	10.0	229.1	319.7	0.1	1.3	1.8
Employment full-time	14,818.0	14,930.0	40.6	112.0	252.2	288.6	0.8	1.7	2.0
Employment part-time	3,626.1	3,524.1	37.4	-102.0	-23.2	31.1	-2.8	-0.7	0.9
Unemployment	1,226.6	1,214.1	24.8	-12.5	-127.5	-146.7	-1.0	-9.5	-10.8
Participation rate	65.7	65.6	0.1	-0.1	-0.2	-0.1
Unemployment rate	6.2	6.2	0.1	0.0	-0.7	-0.8
Employment rate	61.6	61.6	0.1	0.0	0.3	0.5
Part-time rate	19.7	19.1	0.2	-0.6	-0.4	-0.2
15 to 24 years, both sexes									
Population	4,349.8	4,349.0	...	-0.8	-16.9	-28.0	0.0	-0.4	-0.6
Labour force	2,759.2	2,725.1	17.1	-34.1	-78.3	-71.0	-1.2	-2.8	-2.5
Employment	2,442.2	2,444.0	16.2	1.8	-7.4	14.4	0.1	-0.3	0.6
Employment full-time	1,215.4	1,251.9	19.3	36.5	3.7	-26.8	3.0	0.3	-2.1
Employment part-time	1,226.8	1,192.1	20.4	-34.7	-11.1	41.2	-2.8	-0.9	3.6
Unemployment	317.1	281.2	14.5	-35.9	-70.8	-85.4	-11.3	-20.1	-23.3
Participation rate	63.4	62.7	0.4	-0.7	-1.5	-1.2
Unemployment rate	11.5	10.3	0.5	-1.2	-2.3	-2.8
Employment rate	56.1	56.2	0.4	0.1	0.1	0.7
Part-time rate	50.2	48.8	0.7	-1.5	-0.3	1.4
25 years and over, men									
Population	12,526.4	12,540.0	...	13.6	138.8	171.4	0.1	1.1	1.4
Labour force	8,911.1	8,923.3	15.8	12.2	61.1	92.4	0.1	0.7	1.0
Employment	8,418.0	8,402.4	16.7	-15.6	105.3	150.8	-0.2	1.3	1.8
Employment full-time	7,691.6	7,716.4	22.7	24.8	148.6	190.9	0.3	2.0	2.5
Employment part-time	726.4	686.0	18.7	-40.4	-43.3	-40.1	-5.6	-5.9	-5.5
Unemployment	493.1	520.9	14.8	27.8	-44.2	-58.4	5.6	-7.8	-10.1
Participation rate	71.1	71.2	0.1	0.1	-0.3	-0.2
Unemployment rate	5.5	5.8	0.2	0.3	-0.6	-0.8
Employment rate	67.2	67.0	0.1	-0.2	0.1	0.3
Part-time rate	8.6	8.2	0.2	-0.5	-0.6	-0.6
25 years and over, women									
Population	13,079.0	13,092.8	...	13.8	142.0	176.0	0.1	1.1	1.4
Labour force	8,000.4	8,019.7	16.8	19.3	118.7	151.6	0.2	1.5	1.9
Employment	7,583.9	7,607.7	16.9	23.8	131.2	154.5	0.3	1.8	2.1
Employment full-time	5,911.0	5,961.7	26.5	50.7	100.0	124.5	0.9	1.7	2.1
Employment part-time	1,673.0	1,646.0	25.0	-27.0	31.2	30.0	-1.6	1.9	1.9
Unemployment	416.4	412.0	13.3	-4.4	-12.5	-2.9	-1.1	-2.9	-0.7
Participation rate	61.2	61.3	0.1	0.1	0.3	0.4
Unemployment rate	5.2	5.1	0.2	-0.1	-0.3	-0.2
Employment rate	58.0	58.1	0.1	0.1	0.4	0.4
Part-time rate	22.1	21.6	0.3	-0.4	0.0	0.0
25 to 54 years, both sexes									
Population	14,678.7	14,680.8	...	2.1	41.5	35.4	0.0	0.3	0.2
Labour force	12,768.2	12,772.2	22.2	4.0	71.3	134.5	0.0	0.6	1.1
Employment	12,079.7	12,063.3	24.0	-16.4	101.2	174.2	-0.1	0.8	1.5
Unemployment	688.5	709.0	18.4	20.5	-29.9	-39.6	3.0	-4.0	-5.3
Participation rate	87.0	87.0	0.2	0.0	0.2	0.7
Unemployment rate	5.4	5.6	0.1	0.2	-0.2	-0.3
Employment rate	82.3	82.2	0.2	-0.1	0.5	1.0

Table 1
Labour force characteristics by age and sex, Canada, seasonally adjusted

	August 2017	September 2017	S.E. ¹	Change from			Percent change from		
				last month	last December	twelve months ago	last month	last December	twelve months ago
in thousands (except rates)				percent					
25 to 54 years, men									
Population	7,306.8	7,307.9	...	1.1	20.6	17.3	0.0	0.3	0.2
Labour force	6,648.3	6,642.8	14.1	-5.5	16.5	32.8	-0.1	0.2	0.5
Employment	6,281.2	6,252.2	16.1	-29.0	34.4	72.1	-0.5	0.6	1.2
Unemployment	367.1	390.6	13.3	23.5	-17.9	-39.3	6.4	-4.4	-9.1
Participation rate	91.0	90.9	0.2	-0.1	0.0	0.2
Unemployment rate	5.5	5.9	0.2	0.4	-0.3	-0.6
Employment rate	86.0	85.6	0.2	-0.4	0.3	0.8
25 to 54 years, women									
Population	7,371.9	7,372.9	...	1.0	20.9	18.1	0.0	0.3	0.2
Labour force	6,119.9	6,129.4	16.6	9.5	54.7	101.7	0.2	0.9	1.7
Employment	5,798.6	5,811.1	16.9	12.5	66.8	102.1	0.2	1.2	1.8
Unemployment	321.4	318.3	12.3	-3.1	-12.1	-0.4	-1.0	-3.7	-0.1
Participation rate	83.0	83.1	0.2	0.1	0.5	1.1
Unemployment rate	5.3	5.2	0.2	-0.1	-0.2	-0.1
Employment rate	78.7	78.8	0.2	0.1	0.7	1.2
55 years and over, both sexes									
Population	10,926.8	10,952.0	...	25.2	239.3	311.9	0.2	2.2	2.9
Labour force	4,143.2	4,170.8	19.0	27.6	108.5	109.5	0.7	2.7	2.7
Employment	3,922.2	3,946.9	19.0	24.7	135.3	131.2	0.6	3.5	3.4
Unemployment	221.0	223.9	10.2	2.9	-26.8	-21.7	1.3	-10.7	-8.8
Participation rate	37.9	38.1	0.2	0.2	0.2	-0.1
Unemployment rate	5.3	5.4	0.2	0.1	-0.8	-0.6
Employment rate	35.9	36.0	0.2	0.1	0.4	0.1
55 years and over, men									
Population	5,219.6	5,232.1	...	12.5	118.2	154.1	0.2	2.3	3.0
Labour force	2,262.8	2,280.4	12.5	17.6	44.4	59.5	0.8	2.0	2.7
Employment	2,136.8	2,150.2	12.7	13.4	70.8	78.7	0.6	3.4	3.8
Unemployment	126.0	130.3	7.7	4.3	-26.3	-19.1	3.4	-16.8	-12.8
Participation rate	43.4	43.6	0.2	0.2	-0.1	-0.1
Unemployment rate	5.6	5.7	0.3	0.1	-1.3	-1.0
Employment rate	40.9	41.1	0.2	0.2	0.4	0.3
55 years and over, women									
Population	5,707.2	5,719.9	...	12.7	121.0	157.9	0.2	2.2	2.8
Labour force	1,880.4	1,890.3	13.1	9.9	63.9	49.9	0.5	3.5	2.7
Employment	1,785.4	1,796.7	13.1	11.3	64.5	52.5	0.6	3.7	3.0
Unemployment	95.1	93.7	6.5	-1.4	-0.4	-2.5	-1.5	-0.4	-2.6
Participation rate	32.9	33.0	0.2	0.1	0.4	-0.1
Unemployment rate	5.1	5.0	0.4	-0.1	-0.2	-0.2
Employment rate	31.3	31.4	0.2	0.1	0.5	0.0

1. Average standard error of change in two consecutive months (see "Sampling Errors" in the Data Quality section for further explanations).

Note: Related CANSIM table 282-0087. The sum of individual categories may not always add to the total due to rounding.

Table 2
Employment by class of worker and industry, Canada, seasonally adjusted

	August 2017	September 2017	S.E. ¹	Change from			Percent change from		
				last month	last December	twelve months ago	last month	last December	twelve months ago
	in thousands			percent					
Class of worker									
Employees	15,602.4	15,613.2	35.7	10.8	126.1	264.7	0.1	0.8	1.7
Self-employed ²	2,841.7	2,840.9	25.2	-0.8	102.9	55.1	0.0	3.8	2.0
Public/private sector employees									
Public sector employees	3,704.3	3,730.5	20.1	26.2	57.3	102.7	0.7	1.6	2.8
Private sector employees	11,898.1	11,882.6	35.9	-15.5	68.7	161.8	-0.1	0.6	1.4
Industry	18,444.1	18,454.1	29.4	10.0	229.1	319.7	0.1	1.3	1.8
Goods-producing sector	3,870.2	3,880.7	16.1	10.5	54.8	53.9	0.3	1.4	1.4
Agriculture	280.0	278.3	5.3	-1.7	-5.1	-9.8	-0.6	-1.8	-3.4
Forestry, fishing, mining, quarrying, oil and gas extraction ³	327.4	330.5	4.8	3.1	7.8	10.3	0.9	2.4	3.2
Utilities	132.1	131.6	2.3	-0.5	-8.7	-5.5	-0.4	-6.2	-4.0
Construction	1,399.3	1,406.7	11.0	7.4	9.8	23.0	0.5	0.7	1.7
Manufacturing	1,731.4	1,733.7	10.5	2.3	51.1	35.9	0.1	3.0	2.1
Services-producing sector	14,573.9	14,573.4	27.9	-0.5	174.2	265.9	0.0	1.2	1.9
Wholesale and retail trade	2,817.7	2,834.3	14.5	16.6	72.0	99.3	0.6	2.6	3.6
Transportation and warehousing	955.6	959.2	8.4	3.6	47.7	40.1	0.4	5.2	4.4
Finance, insurance, real estate, rental and leasing	1,172.4	1,170.2	8.7	-2.2	20.8	36.3	-0.2	1.8	3.2
Professional, scientific and technical services	1,473.7	1,467.4	10.8	-6.3	54.1	78.3	-0.4	3.8	5.6
Business, building and other support services	755.1	751.5	10.4	-3.6	-0.4	-20.9	-0.5	-0.1	-2.7
Educational services	1,260.7	1,280.7	10.7	20.0	0.0	6.9	1.6	0.0	0.5
Health care and social assistance	2,406.3	2,395.9	10.9	-10.4	45.0	50.3	-0.4	1.9	2.1
Information, culture and recreation	799.2	775.5	10.3	-23.7	-24.5	-19.5	-3.0	-3.1	-2.5
Accommodation and food services	1,217.8	1,213.6	11.3	-4.2	-5.9	-16.1	-0.3	-0.5	-1.3
Other services (except public administration)	761.5	766.6	8.4	5.1	-37.5	-6.4	0.7	-4.7	-0.8
Public administration	954.0	958.5	7.1	4.5	2.8	17.4	0.5	0.3	1.8

1. Average standard error of change in two consecutive months (see "Sampling Errors" in the **Data Quality** section for further explanations).

2. Includes both incorporated and unincorporated working owners, self-employed persons who do not have a business and persons working in a family business without pay.

3. Also referred to as "Natural resources".

Note: Related CANSIM tables 282-0088 and 282-0089. The sum of individual categories may not always add to the total due to rounding.

Table 3
Labour force characteristics by province, seasonally adjusted

	August 2017	September 2017	S.E. ¹	Change from			Percent change from		
				last month	last December	twelve months ago	last month	last December	twelve months ago
in thousands (except rates)				percent					
Newfoundland and Labrador									
Population	445.8	445.5	...	-0.3	0.5	0.7	-0.1	0.1	0.2
Labour force	258.5	260.2	2.1	1.7	-7.4	-11.2	0.7	-2.8	-4.1
Employment	220.4	220.9	2.1	0.5	-6.2	-13.1	0.2	-2.7	-5.6
Employment full-time	189.9	189.6	2.6	-0.3	0.7	-4.0	-0.2	0.4	-2.1
Employment part-time	30.5	31.3	2.1	0.8	-6.9	-9.2	2.6	-18.1	-22.7
Unemployment	38.1	39.3	2.0	1.2	-1.2	1.9	3.1	-3.0	5.1
Participation rate	58.0	58.4	0.5	0.4	-1.7	-2.6
Unemployment rate	14.7	15.1	0.7	0.4	0.0	1.3
Employment rate	49.4	49.6	0.5	0.2	-1.4	-3.0
Prince Edward Island									
Population	124.1	124.2	...	0.1	1.8	2.0	0.1	1.5	1.6
Labour force	80.9	80.8	0.6	-0.1	0.2	0.6	-0.1	0.2	0.7
Employment	73.8	73.1	0.6	-0.7	1.0	1.6	-0.9	1.4	2.2
Employment full-time	60.7	60.3	0.8	-0.4	1.3	1.9	-0.7	2.2	3.3
Employment part-time	13.1	12.8	0.7	-0.3	-0.3	-0.3	-2.3	-2.3	-2.3
Unemployment	7.1	7.7	0.6	0.6	-0.8	-0.9	8.5	-9.4	-10.5
Participation rate	65.2	65.1	0.5	-0.1	-0.7	-0.5
Unemployment rate	8.8	9.5	0.7	0.7	-1.0	-1.2
Employment rate	59.5	58.9	0.5	-0.6	0.0	0.4
Nova Scotia									
Population	793.3	793.7	...	0.4	3.7	4.2	0.1	0.5	0.5
Labour force	487.8	491.2	2.5	3.4	2.3	8.3	0.7	0.5	1.7
Employment	444.6	446.9	2.7	2.3	-1.6	3.1	0.5	-0.4	0.7
Employment full-time	356.6	361.4	3.5	4.8	6.3	-1.5	1.3	1.8	-0.4
Employment part-time	88.0	85.5	3.3	-2.5	-7.9	4.6	-2.8	-8.5	5.7
Unemployment	43.2	44.3	2.3	1.1	3.9	5.3	2.5	9.7	13.6
Participation rate	61.5	61.9	0.3	0.4	0.0	0.7
Unemployment rate	8.9	9.0	0.5	0.1	0.7	0.9
Employment rate	56.0	56.3	0.3	0.3	-0.5	0.1
New Brunswick									
Population	625.0	625.2	...	0.2	1.3	1.5	0.0	0.2	0.2
Labour force	381.6	382.3	2.2	0.7	-9.2	-9.9	0.2	-2.3	-2.5
Employment	351.9	352.6	2.2	0.7	-2.3	-3.5	0.2	-0.6	-1.0
Employment full-time	298.9	301.5	2.8	2.6	2.5	3.1	0.9	0.8	1.0
Employment part-time	53.0	51.2	2.3	-1.8	-4.8	-6.5	-3.4	-8.6	-11.3
Unemployment	29.7	29.7	2.0	0.0	-6.9	-6.4	0.0	-18.9	-17.7
Participation rate	61.1	61.1	0.4	0.0	-1.7	-1.8
Unemployment rate	7.8	7.8	0.5	0.0	-1.5	-1.4
Employment rate	56.3	56.4	0.3	0.1	-0.5	-0.7
Quebec									
Population	6,940.7	6,944.0	...	3.3	38.1	43.9	0.0	0.6	0.6
Labour force	4,504.9	4,492.5	14.9	-12.4	-0.8	14.3	-0.3	0.0	0.3
Employment	4,232.0	4,224.4	15.3	-7.6	25.2	53.5	-0.2	0.6	1.3
Employment full-time	3,392.8	3,410.1	21.0	17.3	14.0	35.6	0.5	0.4	1.1
Employment part-time	839.2	814.3	19.4	-24.9	11.2	17.9	-3.0	1.4	2.2
Unemployment	272.9	268.1	12.8	-4.8	-26.0	-39.2	-1.8	-8.8	-12.8
Participation rate	64.9	64.7	0.2	-0.2	-0.4	-0.2
Unemployment rate	6.1	6.0	0.3	-0.1	-0.5	-0.9
Employment rate	61.0	60.8	0.2	-0.2	0.0	0.4
Ontario									
Population	11,709.8	11,725.2	...	15.4	133.8	167.3	0.1	1.2	1.4
Labour force	7,565.7	7,601.0	20.4	35.3	75.4	108.5	0.5	1.0	1.4
Employment	7,137.4	7,172.1	19.5	34.7	125.7	169.5	0.5	1.8	2.4
Employment full-time	5,736.2	5,814.0	26.7	77.8	123.9	137.1	1.4	2.2	2.4
Employment part-time	1,401.3	1,358.0	25.1	-43.3	1.7	32.3	-3.1	0.1	2.4
Unemployment	428.3	428.9	16.4	0.6	-50.3	-61.0	0.1	-10.5	-12.5
Participation rate	64.6	64.8	0.2	0.2	-0.1	0.0
Unemployment rate	5.7	5.6	0.2	-0.1	-0.8	-0.9
Employment rate	61.0	61.2	0.2	0.2	0.4	0.6

Table 3
Labour force characteristics by province, seasonally adjusted

	August 2017	September 2017	S.E. ¹	Change from			Percent change from		
				last month	last December	twelve months ago	last month	last December	twelve months ago
in thousands (except rates)				percent					
Manitoba									
Population	1,015.9	1,016.7	...	0.8	12.3	14.5	0.1	1.2	1.4
Labour force	683.2	681.7	2.6	-1.5	6.4	6.6	-0.2	0.9	1.0
Employment	649.4	643.9	2.6	-5.5	10.9	11.7	-0.8	1.7	1.9
Employment full-time	520.5	520.2	3.6	-0.3	10.8	12.9	-0.1	2.1	2.5
Employment part-time	128.9	123.7	3.3	-5.2	0.1	-1.2	-4.0	0.1	-1.0
Unemployment	33.7	37.8	2.0	4.1	-4.5	-5.1	12.2	-10.6	-11.9
Participation rate	67.3	67.1	0.3	-0.2	-0.1	-0.3
Unemployment rate	4.9	5.5	0.3	0.6	-0.8	-0.9
Employment rate	63.9	63.3	0.3	-0.6	0.3	0.2
Saskatchewan									
Population	878.0	878.8	...	0.8	6.3	7.8	0.1	0.7	0.9
Labour force	607.0	605.7	2.5	-1.3	-2.4	-5.9	-0.2	-0.4	-1.0
Employment	568.1	568.1	2.5	0.0	-0.1	-1.4	0.0	0.0	-0.2
Employment full-time	464.8	468.1	3.5	3.3	1.5	1.5	0.7	0.3	0.3
Employment part-time	103.3	100.1	3.2	-3.2	-1.5	-2.9	-3.1	-1.5	-2.8
Unemployment	39.0	37.6	2.1	-1.4	-2.3	-4.4	-3.6	-5.8	-10.5
Participation rate	69.1	68.9	0.3	-0.2	-0.8	-1.3
Unemployment rate	6.4	6.2	0.3	-0.2	-0.4	-0.7
Employment rate	64.7	64.6	0.3	-0.1	-0.5	-0.8
Alberta									
Population	3,434.5	3,436.7	...	2.2	27.1	29.5	0.1	0.8	0.9
Labour force	2,488.9	2,473.1	9.3	-15.8	-6.1	-7.5	-0.6	-0.2	-0.3
Employment	2,286.5	2,278.7	10.2	-7.8	11.3	13.3	-0.3	0.5	0.6
Employment full-time	1,867.6	1,869.9	13.6	2.3	23.8	31.5	0.1	1.3	1.7
Employment part-time	418.8	408.9	12.4	-9.9	-12.3	-18.1	-2.4	-2.9	-4.2
Unemployment	202.4	194.4	9.0	-8.0	-17.5	-20.8	-4.0	-8.3	-9.7
Participation rate	72.5	72.0	0.3	-0.5	-0.7	-0.8
Unemployment rate	8.1	7.9	0.4	-0.2	-0.6	-0.8
Employment rate	66.6	66.3	0.3	-0.3	-0.2	-0.2
British Columbia									
Population	3,988.1	3,991.7	...	3.6	38.9	47.8	0.1	1.0	1.2
Labour force	2,612.1	2,599.7	10.6	-12.4	43.3	69.1	-0.5	1.7	2.7
Employment	2,480.0	2,473.3	10.6	-6.7	65.1	85.1	-0.3	2.7	3.6
Employment full-time	1,930.0	1,935.0	15.0	5.0	67.6	70.5	0.3	3.6	3.8
Employment part-time	550.0	538.4	14.1	-11.6	-2.4	14.6	-2.1	-0.4	2.8
Unemployment	132.1	126.3	8.6	-5.8	-21.9	-16.1	-4.4	-14.8	-11.3
Participation rate	65.5	65.1	0.3	-0.4	0.4	0.9
Unemployment rate	5.1	4.9	0.3	-0.2	-0.9	-0.7
Employment rate	62.2	62.0	0.3	-0.2	1.1	1.4

1. Average standard error of change in two consecutive months (see "Sampling Errors" in the **Data Quality** section for further explanations).

Note: Related CANSIM table 282-0087. The sum of individual categories may not always add to the total due to rounding.

Table 4-1
Selected labour force characteristics (seasonally adjusted) — Newfoundland and Labrador

	August 2017	September 2017	S.E. ¹	Change from			Percent change from		
				last month	last December	twelve months ago	last month	last December	twelve months ago
				in thousands (except rates)			percent		
Both sexes, 15 years and over									
Population	445.8	445.5	...	-0.3	0.5	0.7	-0.1	0.1	0.2
Labour force	258.5	260.2	2.1	1.7	-7.4	-11.2	0.7	-2.8	-4.1
Employment	220.4	220.9	2.1	0.5	-6.2	-13.1	0.2	-2.7	-5.6
Employment full-time	189.9	189.6	2.6	-0.3	0.7	-4.0	-0.2	0.4	-2.1
Unemployment	38.1	39.3	2.0	1.2	-1.2	1.9	3.1	-3.0	5.1
Participation rate	58.0	58.4	0.5	0.4	-1.7	-2.6
Unemployment rate	14.7	15.1	0.7	0.4	0.0	1.3
Employment rate	49.4	49.6	0.5	0.2	-1.4	-3.0
Part-time rate	13.8	14.2	0.9	0.3	-2.7	-3.1
Both sexes, 15 to 24 years									
Population	54.6	54.6	...	0.0	-0.4	-0.6	0.0	-0.7	-1.1
Labour force	32.6	33.9	1.0	1.3	-3.1	-3.1	4.0	-8.4	-8.4
Employment	27.2	28.3	0.9	1.1	-0.4	-0.4	4.0	-1.4	-1.4
Unemployment	5.3	5.6	0.9	0.3	-2.7	-2.8	5.7	-32.5	-33.3
Participation rate	59.7	62.1	1.8	2.4	-5.2	-4.9
Unemployment rate	16.3	16.5	2.3	0.2	-5.9	-6.2
Employment rate	49.8	51.8	1.7	2.0	-0.4	-0.2
Part-time rate	44.9	44.9	3.6	0.0	-4.3	0.3
Men, 25 years and over									
Population	190.6	190.4	...	-0.2	0.4	0.5	-0.1	0.2	0.3
Labour force	117.0	116.4	1.3	-0.6	-3.0	-6.6	-0.5	-2.5	-5.4
Employment	96.5	94.8	1.4	-1.7	-4.0	-9.5	-1.8	-4.0	-9.1
Unemployment	20.5	21.6	1.4	1.1	1.0	3.0	5.4	4.9	16.1
Participation rate	61.4	61.1	0.7	-0.3	-1.7	-3.7
Unemployment rate	17.5	18.6	1.1	1.1	1.3	3.5
Employment rate	50.6	49.8	0.7	-0.8	-2.2	-5.1
Part-time rate	5.3	4.5	1.0	-0.7	-2.1	-3.1
Women, 25 years and over									
Population	200.6	200.5	...	-0.1	0.6	0.8	0.0	0.3	0.4
Labour force	109.0	109.9	1.1	0.9	-1.3	-1.5	0.8	-1.2	-1.3
Employment	96.7	97.9	1.1	1.2	-1.7	-3.2	1.2	-1.7	-3.2
Unemployment	12.3	12.0	1.0	-0.3	0.4	1.7	-2.4	3.4	16.5
Participation rate	54.3	54.8	0.6	0.5	-0.8	-1.0
Unemployment rate	11.3	10.9	0.9	-0.4	0.5	1.7
Employment rate	48.2	48.8	0.6	0.6	-1.0	-1.8
Part-time rate	13.7	14.6	1.3	1.0	-3.1	-4.9
Industry									
Goods-producing sector	220.4	220.9	2.1	0.5	-6.2	-13.1	0.2	-2.7	-5.6
Agriculture	46.2	47.3	1.4	1.1	0.8	-3.8	2.4	1.7	-7.4
Forestry, fishing, mining, quarrying, oil and gas extraction ²	1.8	1.7	0.4	-0.1	0.6	0.3	-5.6	54.5	21.4
Utilities	11.5	12.2	0.7	0.7	-0.2	-2.1	6.1	-1.6	-14.7
Construction	2.9	3.4	0.2	0.5	0.7	0.3	17.2	25.9	9.7
Manufacturing	21.4	20.0	1.0	-1.4	-1.2	-2.6	-6.5	-5.7	-11.5
Services-producing sector	8.6	10.1	0.7	1.5	1.1	0.5	17.4	12.2	5.2
Wholesale and retail trade	174.2	173.6	1.7	-0.6	-7.0	-9.4	-0.3	-3.9	-5.1
Transportation and warehousing	40.9	40.2	1.0	-0.7	-1.1	-3.0	-1.7	-2.7	-6.9
Finance, insurance, real estate, rental and leasing	11.8	10.7	0.5	-1.1	0.7	0.9	-9.3	7.0	9.2
Professional, scientific and technical services	5.7	6.0	0.4	0.3	-1.6	-1.5	5.3	-21.1	-20.0
Business, building and other support services	9.4	9.1	0.4	-0.3	-1.8	-1.2	-3.2	-16.5	-11.7
Educational services	7.6	6.4	0.4	-1.2	-0.1	0.3	-15.8	-1.5	4.9
Health care and social assistance	15.8	16.0	0.6	0.2	0.9	1.8	1.3	6.0	12.7
Information, culture and recreation	38.8	38.3	0.7	-0.5	-1.5	-1.6	-1.3	-3.8	-4.0
Accommodation and food services	6.0	6.1	0.5	0.1	-1.3	-0.7	1.7	-17.6	-10.3
Other services (except public administration)	14.4	15.6	0.7	1.2	0.7	-0.8	8.3	4.7	-4.9
Public administration	9.9	11.1	0.6	1.2	-0.6	-1.8	12.1	-5.1	-14.0
	13.9	14.2	0.6	0.3	-1.2	-1.6	2.2	-7.8	-10.1

1. Average standard error of change in two consecutive months (see "Sampling Errors" in the **Data Quality** section for further explanations).

2. Also referred to as "Natural resources".

Note: Related CANSIM tables 282-0087 and 282-0088. The sum of individual categories may not always add to the total due to rounding.

Table 4-2
Selected labour force characteristics (seasonally adjusted) — Prince Edward Island

	August 2017	September 2017	S.E. ¹	Change from			Percent change from		
				last month	last December	twelve months ago	last month	last December	twelve months ago
				in thousands (except rates)			percent		
Both sexes, 15 years and over									
Population	124.1	124.2	...	0.1	1.8	2.0	0.1	1.5	1.6
Labour force	80.9	80.8	0.6	-0.1	0.2	0.6	-0.1	0.2	0.7
Employment	73.8	73.1	0.6	-0.7	1.0	1.6	-0.9	1.4	2.2
Employment full-time	60.7	60.3	0.8	-0.4	1.3	1.9	-0.7	2.2	3.3
Unemployment	7.1	7.7	0.6	0.6	-0.8	-0.9	8.5	-9.4	-10.5
Participation rate	65.2	65.1	0.5	-0.1	-0.7	-0.5
Unemployment rate	8.8	9.5	0.7	0.7	-1.0	-1.2
Employment rate	59.5	58.9	0.5	-0.6	0.0	0.4
Part-time rate	17.8	17.5	1.0	-0.2	-0.7	-0.8
Both sexes, 15 to 24 years									
Population	17.7	17.7	...	0.0	0.0	-0.1	0.0	0.0	-0.6
Labour force	11.4	11.1	0.3	-0.3	-1.3	-1.2	-2.6	-10.5	-9.8
Employment	10.4	10.0	0.3	-0.4	-0.7	-0.3	-3.8	-6.5	-2.9
Unemployment	1.0	1.1	0.3	0.1	-0.6	-0.9	10.0	-35.3	-45.0
Participation rate	64.4	62.7	1.9	-1.7	-7.4	-6.4
Unemployment rate	8.8	9.9	2.4	1.1	-3.8	-6.4
Employment rate	58.8	56.5	1.9	-2.3	-4.0	-1.4
Part-time rate	42.3	42.0	3.6	-0.3	-4.7	-4.6
Men, 25 years and over									
Population	51.1	51.2	...	0.1	1.0	1.1	0.2	2.0	2.2
Labour force	35.9	36.4	0.3	0.5	1.1	1.3	1.4	3.1	3.7
Employment	32.3	32.6	0.4	0.3	1.7	1.9	0.9	5.5	6.2
Unemployment	3.6	3.8	0.4	0.2	-0.6	-0.6	5.6	-13.6	-13.6
Participation rate	70.3	71.1	0.7	0.8	0.8	1.0
Unemployment rate	10.0	10.4	1.0	0.4	-2.1	-2.1
Employment rate	63.2	63.7	0.8	0.5	2.1	2.4
Part-time rate	9.3	9.8	1.0	0.5	1.4	1.3
Women, 25 years and over									
Population	55.3	55.4	...	0.1	0.9	1.1	0.2	1.7	2.0
Labour force	33.6	33.4	0.3	-0.2	0.5	0.6	-0.6	1.5	1.8
Employment	31.1	30.5	0.3	-0.6	0.0	0.0	-1.9	0.0	0.0
Unemployment	2.5	2.9	0.3	0.4	0.5	0.7	16.0	20.8	31.8
Participation rate	60.8	60.3	0.6	-0.5	-0.1	-0.1
Unemployment rate	7.4	8.7	0.9	1.3	1.4	2.0
Employment rate	56.2	55.1	0.6	-1.1	-0.9	-1.1
Part-time rate	18.0	17.7	1.4	-0.3	-0.3	-1.0
Industry									
Goods-producing sector	73.8	73.1	0.6	-0.7	1.0	1.6	-0.9	1.4	2.2
Wholesale and retail trade	17.5	17.8	0.5	0.3	1.6	1.1	1.7	9.9	6.6
Agriculture	3.0	3.2	0.3	0.2	0.3	-0.4	6.7	10.3	-11.1
Forestry, fishing, mining, quarrying, oil and gas extraction ²	2.4	2.6	0.3	0.2	0.3	0.4	8.3	13.0	18.2
Utilities	x	x	0.1	x	x	x	x	x	x
Construction	5.2	5.3	0.2	0.1	0.5	0.5	1.9	10.4	10.4
Manufacturing	6.8	6.6	0.2	-0.2	0.6	0.8	-2.9	10.0	13.8
Services-producing sector	56.3	55.3	0.6	-1.0	-0.6	0.5	-1.8	-1.1	0.9
Wholesale and retail trade	11.4	11.0	0.3	-0.4	0.6	0.9	-3.5	5.8	8.9
Transportation and warehousing	2.9	2.7	0.2	-0.2	-0.1	0.3	-6.9	-3.6	12.5
Finance, insurance, real estate, rental and leasing	2.9	2.8	0.1	-0.1	0.0	0.1	-3.4	0.0	3.7
Professional, scientific and technical services	3.5	3.5	0.2	0.0	0.2	0.0	0.0	6.1	0.0
Business, building and other support services	2.0	1.9	0.2	-0.1	-0.4	-0.5	-5.0	-17.4	-20.8
Educational services	5.2	5.5	0.2	0.3	0.0	0.4	5.8	0.0	7.8
Health care and social assistance	10.4	10.4	0.2	0.0	0.3	0.4	0.0	3.0	4.0
Information, culture and recreation	2.7	2.7	0.2	0.0	-0.2	-0.1	0.0	-6.9	-3.6
Accommodation and food services	5.4	5.0	0.3	-0.4	-0.6	-0.7	-7.4	-10.7	-12.3
Other services (except public administration)	3.4	3.2	0.2	-0.2	-0.3	0.0	-5.9	-8.6	0.0
Public administration	6.4	6.7	0.2	0.3	0.0	0.1	4.7	0.0	1.5

1. Average standard error of change in two consecutive months (see "Sampling Errors" in the **Data Quality** section for further explanations).

2. Also referred to as "Natural resources".

Note: Related CANSIM tables 282-0087 and 282-0088. The sum of individual categories may not always add to the total due to rounding.

Table 4-3
Selected labour force characteristics (seasonally adjusted) — Nova Scotia

	August 2017	September 2017	S.E. ¹	Change from			Percent change from		
				last month	last December	twelve months ago	last month	last December	twelve months ago
				in thousands (except rates)			percent		
Both sexes, 15 years and over									
Population	793.3	793.7	...	0.4	3.7	4.2	0.1	0.5	0.5
Labour force	487.8	491.2	2.5	3.4	2.3	8.3	0.7	0.5	1.7
Employment	444.6	446.9	2.7	2.3	-1.6	3.1	0.5	-0.4	0.7
Employment full-time	356.6	361.4	3.5	4.8	6.3	-1.5	1.3	1.8	-0.4
Unemployment	43.2	44.3	2.3	1.1	3.9	5.3	2.5	9.7	13.6
Participation rate	61.5	61.9	0.3	0.4	0.0	0.7
Unemployment rate	8.9	9.0	0.5	0.1	0.7	0.9
Employment rate	56.0	56.3	0.3	0.3	-0.5	0.1
Part-time rate	19.8	19.1	0.7	-0.7	-1.7	0.9
Both sexes, 15 to 24 years									
Population	108.4	108.4	...	0.0	-0.7	-1.1	0.0	-0.6	-1.0
Labour force	70.0	71.4	1.5	1.4	3.5	7.6	2.0	5.2	11.9
Employment	56.2	58.1	1.5	1.9	1.0	2.8	3.4	1.8	5.1
Unemployment	13.8	13.3	1.3	-0.5	2.6	4.8	-3.6	24.3	56.5
Participation rate	64.6	65.9	1.4	1.3	3.7	7.6
Unemployment rate	19.7	18.6	1.8	-1.1	2.8	5.3
Employment rate	51.8	53.6	1.4	1.8	1.3	3.1
Part-time rate	51.4	48.9	2.8	-2.5	-0.2	4.0
Men, 25 years and over									
Population	328.6	328.9	...	0.3	2.6	3.3	0.1	0.8	1.0
Labour force	211.2	214.1	1.4	2.9	-0.4	-0.7	1.4	-0.2	-0.3
Employment	192.1	193.1	1.6	1.0	-1.1	-0.6	0.5	-0.6	-0.3
Unemployment	19.1	21.0	1.6	1.9	0.8	-0.1	9.9	4.0	-0.5
Participation rate	64.3	65.1	0.4	0.8	-0.6	-0.9
Unemployment rate	9.0	9.8	0.7	0.8	0.4	0.0
Employment rate	58.5	58.7	0.5	0.2	-0.8	-0.8
Part-time rate	9.2	9.9	0.8	0.7	0.7	1.5
Women, 25 years and over									
Population	356.3	356.5	...	0.2	1.8	2.2	0.1	0.5	0.6
Labour force	206.7	205.6	1.4	-1.1	-1.0	1.3	-0.5	-0.5	0.6
Employment	196.3	195.6	1.4	-0.7	-1.6	0.8	-0.4	-0.8	0.4
Unemployment	10.4	10.0	1.1	-0.4	0.6	0.5	-3.8	6.4	5.3
Participation rate	58.0	57.7	0.4	-0.3	-0.5	0.0
Unemployment rate	5.0	4.9	0.5	-0.1	0.4	0.2
Employment rate	55.1	54.9	0.4	-0.2	-0.7	-0.1
Part-time rate	21.0	19.3	1.1	-1.7	-4.7	-1.1
Industry	444.6	446.9	2.7	2.3	-1.6	3.1	0.5	-0.4	0.7
Goods-producing sector									
Agriculture	4.8	5.0	0.6	0.2	0.2	0.3	4.2	4.2	6.4
Forestry, fishing, mining, quarrying, oil and gas extraction ²	9.6	9.6	0.8	0.0	-2.0	-1.8	0.0	-17.2	-15.8
Utilities	4.0	4.0	0.2	0.0	0.6	0.6	0.0	17.6	17.6
Construction	30.0	31.0	1.1	1.0	-2.3	-1.8	3.3	-6.9	-5.5
Manufacturing	32.6	31.0	0.9	-1.6	3.2	2.1	-4.9	11.5	7.3
Services-producing sector									
Wholesale and retail trade	74.3	76.6	1.3	2.3	2.6	2.3	3.1	3.5	3.1
Transportation and warehousing	18.7	19.8	0.7	1.1	-0.3	0.2	5.9	-1.5	1.0
Finance, insurance, real estate, rental and leasing	22.3	22.8	0.7	0.5	-0.8	-1.1	2.2	-3.4	-4.6
Professional, scientific and technical services	28.8	26.7	0.8	-2.1	-1.6	-0.5	-7.3	-5.7	-1.8
Business, building and other support services	18.2	18.3	0.8	0.1	1.1	2.1	0.5	6.4	13.0
Educational services	37.2	37.0	1.0	-0.2	0.8	2.2	-0.5	2.2	6.3
Health care and social assistance	70.1	71.1	1.1	1.0	-4.8	-5.3	1.4	-6.3	-6.9
Information, culture and recreation	16.7	17.0	0.8	0.3	1.5	0.7	1.8	9.7	4.3
Accommodation and food services	29.2	29.1	1.1	-0.1	1.0	3.2	-0.3	3.6	12.4
Other services (except public administration)	18.6	18.4	0.8	-0.2	-2.4	-1.5	-1.1	-11.5	-7.5
Public administration	29.4	29.5	0.8	0.1	1.5	1.4	0.3	5.4	5.0

1. Average standard error of change in two consecutive months (see "Sampling Errors" in the **Data Quality** section for further explanations).

2. Also referred to as "Natural resources".

Note: Related CANSIM tables 282-0087 and 282-0088. The sum of individual categories may not always add to the total due to rounding.

Table 4-4
Selected labour force characteristics (seasonally adjusted) — New Brunswick

	August 2017	September 2017	S.E. ¹	Change from			Percent change from		
				last month	last December	twelve months ago	last month	last December	twelve months ago
				in thousands (except rates)			percent		
Both sexes, 15 years and over									
Population	625.0	625.2	...	0.2	1.3	1.5	0.0	0.2	0.2
Labour force	381.6	382.3	2.2	0.7	-9.2	-9.9	0.2	-2.3	-2.5
Employment	351.9	352.6	2.2	0.7	-2.3	-3.5	0.2	-0.6	-1.0
Employment full-time	298.9	301.5	2.8	2.6	2.5	3.1	0.9	0.8	1.0
Unemployment	29.7	29.7	2.0	0.0	-6.9	-6.4	0.0	-18.9	-17.7
Participation rate	61.1	61.1	0.4	0.0	-1.7	-1.8
Unemployment rate	7.8	7.8	0.5	0.0	-1.5	-1.4
Employment rate	56.3	56.4	0.3	0.1	-0.5	-0.7
Part-time rate	15.1	14.5	0.6	-0.5	-1.3	-1.7
Both sexes, 15 to 24 years									
Population	81.8	81.7	...	-0.1	-0.7	-1.0	-0.1	-0.8	-1.2
Labour force	50.4	51.4	1.2	1.0	-3.5	-3.6	2.0	-6.4	-6.5
Employment	44.0	43.4	1.1	-0.6	-3.6	-5.2	-1.4	-7.7	-10.7
Unemployment	6.4	7.9	1.0	1.5	0.0	1.4	23.4	0.0	21.5
Participation rate	61.6	62.9	1.4	1.3	-3.7	-3.6
Unemployment rate	12.7	15.4	1.8	2.7	1.0	3.6
Employment rate	53.8	53.1	1.3	-0.7	-3.9	-5.7
Part-time rate	40.2	38.5	2.6	-1.7	-0.9	-3.5
Men, 25 years and over									
Population	262.8	262.9	...	0.1	0.8	1.0	0.0	0.3	0.4
Labour force	173.1	171.5	1.2	-1.6	-3.4	-4.4	-0.9	-1.9	-2.5
Employment	157.2	157.1	1.3	-0.1	1.9	0.4	-0.1	1.2	0.3
Unemployment	15.9	14.4	1.3	-1.5	-5.2	-4.8	-9.4	-26.5	-25.0
Participation rate	65.9	65.2	0.5	-0.7	-1.5	-2.0
Unemployment rate	9.2	8.4	0.7	-0.8	-2.8	-2.5
Employment rate	59.8	59.8	0.5	0.0	0.6	0.0
Part-time rate	6.9	6.4	0.7	-0.5	-0.5	0.0
Women, 25 years and over									
Population	280.4	280.6	...	0.2	1.2	1.6	0.1	0.4	0.6
Labour force	158.1	159.4	1.2	1.3	-2.4	-1.9	0.8	-1.5	-1.2
Employment	150.7	152.1	1.2	1.4	-0.6	1.2	0.9	-0.4	0.8
Unemployment	7.4	7.4	1.0	0.0	-1.7	-3.0	0.0	-18.7	-28.8
Participation rate	56.4	56.8	0.4	0.4	-1.1	-1.0
Unemployment rate	4.7	4.6	0.6	-0.1	-1.0	-1.8
Employment rate	53.7	54.2	0.4	0.5	-0.5	0.1
Part-time rate	16.3	16.1	1.1	-0.1	-1.5	-2.0
Industry									
Goods-producing sector	351.9	352.6	2.2	0.7	-2.3	-3.5	0.2	-0.6	-1.0
Agriculture	70.5	73.7	1.5	3.2	1.1	-2.0	4.5	1.5	-2.6
Forestry, fishing, mining, quarrying, oil and gas extraction ²	4.7	4.9	0.5	0.2	-1.3	-1.3	4.3	-21.0	-21.0
Utilities	7.5	8.5	0.6	1.0	-0.2	-0.4	13.3	-2.3	-4.5
Construction	3.3	2.8	0.2	-0.5	-1.3	-1.0	-15.2	-31.7	-26.3
Manufacturing	24.5	25.4	0.9	0.9	2.7	1.3	3.7	11.9	5.4
Services-producing sector	30.4	32.0	0.9	1.6	1.2	-0.8	5.3	3.9	-2.4
Wholesale and retail trade	281.4	279.0	1.9	-2.4	-3.4	-1.4	-0.9	-1.2	-0.5
Transportation and warehousing	56.2	54.7	1.0	-1.5	-3.7	-5.0	-2.7	-6.3	-8.4
Finance, insurance, real estate, rental and leasing	17.1	17.2	0.6	0.1	-0.4	-1.6	0.6	-2.3	-8.5
Professional, scientific and technical services	16.4	17.0	0.5	0.6	-0.7	-0.1	3.7	-4.0	-0.6
Business, building and other support services	15.8	15.4	0.5	-0.4	0.7	1.0	-2.5	4.8	6.9
Educational services	18.0	17.4	0.6	-0.6	2.5	1.8	-3.3	16.8	11.5
Health care and social assistance	26.0	27.2	0.7	1.2	1.1	1.6	4.6	4.2	6.3
Information, culture and recreation	58.7	58.5	0.9	-0.2	3.1	4.7	-0.3	5.6	8.7
Accommodation and food services	10.8	10.1	0.7	-0.7	-2.9	-2.6	-6.5	-22.3	-20.5
Other services (except public administration)	23.5	24.3	0.8	0.8	1.1	2.4	3.4	4.7	11.0
Public administration	15.0	14.4	0.6	-0.6	-3.2	-3.0	-4.0	-18.2	-17.2
Public administration	23.9	22.8	0.6	-1.1	-1.1	-0.8	-4.6	-4.6	-3.4

1. Average standard error of change in two consecutive months (see "Sampling Errors" in the **Data Quality** section for further explanations).

2. Also referred to as "Natural resources".

Note: Related CANSIM tables 282-0087 and 282-0088. The sum of individual categories may not always add to the total due to rounding.

Table 4-5
Selected labour force characteristics (seasonally adjusted) — Quebec

	August 2017	September 2017	S.E. ¹	Change from			Percent change from		
				last month	last December	twelve months ago	last month	last December	twelve months ago
				in thousands (except rates)			percent		
Both sexes, 15 years and over									
Population	6,940.7	6,944.0	...	3.3	38.1	43.9	0.0	0.6	0.6
Labour force	4,504.9	4,492.5	14.9	-12.4	-0.8	14.3	-0.3	0.0	0.3
Employment	4,232.0	4,224.4	15.3	-7.6	25.2	53.5	-0.2	0.6	1.3
Employment full-time	3,392.8	3,410.1	21.0	17.3	14.0	35.6	0.5	0.4	1.1
Unemployment	272.9	268.1	12.8	-4.8	-26.0	-39.2	-1.8	-8.8	-12.8
Participation rate	64.9	64.7	0.2	-0.2	-0.4	-0.2
Unemployment rate	6.1	6.0	0.3	-0.1	-0.5	-0.9
Employment rate	61.0	60.8	0.2	-0.2	0.0	0.4
Part-time rate	19.8	19.3	0.5	-0.6	0.2	0.2
Both sexes, 15 to 24 years									
Population	913.1	911.7	...	-1.4	-14.0	-19.8	-0.2	-1.5	-2.1
Labour force	603.4	586.4	8.3	-17.0	-48.1	-46.6	-2.8	-7.6	-7.4
Employment	536.7	535.1	8.1	-1.6	-28.5	-15.0	-0.3	-5.1	-2.7
Unemployment	66.7	51.3	6.9	-15.4	-19.5	-31.6	-23.1	-27.5	-38.1
Participation rate	66.1	64.3	0.9	-1.8	-4.2	-3.7
Unemployment rate	11.1	8.7	1.0	-2.4	-2.5	-4.4
Employment rate	58.8	58.7	0.9	-0.1	-2.2	-0.4
Part-time rate	55.1	54.8	1.7	-0.4	-0.1	0.5
Men, 25 years and over									
Population	2,973.7	2,976.0	...	2.3	26.4	32.2	0.1	0.9	1.1
Labour force	2,052.5	2,063.8	8.3	11.3	21.9	30.6	0.6	1.1	1.5
Employment	1,932.7	1,942.1	9.1	9.4	36.5	45.2	0.5	1.9	2.4
Unemployment	119.8	121.7	8.0	1.9	-14.6	-14.6	1.6	-10.7	-10.7
Participation rate	69.0	69.3	0.3	0.3	0.1	0.2
Unemployment rate	5.8	5.9	0.4	0.1	-0.8	-0.8
Employment rate	65.0	65.3	0.3	0.3	0.7	0.9
Part-time rate	9.2	9.2	0.5	0.0	0.4	-0.1
Women, 25 years and over									
Population	3,053.9	3,056.3	...	2.4	25.6	31.5	0.1	0.8	1.0
Labour force	1,849.1	1,842.2	8.4	-6.9	25.3	30.3	-0.4	1.4	1.7
Employment	1,762.6	1,747.1	8.7	-15.5	17.1	23.2	-0.9	1.0	1.3
Unemployment	86.5	95.1	7.0	8.6	8.2	7.1	9.9	9.4	8.1
Participation rate	60.5	60.3	0.3	-0.2	0.4	0.4
Unemployment rate	4.7	5.2	0.4	0.5	0.4	0.3
Employment rate	57.7	57.2	0.3	-0.5	0.1	0.2
Part-time rate	20.8	19.6	0.7	-1.1	0.8	0.9
Industry									
Goods-producing sector	4,232.0	4,224.4	15.3	-7.6	25.2	53.5	-0.2	0.6	1.3
Wholesale and retail trade	848.7	845.6	8.4	-3.1	3.7	-0.1	-0.4	0.4	0.0
Agriculture	57.8	57.5	2.8	-0.3	5.1	3.7	-0.5	9.7	6.9
Forestry, fishing, mining, quarrying, oil and gas extraction ²	36.5	35.2	1.9	-1.3	0.3	2.7	-3.6	0.9	8.3
Utilities	25.4	25.2	1.1	-0.2	-2.7	-1.5	-0.8	-9.7	-5.6
Construction	237.5	243.4	5.5	5.9	8.8	4.0	2.5	3.8	1.7
Manufacturing	491.5	484.4	6.0	-7.1	-7.7	-8.9	-1.4	-1.6	-1.8
Services-producing sector	3,383.3	3,378.7	14.6	-4.6	21.4	53.6	-0.1	0.6	1.6
Wholesale and retail trade	665.8	666.9	7.6	1.1	-6.0	13.7	0.2	-0.9	2.1
Transportation and warehousing	208.9	208.9	4.2	0.0	12.5	8.2	0.0	6.4	4.1
Finance, insurance, real estate, rental and leasing	235.6	231.7	4.2	-3.9	8.1	10.0	-1.7	3.6	4.5
Professional, scientific and technical services	344.1	331.8	5.5	-12.3	20.1	21.9	-3.6	6.4	7.1
Business, building and other support services	171.5	181.1	5.6	9.6	9.3	-5.7	5.6	5.4	-3.1
Educational services	285.8	296.5	5.5	10.7	-3.9	4.1	3.7	-1.3	1.4
Health care and social assistance	589.4	585.9	5.9	-3.5	12.9	3.5	-0.6	2.3	0.6
Information, culture and recreation	187.2	184.3	5.7	-2.9	-12.1	4.4	-1.5	-6.2	2.4
Accommodation and food services	273.5	274.7	5.6	1.2	-1.6	-13.2	0.4	-0.6	-4.6
Other services (except public administration)	171.4	170.4	4.1	-1.0	-10.3	4.0	-0.6	-5.7	2.4
Public administration	250.2	246.5	3.5	-3.7	-7.6	2.7	-1.5	-3.0	1.1

1. Average standard error of change in two consecutive months (see "Sampling Errors" in the **Data Quality** section for further explanations).

2. Also referred to as "Natural resources".

Note: Related CANSIM tables 282-0087 and 282-0088. The sum of individual categories may not always add to the total due to rounding.

Table 4-6
Selected labour force characteristics (seasonally adjusted) — Ontario

	August 2017	September 2017	S.E. ¹	Change from			Percent change from		
				last month	last December	twelve months ago	last month	last December	twelve months ago
				in thousands (except rates)			percent		
Both sexes, 15 years and over									
Population	11,709.8	11,725.2	...	15.4	133.8	167.3	0.1	1.2	1.4
Labour force	7,565.7	7,601.0	20.4	35.3	75.4	108.5	0.5	1.0	1.4
Employment	7,137.4	7,172.1	19.5	34.7	125.7	169.5	0.5	1.8	2.4
Employment full-time	5,736.2	5,814.0	26.7	77.8	123.9	137.1	1.4	2.2	2.4
Unemployment	428.3	428.9	16.4	0.6	-50.3	-61.0	0.1	-10.5	-12.5
Participation rate	64.6	64.8	0.2	0.2	-0.1	0.0
Unemployment rate	5.7	5.6	0.2	-0.1	-0.8	-0.9
Employment rate	61.0	61.2	0.2	0.2	0.4	0.6
Part-time rate	19.6	18.9	0.3	-0.7	-0.3	0.0
Both sexes, 15 to 24 years									
Population	1,784.8	1,785.9	...	1.1	3.2	2.3	0.1	0.2	0.1
Labour force	1,065.0	1,074.5	12.1	9.5	-6.7	-3.9	0.9	-0.6	-0.4
Employment	952.0	960.8	10.9	8.8	32.9	36.5	0.9	3.5	3.9
Unemployment	113.0	113.7	10.0	0.7	-39.7	-40.4	0.6	-25.9	-26.2
Participation rate	59.7	60.2	0.7	0.5	-0.4	-0.3
Unemployment rate	10.6	10.6	0.9	0.0	-3.6	-3.7
Employment rate	53.3	53.8	0.6	0.5	1.7	2.0
Part-time rate	51.9	49.3	1.3	-2.7	0.7	2.1
Men, 25 years and over									
Population	4,792.7	4,800.1	...	7.4	65.9	83.4	0.2	1.4	1.8
Labour force	3,385.1	3,388.5	10.2	3.4	22.8	43.5	0.1	0.7	1.3
Employment	3,225.8	3,217.1	10.4	-8.7	15.2	49.6	-0.3	0.5	1.6
Unemployment	159.3	171.5	9.2	12.2	7.7	-6.0	7.7	4.7	-3.4
Participation rate	70.6	70.6	0.2	0.0	-0.5	-0.3
Unemployment rate	4.7	5.1	0.3	0.4	0.2	-0.2
Employment rate	67.3	67.0	0.2	-0.3	-0.6	-0.2
Part-time rate	8.6	7.8	0.4	-0.9	-1.2	-1.2
Women, 25 years and over									
Population	5,132.2	5,139.2	...	7.0	64.7	81.6	0.1	1.3	1.6
Labour force	3,115.7	3,137.9	11.6	22.2	59.2	68.9	0.7	1.9	2.2
Employment	2,959.7	2,994.2	11.4	34.5	77.6	83.4	1.2	2.7	2.9
Unemployment	156.0	143.7	9.0	-12.3	-18.4	-14.6	-7.9	-11.4	-9.2
Participation rate	60.7	61.1	0.2	0.4	0.4	0.4
Unemployment rate	5.0	4.6	0.3	-0.4	-0.7	-0.6
Employment rate	57.7	58.3	0.2	0.6	0.8	0.7
Part-time rate	21.2	21.2	0.6	0.0	0.0	0.4
Industry	7,137.4	7,172.1	19.5	34.7	125.7	169.5	0.5	1.8	2.4
Goods-producing sector									
Wholesale and retail trade	1,426.0	1,442.7	10.1	16.7	19.4	29.6	1.2	1.4	2.1
Agriculture	68.5	69.7	2.8	1.2	-2.2	-5.1	1.8	-3.1	-6.8
Forestry, fishing, mining, quarrying, oil and gas extraction ²	34.2	36.0	1.5	1.8	1.8	3.2	5.3	5.3	9.8
Utilities	46.1	46.3	1.5	0.2	-5.0	-3.8	0.4	-9.7	-7.6
Construction	511.7	518.2	6.7	6.5	-2.1	14.9	1.3	-0.4	3.0
Manufacturing	765.4	772.4	7.0	7.0	26.8	20.4	0.9	3.6	2.7
Services-producing sector									
Wholesale and retail trade	5,711.4	5,729.4	19.0	18.0	106.3	139.9	0.3	1.9	2.5
Transportation and warehousing	1,069.9	1,086.3	9.7	16.4	61.4	62.5	1.5	6.0	6.1
Finance, insurance, real estate, rental and leasing	348.6	352.2	5.4	3.6	28.0	21.9	1.0	8.6	6.6
Professional, scientific and technical services	562.8	559.8	6.2	-3.0	-2.5	8.2	-0.5	-0.4	1.5
Business, building and other support services	637.6	643.7	7.2	6.1	37.2	55.9	1.0	6.1	9.5
Educational services	319.7	311.7	7.3	-8.0	-16.5	-15.3	-2.5	-5.0	-4.7
Health care and social assistance	481.9	496.6	7.3	14.7	-3.2	-5.7	3.1	-0.6	-1.1
Information, culture and recreation	881.1	873.2	6.9	-7.9	22.5	30.0	-0.9	2.6	3.6
Accommodation and food services	323.5	306.0	6.6	-17.5	-17.7	-19.2	-5.4	-5.5	-5.9
Other services (except public administration)	452.6	451.4	7.6	-1.2	-8.4	-13.5	-0.3	-1.8	-2.9
Public administration	265.5	273.3	5.4	7.8	-8.4	-2.1	2.9	-3.0	-0.8
Public administration	368.3	375.2	5.0	6.9	13.9	17.3	1.9	3.8	4.8

1. Average standard error of change in two consecutive months (see "Sampling Errors" in the **Data Quality** section for further explanations).

2. Also referred to as "Natural resources".

Note: Related CANSIM tables 282-0087 and 282-0088. The sum of individual categories may not always add to the total due to rounding.

Table 4-7
Selected labour force characteristics (seasonally adjusted) — Manitoba

	August 2017	September 2017	S.E. ¹	Change from			Percent change from		
				last month	last December	twelve months ago	last month	last December	twelve months ago
				in thousands (except rates)			percent		
Both sexes, 15 years and over									
Population	1,015.9	1,016.7	...	0.8	12.3	14.5	0.1	1.2	1.4
Labour force	683.2	681.7	2.6	-1.5	6.4	6.6	-0.2	0.9	1.0
Employment	649.4	643.9	2.6	-5.5	10.9	11.7	-0.8	1.7	1.9
Employment full-time	520.5	520.2	3.6	-0.3	10.8	12.9	-0.1	2.1	2.5
Unemployment	33.7	37.8	2.0	4.1	-4.5	-5.1	12.2	-10.6	-11.9
Participation rate	67.3	67.1	0.3	-0.2	-0.1	-0.3
Unemployment rate	4.9	5.5	0.3	0.6	-0.8	-0.9
Employment rate	63.9	63.3	0.3	-0.6	0.3	0.2
Part-time rate	19.8	19.2	0.5	-0.6	-0.3	-0.5
Both sexes, 15 to 24 years									
Population	165.4	165.4	...	0.0	1.9	2.1	0.0	1.2	1.3
Labour force	109.4	108.8	1.5	-0.6	-0.8	0.9	-0.5	-0.7	0.8
Employment	97.5	96.1	1.4	-1.4	0.8	2.1	-1.4	0.8	2.2
Unemployment	11.9	12.7	1.3	0.8	-1.7	-1.2	6.7	-11.8	-8.6
Participation rate	66.1	65.8	0.9	-0.3	-1.2	-0.3
Unemployment rate	10.9	11.7	1.1	0.8	-1.4	-1.2
Employment rate	58.9	58.1	0.9	-0.8	-0.2	0.5
Part-time rate	45.2	45.2	1.8	-0.1	0.5	-0.2
Men, 25 years and over									
Population	417.3	417.7	...	0.4	5.5	6.5	0.1	1.3	1.6
Labour force	304.8	304.1	1.4	-0.7	1.8	0.5	-0.2	0.6	0.2
Employment	292.6	291.4	1.4	-1.2	4.8	3.7	-0.4	1.7	1.3
Unemployment	12.2	12.8	1.2	0.6	-2.9	-3.2	4.9	-18.5	-20.0
Participation rate	73.0	72.8	0.3	-0.2	-0.5	-1.0
Unemployment rate	4.0	4.2	0.4	0.2	-1.0	-1.1
Employment rate	70.1	69.8	0.3	-0.3	0.3	-0.2
Part-time rate	8.4	7.5	0.5	-0.8	-1.2	-1.7
Women, 25 years and over									
Population	433.3	433.6	...	0.3	4.9	5.9	0.1	1.1	1.4
Labour force	269.0	268.7	1.5	-0.3	5.3	5.1	-0.1	2.0	1.9
Employment	259.3	256.5	1.5	-2.8	5.3	5.9	-1.1	2.1	2.4
Unemployment	9.7	12.3	1.0	2.6	0.0	-0.8	26.8	0.0	-6.1
Participation rate	62.1	62.0	0.3	-0.1	0.6	0.4
Unemployment rate	3.6	4.6	0.4	1.0	-0.1	-0.4
Employment rate	59.8	59.2	0.3	-0.6	0.6	0.6
Part-time rate	23.3	22.8	0.8	-0.5	0.6	0.6
Industry									
Goods-producing sector	649.4	643.9	2.6	-5.5	10.9	11.7	-0.8	1.7	1.9
Agriculture	153.8	150.6	1.6	-3.2	1.4	-1.2	-2.1	0.9	-0.8
Forestry, fishing, mining, quarrying, oil and gas extraction ²	24.5	24.4	0.9	-0.1	1.1	-0.9	-0.4	4.7	-3.6
Utilities	6.6	6.2	0.3	-0.4	-0.3	0.1	-6.1	-4.6	1.6
Construction	8.2	8.5	0.3	0.3	-1.4	-1.5	3.7	-14.1	-15.0
Manufacturing	48.5	47.3	1.1	-1.2	1.8	1.9	-2.5	4.0	4.2
Services-producing sector	66.0	64.1	0.9	-1.9	0.1	-0.9	-2.9	0.2	-1.4
Wholesale and retail trade	495.6	493.3	2.4	-2.3	9.5	12.9	-0.5	2.0	2.7
Transportation and warehousing	92.0	92.0	1.2	0.0	4.9	3.3	0.0	5.6	3.7
Finance, insurance, real estate, rental and leasing	36.3	37.4	0.8	1.1	1.8	1.8	3.0	5.1	5.1
Professional, scientific and technical services	37.7	36.6	0.7	-1.1	0.6	1.8	-2.9	1.7	5.2
Business, building and other support services	27.6	27.9	0.7	0.3	-0.6	0.1	1.1	-2.1	0.4
Educational services	20.5	20.5	0.7	0.0	1.4	2.2	0.0	7.3	12.0
Health care and social assistance	51.2	52.5	1.1	1.3	2.8	5.2	2.5	5.6	11.0
Information, culture and recreation	103.2	100.1	1.1	-3.1	-1.8	-3.0	-3.0	-1.8	-2.9
Accommodation and food services	24.3	23.5	0.8	-0.8	-1.2	1.0	-3.3	-4.9	4.4
Other services (except public administration)	42.4	42.7	1.0	0.3	2.8	1.0	0.7	7.0	2.4
Public administration	27.8	27.5	0.7	-0.3	-0.3	0.1	-1.1	-1.1	0.4
	32.8	32.6	0.6	-0.2	-0.9	-0.5	-0.6	-2.7	-1.5

1. Average standard error of change in two consecutive months (see "Sampling Errors" in the **Data Quality** section for further explanations).

2. Also referred to as "Natural resources".

Note: Related CANSIM tables 282-0087 and 282-0088. The sum of individual categories may not always add to the total due to rounding.

Table 4-8
Selected labour force characteristics (seasonally adjusted) — Saskatchewan

	August 2017	September 2017	S.E. ¹	Change from			Percent change from		
				last month	last December	twelve months ago	last month	last December	twelve months ago
				in thousands (except rates)			percent		
Both sexes, 15 years and over									
Population	878.0	878.8	...	0.8	6.3	7.8	0.1	0.7	0.9
Labour force	607.0	605.7	2.5	-1.3	-2.4	-5.9	-0.2	-0.4	-1.0
Employment	568.1	568.1	2.5	0.0	-0.1	-1.4	0.0	0.0	-0.2
Employment full-time	464.8	468.1	3.5	3.3	1.5	1.5	0.7	0.3	0.3
Unemployment	39.0	37.6	2.1	-1.4	-2.3	-4.4	-3.6	-5.8	-10.5
Participation rate	69.1	68.9	0.3	-0.2	-0.8	-1.3
Unemployment rate	6.4	6.2	0.3	-0.2	-0.4	-0.7
Employment rate	64.7	64.6	0.3	-0.1	-0.5	-0.8
Part-time rate	18.2	17.6	0.5	-0.6	-0.3	-0.5
Both sexes, 15 to 24 years									
Population	133.7	133.7	...	0.0	-0.6	-0.9	0.0	-0.4	-0.7
Labour force	87.5	84.6	1.3	-2.9	-2.0	-6.3	-3.3	-2.3	-6.9
Employment	76.2	74.4	1.3	-1.8	-3.5	-4.8	-2.4	-4.5	-6.1
Unemployment	11.3	10.1	1.2	-1.2	1.4	-1.6	-10.6	16.1	-13.7
Participation rate	65.4	63.3	1.0	-2.1	-1.2	-4.2
Unemployment rate	12.9	11.9	1.3	-1.0	1.9	-1.0
Employment rate	57.0	55.6	1.0	-1.4	-2.4	-3.2
Part-time rate	45.1	44.2	2.0	-0.9	5.1	7.5
Men, 25 years and over									
Population	372.6	373.0	...	0.4	3.6	4.4	0.1	1.0	1.2
Labour force	283.9	285.0	1.3	1.1	-2.3	-0.7	0.4	-0.8	-0.2
Employment	269.5	269.2	1.5	-0.3	1.0	1.1	-0.1	0.4	0.4
Unemployment	14.4	15.8	1.3	1.4	-3.3	-1.7	9.7	-17.3	-9.7
Participation rate	76.2	76.4	0.4	0.2	-1.4	-1.1
Unemployment rate	5.1	5.5	0.4	0.4	-1.1	-0.6
Employment rate	72.3	72.2	0.4	-0.1	-0.4	-0.5
Part-time rate	7.4	6.9	0.6	-0.4	0.1	-0.6
Women, 25 years and over									
Population	371.8	372.1	...	0.3	3.3	4.3	0.1	0.9	1.2
Labour force	235.7	236.2	1.5	0.5	2.0	1.2	0.2	0.9	0.5
Employment	222.4	224.5	1.5	2.1	2.4	2.3	0.9	1.1	1.0
Unemployment	13.2	11.7	1.1	-1.5	-0.4	-1.1	-11.4	-3.3	-8.6
Participation rate	63.4	63.5	0.4	0.1	0.0	-0.4
Unemployment rate	5.6	5.0	0.4	-0.6	-0.2	-0.4
Employment rate	59.8	60.3	0.4	0.5	0.1	-0.1
Part-time rate	22.0	21.6	0.9	-0.4	-2.1	-2.6
Industry									
Goods-producing sector	568.1	568.1	2.5	0.0	-0.1	-1.4	0.0	0.0	-0.2
Agriculture	148.9	146.8	1.8	-2.1	-2.7	-3.9	-1.4	-1.8	-2.6
Forestry, fishing, mining, quarrying, oil and gas extraction ²	37.0	35.6	1.2	-1.4	-4.2	-5.0	-3.8	-10.6	-12.3
Utilities	24.5	24.0	0.7	-0.5	-0.9	-0.6	-2.0	-3.6	-2.4
Construction	6.9	7.0	0.2	0.1	0.2	0.2	1.4	2.9	2.9
Manufacturing	52.1	52.7	1.1	0.6	1.9	0.7	1.2	3.7	1.3
Services-producing sector	28.5	27.5	0.7	-1.0	0.4	0.7	-3.5	1.5	2.6
Wholesale and retail trade	419.2	421.3	2.3	2.1	2.5	2.5	0.5	0.6	0.6
Transportation and warehousing	91.8	92.2	1.3	0.4	1.4	3.5	0.4	1.5	3.9
Finance, insurance, real estate, rental and leasing	28.3	29.2	0.8	0.9	0.8	1.2	3.2	2.8	4.3
Professional, scientific and technical services	27.7	27.8	0.6	0.1	1.0	0.6	0.4	3.7	2.2
Business, building and other support services	29.6	29.6	0.8	0.0	-1.4	0.8	0.0	-4.5	2.8
Educational services	14.2	13.9	0.6	-0.3	0.8	1.1	-2.1	6.1	8.6
Health care and social assistance	40.1	40.7	1.0	0.6	-0.4	-0.6	1.5	-1.0	-1.5
Information, culture and recreation	74.8	75.6	1.1	0.8	-1.4	-3.8	1.1	-1.8	-4.8
Accommodation and food services	21.1	20.8	0.8	-0.3	0.2	0.7	-1.4	1.0	3.5
Other services (except public administration)	37.6	35.7	0.9	-1.9	-0.9	-2.5	-5.1	-2.5	-6.5
Public administration	24.7	25.9	0.7	1.2	2.4	1.7	4.9	10.2	7.0
	29.4	29.8	0.6	0.4	-0.1	-0.4	1.4	-0.3	-1.3

1. Average standard error of change in two consecutive months (see "Sampling Errors" in the **Data Quality** section for further explanations).

2. Also referred to as "Natural resources".

Note: Related CANSIM tables 282-0087 and 282-0088. The sum of individual categories may not always add to the total due to rounding.

Table 4-9
Selected labour force characteristics (seasonally adjusted) — Alberta

	August 2017	September 2017	S.E. ¹	Change from			Percent change from		
				last month	last December	twelve months ago	last month	last December	twelve months ago
				in thousands (except rates)			percent		
Both sexes, 15 years and over									
Population	3,434.5	3,436.7	...	2.2	27.1	29.5	0.1	0.8	0.9
Labour force	2,488.9	2,473.1	9.3	-15.8	-6.1	-7.5	-0.6	-0.2	-0.3
Employment	2,286.5	2,278.7	10.2	-7.8	11.3	13.3	-0.3	0.5	0.6
Employment full-time	1,867.6	1,869.9	13.6	2.3	23.8	31.5	0.1	1.3	1.7
Unemployment	202.4	194.4	9.0	-8.0	-17.5	-20.8	-4.0	-8.3	-9.7
Participation rate	72.5	72.0	0.3	-0.5	-0.7	-0.8
Unemployment rate	8.1	7.9	0.4	-0.2	-0.6	-0.8
Employment rate	66.6	66.3	0.3	-0.3	-0.2	-0.2
Part-time rate	18.3	17.9	0.5	-0.4	-0.6	-0.9
Both sexes, 15 to 24 years									
Population	509.6	509.2	...	-0.4	-3.6	-5.8	-0.1	-0.7	-1.1
Labour force	342.6	323.1	5.4	-19.5	-24.3	-31.9	-5.7	-7.0	-9.0
Employment	292.7	284.7	5.3	-8.0	-19.0	-21.2	-2.7	-6.3	-6.9
Unemployment	49.9	38.3	4.8	-11.6	-5.3	-10.8	-23.2	-12.2	-22.0
Participation rate	67.2	63.5	1.0	-3.7	-4.2	-5.4
Unemployment rate	14.6	11.9	1.3	-2.7	-0.7	-1.9
Employment rate	57.4	55.9	1.0	-1.5	-3.3	-3.5
Part-time rate	44.1	41.0	2.0	-3.0	-0.7	0.6
Men, 25 years and over									
Population	1,475.0	1,476.0	...	1.0	13.0	14.6	0.1	0.9	1.0
Labour force	1,187.4	1,184.4	5.2	-3.0	4.5	4.0	-0.3	0.4	0.3
Employment	1,106.2	1,098.8	5.9	-7.4	20.7	23.1	-0.7	1.9	2.1
Unemployment	81.2	85.6	5.6	4.4	-16.2	-19.1	5.4	-15.9	-18.2
Participation rate	80.5	80.2	0.4	-0.3	-0.4	-0.6
Unemployment rate	6.8	7.2	0.5	0.4	-1.4	-1.7
Employment rate	75.0	74.4	0.4	-0.6	0.7	0.8
Part-time rate	6.7	6.5	0.6	-0.2	-1.4	-1.5
Women, 25 years and over									
Population	1,449.8	1,451.5	...	1.7	17.7	20.8	0.1	1.2	1.5
Labour force	958.9	965.7	5.6	6.8	13.7	20.6	0.7	1.4	2.2
Employment	887.6	895.2	5.9	7.6	9.7	11.4	0.9	1.1	1.3
Unemployment	71.4	70.5	4.8	-0.9	4.0	9.1	-1.3	6.0	14.8
Participation rate	66.1	66.5	0.4	0.4	0.1	0.4
Unemployment rate	7.4	7.3	0.5	-0.1	0.3	0.8
Employment rate	61.2	61.7	0.4	0.5	-0.1	-0.1
Part-time rate	24.3	24.6	0.9	0.3	1.0	0.1
Industry									
Goods-producing sector	2,286.5	2,278.7	10.2	-7.8	11.3	13.3	-0.3	0.5	0.6
Agriculture	581.4	584.3	6.3	2.9	14.0	8.4	0.5	2.5	1.5
Forestry, fishing, mining, quarrying, oil and gas extraction ²	49.0	51.2	2.1	2.2	-0.2	-0.2	4.5	-0.4	-0.4
Utilities	146.0	147.2	3.1	1.2	6.6	8.0	0.8	4.7	5.7
Construction	22.0	21.7	0.9	-0.3	0.6	2.0	-1.4	2.8	10.2
Manufacturing	240.4	243.4	4.7	3.0	-4.1	-7.7	1.2	-1.7	-3.1
Services-producing sector	124.1	120.8	2.8	-3.3	11.2	6.2	-2.7	10.2	5.4
Wholesale and retail trade	1,705.0	1,694.4	9.4	-10.6	-2.7	5.0	-0.6	-0.2	0.3
Transportation and warehousing	335.1	334.5	4.9	-0.6	9.2	2.8	-0.2	2.8	0.8
Finance, insurance, real estate, rental and leasing	144.0	144.1	3.2	0.1	10.1	11.1	0.1	7.5	8.3
Professional, scientific and technical services	107.6	107.7	2.5	0.1	5.9	1.2	0.1	5.8	1.1
Business, building and other support services	176.2	174.3	3.8	-1.9	-7.7	-5.1	-1.1	-4.2	-2.8
Educational services	83.6	83.3	3.0	-0.3	5.6	4.6	-0.4	7.2	5.8
Health care and social assistance	143.7	145.8	3.5	2.1	-6.6	-7.4	1.5	-4.3	-4.8
Information, culture and recreation	269.1	272.9	3.7	3.8	-3.8	4.5	1.4	-1.4	1.7
Accommodation and food services	72.0	68.6	3.0	-3.4	-4.3	-4.3	-4.7	-5.9	-5.9
Other services (except public administration)	158.1	150.3	3.6	-7.8	3.3	-0.2	-4.9	2.2	-0.1
Public administration	111.9	110.6	3.2	-1.3	-14.3	-7.4	-1.2	-11.4	-6.3
	103.6	102.3	2.2	-1.3	-0.2	5.2	-1.3	-0.2	5.4

1. Average standard error of change in two consecutive months (see "Sampling Errors" in the **Data Quality** section for further explanations).

2. Also referred to as "Natural resources".

Note: Related CANSIM tables 282-0087 and 282-0088. The sum of individual categories may not always add to the total due to rounding.

Table 4-10
Selected labour force characteristics (seasonally adjusted) — British Columbia

	August 2017	September 2017	S.E. ¹	Change from			Percent change from		
				last month	last December	twelve months ago	last month	last December	twelve months ago
				in thousands (except rates)			percent		
Both sexes, 15 years and over									
Population	3,988.1	3,991.7	...	3.6	38.9	47.8	0.1	1.0	1.2
Labour force	2,612.1	2,599.7	10.6	-12.4	43.3	69.1	-0.5	1.7	2.7
Employment	2,480.0	2,473.3	10.6	-6.7	65.1	85.1	-0.3	2.7	3.6
Employment full-time	1,930.0	1,935.0	15.0	5.0	67.6	70.5	0.3	3.6	3.8
Unemployment	132.1	126.3	8.6	-5.8	-21.9	-16.1	-4.4	-14.8	-11.3
Participation rate	65.5	65.1	0.3	-0.4	0.4	0.9
Unemployment rate	5.1	4.9	0.3	-0.2	-0.9	-0.7
Employment rate	62.2	62.0	0.3	-0.2	1.1	1.4
Part-time rate	22.2	21.8	0.6	-0.4	-0.7	-0.2
Both sexes, 15 to 24 years									
Population	580.7	580.8	...	0.1	-2.1	-3.0	0.0	-0.4	-0.5
Labour force	387.1	380.0	6.1	-7.1	8.0	17.4	-1.8	2.2	4.8
Employment	349.2	353.0	6.0	3.8	13.5	19.9	1.1	4.0	6.0
Unemployment	37.9	27.0	5.1	-10.9	-5.5	-2.5	-28.8	-16.9	-8.5
Participation rate	66.7	65.4	1.0	-1.3	1.6	3.3
Unemployment rate	9.8	7.1	1.3	-2.7	-1.6	-1.0
Employment rate	60.1	60.8	1.0	0.7	2.6	3.7
Part-time rate	47.5	48.4	2.0	0.9	-3.9	0.9
Men, 25 years and over									
Population	1,662.0	1,663.8	...	1.8	19.7	24.5	0.1	1.2	1.5
Labour force	1,160.3	1,159.1	5.8	-1.2	18.0	24.7	-0.1	1.6	2.2
Employment	1,113.2	1,106.2	6.0	-7.0	28.7	35.8	-0.6	2.7	3.3
Unemployment	47.1	52.8	5.1	5.7	-10.9	-11.1	12.1	-17.1	-17.4
Participation rate	69.8	69.7	0.4	-0.1	0.3	0.5
Unemployment rate	4.1	4.6	0.4	0.5	-1.0	-1.0
Employment rate	67.0	66.5	0.4	-0.5	1.0	1.2
Part-time rate	10.4	9.9	0.6	-0.5	-0.2	0.9
Women, 25 years and over									
Population	1,745.4	1,747.1	...	1.7	21.2	26.4	0.1	1.2	1.5
Labour force	1,064.7	1,060.6	5.9	-4.1	17.3	27.0	-0.4	1.7	2.6
Employment	1,017.6	1,014.2	5.9	-3.4	22.9	29.5	-0.3	2.3	3.0
Unemployment	47.1	46.4	4.5	-0.7	-5.7	-2.5	-1.5	-10.9	-5.1
Participation rate	61.0	60.7	0.3	-0.3	0.3	0.6
Unemployment rate	4.4	4.4	0.4	0.0	-0.6	-0.3
Employment rate	58.3	58.1	0.3	-0.2	0.7	0.9
Part-time rate	26.4	25.5	0.9	-0.9	-0.2	-1.9
Industry									
Goods-producing sector	2,480.0	2,473.3	10.6	-6.7	65.1	85.1	-0.3	2.7	3.6
Agriculture	497.9	488.9	5.6	-9.0	13.3	25.4	-1.8	2.8	5.5
Forestry, fishing, mining, quarrying, oil and gas extraction ²	27.4	24.0	2.0	-3.4	-5.7	-1.4	-12.4	-19.2	-5.5
Utilities	49.8	50.1	2.2	0.3	3.1	0.8	0.6	6.6	1.6
Construction	12.9	13.1	0.6	0.2	-0.1	-0.4	1.6	-0.8	-3.0
Manufacturing	231.1	225.3	4.1	-5.8	9.8	12.0	-2.5	4.5	5.6
Services-producing sector	176.7	176.4	3.4	-0.3	6.1	14.4	-0.2	3.6	8.9
Wholesale and retail trade	1,982.1	1,984.5	10.2	2.4	51.9	59.8	0.1	2.7	3.1
Transportation and warehousing	378.4	380.5	5.6	2.1	5.5	18.3	0.6	1.5	5.1
Finance, insurance, real estate, rental and leasing	139.5	137.6	3.1	-1.9	-5.8	-2.7	-1.4	-4.0	-1.9
Professional, scientific and technical services	155.7	159.0	3.4	3.3	14.5	17.5	2.1	10.0	12.4
Business, building and other support services	205.9	201.0	4.0	-4.9	7.5	4.6	-2.4	3.9	2.3
Educational services	101.3	99.1	3.6	-2.2	0.6	-12.1	-2.2	0.6	-10.9
Health care and social assistance	163.7	166.2	3.9	2.5	6.2	3.1	1.5	3.9	1.9
Information, culture and recreation	307.9	311.5	4.1	3.6	18.6	22.6	1.2	6.4	7.8
Accommodation and food services	138.2	134.8	4.0	-3.4	9.2	2.0	-2.5	7.3	1.5
Other services (except public administration)	179.5	183.2	4.6	3.7	-4.1	9.1	2.1	-2.2	5.2
Public administration	113.8	111.5	3.4	-2.3	1.2	4.0	-2.0	1.1	3.7
	98.2	100.0	2.2	1.8	-1.5	-6.7	1.8	-1.5	-6.3

1. Average standard error of change in two consecutive months (see "Sampling Errors" in the **Data Quality** section for further explanations).

2. Also referred to as "Natural resources".

Note: Related CANSIM tables 282-0087 and 282-0088. The sum of individual categories may not always add to the total due to rounding.

Table 5-1
Labour force characteristics by census metropolitan area (seasonally adjusted) — three-month moving average

	August 2017	September 2017	S.E. ¹	Change from			Percent change from		
				last month	last December	twelve months ago	last month	last December	twelve months ago
				in thousands (except rates)			percent		
St. John's, Newfoundland and Labrador									
Population	184.5	184.7	...	0.2	2.2	2.7	0.1	1.2	1.5
Labour force	118.9	117.6	0.9	-1.3	-8.8	-9.7	-1.1	-7.0	-7.6
Employment	109.0	107.1	1.0	-1.9	-6.9	-10.9	-1.7	-6.1	-9.2
Unemployment	10.0	10.5	0.5	0.5	-1.9	1.1	5.0	-15.3	11.7
Participation rate	64.4	63.7	0.5	-0.7	-5.6	-6.2
Unemployment rate	8.4	8.9	0.4	0.5	-0.9	1.5
Employment rate	59.1	58.0	0.5	-1.1	-4.5	-6.8
Halifax, Nova Scotia									
Population	359.4	360.0	...	0.6	4.2	5.4	0.2	1.2	1.5
Labour force	240.8	241.5	1.2	0.7	1.0	0.7	0.3	0.4	0.3
Employment	223.7	224.0	1.3	0.3	-1.8	-2.9	0.1	-0.8	-1.3
Unemployment	17.2	17.5	0.8	0.3	2.8	3.6	1.7	19.0	25.9
Participation rate	67.0	67.1	0.3	0.1	-0.5	-0.8
Unemployment rate	7.1	7.2	0.3	0.1	1.1	1.4
Employment rate	62.2	62.2	0.4	0.0	-1.3	-1.8
Moncton, New Brunswick									
Population	127.4	127.5	...	0.1	1.2	1.7	0.1	1.0	1.4
Labour force	80.2	82.0	0.7	1.8	-1.3	-2.8	2.2	-1.6	-3.3
Employment	76.0	77.4	0.8	1.4	0.6	-1.4	1.8	0.8	-1.8
Unemployment	4.1	4.6	0.5	0.5	-1.9	-1.4	12.2	-29.2	-23.3
Participation rate	63.0	64.3	0.6	1.3	-1.7	-3.1
Unemployment rate	5.1	5.6	0.5	0.5	-2.2	-1.5
Employment rate	59.7	60.7	0.6	1.0	-0.1	-1.9
Saint John, New Brunswick									
Population	105.6	105.6	...	0.0	0.2	0.1	0.0	0.2	0.1
Labour force	70.2	69.9	0.7	-0.3	-1.6	1.4	-0.4	-2.2	2.0
Employment	66.2	65.8	0.7	-0.4	0.1	2.5	-0.6	0.2	3.9
Unemployment	4.1	4.0	0.4	-0.1	-1.8	-1.2	-2.4	-31.0	-23.1
Participation rate	66.5	66.2	0.7	-0.3	-1.6	1.3
Unemployment rate	5.8	5.7	0.5	-0.1	-2.4	-1.9
Employment rate	62.7	62.3	0.7	-0.4	0.0	2.3
Saguenay, Quebec									
Population	134.8	134.8	...	0.0	-0.2	-0.2	0.0	-0.1	-0.1
Labour force	83.1	83.0	0.9	-0.1	4.6	4.3	-0.1	5.9	5.5
Employment	77.5	77.5	0.9	0.0	4.8	4.0	0.0	6.6	5.4
Unemployment	5.6	5.5	0.4	-0.1	-0.2	0.3	-1.8	-3.5	5.8
Participation rate	61.6	61.6	0.7	0.0	3.5	3.3
Unemployment rate	6.7	6.6	0.5	-0.1	-0.7	0.0
Employment rate	57.5	57.5	0.6	0.0	3.6	3.1
Québec, Quebec									
Population	680.3	680.8	...	0.5	3.3	4.3	0.1	0.5	0.6
Labour force	454.8	454.8	3.4	0.0	-10.7	-9.7	0.0	-2.3	-2.1
Employment	437.4	436.5	3.4	-0.9	-8.8	-5.9	-0.2	-2.0	-1.3
Unemployment	17.5	18.2	1.4	0.7	-1.9	-3.9	4.0	-9.5	-17.6
Participation rate	66.9	66.8	0.5	-0.1	-1.9	-1.9
Unemployment rate	3.8	4.0	0.3	0.2	-0.3	-0.8
Employment rate	64.3	64.1	0.5	-0.2	-1.6	-1.3
Sherbrooke, Quebec									
Population	183.3	183.5	...	0.2	1.3	1.8	0.1	0.7	1.0
Labour force	111.8	111.0	1.0	-0.8	-3.3	-1.5	-0.7	-2.9	-1.3
Employment	106.2	105.6	1.1	-0.6	-2.5	-0.6	-0.6	-2.3	-0.6
Unemployment	5.6	5.5	0.4	-0.1	-0.7	-0.8	-1.8	-11.3	-12.7
Participation rate	61.0	60.5	0.6	-0.5	-2.2	-1.4
Unemployment rate	5.0	5.0	0.4	0.0	-0.4	-0.6
Employment rate	57.9	57.5	0.6	-0.4	-1.8	-0.9

Table 5-1
Labour force characteristics by census metropolitan area (seasonally adjusted) — three-month moving average

	August 2017	September 2017	S.E. ¹	Change from			Percent change from		
				last month	last December	twelve months ago	last month	last December	twelve months ago
	in thousands (except rates)						percent		
Trois-Rivières, Quebec									
Population	133.8	133.9	...	0.1	0.4	0.5	0.1	0.3	0.4
Labour force	81.0	81.2	0.9	0.2	0.1	2.1	0.2	0.1	2.7
Employment	75.8	76.3	0.9	0.5	1.1	2.9	0.7	1.5	4.0
Unemployment	5.2	4.9	0.4	-0.3	-1.0	-0.8	-5.8	-16.9	-14.0
Participation rate	60.5	60.6	0.7	0.1	-0.1	1.3
Unemployment rate	6.4	6.0	0.4	-0.4	-1.3	-1.2
Employment rate	56.7	57.0	0.7	0.3	0.7	2.0
Montréal, Quebec									
Population	3,422.8	3,426.0	...	3.2	25.7	32.6	0.1	0.8	1.0
Labour force	2,305.7	2,302.0	8.5	-3.7	37.8	57.6	-0.2	1.7	2.6
Employment	2,157.4	2,152.4	8.8	-5.0	39.0	76.7	-0.2	1.8	3.7
Unemployment	148.4	149.7	4.9	1.3	-1.1	-19.0	0.9	-0.7	-11.3
Participation rate	67.4	67.2	0.2	-0.2	0.6	1.1
Unemployment rate	6.4	6.5	0.2	0.1	-0.2	-1.0
Employment rate	63.0	62.8	0.3	-0.2	0.6	1.6
Ottawa-Gatineau, Ontario/Quebec									
Population	1,127.2	1,128.8	...	1.6	12.5	15.8	0.1	1.1	1.4
Labour force	767.0	764.8	4.5	-2.2	-3.8	-2.5	-0.3	-0.5	-0.3
Employment	721.7	720.4	4.6	-1.3	-1.3	1.9	-0.2	-0.2	0.3
Unemployment	45.3	44.4	2.0	-0.9	-2.5	-4.4	-2.0	-5.3	-9.0
Participation rate	68.0	67.8	0.4	-0.2	-1.1	-1.1
Unemployment rate	5.9	5.8	0.3	-0.1	-0.3	-0.6
Employment rate	64.0	63.8	0.4	-0.2	-0.9	-0.8
Ottawa-Gatineau, Quebec part, Ontario/Quebec									
Population	275.9	276.1	...	0.2	1.4	1.7	0.1	0.5	0.6
Labour force	192.2	191.1	1.4	-1.1	4.2	1.6	-0.6	2.2	0.8
Employment	181.1	179.8	1.4	-1.3	4.1	4.5	-0.7	2.3	2.6
Unemployment	11.2	11.4	0.6	0.2	0.1	-2.8	1.8	0.9	-19.7
Participation rate	69.7	69.2	0.5	-0.5	1.2	0.1
Unemployment rate	5.8	6.0	0.3	0.2	0.0	-1.5
Employment rate	65.6	65.1	0.5	-0.5	1.1	1.2
Ottawa-Gatineau, Ontario part, Ontario/Quebec									
Population	851.2	852.7	...	1.5	11.2	14.2	0.2	1.3	1.7
Labour force	574.7	573.6	4.2	-1.1	-8.1	-4.2	-0.2	-1.4	-0.7
Employment	540.7	540.6	4.3	-0.1	-5.5	-2.6	0.0	-1.0	-0.5
Unemployment	34.1	33.0	1.9	-1.1	-2.6	-1.6	-3.2	-7.3	-4.6
Participation rate	67.5	67.3	0.5	-0.2	-1.8	-1.6
Unemployment rate	5.9	5.8	0.3	-0.1	-0.3	-0.2
Employment rate	63.5	63.4	0.5	-0.1	-1.5	-1.4
Kingston, Ontario									
Population	141.6	141.6	...	0.0	1.5	1.7	0.0	1.1	1.2
Labour force	91.6	92.5	0.7	0.9	2.8	3.7	1.0	3.1	4.2
Employment	86.7	87.4	0.7	0.7	2.8	3.3	0.8	3.3	3.9
Unemployment	4.9	5.1	0.3	0.2	0.0	0.4	4.1	0.0	8.5
Participation rate	64.7	65.3	0.5	0.6	1.3	1.8
Unemployment rate	5.3	5.5	0.3	0.2	-0.2	0.2
Employment rate	61.2	61.7	0.5	0.5	1.3	1.6
Peterborough, Ontario									
Population	105.0	105.1	...	0.1	0.4	0.4	0.1	0.4	0.4
Labour force	67.2	67.4	1.2	0.2	1.6	5.0	0.3	2.4	8.0
Employment	61.5	62.7	1.2	1.2	0.5	4.0	2.0	0.8	6.8
Unemployment	5.6	4.8	0.5	-0.8	1.2	1.1	-14.3	33.3	29.7
Participation rate	64.0	64.1	1.2	0.1	1.3	4.5
Unemployment rate	8.3	7.1	0.8	-1.2	1.6	1.2
Employment rate	58.6	59.7	1.2	1.1	0.3	3.6

Table 5-1
Labour force characteristics by census metropolitan area (seasonally adjusted) — three-month moving average

	August 2017	September 2017	S.E. ¹	Change from			Percent change from		
				last month	last December	twelve months ago	last month	last December	twelve months ago
in thousands (except rates)				percent					
Oshawa, Ontario									
Population	332.9	333.4	...	0.5	4.2	5.6	0.2	1.3	1.7
Labour force	225.4	223.0	1.8	-2.4	-5.7	-7.1	-1.1	-2.5	-3.1
Employment	213.5	212.1	1.8	-1.4	-4.8	-3.6	-0.7	-2.2	-1.7
Unemployment	11.9	10.9	0.8	-1.0	-0.9	-3.5	-8.4	-7.6	-24.3
Participation rate	67.7	66.9	0.6	-0.8	-2.6	-3.3
Unemployment rate	5.3	4.9	0.4	-0.4	-0.3	-1.4
Employment rate	64.1	63.6	0.6	-0.5	-2.3	-2.2
Toronto, Ontario									
Population	5,301.0	5,311.3	...	10.3	79.5	102.1	0.2	1.5	2.0
Labour force	3,491.6	3,499.5	10.6	7.9	54.4	43.8	0.2	1.6	1.3
Employment	3,268.8	3,285.9	10.5	17.1	76.5	77.0	0.5	2.4	2.4
Unemployment	222.8	213.5	6.2	-9.3	-22.3	-33.3	-4.2	-9.5	-13.5
Participation rate	65.9	65.9	0.2	0.0	0.1	-0.4
Unemployment rate	6.4	6.1	0.2	-0.3	-0.7	-1.0
Employment rate	61.7	61.9	0.2	0.2	0.6	0.3
Hamilton, Ontario									
Population	659.0	659.9	...	0.9	6.5	8.5	0.1	1.0	1.3
Labour force	446.6	450.8	3.3	4.2	27.7	40.9	0.9	6.5	10.0
Employment	426.0	431.8	3.4	5.8	33.2	47.9	1.4	8.3	12.5
Unemployment	20.6	19.0	1.5	-1.6	-5.5	-7.0	-7.8	-22.4	-26.9
Participation rate	67.8	68.3	0.5	0.5	3.5	5.4
Unemployment rate	4.6	4.2	0.3	-0.4	-1.6	-2.1
Employment rate	64.6	65.4	0.5	0.8	4.4	6.5
St. Catharines-Niagara, Ontario									
Population	348.2	348.5	...	0.3	2.4	3.0	0.1	0.7	0.9
Labour force	214.1	211.1	2.1	-3.0	-8.6	-5.6	-1.4	-3.9	-2.6
Employment	200.1	197.7	2.2	-2.4	-7.9	-5.9	-1.2	-3.8	-2.9
Unemployment	14.0	13.4	0.9	-0.6	-0.7	0.4	-4.3	-5.0	3.1
Participation rate	61.5	60.6	0.6	-0.9	-2.9	-2.1
Unemployment rate	6.5	6.3	0.4	-0.2	-0.1	0.3
Employment rate	57.5	56.7	0.6	-0.8	-2.7	-2.2
Kitchener-Cambridge-Waterloo, Ontario									
Population	432.1	432.7	...	0.6	4.5	5.7	0.1	1.1	1.3
Labour force	308.9	307.0	2.3	-1.9	13.2	12.3	-0.6	4.5	4.2
Employment	295.2	293.2	2.4	-2.0	14.1	13.7	-0.7	5.1	4.9
Unemployment	13.7	13.8	1.1	0.1	-0.9	-1.5	0.7	-6.1	-9.8
Participation rate	71.5	70.9	0.5	-0.6	2.3	1.9
Unemployment rate	4.4	4.5	0.3	0.1	-0.5	-0.7
Employment rate	68.3	67.8	0.6	-0.5	2.6	2.3
Brantford, Ontario									
Population	114.7	114.8	...	0.1	1.1	1.5	0.1	1.0	1.3
Labour force	73.6	75.0	0.8	1.4	-2.2	1.3	1.9	-2.8	1.8
Employment	69.7	70.9	0.9	1.2	-2.7	1.7	1.7	-3.7	2.5
Unemployment	3.9	4.1	0.3	0.2	0.5	-0.4	5.1	13.9	-8.9
Participation rate	64.2	65.3	0.7	1.1	-2.6	0.3
Unemployment rate	5.3	5.5	0.5	0.2	0.8	-0.6
Employment rate	60.8	61.8	0.8	1.0	-2.9	0.7
Guelph, Ontario									
Population	132.7	132.9	...	0.2	1.7	2.2	0.2	1.3	1.7
Labour force	96.9	97.1	1.2	0.2	1.8	5.3	0.2	1.9	5.8
Employment	92.3	91.5	1.3	-0.8	0.5	4.0	-0.9	0.5	4.6
Unemployment	4.6	5.6	0.5	1.0	1.4	1.2	21.7	33.3	27.3
Participation rate	73.0	73.1	0.9	0.1	0.5	2.9
Unemployment rate	4.7	5.8	0.5	1.1	1.4	1.0
Employment rate	69.6	68.8	1.0	-0.8	-0.6	1.9

Table 5-1
Labour force characteristics by census metropolitan area (seasonally adjusted) — three-month moving average

	August 2017	September 2017	S.E. ¹	Change from			Percent change from		
				last month	last December	twelve months ago	last month	last December	twelve months ago
in thousands (except rates)				percent					
London, Ontario									
Population	431.8	432.5	...	0.7	4.4	5.4	0.2	1.0	1.3
Labour force	257.6	254.6	2.5	-3.0	-4.7	-9.3	-1.2	-1.8	-3.5
Employment	243.7	240.7	2.5	-3.0	-0.5	-4.9	-1.2	-0.2	-2.0
Unemployment	13.9	13.9	1.1	0.0	-4.1	-4.4	0.0	-22.8	-24.0
Participation rate	59.7	58.9	0.6	-0.8	-1.7	-2.9
Unemployment rate	5.4	5.5	0.4	0.1	-1.4	-1.4
Employment rate	56.4	55.7	0.6	-0.7	-0.6	-1.8
Windsor, Ontario									
Population	285.5	285.9	...	0.4	2.7	3.4	0.1	1.0	1.2
Labour force	174.1	174.4	1.7	0.3	3.0	-2.9	0.2	1.8	-1.6
Employment	163.4	164.1	1.7	0.7	2.3	-3.3	0.4	1.4	-2.0
Unemployment	10.8	10.2	0.8	-0.6	0.5	0.3	-5.6	5.2	3.0
Participation rate	61.0	61.0	0.6	0.0	0.5	-1.8
Unemployment rate	6.2	5.8	0.4	-0.4	0.1	0.2
Employment rate	57.2	57.4	0.6	0.2	0.3	-1.9
Barrie, Ontario									
Population	173.1	173.4	...	0.3	2.2	2.9	0.2	1.3	1.7
Labour force	125.4	125.4	1.8	0.0	15.0	14.6	0.0	13.6	13.2
Employment	117.1	117.8	2.0	0.7	15.6	16.4	0.6	15.3	16.2
Unemployment	8.3	7.5	0.8	-0.8	-0.7	-1.9	-9.6	-8.5	-20.2
Participation rate	72.4	72.3	1.0	-0.1	7.8	7.3
Unemployment rate	6.6	6.0	0.7	-0.6	-1.4	-2.5
Employment rate	67.6	67.9	1.2	0.3	8.2	8.4
Greater Sudbury, Ontario									
Population	140.4	140.5	...	0.1	0.2	0.2	0.1	0.1	0.1
Labour force	87.1	86.7	0.8	-0.4	-3.1	-2.9	-0.5	-3.5	-3.2
Employment	81.5	81.6	0.8	0.1	-0.7	-1.6	0.1	-0.9	-1.9
Unemployment	5.6	5.2	0.4	-0.4	-2.3	-1.2	-7.1	-30.7	-18.8
Participation rate	62.0	61.7	0.6	-0.3	-2.3	-2.2
Unemployment rate	6.4	6.0	0.4	-0.4	-2.4	-1.1
Employment rate	58.0	58.1	0.6	0.1	-0.6	-1.2
Thunder Bay, Ontario									
Population	104.8	104.8	...	0.0	0.0	0.1	0.0	0.0	0.1
Labour force	66.1	66.2	0.7	0.1	2.9	2.2	0.2	4.6	3.4
Employment	62.8	62.9	0.6	0.1	3.5	2.6	0.2	5.9	4.3
Unemployment	3.4	3.3	0.3	-0.1	-0.6	-0.4	-2.9	-15.4	-10.8
Participation rate	63.1	63.2	0.6	0.1	2.8	2.1
Unemployment rate	5.1	5.0	0.4	-0.1	-1.2	-0.8
Employment rate	59.9	60.0	0.6	0.1	3.3	2.4
Winnipeg, Manitoba									
Population	675.8	676.8	...	1.0	9.8	11.9	0.1	1.5	1.8
Labour force	460.8	460.4	1.3	-0.4	3.1	6.0	-0.1	0.7	1.3
Employment	435.8	435.2	1.4	-0.6	9.5	10.9	-0.1	2.2	2.6
Unemployment	25.1	25.2	0.8	0.1	-6.4	-5.0	0.4	-20.3	-16.6
Participation rate	68.2	68.0	0.2	-0.2	-0.6	-0.3
Unemployment rate	5.4	5.5	0.2	0.1	-1.4	-1.1
Employment rate	64.5	64.3	0.2	-0.2	0.5	0.5
Regina, Saskatchewan									
Population	205.2	205.4	...	0.2	2.7	3.3	0.1	1.3	1.6
Labour force	147.4	147.8	0.8	0.4	0.4	0.8	0.3	0.3	0.5
Employment	139.1	139.4	0.9	0.3	0.0	0.1	0.2	0.0	0.1
Unemployment	8.3	8.4	0.4	0.1	0.4	0.8	1.2	5.0	10.5
Participation rate	71.8	72.0	0.4	0.2	-0.7	-0.7
Unemployment rate	5.6	5.7	0.3	0.1	0.3	0.5
Employment rate	67.8	67.9	0.4	0.1	-0.9	-1.0

Table 5-1
Labour force characteristics by census metropolitan area (seasonally adjusted) — three-month moving average

	August 2017	September 2017	S.E. ¹	Change from			Percent change from		
				last month	last December	twelve months ago	last month	last December	twelve months ago
				in thousands (except rates)			percent		
Saskatoon, Saskatchewan									
Population	263.7	264.2	...	0.5	4.7	5.6	0.2	1.8	2.2
Labour force	186.6	186.9	1.0	0.3	2.9	5.0	0.2	1.6	2.7
Employment	171.2	172.1	1.1	0.9	2.0	2.9	0.5	1.2	1.7
Unemployment	15.4	14.8	0.6	-0.6	1.0	2.1	-3.9	7.2	16.5
Participation rate	70.8	70.7	0.4	-0.1	-0.2	0.4
Unemployment rate	8.3	7.9	0.3	-0.4	0.4	0.9
Employment rate	64.9	65.1	0.4	0.2	-0.4	-0.3
Calgary, Alberta									
Population	1,223.4	1,224.9	...	1.5	14.6	17.5	0.1	1.2	1.4
Labour force	915.0	910.9	4.0	-4.1	3.7	23.5	-0.4	0.4	2.6
Employment	837.3	833.5	4.3	-3.8	17.8	31.5	-0.5	2.2	3.9
Unemployment	77.7	77.4	2.8	-0.3	-14.1	-8.1	-0.4	-15.4	-9.5
Participation rate	74.8	74.4	0.3	-0.4	-0.6	0.9
Unemployment rate	8.5	8.5	0.3	0.0	-1.6	-1.1
Employment rate	68.4	68.0	0.4	-0.4	0.6	1.6
Edmonton, Alberta									
Population	1,139.8	1,141.4	...	1.6	14.0	16.6	0.1	1.2	1.5
Labour force	832.9	835.8	3.9	2.9	28.2	23.1	0.3	3.5	2.8
Employment	760.3	764.5	4.2	4.2	17.2	14.2	0.6	2.3	1.9
Unemployment	72.5	71.3	2.5	-1.2	11.0	8.9	-1.7	18.2	14.3
Participation rate	73.1	73.2	0.3	0.1	1.6	0.9
Unemployment rate	8.7	8.5	0.3	-0.2	1.0	0.8
Employment rate	66.7	67.0	0.4	0.3	0.7	0.3
Kelowna, British Columbia									
Population	159.5	159.8	...	0.3	2.7	3.5	0.2	1.7	2.2
Labour force	107.1	108.0	1.3	0.9	5.2	11.4	0.8	5.1	11.8
Employment	102.2	102.2	1.3	0.0	8.3	12.8	0.0	8.8	14.3
Unemployment	4.9	5.8	0.6	0.9	-3.1	-1.4	18.4	-34.8	-19.4
Participation rate	67.1	67.6	0.9	0.5	2.2	5.8
Unemployment rate	4.6	5.4	0.6	0.8	-3.3	-2.1
Employment rate	64.1	64.0	0.8	-0.1	4.2	6.8
Abbotsford-Mission, British Columbia									
Population	150.2	150.5	...	0.3	2.1	2.6	0.2	1.4	1.8
Labour force	99.0	99.3	0.9	0.3	-0.7	0.5	0.3	-0.7	0.5
Employment	93.5	93.8	0.9	0.3	-0.3	1.0	0.3	-0.3	1.1
Unemployment	5.5	5.5	0.4	0.0	-0.4	-0.5	0.0	-6.8	-8.3
Participation rate	65.9	66.0	0.6	0.1	-1.4	-0.8
Unemployment rate	5.6	5.5	0.4	-0.1	-0.4	-0.6
Employment rate	62.3	62.3	0.6	0.0	-1.1	-0.4
Vancouver, British Columbia									
Population	2,197.7	2,200.3	...	2.6	23.1	29.7	0.1	1.1	1.4
Labour force	1,482.8	1,477.0	5.9	-5.8	44.7	33.3	-0.4	3.1	2.3
Employment	1,413.2	1,410.2	6.0	-3.0	50.8	37.6	-0.2	3.7	2.7
Unemployment	69.6	66.9	3.0	-2.7	-6.0	-4.1	-3.9	-8.2	-5.8
Participation rate	67.5	67.1	0.3	-0.4	1.3	0.6
Unemployment rate	4.7	4.5	0.2	-0.2	-0.6	-0.4
Employment rate	64.3	64.1	0.3	-0.2	1.7	0.9
Victoria, British Columbia									
Population	311.1	311.5	...	0.4	2.9	3.7	0.1	0.9	1.2
Labour force	200.8	201.9	1.8	1.1	5.4	5.8	0.5	2.7	3.0
Employment	191.5	192.8	1.8	1.3	6.2	5.8	0.7	3.3	3.1
Unemployment	9.3	9.1	0.6	-0.2	-0.8	-0.1	-2.2	-8.1	-1.1
Participation rate	64.5	64.8	0.6	0.3	1.1	1.1
Unemployment rate	4.6	4.5	0.3	-0.1	-0.5	-0.2
Employment rate	61.6	61.9	0.6	0.3	1.4	1.1

1. Average standard error of change in two consecutive months (see "Sampling Errors" in the Data Quality section for further explanations).

Note: Estimates in this table are based on 2011 Census boundaries. Related CANSIM table 282-0135. The sum of individual categories may not always add to the total due to rounding.

Table 5-2
Labour force characteristics by census metropolitan area (seasonally adjusted) — Monthly

	August 2017	September 2017	S.E. ¹	Change from			Percent change from		
				last month	last December	twelve months ago	last month	last December	twelve months ago
				in thousands (except rates)			percent		
Montréal, Quebec									
Population	3,426.5	3,429.0	...	2.5	26.8	32.8	0.1	0.8	1.0
Labour force	2,297.2	2,307.3	16.9	10.1	25.4	36.2	0.4	1.1	1.6
Employment	2,145.4	2,150.7	17.1	5.3	23.5	41.9	0.2	1.1	2.0
Unemployment	151.8	156.6	11.4	4.8	1.9	-5.8	3.2	1.2	-3.6
Participation rate	67.0	67.3	0.5	0.3	0.2	0.4
Unemployment rate	6.6	6.8	0.5	0.2	0.0	-0.4
Employment rate	62.6	62.7	0.5	0.1	0.2	0.6
Toronto, Ontario									
Population	5,312.1	5,321.5	...	9.4	82.8	104.1	0.2	1.6	2.0
Labour force	3,482.5	3,515.5	22.0	33.0	61.1	52.2	0.9	1.8	1.5
Employment	3,288.0	3,310.6	21.5	22.6	98.6	99.7	0.7	3.1	3.1
Unemployment	194.6	204.9	14.3	10.3	-37.5	-47.6	5.3	-15.5	-18.9
Participation rate	65.6	66.1	0.4	0.5	0.2	-0.3
Unemployment rate	5.6	5.8	0.4	0.2	-1.2	-1.5
Employment rate	61.9	62.2	0.4	0.3	0.9	0.7
Vancouver, British Columbia									
Population	2,200.4	2,202.5	...	2.1	23.5	29.2	0.1	1.1	1.3
Labour force	1,470.8	1,471.8	11.9	1.0	41.9	36.1	0.1	2.9	2.5
Employment	1,406.5	1,409.9	11.8	3.4	48.5	43.0	0.2	3.6	3.1
Unemployment	64.4	61.9	7.5	-2.5	-6.6	-6.9	-3.9	-9.6	-10.0
Participation rate	66.8	66.8	0.5	0.0	1.2	0.7
Unemployment rate	4.4	4.2	0.5	-0.2	-0.6	-0.6
Employment rate	63.9	64.0	0.5	0.1	1.5	1.1

1. Average standard error of change in two consecutive months (see "Sampling Errors" in the **Data Quality** section for further explanations).

Note: Estimates in this table are based on 2011 Census boundaries. Related CANSIM table 282-0136. The sum of individual categories may not always add to the total due to rounding.

Table 6-1
Labour force characteristics — by province and economic region,¹ unadjusted for seasonality, three-month moving average ending in September 2016 and September 2017

	Population	Labour force ²	Employment	Unemployment	Participation rate	Unemployment rate	Employment rate
	in thousands				percent		
Canada							
2016	29,637.1	19,658.6	18,270.1	1,388.4	66.3	7.1	61.6
2017	29,952.1	19,889.5	18,632.9	1,256.6	66.4	6.3	62.2
Newfoundland and Labrador							
2016	444.7	275.9	244.1	31.7	62.0	11.5	54.9
2017	445.7	265.7	229.8	35.9	59.6	13.5	51.6
Avalon Peninsula [1010]							
2016	235.5	159.0	143.2	15.8	67.5	9.9	60.8
2017	237.6	146.2	130.1	16.1	61.5	11.0	54.8
South Coast-Burin Peninsula and Notre Dame-Central Bonavista Bay [1020, 1040]							
2016	122.1	65.3	56.7	8.6	53.5	13.2	46.4
2017	121.4	65.9	53.8	12.1	54.3	18.4	44.3
West Coast-Northern Peninsula-Labrador [1030]							
2016	87.1	51.5	44.2	7.3	59.1	14.2	50.7
2017	86.6	53.6	46.0	7.6	61.9	14.2	53.1
Prince Edward Island							
2016	122.1	82.6	75.3	7.3	67.6	8.8	61.7
2017	124.1	84.1	77.4	6.7	67.8	8.0	62.4
Nova Scotia							
2016	789.2	494.2	455.3	38.9	62.6	7.9	57.7
2017	793.1	498.1	457.1	41.0	62.8	8.2	57.6
Cape Breton [1210]							
2016	105.9	58.2	50.7	7.5	55.0	12.9	47.9
2017	105.1	55.9	48.2	7.7	53.2	13.8	45.9
North Shore [1220]							
2016	128.2	77.0	70.3	6.6	60.1	8.6	54.8
2017	127.7	76.8	70.2	6.6	60.1	8.6	55.0
Annapolis Valley [1230]							
2016	102.7	61.4	57.2	4.2	59.8	6.8	55.7
2017	102.9	68.1	63.6	4.5	66.2	6.6	61.8
Southern [1240]							
2016	97.8	54.5	47.3	7.1	55.7	13.0	48.4
2017	97.5	53.1	48.1	5.0	54.5	9.4	49.3
Halifax [1250]							
2016	354.6	243.2	229.7	13.5	68.6	5.6	64.8
2017	360.0	244.2	227.0	17.2	67.8	7.0	63.1
New Brunswick							
2016	623.6	400.4	365.8	34.5	64.2	8.6	58.7
2017	625.0	390.3	363.6	26.7	62.4	6.8	58.2
Campbellton-Miramichi [1310]							
2016	128.3	71.3	61.4	9.9	55.6	13.9	47.9
2017	127.7	72.2	64.2	8.0	56.5	11.1	50.3
Moncton-Richibucto [1320]							
2016	178.6	120.3	110.6	9.7	67.4	8.1	61.9
2017	180.2	116.7	109.7	7.0	64.8	6.0	60.9
Saint John-St. Stephen [1330]							
2016	141.9	92.6	85.4	7.2	65.3	7.8	60.2
2017	141.9	92.6	86.9	5.8	65.3	6.3	61.2
Fredericton-Oromocto [1340]							
2016	111.2	75.1	70.1	5.0	67.5	6.7	63.0
2017	112.0	69.2	65.5	3.6	61.8	5.2	58.5
Edmundston-Woodstock [1350]							
2016	63.5	41.1	38.3	2.7	64.7	6.6	60.3
2017	63.1	39.6	37.3	2.3	62.8	5.8	59.1
Quebec							
2016	6,896.4	4,504.7	4,196.8	307.9	65.3	6.8	60.9
2017	6,939.9	4,558.2	4,287.5	270.6	65.7	5.9	61.8

Table 6-1
Labour force characteristics — by province and economic region,¹ unadjusted for seasonality, three-month moving average ending in September 2016 and September 2017

	Population	Labour force ²	Employment	Unemployment	Participation rate	Unemployment rate	Employment rate
	in thousands				percent		
Gaspésie-Îles-de-la-Madeleine [2410]							
2016	77.2	42.4	38.6	3.9	54.9	9.2	50.0
2017	76.6	44.1	40.1	4.0	57.6	9.1	52.3
Bas-Saint-Laurent [2415]							
2016	169.2	93.9	87.7	6.3	55.5	6.7	51.8
2017	168.5	87.5	82.7	4.8	51.9	5.5	49.1
Capitale-Nationale [2420]							
2016	622.5	432.9	411.9	21.0	69.5	4.9	66.2
2017	625.9	422.0	404.6	17.3	67.4	4.1	64.6
Chaudière-Appalaches [2425]							
2016	350.1	229.9	218.2	11.7	65.7	5.1	62.3
2017	351.3	219.7	213.2	6.5	62.5	3.0	60.7
Estrie [2430]							
2016	271.2	162.9	153.2	9.6	60.1	5.9	56.5
2017	272.7	167.3	160.3	7.0	61.3	4.2	58.8
Centre-du-Québec [2433]							
2016	201.3	135.8	129.9	5.9	67.5	4.3	64.5
2017	202.2	133.0	125.2	7.8	65.8	5.9	61.9
Montérégie [2435]							
2016	1,261.6	815.1	766.9	48.2	64.6	5.9	60.8
2017	1,270.5	852.9	817.8	35.1	67.1	4.1	64.4
Montréal [2440]							
2016	1,683.5	1,130.6	1,022.8	107.8	67.2	9.5	60.8
2017	1,699.2	1,147.3	1,050.0	97.3	67.5	8.5	61.8
Laval [2445]							
2016	355.6	236.9	219.4	17.5	66.6	7.4	61.7
2017	359.0	243.5	224.2	19.3	67.8	7.9	62.5
Lanaudière [2450]							
2016	415.2	270.5	254.2	16.3	65.1	6.0	61.2
2017	418.2	283.1	268.3	14.8	67.7	5.2	64.2
Laurentides [2455]							
2016	499.1	331.5	311.5	20.0	66.4	6.0	62.4
2017	505.1	327.3	305.8	21.5	64.8	6.6	60.5
Outaouais [2460]							
2016	320.7	216.6	200.0	16.6	67.5	7.7	62.4
2017	322.7	214.3	201.6	12.7	66.4	5.9	62.5
Abitibi-Témiscamingue [2465]							
2016	120.6	78.1	73.6	4.5	64.8	5.8	61.0
2017	120.4	80.5	76.4	4.1	66.9	5.1	63.5
Mauricie [2470]							
2016	225.4	128.7	121.7	6.9	57.1	5.4	54.0
2017	225.4	134.9	127.2	7.7	59.8	5.7	56.4
Saguenay-Lac-Saint-Jean [2475]							
2016	231.5	138.6	130.8	7.8	59.9	5.6	56.5
2017	230.9	143.2	135.3	7.8	62.0	5.4	58.6
Côte-Nord and Nord-du-Québec [2480, 2490]							
2016	91.7	60.5	56.5	3.9	66.0	6.4	61.6
2017	91.2	57.8	54.8	3.0	63.4	5.2	60.1
Ontario							
2016	11,545.0	7,559.8	7,037.0	522.8	65.5	6.9	61.0
2017	11,708.4	7,659.0	7,197.0	461.9	65.4	6.0	61.5
Ottawa [3510]							
2016	1,110.1	742.9	693.5	49.3	66.9	6.6	62.5
2017	1,124.0	733.6	686.5	47.1	65.3	6.4	61.1
Kingston-Pembroke [3515]							
2016	378.9	231.5	217.8	13.8	61.1	6.0	57.5
2017	380.9	222.6	207.3	15.2	58.4	6.8	54.4
Muskoka-Kawartha [3520]							
2016	328.5	177.3	164.5	12.7	54.0	7.2	50.1
2017	331.0	193.5	182.7	10.8	58.5	5.6	55.2

Table 6-1
Labour force characteristics — by province and economic region,¹ unadjusted for seasonality, three-month moving average ending in September 2016 and September 2017

	Population	Labour force ²	Employment	Unemployment	Participation rate	Unemployment rate	Employment rate
	in thousands				percent		
Toronto [3530]							
2016	5,461.3	3,673.9	3,393.4	280.5	67.3	7.6	62.1
2017	5,564.0	3,704.7	3,466.2	238.4	66.6	6.4	62.3
Kitchener-Waterloo-Barrie [3540]							
2016	1,094.3	743.5	702.4	41.2	67.9	5.5	64.2
2017	1,112.1	783.7	744.4	39.3	70.5	5.0	66.9
Hamilton-Niagara Peninsula [3550]							
2016	1,212.7	773.3	723.3	50.0	63.8	6.5	59.6
2017	1,227.7	809.6	768.8	40.7	65.9	5.0	62.6
London [3560]							
2016	559.1	357.1	334.1	23.0	63.9	6.4	59.8
2017	565.6	344.8	325.7	19.1	61.0	5.5	57.6
Windsor-Sarnia [3570]							
2016	525.9	328.2	307.1	21.1	62.4	6.4	58.4
2017	528.8	326.8	306.4	20.4	61.8	6.2	57.9
Stratford-Bruce Peninsula [3580]							
2016	246.3	153.1	146.3	6.8	62.2	4.4	59.4
2017	246.9	156.7	150.7	6.0	63.5	3.8	61.0
Northeast [3590]							
2016	456.2	271.3	253.7	17.7	59.5	6.5	55.6
2017	455.4	271.5	252.4	19.2	59.6	7.1	55.4
Northwest [3595]							
2016	171.8	107.6	100.9	6.7	62.6	6.2	58.7
2017	172.1	111.6	105.9	5.7	64.8	5.1	61.5
Manitoba							
2016	1,001.2	683.9	637.7	46.3	68.3	6.8	63.7
2017	1,015.7	690.9	652.1	38.8	68.0	5.6	64.2
Southeast [4610]							
2016	91.3	63.3	60.3	2.9	69.3	4.6	66.0
2017	93.2	65.8	63.6	2.2	70.6	3.3	68.2
South Central and North Central [4620, 4640]							
2016	85.6	57.3	54.2	3.2	66.9	5.6	63.3
2017	86.6	60.4	58.0	2.4	69.7	4.0	67.0
Southwest [4630]							
2016	88.6	58.2	55.3	3.0	65.7	5.2	62.4
2017	89.5	59.7	56.2	3.5	66.7	5.9	62.8
Winnipeg [4650]							
2016	604.7	415.5	383.6	31.9	68.7	7.7	63.4
2017	615.2	419.5	392.5	27.0	68.2	6.4	63.8
Interlake [4660]							
2016	75.6	50.8	47.4	3.4	67.2	6.7	62.7
2017	76.1	48.6	46.6	2.0	63.9	4.1	61.2
Parklands and North [4670, 4680]							
2016	55.4	38.8	36.9	1.9	70.0	4.9	66.6
2017	55.2	36.9	35.2	1.7	66.8	4.6	63.8
Saskatchewan							
2016	870.5	613.6	574.7	38.9	70.5	6.3	66.0
2017	878.1	611.5	573.1	38.4	69.6	6.3	65.3
Regina-Moose Mountain [4710]							
2016	266.8	194.9	185.0	9.9	73.1	5.1	69.3
2017	269.8	192.7	182.6	10.1	71.4	5.2	67.7
Swift Current-Moose Jaw [4720]							
2016	82.0	55.7	53.3	2.3	67.9	4.1	65.0
2017	81.6	52.2	50.2	2.0	64.0	3.8	61.5
Saskatoon-Biggar [4730]							
2016	300.9	213.4	199.4	14.0	70.9	6.6	66.3
2017	306.2	220.4	204.3	16.1	72.0	7.3	66.7
Yorkton-Melville [4740]							
2016	61.8	40.1	37.4	2.7	64.9	6.7	60.5
2017	60.9	41.7	39.7	2.0	68.5	4.8	65.2

Table 6-1
Labour force characteristics — by province and economic region,¹ unadjusted for seasonality, three-month moving average ending in September 2016 and September 2017

	Population	Labour force ²	Employment	Unemployment	Participation rate	Unemployment rate	Employment rate
	in thousands				percent		
Prince Albert and Northern [4750, 4760]							
2016	159.0	109.6	99.6	10.0	68.9	9.1	62.6
2017	159.6	104.5	96.3	8.2	65.5	7.8	60.3
Alberta							
2016	3,405.1	2,485.4	2,272.6	212.8	73.0	8.6	66.7
2017	3,434.1	2,497.2	2,297.2	200.0	72.7	8.0	66.9
Lethbridge-Medicine Hat [4810]							
2016	230.3	162.7	151.8	10.9	70.6	6.7	65.9
2017	229.9	150.3	142.6	7.7	65.4	5.1	62.0
Camrose-Drumheller [4820]							
2016	161.4	113.3	103.9	9.5	70.2	8.4	64.4
2017	160.0	108.1	99.4	8.7	67.6	8.0	62.1
Calgary [4830]							
2016	1,293.4	960.4	867.4	92.9	74.3	9.7	67.1
2017	1,310.9	974.5	890.7	83.8	74.3	8.6	67.9
Banff-Jasper-Rocky Mountain House and Athabasca-Grande Prairie-Peace River [4840, 4870]							
2016	277.0	196.3	183.4	12.9	70.9	6.6	66.2
2017	275.6	195.0	183.8	11.3	70.8	5.8	66.7
Red Deer [4850]							
2016	172.6	125.0	114.1	10.9	72.4	8.7	66.1
2017	173.4	121.0	114.0	6.9	69.8	5.7	65.7
Edmonton [4860]							
2016	1,151.9	837.5	770.2	67.3	72.7	8.0	66.9
2017	1,167.1	856.9	781.9	74.9	73.4	8.7	67.0
Wood Buffalo-Cold Lake [4880]							
2016
2017	117.2	91.5	84.7	6.7	78.1	7.3	72.3
British Columbia							
2016	3,939.3	2,558.1	2,410.6	147.4	64.9	5.8	61.2
2017	3,987.9	2,634.7	2,498.1	136.6	66.1	5.2	62.6
Vancouver Island and Coast [5910]							
2016	663.2	391.6	370.4	21.2	59.0	5.4	55.9
2017	670.3	414.4	392.8	21.6	61.8	5.2	58.6
Lower Mainland-Southwest [5920]							
2016	2,464.8	1,651.7	1,563.7	88.0	67.0	5.3	63.4
2017	2,500.2	1,681.7	1,603.7	78.0	67.3	4.6	64.1
Thompson-Okanagan [5930]							
2016	437.4	268.6	250.5	18.1	61.4	6.7	57.3
2017	442.7	286.8	266.3	20.4	64.8	7.1	60.2
Kootenay [5940]							
2016	122.5	71.4	65.3	6.1	58.3	8.5	53.3
2017	123.0	76.3	70.1	6.2	62.0	8.1	57.0
Cariboo [5950]							
2016	127.9	86.1	79.6	6.4	67.3	7.4	62.2
2017	128.1	88.8	83.3	5.6	69.3	6.3	65.0
North Coast and Nechako [5960, 5970]							
2016	67.0	46.3	42.8	3.6	69.1	7.8	63.9
2017	67.1	46.3	43.7	2.6	69.0	5.6	65.1
Northeast [5980]							
2016	56.4	42.4	38.3	4.0	75.2	9.4	67.9
2017	56.5	40.3	38.2	2.1	71.3	5.2	67.6

1. For geographic descriptions of economic regions, refer to the Guide to the Labour Force Survey (71-543-G).

2. The labour force is composed of those members of the civilian non-institutional population 15 years of age and over who, during the reference week, were employed or unemployed.

Notes: Estimates in this table are based on 2011 Census boundaries. Related CANSIM table 282-0122. As a result of the wildfire affecting northern Alberta, LFS data for the census agglomeration of Wood Buffalo were not collected from May to July 2016. Data collection resumed in August 2016. Estimates for the economic region of Wood Buffalo-Cold Lake are not available for June, July, August, and September 2016.

Table 6-2
Labour force characteristics — by territory (seasonally adjusted) - three-month moving average

	August 2017	September 2017	S.E. ¹	Change from			Percent change from		
				last month	last December	twelve months ago	last month	last December	twelve months ago
				in thousands (except rates)			percent		
Yukon²									
Population	28.8	28.8	...	0.0	0.4	0.4	0.0	1.4	1.4
Labour force	21.5	21.4	0.2	-0.1	-0.5	-0.3	-0.5	-2.3	-1.4
Employment	21.0	20.7	0.2	-0.3	-0.2	0.4	-1.4	-1.0	2.0
Unemployment	0.5	0.7	0.1	0.2	-0.3	-0.8	40.0	-30.0	-53.3
Participation rate	74.7	74.3	0.7	-0.4	-2.8	-2.1
Unemployment rate	2.3	3.3	0.6	1.0	-1.3	-3.6
Employment rate	72.9	71.9	0.9	-1.0	-1.7	0.4
Northwest Territories³									
Population	32.3	32.3	...	0.0	-0.1	-0.3	0.0	-0.3	-0.9
Labour force	23.0	22.9	0.3	-0.1	-0.8	-1.3	-0.4	-3.4	-5.4
Employment	21.6	21.3	0.3	-0.3	-0.8	-1.3	-1.4	-3.6	-5.8
Unemployment	1.4	1.6	0.2	0.2	0.0	0.0	14.3	0.0	0.0
Participation rate	71.2	70.9	0.9	-0.3	-2.2	-3.3
Unemployment rate	6.1	7.0	0.7	0.9	0.2	0.4
Employment rate	66.9	65.9	0.9	-1.0	-2.3	-3.4
Nunavut⁴									
Population	24.3	24.4	...	0.1	0.2	0.1	0.4	0.8	0.4
Labour force	16.1	15.7	0.2	-0.4	0.0	-0.3	-2.5	0.0	-1.9
Employment	13.6	13.4	0.2	-0.2	-0.1	-0.3	-1.5	-0.7	-2.2
Unemployment	2.5	2.3	0.2	-0.2	0.1	0.0	-8.0	4.5	0.0
Participation rate	66.0	64.4	0.8	-1.6	-0.4	-1.5
Unemployment rate	15.6	14.9	0.9	-0.7	0.9	0.4
Employment rate	55.7	54.8	0.8	-0.9	-0.9	-1.5

1. Average standard error of change in two consecutive months (see "Sampling Errors" in the **Data Quality** section for further explanations).

2. Since 1992, the Labour force survey (LFS) has been conducted in the Yukon, using an alternative methodology that accommodates some of the operational difficulties inherent to remote locales. These estimates are not included in the national totals. In 1995, the LFS in the Yukon underwent a sample redesign. One result of the redesign was that the covered population increased from 85% to 92%, which is reflected by the sharp increase in the three month moving averages estimates of January, February and March of 1995 for all the level estimates. Users are therefore warned to be cautious when comparing estimates before January 1995 to estimates for January 1995 and forward.

3. Since 2001, the Labour force survey (LFS) has been administered in the Northwest Territories, using an alternative methodology that accommodates some of the operational difficulties inherent to remote locales. These estimates are not included in national totals.

4. Since 2004, the Labour force survey (LFS) has been administered in Nunavut, using an alternative methodology that accommodates some of the operational difficulties inherent to remote locales. These estimates are 3-month moving averages and are not included in national totals. From January 2004 to December 2007, estimates represent about 70% of all Nunavut residents aged 15 and over. Starting in January 2008, coverage was extended to 92%, so that by March 2008, the 3-month moving average is completely based on the extended coverage. Because of the large difference in coverage, users are recommended not to compare estimates prior to January 2008 with data afterwards. The January and February 2008 3-month moving average estimates are based on a mix of both coverages, since the extended coverage was introduced in January 2008. Estimates from January 2004 to December 2007 are based on the 10 largest communities in Nunavut: Iqaluit, Rankin Inlet, Cambridge Bay, Kugluktuk, Baker Lake, Arviat, Pond Inlet, Cape Dorset, Pangnirtung, Igloolik. Estimates from March 2008 to present cover the above communities as well as: Taloyoak, Gjoa Haven, Kugaaruk, Coral Harbour, Repulse Bay, Qikiqtarjuaq, Arctic Bay, Hall Beach, Clyde River.

Note: Related CANSIM table 282-0100.

Table 7
Average usual hours and wages of employees by selected characteristics, Canada, unadjusted for seasonality

	Employees			Full-time			Part-time			
	Average weekly hours	Average weekly wages	Average hourly wages	Average weekly hours	Average weekly wages	Average weekly hours	Average weekly wages			
	Number	Number	Number	Number	Number	Number	Number			
	thousands	current dollars	thousands	thousands	current dollars	thousands	current dollars			
September 2017										
15 years and over	15,655.8	35.5	966.98	26.36	12,877.2	39.3	1,103.00	2,778.6	17.6	336.59
15 to 24 years	2,279.2	27.2	446.56	15.35	1,145.2	38.7	685.63	1,134.0	15.6	205.12
25 years and over	13,376.6	36.9	1,055.65	28.24	11,732.0	39.4	1,143.75	1,644.7	19.0	427.23
Males	7,922.3	37.8	1,092.90	28.19	7,032.0	40.5	1,192.57	890.2	17.1	305.59
Females	7,733.6	33.0	837.99	24.50	5,845.2	37.9	995.26	1,888.4	17.8	351.20
Union coverage										
Union coverage	4,852.1	35.8	1,085.93	29.87	4,158.0	38.6	1,187.84	694.1	19.2	475.47
No union coverage	10,803.7	35.3	913.56	24.79	8,719.2	39.7	1,062.55	2,084.5	17.1	290.34
Job permanency										
Permanent	13,473.2	36.3	1,013.32	27.16	11,547.6	39.3	1,122.79	1,925.7	18.5	356.90
Temporary	2,182.6	30.3	680.90	21.47	1,329.7	39.6	931.19	852.9	15.7	290.73
Occupation										
Management occupations	1,048.6	39.8	1,693.69	42.76	1,024.3	40.2	1,718.71	24.3	19.5	638.86
Business, finance and administration occupations	2,666.0	35.6	946.47	26.25	2,311.1	38.3	1,030.55	355.0	17.9	399.06
Natural and applied sciences and related occupations	1,266.9	38.1	1,384.68	36.20	1,205.4	39.2	1,426.58	61.5	18.1	563.79
Health occupations	1,182.5	33.8	1,029.05	30.28	916.8	37.9	1,157.87	265.7	19.9	584.60
Occupations in education, law and social, community and government services	1,809.9	33.7	1,101.59	31.99	1,458.8	37.8	1,258.08	351.2	16.9	451.54
Occupations in art, culture, recreation and sport	300.3	32.0	822.62	24.43	220.5	38.7	1,028.50	79.8	13.3	253.90
Sales and service occupations	4,045.8	30.9	553.32	16.88	2,594.4	38.5	729.15	1,451.3	17.4	239.00
Trades, transport and equipment operators and related occupations	2,197.4	40.4	1,068.21	26.06	2,065.6	41.8	1,113.89	131.8	19.0	352.37
Natural resources, agriculture and related production occupations	312.2	41.8	1,018.97	23.50	282.1	44.6	1,102.28	30.2	15.4	240.51
Occupations in manufacturing and utilities	826.0	39.6	875.74	21.94	798.3	40.3	895.41	27.8	18.0	310.30
September 2016										
15 years and over	15,407.1	35.4	944.70	25.80	12,661.9	39.3	1,079.55	2,745.3	17.3	322.75
15 to 24 years	2,287.3	27.2	442.03	15.17	1,175.9	38.7	674.76	1,111.4	15.1	195.80
25 years and over	13,119.8	36.8	1,032.33	27.66	11,486.0	39.3	1,120.99	1,633.8	18.7	409.10
Males	7,780.9	37.8	1,067.85	27.54	6,891.6	40.5	1,167.08	889.3	16.9	298.89
Females	7,626.2	32.9	819.05	24.03	5,770.2	37.8	975.01	1,856.0	17.4	334.18
Union coverage										
Union coverage	4,752.7	35.8	1,075.96	29.67	4,075.0	38.6	1,176.85	677.7	19.1	469.27
No union coverage	10,654.4	35.2	886.15	24.08	8,586.8	39.6	1,033.37	2,067.6	16.7	274.72
Job permanency										
Permanent	13,323.7	36.3	990.37	26.58	11,437.0	39.2	1,096.42	1,886.7	18.2	347.50
Temporary	2,083.5	29.5	652.65	20.86	1,224.9	39.5	922.02	858.5	15.1	268.34
Occupation										
Management occupations	978.5	39.8	1,667.55	42.08	957.7	40.2	1,688.54	20.8	19.6	700.90
Business, finance and administration occupations	2,586.2	35.6	927.64	25.64	2,242.0	38.3	1,013.82	344.2	17.8	366.28
Natural and applied sciences and related occupations	1,186.0	38.6	1,374.66	35.69	1,142.3	39.3	1,403.92	43.7	18.9	610.11
Health occupations	1,131.3	33.5	983.84	29.23	865.3	37.7	1,111.99	266.0	19.9	567.05
Occupations in education, law and social, community and government services	1,859.1	33.9	1,112.97	32.17	1,496.1	38.0	1,269.38	363.0	17.0	468.40
Occupations in art, culture, recreation and sport	317.7	29.5	741.01	23.76	205.2	39.0	1,021.49	112.4	12.2	228.99

Table 7
Average usual hours and wages of employees by selected characteristics, Canada, unadjusted for seasonality

	Employees			Full-time			Part-time			
	Number	Average weekly hours	Average weekly wages	Average hourly wages	Number	Average weekly hours	Average weekly wages	Number	Average weekly hours	Average weekly wages
	thousands		current dollars		thousands		current dollars	thousands		current dollars
Sales and service occupations	4,007.2	30.8	536.28	16.40	2,603.6	38.3	704.99	1,403.6	16.9	223.34
Trades, transport and equipment operators and related occupations	2,221.6	40.3	1,048.75	25.66	2,094.3	41.7	1,092.46	127.3	18.3	329.91
Natural resources, agriculture and related production occupations	299.4	40.7	932.23	22.22	259.5	44.5	1,036.38	40.0	15.7	255.98
Occupations in manufacturing and utilities	820.0	39.7	876.02	21.87	796.0	40.4	894.56	24.1	16.8	262.21

Note: Related CANSIM table 282-0167.

Table 8
Regional unemployment rates used by the Employment Insurance program,¹ seasonally adjusted, three-month moving average

Region	Effective from October 8, 2017 to November 4, 2017 percent
Newfoundland and Labrador	
01. St. John's, Newfoundland and Labrador	8.9
02. Newfoundland and Labrador ²	19.9
Prince Edward Island³	
03. Charlottetown, Prince Edward Island	6.1
04. Prince Edward Island ⁴	13.9
Nova Scotia	
05. Eastern Nova Scotia	15.3
06. Western Nova Scotia	8.8
07. Halifax, Nova Scotia	7.3
New Brunswick	
08. Fredericton-Moncton-Saint John, New Brunswick	5.9
09. Madawaska-Charlotte, New Brunswick	6.7
10. Restigouche-Albert, New Brunswick	11.6
Quebec	
11. Gaspésie-Îles-de-la-Madeleine, Quebec	14.5
12. Quebec, Quebec	4.3
13. Trois-Rivières, Quebec	5.6
14. South Central Quebec	2.6
15. Sherbrooke, Quebec	4.9
16. Montérégie, Quebec	4.9
17. Montreal, Quebec	6.8
18. Central Quebec	6.8
19. North Western Quebec	8.4
20. Lower Saint Lawrence and North Shore, Quebec	7.7
21. Hull, Quebec	5.7
22. Chicoutimi-Jonquière, Quebec	6.8
Ontario	
23. Ottawa, Ontario	5.7
24. Eastern Ontario	7.4
25. Kingston, Ontario	5.4
26. Central Ontario	6.3
27. Oshawa, Ontario	4.9
28. Toronto, Ontario	5.9
29. Hamilton, Ontario	4.2
30. St. Catharines, Ontario	6.2
31. London, Ontario	5.2
32. Niagara, Ontario	7.3
33. Windsor, Ontario	6.2
34. Kitchener, Ontario	4.6
35. Huron, Ontario	6.8
36. South Central Ontario	4.3
37. Sudbury, Ontario	6.0
38. Thunder Bay, Ontario	4.9
39. Northern Ontario	11.9
Manitoba	
40. Winnipeg, Manitoba	5.5
41. Southern Manitoba	6.2
42. Northern Manitoba	31.3
Saskatchewan	
43. Regina, Saskatchewan	5.6
44. Saskatoon, Saskatchewan	8.0
45. Southern Saskatchewan	7.2
46. Northern Saskatchewan	18.9
Alberta	
47. Calgary, Alberta	8.6
48. Edmonton, Alberta	8.8
49. Northern Alberta	11.3
50. Southern Alberta	7.6

Table 8
Regional unemployment rates used by the Employment Insurance program,¹ seasonally adjusted, three-month moving average

Region	Effective from October 8, 2017 to November 4, 2017 percent
British Columbia	
51. Southern Interior British Columbia	9.0
52. Abbotsford, British Columbia	5.6
53. Vancouver, British Columbia	4.6
54. Victoria, British Columbia	5.4
55. Southern Coastal British Columbia	6.0
56. Northern British Columbia	9.9
Territories^{3,5}	
57. Whitehorse, Yukon ⁶	3.8
58. Yukon	7.5
59. Yellowknife, Northwest Territories	3.1
60. Northwest Territories ⁷	12.2
61. Iqaluit, Nunavut	8.6
62. Nunavut ⁸	18.3

1. The boundaries of these regions are determined by Employment and Social Development Canada (ESDC). For geographic descriptions and maps of employment insurance regions, see the ESDC website: <http://srv129.services.gc.ca/eiregions/en/geocont.aspx>.

2. This region excludes St. John's.

3. Prince Edward Island as well as the territories are each comprised of two regions effective October 12, 2014.

4. This region excludes Charlottetown.

5. The monthly regional unemployment rates for EI purposes in the territories are subject to the greater of a seasonally adjusted 3-month-moving average or 12-month-moving average.

6. This region excludes Whitehorse.

7. This region excludes Yellowknife.

8. This region excludes Iqaluit.

Note: Related CANSIM table 282-0168. All regions are based on the 1996 Census boundaries, with the exception of those in Prince Edward Island and in the territories, which respect the 2011 Census boundaries.

Data quality

Definitions and explanations

The **labour force** is composed of those members of the civilian non-institutional population 15 years of age and over who, during the reference week, were employed or unemployed.

Employed persons are those who, during the reference week:

- (a) did any work at all at a job or business;
- (b) had a job but were not at work.

A person is considered to be **full-time** if his/her usual hours at the main job are 30 or more hours per week. When the number of hours worked at the main job is usually less than 30 hours per week then he/she is considered to be **part-time**.

Unemployed persons are those who, during the reference week:

- (a) were without work, had actively looked for work in the past four weeks (ending with reference week) and were available for work;
- (b) had not actively looked for work in the past four weeks but were on temporary layoff and were available for work;
- (c) had not actively looked for work but had a new job to start within four weeks from the reference week and were available for work.

Persons in the civilian non-institutional population 15 years of age and over who, during the reference week, were neither employed nor unemployed are classified as **not in the labour force**.

The **unemployment rate** represents the number of unemployed persons expressed as a percentage of the labour force (employed and unemployed). The unemployment rate for a particular group (for example, age, sex, or marital status) is the number unemployed in that group expressed as a percentage of the labour force for that group.

The **participation rate** represents the total labour force expressed as a percentage of the population aged 15 years and over. The participation rate for a particular group (for example, women aged 25 years and over) is the labour force in that group expressed as a percentage of the population for that group.

The **employment rate** represents the number of employed persons expressed as a percentage of the population aged 15 years and over. The employment rate for a particular group (for example, age, sex, marital status, or province) is the number employed in that group expressed as a percentage of the population for that group.

The **part-time rate** represents the number of persons employed part-time expressed as a percentage of the employed. The part-time rate for a particular group (for example, age or sex) is the number of persons employed part-time in that group expressed as a percentage of the employed for that group.

All geographic regions are based on the 2011 Census boundaries.

Seasonal adjustment

Fluctuations in economic time series are caused by seasonal, cyclical and irregular movements. A seasonally adjusted series is one from which seasonal movements have been eliminated. Seasonal movements are defined as those which are caused by regular annual events such as climate, holidays, vacation periods and cycles related to crops, production and retail sales associated with Christmas and Easter. The seasonally adjusted series contains irregular as well as longer-term cyclical fluctuations.

The seasonally adjusted series are revised each year to take into account current data and to generate new forecast factors for the next twelve months. The data are therefore subject to slight revisions in future issues of this publication.

For more information on seasonal adjustment, see *Seasonally adjusted data – Frequently asked questions*.

Sampling variability of estimates

Estimates in this publication are based on the Labour Force Survey, a monthly survey of approximately 56,000 households across Canada. Because the entire population is not surveyed, the estimates are subject to sampling error. While the published estimate is the best available indicator of the real value, changes in the level of any estimates between two months can be the result of a true change, or sampling variability. The sampling error can be estimated by calculating the standard error for the published estimate or statistic. These standard errors have been included in the publication tables in order to assist users in interpreting the data. They are based on 12-month averages and are updated twice a year, in February and August.

Interpretation based on standard error

Approximately two-thirds (68%) of the time, a change greater than the sampling error indicates a real change. The larger the change compared to the standard error, the better the chance that we are observing a real change, as opposed to a change due to sampling variability. At the 95% confidence level, the change in the estimate must be greater than twice the standard error in order to ensure that change is real.

Movements in estimates that are smaller than the standard error are less likely to reflect a real change and more likely to be due to sampling variability. While the above is true for monthly movements, one can have more confidence in a series of consecutive movements in the same direction, even though some of the monthly movements may be smaller than the standard error.

Interpretation based on confidence intervals

Confidence intervals provide another way of looking at the variability inherent in estimates of sample surveys. To illustrate how to calculate the confidence interval, let us say that one month the published estimate for total employment rose by 16,000 to reach 18,000,000. The associated standard error for the movement estimate is 29,500. The standard error used to interpret the movement estimate indicates that:

- There are approximately two chances in three (68%) that the real value of the movement between the two months falls within the range -13,500 to +45,500 (16,000 + or - one standard error).
- There are approximately nine chances in ten (90%) that the real value of the movement between the two months falls within the range -31,200 to +63,200 (16,000 + or - 1.6 times the standard error).
- There are approximately nineteen chances in twenty (95%) that the real value of the movement between the two months falls within the range -43,000 to +75,000 (16,000 + or - two standard errors).

For more detailed explanations on the sampling variability of estimates, and in particular for information on how to assess the variability of level estimates, consult the **Data quality** section of the *Guide to the Labour Force Survey* (71-543-G).

Documentation

For more detailed information about the Labour Force Survey, see the following documents:

- Overview of the Labour Force Survey (LFS) 3701
- *Guide to the Labour Force Survey* (71-543-G)
- *Methodology of the Canadian Labour Force Survey* (71-526-X)
- *LFS geographical maps*

Related products

Publications

71-526-X	Methodology of the Canadian Labour Force Survey
71-543-G	Guide to the Labour Force Survey
71-587-X	Aboriginal Peoples Living Off-reserve in Western Canada: Estimates from the Labour Force Survey
71-588-X	The Aboriginal Labour Force Analysis Series
71-606-X	The Immigrant Labour Force Analysis Series
71F0031X	Improvements to the Labour Force Survey (LFS)
71M0001X	Labour Force Survey Microdata File
75-004-M	Labour Statistics: Research Papers
75-005-M	Labour Statistics: Technical Papers

CANSIM tables

279-0029	Work absence statistics of full-time employees by province, census and sex, annual
279-0030	Work absence statistics of full-time employees by sex and North American Industry Classification System (NAICS), annual
279-0032	Work absence statistics of full-time employees by sex and age group, annual
279-0033	Work absence statistics of full-time employees by sex and presence of children, annual
279-0034	Work absence statistics of full-time employees by sex and job tenure, annual
279-0035	Work absence statistics of full-time employees by sex and public and private sector, annual
279-0036	Work absence statistics of full-time employees by sex and educational attainment, annual
279-0037	Work absence statistics of full-time employees by sex and workplace size, annual
279-0038	Work absence statistics of full-time employees by sex and job status, annual
279-0039	Work absence statistics of full-time employees by sex and union coverage, annual
279-0040	Work absence statistics of full-time employees by sex and National Occupational Classification (NOC), annual
282-0001	Labour Force Survey estimates (LFS), by sex and detailed age group, unadjusted for seasonality, monthly
282-0002	Labour Force Survey estimates (LFS), by sex and detailed age group, annual
282-0003	Labour Force Survey estimates (LFS), by educational attainment, sex and age group, unadjusted for seasonality, monthly
282-0004	Labour Force Survey estimates (LFS), by educational attainment, sex and age group, annual
282-0005	Labour Force Survey estimates (LFS), by full- and part-time students during school months, sex and age group, unadjusted for seasonality, monthly
282-0006	Labour Force Survey estimates (LFS), by students during summer months, sex and age group, unadjusted for seasonality, monthly
282-0007	Labour Force Survey estimates (LFS), by North American Industry Classification System (NAICS), sex and age group, unadjusted for seasonality, monthly
282-0008	Labour Force Survey estimates (LFS), by North American Industry Classification System (NAICS), sex and age group, annual
282-0011	Labour Force Survey estimates (LFS), employment by class of worker, North American Industry Classification System (NAICS) and sex, unadjusted for seasonality, monthly
282-0012	Labour Force Survey estimates (LFS), employment by class of worker, North American Industry Classification System (NAICS) and sex, annual
282-0013	Labour Force Survey estimates (LFS), part-time employment by reason for part-time work, sex and age group, unadjusted for seasonality, monthly
282-0014	Labour Force Survey estimates (LFS), part-time employment by reason for part-time work, sex and age group, annual
282-0015	Labour Force Survey estimates (LFS), by usual hours worked, main or all jobs, sex and age group, unadjusted for seasonality, monthly
282-0016	Labour Force Survey estimates (LFS), by usual hours worked, main or all jobs, sex and age group, annual
282-0017	Labour Force Survey estimates (LFS), by actual hours worked, main or all jobs, sex and age group, unadjusted for seasonality, monthly
282-0018	Labour Force Survey estimates (LFS), by actual hours worked, main or all jobs, sex and age group, annual
282-0019	Labour Force Survey estimates (LFS), by usual hours worked, class of worker, North American Industry Classification System (NAICS) and sex, unadjusted for seasonality, monthly
282-0020	Labour Force Survey estimates (LFS), by usual hours worked, class of worker, North American Industry Classification System (NAICS) and sex, annual
282-0021	Labour Force Survey estimates (LFS), by actual hours worked, class of worker, North American Industry Classification System (NAICS) and sex, unadjusted for seasonality, monthly
282-0022	Labour Force Survey estimates (LFS), by actual hours worked, class of worker, North American Industry Classification System (NAICS) and sex, annual
282-0027	Labour Force Survey estimates (LFS), by total and average usual and actual hours worked, main or all jobs, type of work, sex and age group, unadjusted for seasonality, monthly
282-0028	Labour Force Survey estimates (LFS), by total and average usual and actual hours worked, main or all jobs, type of work, sex and age group, annual
282-0031	Labour Force Survey estimates (LFS), multiple jobholders by North American Industry Classification System (NAICS), sex and age group, annual
282-0032	Labour Force Survey estimates (LFS), multiple jobholders by North American Industry Classification System (NAICS), sex and age group, unadjusted for seasonality, monthly

CANSIM tables

282-0035	Labour Force Survey estimates (LFS), multiple jobholders by usual hours worked at main and all jobs, unadjusted for seasonality, monthly
282-0036	Labour Force Survey estimates (LFS), multiple jobholders by usual hours worked at main and all jobs, annual
282-0037	Labour Force Survey estimates (LFS), job tenure by type of work, sex and age group, unadjusted for seasonality, monthly
282-0038	Labour Force Survey estimates (LFS), job tenure by type of work, sex and age group, annual
282-0041	Labour Force Survey estimates (LFS), job tenure by North American Industry Classification System (NAICS) and sex, unadjusted for seasonality, monthly
282-0042	Labour Force Survey estimates (LFS), job tenure by North American Industry Classification System (NAICS) and sex, annual
282-0047	Labour Force Survey estimates (LFS), duration of unemployment by sex and age group, unadjusted for seasonality, monthly
282-0048	Labour Force Survey estimates (LFS), duration of unemployment by sex and age group, annual
282-0049	Labour Force Survey estimates (LFS), unemployment by type of work sought and search method, sex and age group, unadjusted for seasonality, monthly
282-0050	Labour Force Survey estimates (LFS), unemployment by type of work sought and search method, sex and age group, annual
282-0051	Labour Force Survey estimates (LFS), retirement age by class of worker and sex, annual
282-0071	Labour Force Survey estimates (LFS), wages of employees by type of work, North American Industry Classification System (NAICS), sex and age group, unadjusted for seasonality, monthly
282-0072	Labour Force Survey estimates (LFS), wages of employees by type of work, North American Industry Classification System (NAICS), sex and age group, annual
282-0073	Labour Force Survey estimates (LFS), wages of employees by job permanence, union coverage, sex and age group, unadjusted for seasonality, monthly
282-0074	Labour Force Survey estimates (LFS), wages of employees by job permanence, union coverage, sex and age group, annual
282-0075	Labour Force Survey estimates (LFS), employees by establishment size, North American Industry Classification System (NAICS), sex and age group, unadjusted for seasonality, monthly
282-0076	Labour Force Survey estimates (LFS), employees by establishment size, North American Industry Classification System (NAICS), sex and age group, annual
282-0077	Labour Force Survey estimates (LFS), employees by union coverage, North American Industry Classification System (NAICS), sex and age group, unadjusted for seasonality, monthly
282-0078	Labour Force Survey estimates (LFS), employees by union coverage, North American Industry Classification System (NAICS), sex and age group, annual
282-0079	Labour Force Survey estimates (LFS), employees by job permanency, North American Industry Classification System (NAICS), sex and age group, unadjusted for seasonality, monthly
282-0080	Labour Force Survey estimates (LFS), employees by job permanency, North American Industry Classification System (NAICS), sex and age group, annual
282-0083	Labour Force Survey estimates (LFS), employees working overtime (weekly) by North American Industry Classification System (NAICS), sex and age group, unadjusted for seasonality, monthly
282-0084	Labour Force Survey estimates (LFS), employees working overtime (weekly) by North American Industry Classification System (NAICS), sex and age group, annual
282-0085	Labour Force Survey estimates (LFS), supplementary unemployment rates by sex and age group, unadjusted for seasonality, monthly
282-0086	Labour Force Survey estimates (LFS), supplementary unemployment rates by sex and age group, annual
282-0087	Labour Force Survey estimates (LFS), by sex and age group, seasonally adjusted and unadjusted, monthly
282-0088	Labour Force Survey estimates (LFS), employment by North American Industry Classification System (NAICS), seasonally adjusted and unadjusted, monthly
282-0089	Labour Force Survey estimates (LFS), employment by class of worker and sex, seasonally adjusted and unadjusted, monthly
282-0092	Labour Force Survey estimates (LFS), actual hours worked at main job by North American Industry Classification System (NAICS), seasonally adjusted, monthly
282-0094	Labour Force Survey estimates (LFS), by North American Industry Classification System (NAICS), Canada, seasonally adjusted, monthly
282-0095	Labour Force Survey estimates (LFS), by full- and part-time students during school months, sex and age group, annual
282-0100	Labour Force Survey estimates (LFS), by territories, sex and age group, 3-month moving average, seasonally adjusted and unadjusted, monthly seasonally adjusted and unadjusted, monthly
282-0101	Labour Force Survey estimates (LFS), by immigrant status, age group, Canada, regions, provinces and Montreal, Toronto, Vancouver census metropolitan areas, 3-month moving average, unadjusted for seasonality, monthly
282-0102	Labour Force Survey estimates (LFS), by immigrant status, age group, Canada, regions, provinces and Montreal, Toronto, Vancouver census metropolitan areas, annual
282-0103	Labour Force Survey estimates (LFS), by immigrant status, sex and detailed age group, Canada, 3-month moving average, unadjusted for seasonality, monthly
282-0104	Labour Force Survey estimates (LFS), by immigrant status, sex and detailed age group, Canada, annual
282-0105	Labour Force Survey estimates (LFS), by immigrant status, educational attainment, sex and age group, Canada, 3-month moving average, unadjusted for seasonality, monthly
282-0106	Labour Force Survey estimates (LFS), by immigrant status, educational attainment, sex and age group, Canada, annual
282-0107	Labour Force Survey estimates (LFS), by immigrant status, country of birth, sex and age group, Canada, 3-month moving average, unadjusted for seasonality, monthly
282-0108	Labour Force Survey estimates (LFS), by immigrant status, country of birth, sex and age group, Canada, annual
282-0122	Labour Force Survey estimates (LFS), by provinces and economic regions based on 2011 Census boundaries, 3-month moving average, unadjusted for seasonality, monthly

CANSIM tables

282-0123	Labour Force Survey estimates (LFS), by provinces, territories and economic regions based on 2011 Census boundaries, annual
282-0124	Labour Force Survey estimates (LFS), employment by economic region based on 2011 Census boundaries and North American Industry Classification System (NAICS), 3-month moving average, unadjusted for seasonality, monthly
282-0125	Labour Force Survey estimates (LFS), employment by economic region based on 2011 Census boundaries and North American Industry Classification System (NAICS), annual
282-0128	Labour Force Survey estimates (LFS), by census metropolitan area based on 2011 Census boundaries, sex and age group, 3-month moving average, unadjusted for seasonality, monthly
282-0129	Labour Force Survey estimates (LFS), by census metropolitan area based on 2011 Census boundaries, sex and age group, annual
282-0130	Labour Force Survey estimates (LFS), employment by census metropolitan area based on 2011 Census boundaries and North American Industry Classification System (NAICS), 3-month moving average, unadjusted for seasonality, monthly
282-0131	Labour Force Survey estimates (LFS), employment by census metropolitan area based on 2011 Census boundaries and North American Industry Classification System (NAICS), annual
282-0134	Labour Force Survey estimates (LFS), by selected census agglomerations based on 2011 Census boundaries, annual
282-0135	Labour Force Survey estimates (LFS), by census metropolitan area based on 2011 Census boundaries, 3-month moving average, seasonally adjusted and unadjusted, monthly
282-0136	Labour Force Survey estimates (LFS), by Montréal, Toronto and Vancouver census metropolitan areas based on 2011 Census boundaries, seasonally adjusted and unadjusted, monthly
282-0137	Labour Force Survey estimates (LFS), by population centres and rural areas based on 2011 Census boundaries, sex and age group, unadjusted for seasonality, monthly
282-0138	Labour Force Survey estimates (LFS), by population centres and rural areas based on 2011 Census boundaries, sex and age group, annual
282-0139	Labour Force Survey estimates (LFS), employment by population centres and rural areas based on 2011 Census boundaries, class of worker and North American Industry Classification System (NAICS), unadjusted for seasonality, monthly
282-0140	Labour Force Survey estimates (LFS), employment by population centres and rural areas based on 2011 Census boundaries, class of worker and North American Industry Classification System (NAICS), annual
282-0141	Labour Force Survey estimates (LFS), by National Occupational Classification (NOC) and sex, unadjusted for seasonality, monthly
282-0142	Labour Force Survey estimates (LFS), by National Occupational Classification (NOC) and sex, annual
282-0143	Labour Force Survey estimates (LFS), by usual hours worked, National Occupational Classification (NOC) and sex, unadjusted for seasonality, monthly
282-0144	Labour Force Survey estimates (LFS), by usual hours worked, National Occupational Classification (NOC) and sex, annual
282-0145	Labour Force Survey estimates (LFS), by actual hours worked, National Occupational Classification (NOC) and sex, unadjusted for seasonality, monthly
282-0146	Labour Force Survey estimates (LFS), by actual hours worked, National Occupational Classification (NOC) and sex, annual
282-0147	Labour Force Survey estimates (LFS), multiple jobholders by National Occupational Classification (NOC), sex and age group, unadjusted for seasonality, monthly
282-0148	Labour Force Survey estimates (LFS), multiple jobholders by National Occupational Classification (NOC), sex and age group, annual
282-0149	Labour Force Survey estimates (LFS), job tenure by National Occupational Classification (NOC) and sex, unadjusted for seasonality, monthly
282-0150	Labour Force Survey estimates (LFS), job tenure by National Occupational Classification (NOC) and sex, annual
282-0151	Labour Force Survey estimates (LFS), wages of employees by type of work, National Occupational Classification (NOC), sex, and age group, unadjusted for seasonality, monthly
282-0152	Labour Force Survey estimates (LFS), wages of employees by type of work, National Occupational Classification (NOC), sex, and age group, annual
282-0153	Labour Force Survey estimates (LFS), employees working overtime (weekly) by National Occupational Classification (NOC), sex and age group, unadjusted for seasonality, monthly
282-0154	Labour Force Survey estimates (LFS), employees working overtime (weekly) by National Occupational Classification (NOC), sex and age group, annual
282-0155	Labour Force Survey estimates (LFS), employment by National Occupational Classification (NOC), seasonally adjusted, monthly
282-0156	Labour Force Survey estimates (LFS), employment by economic region based on 2011 Census boundaries and National Occupational Classification (NOC), three-month moving average, unadjusted for seasonality, monthly
282-0157	Labour Force Survey estimates (LFS), employment by economic region based on 2011 Census boundaries and National Occupational Classification (NOC), annual
282-0158	Labour Force Survey estimates (LFS), employment by census metropolitan area based on 2011 Census boundaries and National Occupational Classification (NOC), three-month moving average, unadjusted for seasonality, monthly
282-0159	Labour Force Survey estimates (LFS), employment by census metropolitan area based on 2011 Census boundaries and National Occupational Classification (NOC), annual
282-0160	Labour Force Survey estimates (LFS), weekly wage distributions of employees by type of work, National Occupational Classification (NOC) and sex, unadjusted for seasonality, monthly
282-0161	Labour Force Survey estimates (LFS), weekly wage distributions of employees by type of work, National Occupational Classification (NOC) and sex, annual
282-0162	Labour Force Survey estimates (LFS), hourly wage distribution of employees by type of work, National Occupational Classification (NOC) and sex, unadjusted for seasonality, monthly
282-0163	Labour Force Survey estimates (LFS), hourly wage distribution of employees by type of work, National Occupational Classification (NOC) and sex, annual
282-0164	Labour Force Survey estimates (LFS), employees by union status and National Occupational Classification (NOC), Canada, annual

CANSIM tables

282-0165	Labour Force Survey estimates (LFS), employment by Aboriginal group, National Occupational Classification (NOC), sex and age group, annual
282-0166	Labour Force Survey estimates (LFS), employment by Aboriginal group, National Occupational Classification (NOC) and age group, Canada, selected provinces and regions, annual
282-0167	Labour Force Survey estimates (LFS), average usual hours and wages of employees by age group, sex, union coverage, job permanency, and National Occupational Classification (NOC), unadjusted for seasonality, monthly
282-0168	Labour Force Survey estimates (LFS), regional unemployment rates used by the Employment Insurance Program, three-month moving average, seasonally adjusted, monthly
282-0200	Labour Force Survey estimates (LFS), weekly wage distributions of employees by type of work, North American Industry Classification System (NAICS), and sex, unadjusted for seasonality, monthly
282-0201	Labour Force Survey estimates (LFS), weekly wage distributions of employees by type of work, North American Industry Classification System (NAICS), and sex, annual
282-0204	Labour Force Survey estimates (LFS), hourly wage distributions of employees by type of work, North American Industry Classification System (NAICS), and sex, unadjusted for seasonality, monthly
282-0205	Labour Force Survey estimates (LFS), hourly wage distributions of employees by type of work, North American Industry Classification System (NAICS), and sex, annual
282-0208	Labour Force Survey estimates (LFS), by educational degree, sex and age group, unadjusted for seasonality, monthly
282-0209	Labour Force Survey estimates (LFS), by educational degree, sex and age group, annual
282-0210	Labour Force Survey estimates (LFS), by family type and family age composition, unadjusted for seasonality, monthly
282-0211	Labour Force Survey estimates (LFS), by family type and family age composition, annual
282-0212	Labour Force Survey estimates (LFS), hours lost by employees by reason of absence, full and part week and sex, unadjusted for seasonality, monthly
282-0213	Labour Force Survey estimates (LFS), hours lost by employees by reason of absence, full and part week and sex, annual
282-0214	Labour Force Survey estimates (LFS), activity prior to unemployment by sex and age group, unadjusted for seasonality, monthly
282-0215	Labour Force Survey estimates (LFS), activity prior to unemployment, by sex and age group, annual
282-0216	Labour Force Survey estimates (LFS), reason for leaving job during previous year by sex and age group, unadjusted for seasonality, monthly
282-0217	Labour Force Survey estimates (LFS), reason for leaving job during previous year by sex and age group, annual
282-0218	Labour Force Survey estimates (LFS), reason for not looking for work, by sex and age group, unadjusted for seasonality, monthly
282-0219	Labour Force Survey estimates (LFS), reason for not looking for work, by sex and age group, annual
282-0220	Labour Force Survey estimates (LFS), employees by union status, sex and age group, Canada and provinces, annual
282-0221	Labour Force Survey estimates (LFS), employees by union status, sex, age group and education level, Canada, annual
282-0223	Labour Force Survey estimates (LFS), employees by union status, North American Industry Classification System (NAICS) and sex, Canada, annual
282-0224	Labour Force Survey estimates (LFS), employees by union status, establishment size, job tenure, type of work and job permanency, Canada, annual
282-0225	Labour Force Survey estimates (LFS), average weekly earnings, average hourly wage rate and average usual weekly hours by union status and type of work, Canada and provinces, annual
282-0226	Labour Force Survey estimates (LFS), by Aboriginal group, sex and age group, Canada, selected provinces and regions, annual
282-0227	Labour Force Survey estimates (LFS), by detailed Aboriginal group, sex and age group, Canada and selected regions, annual
282-0228	Labour Force Survey estimates (LFS), by Aboriginal group, educational attainment and age group, Canada and selected regions, annual
282-0229	Labour Force Survey estimates (LFS), employment by Aboriginal group, North American Industry Classification System (NAICS), sex and age group, annual
282-0230	Labour Force Survey estimates (LFS), employment by Aboriginal group, North American Industry Classification System (NAICS) and age group, Canada and selected regions, annual

Survey

3701	Labour Force Survey
------	---------------------

Summary tables

Average hourly wages of employees by selected characteristics and occupation, unadjusted data, by province (monthly)
Days lost per worker by industry and sex
People employed, by educational attainment
Reasons for part-time work by sex and age group
Self-employment, historical summary
Employment by age, sex, type of work, class of worker and province (monthly)
Actual hours worked per week by industry, seasonally adjusted (monthly)
Labour force characteristics, unadjusted, by territory (3 month moving average)
Employment by industry and sex
Full-time and part-time employment by sex and age group
Labour force characteristics by age and sex
Labour force characteristics by immigrant status of population aged 25 to 54, and by educational attainment
Labour force characteristics by immigrant status, by detailed age group
Labour force characteristics by immigrant status of population aged 25 to 54, by country of birth
Days lost per worker due to illness or disability, by sex, by province
Employment by industry
Labour force characteristics, seasonally adjusted, by province (monthly)
Labour force characteristics, unadjusted, by province (monthly)
Labour force, employment and unemployment, levels and rates, by province
Economic indicators, by province and territory (monthly and quarterly)
Days lost per worker by reason, by provinces
Labour force characteristics, seasonally adjusted, by census metropolitan area (3 month moving average)
Labour force characteristics, unadjusted, by economic region (3 month moving average)
Distribution of employed people, by industry, by province
Employment by major industry group, seasonally adjusted, by province (monthly)
Labour force characteristics
Labour force characteristics, unadjusted, by census metropolitan area (3 month moving average)
Labour force characteristics, population 15 years and older, by census metropolitan area
Labour force characteristics, population 15 years and older, by economic region, by province
Canada: Economic and financial data
Labour force characteristics by sex and age group
Labour force characteristics by immigrant status of population aged 25 to 54, by province
Latest statistics (monthly)
