

CATALOGUE No.

73-001

MONTHLY



STATISTICAL REPORT ON THE OPERATION OF
THE UNEMPLOYMENT INSURANCE ACT
JANUARY 1967

(Compiled from material supplied by the Unemployment Insurance Commission)

Published by Authority of
The Minister of Trade and Commerce

DOMINION BUREAU OF STATISTICS
Labour Division
Unemployment Insurance, Pensions and Manpower Section

April 1967
2006-509

Price: \$2.00 per annum

Vol. 26 - No. 1

TABLE OF CONTENTS

	Page
Chart, Unemployment Insurance Activities	1
Commentary:	
Claims and Benefit Payments During January	4
Industrial Classification of Persons Filing New Claims During December	3

List of Tables

Consolidated Data on Claims for Regular, Seasonal and Fishing Benefit:

Summary Table	3
Table:	
1. Estimates of the Insured Population under the Unemployment Insurance Act	2
2. Number of Initial and Renewal Claims Filed in Local Offices in Each Province	9
3. Claimants Currently Reporting to Local Offices by Number of Weeks on Claim, Province and Sex	10
4. Disposition of Initial and Renewal Claims, and Claims Pending at the End of the Month, by Province	11
5. Number of Claimants Not Entitled to Benefit in Each Province, with Chief Reasons for Non-entitlement	12
6. Estimates of the Number of Beneficiaries, by Province	13
7. Benefit Payments, Showing Number of Weeks and Amount Paid, by Province	14
8. Number of Weeks Compensated, Classified as to Complete and Partial Weeks, and Showing Separately the Number of Partial Weeks Due to Excess Earnings, by Province	15
Seasonal Benefit Including Fishing Claimants, 1966-67 period	16

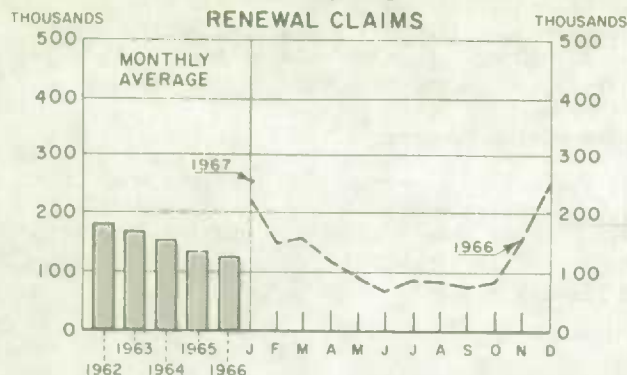
Table:

3(a) Seasonal Benefit Claimants Currently Reporting to Local Offices on the Last Working Day of the Month, by Sex and Province	16
3(b) Fishing Seasonal Benefit Claimants included in Table 3(a)	16
Unemployment Insurance Activities, Calendar Years 1966 and 1965; Historical 1942 - 1966	17
Appendix 1	18
Glossary of Terms	27
Additional Historical Data (since 1942) are contained in the July 1966 issue in this series	

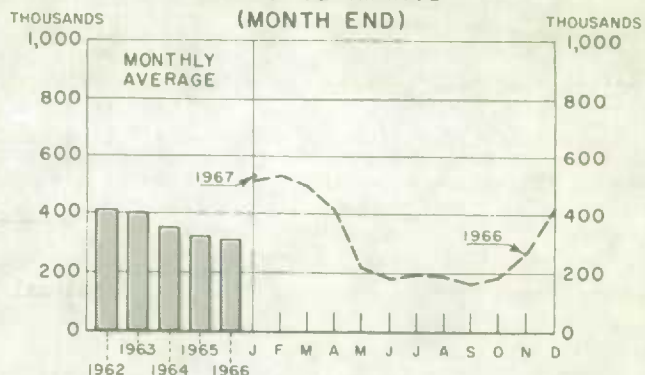
For information regarding the personal characteristics, occupational and industrial status of both the insured population and persons establishing benefit periods, see the "Annual Report on Benefit Periods Established and Terminated under the Unemployment Insurance Act", DBS Catalogue No. 73-201.

UNEMPLOYMENT INSURANCE ACTIVITIES

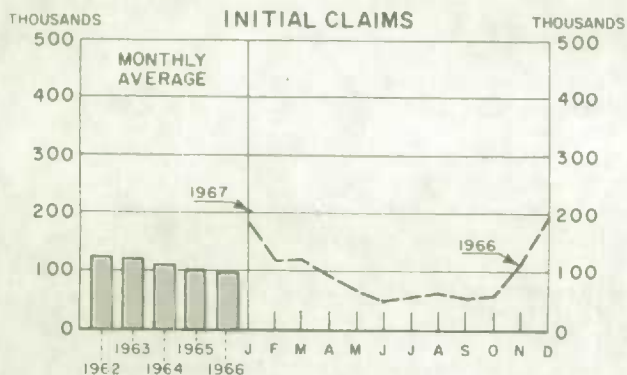
INITIAL AND RENEWAL CLAIMS



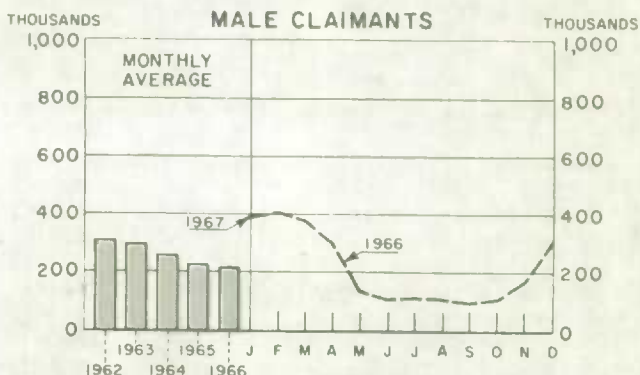
TOTAL CLAIMANTS (MONTH END)



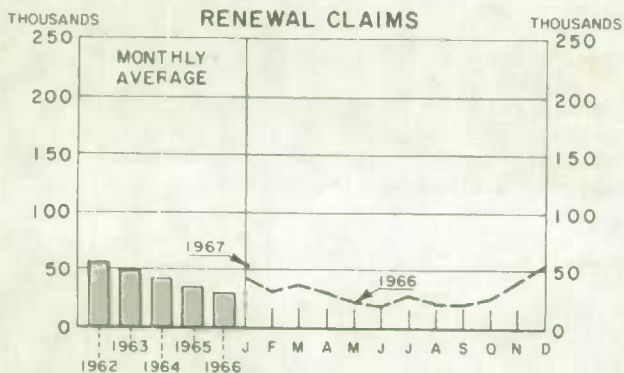
INITIAL CLAIMS



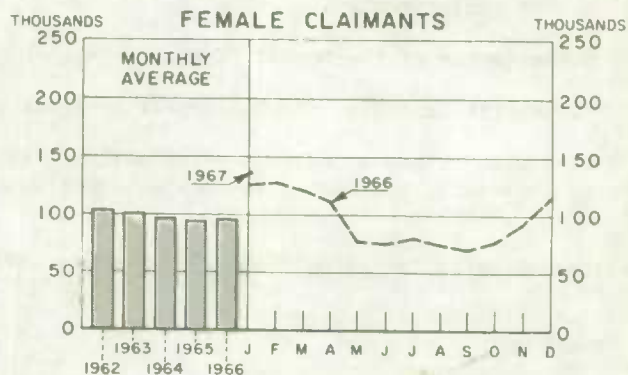
MALE CLAIMANTS



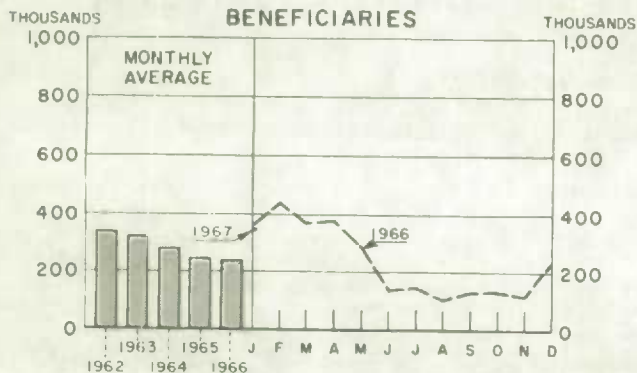
RENEWAL CLAIMS



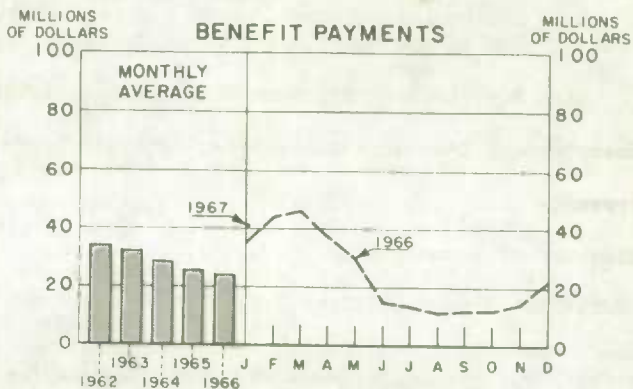
FEMALE CLAIMANTS



BENEFICIARIES



BENEFIT PAYMENTS



CLAIMS AND BENEFIT PAYMENTS

JANUARY 1967

Claimants at month-end

Claimants for unemployment insurance benefit totalled 531,900 on January 31, 25 per cent higher than the 423,400 recorded at the end of December. On January 31, 1966 the total was 511,800. More than 80 per cent of the month-to-month increase was due to higher totals of male claimants; this is substantially less than the same interval last year when almost 90 per cent were male. Females accounted for 60 per cent of the increase from one year ago.

Examination of the following table illustrates movements in the count of regular and seasonal benefit claimants, by sex. Regular benefit claimants increased by almost 66,000 from December 30 to January 31, while the year-over-year increment was 28,000. Seasonal benefit claimants increased by some 43,000 from December 30 to January 31, but were 7,000 lower than last year. The year-over-year decrease was attributable to males, females having increased only slightly.

	<u>Percentage Change</u>				
	Jan. 31, 1967	Dec. 30, 1966	Jan. 31, 1966	Dec. 30, 1966 to Jan. 31, 1967	Jan. 31, 1966 to Jan. 31, 1967
All Claimants	531,926	423,437	511,768	+ 26	+ 4
Male	394,757	307,269	386,634	+ 28	+ 2
Female	137,169	116,168	125,134	+ 18	+ 10
Regular Benefit(1)	429,442	363,847	401,846	+ 18	+ 7
Male	317,496	263,053	300,868	+ 21	+ 6
Female	111,946	100,794	100,978	+ 11	+ 11
Seasonal Benefit	102,484	59,590	109,922	+ 72	- 7
Male	77,261	44,216	85,766	+ 75	- 10
Female	25,223	15,374	24,156	+ 64	+ 4
Non-fishing Seasonal	79,889	45,738	85,267	+ 75	- 6
Male	54,848	30,587	61,252	+ 79	- 10
Female	25,041	15,151	24,015	+ 65	+ 4
Fishing Seasonal	22,595	13,852	24,655	+ 63	- 8
Male	22,413	13,629	24,514	+ 64	- 9
Female	182	223	141	- 18	+ 29

Initial and renewal claims

A total of 254,400 initial and renewal claims were filed during January, slightly higher than the December total of 251,500 and some 29,000 above the January 1966 total of 225,000. Claims arising out of separations from employment during the month accounted for 219,000 of the total, the residual 36,000 being requests for re-establishment of credits, most of which were transitional from regular to seasonal benefit.

Beneficiaries and benefit payments

The average weekly number of beneficiaries during January was estimated at 354,200 in comparison with 226,000 in December and 361,200 one year ago. Benefit payments during the month totalled \$41.4 million versus \$22.4 million in December and \$35.9 million in January 1966. The average weekly payment in January was \$25.96, for December \$24.81 and \$24.86 in January 1966.

Provincial data

Claimant totals on January 31 were substantially higher than on December 30 in all provinces. The largest percentage increases occurred in Nova Scotia (43 per cent), Ontario (37 per cent) and Manitoba (33 per cent). The month-to-month increases in Nova Scotia and Ontario were associated with layoffs in the mining industry and the manufacture of transportation equipment, respectively. Percentage changes by sex are shown in the following table.

(1) These totals include some cases not completely processed at these dates; on final determination, a significant proportion of these would be eligible only for seasonal benefit.

Percentage Changes in Month-end Claimant Count

	December 30, 1966 to January 31, 1967			January 31, 1966 to January 31, 1967			December 31, 1965 to January 31, 1966		
	Total	Male	Female	Total	Male	Female	Total	Male	Female
CANADA	+ 26	+ 28	+ 18	+ 4	+ 2	+ 10	+ 22	+ 27	+ 11
Newfoundland	+ 25	+ 25	+ 24	- 3	- 5	+ 38	+ 30	+ 31	+ 18
Prince Edward Island ..	+ 27	+ 28	+ 26	- 2	- 4	+ 10	+ 29	+ 30	+ 22
Nova Scotia	+ 43	+ 45	+ 30	+ 5	+ 4	+ 9	+ 30	+ 31	+ 27
New Brunswick	+ 28	+ 33	+ 13	- 3	- 4	+ 1	+ 25	+ 28	+ 15
Quebec	+ 19	+ 22	+ 12	+ 2	- 2	+ 15	+ 14	+ 20	- 2
Ontario	+ 37	+ 49	+ 18	+ 14	+ 15	+ 11	+ 26	+ 33	+ 15
Manitoba	+ 33	+ 33	+ 32	- 13	- 13	- 11	+ 21	+ 29	-
Saskatchewan	+ 29	+ 26	+ 38	- 7	- 7	- 8	+ 38	+ 41	+ 30
Alberta	+ 22	+ 18	+ 37	- 9	- 10	- 7	+ 34	+ 36	+ 26
British Columbia	+ 9	+ 9	+ 17	+ 9	+ 9	+ 11	+ 18	+ 18	+ 18

An increase of 20,000 claims filed in Ontario, over December, was partially offset by declines in Newfoundland and British Columbia; elsewhere, the numbers involved were small.

Percentage Changes in Claims Filed, by Province

	December 1966 to January 1967			January 1966 to January 1967			December 1965 to January 1966		
	Total	Initial	Renewal	Total	Initial	Renewal	Total	Initial	Renewal
CANADA	+ 1	+ 3	- 4	+ 13	+ 11	+ 21	- 14	- 12	- 23
Newfoundland	- 47	- 49	- 36	- 6	- 7	+ 3	- 51	- 52	- 35
Prince Edward Island ..	- 42	- 43	- 34	+ 10	+ 13	- 8	- 44	- 47	- 12
Nova Scotia	+ 4	+ 6	- 7	+ 16	+ 16	+ 15	- 22	- 20	- 30
New Brunswick	- 3	-	- 20	+ 17	+ 18	+ 8	- 36	- 37	- 30
Quebec	- 1	+ 3	- 13	+ 12	+ 14	+ 7	- 19	- 16	- 28
Ontario	+ 30	+ 28	+ 38	+ 34	+ 27	+ 65	- 1	+ 5	- 18
Manitoba	+ 9	+ 17	- 18	- 6	- 4	- 11	- 9	- 6	- 20
Saskatchewan	- 8	- 2	- 32	- 4	- 3	- 11	- 5	- 2	- 22
Alberta	+ 11	+ 19	- 16	- 14	- 13	- 17	+ 24	+ 29	+ 4
British Columbia	- 21	- 17	- 36	- 7	- 7	- 6	- 2	+ 2	- 16

Industrial Classification of Persons Separated from Employment and Filing Initial (1)
Claims for Unemployment Insurance Benefit During December 1966

New cases of recorded unemployment totalled 133,000 during December, in comparison with 141,000 the same month one year ago. Approximately 60 per cent of the current cases were concentrated in Ontario and Quebec.

There was a significantly higher concentration in the manufacturing industry which accounted for 35 per cent this month in comparison with just over 25 per cent one year ago. All provinces except Manitoba indicated higher percentages this year. In all other industries, the pattern was virtually unchanged from one year ago.

(1) Initial claims taken on behalf of persons exhausting benefit and seeking re-establishment of credits are excluded. Excluded also are persons separating from employment and filing renewal claims.

TABLE I. Percentage Distribution of Claims(1) by Industry and Province
December 1966 and 1965

Industry group		Canada	Nfld.	P.E.I.	N.S.	N.B.	Que.	Ont.	Man.	Sask.	Alta.	B.C.
Total new cases (000's)	1966	132.6	9.7	2.2	8.6	7.4	38.6	37.3	3.6	3.7	4.3	17.3
	1965	140.5	11.3	2.2	10.3	10.3	43.4	33.2	5.1	4.2	4.9	15.6
Per cent distribution												
Forestry (mainly logging)	1966	6	8	1	5	20	7	1	-	-	1	10
	1965	7	11	2	5	18	6	1	(2)	-	1	22
Fishing(3) and trapping	1966	5	17	12	25	9	-	-	-	-	-	6
	1965	5	14	12	37	6	1	(2)	1	-	-	6
Mining	1966	2	2	1	2	1	2	2	1	2	3	2
	1965	1	1	(2)	2	2	1	1	(2)	2	3	1
Manufacturing	1966	35	15	26	21	23	35	50	22	14	19	34
	1965	26	10	14	14	16	32	36	27	10	18	23
Construction	1966	25	27	19	18	17	27	25	32	35	35	18
	1965	25	26	20	16	14	25	28	28	37	36	20
Transportation, communication and other utilities	1966	9	11	17	11	7	10	6	13	14	11	9
	1965	10	15	14	11	8	11	8	13	11	10	8
Trade	1966	8	8	14	10	7	7	7	15	20	10	11
	1965	9	13	16	7	10	5	9	16	17	12	9
Service	1966	6	3	2	4	3	7	5	9	8	14	6
	1965	7	4	4	3	5	6	11	8	9	12	8
Public administration and defence	1966	3	8	4	2	11	2	1	5	5	6	2
	1965	7	5	11	2	18	10	3	6	12	6	2
Other	1966	2	1	4	2	2	2	3	2	2	3	3
	1965	3	1	6	3	3	3	3	2	2	2	3
All cases	1966	100	100	100	100	100	100	100	100	100	100	100
	1965	100	100	100	100	100	100	100	100	100	100	100

(1) Initial claims taken on behalf of persons exhausting benefit and seeking re-establishment of credits are excluded. Excluded also are persons separating from employment and filing renewal claims.

(2) Less than 1/2 of 1 per cent.

(3) Persons whose reported occupation under covered employment was "fisherman" were coded to the fishing industry even though the nature of business of the most recent employer was other than fishing. This differs from the general coding practice of assigning a single code on the basis of the principal activity of the employer. However, fishermen report themselves usually as self-employed.

TABLE II. Percentage Distribution of Claims, by Industry, Quarterly Intervals

	1966				1965
	December	September	June	March	December
Total new cases (000's)	132.6	47.5	30.7	60.8	140.5
	Per cent distribution				
Forestry (mainly logging)	6	2	1	15	7
Fishing and trapping	5	1	(1)	1	5
Mining	2	1	1	2	1
Manufacturing	35	36	38	25	26
Construction	25	13	12	21	25
Transportation, communication and other utilities	9	9	6	8	10
Trade	8	14	17	12	9
Service	6	14	17	9	7
Public administration and defence	3	5	4	6	7
Other	2	5	3	2	3
All cases	100	100	100	100	100

(1) Less than 1/2 of 1 per cent.

.. Figures not available.

- Nil.

Summary Table

Activity	Jan. 1967	Dec. 1966	Jan. 1966	% change from		Cumulative data			
				Dec. 1966	Jan. 1966	January to January		12 months ending January	
						1967	1966	1967	1966
	thousands					thousands			
Insured population as at month-end	4,733	4,482	4,482*	..	4,346*
Initial and renewal claims filed:									
Total	254	251	225	+ 1	+ 13	254	225	1,577	1,623
Initial	201	196	181	+ 3	+ 11	201	181	1,190	1,208
Renewal	54	56	44	- 4	+ 21	54	44	387	415
Claimants currently reporting to local offices	532	423	512	+ 26	+ 4	532*	512*	316*	319*
Regular	429	364	402	+ 18	+ 7				
S.B.	102	60	110	+ 72	- 7				
S.B. Fishing	23	14	25	+ 63	- 8				
Beneficiaries (weekly average)	354	226	361	+ 57	- 2	354*	361*	234*	251*
Weeks compensated	1,594	904	1,445	+ 76	+ 10	1,594	1,445	12,191	12,570
Benefit paid \$	41,383	22,427	35,910	+ 85	+ 15	41,383	35,910	300,774	308,174
Average weekly benefit \$	25.96	24.81	24.86	+ 5	+ 4	25.96	24.86	24.67	24.52

* Monthly average.

TABLE 1. Estimates of the Insured Population under the Unemployment Insurance Act

End of	Total	Employed	Claimants
1966 - December	4,733,000	4,309,600	423,400
November	4,591,000	4,324,700	266,300
October	4,521,000	4,336,700	184,300
September	4,528,000	4,363,100	164,900
August	4,577,000	4,389,800	187,200
July	4,512,000	4,316,000	196,000
June	4,500,000	4,318,700	181,300
May	4,404,000	4,186,400	217,600
April	4,465,000	4,051,100	413,900
March	4,498,000	4,000,000	498,000
February	4,506,000	3,975,500	530,500
January	4,482,000	3,970,200	511,800
1965 - December	4,444,000	4,026,000	418,000

TABLE 2. Number of Initial and Renewal Claims Filed in Local Offices in Each Province(1)

Province	1967 - January - 1966					
	Total	Initial	Renewal	Total	Initial	Renewal
CANADA	254,365	200,682	53,683	225,022	180,526	44,496
Newfoundland	9,417	8,167	1,250	10,006	8,795	1,211
Prince Edward Island	2,146	1,896	250	1,958	1,685	273
Nova Scotia	15,273	12,787	2,486	13,163	10,995	2,168
New Brunswick	12,858	10,872	1,986	11,031	9,198	1,833
Quebec	73,252	57,122	16,130	65,243	50,214	15,029
Ontario	87,478	65,614	21,864	65,042	51,803	13,239
Manitoba	8,531	7,118	1,413	9,037	7,443	1,594
Saskatchewan	7,181	6,181	1,000	7,507	6,385	1,122
Alberta	10,283	8,504	1,779	11,944	9,809	2,135
British Columbia	27,946	22,421	5,525	30,091	24,199	5,892

(1) In addition, revised claims received numbered 46,677.

TABLE 3. Claimants Currently Reporting to Local Offices by Number of Weeks on Claim, Province and Sex
(Counted on last working day of the month)

Province and sex	Total claimants	Number of weeks on claim (based on 20 per cent sample)				Total claimants
		1-4	5-13	14-26	27 or more(1)	
	January 31, 1967					January 31, 1966
CANADA	531,926	258,568	203,369	47,799	22,190	511,768
Male	394,757	201,869	155,350	25,862	11,676	386,634
Female	137,169	56,699	48,019	21,937	10,514	125,134
Newfoundland	33,509	12,779	18,056	1,758	916	34,499
Male	30,727	11,766	16,945	1,319	697	32,476
Female	2,782	1,013	1,111	439	219	2,023
Prince Edward Island	6,495	2,609	3,543	241	102	6,601
Male	5,157	2,089	2,882	154	32	5,384
Female	1,338	520	661	87	70	1,217
Nova Scotia	34,411	16,793	13,409	2,761	1,448	32,887
Male	28,654	14,285	11,269	2,009	1,091	27,589
Female	5,757	2,508	2,140	752	357	5,298
New Brunswick	31,335	13,976	13,493	2,798	1,068	32,245
Male	24,781	11,755	10,712	1,671	643	25,743
Female	6,554	2,221	2,781	1,127	425	6,502
Quebec	154,402	75,608	57,277	14,707	6,810	151,625
Male	115,296	60,242	43,913	7,868	3,273	117,696
Female	39,106	15,366	13,364	6,839	3,537	33,929
Ontario	153,918	84,376	47,994	14,060	7,488	135,301
Male	102,500	61,938	30,274	6,504	3,784	88,916
Female	51,418	22,438	17,720	7,556	3,704	46,385
Manitoba	17,996	8,377	7,876	1,185	558	20,626
Male	13,631	6,205	6,475	636	315	15,722
Female	4,365	2,172	1,401	549	243	4,904
Saskatchewan	16,068	7,250	7,316	954	548	17,369
Male	12,448	5,560	6,177	460	251	13,425
Female	3,620	1,690	1,139	494	297	3,944
Alberta	21,010	9,912	8,651	1,734	713	23,172
Male	15,621	7,578	6,990	661	392	17,381
Female	5,389	2,334	1,661	1,073	321	5,791
British Columbia	62,782	26,888	25,754	7,601	2,539	57,443
Male	45,942	20,451	19,713	4,580	1,198	42,302
Female	16,840	6,437	6,041	3,021	1,341	15,141

(1) The bulk of the cases in this group were on claim from 27-39 weeks.

Note: Values less than 50 subject to relatively large sampling variability.

TABLE 4. Disposition of Initial and Renewal Claims and Claims Pending at the End of the Month, by Province(1)

Province	Adjudicated					Pending	
	Total	Entitled to benefit		Not entitled to benefit		Initial	Renewal
		Initial	Renewal	Initial	Renewal		
	January 1967						
CANADA	270,749	164,815	51,169	46,541	8,224	60,509	13,080
Newfoundland	12,915	9,065	1,490	2,170	190	1,461	231
Prince Edward Island	2,917	2,259	290	340	28	393	42
Nova Scotia	17,229	12,242	2,686	2,081	220	3,229	487
New Brunswick	13,976	9,719	2,012	2,019	226	2,310	521
Quebec	77,838	45,929	15,422	13,727	2,760	19,885	4,395
Ontario	88,090	49,415	19,387	16,051	3,237	19,514	4,703
Manitoba	8,609	5,334	1,392	1,623	260	2,260	444
Saskatchewan	7,869	5,148	1,063	1,497	161	1,902	277
Alberta	9,804	6,073	1,578	1,904	249	2,917	523
British Columbia	31,502	19,631	5,849	5,129	893	6,638	1,457
	January 1966						
CANADA	253,471	156,107	45,658	43,751	7,955	61,078	12,448
Newfoundland	13,448	9,234	1,444	2,655	115	2,272	321
Prince Edward Island	2,586	1,899	260	391	36	374	63
Nova Scotia	16,602	11,872	2,460	2,071	199	2,411	497
New Brunswick	13,958	9,439	2,034	2,263	222	2,302	507
Quebec	77,579	43,677	15,723	14,994	3,185	18,842	4,407
Ontario	65,936	38,528	12,587	11,849	2,972	20,951	4,136
Manitoba	9,037	5,803	1,484	1,526	224	2,194	437
Saskatchewan	7,986	5,399	1,170	1,277	140	2,298	341
Alberta	11,922	7,653	2,111	1,932	226	2,842	513
British Columbia	34,417	22,603	6,385	4,793	636	6,592	1,226

(1) In addition 43,656 revised claims were disposed of. Of these, 4,379 were special requests not granted and 1,501 were appeals by claimants. There were 11,730 revised claims pending at the end of the month.

TABLE 5. Number of Claimants Not Entitled to Benefit in Each Province during January 1966 and 1967
with Chief Reasons for Non-entitlement

Chief reasons for non-entitlement	Canada	Nfld.	P.E.I.	N.S.	N.B.	Que.	Ont.	Man.	Sask.	Alta.	B.C.
Benefit period not established 1967(1) 1966	19,911 20,820	1,193 1,819	164 242	1,224 1,296	1,241 1,348	6,014 6,340	5,785 4,999	629 629	604 617	801 928	2,256 2,602
Claimants disqualified 1967 1966	45,407 41,299	1,656 1,304	262 252	1,434 1,457	1,470 1,523	13,872 15,476	16,777 13,054	1,694 1,649	1,427 1,110	1,976 1,732	4,839 3,742
Not unemployed 1967 1966	1,874 1,599	67 47	23 23	63 44	47 55	584 520	589 528	136 125	150 89	104 64	111 104
Not capable of and not available for work 1967 1966	9,681 9,328	296 301	70 79	408 410	320 400	2,483 2,641	3,469 3,235	527 493	458 376	621 468	1,029 925
Loss of work due to a labour dispute 1967 1966	549 215	2 -	- -	- 36	5 -	69 58	432 112	2 -	1 -	2 -	36 9
Refused offer of work and neglected opportunity to work 1967 1966	373 1,270	17 15	- 14	9 107	49 45	112 421	142 397	5 56	5 39	11 79	23 97
Discharged for misconduct ... 1967 1966	1,476 1,655	57 37	9 34	61 63	41 66	485 500	445 539	32 57	44 44	108 102	194 213
Voluntarily left employment without just cause 1967 1966	8,323 9,143	665 450	69 42	382 381	381 486	2,475 2,831	2,092 2,695	277 310	297 265	572 563	1,113 1,120
Other reasons 1967 1966	23,131 18,089	552 454	91 60	511 416	627 471	7,664 8,505	9,608 5,548	715 608	472 297	558 456	2,333 1,274

(1) Previously failed on initial claim but subsequently established on revised claim during January 1967

6,700 446 64 388 490 1,909 1,937 195 181 244 846

TABLE 6. Estimates of the Number of Beneficiaries, by Province

Province	Average per week	
	1967 - January - 1966	
	thousands	
CANADA	354.2	361.2
Newfoundland	24.2	31.3
Prince Edward Island	5.0	5.0
Nova Scotia	21.1	22.2
New Brunswick	20.0	21.8
Quebec	108.6	107.6
Ontario	95.8	84.7
Manitoba	11.3	19.0
Saskatchewan	10.4	11.6
Alberta	14.2	14.8
British Columbia	43.7	43.3

TABLE 7. Benefit Payments, by Province

Province	1967 - January - 1966			
	Weeks	Amount	Weeks	Amount
	number	dollars	number	dollars
CANADA	1,594,088	41,382,511	1,444,666	35,910,149
Newfoundland	108,788	3,017,453	125,055	3,095,658
Prince Edward Island	22,576	539,231	19,827	468,860
Nova Scotia	95,173	2,294,229	88,699	2,109,639
New Brunswick	89,818	2,114,476	87,257	2,040,656
Quebec	488,572	12,603,320	430,490	10,611,950
Ontario	431,198	10,957,789	338,920	8,357,903
Manitoba	50,653	1,441,535	75,824	1,902,831
Saskatchewan	46,582	1,186,153	46,418	1,162,274
Alberta	63,866	1,771,284	59,075	1,495,682
British Columbia	196,862	5,457,041	173,101	4,664,696

TABLE 8. Number of Weeks of Benefit, by Province

Province	Complete weeks	Partial weeks	
		Total	Due to excess earnings
	January 1967		
CANADA	1,374,033	220,055	74,316
Newfoundland	87,792	20,996	9,248
Prince Edward Island	21,363	1,213	916
Nova Scotia	82,934	12,239	5,606
New Brunswick	77,475	12,343	5,395
Quebec	425,428	63,144	19,529
Ontario	386,977	44,221	18,654
Manitoba	40,376	10,277	1,517
Saskatchewan	36,590	9,992	1,372
Alberta	50,344	13,522	1,922
British Columbia	164,754	32,108	10,157
	January 1966		
CANADA	1,351,847	92,819	65,462
Newfoundland	119,255	5,800	3,873
Prince Edward Island	18,845	982	806
Nova Scotia	81,411	7,288	5,539
New Brunswick	82,265	4,992	3,586
Quebec	402,072	28,418	19,809
Ontario	316,667	22,253	15,366
Manitoba	71,571	4,253	3,071
Saskatchewan	43,979	2,439	1,771
Alberta	55,364	3,711	2,558
British Columbia	160,418	12,683	9,083

Seasonal Benefit, 1966-67 period

Provisions governing the operation of seasonal benefit are unchanged from last year. Effective November 20, 1966 to mid-May 1967, claims failing the regular contribution requirements are considered for seasonal benefit. Benefit is not payable under these terms for unemployment occurring before December 4(1). Only one seasonal benefit period may be established by a claimant during this period. The minimum duration is for 12 weeks,(2) hence exhaustion of seasonal benefit will not occur before February 18.

In testing for seasonal benefit, claims failing the regular requirements are considered first under class A, for which the minimum requirement is 15 contribution weeks subsequent to the week containing March 31, 1966. Total entitlement for claimants qualifying in this class is based entirely on contributions since that date. The benefit formula provides 5 full weeks of benefit for every 6 weeks of contribution(2).

Cases failing the contribution requirement for class A are then examined for possible qualification under class B which represents an extension of benefit for those for whom a regular benefit period terminated during the interval since May 21, 1966. The authorization will be that shown on the preceding regular benefit period, or the number of weeks which remain in the seasonal benefit period, whichever is the lesser. The weekly rate(3) will be that of the preceding claim, adjusted, if necessary, for any change in dependency status. Claims established subsequent to April 1, 1967 are exclusively class B.

Claimants for seasonal benefit (except fishermen)(4) must comply with all the provisions of the Act and Regulations, except where mentioned above.

Fishing Claimants

Table 3b, Fishing Seasonal Benefit Claimants, includes those seasonal benefit claimants whose claim documents carry the identification F, for fishing. This indicates that the person is eligible for seasonal benefit by virtue of fishing contributions, i.e. his countable contributions for the 15 weeks included at least one week of fishing contributions (or his preceding regular benefit period was also designated as F).

- (1) A claimant eligible to have the waiting period waived could draw seasonal benefit for the week commencing November 27.
- (2) While the minimum entitlement on SBA claims is 13 weeks (SBB, 12 weeks), claims established subsequent to the week ending February 25, 1967 provide entitlement only for the number of weeks remaining between the date of establishment and the end of the seasonal benefit period.
- (3) Section 47 (2a) of the Act is not applicable to seasonal benefit claims. This section was added in September 1959 in order to minimize the impact of short-term employment on the weekly rate for subsequent regular claims filed within a two-year period.
- (4) During the seasonal benefit period, claimants classed as fishermen will be considered available and unemployed in respect to any activity in commercial fishing or in the repair of fishing gear, equipment or boat. However, income from fishing or any other activity during a week is taken into consideration in determining the amount of benefit payable.

TABLE 3a. Seasonal Benefit Claimants Currently Reporting to Local Offices on the Last Working Day of the Month, by Sex and Province

Province	1967 - January - 1966					
	Total	Male	Female	Total	Male	Female
CANADA	102,484	77,261	25,223	109,922	85,766	24,156
Newfoundland	14,065	13,330	735	15,697	15,144	553
Prince Edward Island	2,932	2,431	501	3,158	2,674	484
Nova Scotia	10,718	9,361	1,357	11,124	9,901	1,223
New Brunswick	10,145	8,176	1,969	11,464	9,380	2,084
Quebec	22,364	16,018	6,346	25,297	18,970	6,327
Ontario	21,059	12,099	8,960	21,074	12,826	8,248
Manitoba	3,067	2,391	676	4,255	3,399	856
Saskatchewan	2,618	1,979	639	2,983	2,238	745
Alberta	2,574	1,883	691	3,011	2,252	759
British Columbia	12,942	9,593	3,349	11,859	8,982	2,877

TABLE 3b. Fishing Seasonal Benefit Claimants included in Table 3a

Province	1967 - January - 1966					
	Total	Male	Female	Total	Male	Female
CANADA	22,595	22,413	182	24,655	24,514	141
Newfoundland	8,577	8,571	6	9,267	9,254	13
Prince Edward Island	1,557	1,468	89	1,758	1,708	50
Nova Scotia	4,974	4,956	18	5,458	5,448	10
New Brunswick	2,938	2,910	28	3,223	3,199	24
Quebec	621	610	11	685	677	8
Ontario	459	455	4	525	518	7
Manitoba	125	125	-	146	146	-
Saskatchewan	1	1	-	1	1	-
Alberta	6	6	-	33	31	2
British Columbia	3,337	3,311	26	3,559	3,532	27

Unemployment Insurance Activities - Calendar Years 1966 and 1965

On October 6, 1966, the Minister of Labour announced in the House of Commons, that unemployment insurance coverage was being extended to certain farm workers, effective April 1, 1967. The main exclusions are: workers who are members of the employer's family or who are themselves operators of farms (and hence are employed only casually as a paid worker). While board, lodging or other non-pecuniary remuneration is taken into account in determining total wages for purposes of contribution, no contributions are required for any week in which cash wages are less than \$9. There is no wage ceiling for agricultural workers.

The insured population averaged 4,338,000 in 1966, 2 per cent above the 1965 average of 4,256,000. The increase occurred in the employed segment, the claimants having declined from 322,000 in 1965 to 315,000 in the current year. (See table 1) Similar movements were observed in the labour force (1) where the non-agricultural paid workers increased by 6 per cent and the average unemployment declined.

The improved employment conditions were reflected in a lower claim volume in 1966, i.e. 1,548,000, some 80,000 less than 1965. There were 36 claims filed per 100 insured persons in 1966 versus 38 in 1965. Benefit payments, at \$295 million, were \$17 million less than for 1965. The average weekly payment in 1966 was \$24.52 virtually unchanged from \$24.54 for the previous year.

The charts below illustrate the generally improved conditions in 1966, compared with the preceding four years.

(1) Source: The Labour Force, prepared in the Special Surveys Division, D.B.S. Catalogue No. 71-001.

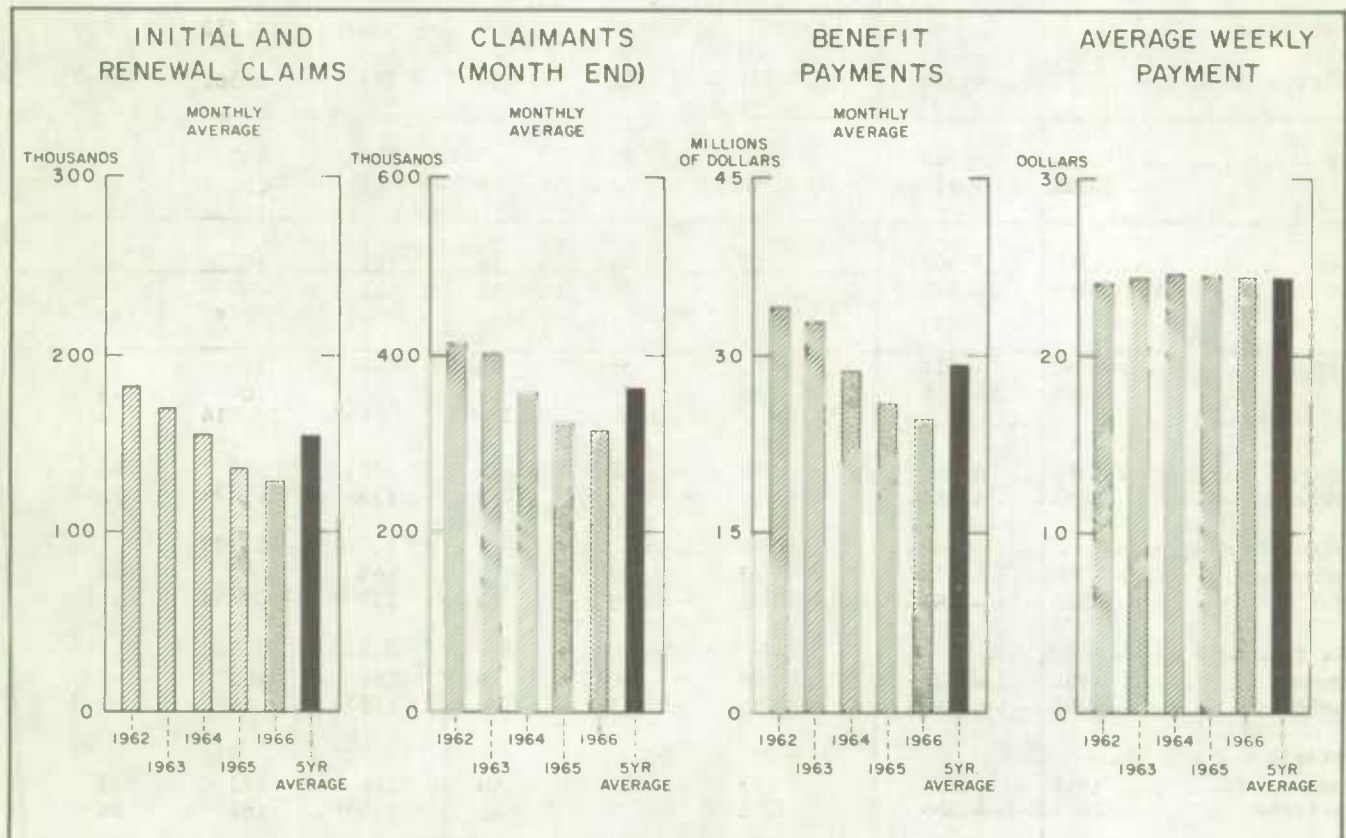


TABLE I. Estimates of Insured Population, Number of Initial and Renewal Claims Filed, Count of Claimants at month-end, by month, 1966 and 1965

Month and year	Estimate of insured population at month-end	Initial and renewal claims filed			Count of claimants at month-end		
		Total	Initial	Renewal	Total	Male	Female
	(1)	(2)	(3)	(4)	(5)	(6)	(7)
	thousands						
Calendar year 1966	4,338(1)	1,548	1,170	378	315(1)	219(1)	96(1)
1965	4,256(1)	1,628	1,208	420	322(1)	227(1)	95(1)
January 1966	4,482	225	181	44	512	387	125
1965	4,389	230	181	49	548	420	128
February 1966	4,506	150	119	32	530	402	128
1965	4,402	160	123	37	559	429	130
March 1966	4,498	159	121	38	498	377	121
1965	4,423	183	135	48	539	413	126
April 1966	4,465	120	91	29	414	302	112
1965	4,395	151	111	40	463	345	118
May 1966	4,404	91	68	23	218	141	77
1965	4,257	93	68	26	229	151	78
June 1966	4,500	68	49	19	181	107	75
1965	4,229	72	51	21	181	106	75
July 1966	4,512	87	59	28	196	115	81
1965	4,268	86	60	26	184	106	78
August 1966	4,577	84	63	21	187	113	74
1965	4,313	84	59	25	172	103	70
September 1966	4,528	73	52	21	165	95	70
1965	4,287	72	48	24	157	91	67
October 1966	4,521	86	60	26	184	108	77
1965	4,286	83	57	26	170	98	72
November 1966	4,591	153	113	40	266	173	93
1965	4,365	152	111	41	245	160	84
December 1966	4,733(2)	251	196	56	423	307	116
1965	4,444	262	205	57	418	305	113

(1) Average of month-end data.

(2) Preliminary.

TABLE II. Number of Initial and Renewal Claims Filed in Local Offices in each Provinces,
by Month, 1966(1)

Province	Total 1966	Jan.	Feb.	Mar.	Apr.	May	June	July	Aug.	Sept.	Oct.	Nov.	Dec.
thousands													
<u>Initial and renewal claims</u>													
CANADA	1,548	225	150	159	120	91	68	87	84	73	86	153	251
Nfld.	64	10	5	6	5	3	2	2	1	2	3	8	18
P.E.I.	12	2	1	1	1	-	-	-	-	-	-	1	4
N.S.	75	13	7	7	6	4	3	3	3	3	4	7	15
N.B.	75	11	7	9	7	4	3	3	3	3	4	8	13
Que.	493	65	54	57	42	33	20	25	23	23	28	48	74
Ont.	474	65	46	44	33	26	26	42	36	24	25	39	67
Man.	50	9	5	6	4	3	2	2	2	2	2	6	8
Sask.	38	8	4	4	3	2	1	1	1	1	1	5	8
Alta.	68	12	7	7	6	4	2	2	3	3	3	8	9
B.C.	199	30	14	17	13	12	9	7	11	12	16	22	36
<u>Initial claims</u>													
CANADA	1,170	181	119	121	91	68	49	59	63	52	60	113	196
Nfld.	54	9	4	5	4	3	1	1	1	1	2	6	16
P.E.I.	10	2	1	1	1	-	-	-	-	-	-	1	3
N.S.	58	11	6	6	5	3	2	2	2	2	2	5	12
N.B.	59	9	6	7	5	3	2	2	2	2	3	6	11
Que.	362	50	41	44	31	24	15	17	16	15	19	34	56
Ont.	359	52	37	34	25	20	19	28	30	18	18	30	51
Man.	40	7	4	5	3	3	1	1	1	1	1	5	6
Sask.	31	6	3	3	2	1	1	1	1	1	1	4	6
Alta.	53	10	6	6	5	3	2	2	2	2	2	6	7
B.C.	144	24	11	12	9	8	6	5	7	8	11	16	27
<u>Renewal claims</u>													
CANADA	378	44	32	38	29	23	19	28	21	21	26	40	56
Nfld.	10	1	1	1	1	-	-	-	-	1	1	1	2
P.E.I.	2	-	-	-	-	-	-	-	-	-	-	-	-
N.S.	18	2	1	2	1	1	1	1	1	1	1	2	3
N.B.	16	2	1	2	2	1	1	1	1	1	1	2	2
Que.	131	15	13	13	10	10	5	8	7	7	9	14	19
Ont.	115	13	9	11	8	6	8	15	6	6	7	10	16
Man.	10	2	1	1	1	1	-	-	-	-	-	2	2
Sask.	7	1	-	1	-	-	-	-	-	-	-	1	1
Alta.	15	2	1	2	1	1	1	1	1	1	1	2	2
B.C.	55	6	3	6	4	4	3	2	4	4	5	6	9

(1) Comparable data for 1965 available in the January 1966 issue in this series.

TABLE III. Number of Claimants Reporting to Local Offices on the Last Working Day of the Month, by Province and Sex, during 1966(1)

Province	Monthly Ave.	Jan.	Feb.	Mar.	Apr.	May	June	July	Aug.	Sept.	Oct.	Nov.	Dec.
thousands													
<u>Total</u>													
CANADA	315	512	530	498	414	218	181	196	187	165	184	266	423
Nfld.	17	34	35	31	24	8	5	5	5	5	7	12	27
P.E.I.	3	7	7	6	4	1	1	1	1	1	1	1	5
N.S.	18	33	34	33	25	11	9	9	9	9	9	13	24
N.B.	18	32	34	33	27	10	8	8	8	8	9	14	24
Que.	99	152	164	162	142	77	59	59	53	50	59	84	129
Ont.	91	135	143	129	107	63	61	81	77	56	56	75	113
Man.	11	21	22	20	16	9	6	6	5	4	5	9	14
Sask.	8	17	18	16	12	5	3	3	3	3	3	7	12
Alta.	13	23	23	19	18	10	7	6	6	6	7	12	17
B.C.	36	57	50	47	40	25	22	19	21	23	28	39	58
<u>Male</u>													
CANADA	219	387	402	377	302	141	107	115	113	95	108	173	307
Nfld.	15	32	33	29	22	7	4	3	4	4	5	10	25
P.E.I.	2	5	6	5	3	1	-	-	-	-	-	1	4
N.S.	14	28	29	28	21	8	6	6	6	6	7	10	20
N.B.	14	26	28	28	22	8	6	6	5	5	6	10	19
Que.	72	118	130	132	111	55	38	35	32	30	35	56	94
Ont.	55	89	94	83	65	34	31	46	46	29	28	41	69
Man.	8	16	17	15	11	5	3	3	2	2	2	6	10
Sask.	6	13	13	12	8	3	1	1	1	1	1	5	10
Alta.	9	17	17	14	13	6	4	3	3	3	3	8	13
B.C.	25	42	35	33	27	16	14	11	13	15	19	27	43
<u>Female</u>													
CANADA	96	125	128	121	112	77	75	81	74	70	77	93	116
Nfld.	2	2	2	2	2	1	1	1	1	1	1	2	2
P.E.I.	1	1	1	1	1	-	-	-	-	-	-	1	1
N.S.	4	5	6	5	5	3	3	3	3	3	3	3	4
N.B.	4	7	7	6	5	3	2	2	2	2	3	4	6
Que.	27	34	34	30	31	22	21	23	21	20	23	28	35
Ont.	37	46	48	47	42	29	30	34	31	27	28	34	44
Man.	4	5	5	5	5	3	3	3	3	2	3	3	3
Sask.	3	4	4	4	3	2	2	2	2	2	2	2	3
Alta.	4	6	6	6	5	4	3	3	3	3	4	4	4
B.C.	11	15	15	15	13	9	8	8	8	8	9	12	14

(1) Comparable data for 1965 available in January 1966 issue in this series.

TABLE IV. Benefit Payments by Province and Month, 1966 and 1965

Province	Total 12 months	Jan.	Feb.	Mar.	Apr.	May	June	July	Aug.	Sept.	Oct.	Nov.	Dec.
thousands of dollars													
CANADA ... 1966	295,301	35,910	44,299	46,157	37,467	29,959	14,712	13,661	11,821	12,265	12,336	14,287	22,427
1965	312,110	39,846	45,333	55,589	43,309	31,660	16,229	11,829	12,791	11,501	10,223	12,615	21,184
Nfld. 1966	17,568	3,096	2,928	3,448	2,570	1,815	451	307	314	403	439	537	1,260
1965	18,019	2,368	3,279	4,508	2,422	2,101	821	264	246	204	246	366	1,194
P.E.I. 1966	2,953	469	560	687	513	225	59	54	42	43	48	54	199
1965	3,096	490	552	796	422	307	80	47	47	45	38	49	225
N.S. 1966	16,376	2,110	2,823	2,872	2,233	1,608	657	627	540	561	617	664	1,065
1965	16,517	2,031	2,592	3,550	2,035	1,723	820	535	554	549	516	594	1,017
N.B. 1966	16,201	2,041	2,630	2,858	2,424	1,736	593	554	484	486	594	668	1,134
1965	16,570	2,197	2,524	3,528	2,291	1,989	759	446	401	391	358	541	1,145
Que. 1966	94,493	10,612	14,215	14,792	12,732	10,562	5,164	4,291	3,592	3,526	3,793	4,467	6,746
1965	101,593	11,990	13,983	17,474	15,422	10,904	5,586	3,923	4,221	3,643	3,330	4,150	6,965
Ont. 1966	82,291	8,358	11,543	11,362	9,432	7,905	4,514	5,257	4,553	4,662	4,177	4,413	6,115
1965	86,234	10,364	11,527	13,747	11,317	7,884	4,634	3,996	4,942	4,401	3,493	4,196	5,731
Man. 1966	11,481	1,903	1,800	2,009	1,434	1,233	514	373	377	325	284	421	809
1965	13,243	1,739	2,031	2,391	2,058	1,366	662	428	441	375	351	468	934
Sask. 1966	8,631	1,162	1,529	1,593	1,127	743	309	229	207	188	181	270	1,092
1965	9,487	1,447	1,641	1,870	1,541	862	366	223	236	203	196	253	649
Alta. 1966	11,771	1,496	1,957	1,908	1,550	1,240	722	501	412	459	432	558	535
1965	15,033	2,123	2,192	2,491	2,249	1,583	893	574	512	464	421	526	1,004
B.C. 1966	33,535	4,665	4,313	4,628	3,452	2,891	1,730	1,468	1,301	1,612	1,772	2,234	3,471
1965	32,317	5,096	5,013	5,235	3,551	2,940	1,607	1,392	1,191	1,226	1,274	1,471	2,320

TABLE V. Average Weekly Benefit Rate(1), by Province and Month, 1966 and 1965

Province	12 month average	Jan.	Feb.	Mar.	Apr.	May	June	July	Aug.	Sept.	Oct.	Nov.	Dec.
	dollars												
CANADA 1966	24.52	24.86	25.14	24.98	24.76	23.93	23.78	23.68	23.60	23.93	23.82	24.19	24.81
1965	24.54	25.02	24.92	24.86	24.87	24.40	24.14	23.83	23.39	23.55	23.70	23.77	24.46
Nfld. 1966	24.65	24.75	24.91	24.96	25.43	24.20	24.35	22.25	24.22	24.81	24.86	25.34	22.70
1965	24.42	24.72	23.36	24.82	25.39	25.19	24.64	24.42	21.10	21.87	21.98	23.16	24.31
P.E.I. 1966	23.42	23.65	23.73	23.65	23.68	22.47	21.22	21.94	22.17	21.99	21.88	22.25	24.17
1965	22.61	22.79	22.87	22.88	22.93	22.19	21.15	20.53	21.15	20.58	20.90	21.59	22.96
N.S. 1966	23.36	23.78	24.06	23.73	23.29	22.72	22.32	22.48	22.85	22.35	22.42	23.03	23.65
1965	22.63	22.55	22.60	23.25	22.62	22.16	22.40	22.61	21.97	22.24	22.96	22.19	22.54
N.B. 1966	23.70	23.39	23.74	23.86	24.34	23.84	23.29	23.23	23.17	23.42	23.20	23.18	23.67
1965	23.22	22.88	23.31	23.52	23.57	23.54	23.62	22.76	22.22	21.90	22.33	22.02	23.23
Que. 1966	24.78	24.65	25.58	25.60	25.25	24.59	24.59	23.60	23.27	23.37	23.43	24.00	24.93
1965	24.98	25.35	25.65	25.70	25.54	25.20	24.95	24.27	23.21	23.29	23.41	23.49	24.10
Ont. 1966	24.45	24.66	25.00	24.73	24.38	23.82	23.29	24.47	24.15	24.62	24.18	24.34	24.87
1965	24.28	24.56	24.72	24.47	24.46	23.79	23.62	23.98	23.87	24.20	24.09	24.19	24.18
Man. 1966	24.05	25.10	25.23	24.84	24.51	22.37	22.34	21.16	21.75	21.86	22.19	22.92	25.42
1965	24.95	25.77	25.42	25.99	25.05	24.29	23.18	22.79	22.97	22.96	23.81	24.33	25.79
Sask. 1966	23.93	25.04	24.87	24.57	24.35	22.39	22.77	21.35	21.53	21.69	21.75	23.33	23.79
1965	24.66	25.98	25.33	24.87	24.80	24.16	22.92	21.26	22.92	21.95	22.21	22.73	25.69
Alta. 1966	24.13	25.32	25.21	24.84	24.72	23.24	23.27	22.52	22.85	22.76	22.32	22.25	24.06
1965	24.98	25.92	25.46	24.38	25.33	25.09	24.97	23.74	23.42	23.36	23.67	24.16	26.14
B.C. 1966	25.54	26.95	26.10	25.76	25.29	24.04	24.37	23.80	24.25	24.94	25.36	25.75	26.53
1965	25.56	26.95	26.43	25.44	25.27	24.77	24.34	23.94	24.14	24.26	24.89	24.97	26.79

(1) Including partial weeks.

TABLE VI. Initial and Renewal Claims for Unemployment Insurance Benefit
by Month, February 1942 - December 1966

Year	Total 12 months	Jan.	Feb.	Mar.	Apr.	May	June	July	Aug.	Sept.	Oct.	Nov.	Dec.
thousands													
1942	26.9	-	4.8		2.9	2.8	4.6	2.7	1.9	1.1	1.1	1.7	3.3
1943	36.7	4.6	4.8	5.0	4.0	2.0	1.8	1.1	1.4	1.0	1.5	2.9	6.6
1944	90.9	11.8	12.3	10.7	6.5	4.7	3.2	3.1	3.2	3.7	6.2	11.8	13.8
1945	296.4	20.4	15.0	13.3	8.4	8.9	10.9	10.9	20.6	40.5	36.7	53.3	57.6
1946	488.7	71.9	59.1	50.7	35.8	34.8	30.6	27.6	25.1	28.6	34.9	37.1	52.5
1947	442.9	63.7	47.1	43.7	35.9	27.6	21.4	20.0	17.3	20.9	29.4	42.4	73.6
1948	649.1	100.3	76.7	63.9	49.0	33.6	31.5	30.5	25.0	28.1	38.1	66.4	105.9
1949	933.9	126.6	93.5	88.8	58.1	52.7	44.8	43.5	50.3	51.9	69.3	114.9	139.4
1950	1,150.2	182.1	109.3	211.4	80.4	71.6	51.3	43.9	61.5	49.2	62.2	93.0	134.2
1951	1,144.1	172.6	110.5	111.1	75.2	56.4	58.2	59.0	57.9	62.5	82.9	122.6	175.0
1952	1,391.3	212.7	141.3	155.5	101.0	83.8	68.8	75.3	61.0	64.7	88.0	123.4	215.9
1953	1,679.7	223.7	172.6	181.5	117.9	71.5	72.8	75.9	74.1	85.6	123.2	188.9	292.3
1954	2,102.2	293.2	216.1	250.8	159.5	113.4	114.8	106.3	112.7	109.5	127.6	187.7	310.6
1955	1,929.8	311.0	238.7	247.1	155.9	97.6	90.4	81.6	88.6	87.6	94.7	159.8	276.7
1956	1,625.4	263.8	188.6	176.5	139.1	84.1	55.2	73.5	75.0	65.0	87.9	151.4	265.2
1957	2,373.2	361.1	192.7	195.2	163.5	104.3	86.4	114.1	115.3	124.9	167.4	249.1	499.2
1958	2,780.5	367.4	243.9	253.3	217.5	165.1	155.7	167.4	139.7	157.6	191.2	246.6	475.2
1959	2,428.3	317.5	220.9	230.1	206.9	134.4	107.1	122.3	102.4	115.1	151.2	278.6	441.6
1960	2,700.4	306.6	240.3	283.5	214.6	165.6	128.5	140.4	149.6	140.3	178.2	304.4	448.3
1961	2,460.5	344.2	234.6	259.4	209.6	162.1	112.8	126.2	121.2	122.0	158.1	252.6	357.9
1962	2,192.2	320.2	205.6	225.8	181.3	138.4	93.5	112.4	98.8	98.3	150.4	243.6	323.8
1963	2,038.0	319.4	188.5	195.9	175.6	122.9	82.8	112.9	86.2	92.9	126.2	189.4	345.3
1964	1,859.9	258.6	171.6	182.3	175.4	105.2	86.8	108.9	79.0	85.8	120.9	169.0	316.4
1965	1,628.2	230.2	160.0	183.2	151.0	93.3	72.0	86.1	83.9	71.8	83.1	151.5	262.2
1966	1,547.7	225.0	150.3	159.0	119.9	91.0	68.4	87.1	83.6	73.0	86.2	152.7	251.5

TABLE VII. Claimants Reporting to Local Offices on the Last Working Day of each Month,
September 30, 1943 to December 31, 1966

Year	12 month average	Jan.	Feb.	Mar.	Apr.	May	June	July	Aug.	Sept.	Oct.	Nov.	Dec.
thousands													
1943	-									1	1	2	6
1944	10	12	16	16	12	7	5	4	5	6	8	13	19
1945	41	27	30	27	19	17	17	19	29	48	62	85	113
1946	98	146	162	155	124	99	82	69	62	58	63	67	87
1947	71	106	112	107	86	63	50	43	39	39	45	62	102
1948	95	145	153	142	112	77	62	53	47	47	60	88	151
1949	149	203	216	198	150	115	95	94	94	95	115	172	243
1950 total	188	313	304	368	230	166	127	106	111	89	102	139	202
% S.B.				23									3
1951 total	167	256	253	236	149	101	101	100	101	109	128	187	288
% S.B.		11	14	18									3
1952 total	219	358	351	352	249	182	149	144	125	109	128	182	304
% S.B.		9	11	13									4
1953 total	253	376	389	379	240	165	142	134	134	143	185	283	452
% S.B.		11	14	17									4
1954 total	357	556	559	561	379	293	245	228	223	214	236	307	479
% S.B.		10	14	18									7
1955 total	319	587	620	605	354	241	186	168	153	145	163	220	388
% S.B.		14	21	26									12
1956 total	272	477	511	511	292	189	136	138	132	128	139	215	398
% S.B.		23	28	29									7
1957 total	380	546	572	559	374	250	205	206	209	227	268	403	744
% S.B.		13	18	19									12
1958 total	552	835	869	860	722	551	445	301	295	283	324	419	715
% S.B.		20	24	27	31	33	30						18
1959 total	454	785	796	767	611	279	221	226	210	202	251	418	686
% S.B.		26	31	34	37								17
1960 total	518	783	814	823	715	364	296	294	280	280	330	485	754
% S.B.		23	27	30	32								18
1961 total	487	847	873	838	713	341	267	255	229	229	269	386	601
% S.B.		24	29	32	35								18
1962 total	414	699	719	687	564	264	214	212	199	198	244	374	592
% S.B.		25	29	32	34								16
1963 total	402	704	720	685	566	271	220	219	193	186	219	303	532
% S.B.		23	27	30	33								15
1964 total	357	599	607	597	498	250	202	205	182	174	215	275	478
% S.B.		23	27	30	32								15
1965 total	322	548	559	539	463	229	181	184	172	157	170	245	418
% S.B.		22	26	30	31								16
1966 total	315	512	530	498	414	218	181	196	187	165	184	266	423
% S.B.		22	25	29	30								14

Note: S.B. - Seasonal benefit.

TABLE VIII. Amount of Benefit Paid(1), by Month, 1942 to 1966

Year	12 month total	Jan.	Feb.	Mar.	Apr.	May	June	July	Aug.	Sept.	Oct.	Nov.	Dec.
millions of dollars													
1942	0.37	-	(2)	0.03	0.04	0.05	0.04	0.04	0.04	0.03	0.03	0.03	0.04
1943	0.94	0.07	0.13	0.20	0.14	0.13	0.07	0.05	0.03	0.02	0.02	0.03	0.05
1944	3.29	0.13	0.30	0.76	0.36	0.47	0.25	0.14	0.11	0.12	0.13	0.18	0.34
1945	14.57	0.55	0.82	1.52	0.59	0.67	0.58	0.60	0.69	0.88	1.71	2.51	3.45
1946	51.08	4.49	5.90	7.21	7.01	5.22	4.47	3.30	2.86	3.40	2.46	2.24	2.51
1947	32.04	4.01	3.92	4.48	3.78	3.07	2.15	1.96	1.52	1.51	1.54	1.56	2.54
1948	40.27	3.92	5.02	6.63	5.18	3.67	2.60	2.08	1.84	1.69	1.76	2.28	3.59
1949	69.35	6.73	8.16	10.40	7.61	5.51	4.11	3.37	3.72	3.67	3.85	5.05	7.18
1950	98.98	11.78	13.61	16.64	13.71	10.50	6.66	4.76	4.41	3.84	3.57	4.18	5.31
1951	76.66	9.83	10.68	12.14	8.35	5.66	3.51	3.43	3.67	3.46	3.90	5.11	6.92
1952	118.83	13.98	15.57	16.89	13.95	10.39	6.73	6.29	6.24	5.71	5.71	6.44	10.93
1953	157.97	18.43	20.60	24.00	19.19	12.39	8.41	7.15	6.41	6.74	7.60	10.17	16.88
1954	241.11	25.15	29.68	37.19	29.84	21.13	15.72	12.72	12.06	12.40	11.78	14.02	19.43
1955	229.12	28.37	34.90	45.44	33.78	20.02	12.64	8.94	8.73	8.18	7.54	8.66	11.94
1956	210.33	24.63	32.19	38.17	33.20	19.16	9.93	7.93	8.17	7.09	8.07	9.28	12.53
1957	305.08	33.44	38.60	44.13	40.39	26.27	14.36	13.80	13.03	13.81	16.33	18.99	31.93
1958	492.90	60.76	63.31	72.38	66.68	51.65	36.99	26.82	19.49	19.85	20.27	21.14	33.56
1959	406.10	58.65	58.08	65.87	59.97	40.45	18.16	14.53	13.12	13.37	13.77	17.48	32.66
1960	481.84	54.35	62.59	74.85	61.77	52.21	26.84	19.70	21.36	21.19	20.65	26.58	39.77
1961	493.97	67.66	70.99	85.19	64.54	58.70	25.89	18.55	18.86	16.08	17.12	20.94	29.45
1962	409.21	57.80	57.99	68.83	51.65	45.41	18.71	14.51	15.88	12.66	15.75	18.93	31.09
1963	394.16	58.56	58.74	61.29	57.58	41.15	15.99	15.51	14.01	12.53	13.99	15.47	29.36
1964	344.39	46.41	50.13	53.55	52.58	33.12	16.54	14.09	13.20	12.79	12.84	14.65	24.50
1965	312.11	39.85	45.33	55.59	43.31	31.66	16.23	11.83	12.79	11.50	10.22	12.61	21.18
1966	295.30	35.91	44.30	46.16	37.47	29.96	14.71	13.66	11.82	12.26	12.34	14.29	22.43

(1) Benefit paid under the seasonal benefit provisions is included. The dates during which these provisions were operative, maximum weeks payable each period and amount of benefit paid are as follows:

February 28 to April 15, 1950 - 6 weeks - \$4.5 million.
January 1 to March 31, 1951 - 13 weeks - \$3.9 million.
January 1 to March 31, 1952 - 13 weeks - \$4.6 million.
January 1 to April 15, 1953 - 15 weeks - \$9.2 million.
January 1 to April 15, 1954 - 15 weeks - \$14.1 million.
January 1 to April 15, 1955 - 15 weeks - \$28.9 million.
January 1 to April 21, 1956 - 16 weeks - \$38.1 million.
January 1 to April 20, 1957 - 16 weeks - \$29.6 million.
December 1, 1957 to June 28, 1958 - 30 weeks - \$109.8 million.
December 1, 1958 to May 16, 1959 - 24 weeks - \$98.4 million.
November 30, 1959 to May 21, 1960 - 25 weeks - \$99.1 million.
November 28, 1960 to May 20, 1961 - 25 weeks - \$112.1 million.
November 27, 1961 to May 19, 1962 - 25 weeks - \$88.9 million.
November 19, 1962 to May 18, 1963 - 25 weeks - \$86.9 million.
November 25, 1963 to May 16, 1964 - 25 weeks - \$75.1 million.
November 29, 1964 to May 15, 1965 - 25 weeks - \$68.2 million.
November 28, 1965 to May 21, 1966 - 25 weeks - \$56.1 million (preliminary).

(2) Less than \$10,000.

APPENDIX 1

Changes in Methodology for Estimating Average Weekly Beneficiaries

Statistics emanating from administrative procedures are generally integrated with the system. It follows then that as procedures are amended the methodological approach to the statistics may also undergo a change.

Over the years, the method used to obtain an estimate of beneficiaries has undergone considerable variation. When the Act became operative in July 1941, the statistical program included arrangements to obtain a monthly count of beneficiaries. In July 1949, however, as the result of an administrative change in the method of recording benefit payments, this figure was no longer available. Instead, information was provided on the number of payments (equivalent to the number of beneficiaries) in a particular week of each month.

Subsequent developments leading to the gradual extension of the bi-weekly system of claims payments necessitated a further methodological change. In February 1955 a new concept was adopted, whereby an average weekly estimate for the month was prepared by applying an appropriate divisor to the number of payments for the month.

A further amendment, introduced late in 1965, put all continuing claims on a mail system. Under the amended procedure all payments are mailed to the claimant who is provided with a document containing questions relating to his employment and earnings. This enables the Commission to determine his benefit entitlement. The claimant is instructed to forward the completed document to the Commission at the end of the period covered by the report. In general, then, these reports are received in local offices early in the week. As a result, pay days are no longer scheduled over each day of the week but tend to be concentrated in the early part of the week. In view of this latest development, a slight adjustment in the divisor applied to the number of payments is indicated. The estimates for 1966 have been revised, accordingly.

Revised Estimates of Beneficiaries for 1966

Province	Jan.	Feb.	March	April	May	June	July	Aug.	Sept.	Oct.	Nov.	Dec.
Thousands												
CANADA	361.2	440.6	369.5	378.3	278.2	137.5	144.2	100.2	128.2	129.5	118.1	226.0
Nfld.	31.3	29.4	27.6	25.3	16.7	4.1	3.4	2.6	4.1	4.4	4.2	13.9
P.E.I.	5.0	5.9	5.8	5.4	2.2	0.6	0.6	0.4	0.5	0.5	0.5	2.1
N.S.	22.2	29.3	24.2	24.0	15.7	6.5	7.0	4.7	6.3	6.9	5.8	11.3
N.B.	21.8	27.7	24.0	24.9	16.2	5.7	6.0	4.2	5.2	6.4	5.8	12.0
Que.	107.6	138.9	115.6	126.0	95.5	46.7	45.4	30.9	37.7	40.5	37.2	67.7
Ont.	84.7	115.4	91.9	96.7	73.8	43.1	53.7	37.7	47.3	43.2	36.3	61.5
Man.	19.0	17.8	16.2	14.6	12.2	5.1	4.4	3.5	3.7	3.2	3.7	8.0
Sask.	11.6	15.4	13.0	11.6	7.4	3.0	2.7	1.9	2.2	2.1	2.3	11.5
Alta.	14.8	19.4	15.4	15.7	11.9	6.9	5.6	3.6	5.0	4.8	5.0	5.6
B.C.	43.3	41.3	35.9	34.1	26.7	15.8	15.4	10.7	16.2	17.5	17.4	32.7

Glossary of Terms

Insured population: For purposes of this report, the insured population is defined as the number of persons estimated as currently in contact with the Unemployment Insurance Commission either as contributors or as claimants. The estimates are revised once a year when data from the book renewal are available.

Employed population: The number of persons estimated as currently contributing under the scheme. Estimates are based on a 10 per cent sample and hence are subject to sampling variability.

Claimant population: The count of persons currently reporting to the local offices as at the end of the month. An exception occurs in the month which serves as a benchmark, i.e., May or June, when the claimant count represents the number of persons reporting to local offices as claimants during the first two weeks of book renewal.

Initial claim: An application for benefit from a person for whom there is no benefit period in existence. This category includes both regular and seasonal claims, since it is impossible to determine, at the time of filing a claim, the type of benefit for which the claimant will subsequently qualify. On an initial claim the contribution history for the two years preceding the claim is examined. This is required in order to test attachment to insured employment and thus determine the type of benefit for which the claimant is eligible, if at all. In cases of eligibility, the record of the qualifying period is used to calculate the weekly rate of benefit and maximum entitlement for the benefit period. Only one initial claim is required for each benefit period.

Benefit period: A period commencing with the week in which the initial claim is made, provided the qualifying conditions are fulfilled. The maximum length of the benefit period is 52 weeks, in the case of claimants qualifying under the regular terms of the Act. Seasonal benefit periods may be established only from December 1 to mid-May, with a maximum length of 24 weeks. In either case, however, the benefit period terminates with exhaustion of benefit.

Renewal claim: An application for benefit from an insured person during the currency of a benefit period. As in the case of initial claims, this category includes renewal claims from all classes of claimants, i.e., regular, seasonal and fishing.

Initial and renewal claims filed: An approximation of the number of new cases of recorded unemployment among insured persons during a period. However, an initial claim representing a request for re-establishment of a benefit period with no actual interruption in the period on claim would not constitute a new case of unemployment. To the extent that such claims are filed in any month, the total overstates the number of new cases.

Revised claims: Those, other than initial or renewal, which must be considered by an insurance officer, e.g., involving dependency, extension of qualifying period, etc. A revised claim is thus an administrative device to initiate action for reconsideration of an existing initial or renewal claim.

Claimants currently reporting to local offices: All persons currently reporting to local offices to claim unemployment insurance benefit, either regular, seasonal or fishing. Under the Unemployment Insurance Act a person may claim benefit for any week during which he did not work a full working week.

Number of weeks on claim: The cumulative number of weeks during which a claimant has reported to prove unemployment during the current period on claim. The count commences with the week in which the initial (or renewal) claim is filed and continues unbroken so long as the claimant continues to report as directed. Cases occur in which a spell of unemployment extends beyond the termination of a benefit period and a new benefit period is immediately established with no actual interruption of the period on claim. In such cases the cumulative number of weeks is transferred from the previous claim document to that covering the subsequent benefit period and the count continued. This procedure applies also for contiguous periods on regular and seasonal benefit. Excluded from the count are any weeks for which a claimant reported "non-availability" during a complete week.

Entitled to benefit: For purposes of this report, this category comprises those adjudications arising from initial claims on which a benefit period (regular, seasonal or fishing) is shown as established and no disqualification imposed and adjudications indicating "approval" on renewal claims, either regular, seasonal or fishing.

Not entitled to benefit: Claimants disqualified on initial and renewal claims, and those for whom the adjudication on an initial claim was to the effect that the claimant was ineligible to establish either a regular, seasonal or fishing benefit period.

Benefit period not established: The minimum contribution requirements for any type of benefit have not been met. This figure thus represents the net total of persons with insufficient contributions to establish a benefit period under either the regular, seasonal or fishing benefit provisions, based on decisions arising from initial claims only. Subsequent decisions arising from a revised claim and constituting a reversal of the initial adjudication are not taken into account, but such decisions would reduce the number of benefit periods not established.

Disqualification: A disqualification is imposed because of circumstances surrounding the claim which render the claimant ineligible for the receipt of benefit either for a stated period or so long as the condition causing the disqualification continues.

Where it is established that loss of employment was voluntary and without just cause on the part of the claimant, i.e., he left employment of his own volition or was dismissed because of misconduct, the maximum disqualification is six weeks; claimants participating in a labour dispute in which they are directly interested are disqualified for the duration of the work stoppage. In assessing the number of cases of disqualification, no distinction is made as to the type of claim, hence disqualifications arising from revised claims are included. The cases mentioned here serve as examples only and do not constitute a complete summary of conditions under which a disqualification may be imposed. Sections 59-66 of the Act contain a description of these conditions.

Weeks compensated: Calendar weeks in respect of which some benefit, either regular, seasonal or fishing, was paid. A compensated week is counted in the month in which the copy of the payment voucher is received in the District Treasury Office, which is not necessarily the month in which the week of unemployment occurred.

Amount of benefit: The sum of all benefit payments made during the month. This comprises regular, seasonal or fishing benefit.

Complete week: A week in respect of which a claimant received the full weekly rate of benefit authorized on that benefit period.

Partial week: A week for which a claimant received less than the full weekly rate authorized. A partial week may be due to excess earnings resulting in a reduced payment in direct proportion to the amount of such earnings. If a claimant was "not available for work" on any day or days during a week, a reduction will be made in the weekly rate proportionate to the number of days of "non-availability". A reduction will occur also if a portion of a week was designated as part of the prescribed waiting period.

Excess earnings: Earnings during a week in excess of the allowable earnings for a claimant's weekly benefit rate. As an example, a claimant whose weekly rate is \$30.00 may earn up to \$15.00 in a week without suffering a reduction in benefit; however, in a week where he earns \$17.00 his benefit will be reduced to \$28.00.

Beneficiaries: Persons who received one or more benefit payments. The estimate, based on the total number of payment documents for the month, represents the average weekly number of beneficiaries.

Seasonal benefit: Benefit payable during the period commencing with the Sunday prior to December 1 and ending with the Saturday after May 15, to

certain classes of claimants unable to fulfil the requirements under the regular benefit provisions of the Act. Claimants in Class A must prove 15 contributions since the Saturday preceding the 31st day of March immediately prior to the date of claim, while qualification under class B is contingent upon a regular benefit period having terminated since the Saturday following the 15th day of May immediately prior to the claim.

Fishermen: For purposes of regular benefit, a fisherman is a claimant showing five or more fishing contribution weeks during the last 52 weeks. For purposes of seasonal benefit, however, any claimant whose qualifying contributions include even one fishing contribution week is classed as a fishing claimant.

Fishing contribution week: Any week for which a fishing contribution is recorded, whether or not a contribution was also made in respect of other insured employment. Specially designed stamps are used to record insured employment in fishing and employers using the bulk pay method must report employee's fishing contributions separately from those relating to other insurable employment.

Industrial Classification of persons filing new claims for Unemployment Insurance: This information is based on a sample of documents in respect of initial claims filed in local offices during a month. To ensure that all such claims have an equal chance of being included in the study, the documents are accumulated until the end of the third week following the month in which the claim was filed.

The sampling ratio varies from one hundred per cent in the Atlantic provinces (during the period of low claim) to five per cent in Ontario. The sample embraces all new initial claims without regard to benefit status, i.e. failures as well as disqualifications are included. However, it excludes initial claims classed as transitional, i.e., those taken on behalf of persons terminating one benefit period and seeking re-establishment of credits, since such claims are not new cases of separation from employment.

At the present time only the new separations requiring an **initial claim** are included in this study, as these are the only documents forwarded to the Bureau for analysis. The ratio of initial to renewal claims fluctuates with the claim load, so that during the months of heavy claim, it is approximately 3:1.

Geographical classification: The provinces as defined in this bulletin are administrative entities. Hence, Ontario excludes Sioux Lookout for which data are included with Manitoba; British Columbia includes Whitehorse; Quebec excludes Magdalen Islands for which data are included in New Brunswick.