

CATALOGUE No.

73-001

MONTHLY

V. 26, NO. 10 (1967/OCT.)



CANADA

C001

V. 26, NO. 10

1967(OCT)

# STATISTICAL REPORT ON THE OPERATION OF THE UNEMPLOYMENT INSURANCE ACT

OCTOBER 1967

(Compiled from material supplied by the Unemployment Insurance Commission)

Published by Authority of  
The Minister of Trade and Commerce



DOMINION BUREAU OF STATISTICS

Labour Division

Unemployment Insurance and Manpower Section

January 1968  
8006-509

Price: 20 cents  
\$2.00 a year

Vol. 26—No. 10

The contents of this document may be used freely but DBS should be credited when republishing all or any part of it.

## TABLE OF CONTENTS

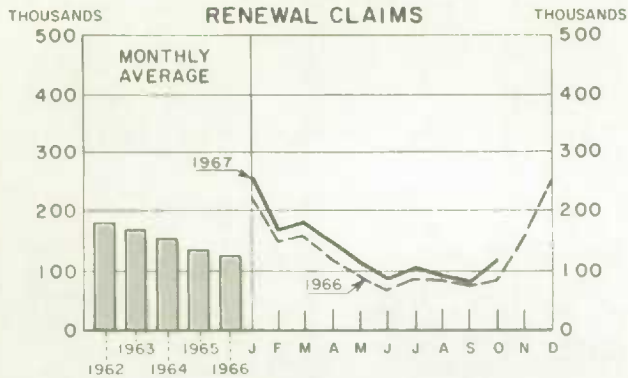
	Page
Chart, Unemployment Insurance Activities .....	3
Commentary:	
Claims and Benefit Payments During October .....	4
Industrial Classification of Persons Filing New Claims in September .....	5
 <u>List of Tables</u>	
Consolidated Data on Claims for Regular and Seasonal Benefit:	
Summary Table .....	8
Table:	
1. Estimates of the Insured Population under the Unemployment Insurance Act .....	9
2. Number of Initial and Renewal Claims Filed in Local Offices in Each Province .....	9
3. Claimants Currently Reporting to Local Offices by Number of Weeks on Claim, Province and Sex .....	10
4. Disposition of Initial and Renewal Claims, and Claims Pending at the End of the Month, by Province .....	11
5. Number of Claimants Not Entitled to Benefit in Each Province, with Chief Reasons for Non-entitlement .....	12
6. Estimates of the Number of Beneficiaries, by Province .....	13
7. Benefit Payments, Showing Number of Weeks and Amount Paid, by Province .....	13
8. Number of Weeks Compensated, Classified as to Complete and Partial Weeks, and Showing Separately the Number of Partial Weeks Due to Excess Earnings, by Province .....	14
Glossary of Terms .....	15

Historical data since 1941 are contained in the July 1966 issue in this series, while annual data for the calendar years 1966 and 1965 are included in the January 1967 issue in this series.

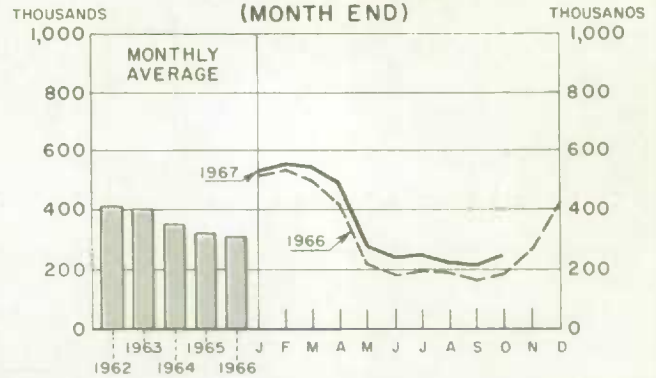
For information regarding the personal characteristics, occupational and industrial status of both the insured population and persons establishing benefit periods, see the "Annual Report on Benefit Periods Established and Terminated under the Unemployment Insurance Act", DBS Catalogue No. 73-201.

# UNEMPLOYMENT INSURANCE ACTIVITIES

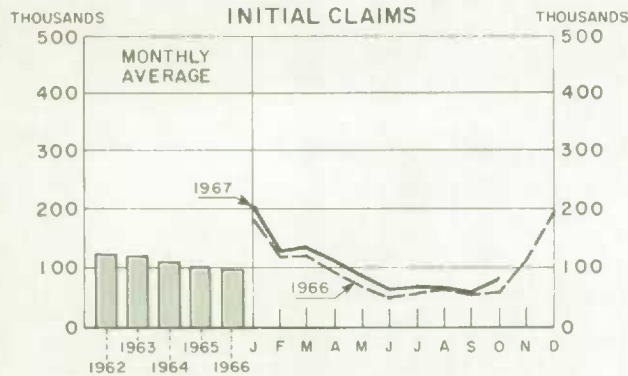
## INITIAL AND RENEWAL CLAIMS



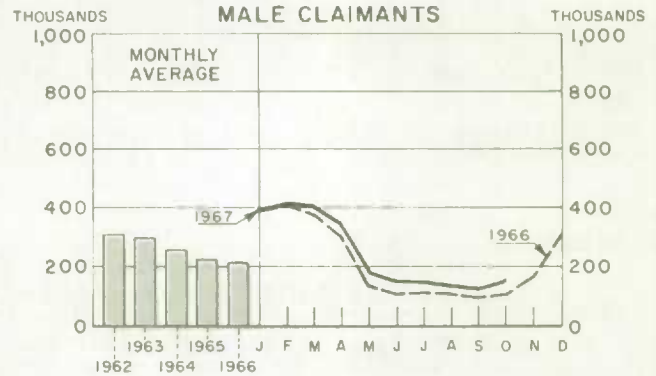
## TOTAL CLAIMANTS (MONTH END)



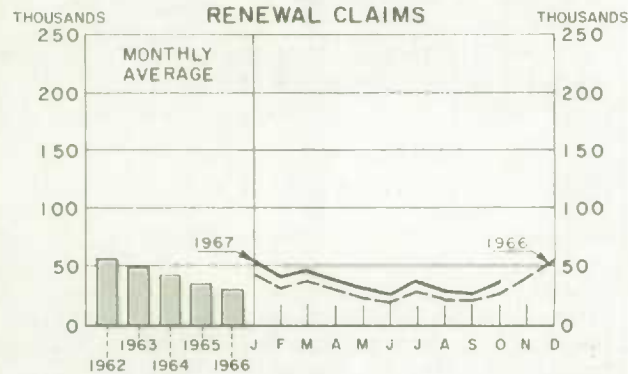
## INITIAL CLAIMS



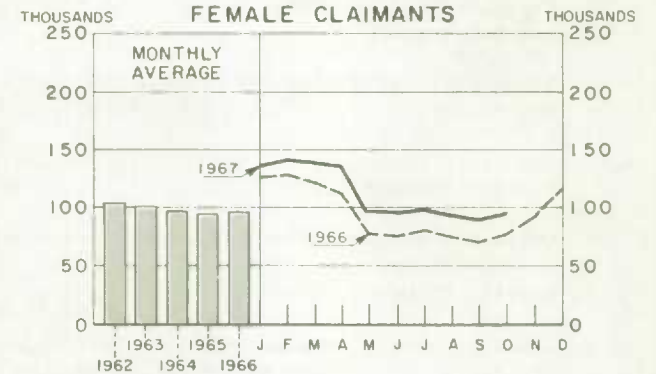
## MALE CLAIMANTS



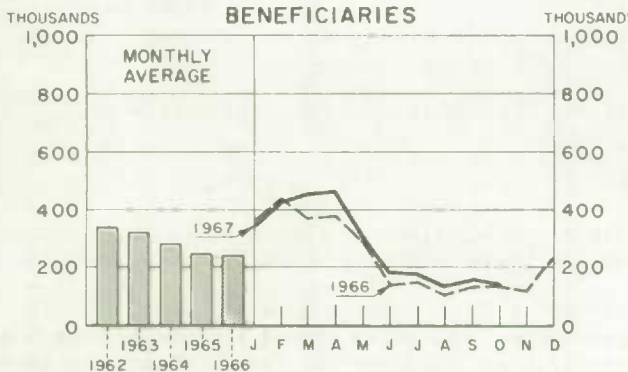
## RENEWAL CLAIMS



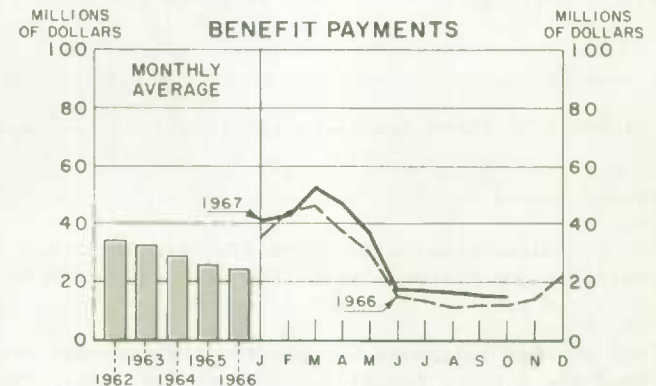
## FEMALE CLAIMANTS



## BENEFICIARIES



## BENEFIT PAYMENTS



# CLAIMS AND BENEFIT PAYMENTS

OCTOBER 1967

## Claimants at month-end

Claimants for unemployment insurance benefit numbered 242,500 on October 31. This exceeded by 15 per cent the 210,900 recorded on September 29, 1967, and by 32 per cent the 184,300 for October 31, 1966. In comparison both with last month and with the same period one year ago males accounted for approximately three-quarters of the increase.

Half of the claimants reporting at the end of October 1967 were recorded in the 1-4 weeks-on-claim category, and of these almost 70 per cent were males.

## Initial and renewal claims

A total of 114,900 initial and renewal claims for benefit were received in local offices across Canada during October, in comparison with 82,700 in September and 86,200 one year ago. Ninety-five per cent of the October claims represented separations from employment during the month.

## Beneficiaries and benefit payments

The average weekly number of beneficiaries during October was estimated at 138,500 in comparison with 160,100 in September and 129,500 one year ago. Benefit payments during October totalled \$15.5 million versus \$15.8 million in September and \$12.3 million in October 1966. The average weekly payment was \$24.86 for October, \$24.62 for September and \$23.82 for October 1966.

## Provincial data

Increases over last month in the month-end claimant count occurred in all provinces. The rate of increase in the western Provinces was significantly greater than the overall rate of 15 per cent. The count increased by 28 per cent in Saskatchewan, 24 per cent in Alberta, and 27 per cent in British Columbia. In Saskatchewan the count of male claimants increased by over 50 per cent. However the proportion of male claimants in the Prairie Provinces continues to be below the national average.

Compared with October 31, 1966 the claimant count generally decreased in the Atlantic Provinces while increases occurred elsewhere. Ontario ranked first with an increase of 56 per cent. Amongst males, the increase in Ontario was 75 per cent, double the national rate. In Quebec the number of male claimants increased by almost one half.

While the claimant count remained unchanged in Ontario from September 30 to October 31, 1966, there was a 12 per cent increase during this interval in 1967. Layoffs in the transportation segment of the manufacturing industry probably account for a large part of the increase this year.

Percentage Changes in Month-end Claimant Count

	September 29 to October 31, 1967			October 31, 1966 to October 31, 1967			September 30 to October 31, 1966		
	Total	Male	Female	Total	Male	Female	Total	Male	Female
CANADA .....	+ 15	+ 20	+ 8	+ 32	+ 38	+ 23	+ 12	+ 13	+ 10
Newfoundland .....	+ 19	+ 24	+ 7	-	- 4	+ 13	+ 29	+ 35	+ 9
Prince Edward Island ....	+ 6	+ 1	+ 11	+ 1	- 16	+ 25	+ 8	+ 6	+ 11
Nova Scotia .....	+ 7	+ 10	-	- 6	- 7	- 4	+ 9	+ 11	+ 4
New Brunswick .....	+ 12	+ 8	+ 18	- 18	- 25	- 4	+ 20	+ 20	+ 22
Quebec .....	+ 14	+ 18	+ 9	+ 37	+ 49	+ 19	+ 16	+ 17	+ 14
Ontario .....	+ 12	+ 16	+ 6	+ 56	+ 75	+ 37	-	- 4	+ 4
Manitoba .....	+ 13	+ 27	+ 1	+ 25	+ 33	+ 18	+ 20	+ 30	+ 12
Saskatchewan .....	+ 28	+ 51	+ 12	+ 23	+ 34	+ 14	+ 16	+ 32	+ 5
Alberta .....	+ 24	+ 42	+ 8	+ 17	+ 31	+ 4	+ 16	+ 20	+ 13
British Columbia .....	+ 27	+ 37	+ 11	+ 14	+ 11	+ 20	+ 24	+ 27	+ 18

The increase over September in the volume of claims filed was general throughout the country. As was the case for the month-end claimant count the rates of increase in Newfoundland and the Prairie Provinces were considerably higher than in other areas. During the same interval in 1966 the rate of increase in Newfoundland was 3 times the overall rate. However the numbers involved in these provinces are relatively small.

Although at the national level claims filed increased by one third over October 1966, the Atlantic provinces showed a decrease. Ontario with 65 per cent and Manitoba with 50 per cent ranked highest in the year-over-year increase.

#### Percentage Changes in Claims Filed, by Province

	September to October 1967			October 1966 to October 1967			September to October 1966		
	Total	Initial	Renewal	Total	Initial	Renewal	Total	Initial	Renewal
CANADA .....	+ 39	+ 41	+ 35	+ 33	+ 32	+ 36	+ 18	+ 16	+ 22
Newfoundland .....	+ 54	+ 55	+ 51	- 4	- 8	+ 4	+ 56	+ 61	+ 45
Prince Edward Island ..	+ 32	+ 24	+ 62	- 12	- 11	- 15	+ 7	+ 17	- 13
Nova Scotia .....	+ 23	+ 25	+ 19	- 1	- 2	- 1	+ 17	+ 18	+ 14
New Brunswick .....	+ 45	+ 33	+ 75	- 16	- 14	- 19	+ 24	+ 23	+ 25
Quebec .....	+ 36	+ 34	+ 41	+ 32	+ 26	+ 46	+ 24	+ 22	+ 27
Ontario .....	+ 36	+ 42	+ 20	+ 65	+ 70	+ 54	+ 5	+ 1	+ 19
Manitoba .....	+ 59	+ 55	+ 73	+ 50	+ 48	+ 56	+ 20	+ 19	+ 22
Saskatchewan .....	+ 54	+ 56	+ 45	+ 35	+ 34	+ 39	+ 33	+ 29	+ 50
Alberta .....	+ 71	+ 70	+ 73	+ 31	+ 32	+ 26	+ 13	+ 9	+ 32
British Columbia .....	+ 42	+ 43	+ 41	+ 11	+ 5	+ 25	+ 25	+ 30	+ 15

#### Industrial Classification of Persons Separated from Employment and Filing Initial(1) Claims for Unemployment Insurance Benefit During September 1967

As indicated by initial claims, 35,100 separations from employment were recorded in September. Over 85 per cent of these were reported in the 3 provinces of Ontario (38 per cent), Quebec (34 per cent) and British Columbia (13 per cent); the manufacturing and construction industries accounted for 57 per cent.

The number of claims decreased by over 25 per cent from September 1966. Two-thirds of this decrease of 12,400 occurred in British Columbia and in the two central provinces.

(1) Initial claims taken on behalf of persons exhausting benefit and seeking re-establishment of credits are excluded. Excluded also are persons who separated from employment and filed renewal claims.



TABLE I. Percentage Distribution of Claims(1) by Industry and Province  
September 1967 and 1966

Industry group		Canada	Nfld.	P.E.I.	N.S.	N.B.	Que.	Ont.	Man.	Sask.	Alta.	B.C.
Total new cases (000's)	1967	35.1	0.5	(2)	1.1	1.0	11.9	13.5	0.8	0.5	1.0	4.7
	1966	47.5	1.2	(2)	1.8	1.8	14.4	16.3	1.2	0.8	2.2	7.9
Per cent distribution												
Forestry (mainly logging)	1967	1	4		1	6	1	(3)	2	1	1	3
	1966	2	4		2	4	2	1	-	-	1	4
Fishing(4) and trapping	1967	1	4		6	1	(3)	-	(3)	-	-	2
	1966	1	1		4	2	(3)	-	(3)	-	-	2
Mining .....	1967	1	3		2	2	1	(3)	2	3	3	1
	1966	1	2		4	2	1	1	2	3	3	3
Manufacturing .....	1967	43	18		33	32	44	51	27	15	22	33
	1966	36	15		29	28	39	42	29	13	22	32
Construction .....	1967	14	26		17	12	15	14	7	10	7	17
	1966	13	19		13	27	17	10	5	7	7	13
Transportation, communi- cation and other utili- ties .....	1967	7	12		8	11	6	5	14	17	10	9
	1966	9	28		11	8	6	5	12	17	13	15
Trade .....	1967	12	14		13	17	10	11	18	21	20	12
	1966	14	14		17	13	13	16	22	25	19	10
Service .....	1967	14	11		15	11	14	11	19	20	25	17
	1966	14	9		12	10	12	16	18	25	25	14
Public administration and defence .....	1967	3	4		3	4	3	3	5	4	6	3
	1966	5	7		6	4	6	4	8	3	7	4
Other .....	1967	5	2		4	5	5	5	7	9	7	4
	1966	5	2		3	3	5	6	5	8	4	4
All cases .....	1967	100	100		100	100	100	100	100	100	100	100
	1966	100	100		100	100	100	100	100	100	100	100

(1) See footnote (1) page 5

(2) Less than 500.

(3) Less than 1/2 of 1 per cent.

(4) Persons whose reported occupation under covered employment was "fisherman" were coded to the fishing industry even though the nature of business of the most recent employer was other than fishing. This differs from the general coding practice of assigning a single code on the basis of the principal activity of the employer. However, fishermen report themselves usually as self-employed.

TABLE II. Percentage Distribution of Claims, by Industry, Quarterly Intervals

	1967			1966	
	September	June	March	December	September
Total new cases (000's) .....	35.1	38.7	73.1	132.6	47.5
	Per cent distribution				
Forestry (mainly logging) .....	1	1	15	6	2
Fishing(2) and trapping .....	1	(1)	1	5	1
Mining .....	1	2	2	2	1
Manufacturing .....	43	42	31	35	36
Construction .....	14	16	18	25	13
Transportation, communication and other utilities .....	7	5	6	9	9
Trade .....	12	14	11	8	14
Service .....	14	13	8	6	14
Public administration and defence	3	3	6	3	5
Other .....	5	3	2	2	5
All cases .....	100	100	100	100	100

(1) Less than 1/2 of 1 per cent.

(2) See footnote (4) page 6.

.. Figures not available.

- Nil.

Summary Table

Activity	Oct. 1967	Sept. 1967	Oct. 1966	% change from		Cumulative data			
				Sept. 1967	Oct. 1966	January to October		12 months ending October	
						1967	1966	1967	1966
	thousands					thousands			
Insured population as at month-end .....	..	4,616	4,538	..	..	..	4,518*	..	4,499*
Initial and renewal claims filed:									
Total .....	115	83	86	+ 39	+ 33	1,353	1,144	1,757	1,557
Initial .....	79	56	60	+ 41	+ 32	990	862	1,298	1,177
Renewal .....	36	26	26	+ 35	+ 36	363	282	459	380
Claimants currently reporting to local offices .....	242	211	184	+ 15	+ 32	357*	309*	355*	312*
Beneficiaries (weekly average) .....	139	160	130	- 13	+ 7	279*	247*	261*	234*
Weeks compensated .....	623	641	518	- 3	+ 20	12,049	10,547	13,543	11,943
Benefit paid ..... \$	15,494	15,772	12,336	- 2	+ 26	306,178	258,588	342,892	292,386
Average weekly benefit ..... \$	24.86	24.62	23.82	+ 1	+ 4	25.41	24.52	25.32	24.48

\* Monthly average.



TABLE 1. Estimates of the Insured Population under the Unemployment Insurance Act

End of	Total(1)	Employed	Claimants
1967 - September .....	4,616,000	4,405,100	210,900
August .....	4,832,000	4,604,900	227,100
July .....	4,803,000	4,556,700	246,300
June .....	4,751,000	4,508,200	242,800
May .....	4,684,000	4,402,900	281,100
April .....	4,763,000	4,270,700	492,300
March .....	4,769,000	4,225,200	543,800
February .....	4,697,000	4,145,200	551,800
January .....	4,700,000	4,168,100	531,900
1966 - December .....	4,641,000	4,217,600	423,400
November .....	4,606,000	4,339,700	266,300
October .....	4,538,000	4,353,700	184,300
September .....	4,535,000	4,370,100	164,900

(1) Commencing March 31, 1967, agricultural workers are included, as coverage was extended to certain workers in this industry April 1, 1967.

TABLE 2. Number of Initial and Renewal Claims Filed in Local Offices in Each Province

Province	1967 - October - 1966					
	Total(1)	Initial	Renewal	Total	Initial	Renewal
CANADA .....	114,895	79,394	35,501	86,164	60,133	26,031
Newfoundland .....	2,743	1,886	857	2,871	2,049	822
Prince Edward Island .....	255	187	68	290	210	80
Nova Scotia .....	3,631	2,439	1,192	3,682	2,479	1,203
New Brunswick .....	3,441	2,251	1,190	4,098	2,624	1,474
Quebec .....	37,172	23,822	13,350	28,109	18,934	9,175
Ontario .....	41,444	30,409	11,035	25,067	17,888	7,179
Manitoba .....	2,851	2,159	692	1,907	1,462	445
Saskatchewan .....	1,812	1,440	372	1,341	1,073	268
Alberta .....	4,241	3,272	969	3,249	2,481	768
British Columbia .....	17,305	11,529	5,776	15,550	10,933	4,617

(1) In addition, revised claims received numbered 26,611.

TABLE 3. Claimants Currently Reporting to Local Offices by Number of Weeks on Claim, Province and Sex  
(Counted on last working day of the month)

Province and sex	Total claimants	Number of weeks on claim (based on 20 per cent sample)				Total claimants
		1-4	5-13	14-26	27 or more(1)	
	October 31, 1967					October 31, 1966
CANADA .....	242,454	120,119	56,375	40,276	25,684	184,302
Male .....	148,210	83,375	32,495	19,407	12,933	107,716
Female .....	94,244	36,744	23,880	20,869	12,751	76,586
Newfoundland .....	6,625	3,203	1,740	1,092	590	6,645
Male .....	4,992	2,631	1,261	702	398	5,200
Female .....	1,633	572	479	390	192	1,445
Prince Edward Island .....	701	196	223	199	83	695
Male .....	341	139	108	63	31	407
Female .....	360	57	115	136	52	288
Nova Scotia .....	8,875	3,839	1,959	1,669	1,408	9,427
Male .....	6,166	2,875	1,314	1,078	899	6,598
Female .....	2,709	964	645	591	509	2,829
New Brunswick .....	7,651	3,420	1,768	1,375	1,088	9,339
Male .....	4,768	2,178	1,027	848	715	6,334
Female .....	2,883	1,242	741	527	373	3,005
Quebec .....	80,389	38,780	20,442	13,515	7,652	58,506
Male .....	52,576	28,161	13,004	7,344	4,067	35,228
Female .....	27,813	10,619	7,438	6,171	3,585	23,278
Ontario .....	87,637	43,434	19,322	15,086	9,795	56,201
Male .....	49,103	28,351	9,993	6,340	4,419	28,054
Female .....	38,534	15,083	9,329	8,746	5,376	28,147
Manitoba .....	6,369	2,996	1,420	1,100	853	5,094
Male .....	3,296	1,814	680	466	336	2,481
Female .....	3,073	1,182	740	634	517	2,613
Saskatchewan .....	3,993	1,924	876	707	486	3,244
Male .....	1,924	1,203	343	174	204	1,436
Female .....	2,069	721	533	533	282	1,808
Alberta .....	8,134	4,225	1,595	1,353	961	6,970
Male .....	4,293	2,690	589	526	488	3,274
Female .....	3,841	1,535	1,006	827	473	3,696
British Columbia .....	32,080	18,102	7,030	4,181	2,767	28,181
Male .....	20,751	13,333	4,176	1,867	1,375	18,704
Female .....	11,329	4,769	2,854	2,314	1,392	9,477

(1) The bulk of the cases in this group were on claim from 27-39 weeks.

Note: Values less than 50 subject to relatively large sampling variability.

TABLE 4. Disposition of Initial and Renewal Claims and Claims Pending at the End of the Month, by Province

Province	Adjudicated					Pending	
	Total	Entitled to benefit		Not entitled to benefit		Initial	Renewal
		Initial	Renewal	Initial	Renewal		
	October 1967						
CANADA .....	102,938(1)	39,821	26,864	31,278	4,975	27,967	10,861
Newfoundland .....	2,325	873	615	701	136	774	274
Prince Edward Island .....	180	76	32	62	10	92	37
Nova Scotia .....	3,169	1,219	914	879	157	928	346
New Brunswick .....	2,989	1,052	949	874	114	867	348
Quebec .....	33,125	12,654	10,209	8,512	1,750	8,990	3,985
Ontario .....	37,883	14,910	8,292	13,099	1,582	10,243	3,782
Manitoba .....	2,408	1,034	509	775	90	724	208
Saskatchewan .....	1,536	630	264	593	49	532	139
Alberta .....	3,631	1,611	645	1,225	150	1,029	330
British Columbia .....	15,692	5,762	4,435	4,558	937	3,788	1,412
	October 1966						
CANADA .....	77,335	31,289	19,832	22,594	3,620	23,224	9,034
Newfoundland .....	2,532	1,145	647	643	97	797	290
Prince Edward Island .....	294	145	67	72	10	54	21
Nova Scotia .....	3,302	1,325	898	903	176	889	424
New Brunswick .....	3,767	1,436	1,315	864	152	964	410
Quebec .....	24,600	9,554	6,822	7,039	1,185	7,629	3,204
Ontario .....	23,298	9,541	5,585	7,124	1,048	6,741	2,367
Manitoba .....	1,662	704	310	580	68	499	164
Saskatchewan .....	1,164	481	190	448	45	360	88
Alberta .....	2,864	1,165	528	1,053	118	865	271
British Columbia .....	13,852	5,793	3,470	3,868	721	4,426	1,795

(1) In addition 26,051 revised claims were disposed of. Of these, 2,887 were special requests not granted and 1,265 were appeals by claimants. There were 6,223 revised claims pending at the end of the month.

TABLE 5. Number of Claimants Not Entitled to Benefit in Each Province during October 1967 and 1966  
with Chief Reasons for Non-entitlement

Chief reasons for non-entitlement		Canada	Nfld.	P.E.I.	N.S.	N.B.	Que.	Ont.	Man.	Sask.	Alta.	B.C.
Benefit period not established .....	1967(1)	15,061	393	31	476	544	5,033	4,743	375	318	597	2,551
	1966	11,980	387	34	484	565	3,960	3,449	270	224	503	2,104
Claimants disqualified .....	1967	30,183	717	58	899	735	8,220	12,975	825	621	1,263	3,870
	1966	22,526	668	79	965	684	6,916	7,646	666	502	1,091	3,309
Not unemployed .....	1967	470	30	1	16	19	159	114	30	25	25	51
	1966	530	9	1	22	21	249	122	20	23	19	44
Not capable of and not available for work .....	1967	8,087	235	23	255	257	2,226	2,939	375	325	506	946
	1966	6,896	155	22	258	174	2,089	2,494	274	238	389	803
Loss of work due to a labour dispute .....	1967	565	4	-	7	2	137	143	-	-	3	269
	1966	471	5	-	3	2	131	185	-	1	2	142
Refused offer of work and neglected opportunity to work .....	1967	168	2	1	16	6	28	91	1	5	2	16
	1966	400	5	1	31	14	115	171	5	16	20	22
Discharged for misconduct ....	1967	1,022	27	1	28	21	411	353	16	12	45	108
	1966	805	24	1	38	37	293	247	13	9	31	112
Voluntarily left employment without just cause .....	1967	6,212	204	17	246	221	1,786	1,935	170	118	356	1,159
	1966	5,835	189	24	278	216	1,504	1,879	159	106	345	1,135
Other reasons .....	1967	13,659	215	15	331	209	3,473	7,400	233	136	326	1,321
	1966	7,589	281	30	335	220	2,535	2,548	195	109	285	1,051
(1) Previously failed on initial claim but subsequently established on revised claim during October .....	1967	2,202	36	11	122	68	814	760	32	11	66	282

TABLE 6. Estimates of the Number of Beneficiaries, by Province

Province	Average per week	
	1967 - October - 1966	
	thousands	
CANADA .....	138.5	129.5
Newfoundland .....	3.6	4.4
Prince Edward Island .....	0.5	0.5
Nova Scotia .....	5.3	6.9
New Brunswick .....	4.9	6.4
Quebec .....	47.6	40.5
Ontario .....	51.1	43.2
Manitoba .....	3.5	3.2
Saskatchewan .....	2.3	2.1
Alberta .....	4.5	4.8
British Columbia .....	15.4	17.5

TABLE 7. Benefit Payments, by Province

Province	1967 - October - 1966			
	Weeks	Amount	Weeks	Amount
	number	dollars	number	dollars
CANADA .....	623,302	15,493,858	517,852	12,336,003
Newfoundland .....	16,083	390,873	17,655	438,988
Prince Edward Island .....	2,115	47,494	2,185	47,802
Nova Scotia .....	23,782	560,574	27,502	616,660
New Brunswick .....	21,854	509,933	25,590	593,766
Quebec .....	214,061	5,380,595	161,900	3,793,380
Ontario .....	229,978	5,752,600	172,701	4,176,729
Manitoba .....	15,694	365,369	12,802	284,118
Saskatchewan .....	10,157	234,124	8,315	180,865
Alberta .....	20,384	491,160	19,358	432,154
British Columbia .....	69,194	1,761,136	69,844	1,771,541



TABLE 8. Number of Weeks of Benefit, by Province

Province	Complete weeks	Partial weeks	
		Total	Due to excess earnings
	October 1967		
CANADA .....	575,330	47,972	34,582
Newfoundland .....	14,701	1,382	1,081
Prince Edward Island .....	1,978	137	109
Nova Scotia .....	21,027	2,755	2,288
New Brunswick .....	19,107	2,747	2,220
Quebec .....	198,943	15,118	10,631
Ontario .....	212,935	17,043	11,903
Manitoba .....	14,467	1,227	942
Saskatchewan .....	9,482	675	491
Alberta .....	19,053	1,331	902
British Columbia .....	63,637	5,557	4,015
	October 1966		
CANADA .....	478,919	38,933	28,823
Newfoundland .....	16,254	1,401	1,084
Prince Edward Island .....	1,966	219	178
Nova Scotia .....	24,239	3,263	2,751
New Brunswick .....	22,511	3,079	2,293
Quebec .....	150,475	11,425	8,211
Ontario .....	161,951	10,750	7,801
Manitoba .....	11,735	1,067	810
Saskatchewan .....	8,001	314	251
Alberta .....	18,031	1,327	974
British Columbia .....	63,756	6,088	4,470

## Glossary of Terms

**Insured population:** For purposes of this report, the insured population is defined as the number of persons estimated as currently in contact with the Unemployment Insurance Commission either as contributors or as claimants. The estimates are revised once a year when data from the book renewal are available.

**Employed population:** The number of persons estimated as currently contributing under the scheme. Estimates are based on a 10 per cent sample and hence are subject to sampling variability.

**Claimant population:** The count of persons currently reporting to the local offices as at the end of the month. An exception occurs in the month which serves as a benchmark, i.e., May or June, when the claimant count represents the number of persons reporting to local offices as claimants during the first two weeks of book renewal.

**Initial claim:** An application for benefit from a person for whom there is no benefit period in existence. This category includes both regular and seasonal claims, since it is impossible to determine, at the time of filing a claim, the type of benefit for which the claimant will subsequently qualify. On an initial claim the contribution history for the two years preceding the claim is examined. This is required in order to test attachment to insured employment and thus determine the type of benefit for which the claimant is eligible, if at all. In cases of eligibility, the record of the qualifying period is used to calculate the weekly rate of benefit and maximum entitlement for the benefit period. Only one initial claim is required for each benefit period.

**Benefit period:** A period commencing with the week in which the initial claim is made, provided the qualifying conditions are fulfilled. The maximum length of the benefit period is 52 weeks, in the case of claimants qualifying under the regular terms of the Act. Seasonal benefit periods may be established only from December 1 to mid-May, with a maximum length of 24 weeks. In either case, however, the benefit period terminates with exhaustion of benefit.

**Renewal claim:** An application for benefit from an insured person during the currency of a benefit period. As in the case of initial claims, this category includes renewal claims from all classes of claimants, i.e., regular, seasonal and fishing.

**Initial and renewal claims filed:** An approximation of the number of new cases of recorded unemployment among insured persons during a period. However, an initial claim representing a request for re-establishment of a benefit period with no actual interruption in the period on claim would not constitute a new case of unemployment. To the extent that such claims are filed in any month, the total overstates the number of new cases.

**Revised claims:** Those, other than initial or renewal, which must be considered by an insurance officer, e.g., involving dependency, extension of qualifying period, etc. A revised claim is thus an administrative device to initiate action for reconsideration of an existing initial or renewal claim.

**Claimants currently reporting to local offices:** All persons currently reporting to local offices to claim unemployment insurance benefit, either regular, seasonal or fishing. Under the Unemployment Insurance Act a person may claim benefit for any week during which he did not work a full working week.

**Number of weeks on claim:** The cumulative number of weeks during which a claimant has reported to prove unemployment during the current period on claim. The count commences with the week in which the initial (or renewal) claim is filed and continues unbroken so long as the claimant continues to report as directed. Cases occur in which a spell of unemployment extends beyond the termination of a benefit period and a new benefit period is immediately established with no actual interruption of the period on claim. In such cases the cumulative number of weeks is transferred from the previous claim document to that covering the subsequent benefit period and the count continued. This procedure applies also for contiguous periods on regular and seasonal benefit. Excluded from the count are any weeks for which a claimant reported "non-availability" during a complete week.

**Entitled to benefit:** For purposes of this report, this category comprises those adjudications arising from initial claims on which a benefit period (regular, seasonal or fishing) is shown as established **and no disqualification imposed** and adjudications indicating "approval" on renewal claims, either regular, seasonal or fishing.

**Not entitled to benefit:** Claimants disqualified on initial and renewal claims, and those for whom the adjudication on an initial claim was to the effect that the claimant was ineligible to establish either a regular, seasonal or fishing benefit period.

**Benefit period not established:** The minimum contribution requirements for any type of benefit have not been met. This figure thus represents the net total of persons with insufficient contributions to establish a benefit period under either the regular, seasonal or fishing benefit provisions, based on decisions arising from initial claims only. Subsequent decisions arising from a revised claim and constituting a reversal of the initial adjudication are not taken into account, but such decisions would reduce the number of benefit periods not established.

**Disqualification:** A disqualification is imposed because of circumstances surrounding the claim which render the claimant ineligible for the receipt of benefit either for a stated period or so long as the condition causing the disqualification continues.



1010723069

Where it is established that loss of employment was voluntary and without just cause on the part of the claimant, i.e., he left employment of his own volition or was dismissed because of misconduct, the maximum disqualification is six weeks; claimants participating in a labour dispute in which they are directly interested are disqualified for the duration of the work stoppage. In assessing the number of cases of disqualification, no distinction is made as to the type of claim, hence disqualifications arising from revised claims are included. The cases mentioned here serve as examples only and do not constitute a complete summary of conditions under which a disqualification may be imposed. Sections 59-66 of the Act contain a description of these conditions.

**Weeks compensated:** Calendar weeks in respect of which some benefit, either regular, seasonal or fishing, was paid. A compensated week is counted in the month in which the copy of the payment voucher is received in the District Treasury Office, which is not necessarily the month in which the week of unemployment occurred.

**Amount of benefit:** The sum of all benefit payments made during the month. This comprises regular, seasonal or fishing benefit.

**Complete week:** A week in respect of which a claimant received the full weekly rate of benefit authorized on that benefit period.

**Partial week:** A week for which a claimant received less than the full weekly rate authorized. A partial week may be due to excess earnings resulting in a reduced payment in direct proportion to the amount of such earnings. If a claimant was "not available for work" on any day or days during a week, a reduction will be made in the weekly rate proportionate to the number of days of "non-availability". A reduction will occur also if a portion of a week was designated as part of the prescribed waiting period.

**Excess earnings:** Earnings during a week in excess of the allowable earnings for a claimant's weekly benefit rate. As an example, a claimant whose weekly rate is \$30.00 may earn up to \$15.00 in a week without suffering a reduction in benefit; however, in a week where he earns \$17.00 his benefit will be reduced to \$28.00.

**Beneficiaries:** Persons who received one or more benefit payments. The estimate, based on the total number of payment documents for the month, represents the average weekly number of beneficiaries.

**Seasonal benefit:** Benefit payable during the period commencing with the Sunday prior to December 1 and ending with the Saturday after May 15, to

certain classes of claimants unable to fulfil the requirements under the regular benefit provisions of the Act. Claimants in Class A must prove 15 contributions since the Saturday preceding the 31st day of March immediately prior to the date of claim, while qualification under class B is contingent upon a regular benefit period having terminated since the Saturday following the 15th day of May immediately prior to the claim.

**Fishermen:** For purposes of regular benefit, a fisherman is a claimant showing five or more fishing contribution weeks during the last 52 weeks. For purposes of seasonal benefit, however, any claimant whose qualifying contributions include even one fishing contribution week is classed as a fishing claimant.

**Fishing contribution week:** Any week for which a fishing contribution is recorded, whether or not a contribution was also made in respect of other insured employment. Specially designed stamps are used to record insured employment in fishing and employers using the bulk pay method must report employee's fishing contributions separately from those relating to other insurable employment.

**Industrial Classification of persons filing new claims for Unemployment Insurance:** This information is based on a sample of documents in respect of initial claims filed in local offices during a month. To ensure that all such claims have an equal chance of being included in the study, the documents are accumulated until the end of the third week following the month in which the claim was filed.

The sampling ratio varies from one hundred per cent in the Atlantic provinces (during the period of low claim) to five per cent in Ontario. The sample embraces all new initial claims without regard to benefit status, i.e. failures as well as disqualifications are included. However, it excludes initial claims classed as transitional, i.e., those taken on behalf of persons terminating one benefit period and seeking re-establishment of credits, since such claims are not new cases of separation from employment.

At the present time only the new separations requiring an initial claim are included in this study, as these are the only documents forwarded to the Bureau for analysis. The ratio of initial to renewal claims fluctuates with the claim load, so that during the months of heavy claim, it is approximately 3:1.

**Geographical classification:** The provinces as defined in this bulletin are administrative entities. Hence, Ontario excludes Sioux Lookout for which data are included with Manitoba; British Columbia includes Whitehorse; Quebec excludes Magdalen Islands for which data are included in New Brunswick.