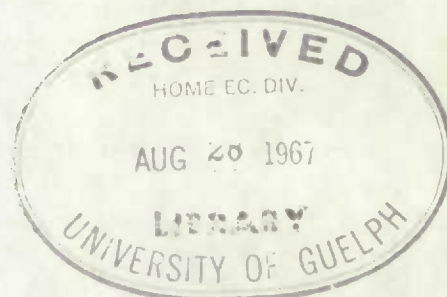


CATALOGUE No.

73-001

MONTHLY



STATISTICAL REPORT ON THE OPERATION OF THE UNEMPLOYMENT INSURANCE ACT MAY 1967

(Compiled from material supplied by the Unemployment Insurance Commission)

Published by Authority of
The Minister of Trade and Commerce

DOMINION BUREAU OF STATISTICS
Labour Division
Unemployment Insurance, Pensions and Manpower Section

August 1967
8006-509

Price: 20 cents
\$2.00 a year

Vol. 26—No. 5

The contents of this document may be used freely but DBS should be credited when republishing all or any part of it.

TABLE OF CONTENTS

	Page
Chart, Unemployment Insurance Activities	3
Commentary	4

List of Tables

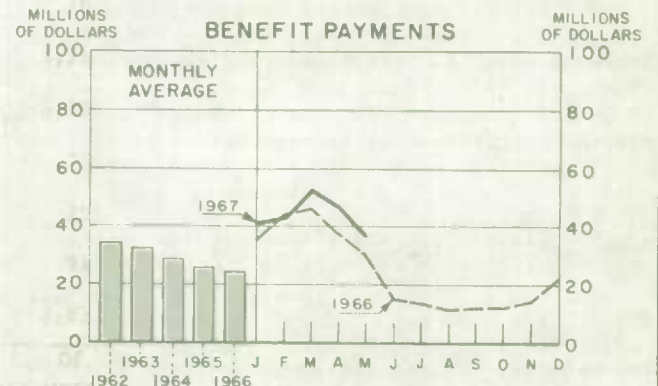
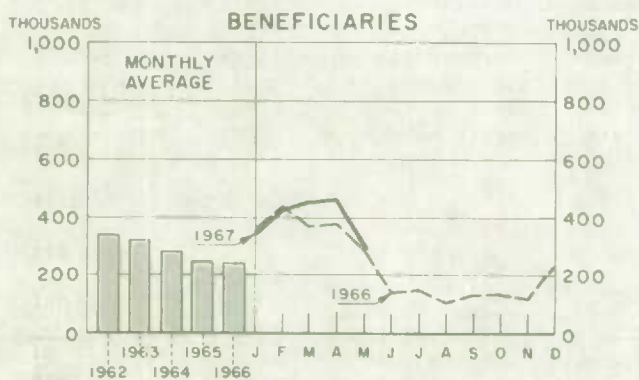
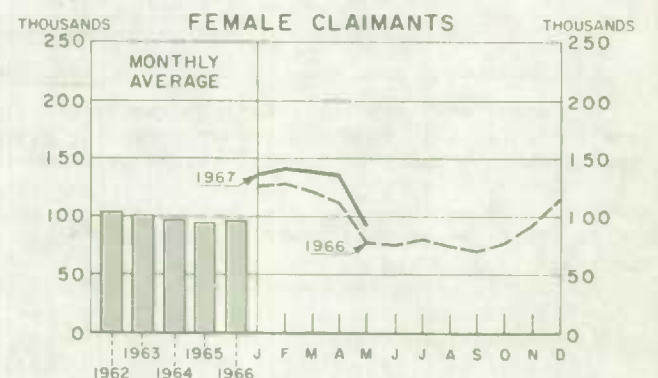
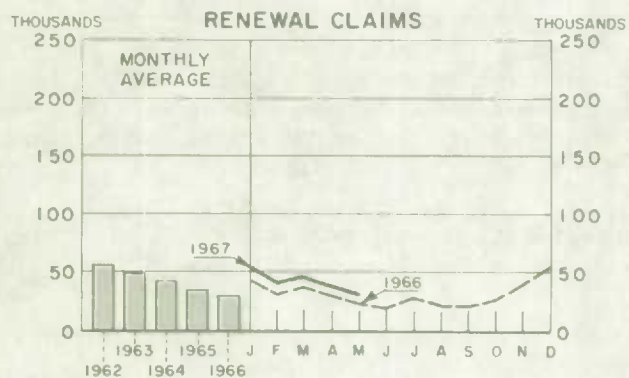
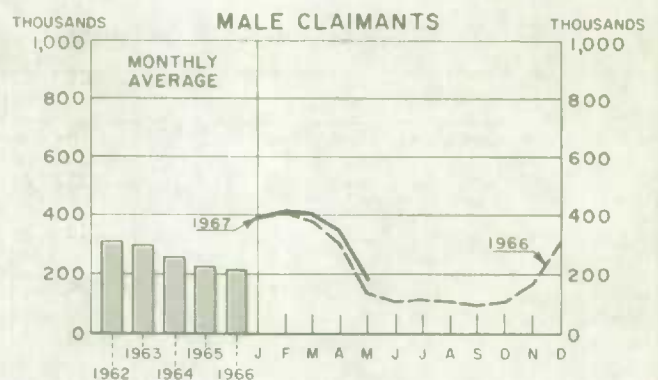
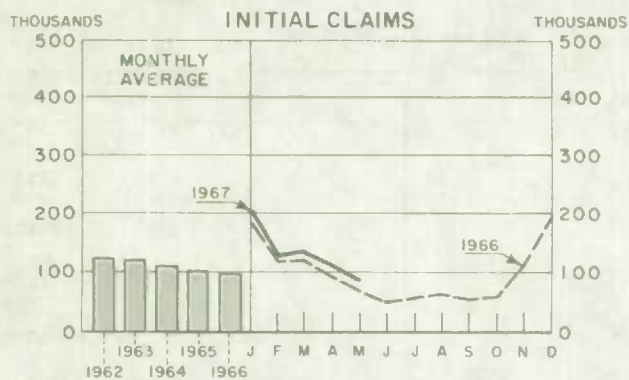
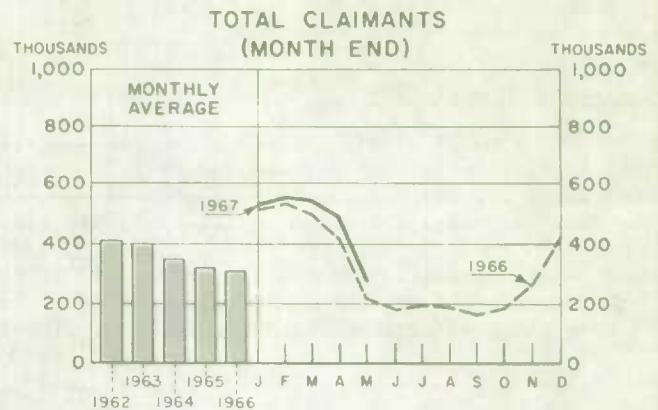
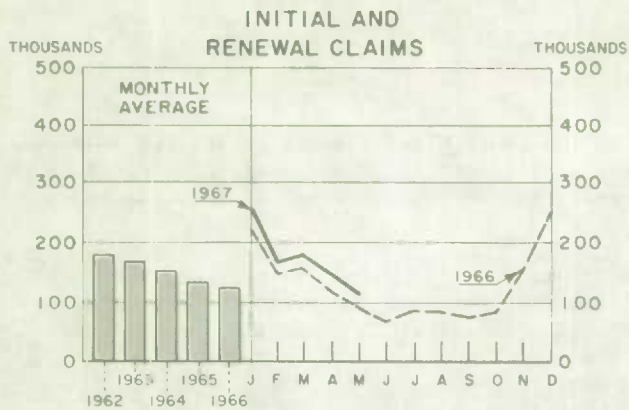
Consolidated Data on Claims for Regular, Seasonal and Fishing Benefit:

Summary Table	6
Table:	
1. Estimates of the Insured Population under the Unemployment Insurance Act	7
2. Number of Initial and Renewal Claims Filed in Local Offices in Each Province	7
3. Claimants Currently Reporting to Local Offices by Number of Weeks on Claim, Province and Sex	8
4. Disposition of Initial and Renewal Claims, and Claims Pending at the End of the Month, by Province	9
5. Number of Claimants Not Entitled to Benefit in Each Province, with Chief Reasons for Non-entitlement	10
6. Estimates of the Number of Beneficiaries, by Province	11
7. Benefit Payments, Showing Number of Weeks and Amount Paid, by Province	11
8. Number of Weeks Compensated, Classified as to Complete and Partial Weeks, and Showing Separately the Number of Partial Weeks Due to Excess Earnings, by Province	12
Seasonal Benefit, 1966-67 and 1965-66 periods	13
Glossary of Terms	20

Historical data since 1941 are contained in the July 1966 issue in this series, while annual data for the calendar years 1965 and 1966 are included in the January 1967 issue in this series.

For information regarding the personal characteristics, occupational and industrial status of both the insured population and persons establishing benefit periods, see the "Annual Report on Benefit Periods Established and Terminated under the Unemployment Insurance Act", DBS Catalogue No. 73-201.

UNEMPLOYMENT INSURANCE ACTIVITIES



CLAIMS AND BENEFIT PAYMENTS

MAY 1967

Claimants at month-end

The count of claimants for regular unemployment insurance benefit totalled 281,100 on May 31, 1967 as against 217,600 for the same date one year ago, an increase of 29 per cent. The April 28, 1967 count was 492,300, comprising 360,400 regular benefit and 131,900 seasonal benefit claimants. The seasonal benefit period terminated on May 20.

The percentage increase over May 31, 1966 was 32 per cent for males, 25 per cent for females. While May 31 data are not comparable with those for the months December to April, it is interesting to note the year-over-year changes for this period, in order to assess the impact of seasonal benefit.

Year-over-year percentage changes for month-end claimants

	Regular and seasonal benefit					Regular only
	Dec. 31, 1965 to Dec. 30, 1966 (1)	Jan. 31, 1966 to Jan. 31, 1967 (2)	Feb. 28, 1966 to Feb. 28, 1967 (3)	Mar. 31, 1966 to Mar. 31, 1967 (4)	Apr. 29, 1966 to Apr. 28, 1967 (5)	May 31, 1966 to May 31, 1967 (6)
TOTAL	+ 1	+ 4	+ 4	+ 9	+ 19	+ 29
Male	+ 1	+ 2	+ 2	+ 7	+ 18	+ 32
Female ...	+ 3	+ 10	+ 10	+ 16	+ 22	+ 25

A rather sharp reversal occurred in percentage increases, for the sexes, in column (6) and is partly tied in with the fact the data are for regular benefit only. During the entire 1966-67 seasonal benefit season, seasonal benefit totals were lower than for 1965-66.

It is worth noting also that while the May 31, 1967 total is almost a third above that for May 31, 1966, the May 31, 1966 figures were 5 per cent below the May 31, 1965. It is possible that the completion of the work on the Exposition may be a factor in the situation this year.

Initial and Renewal Claims

Initial and renewal claims filed during the month of May 1967 totalled 116,900 as compared with 91,000 during May 1966; for April the total was 148,200. The total for May 1967 represents an increase of 28 per cent over that for the comparable period one year ago and a 21 per cent decline from April 1967. The month-to-month decline, can, to a certain degree, be attributed to the cessation of seasonal benefit payments subsequent to May 20; this is indicated by the fact that while initial claims comprised about three-quarters of the total claim volume in both April and May, they accounted for four-fifths of the April to May decline.

Beneficiaries and Benefit Payments

The average weekly estimate of beneficiaries during May 1967 was 294,200 in comparison with 278,200 one year ago, and 460,500 for April 1967. Benefit payments totalled \$37.2 million in May 1967 versus \$47.2 million in April 1967 and \$30.0 million in May 1966. The average weekly payment was \$25.28 for May 1967, \$25.63 for April 1967 and \$23.93 for May 1966.

Provincial Data

Year-over-year comparisons indicated an increase in the total number of regular benefit claimants on May 31, 1967 over May 31, 1966 in all provinces except Manitoba, where a slight decline occurred. The regular benefit count in May 1966 compared with May 1965 figures, for example, showed a decline in all provinces except Ontario where there was a very slight increase.

Percentage Changes in Month-end Count of Regular Claimants

	May 31, 1966 to May 31, 1967			May 31, 1965 to May 31, 1966		
	Total	Male	Female	Total	Male	Female
CANADA	+ 29	+ 32	+ 25	- 5	- 7	- 2
Newfoundland	+ 57	+ 60	+ 36	- 14	- 17	+ 2
Prince Edward Island	+ 81	+ 118	+ 24	- 28	- 38	- 1
Nova Scotia	+ 17	+ 20	+ 10	- 5	- 8	+ 4
New Brunswick	+ 28	+ 33	+ 15	- 10	- 11	- 7
Quebec	+ 31	+ 35	+ 22	- 3	- 6	+ 3
Ontario	+ 32	+ 33	+ 31	+ 1	+ 2	-
Manitoba	- 3	- 16	+ 17	- 15	- 14	- 15
Saskatchewan	+ 9	+ 20	- 3	- 15	- 26	+ 2
Alberta	+ 17	+ 24	+ 6	- 25	- 29	- 18
British Columbia	+ 31	+ 29	+ 34	- 2	+ 2	- 7

The year-over-year comparison of total initial and renewal claims indicated an increase in all provinces except for a slight (2 per cent) decline in Manitoba. Initial claims were higher in all provinces. However, in the case of renewal claims, the provinces of Manitoba and Nova Scotia showed declines of 15 and 3 per cent, respectively.

Percentage Changes in Claims Filed, by Province

	April to May 1967			May 1966 to May 1967			April to May 1966		
	Total	Initial	Renewal	Total	Initial	Renewal	Total	Initial	Renewal
CANADA	- 21	- 22	- 19	+ 28	+ 28	+ 30	- 24	- 25	- 20
Newfoundland	- 28	- 25	- 44	+ 40	+ 41	+ 34	- 38	- 35	- 49
Prince Edward Island ..	- 32	- 25	- 51	+ 99	+ 103	+ 84	- 57	- 60	- 37
Nova Scotia	- 35	- 36	- 33	+ 15	+ 21	- 3	- 37	- 37	- 36
New Brunswick	- 32	- 29	- 41	+ 34	+ 38	+ 15	- 42	- 40	- 47
Quebec	- 13	- 18	+ 2	+ 27	+ 26	+ 29	- 20	- 24	- 9
Ontario	- 24	- 22	- 28	+ 38	+ 33	+ 56	- 21	- 21	- 20
Manitoba	- 27	- 27	- 28	- 2	+ 1	- 15	- 28	- 26	- 36
Saskatchewan	- 43	- 42	- 49	+ 9	+ 9	+ 7	- 43	- 42	- 46
Alberta	- 32	- 30	- 40	+ 26	+ 29	+ 14	- 41	- 40	- 44
British Columbia	- 14	- 14	- 12	+ 20	+ 24	+ 10	- 10	- 10	- 10

Summary Table

Activity	May 1967	April 1967	May 1966	% change from		Cumulative data			
				April 1967	May 1966	January to May		12 months ending May	
						1967	1966	1967	1966
	thousands					thousands			
Insured population as at month-end	4,694	4,404	4,471*	..	4,379*
Initial and renewal claims filed:									
Total	117	148	91	- 21	+ 28	871	745	1,674	1,556
Initial	86	111	68	- 22	+ 28	661	579	1,252	1,169
Renewal	31	37	23	- 19	+ 30	211	166	422	387
Claimants currently reporting to local offices	281**	492	218	- 43**	+ 29	480*	434*	334*	308*
Regular	281	360	218	- 22	+ 29				
S.B.	-	132	-						
S.B. Fishing	-	15	-						
Beneficiaries (weekly average)	294	461	278	- 36	+ 6	397*	366*	248*	233*
Weeks compensated	1,471	1,842	1,252	- 20	+ 18	8,648	7,820	12,869	11,851
Benefit paid \$	37,192	47,212	29,959	- 21	+ 24	222,484	193,792	323,994	290,164

Average weekly
benefit \$ 25.28 25.63 23.93 - 1 + 6 25.73 24.78 25.18 24.48

* Monthly average.

** Seasonal benefit is not payable in respect of unemployment occurring after May 20, hence in total,
April and May are not comparable.

TABLE 1. Estimates of the Insured Population under the Unemployment Insurance Act

End of	Total(1)	Employed	Claimants
1967 - April	4,694,000	4,201,700	492,300
March	4,750,000	4,206,200	543,800
February	4,681,000	4,129,200	551,800
January	4,684,000	4,152,100	531,900
1966 - December	4,633,000	4,209,600	423,400
November	4,591,000	4,324,700	266,300
October	4,521,000	4,336,700	184,300
September	4,528,000	4,363,100	164,900
August	4,577,000	4,389,800	187,200
July	4,512,000	4,316,000	196,000
June	4,500,000	4,318,700	181,300
May	4,404,000	4,186,400	217,600
April	4,465,000	4,051,100	413,900

(1) Commencing March 31, 1967, agricultural workers are included, as coverage was extended to certain workers in this industry April 1, 1967.

TABLE 2. Number of Initial and Renewal Claims Filed in Local Offices in Each Province(1)

Province	1967 - May - 1966					
	Total	Initial	Renewal	Total	Initial	Renewal
CANADA	116,869	86,346	30,523	91,021	67,541	23,480
Newfoundland	4,124	3,593	531	2,948	2,551	397
Prince Edward Island	750	597	153	377	294	83
Nova Scotia	4,353	3,481	872	3,778	2,881	897
New Brunswick	5,395	4,478	917	4,040	3,243	797
Quebec	42,456	30,061	12,395	33,447	23,854	9,593
Ontario	36,136	26,151	9,985	26,125	19,704	6,421
Manitoba	3,136	2,542	594	3,208	2,510	698
Saskatchewan	1,817	1,537	280	1,673	1,412	261
Alberta	4,742	3,837	905	3,764	2,970	794
British Columbia	13,960	10,069	3,891	11,661	8,122	3,539

(1) In addition, revised claims received numbered 31,394.

TABLE 3. Claimants Currently Reporting to Local Offices by Number of Weeks on Claim, Province and Sex
(Counted on last working day of the month)

Province and sex	Total claimants	Number of weeks on claim (based on 20 per cent sample)				Total claimants
		1-4	5-13	14-26	27 or more(1)	
		May 31, 1967				May 31, 1966
CANADA	281,075	94,321	83,698	76,014	27,042	217,610
Male	185,534	64,601	58,305	48,812	13,816	140,888
Female	95,541	29,720	25,393	27,202	13,226	76,722
Newfoundland	12,276	3,228	4,010	3,912	1,126	7,843
Male	10,623	2,837	3,654	3,291	841	6,632
Female	1,653	391	356	621	285	1,211
Prince Edward Island	1,581	444	367	660	110	872
Male	1,159	302	291	489	77	532
Female	422	142	76	171	33	340
Nova Scotia	12,925	3,051	3,835	4,379	1,660	11,032
Male	9,657	2,279	3,083	3,270	1,025	8,070
Female	3,268	772	752	1,109	635	2,962
New Brunswick	13,272	2,990	4,107	4,639	1,536	10,342
Male	10,245	2,365	3,462	3,570	848	7,716
Female	3,027	625	645	1,069	688	2,626
Quebec	100,607	36,684	31,550	24,824	7,549	76,628
Male	73,854	27,454	24,402	18,097	3,901	54,660
Female	26,753	9,230	7,148	6,727	3,648	21,968
Ontario	82,890	28,164	23,961	21,830	8,935	62,871
Male	44,581	16,220	13,034	11,167	4,160	33,545
Female	38,309	11,944	10,927	10,663	4,775	29,326
Manitoba	8,337	2,764	2,214	2,443	916	8,594
Male	4,434	1,435	1,233	1,278	488	5,261
Female	3,903	1,329	981	1,165	428	3,333
Saskatchewan	5,218	1,347	1,360	1,894	617	4,780
Male	3,024	732	806	1,125	361	2,512
Female	2,194	615	554	769	256	2,268
Alberta	11,690	3,987	3,489	3,105	1,109	9,983
Male	7,778	2,806	2,486	1,999	487	6,294
Female	3,912	1,181	1,003	1,106	622	3,689
British Columbia	32,279	11,662	8,805	8,328	3,484	24,665
Male	20,179	8,171	5,854	4,526	1,628	15,666
Female	12,100	3,491	2,951	3,802	1,856	8,999

(1) The bulk of the cases in this group were on claim from 27-39 weeks.

Note: Values less than 50 subject to relatively large sampling variability.

TABLE 4. Disposition of Initial and Renewal Claims and Claims Pending
at the End of the Month, by Province(1)

Province	Adjudicated					Pending	
	Total	Entitled to benefit		Not entitled to benefit		Initial	Renewal
		Initial	Renewal	Initial	Renewal		
	May 1967						
CANADA	125,195	68,202	26,772	25,055	5,166	25,224	7,234
Newfoundland	4,754	3,296	580	762	116	980	136
Prince Edward Island	947	609	208	95	35	92	23
Nova Scotia	4,622	2,840	749	872	161	827	199
New Brunswick	6,070	4,031	854	1,059	126	905	238
Quebec	43,741	22,767	10,866	8,365	1,743	9,919	2,855
Ontario	37,927	20,019	8,208	7,851	1,849	8,017	2,548
Manitoba	3,452	2,044	611	715	82	521	98
Saskatchewan	2,337	1,419	308	539	71	284	57
Alberta	6,024	3,478	935	1,426	185	680	163
British Columbia	15,321	7,699	3,453	3,371	798	2,999	917
	May 1966						
CANADA	98,694	52,575	20,748	21,105	4,266	22,491	6,740
Newfoundland	3,472	2,291	394	698	89	758	109
Prince Edward Island	530	338	83	78	31	67	11
Nova Scotia	3,957	2,295	752	749	161	743	257
New Brunswick	4,596	2,920	763	792	121	752	180
Quebec	36,018	19,047	8,719	6,880	1,372	8,772	2,686
Ontario	27,066	13,847	5,259	6,626	1,334	6,982	2,048
Manitoba	3,652	2,074	738	710	130	651	162
Saskatchewan	2,161	1,294	295	504	68	321	51
Alberta	5,253	2,885	912	1,297	159	675	227
British Columbia	11,989	5,584	2,833	2,771	801	2,770	1,009

(1) In addition 31,657 revised claims were disposed of. Of these, 3,187 were special requests not granted and 1,404 were appeals by claimants. There were 6,876 revised claims pending at the end of the month.

TABLE 5. Number of Claimants Not Entitled to Benefit in Each Province during May 1967 and 1966
with Chief Reasons for Non-entitlement

Chief reasons for non-entitlement		Canada	Nfld.	P.E.I.	N.S.	N.B.	Que.	Ont.	Man.	Sask.	Alta.	B.C.
Benefit period not established	1967 ⁽¹⁾	11,071	415	41	377	633	3,762	3,273	278	193	564	1,535
	1966	8,652	314	31	296	390	3,035	2,445	279	190	545	1,127
Claimants disqualified	1967	29,915	779	154	1,165	975	10,142	9,689	779	743	1,609	3,880
	1966	30,273	796	179	1,089	1,051	10,177	9,739	1,071	850	1,642	3,679
Not unemployed	1967	775	61	7	21	38	233	162	42	55	89	67
	1966	667	23	5	30	38	248	126	42	49	67	39
Not capable of and not available for work	1967	7,970	162	24	251	222	2,279	3,031	271	332	564	834
	1966	8,260	162	32	265	207	2,502	3,021	405	280	528	858
Loss of work due to a labour dispute	1967	1,221	-	-	121	11	698	165	4	-	-	222
	1966	547	3	9	-	8	218	201	-	3	-	105
Refused offer of work and neglected opportunity to work	1967	390	-	1	20	15	104	180	10	12	11	37
	1966	1,763	17	44	83	111	516	550	58	118	95	171
Discharged for misconduct	1967	1,274	32	6	43	25	425	467	35	25	64	152
	1966	1,294	36	3	42	58	474	434	27	11	48	161
Voluntarily left employment without just cause	1967	6,976	224	33	252	242	2,036	2,255	200	154	477	1,103
	1966	7,291	198	42	280	292	2,063	2,357	230	170	468	1,191
Other reasons	1967	11,309	300	83	457	422	4,367	3,429	217	165	404	1,465
	1966	10,451	357	44	389	337	4,156	3,050	309	219	436	1,154
(1) Previously failed on initial claim but subsequently established on revised claim during May	1967	2,252	102	11	76	124	843	619	38	32	111	296

TABLE 6. Estimates of the Number of Beneficiaries, by Province

Province	Average per week	
	1967 - May - 1966	
	thousands	
CANADA	294.2	278.2
Newfoundland	18.9	16.7
Prince Edward Island	3.5	2.2
Nova Scotia	17.9	15.7
New Brunswick	17.8	16.2
Quebec	93.3	95.5
Ontario	81.0	73.8
Manitoba	10.7	12.2
Saskatchewan	7.4	7.4
Alberta	11.4	11.9
British Columbia	32.3	26.7

TABLE 7. Benefit Payments, by Province

Province	1967 - May - 1966			
	Weeks	Amount	Weeks	Amount
	number	dollars	number	dollars
CANADA	1,471,201	37,191,524	1,252,011	29,958,606
Newfoundland	94,513	2,543,776	75,001	1,815,189
Prince Edward Island	17,712	426,204	10,003	224,781
Nova Scotia	89,505	2,117,254	70,780	1,608,373
New Brunswick	88,904	2,243,391	72,837	1,736,305
Quebec	466,271	12,035,001	429,561	10,561,610
Ontario	405,223	9,994,427	331,888	7,904,969
Manitoba	53,632	1,321,902	55,118	1,233,039
Saskatchewan	37,068	923,339	33,204	743,439
Alberta	57,099	1,467,072	53,363	1,240,005
British Columbia	161,274	4,119,158	120,256	2,890,896

TABLE 8. Number of Weeks of Benefit, by Province

Province	Complete weeks	Partial weeks	
		Total	Due to excess earnings
	May 1967		
CANADA	1,374,247	96,954	75,169
Newfoundland	89,201	5,312	4,036
Prince Edward Island	16,400	1,312	907
Nova Scotia	80,587	8,918	7,442
New Brunswick	82,306	6,598	5,161
Quebec	438,542	27,729	21,229
Ontario	380,436	24,787	19,053
Manitoba	49,682	3,950	3,316
Saskatchewan	34,604	2,464	1,950
Alberta	53,204	3,895	2,976
British Columbia	149,285	11,989	9,099
	May 1966		
CANADA	1,172,119	79,892	62,444
Newfoundland	70,834	4,167	3,292
Prince Edward Island	9,071	932	734
Nova Scotia	62,587	8,193	6,912
New Brunswick	65,563	7,274	5,943
Quebec	402,741	26,820	20,726
Ontario	312,471	19,417	14,629
Manitoba	52,881	2,237	1,773
Saskatchewan	31,918	1,286	1,056
Alberta	51,391	1,972	1,531
British Columbia	112,662	7,594	5,848

Seasonal Benefit

Claims considered under the seasonal benefit provisions accounted for more than 35 per cent of initial claims processed during the 1966-67 period as against 40 per cent one year ago. The heaviest volume of claims considered under these provisions occurs in December. This is associated with two factors in particular, one being the slow-down in employment due to climatic conditions and the other being the opening of the seasonal benefit period, commencing November 27.

Initial claims established under the seasonal benefit provisions numbered 242,400* compared with 250,000* during the 1965-66 period, a decline of 7,600 or 3 per cent. In about 10 per cent of the cases, eligibility was achieved by virtue of contributions in fishing, and for this group the number was only slightly lower than one year ago, with the decline from last year occurring mainly among persons eligible for non-fishing seasonal benefit.

As indicated in Table II, out of the total of 242,400 benefit claims, 60,800 or one-quarter were established in December. The January total established was somewhat less, about 50,000 but some of these would have been filed in December. The sharp dip in the May total is mainly due to the termination of the seasonal benefit period on May 20.

Claimants reporting to the local offices on the last working day of the month (Table III) reached the peak on March 31, 1967 with a total of 136,500. While the end of the April claimant total is some 5,000 less than March, this was true only for fishermen, non-fishing seasonal benefit claimants having increased. Exhaustion of benefit as well as resumption of fishing accounts for this decline.

For the fishing sector, the months of December and January were the peak periods with 90 per cent of the claims recorded during those two months (Table II) as against 45 per cent recorded in the non-fishing sector. Of the 25,000 fishermen establishing benefit, approximately 20,000 or 80 per cent were in the Atlantic provinces. Newfoundland accounted for almost 10,000, Nova Scotia being next with more than 5,000. British Columbia recorded 4,000.

During the 1966-67 period almost \$70 million was paid under these provisions; this compares with \$61 million for the same period last year.

* See footnotes to Table II.

TABLE I - (S.B.) Initial Claims Considered under the Seasonal Benefit Provisions as a Percentage of Initial Claims Processed, 1966-67 and 1965-66 Periods

Seasonal benefit period and month	Canada	Nfld.	P.E.I.	N.S.	N.B.	Que.	Ont.	Man.	Sask.	Alta.	B.C.
	per cent										
<u>1966- 67 period</u>	36.5	56.8	59.4	46.3	51.3	34.1	31.2	36.3	36.7	31.7	36.4
December	45.1	70.3	67.2	54.3	58.9	39.4	41.3	38.8	39.0	33.5	42.7
January	32.6	48.1	50.6	49.0	50.7	30.1	25.9	29.7	30.0	28.9	32.2
February	32.2	44.1	49.5	38.7	43.0	32.3	29.0	27.9	30.8	28.9	33.9
March	34.4	46.7	54.6	41.4	47.7	32.9	28.7	41.7	40.9	35.0	36.8
April	38.4	56.8	66.1	41.9	52.6	36.1	33.6	47.4	46.0	36.0	36.7
May	35.7	54.1	68.3	44.7	49.7	34.7	31.0	38.1	42.8	28.1	33.8
 <u>1965-66 period</u>	 40.7	 63.4	 64.6	 48.8	 53.3	 39.1	 35.2	 38.7	 40.1	 34.8	 37.9
December	49.5	73.7	71.6	58.2	61.0	44.0	43.5	39.6	41.3	39.1	51.4
January	36.1	55.3	57.6	52.0	51.1	33.2	32.0	30.8	32.3	28.9	30.1
February	36.1	52.1	52.1	40.7	46.2	39.0	29.8	32.9	35.3	32.4	36.5
March	40.7	60.5	64.3	42.2	52.6	39.8	34.9	48.6	48.3	39.0	39.5
April	43.0	62.6	73.3	43.5	54.1	41.5	39.7	48.9	51.2	39.7	36.3
May	37.0	61.6	64.2	38.7	45.0	38.5	31.2	38.2	44.8	32.4	32.2

TABLE II - (S.B.) Number of Claims Established(1) under the Seasonal Benefit Provisions, by Month and by Province, 1966-67 and 1965-66 Periods.

Seasonal benefit period and type of benefit	Total for the period	Month											
		December (3)		January		February		March		April		May (3)	
in thousands													
1966-67 period(2)													
Total	242.4	60.8		49.0		32.6		37.6		37.8		24.5	
Non-fishing ...	217.4	46.8		40.9		31.0		36.7		37.5		24.5	
Fishing(4)	25.0	14.0		8.2		1.6		0.9		0.3		-	
1965-66 period													
Total	250.0	68.4		51.3		34.5		41.9		33.7		20.1	
Non-fishing ...	222.8	51.8		43.3		33.0		41.1		33.5		20.1	
Fishing	27.2	16.6		8.0		1.4		0.8		0.2		-	
Province													
		Nfld.	P.E.I.	N.S.	N.B.	Que.	Ont.	Man.	Sask.	Alta.	B.C.		
1966-67 period(2)													
Total	242.4	22.4	4.8	18.5	20.6	66.9	58.3	8.3	7.0	8.4	27.1		
Non-fishing ...	217.4	13.5	3.1	13.1	17.4	66.2	57.8	7.8	7.0	8.4	23.1		
Fishing(4)	25.0	8.9	1.7	5.4	3.2	0.7	0.5	0.5	-	-	4.0		
1965-66 period													
Total	250.0	24.3	4.9	18.5	21.3	73.0	56.4	9.5	7.8	9.4	24.9		
Non-fishing ...	222.8	14.4	3.1	12.5	17.9	72.2	55.8	9.0	7.8	9.3	20.9		
Fishing	27.2	9.9	1.8	6.0	3.4	0.8	0.6	0.6	-	0.1	4.0		

- (1) The contribution requirement of 15 weeks since the preceding March 31 was proven or a regular benefit period had terminated since the Saturday following the week in which May 15, 1966 occurred.
- (2) In each of those intervals, approximately 8,000 additional seasonal benefit periods were established on a re-computation. However, in an undetermined number of cases, re-computation would result in conversion of seasonal benefit to regular. Thus net additions to seasonal benefit would be somewhat under 8,000.
- (3) Includes cases processed during November but excludes residual cases processed after May 31.
- (4) Commencing January 1967 the fishing seasonal benefit claimants include all claimants who established eligibility by virtue of fishing contributions. The latter group is, however, insignificant.

TABLE III - (S.B.) Seasonal Benefit Claimants Reporting to Local Offices on the Last Working Day of the Month, 1966-67 and 1965-66 Periods.

Type of benefit and sex	Average for the period	December	January	February	March	April
in thousands						
<u>1966-67 period</u>						
Total claimants	110.6	59.6	102.5	122.4	136.5	131.9
Male	82.3	44.2	77.3	91.1	101.4	97.4
Female	28.3	15.4	25.2	31.2	35.1	34.5
Non-fishing	91.4	45.7	79.9	98.7	115.6	117.0
Male	63.4	30.6	54.8	67.9	81.0	82.6
Female	28.0	15.2	25.0	30.8	34.7	34.4
Fishing(1)	19.2	13.9	22.6	23.7	20.9	14.8
Male	18.9	13.6	22.4	23.3	20.5	14.7
Female	0.3	0.2	0.2	0.4	0.4	0.1
<u>1965-66 period</u>						
Total claimants	115.9	66.8	109.9	134.6	142.6	125.7
Male	88.8	51.2	85.8	102.5	109.3	95.3
Female	27.1	15.6	24.2	32.1	33.4	30.4
Non-fishing	96.2	51.9	85.3	109.0	121.1	113.7
Male	69.2	36.3	61.3	77.1	87.8	83.3
Female	27.0	15.5	24.0	31.9	33.3	30.4
Fishing	19.7	14.9	24.7	25.6	21.6	12.0
Male	19.6	14.8	24.5	25.4	21.5	12.0
Female	0.1	0.1	0.1	0.2	0.1	-

(1) Commencing January 1967 the fishing seasonal benefit claimants include all claimants who established eligibility by virtue of fishing contributions. The latter group is, however, insignificant.

TABLE IV - (S.B.) Seasonal Benefit Claimants Reporting to Local Offices on the Last Working Day of the Month,
by Province, 1966-67 and 1965-66 Periods

Seasonal benefit period	Canada	Nfld.	P.E.I.	N.S.	N.B.	Que.	Ont.	Man.	Sask.	Alta.	B.C.
	in thousands										
<u>1966-67 period(1)</u>											
Average for the period ...	110.6	13.3	2.8	10.3	10.5	27.1	24.4	3.6	3.0	3.1	12.6
December 30, 1966	59.6	9.7	1.9	4.1	5.4	13.2	12.8	1.7	1.5	1.5	7.8
January 31, 1967	102.5	14.1	2.9	10.7	10.1	22.4	21.1	3.1	2.6	2.6	12.9
February 28, 1967	122.4	15.4	3.2	12.0	11.7	28.8	26.9	3.6	3.3	3.2	14.3
March 31, 1967	136.5	14.6	3.1	12.8	12.9	34.9	30.8	4.8	3.8	4.0	14.7
April 28, 1967	131.9	12.5	2.7	11.6	12.4	36.4	30.4	4.8	3.8	4.2	13.2
<u>1965-66 period</u>											
Average for the period ...	115.9	14.4	3.0	10.3	11.3	30.4	23.9	4.3	3.4	4.0	11.1
December 31, 1965	66.8	10.2	2.1	5.5	6.6	14.4	14.6	2.2	1.7	1.9	7.6
January 31, 1966	109.9	15.7	3.2	11.1	11.5	25.3	21.1	4.3	3.0	3.0	11.9
February 28, 1966	134.6	17.8	3.5	12.5	13.3	33.7	26.9	4.6	4.1	5.5	12.7
March 31, 1966	142.6	16.0	3.5	12.6	13.7	38.9	29.8	5.5	4.4	5.3	12.9
April 29, 1966	125.7	12.3	2.6	9.6	11.2	39.6	26.9	5.0	3.7	4.2	10.7

(1) Commencing January 1967 the fishing seasonal benefit claimants include all claimants who established eligibility by virtue of fishing contributions. The latter group is, however, insignificant.

TABLE V - (S.B.) Seasonal Benefit Claimants as a Percentage of Total Claimants, by Province, 1966-67
and 1965-66 Periods

Seasonal benefit period	Canada	Nfld.	P.E.I.	N.S.	N.B.	Que.	Ont.	Man.	Sask.	Alta.	B.C.
	per cent										
<u>1966-67 period</u>	21.7	42.5	46.4	32.3	33.8	17.4	17.0	21.0	20.4	15.4	21.9
December 30, 1966 ..	14.1	36.3	36.7	17.0	22.1	10.2	11.4	12.2	12.1	8.9	13.5
January 31, 1967 ...	19.3	42.0	45.1	31.1	32.4	14.5	13.7	17.0	16.3	12.3	20.6
February 28, 1967 ..	22.2	45.2	48.0	34.5	34.6	17.4	16.8	19.2	19.7	14.6	23.8
March 31, 1967	25.1	44.3	50.7	37.3	37.7	20.3	20.2	26.1	24.7	19.2	26.1
April 28, 1967	26.8	43.3	50.4	37.6	39.4	23.0	22.1	28.7	29.6	21.3	25.9
 <u>1965-66 period</u>	 24.4	 47.5	 51.3	 34.1	 36.9	 20.2	 19.2	 22.5	 22.5	 19.8	 22.9
December 31, 1965 ..	16.0	38.5	40.7	21.8	25.5	10.9	13.7	13.0	13.8	10.8	15.6
January 31, 1966 ...	21.5	45.5	47.8	33.8	35.6	16.7	15.6	20.6	17.2	13.0	20.6
February 28, 1966 ..	25.4	50.2	52.7	36.3	38.9	20.6	18.9	21.0	22.7	23.9	25.2
March 31, 1966	28.6	51.2	54.3	38.4	41.0	24.0	23.1	27.0	28.3	27.5	27.2
April 29, 1966	30.4	51.2	63.1	37.9	41.9	27.9	25.1	31.7	32.0	23.7	26.8

TABLE VI - (S.B.) Seasonal Benefit Claimants, Non-fishing and Fishing(1), Reporting to Local Offices on the Last Working Day of the Month, by Province, 1966-67 Period

Type of seasonal benefit claimant and month	Canada	Nfld.	P.E.I.	N.S.	N.B.	Que.	Ont.	Man.	Sask.	Alta.	B.C.
	in thousands										
<u>1966-67 period (average)</u>											
Non-fishing	91.4	6.1	1.4	6.2	8.0	26.6	24.0	3.4	3.0	3.1	9.6
Fishing	19.2	7.2	1.4	4.1	2.5	0.5	0.4	0.2	-	-	3.0
December:											
Non-fishing	45.7	3.3	0.8	2.7	3.9	12.7	12.6	1.6	1.5	1.5	5.1
Fishing	13.9	6.4	1.1	1.4	1.5	0.5	0.2	0.1	-	-	2.7
January:											
Non-fishing	79.9	5.5	1.4	5.7	7.2	21.7	20.6	2.9	2.6	2.6	9.6
Fishing	22.6	8.6	1.6	5.0	2.9	0.6	0.5	0.1	-	-	3.3
February:											
Non-fishing	98.7	6.3	1.6	6.7	8.5	28.3	26.5	3.4	3.3	3.2	10.9
Fishing	23.7	9.1	1.6	5.3	3.1	0.5	0.5	0.2	-	-	3.4
March:											
Non-fishing	115.6	7.3	1.7	7.7	10.0	34.4	30.3	4.5	3.8	4.0	11.8
Fishing	20.9	7.3	1.5	5.1	2.9	0.5	0.4	0.4	-	-	2.8
April:											
Non-fishing	117.0	7.9	1.6	8.0	10.4	36.0	30.2	4.4	3.8	4.1	10.6
Fishing	14.8	4.6	1.1	3.6	1.9	0.4	0.2	0.4	-	-	2.7

(1) Commencing January 1967 the fishing seasonal benefit claimants include all claimants who established eligibility by virtue of fishing contributions. The latter group is, however, insignificant.

Glossary of Terms

Insured population: For purposes of this report, the insured population is defined as the number of persons estimated as currently in contact with the Unemployment Insurance Commission either as contributors or as claimants. The estimates are revised once a year when data from the book renewal are available.

Employed population: The number of persons estimated as currently contributing under the scheme. Estimates are based on a 10 per cent sample and hence are subject to sampling variability.

Claimant population: The count of persons currently reporting to the local offices as at the end of the month. An exception occurs in the month which serves as a benchmark, i.e., May or June, when the claimant count represents the number of persons reporting to local offices as claimants during the first two weeks of book renewal.

Initial claim: An application for benefit from a person for whom there is no benefit period in existence. This category includes both regular and seasonal claims, since it is impossible to determine, at the time of filing a claim, the type of benefit for which the claimant will subsequently qualify. On an initial claim the contribution history for the two years preceding the claim is examined. This is required in order to test attachment to insured employment and thus determine the type of benefit for which the claimant is eligible, if at all. In cases of eligibility, the record of the qualifying period is used to calculate the weekly rate of benefit and maximum entitlement for the benefit period. Only one initial claim is required for each benefit period.

Benefit period: A period commencing with the week in which the initial claim is made, provided the qualifying conditions are fulfilled. The maximum length of the benefit period is 52 weeks, in the case of claimants qualifying under the regular terms of the Act. Seasonal benefit periods may be established only from December 1 to mid-May, with a maximum length of 24 weeks. In either case, however, the benefit period terminates with exhaustion of benefit.

Renewal claim: An application for benefit from an insured person during the currency of a benefit period. As in the case of initial claims, this category includes renewal claims from all classes of claimants, i.e., regular, seasonal and fishing.

Initial and renewal claims filed: An approximation of the number of new cases of recorded unemployment among insured persons during a period. However, an initial claim representing a request for re-establishment of a benefit period with no actual interruption in the period on claim would not constitute a new case of unemployment. To the extent that such claims are filed in any month, the total overstates the number of new cases.

Revised claims: Those, other than initial or renewal, which must be considered by an insurance officer, e.g., involving dependency, extension of qualifying period, etc. A revised claim is thus an administrative device to initiate action for reconsideration of an existing initial or renewal claim.

Claimants currently reporting to local offices: All persons currently reporting to local offices to claim unemployment insurance benefit, either regular, seasonal or fishing. Under the Unemployment Insurance Act a person may claim benefit for any week during which he did not work a full working week.

Number of weeks on claim: The cumulative number of weeks during which a claimant has reported to prove unemployment during the current period on claim. The count commences with the week in which the initial (or renewal) claim is filed and continues unbroken so long as the claimant continues to report as directed. Cases occur in which a spell of unemployment extends beyond the termination of a benefit period and a new benefit period is immediately established with no actual interruption of the period on claim. In such cases the cumulative number of weeks is transferred from the previous claim document to that covering the subsequent benefit period and the count continued. This procedure applies also for contiguous periods on regular and seasonal benefit. Excluded from the count are any weeks for which a claimant reported "non-availability" during a complete week.

Entitled to benefit: For purposes of this report, this category comprises those adjudications arising from initial claims on which a benefit period (regular, seasonal or fishing) is shown as established and no disqualification imposed and adjudications indicating "approval" on renewal claims, either regular, seasonal or fishing.

Not entitled to benefit: Claimants disqualified on initial and renewal claims, and those for whom the adjudication on an initial claim was to the effect that the claimant was ineligible to establish either a regular, seasonal or fishing benefit period.

Benefit period not established: The minimum contribution requirements for any type of benefit have not been met. This figure thus represents the net total of persons with insufficient contributions to establish a benefit period under either the regular, seasonal or fishing benefit provisions, based on decisions arising from initial claims only. Subsequent decisions arising from a revised claim and constituting a reversal of the initial adjudication are not taken into account, but such decisions would reduce the number of benefit periods not established.

Disqualification: A disqualification is imposed because of circumstances surrounding the claim which render the claimant ineligible for the receipt of benefit either for a stated period or so long as the condition causing the disqualification continues.

Where it is established that loss of employment was voluntary and without just cause on the part of the claimant, i.e., he left employment of his own volition or was dismissed because of misconduct, the maximum disqualification is six weeks; claimants participating in a labour dispute in which they are directly interested are disqualified for the duration of the work stoppage. In assessing the number of cases of disqualification, no distinction is made as to the type of claim, hence disqualifications arising from revised claims are included. The cases mentioned here serve as examples only and do not constitute a complete summary of conditions under which a disqualification may be imposed. Sections 59-66 of the Act contain a description of these conditions.

Weeks compensated: Calendar weeks in respect of which some benefit, either regular, seasonal or fishing, was paid. A compensated week is counted in the month in which the copy of the payment voucher is received in the District Treasury Office, which is not necessarily the month in which the week of unemployment occurred.

Amount of benefit: The sum of all benefit payments made during the month. This comprises regular, seasonal or fishing benefit.

Complete week: A week in respect of which a claimant received the full weekly rate of benefit authorized on that benefit period.

Partial week: A week for which a claimant received less than the full weekly rate authorized. A partial week may be due to excess earnings resulting in a reduced payment in direct proportion to the amount of such earnings. If a claimant was "not available for work" on any day or days during a week, a reduction will be made in the weekly rate proportionate to the number of days of "non-availability". A reduction will occur also if a portion of a week was designated as part of the prescribed waiting period.

Excess earnings: Earnings during a week in excess of the allowable earnings for a claimant's weekly benefit rate. As an example, a claimant whose weekly rate is \$30.00 may earn up to \$15.00 in a week without suffering a reduction in benefit; however, in a week where he earns \$17.00 his benefit will be reduced to \$28.00.

Beneficiaries: Persons who received one or more benefit payments. The estimate, based on the total number of payment documents for the month, represents the average weekly number of beneficiaries.

Seasonal benefit: Benefit payable during the period commencing with the Sunday prior to December 1 and ending with the Saturday after May 15, to

certain classes of claimants unable to fulfil the requirements under the regular benefit provisions of the Act. Claimants in Class A must prove 15 contributions since the Saturday preceding the 31st day of March immediately prior to the date of claim, while qualification under class B is contingent upon a regular benefit period having terminated since the Saturday following the 15th day of May immediately prior to the claim.

Fishermen: For purposes of regular benefit, a fisherman is a claimant showing five or more fishing contribution weeks during the last 52 weeks. For purposes of seasonal benefit, however, any claimant whose qualifying contributions include even one fishing contribution week is classed as a fishing claimant.

Fishing contribution week: Any week for which a fishing contribution is recorded, whether or not a contribution was also made in respect of other insured employment. Specially designed stamps are used to record insured employment in fishing and employers using the bulk pay method must report employee's fishing contributions separately from those relating to other insurable employment.

Industrial Classification of persons filing new claims for Unemployment Insurance: This information is based on a sample of documents in respect of initial claims filed in local offices during a month. To ensure that all such claims have an equal chance of being included in the study, the documents are accumulated until the end of the third week following the month in which the claim was filed.

The sampling ratio varies from one hundred per cent in the Atlantic provinces (during the period of low claim) to five per cent in Ontario. The sample embraces all new initial claims without regard to benefit status, i.e. failures as well as disqualifications are included. However, it excludes initial claims classed as transitional, i.e., those taken on behalf of persons terminating one benefit period and seeking re-establishment of credits, since such claims are not new cases of separation from employment.

At the present time only the new separations requiring an **initial** claim are included in this study, as these are the only documents forwarded to the Bureau for analysis. The ratio of initial to renewal claims fluctuates with the claim load, so that during the months of heavy claim, it is approximately 3:1.

Geographical classification: The provinces as defined in this bulletin are administrative entities. Hence, Ontario excludes Sioux Lookout for which data are included with Manitoba; British Columbia includes Whitehorse; Quebec excludes Magdalen Islands for which data are included in New Brunswick.



STATISTICS CANADA LIBRARY
BIBLIOTHEQUE STATISTIQUE CANADA



1010723064