

CATALOGUE No.

73-001

MONTHLY



STATISTICAL REPORT ON THE OPERATION OF THE UNEMPLOYMENT INSURANCE ACT

JULY 1967

(Compiled from material supplied by the Unemployment Insurance Commission)

Published by Authority of
The Minister of Trade and Commerce

DOMINION BUREAU OF STATISTICS
Labour Division
Unemployment Insurance, Pensions and Manpower Section

October 1967
8006-509

Price: 20 cents
\$2.00 a year

The contents of this document may be used freely but DBS should be credited when republishing all or any part of it.

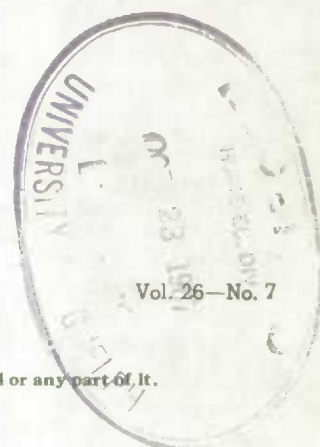


TABLE OF CONTENTS

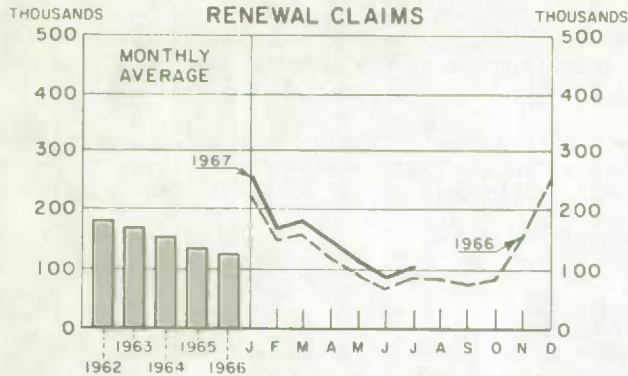
	Page
Chart, Unemployment Insurance Activities	3
Commentary:	
Claims and Benefit Payments During July	4
Industrial classification of Persons Filing New Claims During June	5
<u>List of Tables</u>	
Consolidated Data on Claims for Regular and Seasonal Benefit:	
Summary Table	8
Table:	
1. Estimates of the Insured Population under the Unemployment Insurance Act	9
2. Number of Initial and Renewal Claims Filed in Local Offices in Each Province	9
3. Claimants Currently Reporting to Local Offices by Number of Weeks on Claim, Province and Sex	10
4. Disposition of Initial and Renewal Claims, and Claims Pending at the End of the Month, by Province	11
5. Number of Claimants Not Entitled to Benefit in Each Province, with Chief Reasons for Non-entitlement	12
6. Estimates of the Number of Beneficiaries, by Province	13
7. Benefit Payments, Showing Number of Weeks and Amount Paid, by Province	13
8. Number of Weeks Compensated, Classified as to Complete and Partial Weeks, and Showing Separately the Number of Partial Weeks Due to Excess Earnings, by Province	14
Glossary of Terms	15

Historical data since 1941 are contained in the July 1966 issue in this series, while annual data for the calendar years 1966 and 1965 are included in the January 1967 issue in this series.

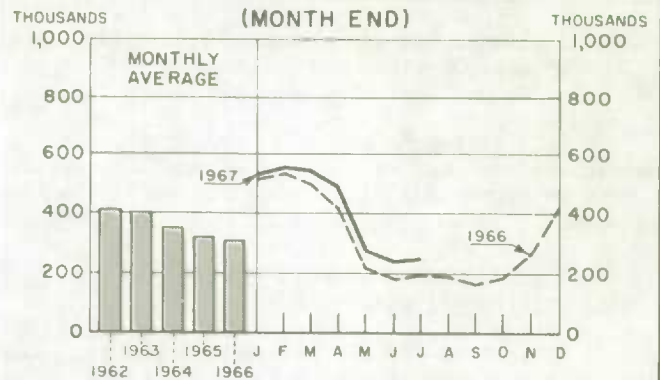
For information regarding the personal characteristics, occupational and industrial status of both the insured population and persons establishing benefit periods, see the "Annual Report on Benefit Periods Established and Terminated under the Unemployment Insurance Act", DBS Catalogue No. 73-201.

UNEMPLOYMENT INSURANCE ACTIVITIES

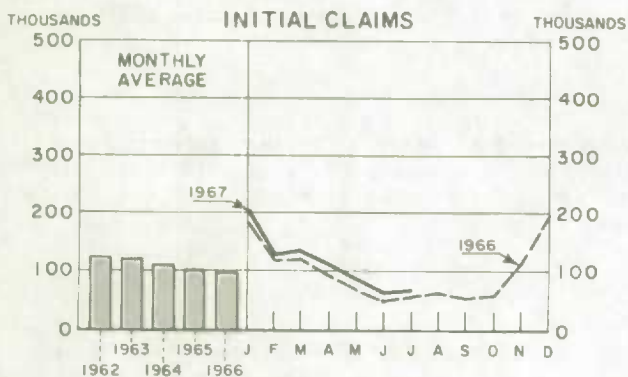
INITIAL AND RENEWAL CLAIMS



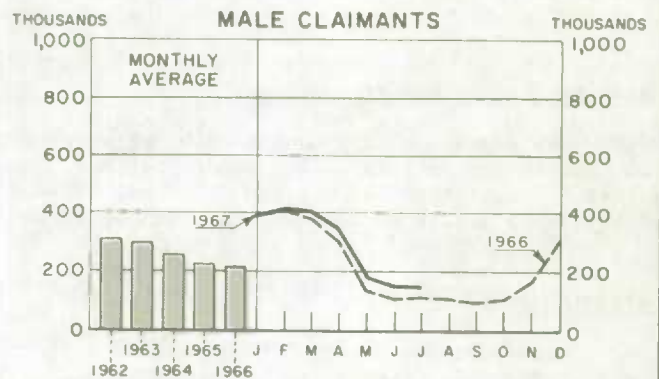
TOTAL CLAIMANTS (MONTH END)



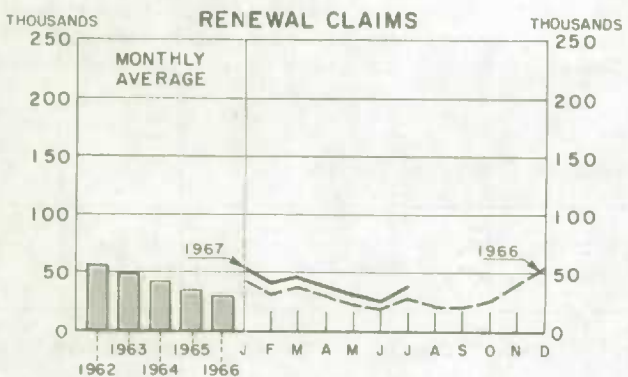
INITIAL CLAIMS



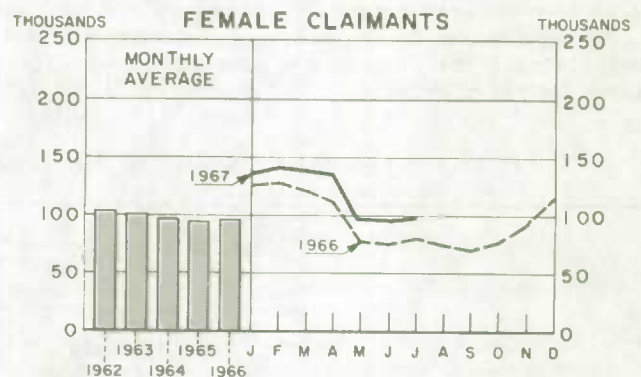
MALE CLAIMANTS



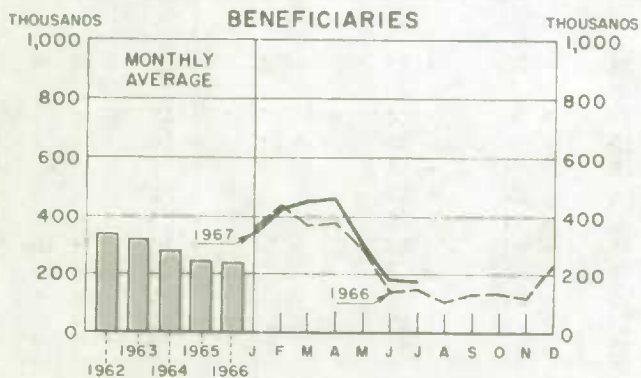
RENEWAL CLAIMS



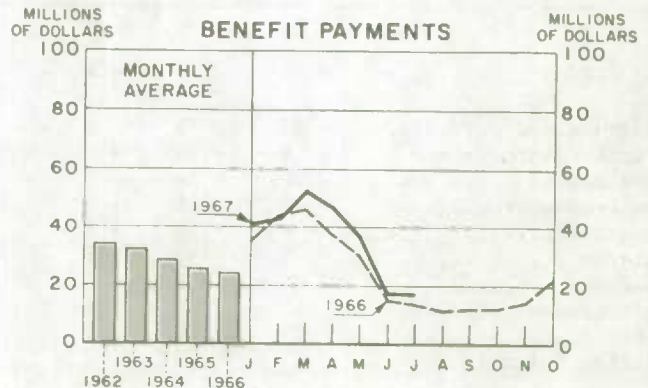
FEMALE CLAIMANTS



BENEFICIARIES



BENEFIT PAYMENTS



CLAIMS AND BENEFIT PAYMENTS

JULY 1967

Claimants at month-end

Claimants for unemployment insurance benefit numbered 246,000 on July 31, 1967 as against 243,000 on June 30, 1967 and 196,000 one year ago. This represented virtually no change from June 30, 1967 but a 26 per cent rise over last year (28 per cent for males and 23 per cent for females).

Male claimants accounted for 60 per cent of the total on each of the above mentioned dates. However, 66 per cent of those on claim 1-4 weeks as at July 31, 1967 were men, while the group 5 weeks or more on continuous claim comprised only 55 per cent men. This pattern is typical at this season of the year.

Initial and renewal claims

A total of 102,000 initial and renewal claims were filed in local offices across Canada during July, in comparison with 89,000 in June and 87,000 one year ago. More than 90 per cent of the claims filed during the three months under review represented separations from employment during the month.

Beneficiaries and benefit payments

The average weekly number of beneficiaries was estimated at 180,000 for July in comparison with 181,600 for June and 144,200 one year ago. Benefit payments amounted to \$17.7 million in July as against \$17.8 million in June and \$13.7 million one year ago. The average weekly payment was \$24.64 in July 1967, \$24.56 in June 1967 and \$23.68 in July 1966.

Provincial data

All provinces except Ontario showed a decline in the claimant count, as between June 30 and July 31, 1967. In Ontario, the count increased by 21 per cent, 32 per cent for men and 8 per cent for women. The Ontario increment is not unusual at this time, and reflects temporary lay-offs and annual holiday shut-downs in the automotive industry. New Brunswick was the only province which recorded lower claimant totals than one year ago; however, the decline occurred among the males, the number of females having increased.

Percentage Changes in Month-end Claimant Count, by Province

	June 30 to July 31, 1967			July 29, 1966 to July 31, 1967			June 30 to July 29, 1966		
	Total	Male	Female	Total	Male	Female	Total	Male	Female
CANADA	+ 1	-	+ 4	+ 26	+ 28	+ 23	+ 8	+ 8	+ 8
Newfoundland	- 31	- 36	- 9	+ 27	+ 34	+ 8	- 9	- 15	+ 11
Prince Edward Island ..	- 8	- 14	+ 2	+ 13	+ 2	+ 35	+ 9	+ 18	- 4
Nova Scotia	- 12	- 14	- 5	+ 8	+ 9	+ 6	- 3	- 5	-
New Brunswick	- 19	- 26	- 3	- 4	- 11	+ 12	- 1	- 1	- 1
Quebec	- 4	- 10	+ 8	+ 32	+ 39	+ 22	-	- 5	+ 9
Ontario	+ 21	+ 32	+ 8	+ 28	+ 29	+ 26	+ 32	+ 50	+ 14
Manitoba	- 3	- 2	- 3	+ 5	+ 1	+ 8	- 7	- 13	- 1
Saskatchewan	- 10	- 18	- 4	+ 9	+ 11	+ 7	- 10	- 14	- 6
Alberta	- 13	- 24	+ 1	+ 13	+ 7	+ 19	- 11	- 14	- 7
British Columbia	- 13	- 17	- 7	+ 30	+ 29	+ 31	- 12	- 20	+ 2

An increased volume of 13,000 claims was filed in July over June. All provinces except Newfoundland, Nova Scotia, New Brunswick and British Columbia shared in this increase. However, it is worth while pointing out that the increase in Ontario exceeded the total increase. The changes in the other provinces were small. Generally higher claims over one year ago were recorded except for the Atlantic region.

Percentage Changes in Claims Filed, by Province

	June to July 1967			July 1966 to July 1967			June to July 1966		
	Total	Initial	Renewal	Total	Initial	Renewal	Total	Initial	Renewal
CANADA	+ 15	+ 5	+ 38	+ 17	+ 12	+ 28	+ 27	+ 19	+ 48
Newfoundland	- 12	- 17	+ 7	- 13	- 23	+ 39	+ 11	+ 8	+ 29
Prince Edward Island ..	+ 12	+ 4	+ 39	- 2	- 10	+ 25	- 4	+ 8	- 30
Nova Scotia	- 8	- 5	- 14	+ 1	+ 3	- 3	- 18	- 2	- 40
New Brunswick	- 8	- 16	+ 24	- 17	- 14	- 27	- 1	- 9	+ 27
Quebec	+ 5	- 1	+ 20	+ 21	+ 20	+ 22	+ 24	+ 15	+ 51
Ontario	+ 36	+ 20	+ 69	+ 21	+ 11	+ 38	+ 62	+ 48	+ 96
Manitoba	+ 7	+ 8	+ 3	+ 10	+ 11	+ 4	+ 4	+ 6	- 5
Saskatchewan	+ 14	+ 8	+ 42	+ 23	+ 21	+ 31	- 10	- 11	- 5
Alberta	+ 4	+ 4	+ 8	+ 10	+ 15	- 3	- 5	- 7	- 1
British Columbia	- 15	- 20	- 3	+ 18	+ 14	+ 27	- 20	- 22	- 16

Industrial Classification of Persons Separated from Employment and Filing Initial(1)
Claims for Unemployment Insurance Benefit During June 1967

During June there were 38,700 new cases of recorded unemployment, as indicated by initial claims, an increase of 26 per cent from a year ago. Quebec and Ontario accounted for more than 75 per cent of the cases, and virtually all of the 8,000 increase over last year. Almost 90 per cent of the increase occurred in the manufacturing and construction industries.

The heavy concentration of cases in the Public Administration and Defence Industry in Newfoundland last year was due in large measure to the closing of a military base in that province.

(1) Initial claims taken on behalf of persons exhausting benefit and seeking re-establishment of credits are excluded. Excluded also are persons who separated from employment and filed renewal claims.

TABLE 1. Percentage Distribution of Claims(1) by Industry and Province
June 1967 and 1966

Industry group	Canada	Nfld.	P.E.I.	N.S.	N.B.	Que.	Ont.	Man.	Sask.	Alta.	B.C.
Total new cases (000's) 1967	38.7	0.5	(2)	1.2	0.9	12.9	17.0	0.7	(2)	1.0	3.9
1966	30.7	0.8	(2)	1.1	1.3	9.2	12.7	0.7	(2)	1.0	3.6
Per cent distribution											
Forestry (mainly logging) 1967	1	5		(3)	2	1	1	1		1	4
1966	1	2		1	1	(3)	(3)	(3)		1	4
Fishing(4) and trapping 1967	(3)	3		3	(3)	(3)	-	-		-	1
1966	(3)	2		3	1	-	-	-		-	(3)
Mining 1967	2	4		4	2	1	2	1		6	1
1966	1	3		2	2	1	1	2		8	2
Manufacturing 1967	42	19		37	35	42	49	37		21	31
1966	38	10		22	40	36	49	25		15	24
Construction 1967	16	25		8	20	17	16	7		15	19
1966	12	9		14	18	18	8	7		10	16
Transportation, communication and other utilities 1967	5	7		7	7	6	2	3		7	7
1966	6	9		8	8	6	4	6		6	9
Trade 1967	14	13		16	18	14	13	27		21	14
1966	17	13		21	12	17	14	31		26	16
Service 1967	13	16		17	11	13	11	15		22	17
1966	17	11		19	11	14	17	17		23	21
Public administration and defence 1967	3	7		5	4	4	3	5		3	3
1966	4	39		7	4	2	3	6		3	4
Other 1967	3	2		3	3	3	3	4		6	3
1966	5	3		3	4	7	4	5		8	5
All cases 1967	100	100		100	100	100	100	100		100	100
1966	100	100		100	100	100	100	100		100	100

(1) See footnote (1) page 5

(2) Less than 500.

(3) Less than 1/2 of 1 per cent.

(4) Persons whose reported occupation under covered employment was "fisherman" were coded to the fishing industry even though the nature of business of the most recent employer was other than fishing. This differs from the general coding practice of assigning a single code on the basis of the principal activity of the employer. However, fishermen report themselves usually as self-employed.

TABLE II. Percentage Distribution of Claims, by Industry, Quarterly Intervals

	1967		1966		
	June	March	December	September	June
Total new cases (000's)	38.7	73.1	132.6	47.5	30.7
	Per cent distribution				
Forestry (mainly logging)	1	15	6	2	1
Fishing and trapping	(1)	1	5	1	(1)
Mining	2	2	2	1	1
Manufacturing	42	31	35	36	38
Construction	16	18	25	13	12
Transportation, communication and other utilities	5	6	9	9	6
Trade	14	11	8	14	17
Service	13	8	6	14	17
Public administration and defence	3	6	3	5	4
Other	3	2	2	5	3
All cases	100	100	100	100	100

(1) Less than 1/2 of 1 per cent.

.. Figures not available.

- Nil.

Summary Table

Activity	July 1967	June 1967	July 1966	% change from		Cumulative data			
				June 1967	July 1966	January to July		12 months ending July	
						1967	1966	1967	1966
	thousands					thousands			
Insured population as at month-end	4,712	4,512	4,481*	..	4,422*
Initial and renewal claims filed:									
Total	102	89	87	+ 15	+ 17	1,063	901	1,710	1,553
Initial	66	63	59	+ 5	+ 12	790	687	1,273	1,166
Renewal	36	26	28	+ 38	+ 28	273	214	437	387
Claimants currently reporting to local offices	246	243	196	+ 1	+ 26	413*	364*	343*	309*
Beneficiaries (weekly average)	180	182	144	- 1	+ 25	336*	301*	254*	234*
Weeks compensated	720	726	577	- 1	+ 25	10,094	9,015	13,120	11,878
Benefit paid \$	17,743	17,837	13,661	- 1	+ 30	258,064	222,165	331,200	290,479
Average weekly benefit \$	24.64	24.56	23.68	-	+ 4	25.57	24.64	25.24	24.45

* Monthly average.

TABLE 1. Estimates of the Insured Population under the Unemployment Insurance Act

End of	Total(1)	Employed	Claimants
1967 - June	4,712,000	4,469,200	242,800
May	4,655,000	4,373,900	281,100
April	4,746,000	4,253,700	492,300
March	4,750,000	4,206,200	543,800
February	4,681,000	4,129,200	551,800
January	4,684,000	4,152,100	531,900
1966 - December	4,633,000	4,209,600	423,400
November	4,591,000	4,324,700	266,300
October	4,521,000	4,336,700	184,300
September	4,528,000	4,363,100	164,900
August	4,577,000	4,389,800	187,200
July	4,512,000	4,316,000	196,000
June	4,500,000	4,318,700	181,300

(1) Commencing March 31, 1967 agricultural workers are included as coverage was extended to certain workers in this industry April 1, 1967.

TABLE 2. Number of Initial and Renewal Claims Filed in Local Offices in Each Province

Province	1967 - July - 1966					
	Total(1)	Initial	Renewal	Total	Initial	Renewal
CANADA	102,099	66,049	36,050	87,068	58,856	28,212
Newfoundland	1,526	1,136	390	1,753	1,472	281
Prince Edward Island	286	200	86	291	222	69
Nova Scotia	2,773	1,958	815	2,744	1,907	837
New Brunswick	2,400	1,773	627	2,907	2,052	855
Quebec	30,159	20,343	9,816	25,017	16,962	8,055
Ontario	50,934	30,630	20,304	42,261	27,501	14,760
Manitoba	1,867	1,501	366	1,700	1,348	352
Saskatchewan	1,075	846	229	873	698	175
Alberta	2,429	1,902	527	2,207	1,661	546
British Columbia	8,650	5,760	2,890	7,315	5,033	2,282

(1) In addition, revised claims received numbered 29,266.

TABLE 3. Claimants Currently Reporting to Local Offices by Number of Weeks on Claim, Province and Sex
(Counted on last working day of the month)

Province and sex	Total claimants	Number of weeks on claim (based on 20 per cent sample)				Total claimants
		1-4	5-13	14-26	27 or more(1)	
		July 31, 1967				July 29, 1966
CANADA	246,262	112,081	59,267	46,752	28,162	195,996
Male	147,484	74,236	33,753	24,937	14,558	115,472
Female	98,778	37,845	25,514	21,815	13,604	80,524
Newfoundland	6,031	2,051	1,700	1,440	840	4,749
Male	4,629	1,645	1,318	1,087	579	3,449
Female	1,402	406	382	353	261	1,300
Prince Edward Island	856	398	245	121	92	755
Male	494	264	96	72	62	486
Female	362	134	149	49	30	269
Nova Scotia	9,497	3,340	2,375	2,086	1,696	8,806
Male	6,490	2,466	1,667	1,277	1,080	5,971
Female	3,007	874	708	809	616	2,835
New Brunswick	7,742	2,566	2,005	1,977	1,194	8,072
Male	4,977	1,740	1,276	1,307	654	5,610
Female	2,765	826	729	670	540	2,462
Quebec	77,611	32,972	21,089	15,318	8,232	58,684
Male	49,321	22,011	13,447	9,542	4,321	35,493
Female	28,290	10,961	7,642	5,776	3,911	23,191
Ontario	103,097	55,441	21,263	16,474	9,919	80,634
Male	59,886	37,248	10,491	7,325	4,822	46,354
Female	43,211	18,193	10,772	9,149	5,097	34,280
Manitoba	5,934	2,154	1,360	1,494	926	5,651
Male	2,750	1,173	581	581	415	2,716
Female	3,184	981	779	913	511	2,935
Saskatchewan	3,388	1,095	818	796	679	3,119
Male	1,389	499	257	279	354	1,257
Female	1,999	596	561	517	325	1,862
Alberta	7,150	2,480	1,968	1,733	969	6,321
Male	3,473	1,194	942	864	473	3,231
Female	3,677	1,286	1,026	869	496	3,090
British Columbia	24,956	9,584	6,444	5,313	3,615	19,205
Male	14,075	5,996	3,678	2,603	1,798	10,905
Female	10,881	3,588	2,766	2,710	1,817	8,300

(1) The bulk of the cases in this group were on claim from 27-39 weeks.

Note: Values less than 50 subject to relatively large sampling variability.

TABLE 4. Disposition of Initial and Renewal Claims and Claims Pending at the End of the Month, by Province

Province	Adjudicated					Pending	
	Total	Entitled to benefit		Not entitled to benefit		Initial	Renewal
		Initial	Renewal	Initial	Renewal		
	July 1967						
CANADA	96,465(1)	30,471	25,747	31,799	8,448	27,616	9,464
Newfoundland	1,601	614	324	585	78	461	119
Prince Edward Island	323	164	82	65	12	67	22
Nova Scotia	2,682	1,127	607	822	126	701	281
New Brunswick	2,127	931	467	640	89	760	248
Quebec	27,739	9,009	5,805	10,217	2,708	9,271	3,626
Ontario	48,174	13,424	15,371	14,802	4,577	12,978	4,027
Manitoba	1,633	676	241	623	93	598	152
Saskatchewan	1,021	447	168	375	31	275	66
Alberta	2,372	989	434	850	99	621	142
British Columbia	8,793	3,090	2,248	2,820	635	1,884	781
	July 1966						
CANADA	80,855	26,118	16,429	27,352	10,956	25,488	7,497
Newfoundland	1,849	1,113	184	493	59	443	125
Prince Edward Island	317	128	78	95	16	68	17
Nova Scotia	2,741	1,111	640	806	184	652	257
New Brunswick	2,861	1,176	674	880	131	658	254
Quebec	22,450	8,071	4,805	7,410	2,164	7,870	2,924
Ontario	37,795	9,457	7,198	13,592	7,548	12,626	2,890
Manitoba	1,561	678	266	540	77	449	112
Saskatchewan	864	403	142	289	30	234	56
Alberta	2,142	863	440	730	109	617	170
British Columbia	8,275	3,118	2,002	2,517	638	1,871	692

(1) In addition 28,093 revised claims were disposed of. Of these, 2,586 were special requests not granted and 1,057 were appeals by claimants. There were 7,006 revised claims pending at the end of the month.

TABLE 5. Number of Claimants Not Entitled to Benefit in Each Province during July 1967 and 1966
with Chief Reasons for Non-entitlement

Chief reasons for non-entitlement	Canada	Nfld.	P.E.I.	N.S.	N.B.	Que.	Ont.	Man.	Sask.	Alta.	B.C.
Benefit period not established 1967 (1)	11,681	297	33	350	339	4,102	4,697	227	138	295	1,203
..... 1966	9,789	238	33	352	409	3,406	3,590	210	126	300	1,125
Claimants disqualified 1967	42,050	607	65	910	674	11,272	22,953	744	525	1,035	3,265
..... 1966	41,777	523	113	1,000	921	9,356	24,252	743	461	1,068	3,340
Not unemployed 1967	660	73	4	86	40	186	145	24	18	29	55
..... 1966	1,021	58	9	70	29	131	630	37	15	9	33
Not capable of and not available for work 1967	7,080	123	14	257	194	1,873	2,885	300	279	392	763
..... 1966	6,300	116	26	238	171	1,979	2,295	290	192	352	641
Loss of work due to a labour dispute 1967	3,030	8	-	8	19	1,842	995	6	1	1	150
..... 1966	375	4	-	17	-	152	85	-	1	-	116
Refused offer of work and neglected opportunity to work 1967	212	-	1	29	9	46	99	6	5	4	13
..... 1966	726	15	14	47	20	221	244	33	22	34	76
Discharged for misconduct 1967	993	22	1	32	25	361	394	10	4	40	104
..... 1966	940	12	1	25	41	317	374	23	21	26	100
Voluntarily left employment without just cause 1967	5,311	185	27	218	166	1,577	1,875	128	88	248	799
..... 1966	5,463	150	32	261	239	1,436	2,008	128	67	300	842
Other reasons 1967	24,764	196	18	280	221	5,387	16,560	270	130	321	1,381
..... 1966	26,952	168	31	342	421	5,120	18,616	232	143	347	1,532
(1) Previously failed on initial claim but subsequently established on revised claim during July 1967	1,877	34	8	46	30	805	696	30	6	30	192

TABLE 6. Estimates of the Number of Beneficiaries, by Province

Province	Average per week	
	1967 - July - 1966	
	thousands	
CANADA	180.0	144.2
Newfoundland	4.8	3.4
Prince Edward Island	0.6	0.6
Nova Scotia	7.5	7.0
New Brunswick	6.3	6.0
Quebec	61.8	45.4
Ontario	66.7	53.7
Manitoba	4.4	4.4
Saskatchewan	2.6	2.7
Alberta	5.8	5.6
British Columbia	19.5	15.4

TABLE 7. Benefit Payments, by Province

Province	1967 - July - 1966			
	Weeks	Amount	Weeks	Amount
	number	dollars	number	dollars
CANADA	719,947	17,743,009	576,902	13,661,091
Newfoundland	19,209	477,324	13,807	307,229
Prince Edward Island	2,576	55,000	2,456	53,883
Nova Scotia	30,153	706,507	27,871	626,522
New Brunswick	25,061	592,729	23,859	554,223
Quebec	247,079	6,157,222	181,792	4,291,133
Ontario	266,846	6,646,043	214,847	5,257,169
Manitoba	17,713	400,032	17,609	372,625
Saskatchewan	10,231	232,072	10,729	229,110
Alberta	23,256	558,451	22,267	501,488
British Columbia	77,823	1,917,629	61,665	1,467,709

TABLE 8. Number of Weeks of Benefit, by Province

Province	Complete weeks	Partial weeks	
		Total	Due to excess earnings
	July 1967		
CANADA	669,339	50,608	36,496
Newfoundland	17,775	1,434	1,089
Prince Edward Island	2,389	187	138
Nova Scotia	27,091	3,062	2,517
New Brunswick	22,539	2,522	1,964
Quebec	233,233	13,846	9,364
Ontario	248,170	18,676	13,610
Manitoba	16,225	1,488	1,074
Saskatchewan	9,505	726	503
Alberta	21,547	1,709	1,173
British Columbia	70,865	6,958	5,064
	July 1966		
CANADA	538,474	38,428	27,265
Newfoundland	12,932	875	599
Prince Edward Island	2,243	213	153
Nova Scotia	24,628	3,243	2,598
New Brunswick	21,237	2,622	2,023
Quebec	170,796	10,996	7,888
Ontario	201,368	13,479	8,877
Manitoba	16,583	1,026	706
Saskatchewan	10,176	553	415
Alberta	21,210	1,057	745
British Columbia	57,301	4,364	3,261

Glossary of Terms

Insured population: For purposes of this report, the insured population is defined as the number of persons estimated as currently in contact with the Unemployment Insurance Commission either as contributors or as claimants. The estimates are revised once a year when data from the book renewal are available.

Employed population: The number of persons estimated as currently contributing under the scheme. Estimates are based on a 10 per cent sample and hence are subject to sampling variability.

Claimant population: The count of persons currently reporting to the local offices as at the end of the month. An exception occurs in the month which serves as a benchmark, i.e., May or June, when the claimant count represents the number of persons reporting to local offices as claimants during the first two weeks of book renewal.

Initial claim: An application for benefit from a person for whom there is no benefit period in existence. This category includes both regular and seasonal claims, since it is impossible to determine, at the time of filing a claim, the type of benefit for which the claimant will subsequently qualify. On an initial claim the contribution history for the two years preceding the claim is examined. This is required in order to test attachment to insured employment and thus determine the type of benefit for which the claimant is eligible, if at all. In cases of eligibility, the record of the qualifying period is used to calculate the weekly rate of benefit and maximum entitlement for the benefit period. Only one initial claim is required for each benefit period.

Benefit period: A period commencing with the week in which the initial claim is made, provided the qualifying conditions are fulfilled. The maximum length of the benefit period is 52 weeks, in the case of claimants qualifying under the regular terms of the Act. Seasonal benefit periods may be established only from December 1 to mid-May, with a maximum length of 24 weeks. In either case, however, the benefit period terminates with exhaustion of benefit.

Renewal claim: An application for benefit from an insured person during the currency of a benefit period. As in the case of initial claims, this category includes renewal claims from all classes of claimants, i.e., regular, seasonal and fishing.

Initial and renewal claims filed: An approximation of the number of new cases of recorded unemployment among insured persons during a period. However, an initial claim representing a request for re-establishment of a benefit period with no actual interruption in the period on claim would not constitute a new case of unemployment. To the extent that such claims are filed in any month, the total overstates the number of new cases.

Revised claims: Those, other than initial or renewal, which must be considered by an insurance officer, e.g., involving dependency, extension of qualifying period, etc. A revised claim is thus an administrative device to initiate action for reconsideration of an existing initial or renewal claim.

Claimants currently reporting to local offices: All persons currently reporting to local offices to claim unemployment insurance benefit, either regular, seasonal or fishing. Under the Unemployment Insurance Act a person may claim benefit for any week during which he did not work a full working week.

Number of weeks on claim: The cumulative number of weeks during which a claimant has reported to prove unemployment during the current period on claim. The count commences with the week in which the initial (or renewal) claim is filed and continues unbroken so long as the claimant continues to report as directed. Cases occur in which a spell of unemployment extends beyond the termination of a benefit period and a new benefit period is immediately established with no actual interruption of the period on claim. In such cases the cumulative number of weeks is transferred from the previous claim document to that covering the subsequent benefit period and the count continued. This procedure applies also for contiguous periods on regular and seasonal benefit. Excluded from the count are any weeks for which a claimant reported "non-availability" during a complete week.

Entitled to benefit: For purposes of this report, this category comprises those adjudications arising from initial claims on which a benefit period (regular, seasonal or fishing) is shown as established **and no disqualification imposed** and adjudications indicating "approval" on renewal claims, either regular, seasonal or fishing.

Not entitled to benefit: Claimants disqualified on initial and renewal claims, and those for whom the adjudication on an initial claim was to the effect that the claimant was ineligible to establish either a regular, seasonal or fishing benefit period.

Benefit period not established: The minimum contribution requirements for any type of benefit have not been met. This figure thus represents the net total of persons with insufficient contributions to establish a benefit period under either the regular, seasonal or fishing benefit provisions, based on decisions arising from initial claims only. Subsequent decisions arising from a revised claim and constituting a reversal of the initial adjudication are not taken into account, but such decisions would reduce the number of benefit periods not established.

Disqualification: A disqualification is imposed because of circumstances surrounding the claim which render the claimant ineligible for the receipt of benefit either for a stated period or so long as the condition causing the disqualification continues.



1010723066

Where it is established that loss of employment was voluntary and without just cause on the part of the claimant, i.e., he left employment of his own volition or was dismissed because of misconduct, the maximum disqualification is six weeks; claimants participating in a labour dispute in which they are directly interested are disqualified for the duration of the work stoppage. In assessing the number of cases of disqualification, no distinction is made as to the type of claim, hence disqualifications arising from revised claims are included. The cases mentioned here serve as examples only and do not constitute a complete summary of conditions under which a disqualification may be imposed. Sections 59-66 of the Act contain a description of these conditions.

Weeks compensated: Calendar weeks in respect of which some benefit, either regular, seasonal or fishing, was paid. A compensated week is counted in the month in which the copy of the payment voucher is received in the District Treasury Office, which is not necessarily the month in which the week of unemployment occurred.

Amount of benefit: The sum of all benefit payments made during the month. This comprises regular, seasonal or fishing benefit.

Complete week: A week in respect of which a claimant received the full weekly rate of benefit authorized on that benefit period.

Partial week: A week for which a claimant received less than the full weekly rate authorized. A partial week may be due to excess earnings resulting in a reduced payment in direct proportion to the amount of such earnings. If a claimant was "not available for work" on any day or days during a week, a reduction will be made in the weekly rate proportionate to the number of days of "non-availability". A reduction will occur also if a portion of a week was designated as part of the prescribed waiting period.

Excess earnings: Earnings during a week in excess of the allowable earnings for a claimant's weekly benefit rate. As an example, a claimant whose weekly rate is \$30.00 may earn up to \$15.00 in a week without suffering a reduction in benefit; however, in a week where he earns \$17.00 his benefit will be reduced to \$28.00.

Beneficiaries: Persons who received one or more benefit payments. The estimate, based on the total number of payment documents for the month, represents the average weekly number of beneficiaries.

Seasonal benefit: Benefit payable during the period commencing with the Sunday prior to December 1 and ending with the Saturday after May 15, to

certain classes of claimants unable to fulfil the requirements under the regular benefit provisions of the Act. Claimants in Class A must prove 15 contributions since the Saturday preceding the 31st day of March immediately prior to the date of claim, while qualification under class B is contingent upon a regular benefit period having terminated since the Saturday following the 15th day of May immediately prior to the claim.

Fishermen: For purposes of regular benefit, a fisherman is a claimant showing five or more fishing contribution weeks during the last 52 weeks. For purposes of seasonal benefit, however, any claimant whose qualifying contributions include even one fishing contribution week is classed as a fishing claimant.

Fishing contribution week: Any week for which a fishing contribution is recorded, whether or not a contribution was also made in respect of other insured employment. Specially designed stamps are used to record insured employment in fishing and employers using the bulk pay method must report employee's fishing contributions separately from those relating to other insurable employment.

Industrial Classification of persons filing new claims for Unemployment Insurance: This information is based on a sample of documents in respect of initial claims filed in local offices during a month. To ensure that all such claims have an equal chance of being included in the study, the documents are accumulated until the end of the third week following the month in which the claim was filed.

The sampling ratio varies from one hundred per cent in the Atlantic provinces (during the period of low claim) to five per cent in Ontario. The sample embraces all new initial claims without regard to benefit status, i.e. failures as well as disqualifications are included. However, it excludes initial claims classed as transitional, i.e., those taken on behalf of persons terminating one benefit period and seeking re-establishment of credits, since such claims are not new cases of separation from employment.

At the present time only the new separations requiring an **initial claim** are included in this study, as these are the only documents forwarded to the Bureau for analysis. The ratio of initial to renewal claims fluctuates with the claim load, so that during the months of heavy claim, it is approximately 3:1.

Geographical classification: The provinces as defined in this bulletin are administrative entities. Hence, Ontario excludes Sioux Lookout for which data are included with Manitoba; British Columbia includes Whitehorse; Quebec excludes Magdalen Islands for which data are included in New Brunswick.