

CATALOGUE No.

**73-001**

MONTHLY



# STATISTICAL REPORT ON THE OPERATION OF THE UNEMPLOYMENT INSURANCE ACT SEPTEMBER 1967

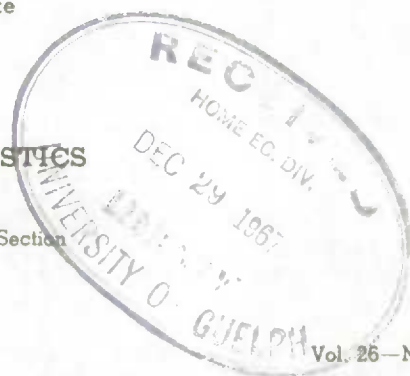
(Compiled from material supplied by the Unemployment Insurance Commission)

*Published by Authority of*  
The Minister of Trade and Commerce

**DOMINION BUREAU OF STATISTICS**  
Labour Division  
Unemployment Insurance and Manpower Section

December 1967  
8006-509

Price: 20 cents  
\$2.00 a year



Vol. 26—No. 9

## TABLE OF CONTENTS

	Page
Chart, Unemployment Insurance Activities .....	3
Commentary .....	4

### List of Tables

#### Consolidated Data on Claims for Regular and Seasonal Benefit:

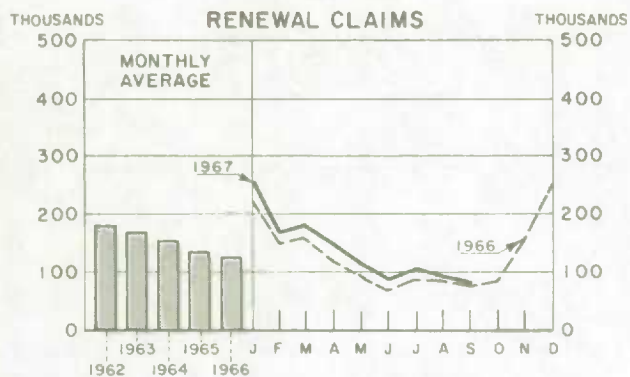
Summary Table .....	6
Table:	
1. Estimates of the Insured Population under the Unemployment Insurance Act .....	7
2. Number of Initial and Renewal Claims Filed in Local Offices in Each Province .....	7
3. Claimants Currently Reporting to Local Offices by Number of Weeks on Claim, Province and Sex .....	8
4. Disposition of Initial and Renewal Claims, and Claims Pending at the End of the Month, by Province .....	9
5. Number of Claimants Not Entitled to Benefit in Each Province, with Chief Reasons for Non-entitlement .....	10
6. Estimates of the Number of Beneficiaries, by Province .....	11
7. Benefit Payments, Showing Number of Weeks and Amount Paid, by Province .....	11
8. Number of Weeks Compensated, Classified as to Complete and Partial Weeks, and Showing Separately the Number of Partial Weeks Due to Excess Earnings, by Province .....	12
Glossary of Terms .....	13

Historical data since 1941 are contained in the July 1966 issue in this series, while annual data for the calendar years 1965 and 1966 are included in the January 1967 issue in this series.

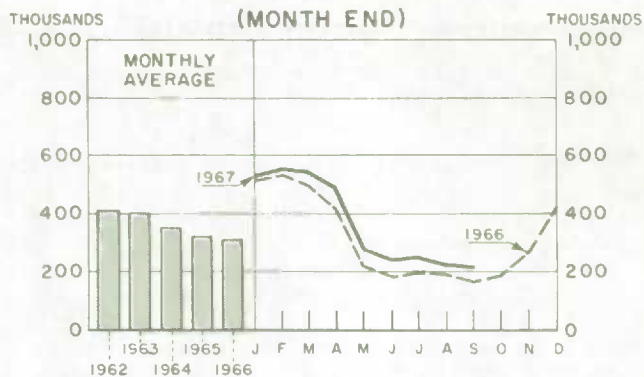
For information regarding the personal characteristics, occupational and industrial status of both the insured population and persons establishing benefit periods, see the "Annual Report on Benefit Periods Established and Terminated under the Unemployment Insurance Act", DBS Catalogue No. 73-201.

# UNEMPLOYMENT INSURANCE ACTIVITIES

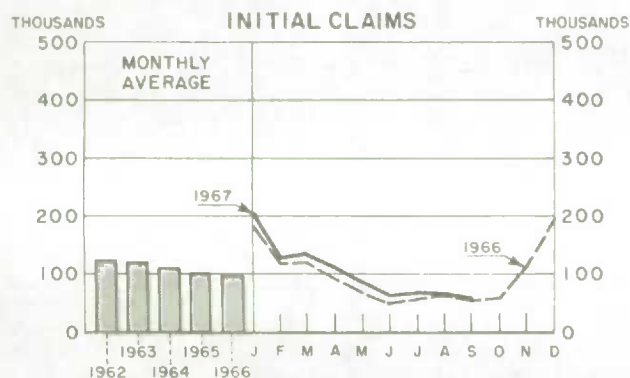
## INITIAL AND RENEWAL CLAIMS



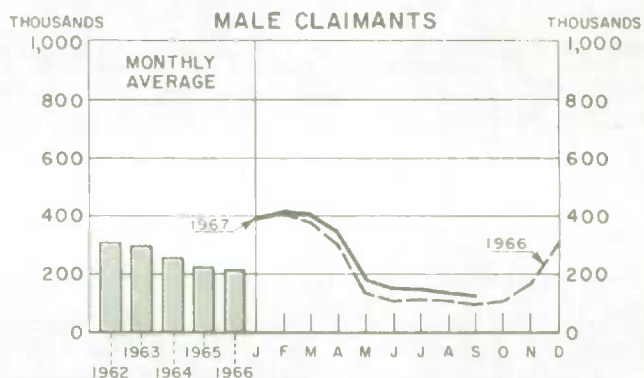
## TOTAL CLAIMANTS (MONTH END)



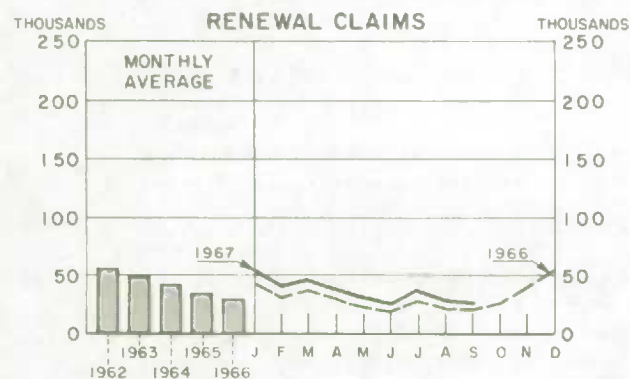
## INITIAL CLAIMS



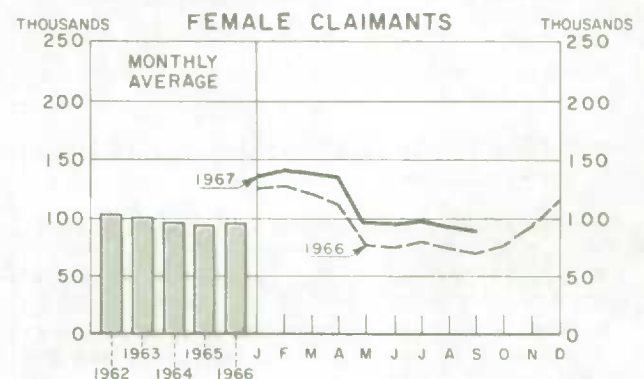
## MALE CLAIMANTS



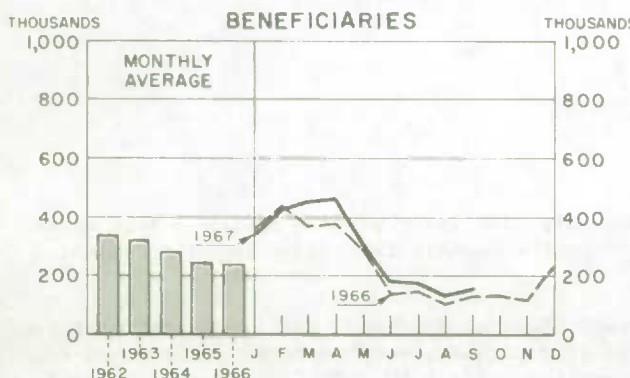
## RENEWAL CLAIMS



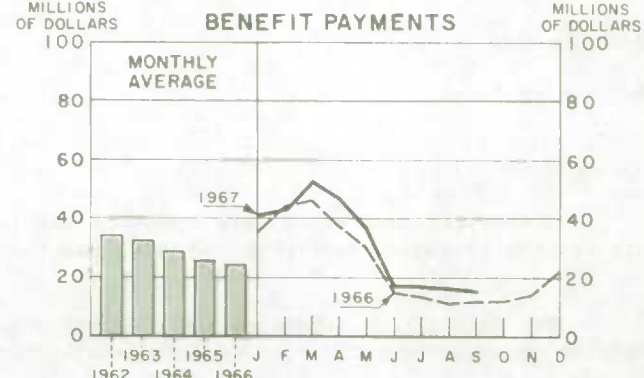
## FEMALE CLAIMANTS



## BENEFICIARIES



## BENEFIT PAYMENTS



## CLAIMS AND BENEFIT PAYMENTS

SEPTEMBER 1967

### Claimants at month-end

Claimants for unemployment insurance benefit numbered 210,900 on September 29, a decrease of 16,200 from the 227,100 on August 31 but an increase of 46,000 over the 164,900 recorded one year ago. While males accounted for 70 per cent of the 16,200 decrease from August 31, they comprised 60 per cent of the 46,000 increase since September 30, 1966. This latter proportion (60 per cent) approximates the proportion of male claimants at each of the three dates under consideration.

While the month-over-month decrease was 16,200 (or 7 per cent) the decrease for the same intervals in 1966 was 22,300 (or 12 per cent) of which more than 80 per cent was accounted for by males.

Almost 50 per cent of the 123,300 male claimants recorded on September 29 were in the category 1 to 4 weeks on claim as against thirty-five per cent of the females. Fewer than 30 per cent of the males as against 40 per cent of the females had been on continuous claim more than 13 weeks.

### Initial and renewal claims

A total of 82,700 initial and renewal claims were filed in local offices across Canada in September, in comparison with 73,000 in September 1966. The August total was 92,500. Almost 95 per cent of the claims filed in September were in respect of persons separated from employment during the month.

### Beneficiaries and benefit payments

The average weekly number of beneficiaries was estimated at 160,100 for September, in comparison with 138,200 for August and 128,200 for September 1966. Benefit payments during September amounted to \$15.8 million versus \$16.8 million in August and \$12.3 million one year ago. The average weekly payment was \$24.62 in September, \$24.38 in August and \$23.93 in September 1966.

### Provincial data

All provinces shared in the August 31 to September 29 decline in the claimant count. The largest percentage declines occurred in Nova Scotia and Prince Edward Island, 14 and 12 per cent respectively; Ontario and Alberta each showed 10 per cent. In comparison with the previous year all provinces except Nova Scotia and New Brunswick reported higher claimant totals; more than 90 per cent of the total increase occurred in Ontario and Quebec.

It might be noted that while males represented almost 60 per cent of the overall claimant count at September 29, they accounted for only 45 per cent in the Prairie Provinces. In this area the proportion of male claimants tends to be consistently lower than that for Canada during the summer months.

## Percentage Changes in Month-end Claimant Count

	August 31 to September 29, 1967			September 30, 1966 to September 29, 1967			August 31 to September 30, 1966		
	Total	Male	Female	Total	Male	Female	Total	Male	Female
Canada .....	- 7	- 9	- 5	+ 28	+ 29	+ 26	- 12	- 16	- 6
Newfoundland .....	- 4	- 4	- 2	+ 8	+ 5	+ 16	+ 6	+ 9	- 1
Prince Edward Island ..	- 12	- 19	- 5	+ 3	- 12	+ 25	- 13	- 20	+ 2
Nova Scotia .....	- 14	- 16	- 10	- 4	- 6	-	- 3	- 4	- 1
New Brunswick .....	- 4	- 6	- 1	- 12	- 17	- 1	- 1	- 3	+ 4
Quebec .....	- 3	- 4	+ 1	+ 39	+ 49	+ 26	- 5	- 6	- 3
Ontario .....	- 10	- 12	- 9	+ 39	+ 44	+ 34	- 26	- 36	- 12
Manitoba .....	- 2	- 2	- 2	+ 32	+ 36	+ 30	- 17	- 18	- 17
Saskatchewan .....	- 4	+ 1	- 8	+ 12	+ 18	+ 8	- 7	- 14	- 2
Alberta .....	- 10	- 4	- 15	+ 9	+ 10	+ 9	+ 6	- 6	+ 19
British Columbia .....	- 9	- 13	- 2	+ 11	+ 2	+ 27	+ 7	+ 10	+ 2

The monthly claim volume was lower than in August in all provinces except Newfoundland and Saskatchewan where small increases were recorded. The bulk of the overall decline occurred in Ontario. The increase over claims filed in September 1966 resulted from relatively large increases in Ontario and Quebec which were partially offset by decreases in other provinces.

## Percentage Changes in Claims Filed, by Province

	August to September 1967			September 1966 to September 1967			August to September 1966		
	Total	Initial	Renewal	Total	Initial	Renewal	Total	Initial	Renewal
Canada .....	- 11	- 12	- 8	+ 13	+ 9	+ 23	- 13	- 18	+ 2
Newfoundland .....	+ 8	+ 5	+ 17	- 3	- 5	-	+ 26	+ 20	+ 40
Prince Edward Island ..	- 16	- 8	- 34	- 29	- 16	- 54	- 17	- 23	- 1
Nova Scotia .....	- 25	- 28	- 17	- 6	- 7	- 5	- 6	- 9	- 2
New Brunswick .....	- 8	- 6	- 13	- 28	- 21	- 42	+ 16	+ 2	+ 54
Quebec .....	- 2	- 3	-	+ 20	+ 15	+ 31	-	- 2	+ 5
Ontario .....	- 19	- 23	- 10	+ 28	+ 20	+ 53	- 34	- 40	- 5
Manitoba .....	-	+ 4	- 11	+ 13	+ 14	+ 9	- 3	- 6	+ 11
Saskatchewan .....	+ 25	+ 25	+ 25	+ 17	+ 11	+ 43	- 5	- 6	- 4
Alberta .....	- 2	- 2	- 1	- 13	- 16	- 4	- 2	+ 2	- 15
British Columbia .....	- 8	-	- 20	- 2	- 4	+ 2	+ 11	+ 17	- 1

.. Figures not available.

- Nil.

Summary Table

Activity	Sept. 1967	Aug. 1967	Sept. 1966	% change from		Cumulative data			
				Aug. 1967	Sept. 1966	January to September		12 months ending September	
						1967	1966	1967	1966
	thousands					thousands			
Insured population as at month-end .....	..	4,832	4,535	..	..	..	4,516*	..	4,478*
Initial and renewal claims filed:									
Total .....	83	93	73	- 11	+ 13	1,238	1,057	1,728	1,554
Initial .....	56	64	52	- 12	+ 9	910	801	1,279	1,174
Renewal .....	26	29	21	- 8	+ 23	328	256	450	380
Claimants currently reporting to local offices .....	211	227	165	- 7	+ 28	370*	322*	350*	311*
Beneficiaries (weekly average) .....	160	138	128	+ 16	+ 25	294*	260*	260*	232*
Weeks compensated .....	641	691	513	- 7	+ 25	11,426	10,029	13,438	11,857
Benefit paid ..... \$	15,772	16,849	12,265	- 6	+ 29	290,685	246,252	339,734	290,273
Average weekly benefit ..... \$	24.62	24.38	23.93	+ 1	+ 3	25.44	24.55	25.28	24.48

\* Monthly average.



TABLE 1. Estimates of the Insured Population under the Unemployment Insurance Act (Revised) (1)

End of	Total(2)	Employed	Claimants
1967 - August .....	4,832,000	4,604,900	227,100
July .....	4,803,000	4,556,700	246,300
June .....	4,751,000	4,508,200	242,800
May .....	4,684,000	4,402,900	281,100
April .....	4,763,000	4,270,700	492,300
March .....	4,769,000	4,225,200	543,800
February .....	4,697,000	4,145,200	551,800
January .....	4,700,000	4,168,100	531,900
1966 - December .....	4,641,000	4,217,600	423,400
November .....	4,606,000	4,339,700	266,300
October .....	4,538,000	4,353,700	184,300
September .....	4,535,000	4,370,100	164,900
August .....	4,596,000	4,408,800	187,200
July .....	4,539,000	4,343,000	196,000
June .....	4,532,000	4,350,700	181,300
May .....	4,487,380	4,209,540	277,840

(1) May 1966 to August 1967 revised on the basis of book renewal at June 1, 1966.

(2) Commencing March 31, 1967, agricultural workers are included, as coverage was extended to certain workers in this industry April 1, 1967.

TABLE 2. Number of Initial and Renewal Claims Filed in Local Offices in Each Province

Province	1967 - September - 1966					
	Total(1)	Initial	Renewal	Total	Initial	Renewal
CANADA .....	82,722	56,458	26,264	72,968	51,672	21,296
Newfoundland .....	1,779	1,213	566	1,841	1,274	567
Prince Edward Island .....	193	151	42	272	180	92
Nova Scotia .....	2,950	1,945	1,005	3,155	2,098	1,057
New Brunswick .....	2,366	1,687	679	3,305	2,126	1,179
Quebec .....	27,246	17,785	9,461	22,724	15,482	7,242
Ontario .....	30,572	21,369	9,203	23,813	17,792	6,021
Manitoba .....	1,794	1,395	399	1,589	1,224	365
Saskatchewan .....	1,179	923	256	1,008	829	179
Alberta .....	2,480	1,920	560	2,867	2,285	582
British Columbia .....	12,163	8,070	4,093	12,394	8,382	4,012

(1) In addition, revised claims received numbered 26,194.

TABLE 3. Claimants Currently Reporting to Local Offices by Number of Weeks on Claim, Province and Sex  
(Counted on last working day of the month)

Province and sex	Total claimants	Number of weeks on claim (based on 20 per cent sample)				Total claimants
		1-4	5-13	14-26	27 or more(1)	
		September 29, 1967				September 30, 1966
CANADA .....	210,863	90,554	51,038	42,526	26,745	164,877
Male .....	123,320	59,847	28,742	21,060	13,671	95,292
Female .....	87,543	30,707	22,296	21,466	13,074	69,585
Newfoundland .....	5,561	1,989	1,621	1,283	668	5,171
Male .....	4,028	1,527	1,227	873	401	3,846
Female .....	1,533	462	394	410	267	1,325
Prince Edward Island .....	664	210	229	153	72	645
Male .....	339	108	131	68	32	385
Female .....	325	102	98	85	40	260
Nova Scotia .....	8,323	2,995	1,929	1,748	1,651	8,676
Male .....	5,612	2,179	1,264	1,125	1,044	5,952
Female .....	2,711	816	665	623	607	2,724
New Brunswick .....	6,853	2,490	1,621	1,711	1,031	7,769
Male .....	4,403	1,700	979	1,149	575	5,299
Female .....	2,450	790	642	562	456	2,470
Quebec .....	70,328	31,136	17,247	14,263	7,682	50,436
Male .....	44,696	21,758	10,907	7,943	4,088	30,080
Female .....	25,632	9,378	6,340	6,320	3,594	20,356
Ontario .....	78,456	33,445	19,075	15,663	10,273	56,300
Male .....	42,264	20,882	9,651	6,692	5,039	29,249
Female .....	36,192	12,563	9,424	8,971	5,234	27,051
Manitoba .....	5,625	1,866	1,618	1,147	994	4,247
Male .....	2,591	979	726	462	424	1,907
Female .....	3,034	887	892	685	570	2,340
Saskatchewan .....	3,131	856	975	738	562	2,805
Male .....	1,276	419	419	168	270	1,085
Female .....	1,855	437	556	570	292	1,720
Alberta .....	6,582	2,779	1,339	1,449	1,015	6,012
Male .....	3,013	1,365	499	644	505	2,731
Female .....	3,569	1,414	840	805	510	3,281
British Columbia .....	25,340	12,788	5,384	4,371	2,797	22,816
Male .....	15,098	8,930	2,939	1,936	1,293	14,758
Female .....	10,242	3,858	2,445	2,435	1,504	8,058

(1) The bulk of the cases in this group were on claim from 27-39 weeks.

Note: Values less than 50 subject to relatively large sampling variability.



TABLE 4. Disposition of Initial and Renewal Claims and Claims Pending at the End of the Month, by Province

Province	Adjudicated					Pending	
	Total	Entitled to benefit		Not entitled to benefit		Initial	Renewal
		Initial	Renewal	Initial	Renewal		
	September 1967						
CANADA .....	84,764(1)	33,005	22,547	24,182	5,030	19,672	7,199
Newfoundland .....	1,677	592	433	550	102	462	168
Prince Edward Island .....	223	100	45	68	10	43	11
Nova Scotia .....	3,092	1,111	813	920	248	587	225
New Brunswick .....	2,356	906	587	733	130	542	221
Quebec .....	28,113	10,509	8,358	7,661	1,585	6,334	2,594
Ontario .....	31,648	12,918	7,793	8,927	2,010	7,843	2,621
Manitoba .....	1,680	721	310	578	71	374	115
Saskatchewan .....	1,109	472	212	384	41	315	80
Alberta .....	2,358	973	447	842	96	593	156
British Columbia .....	12,508	4,703	3,549	3,519	737	2,579	1,008
	September 1966						
CANADA .....	80,181	33,643	17,112	24,652	4,774	16,974	6,455
Newfoundland .....	1,728	617	420	590	101	536	212
Prince Edward Island .....	322	144	89	73	16	61	18
Nova Scotia .....	3,353	1,379	886	910	178	638	295
New Brunswick .....	3,290	1,418	867	860	145	640	403
Quebec .....	23,553	8,935	5,893	7,130	1,595	5,288	2,036
Ontario .....	28,979	13,071	4,685	9,689	1,534	5,518	1,821
Manitoba .....	1,749	813	304	565	67	321	97
Saskatchewan .....	1,162	601	156	377	28	216	55
Alberta .....	3,270	1,683	499	972	116	602	149
British Columbia .....	12,775	4,982	3,313	3,486	994	3,154	1,369

(1) In addition 27,537 revised claims were disposed of. Of these, 2,853 were special requests not granted and 1,372 were appeals by claimants. There were 5,663 revised claims pending at the end of the month.

TABLE 5. Number of Claimants Not Entitled to Benefit in Each Province during September 1967 and 1966  
with Chief Reasons for Non-entitlement

Chief reasons for non-entitlement		Canada	Nfld.	P.E.I.	N.S.	N.B.	Que.	Ont.	Man.	Sask.	Alta.	B.C.
Benefit period not established .....	1967(1)	11,320	247	35	383	406	3,977	3,887	241	143	335	1,666
	1966	9,706	225	41	428	458	3,332	2,973	207	136	364	1,542
Claimants disqualified .....	1967	28,391	737	72	1,235	865	8,496	10,753	864	624	1,125	3,620
	1966	31,353	864	99	1,115	1,048	9,212	12,243	923	659	1,293	3,897
Not unemployed .....	1967	538	24	3	40	20	162	190	17	19	10	53
	1966	554	21	1	24	13	147	227	25	18	22	56
Not capable of and not available for work .....	1967	8,519	193	25	318	280	2,468	3,148	388	278	458	963
	1966	8,003	187	35	261	231	2,430	3,043	334	273	408	801
Loss of work due to a labour dispute .....	1967	792	6	-	144	13	254	239	-	2	7	127
	1966	1,914	105	3	56	139	554	289	18	7	55	688
Refused offer of work and neglected opportunity to work .....	1967	250	1	1	17	17	67	109	3	4	9	22
	1966	734	7	4	30	30	250	257	23	27	30	76
Discharged for misconduct ....	1967	1,091	23	2	30	19	444	408	17	9	31	108
	1966	1,071	32	6	48	49	413	350	13	6	41	113
Voluntarily left employment without just cause .....	1967	5,736	192	18	251	197	1,747	1,897	144	89	283	918
	1966	6,293	199	21	256	254	1,782	2,150	151	90	309	1,081
Other reasons .....	1967	11,465	298	23	435	319	3,354	4,762	295	223	327	1,429
	1966	12,784	313	29	440	332	3,636	5,927	359	238	428	1,082
(1) Previously failed on initial claim but subsequently established on revised claim during September .....	1967	1,929	39	4	82	47	746	753	14	6	36	202

TABLE 6. Estimates of the Number of Beneficiaries, by Province

Province	Average per week	
	1967 - September - 1966	
	thousands	
CANADA .....	160.1	128.2
Newfoundland .....	4.5	4.1
Prince Edward Island .....	0.5	0.5
Nova Scotia .....	6.2	6.3
New Brunswick .....	4.6	5.2
Quebec .....	51.8	37.7
Ontario .....	63.6	47.3
Manitoba .....	4.0	3.7
Saskatchewan .....	2.4	2.2
Alberta .....	4.8	5.0
British Columbia .....	17.8	16.2

TABLE 7. Benefit Payments, by Province

Province	1967 - September - 1966			
	Weeks	Amount	Weeks	Amount
	number	dollars	number	dollars
CANADA .....	640,507	15,771,588	512,608	12,264,891
Newfoundland .....	18,097	435,064	16,229	402,722
Prince Edward Island .....	2,121	46,166	1,974	43,404
Nova Scotia .....	24,823	588,522	25,086	560,613
New Brunswick .....	18,232	421,773	20,769	486,300
Quebec .....	207,076	5,137,017	150,900	3,526,253
Ontario .....	254,274	6,304,809	189,319	4,661,674
Manitoba .....	15,961	363,472	14,866	325,015
Saskatchewan .....	9,421	213,457	8,671	188,058
Alberta .....	19,258	453,539	20,165	458,947
British Columbia .....	71,244	1,807,769	64,629	1,611,905

TABLE 8. Number of Weeks of Benefit, by Province

Province	Complete weeks	Partial weeks	
		Total	Due to excess earnings
	September 1967		
CANADA .....	596,298	44,209	32,319
Newfoundland .....	16,529	1,568	1,238
Prince Edward Island .....	1,990	131	98
Nova Scotia .....	22,022	2,801	2,315
New Brunswick .....	16,291	1,941	1,452
Quebec .....	195,125	11,951	8,682
Ontario .....	238,108	16,166	11,599
Manitoba .....	14,636	1,325	984
Saskatchewan .....	8,697	724	486
Alberta .....	17,799	1,459	1,030
British Columbia .....	65,101	6,143	4,435
	September 1966		
CANADA .....	470,738	41,870	31,888
Newfoundland .....	15,049	1,180	939
Prince Edward Island .....	1,774	200	157
Nova Scotia .....	21,835	3,251	2,719
New Brunswick .....	18,258	2,511	1,887
Quebec .....	140,524	10,376	7,536
Ontario .....	174,260	15,059	11,821
Manitoba .....	13,552	1,314	969
Saskatchewan .....	8,012	659	460
Alberta .....	18,670	1,495	1,083
British Columbia .....	58,804	5,825	4,317

## Glossary of Terms

**Insured population:** For purposes of this report, the insured population is defined as the number of persons estimated as currently in contact with the Unemployment Insurance Commission either as contributors or as claimants. The estimates are revised once a year when data from the book renewal are available.

**Employed population:** The number of persons estimated as currently contributing under the scheme. Estimates are based on a 10 per cent sample and hence are subject to sampling variability.

**Claimant population:** The count of persons currently reporting to the local offices as at the end of the month. An exception occurs in the month which serves as a benchmark, i.e., May or June, when the claimant count represents the number of persons reporting to local offices as claimants during the first two weeks of book renewal.

**Initial claim:** An application for benefit from a person for whom there is no benefit period in existence. This category includes both regular and seasonal claims, since it is impossible to determine, at the time of filing a claim, the type of benefit for which the claimant will subsequently qualify. On an initial claim the contribution history for the two years preceding the claim is examined. This is required in order to test attachment to insured employment and thus determine the type of benefit for which the claimant is eligible, if at all. In cases of eligibility, the record of the qualifying period is used to calculate the weekly rate of benefit and maximum entitlement for the benefit period. Only one initial claim is required for each benefit period.

**Benefit period:** A period commencing with the week in which the initial claim is made, provided the qualifying conditions are fulfilled. The maximum length of the benefit period is 52 weeks, in the case of claimants qualifying under the regular terms of the Act. Seasonal benefit periods may be established only from December 1 to mid-May, with a maximum length of 24 weeks. In either case, however, the benefit period terminates with exhaustion of benefit.

**Renewal claim:** An application for benefit from an insured person during the currency of a benefit period. As in the case of initial claims, this category includes renewal claims from all classes of claimants, i.e., regular, seasonal and fishing.

**Initial and renewal claims filed:** An approximation of the number of new cases of recorded unemployment among insured persons during a period. However, an initial claim representing a request for re-establishment of a benefit period with no actual interruption in the period on claim would not constitute a new case of unemployment. To the extent that such claims are filed in any month, the total overstates the number of new cases.

**Revised claims:** Those, other than initial or renewal, which must be considered by an insurance officer, e.g., involving dependency, extension of qualifying period, etc. A revised claim is thus an administrative device to initiate action for reconsideration of an existing initial or renewal claim.

**Claimants currently reporting to local offices:** All persons currently reporting to local offices to claim unemployment insurance benefit, either regular, seasonal or fishing. Under the Unemployment Insurance Act a person may claim benefit for any week during which he did not work a full working week.

**Number of weeks on claim:** The cumulative number of weeks during which a claimant has reported to prove unemployment during the current period on claim. The count commences with the week in which the initial (or renewal) claim is filed and continues unbroken so long as the claimant continues to report as directed. Cases occur in which a spell of unemployment extends beyond the termination of a benefit period and a new benefit period is immediately established with no actual interruption of the period on claim. In such cases the cumulative number of weeks is transferred from the previous claim document to that covering the subsequent benefit period and the count continued. This procedure applies also for contiguous periods on regular and seasonal benefit. Excluded from the count are any weeks for which a claimant reported "non-availability" during a complete week.

**Entitled to benefit:** For purposes of this report, this category comprises those adjudications arising from initial claims on which a benefit period (regular, seasonal or fishing) is shown as established and no disqualification imposed and adjudications indicating "approval" on renewal claims, either regular, seasonal or fishing.

**Not entitled to benefit:** Claimants disqualified on initial and renewal claims, and those for whom the adjudication on an initial claim was to the effect that the claimant was ineligible to establish either a regular, seasonal or fishing benefit period.

**Benefit period not established:** The minimum contribution requirements for any type of benefit have not been met. This figure thus represents the net total of persons with insufficient contributions to establish a benefit period under either the regular, seasonal or fishing benefit provisions, based on decisions arising from initial claims only. Subsequent decisions arising from a revised claim and constituting a reversal of the initial adjudication are not taken into account, but such decisions would reduce the number of benefit periods not established.

**Disqualification:** A disqualification is imposed because of circumstances surrounding the claim which render the claimant ineligible for the receipt of benefit either for a stated period or so long as the condition causing the disqualification continues.



Where it is established that loss of employment was voluntary and without just cause on the part of the claimant, i.e., he left employment of his own volition or was dismissed because of misconduct, the maximum disqualification is six weeks; claimants participating in a labour dispute in which they are directly interested are disqualified for the duration of the work stoppage. In assessing the number of cases of disqualification, no distinction is made as to the type of claim, hence disqualifications arising from revised claims are included. The cases mentioned here serve as examples only and do not constitute a complete summary of conditions under which a disqualification may be imposed. Sections 59-66 of the Act contain a description of these conditions.

**Weeks compensated:** Calendar weeks in respect of which some benefit, either regular, seasonal or fishing, was paid. A compensated week is counted in the month in which the copy of the payment voucher is received in the District Treasury Office, which is not necessarily the month in which the week of unemployment occurred.

**Amount of benefit:** The sum of all benefit payments made during the month. This comprises regular, seasonal or fishing benefit.

**Complete week:** A week in respect of which a claimant received the full weekly rate of benefit authorized on that benefit period.

**Partial week:** A week for which a claimant received less than the full weekly rate authorized. A partial week may be due to excess earnings resulting in a reduced payment in direct proportion to the amount of such earnings. If a claimant was "not available for work" on any day or days during a week, a reduction will be made in the weekly rate proportionate to the number of days of "non-availability". A reduction will occur also if a portion of a week was designated as part of the prescribed waiting period.

**Excess earnings:** Earnings during a week in excess of the allowable earnings for a claimant's weekly benefit rate. As an example, a claimant whose weekly rate is \$30.00 may earn up to \$15.00 in a week without suffering a reduction in benefit; however, in a week where he earns \$17.00 his benefit will be reduced to \$28.00.

**Beneficiaries:** Persons who received one or more benefit payments. The estimate, based on the total number of payment documents for the month, represents the average weekly number of beneficiaries.

**Seasonal benefit:** Benefit payable during the period commencing with the Sunday prior to December 1 and ending with the Saturday after May 15, to

certain classes of claimants unable to fulfil the requirements under the regular benefit provisions of the Act. Claimants in Class A must prove 15 contributions since the Saturday preceding the 31st day of March immediately prior to the date of claim, while qualification under class B is contingent upon a regular benefit period having terminated since the Saturday following the 15th day of May immediately prior to the claim.

**Fishermen:** For purposes of regular benefit, a fisherman is a claimant showing five or more fishing contribution weeks during the last 52 weeks. For purposes of seasonal benefit, however, any claimant whose qualifying contributions include even one fishing contribution week is classed as a fishing claimant.

**Fishing contribution week:** Any week for which a fishing contribution is recorded, whether or not a contribution was also made in respect of other insured employment. Specially designed stamps are used to record insured employment in fishing and employers using the bulk pay method must report employee's fishing contributions separately from those relating to other insurable employment.

**Industrial Classification of persons filing new claims for Unemployment Insurance:** This information is based on a sample of documents in respect of initial claims filed in local offices during a month. To ensure that all such claims have an equal chance of being included in the study, the documents are accumulated until the end of the third week following the month in which the claim was filed.

The sampling ratio varies from one hundred per cent in the Atlantic provinces (during the period of low claim) to five per cent in Ontario. The sample embraces all new initial claims without regard to benefit status, i.e. failures as well as disqualifications are included. However, it excludes initial claims classed as transitional, i.e., those taken on behalf of persons terminating one benefit period and seeking re-establishment of credits, since such claims are not new cases of separation from employment.

At the present time only the new separations requiring an **initial claim** are included in this study, as these are the only documents forwarded to the Bureau for analysis. The ratio of initial to renewal claims fluctuates with the claim load, so that during the months of heavy claim, it is approximately 3:1.

**Geographical classification:** The provinces as defined in this bulletin are administrative entities. Hence, Ontario excludes Sioux Lookout for which data are included with Manitoba; British Columbia includes Whitehorse; Quebec excludes Magdalen Islands for which data are included in New Brunswick.





STATISTICS CANADA LIBRARY  
BIBLIOTHÈQUE STATISTIQUE CANADA



1010723068