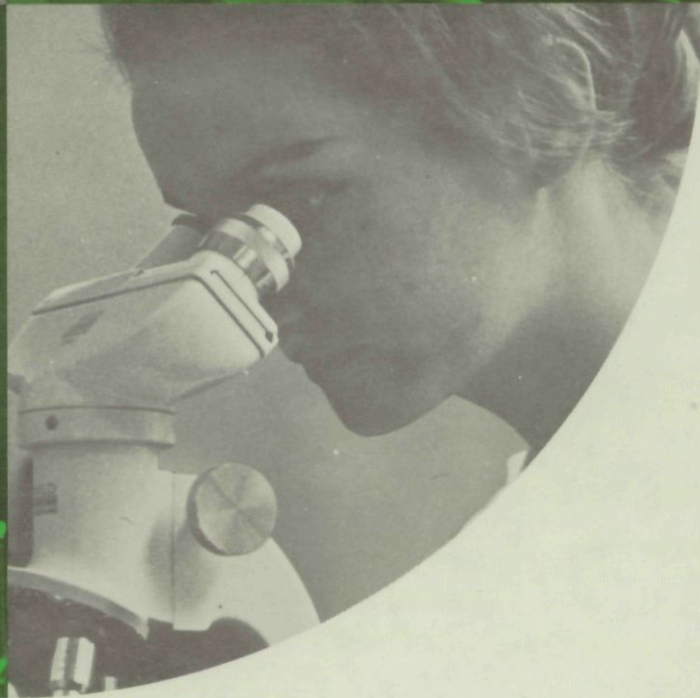
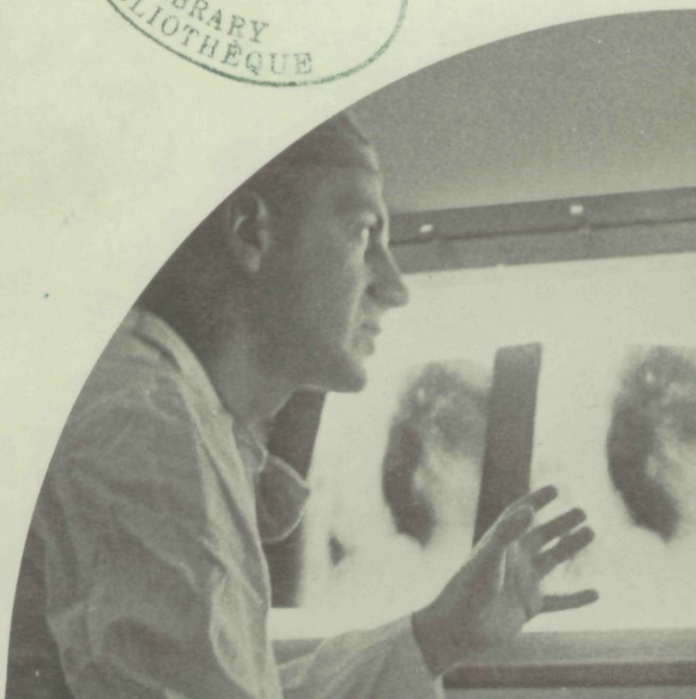
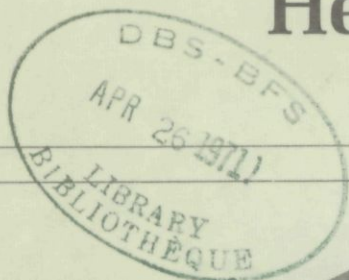


# Health manpower in hospitals

PHYSIO-OCCUPATIONAL THERAPISTS

1961-68





DOMINION BUREAU OF STATISTICS  
Health and Welfare Division  
Institutions Section

AiHx  
1114906

# HEALTH MANPOWER IN HOSPITALS

## PHYSIO-OCCUPATIONAL THERAPISTS

1961 - 68

*Published by Authority of*  
The Minister of Industry, Trade and Commerce

April 1971  
9002-554

Price: 50 cents

Information Canada  
Ottawa



## PREFACE

A series of occasional reports under the general title of *Health Manpower in Hospitals* have been produced by the Institutions Section, Health and Welfare Division, DBS. These reports form part of the over-all Institutions Section series of surveys and reports on Health and Welfare Manpower including the Annual Salary Surveys series relating to Hospital Nursing Personnel and Public Health Nurses.

These reports which are based upon published and unpublished tabulations of the Institutions Section and upon other DBS data are designed to provide an in-depth study on many of the various professional and technical categories of personnel in Canadian hospitals. The data are drawn from the detailed information collected on the Annual Returns of Hospitals (HS-1 and HS-2) from 1961 onwards and reflect such items as changes in employment patterns, workloads, turnover rates, etc., for each province and Canada.

Contained in these reports are brief textual highlights and tables of historical comparisons, as well as definitions of terms (where required). The volume of data presented varies according to the availability of detail on each professional or technical group. The reports will be up-dated periodically.

In addition to a general publication, i.e., *Health Manpower in Hospitals - General, 1961-68* (Catalogue No. 83-507), which gives the reader a general background of trends in hospital manpower, there are a number of publications dealing with a particular group of hospital personnel (see back cover of this report).

WALTER E. DUFFETT,  
*Dominion Statistician.*



## TABLE OF CONTENTS

	Page
Explanatory Notes and Glossary .....	7
Introduction .....	9
 Table	
1. Hospitals Operating and Reporting, by Province, 1961 -68 .....	11
2. Qualified Physiotherapists Employed as a Percentage of Total Hospital Personnel, General and Allied Special Hospitals, by Province, 1961 -68 .....	12
3. Qualified Occupational Therapists Employed as a Percentage of Total Hospital Personnel, General and Allied Special Hospitals, by Province, 1961 -68 .....	12
4. Qualified Physio-Occupational Therapists Employed by General and Allied Special Hospitals per 100,000 Population, by Province, 1961 -68 .....	13
5. Turnover Rates of Full-time Qualified Physio-Occupational Therapists, General and Allied Special Hospitals, by Province, 1962 -68 .....	14
6. Qualified Physiotherapists Employed Full-time and Part-time in Reporting General and Allied Special Hospitals, by Province, 1961 -68 .....	14
7. Qualified Occupational Therapists Employed Full-time and Part-time in Reporting General and Allied Special Hospitals, by Province, 1961 -68 .....	15
8. Separations of Qualified Physiotherapists Employed Full-time from Reporting General and Allied Special Hospitals, by Province, 1961 -68 .....	16
9. Separations of Qualified Occupational Therapists Employed Full-time from Reporting General and Allied Special Hospitals, by Province, 1961 -68 .....	17
10. Paid Hours of Qualified Physiotherapists Employed in Reporting General and Allied Special Hospitals, by Province, 1962 -68 .....	17
11. Paid Hours of Qualified Occupational Therapists Employed in Reporting General and Allied Special Hospitals, by Province, 1961 -68 .....	18
12. Selected Paid Hours Ratios, General and Allied Special Hospitals, by Province, 1961 -68 .....	18
13. Average Number of Patients per Day, General and Allied Special Hospitals, by Province, 1961 -68 .....	20
14. Revenue Fund Expenditure per Patient-day, General and Allied Special Hospitals, by Province, 1961 -68 .....	20
15. Salary Cost per Patient-day, Total Hospital and Physiotherapy Department, General and Allied Special Hospitals, by Province, 1961 -68 .....	21
16. Selected Physiotherapy Department Cost Ratios, General and Allied Special Hospitals, by Province, 1964 -68 .....	21

### **SYMBOLS**

The following standard symbols are used in Dominion Bureau of Statistics publications:

- .. figures not available.
- ... figures not appropriate or not applicable.
- nil or zero.
- amount too small to be expressed.
- Ⓟ preliminary figures.
- Ⓡ revised figures.



## EXPLANATORY NOTES AND GLOSSARY

### Hospital

An institution which is operated for the medical, surgical and/or obstetrical care of in-patients, and which is licenced or approved as a hospital by the federal and/or a provincial government, or by a municipality duly authorized under the laws of the province. Specifically excluded are institutions primarily for tuberculosis, mental disease, and mental defect.

### Private Hospital

Recognized by the province as a "private hospital" which generally restricts its admissions to patients paying for the care provided at rates determined by the management.

### Public Hospital

Recognized by the province as a "public hospital" which is not operated for profit and accepts all patients regardless of ability to pay.

### Federal Hospital

A hospital owned and operated by the Government of Canada; operation will either be by the Department of National Health and Welfare, the Department of National Defence, or the Department of Veterans Affairs.

### General Hospital

A hospital which provides for the treatment and care of all types of diseases or at least a wide range of conditions.

### Allied Special Hospital

Includes chronic, convalescent, rehabilitation and "other" hospitals.

### Rated Bed Capacity

The number of beds that the hospital is designed to accommodate as at December 31 of the reporting year, on the basis of established standards of floor area per bed.

### Size of Hospital

The size of a hospital in this report is determined by the rated bed capacity on December 31 of the reporting year.

### Full-time Staff

Persons employed on a full-time basis at December 31, i.e., regularly employed throughout the full hospital workweek.

### Part-time Staff

Persons employed on a part-time basis at December 31, i.e., regularly employed on selected days or partial days in the hospital workweek.

### Staff Separation

The departure of an employee from employment within the hospital.

### Paid Hours

Accumulated during the year, paid hours include full-time and part-time regular employees of the hospital who have had salaries and wages payable to them by the hospital.

### Revenue Fund

The Revenue Fund is set up to record monetary activities associated with the day-to-day operations of the hospital in providing services to patients. It is sometimes called the Operating Fund.

**Revenue Fund Expense.**—Revenue Fund Expense is the cost, on an accrual basis, of operating and maintaining the hospital during the year, regardless of the amounts of disbursements made during the year.

**Salaries and Wages.**—Included are the gross salaries and wages earned during the year by all hospital personnel whether or not actually paid during the year. Gross salaries and wages comprise the following:

- (1) Salaries, wages and other remuneration earned by paid personnel, including special allowances paid and perquisites supplied to such personnel; includes also any earned fees or other remuneration perquisites, and special allowances to physicians or therapists for services rendered to the hospital.
- (2) The value of contributed services of regular staff members working without pay, and of perquisites supplied to such personnel, calculated on the basis of salary scales of similar services in the community and supported by regular payroll records.

### In-patients

Patients who are duly admitted to the hospital and to whom a bed or bassinets has been allocated. (This category excludes stillbirths as well as patients attending a day or night centre attached to the hospital).

**Adults and children.**—All in-patients except newborn.

**Admission.**—The formal acceptance and reception of a person as an in-patient (including newborn).

**Patient-day.**—The period of service to an in-patient between the census-taking hours on two successive days; the day of admission is counted as a patient-day but the day of separation is not.

### Population

June 1 population figures as enumerated in Census years or estimated for inter-censal years.

**Qualified Physiotherapists**

Physiotherapists who have graduated from a course of Physiotherapy from a recognized university; or who have qualifications approved by the Canadian Physiotherapy Association.

**Qualified Occupational Therapists**

Occupational therapists who have graduated from a course of Occupational Therapy from a recognized university; or who have qualifications approved by the Canadian Association of Occupational Therapists.

## INTRODUCTION

This report which deals with qualified physio- and occupational therapists is one in the Dominion Bureau of Statistics Institutions Section's occasional series of reports pertaining to health manpower in the hospital field<sup>1</sup> for the years 1961-68. In addition to these reports dealing with specific professional and technical groups the general publication *Health Manpower in Hospitals - General* (Catalogue No. 83-507) covers the total manpower of Canadian hospitals for the years 1961-68. Further information on the DBS Health Manpower series is contained in the preface of this volume.

Data contained in this publication have been combined to include both qualified physiotherapists and qualified occupational therapists. Both belong to the field of physical medicine and rehabilitation and for hospital accounting purposes are combined. However, separate data are maintained for personnel and other non-financial records. Data pertain to general and allied special hospitals and are arranged into the following areas: absolute counts of personnel, separations and paid hours, turnover rates and various ratios relating physiotherapy and occupational therapy productivity, personnel and costs to

over-all hospital activity. The data have been organized historically to bring out trends.

The number of hospitals reporting data for qualified physiotherapists and qualified occupational therapists has increased slowly. In 1961 the number of reporting hospitals was 193 (20.4 per cent of all operating general and allied hospitals), while in 1968 the absolute number reporting was 410 (32.3 per cent) (Table 1). From 1961 to 1968, most of the operating public general hospitals with 300 beds or more reported information relating to qualified physiotherapists and qualified occupational therapists. In the case of public general hospitals under 300 beds in size, the number reporting decreased in direct relationship to the size of the hospital. At the provincial level Ontario, Quebec and British Columbia have accounted for most of the hospitals reporting data on qualified physiotherapists and qualified occupational therapists, 71.3 per cent of the total number of hospitals reporting data during the years 1961-68. The proportion of reporting to operating hospitals in Quebec, Ontario and British Columbia combined has risen from 30.1 per cent in 1961 to 43.8 per cent in 1968.

## HIGHLIGHTS

### Qualified Physiotherapists

The total number of qualified physiotherapists<sup>2</sup> in reporting general and allied special hospitals in Canada has increased 125.0 per cent from 734 in 1961 to 1,658 in 1968 (Table 6). The number of physiotherapists per 100,000 population in Canada has doubled from 4.0 in 1961 to 8.0 in 1968 (Table 4). Most frequently during this period Prince Edward Island maintained the highest rate while Newfoundland had the lowest rate with 2.2 per 100,000 population in 1961 and 4.5 in 1968.

Of the total number of physiotherapists reported in general and allied special hospitals during the period 1961-68 approximately eighty-five per cent were employed on a full-time basis. However, hospitals reporting in the 25-49 bed size consistently had more part-time staff than full-time staff. The majority of physiotherapists are employed in Quebec and Ontario. Combined they accounted for approximately two thirds of reported full-time and part-time physiotherapists.

When the number of physiotherapists were expressed as a percentage of total hospital personnel its data indicate that from 1961 to 1968 the rate of full-time physiotherapists to total full-time hospital personnel has increased gradually from 0.34 per cent in 1961 to 0.54 per cent in 1968

(Table 2). Prince Edward Island maintained the highest rate of full-time physiotherapists to total full-time hospital personnel from 0.44 per cent in 1961 to 0.89 per cent in 1967 while British Columbia had the highest rate at 0.87 per cent in 1968. For Canada the percentage rate of part-time physiotherapists to total part-time hospital personnel is higher than the rate for full-time physiotherapists to total full-time hospital personnel except for the Prairies and British Columbia for the years 1965-68. The rate for full-time physiotherapists to total full-time hospital personnel for these years is generally higher than the percentage of part-time physiotherapists to total hospital personnel.

Turnover rates of full-time physiotherapists in Canadian general and allied special hospitals ranged from 51.4 per cent in 1962 to 40.4 per cent in 1968 (Table 5). However, since the counts of separations for the year 1962 include some unqualified physiotherapists, the turnover rates for 1962 are inflated; separations and consequently turnover rates for the remaining years relate to qualified physiotherapists. Thus, looking at the years 1963-68 the values of the turnover rates have decreased less significantly with a high of 47.5 per cent in 1963 and a low of 40.4 per cent in 1968. At the provincial level, Nova Scotia had the lowest rates of turnover for all years except 1962 (Saskatchewan) and 1964 (New Brunswick).

Paid hours reported for physiotherapists employed in general and allied special hospitals in Canada have increased by 81.04 per cent from 1,559,249 paid hours in 1961 to 2,822,789 paid hours in 1968 (Table 10).

<sup>1</sup> Unless otherwise specified, the hospital field refers to public, private and federal general and allied special hospitals.

<sup>2</sup> Hereinafter, referred to simply as "physiotherapists".

### Qualified Occupational Therapists

The total number of qualified occupational therapists<sup>3</sup> in reporting public general and allied special hospitals in Canada has increased 176.7 per cent from 150 in 1961 to 415 in 1968 (Table 7). The number of occupational therapists per 100,000 population in Canada has more than doubled from 0.8 in 1961 to 2.0 in 1968 (Table 4). For the years 1963-68 Manitoba evidenced the highest rate per 100,000 population while British Columbia and Ontario had the highest rates for 1961 and 1962 respectively. Newfoundland had the lowest number of occupational therapists per 100,000 population from 1961 to 1965 while New Brunswick had the lowest for the years 1966-68.

Approximately nine tenths of the total number of occupational therapists reported in general and allied special hospitals during the years 1961-68 were employed on a full-time basis. Public general hospitals with 500-999 beds reported more full-time occupational therapists than any other size group of hospitals. At the provincial level, Quebec and Ontario combined accounted for approximately 63.0 per cent of the reported full-time occupational therapists over the period 1961-68.

From 1961 to 1968 the percentage of full-time occupational therapists to total full-time hospital staff in Canadian general and allied special hospitals has doubled from 0.07 per cent in 1961 to 0.14 per cent in 1968 (Table 3). Manitoba possessed the highest percentage of occupational therapists to total full-time hospital personnel for the years 1963-68. British Columbia had the highest rate (0.13) for 1961 while Ontario and Prince Edward Island each had 0.11 per cent in 1962. New Brunswick had the low percentage rates for the years 1963 through 1968. This low rate was shared with Newfoundland and Saskatchewan in 1964 and with Prince Edward Island in 1965.

Turnover rates for full-time occupational therapists in Canadian general and allied special hospitals for the years 1962-68, ranged between a low of 26.4 per cent in 1963 and a high of 41.7 per cent in 1966 (Table 5). Since the counts of separations for the year 1962 include some unqualified occupational therapists the turnover rates for 1962 are inflated; separations and consequently, turnover rates for the remaining years relate to qualified occupational therapists only. Inspection of the table reveals that turnover rates vary greatly from year to year and from province to province. No discernable trends can be seen. This is due to the small numbers involved. Assessment of the impact of any particular turnover rate should include inspection of Tables 7 and 9 from which the rates were calculated.

Paid hours reported for occupational therapists employed in general and allied special hospitals in

<sup>3</sup> Hereinafter, referred to as "occupational therapists".

Canada have increased by 84.3 per cent from 365,946 paid hours in 1962 to 673,463 paid hours in 1968 (Table 11).

### Combined Data for Physiotherapists and Occupational Therapists<sup>4</sup>

Paid hours per 100 patient-days in the physiotherapy department as a whole climbed from 15.0 in 1964 to 20.8 in 1968 an increase of 38.7 per cent (Table 12). For total hospital personnel the ratio of paid hours per patient-day has advanced 17.2 per cent from 11.6 in 1961 to 13.6 in 1968. The ratio of paid hours in the physiotherapy department per 100 treatments in general and allied special hospitals has shown a decrease of 6.1 per cent from 62.4 paid hours in 1964 to 59.6 paid hours per 100 treatments in 1968.

Table 13 which represents the average number of patients (adults and children) in a given hospital on a given day is presented in each of these special reports as a form of back drop against which the reader may compare any trends in personnel movement against a measure of the change in patient load. The table shows that the average number of patients in all hospitals on a given day has increased by more than 12.0 per cent from 83.7 in 1961 to 94.1 in 1968, while in public general hospitals the increase was almost 16 per cent. Regionally, Nova Scotia and Newfoundland experienced the largest gains over the period with increases of 21.0 and 20.0 per cent respectively.

In reporting public general and allied special hospitals salary cost per patient-day in the physiotherapy department<sup>4</sup> increased 80.6 per cent from 31 cents in 1964 to 56 cents in 1968, while the total hospital salary cost per patient-day for the same period increased 60.3 per cent from \$18.82 in 1964 to \$30.16 in 1968 (Table 15). When the former was taken as a percentage of the latter, the resultant proportion was found to have increased from 1.6 in 1964 to 1.9 in 1968. Of the total Revenue Fund Expenditure per patient-day (Table 14), the ratio of physiotherapy department<sup>4</sup> salaries per patient-day represented a steadily increasing proportion going from 1.06 per cent in 1964 to 1.24 per cent in 1968. Physiotherapy department<sup>4</sup> salary cost per patient-day was highest in the largest public general hospitals.

Physiotherapy department<sup>4</sup> salary cost per treatment advanced 25.2 per cent from \$1.31 in 1964 to \$1.64 in 1968 (Table 16). When this ratio was expressed as a percentage of physiotherapy department<sup>4</sup> direct cost per treatment for the period 1964-68, the ratio increased from 92.9 per cent in 1964 to 93.7 per cent in 1968.

<sup>4</sup> For the years 1961-68, financial data for physiotherapists and occupational therapists have been combined under the same departmental costs. Both belong to the field of physical medicine and rehabilitation.

TABLE 1. Hospitals<sup>1</sup> Operating and Reporting,<sup>2</sup> by Province, 1961-68

Province	1961 <sup>3</sup>		1962 <sup>3</sup>		1963		1964	
	Operating	Reporting	Operating	Reporting	Operating	Reporting	Operating	Reporting
<b>Canada</b>								
Public general by bed size .....	856	139	832	196	838	210	845	211
1- 9 beds .....	73	—	49	—	48	—	37	—
10- 24 " .....	219	—	208	—	203	1	202	—
25- 49 " .....	196	2	189	7	190	7	194	11
50- 99 " .....	130	10	133	23	138	27	140	24
100-199 " .....	121	40	126	63	127	62	131	61
200-299 " .....	45	26	49	32	49	36	55	36
300-499 " .....	40	31	45	39	45	40	48	42
500-999 " .....	26	24	26	25	31	30	31	30
1,000+ " .....	6	6	7	7	7	7	7	7
<b>All hospitals</b>								
Canada .....	946	193	1,250	261	1,250	284	1,269	297
Newfoundland .....	41	3	43	2	44	3	46	2
Prince Edward Island .....	9	3	9	5	9	5	9	5
Nova Scotia .....	47	8	53	10	52	10	51	11
New Brunswick .....	39	7	40	9	40	9	39	11
Quebec .....	146	29	260	36	262	39	266	43
Ontario .....	211	87	319	116	312	128	317	130
Manitoba .....	78	9	102	9	101	13	102	11
Saskatchewan .....	154	11	159	19	157	19	155	23
Alberta .....	116	15	126	21	131	24	141	24
British Columbia .....	99	21	110	32	111	32	112	36
Yukon .....	2	—	5	1	5	1	5	—
Northwest Territories .....	4	—	24	1	26	1	26	1
<b>1965</b>								
<b>1966</b>								
<b>1967</b>								
<b>1968</b>								
	Operating	Reporting	Operating	Reporting	Operating	Reporting	Operating	Reporting
<b>Canada</b>								
Public general by bed size .....	852	237	869	274	874	298	881	316
1- 9 beds .....	36	—	33	—	32	—	32	—
10- 24 " .....	203	1	204	3	206	4	200	3
25- 49 " .....	192	12	197	12	196	12	201	14
50- 99 " .....	144	34	149	47	147	52	145	57
100-199 " .....	130	67	128	75	128	80	130	84
200-299 " .....	58	41	63	47	67	55	70	56
300-499 " .....	51	45	56	52	59	56	58	57
500-999 " .....	30	29	30	30	30	30	37	37
1,000+ " .....	8	8	9	8	9	9	8	8
<b>All hospitals</b>								
Canada .....	1,283	327	1,273	362	1,277	389	1,269	410
Newfoundland .....	47	3	47	8	47	9	47	10
Prince Edward Island .....	9	4	9	4	9	3	9	4
Nova Scotia .....	51	13	50	16	50	21	50	19
New Brunswick .....	40	11	40	10	41	12	41	13
Quebec .....	273	54	264	62	269	65	266	75
Ontario .....	315	147	309	154	306	161	299	170
Manitoba .....	102	11	99	13	99	12	100	11
Saskatchewan .....	155	21	154	23	154	20	153	22
Alberta .....	141	24	151	28	150	33	153	30
British Columbia .....	119	38	116	44	118	53	117	54
Yukon .....	5	—	5	—	5	—	5	—
Northwest Territories .....	26	1	29	—	29	—	29	2

<sup>1</sup> Public, private and federal.

<sup>2</sup> Based upon the number of hospitals which reported paid hours for qualified physiotherapists and occupational therapists.

<sup>3</sup> Hospitals reporting paid hours for unqualified as well as qualified personnel.

**TABLE 2. Qualified Physiotherapists Employed<sup>1</sup> as a Percentage of Total Hospital Personnel,<sup>2</sup> General and Allied Special Hospitals, by Province, 1961-68**

Province	1961 <sup>3</sup>		1962 <sup>3</sup>		1963		1964	
	Full-time	Part-time	Full-time	Part-time	Full-time	Part-time	Full-time	Part-time
	per cent							
Canada .....	0.34	0.45	0.34	0.43	0.39	0.50	0.40	0.60
Newfoundland .....	0.29	0.68	0.31	—	0.31	—	0.27	—
Prince Edward Island .....	0.44	1.58	1.21	2.08	1.06	1.47	1.06	1.38
Nova Scotia .....	0.27	1.52	0.24	0.68	0.29	1.37	0.27	0.96
New Brunswick .....	0.31	0.36	0.28	0.51	0.31	0.50	0.29	0.51
Quebec .....	0.26	0.21	0.27	0.13	0.29	0.22	0.30	0.37
Ontario .....	0.38	0.52	0.41	0.57	0.45	0.61	0.49	0.66
Manitoba .....	0.28	0.20	0.24	0.06	0.38	0.24	0.36	0.59
Saskatchewan .....	0.32	1.11	0.28	0.40	0.25	0.63	0.27	0.50
Alberta .....	0.42	0.51	0.31	0.36	0.44	0.31	0.44	0.38
British Columbia .....	0.51	0.28	0.44	0.51	0.60	0.35	0.63	1.02
Yukon .....	—	—	—	2.70	—	3.84	—	—
Northwest Territories .....	—	3.57	—	1.31	—	2.22	—	—
	1965		1966		1967		1968	
	Full-time	Part-time	Full-time	Part-time	Full-time	Part-time	Full-time	Part-time
	per cent							
Canada .....	0.44	0.64	0.47	0.62	0.53	0.56	0.54	0.58
Newfoundland .....	0.31	0.61	0.39	0.91	0.35	0.97	0.32	0.98
Prince Edward Island .....	1.15	—	1.01	—	0.89	—	0.80	—
Nova Scotia .....	0.46	0.35	0.49	0.66	0.57	0.79	0.47	0.86
New Brunswick .....	0.26	0.39	0.18	0.51	0.32	0.31	0.36	0.39
Quebec .....	0.30	0.64	0.35	0.38	0.38	0.21	0.36	0.36
Ontario .....	0.54	0.78	0.55	0.77	0.60	0.75	0.63	0.81
Manitoba .....	0.42	0.38	0.44	0.35	0.48	0.30	0.50	0.23
Saskatchewan .....	0.30	0.31	0.34	0.07	0.52	0.05	0.61	0.26
Alberta .....	0.51	0.29	0.56	0.81	0.68	0.63	0.67	0.46
British Columbia .....	0.68	0.72	0.79	0.90	0.81	1.11	0.87	0.60
Yukon .....	—	—	—	—	—	—	—	—
Northwest Territories .....	—	1.44	—	—	—	—	—	2.66

<sup>1</sup> Reported data.

<sup>2</sup> Estimated data.

<sup>3</sup> Hospitals reporting unqualified as well as qualified personnel.

**TABLE 3. Qualified Occupational Therapists Employed<sup>1</sup> as a Percentage of Total Hospital Personnel,<sup>2</sup> General and Allied Special Hospitals, by Province, 1961-68**

Province	1961 <sup>3</sup>		1962 <sup>3</sup>		1963		1964	
	Full-time	Part-time	Full-time	Part-time	Full-time	Part-time	Full-time	Part-time
	per cent							
Canada .....	0.07	0.06	0.07	0.07	0.10	0.10	0.10	0.12
Newfoundland .....	0.07	—	0.03	—	0.06	—	0.05	—
Prince Edward Island .....	—	—	0.11	—	0.11	—	0.11	—
Nova Scotia .....	0.08	0.19	0.06	0.11	0.08	—	0.11	—
New Brunswick .....	0.06	—	0.06	—	0.05	—	0.05	—
Quebec .....	0.06	0.02	0.05	0.07	0.07	0.07	0.07	0.12
Ontario .....	0.08	0.07	0.11	0.07	0.12	0.10	0.12	0.12
Manitoba .....	0.09	0.07	0.04	0.07	0.16	0.25	0.20	0.24
Saskatchewan .....	0.05	0.01	0.06	—	0.08	—	0.05	—
Alberta .....	0.07	—	0.05	0.18	0.08	0.23	0.09	0.26
British Columbia .....	0.13	0.06	0.07	0.06	0.13	0.12	0.12	0.05
Yukon .....	—	—	—	—	—	—	—	—
Northwest Territories .....	—	—	—	—	—	—	—	—

See footnote(s) at end of table.

**TABLE 3. Qualified Occupational Therapists Employed<sup>1</sup> as a Percentage of Total Hospital Personnel,<sup>2</sup> General and Allied Special Hospitals, by Province, 1961-68 - Concluded**

Province	1965		1966		1967		1968	
	Full-time	Part-time	Full-time	Part-time	Full-time	Part-time	Full-time	Part-time
	per cent							
Canada .....	0.11	0.12	0.10	0.08	0.13	0.14	0.14	0.14
Newfoundland .....	0.04	—	0.10	—	0.07	0.33	0.10	0.33
Prince Edward Island .....	0.19	1.19	0.18	—	0.09	—	0.09	—
Nova Scotia .....	0.14	—	0.09	0.10	0.12	—	0.05	0.16
New Brunswick .....	0.04	—	0.05	—	0.04	—	—	0.13
Quebec .....	0.07	0.12	0.08	0.08	0.09	0.07	0.10	0.08
Ontario .....	0.12	0.13	0.16	0.08	0.15	0.17	0.16	0.16
Manitoba .....	0.21	0.19	0.18	0.13	0.19	0.08	0.22	0.15
Saskatchewan .....	0.08	—	0.07	—	0.12	0.06	0.09	0.16
Alberta .....	0.12	0.30	0.15	0.05	0.16	0.21	0.20	0.21
British Columbia .....	0.14	0.05	0.18	0.04	0.15	0.30	0.16	0.21
Yukon .....	—	—	—	—	—	—	—	—
Northwest Territories .....	—	—	—	—	—	—	—	—

<sup>1</sup> Reported data.  
<sup>2</sup> Estimated data.  
<sup>3</sup> Hospitals reporting unqualified as well as qualified occupational therapists.

**TABLE 4. Qualified Physio-Occupational Therapists Employed<sup>1</sup> by General and Allied Special Hospitals per 100,000 Population,<sup>2</sup> by Province 1961-68**

Province	1961 <sup>3</sup>	1962 <sup>3</sup>	1963	1964	1965	1966	1967	1968
		Physiotherapists						
Canada .....	4.0	4.1	4.9	5.4	6.1	6.8	7.7	8.0
Newfoundland .....	2.2	2.1	2.3	2.5	3.1	4.5	4.8	4.5
Prince Edward Island .....	4.8	11.2	10.2	10.1	11.0	10.1	9.2	8.2
Nova Scotia .....	3.9	3.5	4.3	3.8	5.7	6.7	8.5	7.4
New Brunswick .....	3.8	3.6	4.1	4.1	3.6	2.8	4.5	5.3
Quebec .....	2.8	2.9	3.4	3.9	4.5	5.0	5.5	5.5
Ontario .....	4.8	5.6	6.3	6.9	7.9	8.3	9.1	9.8
Manitoba .....	3.6	3.0	5.0	5.2	5.8	6.2	6.9	7.1
Saskatchewan .....	4.4	3.5	3.5	3.8	4.0	4.2	6.2	7.5
Alberta .....	4.7	3.6	5.1	5.5	6.3	8.3	10.2	10.2
British Columbia .....	5.0	4.7	6.1	7.1	7.5	8.8	9.8	9.8
Yukon .....	—	6.7	6.7	—	—	—	—	—
Northwest Territories .....	—	4.0	3.8	3.7	3.7	—	—	6.5
	Occupational therapists							
Canada .....	0.8	0.9	1.2	1.3	1.4	1.4	1.8	2.0
Newfoundland .....	0.4	0.2	0.4	0.4	0.4	1.0	1.0	1.4
Prince Edward Island .....	—	0.9	0.9	0.9	2.8	1.8	0.9	0.9
Nova Scotia .....	0.9	0.8	0.9	1.2	1.6	1.2	1.5	0.9
New Brunswick .....	0.7	0.7	0.7	0.7	0.5	0.6	0.5	0.2
Quebec .....	0.6	0.6	0.8	1.0	1.0	1.1	1.3	1.6
Ontario .....	1.0	1.3	1.5	1.6	1.7	1.6	2.2	2.5
Manitoba .....	1.1	0.5	2.3	2.7	2.9	2.5	2.6	3.2
Saskatchewan .....	0.6	0.6	1.0	0.6	0.9	0.8	1.5	1.4
Alberta .....	0.7	0.7	1.1	1.3	1.7	1.9	2.6	3.0
British Columbia .....	1.3	0.7	1.4	1.1	1.4	1.8	2.0	1.9
Yukon .....	—	—	—	—	—	—	—	—
Northwest Territories .....	—	—	—	—	—	—	—	—

<sup>1</sup> Reported data, full-time and part-time.  
<sup>2</sup> Estimated data.  
<sup>3</sup> Hospitals reporting unqualified as well as qualified personnel.

Source: *Estimated Population of Canada by Province at June 1, 1969*. Catalogue No. 91-201, Research Section, Census Division, DBS.

**TABLE 5. Turnover Rates<sup>1</sup> of Full-time Qualified Physio-Occupational Therapists, General and Allied Special Hospitals, by Province, 1962 - 68**

Province	Physiotherapists							Occupational therapists						
	1962 <sup>2</sup>	1963	1964	1965	1966	1967	1968	1962 <sup>2</sup>	1963	1964	1965	1966	1967	1968
	per cent													
<b>Canada</b>														
Public general by bed size .....	51.0	50.2	51.2	49.0	41.1	43.3	40.7	35.7	25.6	42.8	29.2	43.1	47.0	36.7
1- 9 beds .....	—	—	—	—	—	—	—	—	—	—	—	—	—	—
10- 24 " .....	—	—	—	—	—	—	—	—	—	—	—	—	—	—
25- 49 " .....	0.0	50.0	25.0	16.7	36.4	25.0	28.6	—	—	—	—	—	—	—
50- 99 " .....	41.7	34.5	53.3	18.8	16.0	36.9	37.8	100.0	0.0	66.7	150.0	0.0	0.0	50.0
100-199 " .....	37.9	30.9	34.4	41.2	35.9	36.3	28.9	0.0	0.0	40.0	0.0	20.0	66.7	25.0
200-299 " .....	38.6	41.3	41.9	34.3	41.4	38.6	44.7	40.0	33.3	14.3	11.1	28.6	40.0	0.0
300-499 " .....	45.8	51.2	55.0	47.2	32.7	46.0	32.6	50.0	15.8	48.8	0.0	17.9	46.9	28.3
500-999 " .....	58.0	56.0	50.9	49.7	49.8	45.1	50.0	16.1	28.2	39.0	34.2	48.2	54.0	35.7
1,000+ " .....	60.9	57.5	63.8	68.9	46.2	44.7	39.5	40.0	30.2	49.2	42.7	62.8	41.6	55.6
<b>All hospitals</b>														
<b>Canada</b> .....	51.4	47.5	47.5	44.7	40.4	44.4	40.4	40.1	26.4	35.8	27.4	41.7	40.8	37.7
Newfoundland .....	0.0	66.7	43.5	30.8	64.7	34.1	43.9	66.7	0.0	50.0	50.0	57.1	44.4	40.0
Prince Edward Island .....	0.0	0.0	0.0	0.0	8.7	0.0	0.0	0.0	0.0	0.0	0.0	0.0	0.0	0.0
Nova Scotia .....	53.7	22.7	25.5	12.7	11.4	24.5	30.3	90.9	0.0	37.5	9.5	20.0	0.0	62.5
New Brunswick .....	43.9	27.9	22.2	23.8	29.4	35.0	60.7	0.0	25.0	0.0	0.0	28.6	57.1	200.0
Quebec .....	35.9	44.6	56.5	49.8	41.6	36.7	40.5	30.5	27.8	44.4	18.2	34.2	40.9	41.0
Ontario .....	55.4	52.5	44.8	42.7	41.0	50.9	43.8	42.7	20.9	36.2	24.6	44.6	46.9	37.5
Manitoba .....	80.7	71.4	45.8	50.0	46.0	45.5	36.4	15.4	27.3	20.0	30.4	80.0	36.4	36.0
Saskatchewan .....	28.6	45.6	38.6	56.3	35.6	49.5	30.4	18.2	26.7	26.7	53.3	35.3	47.6	26.1
Alberta .....	86.3	57.1	51.4	68.8	55.2	49.4	36.4	25.0	52.6	37.0	45.7	38.3	40.7	27.0
British Columbia .....	55.2	33.7	56.7	38.6	35.0	43.4	38.8	64.5	48.5	35.0	46.5	31.6	31.7	35.5
Yukon .....	—	—	—	—	—	—	—	—	—	—	—	—	—	—
Northwest Territories .....	—	—	—	—	—	—	—	—	—	—	—	—	—	—

<sup>1</sup> The turnover rate is an average measure which expresses the number of personnel who leave as a percentage of the average number of persons employed. In 1968, for example, the formula for calculation is  $\frac{\text{Number of separations (1968)}}{\text{Number of employees (1967 + 1968)}} \times 100$ .

<sup>2</sup> For 1962, data for turnover rates include unqualified as well as qualified personnel.

**TABLE 6. Qualified Physiotherapists Employed Full-time and Part-time in Reporting General and Allied Special Hospitals,<sup>1</sup> by Province, 1961 - 68**

Province	1961 <sup>2</sup>		1962 <sup>2</sup>		1963		1964	
	Full-time	Part-time	Full-time	Part-time	Full-time	Part-time	Full-time	Part-time
<b>Canada</b>								
Public general by bed size .....	488	59	516	67	568	80	634	98
1- 9 beds .....	—	—	—	—	—	—	—	—
10- 24 " .....	—	—	—	—	—	1	—	—
25- 49 " .....	2	4	2	4	2	5	6	7
50- 99 " .....	12	12	12	9	17	13	13	12
100-199 " .....	61	16	55	22	68	23	60	21
200-299 " .....	54	10	60	17	66	9	63	12
300-499 " .....	96	8	105	9	110	16	148	30
500-999 " .....	174	8	174	5	201	8	235	14
1,000+ " .....	89	1	108	1	104	5	109	2
<b>All hospitals</b>								
<b>Canada</b> .....	644	90	674	96	816	112	891	151
Newfoundland .....	9	1	10	—	11	—	12	—
Prince Edward Island .....	4	1	11	1	10	1	10	1
Nova Scotia .....	21	8	20	6	24	8	23	6
New Brunswick .....	21	2	20	2	23	2	22	3
Quebec .....	139	10	151	6	176	10	196	19
Ontario .....	254	46	291	62	338	69	381	79
Manitoba .....	30	3	27	1	43	4	40	10
Saskatchewan .....	33	8	30	3	27	6	30	6
Alberta .....	57	5	45	4	67	4	73	6
British Columbia .....	76	5	69	9	97	6	104	20
Yukon .....	—	—	—	1	—	1	—	—
Northwest Territories .....	—	1	—	1	—	1	—	1

See footnote(s) at end of table.



**TABLE 6. Qualified Physiotherapists Employed Full-time and Part-time in Reporting General and Allied Special Hospitals,<sup>1</sup> by Province, 1961-68 - Concluded**

Province	1965		1966		1967		1968	
	Full-time	Part-time	Full-time	Part-time	Full-time	Part-time	Full-time	Part-time
<b>Canada</b>								
Public general by bed size .....	726	119	845	132	1,020	138	1,077	157
1- 9 beds .....	-	-	-	-	-	-	-	-
10- 24 " .....	-	1	-	3	-	4	-	3
25- 49 " .....	6	7	5	8	3	8	4	10
50- 99 " .....	19	17	31	18	34	23	40	21
100-199 " .....	71	19	74	30	97	28	104	20
200-299 " .....	77	13	97	13	126	24	147	21
300-499 " .....	191	34	237	38	289	29	257	38
500-999 " .....	236	19	250	14	304	11	383	39
1,000+ .....	126	9	151	8	167	11	142	5
<b>All hospitals</b>								
Canada .....	1,030	177	1,156	199	1,358	207	1,430	228
Newfoundland .....	14	1	20	2	21	3	20	3
Prince Edward Island .....	12	-	11	-	10	-	9	-
Nova Scotia .....	40	3	44	7	54	10	45	11
New Brunswick .....	20	2	14	3	26	2	30	3
Quebec .....	218	37	263	28	303	19	290	37
Ontario .....	438	100	464	112	534	116	585	129
Manitoba .....	48	8	52	8	58	8	63	6
Saskatchewan .....	34	4	39	1	58	1	67	5
Alberta .....	87	5	105	17	134	18	141	15
British Columbia .....	119	16	144	21	160	30	180	17
Yukon .....	-	-	-	-	-	-	-	-
Northwest Territories .....	-	1	-	-	-	-	-	2

<sup>1</sup> Public, private and federal.

<sup>2</sup> For the years 1961 and 1962 data include unqualified as well as qualified physiotherapists.

**TABLE 7. Qualified Occupational Therapists Employed Full-time and Part-time in Reporting General and Allied Special Hospitals,<sup>1</sup> by Province, 1961-68**

Province	1961 <sup>2</sup>		1962 <sup>2</sup>		1963		1964	
	Full-time	Part-time	Full-time	Part-time	Full-time	Part-time	Full-time	Part-time
<b>Canada</b>								
Public general by bed size .....	72	5	85	4	95	10	106	15
1- 9 beds .....	-	-	-	-	-	-	-	-
10- 24 " .....	-	-	-	-	-	-	-	-
25- 49 " .....	-	-	-	-	-	-	-	-
50- 99 " .....	1	-	1	-	1	-	2	-
100-199 " .....	-	1	2	-	2	-	3	1
200-299 " .....	4	-	6	1	6	4	8	2
300-499 " .....	17	2	19	1	19	4	22	6
500-999 " .....	30	2	32	2	39	1	38	5
1,000+ .....	20	-	25	-	28	1	33	1
<b>All hospitals</b>								
Canada .....	139	11	145	16	203	23	216	29
Newfoundland .....	2	-	1	-	2	-	2	-
Prince Edward Island .....	-	-	1	-	1	-	1	-
Nova Scotia .....	6	1	5	1	7	-	9	-
New Brunswick .....	4	-	4	-	4	-	4	-
Quebec .....	29	1	30	3	42	3	48	6
Ontario .....	55	6	76	8	87	11	90	14
Manitoba .....	9	1	4	1	18	4	22	4
Saskatchewan .....	5	1	6	-	9	-	6	-
Alberta .....	9	-	7	2	12	3	15	4
British Columbia .....	20	1	11	1	21	2	19	1
Yukon .....	-	-	-	-	-	-	-	-
Northwest Territories .....	-	-	-	-	-	-	-	-

See footnote(s) at end of table.

**TABLE 7. Qualified Occupational Therapists Employed Full-time and Part-time in Reporting General and Allied Special Hospitals,<sup>1</sup> by Province, 1961-68 - Concluded**

Province	1965		1966		1967		1968	
	Full-time	Part-time	Full-time	Part-time	Full-time	Part-time	Full-time	Part-time
<b>Canada</b>								
Public general by bed size .....	120	14	140	12	175	28	212	27
1- 9 beds .....	—	—	—	—	—	—	—	—
10- 24 " .....	—	—	—	—	—	—	—	—
25- 49 " .....	—	—	—	—	—	—	—	—
50- 99 " .....	2	—	2	—	2	3	2	3
100-199 " .....	5	—	5	—	4	—	4	1
200-299 " .....	10	1	11	1	9	7	19	6
300-499 " .....	23	6	33	4	48	8	51	8
500-999 " .....	38	2	45	1	55	7	85	6
1,000+ " .....	42	5	44	6	57	3	51	3
<b>All hospitals</b>								
<b>Canada</b> .....	<b>244</b>	<b>34</b>	<b>264</b>	<b>24</b>	<b>319</b>	<b>50</b>	<b>360</b>	<b>55</b>
Newfoundland .....	2	—	5	—	4	1	6	1
Prince Edward Island .....	2	1	2	—	1	—	1	—
Nova Scotia .....	12	—	8	1	11	—	5	2
New Brunswick .....	3	—	4	—	3	—	—	1
Quebec .....	51	7	60	6	72	6	84	8
Ontario .....	97	16	96	12	130	26	153	26
Manitoba .....	24	4	21	3	23	2	27	4
Saskatchewan .....	9	—	8	—	13	1	10	3
Alberta .....	20	5	27	1	32	6	42	4
British Columbia .....	24	1	33	1	30	8	32	6
Yukon .....	—	—	—	—	—	—	—	—
Northwest Territories .....	—	—	—	—	—	—	—	—

<sup>1</sup> Public, private and federal.

<sup>2</sup> For the years 1961 and 1962, data include unqualified as well as qualified occupational therapists.

**TABLE 8. Separations of Qualified Physiotherapists Employed Full-time from Reporting General and Allied Special Hospitals,<sup>1</sup> by Province, 1961-68**

Province	1961 <sup>2</sup>	1962 <sup>2</sup>	1963	1964	1965	1966	1967	1968
<b>Canada</b>								
Public general by bed size .....	234	256	272	308	333	323	404	427
1- 9 beds .....	—	—	—	—	—	—	—	—
10- 24 " .....	—	—	—	—	—	—	—	—
25- 49 " .....	1	—	1	1	1	2	1	1
50- 99 " .....	2	5	5	8	3	4	12	14
100-199 " .....	18	22	19	22	27	26	31	29
200-299 " .....	21	22	26	27	24	36	43	61
300-499 " .....	53	46	55	71	80	70	121	89
500-999 " .....	82	101	105	111	117	121	125	172
1,000+ " .....	57	60	61	68	81	64	71	61
<b>All hospitals</b>								
<b>Canada</b> .....	<b>294</b>	<b>339</b>	<b>354</b>	<b>405</b>	<b>429</b>	<b>442</b>	<b>558</b>	<b>563</b>
Newfoundland .....	3	—	7	5	4	11	7	9
Prince Edward Island .....	—	—	—	—	—	1	—	—
Nova Scotia .....	5	11	5	6	4	5	12	15
New Brunswick .....	7	9	6	5	5	5	7	17
Quebec .....	64	52	73	105	103	100	104	120
Ontario .....	115	151	165	161	175	185	254	245
Manitoba .....	18	23	25	19	22	23	25	22
Saskatchewan .....	12	9	13	11	18	13	24	19
Alberta .....	26	44	32	36	55	53	59	50
British Columbia .....	43	40	28	57	43	46	66	66
Yukon .....	1	—	—	—	—	—	—	—
Northwest Territories .....	—	—	—	—	—	—	—	—

<sup>1</sup> Public, private and federal.

<sup>2</sup> For the years 1961 and 1962, data for separations include unqualified as well as qualified physiotherapists.

**TABLE 9. Separations of Qualified Occupational Therapists Employed Full-time from Reporting General and Allied Special Hospitals,<sup>1</sup> by Province, 1961-68**

Province	1961 <sup>2</sup>	1962 <sup>2</sup>	1963	1964	1965	1966	1967	1968
<b>Canada</b>								
Public general by bed size .....	31	28	23	43	33	56	74	71
1- 9 beds .....	—	—	—	—	—	—	—	—
10- 24 " .....	—	—	—	—	—	—	—	—
25- 49 " .....	—	—	—	—	—	—	—	—
50- 99 " .....	—	1	—	1	3	—	—	1
100-199 " .....	1	—	—	1	—	1	3	1
200-299 " .....	2	2	2	1	1	3	4	—
300-499 " .....	6	9	3	10	—	5	19	14
500-999 " .....	12	5	10	15	13	20	27	25
1,000+ " .....	10	11	8	15	16	27	21	30
<b>All hospitals</b>								
Canada .....	62	57	46	75	63	106	119	128
Newfoundland .....	1	1	—	1	1	2	2	2
Prince Edward Island .....	—	—	—	—	—	—	—	—
Nova Scotia .....	1	5	—	3	1	2	—	5
New Brunswick .....	3	—	1	1	—	1	2	3
Quebec .....	9	9	10	20	9	19	27	32
Ontario .....	32	28	17	32	23	43	53	53
Manitoba .....	3	1	3	4	7	18	8	9
Saskatchewan .....	3	1	2	2	4	3	5	3
Alberta .....	5	2	5	5	8	9	12	10
British Columbia .....	5	10	8	7	10	9	10	11
Yukon .....	—	—	—	—	—	—	—	—
Northwest Territories .....	—	—	—	—	—	—	—	—

<sup>1</sup> Public, private and federal.

<sup>2</sup> For the years 1961 and 1962, data for separations include unqualified as well as qualified occupational therapists.

**TABLE 10. Paid Hours of Qualified Physiotherapists Employed<sup>1</sup> in Reporting General and Allied Special Hospitals,<sup>2</sup> by Province, 1962-68**

Province	1962 <sup>3</sup>	1963	1964	1965	1966	1967	1968
<b>Canada</b>							
Public general by bed size .....	1,183,710	1,149,822	1,269,756	1,454,406	1,647,047	1,926,384	2,201,771
1- 9 beds .....	—	—	—	—	—	—	—
10- 24 " .....	—	68	—	156	437	928	1,317
25- 49 " .....	9,064	6,788	11,973	16,491	11,817	10,950	15,202
50- 99 " .....	38,834	34,001	30,447	47,296	57,599	73,748	93,049
100-199 " .....	139,534	144,633	139,527	154,922	167,152	186,126	218,872
200-299 " .....	154,412	127,575	137,415	155,496	193,753	241,688	304,737
300-499 " .....	253,396	231,351	295,556	366,333	457,188	540,660	515,281
500-999 " .....	357,115	391,578	438,387	454,440	472,867	546,373	744,439
1,000+ " .....	231,355	213,828	216,451	259,272	286,234	325,911	308,874
<b>All hospitals</b>							
Canada .....	1,559,249	1,566,904	1,722,953	1,964,643	2,212,827	2,538,007	2,822,789
Newfoundland .....	19,187	13,928	9,688	18,883	25,992	36,986	39,027
Prince Edward Island .....	24,128	22,048	21,101	20,530	24,440	17,940	18,070
Nova Scotia .....	45,514	51,224	44,622	53,814	82,703	109,350	96,121
New Brunswick .....	42,990	42,723	48,557	43,458	39,790	49,631	61,370
Quebec .....	312,582	318,103	345,573	399,315	454,549	507,385	530,462
Ontario .....	677,289	673,866	764,844	876,240	946,007	1,041,792	1,179,525
Manitoba .....	71,552	87,651	91,658	87,654	112,750	113,191	124,662
Saskatchewan .....	76,802	62,200	69,001	72,984	80,256	98,995	122,780
Alberta .....	131,295	125,627	131,285	176,229	193,844	258,270	290,511
British Columbia .....	156,566	167,963	195,860	215,069	252,496	304,467	359,691
Yukon .....	912	896	—	—	—	—	—
Northwest Territories .....	432	675	764	467	—	—	570

<sup>1</sup> Full-time and part-time.

<sup>2</sup> Public, private and federal.

<sup>3</sup> For 1962, data for paid hours include unqualified as well as qualified physiotherapists.

**TABLE 11. Paid Hours of Qualified Occupational Therapists Employed<sup>1</sup> in Reporting General and Allied Special Hospitals,<sup>2</sup> by Province, 1962-68**

Province	1962 <sup>3</sup>	1963	1964	1965	1966	1967	1968
<b>Canada</b>							
Public general by bed size .....	206,382	183,658	217,385	246,124	285,709	349,985	398,924
1- 9 beds .....	—	—	—	—	—	—	—
10- 24 " .....	—	—	—	—	—	—	—
25- 49 " .....	—	—	—	—	—	—	—
50- 99 " .....	2,706	2,000	4,240	5,976	3,335	4,998	5,838
100-199 " .....	2,688	3,096	7,462	10,894	8,516	7,698	4,322
200-299 " .....	13,995	11,798	12,309	18,695	22,529	23,317	33,627
300-499 " .....	49,664	38,030	48,205	48,126	64,231	102,539	98,020
500-999 " .....	77,846	74,612	82,905	76,604	91,582	103,928	157,658
1,000+ " .....	59,483	54,122	62,264	85,829	95,516	107,505	99,459
<b>All hospitals</b>							
<b>Canada</b> .....	<b>365,946</b>	<b>347,179</b>	<b>398,460</b>	<b>458,455</b>	<b>499,453</b>	<b>594,639</b>	<b>673,463</b>
Newfoundland .....	2,080	—	2,288	2,288	3,370	4,385	9,250
Prince Edward Island .....	2,080	2,080	1,950	2,750	3,900	1,950	1,950
Nova Scotia .....	12,995	13,755	16,680	23,754	18,460	20,458	13,797
New Brunswick .....	9,702	6,990	6,312	5,704	5,932	5,574	4,260
Quebec .....	66,399	69,484	80,781	85,133	92,296	117,765	127,409
Ontario .....	174,178	163,430	181,307	193,106	203,314	249,575	292,717
Manitoba .....	20,112	27,993	37,046	40,407	47,236	46,139	49,666
Saskatchewan .....	15,231	14,243	13,096	18,592	22,016	26,341	26,081
Alberta .....	30,381	18,936	27,310	41,967	48,627	62,904	83,419
British Columbia .....	32,788	30,268	31,690	44,754	54,302	59,548	64,914
Yukon .....	—	—	—	—	—	—	—
Northwest Territories .....	—	—	—	—	—	—	—

<sup>1</sup> Full-time and part-time.

<sup>2</sup> Public, private and federal.

<sup>3</sup> For 1962, data for paid hours include unqualified as well as qualified occupational therapists.

**TABLE 12. Selected Paid Hours Ratios, General and Allied Special Hospitals,<sup>1</sup> by Province, 1962-68**

Province	Paid hours, total hospital personnel per rated bed						
	1962	1963	1964	1965	1966	1967	1968
<b>Canada</b>							
Public general by bed size .....	3,873.1	3,959.2	4,032.0	4,143.8	4,230.0	4,299.0	4,400.5
1- 9 beds .....	3,121.3	3,101.0	3,272.3	3,462.5	3,408.4	3,370.8	3,092.3
10- 24 " .....	2,440.4	2,475.3	2,467.0	2,519.6	2,556.4	2,587.2	2,643.7
25- 49 " .....	2,585.0	2,624.3	2,609.6	2,595.0	2,648.6	2,667.8	2,725.1
50- 99 " .....	2,927.2	3,059.6	3,053.6	3,125.9	3,156.3	3,197.7	3,302.6
100-199 " .....	3,596.5	3,640.3	3,666.4	3,759.8	3,753.1	3,797.9	3,781.6
200-299 " .....	3,906.4	3,973.8	3,890.4	4,055.4	4,135.7	4,111.6	4,211.9
300-499 " .....	4,188.4	4,238.4	4,354.8	4,429.2	4,499.6	4,621.3	4,643.9
500-999 " .....	4,508.2	4,656.4	4,878.6	5,089.9	5,265.7	5,434.5	5,456.8
1,000+ " .....	4,823.3	4,832.3	5,060.3	5,046.4	5,232.9	5,086.6	5,482.0
<b>All hospitals</b>							
<b>Canada</b> .....	<b>3,538.1</b>	<b>3,576.6</b>	<b>3,656.9</b>	<b>3,777.9</b>	<b>3,864.6</b>	<b>3,941.6</b>	<b>4,039.3</b>
Newfoundland .....	4,231.4	4,008.6	3,773.1	3,734.4	3,570.6	3,866.9	4,370.7
Prince Edward Island .....	2,901.8	2,954.6	3,021.8	2,997.3	3,146.8	3,212.2	3,226.4
Nova Scotia .....	3,695.5	3,870.6	3,871.3	3,824.8	3,899.4	4,246.1	4,241.5
New Brunswick .....	3,917.4	4,027.7	4,027.5	4,150.8	4,214.2	4,257.3	4,263.3
Quebec .....	3,612.6	3,678.4	3,879.4	4,110.4	4,174.4	4,246.1	4,273.0
Ontario .....	3,669.3	3,671.6	3,741.1	3,821.0	3,969.6	4,059.1	4,191.1
Manitoba .....	3,596.1	3,650.3	3,759.8	3,832.1	4,022.1	4,058.8	4,335.9
Saskatchewan .....	3,172.2	3,243.7	3,285.6	3,410.7	3,423.0	3,420.0	3,387.4
Alberta .....	3,095.1	3,179.6	3,012.6	3,110.4	3,135.0	3,198.7	3,332.8
British Columbia .....	3,253.7	3,201.4	3,376.9	3,470.5	3,498.2	3,543.0	3,672.5
Yukon .....	—	2,200.7	2,074.6	2,063.3	2,087.7	2,072.1	2,022.3
Northwest Territories .....	1,983.3	1,836.9	1,754.4	1,807.6	1,915.3	1,893.9	2,022.0

See footnote(s) at end of table.

TABLE 12. Selected Paid Hours Ratios, General and Allied Special Hospitals,<sup>1</sup> by Province, 1961-68 - Concluded

Province	Paid hours, total hospital personnel per patient-day <sup>2</sup>									
	1961	1962	1963	1964	1965	1966	1967	1968		
<b>Canada</b>										
Public general by bed size .....	12.5	12.9	13.2	13.6	13.9	14.4	15.0	15.1		
1- 9 beds .....	10.5	10.7	10.6	10.5	10.5	11.4	11.8	12.0		
10- 24 " .....	8.8	9.0	8.9	9.2	9.4	9.6	9.9	10.3		
25- 49 " .....	9.0	9.1	9.2	9.4	9.4	9.7	10.0	10.2		
50- 99 " .....	10.1	10.0	10.3	10.5	10.8	10.9	11.4	11.7		
100-199 " .....	11.8	12.2	12.4	12.8	12.9	13.2	13.4	13.4		
200-299 " .....	13.5	13.3	13.6	13.6	13.9	14.2	14.4	14.5		
300-499 " .....	13.1	13.7	13.8	14.3	14.7	15.3	15.9	15.4		
500-999 " .....	14.2	14.4	15.1	15.7	16.3	17.2	18.3	18.3		
1,000+ " .....	14.7	15.7	15.6	16.0	16.5	17.0	17.2	17.6		
<b>All hospitals</b>										
Canada .....	11.6	11.8	12.0	12.4	12.6	13.0	13.5	13.6		
Newfoundland .....	12.9	12.6	12.6	13.4	13.6	14.4	15.3	16.0		
Prince Edward Island .....	12.6	11.8	12.1	12.4	12.3	12.3	12.7	12.8		
Nova Scotia .....	13.4	13.3	13.6	13.5	13.8	13.8	14.9	15.1		
New Brunswick .....	12.9	12.9	13.2	13.4	13.7	13.8	14.1	14.3		
Quebec .....	11.7	11.9	12.2	13.1	13.6	14.3	14.7	14.4		
Ontario .....	11.7	12.0	12.1	12.4	12.5	12.9	13.3	13.7		
Manitoba .....	12.1	12.1	12.3	12.6	13.1	13.5	14.0	14.4		
Saskatchewan .....	10.5	10.8	10.6	11.0	11.3	11.4	11.9	12.1		
Alberta .....	10.6	10.5	10.9	10.9	10.9	11.2	11.7	12.0		
British Columbia .....	10.9	10.8	10.7	11.2	11.4	11.3	11.7	11.9		
Yukon .....	10.8	11.1	12.4	13.5	13.8	12.9	13.3	13.7		
Northwest Territories .....	12.2		10.9	11.7	12.5	12.5	12.5	12.5		
Paid hours physiotherapy department <sup>3</sup> per 100 patient-days <sup>2</sup>					Paid hours physiotherapy department <sup>3</sup> per 100 treatments					
	1964	1965	1966	1967	1968	1964	1965	1966	1967	1968
<b>Canada</b>										
Public general by bed size .....	13.0	14.0	15.2	16.8	18.0	64.0	60.9	61.7	63.5	61.8
1- 9 beds .....	—	—	—	—	—	—	—	—	—	—
10- 24 " .....	1.0	2.0	2.0	3.7	7.6	57.8	68.7	91.9	48.4	61.6
25- 49 " .....	7.0	11.0	10.3	11.7	9.8	48.5	60.7	47.8	41.3	52.4
50- 99 " .....	7.0	9.0	7.9	9.7	11.8	61.9	56.7	50.6	49.9	52.4
100-199 " .....	8.0	9.0	9.7	10.1	11.3	47.0	48.3	50.5	50.1	46.0
200-299 " .....	11.0	12.0	12.5	13.7	15.4	63.5	59.0	56.1	60.1	54.9
300-499 " .....	12.0	14.0	16.3	18.0	17.1	62.3	56.1	59.9	62.0	61.1
500-999 " .....	16.0	17.0	18.1	20.7	22.9	72.2	67.6	69.4	71.8	70.5
1,000+ " .....	15.0	18.0	20.0	22.3	24.2	63.0	68.1	67.6	69.7	69.2
<b>All hospitals</b>										
Canada .....	15.0	17.0	17.9	19.7	20.8	62.4	61.0	60.2	62.0	59.6
Newfoundland .....	17.0	16.0	14.4	17.8	21.7	109.8	77.2	78.5	89.5	98.0
Prince Edward Island .....	24.0	27.0	27.7	24.9	23.7	88.8	94.3	100.1	96.7	89.1
Nova Scotia .....	12.0	12.0	14.5	15.5	13.9	42.5	45.9	51.0	45.4	36.0
New Brunswick .....	14.0	14.0	13.3	12.5	12.9	68.7	71.2	73.3	86.1	77.2
Quebec .....	16.0	16.0	17.7	19.8	18.7	78.7	69.3	66.3	66.9	63.0
Ontario .....	14.0	16.0	17.1	18.5	20.8	58.9	56.5	56.8	60.2	61.8
Manitoba .....	25.0	27.0	27.2	29.1	29.5	66.4	77.4	65.1	60.6	58.1
Saskatchewan .....	11.0	12.0	13.4	21.0	24.8	51.9	46.1	49.1	61.0	43.3
Alberta .....	14.0	23.0	24.7	26.1	28.7	58.6	73.0	70.3	70.5	67.3
British Columbia .....	14.0	16.0	17.4	18.2	18.4	54.7	52.7	52.4	52.2	49.5
Yukon .....	2.0	—	—	—	—	16.8	—	—	—	—
Northwest Territories .....	10.0	5.0	—	—	2.1	83.8	53.3	—	—	48.8

<sup>1</sup> Public, private and federal.

<sup>2</sup> Adults and children.

<sup>3</sup> Includes occupational therapy department.

**TABLE 13. Average Number of Patients per Day,<sup>1</sup> General and Allied Special Hospitals,<sup>2</sup> by Province, 1961 - 68**

Province	1961	1962 <sup>3</sup>	1963	1964 <sup>3</sup>	1965	1966	1967	1968
<b>Canada</b>								
Public general by bed size .....	87.8	90.3	92.3	94.6	96.5	96.4	98.3	101.5
1- 9 beds .....	5.7	5.7	5.7	6.4	6.9	6.3	6.1	5.9
10- 24 " .....	12.2	12.1	12.6	12.1	12.3	12.1	12.0	11.8
25- 49 " .....	26.6	26.2	26.0	25.7	25.8	25.5	24.9	24.8
50- 99 " .....	55.7	55.0	55.1	54.8	54.7	54.4	53.7	53.6
100-199 " .....	118.3	110.9	110.7	110.0	110.1	106.8	105.8	106.1
200-299 " .....	186.9	186.3	185.6	188.5	191.2	193.0	190.1	192.2
300-499 " .....	327.0	319.3	311.2	306.5	304.8	301.5	308.0	313.1
500-999 " .....	600.8	592.5	563.5	569.1	567.2	556.6	548.0	548.1
1,000+ " .....	1,043.5	1,039.7	1,049.6	1,063.0	1,043.6	1,039.9	1,009.0	1,039.6
<b>All hospitals</b>								
Canada .....	83.7	81.4	86.7	83.6	88.2	89.1	91.4	94.1
Newfoundland .....	39.9	38.4	42.6	40.9	44.9	42.9	45.8	47.9
Prince Edward Island .....	54.2	54.1	53.4	53.3	53.6	56.0	57.0	56.7
Nova Scotia .....	65.7	67.5	70.5	73.3	74.1	77.8	79.7	79.5
New Brunswick .....	80.8	80.5	80.4	83.9	83.5	84.0	83.3	85.3
Quebec .....	104.2	110.3	110.4	106.9	110.4	114.2	115.6	121.6
Ontario .....	131.8	111.3	139.5	120.3	139.3	140.1	146.4	150.3
Manitoba .....	54.8	53.5	55.1	53.8	53.7	55.0	54.6	55.6
Saskatchewan .....	36.9	36.4	38.3	39.3	39.2	39.3	39.1	38.1
Alberta .....	63.3	63.9	61.8	62.8	66.1	65.3	66.3	69.5
British Columbia .....	86.7	82.1	86.5	84.2	86.4	89.1	92.0	96.9
Yukon .....	27.4	30.3	14.6	13.6	13.1	14.2	13.7	13.0
Northwest Territories .....	3.7	6.0	8.0	7.2	6.8	6.5	7.0	5.9

<sup>1</sup> The average number of patients (adults and children) in a given hospital on a given day.

<sup>2</sup> Public, private and federal.

<sup>3</sup> For the years, 1962 and 1964, data include part-year operations; data for the years 1961, 1963, 1965-68 represent full-year operations only.

**TABLE 14. Revenue Fund Expenditure per Patient-day, General and Allied Special Hospitals,<sup>1</sup> by Province, 1961 - 68**

Province	1961	1962	1963	1964	1965	1966	1967	1968
dollars								
<b>Canada</b>								
Public general by bed size .....	24.32	26.36	28.58	31.00	34.05	38.56	43.40	48.44
1- 9 beds .....	19.94	21.69	23.33	23.98	23.43	26.74	29.95	33.74
10- 24 " .....	18.50	19.84	20.44	22.19	23.64	26.13	28.87	32.50
25- 49 " .....	19.02	20.09	21.28	22.59	24.37	27.03	30.37	34.18
50- 99 " .....	19.53	20.81	22.50	23.88	26.11	29.34	33.12	37.30
100-199 " .....	22.13	24.23	26.15	28.60	31.18	35.09	38.63	42.56
200-299 " .....	24.98	26.61	28.61	30.39	33.37	37.97	41.78	46.62
300-499 " .....	25.21	27.30	29.30	32.19	35.90	40.45	45.48	49.14
500-999 " .....	27.89	29.82	33.01	36.16	39.91	45.84	52.76	58.19
1,000+ " .....	30.09	33.00	35.34	38.02	40.97	46.24	51.60	59.31
<b>All hospitals</b>								
Canada .....	23.07	24.82	26.87	29.18	31.92	36.06	40.38	45.01
Newfoundland .....	19.92	21.15	23.01	26.27	28.34	32.22	38.56	44.87
Prince Edward Island .....	19.06	18.81	20.46	22.69	24.43	26.61	29.93	31.62
Nova Scotia .....	23.64	25.37	27.31	29.35	32.05	34.00	40.25	44.97
New Brunswick .....	23.66	25.55	27.46	28.68	30.03	32.25	36.02	39.20
Quebec .....	23.18	25.16	28.45	32.39	36.82	43.96	47.62	49.82
Ontario .....	24.26	26.22	28.00	29.84	32.15	35.69	40.41	46.95
Manitoba .....	21.94	22.69	24.25	25.63	27.90	31.33	35.54	39.89
Saskatchewan .....	21.16	22.82	23.40	25.62	27.65	30.52	33.94	38.62
Alberta .....	19.90	21.32	23.08	24.27	25.89	29.07	33.87	36.85
British Columbia .....	23.48	24.89	26.07	27.45	29.37	31.54	35.50	40.98
Yukon .....	29.43	28.37	45.32	50.25	51.73	52.87	70.74	89.87
Northwest Territories .....	32.21		22.04	25.18	27.68	29.37	32.87	36.36

<sup>1</sup> Only public hospitals are required to submit financial data to the Dominion Bureau of Statistics.

**TABLE 15. Salary Cost per Patient-day,<sup>1</sup> Total Hospital and Physiotherapy Department,<sup>2</sup> General and Allied Special Hospitals,<sup>3</sup> by Province, 1961-68**

Province	Total hospital salary cost per patient-day								Physiotherapy department <sup>2</sup> salary cost per patient-day				
	1961	1962	1963	1964	1965	1966	1967	1968	1964	1965	1966	1967	1968
dollars													
<b>Canada</b>													
Public general by bed size .....	15.74	17.20	18.18	19.92	22.06	25.22	28.83	32.31	0.26	0.30	0.35	0.42	0.49
1- 9 beds .....	12.34	13.53	14.34	15.06	15.16	17.33	19.73	22.56	—	—	—	—	—
10- 24 " .....	10.83	11.64	12.03	13.11	14.07	15.69	17.80	20.46	0.02	0.01	0.05	0.10	0.18
25- 49 " .....	11.57	12.09	12.71	13.56	14.61	16.30	18.71	21.50	0.16	0.24	0.24	0.29	0.25
50- 99 " .....	12.48	13.14	14.15	15.08	16.63	18.75	21.55	24.72	0.15	0.20	0.18	0.24	0.31
100-199 " .....	14.35	15.78	16.51	18.35	20.19	23.10	25.97	28.71	0.15	0.19	0.23	0.25	0.31
200-299 " .....	15.80	17.19	17.91	19.19	21.30	24.62	27.28	30.50	0.22	0.23	0.27	0.32	0.40
300-499 " .....	16.80	18.19	18.84	20.92	23.63	26.57	30.49	33.15	0.25	0.30	0.37	0.45	0.48
500-999 " .....	18.22	19.75	21.18	23.48	26.02	30.42	35.33	38.86	0.32	0.37	0.42	0.52	0.60
1,000+ " .....	19.68	22.03	23.30	25.23	27.26	30.87	34.96	40.32	0.36	0.41	0.48	0.59	0.69
<b>All hospitals</b>													
<b>Canada</b> .....	14.94	16.22	17.14	18.82	20.77	23.67	26.94	30.16	0.31	0.36	0.41	0.49	0.56
Newfoundland .....	10.93	11.09	11.76	13.96	15.03	17.01	21.06	25.89	0.27	0.36	0.37	0.47	0.52
Prince Edward Island .....	10.31	10.26	11.13	12.76	14.01	15.81	17.98	19.04	0.42	0.47	0.57	0.54	0.56
Nova Scotia .....	14.12	14.92	15.53	16.94	18.11	19.62	23.45	26.96	0.25	0.27	0.31	0.32	0.38
New Brunswick .....	13.63	15.05	15.85	16.62	17.44	18.79	22.11	24.61	0.24	0.24	0.24	0.24	0.29
Quebec .....	14.39	16.27	18.11	21.24	24.73	30.18	34.08	35.17	0.31	0.36	0.44	0.56	0.51
Ontario .....	16.19	17.61	18.23	19.47	21.05	23.41	26.57	31.07	0.30	0.35	0.40	0.47	0.58
Manitoba .....	14.75	14.98	15.68	16.76	18.34	20.43	23.04	26.42	0.43	0.49	0.54	0.60	0.67
Saskatchewan .....	14.07	15.19	15.05	16.48	17.81	19.64	21.70	24.76	0.26	0.31	0.31	0.42	0.54
Alberta .....	12.89	13.40	14.41	15.11	16.25	18.19	21.42	23.69	0.31	0.47	0.53	0.64	0.75
British Columbia .....	15.96	17.03	17.42	18.45	19.75	21.15	24.09	28.52	0.31	0.36	0.41	0.46	0.55
Yukon .....	16.22	—	25.28	27.97	31.20	30.91	43.95	50.64	—	—	—	—	—
Northwest Territories .....	16.74	15.74	12.37	13.97	15.05	15.92	18.21	20.83	0.22	0.21	—	—	0.07

<sup>1</sup> Adults and children.

<sup>2</sup> Includes occupational therapy department.

<sup>3</sup> Only public hospitals are required to submit financial data to the Dominion Bureau of Statistics.

**TABLE 16. Selected Physiotherapy Department<sup>1</sup> Cost Ratios, General and Allied Special Hospitals,<sup>2</sup> by Province, 1964-68**

Province	Physiotherapy department <sup>2</sup> direct cost per treatment					Physiotherapy department <sup>2</sup> salary cost per treatment				
	1964	1965	1966	1967	1968	1964	1965	1966	1967	1968
dollars										
<b>Canada</b>										
Public general by bed size .....	1.41	1.40	1.50	1.69	1.79	1.33	1.32	1.40	1.58	1.67
1- 9 beds .....	—	—	—	—	—	—	—	—	—	—
10- 24 " .....	1.18	2.56	3.89	2.10	1.98	1.26	.64	2.12	1.27	1.44
25- 49 " .....	1.17	1.39	1.29	1.29	1.59	1.08	1.31	1.18	1.08	1.34
50- 99 " .....	1.42	1.40	1.28	1.34	1.56	1.22	1.23	1.18	1.21	1.41
100-199 " .....	1.04	1.12	1.27	1.33	1.32	0.97	1.06	1.17	1.25	1.24
200-299 " .....	1.33	1.24	1.29	1.51	1.54	1.23	1.17	1.19	1.39	1.42
300-499 " .....	1.32	1.25	1.41	1.63	1.81	1.25	1.19	1.33	1.54	1.71
500-999 " .....	1.60	1.60	1.70	1.93	2.00	1.48	1.50	1.60	1.77	1.85
1,000+ " .....	1.54	1.61	1.71	1.95	2.07	1.47	1.52	1.63	1.84	1.97
<b>All hospitals</b>										
<b>Canada</b> .....	1.41	1.41	1.48	1.67	1.75	1.31	1.32	1.38	1.54	1.64
Newfoundland .....	3.00	2.12	2.19	2.55	2.78	2.20	1.68	1.78	2.12	2.36
Prince Edward Island .....	1.69	1.71	2.09	2.17	2.19	1.57	1.65	2.06	2.10	2.10
Nova Scotia .....	1.22	1.39	1.31	1.03	1.09	0.98	1.17	1.15	0.95	1.02
New Brunswick .....	1.44	1.35	1.50	2.06	2.14	1.37	1.29	1.41	1.80	1.74
Quebec .....	1.72	1.56	1.74	2.02	1.82	1.59	1.52	1.62	1.89	1.73
Ontario .....	1.38	1.35	1.40	1.59	1.81	1.30	1.27	1.32	1.50	1.72
Manitoba .....	1.20	1.54	1.43	1.39	1.45	1.13	1.42	1.29	1.25	1.32
Saskatchewan .....	1.24	1.18	1.23	1.60	1.75	1.17	1.11	1.12	1.30	1.46
Alberta .....	1.28	1.49	1.58	1.80	1.84	1.21	1.40	1.47	1.64	1.68
British Columbia .....	1.23	1.21	1.30	1.41	1.52	1.16	1.12	1.22	1.30	1.47
Yukon .....	—	—	—	—	—	—	—	—	—	—
Northwest Territories .....	1.97	2.10	—	—	—	1.96	2.10	—	—	—

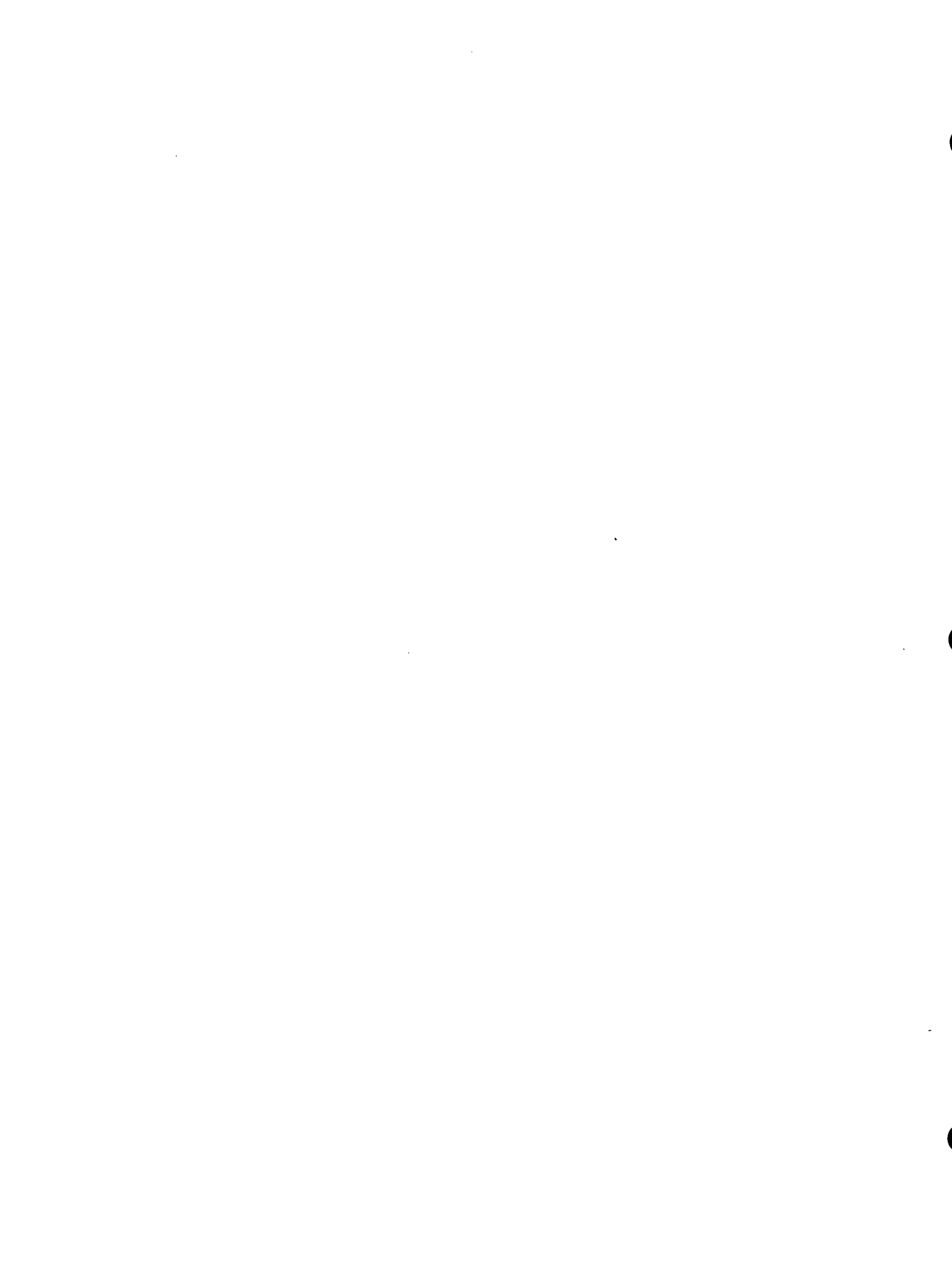
<sup>1</sup> Includes occupational therapy department.

<sup>2</sup> Only public hospitals are required to submit financial data to the Dominion Bureau of Statistics.











## SELECTED PUBLICATIONS ON HEALTH STATISTICS

Obtainable from Publications Distribution Unit, Financial Services Section,  
Dominion Bureau of Statistics or Queen's Printer, Ottawa, Canada

Catalogue  
number

### VITAL STATISTICS

- 84-001 Vital Statistics, M., Bil.
- 84-201 Vital Statistics—Preliminary, A., Bil.
- 84-202 Vital Statistics—Final, A., Bil.
- 84-203 Causes of Death A.E. (detailed 4th digit list for Canada and provinces by age and sex)

#### Analytical Reports:

##### Causes of Death (detailed 4th digit list):

- 84-514 Causes of Death, Canada, 1950-60, O., E.
- 84-519 Causes of Death, Canada, 1958-1964, O., E.

##### Life Tables:

- 84-510 Canadian Life Tables, 1950-1952, 1955-1957, O., Bil.
- 84-512 Provincial and Regional Life Tables, 1950-1952, 1955-1957, O., Bil.
- 84-515 Life Tables for Canada and Regions, 1941 and 1931, O., Bil.
- 84-516 Canadian Life Tables, 1960-1962, O., Bil.
- 84-517 Provincial and Regional Life Tables, 1960-1962, O., Bil.
- 84-518 Life Expectancy Trends, 1930-1932 to 1960-1962, O., E.
- 84-527 Complete Life Tables by Sex, Canada and provinces, 1965-1967, O., Bil.

##### Cancer Mortality:

- 84-520 General Cancer Mortality, 1950-1963, O., Bil.
- 84-521 Cancer Mortality by Site, 1950-1963, O., Bil.

##### Accident Mortality:

- 84-522 Accident Mortality, 1950-1964, O., Bil.

##### Infant Mortality:

- 84-524 Infant Mortality, 1950-1964, O., Bil.

##### Nuptiality:

- 84-523 Nuptiality, 1950-1964, O., Bil.

### HOSPITALS AND HEALTH MANPOWER

- 83-001 Hospital Indicators, Q., Bil.
- 83-201 List of Canadian Hospitals and Related Institutions and Facilities, A., Bil.
- 83-210 Hospital Statistics, Vol. I, Hospital Beds, A., Bil.
- 83-211 Hospital Statistics, Vol. II, Hospital Services, A., Bil.
- 83-212 Hospital Statistics, Vol. III, Hospital Personnel, A., Bil.
- 83-213 Hospital Statistics, Vol. IV, Balance Sheets, A., Bil.
- 83-214 Hospital Statistics, Vol. V, Hospital Revenues, A., Bil.
- 83-215 Hospital Statistics, Vol. VI, Hospital Expenditures, A., Bil.
- 83-216 Hospital Statistics, Vol. VII, Hospital Indicators, A., Bil.
- 83-217 Hospital Statistics (Preliminary Report), A., Bil.
- 83-205 Mental Health Statistics, Vol. III, Institutional Facilities, Services and Finances, A., Bil.
- 83-207 Tuberculosis Statistics, Vol. II, Institutional Facilities, Services and Finances, A., Bil.
- 83-218 Annual Salaries of Hospital Nursing Personnel, A., Bil.
- 83-219 Annual Salaries of Public Health Nurses, A., Bil.
- 83-507 Health Manpower in Hospitals—General, 1961-68, O., E.
- 83-508 Health Manpower in Hospitals—Radiological Technicians, 1961-68, O., E.
- 83-509 Health Manpower in Hospitals—Laboratory Technologists, 1961-68, O., E.
- 83-510 Health Manpower in Hospitals—Physio-Occupational Therapists, 1961-68, O., E.
- 83-511 Health Manpower in Hospitals—Dietitians, 1961-68, O., E.
- 83-512 Health Manpower in Hospitals—Pharmacists, 1961-68, O., E.
- 83-513 Health Manpower in Hospitals—Medical Record Librarians, 1961-68, O., E.
- 83-514 Health Manpower in Hospitals—Psychologists, 1961-68, O., E.
- 83-515 Health Manpower in Hospitals—Social Workers, 1961-68, O., E.
- 83-516 Health Manpower in Hospitals—Radiologists and Pathologists, 1961-68, O., E.
- 83-517 Health Manpower in Hospitals—Graduate Nurses, 1961-68, O., E.
- 83-518 Health Manpower in Hospitals—Nursing Assistants, 1961-68, O., E.

### MENTAL HEALTH STATISTICS

- 83-204 Mental Health Statistics, Vol. I, Institutional Admissions and Separations, A., Bil.
- 83-208 Mental Health Statistics, Vol. II, Patients on Books of Institutions, A., Bil.
- 83-504 Rates and Probabilities of Separation from Mental Institutions, 1956-58, E.
- 83-505 Trends in Hospital Care and Patient Characteristics, 1955-1963, E.
- 83-506 Expectation of Admission to a Canadian Psychiatric Institution, O., Bil.  
Mental Health Statistics, Patient Movement, Preliminary, A., Bil. (Free)

### PUBLIC HEALTH STATISTICS

- 82-201 Notifiable Diseases, A., Bil.
- 83-206 Tuberculosis Statistics, Vol. I, Tuberculosis Morbidity and Mortality, A., Bil.
- 82-522 Infectious Hepatitis, 1961, E.
- 82-206 Hospital Morbidity, A., Bil.

### HEALTH AND WELFARE TECHNICAL REPORTS

1. Canadian Abridged Life Tables, 1961-1963, E. (Free)
2. Provincial Abridged Life Tables, 1961-1963, E. (Free)
3. Canadian Joint Life Tables, 1960-1962, E. (Free)

M.—Monthly      Q.—Quarterly      E.—English      A.—Annual      O.—Occasional      B.—Bilingual

*In addition to the selected publications listed above, the Dominion Bureau of Statistics publishes a wide range of statistical reports on Canadian economic and social affairs including detailed reports on the 1961 and 1966 Censuses. A comprehensive catalogue of all current publications is available free on request from the Dominion Bureau of Statistics, Ottawa 3.*