



Agriculture and  
Agri-Food Canada

Agriculture et  
Agroalimentaire Canada

**Rural Municipality of De Salaberry**


**Information Bulletin 98-22**

## **Soils and Terrain**

An introduction  
to the land resource

Land Resource Unit  
Brandon Research Centre



Canada 

## **Rural Municipality of De Salaberry**

### **Information Bulletin 98-22**

Prepared by:

Land Resource Unit,  
Brandon Research Centre, Research Branch,  
Agriculture and Agri-Food Canada.

Department of Soil Science, University of Manitoba.

Manitoba Soil Resource Section,  
Soils and Crops Branch, Manitoba Agriculture.

Printed April, 1999

## PREFACE

This is one of a new series of information bulletins for individual rural municipalities of Manitoba. They serve to introduce the newly developed digital soil databases and illustrate several typical derived and interpretive map products for agricultural land use planning applications. The bulletins will also be available in diskette format for each rural municipality.

Information contained in this bulletin may be quoted and utilized with appropriate reference to the originating agencies. The authors and originating agencies assume no responsibility for the misuse, alteration, re-packaging, or re-interpretation of the information.

This information bulletin serves as an introduction to the land resource information available for the municipality. More detailed information, including copies of the primary soil and terrain maps at larger scales, may be obtained by contacting

Land Resource Unit  
Room 360 Ellis Bldg, University of Manitoba  
Winnipeg, Manitoba R3T 2N2  
Phone: 204-474-6118 FAX: 204-474-7633

## CITATION

Land Resource Unit, 1999. Soils and Terrain. An Introduction to the Land Resource. Rural Municipality of De Salaberry. Information Bulletin 98-22, Brandon Research Centre, Research Branch, Agriculture and Agri-Food Canada

## ACKNOWLEDGMENTS

Continuing support for this project has been provided by Brandon Research Centre and PFRA Manitoba. The project was initiated by the Land Resource Unit under the Canada-Manitoba Agreement of Agricultural Sustainability.

The following individuals and agencies contributed significantly to the compilation, interpretation, and derivation of the information contained in this report.

Managerial and administrative support was provided by:

R.G. Eilers, Head, Land Resource Unit, Brandon Research Centre, Research Branch, Agriculture and Agri-Food Canada.  
G.J. Racz, Head, Department of Soil Science, University of Manitoba.

Technical support was provided by:

G.W. Lelyk, and P. Cyr, Land Resource Unit, Brandon Research Centre, Research Branch, Agriculture and Agri-Food Canada.  
J. Fitzmaurice, and A. Waddell, Department of Soil Science, University of Manitoba.  
G.F. Mills, P. Ag, Winnipeg, Manitoba  
J. Griffiths, and C. Aglugub, Soil Resource Section, Soils and Crops Branch, Manitoba Agriculture.  
R. Lewis, PFRA, Agriculture and Agri-Food Canada.

Professional expertise for data conversion, correlation, and interpretation was provided by:

W.R. Fraser and R.G. Eilers, Land Resource Unit, Brandon Research Centre, Research Branch, Agriculture and Agri-Food Canada.  
P. Haluschak and G. Podolsky, Soil Resource Section, Soils and Crops Branch, Manitoba Agriculture.

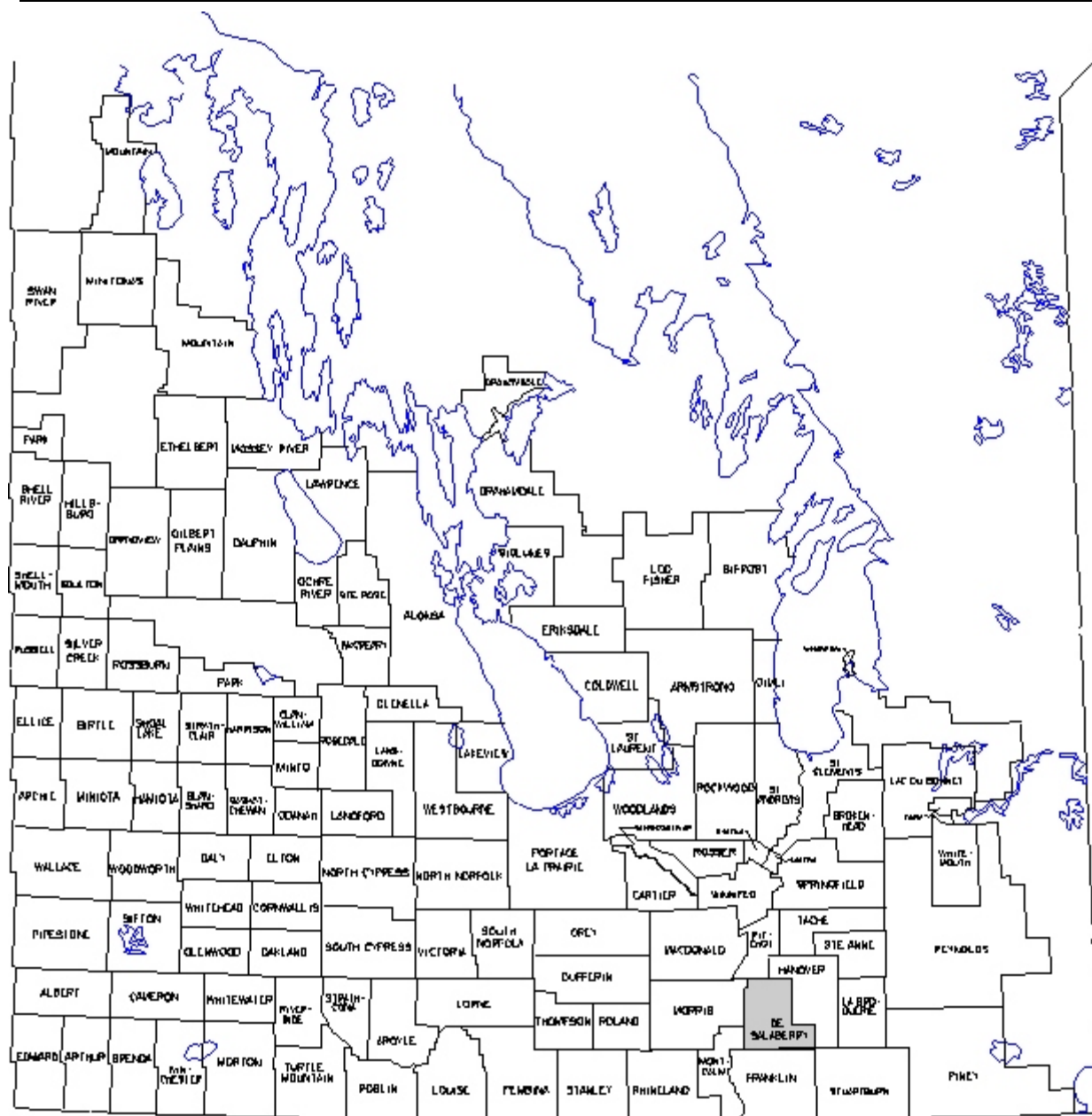


Figure 1. Rural municipalities of southern Manitoba.

## INTRODUCTION

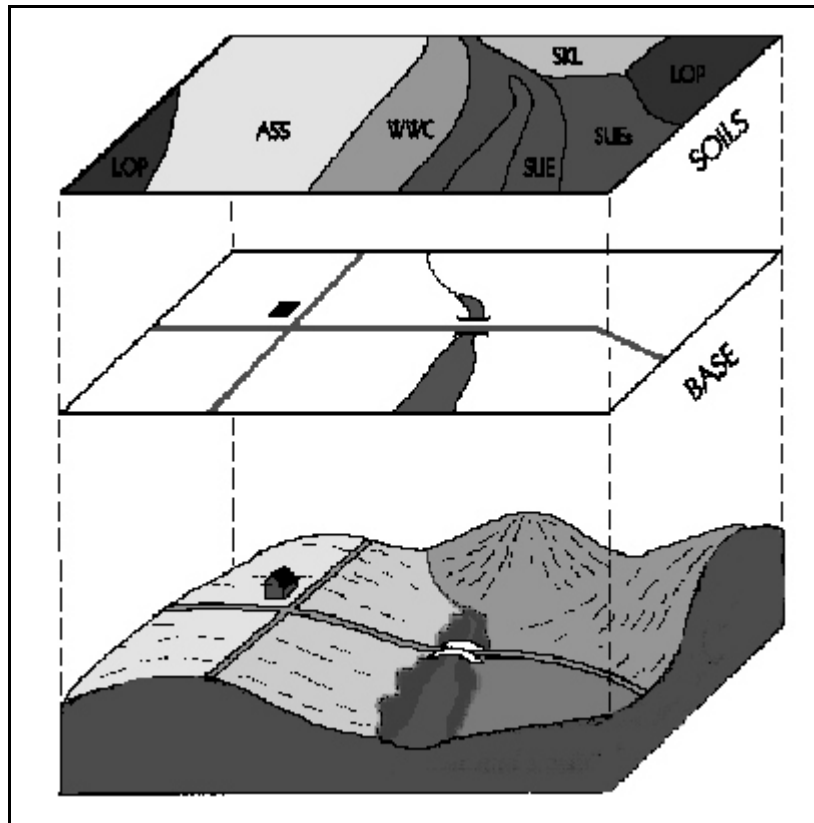
The location of the Rural Municipality of De Salaberry is shown in Figure 1. A brief overview of the database information, and general environmental conditions for the municipality are presented. A set of maps derived from the data for typical agricultural land use and planning applications are also included.

The soil map and database were compiled and registered using the Geographic Information System (PAMAP GIS) facilities of the Land Resource Unit. These databases were used in the GIS to create the generalized, derived and interpretive maps and statistics in this report. The final maps were compiled and printed using Coreldraw.

This bulletin is available in printed or digital format. The digital bulletin is a Windows based executable file which offers additional display options, including the capability to print any portion of the bulletin.

## LAND RESOURCE DATA

The soil and terrain information presented in this bulletin was compiled as part of a larger project to provide a uniform level of land resource information for agricultural and regional planning purposes throughout Agro-Manitoba. This information was compiled and analysed in two distinct layers as shown in Figure 2.



**Figure 2.** Soil and Base Map data.

## Base Layer

Digital base map information includes the municipality and township boundaries, along with major streams, roads and highways. Major rivers and lakes from the base layer were also used as common boundaries for the soil map layer. Water bodies larger than 25 ha in size were digitized as separate polygons.

## Soil Layer

The most detailed soil information currently available was selected as the data source for the digital soil layer for each rural municipality.

Comprehensive detailed soil maps (1:20 000 to 1:50 000 scale) have been published for many rural municipalities. Where they were available, the individual soil map sheets were digitized and compiled as a single georeferenced layer to match the digital RM base. Map polygons have one or more soil series components, as well as slope and stoniness classes. Soil database information was produced for each polygon, to meet national standards (MacDonald and Valentine, 1992). Slope length classes were also added, based on photo-interpretation.

Older, reconnaissance scale soil maps (1:126 720 scale) represented the only available soil data source for many rural municipalities. These maps were compiled on a **soil association** basis, in which soil landscape patterns were identified with unique surficial geological deposits and textures. Each soil association consists of a range of different soils ("associates") each of which occurs in a repetitive position in the landscape. Modern soil series that best represent the soil association were identified for each soil polygon. The soil and modifier codes provide a link to additional databases of soil properties. In this way, both detailed and reconnaissance soil map polygons were related to soil drainage, surface texture, and other soil properties to produce various interpretive maps. Slope length classes were also added, based on photo-interpretation.

## SOIL AND TERRAIN OVERVIEW

The Rural Municipality (RM) of De Salaberry covers an area of 7 townships (approximately 67 300 ha) in southern Manitoba. It is located 28 kilometres south of the City of Winnipeg on the east side of the Red River (page 3). The Town of St. Pierre-Jolys is the largest population and agriculture service centre with smaller concentrations of people in St. Malo, Otterburne and La Rochelle.

The climate in the municipality can be related to weather data from Morris located 13 kilometres west of the municipality. The mean annual temperature is 2.8°C and the mean annual precipitation is 516 mm (Environment Canada, 1993). The average frost-free period is 118 days and degree-days above 5°C accumulated from May to September average 1778 (Ash, 1991). An evaluation of growing conditions in this region of Manitoba can be related to estimates of seasonal moisture deficit and effective growing degree-days (EGDD) above 5°C. The seasonal moisture deficit calculated between May and September is slightly greater than 250 mm and the estimated effective growing degree-days accumulated from May to September average slightly less than 1600 (Agronomic Interpretations Working Group, 1995). These parameters provide an indication of moisture and heat energy available for crop growth and are generally adequate to support a wide range of crops adapted to western Canada.

Physiographically, the municipality occurs mainly in the Red River Valley although the southeast corner is in the Southeastern Plain. The entire area is located within the Manitoba Plain (Canada-Manitoba Soil Survey, 1980). The Red River Valley is dominantly level and flat-lying in contrast to the Southeastern Plain which is level to gently sloping and broken in places by low ridges. The land surface in the municipality is very flat with slopes less than 2 percent (page 9). Elevations range from 285 metres above sea level (m asl) in the southeast corner of the area, decreasing at a rate of 2.7 m/km or 14 ft/mi to about 240 m asl along the boundary between the Southeastern Plain and the Red River Valley. The land surface in the Red River Valley falls more gently at a rate of 0.3 m/km or 1.6 ft/mi. Natural drainage is poorly developed throughout most of the municipality resulting in slow removal of surface waters in a northwesterly direction via the Rat River, Marsh River and

Joubert Creek. Drainage for agricultural purposes is facilitated by a network of man-made drains constructed to enhance runoff and reduce the duration of surface ponding. All drainage waters eventually flow to the Red River.

Soil materials in the Red River Valley were deposited during the time of glacial Lake Agassiz and consist primarily of deep, clayey lacustrine sediments. An area of clay soils north of St. Pierre and east of the Rat River is underlain by silty lacustrine sediments and variable textured, stratified alluvial deposits occur in the narrow floodplain along the Rat River. Soil materials in the Southeastern Plain consist primarily of thin sandy to coarse loamy textured lacustrine sediments underlain by stony, extremely calcareous loam textured glacial till. Local areas of waterworked, extremely calcareous, stony loam till and a few deposits of gravelly sand outwash and beach materials are common. Surface texture in the municipality is dominantly clayey (page 11).

Soils in the municipality have been mapped at a reconnaissance level (1:126 720 scale) and published in the soil survey report for the Winnipeg and Morris map sheet areas (Ehrlich et al., 1953). Detailed soil studies at a 1:20 000 scale are available for selected areas around the towns of St. Pierre and Otterburne (Michalyna et al., 1975). According to the Canadian System of Soil Classification (Soil Classification Working Group, 1998), the soils are classified as dominantly Black Chernozems (Red River and Emerson associations) in combination with Humic Gleysols (poorly drained soils of the Red River and Emerson associations). Regosolic soils of the Riverdale association occur on the terrace and floodplain deposits along the Rat River. Dark Gray Chernozem soils of the Poppleton and Pelan associations occur on sandy materials in the southeast part of the municipality (page 11). A more detailed and complete description of the type, distribution and textural variability of soils in the municipality is provided in the published soil surveys for the area.

The flat topography throughout the area and the high clay content of the Red River Valley soils result in the majority of the municipality being classified as imperfectly to poorly drained (page 13).

Management considerations are primarily related to heavy clay textures and wetness (page 15). There are no significant relief features to contend with although moderate to excessive stony and cobbly conditions are common in the southeast portion of the area. Areas of weak salinity occur at scattered locations throughout the Emerson soil association north of St. Pierre..

Most of the soils in the municipality are rated in **Class 2** (42 percent) and **Class 3** (52 percent) for agricultural capability with moderate to moderately severe limitations for agriculture (page 17). Three percent of the soils are rated as **Good** and 18 percent as **Fair** for irrigation suitability. The remainder are rated as **Poor** for irrigation primarily due to fine texture and poor drainage (page 19). The major problem limiting the agricultural use of soils is inadequate drainage. Unfavourable workability and potential degradation due to erosion by wind are other important limitations.

One of the issues currently receiving considerable attention is the sustainability of agricultural practices and their potential impact on the soil and groundwater environment. To assist in highlighting this concern to land planners and agricultural producers, an assessment of potential environmental impact (EI) under irrigation has been included in this bulletin (page 21). As shown, 77 percent of the municipality is at **Minimal** risk of degradation due mainly to the heavy texture of the soil and the slow drainage. These conditions reduce the risk for deep leaching of potential contaminants on the soil surface. This EI map is intended to be used in association with the irrigation suitability map.

Another issue of concern to producers, soil conservationists and land use specialists is soil erosion caused by agricultural cropping and tillage practices. Areas with potential for water erosion and where special practices should be adopted to mitigate this risk are shown on page 23. The risk for degradation due to water erosion is **Negligible** for 61 percent of the land in the municipality due to very flat topography, clayey texture and poor drainage. About 33 percent of the soils with clayey texture and imperfect drainage are considered to have a **Low** risk for water erosion. Management practices focus primarily on maintaining adequate crop residues to provide sufficient surface cover.

Land use in the RM of De Salaberry is primarily agricultural with small treed areas around farmsteads and larger areas of trees and grassland on the sandy soils in the Southeastern Plain. An assessment of the status of land use in 1995 was obtained through an analysis of satellite imagery. It showed that annual crops occupied about 71 percent of the land in the RM with forage production taking place on 5 percent of the area. Grassland occupies 11 percent of the area and trees cover about 9 percent. The grassland and larger treed areas occur mainly in the southeast part of the municipality and provide grazing capacity as well as wildlife habitat. Various non-agricultural uses such as infrastructure for urban areas, transportation and recreation occupy about 3 percent of the municipality (page 25).

While the majority of soils in the RM of De Salaberry have moderate to moderately severe limitations for arable agriculture, the clayey textured soils require management practices which maintain adequate surface drainage, soil structure and tilth. All soils require careful management to protect against the risk of wind erosion. This includes leaving adequate crop residues on the surface to provide sufficient trash cover during the early spring period. The provision of shelter belts, minimum tillage practices, and crop rotations including forages will help to reduce the risk of soil degradation and maintain productivity.

A major portion of the municipality has low relief and a dominance of imperfectly to poorly drained soils. Clayey soils with slow to very slow permeability are subject to surface ponding and slow runoff unless adequate drainage is provided. This situation arises most often during spring snowmelt or following heavy rains. In contrast, the sandy soils are much more permeable near the surface but because of the presence of a loamy till subsoil, they typically have seasonal high water tables. Consequently, improvement and maintenance of water management infrastructure on a regional basis is required to reduce surface ponding while maintaining adequate soil moisture for crop growth.

## DERIVED AND INTERPRETIVE MAPS

A large variety of computer derived and interpretive maps can be generated from the digital soil and landscape databases. These maps are based on selected combinations of database values and assumptions.

**Derived maps** show information that is given in one or more columns in the computer map legend (such as soil drainage or slope class).

**Interpretive maps** portray more complex land evaluations based on a combination of soil and landscape information. Interpretations are based on soil and landscape conditions in each polygon. Interpretative maps typically show land capabilities, suitabilities, or risks related to sustainability.

Several examples of derived and interpretive maps are included in this information bulletin:

### Derived Maps

Slope

Generalized Soil

Drainage

Management Considerations

### Interpretative Maps

Agricultural Capability

Irrigation Suitability

Potential Environmental Impact

Water Erosion Risk

Land Use

Digital databases derived from recent detailed soil inventories contain additional detailed information about significant inclusions of differing soil and slope conditions in each map polygon. This information can be portrayed at larger map scale than shown in this bulletin.

Information concerning particular interpretive maps, and the primary soil and terrain map data, can be obtained by contacting the Manitoba Soil Resource Section of Manitoba Agriculture, the local PFRA office, or the Land Resource Unit.

The maps have all been reduced in size and generalized (simplified) in order to portray conditions for an entire rural municipality on one page. These generalized maps provide a useful overview of conditions within a municipality, but are not intended to apply to site specific land parcels. On-site evaluations are recommended for localized site specific land use suitability requirements.



**Slope Map.**

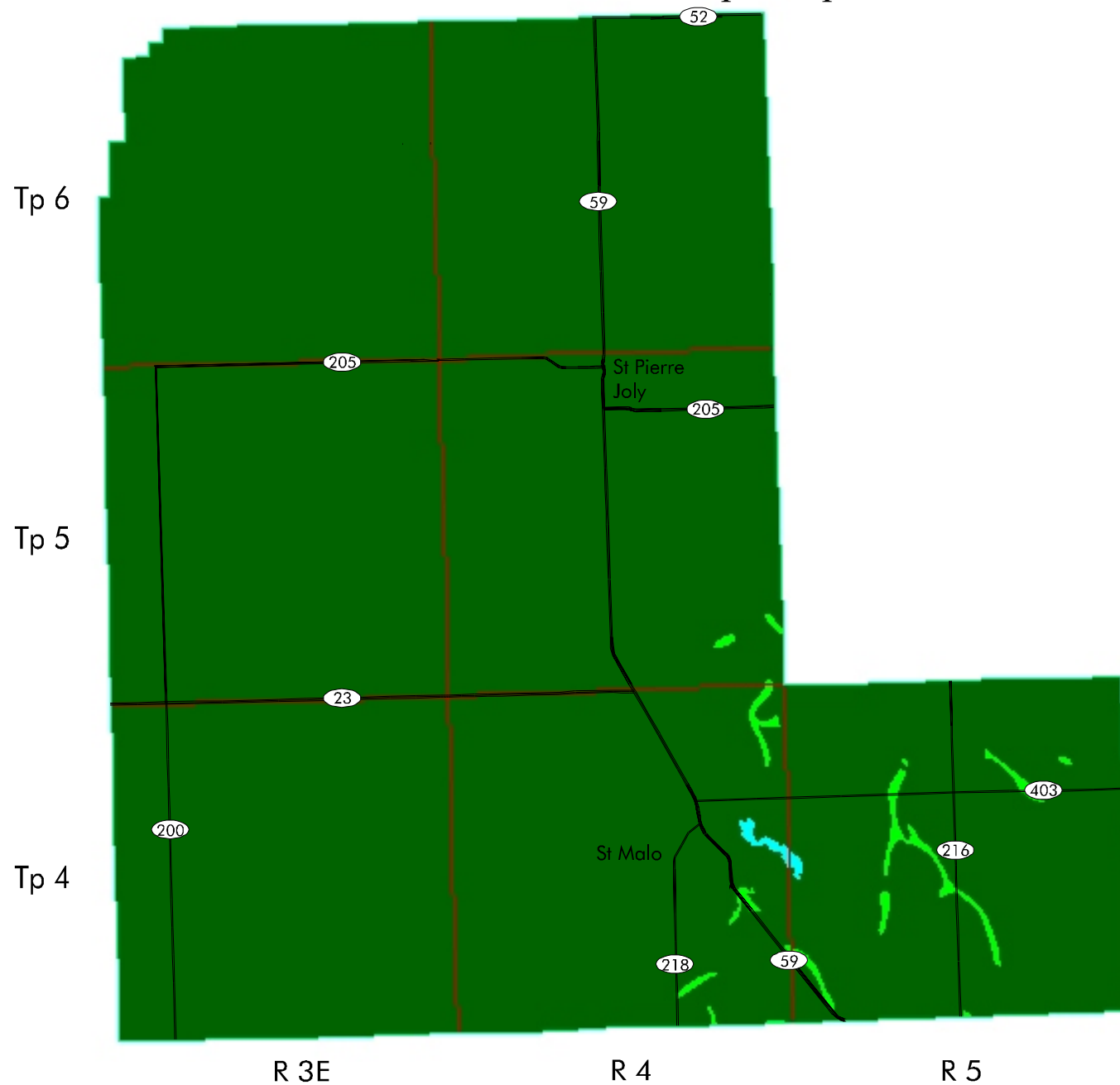
Slope describes the steepness of the landscape surface. The slope classes shown on this map are derived from the digital soil and terrain layer database. Specific colours are used to indicate the dominant slope class for each polygon in the RM. Additional slope classes may occur in each polygon area, but cannot be portrayed at this reduced map scale.

**Table 1. Slope Classes<sup>1</sup>**

<b>Slope Class</b>	<b>Area (ha)</b>	<b>Percent of RM</b>
<b>0 - 2 %</b>	<b>66736</b>	<b>99.3</b>
<b>2 - 5 %</b>	<b>438</b>	<b>0.7</b>
<b>5 - 9 %</b>	<b>0</b>	<b>0.0</b>
<b>9 - 15 %</b>	<b>0</b>	<b>0.0</b>
<b>15 - 30 %</b>	<b>0</b>	<b>0.0</b>
<b>&gt; 30 %</b>	<b>0</b>	<b>0.0</b>
<b>Unclassified</b>	<b>0</b>	<b>0.0</b>
<b>Water</b>	<b>58</b>	<b>0.1</b>
<b>Total</b>	<b>67233</b>	<b>100.0</b>

<sup>1</sup> Area has been assigned to the dominant slope in each soil polygon.

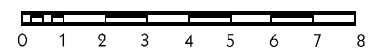
## Slope Map



## Slope Classes

Dark Green	0 - 2 %
Bright Green	2 - 5 %
Light Green	5 - 9 %
Yellow	9 - 15 %
Orange	15 - 30 %
Red	> 30 %
Light Blue	Water
Grey	Unclassified

## Scale



(Km.)

Universal Transverse Mercator  
(NAD27) ProjectionLand Resource Unit  
Brandon Research Centre  
February 1999

### Generalized Soil Map.

The most recently available soil maps were digitized to produce the new digital soil map. For older reconnaissance soil maps, areas of overprinted symbols or significant differences in topography have been delineated as new polygons. All soil polygons have been digitized and translated into modern soil series equivalents.

The general soil groups provide a very simplified overview of the soil information contained in the digital soil map. The hundreds of individual soil polygons have been simplified into broad groups of soils with similar parent material origins, textures, and drainage classes. The dominant soil in each polygon determines the soil group, area, and colour for the generalized soil map. Gleysolic soils groups have poor to very poor drainage, while other mineral soil groups typically have a range of rapid, well, or imperfectly drained soils.

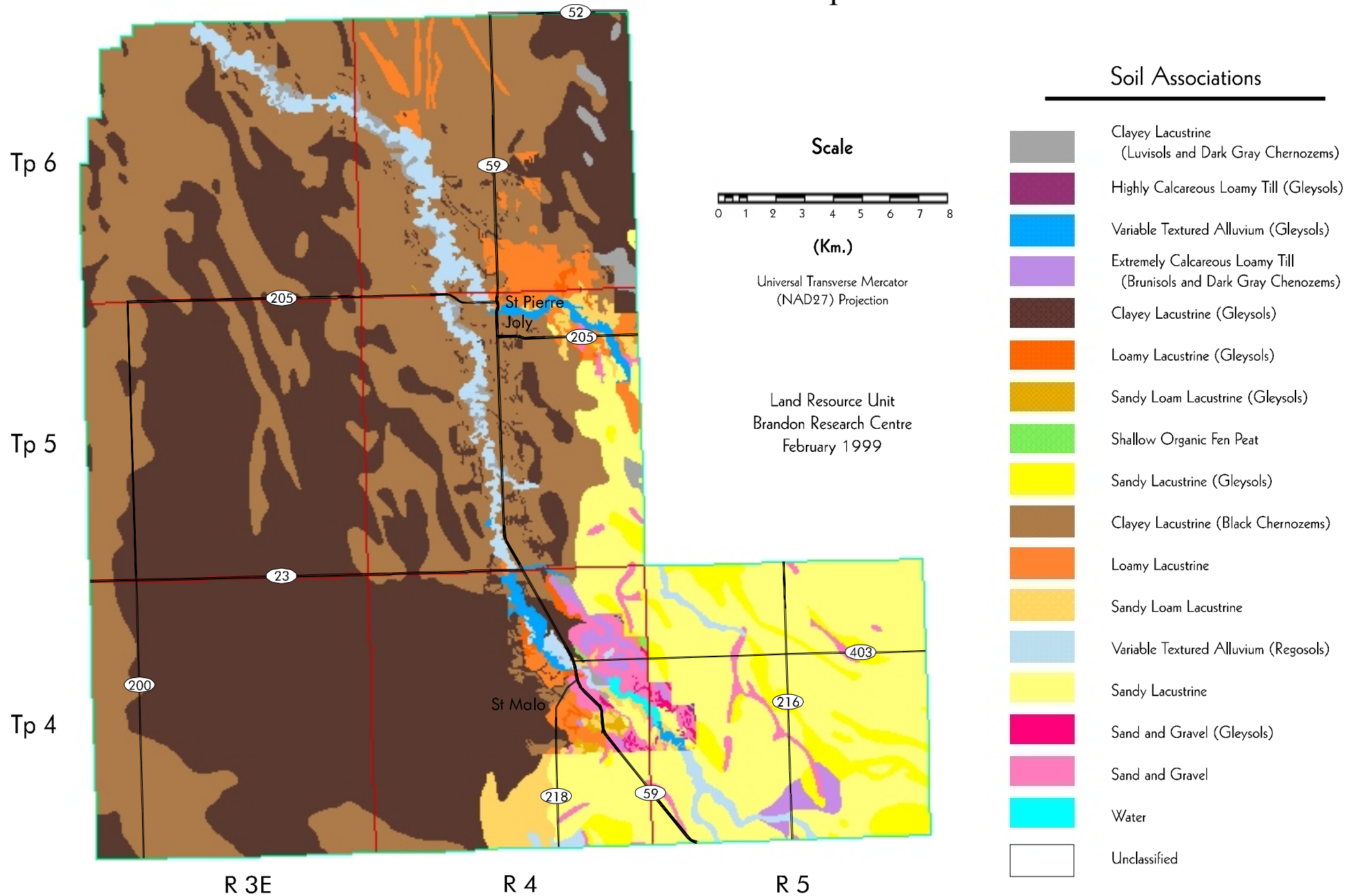
More detailed maps showing the dominant and subdominant soils in each polygon can also be produced at larger map scales.

**Table 2. Generalized Soil Groups<sup>1</sup>**

<b>Soil Groups</b>	<b>Area (ha)</b>	<b>Percent of RM</b>
<b>Clayey Lacustrine (Luvisols and Dark Gray Chernozems)</b>	<b>638</b>	<b>0.9</b>
<b>Highly Calcareous Loamy Till (Gleysols)</b>	<b>7</b>	<b>0.0</b>
<b>Variable Textured Alluvium (Gleysols)</b>	<b>417</b>	<b>0.6</b>
<b>Extremely Calcareous Loamy Till (Brunisols and Dark Gray Chernozems)</b>	<b>508</b>	<b>0.8</b>
<b>Clayey Lacustrine (Gleysols)</b>	<b>26377</b>	<b>39.2</b>
<b>Loamy Lacustrine (Gleysols)</b>	<b>167</b>	<b>0.2</b>
<b>Sandy Loam Lacustrine (Gleysols)</b>	<b>78</b>	<b>0.1</b>
<b>Shallow Organic Fen Peat</b>	<b>20</b>	<b>0.0</b>
<b>Sandy Lacustrine (Gleysols)</b>	<b>1832</b>	<b>2.7</b>
<b>Clayey Lacustrine (Black Chernozems)</b>	<b>21981</b>	<b>32.7</b>
<b>Loamy Lacustrine (Black Chernozems)</b>	<b>1591</b>	<b>2.4</b>
<b>Sandy Loam Lacustrine</b>	<b>1012</b>	<b>1.5</b>
<b>Variable Textured Alluvium (Regosols)</b>	<b>1801</b>	<b>2.7</b>
<b>Sandy Lacustrine</b>	<b>9566</b>	<b>14.2</b>
<b>Sand and Gravel (Gleysols)</b>	<b>82</b>	<b>0.1</b>
<b>Sand and Gravel</b>	<b>1096</b>	<b>1.6</b>
<b>Water</b>	<b>58</b>	<b>0.1</b>
<b>Total</b>	<b>67233</b>	<b>100.0</b>

<sup>1</sup> Based on the **dominant** soil series for each soil polygon.

## Generalized Soil Map



### Soil Drainage Map.

Drainage is described on the basis of actual moisture content in excess of field capacity, and the length of the saturation period within the plant root zone. Five drainage classes plus three land classes are shown on this map.

**Very Poor** - Water is removed from the soil so slowly that the water table remains at or on the soil surface for the greater part of the time the soil is not frozen. Excess water is present in the soil throughout most of the year.

**Poor** - Water is removed so slowly in relation to supply that the soil remains wet for a large part of the time the soil is not frozen. Excess water is available within the soil for a large part of the time.

**Imperfect** - Water is removed from the soil sufficiently slowly in relation to supply to keep the soil wet for a significant part of the growing season. Excess water moves slowly down the profile if precipitation is the major source.

**Well** - Water is removed from the soil readily but not rapidly. Excess water flows downward readily into underlying materials or laterally as subsurface flow.

**Rapid** - Water is removed from the soil rapidly in relation to supply. Excess water flows downward if underlying material is pervious. Subsurface flow may occur on steep slopes during heavy rainfall.

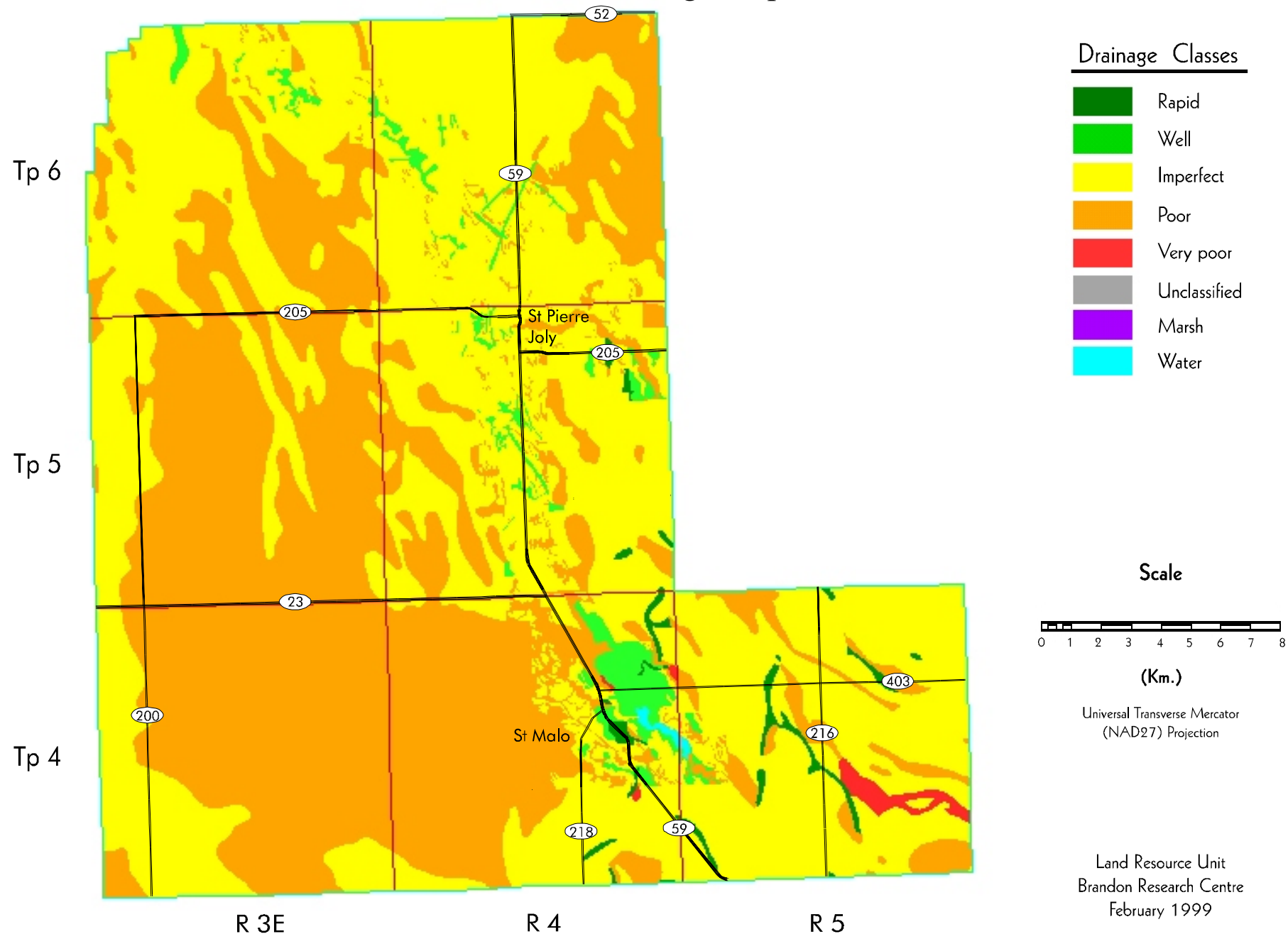
Drainage classification is based on the dominant soil series within each individual soil polygon.

**Table 3. Drainage Classes<sup>1</sup>**

<b>Drainage Class</b>	<b>Area (ha)</b>	<b>Percent of RM</b>
<b>Very Poor</b>	<b>312</b>	<b>0.5</b>
<b>Poor</b>	<b>28668</b>	<b>42.6</b>
<b>Imperfect</b>	<b>36213</b>	<b>53.9</b>
<b>Well</b>	<b>1443</b>	<b>2.1</b>
<b>Rapid</b>	<b>538</b>	<b>0.8</b>
<b>Marsh</b>	<b>0</b>	<b>0.0</b>
<b>Unclassified</b>	<b>0</b>	<b>0.0</b>
<b>Water</b>	<b>58</b>	<b>0.1</b>
<b>Total</b>	<b>67233</b>	<b>100.0</b>

<sup>1</sup> Area has been assigned to the dominant drainage class for each soil polygon.

## Soil Drainage Map



### Management Considerations Map.

Management consideration maps are provided to focus on awareness of land resource characteristics important to land use. This map does not presume a specific land use. Rather it portrays the most common and wide spread attributes that apply to most soil landscapes in the province.

These maps **highlight attributes** of soil-landscapes that the land manager must consider for any intended land use.

- **Fine texture**
- **Medium texture**
- **Coarse texture**
- **Topography**
- **Wetness**
- **Organic**
- **Bedrock**

**F = Fine texture** - soil landscapes with **fine textured soils (clays and silty clays)**, and thus low infiltration and internal permeability rates. These require special considerations to mitigate surface ponding (water logging), runoff, and trafficability. Timing and type of tillage practices used may be restricted.

**M = Medium texture** - soil landscapes with medium to moderately fine textures (**loams to clay loams**), and good water and nutrient retention properties. Good management and cropping practices are required to minimize leaching and the risk of erosion.

**C = Coarse texture** - soil landscapes with **coarse to very coarse textured soils (loamy sands, sands and gravels)**, have a high permeability throughout the profile, and require special management practices related to application of agricultural chemicals, animal wastes, and municipal effluent to protect and sustain the long term quality of the soil and water resources. The risk of soil erosion can be minimized through the use of shelterbelts and maintenance of crop residues.

**T = Topography** - soil landscapes with **slopes greater than 5 %** are steep enough to require special management practices to minimize the risk of erosion.

**W = Wetness** - soil landscapes that have **poorly drained soils and/or >50 % wetlands** (due to seasonal and annual flooding, surface ponding, permanent water bodies (sloughs), and/or high water tables), require special management practices to mitigate adverse impact on water quality, protect subsurface aquifers, and sustain crop production during periods of high risk of water logging.

**O = Organic** - soil landscapes with organic soils, requiring special management considerations of drainage, tillage, and cropping to sustain productivity and minimize subsidence and erosion.

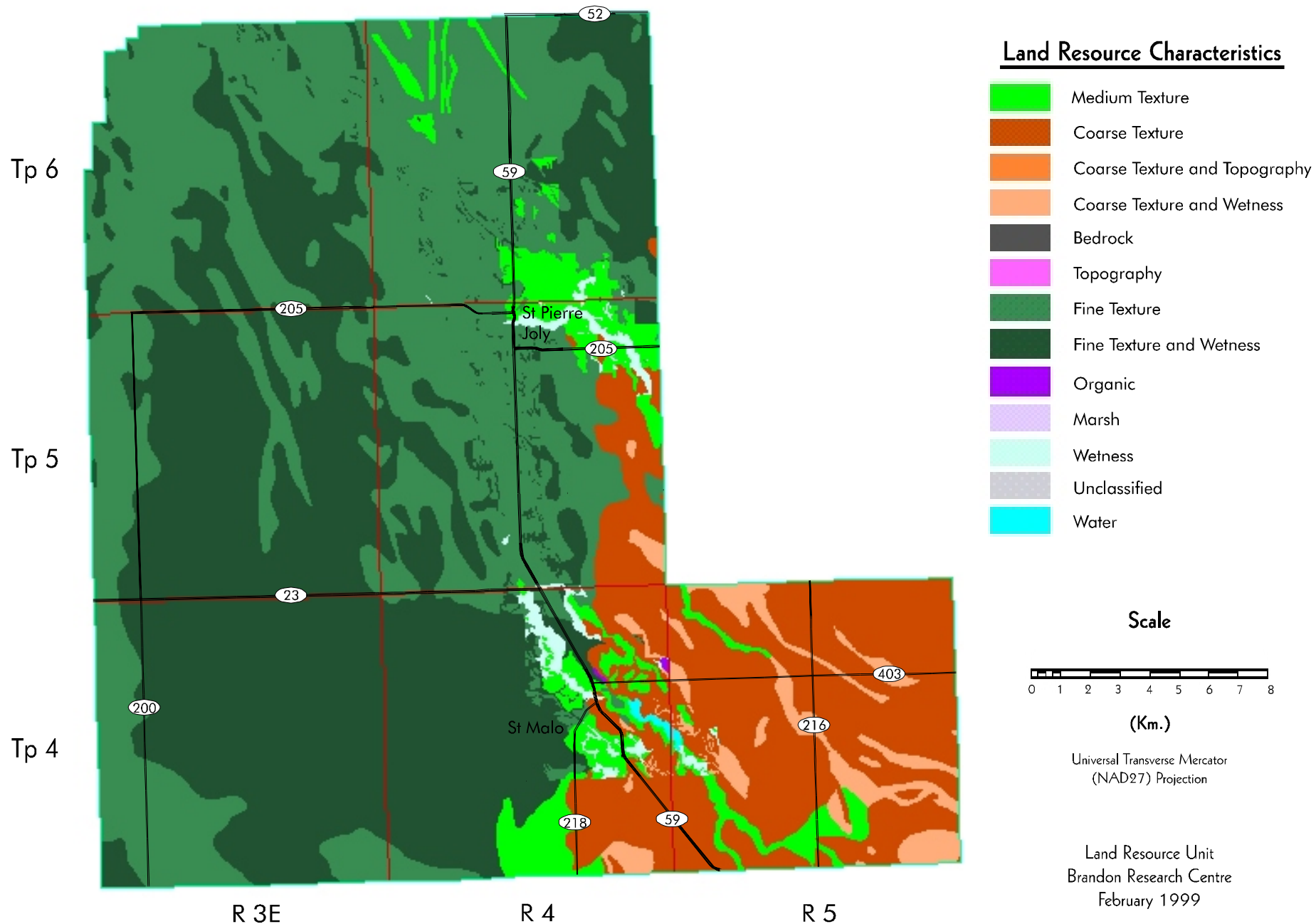
**R = Bedrock** - soil landscapes that have **shallow depth to bedrock (< 50 cm) and/or exposed bedrock** which may prevent the use of some or all tillage practices as well as the range of potential crops. They require special cropping and management practices to sustain agricultural production.

**Table 4. Management Considerations<sup>1</sup>**

Land Resource Characteristics	Area (ha)	Percent of RM
<b>Fine Texture</b>	<b>23908</b>	<b>35.6</b>
<b>Fine Texture and Wetness</b>	<b>26380</b>	<b>39.2</b>
<b>Fine Texture and Topography</b>	<b>0</b>	<b>0.0</b>
<b>Medium Texture</b>	<b>3624</b>	<b>5.4</b>
<b>Coarse Texture</b>	<b>10662</b>	<b>15.9</b>
<b>Coarse Texture and Wetness</b>	<b>1913</b>	<b>2.8</b>
<b>Coarse Texture and Topography</b>	<b>0</b>	<b>0.0</b>
<b>Topography</b>	<b>0</b>	<b>0.0</b>
<b>Bedrock</b>	<b>0</b>	<b>0.0</b>
<b>Wetness</b>	<b>667</b>	<b>1.0</b>
<b>Organic</b>	<b>20</b>	<b>0.0</b>
<b>Marsh</b>	<b>0</b>	<b>0.0</b>
<b>Unclassified</b>	<b>0</b>	<b>0.0</b>
<b>Water</b>	<b>58</b>	<b>0.1</b>
<b>Total</b>	<b>67233</b>	<b>100.0</b>

<sup>1</sup> Based on the **dominant** soil series and slope gradient within each polygon.

## Management Considerations Map





### Agricultural Capability Map.

This evaluation utilizes the 7 class Canada Land Inventory system (CLI, 1965). Classes 1 to 3 represent the prime agricultural land, class 4 land is marginal for sustained cultivation, class 5 land is capable of perennial forages and improvement is feasible, class 6 land is capable of producing native forages and pasture but improvement is not feasible, and class 7 land is considered unsuitable for dryland agriculture. Subclass modifiers include structure and/or permeability (D), erosion (E), inundation (I), moisture limitation (M), salinity (N), stoniness (P), consolidated bedrock (R), topography (T), excess water (W) and cumulative minor adverse characteristics (X).

This generalized interpretive map is based on the dominant soil series and phases for each soil polygon. The CLI subclass limitations cannot be portrayed at this generalized map scale.

**Table 5. Agricultural Capability<sup>1</sup>**

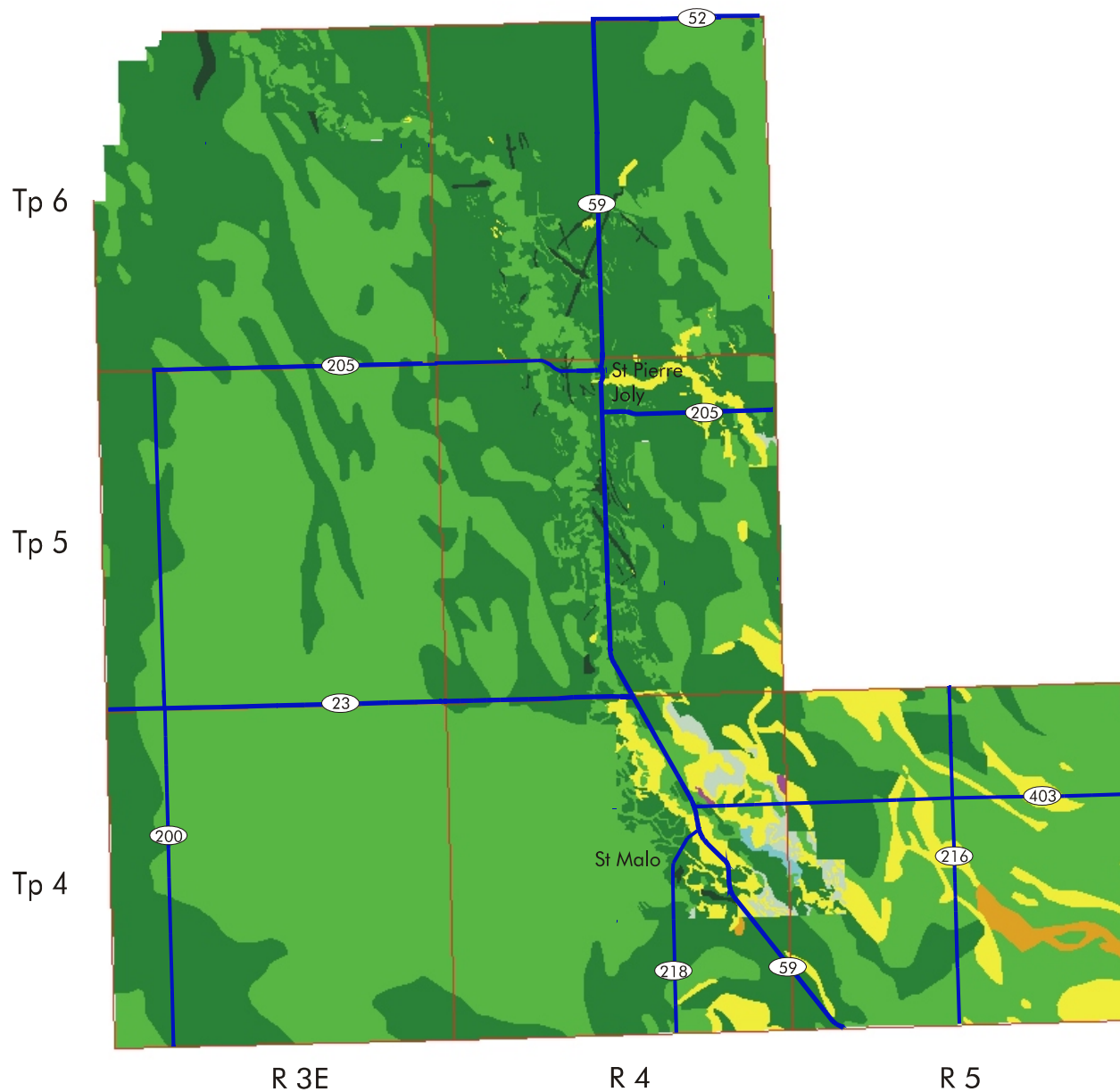
<b>Class Subclass</b>	<b>Area (ha)</b>	<b>Percent of RM</b>
<b>1</b>	<b>318</b>	<b>0.5</b>
<b>2</b>	<b>28430</b>	<b>42.2</b>
2D	303	0.5
2DW	54	0.1
2I	38	0.1
2M	954	1.4
2MP	3353	5.0
2W	23626	35.1
2X	102	0.2

**Table 5. Agricultural Capability<sup>1</sup>(cont)**

<b>Class Subclass</b>	<b>Area (ha)</b>	<b>Percent of RM</b>
<b>3</b>	<b>34658</b>	<b>51.5</b>
3D	377	0.6
3I	1371	2.0
3M	1549	2.3
3MI	397	0.6
3N	170	0.3
3NW	49	0.1
3P	4559	6.8
3W	26185	39.1
<b>4</b>	<b>362</b>	<b>0.5</b>
4DP	144	0.2
4M	218	0.3
<b>5</b>	<b>3218</b>	<b>4.8</b>
5M	854	1.3
5MP	23	0.0
5W	1927	2.9
5WI	414	0.6
<b>6</b>	<b>292</b>	<b>0.4</b>
6W	292	0.4
<b>Water</b>	<b>59</b>	<b>0.1</b>
<b>Organic</b>	<b>20</b>	<b>0.0</b>
<b>Total</b>	<b>67357</b>	<b>100.0</b>

<sup>1</sup> Based on the **dominant** soil series and slope gradient within each polygon.

## Agriculture Capability Map



### Canada Land Inventory Classes

-  Class 1
-  Class 2
-  Class 3
-  Class 4
-  Class 5
-  Class 6
-  Class 7
-  Organic
-  Unclassified
-  Water

### Scale



(Km.)

Universal Transverse Mercator  
(NAD27) ProjectionLand Resource Unit  
Winnipeg Manitoba  
June 2003

### Irrigation Suitability Map.

Irrigation ratings are based on an assessment of the most limiting combination of soil and landscape conditions. Soils in the same class have a similar relative suitability or degree of limitation for irrigation use, although the specific limiting factors may differ. These limiting factors are described by subclass symbols at detailed map scales. The irrigation rating system does not consider water availability, method of application, water quality, or economics of irrigated land use.

Irrigation suitability is a four class rating system. Areas with no or slight soil and/or landscape limitations are rated **Excellent** to **Good** and can be considered irrigable. Areas with moderate soil and/or landscape limitations are rated as **Fair** and considered marginal for irrigation providing adequate management exists so that the soil and adjacent areas are not adversely affected by water application. Soil and landscape areas rated as **Poor** have severe limitations for irrigation.

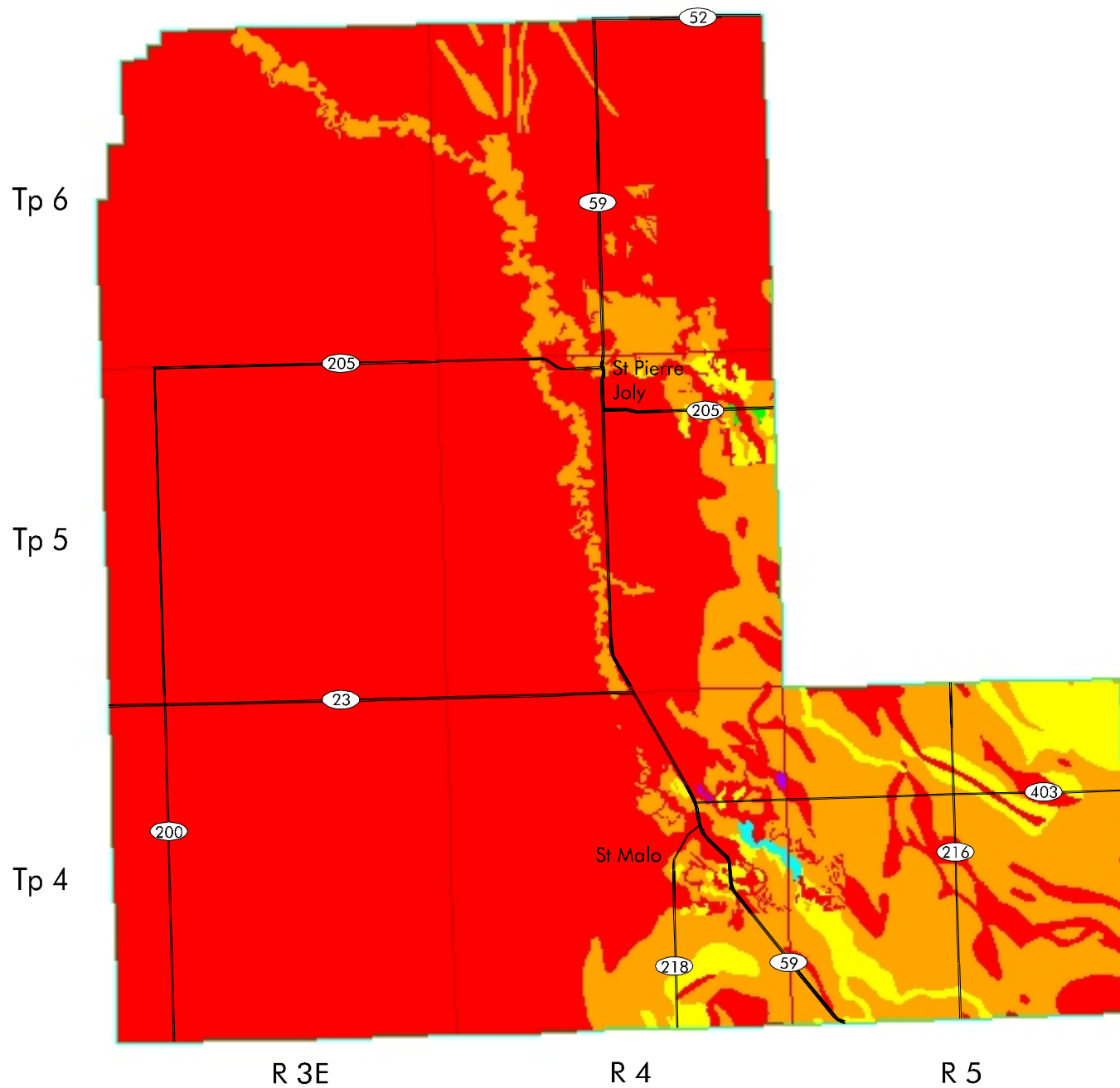
This generalized interpretive map is based on the dominant soil series for each soil polygon, in combination with the dominant slope class. The nature of the subclass limitations and the classification of subdominant components is not shown at this generalized map scale.

**Table 6. Irrigation Suitability<sup>1</sup>**

<b>Class</b>	<b>Area (ha)</b>	<b>Percent of RM</b>
<b>Excellent</b>	<b>19</b>	<b>0.0</b>
<b>Good</b>	<b>2298</b>	<b>3.4</b>
<b>Fair</b>	<b>12391</b>	<b>18.4</b>
<b>Poor</b>	<b>52446</b>	<b>78.0</b>
<b>Organic</b>	<b>20</b>	<b>0.0</b>
<b>Unclassified</b>	<b>0</b>	<b>0.0</b>
<b>Water</b>	<b>58</b>	<b>0.1</b>
<b>Total</b>	<b>67233</b>	<b>100.0</b>

<sup>1</sup> Based on the **dominant** soil series and slope gradient within each polygon.

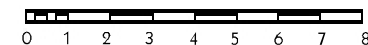
## Irrigation Suitability Map



### Irrigation Suitability Classes



### Scale



(Km.)

Universal Transverse Mercator  
(NAD27) ProjectionLand Resource Unit  
Brandon Research Centre  
February 1999

**Potential Environmental Impact Under Irrigation Map.**

A major environmental concern for land under irrigated crop production is the possibility that surface and/or ground water may be impacted. The potential environmental impact assessment provides a relative rating of land into 4 classes (minimal, low, moderate and high) based on an evaluation of specific soil factors and landscape conditions that determine the impact potential.

Soil factors considered are those properties that determine water retention and movement through the soil; topographic features are those that affect runoff and redistribution of moisture in the landscape. Several factors are specifically considered: soil texture, hydraulic conductivity, salinity, geological uniformity, depth to water table and topography. The risk of altering surface and subsurface soil drainage regimes, soil salinity, potential for runoff, erosion and flooding is determined by specific criteria for each property.

Use of this rating is intended to serve as a warning of potential environmental concern. It may be possible to design and/or give special consideration to soil-water-crop management practices that will mitigate any adverse impact.

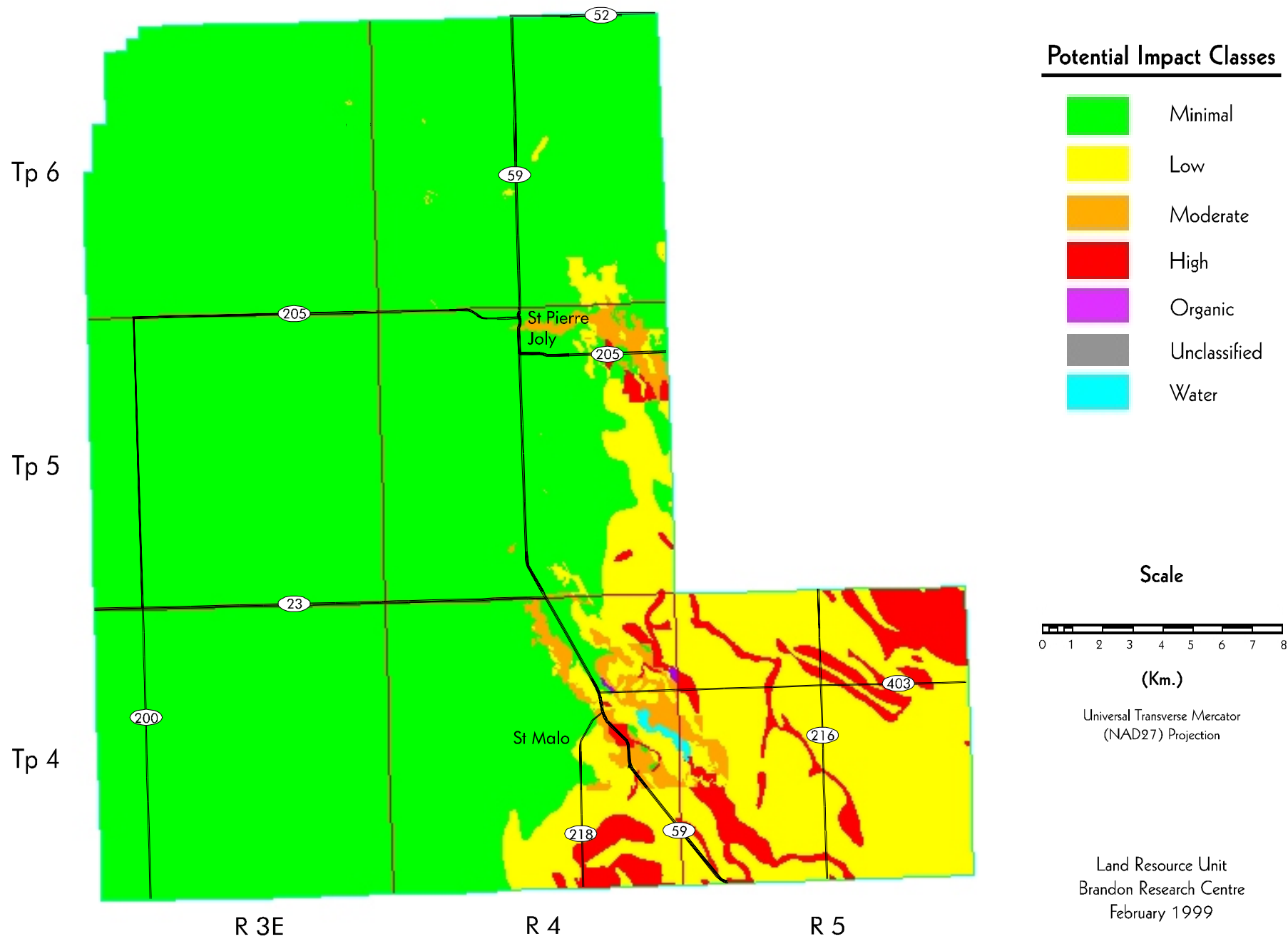
This generalized interpretive map is based on the dominant soil series and slope class for each soil polygon. The nature of the subclass limitations, and the classification of subdominant components is not shown at this generalized map scale.

**Table 7. Potential Environmental Impact Under Irrigation<sup>1</sup>**

<b>Class</b>	<b>Area (ha)</b>	<b>Percent of RM</b>
<b>Minimal</b>	<b>51434</b>	<b>76.5</b>
<b>Low</b>	<b>11628</b>	<b>17.3</b>
<b>Moderate</b>	<b>1290</b>	<b>1.9</b>
<b>High</b>	<b>2803</b>	<b>4.2</b>
<b>Organic</b>	<b>20</b>	<b>0.0</b>
<b>Unclassified</b>	<b>0</b>	<b>0.0</b>
<b>Water</b>	<b>58</b>	<b>0.1</b>
<b>Total</b>	<b>67233</b>	<b>100.0</b>

<sup>1</sup> Based on the **dominant** soil series and slope gradient within each polygon.

## Potential Environmental Impact Under Irrigation



**Water Erosion Risk Map.**

The risk of water erosion was estimated using the universal soil loss equation (USLE) developed by Wischmeier and Smith (1965). The USLE predicted soil loss (tons/hectare/year) is calculated for each soil component in each soil map polygon. Erosion risk classes are assigned based on the weighted average soil loss for each map polygon. Water erosion risk factors include mean annual rainfall, slope length, slope gradient, vegetation cover, management practices, and soil erodibility. The map shows 5 classes of soil erosion risk based on bare unprotected soil:

**negligible**  
**low**  
**moderate**  
**high**  
**severe**

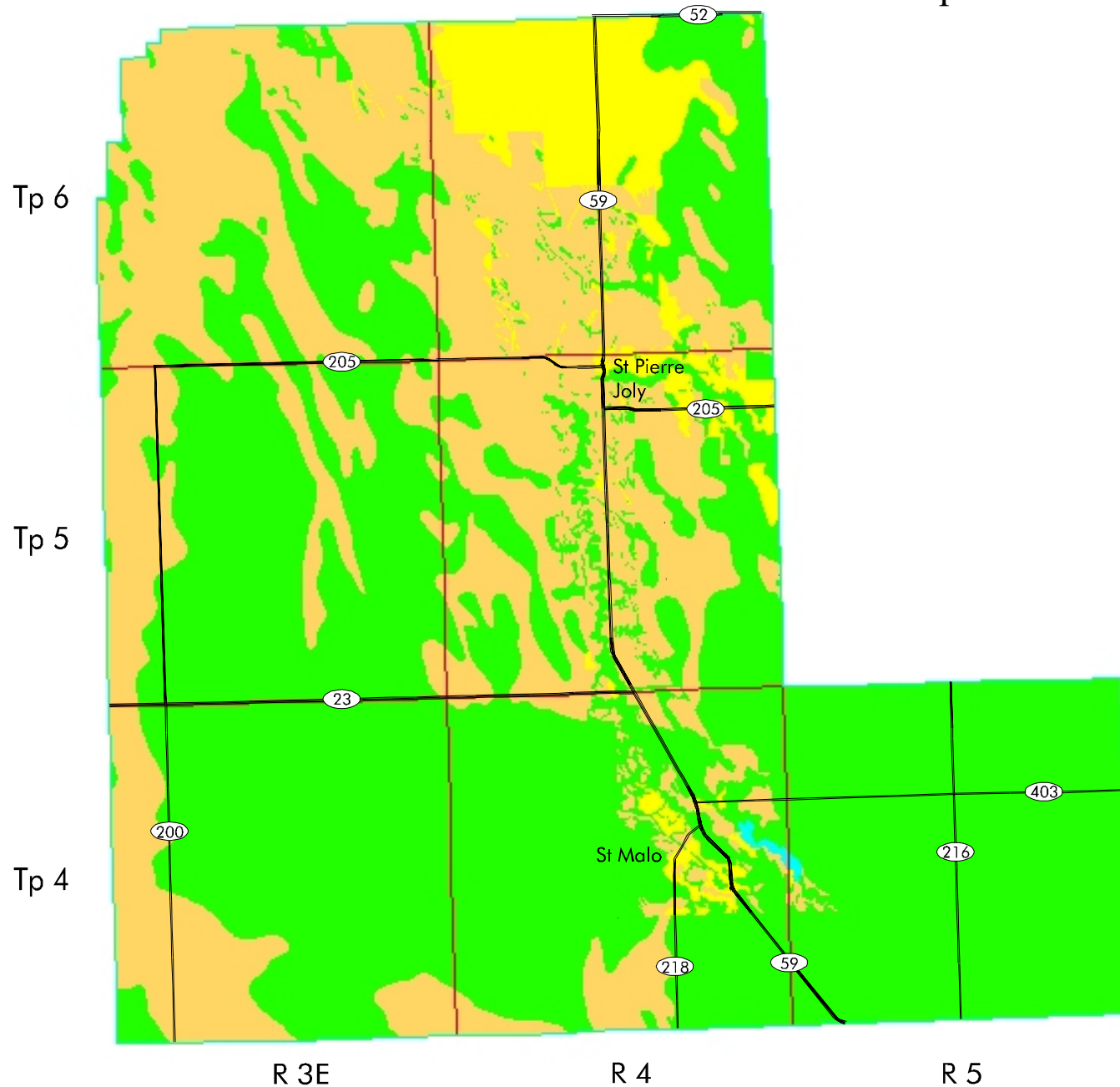
Cropping and residue management practices will significantly reduce this risk depending on crop rotation program, soil type, and landscape features.

**Table 8. Water Erosion Risk<sup>1</sup>**

<b>Class</b>	<b>Area (ha)</b>	<b>Percent of RM</b>
<b>Negligible</b>	<b>40739</b>	<b>60.6</b>
<b>Low</b>	<b>22191</b>	<b>33.0</b>
<b>Moderate</b>	<b>4244</b>	<b>6.3</b>
<b>High</b>	<b>0</b>	<b>0.0</b>
<b>Severe</b>	<b>0</b>	<b>0.0</b>
<b>Unclassified</b>	<b>0</b>	<b>0.0</b>
<b>Water</b>	<b>58</b>	<b>0.1</b>
<b>Total</b>	<b>67233</b>	<b>100.0</b>

<sup>1</sup> Based on the **weighted average** USLE predicted soil loss within each polygon, assuming a bare unprotected soil.

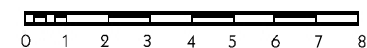
## Water Erosion Risk Map



### Mean Risk Values



### Scale



(Km.)

Universal Transverse Mercator  
(NAD27) Projection

Land Resource Unit  
Brandon Research Centre  
February 1999



**Land Use Map.**

The land use classification of the RM has been interpreted from LANDSAT satellite imagery, using supervised computer classification techniques. Many individual spectral signatures were classified and grouped into the seven general land use classes shown here. Although land use changes over time, and some land use practices on individual parcels may occasionally result in similar spectral signatures, this map provides a general representation of the current land use in the RM.

The following is a brief description of the land use classes:

**Annual Crop Land** - land that is normally cultivated on an annual basis.

**Forage** - perennial forages, generally alfalfa or clover with blends of tame grasses.

**Grasslands** - areas of native or tame grasses, may contain scattered stands of shrubs.

**Trees** - lands that are primarily in tree cover.

**Wetlands** - areas that are wet, often with sedges, cattails, and rushes.

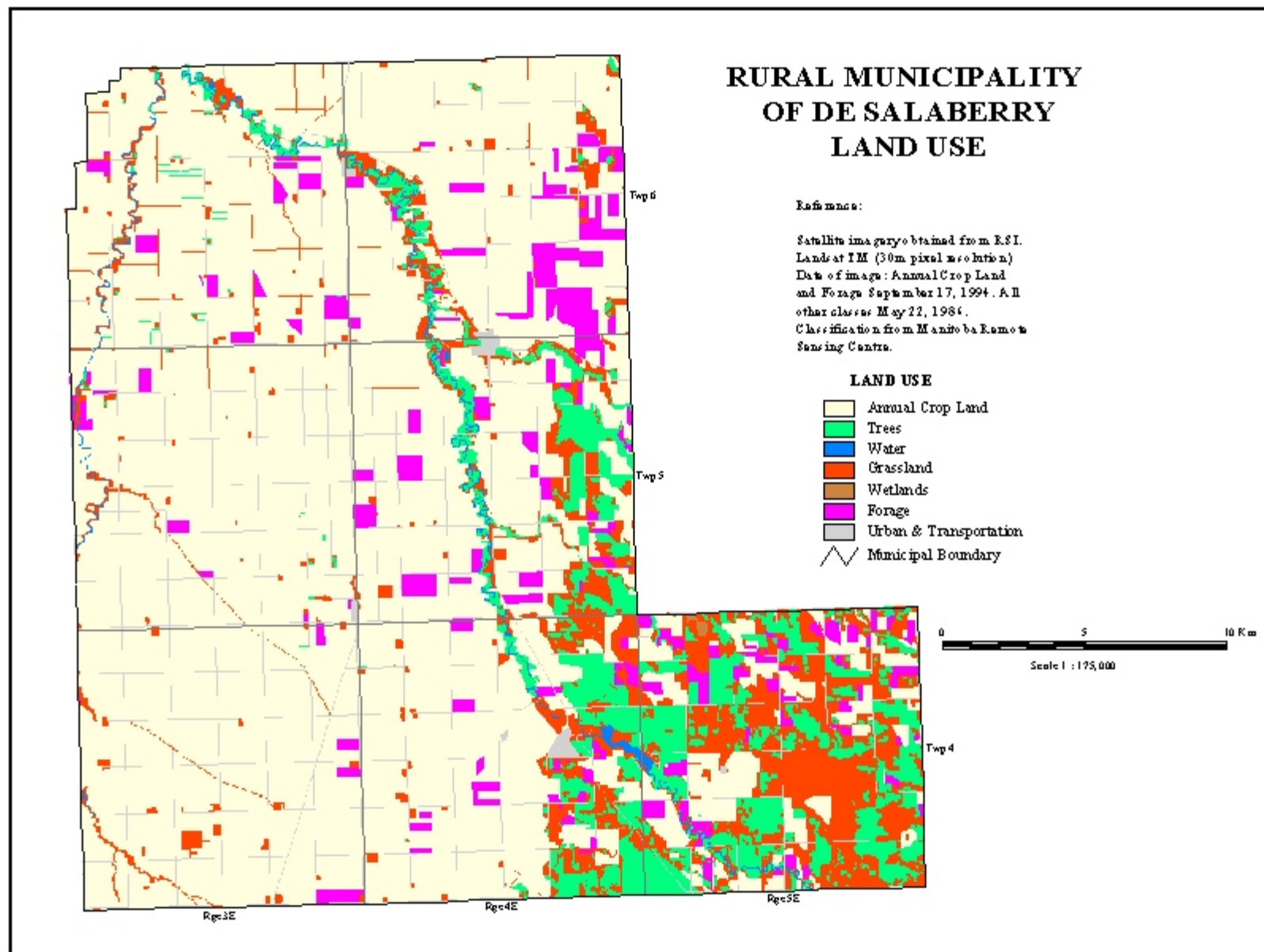
**Water** - open water - lakes, rivers streams, ponds, and lagoons.

**Urban and Transportation** - towns, roads, railways, quarries.

**Table 9. Land Use<sup>1</sup>**

<b>Class</b>	<b>Area (ha)</b>	<b>Percent of RM</b>
<b>Annual Crop Land</b>	<b>47598</b>	<b>70.6</b>
<b>Forage</b>	<b>3557</b>	<b>5.3</b>
<b>Grasslands</b>	<b>7460</b>	<b>11.1</b>
<b>Trees</b>	<b>6034</b>	<b>9.0</b>
<b>Wetlands</b>	<b>28</b>	<b>0.0</b>
<b>Water</b>	<b>485</b>	<b>0.7</b>
<b>Urban and transportation</b>	<b>2252</b>	<b>3.3</b>
<b>Total</b>	<b>67414</b>	<b>100.0</b>

<sup>1</sup> Land use information (1995) and map supplied by Prairie Farm Rehabilitation Administration. Areas may vary from previous maps due to differences in analytical procedures.



**REFERENCES**

Agronomic Interpretations Working Group. 1995. Land Suitability Rating System for Agricultural Crops: 1. Spring-seeded Small Grains. Edited by W.W. Pettapiece. Tech. Bull. 1995-6E. Centre for Land and Biological Resources Research, Agriculture and Agri-Food Canada, Ottawa. 90 pages, 2 maps.

Ash, G.H.B. 1991. An Agroclimatic Risk Assessment of Southern Manitoba and Southeastern Saskatchewan. M.A. Thesis. Department of Geography, University of Manitoba, Winnipeg.

Canada Land Inventory. 1965. Soil Capability Classification for Agriculture. Canada Land Inventory Report No. 2. ARDA, Dept. of Forestry, Canada, Ottawa.

Canada-Manitoba Soil Survey. 1980. Physiographic Regions of Manitoba. Ellis Bldg., University of Manitoba, Winnipeg. Revised. Unpublished Report.

Canada-Manitoba Soil Survey. 1979. Ecological Regions and Subregions in Manitoba. Ellis Bldg., University of Manitoba, Winnipeg. Revised. Unpublished Report.

Ehrlich, W.A., Poyser, E.A. Pratt, L.E. and Ellis, J. H. 1953 Report of Reconnaissance Soil Survey of Winnipeg and Morris Map Sheet Areas. Soils Report No. 5. Manitoba Soil Survey. Published by Manitoba Dept. of Agriculture. 111pp and 2 maps.

Environment Canada. 1982. Canadian Climatic Normals 1951-1980. Frost, Vol. 6; Atmospheric Environment, Downsview, Ontario.

Environment Canada. 1993. Canadian Climatic Normals 1961-1990. Prairie Provinces. Atmospheric Environment, Downsview, Ontario.

Irrigation Suitability Classification Working Group. 1987. An Irrigation Suitability Classification System for the Canadian Prairies. LRRC contribution no. 87-83, Land Resource Research Centre, Research Branch, Agriculture Canada, Ottawa

Land Resource Unit. 1998. Soil and Terrain Classification System Manual. In preparation. Ellis Bldg. University of Manitoba. Winnipeg.

MacDonald, K.B., and Valentine, K.W.G. 1992. CanSIS Manual 1 CanSIS/NSDB: A General Description. Land Resource Division, Centre for Land and Biological Resources Research, Research Branch, Agriculture Canada, Ottawa.

Michalyna, W., Gardiner, Wm. and Podolsky, G., 1975. Soils of the Winnipeg Region Study Area. Report D14. Canada-Manitoba Soil Survey. Winnipeg.

Soil Classification Working Group. 1998. The Canadian System of Soil Classification. Third Edition. Publ. No. 1646. Research Branch, Agriculture and Agri-Food Canada.

Wischmeier, W.H. and Smith, D.D. 1965. Predicting Rainfall-erosion Loss from Cropland East of the Rocky Mountains. U.S. Department of Agriculture, Agriculture Handbook No. 282, U.S. Government Printing Office, Washington, D.C.