



Agriculture and  
Agri-Food Canada

Agriculture et  
Agroalimentaire Canada

**Rural Municipality of East St Paul**


**Information Bulletin 99-6**

## **Soils and Terrain**

An introduction  
to the land resource

Land Resource Unit  
Brandon Research Centre



Canada 

## **Rural Municipality of East St Paul**

### **Information Bulletin 99-6**

Prepared by:

Land Resource Unit,  
Brandon Research Centre, Research Branch,  
Agriculture and Agri-Food Canada.

Department of Soil Science, University of Manitoba.

Manitoba Soil Resource Section,  
Soils and Crops Branch, Manitoba Agriculture.

Printed October, 1999

## PREFACE

This is one of a new series of information bulletins for individual rural municipalities of Manitoba. They serve to introduce the newly developed digital soil databases and illustrate several typical derived and interpretive map products for agricultural land use planning applications. The bulletins will also be available in diskette format for each rural municipality.

Information contained in this bulletin may be quoted and utilized with appropriate reference to the originating agencies. The authors and originating agencies assume no responsibility for the misuse, alteration, re-packaging, or re-interpretation of the information.

This information bulletin serves as an introduction to the land resource information available for the municipality. More detailed information, including copies of the primary soil and terrain maps at larger scales, may be obtained by contacting

Land Resource Unit  
Room 360 Ellis Bldg, University of Manitoba  
Winnipeg, Manitoba R3T 2N2  
Phone: 204-474-6118 FAX: 204-474-7633

## CITATION

Land Resource Unit, 1999. Soils and Terrain. An Introduction to the Land Resource. Rural Municipality of East St Paul. Information Bulletin 99-6, Brandon Research Centre, Research Branch, Agriculture and Agri-Food Canada

## ACKNOWLEDGMENTS

Continuing support for this project has been provided by Brandon Research Centre and PFRA Manitoba. The project was initiated by the Land Resource Unit under the Canada-Manitoba Agreement of Agricultural Sustainability.

The following individuals and agencies contributed significantly to the compilation, interpretation, and derivation of the information contained in this report.

Managerial and administrative support was provided by:

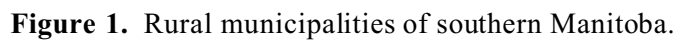
R.G. Eilers, Head, Land Resource Unit, Brandon Research Centre, Research Branch, Agriculture and Agri-Food Canada.  
G.J. Racz, Head, Department of Soil Science, University of Manitoba.

Technical support was provided by:

G.W. Lelyk, and P. Cyr, Land Resource Unit, Brandon Research Centre, Research Branch, Agriculture and Agri-Food Canada.  
J. Fitzmaurice, and A. Waddell, Department of Soil Science, University of Manitoba.  
G.F. Mills, P. Ag, Winnipeg, Manitoba  
J. Griffiths, and C. Aglugub, Soil Resource Section, Soils and Crops Branch, Manitoba Agriculture.  
R. Lewis, PFRA, Agriculture and Agri-Food Canada.

Professional expertise for data conversion, correlation, and interpretation was provided by:

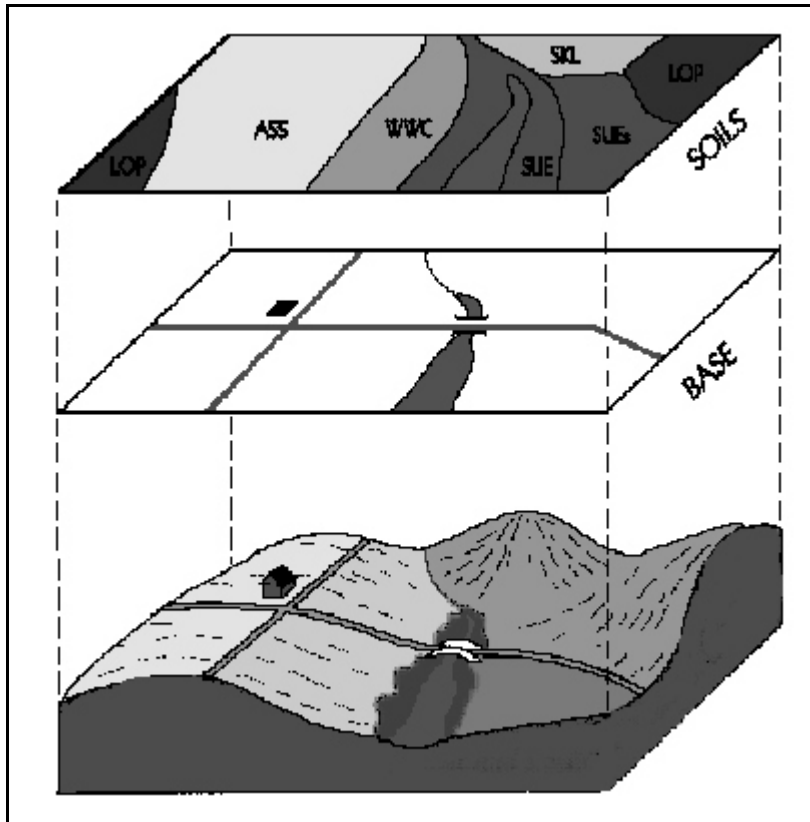
W.R. Fraser and R.G. Eilers, Land Resource Unit, Brandon Research Centre, Research Branch, Agriculture and Agri-Food Canada.  
P. Haluschak and G. Podolsky, Soil Resource Section, Soils and Crops Branch, Manitoba Agriculture.



This bulletin is available in printed or digital format. The digital bulletin is a Windows based executable file which offers additional display options, including the capability to print any portion of the bulletin.

## LAND RESOURCE DATA

The soil and terrain information presented in this bulletin was compiled as part of a larger project to provide a uniform level of land resource information for agricultural and regional planning purposes throughout Agro-Manitoba. This information was compiled and analysed in two distinct layers as shown in Figure 2.



**Figure 2.** Soil and Base Map data.

## Base Layer

Digital base map information includes the municipality and township boundaries, along with major streams, roads and highways. Major rivers and lakes from the base layer were also used as common boundaries for the soil map layer. Water bodies larger than 25 ha in size were digitized as separate polygons.

## Soil Layer

The most detailed soil information currently available was selected as the data source for the digital soil layer for each rural municipality.

Comprehensive detailed soil maps (1:20 000 to 1:50 000 scale) have been published for many rural municipalities. Where they were available, the individual soil map sheets were digitized and compiled as a single georeferenced layer to match the digital RM base. Map polygons have one or more soil series components, as well as slope and stoniness classes. Soil database information was produced for each polygon, to meet national standards (MacDonald and Valentine, 1992). Slope length classes were also added, based on photo-interpretation.

Older, reconnaissance scale soil maps (1:126 720 scale) represented the only available soil data source for many rural municipalities. These maps were compiled on a **soil association** basis, in which soil landscape patterns were identified with unique surficial geological deposits and textures. Each soil association consists of a range of different soils ("associates") each of which occurs in a repetitive position in the landscape. Modern soil series that best represent the soil association were identified for each soil polygon. The soil and modifier codes provide a link to additional databases of soil properties. In this way, both detailed and reconnaissance soil map polygons were related to soil drainage, surface texture, and other soil properties to produce various interpretive maps. Slope length classes were also added, based on photo-interpretation.

## SOIL AND TERRAIN OVERVIEW

The Rural Municipality (RM) of East St. Paul covers an area of 4,344 ha (approximately one-half township) in southern Manitoba. It extends north of the City of Winnipeg for a distance of 8 kilometres, encompassing the river lots along the east side of the Red River (page 3). Birds Hill is the largest population centre although the early settlement pattern close to the Red River is under pressure from a population desiring a larger living space. Expansion of low-density rural residential development over the last two decades has shifted land use away from agriculture.

The climate in the municipality can be related to weather data from Winnipeg International Airport. The mean annual temperature is 2.4°C and the mean annual precipitation is 504 mm (Environment Canada, 1993). The average frost-free period is 118 days and the average degree-days above 5°C accumulated from May to September are 1697 (Ash, 1991). An evaluation of growing conditions in this region of Manitoba can be related to estimates of seasonal moisture deficit and effective growing degree-days (EGDD) above 5°C. The seasonal moisture deficit calculated between May and September is slightly less than 250 mm and the estimated effective growing degree-days accumulated from May to September average slightly above 1600 (Agronomic Interpretations Working Group, 1995). These parameters provide an indication of moisture and heat energy available for crop growth and are generally adequate to support a wide range of crops adapted to western Canada.

Physiographically, the RM of East St. Paul is located in the northern portion of the Red River Valley (Canada-Manitoba Soil Survey, 1980). The area is generally flat with slopes less than 2 percent (page 9). Elevation of the land surface decreases very gradually from 237 metres above sea level (m asl) in the south to about 225 m asl in the north. The low surface gradients of 1.5 m/km (6 ft/mi) result in very slow surface drainage, mainly through a network of man-made ditches to the Red River.

Soil materials in this municipality were deposited during the time of glacial Lake Agassiz and consist primarily of deep, clayey lacustrine

sediments. A portion of Birds Hill, a prominent irregular hill of sand and gravel glaciofluvial deposits and glacial till is located on the eastern edge of the municipality. Thin clay deposits underlain by stony, loamy glacial till occur along the west side of Birds Hill. A narrow band of variable textured alluvium is associated with the channel containing the Red River. Surface texture in the municipality is dominantly clayey (page 11).

Soils in the municipality have been mapped at a detailed 1:20 000 scale (Michalyna et al., 1975). According to the Canadian System of Soil Classification (Soil Classification Working Group, 1998), the soils are classified as dominantly clayey textured Black Chernozems and Humic Gleysols of the Red River association. Dark Gray soils of the Pine Ridge association developed on deep sandy materials and the Semple association developed on thin clayey materials underlain by loam textured till occur in the Birds Hill area (page 11). Reconnaissance soil map information (1:126 720 scale) is available in the description of the Red River, Riverdale, Semple and Pine Ridge soil associations as published in the soil survey report for the Winnipeg and Morris map sheet areas (Ehrlich et al., 1953). A more detailed and complete description of the type, distribution and textural variability of soils in the municipality is provided in the published soil surveys for the area.

The generally flat topography throughout the Red River Valley and the high clay content of the soils results in the majority of the municipality being classified as imperfectly to poorly drained. However, local areas of well to rapidly drained soil are associated with the highly permeable sandy and gravelly deposits and sloping topography in the Birds Hill area (page 13).

The soils in this municipality are generally non-saline (page 15).

Management considerations are primarily related to heavy clay texture and wetness (page 17). Poorly drained soils throughout the municipality are subject to periodic flooding during spring runoff and following heavy precipitation. Minor relief features occur along the western slope of Birds Hill.

Most of the soils in the municipality are rated in **Class 2** (50 percent) and **Class 3** (41 percent) for agricultural capability with moderate to moderately severe limitations for agriculture (page 19). The soils are rated dominantly as **Poor** for irrigation suitability, primarily due to fine texture and poor drainage. About 1 percent of the area, mainly the alluvial soils along the Red River are rated as **Good** for irrigation suitability (page 21). The major problem limiting the agricultural use of soils is inadequate drainage. Unfavorable workability and potential degradation due to erosion by wind are other important limitations.

One of the issues currently receiving considerable attention is the sustainability of agricultural practices and their potential impact on the soil and groundwater environment. To assist in highlighting this concern to land planners and agricultural producers, an assessment of potential environmental impact (EI) under irrigation has been included in this bulletin (page 23). As shown, soils in the municipality are mainly at **Minimal** risk of degradation due mainly to the heavy texture of the soil and the slow drainage. These conditions reduce the risk for deep leaching of potential contaminants on the soil surface. The stratified alluvial soils along the Red River have coarser textured layers and are considered to have a **Low** risk of degradation while the coarser textured soils adjacent to Birds Hill have a risk for **High** impact on the environment under irrigation. This EI map is intended to be used in association with the irrigation suitability map.

Another issue of concern to producers, soil conservationists and land use specialists is soil erosion caused by agricultural cropping and tillage practices. Areas with potential for water erosion and where special practices should be adopted to mitigate this risk are shown on page 25. The risk for degradation due to water erosion is **Negligible** for 43 percent of the land in the municipality due to very flat topography, clayey texture and poor drainage. About 49 percent of the soils with clayey texture and imperfect drainage are considered to have a **Low** risk for water erosion. Management practices focus primarily on maintaining adequate crop residues to provide sufficient surface cover.

Land use in the RM of East St. Paul has shifted in recent years away from mainly agriculture to a mix of urban settlements, low-density rural-residential development, and small farm holdings. An assessment of the status of land use in 1995 was obtained through an analysis of satellite imagery. It showed that annual crops occupied about 35 percent of the land in the RM with forage production taking place on 1.5 percent of the area. Grassland areas associated with farmsteads, expanding residential subdivisions and the Winnipeg Floodway occupy nearly 39 percent of the area. Trees cover only 2 percent of the area, mainly in urbanized areas, shelterbelts on farmsteads and as remnants of the original forest cover along the Red River. Various non-agricultural uses such as infrastructure for urban areas, transportation and recreation occupy 19 percent of the municipality (page 27).

While the majority of soils in the RM of East St. Paul have moderate to moderately severe limitations for arable agriculture, the clayey textured soils require management practices which maintain adequate surface drainage, soil structure and tilth. All soils require careful management to protect against the risk of wind erosion. This includes leaving adequate crop residues on the surface to provide sufficient trash cover during the early spring period. The provision of shelter belts, minimum tillage practices, and crop rotations including forages will help to reduce the risk of soil degradation and maintain productivity.

A major portion of the municipality is characterized by low relief and a dominance of imperfectly to poorly drained clayey soils. This often results in drainage conditions which can adversely affect crop growth. These soils have slow to very slow permeability and are frequently saturated and subject to surface ponding and slow runoff, particularly during spring snowmelt or following heavy rains. Consequently, improvement and maintenance of water management infrastructure on a watershed or regional basis is required to reduce surface ponding while maintaining adequate soil moisture for crop growth. In addition, higher drainage standards are required for those parts of the municipality undergoing urban and rural-residential development.

## DERIVED AND INTERPRETIVE MAPS

A large variety of computer derived and interpretive maps can be generated from the digital soil and landscape databases. These maps are based on selected combinations of database values and assumptions.

**Derived maps** show information that is given in one or more columns in the computer map legend (such as soil drainage, soil salinity, or slope class).

**Interpretive maps** portray more complex land evaluations based on a combination of soil and landscape information. Interpretations are based on soil and landscape conditions in each polygon. Interpretative maps typically show land capabilities, suitabilities, or risks related to sustainability.

Several examples of derived and interpretive maps are included in this information bulletin:

### Derived Maps

Slope

Surface Texture

Drainage

Salinity

Management Considerations

### Interpretative Maps

Agricultural Capability

Irrigation Suitability

Potential Environmental Impact

Water Erosion Risk

Land Use

Digital databases derived from recent detailed soil inventories contain additional detailed information about significant inclusions of differing soil and slope conditions in each map polygon. This information can be portrayed at larger map scale than shown in this bulletin.

Information concerning particular interpretive maps, and the primary soil and terrain map data, can be obtained by contacting the Manitoba Soil Resource Section of Manitoba Agriculture, the local PFRA office, or the Manitoba Land Resource Unit.

The maps have all been reduced in size and generalized (simplified) in order to portray conditions for an entire rural municipality on one page. These generalized maps provide a useful overview of conditions within a municipality, but are not intended to apply to site specific land parcels. On-site evaluations are recommended for localized site specific land use suitability requirements.



**Slope Map.**

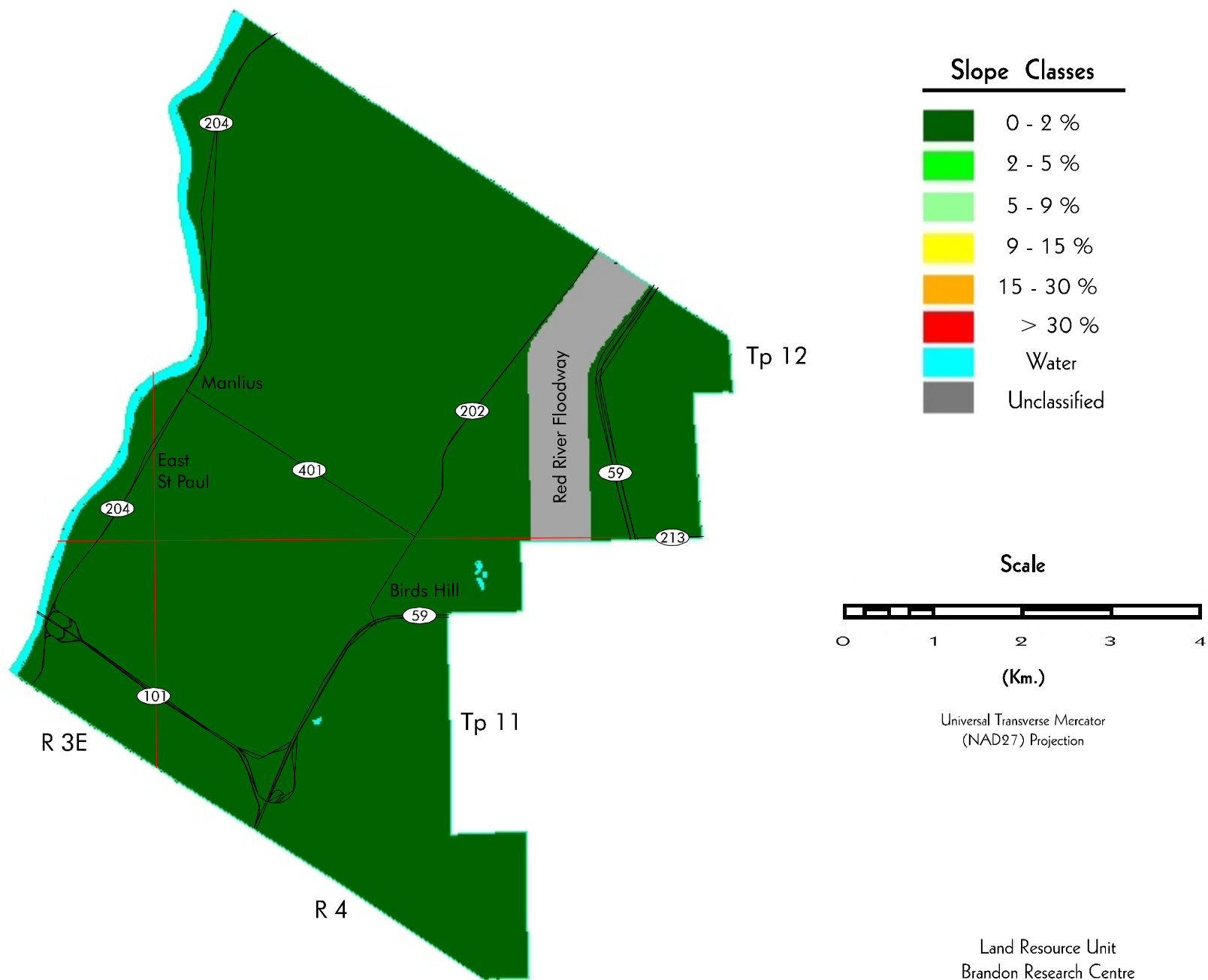
Slope describes the steepness of the landscape surface. The slope classes shown on this map are derived from the digital soil and terrain layer database. Specific colours are used to indicate the dominant slope class for each polygon in the RM. Additional slope classes may occur in each polygon area, but cannot be portrayed at this reduced map scale.

**Table 1. Slope Classes<sup>1</sup>**

<b>Slope Class</b>	<b>Area (ha)</b>	<b>Percent of RM</b>
<b>0 - 2 %</b>	<b>4043</b>	<b>93.1</b>
<b>2 - 5 %</b>	<b>0</b>	<b>0.0</b>
<b>5 - 9 %</b>	<b>0</b>	<b>0.0</b>
<b>9 - 15 %</b>	<b>0</b>	<b>0.0</b>
<b>15 - 30 %</b>	<b>0</b>	<b>0.0</b>
<b>&gt; 30 %</b>	<b>0</b>	<b>0.0</b>
<b>Unclassified</b>	<b>224</b>	<b>5.2</b>
<b>Water</b>	<b>78</b>	<b>1.8</b>
<b>Total</b>	<b>4344</b>	<b>100.0</b>

<sup>1</sup> Area has been assigned to the dominant slope in each soil polygon.

## Slope Map



**Surface Texture Map.**

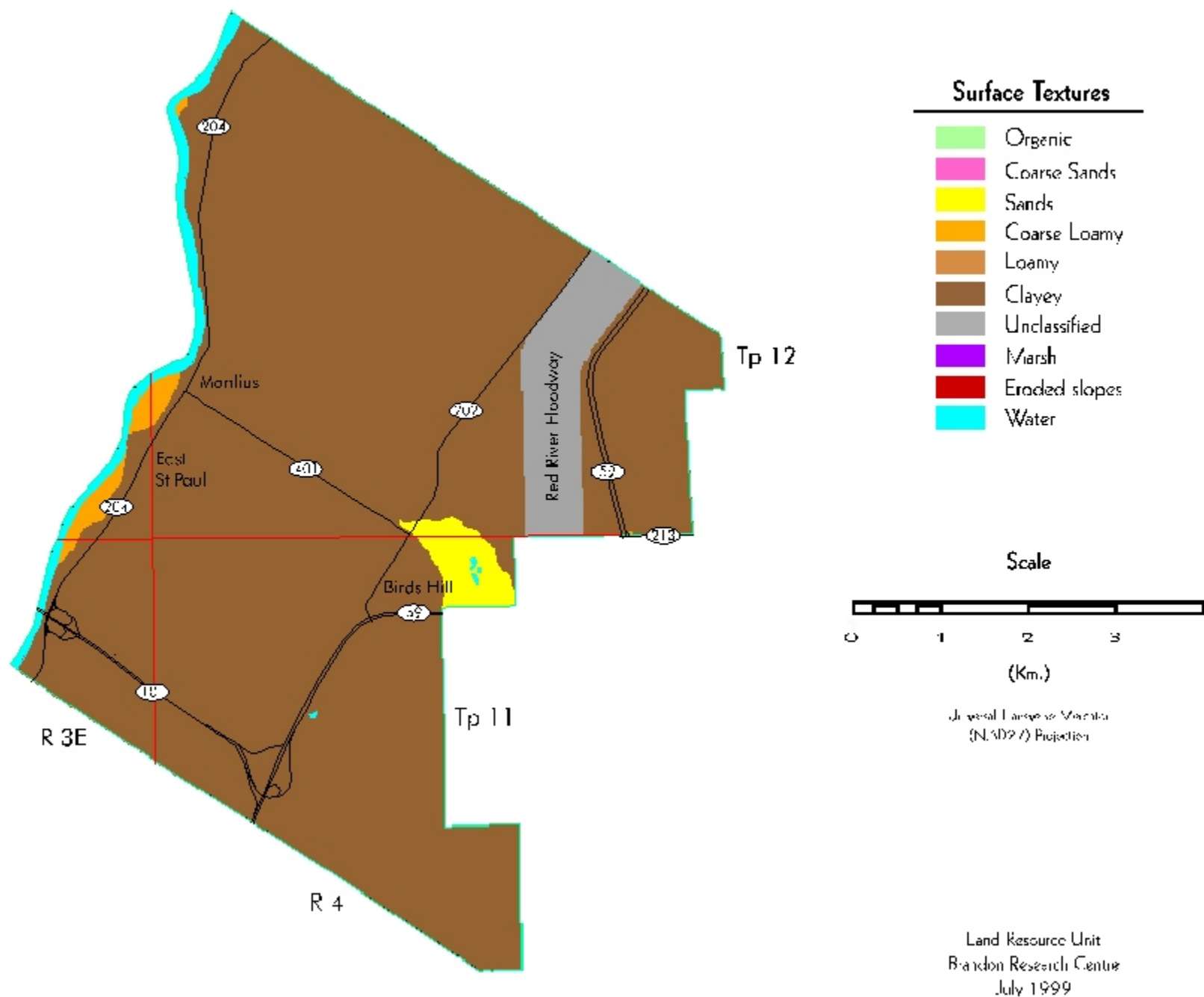
The soil textural class for the upper most soil horizon of the dominant soil series within a soil polygon was utilized for classification. Texture may vary from that shown with soil depth and location within the polygon.

**Table 2. Surface Texture<sup>1</sup>**

<b>Surface Texture</b>	<b>Area (ha)</b>	<b>Percent of RM</b>
<b>Organics</b>	<b>0</b>	<b>0.0</b>
<b>Coarse Sands</b>	<b>0</b>	<b>0.0</b>
<b>Sands</b>	<b>73</b>	<b>1.7</b>
<b>Coarse Loamy</b>	<b>46</b>	<b>1.1</b>
<b>Loamy</b>	<b>0</b>	<b>0.0</b>
<b>Clayey</b>	<b>3923</b>	<b>90.3</b>
<b>Eroded Slopes</b>	<b>0</b>	<b>0.0</b>
<b>Marsh</b>	<b>0</b>	<b>0.0</b>
<b>Unclassified</b>	<b>224</b>	<b>5.2</b>
<b>Water</b>	<b>78</b>	<b>1.8</b>
<b>Total</b>	<b>4344</b>	<b>100.0</b>

<sup>1</sup> Based on the **dominant** soil series for each soil polygon.

## Surface Texture Map



### Soil Drainage Map.

Drainage is described on the basis of actual moisture content in excess of field capacity, and the length of the saturation period within the plant root zone. Five drainage classes plus three land classes are shown on this map.

**Very Poor** - Water is removed from the soil so slowly that the water table remains at or on the soil surface for the greater part of the time the soil is not frozen. Excess water is present in the soil throughout most of the year.

**Poor** - Water is removed so slowly in relation to supply that the soil remains wet for a large part of the time the soil is not frozen. Excess water is available within the soil for a large part of the time.

**Poor, drained** - Water is removed slowly in relation to supply and the soil remains wet for a significant portion of the growing season. Although these soils may retain characteristics of poor internal drainage, extensive surface drainage improvements enable these soils to be used for annual crop production.

**Imperfect** - Water is removed from the soil sufficiently slowly in relation to supply to keep the soil wet for a significant part of the growing season. Excess water moves slowly down the profile if precipitation is the major source.

**Well** - Water is removed from the soil readily but not rapidly. Excess water flows downward readily into underlying materials or laterally as subsurface flow.

**Rapid** - Water is removed from the soil rapidly in relation to supply. Excess water flows downward if underlying material is pervious. Subsurface flow may occur on steep slopes during heavy rainfall.

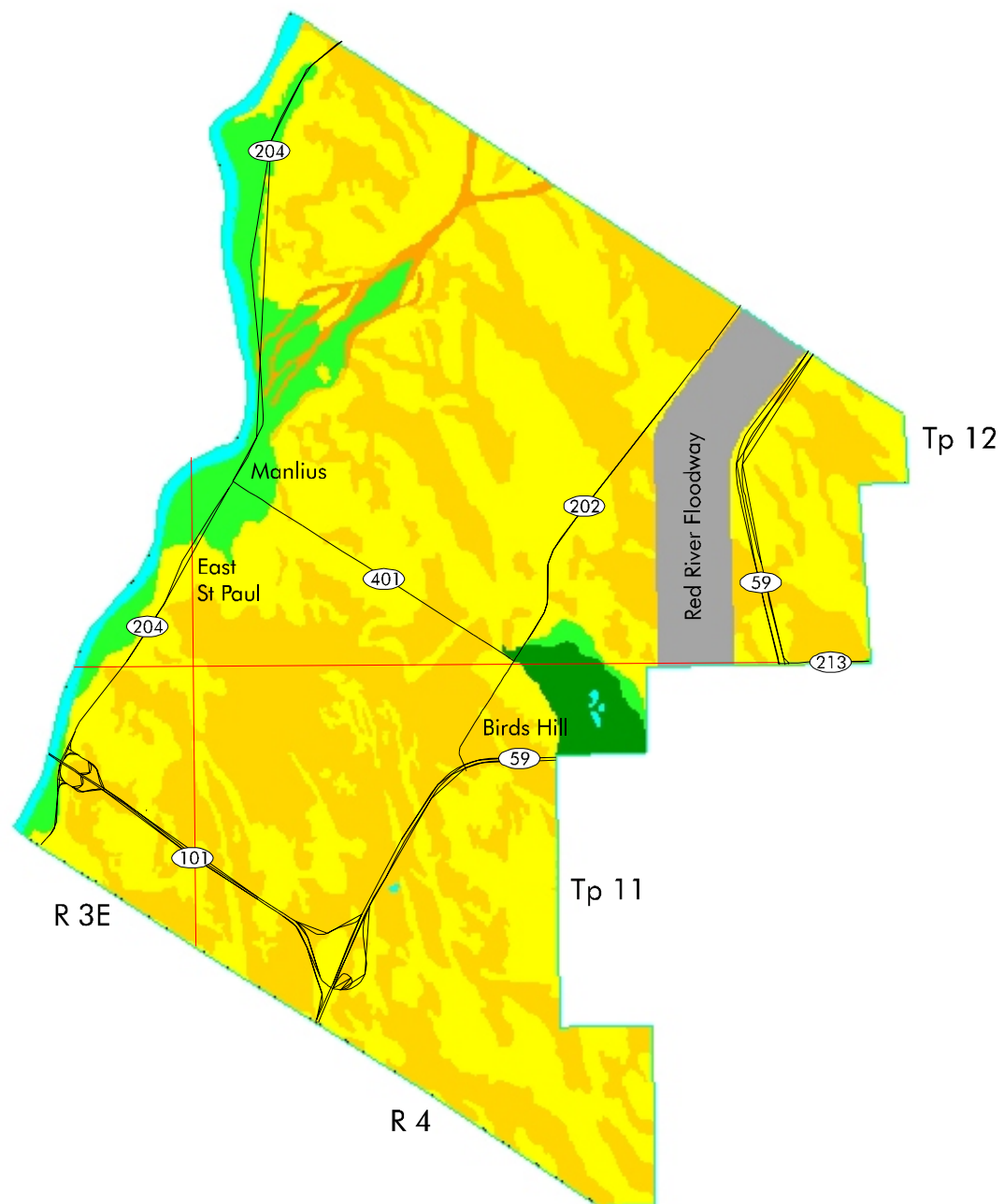
Drainage classification is based on the dominant soil series within each individual soil polygon.

**Table 3. Drainage Classes<sup>1</sup>**

<b>Drainage Class</b>	<b>Area (ha)</b>	<b>Percent of RM</b>
<b>Very Poor</b>	<b>0</b>	<b>0.0</b>
<b>Poor</b>	<b>52</b>	<b>1.2</b>
<b>Poor, drained</b>	<b>1702</b>	<b>39.2</b>
<b>Imperfect</b>	<b>1961</b>	<b>45.1</b>
<b>Well</b>	<b>255</b>	<b>5.9</b>
<b>Rapid</b>	<b>73</b>	<b>1.7</b>
<b>Rock</b>	<b>0</b>	<b>0.0</b>
<b>Marsh</b>	<b>0</b>	<b>0.0</b>
<b>Unclassified</b>	<b>224</b>	<b>5.2</b>
<b>Water</b>	<b>78</b>	<b>1.8</b>
<b>Total</b>	<b>4344</b>	<b>100.0</b>

<sup>1</sup> Area has been assigned to the dominant drainage class for each soil polygon.

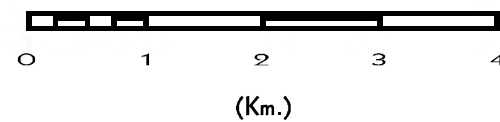
## Soil Drainage Map



### Drainage Classes

	Rapid
	Well
	Imperfect
	Poor, drained
	Poor
	Very poor
	Rock
	Unclassified
	Marsh
	Water

### Scale



Universal Transverse Mercator  
(NAD27) Projection

Land Resource Unit  
Brandon Research Centre  
September 1999

**Soil Salinity Map.**

A saline soil contains soluble salts in such quantities that they interfere with the growth of most crops. Soil salinity is determined by the electrical conductivity of the saturation extract in decisiemens per metre (dS/m). Approximate limits of salinity classes are:

<b>non-saline</b>	< 4 dS/m
<b>weakly saline</b>	4 to 8 dS/m
<b>moderately saline</b>	8 to 15 dS/m
<b>strongly saline</b>	> 15 dS/m

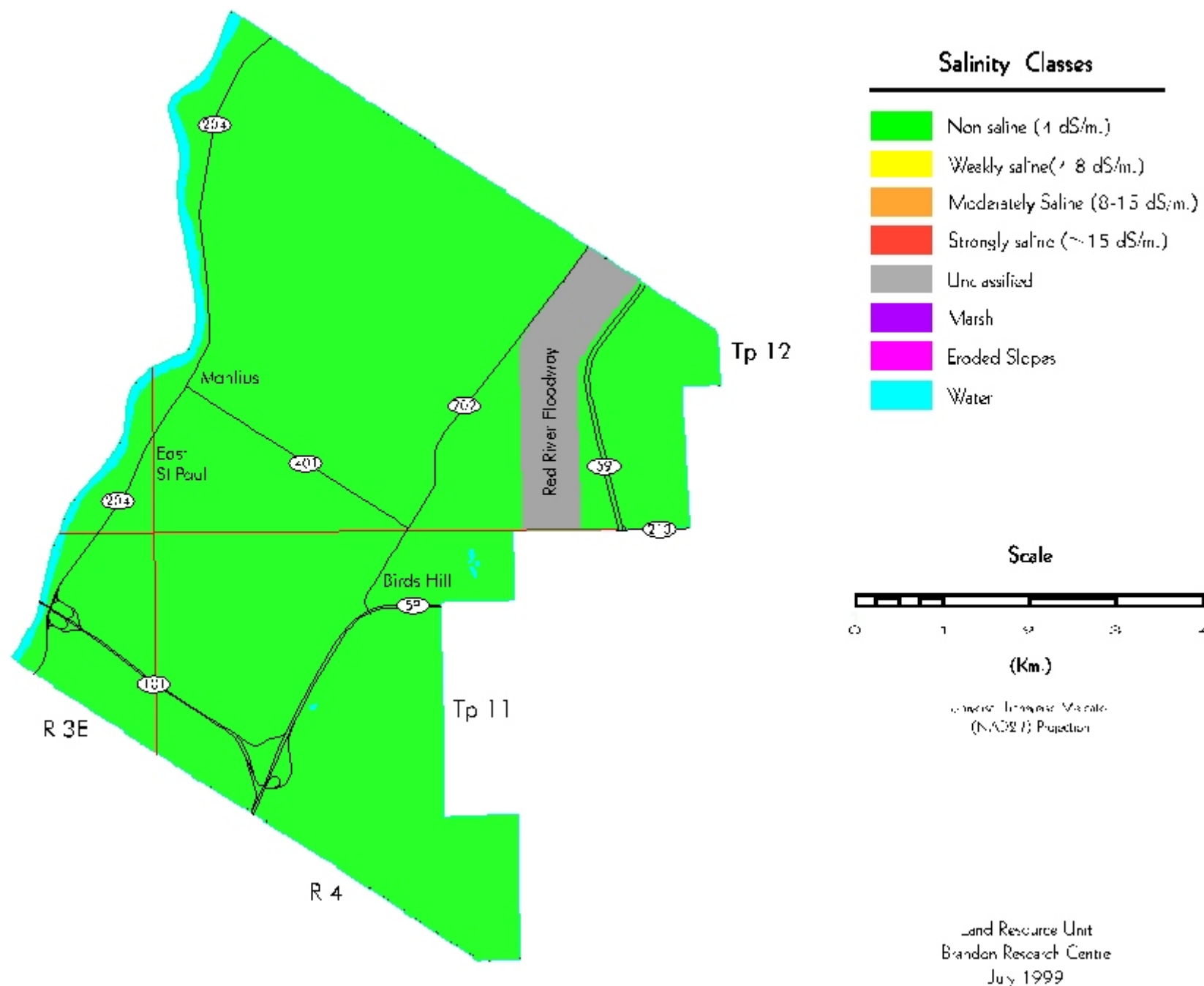
The salinity classification of each individual soil polygon was determined by the most severe salinity classification present within that polygon.

**Table 4. Salinity Classes<sup>1</sup>**

<b>Salinity Class</b>	<b>Area (ha)</b>	<b>Percent of RM</b>
<b>Non Saline</b>	<b>4043</b>	<b>93.1</b>
<b>Weakly Saline</b>	<b>0</b>	<b>0.0</b>
<b>Moderately Saline</b>	<b>0</b>	<b>0.0</b>
<b>Strongly Saline</b>	<b>0</b>	<b>0.0</b>
<b>Eroded Slopes</b>	<b>0</b>	<b>0.0</b>
<b>Marsh</b>	<b>0</b>	<b>0.0</b>
<b>Unclassified</b>	<b>224</b>	<b>5.2</b>
<b>Water</b>	<b>78</b>	<b>1.8</b>
<b>Total</b>	<b>4344</b>	<b>100.0</b>

<sup>1</sup> Area has been assigned to the most severe salinity class for each soil polygon.

## Soil Salinity Map





### Management Considerations Map.

Management consideration maps are provided to focus on awareness of land resource characteristics important to land use. This map does not presume a specific land use. Rather it portrays the most common and wide spread attributes that apply to most soil landscapes in the province.

These maps **highlight attributes** of soil-landscapes that the land manager must consider for any intended land use.

- Fine texture
- Medium texture
- Coarse texture
- Topography
- Wetness
- Organic
- Bedrock

**F = Fine texture** - soil landscapes with **fine textured soils (clays and silty clays)**, and thus low infiltration and internal permeability rates. These require special considerations to mitigate surface ponding (water logging), runoff, and trafficability. Timing and type of tillage practices used may be restricted.

**M = Medium texture** - soil landscapes with medium to moderately fine textures (**loams to clay loams**), and good water and nutrient retention properties. Good management and cropping practices are required to minimize leaching and the risk of erosion.

**C = Coarse texture** - soil landscapes with **coarse to very coarse textured soils (loamy sands, sands and gravels)**, have a high permeability throughout the profile, and require special management practices related to application of agricultural chemicals, animal wastes, and municipal effluent to protect and sustain the long term quality of the soil and water resources. The risk of soil erosion can be minimized through the use of shelterbelts and maintenance of crop residues.

**T = Topography** - soil landscapes with **slopes greater than 5 %** are steep enough to require special management practices to minimize the risk of erosion.

**W = Wetness** - soil landscapes that have **poorly drained soils and/or >50 % wetlands** (due to seasonal and annual flooding, surface ponding, permanent water bodies (sloughs), and/or high water tables), require special management practices to mitigate adverse impact on water quality, protect subsurface aquifers, and sustain crop production during periods of high risk of water logging.

**O = Organic** - soil landscapes with organic soils, requiring special management considerations of drainage, tillage, and cropping to sustain productivity and minimize subsidence and erosion.

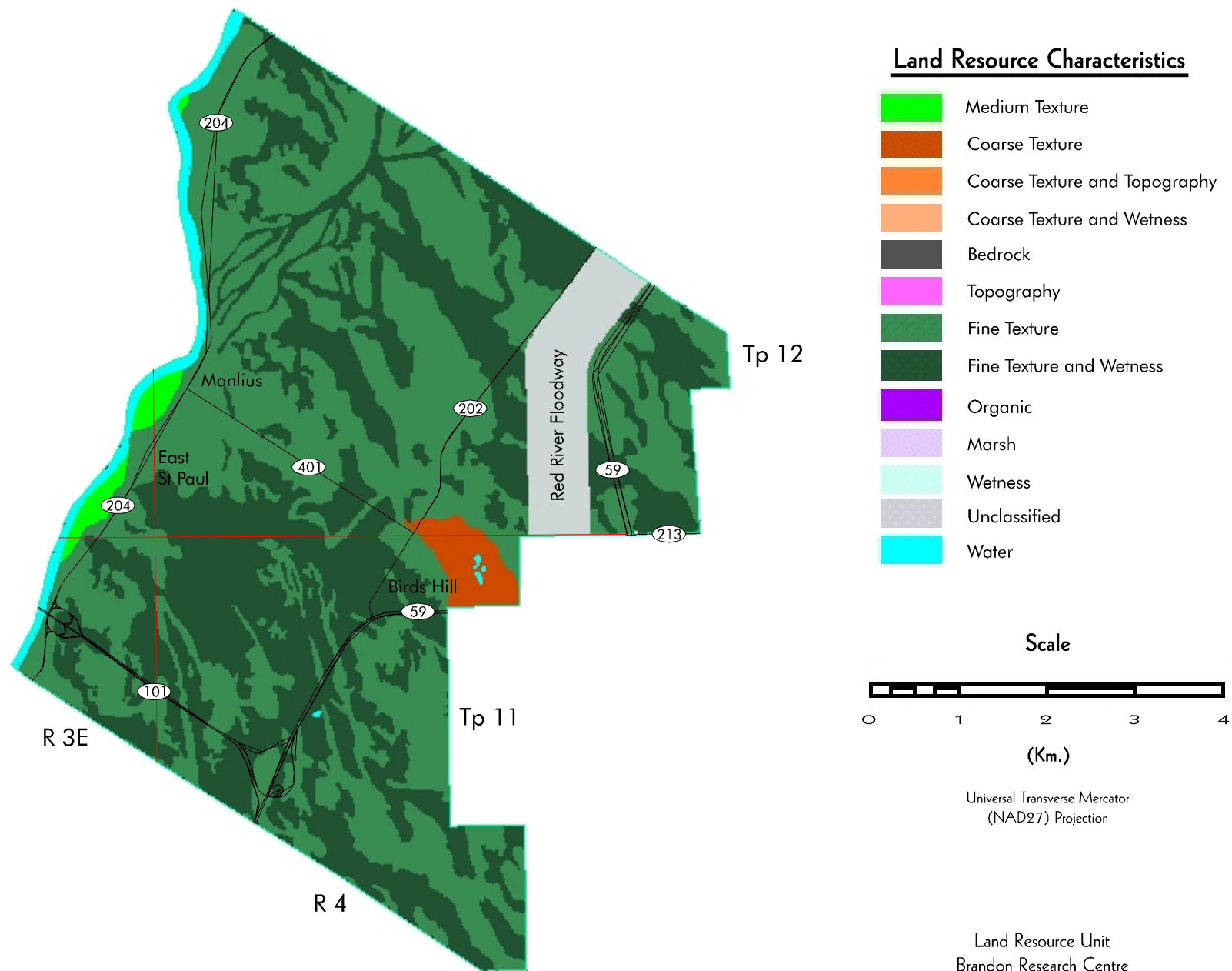
**R = Bedrock** - soil landscapes that have shallow depth to bedrock (< 50 cm) and/or exposed bedrock which may prevent the use of some or all tillage practices as well as the range of potential crops. They require special cropping and management practices to sustain agricultural production.

**Table 4. Management Considerations<sup>1</sup>**

Land Resource Characteristics	Area (ha)	Percent of RM
<b>Fine Texture</b>	<b>2170</b>	<b>50.0</b>
<b>Fine Texture and Wetness</b>	<b>1753</b>	<b>40.4</b>
<b>Fine Texture and Topography</b>	<b>0</b>	<b>0.0</b>
<b>Medium Texture</b>	<b>46</b>	<b>1.1</b>
<b>Coarse Texture</b>	<b>73</b>	<b>1.7</b>
<b>Coarse Texture and Wetness</b>	<b>0</b>	<b>0.0</b>
<b>Coarse Texture and Topography</b>	<b>0</b>	<b>0.0</b>
<b>Topography</b>	<b>0</b>	<b>0.0</b>
<b>Bedrock</b>	<b>0</b>	<b>0.0</b>
<b>Wetness</b>	<b>0</b>	<b>0.0</b>
<b>Organic</b>	<b>0</b>	<b>0.0</b>
<b>Marsh</b>	<b>0</b>	<b>0.0</b>
<b>Unclassified</b>	<b>224</b>	<b>5.2</b>
<b>Water</b>	<b>78</b>	<b>1.8</b>
<b>Total</b>	<b>4344</b>	<b>100.0</b>

<sup>1</sup> Based on the **dominant** soil series and slope gradient within each polygon.

## Management Considerations Map



### Agricultural Capability Map.

This evaluation utilizes the 7 class Canada Land Inventory system (CLI, 1965). Classes 1 to 3 represent the prime agricultural land, class 4 land is marginal for sustained cultivation, class 5 land is capable of perennial forages and improvement is feasible, class 6 land is capable of producing native forages and pasture but improvement is not feasible, and class 7 land is considered unsuitable for dryland agriculture. Subclass modifiers include structure and/or permeability (D), erosion (E), inundation (I), moisture limitation (M), salinity (N), stoniness (P), consolidated bedrock (R), topography (T), excess water (W) and cumulative minor adverse characteristics (X).

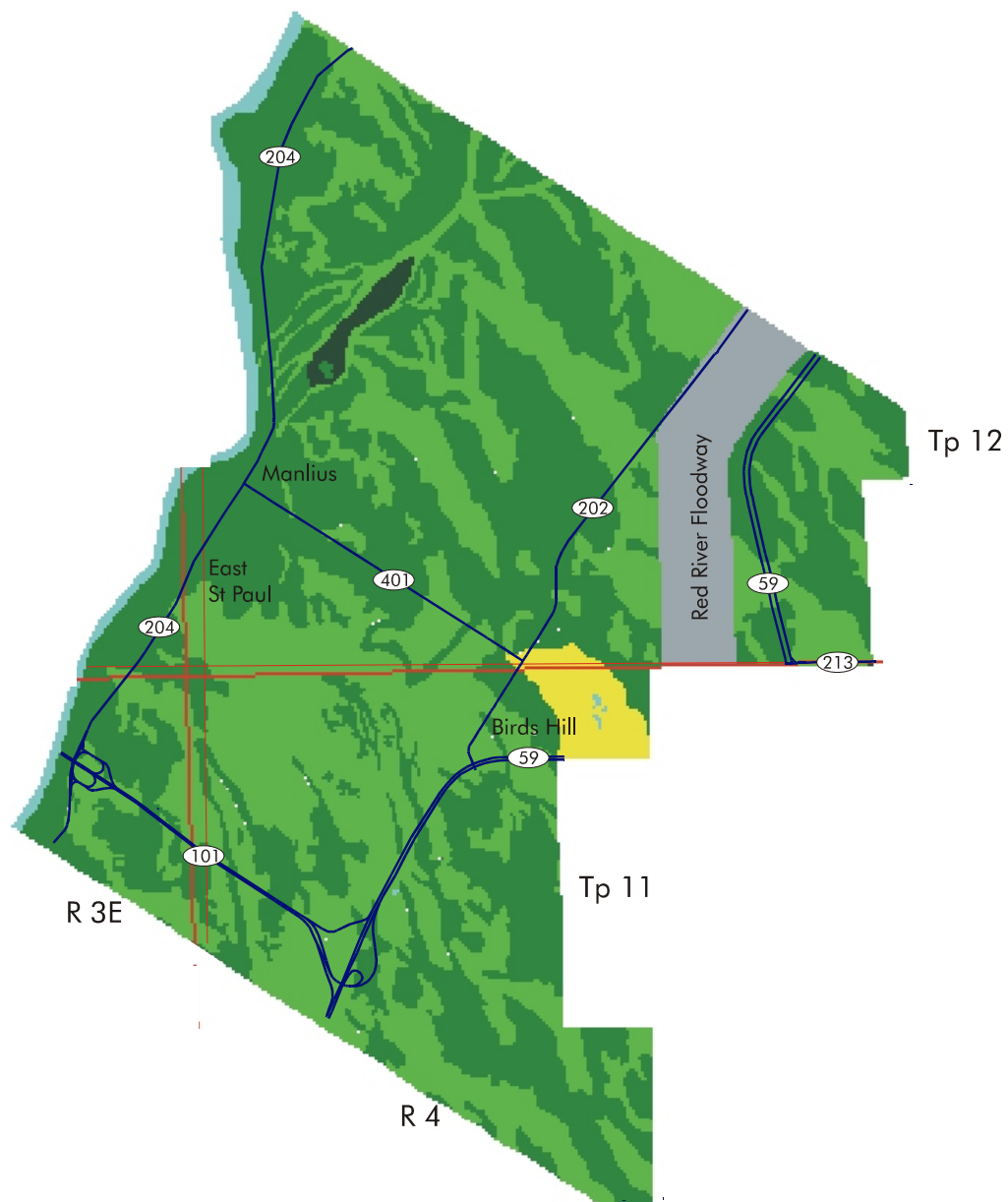
This generalized interpretive map is based on the dominant soil series and phases for each soil polygon. The CLI subclass limitations cannot be portrayed at this generalized map scale.

**Table 5. Agricultural Capability<sup>1</sup>**

<b>Class Subclass</b>	<b>Area (ha)</b>	<b>Percent of RM</b>
<b>1</b>	<b>27</b>	<b>0.6</b>
<b>2</b>	<b>2175</b>	<b>49.8</b>
2D	183	4.2
2I	46	1.1
2W	1946	44.5
<b>3</b>	<b>1776</b>	<b>40.7</b>
3W	1776	40.7
<b>5</b>	<b>78</b>	<b>1.8</b>
5M	78	1.8
<b>Unclassified</b>	<b>222</b>	<b>5.1</b>
<b>Water</b>	<b>90</b>	<b>2.1</b>
<b>Organic</b>	<b>0</b>	<b>0.0</b>
<b>Total</b>	<b>4368</b>	<b>100.0</b>

<sup>1</sup> Based on the **dominant** soil series and slope gradient within each polygon.

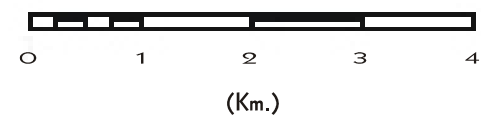
## Agriculture Capability Map



### Canada Land Inventory Classes

- Class 1
- Class 2
- Class 3
- Class 4
- Class 5
- Class 6
- Class 7
- Organic
- Unclassified
- Water

### Scale



Universal Transverse Mercator  
(NAD27) Projection

Land Resource Unit  
Winnipeg Manitoba  
June 2003

### Irrigation Suitability Map.

Irrigation ratings are based on an assessment of the most limiting combination of soil and landscape conditions. Soils in the same class have a similar relative suitability or degree of limitation for irrigation use, although the specific limiting factors may differ. These limiting factors are described by subclass symbols at detailed map scales. The irrigation rating system does not consider water availability, method of application, water quality, or economics of irrigated land use.

Irrigation suitability is a four class rating system. Areas with no or slight soil and/or landscape limitations are rated **Excellent** to **Good** and can be considered irrigable. Areas with moderate soil and/or landscape limitations are rated as **Fair** and considered marginal for irrigation providing adequate management exists so that the soil and adjacent areas are not adversely affected by water application. Soil and landscape areas rated as **Poor** have severe limitations for irrigation.

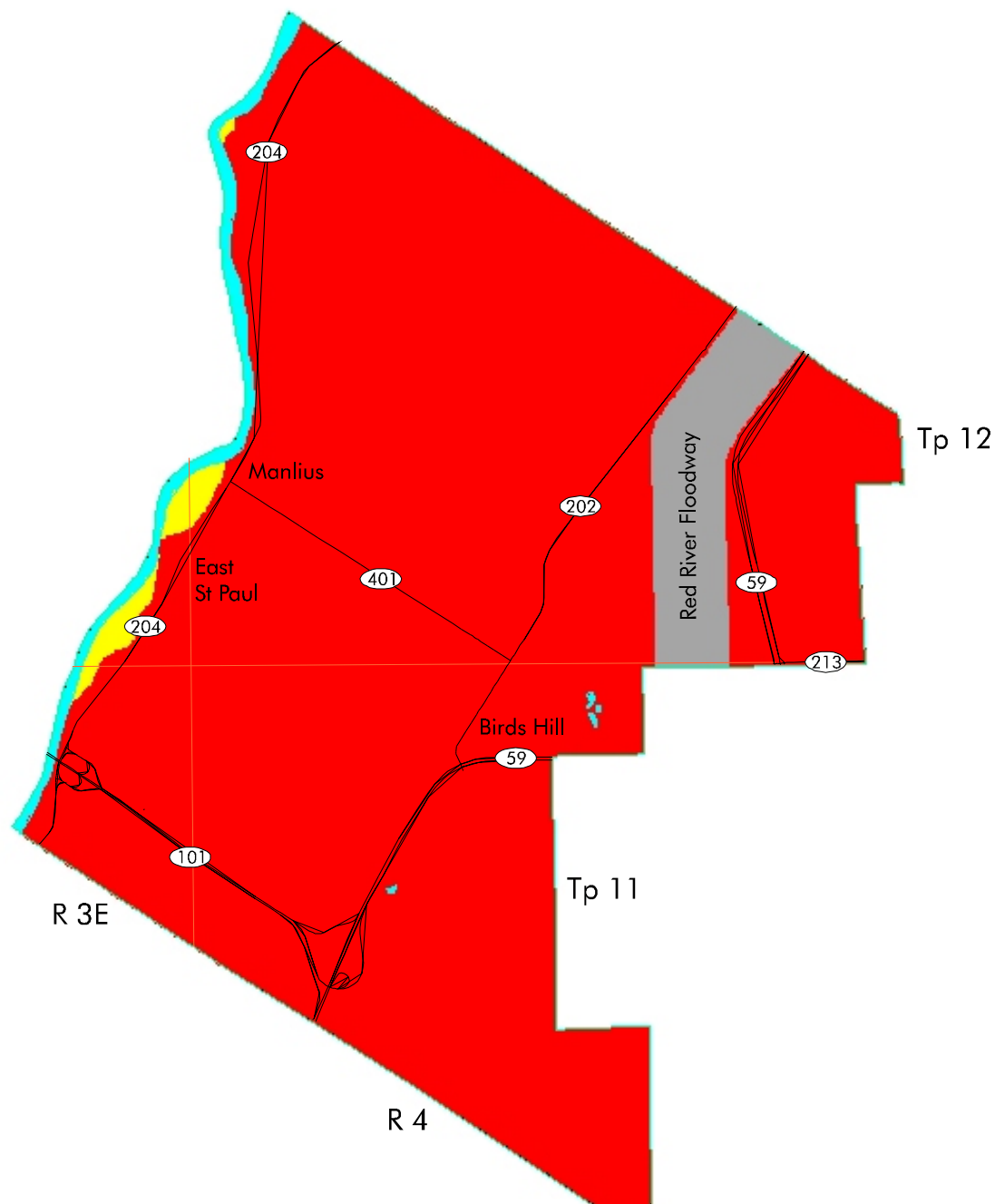
This generalized interpretive map is based on the dominant soil series for each soil polygon, in combination with the dominant slope class. The nature of the subclass limitations and the classification of subdominant components is not shown at this generalized map scale.

**Table 6. Irrigation Suitability<sup>1</sup>**

<b>Class</b>	<b>Area (ha)</b>	<b>Percent of RM</b>
<b>Excellent</b>	<b>0</b>	<b>0.0</b>
<b>Good</b>	<b>46</b>	<b>1.1</b>
<b>Fair</b>	<b>0</b>	<b>0.0</b>
<b>Poor</b>	<b>3997</b>	<b>92.0</b>
<b>Organic</b>	<b>0</b>	<b>0.0</b>
<b>Unclassified</b>	<b>224</b>	<b>5.2</b>
<b>Water</b>	<b>78</b>	<b>1.8</b>
<b>Total</b>	<b>4344</b>	<b>100.0</b>

<sup>1</sup> Based on the **dominant** soil series and slope gradient within each polygon.

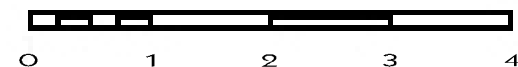
## Irrigation Suitability Map



### Irrigation Suitability Classes



### Scale



(Km.)

Universal Transverse Mercator  
(NAD27) Projection

Land Resource Unit  
Brandon Research Centre  
July 1999

**Potential Environmental Impact Under Irrigation Map.**

A major environmental concern for land under irrigated crop production is the possibility that surface and/or ground water may be impacted. The potential environmental impact assessment provides a relative rating of land into 4 classes (minimal, low, moderate and high) based on an evaluation of specific soil factors and landscape conditions that determine the impact potential.

Soil factors considered are those properties that determine water retention and movement through the soil; topographic features are those that affect runoff and redistribution of moisture in the landscape. Several factors are specifically considered: soil texture, hydraulic conductivity, salinity, geological uniformity, depth to water table and topography. The risk of altering surface and subsurface soil drainage regimes, soil salinity, potential for runoff, erosion and flooding is determined by specific criteria for each property.

Use of this rating is intended to serve as a warning of potential environmental concern. It may be possible to design and/or give special consideration to soil-water-crop management practices that will mitigate any adverse impact.

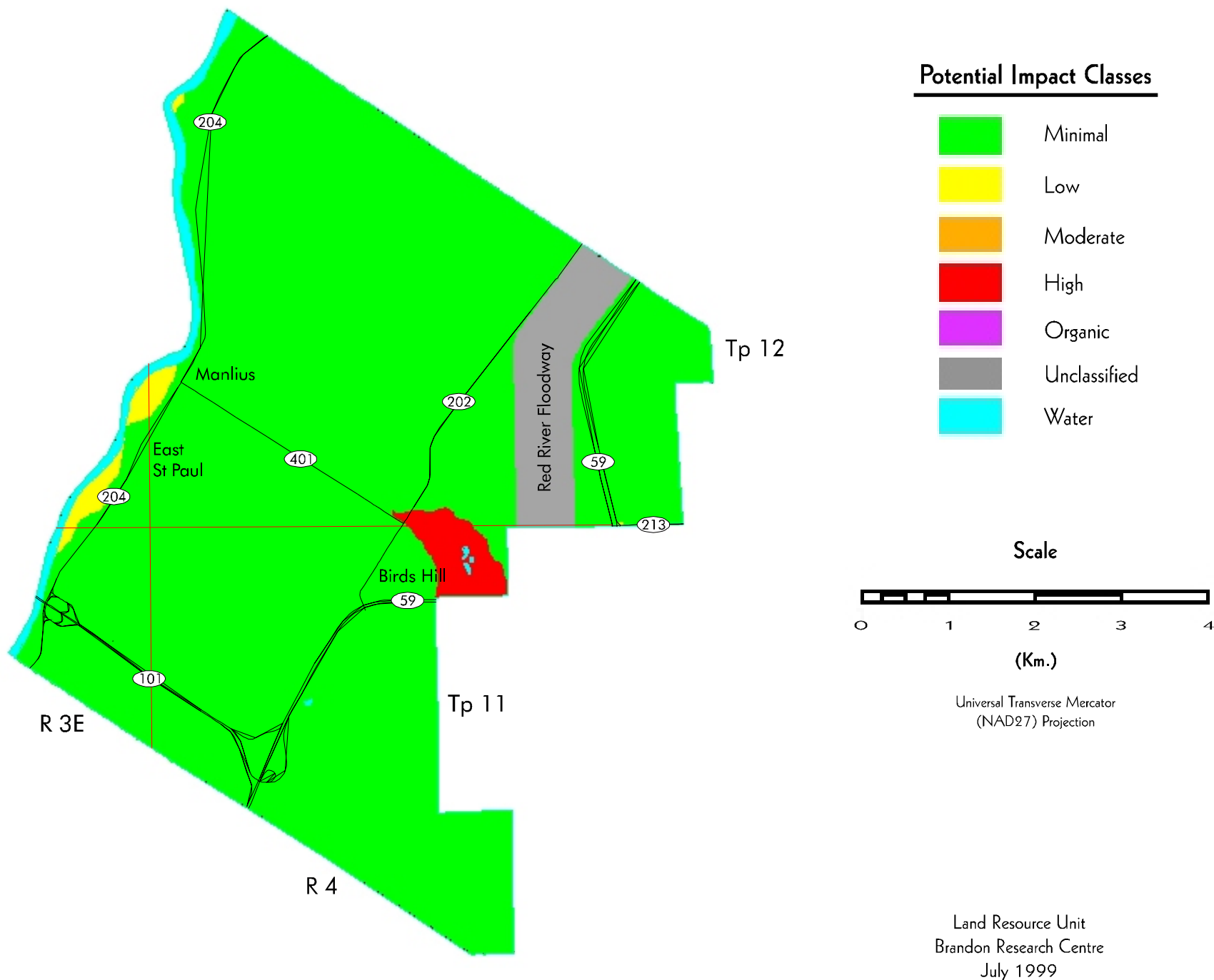
This generalized interpretive map is based on the dominant soil series and slope class for each soil polygon. The nature of the subclass limitations, and the classification of subdominant components is not shown at this generalized map scale.

**Table 7. Potential Environmental Impact Under Irrigation<sup>1</sup>**

<b>Class</b>	<b>Area (ha)</b>	<b>Percent of RM</b>
<b>Minimal</b>	<b>3923</b>	<b>90.3</b>
<b>Low</b>	<b>46</b>	<b>1.1</b>
<b>Moderate</b>	<b>0</b>	<b>0.0</b>
<b>High</b>	<b>73</b>	<b>1.7</b>
<b>Organic</b>	<b>0</b>	<b>0.0</b>
<b>Unclassified</b>	<b>224</b>	<b>5.2</b>
<b>Water</b>	<b>78</b>	<b>1.8</b>
<b>Total</b>	<b>4344</b>	<b>100.0</b>

<sup>1</sup> Based on the **dominant** soil series and slope gradient within each polygon.

## Potential Environmental Impact Under Irrigation





**Water Erosion Risk Map.**

The risk of water erosion was estimated using the universal soil loss equation (USLE) developed by Wischmeier and Smith (1965). The USLE predicted soil loss (tons/hectare/year) is calculated for each soil component in each soil map polygon. Erosion risk classes are assigned based on the weighted average soil loss for each map polygon. Water erosion risk factors include mean annual rainfall, slope length, slope gradient, vegetation cover, management practices, and soil erodibility. The map shows 5 classes of soil erosion risk based on bare unprotected soil:

**negligible**  
**low**  
**moderate**  
**high**  
**severe**

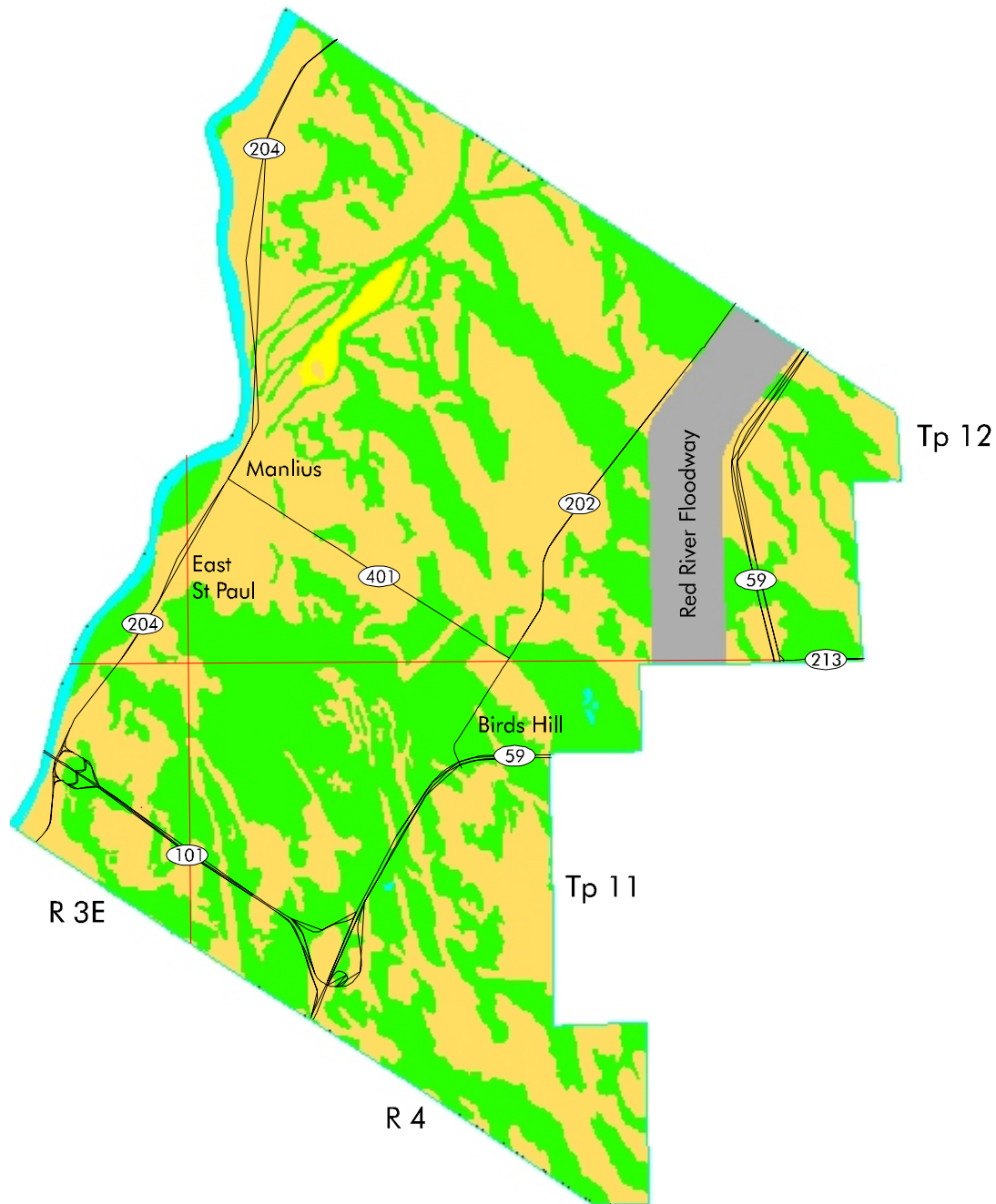
Cropping and residue management practices will significantly reduce this risk depending on crop rotation program, soil type, and landscape features.

**Table 8. Water Erosion Risk<sup>1</sup>**

<b>Class</b>	<b>Area (ha)</b>	<b>Percent of RM</b>
<b>Negligible</b>	<b>1873</b>	<b>43.1</b>
<b>Low</b>	<b>2143</b>	<b>49.3</b>
<b>Moderate</b>	<b>27</b>	<b>0.6</b>
<b>High</b>	<b>0</b>	<b>0.0</b>
<b>Severe</b>	<b>0</b>	<b>0.0</b>
<b>Unclassified</b>	<b>224</b>	<b>5.2</b>
<b>Water</b>	<b>78</b>	<b>1.8</b>
<b>Total</b>	<b>4344</b>	<b>100.0</b>

<sup>1</sup> Based on the **weighted average** USLE predicted soil loss within each polygon, assuming a bare unprotected soil.

## Water Erosion Risk Map



### Mean Risk Values



### Scale



(Km.)

Universal Transverse Mercator  
(NAD27) Projection

Land Resource Unit  
Brandon Research Centre  
July 1999

**Land Use Map.**

The land use classification of the RM has been interpreted from LANDSAT satellite imagery, using supervised computer classification techniques. Many individual spectral signatures were classified and grouped into the seven general land use classes shown here. Although land use changes over time, and some land use practices on individual parcels may occasionally result in similar spectral signatures, this map provides a general representation of the current land use in the RM.

The following is a brief description of the land use classes:

**Annual Crop Land** - land that is normally cultivated on an annual basis.

**Forage** - perennial forages, generally alfalfa or clover with blends of tame grasses.

**Grasslands** - areas of native or tame grasses, may contain scattered stands of shrubs.

**Trees** - lands that are primarily in tree cover.

**Wetlands** - areas that are wet, often with sedges, cattails, and rushes.

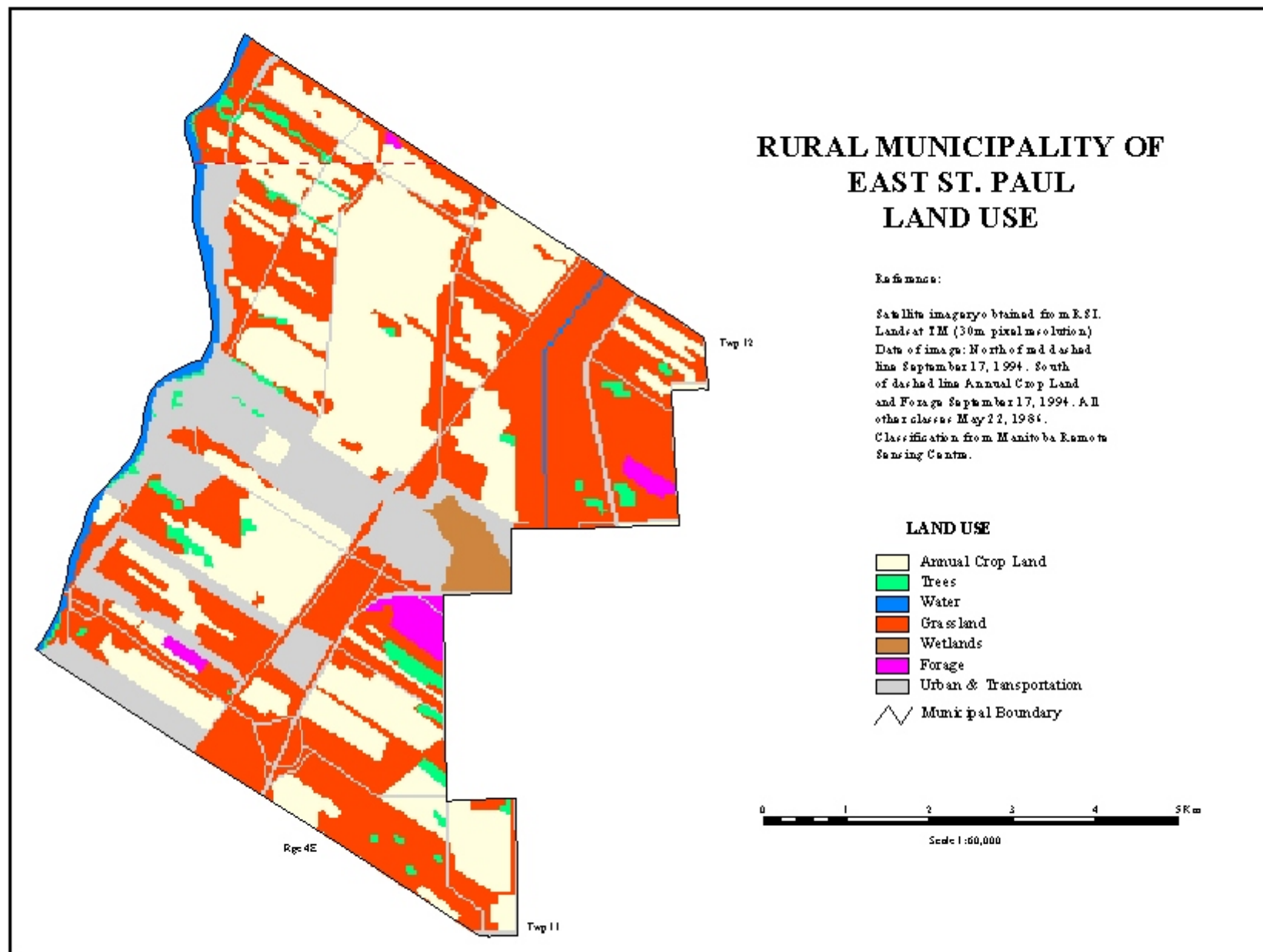
**Water** - open water - lakes, rivers streams, ponds, and lagoons.

**Urban and Transportation** - towns, roads, railways, quarries.

**Table 9. Land Use<sup>1</sup>**

<b>Class</b>	<b>Area (ha)</b>	<b>Percent of RM</b>
<b>Annual Crop Land</b>	<b>1531</b>	<b>35.3</b>
<b>Forage</b>	<b>65</b>	<b>1.5</b>
<b>Grasslands</b>	<b>1679</b>	<b>38.7</b>
<b>Trees</b>	<b>97</b>	<b>2.2</b>
<b>Wetlands</b>	<b>67</b>	<b>1.5</b>
<b>Water</b>	<b>90</b>	<b>2.1</b>
<b>Urban and transportation</b>	<b>804</b>	<b>18.6</b>
<b>Total</b>	<b>4333</b>	<b>100.0</b>

<sup>1</sup> Land use information (1995) and map supplied by Prairie Farm Rehabilitation Administration. Areas may vary from previous maps due to differences in analytical procedures.



**REFERENCES**

Agronomic Interpretations Working Group. 1995. Land Suitability Rating System for Agricultural Crops: 1. Spring-seeded Small Grains. Edited by W.W. Pettapiece. Tech. Bull. 1995-6E. Centre for Land and Biological Resources Research, Agriculture and Agri-Food Canada, Ottawa. 90 pages, 2 maps.

Ash, G.H.B. 1991. An Agroclimatic Risk Assessment of Southern Manitoba and Southeastern Saskatchewan. M.A. Thesis. Department of Geography, University of Manitoba, Winnipeg.

Canada Land Inventory. 1965. Soil Capability Classification for Agriculture. Canada Land Inventory Report No. 2. ARDA, Dept. of Forestry, Canada, Ottawa.

Canada-Manitoba Soil Survey. 1980. Physiographic Regions of Manitoba. Ellis Bldg., University of Manitoba, Winnipeg. Revised. Unpublished Report.

Canada-Manitoba Soil Survey. 1979. Ecological Regions and Subregions in Manitoba. Ellis Bldg., University of Manitoba, Winnipeg. Revised. Unpublished Report.

Ehrlich, W.A., Poyser, E.A. Pratt, L.E. and Ellis, J. H. 1953 Report of Reconnaissance Soil Survey of Winnipeg and Morris Map Sheet Areas. Soils Report No. 5. Manitoba Soil Survey. Published by Manitoba Dept. of Agriculture. 111pp and 2 maps.

Environment Canada. 1982. Canadian Climatic Normals 1951-1980. Frost, Vol. 6; Atmospheric Environment, Downsview, Ontario.

Environment Canada. 1993. Canadian Climatic Normals 1961-1990. Prairie Provinces. Atmospheric Environment, Downsview, Ontario.

Irrigation Suitability Classification Working Group. 1987. An Irrigation Suitability Classification System for the Canadian Prairies. LRRC contribution no. 87-83, Land Resource Research Centre, Research Branch, Agriculture Canada, Ottawa

Land Resource Unit. 1999. Soil and Terrain Classification System Manual. In preparation. Ellis Bldg. University of Manitoba. Winnipeg.

MacDonald, K.B., and Valentine, K.W.G. 1992. CanSIS Manual 1 CanSIS/NSDB: A General Description. Land Resource Division, Centre for Land and Biological Resources Research, Research Branch, Agriculture Canada, Ottawa.

Michalyna, W., Gardiner, Wm. and Podolsky, G. 1975. Soils of the Winnipeg Region Study Area. Report D14. Canada-Manitoba Soil Survey. Winnipeg.

Soil Classification Working Group. 1998. The Canadian System of Soil Classification. Agric. and Agri-Food Canada. Publ. 1646. (Revised). 187 pp.

Wischmeier, W.H. and Smith, D.D. 1965. Predicting Rainfall-erosion Loss from Cropland East of the Rocky Mountains. U.S. Department of Agriculture, Agriculture Handbook No. 282, U.S. Government Printing Office, Washington, D.C.