

May 13 to 19, 2018 (Week 20)

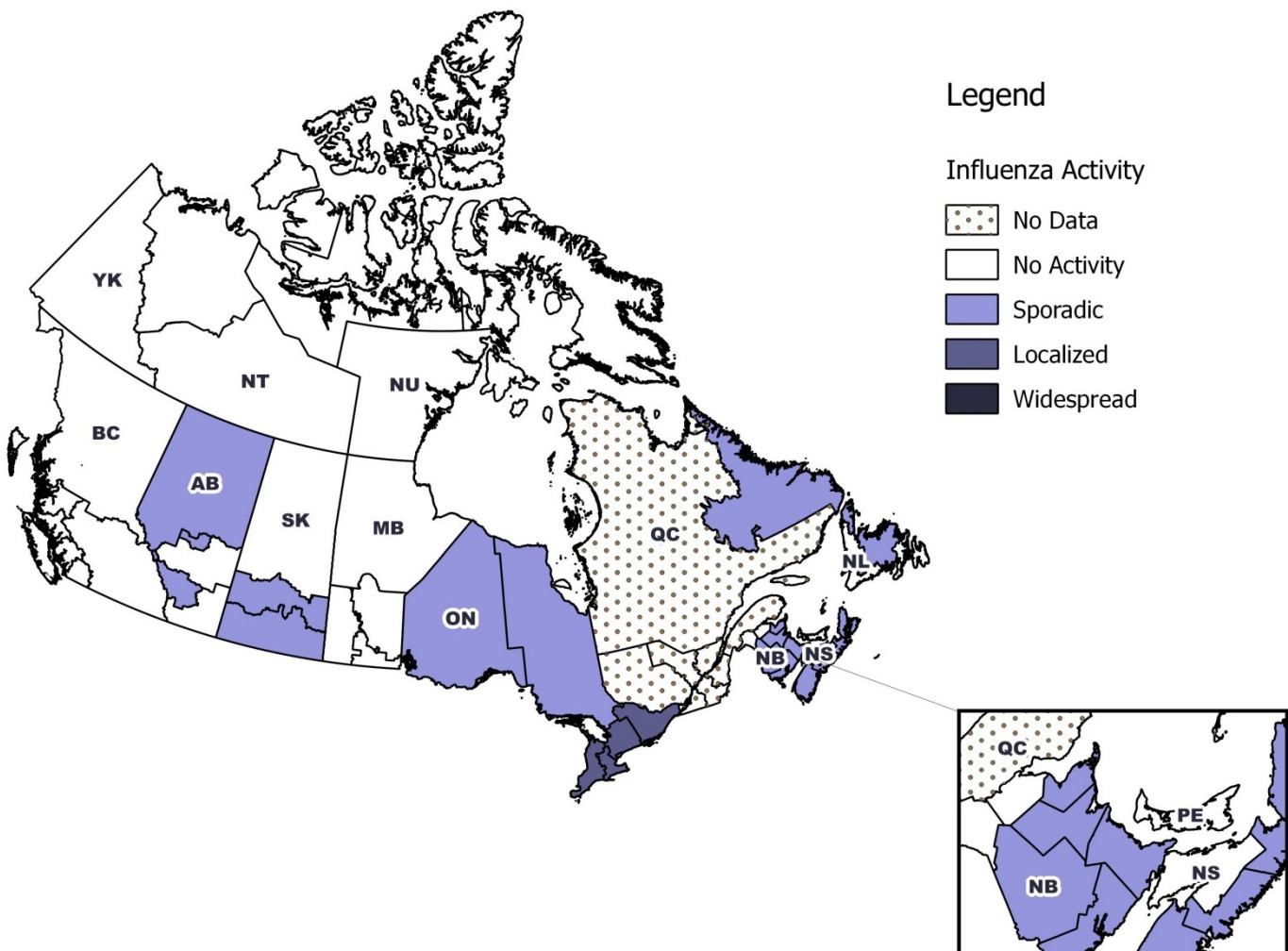
Overall Summary

- Nationally, the 2017-18 influenza season has ended.
- The majority of regions in Canada are reporting sporadic or no influenza activity.
- All indicators of influenza activity are either near or below average for this time of year.
- This is the last weekly report for the 2017-18 season. FluWatch will publish monthly reports over the summer. The next report will be published June 29, 2018.
- Influenza and other respiratory viruses will be monitored weekly and results will be reported every Thursday in the [Respiratory Virus Detections in Canada Report](#).
- For more information on the flu, see our [Flu\(influenza\)](#) web page.

Influenza/Influenza-like Illness (ILI) Activity (geographic spread)

In week 20, four regions in Ontario reported localized activity. The provinces of BC and PE and the territories reported no activity.

Figure 1 – Map of overall influenza/ILI activity level by province and territory, Canada, week 2018-20



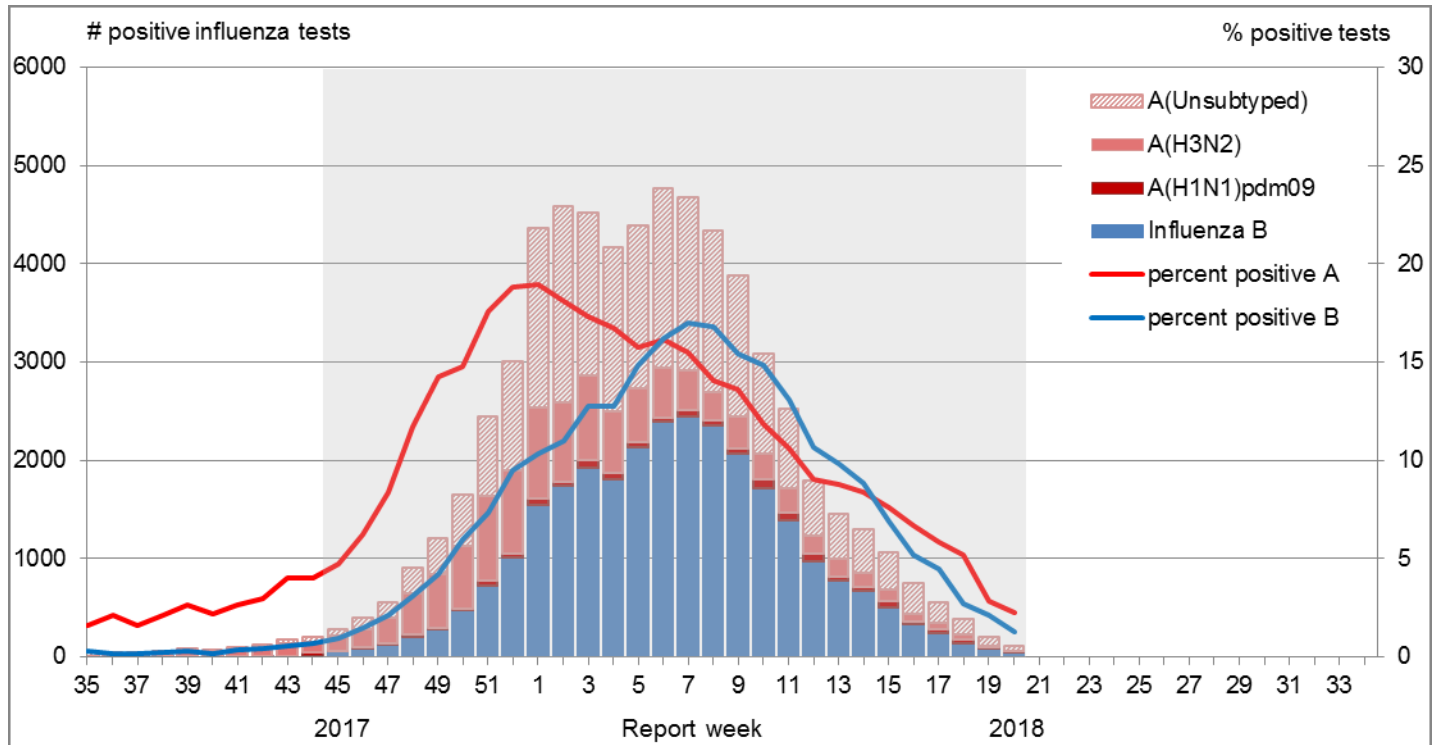
Laboratory-Confirmed Influenza Detections

In week 20, the percentage of tests positive for influenza was 3.5%, a decrease from the previous week. The percentage of tests positive for influenza has been below 5% for two consecutive weeks. This indicates the end of the 2017-18 influenza season in Canada.

In week 20, a total of 106 laboratory detections of influenza were reported and influenza A accounted for 64% of influenza detections. Overall, laboratory detections of influenza are below expected levels for this time of year.

For data on other respiratory virus detections, see the [Respiratory Virus Detections in Canada Report](#).

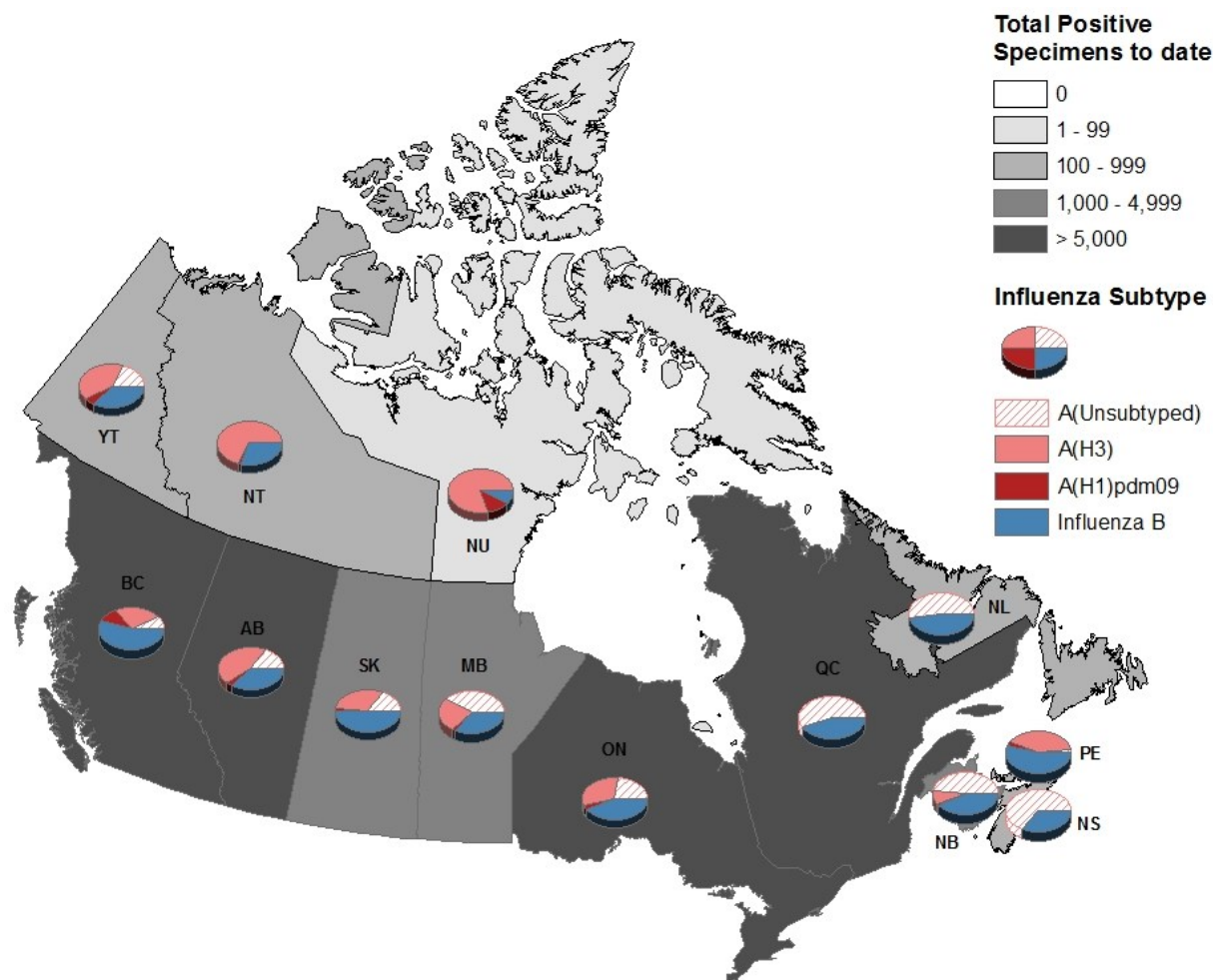
Figure 2 – Number of positive influenza tests and percentage of tests positive, by type, subtype and report week, Canada, weeks 2017-35 to 2018-20



The shaded area indicates weeks where the positivity rate was at least 5% and a minimum of 15 positive tests were observed, signalling the period of [seasonal influenza activity](#).

To date this season, 64,154 laboratory-confirmed influenza detections have been reported, of which 56% have been influenza A. Influenza A(H3N2) has been the most common subtype detected this season, representing 90% of subtyped influenza A detections. For more detailed weekly and cumulative influenza data, see the text descriptions for [Figures 2 and 3](#) or the [Respiratory Virus Detections in Canada Report](#).

Figure 3 – Cumulative numbers of positive influenza specimens by type/subtype and province/territory, Canada, weeks 2017-35 to 2018-20



To date this season, detailed information on age and type/subtype has been received for 54,915 laboratory-confirmed influenza cases (Table 1). Adults 65 years of age and older represent the largest proportion of cases overall (48%), and among cases of influenza A(H3N2) (57%) and influenza B (46%). Adults aged 20-64 represent 32% of cases overall and 30% of influenza A(H3N2) and 34% of influenza B cases. Although much smaller in numbers (1,002), the majority of influenza A(H1N1)pdm09 cases are among adults less than 65 years of age, with adults aged 20-64 and children 0-19 years accounting for 52% and 32% of cases respectively.

Table 1 – Cumulative numbers of positive influenza specimens by type, subtype and age-group reported through case-based laboratory reporting, Canada, weeks 2017-35 to 2018-20

Age groups (years)	Cumulative (August 27, 2017 to May 19, 2018)						
	Influenza A				B	Influenza A and B	
	A Total	A(H1N1) pdm09	A(H3N2)	A (UnS) ¹	Total	#	%
0-4	3348	178	690	2480	1624	4972	9%
5-19	2566	145	724	1697	2998	5564	10%
20-44	4597	274	1430	2893	3055	7652	14%
45-64	4977	245	1638	3094	5123	10100	18%
65+	15621	160	5841	9620	11006	26627	48%
Total	31109	1002	10323	19784	23806	54915	100%

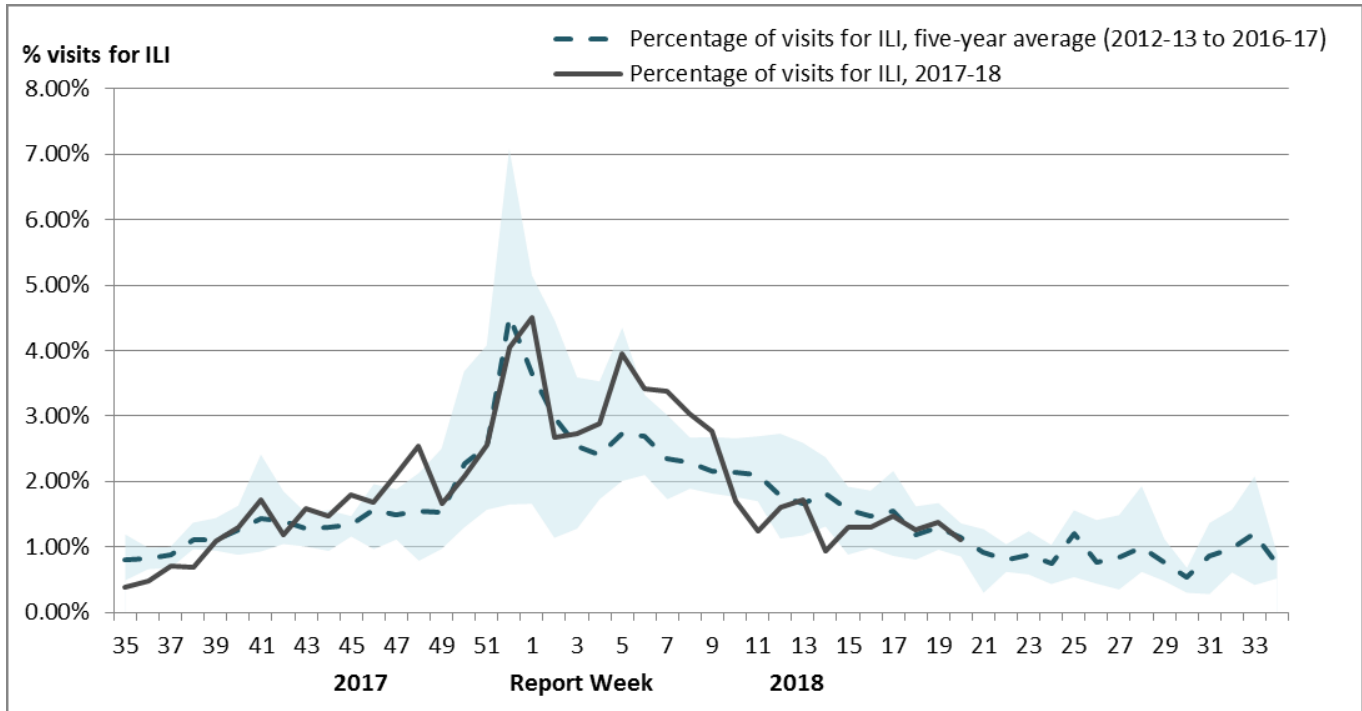
¹UnS: unsubtyped: The specimen was typed as influenza A, but no result for subtyping was available;

Syndromic / Influenza-like Illness Surveillance

Healthcare Practitioners Sentinel Syndromic Surveillance

In week 20, 1.1% of visits to healthcare professionals were due to influenza-like illness (ILI).

Figure 4 – Percentage of visits for ILI reported by sentinels by report week, Canada, weeks 2017-35 to 2018-20
Number of Sentinels Reporting in Week 20: 155



The shaded area represents the maximum and minimum percentage of visits for ILI reported by week from seasons 2012-13 to 2016-17

Participatory Syndromic Surveillance

FluWatchers is a participatory ILI surveillance system that relies on weekly voluntary submissions of syndromic information from Canadians across Canada. [Click here](#) to learn more about the FluWatchers program.

FluWatchers surveillance has ended for the 2017-18 season.

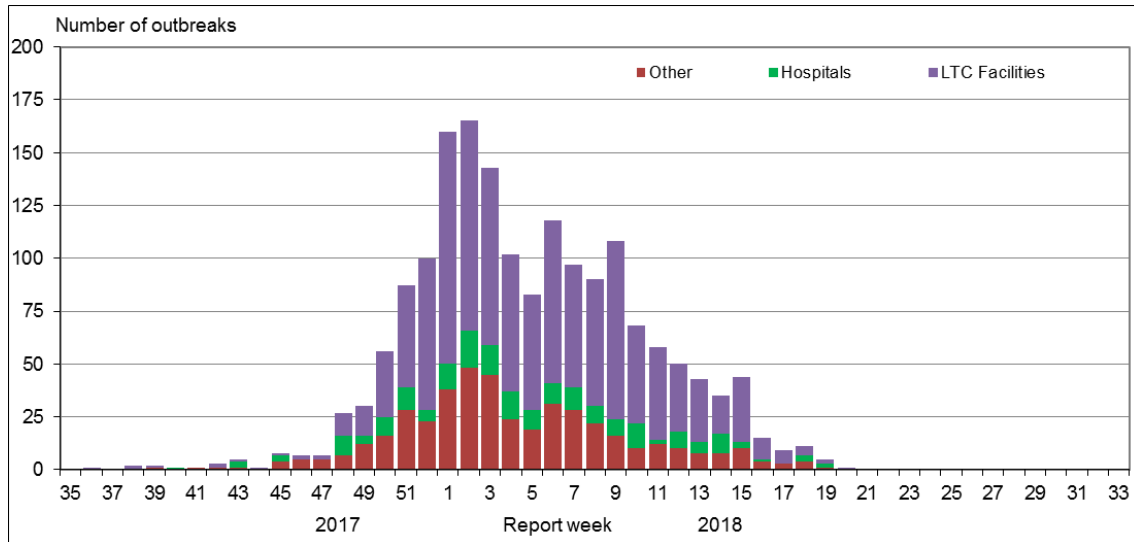
If you are interested in becoming a FluWatcher for the 2018-19 season, [sign up today](#).

Influenza Outbreak Surveillance

In week 20, one outbreak in a long term care facility due to influenza A(H3N2) was reported.

To date this season, 1,795 influenza/ILI outbreaks have been reported, of which 1,105 (62%) occurred in LTC facilities. Among the 1,533 outbreaks for which the influenza type/subtype was reported, 843 (55%) were associated with influenza A and 618 (40%) were associated with influenza B, and 72 (5%) were associated with a mix of A and B.

Figure 5 – Number of new outbreaks of laboratory-confirmed influenza by report week, Canada, weeks 2017-35 to 2018-20



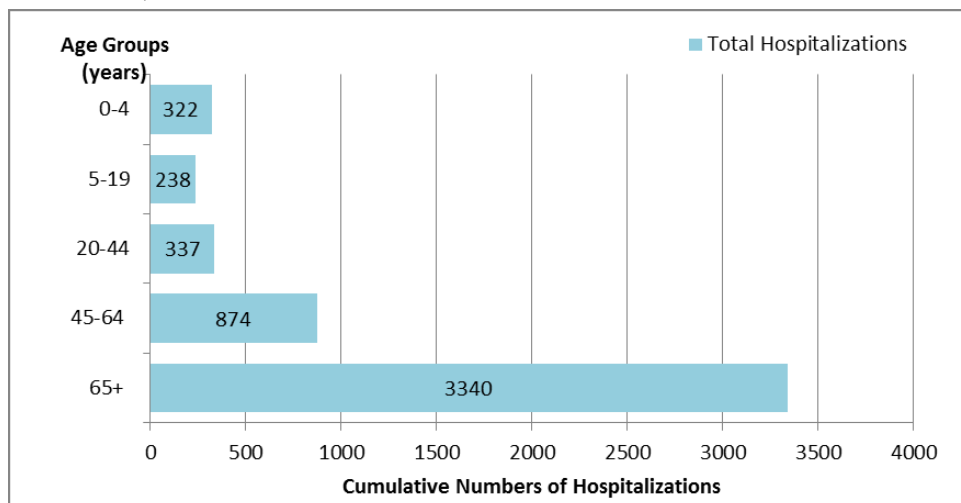
Severe Outcomes Influenza Surveillance

Provincial/Territorial Influenza Hospitalizations and Deaths

To date this season, 5,111 influenza-associated hospitalizations were reported by participating provinces and territories¹. Among the hospitalizations, 3,403 (67%) were associated with influenza A, and 3,340 cases (65%) were in adults 65 years of age or older.

Additionally, 513 ICU admissions and 295 deaths have been reported to date. Adults aged 65 years of age or older accounted for the greatest proportion of ICU cases (44%), followed by adults aged 20-64 (40%). Adults aged 65 years of age or older accounted the majority of deaths (85%).

Figure 6 - Cumulative numbers of hospitalizations by age-group reported by participating provinces and territories¹, weeks 2017-35 to 2018-20



¹Influenza-associated hospitalizations are reported by NL, PE, NS, NB, MB, AB, YT and NT. Only hospitalizations that require intensive medical care are reported by SK.

Pediatric Influenza Hospitalizations and Deaths

In week 20, one laboratory-confirmed influenza-associated pediatric (≤ 16 years of age) hospitalization was reported by the Immunization Monitoring Program Active (IMPACT) network. The number of weekly reported hospitalizations are below the seven-season average.

To date this season, 1,078 pediatric hospitalizations have been reported by the IMPACT network, 667 (62%) of which were associated with influenza A. Children 0-23 months accounted for the largest proportion of influenza A hospitalizations (39%). Among the 403 hospitalizations due to influenza B, children 5-9 years accounted for the largest proportion of cases (31%).

Additionally, 185 ICU admissions and nine deaths have been reported to date. Children aged 0-23 months accounted for the greatest proportion of ICU cases (31%), followed by children aged 5-9 years (26%). Among the ICU cases with available information, 62% were due to influenza A and approximately 46% had no reported previous or concurrent medical conditions. All but one reported deaths were among children over the age of two.

Figure 7 - Cumulative numbers of pediatric hospitalizations (≤ 16 years of age) with influenza by type and age-group reported by the IMPACT network, Canada, weeks 2017-35 to 2018-20

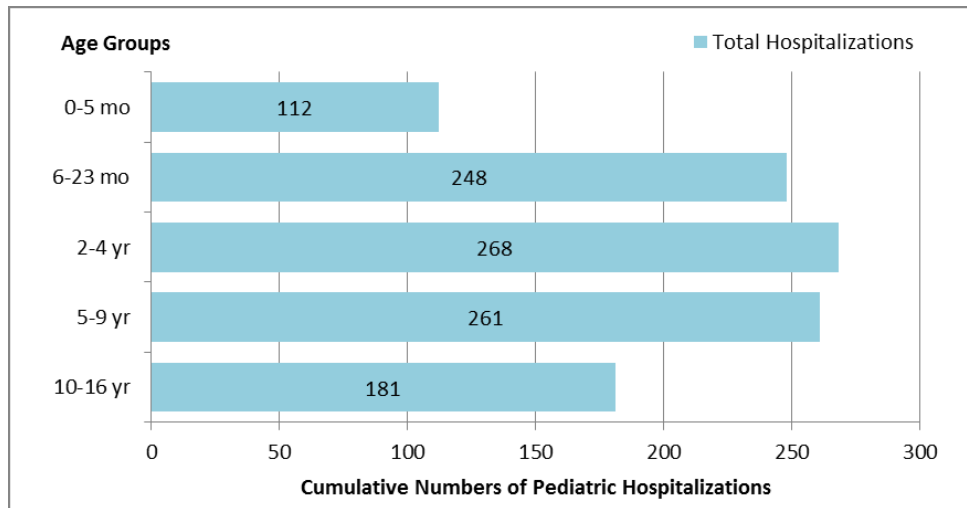
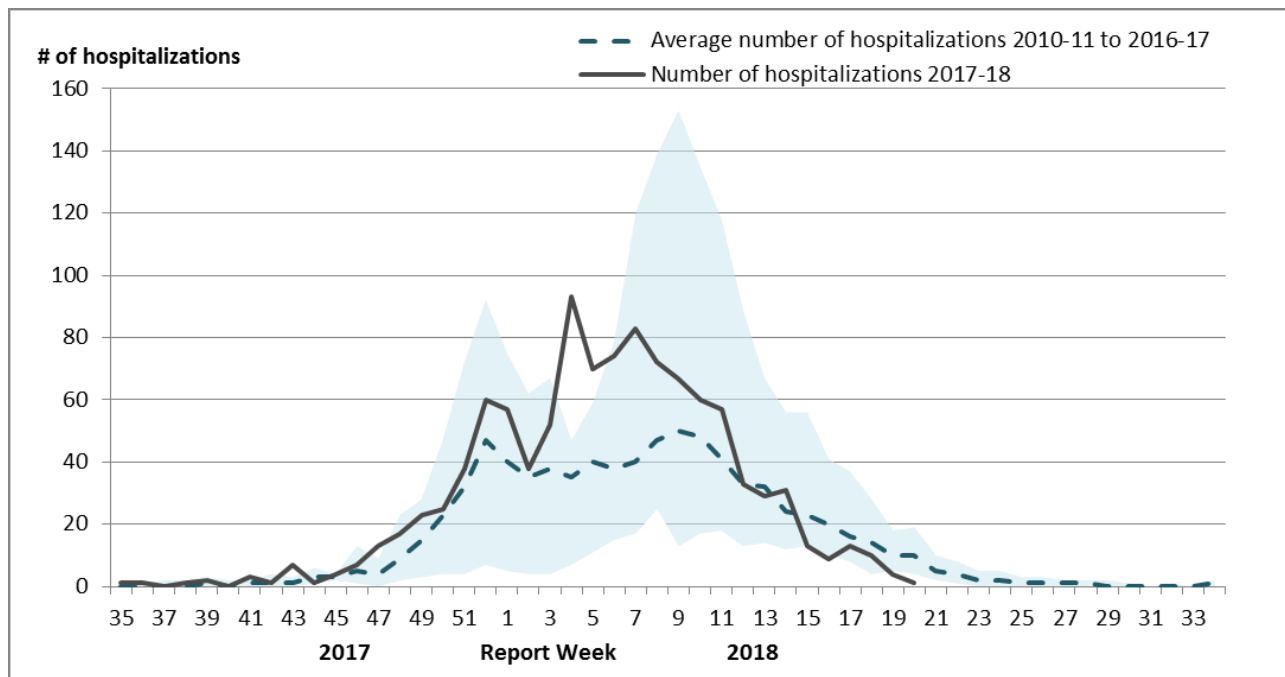


Figure 8 – Number of pediatric hospitalizations (≤ 16 years of age) with influenza reported by the IMPACT network, by week, Canada, weeks 2017-35 to 2018-20



The shaded area represents the maximum and minimum number of cases reported by week from seasons 2010-11 to 2016-17

Influenza Strain Characterizations

During the 2017-18 influenza season, the National Microbiology Laboratory (NML) has characterized 3,723 influenza viruses [1,535 A(H3N2), 306 A(H1N1)pdm09 and 1,882 B viruses] that were received from Canadian laboratories.

Antigenic Characterization

Among influenza viruses characterized by hemagglutination inhibition (HI) assay during the 2017-18 season, most viruses were antigenically similar to the cell-culture propagated reference strains recommended by WHO.

Table 2 – Influenza antigenic strain characterizations, Canada, weeks 2017-35 to 2018-20

Strain Characterization Results	Count	Description
Influenza A (H3N2)		
A/Hong Kong/4801/2014-like	302	Viruses antigenically similar to A/Hong Kong/4801/2014, the A(H3N2) component of the 2017-18 Northern Hemisphere's trivalent and quadrivalent vaccine.
Reduced titer to A/Hong Kong/4801/2014	95	These A(H3N2) viruses reacted poorly with antisera raised against cell-propagated A/Hong Kong/4801/2014, suggesting some antigenic differences.
Influenza A (H1N1)pdm09		
A/Michigan/45/2015-like	306	Viruses antigenically similar to A/Michigan/45/2015, the A(H1N1)pdm09 component of the 2017-18 Northern Hemisphere's trivalent and quadrivalent influenza vaccine.
Influenza B		
B/Brisbane/60/2008-like (Victoria lineage)	24	Viruses antigenically similar to B/Brisbane/60/2008. B/Brisbane/60/2008 is the influenza B component of the 2017-18 Northern Hemisphere's trivalent and quadrivalent influenza vaccine.
Reduced titer to B/Brisbane/60/2008 (Victoria lineage)	54	These B/Victoria lineage viruses reacted poorly with antisera raised against cell-propagated B/Brisbane/60/2008, suggesting some antigenic differences.
B/Phuket/3073/2013-like (Yamagata lineage)	1,804	Viruses antigenically similar to B/Phuket/3073/2013, the additional influenza B component of the 2017-18 Northern Hemisphere quadrivalent influenza vaccine.

Genetic Characterization of A(H3N2) viruses

During the 2017-18 season, 1,138 A(H3N2) viruses did not grow to sufficient titers for antigenic characterization by HI assay. Therefore, genetic characterization was performed to determine to which genetic group they belong. Sequence analysis showed that 1,018 A(H3N2) viruses belonged to genetic group 3C.2a, 117 viruses belonged to subclade 3C.2a1 and three viruses belonged to the clade 3C.3a.

Additionally, of the 397 influenza A(H3N2) viruses that were antigenically characterized, 276 belonged to genetic group 3C.2a and 26 viruses belonged to subclade 3C.2a1. The 95 viruses that showed reduced titer to A/Hong Kong/4801/2014 belonged to genetic clade 3C.3a.

A/Hong Kong/4801/2014-like virus belongs to genetic group 3C.2a and is the influenza A/H3N2 component of the 2017-18 Northern Hemisphere influenza vaccine.

Genetic Characterization of Influenza B viruses

Of the 78 influenza B viruses characterized as B/ B/Brisbane/60/2008-like, 24 viruses were antigenically similar to the vaccine strain B/Brisbane/60/2008. Among the viruses characterized antigenically as having reduced titer to ferret antisera produced against cell-propagated B/Brisbane/60/2008, sequence analysis showed that 53 viruses had a two amino acid deletion in the HA gene. Sequencing is pending for the remaining virus isolate.

Antiviral Resistance

During the 2017-18 season, the National Microbiology Laboratory (NML) has tested 1,565 influenza viruses for resistance to oseltamivir and 1,561 viruses for resistance to zanamivir. All but three viruses (1 A(H1N1)pdm09, 1 A(H3N2) and 1 influenza B) were sensitive to oseltamivir and all but two influenza B viruses were sensitive to zanamivir (Table 3). The A(H1N1)pdm09 virus resistant to oseltamivir had a H275Y mutation.

Table 3 – Antiviral resistance by influenza virus type and subtype, Canada, weeks 2017-35 to 2018-20

Virus type and subtype	Oseltamivir		Zanamivir	
	# tested	# resistant (%)	# tested	# resistant (%)
A (H3N2)	558	1 (0.2%)	554	0 (0%)
A (H1N1)pdm09	235	1 (0.4%)	235	0 (0%)
B	772	1 (0.1%)	772	2 (0.3%)
TOTAL	1565	3 (0.2%)	1561	2 (0.1%)

Note: Since the 2009 pandemic, all circulating influenza A viruses have been resistant to amantadine, and it is therefore not currently recommended for use in the treatment of influenza. During the 2017-18 season, all but eight influenza A viruses that were tested for resistance to amantadine were resistant.

Provincial and International Influenza Reports

- Alberta – [Influenza Surveillance Report](#)
- British Columbia – [Influenza Surveillance](#)
- Manitoba – [Manitoba – Seasonal Influenza Reports](#)
- New Brunswick – [Influenza Surveillance Reports](#)
- Newfoundland and Labrador – [Surveillance and Disease Reports](#)
- Nova Scotia – [Respiratory Watch Report](#)
- Ontario – [Respiratory Pathogen Bulletin](#)
- Prince Edward Island – [Weekly Influenza Summary](#)
- Saskatchewan – [Influenza Reports](#)
- Québec – [Flash Grippe](#)
- Australia – [Influenza Surveillance Report](#)
- European Centre for Disease Prevention and Control – [Surveillance reports and disease data on seasonal influenza](#)
- New Zealand – [Influenza Weekly Update](#)
- Public Health England – [Weekly national flu reports](#)
- Pan-American Health Organization – [Influenza Situation Report](#)
- United States Centres for Disease Control and Prevention – [Weekly Influenza Surveillance Report](#)
- World Health Organization – [Influenza update](#)
- World Health Organization – [FluNet](#)

FluWatch Surveillance for the 2017-2018 Season – Notes and Definitions

The FluWatch report is compiled from a number of data sources. Surveillance information contained in this report is a reflection of the surveillance data available to FluWatch at the time of production. Delays in reporting of data may cause data to change retrospectively

Influenza/Influenza-like Illness (ILI) Activity

Influenza/ILI activity levels, as represented on the map, are assigned and reported by Provincial and Territorial Ministries of Health, based on laboratory confirmations, primary care consultations for ILI and reported outbreaks. ILI data may be reported through sentinel physicians, emergency room visits or health line telephone calls, and the determination of an increase is based on the assessment of the provincial/territorial epidemiologist. Maps from previous weeks, including any retrospective updates, are available in the mapping feature found in the [Weekly Influenza Reports](#).

Influenza/ILI Activity Level definitions

- 1 = No activity:** no laboratory-confirmed influenza detections in the reporting week, however, sporadically occurring ILI may be reported
- 2 = Sporadic:** sporadically occurring ILI and lab confirmed influenza detection(s) with **no outbreaks** detected within the influenza surveillance region†
- 3 = Localized:** (1) evidence of increased ILI* ; (2) lab confirmed influenza detection(s); (3) **outbreaks** in schools, hospitals, residential institutions and/or other types of facilities occurring in **less than 50% of the influenza surveillance region**†
- 4 = Widespread:** (1) evidence of increased ILI*; (2) lab confirmed influenza detection(s);(3) **outbreaks** in schools, hospitals, residential institutions and/or other types of facilities occurring in **greater than or equal to 50% of the influenza surveillance region**†;

* More than just sporadic as determined by the provincial/territorial epidemiologist.

†Influenza surveillance regions within the province or territory as defined by the provincial/territorial epidemiologist

Laboratory-Confirmed Influenza Detections

Provincial, regional and some hospital laboratories report the weekly number of tests and detections of influenza and other respiratory viruses. Provincial public health laboratories submit demographic information for cases of influenza. This case-level data represents a subset of influenza detections reported through aggregate reporting. Specimens from NT, YT, and NU are sent to reference laboratories in the provinces for testing. Cumulative data includes updates to previous weeks. Discrepancies in values in Figures 2 and 3 may be attributable to differing data sources.

Syndromic/Influenza-like Illness Surveillance

FluWatch maintains a network of primary care practitioners who report the weekly proportion of ILI cases seen in their practice. Independent sentinel networks in BC, AB, and SK compile their data for reporting to FluWatch. Not all sentinel physicians report every week.

Definition of Influenza-like-illness (ILI): Acute onset of respiratory illness with fever and cough and with one or more of the following - sore throat, arthralgia, myalgia, or prostration which is likely due to influenza. In children under 5 years of age, gastrointestinal symptoms may also be present. In patients under 5 or 65 years and older, fever may not be prominent.

Influenza Outbreak Surveillance

Outbreaks of influenza or ILI are reported from all provinces and territories, according to the definitions below. However, reporting of outbreaks of influenza/ILI from different types of facilities differs between jurisdictions. All provinces and territories with the exception of NU report influenza outbreaks in long-term care facilities. All provinces and territories with the exception of NU and QC report outbreaks in hospitals.

Outbreak definitions:

Schools: Greater than 10% absenteeism (or absenteeism that is higher (e.g. >5-10%) than expected level as determined by school or public health authority) which is likely due to ILI.

Hospitals and residential institutions: two or more cases of ILI within a seven-day period, including at least one laboratory-confirmed case of influenza. Residential institutions include but are not limited to long-term care facilities (LTCF) and prisons.

Workplace: Greater than 10% absenteeism on any day which is most likely due to ILI.

Other settings: two or more cases of ILI within a seven-day period, including at least one laboratory-confirmed case of influenza; i.e. closed communities.

Serious Outcome Influenza Surveillance

Provincial/Territorial Influenza Hospitalizations and Deaths

Influenza-associated hospitalizations and deaths are reported by 8 Provincial and Territorial Ministries of Health (excluding BC, NU, ON and QC). The hospitalization or death does not have to be attributable to influenza, a positive laboratory test is sufficient for reporting. Only hospitalizations that require intensive medical care are reported by SK.

Due to changes in participating provinces and territories, comparisons to previous years should be done with caution.

Pediatric Influenza Hospitalizations and Deaths

The Immunization Monitoring Program Active (IMPACT) network reports the weekly number of hospitalizations with influenza among children admitted to one of the 12 participating paediatric hospitals in 8 provinces. These represent a subset of all influenza-associated pediatric hospitalizations in Canada.

Influenza Strain Characterizations and Antiviral Resistance

Provincial public health laboratories send a subset of influenza virus isolates to the National Microbiology Laboratory for strain characterization and antiviral resistance. These represent a subset of all influenza detections in Canada and the proportion of isolates of each type and subtype is not necessarily representative of circulating viruses.

Antigenic strain characterization data reflect the results of hemagglutination inhibition (HI) testing compared to the reference influenza strains recommended by [WHO](#). Genetic strain characterization data are based on analysis of the sequence of the viral hemagglutinin (HA) gene.

Antiviral resistance testing is conducted by phenotypic and genotypic methods on influenza virus isolates submitted to the National Microbiology Laboratory. All isolates are tested for oseltamivir and zanamivir and a subset are tested for resistance to amantadine.

Abbreviations: Newfoundland/Labrador (NL), Prince Edward Island (PE), New Brunswick (NB), Nova Scotia (NS), Quebec (QC), Ontario (ON), Manitoba (MB), Saskatchewan (SK), Alberta (AB), British Columbia (BC), Yukon (YT), Northwest Territories (NT), Nunavut (NU).

This [report](#) is available on the Government of Canada Influenza webpage.

Ce [rapport](#) est disponible dans les deux langues officielles.

We would like to thank all the Fluwatch surveillance partners who are participating in this year's influenza surveillance program.