

Programmed by

DEPARTMENT OF ENERGY, MINES & RESOURCES

FISHERIES RESEARCH BOARD

and

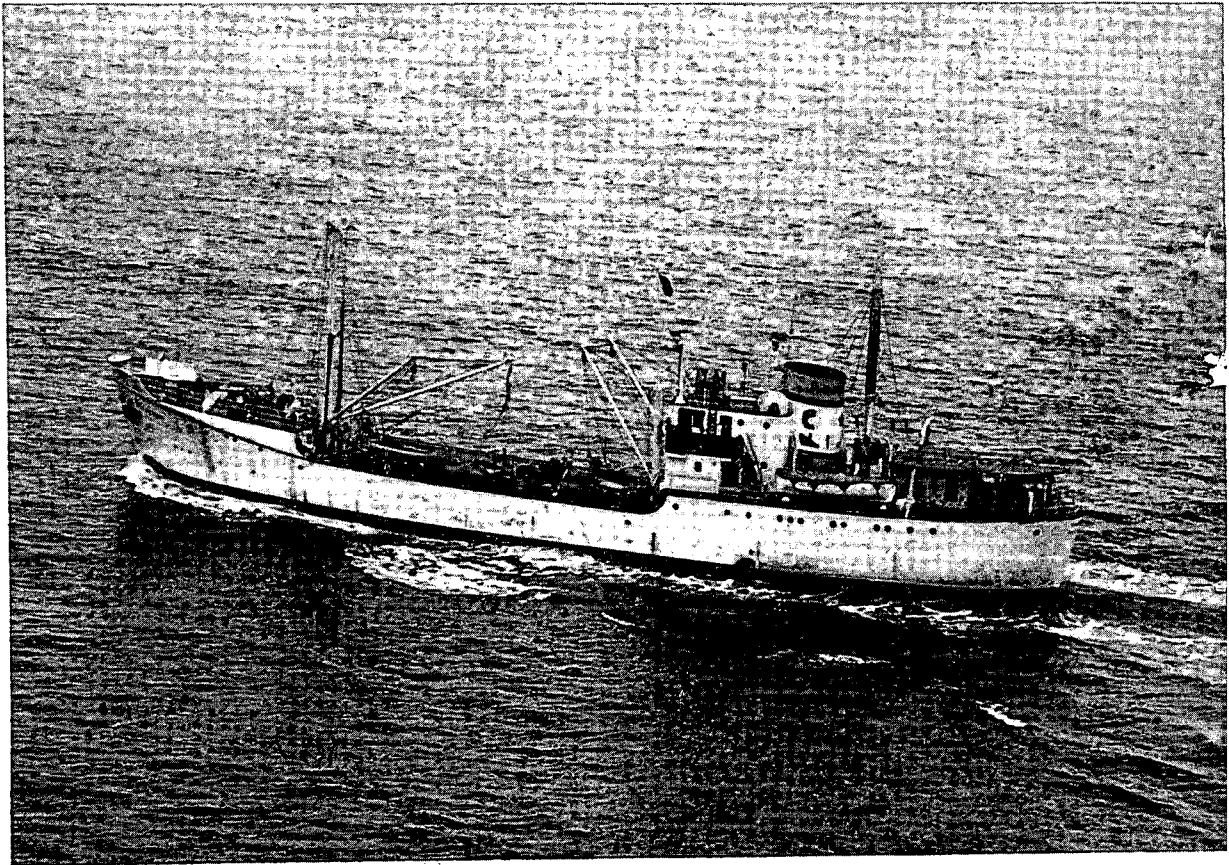
DEPARTMENT OF NATIONAL HEALTH & WELFARE

at

CANADA CENTRE FOR INLAND WATERS

BURLINGTON, ONTARIO

CANADA



M. V. "Theron"



LIMNOLOGICAL DATA REPORT NO. 3

LAKE ONTARIO

CRUISE 68 - 019, OCTOBER 5 - 9

CRUISE 68 - 022, OCTOBER 27 - 31

CRUISE 68 - 023, NOVEMBER 17 - 22

1968

**CANADA CENTRE FOR INLAND WATERS
BURLINGTON, ONTARIO**

©
Information Canada
Ottawa, 1970

FOREWORD

The year 1968 saw the firm establishment of the Canada Centre for Inland Waters as a major research Centre concerned with Canada's vital fresh water resources.

Three Federal Government agencies are involved in developing the Centre - the Department of Energy, Mines and Resources, the Fisheries Research Board and the Department of National Health and Welfare. The Department of Energy, Mines and Resources co-ordinates the program and provides support facilities to the participating agencies and to university scientists undertaking projects in collaboration with the Centre's agencies.

Between April and December, 1968, an extensive field program was conducted on the Great Lakes. Supported by two major ships, the CSS Limnos and the charter vessel M.V. Theron, the three participating departments conducted a number of interdisciplinary surveys. These surveys, along with data collected from fixed moorings of instruments in the lakes and other studies, are designed to develop a body of information which will provide vital data needed for determining optimum pollution abatement and water management programs for the Great Lakes.

INTRODUCTION

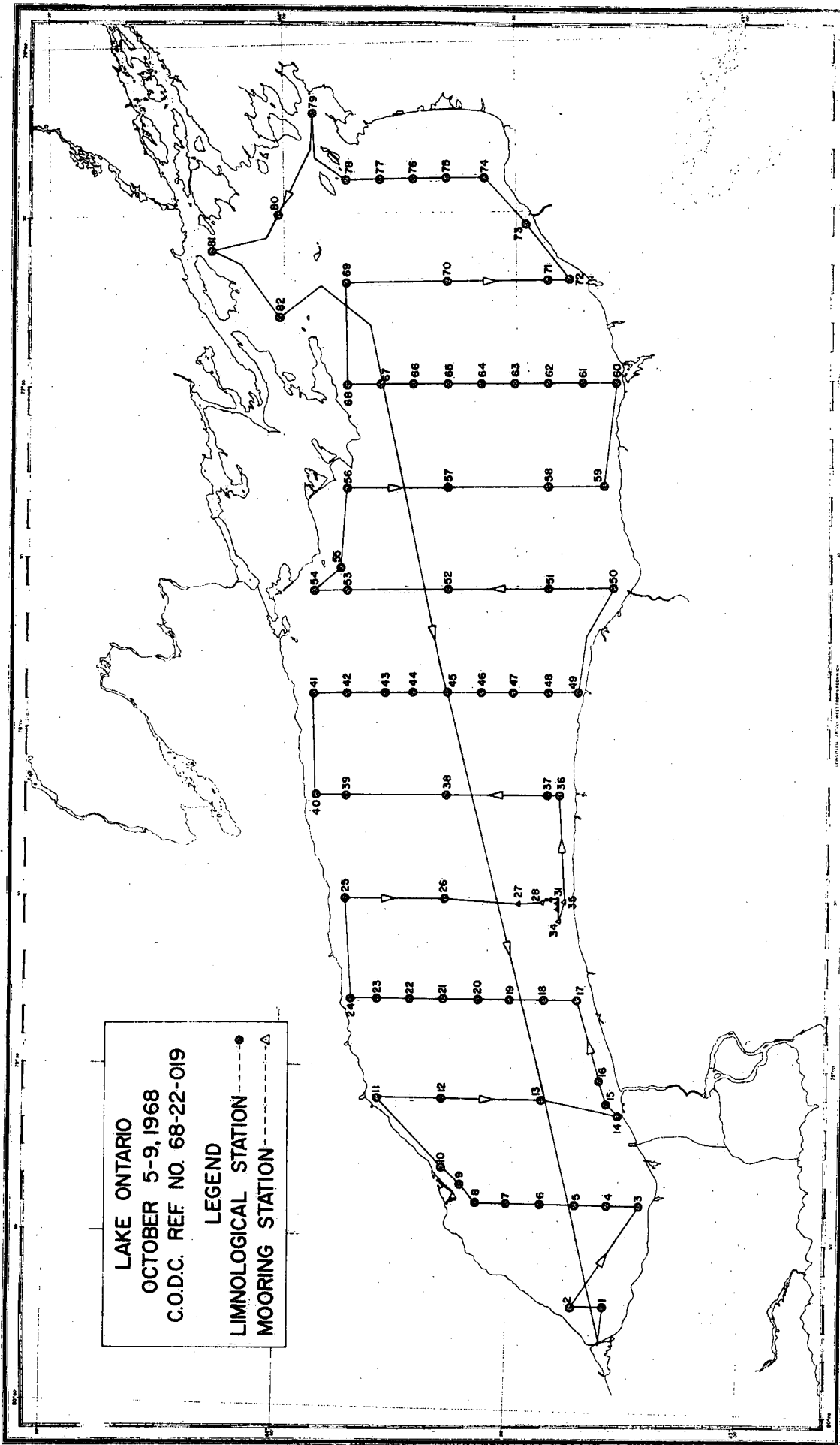
This report is one of a series listing bacteriological, biological, chemical and physical data for waters of Lake Ontario, observed by Government of Canada agencies during the period April 29 to November 22, 1968.

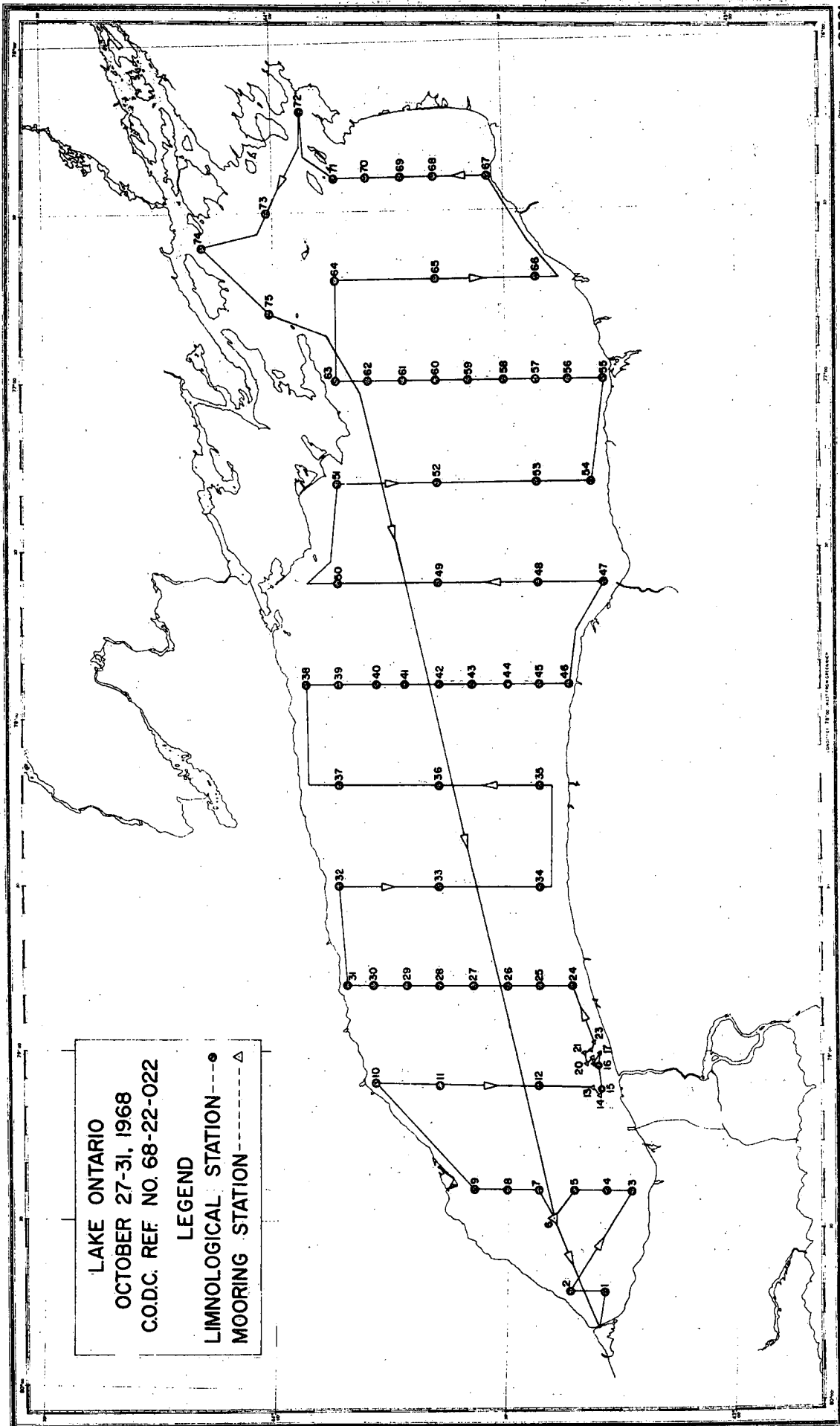
The 1968 surveys were carried out by 1) the Great Lakes Division, Inland Waters Branch, Department of Energy, Mines and Resources, 2) the Fisheries Research Board and 3) the Public Health Engineering Division, Department of National Health and Welfare. Staff from the three agencies carried out the work aboard the Canadian Scientific Ship "Limnos" and the chartered ship "M.V. Theron". Ship and launch operations were the responsibility of Marine Sciences Branch, Department of Energy, Mines and Resources.

Water quality data gathered during nine monitor cruises in 1968 are contained in the present series. Cruises related to seismic, geological and purely physical studies are not included in this series. Supplementary bathythermograph and weather data are available on request from Canada Centre for Inland Waters, P.O. Box 5050, Burlington, Ontario.

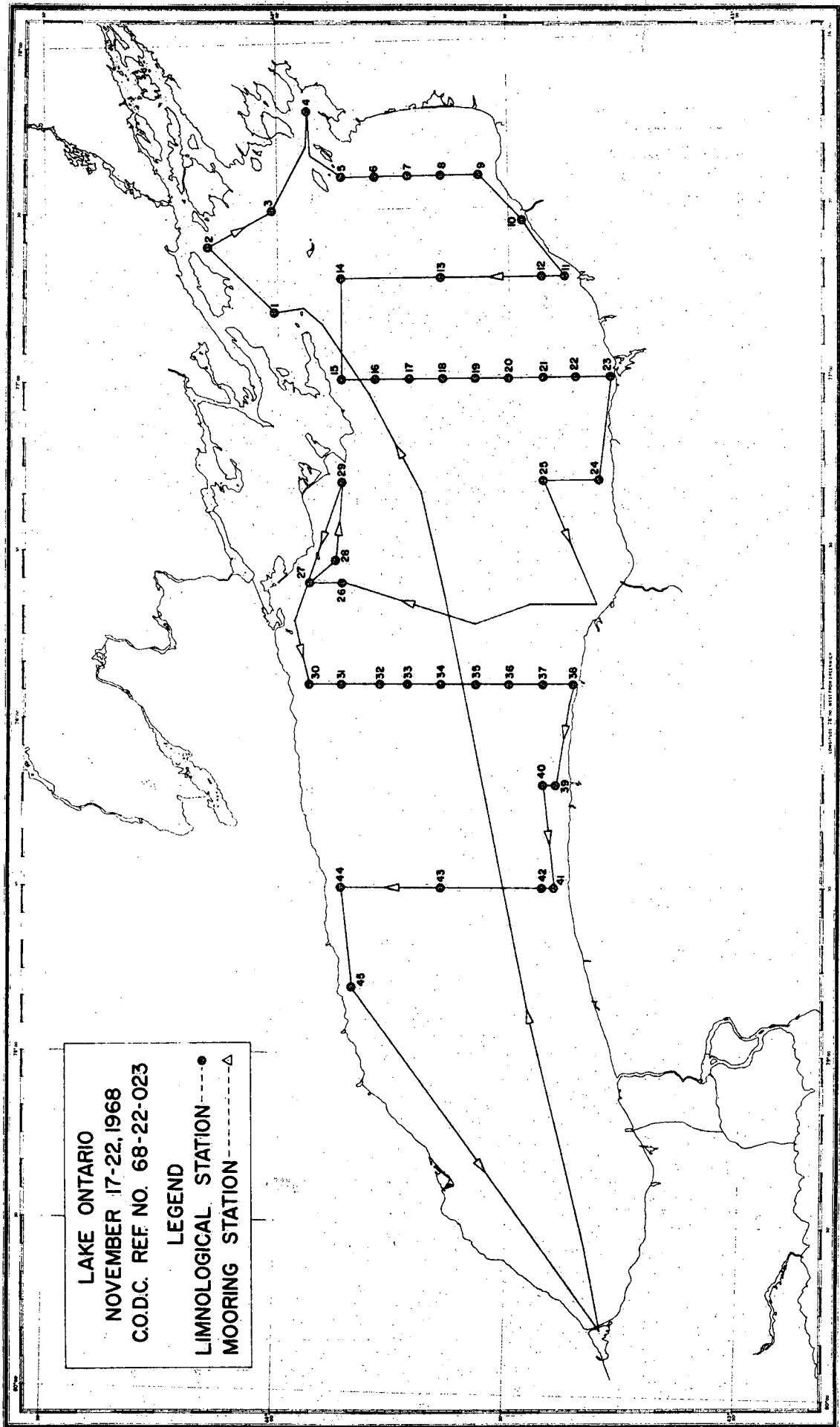
The bacteriological data have already been published in Manuscript Report No. KR68-3 of the Public Health Engineering Division, Department of National Health & Welfare. These data are again published in the present series of reports to facilitate comparison with the biological, chemical and physical data.

Accompanying diagrams show the geographical locations of the observations listed in this data record, together with the vessel's track and the locations of bathythermograph lowerings.





LAKE ONTARIO
 OCTOBER 27-31, 1968
 C.O.D.C. REF. NO. 68-22-022
 LEGEND
 LIMNOLOGICAL STATION ---●---
 MOORING STATION ---△---



LAKE ONTARIO
 NOVEMBER 17-22, 1968
 C.O.D.C. REF. NO. 68-22-023

LEGEND
 LIMNOLOGICAL STATION ●
 MOORING STATION ▲

Summary of the Cruises and Data listed for Lake Ontario.

Data Report No.	1		
Cruise No.	001	005	009
Dates (1968)	April 30 May 3	May 27 May 30	July 2 July 6
Cruise Type	Monitor	Monitor	Monitor
Vessel	Theron	Theron	Theron
No. of Stations	77	61	73
No. of BT Slides	77	61	73

Station Data:

Date/Time	X	X	X
Sounding	X	X	X
BT Slide No.	X	X	X
Sample Depth	X	X	X
Secchi Depth	X	X	X
Colour Forel-ule	X	X	X
Temperature	X	X	X
Temperature Classification	X	X	X
Turbidity	X	X	X
Specific Conductance	X	X	X
Residue, filtrable			
pH 25°C	X		
Alkalinity, total (titrimetric)			
Oxygen dissolved (Winkler)	X	X	X
Phosphate, total		X	X
Phosphate, reactive	X	X	X
Ammonia nitrogen, soluble F		X	X
Nitrate nitrite nitrogen F	X	X	X
Sulphate NF			
Fluoride NF			
Chloride NF			
Silica, reactive	X	X	X
Hardness, total			
Calcium NF atomic absorption			
Magnesium, NF			
Potassium, NF photometric			
Sodium NF photometric			
Chlorophyll A	X	X	X
Coliforms MF	X		
Fecal coliforms MF	X		
Standard plate count at 20°C	X		
Standard plate count at 35°C	X		

F - Filtered
NF - Non filtered

2			3		
012	014	016	019	022	023
July 23 July 28	Aug. 19 Aug. 22	Sept. 8 Sept. 13	Oct. 5 Oct. 9	Oct. 27 Oct. 31	Nov. 17 Nov. 22
Monitor Limnos	Monitor Limnos	Monitor Limnos	Monitor Theron	Monitor Theron	Monitor Theron
63	63	63	82	75	45
64	63	57	82	75	45

X	X	X	X	X	X
X	X	X	X	X	X
X	X	X	X	X	X
X	X	X	X	X	X
X	X	X	X	X	X
X	X	X	X	X	X
			X		X
			X		X
			X	X	X
			X	X	X
			X	X	X
			X		X
			X		X
			X	X	X
			X	X	X
			X		X
			X		X
			X	X	X
			X	X	X
			X		X
			X		X

Description of the Data Record

Information in the headings for each station:

1. C-REF-No.	5. LAT.	7. YEAR	11. No. DEPTHS
2. CONS. No.	6. LON.	8. MONTH	12. SOUNDING
3. COUNTRY		9. DAY	13. BT SLIDE No.
4. INSTITUTE		10. TIME	

Explanations:

- (1) Cruise number: the 1968 cruises are numbered consecutively from 001 to 023. The initial digit (0) is assigned to all Lake Ontario cruises.
- (2) Consecutive station number: the stations within each cruise are numbered in chronological order.
- (4) Institute: For filing purposes, the institute code was 22 (Inland Waters Branch, Department of Energy, Mines and Resources).
- (5) and (6) indicate the latitude and longitude of the vessel, in degrees, minutes and seconds, at the time of the observations.
- (7), (8) and (9) indicate the date of the observations according to Greenwich Mean Time.
- (10) Indicates the messenger time in hours and minutes (Greenwich Mean Time) for the first bottle cast at the station. The hours of each day are numbered from 00 to 23.
- (11) The number of depths at which observations were made. This should correspond to the number of depths actually listed. The count is listed to reveal omissions due to the loss of punch-cards.
- (12) The sounding is listed in meters, to the nearest tenth of a meter.
- (13) Indicates the bathythermograph slide number corresponding to the particular station. The slides are numbered consecutively within each cruise.

EXPLANATION OF THE DATA LISTING FOR EACH STATION

Parameter Name	Abbreviation (column heading)	Units used in the Data Reports	No. of Decimals Printed	Star System Code
Sample Depth	DEPTH	METRES	1	001
Secchi Depth	SECCHI	METRES	1	030
Colour Forel - ule	FOREL	forel-ule scale		031
Temperature	TEMP	°C	2	100
Temperature Classification	T CLAS	°C	2	109
Turbidity	TURB	Turbidity Units	1	123
Specific Conductance	SP CON	Micromhos 25°C		160
Residue, filtrable	F RES	mg/L	1	201
pH 25°	pH 25°	pH units	3	215
Alkalinity, total (titrimetric)	TT ALK	mgCaCO ₃ /L	1	219
Oxygen, dissolved (Winkler)	O ₂ W	mg O ₂ /L	2	245
Phosphate, total	T PO ₄	mg PO ₄ /L	3	260
Phosphate, reactive	SR PO ₄	mg PO ₄ /L	3	263
Ammonia nitrogen, soluble	NH ₃	mg N/L	3	270
Nitrate nitrite nitrogen F	TF NO ₃	mg N/L	3	276
Sulphate NF	S SO ₄	mg SO ₄ /L	1	280
Fluoride NF	F	mg F/L	3	289
Chloride NF	CL	mg Cl/L	1	290
Silica, reactive	R SiO ₂	mg SiO ₂ /L	3	295
Hardness, total	HARD	mg CaCO ₃ /L	1	300
Calcium NF	CA NFA	mg metal/L	3	324
Magnesium NF	MG NF	mg metal/L	3	354
Potassium NF	K NFS	mg metal/L	3	372
Sodium NF	NA NFS	mg metal/L	3	388
Chlorophyll A	CHLORA	mg/M ³	1	610
Coliforms MF	MF COL	colonies/100 ml.	*	700
Fecal Coliforms MF	MF FCO	colonies/100 ml.	*	703
Standard plate count at 20°C	SPC 20	colonies/ml.	*	720
Standard plate count at 35°C	SPC 35	colonies/ml.	*	721

* - Exponential Notation
 F - Filtered
 NF - Non Filtered

Note: The four bacteriological parameters are listed in exponential form:

$$130E02 = 1.30 \times 10^2 = 130.$$

$$100E00 = 1.00 \times 10^0 = 1.$$

$$000E00 = 0.00 \times 10^0 = 0.$$

Note: For some parameters, the analytical methods listed in the Star System manual (Glennie and MacLeod 1967, pp. 23-33) are not the methods used in these Data Reports.

Methods of Sampling and Measurement

Water sampling was carried out on the port side of the vessel, amidships, where a davit and a "chains" platform were installed. A small wooden deckhouse provided shelter for reading the thermometers and for transferring water from the primary sampling devices to small bottles which were taken to the shipboard laboratory. The sampling procedure together with photographs of the equipment are published in Manuscript Report No. 67-1 of the Public Health Engineering Division, Department of National Health and Welfare.

Samples were collected at standard depths of 1, 5, 10, 20, 30, 50, 75, 100, 150, 200, and at 250 metres, where the depth of water permitted. The water sampling devices were metal Knudsen bottles with a capacity of 1.2 litres, and polyvinylchloride Van Dorn bottles with capacities of 2 and 3 litres. Oceanographic reversing thermometers, and rubber bulbs for bacteriological sampling, were mounted on the Knudsen bottles.

For bacteriological sampling, a sterile deflated pear-shaped rubber bulb was attached to a Knudsen bottle. A brass plug in the opening of the rubber bulb was pulled out by the reversing Knudsen bottle. (REF. 13, pp. 88-90).

Position Latitude and longitude was determined using radar ranges and bearings on identifiable shoreline features. Occasionally, dead-reckoning had to be used when the vessel was far from shore.

Sounding The depth of water at each station was measured with the ship's echo sounder. Corrections for the transducer depth have been applied.

Secchi depth is the depth of disappearance of a white disc, 30 centimetres in diameter, when it is lowered slowly into the water on the port side of the vessel.

Colour Secchi disc colour reported in Forel-ule scale.

Sample depth The length of wire was measured with a metre wheel using the water surface as the reference level. Wire-angle corrections were applied whenever corrections were greater than one metre.

Temperature Oceanographic reversing thermometers manufactured by Richter & Wiese of Germany were used in series at all the required depths. Later, each thermometer was read twice in the vessel's deckhouse. There were usually two thermometers on each Knudsen bottle. A single mean corrected temperature value is reported in this final data record, but the individual readings are kept on file at the Canada Centre for Inland Waters.

Additional temperature measurements were made with bathythermographs, and with a thermistor thermometer towed at a depth of approximately one metre while the ship was underway. The BT and thermistor data are available on request from the Canada Centre for Inland Waters.

Turbidity NF - Nephelometric, Hach Turbidimeter, Jackson Units (REF. 12).

Specific conductance 25°C - Ohmometric, Radiometer Conductivity Meter Type CDM2 (REFS. 1, 19).

NF - Non filtered.

Residue filtrable (total dissolved solids) - Gravimetric (REF. 1).

pH 25°C - Corning pH meter, Model 10 (REFS. 1, 8).

Alkalinity, total (Titrimetric) - Potentiometric Titration (REF. 23).

Dissolved Oxygen was measured using the Winkler iodometric method.
Azide was not used. (REF. 14, pp. 67-78).

Total Phosphate NF - Photometric, autoanalyzer (REFS. 3, 4, 20).

Reactive Phosphate F - Photometric, autoanalyzer, double filtration,
stannous chloride + hydrazine sulphate (REFS. 3, 4, 20).

Ammonia nitrogen soluble F - Photometric, autoanalyzer (REF. 23).

Nitrate Nitrite Nitrogen F - Autoanalyzer, colorimetric cadmium reduction
(REFS. 6, 7).

Sulphate NF - Titrimetric, barium chloride, Thorin indicator (REFS. 2, 9).

Fluoride F - Autoanalyzer, colorimetric, SPADNS indicator (REFS. 1, 5).

Chloride NF - Autoanalyzer, colorimetric, mercury thiocyanate (REF. 15).

Reactive silica - Autoanalyzer, colorimetric, heteropoly blue (REFS. 1,
22).

Total hardness - Computed from calcium and magnesium determinations
(REF. 1).

Calcium NF - Atomic absorption spectrophotometry (REF. 18).

Magnesium NF - Atomic absorption spectrophotometry (REF. 18).

Potassium NF - Autoanalyzer, flame emission photometry (REF. 21).

Sodium NF - Autoanalyzer, flame emission photometry (REF. 21).

Chlorophyll A - *in vivo* chlorophyll concentrations (REFS. 16, 17).

BACTERIOLOGICAL PARAMETERS

Storage conditions for bacteriological samples The analyses began within one or two hours after sampling, except for samples collected between midnight and 6.30 a.m. The night samples were stored at temperatures varying between 4 and 7°C for a maximum of 8 hours before their analyses commenced.

F - Filtered.

NF - Non filtered.

Coliform density determinations were obtained by membrane filtration techniques using Bacto-m Endo MF Broth. Membranes were incubated at 35°C for 20±2 hours in an atmosphere of saturated humidity. Coliform densities were recorded in terms of coliforms per 100 ml. of water sample. (REF. 1, p. 615).

Fecal coliform density determinations were obtained by membrane filtration techniques using Bacto-m FC Broth. Membranes were incubated in 44.5°C waterbath for 24±2 hours. Fecal coliform densities were recorded in terms of fecal coliforms per 100 ml. of water sample (REF. 10).

Standard plate counts The American Public Health Association Standard Methods (REF. 1, p. 592), Standard Plate Count procedure was used for the estimation of total bacterial (viable) numbers at 35°C and 20°C. Bacto-Plate Count Agar was the medium used. Total viable counts were read at 24±2 hours for plates incubated at 35°C and 48±3 hours for plates incubated at 20°C. Counts were calculated and recorded as standard plate counts per ml. of water at the specified temperature.

PROGRAM CO-ORDINATION

Physical Limnology

Dr. R.K. Lane (G.L.D.)
Mr. D.G. Robertson (G.L.D.)

Limnogeology

Dr. P.G. Sly (G.L.D.)
Mr. W. Warwick (G.L.D.)

Water Quality

Dr. V.K. Chawla (W.Q.D.)

Bacteriology

Mr. B.J. Dutka (P.H.E.D.)
Mr. H.R. van Otterloo (P.H.E.D.)

Chlorophyll & Plankton

Mr. H.F. Nicholson (F.R.B.)

Operations

Mr. H.B. Macdonald (G.L.D.)

Ship Support

Mr. A. Quirk (M.S.B.)

Engineering Support

Mr. K.N. Birch (G.L.D.)
Mr. H.A. Savile (G.L.D.)

Computer & Data Services

Mr. D.M. Francis (G.L.D.)
Mr. W. Nagel (G.L.D.)

(G.L.D.) Great Lakes Division, Department of Energy, Mines and Resources.
(W.Q.D.) Water Quality Division, Department of Energy, Mines and Resources.
(P.H.E.D.) Public Health Engineering Division, Department of National Health and Welfare
(F.R.B.) Fisheries Research Board, Department of Fisheries and Forestry.
(M.S.B.) Marine Sciences Branch, Department of Energy, Mines and Resources.

Other Participating Agencies

The Canadian Oceanographic Data Centre produced and distributed the preliminary data records, and published final reports in the present series.

The Meteorological Branch of the Department of Transport provided meteorological instruments, and trained the personnel who carried out the weather observations.

Captain D. Butler and crew of Marine Sciences Branch, operated the Canadian Scientific Ship "Limnos" and Captain H.L. Maro and crew operated the chartered ship "M.V. Theron" in support of the limnological programs.

REFERENCES

1. American Public Health Association. 1965. Standard Methods for the Examination of Water and Wastewater. 12th ed. American Public Health Association, New York.
2. American Society for Testing and Materials. 1966. Book of ASTM Standards Part 23: Industrial Water; Atmospheric Analysis. American Society for Testing and Materials, Philadelphia.
3. Armstrong, F.A.J. and E.C. LaFond. 1966. Chemical Nutrient Concentrations and their Relationship to Internal Waves and Turbidity off Southern California, *Limnol. Oceanogr.*, 11 (4) pp. 538-547.
4. Armstrong, F.A.J., C.R. Stearns and J.P.H. Stickland. 1967. The Measurement of Upwelling and Subsequent Biological Processes by Means of the Technicon Autoanalyzer and Associated Equipment. *Deep-Sea Research*, 1967, vol. 14, pp. 381-389.
5. Bellack, E. and P.J. Schouboe. 1958. Rapid Photometric Determination of Fluoride with SPADNS - Zirconium Lake. *Anl. Chem.*, 30: p. 2032.
6. Bendschneider, K. and R.J. Robinson. 1952. A New Spectrophotometric Method for the Determination of Nitrite in Sea Water. *J. Mar. Res.*, 11, pp. 87-96.
7. Brewer, P.G. and J.P. Riley. 1965. The Automatic Determination of Nitrate in Sea Water. *Deep Sea Research*, vol. 12, pp. 765-772.
8. Corning Scientific Instruments. 1965. Expanded-Scale pH meter. Corning Glass Works, Corning, N.Y.
9. Fritz, J.S. and S.S. Yamamura. 1955. Rapid Microtitration of Sulfate. *Analytical Chemistry*, vol. 27, no. 9, p. 1461.
10. Geldreich, E.E., H.F. Clark, C.B. Huff and B.C. Best. 1965. A Fecal Coliform Medium for the Membrane single space Filter Technique. *JAWWA*, 57: pp. 208-214.
11. Glennie, C.J. and T.M. MacLeod. 1967. The Star system for storage and retrieval of scientific data. Canadian Oceanographic Data Centre, Ottawa.

12. Hach Chemical Company. Laboratory Turbidimeter Model 1860. Hach Chemical Company, Ames, Iowa.
13. I.J.C. Agencies. 1966. Working Committee on Methodology. A digest of analytical methods employed by laboratories associated with International Joint Commission Research on the Great Lakes, 135 pp.
14. I.J.C. Agencies. 1968. Working Committee on Methodology. Revised analytical methods employed by laboratories associated with International Joint Commission Research on the Great Lakes. 89 pp.
15. Iwasaki, Utsumi and Ozawa. 1952. New Colorimetric Determination of Chloride Using Mercuric Thiocyanate and Ferric Ion. Bulletin, Chemical Soc. Japan, vol. 25: p. 226
16. Lorenzen, Carl J. 1966. A method for the continuous measurement of *in vivo* chlorophyll concentrations. Deep-Sea Research, vol. 13, pp. 223 and 227.
17. Parsons, T.R. and J.D.H. Strickland. 1963. Discussion of Spectrophotometric Determination of Marine-plant Pigments, with Revised Equations for Ascertaining Chlorophylls and Carotenoids. Journal of Marine Research, 21 (3).
18. Perkin-Elmer Corp. 1966. Analytical Methods for Atomic Absorption Spectrophotometry. Perkin-Elmer Corp., Norwalk, Connecticut.
19. Radiometer Copenhagen. Direct Reading Conductivity Meter Type CDM2. Radiometer Copenhagen, Denmark.
20. Technicon Corp. Private Communication.
21. Technicon Instruments Corp. 1967. Instruction Manual FPH-III. Technicon Instruments Corp., Ardsley, New York.
22. Technicon Instruments Corp. 1960. Autoanalyzer Methodology Silica, 11F (Water Analysis).
23. Thomas, J.F.J. and J.J. Lynch. 1960. Determination of Carbonate Alkalinity in Natural Waters. JAWWA, 52: pp. 259-268.

CRUISE 68 - 019

C-REF-NO 019
 CONS. NO 001
 COUNTRY 18
 INSTITUTE 22

LAT 43-17-18N
 LON 079-42-00W

YEAR 1968
 MONTH 10
 DAY 05
 TIME 1332

NO. DEPTHS 05
 SOUNDING 0274
 BT SLIDE NO 001

DEPTH	SECCHI	FOREL	TEMP	T CLAS	TURB	CON 25	02 W	T P04
1.0	4.0	6	6.04	0.00	0.3	339	11.19	0.056
5.0			6.03	0.01				
10.0			6.01	0.00	0.3	343	11.18	0.050
20.0			5.89	0.01				
25.0			5.85	0.00	0.2	350	11.15	0.049

DEPTH	SR P04	NH3	TFNO3	R SID2	CHLORA	MF COL	MF FCO	SPC 20
1.0	0.032	0.030	0.264	0.640		200E01	100E00	700E00
5.0								
10.0	0.036	0.010	0.218	0.660		200E01		260E01
20.0								
25.0	0.036	0.009	0.220	0.690		600E00	100E00	150E01

DEPTH	SPC 35	F RES	TT ALK	S SO4	CA NFA	MG NF	K NFS	NA NFS
1.0	550E01	202.0	94.8	29.5	42.000	8.200	1.370	12.100
5.0								
10.0	570E01	213.0	95.0	32.9	40.000	8.100	1.490	12.400
20.0								
25.0	410E01	208.0	95.1	29.8	42.000	8.200	1.470	12.800

DEPTH	PH 25	F	CL	HARD
1.0	7.700	0.114	27.3	138.6
5.0				
10.0	7.800	0.118	27.5	133.2
20.0				
25.0	7.800	0.127	27.4	138.6

C-REF-NO 019
 CONS. NO 002
 COUNTRY 18
 INSTITUTE 22

LAT 43-21-42N
 LON 079-42-00W

YEAR 1968
 MONTH 10
 DAY 05
 TIME 1435

NO. DEPTHS 03
 SOUNDING 0238
 BT SLIDE NO 002

DEPTH	SECCHI	FOREL	TEMP	T CLAS	TURB	CON 25	02 W	T PD4
1.0	3.0	9	5.26	0.01	0.5	397	11.39	0.073
10.0			4.95	0.01				
22.0			4.68	0.00				

DEPTH	SR PD4	NH3	TFNO3	R SIO2	CHLORA	MF COL	MF FCO	SPC 20
1.0	0.051	0.016	0.224	0.900		240E01	200E00	820E01
10.0						700E00		690E01
22.0						220E01	000E00	380E01

DEPTH	SPC 35
1.0	100E02
10.0	740E01
22.0	340E01

C-REF-NO 019
 CONS. NO 003
 COUNTRY 18
 INSTITUTE 22

LAT 43-13-00N
 LON 079-24-00W

YEAR 1968
 MONTH 10
 DAY 05
 TIME 1620

NO. DEPTHS 02
 SOUNDING 0113
 BT SLIDE NO 003

DEPTH	SECCHI	FOREL	TEMP	T CLAS	TURB	CON 25	02 W	T PD4
1.0	3.0	9	15.65	0.01	0.2	392	9.89	0.052
10.0			15.62		0.3	392	9.87	0.052

DEPTH	SR PD4	NH3	TFNO3	R SIO2	CHLORA	MF COL	MF FCO	SPC 20
1.0	0.014	0.011	0.015	0.205	86.3	150E01		200E01
10.0	0.015	0.014	0.011	0.165		300E00	000E00	380E01

DEPTH	SPC 35	F RES	TT ALK	S SO4	CA NFA	MG NF	K NFS	NA NFS
1.0	380E01	209.0	90.8	29.5	40.000	8.200	1.480	13.000
10.0	430E01	209.0	91.4	29.1	39.000	8.200	1.450	13.100

DEPTH	PH 25	F	CL	HARD
1.0	8.200	0.117	27.8	133.6
10.0	8.100	0.116	28.1	131.1

C-REF-NO 019
 CONS. NO 004
 COUNTRY 18
 INSTITUTE 22

LAT 43-17-12N
 LON 079-24-00W

YEAR 1968
 MONTH 10
 DAY 05
 TIME 1714

NO. DEPTHS 04
 SOUNDING 0747
 BT SLIDE NO. 004

DEPTH	SECCHI	FOREL	TEMP	T CLAS	TURB	CON 25	02 W	T P04
1.0	2.5	9	13.82	0.00	0.2	326	10.53	0.062
10.0								
50.0								
73.0								

DEPTH	SR P04	NH3	TFNO3	R SID2	CHLORA	MF COL	MF FCO	SPC 20
1.0	0.017	0.007	0.040	0.310		700E00	000E00	190E01
10.0						200E00		440E01
50.0						290E01		180E01
73.0						190E01	000E00	530E01

DEPTH	SPC 35
1.0	190E01
10.0	130E01
50.0	700E00
73.0	170E01

C-REF-NO 019
 CONS. NO 005
 COUNTRY 18
 INSTITUTE 22

LAT 43-21-24N
 LON 079-24-00W

YEAR 1968
 MONTH 10
 DAY 05
 TIME 1758

NO. DEPTHS 01
 SOUNDING 0945
 BT SLIDE NO 005

DEPTH	SECCHI	FOREL	TEMP	T CLAS	TURB	CON 25	02 W	T P04
1.0	4.0	7	8.02	0.01	0.1	325	11.11	0.032

DEPTH	SR P04	NH3	TFNO3	R SID2	CHLORA	MF COL	MF FCO	SPC 20
1.0	0.028	0.009	0.190	0.295				

DEPTH	SPC 35
1.0	

C-REF-NO 019
 CONS. NO 006
 COUNTRY 18
 INSTITUTE 22

LAT 43-26-00N
 LON 079-24-00W

YEAR 1968
 MONTH 10
 DAY 05
 TIME 1844

NO. DEPTHS 01
 SOUNDING 1036
 BT SLIDE NO 006

DEPTH	SECCHI	FOREL	TEMP	T CLAS	TURB	CON 25	02 W	T P04
1.0	6.0	5	6.07	0.00	0.1	336	11.64	0.041

DEPTH	SR P04	NH3	TFN03	R SIO2	CHLORA	MF COL	MF FCO	SPC 20
1.0	0.038	0.006	0.210	0.295				

DEPTH	SPC 35
1.0	

C-REF-NO 019
 CONS. NO 007
 COUNTRY 18
 INSTITUTE 22

LAT 43-30-18N
 LON 079-24-00W

YEAR 1968
 MONTH 10
 DAY 05
 TIME 1930

NO. DEPTHS 03
 SOUNDING 0900
 BT SLIDE NO 007

DEPTH	SECCHI	FOREL	TEMP	T CLAS	TURB	CON 25	02 W	T P04
1.0	5.0	5	5.54	0.00	0.1	335	11.47	0.049
25.0			4.13	0.00	0.1	339	12.56	0.069
90.0			3.86	0.01	0.1	339	10.95	0.174

DEPTH	SR P04	NH3	TFN03	R SIO2	CHLORA	MF COL	MF FCO	SPC 20
1.0	0.039	0.013	0.212	0.380		100E00		110E01
25.0	0.049	0.013	0.220	0.300				
90.0	0.114	0.006	0.218	1.250		300E00		820E01

DEPTH	SPC 35	F RES	TT ALK	S S04	CA NFA	MG NF	K NFS	NA NFS
1.0	700E00	217.0	94.8	29.1	42.000	8.200	1.450	12.800
25.0		215.0	94.2	31.8	42.000	8.200	1.370	12.600
90.0	110E01	209.0	95.7	29.1	42.000	8.200	1.350	12.400

DEPTH	PH 25	F	CL	HARD
1.0	7.800	0.126	27.9	138.6
25.0	7.900	0.109	27.7	138.6
90.0	7.800	0.116	27.5	138.6

C-REF-NO 019
 CONS. NO 008
 COUNTRY 18
 INSTITUTE 22

LAT 43-34-24N
 LON 079-24-00W

YEAR 1968
 MONTH 10
 DAY 05
 TIME 2026

NO. DEPTHS 04
 SOUNDING 0610
 BT SLIDE NO 008

DEPTH	SECCHI	FOREL	TEMP	T CLAS	TURB	CON 25	02 W	T P04
1.0	4.0	6	5.08	0.01	0.1	338	11.31	0.070
10.0								
50.0								
59.0								

DEPTH	SR P04	NH3	TFN03	R SIO2	CHLORA	MF COL	MF FCO	SPC 20
1.0	0.063	0.011	0.242	0.600		280E01		120E03
10.0						240E01		120E03
50.0						500E01		500E02
59.0						490E01	240E01	300E02

DEPTH	SPC 35
1.0	390E02
10.0	340E02
50.0	230E02
59.0	160E02

C-REF-NO 019
 CONS. NO 009
 COUNTRY 18
 INSTITUTE 22

LAT 43-36-24N
 LON 079-21-00W

YEAR 1968
 MONTH 10
 DAY 05
 TIME 2056

NO. DEPTHS 04
 SOUNDING 0494
 BT SLIDE NO 009

DEPTH	SECCHI	FOREL	TEMP	T CLAS	TURB	CON 25	02 W	T P04
0.0			4.50					
1.0	5.0	6						
10.0								
48.0								

DEPTH	SR P04	NH3	TFN03	R SIO2	CHLORA	MF COL	MF FCO	SPC 20
0.0								
1.0						100E00		340E01
10.0						130E01		260E01
48.0						210E01	000E00	210E01

DEPTH	SPC 35
0.0	
1.0	180E01
10.0	260E01
48.0	600E00

C-REF-NO 019
 CONS. NO 010
 COUNTRY 18
 INSTITUTE 22

LAT 43-38-54N
 LON 079-18-00W
 YEAR 1968
 MONTH 10
 DAY 05
 TIME 2126

NO. DEPTHS 03
 SOUNDING 0104
 BT SLIDE NO 010

DEPTH	SECCHI	FOREL	TEMP	T CLAS	TURB	CON 25	02 W	T P04
0.0			5.80					
1.0	5.0	6						
8.0								

DEPTH	SR P04	NH3	TFNO3	R SIO2	CHLORA	MF COL	MF FCO	SPC 20
0.0								
1.0							890E01	290E03
8.0							230E02	240E03

DEPTH	SPC 35
0.0	
1.0	170E03
8.0	180E03

C-REF-NO 019
 CONS. NO 011
 COUNTRY 18
 INSTITUTE 22

LAT 43-47-24N
 LON 079-05-42W
 YEAR 1968
 MONTH 10
 DAY 05
 TIME 2308

NO. DEPTHS 04
 SOUNDING 0158
 BT SLIDE NO 011

DEPTH	SECCHI	FOREL	TEMP	T CLAS	TURB	CON 25	02 W	T P04
0.0			6.00					
1.0								
10.0								
14.0								

DEPTH	SR P04	NH3	TFNO3	R SIO2	CHLORA	MF COL	MF FCO	SPC 20
0.0								
1.0							320E02	240E03
10.0								260E03
14.0							130E02	230E03

DEPTH	SPC 35
0.0	
1.0	140E03
10.0	800E02
14.0	790E02

C-REF-NO 019
 CONS. NO 012
 COUNTRY 18
 INSTITUTE 22

LAT 43-39-00N
 LON 079-06-00W

YEAR 1968
 MONTH 10
 DAY 06
 TIME 0013

NO. DEPTHS 03
 SOUNDING 1036
 BT SLIDE NO 012

DEPTH	SECCHI	FOREL	TEMP	T CLAS	TURB	CON 25	02 W	T P04
0.0			5.50					
1.0								
100.0								

DEPTH	SR P04	NH3	TFNO3	R SIO2	CHLORA	MF COL	MF FCO	SPC 20
0.0								
1.0						900E00		100E01
100.0						000E00		350E01

DEPTH	SPC 35
0.0	
1.0	120E01
100.0	110E01

C-REF-NO 019
 CONS. NO 013
 COUNTRY 18
 INSTITUTE 22

LAT 43-26-00N
 LON 079-06-00W

YEAR 1968
 MONTH 10
 DAY 06
 TIME 0153

NO. DEPTHS 03
 SOUNDING 0183
 BT SLIDE NO 013

DEPTH	SECCHI	FOREL	TEMP	T CLAS	TURB	CON 25	02 W	T P04
0.0			15.00					
1.0								
16.0								

DEPTH	SR P04	NH3	TFNO3	R SIO2	CHLORA	MF COL	MF FCO	SPC 20
0.0								
1.0						000E00		210E01
16.0						000E00		330E01

DEPTH	SPC 35
0.0	
1.0	130E01
16.0	140E01

C-REF-NO 019
 CONS. NO 014
 COUNTRY 18
 INSTITUTE 22

LAT 43-16-00N
 LON 079-08-48W
 YEAR 1968
 MONTH 10
 DAY 06
 TIME 0251

NO. DEPTHS 03
 SOUNDING 0137
 BT SLIDE NO 014

DEPTH	SECCHI	FOREL	TEMP	T CLAS	TURB	CON 25	02 W	T P04
0.0			16.20					
1.0								
11.0								

DEPTH	SR P04	NH3	TFNO3	R SIO2	CHLORA	MF COL	MF FCO	SPC 20
0.0								
1.0						230E02		570E02
11.0						170E02		420E02

DEPTH	SPC 35
0.0	
1.0	150E03
11.0	120E03

C-REF-NO 019
 CONS. NO 015
 COUNTRY 18
 INSTITUTE 22

LAT 43-17-42N
 LON 079-06-30W
 YEAR 1968
 MONTH 10
 DAY 06
 TIME 0317

NO. DEPTHS 03
 SOUNDING 0064
 BT SLIDE NO 015

DEPTH	SECCHI	FOREL	TEMP	T CLAS	TURB	CON 25	02 W	T P04
0.0			16.60					
1.0								
5.0								

DEPTH	SR P04	NH3	TFNO3	R SIO2	CHLORA	MF COL	MF FCO	SPC 20
0.0								
1.0						600E02	210E02	350E03
5.0						300E02	200E02	400E03

DEPTH	SPC 35
0.0	
1.0	200E04
5.0	170E04

C-REF-NO 019
 CONS. NO 016
 COUNTRY 18
 INSTITUTE 22

LAT 43-18-12N
 LON 079-02-24W

YEAR 1968
 MONTH 10
 DAY 06
 TIME 0343

NO. DEPTHS 03
 SOUNDING 0098
 BT SLIDE NO 016

DEPTH	SECCHI	FOREL	TEMP	T CLAS	TURB	CON 25	02 W	T P04
0.0			16.80					
1.0								
8.0								

DEPTH	SR P04	NH3	TFN03	R SIO2	CHLORA	MF COL	MF FCO	SPC 20
0.0								
1.0						330E02	160E02	520E03
8.0						280E02	160E02	440E03

DEPTH	SPC 35
0.0	
1.0	250E04
8.0	260E04

C-REF-NO 019
 CONS. NO 017
 COUNTRY 18
 INSTITUTE 22

LAT 43-21-42N
 LON 078-48-00W

YEAR 1968
 MONTH 10
 DAY 06
 TIME 0501

NO. DEPTHS 03
 SOUNDING 0549
 BT SLIDE NO 017

DEPTH	SECCHI	FOREL	TEMP	T CLAS	TURB	CON 25	02 W	T P04
1.0			15.54	0.01	0.1	323	9.69	0.050
10.0								
53.0								

DEPTH	SR P04	NH3	TFN03	R SIO2	CHLORA	MF COL	MF FCO	SPC 20
1.0	0.015	0.010	0.022	0.165		600E00	000E00	270E01
10.0						900E00		360E01
53.0						110E01	000E00	100E02

DEPTH	SPC 35
1.0	210E01
10.0	230E01
53.0	160E01

C-REF-NO 019
CONS. NO 018
COUNTRY 18
INSTITUTE 22

LAT 43-26-00N
 LON 078-48-00W
 YEAR 1968
 MONTH 10
 DAY 06
 TIME 0558

NO. DEPTHS 05
 SOUNDING 1250
 BT SLIDE NO 018

DEPTH	SECCHI	FOREL	TEMP	T CLAS	TURB	CON 25	02 W	T P04
1.0			10.88	0.00	0.1	332	10.34	0.037
10.0			8.97	0.01				
27.0			7.30	0.04	0.1	333	10.78	0.053
50.0								
122.0			3.77	0.01	0.1	337	12.06	0.067

DEPTH	SR P04	NH3	TFNO3	R SI02	CHLORA	MF COL	MF FCO	SPC 20
1.0	0.015	0.005	0.128	0.215		190E01	000E00	330E01
10.0						260E01		300E00
27.0	0.045	0.005	0.214	0.292				
50.0						500E00		390E01
122.0	0.051	0.016	0.228	0.810		250E01	000E00	190E01

DEPTH	SPC 35	F RES	TT ALK	S SO4	CA NFA	MG NF	K NFS	NA NFS
1.0	250E01	211.0	94.2	28.3	41.000	8.100	1.340	12.400
10.0	110E01							
27.0		182.0	94.5	29.5	41.000	8.100	1.360	12.500
50.0	340E01							
122.0	900E00	191.0	95.8	29.8	41.000	8.100	1.350	12.200

DEPTH	PH 25	F	CL	HARD
1.0	7.800	0.118	28.3	135.7
10.0				
27.0	7.900	0.114	28.1	135.7
50.0				
122.0	7.900	0.116	27.2	135.7

C-REF-NO 019
 CONS. NO 019
 COUNTRY 18
 INSTITUTE 22

LAT 43-30-18N
 LON 078-48-00W

YEAR 1968
 MONTH 10
 DAY 06
 TIME 0658

NO. DEPTHS 01
 SOUNDING 1463
 BT SLIDE NO 019

DEPTH	SECCHI	FOREL	TEMP	T CLAS	TURB	CON 25	02 W	T P04
0.0			8.00					

DEPTH	SR P04	NH3	TFNO3	R SIO2	CHLORA	MF COL	MF FCO	SPC 20
0.0								

DEPTH	SPC 35
0.0	

C-REF-NO 019
 CONS. NO 020
 COUNTRY 18
 INSTITUTE 22

LAT 43-34-36N
 LON 078-48-00W

YEAR 1968
 MONTH 10
 DAY 06
 TIME 0734

NO. DEPTHS 02
 SOUNDING 1448
 BT SLIDE NO 020

DEPTH	SECCHI	FOREL	TEMP	T CLAS	TURB	CON 25	02 W	T P04
1.0			7.82	0.00	0.1	336	11.79	0.043
142.0								

DEPTH	SR P04	NH3	TFNO3	R SIO2	CHLORA	MF COL	MF FCO	SPC 20
1.0	0.012	0.002	0.168	0.242		200E00		260E01
142.0						120E01		270E01

DEPTH	SPC 35
1.0	220E01
142.0	110E01

C-REF-NO 019
 CONS. NO 021
 COUNTRY 18
 INSTITUTE 22

LAT 43-39-00N
 LON 078-48-00W
 YEAR 1968
 MONTH 10
 DAY 06
 TIME 0810

NO. DEPTHS 01
 SOUNDING 1022
 BT SLIDE NO 021

DEPTH	SECCHI	FOREL	TEMP	T CLAS	TURB	CON 25	02 W	T P04
0.0			6.50					

DEPTH	SR P04	NH3	TFNO3	R SIO2	CHLORA	MF COL	MF FCO	SPC 20
0.0								

DEPTH	SPC 35
0.0	

C-REF-NO 019
 CONS. NO 022
 COUNTRY 18
 INSTITUTE 22

LAT 43-43-18N
 LON 078-48-00W
 YEAR 1968
 MONTH 10
 DAY 06
 TIME 0854

NO. DEPTHS 03
 SOUNDING 0716
 BT SLIDE NO 022

DEPTH	SECCHI	FOREL	TEMP	T CLAS	TURB	CON 25	02 W	T P04
1.0			7.76	0.02	0.1	350	11.28	0.036
40.0			4.05	0.04	0.1	340	12.64	0.050
69.0			4.35	0.02	0.2	343	13.01	0.057

DEPTH	SR P04	NH3	TFNO3	R SIO2	CHLORA	MF COL	MF FCO	SPC 20
1.0	0.010	0.015	0.182	0.375		140E01		700E00
40.0	0.025	0.002	0.222	0.320				
69.0	0.037	0.004	0.218	0.340		200E01		200E01

DEPTH	SPC 35	F RES	TT ALK	S SO4	CA NFA	MG NF	K NFS	NA NFS
1.0	190E01	187.0	95.0	29.5	41.000	8.100	1.340	12.400
40.0		181.0	94.1	29.1	41.000	8.200	1.310	12.300
69.0	100E01	187.0	94.7	29.1	41.000	8.100	1.310	12.300

DEPTH	PH 25	F	CL	HARD
1.0	7.900	0.121	27.5	135.7
40.0	7.900	0.109	27.1	136.1
69.0	8.000	0.114	27.1	135.7

C-REF-NO 019
 CONS. NO 023
 COUNTRY 18
 INSTITUTE 22

LAT 43-47-36N
 LON 078-48-00W

YEAR 1968
 MONTH 10
 DAY 06
 TIME 0942

NO. DEPTHS 03
 SOUNDING 0500
 BT SLIDE NO 023

DEPTH	SECCHI	FOREL	TEMP	T CLAS	TURB	CON 25	02 W	T P04
1.0			6.27	0.00	0.1	352	11.20	0.036
10.0								
48.0								

DEPTH	SR P04	NH3	TFNO3	R SIO2	CHLORA	MF COL	MF FCO	SPC 20
1.0	0.029	0.011	0.216	0.492		200E00	000E00	280E01
10.0						200E01		900E00
48.0						300E01	000E00	400E01

DEPTH	SPC 35
1.0	290E01
10.0	120E01
48.0	400E00

C-REF-NO 019
 CONS. NO 024
 COUNTRY 18
 INSTITUTE 22

LAT 43-51-00N
 LON 078-48-00W

YEAR 1968
 MONTH 10
 DAY 06
 TIME 1020

NO. DEPTHS 02
 SOUNDING 0189
 BT SLIDE NO 024

DEPTH	SECCHI	FOREL	TEMP	T CLAS	TURB	CON 25	02 W	T P04
1.0			5.10	0.00	0.2	347	11.86	0.065
17.0								

DEPTH	SR P04	NH3	TFNO3	R SIO2	CHLORA	MF COL	MF FCO	SPC 20
1.0	0.050	0.012	0.230	0.220	1.0	150E01	000E00	140E02
17.0						120E01		470E01

DEPTH	SPC 35
1.0	160E02
17.0	600E01

C-REF-NO 019
 CONS. NO 025
 COUNTRY 18
 INSTITUTE 22

LAT 43-52-00N
 LON 078-30-00W

YEAR 1968
 MONTH 10
 DAY 06
 TIME 1144

NO. DEPTHS 04
 SOUNDING 0369
 BT SLIDE NO 025

DEPTH	SECCHI	FOREL	TEMP	T CLAS	TURB	CON 25	02 W	T P04
0.0			5.40					
1.0	5.0	6						
10.0								
35.0								

DEPTH	SR P04	NH3	TFNO3	R SIO2	CHLORA	MF COL	MF FCO	SPC 20
0.0					1.0			
1.0						410E01		810E01
10.0						380E01		830E01
35.0						240E01	000E00	550E01

DEPTH	SPC 35
0.0	
1.0	260E02
10.0	260E02
35.0	110E02

C-REF-NO 019
 CONS. NO 026
 COUNTRY 18
 INSTITUTE 22

LAT 43-39-00N
 LON 078-30-00W

YEAR 1968
 MONTH 10
 DAY 06
 TIME 1317

NO. DEPTHS 03
 SOUNDING 1408
 BT SLIDE NO 026

DEPTH	SECCHI	FOREL	TEMP	T CLAS	TURB	CON 25	02 W	T P04
0.0			7.00					
1.0	4.5	5						
138.0								

DEPTH	SR P04	NH3	TFNO3	R SIO2	CHLORA	MF COL	MF FCO	SPC 20
0.0					1.4			
1.0						120E01		150E01
138.0						430E01		460E01

DEPTH	SPC 35
0.0	
1.0	900E00
138.0	190E01

C-REF-NO 019
 CONS. NO 027
 COUNTRY 18
 INSTITUTE 22

LAT 43-29-24N
 LON 078-30-54W

YEAR 1968
 MONTH 10
 DAY 06
 TIME 1443

NO. DEPTHS 03
 SOUNDING 1630
 BT SLIDE NO 027

DEPTH	SECCHI	FOREL	TEMP	T CLAS	TURB	CON 25	02 W	T P04
0.0			14.40					
7.0			14.41	0.00				
35.0			5.57	0.02				

DEPTH	SR P04	NH3	TFNO3	R SIO2	CHLORA	MF COL	MF FCO	SPC 20
0.0								
7.0								
35.0								

DEPTH	SPC 35
0.0	
7.0	
35.0	

C-REF-NO 019
 CONS. NO 028
 COUNTRY 18
 INSTITUTE 22

LAT 43-26-33N
 LON 078-30-24W

YEAR 1968
 MONTH 10
 DAY 06
 TIME 1532

NO. DEPTHS 03
 SOUNDING 1219
 BT SLIDE NO 028

DEPTH	SECCHI	FOREL	TEMP	T CLAS	TURB	CON 25	02 W	T P04
0.0			14.20					
10.0			14.07	0.02				
29.0			4.89	0.01				

DEPTH	SR P04	NH3	TFNO3	R SIO2	CHLORA	MF COL	MF FCO	SPC 20
0.0								
10.0								
29.0								

DEPTH	SPC 35
0.0	
10.0	
29.0	

C-REF-NO 019
CONS. NO 029
COUNTRY 18
INSTITUTE 22

LAT 43-26-00N
LON 078-30-00W

YEAR 1968
MONTH 10
DAY 06
TIME 1559

NO. DEPTHS 03
SOUNDING 0981
BT SLIDE NO 029

DEPTH	SECCHI	FOREL	TEMP	T CLAS	TURB	CON 25	02 W	T P04
0.0			15.20					
1.0	2.5	7						
97.0								

DEPTH	SR PD4	NH3	TFNO3	R SIO2	CHLORA	MF COL	MF FCO	SPC 20
0.0					3.3			
1.0						230E01	400E00	670E01
97.0						300E00	100E00	220E01

DEPTH	SPC 35
0.0	
1.0	130E02
97.0	160E01

C-REF-NO 019
CONS. NO 030
COUNTRY 18
INSTITUTE 22

LAT 43-25-24N
LON 078-29-58W

YEAR 1968
MONTH 10
DAY 06
TIME 1623

NO. DEPTHS 03
SOUNDING 0929
BT SLIDE NO 030

DEPTH	SECCHI	FOREL	TEMP	T CLAS	TURB	CON 25	02 W	T P04
0.0			15.40					
8.0			15.40	0.00				
24.0			10.81	0.06				

DEPTH	SR PD4	NH3	TFNO3	R SIO2	CHLORA	MF COL	MF FCO	SPC 20
0.0								
8.0								
24.0								

DEPTH	SPC 35
0.0	
8.0	
24.0	

C-REF-NO 019
 CONS. NO 031
 COUNTRY 18
 INSTITUTE 22

LAT 43-24-24N
 LON 078-30-00W

YEAR 1968
 MONTH 10
 DAY 06
 TIME 1647

NO. DEPTHS 04
 SOUNDING 0579
 BT SLIDE NO 031

DEPTH	SECCHI	FOREL	TEMP	T CLAS	TURB	CON 25	02 W	T P04
0.0			15.70					
1.0	2.0	8						
10.0								
56.0								

DEPTH	SR P04	NH3	TFNO3	R SIO2	CHLORA	MF COL	MF FCO	SPC 20
0.0								
1.0						480E01	220E01	170E02
10.0						110E01		500E01
56.0						300E01	300E00	240E01

DEPTH	SPC 35
0.0	
1.0	520E02
10.0	310E01
56.0	210E01

C-REF-NO 019
 CONS. NO 032
 COUNTRY 18
 INSTITUTE 22

LAT 43-24-30N
 LON 078-30-30W

YEAR 1968
 MONTH 10
 DAY 06
 TIME 1704

NO. DEPTHS 03
 SOUNDING 0579
 BT SLIDE NO 032

DEPTH	SECCHI	FOREL	TEMP	T CLAS	TURB	CON 25	02 W	T P04
0.0			15.70					
7.0			15.80	0.01				
24.0			13.64	0.00				

DEPTH	SR P04	NH3	TFNO3	R SIO2	CHLORA	MF COL	MF FCO	SPC 20
0.0								
7.0								
24.0								

DEPTH	SPC 35
0.0	
7.0	
24.0	

C-REF-NO 019
 CONS. NO 033
 COUNTRY 18
 INSTITUTE 22

LAT 43-24-24N
 LON 078-31-48W
 YEAR 1968
 MONTH 10
 DAY 06
 TIME 1747

NO. DEPTHS 03
 SOUNDING 0664
 BT SLIDE NO 033

DEPTH	SECCHI	FOREL	TEMP	T CLAS	TURB	CON 25	02 W	T P04
0.0			15.80					
15.0			14.30	0.02				
35.0			13.21	0.09				

DEPTH	SR P04	NH3	TFNO3	R SIO2	CHLORA	MF COL	MF FCO	SPC 20
0.0								
15.0								
35.0								

DEPTH	SPC 35
0.0	
15.0	
35.0	

C-REF-NO 019
 CONS. NO 034
 COUNTRY 18
 INSTITUTE 22

LAT 43-24-08N
 LON 078-33-54W
 YEAR 1968
 MONTH 10
 DAY 06
 TIME 1816

NO. DEPTHS 03
 SOUNDING 0658
 BT SLIDE NO 034

DEPTH	SECCHI	FOREL	TEMP	T CLAS	TURB	CON 25	02 W	T P04
0.0			15.70					
10.0			15.20	0.02				
28.0			11.85	0.04				

DEPTH	SR P04	NH3	TFNO3	R SIO2	CHLORA	MF COL	MF FCO	SPC 20
0.0								
10.0								
28.0								

DEPTH	SPC 35
0.0	
10.0	
28.0	

C-REF-NO 019
 CONS. NO 035
 COUNTRY 18
 INSTITUTE 22

LAT 43-23-39N
 LON 078-30-24W

YEAR 1968
 MONTH 10
 DAY 06
 TIME 1854

NO. DEPTHS 03
 SOUNDING 0366
 BT SLIDE NO 035

DEPTH	SECCHI	FOREL	TEMP	T CLAS	TURB	CON 25	02 W	T P04
0.0			16.00					
12.0			16.01	0.01				
28.0			13.12	0.01				

DEPTH	SR P04	NH3	TFNO3	R SIO2	CHLORA	MF COL	MF FCO	SPC 20
0.0								
12.0								
28.0								

DEPTH	SPC 35
0.0	
12.0	
28.0	

C-REF-NO 019
 CONS. NO 036
 COUNTRY 18
 INSTITUTE 22

LAT 43-24-24N
 LON 078-12-00W

YEAR 1968
 MONTH 10
 DAY 06
 TIME 2042

NO. DEPTHS 03
 SOUNDING 0463
 BT SLIDE NO 036

DEPTH	SECCHI	FOREL	TEMP	T CLAS	TURB	CON 25	02 W	T P04
1.0	5.0	5	15.99	0.00				
10.0			15.95	0.02				
44.0			5.19	0.00				

DEPTH	SR P04	NH3	TFNO3	R SIO2	CHLORA	MF COL	MF FCO	SPC 20
1.0						190E01	500E00	490E01
10.0						170E01		370E01
44.0						300E01	100E00	370E01

DEPTH	SPC 35
1.0	850E01
10.0	130E02
44.0	150E01

C-REF-NO 019
CONS. NO 037
COUNTRY 18
INSTITUTE 22

LAT 43-26-00N
LON 078-12-00W

YEAR 1968
MONTH 10
DAY 06
TIME 2103

NO. DEPTHS 02
SOUNDING 0768
BT SLIDE NO 037

DEPTH	SECCHI	FOREL	TEMP	T CLAS	TURB	CON 25	02 W	T P04
1.0	5.0	6	15.25	0.01				
75.0			8.98	0.20				

DEPTH	SR P04	NH3	TFNO3	R SIO2	CHLORA	MF COL	MF FCO	SPC 20
1.0					3.2	380E01		330E01
75.0						400E00	000E00	300E01

DEPTH	SPC 35
1.0	760E01
75.0	190E01

C-REF-NO 019
CONS. NO 038
COUNTRY 18
INSTITUTE 22

LAT 43-39-00N
LON 078-12-00W

YEAR 1968
MONTH 10
DAY 06
TIME 2230

NO. DEPTHS 02
SOUNDING 1524
BT SLIDE NO 038

DEPTH	SECCHI	FOREL	TEMP	T CLAS	TURB	CON 25	02 W	T P04
1.0			9.03	0.02				
148.0			3.78	0.01				

DEPTH	SR P04	NH3	TFNO3	R SIO2	CHLORA	MF COL	MF FCO	SPC 20
1.0					2.4	000E00		160E01
148.0						600E00		800E00

DEPTH	SPC 35
1.0	200E01
148.0	800E00

C-REF-NO 019
CONS. NO 039
COUNTRY 18
INSTITUTE 22

LAT 43-52-00N
LON 078-12-00W

YEAR 1968
MONTH 10
DAY 07
TIME 0001

NO. DEPTHS 02
SOUNDING 0503
BT SLIDE NO 039

DEPTH	SECCHI	FOREL	TEMP	T CLAS	TURB	CON 25	02 W	T P04
-------	--------	-------	------	--------	------	--------	------	-------

1.0			7.90	0.01				
48.0			8.79	0.08				

DEPTH	SR P04	NH3	TFNO3	R SIO2	CHLORA	MF COL	MF FCO	SPC 20
-------	--------	-----	-------	--------	--------	--------	--------	--------

1.0					1.9	000E00		190E01
48.0						500E00		260E01

DEPTH	SPC 35
-------	--------

1.0	190E01
48.0	170E01

C-REF-NO 019
CONS. NO 040
COUNTRY 18
INSTITUTE 22

LAT 43-56-00N
LON 078-12-00W

YEAR 1968
MONTH 10
DAY 07
TIME 0046

NO. DEPTHS 03
SOUNDING 0152
BT SLIDE NO 040

DEPTH	SECCHI	FOREL	TEMP	T CLAS	TURB	CON 25	02 W	T P04
-------	--------	-------	------	--------	------	--------	------	-------

1.0			8.96	0.01				
10.0			8.22	0.03				
14.0			8.02	0.01				

DEPTH	SR P04	NH3	TFNO3	R SIO2	CHLORA	MF COL	MF FCO	SPC 20
-------	--------	-----	-------	--------	--------	--------	--------	--------

1.0						300E00	000E00	130E01
10.0						150E01		680E01
14.0						900E00	000E00	950E01

DEPTH	SPC 35
-------	--------

1.0	700E00
10.0	820E01
14.0	750E01

C-REF-NO 019
 CONS. NO 041
 COUNTRY 18
 INSTITUTE 22

LAT 43-56-18N
 LON 077-54-00W

YEAR 1968
 MONTH 10
 DAY 07
 TIME 0236

NO. DEPTHS 03
 SOUNDING 0351
 BT SLIDE NO 041

DEPTH	SECCHI	FOREL	TEMP	T CLAS	TURB	CON 25	02 W	T P04
1.0			13.96	0.01	0.1	331	9.78	0.044
10.0			13.91	0.00	0.1	329	9.89	0.040
33.0			13.22	0.01	0.1	331	10.14	0.050

DEPTH	SR P04	NH3	TFNO3	R SIO2	CHLORA	MF COL	MF FCO	SPC 20
1.0	0.012	0.019	0.066	0.352	2.5	100E01		700E00
10.0	0.017	0.011	0.064	0.492		000E00		200E00
33.0	0.011	0.002	0.068	0.360		100E00	000E00	700E00

DEPTH	SPC 35	F RES	TT ALK	S SO4	CA NFA	MG NF	K NFS	NA NFS
1.0	110E01	184.0	91.2	34.5	40.000	8.100	1.310	12.700
10.0	600E00	190.0	91.2	28.7	40.000	8.100	1.340	12.600
33.0	900E00	182.0	91.6	27.9	39.000	8.100	1.380	12.700

DEPTH	PH 25	F	CL	HARD
1.0	8.000	0.114	27.7	133.2
10.0	8.100	0.113	27.7	133.2
33.0	8.100	0.116	28.0	130.7

C-REF-NO 019
 CONS. NO 042
 COUNTRY 18
 INSTITUTE 22

LAT 43-52-00N
 LON 077-54-00W

YEAR 1968
 MONTH 10
 DAY 07
 TIME 0328

NO. DEPTHS 03
 SOUNDING 0244
 BT SLIDE NO 042

DEPTH	SECCHI	FOREL	TEMP	T CLAS	TURB	CON 25	02 W	T P04
0.0								
1.0			13.76	0.03	0.1	335	10.14	0.028
22.0			12.52	0.00				

DEPTH	SR P04	NH3	TFNO3	R SIO2	CHLORA	MF COL	MF FCO	SPC 20
0.0					2.5			
1.0	0.004	0.048	0.064	0.224		310E01		120E01
22.0						000E00		300E00

DEPTH	SPC 35
0.0	
1.0	900E00
22.0	200E00

C-REF-NO 019
 CONS. NO 043
 COUNTRY 18
 INSTITUTE 22

LAT 43-47-00N
 LON 077-54-00W

YEAR 1968
 MONTH 10
 DAY 07
 TIME 0416

NO. DEPTHS 01
 SOUNDING 0960
 BT SLIDE NO 043

DEPTH	SECCHI	FOREL	TEMP	T CLAS	TURB	CON 25	02 W	T P04
0.0			11.80					

DEPTH	SR P04	NH3	TFNO3	R SIO2	CHLORA	MF COL	MF FCO	SPC 20
0.0					2.5			

DEPTH	SPC 35
0.0	

C-REF-NO 019
 CONS. NO 044
 COUNTRY 18
 INSTITUTE 22

LAT 43-43-18N
 LON 077-54-00W

YEAR 1968
 MONTH 10
 DAY 07
 TIME 0503

NO. DEPTHS 03
 SOUNDING 1250
 BT SLIDE NO 044

DEPTH	SECCHI	FOREL	TEMP	T CLAS	TURB	CON 25	02 W	T P04
1.0			12.20	0.03	0.1	284	10.50	0.050
35.0			7.53	0.04	0.1	336	11.97	0.030
122.0			5.95	0.02	0.1	336	12.36	0.062

DEPTH	SR P04	NH3	TFNO3	R SIO2	CHLORA	MF COL	MF FCO	SPC 20
1.0	0.012	0.007	0.072	0.216	2.2			
35.0	0.023	0.015	0.178	0.312				
122.0	0.032	0.004	0.170	0.504				

DEPTH	SPC 35	F RES	TT ALK	S SO4	CA NFA	MG MF	K NFS	NA NFS
1.0		195.0	91.8	28.3	39.000	8.000	1.350	12.500
35.0		190.0	93.2	29.5	40.000	8.100	1.330	12.400
122.0		194.0	94.8	29.8	40.000	8.100	1.380	12.500

DEPTH	PH 25	F	CL	HARD
1.0	8.100	0.126	27.6	130.3
35.0	7.900	0.110	27.3	133.2
122.0	7.800	0.112	27.5	133.2

C-REF-NO 019
 CONS. NO 045
 COUNTRY 18
 INSTITUTE 22

LAT 43-39-00N
 LON 077-54-00W

YEAR 1968
 MONTH 10
 DAY 07
 TIME 0612

NO. DEPTHS 02
 SOUNDING 1600
 BT SLIDE NO 045

DEPTH	SECCHI	FOREL	TEMP	T CLAS	TURB	CON 25	02 W	T P04
1.0			12.84	0.06				
142.0			3.81	0.02				

DEPTH	SR P04	NH3	TFNO3	R SIO2	CHLORA	MF COL	MF FCO	SPC 20
1.0					2.9	160E01		400E00
142.0						400E00		270E01

DEPTH	SPC 35
1.0	700E00
142.0	500E00

C-REF-NO 019
 CONS. NO 046
 COUNTRY 18
 INSTITUTE 22

LAT 43-34-42N
 LON 077-54-00W

YEAR 1968
 MONTH 10
 DAY 07
 TIME 0702

NO. DEPTHS 01
 SOUNDING 1676
 BT SLIDE NO 046

DEPTH	SECCHI	FOREL	TEMP	T CLAS	TURB	CON 25	02 W	T P04
1.0			14.05	0.00	0.1	326	9.86	0.063

DEPTH	SR P04	NH3	TFNO3	R SIO2	CHLORA	MF COL	MF FCO	SPC 20
1.0	0.023	0.034	0.048	0.112	2.7			

DEPTH	SPC 35
1.0	

C-REF-NO 019
 CONS. NO 047
 COUNTRY 18
 INSTITUTE 22

LAT 43-30-18N
 LON 077-54-00W

YEAR 1968
 MONTH 10
 DAY 07
 TIME 0739

NO. DEPTHS 01
 SOUNDING 1533
 BT SLIDE NO 047

DEPTH	SECCHI	FOREL	TEMP	T CLAS	TURB	CON 25	02 W	T P04
0.0			14.40					

DEPTH	SR P04	NH3	TFNO3	R SIO2	CHLORA	MF COL	MF FCO	SPC 20
0.0					4.9			

DEPTH	SPC 35
0.0	

C-REF-NO 019
 CONS. NO 048
 COUNTRY 18
 INSTITUTE 22

LAT 43-26-00N
 LON 077-54-00W

YEAR 1968
 MONTH 10
 DAY 07
 TIME 0828

NO. DEPTHS 03
 SOUNDING 1024
 BT SLIDE NO 048

DEPTH	SECCHI	FOREL	TEMP	T CLAS	TURB	CON 25	02 W	T P04
1.0					0.1	335	9.52	0.059
60.0					0.1	342	12.64	0.059
100.0					0.2	342	11.67	0.051

DEPTH	SR P04	NH3	TFNO3	R SIO2	CHLORA	MF COL	MF FCO	SPC 20
1.0	0.005	0.038	0.030	0.128	4.6	600E00		600E00
60.0	0.015	0.021	0.074	0.272				
100.0	0.040	0.018	0.214	0.444		400E00		800E00

DEPTH	SPC 35	F RES	TT ALK	S SO4	CA NFA	MG NF	K NFS	NA NFS
1.0	600E01	188.0	92.3	30.6	39.000	8.200	1.330	12.600
60.0		190.0	92.6	29.1	40.000	8.200	1.330	12.600
100.0	240E01	195.0	94.7	27.5	40.000	8.100	1.370	12.400

DEPTH	PH 25	F	CL	HARD
1.0	8.100	0.110	27.3	131.1
60.0	8.000	0.110	27.4	133.6
100.0	7.800	0.125	27.0	133.2

C-REF-NO 019
 CONS. NO 049
 COUNTRY 18
 INSTITUTE 22

LAT 43-22-00N
 LON 077-54-00W

YEAR 1968
 MONTH 10
 DAY 07
 TIME 0917

NO. DEPTHS 02
 SOUNDING 0110
 BT SLIDE NO 049

DEPTH	SECCHI	FOREL	TEMP	T CLAS	TURB	CON 25	02 W	T P04
1.0			15.32	0.01	0.2	328	9.47	0.046
10.0								

DEPTH	SR P04	NH3	TFNO3	R SIO2	CHLORA	MF COL	MF FCO	SPC 20
1.0	0.012	0.039	0.038	0.346	4.4	700E00	000E00	350E01
10.0						170E01	100E00	120E01

DEPTH	SPC 35
1.0	480E01
10.0	380E01

C-REF-NO 019
 CONS. NO 050
 COUNTRY 18
 INSTITUTE 22

LAT 43-17-18N
 LON 077-36-00W

YEAR 1968
 MONTH 10
 DAY 07
 TIME 1051

NO. DEPTHS 03
 SOUNDING 0174
 BT SLIDE NO 050

DEPTH	SECCHI	FOREL	TEMP	T CLAS	TURB	CON 25	02 W	T P04
1.0			16.55	0.00				
10.0			16.60	0.02				
15.0			16.57	0.01				

DEPTH	SR P04	NH3	TFNO3	R SIO2	CHLORA	MF COL	MF FCO	SPC 20
1.0						290E01	700E00	910E01
10.0						240E01		560E01
15.0						200E01	500E00	750E01

DEPTH	SPC 35
1.0	160E02
10.0	150E02
15.0	160E02

C-REF-NO 019
CONS. NO 051
COUNTRY 18
INSTITUTE 22

LAT 43-26-00N
LON 077-36-00W

YEAR 1968
MONTH 10
DAY 07
TIME 1153

NO. DEPTHS 02
SOUNDING 1515
BT SLIDE NO 051

DEPTH	SECCHI	FOREL	TEMP	T CLAS	TURB	CON 25	02 W	T P04
1.0			15.54	0.02				
148.0			3.80	0.02				

DEPTH	SR P04	NH3	TFNO3	R SIO2	CHLORA	MF COL	MF FCO	SPC 20
1.0					2.2	700E00		800E00
148.0						150E01		130E01

DEPTH	SPC 35
1.0	300E01
148.0	140E01

C-REF-NO 019
CONS. NO 052
COUNTRY 18
INSTITUTE 22

LAT 43-39-00N
LON 077-36-00W

YEAR 1968
MONTH 10
DAY 07
TIME 1324

NO. DEPTHS 02
SOUNDING 1219
BT SLIDE NO 052

DEPTH	SECCHI	FOREL	TEMP	T CLAS	TURB	CON 25	02 W	T P04
1.0	3.0	8	13.63	0.03				
120.0			3.90	0.01				

DEPTH	SR P04	NH3	TFNO3	R SIO2	CHLORA	MF COL	MF FCO	SPC 20
1.0					1.9	900E00		330E01
120.0						270E01		220E01

DEPTH	SPC 35
1.0	160E01
120.0	800E00

C-REF-NO 019
 CONS. NO 053
 COUNTRY 18
 INSTITUTE 22

LAT 43-52-00N
 LON 077-36-00W

YEAR 1968
 MONTH 10
 DAY 07
 TIME 1451

NO. DEPTHS 02
 SOUNDING 0442
 BT SLIDE NO 053

DEPTH	SECCHI	FOREL	TEMP	T CLAS	TURB	CON 25	02 W	T P04
1.0	3.0	9	16.64	0.00				
42.0			16.40					

DEPTH	SR P04	NH3	TFNO3	R SIO2	CHLORA	MF COL	MF FCO	SPC 20
1.0					1.7	200E00		800E00
42.0						200E00		200E00

DEPTH	SPC 35
1.0	700E00
42.0	500E00

C-REF-NO 019
 CONS. NO 054
 COUNTRY 18
 INSTITUTE 22

LAT 43-56-18N
 LON 077-36-00W

YEAR 1968
 MONTH 10
 DAY 07
 TIME 1534

NO. DEPTHS 03
 SOUNDING 0207
 BT SLIDE NO 054

DEPTH	SECCHI	FOREL	TEMP	T CLAS	TURB	CON 25	02 W	T P04
1.0	2.5	8	16.23	0.01				
10.0			16.22	0.00				
18.0			15.71	0.02				

DEPTH	SR P04	NH3	TFNO3	R SIO2	CHLORA	MF COL	MF FCO	SPC 20
1.0						300E00	000E00	230E01
10.0						500E00		250E01
18.0						000E00	000E00	300E00

DEPTH	SPC 35
1.0	120E01
10.0	140E01
18.0	500E00

C-REF-NO 019
 CONS. NO 055
 COUNTRY 18
 INSTITUTE 22

LAT 43-52-54N
 LON 077-32-00W

YEAR 1968
 MONTH 10
 DAY 07
 TIME 1635

NO. DEPTHS 03
 SOUNDING 0445
 BT SLIDE NO 055

DEPTH	SECCHI	FOREL	TEMP	T CLAS	TURB	CON 25	02 W	T P04
1.0	2.5	8	16.53	0.00				
10.0			16.53	0.00				
42.0			16.16	0.01				

DEPTH	SR P04	NH3	TFNO3	R SIO2	CHLORA	MF COL	MF FCO	SPC 20
1.0						130E01	000E00	380E01
10.0						700E00		280E01
42.0						500E00	000E00	430E01

DEPTH	SPC 35
1.0	130E01
10.0	150E01
42.0	900E00

C-REF-NO 019
 CONS. NO 056
 COUNTRY 18
 INSTITUTE 22

LAT 43-52-00N
 LON 077-18-00W

YEAR 1968
 MONTH 10
 DAY 07
 TIME 1746

NO. DEPTHS 03
 SOUNDING 0280
 BT SLIDE NO 056

DEPTH	SECCHI	FOREL	TEMP	T CLAS	TURB	CON 25	02 W	T P04
1.0	3.5	7	17.11	0.01				
10.0			17.12	0.00				
25.0			15.85	0.04				

DEPTH	SR P04	NH3	TFNO3	R SIO2	CHLORA	MF COL	MF FCO	SPC 20
1.0					2.2	270E01	000E00	290E01
10.0						170E01		400E01
25.0						190E01	100E00	410E01

DEPTH	SPC 35
1.0	160E01
10.0	130E01
25.0	270E01

C-REF-NO 019
 CONS. NO 057
 COUNTRY 18
 INSTITUTE 22

LAT 43-39-00N
 LON 077-18-00W

YEAR 1968
 MONTH 10
 DAY 07
 TIME 1914

NO. DEPTHS 02
 SOUNDING 1195
 BT SLIDE NO 057

DEPTH	SECCHI	FOREL	TEMP	T CLAS	TURB	CON 25	02 W	T P04
1.0	3.0	7	16.74	0.02				
116.0			3.84	0.02				

DEPTH	SR P04	NH3	TFNO3	R SIO2	CHLORA	MF COL	MF FCO	SPC 20
1.0					1.8	500E00		120E01
116.0						260E01		510E01

DEPTH	SPC 35
1.0	360E01
116.0	160E01

C-REF-NO 019
 CONS. NO 058
 COUNTRY 18
 INSTITUTE 22

LAT 43-26-00N
 LON 077-18-00W

YEAR 1968
 MONTH 10
 DAY 07
 TIME 2041

NO. DEPTHS 02
 SOUNDING 2036
 BT SLIDE NO 058

DEPTH	SECCHI	FOREL	TEMP	T CLAS	TURB	CON 25	02 W	T P04
1.0	2.0	7	15.90	0.01				
200.0			3.74	0.00				

DEPTH	SR P04	NH3	TFNO3	R SIO2	CHLORA	MF COL	MF FCO	SPC 20
1.0					2.0	200E00		500E01
200.0								370E01

DEPTH	SPC 35
1.0	140E01
200.0	390E01

C-REF-NO 019
 CONS. NO 059
 COUNTRY 18
 INSTITUTE 22

LAT 43-18-42N
 LON 077-18-00W

YEAR 1968
 MONTH 10
 DAY 07
 TIME 2221

NO. DEPTHS 03
 SOUNDING 0442
 BT SLIDE NO 059

DEPTH	SECCHI	FOREL	TEMP	T CLAS	TURB	CON 25	02 W	T P04
1.0	2.0	8	16.31	0.02				
10.0			16.20	0.04				
42.0			16.21	0.01				

DEPTH	SR P04	NH3	TFNO3	R SID2	CHLORA	MF COL	MF FCO	SPC 20
1.0						100E01	000E00	200E01
10.0						400E00		140E01
42.0						290E01	500E00	760E01

DEPTH	SPC 35
1.0	190E01
10.0	130E01
42.0	770E01

C-REF-NO 019
 CONS. NO 060
 COUNTRY 18
 INSTITUTE 22

LAT 43-17-12N
 LON 077-00-00W

YEAR 1968
 MONTH 10
 DAY 07
 TIME 2352

NO. DEPTHS 02
 SOUNDING 0122
 BT SLIDE NO 060

DEPTH	SECCHI	FOREL	TEMP	T CLAS	TURB	CON 25	02 W	T P04
1.0			16.26	0.01	0.2	326	9.25	0.082
10.0			16.27	0.03				

DEPTH	SR P04	NH3	TFNO3	R SID2	CHLORA	MF COL	MF FCO	SPC 20
1.0	0.020	0.015	0.035	0.136	2.2	550E01	500E00	950E01
10.0						440E01	700E00	840E01

DEPTH	SPC 35
1.0	990E01
10.0	940E01

C-REF-NO 019
 CONS. NO 061
 COUNTRY 18
 INSTITUTE 22

LAT 43-21-42N
 LON 077-00-00W

YEAR 1968
 MONTH 10
 DAY 08
 TIME 0035

NO. DEPTHS 02
 SOUNDING 0701
 BT SLIDE NO 061

DEPTH	SECCHI	FOREL	TEMP	T CLAS	TURB	CON 25	02 W	T P04
1.0			16.29	0.02				
68.0			4.53	0.01				

DEPTH	SR P04	NH3	TFNO3	R SIO2	CHLORA	MF COL	MF FCO	SPC 20
1.0					2.0	700E01		600E01
68.0						610E01		540E01

DEPTH	SPC 35
1.0	460E01
68.0	360E01

C-REF-NO 019
 CONS. NO 062
 COUNTRY 18
 INSTITUTE 22

LAT 43-26-00N
 LON 077-00-00W

YEAR 1968
 MONTH 10
 DAY 08
 TIME 0131

NO. DEPTHS 03
 SOUNDING 1768
 BT SLIDE NO 062

DEPTH	SECCHI	FOREL	TEMP	T CLAS	TURB	CON 25	02 W	T P04
1.0			16.13	0.00	0.1	328	9.30	0.048
45.0			4.95	0.01	0.1	345	12.26	0.055
173.0			3.76	0.00	0.1	346	11.84	0.074

DEPTH	SR P04	NH3	TFNO3	R SIO2	CHLORA	MF COL	MF FCO	SPC 20
1.0	0.005	0.005	0.052	0.128	1.7	260E01		310E01
45.0	0.044	0.004	0.226	1.260				
173.0	0.068	0.005	0.240	1.225		450E01		180E01

DEPTH	SPC 35	F RES	TT ALK	S SO4	CA NFA	MG NF	K NFS	NA NFS
1.0	210E01	189.0	90.7	27.9	39.000	8.100	1.320	12.600
45.0		189.0	94.1	27.5	41.000	8.200	1.320	12.600
173.0	900E00	197.0	96.0	28.3	42.000	8.200	1.330	12.600

DEPTH	PH 25	F	CL	HARD
1.0	8.100	0.117	27.2	130.7
45.0	7.800	0.115	27.2	136.1
173.0	7.800	0.106	27.2	138.6

C-REF-NO 019
 CONS. NO 063
 COUNTRY 18
 INSTITUTE 22

LAT 43-30-18N
 LON 077-00-00W

YEAR 1968
 MONTH 10
 DAY 08
 TIME 0223

NO. DEPTHS 01
 SOUNDING 2286
 BT SLIDE NO 063

DEPTH SECCHI FOREL TEMP T CLAS TURB CON 25 02 W T P04
 0.0 15.30

DEPTH SR P04 NH3 TFNO3 R SIO2 CHLORA MF COL MF FCO SPC 20
 0.0 2.0

DEPTH SPC 35
 0.0

C-REF-NO 019
 CONS. NO 064
 COUNTRY 18
 INSTITUTE 22

LAT 43-34-42N
 LON 077-00-00W

YEAR 1968
 MONTH 10
 DAY 08
 TIME 0306

NO. DEPTHS 01
 SOUNDING 1829
 BT SLIDE NO 064

DEPTH SECCHI FOREL TEMP T CLAS TURB CON 25 02 W T P04
 1.0 15.53 0.01 0.1 336 9.67 0.041

DEPTH SR P04 NH3 TFNO3 R SIO2 CHLORA MF COL MF FCO SPC 20
 1.0 0.006 0.015 0.058 0.166 2.0

DEPTH SPC 35
 1.0

C-REF-NO 019
 CONS. NO 065
 COUNTRY 18
 INSTITUTE 22

LAT 43-39-00N
 LON 077-00-00W

YEAR 1968
 MONTH 10
 DAY 08
 TIME 0349

NO. DEPTHS 02
 SOUNDING 1280
 BT SLIDE NO 065

DEPTH SECCHI FOREL TEMP T CLAS TURB CON 25 02 W T P04
 1.0 16.11 0.01
 125.0 3.87 0.00

DEPTH SR P04 NH3 TFNO3 R SIO2 CHLORA MF COL MF FCO SPC 20
 1.0 2.1 100E01 100E01
 125.0 400E00 100E01

DEPTH SPC 35
 1.0 130E01
 125.0 110E01

C-REF-NO 019
 CONS. NO 066
 COUNTRY 18
 INSTITUTE 22

LAT 43-43-18N
 LON 077-00-00W

YEAR 1968
 MONTH 10
 DAY 08
 TIME 0436

NO. DEPTHS 03
 SOUNDING 0914
 BT SLIDE NO 066

DEPTH	SECCHI	FOREL	TEMP	T CLAS	TURB	CON 25	02 W	T P04
1.0			16.63	0.01	0.1	338	9.44	0.029
44.0			5.37	0.00	0.1	352	11.95	0.053
88.0			4.10	0.01	0.2	350	11.45	0.084

DEPTH	SR P04	NH3	TFN03	R SID2	CHLORA	MF COL	MF FCO	SPC 20
1.0	0.004	0.007	0.036	0.136	2.0			
44.0	0.035	0.004	0.222	0.256				
88.0	0.061	0.008	0.242	0.792				

DEPTH	SPC 35	F RES	TT ALK	S SO4	CA NFA	MG NF	K NFS	NA NFS
1.0		192.0	88.6	27.9	39.000	8.200	1.320	12.800
44.0		196.0	93.6	28.3	42.000	8.200	1.320	12.700
88.0		198.0	96.4	32.2	43.000	8.400	1.320	12.600

DEPTH	PH 25	F	CL	HARD
1.0	8.100	0.108	27.8	131.1
44.0	7.800	0.105	27.5	138.6
88.0	7.800	0.116	27.5	142.0

C-REF-NO 019
 CONS. NO 067
 COUNTRY 18
 INSTITUTE 22

LAT 43-47-42N
 LON 077-00-00W

YEAR 1968
 MONTH 10
 DAY 08
 TIME 0536

NO. DEPTHS 02
 SOUNDING 0594
 BT SLIDE NO 067

DEPTH	SECCHI	FOREL	TEMP	T CLAS	TURB	CON 25	02 W	T P04
1.0			17.39	0.02				
57.0			6.74	0.00				

DEPTH	SR P04	NH3	TFN03	R SID2	CHLORA	MF COL	MF FCO	SPC 20
1.0					1.7	300E00		380E01
57.0						240E01		560E01

DEPTH	SPC 35
1.0	220E01
57.0	300E01

C-REF-NO 019
 CONS. NO 068
 COUNTRY 18
 INSTITUTE 22

LAT 43-52-00N
 LON 077-00-00W

YEAR 1968
 MONTH 10
 DAY 08
 TIME 0621

NO. DEPTHS 02
 SOUNDING 0152
 BT SLIDE NO 068

DEPTH	SECCHI	FOREL	TEMP	T CLAS	TURB	CON 25	02 W	T P04
1.0			16.95	0.04	0.1	327	9.08	0.056
13.0			16.94	0.01				

DEPTH	SR P04	NH3	TFN03	R SIO2	CHLORA	MF COL	MF FCO	SPC 20
1.0	0.013	0.021	0.026	0.224	1.6	500E00	400E00	180E01
13.0						120E01	000E00	700E00

DEPTH	SPC 35
1.0	300E01
13.0	800E00

C-REF-NO 019
 CONS. NO 069
 COUNTRY 18
 INSTITUTE 22

LAT 43-52-00N
 LON 076-42-00W

YEAR 1968
 MONTH 10
 DAY 08
 TIME 0753

NO. DEPTHS 02
 SOUNDING 0372
 BT SLIDE NO 069

DEPTH	SECCHI	FOREL	TEMP	T CLAS	TURB	CON 25	02 W	T P04
1.0			17.31	0.02				
35.0			17.19	0.01				

DEPTH	SR P04	NH3	TFN03	R SIO2	CHLORA	MF COL	MF FCO	SPC 20
1.0					1.5	180E01		600E00
35.0						300E00		430E01

DEPTH	SPC 35
1.0	240E01
35.0	270E01

C-REF-NO 019
 CONS. NO 070
 COUNTRY 18
 INSTITUTE 22

LAT 43-39-00N
 LON 076-42-00W

YEAR 1968
 MONTH 10
 DAY 08
 TIME 0921

NO. DEPTHS 02
 SOUNDING 1433
 BT SLIDE NO 070

DEPTH	SECCHI	FOREL	TEMP	T CLAS	TURB	CON 25	02 W	T P04
1.0			16.26	0.03				
140.0			3.87	0.01				

DEPTH	SR P04	NH3	TFNO3	R SIO2	CHLORA	MF COL	MF FCO	SPC 20
1.0					1.7	140E01		100E01
140.0						400E00		290E01

DEPTH	SPC 35
1.0	400E00
140.0	100E01

C-REF-NO 019
 CONS. NO 071
 COUNTRY 18
 INSTITUTE 22

LAT 43-26-00N
 LON 076-42-00W

YEAR 1968
 MONTH 10
 DAY 08
 TIME 1057

NO. DEPTHS 04
 SOUNDING 0610
 BT SLIDE NO 071

DEPTH	SECCHI	FOREL	TEMP	T CLAS	TURB	CON 25	02 W	T P04
1.0			16.49	0.02				
10.0			16.51	0.01				
50.0			15.21	0.01				
58.0			4.15	0.01				

DEPTH	SR P04	NH3	TFNO3	R SIO2	CHLORA	MF COL	MF FCO	SPC 20
1.0					1.9	750E01	160E01	340E01
10.0						740E01		590E01
50.0						160E01		110E01
58.0						310E01	800E00	680E01

DEPTH	SPC 35
1.0	560E01
10.0	570E01
50.0	120E01
58.0	360E01

C-REF-NO 019
 CONS. NO 072
 COUNTRY 18
 INSTITUTE 22

LAT 43-23-00N
 LON 076-42-00W

YEAR 1968
 MONTH 10
 DAY 08
 TIME 1140

NO. DEPTHS 03
 SOUNDING 0161
 BT SLIDE NO 072

DEPTH	SECCHI	FOREL	TEMP	T CLAS	TURB	CON 25	02 W	T P04
1.0	3.0	9	16.42	0.03				
10.0			16.43	0.01				
14.0			16.43	0.00				

DEPTH	SR P04	NH3	TFN03	R SID2	CHLORA	MF COL	MF FCO	SPC 20
1.0						110E01	200E00	560E01
10.0						250E01		180E01
14.0						330E01	200E00	520E01

DEPTH	SPC 35
1.0	530E01
10.0	180E01
14.0	620E01

C-REF-NO 019
 CONS. NO 073
 COUNTRY 18
 INSTITUTE 22

LAT 43-28-36N
 LON 076-32-06W

YEAR 1968
 MONTH 10
 DAY 08
 TIME 1252

NO. DEPTHS 03
 SOUNDING 0137
 BT SLIDE NO 073

DEPTH	SECCHI	FOREL	TEMP	T CLAS	TURB	CON 25	02 W	T P04
1.0	2.5	10	16.53	0.01				
10.0			16.54	0.00				
12.0			16.45					

DEPTH	SR P04	NH3	TFN03	R SID2	CHLORA	MF COL	MF FCO	SPC 20
1.0						170E02	190E01	920E02
10.0						210E02		800E02
12.0						200E02	130E01	150E03

DEPTH	SPC 35
1.0	180E03
10.0	140E03
12.0	210E03

C-REF-NO 019
 CONS. NO 074
 COUNTRY 18
 INSTITUTE 22

LAT 43-34-00N
 LON 076-24-00W

YEAR 1968
 MONTH 10
 DAY 08
 TIME 1358

NO. DEPTHS 03
 SOUNDING 0549
 BT SLIDE NO 074

DEPTH	SECCHI	FOREL	TEMP	T CLAS	TURB	CON 25	02 W	T P04
1.0	2.5	6	17.17	0.01	0.1	333	8.95	0.060
10.0			17.18	0.01				
53.0			8.84	0.03				

DEPTH	SR P04	NH3	TFNO3	R SIO2	CHLORA	MF COL	MF FCO	SPC 20
1.0	0.017	0.063	0.020	0.160	1.9	500E00	100E00	220E01
10.0						300E01		200E01
53.0						170E01	000E00	120E01

DEPTH	SPC 35
1.0	800E00
10.0	700E00
53.0	900E00

C-REF-NO 019
 CONS. NO 075
 COUNTRY 18
 INSTITUTE 22

LAT 43-39-00N
 LON 076-24-00W

YEAR 1968
 MONTH 10
 DAY 08
 TIME 1453

NO. DEPTHS 03
 SOUNDING 0990
 BT SLIDE NO 075

DEPTH	SECCHI	FOREL	TEMP	T CLAS	TURB	CON 25	02 W	T P04
1.0	4.0	7	16.65	0.02	0.2	329	9.11	0.056
70.0			4.84	0.03	0.1	336	12.06	0.060
97.0			4.22	0.01	0.1	341	11.70	0.074

DEPTH	SR P04	NH3	TFNO3	R SIO2	CHLORA	MF COL	MF FCO	SPC 20
1.0	0.011	0.041	0.020	0.192	1.9	170E01	100E00	400E00
70.0	0.048	0.020	0.190	0.320				
97.0	0.073	0.031	0.202	0.580		210E01	100E00	160E01

DEPTH	SPC 35	F RES	TT ALK	S SO4	CA NFA	MG NF	K NFS	NA NFS
1.0	100E01	182.0	90.7	26.7	40.000	8.200	1.300	12.800
70.0		179.0	93.7	31.0	42.000	8.200	1.300	12.600
97.0	300E00	184.0	94.9	30.6	42.000	8.100	1.300	12.600

DEPTH	PH 25	F	CL	HARD
1.0	8.100	0.114	27.5	133.6
70.0	7.900	0.122	27.3	138.6
97.0	7.800	0.114	27.1	138.2

C-REF-NO 019
 CONS. NO 076
 COUNTRY 18
 INSTITUTE 22

LAT 43-43-12N
 LON 076-24-00W

YEAR 1968
 MONTH 10
 DAY 08
 TIME 1557

NO. DEPTHS 03
 SOUNDING 0549
 BT SLIDE NO 076

DEPTH	SECCHI	FOREL	TEMP	T CLAS	TURB	CON 25	02 W	T PO4
1.0	2.8	6	16.53	0.00				
10.0			16.46	0.01				
52.0			8.01	0.01				

DEPTH	SR PO4	NH3	TFNO3	R SIO2	CHLORA	MF COL	MF FCO	SPC 20
1.0					1.9	600E00	200E00	540E01
10.0						110E01		600E00
52.0						320E01	130E01	360E01

DEPTH	SPC 35
1.0	220E01
10.0	400E00
52.0	270E01

C-REF-NO 019
 CONS. NO 077
 COUNTRY 18
 INSTITUTE 22

LAT 43-47-42N
 LON 076-24-00W

YEAR 1968
 MONTH 10
 DAY 08
 TIME 1634

NO. DEPTHS 01
 SOUNDING 0433
 BT SLIDE NO 077

DEPTH	SECCHI	FOREL	TEMP	T CLAS	TURB	CON 25	02 W	T PO4
0.0	3.5	7	17.00					

DEPTH	SR PO4	NH3	TFNO3	R SIO2	CHLORA	MF COL	MF FCO	SPC 20
0.0					1.8			

DEPTH	SPC 35
0.0	

C-REF-NO 019
 CONS. NO 078
 COUNTRY 18
 INSTITUTE 22

LAT 43-52-00N
 LON 076-24-00W

YEAR 1968
 MONTH 10
 DAY 08
 TIME 1709

NO. DEPTHS 03
 SOUNDING 0229
 BT SLIDE NO 078

DEPTH	SECCHI	FOREL	TEMP	T CLAS	TURB	CON 25	02 W	T P04
1.0	3.0	8	16.92	0.00	0.1	331	9.05	0.059
10.0			16.92	0.00				
21.0			16.89	0.01				

DEPTH	SR P04	NH3	TFN03	R SIO2	CHLORA	MF COL	MF FCO	SPC 20
1.0	0.027	0.051	0.030	0.232		500E00		170E01
10.0						400E00		530E01
21.0						100E00	100E00	200E01

DEPTH	SPC 35
1.0	800E00
10.0	260E01
21.0	210E01

C-REF-NO 019
 CONS. NO 079
 COUNTRY 18
 INSTITUTE 22

LAT 43-56-18N
 LON 076-12-00W

YEAR 1968
 MONTH 10
 DAY 08
 TIME 1826

NO. DEPTHS 03
 SOUNDING 0213
 BT SLIDE NO 079

DEPTH	SECCHI	FOREL	TEMP	T CLAS	TURB	CON 25	02 W	T P04
1.0	3.0	7	16.75	0.00	0.1	321	8.77	0.065
10.0			16.75	0.01	0.1	317	9.05	0.069
19.0			16.75	0.02	0.2	317	9.00	0.066

DEPTH	SR P04	NH3	TFN03	R SIO2	CHLORA	MF COL	MF FCO	SPC 20
1.0	0.030	0.044	0.033	0.458	1.9	600E00	200E00	100E01
10.0	0.038	0.042	0.150	0.456		300E00		160E01
19.0	0.036	0.071	0.032	0.460		700E00	100E00	500E00

DEPTH	SPC 35	F RES	TT ALK	S SO4	CA NFA	MG NF	K NFS	NA NFS
1.0	160E01	176.0	87.5	29.1	37.500	8.100	1.300	12.700
10.0	120E01	186.0	87.1	27.5	37.500	8.100	1.310	12.800
19.0	100E01	185.0	87.3	29.8	37.500	8.000	1.320	12.800

DEPTH	PH 25	F	CL	HARD
1.0	8.100	0.119	27.6	127.0
10.0	8.100	0.121	27.7	127.0
19.0	8.100	0.114	27.6	126.6

C-REF-NO 019
 CONS. NO 080
 COUNTRY 18
 INSTITUTE 22

LAT 44-00-42N
 LON 076-30-00W

YEAR 1968
 MONTH 10
 DAY 08
 TIME 1957

NO. DEPTHS 02
 SOUNDING 0262
 BT SLIDE NO 080

DEPTH	SECCHI	FOREL	TEMP	T CLAS	TURB	CON 25	02 W	T PD4
1.0	4.0	7	16.97	0.02	0.1	324	9.13	0.066
24.0			16.72	0.01				

DEPTH	SR PD4	NH3	TFNO3	R SID2	CHLORA	MF COL	MF FCO	SPC 20
1.0	0.034	0.068	0.110	0.356	1.7	100E01	100E01	440E01
24.0						300E00	000E00	700E00

DEPTH	SPC 35
1.0	100E01
24.0	400E00

C-REF-NO 019
 CONS. NO 081
 COUNTRY 18
 INSTITUTE 22

LAT 44-09-18N
 LON 076-36-00W

YEAR 1968
 MONTH 10
 DAY 08
 TIME 2111

NO. DEPTHS 03
 SOUNDING 0198
 BT SLIDE NO 081

DEPTH	SECCHI	FOREL	TEMP	T CLAS	TURB	CON 25	02 W	T PD4
1.0	3.0	8	16.37	0.02	0.2	325	9.20	0.061
10.0			16.37	0.01				
18.0			16.36	0.02				

DEPTH	SR PD4	NH3	TFNO3	R SID2	CHLORA	MF COL	MF FCO	SPC 20
1.0	0.021	0.042	0.030	0.544	2.1	000E00	000E00	330E01
10.0						300E00		210E01
18.0						200E00	000E00	220E01

DEPTH	SPC 35
1.0	800E00
10.0	800E00
18.0	600E00

C-REF-NO 019
 CONS. NO 082
 COUNTRY 18
 INSTITUTE 22

LAT 44-00-36N
 LON 076-48-00W

YEAR 1968
 MONTH 10
 DAY 08
 TIME 2233

NO. DEPTHS 03
 SOUNDING 0296
 BT SLIDE NO 082

DEPTH	SECCHI	FOREL	TEMP	T CLAS	TURB	CON 25	02 W	T P04
1.0			16.33	0.00	0.1	333	9.39	0.057
10.0			16.23	0.01	0.1	327	9.44	0.052
27.0			12.13	0.07	0.1	338	6.86	0.080

DEPTH	SR P04	NH3	TFNO3	R SIO2	CHLORA	MF COL	MF FCO	SPC 20
1.0	0.021	0.028	0.034	0.468	2.7	100E00	100E00	380E01
10.0	0.027	0.017	0.124	0.956				
27.0	0.068	0.010	0.034	0.420		420E01	140E01	360E01

DEPTH	SPC 35	F RES	TT ALK	S SO4	CA NFA	MG NF	K NFS	NA NFS
1.0	230E01	193.0	89.9	29.8	38.000	8.000	1.320	12.900
10.0		196.0	90.1	30.2	40.000	8.100	1.300	12.900
27.0	770E01	201.0	94.1	29.8	38.000	8.100	1.300	12.900

DEPTH	PH 25	F	CL	HARD
1.0	8.200	0.120	27.9	127.8
10.0	8.200	0.118	27.9	133.2
27.0	7.700	0.115	27.8	128.2

CRUISE 68 - 022

C-REF-NO 022
 CONS. NO 001
 COUNTRY 18
 INSTITUTE 22

LAT 43-17-18N
 LON 079-42-00W

YEAR 1968
 MONTH 10
 DAY 27
 TIME 1620

NO. DEPTHS 05
 SOUNDING 0280
 BT SLIDE NO 001

DEPTH	SECCHI	FOREL	TEMP	T CLAS	TURB	CON 25	02 W	T P04
1.0	3.0	9	12.36	0.02	0.3	405	12.36	0.051
5.0			12.36	0.02	0.5	394	10.66	
10.0			12.33	0.01	0.4	409	10.39	
20.0			4.29	0.01	0.6	424	11.39	
26.0			4.28	0.01	0.5	411	11.42	

DEPTH	SR P04	NH3	TFNO3	R SIO2	CHLORA
1.0	0.011	0.060	0.325	0.280	6.2
5.0	0.058	0.011	0.275	0.920	
10.0	0.008	0.027	0.065	0.370	
20.0	0.006	0.043	0.060	0.330	
26.0	0.008	0.027	0.060	0.300	

C-REF-NO 022
 CONS. NO 002
 COUNTRY 18
 INSTITUTE 22

LAT 43-21-42N
 LON 079-42-00W

YEAR 1968
 MONTH 10
 DAY 27
 TIME 1704

NO. DEPTHS 05
 SOUNDING 0320
 BT SLIDE NO 002

DEPTH	SECCHI	FOREL	TEMP	T CLAS	TURB	CON 25	02 W	T P04
1.0	6.0	9	11.72	0.01	0.4	411	10.53	0.082
5.0			11.71	0.02	0.4	412	10.53	
10.0			10.88	0.00	0.4	417	11.85	
20.0			4.95	0.02	0.5	420	12.13	
30.0			4.70	0.01	0.9	416	10.97	

DEPTH	SR P04	NH3	TFNO3	R SIO2	CHLORA
1.0	0.008	0.040	0.090	0.390	3.8
5.0	0.011	0.026	0.090	0.450	
10.0	0.018	0.023	0.155	0.530	
20.0	0.046	0.024	0.315	1.070	
30.0	0.053	0.011	0.320	0.950	

C-REF-NO 022
 CONS. NO 003
 COUNTRY 18
 INSTITUTE 22

LAT 43-13-42N
 LON 079-24-00W

YEAR 1968
 MONTH 10
 DAY 27
 TIME 1859

NO. DEPTHS 04
 SOUNDING 0165
 BT SLIDE NO 003

DEPTH	SECCHI	FOREL	TEMP	T CLAS	TURB	CON 25	O2 W	T PO4
1.0	7.0	8	12.80	0.00	0.5	458	10.03	0.049
5.0			12.79	0.02	0.5	453	10.58	
10.0			12.75	0.02	0.5	443	10.44	
15.0			12.41	0.02	0.5	457	10.45	

DEPTH	SR PO4	NH3	TFNO3	R SIO2	CHLORA
1.0	0.010	0.050	0.070	0.340	2.6
5.0	0.025	0.042	0.060	0.500	
10.0	0.036	0.028	0.065	0.480	
15.0	0.008	0.029	0.050	0.500	

C-REF-NO 022
 CONS. NO 004
 COUNTRY 18
 INSTITUTE 22

LAT 43-17-12N
 LON 079-24-00W

YEAR 1968
 MONTH 10
 DAY 27
 TIME 2003

NO. DEPTHS 07
 SOUNDING 0744
 BT SLIDE NO 004

DEPTH	SECCHI	FOREL	TEMP	T CLAS	TURB	CON 25	O2 W	T PO4
1.0	6.0	8	11.14	0.01	0.5	457	11.00	0.070
5.0			11.14	0.02	0.5	452	11.02	
10.0			11.14	0.01	0.7	456	11.02	
20.0			11.06	0.01	0.8	450	11.02	
30.0			10.87	0.01	0.6	444	10.97	
50.0			4.29	0.00	0.7	490	11.44	
73.0			4.24	0.03	0.7	470	11.38	

DEPTH	SR PO4	NH3	TFNO3	R SIO2	CHLORA
1.0	0.004	0.038	0.140	0.410	2.6
5.0	0.007	0.046	0.095	0.370	
10.0	0.011	0.050	0.050	0.550	
20.0	0.031	0.040	0.090	0.270	
30.0	0.038	0.046	0.110	0.280	
50.0	0.058	0.035	0.325	0.890	
73.0	0.140	0.034	0.325	0.960	

C-REF-NO 022
CONS. NO 005
COUNTRY 18
INSTITUTE 22

LAT 43-21-24N
LON 079-24-00W

YEAR 1968
MONTH 10
DAY 27
TIME 2117

NO. DEPTHS 08
SOUNDING 0987
BT SLIDE NO 005

DEPTH	SECCHI	FOREL	TEMP	T CLAS	TURB	CON 25	02 W	T PD4
1.0			11.84	0.01	0.3	483	10.74	0.038
5.0			11.85	0.01	0.4	482	10.77	
10.0			11.80	0.01	0.4	485	10.80	
20.0			10.02	0.01	0.3	485	10.77	
30.0			4.55	0.03	0.2	494	11.99	
50.0			4.00	0.00	0.1	491	12.00	
75.0			3.87	0.02	0.3	495	12.00	
98.0			3.82	0.00	5.0	499	11.47	

DEPTH	SR PD4	NH3	TFNO3	R SIO2	CHLORA
1.0	0.010	0.036	0.075	0.300	
5.0	0.085	0.023	0.080	0.500	
10.0	0.010	0.025	0.080	0.400	
20.0	0.043	0.045	0.095	0.460	
30.0	0.072	0.012	0.250	0.380	
50.0	0.047	0.026	0.260	0.440	
75.0	0.054	0.026	0.315	0.880	
98.0	0.064	0.007	0.250	1.020	

C-REF-NO 022
CONS. NO 006
COUNTRY 18
INSTITUTE 22

LAT 43-24-00N
LON 079-29-00W

YEAR 1968
MONTH 10
DAY 27
TIME 2206

NO. DEPTHS 02
SOUNDING 0999
BT SLIDE NO 006

DEPTH	SECCHI	FOREL	TEMP	T CLAS	TURB	CON 25	02 W	T PD4
14.0			12.75	0.08				
17.0			12.74	0.01				

DEPTH	SR PD4	NH3	TFNO3	R SIO2	CHLORA
14.0					
17.0					

C-REF-NO 022
 CONS. NO 007
 COUNTRY 18
 INSTITUTE 22

LAT 43-26-00N
 LON 079-24-00W

YEAR 1968
 MONTH 10
 DAY 27
 TIME 2313

NO. DEPTHS 09
 SOUNDING 1112
 BT SLIDE NO 007

DEPTH	SECCHI	FOREL	TEMP	T CLAS	TURB	CON 25	O2 W	T P04
1.0			12.51	0.01	0.2	488	10.52	0.069
5.0			12.51	0.00	0.2	488	10.55	
10.0			12.51	0.01	0.1	488	10.53	
20.0			12.48	0.01	0.1	488	10.53	
30.0			5.58	0.01	0.2	499	11.80	
50.0			4.10	0.00	0.1	494	12.75	
75.0			3.86	0.01	0.1	494	13.00	
100.0			3.78	0.01	0.3	364	11.80	
107.0			3.81	0.03	0.2	364	11.66	

DEPTH	SR P04	NH3	TFNO3	R SIO2	CHLORA
1.0	0.007	0.053	0.065	0.260	2.2
5.0	0.007	0.018	0.060	0.230	
10.0	0.008	0.021	0.050	0.200	
20.0	0.006	0.055	0.060	0.230	
30.0	0.018	0.026	0.275	0.330	
50.0	0.068	0.017	0.300	0.400	
75.0	0.071	0.039	0.210	0.330	
100.0	0.064	0.006	0.240	0.950	
107.0	0.115	0.010	0.285	1.160	

C-REF-NO 022
 CONS. NO 008
 COUNTRY 18
 INSTITUTE 22

LAT 43-30-18N
 LON 079-24-00W

YEAR 1968
 MONTH 10
 DAY 28
 TIME 0024

NO. DEPTHS 08
 SOUNDING 0938
 BT SLIDE NO 008

DEPTH	SECCHI	FOREL	TEMP	T CLAS	TURB	CON 25	O2 W	T P04
1.0			10.07	0.02	0.2	506	11.02	0.036
5.0			10.04	0.02	0.3	488	11.02	
10.0			10.02	0.00	0.3	482	10.96	
20.0			9.84	0.01	0.3	488	10.94	
30.0			6.52	0.00	0.3	484	11.83	
50.0			4.58	0.01	0.2	488	11.96	
75.0			3.93	0.01	0.2	489	12.07	
92.0			3.84	0.02	1.5	490	11.47	

DEPTH	SR P04	NH3	TFNO3	R SIO2	CHLORA
1.0	0.018	0.020	0.110	0.330	2.0
5.0	0.017	0.050	0.130	0.350	
10.0	0.017	0.019	0.140	0.370	
20.0					
30.0	0.022	0.013	0.275	0.420	
50.0					
75.0	0.108	0.042	0.300	0.600	
92.0	0.075	0.012	0.285	1.100	

C-REF-NO 022
 CONS. NO 009
 COUNTRY 18
 INSTITUTE 22

LAT 43-34-24N
 LON 079-24-00W

YEAR 1968
 MONTH 10
 DAY 28
 TIME 0121

NO. DEPTHS 07
 SOUNDING 0671
 BT SLIDE NO 009

DEPTH	SECCHI	FOREL	TEMP	T CLAS	TURB	CON 25	02 W	T P04
1.0			9.03	0.00	0.5	492	11.24	0.045
5.0			9.03		0.5	497	11.22	
10.0			9.05	0.01	0.5	497	11.21	
20.0			6.95	0.01	0.3	500	11.75	
30.0			5.99	0.01	0.3	503	11.24	
50.0			4.31	0.01	0.7	506	11.41	
65.0			4.22	0.00	0.5	504	11.44	

DEPTH	SR P04	NH3	TFNO3	R SIO2	CHLORA
1.0	0.023	0.051	0.160	0.440	2.2
5.0	0.036	0.066	0.165	0.390	
10.0	0.017	0.051	0.170	0.390	
20.0	0.023	0.043	0.190	0.370	
30.0	0.054	0.030	0.265	0.620	
50.0	0.054	0.042	0.365	0.650	
65.0	0.056	0.033	0.185	0.500	

C-REF-NO 022
 CONS. NO 010
 COUNTRY 18
 INSTITUTE 22

LAT 43-47-24N
 LON 079-05-42W

YEAR 1968
 MONTH 10
 DAY 28
 TIME 0317

NO. DEPTHS 01
 SOUNDING 0155
 BT SLIDE NO 010

DEPTH	SECCHI	FOREL	TEMP	T CLAS	TURB	CON 25	02 W	T P04
0.0			6.10					

DEPTH	SR P04	NH3	TFNO3	R SIO2	CHLORA
0.0					

C-REF-NO 022
 CONS. NO 011
 COUNTRY 18
 INSTITUTE 22

LAT 43-39-00N
 LON 079-06-00W

YEAR 1968
 MONTH 10
 DAY 28
 TIME 0410

NO. DEPTHS 01
 SOUNDING 1070
 BT SLIDE NO 011

DEPTH	SECCHI	FOREL	TEMP	T CLAS	TURB	CON 25	02 W	T P04
0.0			5.50					

DEPTH	SR P04	NH3	TFNO3	R SIO2	CHLORA
0.0					1.7

C-REF-NO 022
 CONS. NO 012
 COUNTRY 18
 INSTITUTE 22

LAT 43-26-00N
 LON 079-06-00W

YEAR 1968
 MONTH 10
 DAY 28
 TIME 0530

NO. DEPTHS 01
 SOUNDING 1213
 BT SLIDE NO 012

DEPTH	SECCHI	FOREL	TEMP	T CLAS	TURB	CON 25	02 W	T P04
0.0			11.20					

DEPTH	SR P04	NH3	TFNO3	R SIO2	CHLORA
0.0					2.2

C-REF-NO 022
 CONS. NO 013
 COUNTRY 18
 INSTITUTE 22

LAT 43-18-54N
 LON 079-06-00W

YEAR 1968
 MONTH 10
 DAY 28
 TIME 0624

NO. DEPTHS 01
 SOUNDING 0110
 BT SLIDE NO 013

DEPTH	SECCHI	FOREL	TEMP	T CLAS	TURB	CON 25	02 W	T P04
8.0			11.26	0.01				

DEPTH	SR P04	NH3	TFNO3	R SIO2	CHLORA
8.0					

C-REF-NO 022
 CONS. NO 014
 COUNTRY 18
 INSTITUTE 22

LAT 43-18-00N
 LON 079-07-30W

YEAR 1968
 MONTH 10
 DAY 28
 TIME 0640

NO. DEPTHS 01
 SOUNDING 0137
 BT SLIDE NO 014

DEPTH	SECCHI	FOREL	TEMP	T CLAS	TURB	CON 25	02 W	T P04
8.0			11.52	0.01				

DEPTH	SR P04	NH3	TFN03	R SIO2	CHLORA
8.0					

C-REF-NO 022
 CONS. NO 015
 COUNTRY 18
 INSTITUTE 22

LAT 43-17-42N
 LON 079-06-30W

YEAR 1968
 MONTH 10
 DAY 28
 TIME 0701

NO. DEPTHS 01
 SOUNDING 0152
 BT SLIDE NO 015

DEPTH	SECCHI	FOREL	TEMP	T CLAS	TURB	CON 25	02 W	T P04
0.0			11.60					

DEPTH	SR P04	NH3	TFN03	R SIO2	CHLORA
0.0					2.6

C-REF-NO 022
 CONS. NO 016
 COUNTRY 18
 INSTITUTE 22

LAT 43-18-12N
 LON 079-02-24W

YEAR 1968
 MONTH 10
 DAY 28
 TIME 1117

NO. DEPTHS 01
 SOUNDING 0107
 BT SLIDE NO 016

DEPTH	SECCHI	FOREL	TEMP	T CLAS	TURB	CON 25	02 W	T P04
0.0			13.60					

DEPTH	SR P04	NH3	TFN03	R SIO2	CHLORA
0.0					

C-REF-NO 022
 CONS. NO 017
 COUNTRY 18
 INSTITUTE 22

LAT 43-18-00N
 LON 078-59-48W

YEAR 1968
 MONTH 10
 DAY 28
 TIME 1144

NO. DEPTHS 01
 SOUNDING 0128
 BT SLIDE NO 017

DEPTH SECCHI FOREL TEMP T CLAS TURB CON 25 02 W T P04
 8.0 13.48 0.00

DEPTH SR P04 NH3 TFNO3 R SIO2 CHLORA
 8.0

C-REF-NO 022
 CONS. NO 018
 COUNTRY 18
 INSTITUTE 22

LAT 43-19-00N
 LON 079-02-00W

YEAR 1968
 MONTH 10
 DAY 28
 TIME 1208

NO. DEPTHS 01
 SOUNDING 0134
 BT SLIDE NO 018

DEPTH SECCHI FOREL TEMP T CLAS TURB CON 25 02 W T P04
 8.0 12.60 0.00

DEPTH SR P04 NH3 TFNO3 R SIO2 CHLORA
 8.0

C-REF-NO 022
 CONS. NO 019
 COUNTRY 18
 INSTITUTE 22

LAT 43-19-00N
 LON 079-00-48W

YEAR 1968
 MONTH 10
 DAY 28
 TIME 1227

NO. DEPTHS 01
 SOUNDING 0168
 BT SLIDE NO 019

DEPTH SECCHI FOREL TEMP T CLAS TURB CON 25 02 W T P04
 8.0 12.50 0.01

DEPTH SR P04 NH3 TFNO3 R SIO2 CHLORA
 8.0

C-REF-NO 022
 CONS. NO 020
 COUNTRY 18
 INSTITUTE 22

LAT 43-19-42N
 LON 079-02-00W

YEAR 1968
 MONTH 10
 DAY 28
 TIME 1249

NO. DEPTHS 03
 SOUNDING 0573
 BT SLIDE NO 020

DEPTH	SECCHI	FOREL	TEMP	T CLAS	TURB	CON 25	02 W	T P04
7.0			11.79	0.00				
23.0			11.61	0.02				
39.0			11.41	0.01				

DEPTH	SR P04	NH3	TFNO3	R SIO2	CHLORA
7.0					
23.0					
39.0					

C-REF-NO 022
 CONS. NO 021
 COUNTRY 18
 INSTITUTE 22

LAT 43-20-06N
 LON 078-59-48W

YEAR 1968
 MONTH 10
 DAY 28
 TIME 1317

NO. DEPTHS 03
 SOUNDING 0646
 BT SLIDE NO 021

DEPTH	SECCHI	FOREL	TEMP	T CLAS	TURB	CON 25	02 W	T P04
11.0	3.0	7	11.96	0.02				
25.0			11.60					
45.0			11.31	0.00				

DEPTH	SR P04	NH3	TFNO3	R SIO2	CHLORA
11.0					
25.0					
45.0					

C-REF-NO 022
 CONS. NO 022
 COUNTRY 18
 INSTITUTE 22

LAT 43-19-18N
 LON 078-59-12W

YEAR 1968
 MONTH 10
 DAY 28
 TIME 1344

NO. DEPTHS 01
 SOUNDING 0305
 BT SLIDE NO 022

DEPTH	SECCHI	FOREL	TEMP	T CLAS	TURB	CON 25	02 W	T P04
8.0	3.0	7	12.11	0.00				

DEPTH	SR P04	NH3	TFNO3	R SIO2	CHLORA
8.0					

C-REF-NO 022
 CONS. NO 023
 COUNTRY 18
 INSTITUTE 22

LAT 43-18-42N
 LON 078-57-54W

YEAR 1968
 MONTH 10
 DAY 28
 TIME 1406

NO. DEPTHS 01
 SOUNDING 0155
 BT SLIDE NO 023

DEPTH	SECCHI	FOREL	TEMP	T CLAS	TURB	CON 25	02 W	T P04
8.0	3.0	8	12.62	0.01				

DEPTH	SR P04	NH3	TFNO3	R SIO2	CHLORA
8.0					

C-REF-NO 022
 CONS. NO 024
 COUNTRY 18
 INSTITUTE 22

LAT 43-21-42N
 LON 078-48-00W

YEAR 1968
 MONTH 10
 DAY 28
 TIME 1513

NO. DEPTHS 07
 SOUNDING 0561
 BT SLIDE NO 024

DEPTH	SECCHI	FOREL	TEMP	T CLAS	TURB	CON 25	02 W	T P04
1.0	3.0	8	11.81	0.01	0.5	499	10.55	0.045
5.0			11.81	0.01	1.7	480	10.61	
10.0			11.78	0.01	0.5	488	10.56	
20.0			11.67	0.01	0.3	481	10.58	
30.0			11.50	0.01	0.3	482	10.60	
49.0			8.04	0.04	0.4	492	10.66	
53.0			6.77	0.00	0.4	494	10.69	

DEPTH	SR P04	NH3	TFNO3	R SIO2	CHLORA
1.0	0.008	0.060	0.068	0.190	1.9
5.0	0.008	0.051	0.078	0.220	
10.0	0.006	0.045	0.068	0.180	
20.0	0.031	0.055	0.074	0.220	
30.0	0.023	0.048	0.082	0.200	
49.0	0.010	0.057	0.074	0.180	
53.0	0.042	0.043	0.100	0.270	

C-REF-NO 022
 CONS. NO 025
 COUNTRY 18
 INSTITUTE 22

LAT 43-26-00N
 LON 078-48-00W

YEAR 1968
 MONTH 10
 DAY 28
 TIME 1620

NO. DEPTHS 09
 SOUNDING 1298
 BT SLIDE NO 025

DEPTH	SECCHI	FOREL	TEMP	T CLAS	TURB	CON 25	O2 W	T PO4
1.0	3.0	9	11.35	0.01	0.1	463	12.14	0.031
5.0			11.36	0.01	0.4	461	10.72	
10.0			11.36	0.00	0.2	457	10.81	
20.0			11.36	0.02	0.2	460	10.83	
30.0			11.26	0.00	0.2	458	10.91	
50.0			4.35	0.01	0.1	469	12.75	
75.0			4.30	0.00	0.3	462	13.07	
100.0			3.84	0.01	0.1	468	13.02	
128.0			3.79	0.04	0.3	467	10.96	

DEPTH	SR PO4	NH3	TFNO3	R SID2	CHLORA
1.0	0.004	0.036	0.080	0.210	2.5
5.0	0.006	0.042	0.084	0.200	
10.0	0.006	0.052	0.100	0.210	
20.0	0.015	0.047	0.094	0.200	
30.0	0.058	0.054	0.092	0.210	
50.0	0.055	0.042	0.246	0.350	
75.0	0.056	0.040	0.260	0.360	
100.0	0.073	0.053	0.230	0.475	
128.0	0.071	0.054	0.260	1.050	

C-REF-NO 022
 CONS. NO 026
 COUNTRY 18
 INSTITUTE 22

LAT 43-30-18N
 LON 078-48-00W

YEAR 1968
 MONTH 10
 DAY 28
 TIME 1755

NO. DEPTHS 09
 SOUNDING 1451
 BT SLIDE NO 026

DEPTH	SECCHI	FOREL	TEMP	T CLAS	TURB	CON 25	O2 W	T PO4
1.0	11.0	8	10.34	0.00				
5.0			10.32	0.00				
10.0			10.32	0.01				
20.0			9.28	0.01				
30.0			5.62	0.03				
50.0			4.12	0.02				
75.0			3.91	0.00				
100.0			3.88	0.00				
144.0			3.79	0.01				

DEPTH	SR PO4	NH3	TFNO3	R SID2	CHLORA
1.0					2.0
5.0					
10.0					
20.0					
30.0					
50.0					
75.0					
100.0					
144.0					

C-REF-NO 022
 CONS. NO 027
 COUNTRY 18
 INSTITUTE 22

LAT 43-34-36N
 LON 078-48-00W

YEAR 1968
 MONTH 10
 DAY 28
 TIME 1906

NO. DEPTHS 09
 SOUNDING 1463
 BT SLIDE NO 027

DEPTH	SECCHI	FOREL	TEMP	T CLAS	TURB	CON 25	02 W	T P04
1.0	11.0	8	11.59	0.00	0.4	481	10.72	0.033
5.0			11.59	0.01	0.5	475	11.28	
10.0			11.61	0.00	0.4	469	13.83	
20.0			11.56	0.01	0.4	471	11.18	
30.0			7.28	0.01	0.4	480	11.69	
49.0			4.78	0.01	0.4	478	12.60	
74.0			3.98	0.02	0.5	479	13.10	
99.0			3.92	0.01	0.3	474	13.07	
143.0			3.79		0.2	482	12.14	

DEPTH	SR P04	NH3	TFNO3	R SIO2	CHLORA
1.0	0.002	0.053	0.120	0.300	2.3
5.0	0.003	0.028	0.084	0.170	
10.0	0.004	0.026	0.084	0.050	
20.0	0.027	0.045	0.086	0.050	
30.0	0.023	0.042	0.208	0.120	
49.0	0.042	0.029	0.234	0.290	
74.0	0.072	0.014	0.238	0.310	
99.0	0.054	0.018	0.254	0.320	
143.0	0.069	0.023	0.260	0.900	

C-REF-NO 022
 CONS. NO 028
 COUNTRY 18
 INSTITUTE 22

LAT 43-39-00N
 LON 078-48-00W

YEAR 1968
 MONTH 10
 DAY 28
 TIME 2005

NO. DEPTHS 01
 SOUNDING 1204
 BT SLIDE NO 028

DEPTH	SECCHI	FOREL	TEMP	T CLAS	TURB	CON 25	02 W	T P04
0.0	8.0	8	11.40					

DEPTH	SR P04	NH3	TFNO3	R SIO2	CHLORA
0.0					2.3

C-REF-NO 022
 CONS. NO 029
 COUNTRY 18
 INSTITUTE 22

LAT 43-43-18N
 LON 078-48-00W

YEAR 1968
 MONTH 10
 DAY 28
 TIME 2118

NO. DEPTHS 08
 SOUNDING 0940
 BT SLIDE NO 029

DEPTH	SECCHI	FOREL	TEMP	T CLAS	TURB	CON 25	02 W	T P04
1.0	3.0	7	10.03	0.01	0.1	483	11.28	0.034
5.0			10.02	0.02	0.1	487	11.27	
10.0			10.00	0.01	0.1	489	11.27	
20.0			7.20	0.00	0.1	487	11.74	
30.0			5.53	0.02	0.1	495	12.16	
49.0			4.00	0.00	0.1	491	12.71	
74.0			3.92	0.01	0.1	492	12.69	
91.0			3.94	0.02	2.0	493	12.68	

DEPTH	SR P04	NH3	TFNO3	R SIO2	CHLORA
1.0	0.007	0.035	0.140	0.250	2.4
5.0	0.009	0.028	0.145	0.290	
10.0	0.024	0.016	0.135	0.300	
20.0	0.014	0.016	0.140	0.310	
30.0	0.014	0.041	0.270	0.290	
49.0	0.053	0.019	0.300	0.480	
74.0	0.055	0.015	0.370	0.690	
91.0	0.056	0.011	0.200	0.540	

C-REF-NO 022
 CONS. NO 030
 COUNTRY 18
 INSTITUTE 22

LAT 43-47-36N
 LON 078-48-00W

YEAR 1968
 MONTH 10
 DAY 28
 TIME 2218

NO. DEPTHS 07
 SOUNDING 0573
 BT SLIDE NO 030

DEPTH	SECCHI	FOREL	TEMP	T CLAS	TURB	CON 25	02 W	T P04
1.0			7.99	0.00	0.1	494	11.57	0.072
5.0			7.96	0.03	0.1	490	11.55	
10.0			7.88	0.01	0.1	491	11.57	
20.0			4.29	0.02	0.1	498	11.96	
30.0			3.99	0.00	0.1	498	12.14	
50.0			3.98	0.02	0.1	495	12.11	
55.0			3.97	0.01	0.6	494	12.08	

DEPTH	SR P04	NH3	TFNO3	R SIO2	CHLORA
1.0	0.054	0.015	0.160	0.500	2.1
5.0	0.032	0.030	0.160	0.580	
10.0	0.042	0.015	0.155	0.470	
20.0	0.052	0.011	0.200	0.510	
30.0	0.115	0.013	0.260	0.620	
50.0	0.064	0.032	0.240	0.640	
55.0	0.065	0.020	0.135	0.785	

C-REF-NO 022
 CONS. NO 031
 COUNTRY 18
 INSTITUTE 22

LAT 43-51-00N
 LON 078-48-00W

YEAR 1968
 MONTH 10
 DAY 28
 TIME 2319

NO. DEPTHS 03
 SOUNDING 0122
 BT SLIDE NO 031

DEPTH	SECCHI	FOREL	TEMP	T CLAS	TURB	CON 25	02 W	T P04
1.0			5.91	0.00	0.2	494	11.83	0.058
5.0			5.89	0.02	0.1	495	11.85	
10.0			5.71	0.02	0.1	495	11.85	

DEPTH	SR P04	NH3	TFNO3	R SIO2	CHLORA
1.0	0.054	0.041	0.190	0.610	1.3
5.0	0.058	0.037	0.200	0.585	
10.0	0.063	0.042	0.120	0.425	

C-REF-NO 022
 CONS. NO 032
 COUNTRY 18
 INSTITUTE 22

LAT 43-52-00N
 LON 078-30-00W

YEAR 1968
 MONTH 10
 DAY 29
 TIME 0032

NO. DEPTHS 01
 SOUNDING 0390
 BT SLIDE NO 032

DEPTH	SECCHI	FOREL	TEMP	T CLAS	TURB	CON 25	02 W	T P04
0.0			8.40					

DEPTH	SR P04	NH3	TFNO3	R SIO2	CHLORA
0.0					1.0

C-REF-NO 022
 CONS. NO 033
 COUNTRY 18
 INSTITUTE 22

LAT 43-39-00N
 LON 078-30-00W

YEAR 1968
 MONTH 10
 DAY 29
 TIME 0203

NO. DEPTHS 01
 SOUNDING 1381
 BT SLIDE NO 033

DEPTH	SECCHI	FOREL	TEMP	T CLAS	TURB	CON 25	02 W	T P04
0.0			11.50					

DEPTH	SR P04	NH3	TFNO3	R SIO2	CHLORA
0.0					1.9

C-REF-NO 022
 CONS. NO 034
 COUNTRY 18
 INSTITUTE 22

LAT 43-26-00N
 LON 078-30-00W

YEAR 1968
 MONTH 10
 DAY 29
 TIME 0329

NO. DEPTHS 01
 SOUNDING 1210
 BT SLIDE NO 034

DEPTH SECCHI FOREL TEMP T CLAS TURB CON 25 02 W T P04
 0.0 10.60

DEPTH SR P04 NH3 TFNO3 R SIO2 CHLORA
 0.0 1.5

C-REF-NO 022
 CONS. NO 035
 COUNTRY 18
 INSTITUTE 22

LAT 43-26-00N
 LON 078-12-00W

YEAR 1968
 MONTH 10
 DAY 29
 TIME 0459

NO. DEPTHS 01
 SOUNDING 0762
 BT SLIDE NO 035

DEPTH SECCHI FOREL TEMP T CLAS TURB CON 25 02 W T P04
 0.0 12.00

DEPTH SR P04 NH3 TFNO3 R SIO2 CHLORA
 0.0 1.4

C-REF-NO 022
 CONS. NO 036
 COUNTRY 18
 INSTITUTE 22

LAT 43-39-00N
 LON 078-12-00W

YEAR 1968
 MONTH 10
 DAY 29
 TIME 0618

NO. DEPTHS 01
 SOUNDING 1621
 BT SLIDE NO 036

DEPTH SECCHI FOREL TEMP T CLAS TURB CON 25 02 W T P04
 0.0 11.20

DEPTH SR P04 NH3 TFNO3 R SIO2 CHLORA
 0.0 1.3

C-REF-NO 022
 CONS. NO 037
 COUNTRY 18
 INSTITUTE 22

LAT 43-52-00N
 LON 078-12-00W

YEAR 1968
 MONTH 10
 DAY 29
 TIME 0744

NO. DEPTHS 01
 SOUNDING 0533
 BT SLIDE NO 037

DEPTH	SECCHI	FOREL	TEMP	T CLAS	TURB	CON 25	02 W	T P04
0.0			9.40					

DEPTH	SR P04	NH3	TFN03	R SID2	CHLORA
0.0					1.1

C-REF-NO 022
 CONS. NO 038
 COUNTRY 18
 INSTITUTE 22

LAT 43-56-18N
 LON 077-54-00W

YEAR 1968
 MONTH 10
 DAY 29
 TIME 0953

NO. DEPTHS 06
 SOUNDING 0387
 BT SLIDE NO 038

DEPTH	SECCHI	FOREL	TEMP	T CLAS	TURB	CON 25	02 W	T P04
1.0			7.32	0.00	0.1		11.14	0.090
5.0			7.32	0.03	0.2	485	11.22	
10.0			7.22	0.01	0.3	482	11.21	
20.0			6.83	0.01	0.1	487	11.33	
30.0			5.26	0.00	0.2	489	11.42	
36.0			5.18	0.02	0.2	483	11.46	

DEPTH	SR P04	NH3	TFN03	R SID2	CHLORA
1.0	0.032	0.030	0.206	0.600	0.9
5.0	0.053	0.018	0.220	0.650	
10.0	0.042	0.008	0.218	0.620	
20.0	0.042	0.048	0.242	0.650	
30.0	0.066	0.010	0.260	0.730	
36.0	0.053	0.009	0.260	0.730	

C-REF-NO 022
CONS. NO 039
COUNTRY 18
INSTITUTE 22

LAT 43-52-00N
LON 077-54-00W

YEAR 1968
MONTH 10
DAY 29
TIME 1054

NO. DEPTHS 07
SOUNDING 0582
BT SLIDE NO 039

DEPTH	SECCHI	FOREL	TEMP	T CLAS	TURB	CON 25	02 W	T P04
1.0			9.82	0.01	0.2	478	11.05	0.036
5.0			9.79	0.03	0.2	483	11.05	
10.0			9.82	0.00	0.1	485	11.05	
20.0			9.77	0.02	0.2	484	11.05	
30.0			9.25	0.00	0.1	486	11.00	
50.0			4.53	0.01	0.2	497	11.47	
56.0			4.51	0.01	0.2	490	11.47	

DEPTH	SR P04	NH3	TFNO3	R SIO2	CHLORA
1.0	0.010	0.009	0.122	0.300	1.1
5.0	0.011	0.047	0.114	0.270	
10.0	0.011	0.010	0.116	0.260	
20.0	0.023	0.009	0.128	0.285	
30.0	0.021	0.008	0.178	0.320	
50.0	0.070	0.006	0.260	0.715	
56.0	0.080	0.019	0.294	0.840	

C-REF-NO 022
CONS. NO 040
COUNTRY 18
INSTITUTE 22

LAT 43-47-00N
LON 077-54-00W

YEAR 1968
MONTH 10
DAY 29
TIME 1136

NO. DEPTHS 01
SOUNDING 0990
BT SLIDE NO 040

DEPTH	SECCHI	FOREL	TEMP	T CLAS	TURB	CON 25	02 W	T P04
0.0			12.20					

DEPTH	SR P04	NH3	TFNO3	R SIO2	CHLORA
0.0					1.8

C-REF-NO 022
 CONS. NO 041
 COUNTRY 18
 INSTITUTE 22

LAT 43-43-18N
 LON 077-54-00W

YEAR 1968
 MONTH 10
 DAY 29
 TIME 1239

NO. DEPTHS 09
 SOUNDING 1225
 BT SLIDE NO 041

DEPTH	SECCHI	FOREL	TEMP	T CLAS	TURB	CON 25	02 W	T P04
1.0	4.0	7	13.24	0.02	0.1	474	10.13	0.040
5.0			13.17	0.03	0.1	482	10.13	
10.0			13.26	0.01	0.1	470	10.14	
20.0			13.25	0.01	0.1	467	10.14	
30.0			9.95	0.01	0.1	475	10.05	
50.0			4.49	0.02	0.2	476	12.57	
75.0			4.00	0.00	0.1	478	12.52	
100.0			3.89	0.01	0.3	479	12.14	
118.0			3.87	0.02	0.7	476	12.11	

DEPTH	SR P04	NH3	TFNO3	R SIO2	CHLORA
1.0	0.010	0.050	0.060	0.200	1.4
5.0	0.012	0.055	0.075	0.170	
10.0	0.011	0.060	0.060	0.170	
20.0	0.011	0.042	0.045	0.140	
30.0	0.024	0.035	0.190	0.305	
50.0	0.059	0.036	0.210	0.330	
75.0	0.064	0.038	0.280	0.550	
100.0	0.073	0.035	0.240	0.600	
118.0	0.088	0.044	0.245	0.650	

C-REF-NO 022
 CONS. NO 042
 COUNTRY 18
 INSTITUTE 22

LAT 43-39-00N
 LON 077-54-00W

YEAR 1968
 MONTH 10
 DAY 29
 TIME 1329

NO. DEPTHS 01
 SOUNDING 1621
 BT SLIDE NO 042

DEPTH	SECCHI	FOREL	TEMP	T CLAS	TURB	CON 25	02 W	T P04
0.0			12.60					

DEPTH	SR P04	NH3	TFNO3	R SIO2	CHLORA
0.0					1.2

C-REF-NO 022
 CONS. NO 043
 COUNTRY 18
 INSTITUTE 22

LAT 43-34-42N
 LON 077-54-00W

YEAR 1968
 MONTH 10
 DAY 29
 TIME 1436

NO. DEPTHS 10
 SOUNDING 1841
 BT SLIDE NO 043

DEPTH	SECCHI	FOREL	TEMP	T CLAS	TURB	CON 25	02 W	T P04
1.0	4.0	7	12.74	0.01	0.2	480	10.20	0.034
5.0			12.73	0.02	0.2	474	10.22	
10.0			12.73	0.01	0.2	475	10.25	
20.0			12.70	0.02	0.1	472	10.30	
30.0			4.33	0.01	0.1	481	12.25	
50.0			4.90	0.01	0.2	482	12.36	
75.0			4.11	0.00	0.1	480	12.74	
100.0			3.95	0.03	0.2	481	12.93	
149.0					0.2	487	11.82	
181.0			3.81	0.01	220.0	482	11.61	

DEPTH	SR P04	NH3	TFNO3	R SIO2	CHLORA
1.0	0.010	0.043	0.065	0.150	2.1
5.0	0.017	0.049	0.090	0.110	
10.0	0.011	0.046	0.095	0.110	
20.0	0.008	0.043	0.065	0.100	
30.0	0.023	0.048	0.145	0.160	
50.0	0.047	0.040	0.230	0.250	
75.0	0.047	0.041	0.245	0.280	
100.0	0.054	0.040	0.190	0.290	
149.0	0.071	0.045	0.205	0.620	
181.0	0.073	0.040	0.235	0.790	

C-REF-NO 022
 CONS. NO 044
 COUNTRY 18
 INSTITUTE 22

LAT 43-30-18N
 LON 077-54-00W

YEAR 1968
 MONTH 10
 DAY 29
 TIME 1515

NO. DEPTHS 01
 SOUNDING 1682
 BT SLIDE NO 044

DEPTH	SECCHI	FOREL	TEMP	T CLAS	TURB	CON 25	02 W	T P04
0.0			12.10					

DEPTH	SR P04	NH3	TFNO3	R SIO2	CHLORA
0.0					

C-REF-NO 022
 CONS. NO 045
 COUNTRY 18
 INSTITUTE 22

LAT 43-26-00N
 LON 077-54-00W

YEAR 1968
 MONTH 10
 DAY 29
 TIME 1617

NO. DEPTHS 09
 SOUNDING 1243
 BT SLIDE NO 045

DEPTH	SECCHI	FOREL	TEMP	T CLAS	TURB	CON 25	02 W	T P04
1.0	3.0	8	11.84	0.01	0.1	484	12.60	0.032
5.0			11.76	0.03	0.2	484	12.68	
10.0			11.82	0.00	0.3	482	10.60	
20.0			11.83	0.03	0.3	482	10.20	
30.0			11.84	0.00	0.2	482	11.03	
50.0			11.80	0.03	0.3	485	10.74	
75.0			6.16	0.01	0.3	492	11.74	
100.0			4.38	0.00	0.3	497	11.71	
120.0								

DEPTH	SR P04	NH3	TFNO3	R SIO2	CHLORA
1.0	0.008	0.046	0.080	0.140	2.4
5.0	0.022	0.046	0.065	0.100	
10.0	0.013	0.050	0.070	0.080	
20.0	0.008	0.048	0.075	0.080	
30.0	0.015	0.045	0.060	0.070	
50.0	0.010	0.044	0.075	0.090	
75.0	0.038	0.042	0.235	0.400	
100.0	0.049	0.038	0.240	0.410	
120.0	0.055	0.032	0.255	0.510	

C-REF-NO 022
 CONS. NO 046
 COUNTRY 18
 INSTITUTE 22

LAT 43-22-00N
 LON 077-54-00W

YEAR 1968
 MONTH 10
 DAY 29
 TIME 1715

NO. DEPTHS 04
 SOUNDING 0168
 BT SLIDE NO 046

DEPTH	SECCHI	FOREL	TEMP	T CLAS	TURB	CON 25	02 W	T P04
1.0	5.5	7	12.05	0.01	0.3	483	10.50	0.053
5.0			12.05	0.01	0.3	482	10.45	
10.0			12.05	0.00	0.3	483	10.69	
16.0			12.04	0.02	0.4	485	11.35	

DEPTH	SR P04	NH3	TFNO3	R SIO2	CHLORA
1.0	0.018	0.065	0.075	0.160	2.4
5.0	0.019	0.047	0.065	0.140	
10.0	0.010	0.045	0.060	0.130	
16.0	0.014	0.085	0.045	0.110	

C-REF-NO 022
 CONS. NO 047
 COUNTRY 18
 INSTITUTE 22

LAT 43-17-18N
 LON 077-36-00W

YEAR 1968
 MONTH 10
 DAY 29
 TIME 1839

NO. DEPTHS 01
 SOUNDING 0177
 BT SLIDE NO 047

DEPTH	SECCHI	FOREL	TEMP	T CLAS	TURB	CON 25	02 W	T P04
0.0	8.0	8	12.20					

DEPTH	SR P04	NH3	TFN03	R SIO2	CHLORA
0.0					

C-REF-NO 022
 CONS. NO 048
 COUNTRY 18
 INSTITUTE 22

LAT 43-26-00N
 LON 077-36-00W

YEAR 1968
 MONTH 10
 DAY 29
 TIME 1941

NO. DEPTHS 01
 SOUNDING 1600
 BT SLIDE NO 048

DEPTH	SECCHI	FOREL	TEMP	T CLAS	TURB	CON 25	02 W	T P04
0.0	12.0	7	13.60					

DEPTH	SR P04	NH3	TFN03	R SIO2	CHLORA
0.0					1.8

C-REF-NO 022
 CONS. NO 049
 COUNTRY 18
 INSTITUTE 22

LAT 43-39-00N
 LON 077-36-00W

YEAR 1968
 MONTH 10
 DAY 29
 TIME 2111

NO. DEPTHS 01
 SOUNDING 1170
 BT SLIDE NO 049

DEPTH	SECCHI	FOREL	TEMP	T CLAS	TURB	CON 25	02 W	T P04
0.0			13.20					

DEPTH	SR P04	NH3	TFN03	R SIO2	CHLORA
0.0					1.5

C-REF-NO 022
 CONS. NO 050
 COUNTRY 18
 INSTITUTE 22

LAT 43-52-00N
 LON 077-36-00W

YEAR 1968
 MONTH 10
 DAY 29
 TIME 2228

NO. DEPTHS 01
 SOUNDING 0475
 BT SLIDE NO 050

DEPTH SECCHI FOREL TEMP T CLAS TURB CON 25 02 W T P04
 0.0 11.20

DEPTH SR P04 NH3 TFNO3 R SIO2 CHLORA
 0.0 1.9

C-REF-NO 022
 CONS. NO 051
 COUNTRY 18
 INSTITUTE 22

LAT 43-52-00N
 LON 077-18-00W

YEAR 1968
 MONTH 10
 DAY 30
 TIME 0023

NO. DEPTHS 01
 SOUNDING 0287
 BT SLIDE NO 051

DEPTH SECCHI FOREL TEMP T CLAS TURB CON 25 02 W T P04
 0.0 11.80

DEPTH SR P04 NH3 TFNO3 R SIO2 CHLORA
 0.0 2.1

C-REF-NO 022
 CONS. NO 052
 COUNTRY 18
 INSTITUTE 22

LAT 43-39-00N
 LON 077-18-00W

YEAR 1968
 MONTH 10
 DAY 30
 TIME 0140

NO. DEPTHS 01
 SOUNDING 1298
 BT SLIDE NO 052

DEPTH SECCHI FOREL TEMP T CLAS TURB CON 25 02 W T P04
 0.0 14.00

DEPTH SR P04 NH3 TFNO3 R SIO2 CHLORA
 0.0 1.7

C-REF-NO 022
 CONS. NO 053
 COUNTRY 18
 INSTITUTE 22

LAT 43-26-00N
 LON 077-18-00W

YEAR 1968
 MONTH 10
 DAY 30
 TIME 0300

NO. DEPTHS 01
 SOUNDING 2127
 BT SLIDE NO 053

DEPTH	SECCHI	FOREL	TEMP	T CLAS	TURB	CON 25	02 W	T P04
0.0			13.40					

DEPTH	SR P04	NH3	TFNO3	R SIO2	CHLORA
0.0					1.5

C-REF-NO 022
 CONS. NO 054
 COUNTRY 18
 INSTITUTE 22

LAT 43-18-42N
 LON 077-18-00W

YEAR 1968
 MONTH 10
 DAY 30
 TIME 0858

NO. DEPTHS 01
 SOUNDING 0427
 BT SLIDE NO 054

DEPTH	SECCHI	FOREL	TEMP	T CLAS	TURB	CON 25	02 W	T P04
0.0			12.40					

DEPTH	SR P04	NH3	TFNO3	R SIO2	CHLORA
0.0					

C-REF-NO 022
 CONS. NO 055
 COUNTRY 18
 INSTITUTE 22

LAT 43-17-12N
 LON 077-00-00W

YEAR 1968
 MONTH 10
 DAY 30
 TIME 1036

NO. DEPTHS 04
 SOUNDING 0201
 BT SLIDE NO 055

DEPTH	SECCHI	FOREL	TEMP	T CLAS	TURB	CON 25	02 W	T P04
1.0			12.30	0.00	0.2	334	10.17	0.063
5.0			12.30	0.00	0.2	339	10.20	
10.0			12.30	0.01	0.1	337	10.24	
17.0			12.30	0.01	0.1	336	10.20	

DEPTH	SR P04	NH3	TFNO3	R SIO2	CHLORA
1.0	0.015	0.089	0.065	0.230	1.4
5.0	0.023	0.050	0.048	0.225	
10.0	0.016	0.054	0.050	0.210	
17.0	0.020	0.082	0.045	0.180	

C-REF-NO 022
 CONS. NO 056
 COUNTRY 18
 INSTITUTE 22

LAT 43-21-42N
 LON 077-00-00W

YEAR 1968
 MONTH 10
 DAY 30
 TIME 1110

NO. DEPTHS 01
 SOUNDING 0747
 BT SLIDE NO 056

DEPTH	SECCHI	FOREL	TEMP	T CLAS	TURB	CON 25	02 W	T P04
0.0			12.70					

DEPTH	SR P04	NH3	TFNO3	R SIO2	CHLORA
0.0					1.5

C-REF-NO 022
 CONS. NO 057
 COUNTRY 18
 INSTITUTE 22

LAT 43-26-00N
 LON 077-00-00W

YEAR 1968
 MONTH 10
 DAY 30
 TIME 1230

NO. DEPTHS 11
 SOUNDING 1890
 BT SLIDE NO 057

DEPTH	SECCHI	FOREL	TEMP	T CLAS	TURB	CON 25	02 W	T P04
1.0	3.5	7	13.26	0.02	0.1	332	10.19	0.054
5.0			13.25	0.01	0.1	329	10.19	
10.0			13.28	0.00	0.1	330	10.17	
20.0			13.26	0.01	0.1	328	10.17	
30.0			13.26	0.01	0.1	327	10.20	
50.0			7.53	0.00	0.2	335	11.14	
75.0			4.32	0.01	0.1	335	12.33	
100.0			4.00	0.00	0.1	334	12.77	
150.0			3.86	0.02	0.3	334	12.90	
165.0			3.80		0.2	333	12.72	
185.0								

DEPTH	SR P04	NH3	TFNO3	R SIO2	CHLORA
1.0	0.004	0.060	0.052	0.135	1.6
5.0	0.005	0.025	0.050	0.110	
10.0	0.004	0.025	0.050	0.100	
20.0	0.004	0.068	0.052	0.100	
30.0	0.011	0.050	0.087	0.175	
50.0	0.048	0.019	0.287	0.560	
75.0	0.051	0.013	0.300	0.285	
100.0	0.061	0.009	0.300	0.315	
150.0	0.075	0.010	0.287	0.370	
165.0					
185.0	0.082	0.019	0.300	2.200	

C-REF-NO 022
 CONS. NO 058
 COUNTRY 18
 INSTITUTE 22

LAT 43-30-18N
 LON 077-00-00W

YEAR 1968
 MONTH 10
 DAY 30
 TIME 1323

NO. DEPTHS 01
 SOUNDING 2210
 BT SLIDE NO 058

DEPTH	SECCHI	FOREL	TEMP	T CLAS	TURB	CON 25	02 W	T P04
0.0	4.0	6	13.80					

DEPTH	SR P04	NH3	TFNO3	R SIO2	CHLORA
0.0					1.7

C-REF-NO 022
 CONS. NO 059
 COUNTRY 18
 INSTITUTE 22

LAT 43-34-42N
 LON 077-00-00W

YEAR 1968
 MONTH 10
 DAY 30
 TIME 1437

NO. DEPTHS 10
 SOUNDING 1844
 BT SLIDE NO 059

DEPTH	SECCHI	FOREL	TEMP	T CLAS	TURB	CON 25	02 W	T P04
1.0	3.5	10	13.69	0.02	0.1	470	9.95	0.046
5.0			13.69	0.01	0.1	477	9.97	
10.0			13.72	0.01	0.1	475	9.97	
20.0			13.73	0.02	0.1	476	9.98	
30.0			13.73	0.01	0.1	476	9.98	
50.0			5.41	0.03	0.2	485	11.69	
75.0			4.06	0.01	0.1	485	12.90	
100.0			3.92	0.01	0.2	488	12.91	
150.0			3.81	0.03	0.4	489	12.39	
182.0			3.78	0.00	0.2	491	11.82	

DEPTH	SR P04	NH3	TFNO3	R SIO2	CHLORA
1.0	0.015	0.072	0.085	0.285	1.6
5.0	0.013	0.075	0.063	0.195	
10.0	0.020	0.056	0.067	0.215	
20.0	0.011	0.056	0.065	0.210	
30.0	0.015	0.056	0.073	0.225	
50.0	0.037	0.053	0.295	0.270	
75.0	0.050	0.048	0.320	0.380	
100.0	0.050	0.055	0.320	0.425	
150.0	0.067	0.052	0.325	1.375	
182.0	0.077	0.052	0.325	1.950	

C-REF-NO 022
 CONS. NO 060
 COUNTRY 18
 INSTITUTE 22

LAT 43-39-00N
 LON 077-00-00W

YEAR 1968
 MONTH 10
 DAY 30
 TIME 1522

NO. DEPTHS 01
 SOUNDING 1433
 BT SLIDE NO 060

DEPTH	SECCHI	FOREL	TEMP	T CLAS	TURB	CON 25	02 W	T P04
0.0	3.0	7	13.00					

DEPTH	SR P04	NH3	TFNO3	R SIO2	CHLORA
0.0					1.8

C-REF-NO 022
 CONS. NO 061
 COUNTRY 18
 INSTITUTE 22

LAT 43-43-18N
 LON 077-00-00W

YEAR 1968
 MONTH 10
 DAY 30
 TIME 1622

NO. DEPTHS 08
 SOUNDING 1042
 BT SLIDE NO 061

DEPTH	SECCHI	FOREL	TEMP	T CLAS	TURB	CON 25	02 W	T P04
1.0	4.0	7	12.81	0.01	0.1	480	10.20	0.048
5.0			12.81	0.02	0.1	481	10.38	
10.0			12.81	0.00	0.2	479	10.31	
20.0			12.80	0.00	0.1	480	10.30	
30.0			12.80	0.01	0.1	479	10.25	
50.0			6.54	0.00	0.1	486	10.86	
75.0			4.32	0.01	0.2	487	12.38	
100.0								

DEPTH	SR P04	NH3	TFNO3	R SIO2	CHLORA
1.0	0.009	0.115	0.075	0.430	1.7
5.0	0.010	0.085	0.067	0.185	
10.0	0.016	0.091	0.073	0.225	
20.0	0.010	0.085	0.075	0.210	
30.0	0.012	0.099	0.075	0.200	
50.0	0.045	0.067	0.293	0.300	
75.0	0.068	0.061	0.300	1.500	
100.0	0.075	0.057	0.325	1.550	

C-REF-NO 022
 CONS. NO 062
 COUNTRY 18
 INSTITUTE 22

LAT 43-47-42N
 LON 077-00-00W

YEAR 1968
 MONTH 10
 DAY 30
 TIME 1705

NO. DEPTHS 01
 SOUNDING 0640
 BT SLIDE NO 062

DEPTH	SECCHI	FOREL	TEMP	T CLAS	TURB	CON 25	02 W	T P04
0.0	11.0	8	13.00					

DEPTH	SR P04	NH3	TFNO3	R SIO2	CHLORA
0.0					1.5

C-REF-NO 022
 CONS. NO 063
 COUNTRY 18
 INSTITUTE 22

LAT 43-52-00N
 LON 077-00-00W

YEAR 1968
 MONTH 10
 DAY 30
 TIME 1758

NO. DEPTHS 04
 SOUNDING 0152
 BT SLIDE NO 063

DEPTH	SECCHI	FOREL	TEMP	T CLAS	TURB	CON 25	02 W	T P04
1.0	12.0	6	12.06	0.01	0.2	465	10.22	0.047
5.0			12.06	0.02	0.2	456	10.56	
10.0			11.38	0.00	0.2	458	10.02	
13.0			11.21	0.01	0.4	462	10.13	

DEPTH	SR P04	NH3	TFNO3	R SIO2	CHLORA
1.0	0.018	0.048	0.112	0.380	1.4
5.0	0.029	0.022	0.119	0.415	
10.0	0.028	0.023	0.143	0.485	
13.0	0.024	0.024	0.143	0.492	

C-REF-NO 022
 CONS. NO 064
 COUNTRY 18
 INSTITUTE 22

LAT 43-52-00N
 LON 076-42-00W

YEAR 1968
 MONTH 10
 DAY 30
 TIME 1917

NO. DEPTHS 01
 SOUNDING 0396
 BT SLIDE NO 064

DEPTH	SECCHI	FOREL	TEMP	T CLAS	TURB	CON 25	02 W	T P04
0.0	11.0	6	12.90					

DEPTH	SR P04	NH3	TFNO3	R SIO2	CHLORA
0.0					1.3

C-REF-NO 022
 CONS. NO 065
 COUNTRY 18
 INSTITUTE 22

LAT 43-39-00N
 LON 076-42-00W

YEAR 1968
 MONTH 10
 DAY 30
 TIME 2033

NO. DEPTHS 01
 SOUNDING 1524
 BT SLIDE NO 065

DEPTH	SECCHI	FOREL	TEMP	T CLAS	TURB	CON 25	02 W	T P04
0.0	14.0	6	13.00					

DEPTH	SR P04	NH3	TFNO3	R SIO2	CHLORA
0.0					1.4

C-REF-NO 022
 CONS. NO 066
 COUNTRY 18
 INSTITUTE 22

LAT 43-26-00N
 LON 076-42-00W

YEAR 1968
 MONTH 10
 DAY 30
 TIME 2149

NO. DEPTHS 01
 SOUNDING 0610
 BT SLIDE NO 066

DEPTH	SECCHI	FOREL	TEMP	T CLAS	TURB	CON 25	02 W	T P04
0.0			12.60					

DEPTH	SR P04	NH3	TFNO3	R SIO2	CHLORA
0.0					1.4

C-REF-NO 022
 CONS. NO 067
 COUNTRY 18
 INSTITUTE 22

LAT 43-32-00N
 LON 076-24-00W

YEAR 1968
 MONTH 10
 DAY 31
 TIME 0006

NO. DEPTHS 07
 SOUNDING 0594
 BT SLIDE NO 067

DEPTH	SECCHI	FOREL	TEMP	T CLAS	TURB	CON 25	O2 W	T P04
1.0			12.68	0.02	0.2	484	9.98	0.075
5.0			12.68	0.02	0.4	476	10.05	
10.0			12.69	0.01	0.4	476	10.06	
20.0			12.67	0.02	0.4	375	10.06	
30.0			12.60	0.01	0.4	474	10.08	
50.0			12.50	0.02	0.4	475	10.02	
55.0			12.48	0.00	0.4	471	10.03	

DEPTH	SR P04	NH3	TFNO3	R SIO2	CHLORA
1.0	0.023	0.067	0.060	0.155	1.9
5.0	0.024	0.050	0.050	0.135	
10.0	0.035	0.044	0.034	0.170	
20.0	0.023	0.066	0.035	0.150	
30.0	0.028	0.043	0.025	0.150	
50.0	0.031	0.080	0.030	0.155	
55.0	0.030	0.056	0.028	0.165	

C-REF-NO 022
 CONS. NO 068
 COUNTRY 18
 INSTITUTE 22

LAT 43-39-00N
 LON 076-24-00W

YEAR 1968
 MONTH 10
 DAY 31
 TIME 0121

NO. DEPTHS 08
 SOUNDING 0990
 BT SLIDE NO 068

DEPTH	SECCHI	FOREL	TEMP	T CLAS	TURB	CON 25	O2 W	T P04
1.0			12.88	0.02	0.1	476	10.05	0.090
5.0			12.93	0.01	0.2	470	10.00	
10.0			12.92	0.01	0.1	469	9.98	
20.0			12.93	0.03	0.1	466	9.97	
30.0			12.93	0.01	0.1	469	9.97	
50.0			12.76	0.02	0.2	458	10.16	
75.0			8.19	0.01	0.1	462	10.52	
95.0			5.26	0.01	0.3	471	10.50	

DEPTH	SR P04	NH3	TFNO3	R SIO2	CHLORA
1.0	0.022	0.068	0.055	0.155	2.2
5.0	0.025	0.067	0.068	0.155	
10.0	0.024	0.048	0.055	0.150	
20.0	0.024	0.061	0.054	0.150	
30.0	0.024	0.054	0.063	0.150	
50.0	0.027	0.074	0.068	0.170	
75.0	0.038	0.022	0.250	0.440	
95.0	0.061	0.015	0.288	0.475	

C-REF-NO 022
 CONS. NO 069
 COUNTRY 18
 INSTITUTE 22

LAT 43-43-12N
 LON 076-24-00W

YEAR 1968
 MONTH 10
 DAY 31
 TIME 0156

NO. DEPTHS 01
 SOUNDING 0573
 BT SLIDE NO 069

DEPTH	SECCHI	FOREL	TEMP	T CLAS	TURB	CON 25	02 W	T P04
0.0			12.70					

DEPTH	SR P04	NH3	TFN03	R SIO2	CHLORA
0.0					2.5

C-REF-NO 022
 CONS. NO 070
 COUNTRY 18
 INSTITUTE 22

LAT 43-47-42N
 LON 076-24-00W

YEAR 1968
 MONTH 10
 DAY 31
 TIME 0234

NO. DEPTHS 01
 SOUNDING 0457
 BT SLIDE NO 070

DEPTH	SECCHI	FOREL	TEMP	T CLAS	TURB	CON 25	02 W	T P04
0.0			12.90					

DEPTH	SR P04	NH3	TFN03	R SIO2	CHLORA
0.0					1.6

C-REF-NO 022
 CONS. NO 071
 COUNTRY 18
 INSTITUTE 22

LAT 43-52-00N
 LON 076-24-00W

YEAR 1968
 MONTH 10
 DAY 31
 TIME 0327

NO. DEPTHS 04
 SOUNDING 0140
 BT SLIDE NO 071

DEPTH	SECCHI	FOREL	TEMP	T CLAS	TURB	CON 25	02 W	T P04
1.0			13.05	0.01	0.2	456	10.05	0.075
5.0			13.06	0.00	0.1	454	10.05	
10.0			13.05	0.01	0.1	457	10.03	
12.0			13.05	0.01	0.1	465	10.03	

DEPTH	SR P04	NH3	TFN03	R SIO2	CHLORA
1.0	0.017	0.050	0.075	0.315	1.4
5.0	0.018	0.049	0.052	0.295	
10.0	0.017	0.050	0.050	0.275	
12.0	0.020	0.048	0.052	0.280	

C-REF-NO 022
 CONS. NO 072
 COUNTRY 18
 INSTITUTE 22

LAT 43-56-18N
 LON 076-12-00W

YEAR 1968
 MONTH 10
 DAY 31
 TIME 0447

NO. DEPTHS 04
 SOUNDING 0223
 BT SLIDE NO 072

DEPTH	SECCHI	FOREL	TEMP	T CLAS	TURB	CON 25	02 W	T P04
1.0			12.93	0.01	0.4	453	9.78	0.093
5.0			12.93	0.01	0.4	448	10.27	
10.0			12.95	0.00	0.6	448	9.59	
20.0			12.92	0.02	0.5	448	10.08	

DEPTH	SR P04	NH3	TFNO3	R SIO2	CHLORA
1.0	0.024	0.083	0.035	0.525	1.8
5.0	0.025	0.045	0.033	0.475	
10.0	0.026	0.047	0.034	0.550	
20.0	0.028	0.044	0.033	0.575	

C-REF-NO 022
 CONS. NO 073
 COUNTRY 18
 INSTITUTE 22

LAT 44-00-42N
 LON 076-30-00W

YEAR 1968
 MONTH 10
 DAY 31
 TIME 0641

NO. DEPTHS 05
 SOUNDING 0274
 BT SLIDE NO 073

DEPTH	SECCHI	FOREL	TEMP	T CLAS	TURB	CON 25	02 W	T P04
1.0			12.73	0.01	0.3	468	10.09	0.082
5.0			12.74	0.00	0.4	456	10.80	
10.0			12.74	0.00	0.4	457	10.14	
20.0			12.71	0.01	0.5	461	10.17	
25.0			12.60	0.01	0.5	463	10.25	

DEPTH	SR P04	NH3	TFNO3	R SIO2	CHLORA
1.0	0.017	0.058	0.080	0.230	1.6
5.0	0.017	0.039	0.080	0.230	
10.0	0.018	0.033	0.083	0.225	
20.0	0.019	0.037	0.090	0.230	
25.0	0.020	0.036	0.090	0.210	

C-REF-NO 022
 CONS. NO 074
 COUNTRY 18
 INSTITUTE 22

LAT 44-09-18N
 LON 076-36-00W

YEAR 1968
 MONTH 10
 DAY 31
 TIME 0759

NO. DEPTHS 04
 SOUNDING 0171
 BT SLIDE NO 074

DEPTH	SECCHI	FOREL	TEMP	T CLAS	TURB	CON 25	02 W	T P04
1.0			13.23	0.01	0.3	466	10.39	0.070
5.0			13.24	0.00	0.4	464	10.75	
10.0			13.24	0.01	0.4	464	9.86	
15.0			13.23	0.00	0.4	465	9.83	

DEPTH	SR P04	NH3	TFND3	R SIO2	CHLORA
1.0	0.020	0.051	0.067	0.420	1.9
5.0	0.021	0.031	0.063	0.435	
10.0	0.022	0.031	0.065	0.420	
15.0	0.021	0.032	0.064	0.435	

C-REF-NO 022
 CONS. NO 075
 COUNTRY 18
 INSTITUTE 22

LAT 44-00-36N
 LON 076-48-00W

YEAR 1968
 MONTH 10
 DAY 31
 TIME 0928

NO. DEPTHS 05
 SOUNDING 0308
 BT SLIDE NO 075

DEPTH	SECCHI	FOREL	TEMP	T CLAS	TURB	CON 25	02 W	T P04
1.0			13.17	0.02	0.1	478	9.69	0.067
5.0			13.18	0.00	0.1	478	9.81	
10.0			13.19	0.01	0.1	480	9.78	
20.0			13.19	0.02	0.1	476	9.80	
28.0			13.19	0.01	0.1	478	9.80	

DEPTH	SR P04	NH3	TFND3	R SIO2	CHLORA
1.0	0.024	0.055	0.050	0.410	2.0
5.0	0.022	0.021	0.055	0.450	
10.0	0.029	0.022	0.070	0.500	
20.0	0.026	0.057	0.062	0.450	
28.0	0.026	0.017	0.020	0.240	

CRUISE 68 - 023

C-REF-NO 023
 CONS. NO 001
 COUNTRY 18
 INSTITUTE 22

LAT 44-00-36N
 LON 076-48-00W

YEAR 1968
 MONTH 11
 DAY 18
 TIME 1507

NO. DEPTHS 03
 SOUNDING 0311
 BT SLIDE NO 001

DEPTH	SECCHI	FOREL	TEMP	T CLAS	TURB	CON 25	O2 W	T P04
1.0	5.0	8	8.97		0.8	534	10.82	0.016
10.0			8.98	0.00	0.9	533	10.89	0.015
30.0			8.99	0.01	0.9	531	10.89	0.014

DEPTH	SR P04	NH3	TFNO3	R SIO2	CHLORA	MF COL	MF FCO	SPC 20
1.0	0.008	0.046	0.114	0.395	1.8	100E00	000E00	800E01
10.0	0.006	0.032	0.104	0.330				
30.0	0.007	0.030	0.114	0.325		100E00	100E00	180E01

DEPTH	SPC 35	F RES	TT ALK	S SO4	CA NFA	MG NF	K NFS	NA NFS
1.0		199.0	91.3	30.3	41.000	8.000	1.350	13.000
10.0		203.0	91.7	29.7	41.000	8.000	1.400	12.600
30.0	160E01	203.0	91.3	30.1	41.000	7.900	1.350	13.000

DEPTH	PH 25	F	CL	HARD
1.0	7.900	0.115	27.6	135.3
10.0	8.000	0.102	27.6	135.3
30.0	7.900	0.085	27.6	134.9

C-REF-NO 023
 CONS. NO 002
 COUNTRY 18
 INSTITUTE 22

LAT 44-09-18N
 LON 076-36-00W

YEAR 1968
 MONTH 11
 DAY 18
 TIME 1650

NO. DEPTHS 03
 SOUNDING 0183
 BT SLIDE NO 002

DEPTH	SECCHI	FOREL	TEMP	T CLAS	TURB	CON 25	O2 W	T P04
1.0	4.5	8	8.60	0.00	1.0	331	11.02	0.012
10.0			8.53	0.01	0.3	333	11.03	
17.0			7.63	0.00	0.5	334	11.34	

DEPTH	SR P04	NH3	TFNO3	R SIO2	CHLORA	MF COL	MF FCO	SPC 20
1.0	0.005	0.040	0.104	0.355	2.0	800E00	200E00	390E01
10.0	0.004	0.020	0.086	0.340		200E00		110E01
17.0	0.004	0.031	0.084	0.332		200E00		170E02

DEPTH	SPC 35
1.0	260E01
10.0	280E01
17.0	730E01

C-REF-NO 023
 CONS. NO 003
 COUNTRY 18
 INSTITUTE 22

LAT 44-00-42N
 LON 076-30-00W

YEAR 1968
 MONTH 11
 DAY 18
 TIME 1830

NO. DEPTHS 02
 SOUNDING 0280
 BT SLIDE NO 003

DEPTH	SECCHI	FOREL	TEMP	T CLAS	TURB	CON 25	O2 W	T P04
1.0	3.0	8	8.23	0.00	0.4	334	11.06	0.013
25.0			8.21	0.01	0.4	336	11.06	

DEPTH	SR P04	NH3	TFNO3	R SIO2	CHLORA	MF COL	MF FCO	SPC 20
1.0	0.005	0.024	0.132	0.280	1.6	500E00	000E00	550E01
25.0	0.005	0.027	0.130	0.280		400E00	000E00	410E01

DEPTH	SPC 35
1.0	170E01
25.0	100E01

C-REF-NO 023
 CONS. NO 004
 COUNTRY 18
 INSTITUTE 22

LAT 43-56-18N
 LON 076-12-00W

YEAR 1968
 MONTH 11
 DAY 18
 TIME 2011

NO. DEPTHS 03
 SOUNDING 0226
 BT SLIDE NO 004

DEPTH	SECCHI	FOREL	TEMP	T CLAS	TURB	CON 25	O2 W	T P04
1.0	2.5	9	8.00	0.01	0.3	336	11.14	0.015
10.0			7.99	0.00				
19.0			7.99	0.00	0.3	330	11.14	0.013

DEPTH	SR P04	NH3	TFNO3	R SIO2	CHLORA	MF COL	MF FCO	SPC 20
1.0	0.005	0.027	0.094	0.280	1.7	200E00	000E00	620E01
10.0						500E00		370E01
19.0	0.005	0.017	0.088	0.265		000E00	000E00	350E01

DEPTH	SPC 35	F RES	TT ALK	S SO4	CA NFA	MG NF	K NFS	NA NFS
1.0	330E01	195.0	89.8	29.3	41.000	7.900	1.350	12.700
10.0	140E01							
19.0	140E01	198.0	90.3	29.9	41.000	7.900	1.350	12.500

DEPTH	PH 25	F	CL	HARD
1.0	7.800	0.106	27.1	134.9
10.0				
19.0	7.900	0.115	27.1	134.9

C-REF-NO 023
CONS. NO 005
COUNTRY 18
INSTITUTE 22

LAT 43-52-00N
LON 076-24-00W

YEAR 1968
MONTH 11
DAY 18
TIME 2137

NO. DEPTHS 03
SOUNDING 0244
BT SLIDE NO 005

DEPTH	SECCHI	FOREL	TEMP	T CLAS	TURB	CON 25	O2 W	T P04
1.0			8.11	0.01	0.2	335	11.11	0.013
10.0			8.10	0.00	0.2	334	11.11	
20.0			8.09	0.01	0.2	333	11.11	

DEPTH	SR P04	NH3	TFNO3	R SIO2	CHLORA	MF COL	MF FCO	SPC 20
1.0	0.008	0.012	0.144	0.325	2.2	300E00	000E00	370E01
10.0						300E00		320E01
20.0	0.007	0.023	0.127	0.305		300E00	000E00	170E01

DEPTH	SPC 35
1.0	110E01
10.0	110E01
20.0	200E01

C-REF-NO 023
CONS. NO 006
COUNTRY 18
INSTITUTE 22

LAT 43-47-42N
LON 076-24-00W

YEAR 1968
MONTH 11
DAY 18
TIME 2214

NO. DEPTHS 01
SOUNDING 0448
BT SLIDE NO 006

DEPTH	SECCHI	FOREL	TEMP	T CLAS	TURB	CON 25	O2 W	T P04
0.0			8.00					

DEPTH	SR P04	NH3	TFNO3	R SIO2	CHLORA	MF COL	MF FCO	SPC 20
0.0					1.8			

DEPTH	SPC 35
0.0	

C-REF-NO 023
 CONS. NO 007
 COUNTRY 18
 INSTITUTE 22

LAT 43-43-12N
 LON 076-24-00W

YEAR 1968
 MONTH 11
 DAY 18
 TIME 2300

NO. DEPTHS 03
 SOUNDING 0543
 BT SLIDE NO 007

DEPTH	SECCHI	FOREL	TEMP	T CLAS	TURB	CON 25	O2 W	T PD4
1.0			8.22	0.00				
10.0			8.20	0.00				
50.0			4.79	0.01				

DEPTH	SR PD4	NH3	TFNO3	R SIO2	CHLORA	MF COL	MF FCO	SPC 20
1.0					1.3	500E00	100E00	290E01
10.0						100E00		400E01
50.0						300E00	000E00	

DEPTH	SPC 35
1.0	230E01
10.0	400E00
50.0	280E01

C-REF-NO 023
 CONS. NO 008
 COUNTRY 18
 INSTITUTE 22

LAT 43-39-00N
 LON 076-24-00W

YEAR 1968
 MONTH 11
 DAY 18
 TIME 2348

NO. DEPTHS 03
 SOUNDING 0908
 BT SLIDE NO 008

DEPTH	SECCHI	FOREL	TEMP	T CLAS	TURB	CON 25	O2 W	T PD4
1.0			8.86	0.02	0.2	336	10.88	0.013
50.0			7.98	0.01	0.4	335	10.96	0.013
89.0			4.62	0.01	0.2	344	10.66	0.039

DEPTH	SR PD4	NH3	TFNO3	R SIO2	CHLORA	MF COL	MF FCO	SPC 20
1.0	0.006	0.021	0.150	0.275	1.4	200E00	000E00	310E01
50.0	0.007	0.019	0.145	0.300				
89.0	0.010	0.017	0.270	0.900		110E01	000E00	220E02

DEPTH	SPC 35	F RES	TT ALK	S SO4	CA NFA	MG NF	K NFS	NA NFS
1.0	160E01	204.0	91.3	29.7	42.000	7.900	1.350	12.800
50.0		198.0	92.2	30.1	41.000	7.900	1.350	12.600
89.0	540E01	207.0	94.7	29.7	41.000	7.900	1.350	12.700

DEPTH	PH 25	F	CL	HARD
1.0	8.000	0.109	27.3	137.4
50.0	7.900	0.111	27.6	134.9
89.0	7.800	0.115	27.9	134.9

C-REF-NO 023
 CONS. NO 009
 COUNTRY 18
 INSTITUTE 22

LAT 43-34-00N
 LON 076-24-00W

YEAR 1968
 MONTH 11
 DAY 19
 TIME 0041

NO. DEPTHS 04
 SOUNDING 0610
 BT SLIDE NO 009

DEPTH	SECCHI	FOREL	TEMP	T CLAS	TURB	CON 25	O2 W	T P04
1.0			7.55	0.01	0.6	338	11.03	0.015
10.0			7.55	0.02				
50.0			5.31	0.01	0.6	340	11.28	
58.0			5.15	0.01	1.0	349	11.37	

DEPTH	SR P04	NH3	TFNO3	R SIO2	CHLORA	MF COL	MF FCO	SPC 20
1.0	0.008	0.034	0.275	0.425	1.3	400E00	000E00	120E02
10.0						300E00		130E02
50.0	0.011	0.042	0.300	0.840				
58.0	0.010	0.028	0.335	0.825		700E00	100E00	380E02

DEPTH	SPC 35
1.0	800E00
10.0	210E01
50.0	
58.0	300E01

C-REF-NO 023
 CONS. NO 010
 COUNTRY 18
 INSTITUTE 22

LAT 43-28-36N
 LON 076-32-06W

YEAR 1968
 MONTH 11
 DAY 19
 TIME 0202

NO. DEPTHS 03
 SOUNDING 0158
 BT SLIDE NO 010

DEPTH	SECCHI	FOREL	TEMP	T CLAS	TURB	CON 25	O2 W	T P04
1.0			5.15	0.02				
10.0			5.29	0.01				
14.0			5.69	0.01				

DEPTH	SR P04	NH3	TFNO3	R SIO2	CHLORA	MF COL	MF FCO	SPC 20
1.0						440E01	300E00	690E02
10.0						860E01		270E03
14.0						320E02	140E02	140E03

DEPTH	SPC 35
1.0	420E01
10.0	160E02
14.0	700E01

C-REF-NO 023
 CONS. NO 011
 COUNTRY 18
 INSTITUTE 22

LAT 43-23-00N
 LON 076-42-00W

YEAR 1968
 MONTH 11
 DAY 19
 TIME 0320

NO. DEPTHS 03
 SOUNDING 0177
 BT SLIDE NO 011

DEPTH	SECCHI	FOREL	TEMP	T CLAS	TURB	CON 25	O2 W	T P04
1.0			5.23	0.02				
10.0			5.21	0.01				
15.0			5.21	0.01				

DEPTH	SR P04	NH3	TFNO3	R SIO2	CHLORA	MF COL	MF FCO	SPC 20
1.0						400E00	000E00	150E03
10.0						200E01		180E03
15.0						170E01	600E00	130E03

DEPTH	SPC 35
1.0	800E01
10.0	500E01
15.0	100E02

C-REF-NO 023
 CONS. NO 012
 COUNTRY 18
 INSTITUTE 22

LAT 43-26-00N
 LON 076-42-00W

YEAR 1968
 MONTH 11
 DAY 19
 TIME 0356

NO. DEPTHS 04
 SOUNDING 0671
 BT SLIDE NO 012

DEPTH	SECCHI	FOREL	TEMP	T CLAS	TURB	CON 25	O2 W	T P04
1.0			5.23	0.01				
10.0			5.25	0.01				
50.0			5.25	0.00				
65.0			5.02	0.01				

DEPTH	SR P04	NH3	TFNO3	R SIO2	CHLORA	MF COL	MF FCO	SPC 20
1.0					1.0	320E01	800E00	820E02
10.0						360E01		140E03
50.0						120E01		670E02
65.0						180E01	120E01	460E02

DEPTH	SPC 35
1.0	120E02
10.0	100E02
50.0	120E02
65.0	850E01

C-REF-NO 023
CONS. NO 013
COUNTRY 18
INSTITUTE 22

LAT 43-39-00N
LON 076-42-00W

YEAR 1968
MONTH 11
DAY 19
TIME 0539

NO. DEPTHS 02
SOUNDING 1469
BT SLIDE NO 013

DEPTH	SECCHI	FOREL	TEMP	T CLAS	TURB	CON 25	O2 W	T P04
1.0			8.32	0.00				
140.0			3.78	0.00				

DEPTH	SR P04	NH3	TFN03	R SIO2	CHLORA	MF COL	MF FCO	SPC 20
1.0					1.3	000E00		
140.0						000E00		600E00

DEPTH	SPC 35
1.0	600E00
140.0	800E00

C-REF-NO 023
CONS. NO 014
COUNTRY 18
INSTITUTE 22

LAT 43-52-00N
LON 076-42-00W

YEAR 1968
MONTH 11
DAY 19
TIME 0710

NO. DEPTHS 02
SOUNDING 0387
BT SLIDE NO 014

DEPTH	SECCHI	FOREL	TEMP	T CLAS	TURB	CON 25	O2 W	T P04
1.0			8.58	0.01				
36.0			6.41	0.00				

DEPTH	SR P04	NH3	TFN03	R SIO2	CHLORA	MF COL	MF FCO	SPC 20
1.0					1.1	200E00		
36.0						000E00		800E00

DEPTH	SPC 35
1.0	150E01
36.0	400E00

C-REF-NO 023
 CONS. NO 015
 COUNTRY 18
 INSTITUTE 22

LAT 43-52-00N
 LON 077-00-00W

YEAR 1968
 MONTH 11
 DAY 19
 TIME 0856

NO. DEPTHS 02
 SOUNDING 0192
 BT SLIDE NO 015

DEPTH	SECCHI	FOREL	TEMP	T CLAS	TURB	CON 25	O2 W	T P04
1.0			8.77	0.00	0.7	336	11.02	0.012
17.0			8.77	0.01	0.6	336	10.99	

DEPTH	SR P04	NH3	TFNO3	R SIO2	CHLORA	MF COL	MF FCO	SPC 20
1.0	0.005	0.050	0.070	0.340	1.3	200E00	000E00	600E00
17.0	0.006	0.028	0.065	0.320		200E00	000E00	

DEPTH	SPC 35
1.0	600E00
17.0	

C-REF-NO 023
 CONS. NO 016
 COUNTRY 18
 INSTITUTE 22

LAT 43-47-42N
 LON 077-00-00W

YEAR 1968
 MONTH 11
 DAY 19
 TIME 0943

NO. DEPTHS 02
 SOUNDING 0579
 BT SLIDE NO 016

DEPTH	SECCHI	FOREL	TEMP	T CLAS	TURB	CON 25	O2 W	T P04
1.0			8.88	0.01				
55.0			4.42	0.01				

DEPTH	SR P04	NH3	TFNO3	R SIO2	CHLORA	MF COL	MF FCO	SPC 20
1.0					1.7	100E00		130E01
55.0						100E00		

DEPTH	SPC 35
1.0	140E01
55.0	

C-REF-NO 023
 CONS. NO 017
 COUNTRY 18
 INSTITUTE 22

LAT 43-43-18N
 LON 077-00-00W

YEAR 1968
 MONTH 11
 DAY 19
 TIME 1042

NO. DEPTHS 03
 SOUNDING 0929
 BT SLIDE NO 017

DEPTH	SECCHI	FOREL	TEMP	T CLAS	TURB	CON 25	O2 W	T P04
1.0			8.92	0.00	0.4	331	10.92	0.011
50.0			6.37	0.00	0.3	336	11.59	0.015
90.0			4.02	0.01	0.7	340	11.70	0.023

DEPTH	SR P04	NH3	TFN03	R SIO2	CHLORA	MF COL	MF FCO	SPC 20
1.0	0.006	0.045	0.145	0.750	1.4			
50.0	0.008	0.022	0.185	0.250				
90.0	0.010	0.011	0.280	0.320				

DEPTH	SPC 35	F RES	TT ALK	S SO4	CA NFA	MG NF	K NFS	NA NFS
1.0		198.0	91.7	29.7	42.000	7.900	1.350	13.000
50.0		202.0	93.2	29.7	41.000	8.000	1.350	13.200
90.0		204.0	94.7	29.9	41.000	7.900	1.350	12.900

DEPTH	PH 25	F	CL	HARD
1.0	7.800	0.116	27.3	137.4
50.0	7.900	0.120	27.5	135.3
90.0	7.800	0.122	27.6	134.9

C-REF-NO 023
 CONS. NO 018
 COUNTRY 18
 INSTITUTE 22

LAT 43-39-00N
 LON 077-00-00W

YEAR 1968
 MONTH 11
 DAY 19
 TIME 1141

NO. DEPTHS 02
 SOUNDING 1463
 BT SLIDE NO 018

DEPTH	SECCHI	FOREL	TEMP	T CLAS	TURB	CON 25	O2 W	T P04
1.0			8.32	0.01				
141.0			3.80	0.00				

DEPTH	SR P04	NH3	TFN03	R SIO2	CHLORA	MF COL	MF FCO	SPC 20
1.0					1.4	400E00		700E00
141.0						300E00		100E01

DEPTH	SPC 35
1.0	140E01
141.0	160E01

C-REF-NO 023
 CONS. NO 019
 COUNTRY 18
 INSTITUTE 22

LAT 43-34-42N
 LON 077-00-00W

YEAR 1968
 MONTH 11
 DAY 19
 TIME 1233

NO. DEPTHS 03
 SOUNDING 1874
 BT SLIDE NO 019

DEPTH	SECCHI	FOREL	TEMP	T CLAS	TURB	CON 25	O2 W	T PO4
1.0	3.0	7	6.97	0.02	0.3	338	11.50	0.011
49.0			6.76	0.00	0.3	334	11.53	
181.0			3.96	0.01	0.8	342	11.51	

DEPTH	SR PO4	NH3	TFNO3	R SIO2	CHLORA	MF COL	MF FCO	SPC 20
1.0	0.007	0.034	0.180	0.350	1.3			
49.0	0.009	0.038	0.245	0.480				
181.0	0.011	0.010	0.310	1.100				

DEPTH	SPC 35
1.0	
49.0	
181.0	

C-REF-NO 023
 CONS. NO 020
 COUNTRY 18
 INSTITUTE 22

LAT 43-30-18N
 LON 077-00-00W

YEAR 1968
 MONTH 11
 DAY 19
 TIME 1331

NO. DEPTHS 01
 SOUNDING 2225
 BT SLIDE NO 020

DEPTH	SECCHI	FOREL	TEMP	T CLAS	TURB	CON 25	O2 W	T PO4
0.0	7.0	9	9.00					

DEPTH	SR PO4	NH3	TFNO3	R SIO2	CHLORA	MF COL	MF FCO	SPC 20
0.0					1.2			

DEPTH	SPC 35
0.0	

C-REF-NO 023
 CONS. NO 021
 COUNTRY 18
 INSTITUTE 22

LAT 43-26-00N
 LON 077-00-00W

YEAR 1968
 MONTH 11
 DAY 19
 TIME 1453

NO. DEPTHS 03
 SOUNDING 1829
 BT SLIDE NO 021

DEPTH	SECCHI	FOREL	TEMP	T CLAS	TURB	CON 25	O2 W	T P04
1.0	7.0	8	6.76	0.01	0.4	339	11.57	0.012
100.0			4.63	0.01	0.5	338	12.27	0.013
180.0			3.82	0.00	1.0	339	11.42	0.018

DEPTH	SR P04	NH3	TFNO3	R SIO2	CHLORA	MF COL	MF FCO	SPC 20
1.0	0.007	0.035	0.215	0.480	1.1	800E00		530E01
100.0	0.008	0.026	0.290	0.490				
180.0	0.011	0.020	0.330	1.340		600E00		220E01

DEPTH	SPC 35	F RES	TT ALK	S SO4	CA NFA	MG NF	K NFS	NA NFS
1.0	310E01	202.0	93.7	29.9	42.500	8.000	1.380	12.900
100.0		199.0	94.7	30.3	42.500	7.900	1.350	12.900
180.0		192.0	95.6	29.7	41.000	7.900	1.350	12.800

DEPTH	PH 25	F	CL	HARD
1.0	7.900	0.114	27.2	139.1
100.0	8.000	0.120	26.9	138.7
180.0	7.800	0.114	26.8	134.9

C-REF-NO 023
 CONS. NO 022
 COUNTRY 18
 INSTITUTE 22

LAT 43-21-42N
 LON 077-00-00W

YEAR 1968
 MONTH 11
 DAY 19
 TIME 1605

NO. DEPTHS 02
 SOUNDING 0732
 BT SLIDE NO 022

DEPTH	SECCHI	FOREL	TEMP	T CLAS	TURB	CON 25	O2 W	T P04
1.0	5.5	80	6.76	0.01				
71.0			4.59	0.00				

DEPTH	SR P04	NH3	TFNO3	R SIO2	CHLORA	MF COL	MF FCO	SPC 20
1.0					1.2	150E01		290E01
71.0						400E00		310E01

DEPTH	SPC 35
1.0	150E01
71.0	600E00

C-REF-NO 023
 CONS. NO 023
 COUNTRY 18
 INSTITUTE 22

LAT 43-17-12N
 LON 077-00-00W

YEAR 1968
 MONTH 11
 DAY 19
 TIME 1651

NO. DEPTHS 03
 SOUNDING 0091
 BT SLIDE NO 023

DEPTH	SECCHI	FOREL	TEMP	T CLAS	TURB	CON 25	O2 W	T P04
1.0	5.0	8	5.35	0.01	1.5	355	12.05	0.018
5.0			5.24	0.01	1.0	344	12.00	
7.0			5.35	0.01	1.5	347	12.07	

DEPTH	SR P04	NH3	TFNO3	R SIO2	CHLORA	MF COL	MF FCO	SPC 20
1.0	0.010	0.015	0.290	0.650	1.1	180E01		110E02
5.0	0.009	0.027	0.285	0.630				
7.0	0.008	0.022	0.280	0.630		160E01		970E01

DEPTH	SPC 35
1.0	770E01
5.0	
7.0	490E01

C-REF-NO 023
 CONS. NO 024
 COUNTRY 18
 INSTITUTE 22

LAT 43-18-42N
 LON 077-18-00W

YEAR 1968
 MONTH 11
 DAY 19
 TIME 1851

NO. DEPTHS 03
 SOUNDING 0384
 BT SLIDE NO 024

DEPTH	SECCHI	FOREL	TEMP	T CLAS	TURB	CON 25	O2 W	T P04
1.0	3.0	9	5.76	0.01				
10.0			5.77	0.01				
35.0			5.77	0.00				

DEPTH	SR P04	NH3	TFNO3	R SIO2	CHLORA	MF COL	MF FCO	SPC 20
1.0						120E01		110E02
10.0						500E00		720E01
35.0						900E00		860E01

DEPTH	SPC 35
1.0	940E01
10.0	330E01
35.0	500E01

C-REF-NO 023
 CONS. NO 025
 COUNTRY 18
 INSTITUTE 22

LAT 43-26-00N
 LON 077-18-00W

YEAR 1968
 MONTH 11
 DAY 19
 TIME 1957

NO. DEPTHS 02
 SOUNDING 2057
 BT SLIDE NO 025

DEPTH	SECCHI	FOREL	TEMP	T CLAS	TURB	CON 25	O2 W	T P04
1.0	4.0	7	7.91	0.01				
201.0			3.83					

DEPTH	SR P04	NH3	TFNO3	R SIO2	CHLORA	MF COL	MF FCO	SPC 20
1.0					1.1	000E00		140E01
201.0						900E00		320E01

DEPTH	SPC 35
1.0	700E00
201.0	140E01

C-REF-NO 023
 CONS. NO 026
 COUNTRY 18
 INSTITUTE 22

LAT 43-52-00N
 LON 077-36-00W

YEAR 1968
 MONTH 11
 DAY 20
 TIME 1616

NO. DEPTHS 02
 SOUNDING 0457
 BT SLIDE NO 026

DEPTH	SECCHI	FOREL	TEMP	T CLAS	TURB	CON 25	O2 W	T P04
1.0	4.8	8	8.08	0.01				
44.0			5.44	0.02				

DEPTH	SR P04	NH3	TFNO3	R SIO2	CHLORA	MF COL	MF FCO	SPC 20
1.0					1.3	700E00		600E00
44.0						100E00		300E01

DEPTH	SPC 35
1.0	160E01
44.0	180E01

C-REF-NO 023
 CONS. NO 027
 COUNTRY 18
 INSTITUTE 22

LAT 43-56-18N
 LON 077-36-00W

YEAR 1968
 MONTH 11
 DAY 20
 TIME 1705

NO. DEPTHS 03
 SOUNDING 0229
 BT SLIDE NO 027

DEPTH	SECCHI	FOREL	TEMP	T CLAS	TURB	CON 25	O2 W	T P04
1.0	3.0	9	8.33	0.01				
10.0			8.34	0.01				
21.0								

DEPTH	SR P04	NH3	TFN03	R SID2	CHLORA	MF COL	MF FCO	SPC 20
1.0						000E00	000E00	570E01
10.0						000E00		420E01
21.0						000E00	000E00	130E01

DEPTH	SPC 35
1.0	110E01
10.0	700E00
21.0	900E00

C-REF-NO 023
 CONS. NO 028
 COUNTRY 18
 INSTITUTE 22

LAT 43-52-54N
 LON 077-32-00W

YEAR 1968
 MONTH 11
 DAY 20
 TIME 1741

NO. DEPTHS 03
 SOUNDING 0427
 BT SLIDE NO 028

DEPTH	SECCHI	FOREL	TEMP	T CLAS	TURB	CON 25	O2 W	T P04
1.0	3.0	10	8.32	0.01				
10.0			8.32	0.00				
39.0			7.57	0.38				

DEPTH	SR P04	NH3	TFN03	R SID2	CHLORA	MF COL	MF FCO	SPC 20
1.0						400E00	000E00	430E01
10.0						200E00		160E01
39.0						000E00	000E00	280E01

DEPTH	SPC 35
1.0	600E00
10.0	500E00
39.0	500E00

C-REF-NO 023
 CONS. NO 029
 COUNTRY 18
 INSTITUTE 22

LAT 43-52-00N
 LON 077-18-00W

YEAR 1968
 MONTH 11
 DAY 20
 TIME 1859

NO. DEPTHS 03
 SOUNDING 0259
 BT SLIDE NO 029

DEPTH	SECCHI	FOREL	TEMP	T CLAS	TURB	CON 25	O2 W	T P04
1.0	3.0	10	8.63	0.01				
10.0			8.64	0.01				
23.0			8.65	0.03				

DEPTH	SR P04	NH3	TFNO3	R SIO2	CHLORA	MF COL	MF FCO	SPC 20
1.0					1.3	100E00		510E01
10.0						100E00		430E01
23.0						000E00	000E00	310E01

DEPTH	SPC 35
1.0	210E01
10.0	800E00
23.0	140E01

C-REF-NO 023
 CONS. NO 030
 COUNTRY 18
 INSTITUTE 22

LAT 43-56-18N
 LON 077-54-00W

YEAR 1968
 MONTH 11
 DAY 21
 TIME 0640

NO. DEPTHS 04
 SOUNDING 0390
 BT SLIDE NO 030

DEPTH	SECCHI	FOREL	TEMP	T CLAS	TURB	CON 25	O2 W	T P04
1.0			7.14	0.00	0.2	339	11.50	0.011
10.0			7.13	0.01				
30.0			5.45	0.01	0.3	345	11.37	0.015
35.0			5.41		0.2	347	11.40	0.011

DEPTH	SR P04	NH3	TFNO3	R SIO2	CHLORA	MF COL	MF FCO	SPC 20
1.0	0.005	0.021	0.188	0.435	1.7	200E00	000E00	900E01
10.0						000E00		270E01
30.0	0.008	0.016	0.260	0.640				
35.0	0.007	0.010	0.170	0.400		000E00	000E00	120E01

DEPTH	SPC 35	F RES	TT ALK	S SO4	CA NFA	MG NF	K NFS	NA NFS
1.0	110E01	192.0	93.2	30.6	40.500	8.000	1.350	12.600
10.0	150E01							
30.0		202.0	94.7	29.7	40.500	7.900	1.350	12.900
35.0	110E01	200.0	93.2	29.9	41.000	7.900	1.350	12.900

DEPTH	PH 25	F	CL	HARD
1.0	7.900	0.115	27.6	134.1
10.0				
30.0	8.000	0.117	27.0	133.7
35.0	7.900	0.129	27.7	134.9

C-REF-NO 023
 CONS. NO 031
 COUNTRY 18
 INSTITUTE 22

LAT 43-52-00N
 LON 077-54-00W

YEAR 1968
 MONTH 11
 DAY 21
 TIME 0751

NO. DEPTHS 03
 SOUNDING 0594
 BT SLIDE NO 031

DEPTH	SECCHI	FOREL	TEMP	T CLAS	TURB	CON 25	O2 W	T P04
1.0			6.76	0.02	0.2	336	11.34	0.013
30.0			6.64	0.00	0.2	336	11.34	
53.0			4.54	0.01	0.7	341	11.77	

DEPTH	SR P04	NH3	TFNO3	R SIO2	CHLORA	MF COL	MF FCO	SPC 20
1.0	0.010	0.020	0.450	0.550	1.8	000E00		190E01
30.0	0.007	0.010	0.215	0.550				
53.0	0.010	0.009	0.255	0.660		000E00		200E01

DEPTH	SPC 35
1.0	600E00
30.0	
53.0	130E01

C-REF-NO 023
 CONS. NO 032
 COUNTRY 18
 INSTITUTE 22

LAT 43-47-00N
 LON 077-54-00W

YEAR 1968
 MONTH 11
 DAY 21
 TIME 0846

NO. DEPTHS 01
 SOUNDING 0975
 BT SLIDE NO 032

DEPTH	SECCHI	FOREL	TEMP	T CLAS	TURB	CON 25	O2 W	T P04
0.0			7.60					

DEPTH	SR P04	NH3	TFNO3	R SIO2	CHLORA	MF COL	MF FCO	SPC 20
0.0					1.6			

DEPTH	SPC 35
0.0	

C-REF-NO 023
 CONS. NO 033
 COUNTRY 18
 INSTITUTE 22

LAT 43-43-18N
 LON 077-54-00W

YEAR 1968
 MONTH 11
 DAY 21
 TIME 0926

NO. DEPTHS 03
 SOUNDING 1234
 BT SLIDE NO 033

DEPTH	SECCHI	FOREL	TEMP	T CLAS	TURB	CON 25	O2 W	T P04
1.0			7.99	0.01	0.2	336	11.19	0.010
50.0			7.99	0.00	0.2	335	11.16	0.011
120.0			3.89	0.01	0.3	340	11.79	0.017

DEPTH	SR P04	NH3	TFNO3	R SIO2	CHLORA	MF COL	MF FCO	SPC 20
1.0	0.005	0.031	0.170	0.380	1.3			
50.0	0.005	0.025	0.154	0.220				
120.0	0.010	0.010	0.290	0.730				

DEPTH	SPC 35	F RES	TT ALK	S SO4	CA NFA	MG NF	K NFS	NA NFS
1.0		199.0	93.2	29.9	41.000	7.900	1.350	12.800
50.0		194.0	91.7	30.3	41.000	7.900	1.350	12.900
120.0		202.0	95.1	29.9	42.500	7.900	1.350	12.600

DEPTH	PH 25	F	CL	HARD
1.0	7.900	0.109	27.3	134.9
50.0	8.000	0.114	27.9	134.9
120.0	7.900	0.104	26.8	138.7

C-REF-NO 023
 CONS. NO 034
 COUNTRY 18
 INSTITUTE 22

LAT 43-39-00N
 LON 077-54-00W

YEAR 1968
 MONTH 11
 DAY 21
 TIME 1036

NO. DEPTHS 02
 SOUNDING 1524
 BT SLIDE NO 034

DEPTH	SECCHI	FOREL	TEMP	T CLAS	TURB	CON 25	O2 W	T P04
1.0			7.43	0.00				
148.0			3.94	0.03				

DEPTH	SR P04	NH3	TFNO3	R SIO2	CHLORA	MF COL	MF FCO	SPC 20
1.0					1.3	570E01		150E02
148.0						100E00		440E01

DEPTH	SPC 35
1.0	470E02
148.0	700E00

C-REF-NO 023
 CONS. NO 035
 COUNTRY 18
 INSTITUTE 22

LAT 43-34-42N
 LON 077-54-00W

YEAR 1968
 MONTH 11
 DAY 21
 TIME 1148

NO. DEPTHS 03
 SOUNDING 1783
 BT SLIDE NO 035

DEPTH	SECCHI	FOREL	TEMP	T CLAS	TURB	CON 25	O2 W	T P04
1.0			5.21	0.01	0.5	335	11.93	0.012
50.0			5.15	0.02	0.5	334	12.11	
174.0			4.07	0.02	1.0	337	12.08	

DEPTH	SR P04	NH3	TFNO3	R SIO2	CHLORA	MF COL	MF FCO	SPC 20
1.0	0.008	0.018	0.260	0.390	1.2			
50.0	0.009	0.009	0.255	0.320				
174.0	0.010	0.013	0.290	0.540				

DEPTH	SPC 35
1.0	
50.0	
174.0	

C-REF-NO 023
 CONS. NO 036
 COUNTRY 18
 INSTITUTE 22

LAT 43-30-18N
 LON 077-54-00W

YEAR 1968
 MONTH 11
 DAY 21
 TIME 1252

NO. DEPTHS 01
 SOUNDING 1783
 BT SLIDE NO 036

DEPTH	SECCHI	FOREL	TEMP	T CLAS	TURB	CON 25	O2 W	T P04
0.0			5.60					

DEPTH	SR P04	NH3	TFNO3	R SIO2	CHLORA	MF COL	MF FCO	SPC 20
0.0					1.0			

DEPTH	SPC 35
0.0	

C-REF-NO 023
 CONS. NO 037
 COUNTRY 18
 INSTITUTE 22

LAT 43-26-00N
 LON 077-54-00W

YEAR 1968
 MONTH 11
 DAY 21
 TIME 1348

NO. DEPTHS 03
 SOUNDING 1127
 BT SLIDE NO 037

DEPTH	SECCHI	FOREL	TEMP	T CLAS	TURB	CON 25	O2 W	T PO4
1.0			5.87	0.01	0.7	338	11.67	0.013
30.0			5.86	0.00	0.6	337	11.76	0.013
110.0			5.24	0.01	1.7	336	11.80	0.015

DEPTH	SR PO4	NH3	TFNO3	R SID2	CHLORA	MF COL	MF FCO	SPC 20
1.0	0.007	0.022	0.235	0.495	1.1	410E01		390E02
30.0	0.006	0.025	0.235	0.430				
110.0	0.007	0.017	0.260	0.545		400E00		310E02

DEPTH	SPC 35	F RES	TT ALK	S SO4	CA NFA	MG NF	K NFS	NA NFS
1.0	480E01	208.0	94.2	29.9	41.500	8.000	1.350	12.900
30.0		216.0	94.2	29.7	41.500	8.000	1.350	12.900
110.0	410E01	197.0	94.2	29.9	42.500	8.000	1.400	12.800

DEPTH	PH 25	F	CL	HARD
1.0	7.900	0.103	26.8	136.6
30.0	8.000	0.109	26.8	136.6
110.0	7.900	0.109	27.2	139.1

C-REF-NO 023
 CONS. NO 038
 COUNTRY 18
 INSTITUTE 22

LAT 43-22-00N
 LON 077-54-00W

YEAR 1968
 MONTH 11
 DAY 21
 TIME 1500

NO. DEPTHS 02
 SOUNDING 0122
 BT SLIDE NO 038

DEPTH	SECCHI	FOREL	TEMP	T CLAS	TURB	CON 25	O2 W	T PO4
1.0			5.02	0.00	3.0	340	12.24	0.015
10.0			5.39	0.00	3.5	339	12.13	0.015

DEPTH	SR PO4	NH3	TFNO3	R SID2	CHLORA	MF COL	MF FCO	SPC 20
1.0	0.007	0.033	0.220	0.460	1.1	180E01	600E00	
10.0	0.007	0.035	0.190	0.435		200E01	120E01	

DEPTH	SPC 35
1.0	150E02
10.0	240E02

C-REF-NO 023
 CONS. NO 039
 COUNTRY 18
 INSTITUTE 22

LAT 43-24-24N
 LON 078-12-00W

YEAR 1968
 MONTH 11
 DAY 21
 TIME 1708

NO. DEPTHS 03
 SOUNDING 0488
 BT SLIDE NO 039

DEPTH	SECCHI	FOREL	TEMP	T CLAS	TURB	CON 25	O2 W	T P04
1.0			6.62	0.01				
10.0			6.61	0.00				
46.0			6.54	0.00				

DEPTH	SR P04	NH3	TFNO3	R SIO2	CHLORA	MF COL	MF FCO	SPC 20
1.0						500E01	200E01	870E02
10.0						420E01		370E03
46.0						550E01	190E01	210E03

DEPTH	SPC 35
1.0	440E02
10.0	680E02
46.0	450E02

C-REF-NO 023
 CONS. NO 040
 COUNTRY 18
 INSTITUTE 22

LAT 43-26-00N
 LON 078-12-00W

YEAR 1968
 MONTH 11
 DAY 21
 TIME 1736

NO. DEPTHS 02
 SOUNDING 0777
 BT SLIDE NO 040

DEPTH	SECCHI	FOREL	TEMP	T CLAS	TURB	CON 25	O2 W	T P04
1.0			6.30	0.02				
74.0			6.32					

DEPTH	SR P04	NH3	TFNO3	R SIO2	CHLORA	MF COL	MF FCO	SPC 20
1.0					0.8	100E01		400E02
74.0						420E01		400E02

DEPTH	SPC 35
1.0	130E02
74.0	110E02

C-REF-NO 023
 CONS. NO 041
 COUNTRY 18
 INSTITUTE 22

LAT 43-24-24N
 LON 078-30-00W

YEAR 1968
 MONTH 11
 DAY 21
 TIME 1926

NO. DEPTHS 03
 SOUNDING 0567
 BT SLIDE NO 041

DEPTH	SECCHI	FOREL	TEMP	T CLAS	TURB	CON 25	O2 W	T P04
1.0			7.22	0.01				
10.0			7.22	0.01				
53.0			7.23	0.02				

DEPTH	SR P04	NH3	TFNO3	R SIO2	CHLORA	MF COL	MF FCO	SPC 20
1.0						500E00		570E02
10.0						230E01		110E03
53.0						340E01	120E01	120E03

DEPTH	SPC 35
1.0	140E02
10.0	170E02
53.0	300E02

C-REF-NO 023
 CONS. NO 042
 COUNTRY 18
 INSTITUTE 22

LAT 43-26-00N
 LON 078-30-00W

YEAR 1968
 MONTH 11
 DAY 21
 TIME 1953

NO. DEPTHS 02
 SOUNDING 1115
 BT SLIDE NO 042

DEPTH	SECCHI	FOREL	TEMP	T CLAS	TURB	CON 25	O2 W	T P04
1.0			6.15	0.01				
108.0			6.14	0.02				

DEPTH	SR P04	NH3	TFNO3	R SIO2	CHLORA	MF COL	MF FCO	SPC 20
1.0					1.4	100E01		140E02
108.0						700E00		220E02

DEPTH	SPC 35
1.0	720E01
108.0	100E02

C-REF-NO 023
 CONS. NO 043
 COUNTRY 18
 INSTITUTE 22

LAT 43-39-00N
 LON 078-30-00W

YEAR 1968
 MONTH 11
 DAY 21
 TIME 2123

NO. DEPTHS 02
 SOUNDING 1402
 BT SLIDE NO 043

DEPTH SECCHI FOREL TEMP T CLAS TURB CON 25 02 W T P04

1.0 7.00 0.00
 138.0 3.80 0.01

DEPTH SR P04 NH3 TFNO3 R SIO2 CHLORA MF COL MF FCO SPC 20

1.0 1.2 000E00 140E01
 138.0 200E00 200E01

DEPTH SPC 35

1.0 160E01
 138.0 900E00

C-REF-NO 023
 CONS. NO 044
 COUNTRY 18
 INSTITUTE 22

LAT 43-52-00N
 LON 078-30-00W

YEAR 1968
 MONTH 11
 DAY 21
 TIME 2300

NO. DEPTHS 03
 SOUNDING 0320
 BT SLIDE NO 044

DEPTH SECCHI FOREL TEMP T CLAS TURB CON 25 02 W T P04

1.0 6.69 0.02
 10.0 6.72 0.01
 29.0 6.70 0.00

DEPTH SR P04 NH3 TFNO3 R SIO2 CHLORA MF COL MF FCO SPC 20

1.0 1.2 500E00 110E02
 10.0 300E00 150E02
 29.0 000E00 960E01

DEPTH SPC 35

1.0 730E01
 10.0 660E01
 29.0 880E01

C-REF-NO 023
 CONS. NO 045
 COUNTRY 18
 INSTITUTE 22

LAT 43-50-30N
 LON 078-48-00W

YEAR 1968
 MONTH 11
 DAY 22
 TIME 0121

NO. DEPTHS 02
 SOUNDING 0229
 BT SLIDE NO 045

DEPTH SECCHI FOREL TEMP T CLAS TURB CON 25 02 W T P04

1.0 6.04 0.03 2.2 334 11.36 0.013
 19.0 7.08 0.01 1.8 333 11.43

DEPTH SR P04 NH3 TFNO3 R SIO2 CHLORA MF COL MF FCO SPC 20

1.0 0.005 0.034 0.180 0.410 1.3 500E00
 19.0 0.006 0.026 0.170 0.400 150E01 800E00

DEPTH SPC 35

1.0
 19.0