

**Seasonal Outlook
Gulf of St Lawrence, East Newfoundland Waters and
Labrador Coast
Winter 2018-2019**



**Issued by the Canadian Ice Service of
Environment and Climate Change Canada
3 December 2018**

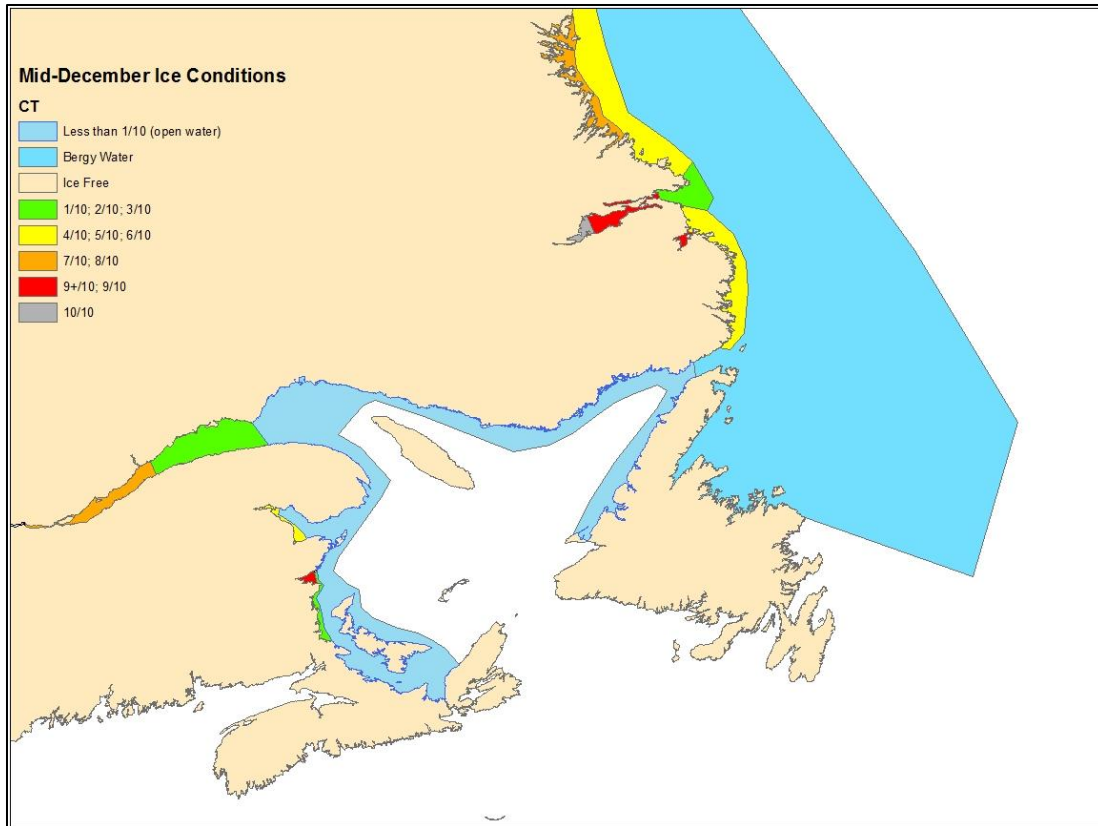


Figure 1: Expected ice conditions – mid-December 2018

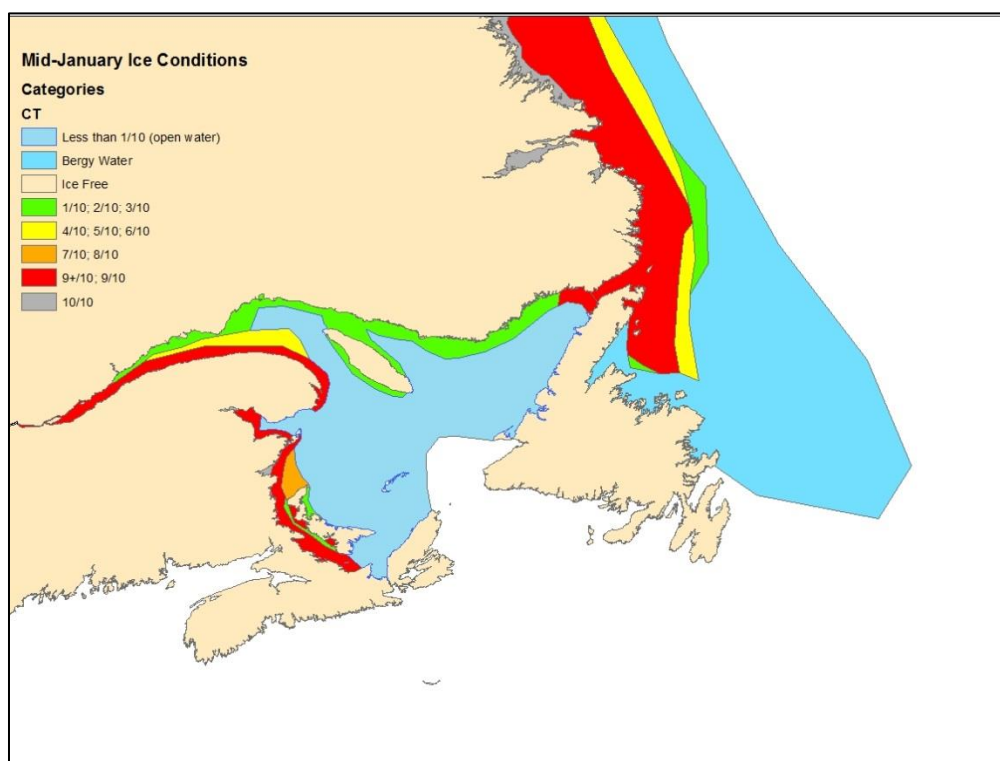


Figure 2: Expected ice conditions – mid-January 2019

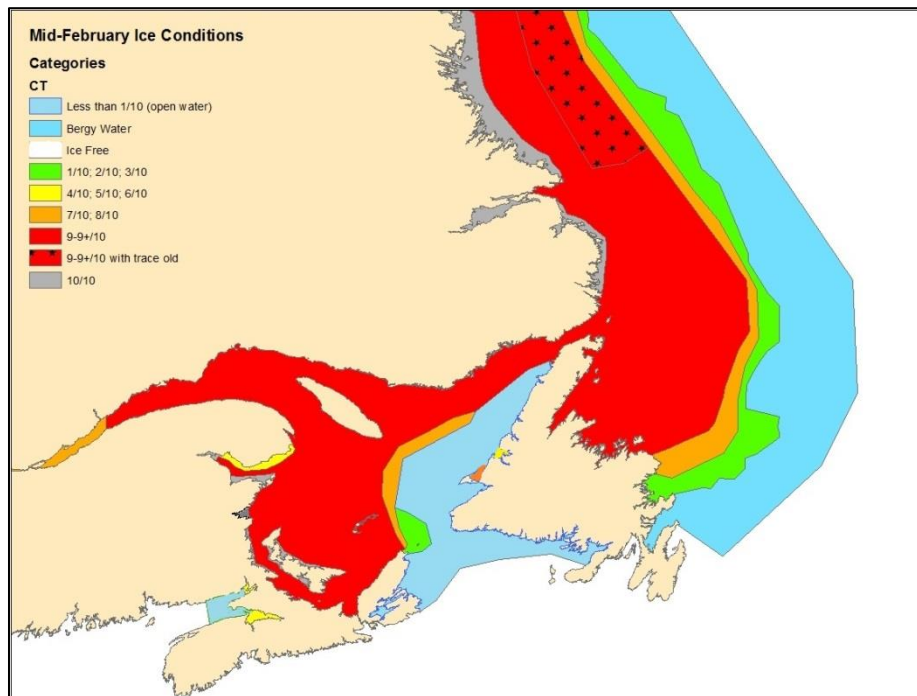


Figure 3: Expected ice conditions – mid-February 2019

Gulf of St-Lawrence

Winter temperature and ice forecasts

The surface air temperature is expected to be near normal for the December-February time period for the Gulf. More specifically below normal temperatures are forecast for the northern and Western portions of the Gulf in December. Elsewhere in the Gulf temperatures are forecast to be near normal from December to January. Temperatures are forecast to be near normal across the Gulf in February. Below normal ice conditions are forecast in general, with near normal ice extents in the estuary and northern section of the Gulf.

The Estuary.

Outlook for December...

December 10-15: Open water except 1-3 tenths of new and grey ice along sections of the shore.

December 16-31: Open water except 4-6 tenths of new and grey ice along sections of the shore. 7-8 tenths new and grey ice in the western section.

Outlook for January...

January 1-10: 1-3 tenths new and grey ice except 7-8 tenths of new and grey ice over the western section.

January 11-21: 4-6 tenths new and grey ice except 9-9 plus tenths of new and grey ice over the western section. 9-9+ tenths grey ice along the southern shore.

January 22-31: 7-8 tenths new and grey ice except 9-9 plus tenths of grey and grey-white ice over the western section and along the southern shore.

Outlook for February...

February 1-14: 7-8 tenths of grey and grey-white ice except 9-9 plus tenths of grey-white and first-year ice over the western section.

February 15-28: 9 tenths of grey-white and first-year ice.

Chaleur Bay southward to Northumberland Strait.

Outlook for December...

December 10-31: Open water except 7-8 tenths of new and grey ice in sheltered bays and inlets.

Outlook for January...

January 1-15: 7-8 tenths of new and grey ice near the coast except 9-9 plus of grey and grey-white ice over Northumberland Strait. Consolidated grey-white ice in sheltered bays and inlets.

January 16-31: 9-9 plus tenths of grey and grey-white ice except 9-9 plus tenths of grey-white and first year ice in Northumberland Strait. Consolidated first-year ice in sheltered bays and inlets.

Outlook for February...

February 1-28: 9-9 plus tenths of grey-white and first-year ice. Consolidated first-year ice in sheltered bays and inlets.

West coast of Newfoundland.

Outlook for December...

December 10-31: Ice free to open water except isolated areas of new and grey ice in sheltered bays and inlets.

Outlook for January...

January 1-14: Open water except consolidated grey ice in sheltered bays and inlets. 1-3 tenths of grey ice over the extreme northern sections and near the Port au Port peninsula.

January 15-31: Bergy water except 9-9 plus tenths of grey and grey-white ice along the coast in the northern section and near the Port au Port peninsula. Consolidated grey-white ice in sheltered bays and inlets.

Outlook for February...

February 1-28: Bergy water except 9-9 plus tenths of grey-white ice and first-year ice along the coast in the northern section and near the Port au Port peninsula. Consolidated grey-white ice and first-year ice in sheltered bays and inlets.

North Shore of Quebec.

Outlook for December...

December 10-31: Open water except isolated patches of new and grey ice along the shore. Consolidated grey ice in sheltered bays and inlets.

Outlook for January...

January 1-10: Open water except 9-9 plus tenths of new and grey ice extending 15 nautical miles from shore.

January 11-31: Open water except 9-9 plus tenths of grey and grey-white ice extending 20 nautical miles from shore.

Outlook for February...

February 1-10: Open water except 9-9 plus tenths of grey and grey-white ice extending 45 nautical miles from shore.

February 11-28: 9-9 plus tenths of grey-white and first-year ice.

Elsewhere.

Outlook for December...

December 10-31: Ice free to open water except for isolated areas of new and grey ice near the Îles de la Madeleine and in sheltered bays along the north shore of Prince Edward Island and along Anticosti island.

Outlook for January...

January 1-15: Ice free to open water except isolated areas of 4-6 tenths of new and grey ice near Anticosti Island and the Îles de la Madeleine.

January 16-31: Open water except 7-8 tenths of new and grey ice near the Îles de la Madeleine and along sections of Anticosti Island.

Outlook for February...

February 1-7: Open water except 7-8 tenths of grey and grey-white ice near the Îles de la Madeleine and northward and westward.

February 8-21: Open water except 9 tenths of grey and grey-white ice from Anticosti Island to the northwestern shore of Cape Breton Island.

February 22-28: Open water except 7-8 tenths of grey-white ice and first-year ice near the Îles de la Madeleine and northward and westward.

East Newfoundland Waters and Labrador Coast.

Winter temperature and ice forecasts.

Average air temperatures are expected to be near normal to below normal for December and January and near to slightly above normal for February over the East Newfoundland Waters. Below normal temperatures are forecast along the Labrador coast. Near normal ice conditions are forecast.

Labrador Coast and Strait of Belle Isle.

Outlook for December...

December 1-15: Bergy water except 4-6 tenths of new and grey ice along the coast near Cartwright and northward.

December 16-31: Bergy water except 9-9 plus tenths of grey and grey-white ice extending 20 nautical miles from the coast near Port Hope Simpson and northward along the coast. 1-3 tenths of new and grey ice in the Strait of Belle Isle.

Outlook for January...

January 1-15: 9-9 plus tenths of grey-white and first-year ice extending 90 nautical miles from the coast from Port Hope Simpson and northward. 9-9 plus tenth of grey and grey-white ice extending south of Port Hope Simpson and into the Strait of Belle Isle.

January 16-31: 9-9 plus tenths of grey-white and first-year ice extending 90 nautical miles from the coast from Port Hope Simpson and northward. 9-9 plus tenths of grey and grey-white ice extending 80 nautical miles from the coast from Port Hope Simpson to the Strait of Belle Isle.

Outlook for February...

February 1-14: 9-9 plus tenths of first-year ice including a trace of old ice extending 120 nautical miles from the Labrador coast. 9-9 plus tenths of grey and grey-white ice in the Strait of Belle Isle.

February 15-28: 9-9 plus tenths of first-year ice including a trace of old ice extending 150 nautical miles from the Labrador coast. 9-9 plus tenths of first-year ice in the Strait of Belle Isle.

Lake Melville.

Outlook for December...

December 1-7: 9-9 plus tenths grey and grey white ice.

December 8-15: 9-9 plus tenths of grey-white and first-year ice. Consolidated grey-white ice and first-year ice in the western section.

December 16-31: Consolidated grey-white and first-year ice.

Outlook for January...

January 1-31: Consolidated first-year ice.

Outlook for February:

February 1-28: Consolidated first-year ice.

Newfoundland.

Outlook for December...

December 1-31: Open water to ice free except 4-6 tenths of new and grey ice in isolated bays and inlets.

Outlook for January...

January 1-10: Open water except 4-6 tenths of grey and grey-white ice extending 60 nautical miles from the coast near St. Anthony. 9-9 plus tenths grey ice and grey-white ice north of the Northern Peninsula. Consolidated grey ice in isolated bays and inlets.

January 11-22: 9 tenths of grey and grey-white ice extending 100 nautical miles from east the northern peninsula. Bergy water in Notre Dame Bay and White Bay. and open water from Cape Freels and southward. Consolidated grey-white ice in isolated bays and inlets.

January 23-31: 9 tenths grey and grey-white ice north of Newfoundland and within 120 nautical miles of the coastline. 4-6 tenths grey and grey-white ice along the northeast coast. Consolidated grey-white ice in many bays and inlets.

Outlook for February...

February 1-14: 9-9 plus tenths of grey and grey-white ice extending 150 nautical miles from the coast from Cape Freels and northward. Consolidated first-year ice in isolated bays and inlets.

February 15-28: 9-9 plus tenths of grey-white and first-year ice with a trace of old ice extending 180 nautical miles from the coast from Cape Freels and northwards. 4-6 tenths grey and grey-white ice in and northeast of Bonavista Bay. Consolidated first-year ice in isolated bays and inlets.